

Always there to help you

Register your product and get support at
www.philips.com/welcome



BTB7150



User manual

PHILIPS

Contents

1 Important	2	7 Product information	16
Safety	2	Specifications	16
		USB playability information	17
2 Your micro system	4	Supported MP3 disc formats	17
Introduction	4	RDS program types	18
What's in the box	4		
Overview of the main unit	5	8 Troubleshooting	18
Overview of the remote control	6		
		9 Notice	20
3 Get started	7		
Connect speakers	7		
Connect FM antenna	7		
Connect power	7		
Prepare the remote control	8		
Demonstrate the features	8		
Set clock	8		
Turn on	8		
4 Play	9		
Play from disc	9		
Play from USB	9		
Control play	10		
Skip to a track	10		
Program tracks	10		
Play from Bluetooth-enabled devices	10		
5 Listen to the radio	12		
Listen to DAB+ radio	12		
Listen to FM radio	14		
6 Other features	15		
Set the alarm timer	15		
Set the sleep timer	15		
Listen to an external device	15		
Listen through a headphone	16		

1 Important

Safety



This 'bolt of lightning' indicates uninsulated material within the device may cause an electrical shock. For the safety of everyone in your household, please do not remove the covering.

The 'exclamation mark' calls attention to features for which you should read the enclosed literature closely to prevent operating and maintenance problems.

WARNING: To reduce the risk of fire or electric shock, the device should not be exposed to rain or moisture and objects filled with liquids, such as vases, should not be placed on the device.

CAUTION: To prevent electric shock, fully insert the plug. (For regions with polarized plugs: To prevent electric shock, match wide blade to wide slot.)

Important Safety Instructions

- Follow all instructions.
- Heed all warnings.
- Do not use this device near water.
- Clean only with dry cloth.
- Do not block any ventilation openings. Install in accordance with the manufacturer's instructions.
- Do not install near any heat sources such as radiators, heat registers, stoves, or other devices (including amplifiers) that produce heat.

- Protect the power cord from being walked on or pinched, particularly at plugs, convenience receptacles, and the point where they exit from the device.
- Only use attachments/accessories specified by the manufacturer.
- Use only with the cart, stand, tripod, bracket, or table specified by the manufacturer or sold with the device. When a cart is used, use caution when moving the cart/device combination to avoid injury from tip-over.



- Unplug this device during lightning storms or when unused for long periods of time.
- Refer all servicing to qualified service personnel. Servicing is required when the device has been damaged in any way, such as power-supply cord or plug is damaged, liquid has been spilled or objects have fallen into the device, the device has been exposed to rain or moisture, does not operate normally, or has been dropped.
- Battery usage CAUTION - To prevent battery leakage which may result in bodily injury, property damage, or damage to the unit:
 - Install all batteries correctly, + and - as marked on the unit.
 - Do not mix batteries (old and new or carbon and alkaline, etc.).
 - Batteries (packed or installed) shall not be exposed to excessive heat such as sunshine, fire or the like.
 - Remove batteries when the unit is not used for a long time.
- The device shall not be exposed to dripping or splashing.
- Do not place any sources of danger on the device (e.g. liquid filled objects, lighted candles).

- Where the MAINS plug or an appliance coupler is used as the disconnect device, the disconnect device shall remain readily operable.



Warning

- Never remove the casing of this device.
- Never lubricate any part of this device.
- Never place this device on other electrical equipment.
- Keep this device away from direct sunlight, naked flames or heat.
- Never look into the laser beam inside this device.
- Ensure that you always have easy access to the power cord, plug, or adaptor to disconnect this device from the power.

Hearing safety



Caution

- To prevent possible hearing damage, do not listen at high volume levels for long periods.

Listen at a moderate volume:

- Using headphones at a high volume can impair your hearing. This product can produce sounds in decibel ranges that may cause hearing loss for a normal person, even for exposure less than a minute. The higher decibel ranges are offered for those that may have already experienced some hearing loss.
- Sound can be deceiving. Over time your hearing 'comfort level' adapts to higher volumes of sound. So after prolonged listening, what sounds 'normal' can actually be loud and harmful to your hearing. To guard against this, set your volume to a safe level before your hearing adapts and leave it there.

To establish a safe volume level:

- Set your volume control at a low setting.
- Slowly increase the sound until you can hear it comfortably and clearly, without distortion.

Listen for reasonable periods of time:

- Prolonged exposure to sound, even at normally 'safe' levels, can also cause hearing loss.
- Be sure to use your equipment reasonably and take appropriate breaks.

Be sure to observe the following guidelines when using your headphones.

- Listen at reasonable volumes for reasonable periods of time.
- Be careful not to adjust the volume as your hearing adapts.
- Do not turn up the volume so high that you can't hear what's around you.
- You should use caution or temporarily discontinue use in potentially hazardous situations.
- Do not use headphones while operating a motorized vehicle, cycling, skateboarding, etc.; it may create a traffic hazard and is illegal in many areas.

2 Your micro system

Congratulations on your purchase, and welcome to Philips! To fully benefit from the support that Philips offers, register your product at www.philips.com/welcome. Before using your product, read all accompanying safety information. To download the full user manual, visit www.philips.com/support.

Introduction

With this unit, you can:

- enjoy audio from discs, Bluetooth-enabled devices, USB storage devices, or other external devices;
- listen to Digital Audio Broadcasting (DAB) or FM radio stations.

You can enrich sound output with below sound effects:

- TREBLE
- BASS

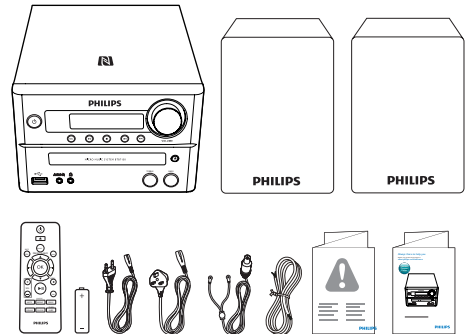
The unit supports these media formats:



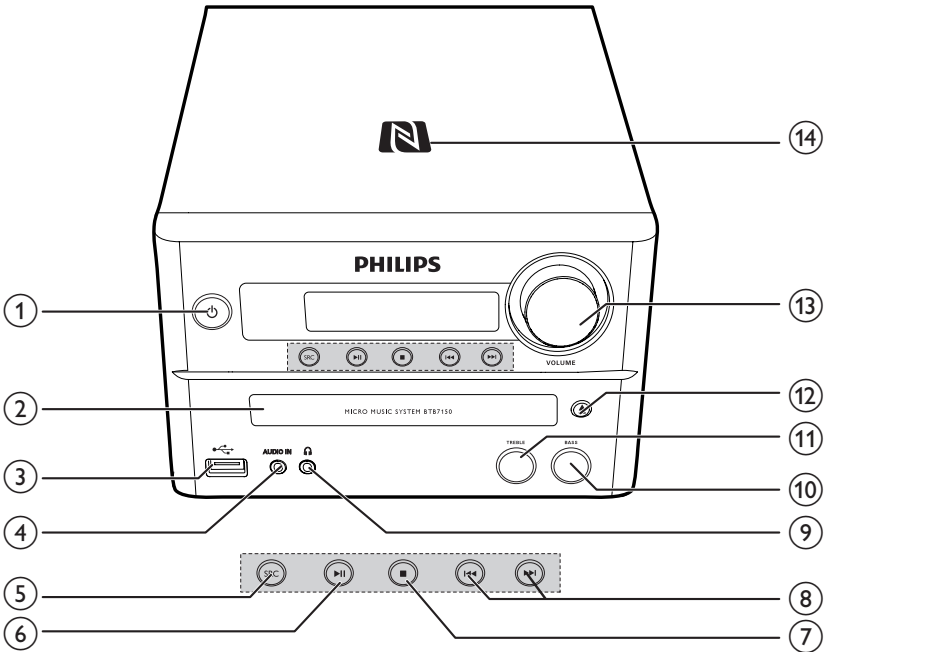
What's in the box

Check and identify the contents of your package:

- Main unit
- 2 x speakers
- 2 x speaker cables
- 2 x AC power cords
- 1 x aerial
- Remote control (with one AAA battery)
- Short user manual
- Safety and notice



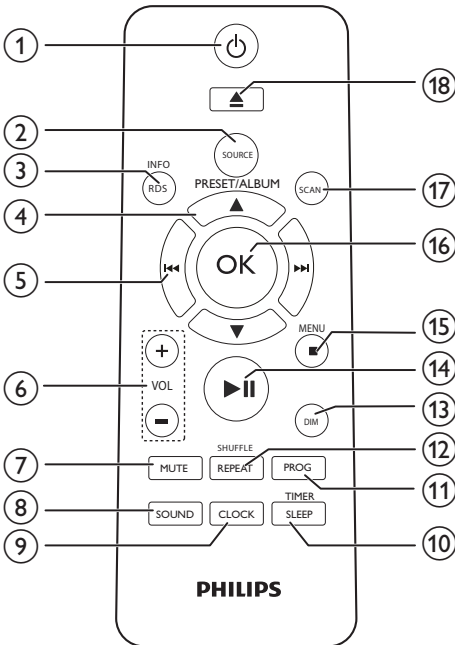
Overview of the main unit



- ① Turn the unit on or off.
- Switch to standby mode or Eco standby mode.
 - Bluetooth indicator.
- ② **Disc compartment**
- ③ USB socket.
- ④ **AUDIO IN**
- Audio input jack (3.5mm) for an external audio device.
- ⑤ **SRC**
- Select a source: DISC, USB, DAB, TUNER, BT, AUDIO IN.
- ⑥ Start, pause, or resume play.
- ⑦ Stop play or erase a program.
- ⑧ Skip to the previous/next track.
- Search within a track/disc/USB.
 - Tune to a radio station.
 - Adjust time.
- ⑨ Headphone socket.
- ⑩ **BASS**
- Adjust bass level.
- ⑪ **TREBLE**
- Adjust treble level.
- ⑫ Open/close the disc compartment.
- ⑬ **VOLUME**
- Adjust volume.

- ⑭ **NFC area**
- Touch with a Near Field Communication (NFC) compatible device to set up Bluetooth connection automatically.

Overview of the remote control



- ① **⏻**
- Turn the unit on or off.
 - Switch to standby mode or Eco power standby mode.
- ② **SOURCE**
- Select a source: DISC, USB, DAB, TUNER, BT, AUDIO IN.
- ③ **INFO/RDS**
- Display current status or the disc information.
 - For selected FM radio stations, display RDS information.

- ④ **PRESET/ALBUM ▲ / ▼**
- Select a preset radio station.
 - Skip to previous/next album.
- ⑤ **◀◀ / ▶▶**
- Skip to the previous/next track.
 - Search within a track/disc/USB.
 - Tune to a radio station.
 - Adjust time.
- ⑥ **VOL +/-**
- Adjust volume.
- ⑦ **MUTE**
- Mute or restore volume.
- ⑧ **SOUND**
- Adjust BASS or TREBLE level.
- ⑨ **CLOCK**
- Set the clock.
 - View clock information.
- ⑩ **SLEEP/TIMER**
- Set sleep timer.
 - Set alarm timer.
- ⑪ **PROG**
- Program tracks.
 - Program radio stations.
- ⑫ **REPEAT/SHUFFLE**
- Select repeat or shuffle play mode.
- ⑬ **DIM**
- Adjust display brightness.
- ⑭ **▶▶**
- Start, pause, or resume play.
- ⑮ **■ / MENU**
- Stop play or erase a program.
 - Access DAB+ or FM menu.
- ⑯ **OK**
- Confirm a selection.
- ⑰ **SCAN**
- Scan FM or DAB+ radio stations.
- ⑱ **▲**
- Press to open or close the disc compartment.

3 Get started

! Caution

- Use of controls or adjustments or performance of procedures other than herein may result in hazardous radiation exposure or other unsafe operation.

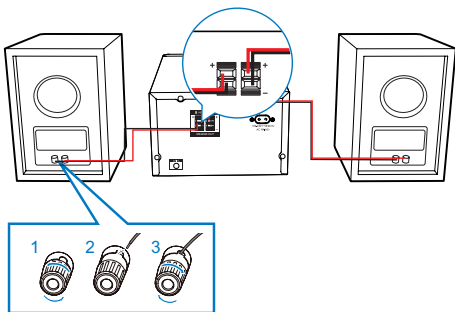
Always follow the instructions in this chapter in sequence.

If you contact Philips, you will be asked for the model and serial number of this apparatus. The model number and serial number are on the back of the apparatus. Write the numbers here:
Model No. _____
Serial No. _____

Connect speakers

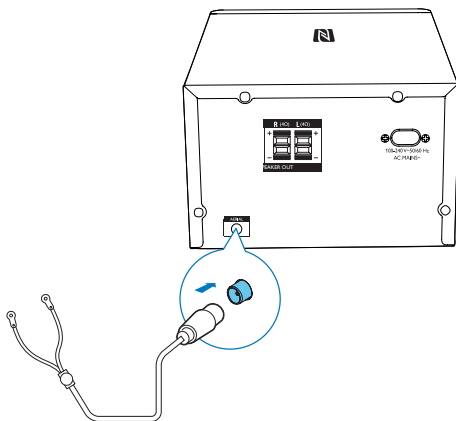
≡ Note

- For optimal sound, use the supplied speakers only.
- Connect only speakers with impedance that is the same or higher than the supplied speakers. Refer to the Specifications section of this manual.



Connect FM antenna

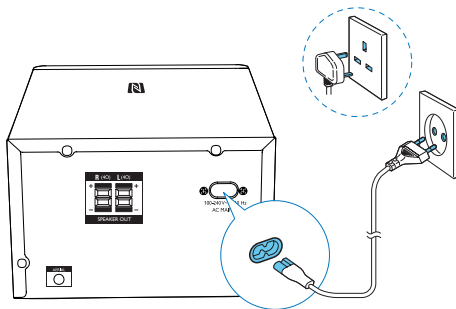
Connect the supplied aerial to this device before listening to the radio.



Connect power

! Caution

- Risk of product damage! Ensure that the power supply voltage corresponds to the voltage printed on the back or the underside of the unit.
- Risk of electric shock! When you unplug the AC power cord, always pull the plug from the socket. Never pull the cord.
- Before you connect the AC power cord, ensure that you have completed all other connections.



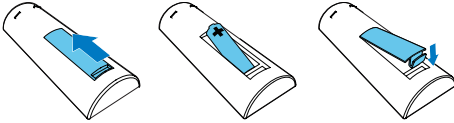
Prepare the remote control

! Caution

- Risk of explosion! Keep batteries away from heat, sunshine or fire. Never discard batteries in fire.
- Risk of decreased battery life! Never mix different brands or types of batteries.
- Risk of product damage! When the remote control is not used for long periods, remove the batteries.

To insert the remote control battery:

- 1 Open the battery compartment.
- 2 Insert the supplied AAA battery with correct polarity (+/-) as indicated.
- 3 Close the battery compartment.



Demonstrate the features

In standby mode, press and hold **■** for three seconds to demonstrate features of this device.

- ↳ The features are displayed one by one across the display panel.
- To turn off the demonstration, press **■** again.

Set clock

- 1 In standby mode, press and hold **CLOCK** on the remote control for three seconds.
 - ↳ [24H] or [12H] hour format is displayed.
- 2 Press **◀▶** to select [24H] or [12H] hour format.
- 3 press **CLOCK** to confirm.
 - ↳ The hour digits are displayed and begin to blink.

- 4 Repeat steps 2-3 to set hour and minute.

≡ Note

- If no button is pressed in 90 seconds, the system exits clock setting mode automatically.

✻ Tip

- You can view clock information in power-on mode by pressing **CLOCK**.

Turn on

Press **⏻**.

- ↳ The unit switches to the last selected source.

Switch to standby mode

Press **⏻** again to switch the unit to standby mode.

- ↳ The clock (if set) is displayed on the panel.

Switch to ECO standby mode:

- Press and hold **⏻** for more than two seconds.
- ↳ The display panel is dimmed.

≡ Note

- The unit switches to Eco Power Standby mode after 3 hours in standby mode.

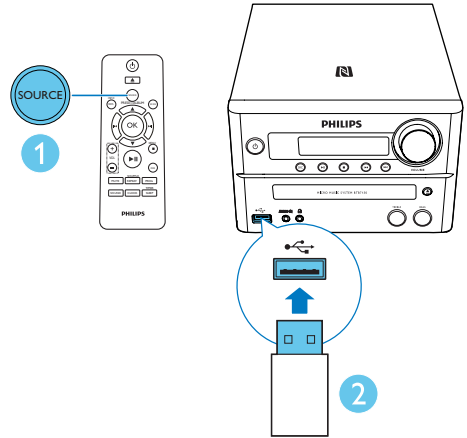
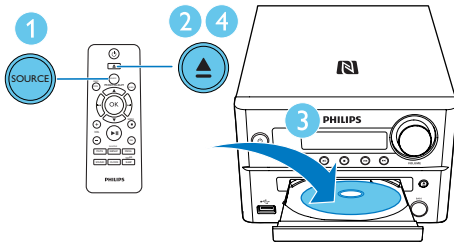
Switch between standby mode and ECO standby mode:

Press and hold **⏻** for more than two seconds.

4 Play

Play from disc

- 1 Press **SOURCE** repeatedly to select **DISC** source.
- 2 Press **▲** to open the disc compartment.
- 3 Insert a disc with printed side facing upward.
- 4 Press **▲** to close the disc compartment.
↳ Play starts automatically. If not, press **▶||**.



Charge your device

You can charge your device through the USB socket on this product with a USB cable (not supplied).

Note

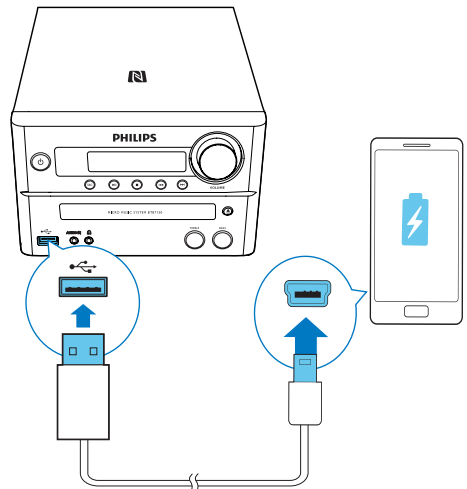
- The maximum current for USB charging is 1 A.
- All devices for USB charging are not guaranteed.

Play from USB

Note

- Make sure that the USB device contains playable audio content.

- 1 Press **SOURCE** repeatedly to select **USB** source.
- 2 Insert a USB device into the **USB** socket.
↳ Play starts automatically. If not, press **▶||**.



Control play

▲ / ▼	Select a folder.
◀◀ / ▶▶	Select an audio file.
▶ 	Pause or resume play.
■	Stop play.
REPEAT/ SHUFFLE	Select an available play mode. <ul style="list-style-type: none"> • [REPEAT ONE] (repeat one): repeat the current track • [REPEAT ALB] (repeat album): repeat the current album • [REPEAT ALL] (repeat all): repeat all tracks • [SHUFFLE] (shuffle): play tracks randomly • [OFF] (off): play tracks in sequence
VOL +/-	Increase or decrease volume.
MUTE	Mute or restore sound.
SOUND	Press SOUND to select treble or bass mode, and then press VOL +/- to adjust treble or bass volume. Press and hold SOUND for three seconds to turn on or off LOUDNESS .
DIM	Adjust display brightness.

Skip to a track

For CD:

Press **◀◀ / ▶▶** to select another track.

For MP3 disc and USB:

1 Press **▲ / ▼** to select an album or a folder.

2 Press **◀◀ / ▶▶** to select a track or a file.

Program tracks

You can program a maximum of 20 tracks.

1 Press **PROG** to activate the program mode.

- 2** For MP3 tracks, press **▲ / ▼** to select an album.
- 3** Press **◀◀ / ▶▶** to select a track, and then press **PROG** to confirm.
- 4** Repeat steps 2-3 to program more tracks.
- 5** Press **▶ ||** to play the programmed tracks.
 - ↳ During play, **[PROG]** (program) is displayed.
 - To erase the program, in the stop position, press **■**.

Play from Bluetooth-enabled devices

Note

- Before pairing a device with this system, read its user manual for Bluetooth compatibility.
- Compatibility with all Bluetooth devices is not guaranteed.
- Any obstacle between the system and the device can reduce the operational range.
- The effective operation range between this product and your Bluetooth enabled device is approximately 10 meters (30 feet).
- The unit can memorize up to 8 previously connected Bluetooth devices.

To enjoy music through the speaker wirelessly, you need to pair your Bluetooth enabled device with the unit.

Choose your best Bluetooth pairing method based on the preconditions listed below.

Precondition	Pairing method
Your Bluetooth device supports both Near Field Communication (NFC) and Advanced Audio Distribution Profile (A2DP).	Choose Option 1 (recommended) or Option 2.
Your Bluetooth device only supports A2DP.	Choose Option 2.

Pair and connect

Option 1: Pair and connect through NFC

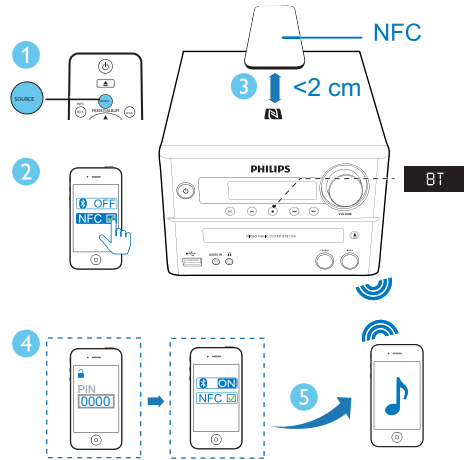
Near Field Communication (NFC) is a technology that enables short-range wireless communication between various NFC compatible devices, such as mobile phones and IC tags.

With the NFC function, data communication can be achieved easily just by touching the relevant symbol or designated location on NFC compatible devices.

Note

- Compatibility with all NFC devices is not guaranteed.

- 1 Press **SOURCE** repeatedly to select **BT** source.
 - ↳ **[BT]** (Bluetooth) is displayed.
 - ↳ The Bluetooth indicator flashes blue.
- 2 Enable the NFC feature on your Bluetooth enabled device (see the user manual of the device for details).
- 3 Keep the NFC area of the external device and the NFC area of this product within 2 cm.
- 4 Accept '**PHILIPS BTB7150**' pairing for the first-time use, and input '0000' as the pairing password if necessary.
 - ↳ After successful pairing and connection, the Bluetooth indicator turns solid blue, and the unit beeps.



Option 2: Pair and connect manually

- 1 Press **SOURCE** repeatedly to select **BT** source.
 - ↳ **[BT]** (Bluetooth) is displayed.
 - ↳ The Bluetooth indicator flashes blue.
- 2 On the Bluetooth enabled device, search for Bluetooth devices that can be paired (see the user manual of the device).
- 3 Select '**Philips BTB7150**' on your Bluetooth enabled device and input '0000' as the pairing password if necessary.
 - ↳ After successful pairing and connection, the Bluetooth indicator turns solid blue, and the unit beeps.

5 Listen to the radio

Tip

- Position the antenna as far as possible from TV, VCR, or other radiation source.
- Make sure that you have connected the supplied aerial.
- For optimal reception, fully extended and adjust the position of the aerial.

Listen to DAB+ radio

Digital Audio Broadcasting (DAB+) is a way of broadcasting radio digitally through a network of transmitters. It provides you with more choice, better sound quality, and more information.

Tune to DAB+ radio stations

Note

- Make sure that the antenna is fully extended.

Press **SOURCE** repeatedly to select **DAB** source.

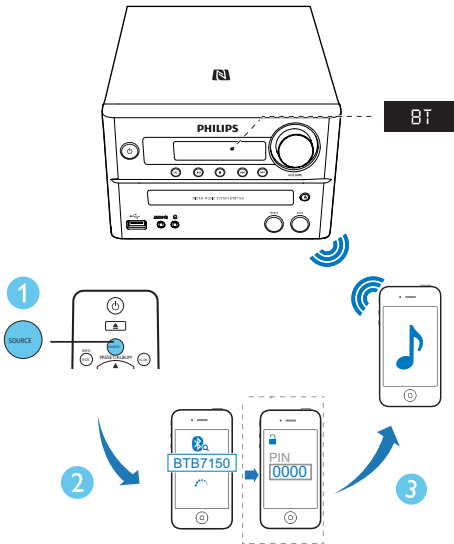
↳ **[FULL SCAN]** (full scan) is displayed.

↳ The unit stores all DAB+ radio stations automatically and broadcasts the first available station.

↳ The station list is memorized in the unit. Next time when you turn on the unit, the station scan does not take place.

Note

- If no DAB+ radio station is found, **[NO DAB]** (no DAB) is displayed, then **[FULL SCAN]** (full scan) is displayed again.



Stream music through Bluetooth

- Play audio on the Bluetooth device connected to this product.
 - ↳ Audio streams from your Bluetooth enabled device to the speakers of this product.

To disconnect the Bluetooth-enabled device:

- Deactivate Bluetooth on your device; or
- Move the device beyond the communication range.

To clear Bluetooth pairing history:

- Press and hold **▶||** on the main set for eight seconds.
 - ↳ After successful clearing, beep sounds.

Play from Philips DigitalRadio application

An application **Philips DigitalRadio** is available on Apple App Store and Google Play. To fully enjoy features of this product, download and install the application to your smart device. With this application, after connect your Bluetooth-enabled device to this product, you can control **DAB**, **TUNER**, **BT**, and **AUDIO IN** play mode from your Bluetooth-enabled device.

To tune to a station from the available station list:

In DAB+ mode, press **◀◀ / ▶▶** repeatedly to navigate through the available DAB+ stations.

Store DAB+ radio stations automatically

Note

- New stations and services will be added in DAB+ broadcast from time to time. To make new DAB+ stations and services available, perform full scan regularly.

In DAB+ mode, press **SCAN**.

↳ The unit scans and stores all the available DAB+ radio stations, and broadcasts the first available station.

Store DAB+ radio stations manually

Note

- You can store a maximum of 20 preset DAB+ radio stations.

- 1 Tune to a DAB+ radio station.
- 2 Press **PROG** for three seconds to activate the storing mode.
- 3 Press **▲ / ▼** to select a channel.
- 4 Press **PROG** to confirm.
↳ The name of the preset station is displayed.
- 5 Repeat above steps to store more DAB+ stations.

Note

- To remove a pre-stored DAB+ radio station, store another station in its place.

Select a preset DAB+ radio station

In DAB+ mode, press **▲ / ▼** to select a preset number, and then press **OK** to confirm..

Show DAB+ information

While listening to DAB+ radio, press **INFO/ RDS** repeatedly to scroll through the following information (if available):

- Station Name
- RDS TEXT message
- Dynamic Label Segment
- Program Type
- Ensemble Name
- Frequency
- Signal error rate
- Bit rate
- Audio status (DAB, DAB+)
- Time
- Date

Use DAB+ menu

In DAB+ mode, press **MENU** to access DAB+ menu.

- 1 Press **◀◀ / ▶▶** to scroll the menu options:
 - **[Full scan]** (full scan): scan and store all the available DAB+ radio stations.
 - **[Manual]** (manual): tune to a DAB+ station manually.
 - **[Prune]** (prune): remove all the invalid stations from the station list.
 - **[System]** (system): adjust system settings.
 - 2 To select an option, press **OK**.
 - 3 If a sub-option is available, repeat steps 2- 3.
- [System]** (system)
- **[Reset]** (reset): reset all settings to factory default.
 - **[BT RESET]** (Bluetooth reset): reset Bluetooth settings to factory default.
 - **[UPGRADE]** (upgrade): upgrade software if available.

- [BT UPGRADE] (Bluetooth upgrade): upgrade Bluetooth software if available.
- [SWVER] (software version): show the software version of this unit.

Note

- If no button is pressed within 30 seconds, the menu exits.

Listen to FM radio

Tune to a radio station

- 1 Press **SOURCE** repeatedly to select tuner source.
- 2 Press and hold **◀◀ / ▶▶** for three seconds.
 - ↳ The radio tunes to a station with strong reception automatically.
- 3 Repeat step 2 to tune to more stations.

To tune to a weak station:

Press **◀◀ / ▶▶** repeatedly until you find optimal reception.

Store FM radio stations automatically

Note

- You can program a maximum of 20 preset radio stations (FM).

- 1 In tuner mode, press **MENU** to access FM tuner menu.
 - ↳ [SCAN] is displayed.
- 2 Press **OK**, and then press **◀◀ / ▶▶** to scroll the menu options:
 - [Strong] (strong stations): scan stations with strong signals only.
 - [All] (all stations): scan all available FM radio stations.
- 3 Press **OK** to select an option.

- 4 In FM tuner mode, press **SCAN**.
 - ↳ The stations scanned are based on the selection in step 2.
 - ↳ The unit broadcasts the first scanned FM radio stations.

Store FM radio stations manually

- 1 Tune to an FM radio station.
- 2 Press **PROG** to activate programming mode.
 - ↳ [PROG] (program) blinks.
- 3 Press **▲ / ▼** repeatedly to select a number.
- 4 Press **PROG** again to confirm.
 - ↳ The frequency of the preset station is displayed.
- 5 Repeat above steps to store more FM stations.

Note

- To remove a pre-stored station, store another station in its place.

Select a preset radio station

In FM mode, press **▲ / ▼** to select a preset number, and then press **OK** to confirm.

Show RDS information

Radio Data System (RDS) is a service that allows FM stations to show additional information.

- 1 Tune to an RDS station.
- 2 Press **RDS/INFO** repeatedly to scroll through the following information (if available).
 - Radio text message
 - Program type
 - Frequency
 - Stereo or Mono

6 Other features

Set the alarm timer

This unit can be used as an alarm clock. You can select **DISC**, **TUNER**, **DAB**, or **USB** as alarm source.

Note

- Make sure that you have set the clock correctly.

- 1 In standby mode, press and hold **SLEEP/TIMER** for three seconds.
↳ **[SET TIMER]** is displayed, and then **[DISC]** is displayed and begins to blink.
- 2 Press **◀▶** (or **SOURCE**) repeatedly to select an alarm source (**DISC**, **TUNER**, **DAB**, or **USB**).
- 3 Press **SLEEP/TIMER** (or **OK**) to confirm.
↳ The hour digits are displayed and begin to blink.
- 4 Repeat steps 2-3 to set hour, minute, and adjust volume of the alarm.

Note

- If no button is pressed in 90 seconds, the system exits timer setting mode automatically.

To activate or deactivate the alarm timer:

Press **SLEEP/TIMER** repeatedly to view the alarm information and activate or deactivate the alarm.

- ↳ If timer is activated, **⌚** is displayed.
- ↳ If timer is deactivated, **[TIMER OFF]** (timer off) is displayed and **⌚** disappears.

Tip

- If **DISC/USB** source is selected, but no disc is placed or no **USB** connected, the system switches to tuner source automatically.

Set the sleep timer

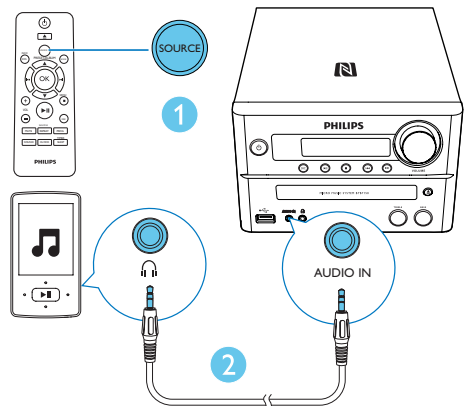
To set the sleep timer, in turn on mode, press **SLEEP/TIMER** repeatedly to select a set period of time (in minutes).

- ↳ When sleep timer is activated, **zZ** is displayed. Otherwise, **zZ** disappears.


Listen to an external device

You can listen to an external device through this unit with an audio cable.

- 1 Press **SOURCE** repeatedly to select **AUDIO IN** source.
- 2 Connect an audio cable (not supplied) between:
 - **AUDIO IN** jack (3.5 mm) on the unit;
 - and the headphone jack on an external device.
- 3 Start to play the device (see the device user manual).



Listen through a headphone

Plug a headphone (not supplied) into the  socket on front of this product.

7 Product information



Note

- Product information is subject to change without prior notice.

Specifications

Amplifier

Maximum Output Power	150 W
Frequency Response	60 Hz - 16 kHz; ±3 dB
Signal to Noise Ratio	≥70 dBA
Total Harmonic Distortion	<1%
Aux Input	600 mV RMS

Speakers

Speaker Impedance	4 ohm
Speaker Driver	5.25" woofer + 25 mm tweeter
Sensitivity	>84 dB/m/W

Disc

Laser Type	Semiconductor
Disc Diameter	12 cm/8 cm
Support Disc	CD-DA, CD-R, CD-RW, MP3-CD
Audio DAC	24 Bits/44.1 kHz
Total Harmonic Distortion	<1% (1 kHz)
Frequency Response	60 Hz - 16 kHz; ±3 dB
S/N Ratio	>70 dBA

USB

USB Direct Version	2.0 full speed
USB Charging	1 A

Bluetooth

Bluetooth version	V2.1 + EDR/support APT-X
Frequency band	2.4 GHz ~ 2.48 GHz ISM Band
Range	10 m (free space)

Tuner (FM)

Tuning Range	87.5-108 MHz
Tuning grid	50 KHz
Sensitivity	
- Mono, 26 dB S/N Ratio	<22 dBf
- Stereo, 46 dB S/N Ratio	<45 dBf
Search Selectivity	<30 dBf
Total Harmonic Distortion	<3%
Signal to Noise Ratio	>45 dBA

General information

AC power	100-240V~, 50/60 Hz
Operation Power Consumption	45 W
Eco Standby Power Consumption	<0.5 W
Dimensions	
- Main Unit (W x H x D)	230 x 145 x 240 mm
- Speaker Box (W x H x D)	173 x 261 x 241 mm
Weight	
- Main Unit	2.9 kg
- Speaker Box	2 x 3.1 kg

USB playability information

Compatible USB devices:

- USB flash memory (USB2.0 or USB1.1)
- USB flash players (USB2.0 or USB1.1)
- memory cards (requires an additional card reader to work with this unit)

Supported USB formats:

- USB or memory file format: FAT12, FAT16, FAT32 (sector size: 512 bytes)
- MP3 bit rate (data rate): 32-320 Kbps and variable bit rate
- Directory nesting up to a maximum of 8 levels
- Number of albums/ folders: maximum 99
- Number of tracks/titles: maximum 999
- ID3 tag v2.0 or later
- File name in Unicode UTF8 (maximum length: 32 bytes)
- FLAC files

Unsupported USB formats:

- Empty albums: an empty album is an album that does not contain MP3/WMA files, and will not be shown in the display.
- Unsupported file formats are skipped. For example, word documents (.doc) or MP3 files with extension .dlf are ignored and not played.
- WMA, AAC, WAV, PCM audio files
- DRM protected WMA files (.wav, .m4a, .m4p, .mp4, .aac)
- WMA files in Lossless format
- FLAC via USB

Supported MP3 disc formats

- ISO9660, Joliet
- Maximum title number: 128 (depending on file name length)
- Maximum album number: 99
- Supported sampling frequencies: 32 kHz, 44.1 kHz, 48 kHz
- Supported Bit-rates: 32~256 (kbps), variable bit rates

RDS program types

NO TYPE	No RDS programme type
NEWS	News services
AFFAIRS	Politics and current affairs
INFO	Special information programs
SPORT	Sports
EDUCATE	Education and advanced training
DRAMA	Radio plays and literature
CULTURE	Culture, religion and society
SCIENCE	Science
VARIED	Entertainment programs
POP M	Pop music
ROCK M	Rock music
MOR M	Light music
LIGHT M	Light classical music
CLASSICS	Classical music
OTHER M	Special music programs
WEATHER	Weather
FINANCE	Finance
CHILDREN	Children's programs
SOCIAL	Social Affairs
RELIGION	Religion
PHONE IN	Phone In
TRAVEL	Travel
LEISURE	Leisure
JAZZ	Jazz Music
COUNTRY	Country Music
NATION M	National Music
OLDIES	Oldies Music
FOLK M	Folk Music
DOCUMENT	Documentary
TES	Alarm Test
ALARM	Alarm

8 Troubleshooting



Warning

- Never remove the casing of this device.

To keep the warranty valid, never try to repair the system yourself.

If you encounter problems when using this device, check the following points before requesting service. If the problem remains unsolved, go to the Philips Web page (www.philips.com/support). When you contact Philips, make sure that the device is nearby and the model number and serial number are available.

No power

- Make sure that the AC power cord of the device is connected properly.
- Make sure that there is power at the AC outlet.
- As a power-saving feature, the system switches off automatically 15 minutes after track play reaches the end and no control is operated.

No sound or poor sound

- Adjust the volume.
- Check that the speakers are connected correctly.
- Check if the stripped speaker wires are clamped.

No response from the unit

- Disconnect and reconnect the AC power plug, then turn on the unit again.

Remote control does not work

- Before you press any function button, first select the correct source with the remote control instead of the main unit.
- Reduce the distance between the remote control and the unit.
- Insert the battery with its polarities (+/- signs) aligned as indicated.
- Replace the battery.

- Aim the remote control directly at the sensor on the front of the unit.

No disc detected

- Insert a disc.
- Make sure that the disc is inserted with printed side facing upward.
- Wait until the moisture condensation at the lens has cleared.
- Replace or clean the disc.
- Use a finalized CD or correct format disc.

Cannot display some files in USB device

- The number of folders or files in the USB device has exceeded a certain limit. This phenomenon is not a malfunction.
- The formats of these files are not supported.

USB device not supported

- The USB device is incompatible with the unit. Try another one.

Poor radio reception

- Increase the distance between the unit and your TV or VCR.
- Connect and fully extend supplied antenna.

Music playback is unavailable on this unit even after successful Bluetooth connection.

- The device cannot be used to play music through this unit wirelessly.

The audio quality is poor after connection with a Bluetooth-enabled device.

- The Bluetooth reception is poor. Move the device closer to this unit or remove any obstacle between them.

Bluetooth cannot be connected with this unit.

- The device does not support the profiles required for this unit.
- The Bluetooth function of the device is not enabled. Refer to the user manual of the device to find out how to enable the function.
- This unit is not in pairing mode.
- This unit is already connected with another Bluetooth-enabled device. Disconnect that device and then try again.

- If you pair and connect through NFC, make sure that:
 - you have enabled both the Bluetooth and NFC features on your device.
 - you have kept the NFC area of the device in touch with that of the speaker until you heard a beep.

The paired mobile device connects and disconnects constantly.

- The Bluetooth reception is poor. Move the device closer to this unit or remove any obstacle between them.
- Some mobile phones may connect and disconnect constantly when you make or end calls. This does not indicate any malfunction of this unit.
- For some devices, the Bluetooth connection may be deactivated automatically as a power-saving feature. This does not indicate any malfunction of this unit.

Timer does not work

- Set the clock correctly.
- Switch on the timer.

Clock/timer setting erased

- Power has been interrupted or the power cord has been disconnected. Reset the clock/timer.

9 Notice

CE 0890

Any changes or modifications made to this device that are not expressly approved by WOOX Innovations may void the user's authority to operate the equipment.

Hereby, WOOX Innovations declares that this product is in compliance with the essential requirements and other relevant provisions of Directive 1999/5/EC. You can find the Declaration of Conformity on www.philips.com/support.



Your product is designed and manufactured with high quality materials and components, which can be recycled and reused.



When this crossed-out wheeled bin symbol is attached to a product it means that the product is covered by the European Directive 2002/96/EC.

Please inform yourself about the local separate collection system for electrical and electronic products.

Please act according to your local rules and do not dispose of your old products with your normal household waste. Correct disposal of your old product helps to prevent potential negative consequences for the environment and human health.



Your product contains batteries covered by the European Directive 2006/66/EC, which cannot be disposed with normal household waste. Please inform yourself about the local rules on separate collection of batteries because correct disposal helps to prevent negative consequences for the environmental and human health.

Environmental information

All unnecessary packaging has been omitted. We have tried to make the packaging easy to separate into three materials: cardboard (box), polystyrene foam (buffer) and polyethylene (bags, protective foam sheet.)

Your system consists of materials which can be recycled and reused if disassembled by a specialized company. Please observe the local regulations regarding the disposal of packaging materials, exhausted batteries and old equipment.

Be responsible
Respect copyrights

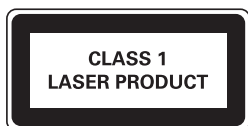
This item incorporates copy protection technology that is protected by U.S. patents and other intellectual property rights of Rovi Corporation. Reverse engineering and disassembly are prohibited.

The Bluetooth® word mark and logos are registered trademarks owned by Bluetooth SIG, Inc. and any use of such marks by WOOX Innovations is under license.



The N Mark is a trademark or registered trademark of NFC Forum, Inc. in the United States and in other countries.

This apparatus includes this label:



 Note

- The type plate is located on the back of the device.



2014 © WOOX Innovations Limited. All rights reserved.

This product was brought to the market by WOOX Innovations Limited or one of its affiliates, further referred to in this document as WOOX Innovations, and is the manufacturer of the product. WOOX Innovations is the warrantor in relation to the product with which this booklet was packaged. Philips and the Philips Shield Emblem are registered trademarks of Koninklijke Philips N.V.

BTB7150_10_UM_V2.0

