



kitsound.co.uk



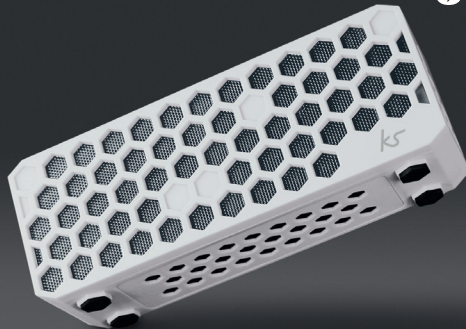
Do not dispose of Lithium Polymer  
batteries with general waste.  
Please return it to battery recycling  
collection point

ks<sup>TM</sup>

KITSOUND

# HIVE WIRELESS SPEAKER

USER MANUAL

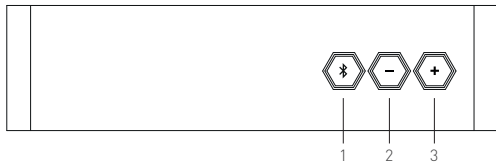




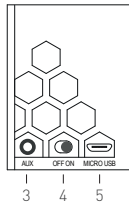
We are craftspeople. We are musicians. We are KitSound™  
And we all commit ourselves to achieving one shared goal: Bringing  
people closer to their music. By truly understanding music we stay true  
to its craft. Pure, rich, incredible sound. We'll settle for nothing less.

At KS we believe your music deserves to be showcased on great quality products that don't cost the earth. We might not all share the same taste in music (the ferocious disputes on music forums prove that), but whether it's Irish folk, death metal or any number of obscure genres which seem to be multiplying by the minute, the artists responsible for connecting with you through their craft have bared their souls to do so. And we think that's worth celebrating.





1. Bluetooth/Play/Pause
2. Volume -
3. Volume +



3. AUX in
4. Power switch
5. Micro USB charging port

## First time charging the battery

The unit has a built-in rechargeable lithium battery. Connect the one end of the USB power cable to the charging port of the main unit and connect the other end to your PC. The battery will start charging.

### Note:

- It takes approx. 4 hours to fully charge the battery
- Whilst charging, the LED will show red
- When full charged, the LED will turn green
- A fully charged unit has up to around 6-10 hours of playback time
- You can charge and play music at the same time
- When the battery is below 25% the battery LED will show red

## Battery protection mode

If you haven't used the speaker for 50 days, the speaker will switch to battery protection mode automatically.

To keep to the rechargeable battery in good condition, please discharge & recharge speaker every 3 months.


Cancel the battery protection mode:

1. Turn the ON/OFF switch to off side, and then turn the switch to ON again.
2. Connect the computer or USB charge with the DC USB cable.

## Bluetooth pairing

1. Switch power button to ON position, then press and hold the Bluetooth button for 5 seconds and the indicator light will flash red and blue alternately.
2. Search for the system with your Bluetooth device and you should see "Hive". Enter password '0000' if requested.
3. When the pairing is successful, the Bluetooth indicator light will flash slowly.

## Using the speaker

1. Volume change is done on both the speaker and the device you are playing from
2. (Vol+) Press + on the speaker
3. (Vol-) Press - on the speaker
4. (Play/Pause) Press the  button (may not work on all devices)




## AUX in

Use a 3.5 mm AUX in cable to connect your Bluetooth speaker through the AUX in socket at the bottom of the unit.

Note:

When you plug AUX in cable into AUX in socket, the current Bluetooth connection will disconnect; when you unplug the AUX in cable, the Bluetooth connection will resume.

## Hands-free

- When you have an incoming call, the music will pause
- Answer the call: Press the  button once
- End the call: Press the  button once
- To redial the last called number, press the  button twice

## Care and maintenance

Wipe the unit with a soft dry dust cloth. Do not use any wax, polish sprays or abrasive cleaners on them.

Caution: Never allow any water or other liquids to get inside the unit while cleaning.

## Troubleshooting

We hope you've now got all the information you need to get started, but if you're having problems with anything, please feel free to contact us at: [support@kitsound.co.uk](mailto:support@kitsound.co.uk)

## Specifications

- Bluetooth: v2.1
- Bluetooth range: up to 10 m
- Play time: up to 10 hours
- Output RMS: 5 W RMS (2.5 W @ 4 ohm x 2)
- S/N: 78 dB
- Frequency response: 50 Hz – 20 kHz
- Aux-in: 3.5 mm
- Unit size: D49 x H64 x W165 (mm)
- Weight: 400 g

## Box contents

- KS Hive portable speaker
- USB charge cable
- 3.5 mm cable
- Carry bag

## Notes

The Hive has been optimised for use with as many devices as possible, so if you are experiencing distortion at full volume, simply reduce the volume slightly to improve the sound quality.

We apologise for any inconvenience caused by minor inconsistencies in these instructions, which may occur as a result of product improvement and development.