

● Precaution

- 1) Do not drop or give a shock. It may cause serious damage to internal Hard Disk Drive.
- 2) Do not try disassembling. It may cause an electric shock, defect or unexpected problem.
- 3) Make sure that you have to use the AC adapter supplied with the player. If not, it may cause unexpected problem like breakdown, fire, etc.
- 4) In case the player is used or left in a completely covered and high temperature space like in a car for a long time, it may cause unexpected problem.
- 5) Do not see the light of OPTICAL connector directly. It may have a bad effect on your eyes.
- 6) Make sure that the player is not powered off suddenly during its working (playback, file transferring, firmware update etc.). In case of the sudden power off during working, you need to check HDD with Windows utility (Scan Disk) after connecting to PC.
- 7) When you disconnect the player from PC, make sure to follow "USB Device safety removal" procedure. .
- 8) Be careful not to give some damage to pins of each connector when connecting HDD to SATA cable, S-Video cable, HDMI cable.

■ Caution

- ✓ Back up your valuable data periodically to avoid any potential data loss. The user is responsible for data loss which is caused in use.
- ✓ Do not change or modify the product without permission or authority of manufacturer. It may cause undesirable operations, permanent damages or harmful interferences.

● Contents in package



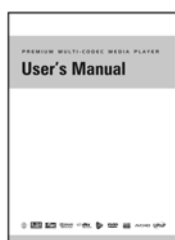
[Player]



[Remote Control]



[AC Adapter]



[User's Manual]



[USB Cable]



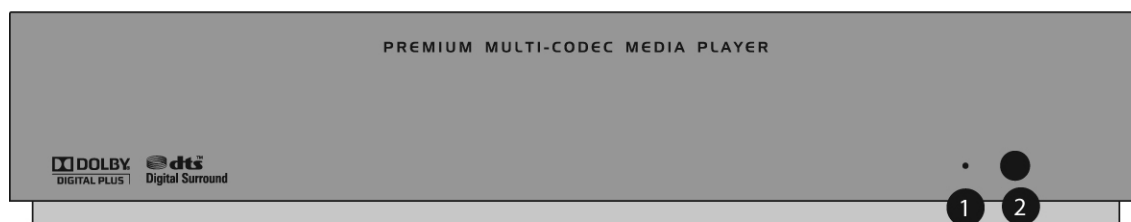
[AV Cable]



[Power Cord]

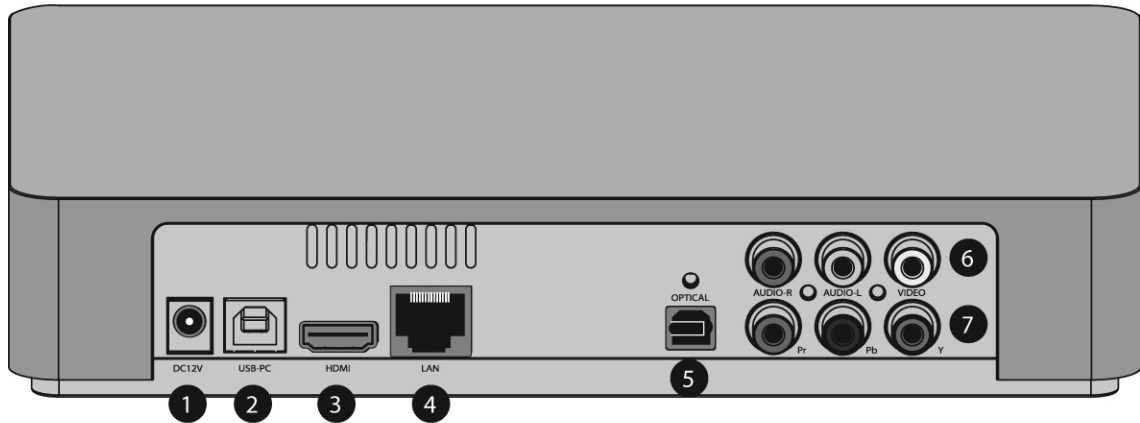
● Description

1) Front View



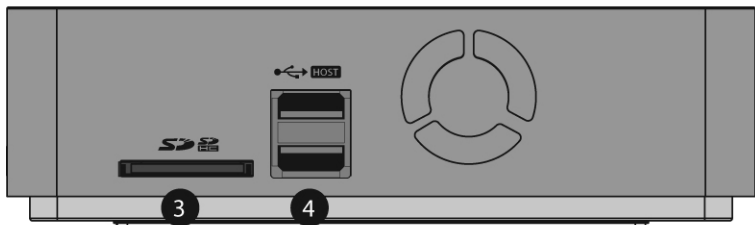
① LED ② IR Receiver

2) Rear Panel



- ① DC 12V ② USB(PC) Target Port ③ HDMI Out ④ LAN Ethernet port
⑤ Optical(digital audio) ⑥ AV OUT ⑦ Component Video output

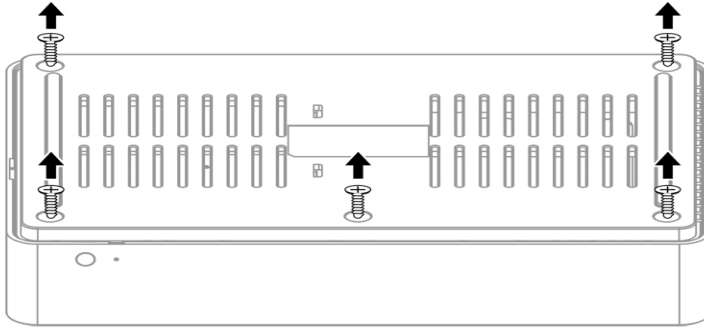
3) Side View



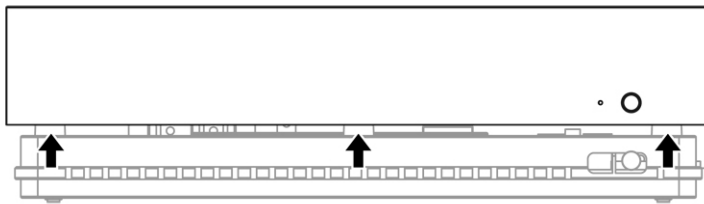
- ③SD card slot ④ USB Host port

- **Installation of hard drive (3.5" or 2.5")**

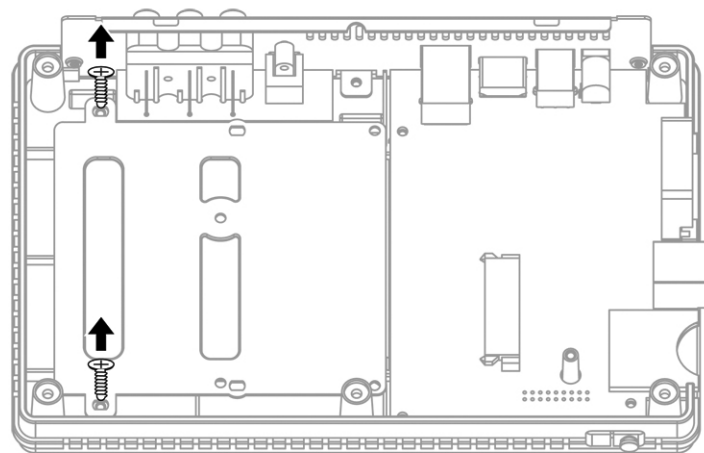
- 1) The top and bottom case come already assembled. Remove the five fixing screws on bottom case as shown in the picture below.



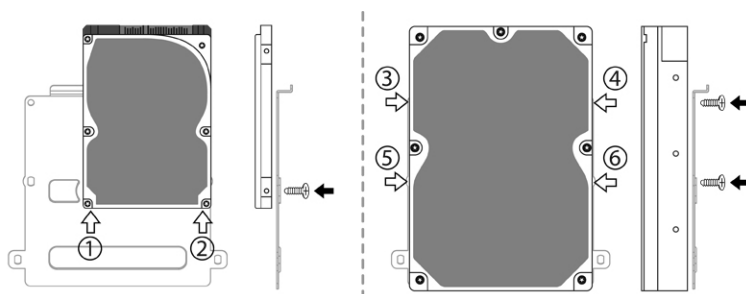
- 2) Remove the top case by lifting it up in the direction shown below.



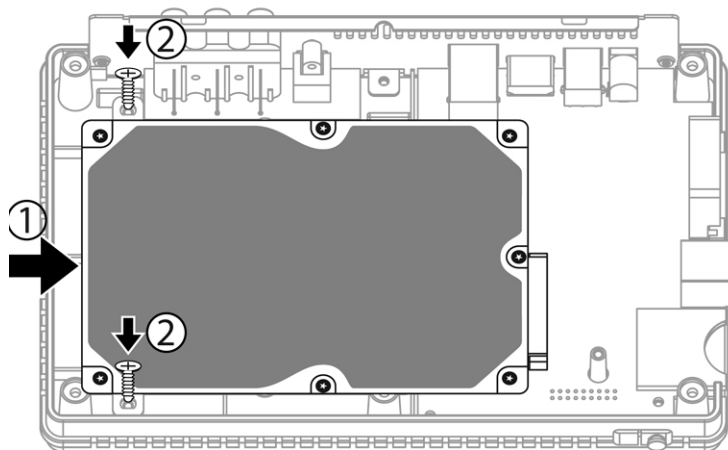
- 3) Take the drive chassis out of the bottom case after removing the two fixing screws on both sides of chassis.



- 4) Place the drive on its position of chassis, line up the holes and then insert the fixing screws supplied.



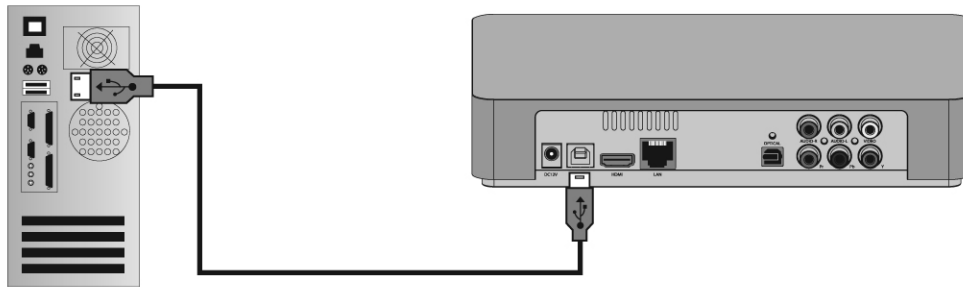
- 3.5" drive: line up the holes shown ①② and fix the screws in the direction shown in the picture
 - 2.5" drive: line up the holes shown ③④⑤⑥ and fix the screws in the direction shown in the picture
- 5) Insert the chassis into the case and then plug in the hard drive to the connector in the direction shown ①. Secure the chassis to the bottom case by fixing the screws on both sides of chassis in the direction shown ②



- 6) Assemble top cover with bottom cover by fixing the five screws

● Connection to PC

Connect the player to PC by plugging in USB cable to USB port



■ Caution

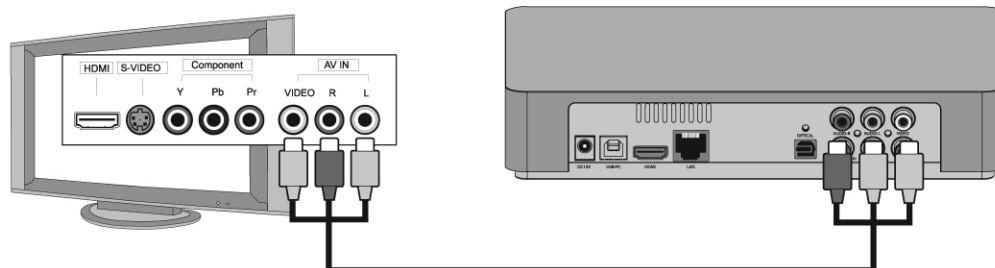
- HDD should have partition or be formatted
 - The player is compatible with both NTFS and FAT32.
NTFS is recommended because NTFS can support over 4GB file.
 - Primary partition should be more than one.
- Do not store too many files in a folder.
 - It is recommended that the files are saved in each subfolder. .
 - In case HDD Partition is generated with FAT32, it is recommended that over 3GB files should not be saved in a folder
- In case the file or folder name is too long, or has too many specific characters, blanks or period marks, it could be a problem.
- Video file and subtitle file should be saved in the same folder and have the same file name except "extension name"
- Disconnect the player from PC by double clicking "Safely remove USB mass storage device" as shown in the below picture.



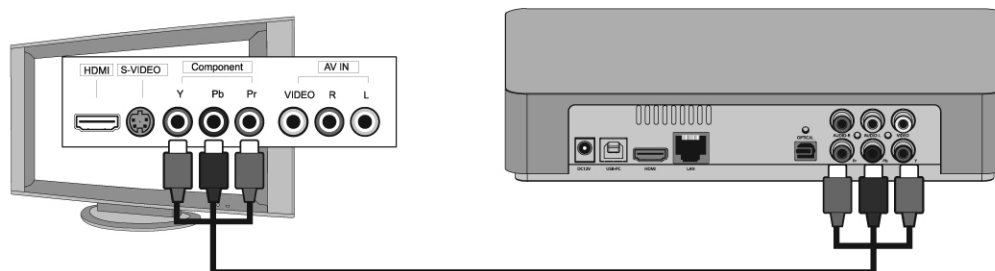
● Connection to the external devices

1) Connection to TV

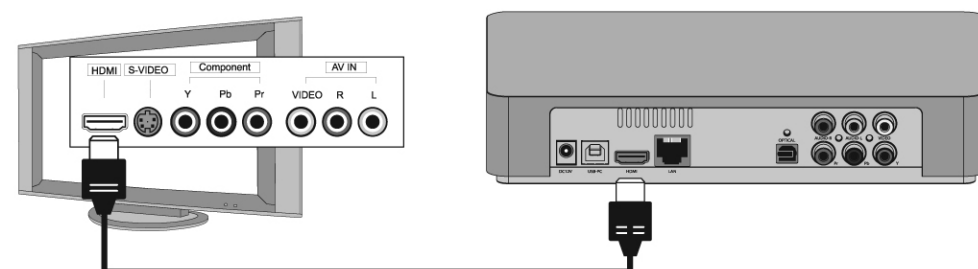
◆ Composite cable



◆ Component cable

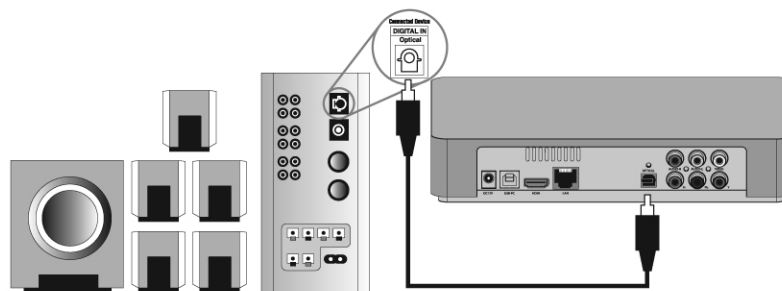


◆ HDMI Cable

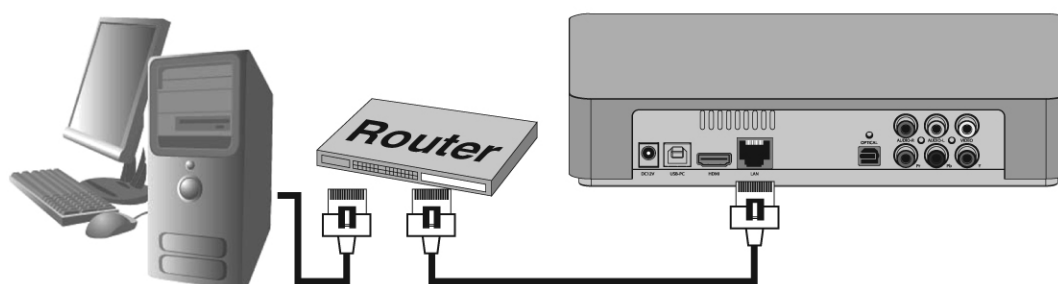


◆ Connection to Audio devices

Connect the player to audio devices by optical cable to enjoy high quality digital audio.



◆ Connection to wired LAN



◆ Connection to USB Host port



● Remote Controller



- 1) MUTE : Mute sound temporarily
- 2) SETUP : Move to "Setup" menu
- 3) TVOUT : Select TV out model
- 4) NOW PLAYING : Move to "Music Playing" mode
- 5) FAVORITE : Copy the music file which is playing to "Favorite" folder.
- 6) SHUFFLE : Select the repeat mode.
- 7) DVD MENU : Display DVD menu
- 8) HOME : Move to "Main Menu"
- 9) RETURN : Move to "Previous Menu"
- 10) INFO : Display a file information
- 11) GOTO : Move to the specific position in playing a video file
- 12) SLOW : Playback a video slowly
- 13) A-B : Repeat the desired interval while playing a video file
- 14) ZOOM : Zoom in / out
- 15) Rotate : Rotate a picture.
- 16) Bookmark : Bookmark a position during the video playback
- 17) SLEEP : Set the time which the player turns off during the video playback
- 18) Audio : Select an audio track during the video playback
- 19) S.TITLE : Select a subtitle language and adjust the size and position.
- 20) SYNC : Synchronize the video and the subtitle.

● Basic Operation

1) Media Center

Search and playback video, music and image files.

◆ TIP

Press "▶" to move to submenu and press "◀" to move to previous menu

◆ Supported Video Formats

The following video file formats are supported

- AVI
- VOB / ISO
- MKV (H.264, AVC)
- TS/TP
- M2TS
- WMV9 (VC-1)

■ Video Notes

- MPEG-2 MP@ML up to 1920x1080p24, 1920x1080i30 or 1280x720p60 resolution
- MPEG-4.2 ASP@L5 Rectangular shape video decoding up to 1920x1080p30, 1920x1080i30 or 1280x720p60 resolution
- WMV9/VC-1 MP@HL up to 1280x720p60 or 1920x1080p24 resolution.
- MPEG-4.10 (H.264) BP@L3 up to 720x480p30 or 720x576p60 resolution, including FMO and ASO
- MPEG-4.10(H.264)MP@L4.0 and HP@L4.0 up to 1920x1080p30, 1920x1080i30, or 1280x720p60 resolution

① FF / REW Playback

While a video is playing, press "◀◀" or "▶▶" for Fast Forward or REW.

② Next or Previous video playback

Press " | ◀◀" or "▶▶ | " to playback next or previous video. .

③ Volume and Mute

Press "+" or "-" to adjust the volume

Press "MUTE" for the sound off

④ Display Adjustment

Press "SETUP" to adjust the display.

- ✓ Color : 0 ~ 100
- ✓ Brightness : 0 ~ 100
- ✓ Contrast : 0 ~ 100

Press "SETUP" again to go back to "PLAY" mode.

⑤ Subtitle Adjustment

While a video is playing, press "S.TITLE" to adjust the size and position of the subtitle..

- ✓ Subtitle OFF
- ✓ Subtitle Size: Press "◀" or "▶" to adjust the size
- ✓ Subtitle Position: Press "▲" or "▼" to move the position

⑥ Bookmark

Make a video list by using "Bookmark"

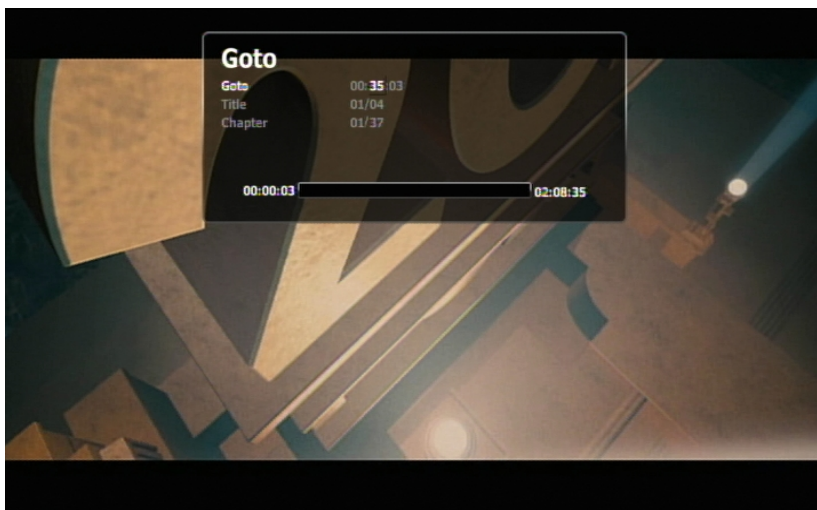
While a video is playing, press to "BOOK MARK" to add it to the bookmark list.

Press "BOOK MARK" to display the bookmark list after stop the playback.

⑦ Go To function

Press "GOTO" to skip a portion of video during the playback of a video.

- ✓ Press "GOTO", then below screen appears.



- ✓ Setup Time, Title or Chapter and press "OK"

⑧ Zoom in / out

Press "ZOOM" to zoom in or out.(Zoom-in : "▲" / Zoom-out : "▼")

Press "ZOOM" again to scroll and "◀", "▶", "▲", "▼" to move in the magnified screen.

⑨ A-B repeat

Press "A-B" to select starting point and press "A-B" again to select ending point.

Press "A-B" to stop A-B repeat.

⑩ Repeat

Press "SHUFFLE" to select "REPEAT" mode during the playback of a video.

- ✓ Normal : Play all videos in a folder once
- ✓ Repeat all : Play all videos in a folder repeatedly
- ✓ Repeat one: Play a selected video repeatedly.
- ✓ Shuffle: Play videos in a folder randomly.
- ✓ Once : Play a selected video once

◆ Audio Playback

① Repeat

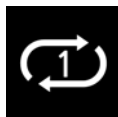
Press "SHUFFLE" to select "REPEAT" mode during the playback of a music..



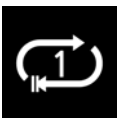
Play all music in a folder once



Play all music in a folder repeatedly



Play selected music repeatedly



Play selected music once



Play music in a folder randomly

◆ Image

① Slideshow

Setup the slideshow interval and effectiveness in "SETUP" menu.



After that, move to the folder where images are saved.
Select an images and press "OK" to play "SLIDESHOW"

② Background Music

Make "Background Music" enable in "SETUP" menu. .



When images playback, the background music also playback at the same time.

■ **Caution**

In order to play the background music, audio files and images files should be saved in the same folder.

③ Zoom in / out

Press "ZOOM" to zoom in or out.(Zoom-in : "▲" / Zoom-out : "▼")

Press "ZOOM" again to scroll and "◀", "▶", "▲", "▼" to move in the magnified screen.

④ Rotation

Press "ROTATE" to rotate an image clockwise by 90 degree.

2) Internet Radio

In order to add Internet Radio Station, save "M3U" or "PLS" file format playlists in HDD to playback "Internet Radio"

- ① Search Internet Radio Station and make a playlist in M3U or PLS file format.
- ② Save the playlist in "Internet Radio" folder
- ③ Connect the player to wireless network.
- ④ Select an internet radio station in the list and press "OK", then Internet Radio begins.

3) File Manager

Move, copy, delete or rename a file or folder.

◆ Move or Copy

Press "OK" to select the file or folder which you intend to move or copy.



After selecting files or folders, press "►". Then, the below screen appears.



Select "Copy" or "Move".

Navigate to the preferred destination folder and press "OK" to start copying the selected files into the destination folder.



Select "New Folder" to copy or move the files to the new folder and input a folder name like the below picture..



◆ Delete

Press "OK" to select the file or folder which you intend to delete

After selecting files or folders, press "►". Then, the below screen appears



Press "OK" to delete.

◆ Rename

Press "OK" to select the file or folder which you intend to rename

After selecting files or folders, press "►" and press "OK" to select "Rename"

Then, the below screen appears



Change the name and press "OK"

4) Setup

◆ Video

① Aspect Ratio

Letter Box 4:3 / Pan & Scan 4:3 / 16:9

② Brightness / Contrast / Saturation



③ TV System

NTSC / PAL

④ TV Out

480p / 720p / 1080i / 1080p / HDMI Auto

◆ Audio

① DRC Mode : On / Off

If this mode is on, the suddenly loud sound becomes softer automatically

② Analog Output

On / Off

③ SPDIF

PCM 2CH / Pass Through

④ HDMI

Off / PCM 2CH / Pass Through

◆ Slide Show

① Slide Show Timing

Off / 2 sec. / 5 sec. / 10 sec. / 30 sec. / 1min / 2min / 5min

② Slide Show Effect

Off / Left to Right / Top to Bottom / Fade In, out / Overwrite / All

③ Background Music

On / Off

◆ Network

① FTP Server

On / Off / Username / Password

② Connection

None : Disconnect the player to wireless network..

Wireless : Connect the player to the network with WIFI USB dongle

i) Select SSID in the list and press "OK"

ii) Input "Password"

iii) Press "OK" to connect

③ Network Info

Press "OK" to display the network information

◆ System

① OSD Language

Use this option to select the display language

② Auto Play (On / Off)

The video in "auto" folder playback automatically when the power is on.

◆ Tip

"AUTO PLAY" folder should be generated in the first partition of HDD and video file should be in "auto" folder to use "Auto Play" function.

③ Screen Saver

Off / 3 min. / 5 min. / 10 min. / 30 min. / 60 min.

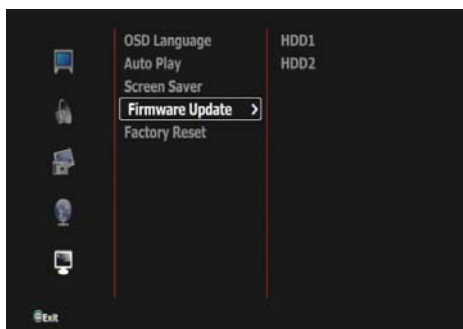
④ Firmware Update

■ Caution

Make sure AC power adapter remains connected during the firmware update.
A power disruption during the update process can corrupt the system firmware.
If the power is off during firmware update, fatal damage may be caused to the product

i) Save "firmware.pkg" in HDD

ii) Move to "Firmware Update" in SETUP and press "►"



iii) The folders and file list is displayed as the below picture

Move to the folder where "firmware.pkg" is saved and press "OK" to select "firmware.pkg"



iv) Select "Yes" and press "OK"



v) The player automatically reboots to update firmware

vi) If the firmware update is complete, the new firmware version number is displayed in "SYSTEM" menu



⑤ Factory Reset

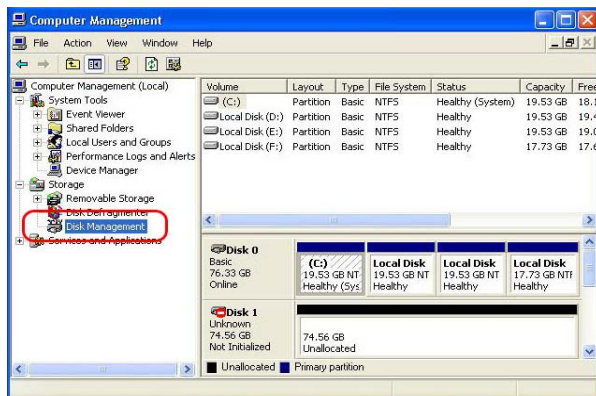
Use this option to restore all the system preferences and playback settings to their default factory values. Factory Reset corrects performance problems caused by the faulty configuration settings.

● HDD Partition

■ Caution

As HDD Partition and Format will delete all data, backup your data.

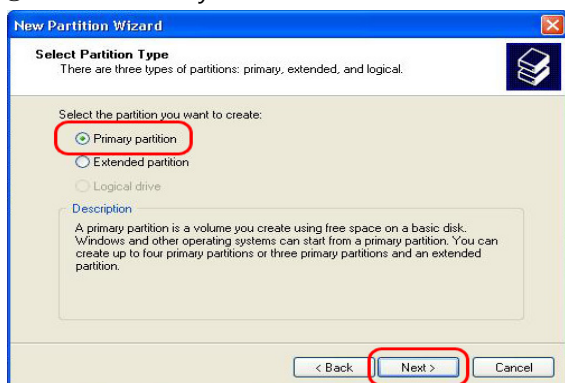
- ① Right-click on **My Computer**, and select **Manage** to open "Computer Management" as below.



- ② Right-click HDD in the list and select "New Partition" to create new partitions.
- ③ Click "Next"



- ④ Select "Primary Partition" and click "Next"



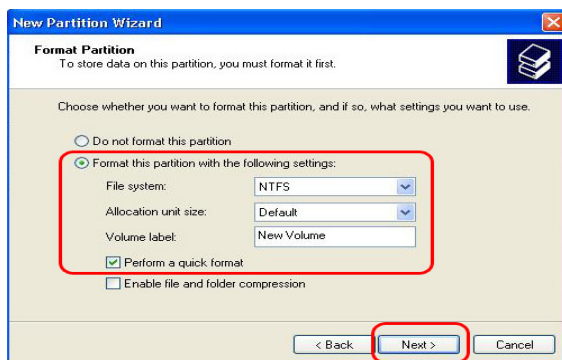
- ⑤ Select the partition size and click "Next"



⑥ Click "Next"



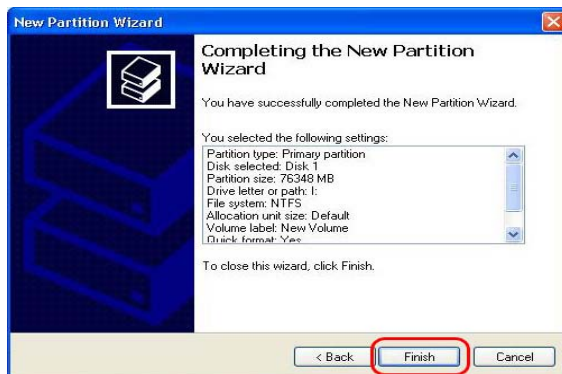
⑦ Setup the file system and click "Next"



◆ Tip

The player can support both "NTFS" and "FAT32". We recommend "NTFS" for more stable operation because "NTFS" can support a large file more than 4GB.

⑧ Click "Finish" to proceed "HDD Partition"



● Trouble Shooting

Before contacting your local service center, please read the tips below carefully. If the problem persists after completing the following procedure, please contact your local product distributor for further instructions.

Problem	What to do
The TV screen is blank and the media player power LED remains off	<ul style="list-style-type: none">▶ Make sure the TV is turned on.▶ Make sure that the power adapter and power outlet are okay.
The TV screen is blinking and fuzzy	<ul style="list-style-type: none">▶ Make sure the power LED of media player is on.▶ Make sure the TV system setting matches the system used in your region▶ If your TV is a LCD TV, make sure that the HDMI option is selected as the video output.
No or poor sound	<ul style="list-style-type: none">▶ Check that your AV cable is correctly connected.▶ Check if the media player or TV is on mute▶ Check audio type or sound track option in the AV menu. (where applicable)
The attached USB device is not visible on the browser menu.	<ul style="list-style-type: none">▶ Make sure that the USB device is configured as a "mass storage device"▶ Make sure the USB device's file system is supported.
The remote control unit does not work	<ul style="list-style-type: none">▶ Make sure the batteries are properly inserted▶ The battery may already be drained out. Replace battery with new one▶ Make sure that the path between the remote control and the media player is not blocked.
File does not play	<ul style="list-style-type: none">▶ Verify compatibility.▶ Use a media converter program to convert the file to a usable format. (media converter program is not supplied)
Does not recognize the hard disk	Make sure that the hard disk has been correctly partitioned and formatted.

● Specification

Chipset		SIGMA SMP 8653 500MHz MIPS
Supported format & codec		
Video	Format	MKV, MOV, WMV, MP4, M4V, ASF, ISO, IFO, VOB, AVI, M2TS, MTS, MPG, MPEG, DAT, TP, TS, TRP
	Codec	H.264, MPEG1/2/4, WMV9, WMV9 HD, VCD, SVCD
Audio	Format & Codec	FLAC, MP3, WAV, WMA, AAC, M4A, Ogg Vorbis, PCM, Dolby Digital, Dolby Digital Plus, DTS (Down mixing & Pass through), WMA9 2.0, WMA9 Pro
	Playlist	M3U, PLS
Photo		Lossless JPEG(Progressive JPEG not supported), PNG, GIF, BMP
Subtitle		SRT, SMI, SUB, IDX+SUB, SSA, ASS
*** Although this player supports the listed formats, it might not be able to support every codec used to create the files.		
Video and Audio Out		
Viedo-Out		HDMI 1.3, Composite, Component
Audio-Out		Optical(Digital), Stereo(Analog)
USB		USB 2.0 Target Port x 1EA, USB 2.0 Host Port x 2EA
Network	Ethernet 10/100	
	Wireless LAN(802.11n) : USB Dongle Type (Optional)	
SD & Micro SD		SD & Micro SD card reader x 1EA
HDD to be used	2.5" SATA I/II HDD	
	NTFS, FAT32	
Compatible OS		Windows 98SE, ME, 2000, XP, Vista, Windows 7
Physical Dimension		116 mm(W) x 96mm(D) x 23 mm(H)
AC/DC Adapter		Input : AC 90V ~ 250V free voltage Output : DC 12V

■ The specifications are subject to change without notice