

***Grizzly***  
***Industrial, Inc.*** ®

**OSCILLATING SPINDLE SANDER  
MODEL G9922  
INSTRUCTION MANUAL**



COPYRIGHT © 2000 BY GRIZZLY INDUSTRIAL, INC.  
WARNING: NO PORTION OF THIS MANUAL MAY BE REPRODUCED IN ANY SHAPE  
OR FORM WITHOUT THE WRITTEN APPROVAL OF GRIZZLY INDUSTRIAL, INC.  
PRINTED IN CHINA.



# **WARNING!**

**Some dust created by power sanding, sawing, grinding, drilling, and other construction activities contains chemicals known to the State of California to cause cancer, birth defects or other reproductive harm. Some examples of these chemical are:**

- **Lead from lead-based paints.**
- **Crystalline silica from bricks, cement and other masonry products.**
- **Arsenic and chromium from chemically-treated lumber.**

**Your risk from these exposures varies, depending on how often you do this type of work. To reduce your exposure to these chemicals: Work in a well ventilated area, and work with approved safety equipment, such as those dust masks that are specially designed to filter out microscopic particles.**

# Table Of Contents

	PAGE
<b>1. SAFETY</b>	
SAFETY RULES FOR ALL TOOLS .....	2-3
ADDITIONAL SAFETY INSTRUCTIONS FOR SANDERS .....	4
<b>2. CIRCUIT REQUIREMENTS</b>	
110V OPERATION .....	5
FUSING .....	5
EXTENSION CORDS .....	5
GROUNDING .....	5
<b>3. INTRODUCTION</b>	
COMMENTARY .....	6
UNPACKING.....	7
PARTS INVENTORY .....	7
CLEAN UP .....	8
SITE CONSIDERATIONS .....	8
<b>4. ASSEMBLY</b>	
OVERVIEW.....	9
<b>5. OPERATIONS</b>	
TEST RUN .....	10
GENERAL SANDING .....	10
<b>6. MAINTENANCE</b>	
GENERAL.....	11
SANDER TABLES .....	11
LUBRICATION .....	11
DISC & BELT REPLACEMENT .....	11
<b>7. CLOSURE .....</b>	<b>12</b>
<b>MACHINE DATA .....</b>	<b>13</b>
<b>PARTS DIAGRAMS .....</b>	<b>14</b>
<b>PARTS LIST .....</b>	<b>15</b>
<b>TROUBLESHOOTING .....</b>	<b>16</b>
<b>WARRANTY AND RETURNS.....</b>	<b>17</b>

# SECTION 1: SAFETY

## WARNING

### For Your Own Safety Read Instruction Manual Before Operating This Equipment

The purpose of safety symbols is to attract your attention to possible hazardous conditions. This manual uses a series of symbols and signal words which are intended to convey the level of importance of the safety messages. The progression of symbols is described below. Remember that safety messages by themselves do not eliminate danger and are not a substitute for proper accident prevention measures.



Indicates an imminently hazardous situation which, if not avoided, WILL result in death or serious injury.



Indicates a potentially hazardous situation which, if not avoided, COULD result in death or serious injury.



Indicates a potentially hazardous situation which, if not avoided, MAY result in minor or moderate injury. It may also be used to alert against unsafe practices.

## NOTICE

This symbol is used to alert the user to useful information about proper operation of the equipment.

## WARNING

### Safety Instructions For Power Tools

1. **KEEP GUARDS IN PLACE** and in working order.
2. **REMOVE ADJUSTING KEYS AND WRENCHES.** Form habit of checking to see that keys and adjusting wrenches are removed from tool before turning on.
3. **KEEP WORK AREA CLEAN.** Cluttered areas and benches invite accidents.
4. **DON'T USE IN DANGEROUS ENVIRONMENT.** Don't use power tools in damp or wet locations, or where any flammable or noxious fumes may exist. Keep work area well lighted.
5. **KEEP CHILDREN AND VISITORS AWAY.** All children and visitors should be kept a safe distance from work area.
6. **MAKE WORK SHOP CHILD PROOF** with padlocks, master switches, or by removing starter keys.
7. **DON'T FORCE TOOL.** It will do the job better and safer at the rate for which it was designed.
8. **USE RIGHT TOOL.** Don't force tool or attachment to do a job for which it was not designed.

# WARNING

## Safety Instructions For Power Tools

- 9. USE PROPER EXTENSION CORD.** Make sure your extension cord is in good condition. Conductor size should be in accordance with the chart below. The amperage rating should be listed on the motor or tool nameplate. An undersized cord will cause a drop in line voltage resulting in loss of power and overheating. Your extension cord must also contain a ground wire and plug pin. Always repair or replace extension cords if they become damaged.

Minimum Gauge for Extension Cords

AMP RATING	LENGTH		
	25ft	50ft	100ft
0-6	18	16	16
7-10	18	16	14
11-12	16	16	14
13-16	14	12	12
17-20	12	12	10
21-30	10	10	No

- 10. WEAR PROPER APPAREL.** Do not wear loose clothing, gloves, neckties, rings, bracelets, or other jewelry which may get caught in moving parts. Non-slip footwear is recommended. Wear protective hair covering to contain long hair.
- 11. ALWAYS USE SAFETY GLASSES.** Also use face or dust mask if cutting operation is dusty. Everyday eyeglasses only have impact resistant lenses, they are NOT safety glasses.
- 12. SECURE WORK.** Use clamps or a vise to hold work when practical. It's safer than using your hand and frees both hands to operate tool.

- 13. DON'T OVERREACH.** Keep proper footing and balance at all times.
- 14. MAINTAIN TOOLS WITH CARE.** Keep tools sharp and clean for best and safest performance. Follow instructions for lubricating and changing accessories.
- 15. DISCONNECT TOOLS** before servicing and changing accessories, such as blades, bits, cutters, and the like.
- 16. REDUCE THE RISK OF UNINTENTIONAL STARTING.** Make sure switch is in off position before plugging in.
- 17. USE RECOMMENDED ACCESSORIES.** Consult the owner's manual for recommended accessories. The use of improper accessories may cause risk of injury.
- 18. CHECK DAMAGED PARTS.** Before further use of the tool, a guard or other part that is damaged should be carefully checked to determine that it will operate properly and perform its intended function. Check for alignment of moving parts, binding of moving parts, breakage of parts, mounting, and any other conditions that may affect its operation. A guard or other part that is damaged should be properly repaired or replaced.
- 19. NEVER LEAVE TOOL RUNNING UNATTENDED. TURN POWER OFF.** Don't leave tool until it comes to a complete stop.

## **WARNING**

# Additional Safety Instructions For Sanders

1. **BE AWARE OF SPINDLE** rotation when sanding.
2. **KEEP FINGERTIPS AWAY** from the moving spindle. Serious injury could result if skin contacts abrasives or moving parts.
3. **NEVER USE EXCESSIVE FORCE** when sanding. Doing this greatly increases the chances of personal injury and motor overload.
4. **ALWAYS FEED THE WORK** against the direction of rotation.
5. **EVEN IF YOU HAVE A** reliable method of dust collection, use a dust mask or respirator when sanding, as well as eye and ear protection.
6. **IF THERE IS ANY** doubt as to the stability or integrity of the material to be sanded, **don't sand it.**
7. **DO NOT OPERATE SANDER** with a damaged or badly worn sanding sleeve.
8. **TIE BACK LONG HAIR** and remove any loose-fitting clothing or jewelry that could be caught up in the sander's spindle or other moving machine parts.
9. **HABITS — GOOD OR BAD** — are hard to break. Develop good habits and safety will become second nature to you.

## **WARNING**

Like all power tools, there is danger associated with the Model G9922 Oscillating Spindle Sander. Accidents are frequently caused by lack of familiarity or failure to pay attention. Use this tool with respect and caution to lessen the possibility of operator injury. If normal safety precautions are overlooked or ignored, serious personal injury may occur.

## **CAUTION**

No list of safety guidelines can be complete. Every shop environment is different. Always consider safety first, as it applies to your individual working conditions. Use this and other machinery with caution and respect. Failure to follow guidelines could result in serious personal injury, damage to equipment or poor work results.

## **WARNING**

Operation of this equipment has the potential to propel debris into the air which can cause eye injury. Always wear safety glasses or goggles when operating equipment. Everyday glasses or reading glasses only have impact resistant lenses, they are not safety glasses. Be certain the safety glasses you wear meet the appropriate standards of the American National Standards Institute (ANSI).

# SECTION 2: CIRCUIT REQUIREMENTS

## 110V Operation

The Model G9922 is wired for 110/120V, single phase operation only. The ½ HP motor will safely draw 4.5 amps at 110V. If you operate this sander on any circuit that is already close to its capacity, it might blow a fuse or trip a circuit breaker. However, if an unusual load does not exist and a power failure still occurs, contact a qualified electrician or our service department.



## Fusing

A 15-amp fuse or circuit breaker should be used when fusing this oscillating spindle sander. Circuits rated any higher are not adequate to protect the wiring.

Equipment returned to us for service that shows evidence of being over-fused will be repaired or replaced totally at the customer's expense, regardless of the present warranty status.



## Extension Cords

If you find it necessary to use an extension cord with the Model G9922, make sure the cord is rated Hard Service (grade S) or better. Refer to the chart in the standard safety instructions to determine the minimum gauge for the extension cord. The extension cord must also contain a ground wire and plug pin. Always repair or replace extension cords when they become worn or damaged.

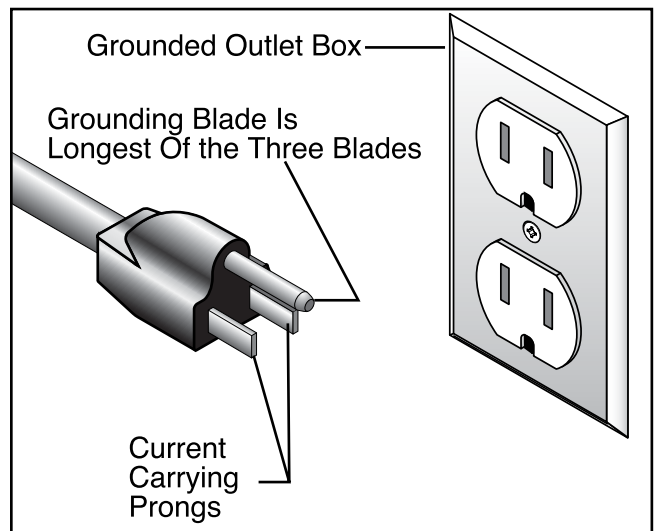


## Grounding

In the event of an electrical short, grounding reduces the risk of electric shock by providing a path of least resistance to disperse electric current. This tool is equipped with a power cord having an equipment-grounding conductor. **See Figure 1.** The outlet must be properly installed and grounded in accordance with all local codes and ordinances.

### **⚠ WARNING**

**This equipment must be grounded. Verify that any existing electrical outlet and circuit you intend to plug into is actually grounded. If it is not, it will be necessary to run a separate 12 A.W.G. copper grounding wire from the outlet to a known ground. Under no circumstances should the grounding pin from any three-pronged plug be removed. Serious injury may occur.**



**Figure 1.** Grounded plug configuration.



# SECTION 3: INTRODUCTION

---

---

## Commentary

---

---

We are proud to offer the Grizzly Model G9922 Oscillating Spindle Sander. The Model G9922 is part of a growing Grizzly family of fine wood-working machinery. When used according to the guidelines set forth in this manual, you can expect years of trouble-free, enjoyable operation and proof of Grizzly's commitment to customer satisfaction.

The Model G9922 is a stationary sander that is capable of a wide variety of operations. The 2" x 5½" sanding spindle enables you to sand endless contours on the edge or surface of wood or plastic. The G9922 comes complete with motor and electrical package.

A number of sanding sleeves for the Model G9922 are available through the Grizzly catalog.

We are also pleased to provide this manual with the Model G9922. It was written to guide you through assembly, review safety considerations, and cover general operating procedures. It represents our effort to produce the best documentation possible. If you have any comments regarding this manual, please write to us at the address below:

Grizzly Industrial, Inc.  
c/o Technical Documentation  
P.O. Box 2069  
Bellingham, WA 98227-2069

Most importantly, we stand behind our machines. If you have any service questions or parts requests, please call or write us at the location listed below.

Grizzly Industrial, Inc.  
2406 Reach Road  
Williamsport, PA 17701  
Phone: (570) 546-9663  
Fax: (800) 438-5901  
E-Mail: [techsupport@grizzly.com](mailto:techsupport@grizzly.com)  
Web Site: <http://www.grizzly.com>

The specifications, drawings, and photographs illustrated in this manual represent the Model G9922 as supplied when the manual was prepared. However, owing to Grizzly's policy of continuous improvement, changes may be made at any time with no obligation on the part of Grizzly. Whenever possible, though, we send manual updates to all owners of a particular tool or machine. Should you receive one, we urge you to insert the new information with the old and keep it for reference.

### CAUTION

**To operate this, or any power tool, safely and efficiently, it is essential to become as familiar with its characteristics as possible. The time you invest before you begin to use your Model G9922 will be time well spent. DO NOT operate this machine until you are completely familiar with the contents of this manual. Make sure you read and understand all of the safety procedures. If you do not understand something, DO NOT operate the machine.**





# Unpacking

---

---

This Oscillating Spindle Sander is shipped from the manufacturer in a carefully packed carton. If you discover the machine is damaged after you've signed for delivery, and the truck and driver are gone, you will need to file a freight claim with the carrier. Save the containers and all packing materials for possible inspection by the carrier or its agent. Without the packing materials, filing a freight claim can be difficult. If you need assistance determining whether you need to file a freight claim, or with the procedure to file one, please contact our Customer Service.

When you are completely satisfied with the condition of your shipment, you should inventory its parts.



# Parts Inventory

---

---

After all the parts have been removed from the carton, you should have:

- Oscillating Spindle Sander
- Working Table
- Sanding Drum
- Sanding Sleeve
- 5mm Allen® Wrench
- Double End Wrench 17x19mm
- Double End Wrench 12x14mm
- Stand Brackets (12)
- Miter Gauge
- Fasteners

Hardware	Qty
Hex Nut M8	20
Flat Washers M8	20
Lock Washer M8	20
Pan Head Screw M8 X 16mm	20

## NOTICE

A full parts list and breakdown can be found toward the end of this manual. For easier assembly, or to identify missing parts, please refer to the detailed illustrations at the end of the manual.



# Clean Up

---

---

Unpainted machine surfaces may be coated with a waxy oil to protect them from corrosion during shipment. Remove this protective coating with a solvent cleaner or Grizzly's G7895 citrus-based degreaser. Avoid chlorine-based solvents as they may damage painted surfaces should they come in contact. Always follow the usage instructions on the product you choose for clean up.

## CAUTION

Many of the solvents commonly used to clean machinery can be highly flammable, and toxic when inhaled or ingested. Always work in well-ventilated areas far from potential ignition sources when dealing with solvents. Use care when disposing of waste rags and towels to be sure they do not create fire or environmental hazards. Keep children and animals safely away when cleaning and assembling this machine.

## WARNING

Do not use gasoline or other petroleum-based solvents to remove this protective coating. These products generally have low flash points which makes them extremely flammable. A risk of explosion and burning exists if these products are used. Serious personal injury may occur.



# Site Consideration

---

---

## WORKING CLEARANCES

Working clearances can be thought of as the distances between machines and obstacles that allow safe operation of every machine without limitation. Ensure that your working area offers plenty of room for free movement and a substantial amount of distance between you and others that may be working in your shop area.

## LIGHTING AND OUTLETS

Lighting should be bright enough to eliminate shadow and prevent eye strain. Electrical circuits should be dedicated or large enough to handle combined motor amp loads. Outlets should be located near each machine so power or extension cords are not obstructing high-traffic areas. Be sure to observe local electrical codes for proper installation of new lighting, outlets, or circuits.

## CAUTION

Make your shop "child safe". Ensure that your workplace is inaccessible to youngsters by closing and locking all entrances when you are away. Never allow visitors in your shop when assembling, adjusting or operating equipment.



# SECTION 4: ASSEMBLY

---

---

## Overview

---

---

Most of your G9922 Oscillating Spindle Sander has been assembled at the factory. The few pieces that remain should go together quickly and easily. Only a few common tools are required to assemble your oscillating spindle sander. 12 x 14mm and 17 x 19mm double-end wrenches, as well as an 8mm Allen® wrench are provided with the machine. The following list provides the recommended order in which the sander should be assembled:

- Steel Stand
- Sanding Unit and Stand
- Table and Sanding unit
- Spindle Sander

Before beginning the assembly process, we recommend you become familiar with the Model G9922 Oscillating Spindle Sander's parts and controls. See the Parts Diagram at the end of the manual for details.

### CAUTION

**All die-cut metal parts have a sharp edge (called "flashing") on them after they are formed. This is generally removed at the factory. Sometimes a bit of flashing might escape inspection, and the sharp edge may cause cuts or lacerations when handled. Please examine the edges of all die-cut metal parts and file or sand the edge to remove the flashing before handling.**



# SECTION 5: Operations

---

---

## Test-Run

---

---

Before you put your oscillating spindle sander into use, give it a quick inspection. Before inspecting, ensure that the machine is switched off and disconnected from its power source.

1. Are all fasteners tight?
2. Is the sanding sleeve properly installed and secured?
3. Rotate the spindle slowly by hand. Look and listen for any scraping noises or anything that impedes smooth movement. Make appropriate adjustments before attempting to run the machine.
4. If the sander appears to be free of problems that might affect its operation, plug it in to its power source and start the machine. Be sure to keep a finger on the OFF button, just in case of a problem with the machine. Allow to run briefly to allow inspection of spindle rotation.
5. Turn off the machine, disconnect it from its power source, and re-inspect for loose fasteners.

## General Sanding

---

---

For general wood sanding, position and secure table, turn the machine on and place workpiece on table. While securely holding workpiece, slowly feed against the spindle and maintain constant pressure against the table. Use caution when sanding end-grain.

Table can be tilted at angles up to 45° to allow sanding of angled edges. Simply loosen the knobs located on either side of the table base and set to desired angle. Always check angle measurement against an adjustable angle finder.



### **WARNING**

**Never use the Model G9922 for applications other than those for which it was made. DO NOT overload the machine or use excess force when sanding. Severe personal injury, damage to the machine, or damage to your workpiece could occur.**



# SECTION 6: MAINTENANCE

---

---

## General

---

---

Make a habit of inspecting your sander each time you use it. Check for the following conditions and repair or replace when necessary.

1. Loose mounting bolts.
2. Worn switch.
3. Worn or damaged cords and plugs.
4. Loose Sanding Spindle and Sleeve.



## Sander Tables

---

---

The working table and other non-painted surfaces on the Model G9922 should be protected against rust and pitting. Some woodworkers recommend using automotive paste wax on exposed steel and cast iron surfaces. If you use paste wax, make sure that it's 100% Carnauba wax and does not contain silicone.



## Lubrication

---

---

Shielded and pre-lubricated ball bearings require no lubrication.



## Sanding Sleeves

---

---

The spindle accepts 2" x 5½" sanding sleeves. For spindle sanding, we recommend a 100 grit (medium) material for general purpose sanding, a 60 grit (coarse) material for rough work, and a 150 grit (fine) material for finish jobs.



# SECTION 7: CLOSURE

---

The following pages contain general machine data, parts diagrams/lists, troubleshooting guide and Warranty/Return information for your Model G9922 Oscillating Spindle Sander.

If you need parts or help in assembling your machine, or if you need operational information, we encourage you to call our Service Department. Our trained service technicians will be glad to help you.

If you have comments dealing specifically with this manual, please write to our Bellingham, Washington location using the address in Section 3: Introduction.

We have included some important safety measures that are essential to this machine's operation. While most safety measures are generally universal, Grizzly reminds you that each workshop is different and safety rules should be considered as they apply to your specific situation.

We recommend you keep a copy of our current catalog for complete information regarding Grizzly's warranty and return policy. If you need additional technical information relating to this machine, or if you need general assistance or replacement parts, please contact the Service Department listed in Section 3: Introduction.

Additional information sources are necessary to realize the full potential of this machine. Trade journals, woodworking magazines, and your local library are good places to start.

## WARNING

The Model G9922 was specifically designed for sanding operations only. **DO NOT MODIFY AND/OR USE THIS MACHINE FOR ANY OTHER PURPOSE.** Modifications or improper use of this tool will void the warranty. If you are confused about any aspect of this machine, **DO NOT** use it until you have answered all your questions. **Serious personal injury may occur.**

## WARNING

Like all power tools, there is danger associated with the Model G9922 Oscillating Spindle Sander. Accidents are frequently caused by lack of familiarity or failure to pay attention. Use this tool with respect and caution to lessen the possibility of operator injury. If normal safety precautions are overlooked or ignored, serious personal injury may occur.

## WARNING

Operating this equipment has the potential to launch flying debris which could cause eye injury. Always wear safety glasses or goggles when operating equipment. Everyday glasses or reading glasses only have impact resistant lenses, they are not safety glasses. Be certain the safety glasses you wear meet the appropriate standards of the American National Standards Institute (ANSI).





# MACHINE DATA SHEET

Customer Service #: (570) 546-9663 • To Order Call: (800) 523-4777 • Fax #: (800) 438-5901

## GRIZZLY MODEL G9922 OSCILLATING SPINDLE SANDER

Design Type ..... Floor Model

### Overall Dimensions and Specifications:

Table .....14½" x 14½"  
Floor to Table Height .....39½"  
Spindle Size .....2" x 5½"  
Net Weight .....86 lbs.  
Dust Port .....2"  
Footprint .....25" x 25½"

### Construction:

Stand .....Stamped Steel-Welded Assembly  
Table .....Ground Cast Iron

### Motor:

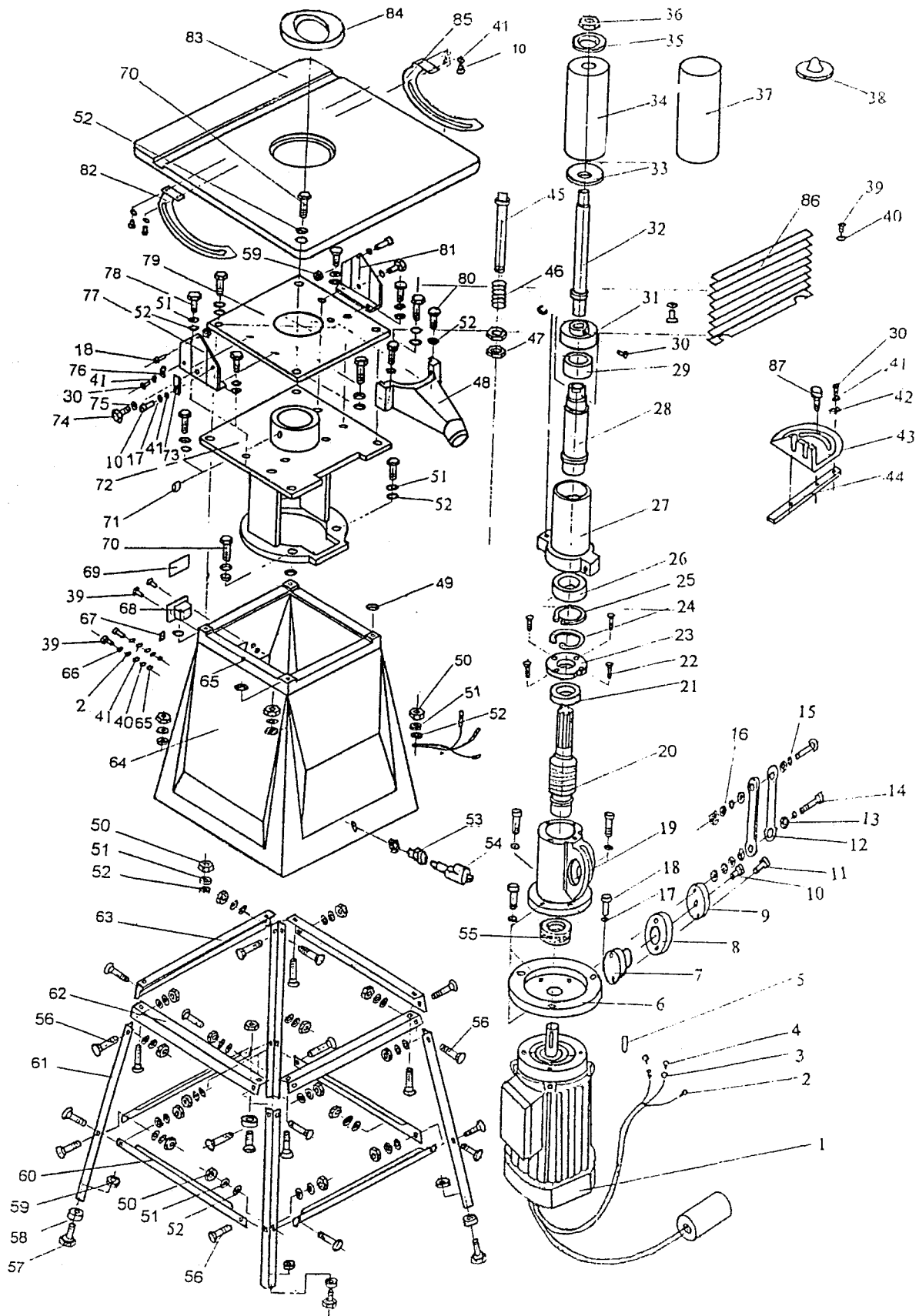
Type .....TEFC Capacitor Start Induction  
Horsepower .....½ HP  
Phase / Voltage ..... Single Phase / 110V  
Amps .....4.6  
Cycle / RPM .....60 Hertz / 3450 RPM  
Switch .....On/Off Toggle w/Safety Lock  
Power Transfer .....Direct Drive

### Features:

Stroke Length .....1"  
Table Opening .....5½"  
Table Inserts .....1  
Table Tilt .....45°  
Oscillations .....64/Minute  
Includes .....80 Grit Sleeve For Spindle, Miter Gauge and Wrench Set

Specifications, while deemed accurate, are not guaranteed.

REVISED 11/00



G9922 Oscillating Spindle Sander



REF	PART #	DESCRIPTION
01	G2902	Motor
02	P992202	Ground Ring Connector
03	P992203	Power Fork Connector
04	P992204	Plastic Connector Sleeve
05	P992205	Flat Key
06	P992206	Connection Plate
07	P992207	Worm Gear Shaft
08	P992208	Worm Gear
09	P992209	End Cover of Worm Gear
10	P992210	M5 x 10 Bolt
11	P992211	M5 x 25 Bolt
12	P992212	Connecting Bar
13	P992213	Adopting Sleeve
14	P992214	Longitudinal Screw
15	PW02M	M5 Washer
16	PN06M	M5 Nut
17	PW03M	M6 Washer
18	PB10M	M6 x 25 Screw
19	P992219	Bearing Base
20	P992220	Worm Shaft
21	P992221	Ball Bearing 102
22	PSB17M	M4 x 10 Screw
23	P992223	Cover
24	P992224	Retaining Ring (Internal)
25	P992225	Retaining Ring (External)
26	P992226	Bearing 80106
27	P992227	Spindle Sleeve Stabilizer
28	P992228	Spindle Component
29	P992229	Needle Bearing 4084103
30	P992230	M5 x 6 Screw
31	P992231	Dust Cover
32	P992232	Shaft of Sanding Drum
33	P992233	Washer
34	P992234	Sanding Drum
35	P992235	Pad
36	P992236	Nut
37	P992237	Sanding Sleeve
38	P992238	Top Cap
39	PSB17M	M4 x 10 Screw
40	PW05M	M4 Washer
41	PW02M	M5 Washer
42	P992242	Needle (2)
43	P992243	Angle Block
44	P992244	Lock Pin
45	P992245	Shaft
46	P992246	Spring
47	P992247	Nut
48	P992248	Dust Collector Nozzle
49	P992249	Rubber Pad
50	PN03M	M8 Nut
51	PW01M	M8 Washer
52	PW01M	M8 Washer

REF	PART #	DESCRIPTION
53	PSW04-1	Cord Sleeve
54	PWRCRD110	Power Cord
55	P992255	Bearing 8205
56	PSB11M	M8 x 16 Screw
57	PB29M	M6 x 30 Bolt
58	P992258	Rubber Pad
59	PN01M	M6 Nut
60	P992260	Lower Beam
61	P992261	Supporting Beam
62	P992262	Upper Beam
63	P992263	Upper Beam
64	P992264	Machine Base
65	PLN01M	M4 Nut
66	PW05M	M4 Washer
67	P992267	Ground
68	PSW06	Switch
69	P992269	Label
70	PB07M	M8 x 25 Bolt
71	P992271	Oil Cap
72	P992272	Bracket
73	P992273	Lock Block
74	P992274	M6 x 10 Handle
75	PW03M	M6 Washer
76	P992276	Needle
77	P992277	Bracket
78	PB03M	M8 x 16 Bolt
79	P992279	Faceplate
80	PB06M	M8 x 12 Bolt
81	P992281	Bracket (2)
82	P992282	Angle Bracket w/ Gauge
83	P992283	Work Table
84	P992284	Table Insert
85	P992285	Angle Bracket w/o Gauge
86	P992286	Dust Cover
87	P992287	M6 x 16 Handle

# TROUBLESHOOTING

SYMPTOM	POSSIBLE CAUSE	CORRECTIVE ACTION
Motor will not start.	<ol style="list-style-type: none"> <li>1. Low voltage.</li> <li>2. Open circuit in motor or loose connections.</li> </ol>	<ol style="list-style-type: none"> <li>1. Check power line for proper voltage.</li> <li>2. Inspect all lead connections on motor for loose or open connections.</li> </ol>
Motor will not start; fuses or circuit breakers blow.	<ol style="list-style-type: none"> <li>1. Short circuit in line cord or plug.</li> <li>2. Short circuit in motor or loose connections.</li> <li>3. Incorrect fuses or circuit breakers in power line.</li> </ol>	<ol style="list-style-type: none"> <li>1. Inspect cord or plug for damaged insulation and shorted wires.</li> <li>2. Inspect all connections on motor for loose or shorted terminals or worn insulation.</li> <li>3. Install correct fuses or circuit breakers.</li> </ol>
Motor fails to develop full power (power output of motor decreases rapidly with decrease in voltage at motor terminals).	<ol style="list-style-type: none"> <li>1. Power line overloaded with lights, appliances, and other motors.</li> <li>2. Undersized wires or circuits too long.</li> <li>3. General overloading of power company facilities.</li> </ol>	<ol style="list-style-type: none"> <li>1. Reduce load on power line.</li> <li>2. Increase wire sizes or reduce length of wire.</li> <li>3. Request a power check from the power company.</li> </ol>
Motor overheats.	<ol style="list-style-type: none"> <li>1. Motor overloaded.</li> <li>2. Air circulation through the motor restricted.</li> </ol>	<ol style="list-style-type: none"> <li>1. Reduce load on motor.</li> <li>2. Clean out motor to provide normal air circulation.</li> </ol>
Motor stalls (resulting in blown fuses or tripped circuit).	<ol style="list-style-type: none"> <li>1. Short circuit in motor or loose connections.</li> <li>2. Low voltage.</li> <li>3. Incorrect fuses or circuit breakers in power line.</li> <li>4. Motor overloaded.</li> </ol>	<ol style="list-style-type: none"> <li>1. Inspect connections on motor for loose or shorted terminals or worn insulation.</li> <li>2. Correct the low voltage conditions.</li> <li>3. Install correct fuses or circuit breakers.</li> <li>4. Reduce load on motor.</li> </ol>
Machine slows down when operating.	Applying too much pressure to workpiece.	Feed workpiece slower.

# WARRANTY AND RETURNS

---

Grizzly Industrial, Inc. warrants every product it sells for a period of **1 year** to the original purchaser from the date of purchase. This warranty does not apply to defects due directly or indirectly to misuse, abuse, negligence, accidents, repairs or alterations or lack of maintenance. This is Grizzly's sole written warranty and any and all warranties that may be implied by law, including any merchantability or fitness, for any particular purpose, are hereby limited to the duration of this written warranty. We do not warrant or represent that the merchandise complies with the provisions of any law or acts unless the manufacturer so warrants. In no event shall Grizzly's liability under this warranty exceed the purchase price paid for the product and any legal actions brought against Grizzly shall be tried in the State of Washington, County of Whatcom.

We shall in no event be liable for death, injuries to persons or property or for incidental, contingent, special, or consequential damages arising from the use of our products.

To take advantage of this warranty, contact us by mail or phone and give us all the details. We will then issue you a "Return Number", which must be clearly posted on the outside as well as the inside of the carton. We will not accept any item back without this number. Proof of purchase must accompany the merchandise.

The manufacturers reserve the right to change specifications at any time because they constantly strive to achieve better quality equipment. We make every effort to ensure that our products meet high quality and durability standards and we hope you never need to use this warranty.

Please feel free to write or call us if you have any questions about the machine or the manual.

Thank you again for your business and continued support. We hope to serve you again soon.

# NOTES

---

---



# WARRANTY CARD

Name \_\_\_\_\_  
Street \_\_\_\_\_  
City \_\_\_\_\_ State \_\_\_\_\_ Zip \_\_\_\_\_  
Phone Number \_\_\_\_\_ E-Mail \_\_\_\_\_ FAX \_\_\_\_\_  
MODEL # G9922 Oscillating Spindle Sander Order # \_\_\_\_\_

The following information is given on a voluntary basis. It will be used for marketing purposes to help us develop better products and services. Of course, all information is strictly confidential.

- How did you learn about us?  
 Advertisement  Friend  
 Catalog  Card Deck  
 World Wide Web  
 Other \_\_\_\_\_
- Which of the following magazines do you subscribe to.  
 American Woodworker  Practical Homeowner  
 Cabinetmaker  Shop Notes  
 Family Handyman  Today's Homeowner  
 Fine Homebuilding  WOOD  
 Fine Woodworking  Wooden Boat  
 Home Handyman  Woodshop News  
 Journal of Light Construction  Woodsmith  
 Old House Journal  Woodwork  
 Popular Mechanics  Woodworker  
 Popular Science  Woodworker's Journal  
 Popular Woodworking  Workbench  
 Other \_\_\_\_\_
- Which of the following woodworking/remodeling shows do you watch?  
 Backyard America  The New Yankee Workshop  
 Home Time  This Old House  
 The American Woodworker  Woodwright's Shop  
 Other \_\_\_\_\_
- What is your annual household income?  
 \$20,000-\$29,999  \$60,000-\$69,999  
 \$30,000-\$39,999  \$70,000-\$79,999  
 \$40,000-\$49,999  \$80,000-\$89,999  
 \$50,000-\$59,999  \$90,000 +
- What is your age group?  
 20-29  50-59  
 30-39  60-69  
 40-49  70 +
- How long have you been a woodworker?  
 0 - 2 Years  8 - 20 Years  
 2 - 8 Years  20+ Years
- How would you rank your woodworking skills?  
 Simple  Advanced  
 Intermediate  Master Craftsman
- What stationary woodworking tools do you own? Check all that apply.  
 Air Compressor  Panel Saw  
 Band Saw  Planer  
 Drill Press  Power Feeder  
 Drum Sander  Radial Arm Saw  
 Dust Collector  Shaper  
 Horizontal Boring Machine  Spindle Sander  
 Jointer  Table Saw  
 Lathe  Vacuum Veneer Press  
 Mortiser  Wide Belt Sander  
 Other \_\_\_\_\_
- How many of your woodworking machines are Grizzly? \_\_\_\_\_
- Which benchtop tools do you own? Check all that apply.  
 1" x 42" Belt Sander  6" - 8" Grinder  
 5" - 8" Drill Press  Mini Lathe  
 8" Table Saw  10" - 12" Thickness Planer  
 8" - 10" Bandsaw  Scroll Saw  
 Disc/Belt Sander  Spindle/Belt Sander  
 Mini Jointer  
 Other \_\_\_\_\_
- How many of the machines checked above are Grizzly? \_\_\_\_\_
- Which portable/hand held power tools do you own? Check all that apply.  
 Belt Sander  Orbital Sander  
 Biscuit Joiner  Palm Sander  
 Circular Saw  Portable Planer  
 Detail Sander  Saber Saw  
 Drill/Driver  Reciprocating Saw  
 Miter Saw  Router  
 Other \_\_\_\_\_
- What machines/supplies would you like Grizzly Industrial to carry?  
 12" Table Saw  Radial Arm Saw  
 12" Jointer  Panel Saw  
 Combination Planer/Jointer  Brass Hardware  
 Paint & Finishing Supplies  Lumber  
 Contractor's Supplies  
 Other \_\_\_\_\_
- What new accessories would you like Grizzly Industrial to carry?  
 Builders Hardware  Hand Tools  
 Fasteners  Wood Components  
 Other \_\_\_\_\_
- What other companies do you purchase your tools and supplies from?  
\_\_\_\_\_  
\_\_\_\_\_
- Do you think your purchase represents good value?  
 Yes  No
- Would you recommend Grizzly Industrial to a friend?  
 Yes  No
- Would you allow us to use your name as a reference for Grizzly customers in your area? **Note: We never use names more than three times.**  
 Yes  No
- Comments: \_\_\_\_\_  
\_\_\_\_\_  
\_\_\_\_\_  
\_\_\_\_\_

FOLD ALONG DOTTED LINE

---

---

---

---

Place  
Stamp  
Here



**GRIZZLY INDUSTRIAL, INC.  
P.O. BOX 2069  
BELLINGHAM, WA 98227-2069**

---

FOLD ALONG DOTTED LINE

Send a Grizzly Catalog to a friend:

Name _____
Street _____
City _____ State _____ Zip _____

TAPE ALONG EDGES--PLEASE DO NOT STAPLE