

MERCEDES E - W212 EZS NEC GECKO FILTER INSTALLATION

NEC EZS:



REQUIRED:

GECKO CAN MODULE



FOLLOW THIS INSTRUCTION STEP BY STEP:

1. Remove the EZS module from the car and open it **VERY CAREFULLY!**
2. First **UNSOLDER 3 POINTS** shown on PHOTO1.
3. Unclip the EZS board as shown on PHOTO1.
4. **REMOVE COMPONENT** shown on PHOTO2.
! SAVE THE REMOVED COMPONENT UNTIL YOUR JOB IS COMPLETED !
5. Set GECKO FILTER buttons as shown on PHOTO3.
6. Solder GECKO FILTER cables as shown on PHOTO4.
7. Make sure that the connection you made is safe and secure.
8. Use silicone to mount GECKO on EZS's board and see PHOTO5 as an example.

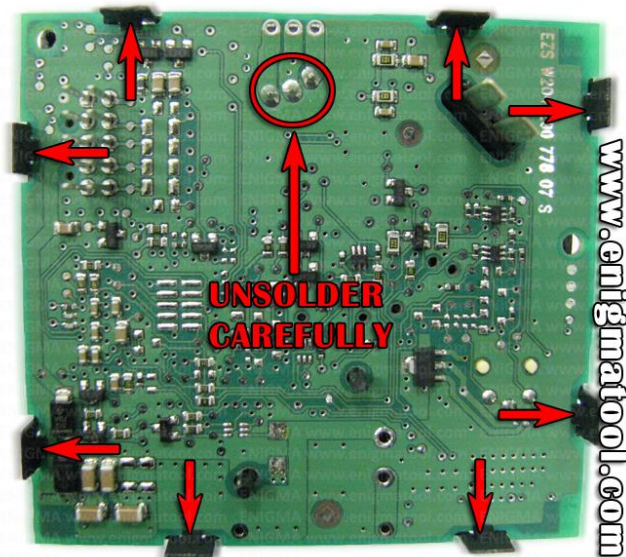


PHOTO 1: Unsolder 3 points and unclip board as indicated on the photo above.

FOR MORE INFORMATION

Call **0034 983 359 787** or visit **www.enigmatool.com**

DIAGCAR ELECTRONICS S.L. Ebanistería 1A, 47610 Zaratán, Spain

MERCEDES E - W212 EZS NEC GECKO FILTER INSTALLATION



PHOTO 2: Remove the component shown on picture above.

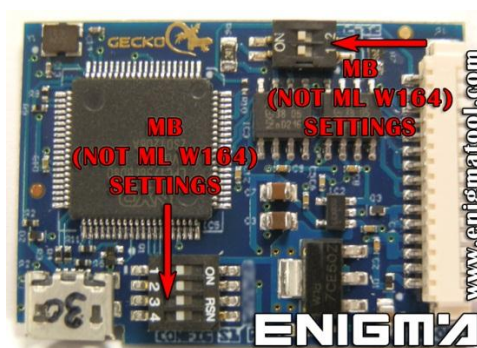


PHOTO 3: Set GECKO FILTER buttons as shown on picture above.

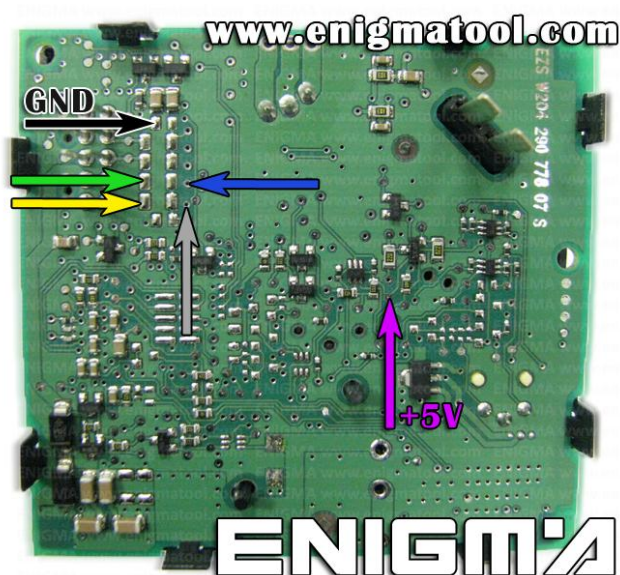


PHOTO 4: Solder GECKO cables according to colors as shown on picture above.

FOR MORE INFORMATION

Call **0034 983 359 787** or visit www.enigmatool.com

DIAGCAR ELECTRONICS S.L. Ebanistería 1A, 47610 Zaratán, Spain

MERCEDES E - W212 EZS NEC GECKO FILTER INSTALLATION

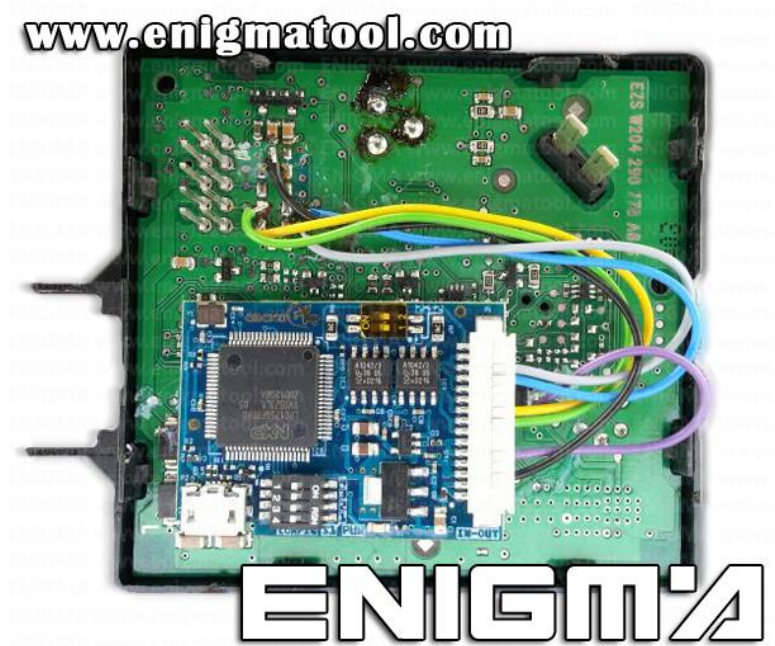


PHOTO 5: Mounting example picture.

LEGAL DISCLAIMER:

DIAGCAR ELECTRONICS S.L. does not take any legal responsibility of illegal use of any information stored in this document. Copying, distributing or taking any action in reliance with the content of this information is strictly prohibited.

FOR MORE INFORMATION

Call **0034 983 359 787** or visit www.enigmatool.com

DIAGCAR ELECTRONICS S.L. Ebanistería 1A, 47610 Zaratán, Spain