

Grizzly *Industrial, Inc.*®

DRUM/FLAP SANDER MODEL G8749 INSTRUCTION MANUAL



COPYRIGHT ©2000 BY GRIZZLY INDUSTRIAL, INC.
WARNING: NO PORTION OF THIS MANUAL MAY BE REPRODUCED IN ANY SHAPE
OR FORM WITHOUT THE WRITTEN APPROVAL OF GRIZZLY INDUSTRIAL, INC.
#321600624 APRIL, 2003 PRINTED IN TAIWAN



WARNING!

Some dust created by power sanding, sawing, grinding, drilling, and other construction activities contains chemicals known to the State of California to cause cancer, birth defects or other reproductive harm. Some examples of these chemical are:

- **Lead from lead-based paints.**
- **Crystalline silica from bricks, cement and other masonry products.**
- **Arsenic and chromium from chemically-treated lumber.**

Your risk from these exposures varies, depending on how often you do this type of work. To reduce your exposure to these chemicals: Work in a well ventilated area, and work with approved safety equipment, such as those dust masks that are specially designed to filter out microscopic particles.

TABLE OF CONTENTS

	PAGE
1. SAFETY RULES	
SAFETY INSTRUCTIONS FOR POWER TOOLS	2-3
ADDITIONAL SAFETY INSTRUCTIONS FOR THE SANDER	4
2. CIRCUIT REQUIREMENTS	
110V OPERATION	5
EXTENSION CORDS	5
GROUNDING	5
FUSING	5
3. GENERAL INFORMATION	
COMMENTARY	6
UNPACKING	7
PIECE INVENTORY	7
SITE CONSIDERATIONS	7
4. ASSEMBLY	
SECURING MOTOR TO BENCH	8
ATTACHING FLAP SANDER	8
ATTACHING SANDING DRUM	9
5. OPERATIONS	
TOGGLE SWITCH	10
DRUM SANDING	11
FLAP SANDING	11
6. MAINTENANCE	
GENERAL	12
MOUNTING SLEEVES ON DRUMS	12
REPLACING SANDPAPER FLAPS	13
7. CLOSURE	14
MACHINE DATA	15
TROUBLESHOOTING GUIDE	16
PARTS DIAGRAMS/PARTS LISTS	17-18
WARRANTY	19

SECTION 1: SAFETY

WARNING

For Your Own Safety Read Instruction Manual Before Operating This Equipment

The purpose of safety symbols is to attract your attention to possible hazardous conditions. This manual uses a series of symbols and signal words which are intended to convey the level of importance of the safety messages. The progression of symbols is described below. Remember that safety messages by themselves do not eliminate danger and are not a substitute for proper accident prevention measures.



Indicates an imminently hazardous situation which, if not avoided, WILL result in death or serious injury.



Indicates a potentially hazardous situation which, if not avoided, COULD result in death or serious injury.



Indicates a potentially hazardous situation which, if not avoided, MAY result in minor or moderate injury. It may also be used to alert against unsafe practices.



This symbol is used to alert the user to useful information about proper operation of the equipment.

WARNING

Safety Instructions For Power Tools

1. **KEEP GUARDS IN PLACE** and in working order.
2. **REMOVE ADJUSTING KEYS AND WRENCHES.** Form habit of checking to see that keys and adjusting wrenches are removed from tool before turning on.
3. **KEEP WORK AREA CLEAN.** Cluttered areas and benches invite accidents.
4. **DON'T USE IN DANGEROUS ENVIRONMENT.** Don't use power tools in damp or wet locations, or where any flammable or noxious fumes may exist. Keep work area well lighted.
5. **KEEP CHILDREN AND VISITORS AWAY.** All children and visitors should be kept a safe distance from work area.
6. **MAKE WORK SHOP CHILD PROOF** with padlocks, master switches, or by removing starter keys.
7. **DON'T FORCE TOOL.** It will do the job better and safer at the rate for which it was designed.
8. **USE RIGHT TOOL.** Don't force tool or attachment to do a job for which it was not designed.

⚠ WARNING

Safety Instructions For Power Tools

9. **USE PROPER EXTENSION CORD.** Make sure your extension cord is in good condition. Conductor size should be in accordance with the chart below. The amperage rating should be listed on the motor or tool nameplate. An undersized cord will cause a drop in line voltage resulting in loss of power and overheating. Your extension cord must also contain a ground wire and plug pin. Always repair or replace extension cords if they become damaged.

Minimum Gauge for Extension Cords

AMP RATING	LENGTH		
	25ft	50ft	100ft
0-6	16	16	16
7-10	16	16	14
11-12	16	16	14
13-16	14	12	12
17-20	12	12	10
21-30	10	10	No

10. **WEAR PROPER APPAREL.** Do not wear loose clothing, gloves, neckties, rings, bracelets, or other jewelry which may get caught in moving parts. Non-slip footwear is recommended. Wear protective hair covering to contain long hair.
11. **ALWAYS USE SAFETY GLASSES.** Also use face or dust mask if cutting operation is dusty. Everyday eyeglasses only have impact resistant lenses, they are NOT safety glasses.
12. **SECURE WORK.** Use clamps or a vise to hold work when practical. It's safer than using your hand and frees both hands to operate tool.
13. **DON'T OVERREACH.** Keep proper footing and balance at all times.
14. **MAINTAIN TOOLS WITH CARE.** Keep tools sharp and clean for best and safest performance. Follow instructions for lubricating and changing accessories.
15. **DISCONNECT TOOLS** before servicing and changing accessories, such as blades, bits, cutters, and the like.
16. **REDUCE THE RISK OF UNINTENTIONAL STARTING.** Make sure switch is in off position before plugging in.
17. **USE RECOMMENDED ACCESSORIES.** Consult the owner's manual for recommended accessories. The use of improper accessories may cause risk of injury.
18. **CHECK DAMAGED PARTS.** Before further use of the tool, a guard or other part that is damaged should be carefully checked to determine that it will operate properly and perform its intended function. Check for alignment of moving parts, binding of moving parts, breakage of parts, mounting, and any other conditions that may affect its operation. A guard or other part that is damaged should be properly repaired or replaced.
19. **NEVER LEAVE TOOL RUNNING UNATTENDED. TURN POWER OFF.** Don't leave tool until it comes to a complete stop.

WARNING

Additional Safety Instructions For The Sander

1. **BE AWARE OF DRUM OR FLAP ATTACHMENT ROTATION DIRECTION** when sanding.
2. **KEEP FINGERTIPS AWAY FROM MOVING PARTS.**
3. **NEVER USE EXCESSIVE FORCE WHEN SANDING.** Doing so greatly increases the chance of personal injury, mechanical damage, or damage to your workpiece.
4. **ALWAYS FEED YOUR WORK AGAINST THE DIRECTION OF ROTATION.**
5. **DO NOT OPERATE THE SANDER IF THE DRUM OR FLAP ATTACHMENT IS DAMAGED OR BADLY WORN.** Pieces of sandpaper could be ejected from the sander and cause injury.
6. **USE A DUST MASK OR RESPIRATOR WHEN SANDING,** even if you have a reliable method of dust collection. Use eye and hearing protection as well.
7. **DO NOT SAND MATERIAL WHEN YOU DOUBT ITS STABILITY OR INTEGRITY.** Inspect all materials carefully for foreign objects like nails and staples.
8. **WHEN DRUM SANDING, FEED MATERIAL INTO THE PORTION OF THE DRUM SPINNING DOWN.**
9. **DEVELOP GOOD HABITS IN YOUR SHOP** and safety will become second-nature to you. Habits – good and bad – are hard to break.

WARNING

Operating this equipment has the potential to propel debris into the air which can cause eye injury. Always wear safety glasses or goggles when operating equipment. Everyday glasses or reading glasses only have impact resistant lenses, they are not safety glasses. Be certain the safety glasses you wear meet the appropriate standards of the American National Standards Institute (ANSI).

WARNING

Like all power tools, there is danger associated with the Model G8749 Drum/Flap Sander. Accidents are frequently caused by lack of familiarity or failure to pay attention. Use this tool with respect and caution to lessen the possibility of operator injury. If normal safety precautions are overlooked or ignored, serious personal injury may occur.

CAUTION

No list of safety guidelines can be complete. Every shop environment is different. Always consider safety first, as it applies to your individual working conditions. Use this and other machinery with caution and respect. Failure to do so could result in serious personal injury, damage to equipment or poor work results.

SECTION 2: CIRCUIT REQUIREMENTS

110V Operation

The Model G8749 is wired for 110V, single phase operation. **Figure 1** depicts the typical grounded receptacle which should be used.

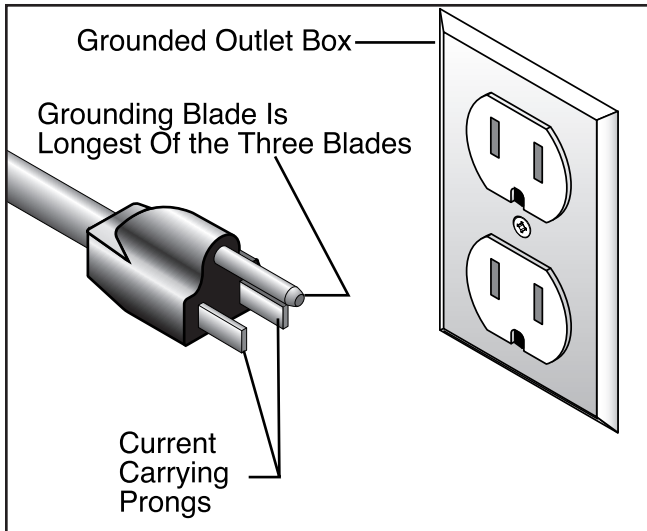


Figure 1. 110V Grounded Plug Configuration.



Grounding

In the event of an electrical short, grounding reduces the risk of electric shock by providing a path of least resistance to disperse electric current. This tool is equipped with a power cord having an equipment-grounding conductor. **See Figure 1.** The outlet must be properly installed and grounded in accordance with all local codes and ordinances.

⚠️ WARNING

This equipment must be grounded. Verify that any existing electrical outlet and circuit you intend to plug into is actually grounded. If it is not, it will be necessary to run a separate 12 A.W.G. copper grounding wire from the outlet to a known ground. Under no circumstances should the grounding pin from any three-pronged plug be removed. Serious injury may occur.



Extension Cords

If you find it necessary to use an extension cord with the Model G8749, make sure the cord is rated Hard Service (grade S) or better. Refer to the chart in the standard safety instructions to determine the minimum gauge for the extension cord. The extension cord must also contain a ground wire and plug pin. Always repair or replace extension cords when they become worn or damaged.



Fusing

The 1 HP motor will draw 10 amps at 110V. A 15-amp fuse or circuit breaker should be used when fusing this Drum/Flap Sander. Circuits rated any higher are not adequate to protect the wiring from power surges. If you operate this sander on any circuit that is already close to capacity, it might trip the breaker or blow the fuse. However, if an unusual load does not exist, and the circuit protection is still activated, you should have the circuit inspected by a qualified electrician.



SECTION 3: GENERAL INFORMATION

Commentary

Grizzly Industrial, Inc. is proud to offer the Model G8749 Drum/Flap Sander. This sander is a part of Grizzly's growing family of fine woodworking machinery. When used according to the guidelines set forth in this manual, you can expect years of trouble-free, enjoyable operation, and proof of Grizzly's commitment to customer satisfaction.

The Model G8749 features a powerful 1 HP motor with a 1725 RPM arbor speed. Supplied with the sander are two different sizes of inflatable sanding drums and a 6" diameter flap sander for irregular shapes. The unit comes prewired and ready to operate at 110V.

We are also pleased to provide this manual with the G8749. This instruction manual was written to guide you through assembly, review safety considerations, and cover general operating procedures. It represents our latest effort to produce the best documentation possible. If you have any criticisms that you feel we should pay attention to in our next printing, please write to us at the address shown to the right.

Most importantly, we stand behind our machines. We have an excellent service department at your disposal should the need arise. If you have any service questions or parts requests, please call or write to us at the location listed below.

Grizzly Industrial, Inc.
1203 Lycoming Mall Circle
Muncy, PA 17756
Phone: (570) 546-9663
Fax: (800) 438-5901
E-Mail: techsupport@grizzly.com
Web Site: www.grizzly.com

To comment on this manual write to:

Grizzly Industrial, Inc.
% Technical Documentation
P.O. Box 2069
Bellingham, WA 98227-2069

The specifications, drawings and photographs represent the G8749 as supplied when the manual was created. Due to our policy of continuous improvement, some features of this machine may vary from that portrayed in this manual.



CAUTION

To operate this, or any power tool, safely and efficiently, it is essential to become as familiar with its characteristics as possible. The time you invest before you begin to use your Model G8749 will be time well spent. **DO NOT** operate this machine until you are completely familiar with the contents of this manual. Make sure you read and understand all of the safety procedures. If you do not understand something, **DO NOT** operate the machine.

Unpacking

The Drum/Flap Sander is shipped from the factory in a carefully packed carton. If you find the machine to be damaged after you've signed for delivery and the truck and driver are already gone, you will need to file a freight claim with the carrier. Save the containers and all packing materials for inspection by the carrier or their agent. Without the packing materials, filing a freight claim can be difficult. If you need advice regarding this situation, please call us.

When you are completely satisfied with the condition of your shipment, you should inventory its parts.

NOTICE

Please keep all packaging materials until you are satisfied that the machine is in good condition. Should you need to file a freight claim, the carrier's agent will require inspection of those materials. Settling a claim can be difficult if packaging is not available.



Piece Inventory

With all the parts removed from the container, you should have the components listed below:

- Motor Assembly
- 5 $\frac{3}{4}$ " x 8" Sanding Drum and Sleeve
- 3 $\frac{1}{4}$ " x 8" Sanding Drum and Sleeve
- 6" x 10" Flap Sanding Assembly
- Mounting Shafts and Washers (3)
- End Caps (2)

If anything is missing, call or write to the Service Department listed in the General Information section. If anything is damaged, please follow the procedures described above.



Site Considerations

WORKING CLEARANCES

Working clearances can be thought of as the distances between machines and obstacles that allow safe operation of every machine without limitation. Consider existing and anticipated machine needs, size of material to be processed through each machine, and space for auxiliary stands and/or work tables. Also consider the relative position of each machine to one another for efficient material handling. Be sure to allow yourself sufficient room to safely run your machines in any foreseeable operation.

LIGHTING AND OUTLETS

Lighting should be bright enough to eliminate shadow and prevent eye strain. Electrical circuits should be dedicated or large enough to handle combined motor amp loads. Outlets should be located near each machine so power or extension cords are not obstructing high-traffic areas. Be sure to observe local electrical codes for proper installation of new lighting, outlets, or circuits.

⚠ CAUTION

Make your shop "child safe". Ensure that your workplace is inaccessible to youngsters by closing and locking all entrances when you are away. Never allow visitors in your shop when assembling, adjusting or operating equipment.



SECTION 4: ASSEMBLY

Securing Motor to Bench

The sanding motor body must be securely mounted before the machine can be safely used.

There are four $\frac{3}{8}$ " holes in the motor base which can be used to secure the machine to a tool stand or workbench. **Figure 2** shows the approximate dimensions of the hole pattern. It is best to use the actual motor base as a guide for positioning the holes.

The Sander can be temporarily mounted by using bolts with wing nuts. The Sander must be securely mounted because sanding forces can be significant and could cause the sanding machine to move.

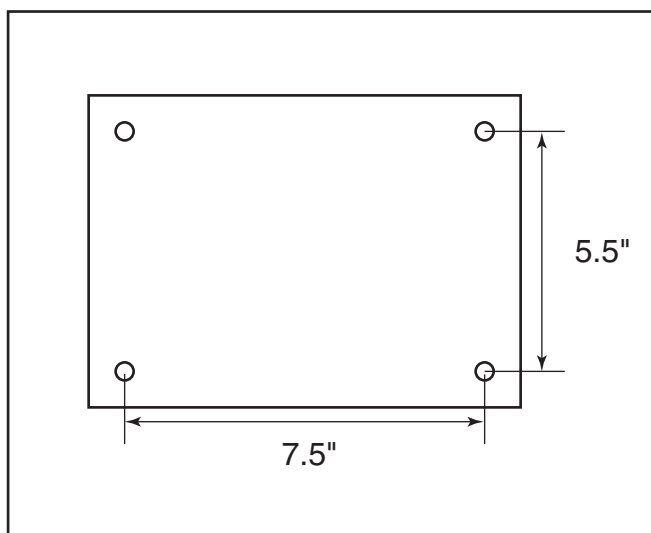


Figure 2. Dimensions of motor base hole pattern.



Attaching Flap Sander

The Flap Sander attachment is secured with a couple of ties which hold the assembly together when it is not mounted on the motor shaft. Carefully release the ties and remove them. Hold the assembly together by grasping both end plates at the same time.

The Flap Sander attachment is designed to be mounted on the left hand spindle of the motor (when facing the front of the motor, the side with the switch on it). The mounting bolt has a left handed thread on it which can only be properly installed on the left hand spindle.

The abrasive side of the sanding flaps should face the operator when mounted on the machine. Slide the assembly onto the motor spindle, then thread the bolt with the flange washer onto the end.

Figure 3 shows the proper mounting direction of the Flap Sander and the installation of the retaining nut on the end of the spindle.

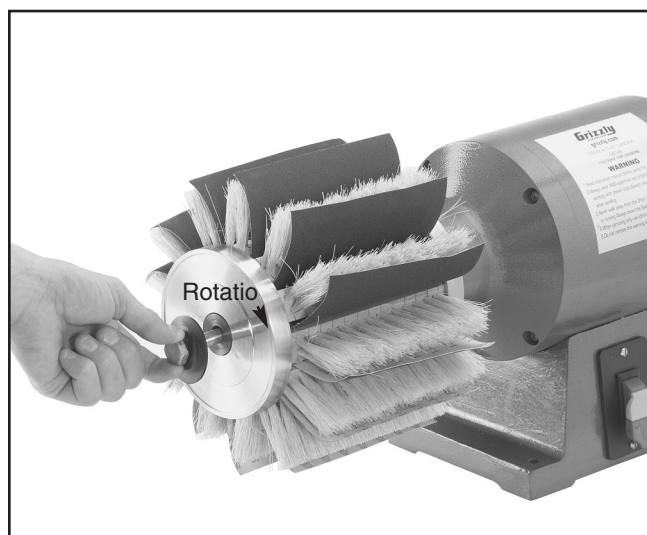


Figure 3. Attaching flap sander.



Attaching Sanding Drum

The Sanding Drums are shipped with abrasive sleeves already installed. Slide the sleeves off of the drum far enough to check to see which way the direction arrows run. **See Figure 4.** Be sure to deflate the drum completely to allow removal of the sleeve. Even with no air pressure it is a snug fit.

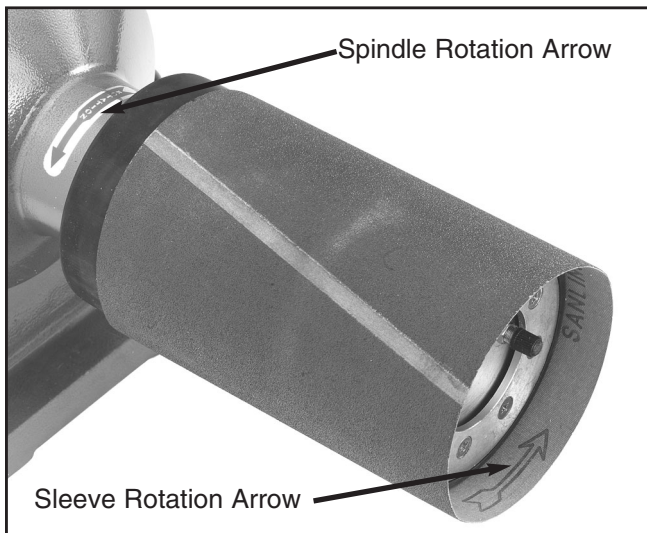


Figure 4. Rotation direction of sleeve and spindle.

It can be helpful to use a pencil or other type of temporary marker to mark the side of the drum with an arrow indicating the direction in which the sleeve is mounted. Always make certain when installing the drum/sleeve assembly that the direction of rotation of the sleeve matches the rotation of the spindle it is being mounted on.

The drum attachments are shipped with the sleeves mounted so that the large diameter drum is mounted on the right hand spindle and the smaller diameter on the left hand. These can be easily changed by sliding the sleeve off of the drum and turning it around.

The larger diameter hole of the drum goes onto the spindle first. The mounting bolt with washer goes through and threads into the spindle end. Note that the threads on the left hand spindle are LEFT HAND threads. **See Figure 5** for typical installation. Finish the installation by mounting the red end cap on the end of the bolt.

G8749 Drum/Flap Sander

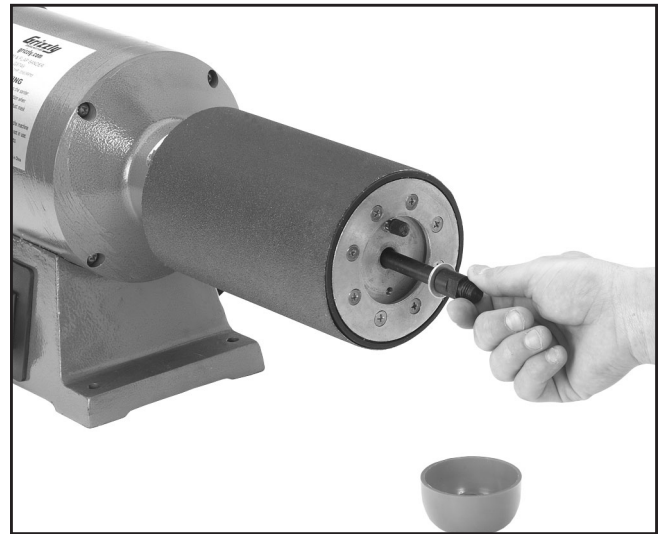


Figure 5. Attaching inflatable drum.

The Sanding Drums need to be inflated in order to retain the abrasive sleeve. It is best to inflate with a hand pump rather than an air compressor. Maximum inflation should never exceed 10 PSI. Inflate slightly less if doing a contour where a little bit of flexibility of the sleeve is required. **Figure 6** shows checking the inflation pressure with a good quality gauge.



Figure 6. Checking inflation pressure.

⚠ CAUTION

Do not use a compressor to inflate the pneumatic sanding drum. Use a hand-operated pump only and check that the inflation does not exceed 10 PSI. If over-inflated, the drum may burst with considerable force, creating the possibility of serious personal injury.



SECTION 5: OPERATIONS

The inflatable sanding drum accepts hard or soft-sanding sleeves 3¼" and 4¾" diameter by 8". These are available in a variety of grits. See the current Grizzly catalog for prices and ordering information.

Please review all safety rules for sanders and all power tools before attempting operation. The hints listed below are also worth your consideration:

1. Use great care when first engaging the workpiece against the drum or flap sander. There can be considerable force generated causing the workpiece to fly out of your hands.
2. Do not over-inflate the drums. Maximum pressure for these drums is 10 PSI.
3. Do not over-sand soft woods such as basswood or pine.
4. Choose the correct sanding grit for the job.
5. Do not use the sander as a replacement for a bandsaw or a planer. It is designed for finish work, not rough dimensioning.
6. Keep your workpiece moving across the face of the drums or flap sander to prevent grooves or ruts in the surface to be sanded.



!WARNING

Operating this equipment has the potential to propel debris into the air which can cause eye injury. Always wear safety glasses or goggles when operating equipment. Everyday glasses or reading glasses only have impact resistant lenses, they are not safety glasses. Be certain the safety glasses you wear meet the appropriate standards of the American National Standards Institute (ANSI).

Toggle Switch

This machine has a special safety ON/OFF switch with a removable locking tab. Removing the tab will prevent accidental starting of the machine. Should the locking tab be removed when the machine is running, it can still be shut off using the switch, it just will not be able to be restarted until the tab is reinserted.

Always make certain the switch is in the OFF position before connecting the machine to power. Never allow the workpiece to be touching the sanding attachments before the machine is turned ON.



Figure 7. Locking tab on power switch.



!CAUTION

Rotating sanding discs are dangerously abrasive. Use extreme caution when working near sanding surfaces. Failure to exercise care while sanding could result in severe injury.

Drum Sanding

Drum sanding is perfect for performing sanding operations on edge contours. Inflate the drum to the desired air pressure using a hand pump. Use a soft sleeve and lower pressure when sanding contours with rounded or soft edges. A hard sleeve and higher pressure is desirable when the edge is to be sharp. Be certain to mount the abrasive sleeve on the drum so the direction of rotation of the sleeve will match the spindle rotation of the machine you are using.

Figure 7 shows a typical sanding operation. Remember when sanding, the spindle is rotating towards the operator.



Figure 8. Typical drum sanding.



!WARNING

Operating this equipment has the potential to propel debris into the air which can cause eye injury. Always wear safety glasses or goggles when operating equipment. Everyday glasses or reading glasses only have impact resistant lenses, they are not safety glasses. Be certain the safety glasses you wear meet the appropriate standards of the American National Standards Institute (ANSI).

Flap Sanding

Flap sanding is useful for sanding rounded or spherical shapes. With the flap sander mounted on the left hand spindle, the abrasive side of the individual sanding flaps will be rotating toward the operator. It is generally best to introduce the workpiece to the downward side of that rotation for the best control of the sanding forces. **Figure 9** shows a typical sanding operation.

The flap sander is supplied with 120 grit paper installed. The abrasive sheets can be replaced with different grits if needed. See the Maintenance section for detail on replacing the sandpaper.



Figure 9. Typical flap sanding.



!WARNING

DO NOT attempt to operate this machine before completing the assembly and adjustment instructions. Be sure that the switch is off and the cord is disconnected from the power source at all times until assembly and adjustment are complete and you have reviewed all safety guidelines. Serious injury could occur.

SECTION 6: MAINTENANCE

General

The Flap/Drum Sander is ruggedly constructed to provide years of dependable service. To ensure that you enjoy maximum performance and longevity, we suggest the following routine maintenance:

1. Check all fasteners for tightness before each use. Tighten when necessary.
2. Keep the Sander clean for maximum efficiency and heat dissipation. Wipe away accumulated sanding dust and grime after each use.
3. Inspect sanding sleeves for excessive wear and damage. Replace if necessary.
4. Inspect the switch and cord periodically for wear or damage. Replace if necessary.
5. Bearings are sealed and permanently lubricated, so no further lubrication is needed. Check for wear periodically and replace when worn. Increased motor noise and vibration are both indicators of bearing wear.



⚠️ WARNING

DO NOT make adjustments or attempt any maintenance procedures while this machine is running. Ensure that the switch is off, power is disconnected and all moving parts have stopped before making adjustments. Failure to do so could result in serious operator injury.

Mounting Sleeves on Drums

The Sander is supplied with two different sizes of inflatable drums, one 4 $\frac{3}{4}$ " in diameter, the other 3 $\frac{1}{2}$ " in diameter. To remove the sleeve, first deflate the rubber drum by pressing on the plunger in the center of the air valve with a nail or paper clip. With a bit of coaxing the abrasive sleeve should come loose. **See Figure 10.**

After selecting the desired grit and backing type (hard or soft), check the inside diameter of the sleeve for the direction arrows. Determine which spindle, left or right, you intend to install the drum assembly onto. Make certain the rotation of the abrasive sleeve agrees with the direction of rotation of the spindle. Remember the air valve will always be facing away from the machine when the drum is installed.

Now inflate the drum by attaching a hand pump (e.g. as bicycle tire pump) to the valve and inflating to a maximum of 10 PSI. Pressure any higher can result in damage to the drum's seals. Install the drum onto the motor spindle.



Figure 10. Installing sanding sleeve.



Replacing Sandpaper Flaps

Remove the Flap Sander from the machine. Set the assembly down on a bench or table top and then remove the top plate. It will be easier to reassemble the brushes and sandpaper if they are not all removed from the lower plate at the same time. Note that each retaining strip holds two pieces of the 114mm x 152mm (4.5" x 6.0") sandpaper. Select the proper replacement grit and cut to size.

Loosen the two screws holding the retainer plate and remove the old sandpaper. Position the end of two sheets of the replacement sandpaper underneath the same retainer. It will be necessary to remove one or more of the brushes to gain access to the screws holding the retainer. Make sure the orientation of the sandpaper is the same as for the sheets you are removing.

After replacing all of the sandpaper, and inserting the brushes back into the lower plate so that there is one brush between each sheet of sandpaper, carefully reinstall the top plate. It will be necessary to position the brushes so they align with the spaces in the top plate. Get a few started, then move around the circle to get more of the brushes positioned in the top plate.

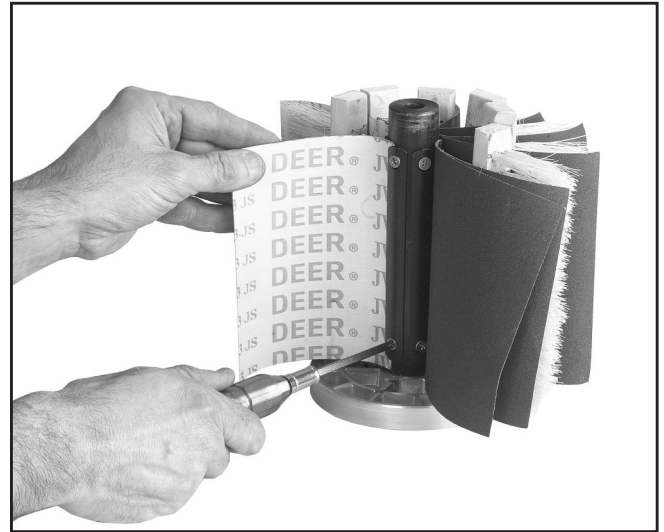


Figure 11. Detail of sanding flap attachment.



SECTION 7: CLOSURE

The following pages contain general machine data, part diagrams/lists, troubleshooting guide and Warranty/Return information for your Model G8749 Drum/Flap Sander.

If you need parts or help in assembling your machine, or if you need operational information, we encourage you to call our Service Department. Our trained service technicians will be glad to help you.

If you have comments dealing specifically with this manual, please write to our Bellingham, Washington location using the address in Section 3: General Information. The specifications, drawings, and photographs illustrated in this manual represent the Model G8749 as supplied when the manual was prepared. However, due to Grizzly's policy of continuous improvement, changes may be made at any time with no obligation on the part of Grizzly. Whenever possible, though, we send manual updates to all owners of a particular tool or machine. Should you receive one, add the new information to this manual and keep it for reference.

We have included some important safety measures that are essential to this machine's operation. While most safety measures are generally universal, Grizzly reminds you that each workshop is different and safety rules should be considered as they apply to your specific situation.

We recommend you keep a copy of our current catalog for complete information regarding Grizzly's warranty and return policy. If you need additional technical information relating to this machine, or if you need general assistance or replacement parts, please contact the Service Department listed in Section 3: General Information.

Additional information sources are necessary to realize the full potential of this machine. Trade journals, woodworking magazines, and your local library are good places to start.

WARNING

The Model G8749 was specifically designed for sanding. **DO NOT MODIFY AND/OR USE THIS MACHINE FOR ANY OTHER PURPOSE.** Modifications or improper use of this tool will void the warranty. If you are confused about any aspect of this machine, **DO NOT** use it until you have answered all your questions. Serious personal injury may occur.

WARNING

Like all power tools, there is danger associated with this machine. Accidents are frequently caused by lack of familiarity or failure to pay attention. Use this tool with respect and caution to lessen the possibility of operator injury. If normal safety precautions are overlooked or ignored, serious personal injury may occur.





MACHINE DATA SHEET

Customer Service #: (570) 326-3806 • To Order Call: (800) 523-4777 • Fax #: (800) 438-5901

GRIZZLY MODEL G8749 DRUM / FLAP SANDER

Design Type Bench Model

Overall Dimensions:

Height 10½"
 Width 30" with Drums Attached
 Depth 7½"
 Weight (Net) 57 lbs.
 Weight (Shipping) 70 lbs.
 Box Size 31½" x 9¼" x 14¾"
 Footprint 9" x 6½"

Shaft:

Main 22mm x 3⅛"
 Total Length Each 8"

Motor:

Type TEFC Capacitor Start Induction
 Horsepower 1 HP
 Phase / Hertz Single Phase/ 60Hz
 Voltage 110V
 Amps 10
 RPM 1725
 Bearings Shielded and Lubricated Ball Bearings
 Switch Toggle Switch w/ Safety Tab

Features:

..... Includes:
 1 - 4¾" x 8" Sanding Drum (80 grit)
 1 - 3¼" x 8" Sanding Drum (80 grit)
 1 - 6" x 10" Flap Sander (120 grit)

Specifications, while deemed accurate, are not guaranteed.

REVISED 08/00

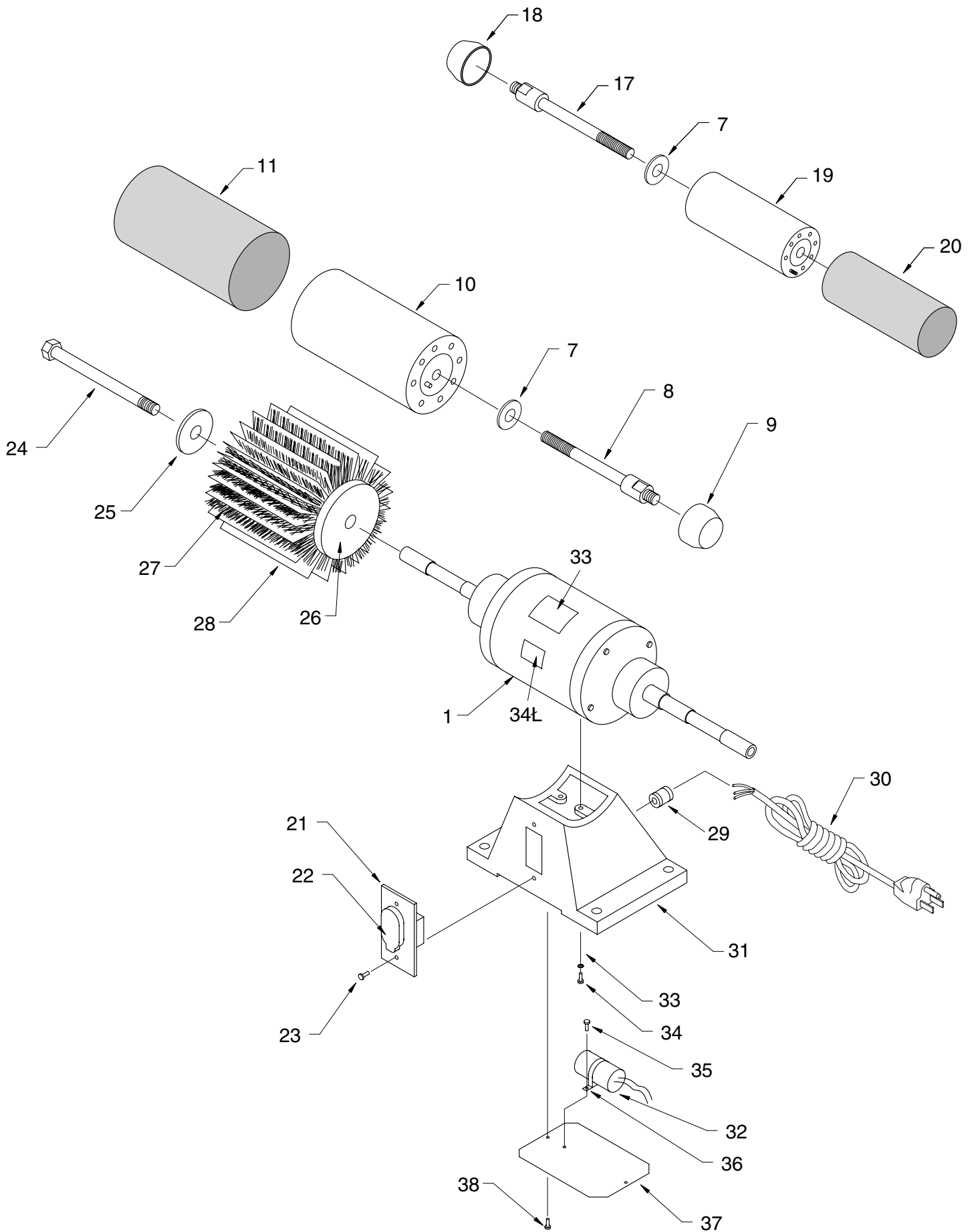
TROUBLESHOOTING

SYMPTOM	POSSIBLE CAUSE	CORRECTIVE ACTION
Motor will not start.	<ol style="list-style-type: none"> 1. Low voltage. 2. Open circuit in motor or loose connections. 	<ol style="list-style-type: none"> 1. Check power line for proper voltage. 2. Inspect all lead connections on motor for loose or open connections.
Motor will not start; fuses or circuit breakers blow.	<ol style="list-style-type: none"> 1. Short circuit in line cord or plug. 2. Short circuit in motor or loose connections. 3. Incorrect fuses or circuit breakers in power line. 	<ol style="list-style-type: none"> 1. Inspect cord or plug for damaged insulation and shorted wires. 2. Inspect all connections on motor for loose or shorted terminals or worn insulation. 3. Install correct fuses or circuit breakers.
Motor fails to develop full power (power output of motor decreases rapidly with decrease in voltage at motor terminals).	<ol style="list-style-type: none"> 1. Power line overloaded with lights, appliances, and other motors. 2. Undersized wires or circuits too long. 3. General overloading of power company facilities. 	<ol style="list-style-type: none"> 1. Reduce load on power line. 2. Increase wire sizes or reduce length of wire. 3. Request a power check from the power company.
Motor overheats.	<ol style="list-style-type: none"> 1. Motor overloaded. 2. Air circulation through the motor restricted. 	<ol style="list-style-type: none"> 1. Reduce load on motor. 2. Clean out motor to provide normal air circulation.
Motor stalls (resulting in blown fuses or tripped circuit).	<ol style="list-style-type: none"> 1. Short circuit in motor or loose connections. 2. Low voltage. 3. Incorrect fuses or circuit breakers in power line. 4. Motor overloaded. 	<ol style="list-style-type: none"> 1. Inspect connections on motor for loose or shorted terminals or worn insulation. 2. Correct the low voltage conditions. 3. Install correct fuses or circuit breakers. 4. Reduce load on motor.
Machine slows down when operating.	<ol style="list-style-type: none"> 1. Applying too much pressure to workpiece. 	Feed workpiece slower.
Sanded surface has grooves or scratches.	<ol style="list-style-type: none"> 1. Sanding sleeve has a tear or something is embedded in the surface of the sleeve. 2. Workpiece is not being moved across the flap or drum surface. 	<ol style="list-style-type: none"> 1. Replace sanding sleeve. 2. Gently sweep the workpiece from right to left over the surface of the drum or flap attachment.



NOTES





G8749 DISC SANDER PARTS LIST

REF#	PART#	DESCRIPTION
001	P8749001	MOTOR ASSEMBLY
002	P8749002	PIN
003	P8749003	FLAT HEAD SCREW M6 X 15
004	P8749004	LARGE RING
005	P8749005	LARGE SANDING DRUM
006	P8749006	FLAT HEAD SCREW M6 X 16
007	P8749007	WASHER 7 MM
008	P8749008	DRUM MOUNTING BOLT RH
009	P8749009	SAFETY COVER RH
010	P8749010	LARGE RUBBER DRUM
011	G9209*	LARGE SANDING SLEEVE
012	P8749012	AIR VALVE
013	P8749013	VALVE CAP
014	P8749014	SMALL RING INNER
015	P8749015	SMALL SANDING DRUM
016	P8749016	SMALL RING OUTER
017	P8749017	DRUM MOUNTING BOLT LH
018	P8749018	SAFETY COVER LEFT HAND
019	P8749019	SMALL RUBBER DRUM
020	G9197*	SMALL SANDING SLEEVE

REF#	PART#	DESCRIPTION
021	P8749021	SWITCH MOUNTING PLATE
022	P8749022	SWITCH
023	P8749023	SLOTTED SCREW M5 X 8
024	P8749024	HEX BOLT M10-1.75 x 134
025	P8793025	FLANGE WASHER
026	P8749026	CONTAINMENT RING
027	P8749027	BRUSH
028	P8749028	SANDPAPER 114 X 152MM
029	P8749029	STRAIN RELIEF
030	PWRCRD110L	POWER CORD 110V, LONG W/PLUG
031	P8749031	STAND
032	P8749032	STARTING CAPACITOR
033	P8749033	WARNING LABEL
034	P8749034	MACHINE ID LABEL
035	PS07M	PHLP HD SCR M4-.7 X 14
036	P8749036	CAPACITOR BRACKET
037	P8749037	COVER PLATE
038	PS07M	PHLP HD SCR M4-.7 X 8
039	PW01M	FLAT WASHER 8MM
040	PB26M	HEX BOLT M8-1.25 X 30

*See the current Grizzly Catalog for a complete selection of sanding sleeves to fit this machine.

WARRANTY AND RETURNS

Grizzly Industrial, Inc. warrants every product it sells for a period of **1 year** to the original purchaser from the date of purchase. This warranty does not apply to defects due directly or indirectly to misuse, abuse, negligence, accidents, repairs or alterations or lack of maintenance. This is Grizzly's sole written warranty and any and all warranties that may be implied by law, including any merchantability or fitness, for any particular purpose, are hereby limited to the duration of this written warranty. We do not warrant or represent that the merchandise complies with the provisions of any law or acts unless the manufacturer so warrants. In no event shall Grizzly's liability under this warranty exceed the purchase price paid for the product and any legal actions brought against Grizzly shall be tried in the State of Washington, County of Whatcom.

We shall in no event be liable for death, injuries to persons or property or for incidental, contingent, special, or consequential damages arising from the use of our products.

To take advantage of this warranty, contact us by mail or phone and give us all the details. We will then issue you a "Return Number", which must be clearly posted on the outside as well as the inside of the carton. We will not accept any item back without this number. Proof of purchase must accompany the merchandise.

The manufacturers reserve the right to change specifications at any time because they constantly strive to achieve better quality equipment. We make every effort to ensure that our products meet high quality and durability standards and we hope you never need to use this warranty.

Please feel free to write or call us if you have any questions about the machine or the manual.

Thank you again for your business and continued support. We hope to serve you again soon.

WARRANTY CARD

Name _____
Street _____
City _____ State _____ Zip _____
Phone Number _____ E-Mail _____ FAX _____
MODEL # G8749 Drum/FlapSander Order # _____

The following information is given on a voluntary basis. It will be used for marketing purposes to help us develop better products and services. Of course, all information is strictly confidential.

1. How did you learn about us?

Advertisement Friend
 Catalog Card Deck
 World Wide Web

 Other _____

2. Which of the following magazines do you subscribe to.

American Woodworker Practical Homeowner
 Cabinetmaker Shop Notes
 Family Handyman Today's Homeowner
 Fine Homebuilding WOOD
 Fine Woodworking Wooden Boat
 Home Handyman Woodshop News
 Journal of Light Construction Woodsmith
 Old House Journal Woodwork
 Popular Mechanics Woodworker
 Popular Science Woodworker's Journal
 Popular Woodworking Workbench

 Other _____

3. Which of the following woodworking/remodeling shows do you watch?

Backyard America The New Yankee Workshop
 Home Time This Old House
 The American Woodworker Woodwright's Shop

 Other _____

4. What is your annual household income?

\$20,000-\$29,999 \$60,000-\$69,999
 \$30,000-\$39,999 \$70,000-\$79,999
 \$40,000-\$49,999 \$80,000-\$89,999
 \$50,000-\$59,999 \$90,000 +

5. What is your age group?

20-29 50-59
 30-39 60-69
 40-49 70 +

6. How long have you been a woodworker?

0 - 2 Years 8 - 20 Years
 2 - 8 Years 20+ Years

7. How would you rank your woodworking skills?

Simple Advanced
 Intermediate Master Craftsman

8. What stationary woodworking tools do you own? Check all that apply.

Air Compressor Panel Saw
 Band Saw Planer
 Drill Press Power Feeder
 Drum Sander Radial Arm Saw
 Dust Collector Shaper
 Horizontal Boring Machine Spindle Sander
 Jointer Table Saw
 Lathe Vacuum Veneer Press
 Mortiser Wide Belt Sander

 Other _____

9. How many of your woodworking machines are Grizzly? _____

10. Which benchtop tools do you own? Check all that apply.

1" x 42" Belt Sander 6" - 8" Grinder
 5" - 8" Drill Press Mini Lathe
 8" Table Saw 10" - 12" Thickness Planer
 8" - 10" Bandsaw Scroll Saw
 Disc/Belt Sander Spindle/Belt Sander
 Mini Jointer

 Other _____

11. How many of the machines checked above are Grizzly? _____

12. Which portable/hand held power tools do you own? Check all that apply.

Belt Sander Orbital Sander
 Biscuit Joiner Palm Sander
 Circular Saw Portable Planer
 Detail Sander Saber Saw
 Drill/Driver Reciprocating Saw
 Miter Saw Router

 Other _____

13. What machines/supplies would you like Grizzly Industrial to carry?

12" Table Saw Radial Arm Saw
 12" Jointer Panel Saw
 Combination Planer/Jointer Brass Hardware
 Paint & Finishing Supplies Lumber
 Contractor's Supplies

 Other _____

14. What new accessories would you like Grizzly Industrial to carry?

Builders Hardware Hand Tools
 Fasteners Wood Components

 Other _____

15. What other companies do you purchase your tools and supplies from?

16. Do you think your purchase represents good value?

Yes No

17. Would you recommend Grizzly Industrial to a friend?

Yes No

18. Would you allow us to use your name as a reference for Grizzly customers in your area? Note: We never use names more than three times.

Yes No

19. Comments: _____

CUT ALONG DOTTED LINE

G8749 Drum/Flap Sander

FOLD ALONG DOTTED LINE



GRIZZLY INDUSTRIAL, INC.
P.O. BOX 2069
BELLINGHAM, WA 98227-2069



FOLD ALONG DOTTED LINE

Send a Grizzly Catalog to a friend:

Name _____
Street _____
City _____ State _____ Zip _____

TAPE ALONG EDGES--PLEASE DO NOT STAPLE