



User's Manual of Web monitor HMI-901



Version: UM02EN-140306

1. Installation

Web monitorHMI-901 should be installed at least 20cm away from the inverter, or the signal will decrease. Screw the monitor back or stick with adhesive.

2. Wiring

2.1 Start wiring

- 1) Disconnect the inverter from both AC and DC supplies
- 2) Loosen the screws and Open the waterproof cover
(picture 2-1 and 2-2)



2-1

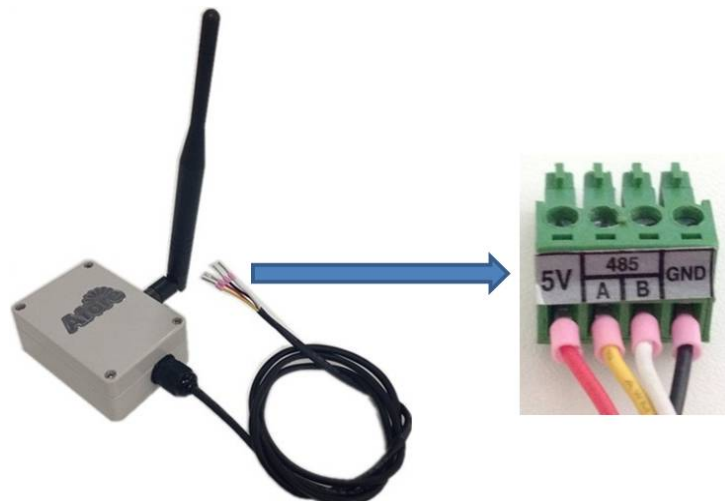


2-2

- 3) Put the communication wire through the waterproof connector.(picture 2-4)
- 4) Connect the wires one by one according to the wire colors and the definition chart, and ensure that all terminals are tight and sound. (picture 2-4)

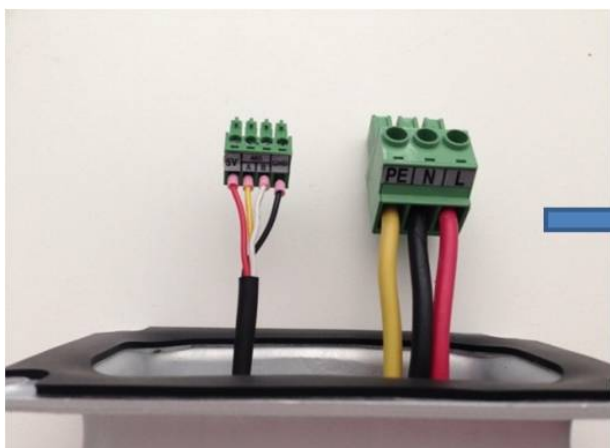
**Definition of different wire (picture2-3):*

Colour	Red	Yellow	White	Black
Definition	+5V	485A	485B	GND

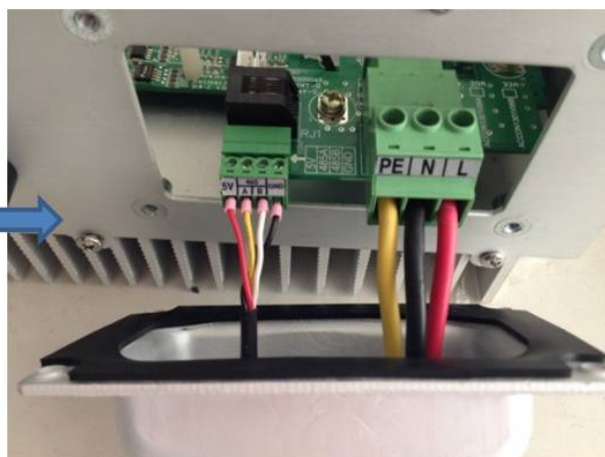


2-3

- 5) Plug in the Green communication socket back into the inverter. (picture 2-5)



2-4



2-5

6) Close the waterproof cover, tighten the screws and the waterproof connector.(Picture 2-6)



2-6

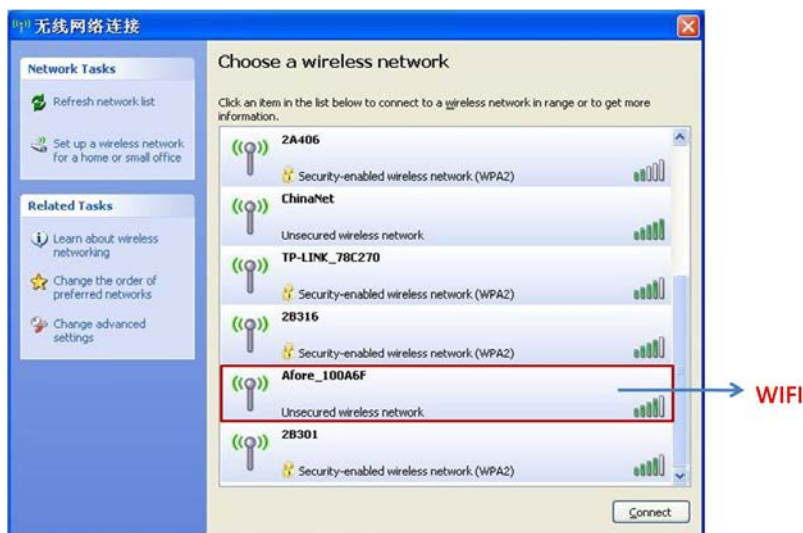
Notice: Please do not mistakenly connect the red and black wire in the communication port, otherwise the monitoring module might be damaged.

3 Wireless portal configuration

3.1 Make sure the inverter is up and running and generating before configuration.

3.2 Using a laptop, cell phone or tablet PC, open the WIFI/WLAN interface on your device to search for the WIFI signal of the monitor, (your laptop or your cell phone might be already connected with your existing home/office wifi signal, please disconnect with it first if there is any), the WIFI signal name will be like "Afore_xxxxxx", Picture 3-1)

3.3 Notice: No password is needed to connect to the Afore network.



3-1

3.4 Connect to the Afore_xxxxxx WIFI signal

3.5 Open up the internet browser on your device and locate the address bar

3.6 In the address bar, type 11.11.11.1 and press enter. This will bring up a new

interface (Picture3-2),

3.7 Both the user's name and password are "admin"



3-2

3.4 Click "confirm/OK " and move into next interface, copy and paste the Serial number "65.....c8" and save it in a file or write down in the box below, this number will be useful when registering the monitor the Afore website later. (Picture 3-3)

Note: This SN number here is the web monitor's serial number, has nothing to do with the inverter SN number.

3-3

3.5 Click Find AP,

3.6 Open the Scan interface, and it will automatically search for all wireless routers in the surrounding area.

3.7 Select your home or office Network and connect.

3.8 In the next interface (Picture 3-3), input the password to your existing router in the Key column (Picture 3-3). Please make sure the signal strength is at least 30% (Picture 3-4), otherwise the communication will be affected.

SSID	Signal
JECT3012	58%

[Return](#) [Refresh](#)

3-4

- 3.9 Click "Save and reboot "to save this configuration.
- 3.10 Wait for 5 seconds to complete the process.
- 3.11 Either press refresh or 'F5' to reload the page.
- 3.12 Move onto the account register section.

IP Address Setting	
Current Local IP:	192.168.1.100
Current Netmask:	255.255.255.0
Current Gateway IP:	192.168.1.1
Current DNS Server:	192.168.1.1
DHCP Select:	<input type="button" value="Enable"/>
Set Local IP:	<input type="text" value="192.168.1.1"/>
Set Netmask:	<input type="text" value="255.255.255.0"/>
Set Gateway IP:	<input type="text" value="192.168.1.1"/>
Set DNS Server:	<input type="text"/>

[Return](#) [Save](#)

Picture3-5

- 3.13 If Current Local IP; Current Netmask; Current Gateway IP; Current DNS Server all displays specific data rather than "0", it means the monitor device has successfully obtained an IP address and can work normally.
- 3.14 If the interface shows as Picture 3-6, it means the monitor device failed to connect with the router or the internet connection is not normal. When this happens, user should check if the password of the router is correct or if the wifi signal is too weak.

Afore Professional Solar PV Inverter Manufacture	
Return	IP Address Setting
Current Local IP:	0.0.0.0
Current Netmask:	0.0.0.0
Current Gateway IP:	0.0.0.0
Current DNS Server:	0.0.0.0
DHCP Select:	Enable ▾
Set Local IP:	<input type="text" value="192.168.1.1"/>
Set Netmask:	<input type="text" value="255.255.255.0"/>
Set Gateway IP:	<input type="text" value="192.168.1.1"/>
Set DNS Server:	<input type="text"/>
<input type="button" value="Save"/>	

Picture 3-6

It is also possible that the user's router has got a Static ip address,

The user can use the similar method to set up by clicking "IP Address", enter the IP address setting interface. Close DHCP Select by choosing Disable, then input the Static IP address, net mask, gateway ip and DNS. Then Save the settings.

Wait for 2 minutes and retype 11.11.11.1 in the web browser and enter, then click IP Address and check. If Current Local IP; Current Netmask; Current Gateway IP; Current DNS Server all displays specific data rather than "0", means the setting is successful.

If not, please confirm if the router allows wireless device to be connected. **(This check function haven't been implemented for the current stock before 23rd April.**

If the router needs MAC address, please get it from the previous copying SN step.

4 Account register

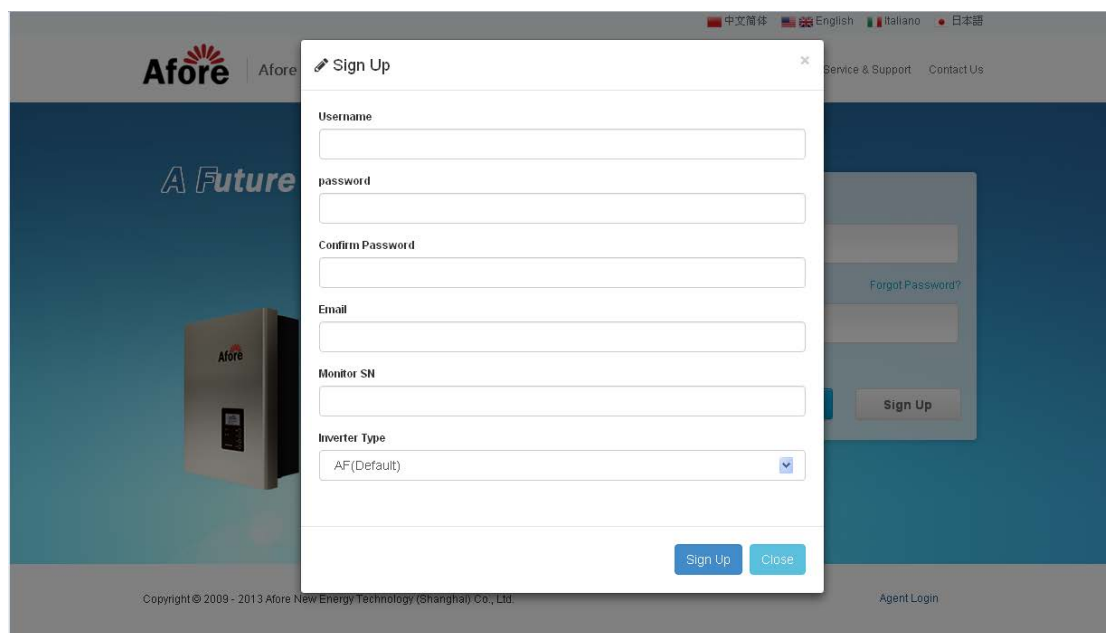
4.1 Using your laptop or PC, disconnect from "Afore_XXXX" wifi and connect onto your home/office wifi network.

4.2 Visit <http://www.aforeenergy.com/> website and Click "Register" button on the Monitoring System User Login.

4.3 This will bring up the "Afore Energy Remote Monitoring" log in interface(Picture 4-1),

4.4 Select your desired language in the bottom right corner, click "Sign up"

4.5 Then interface like Picture 4-2 shows. Input user's name, password, register email address and the SN number which had been saved in Chapter 3.3, click sign up to confirm and complete the registration.



4-1

4-2

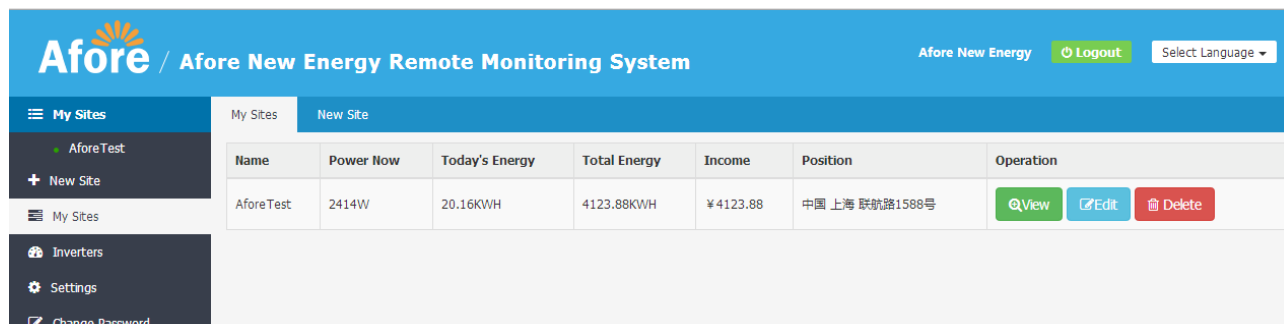
4.6 After registration is completed,

4.7 Login with YOUR user name and password, select your own language in the upper right corner if necessary. This setting will be saved to this account number, when you log in next time, you wont need to set this up again.

5 User's instructions

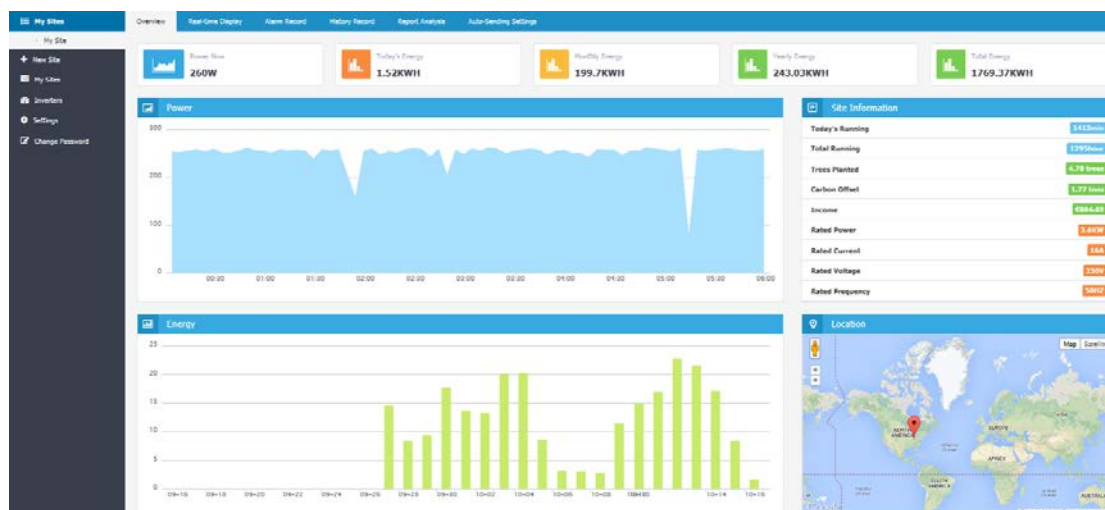
5.1 Log in

Log into the monitoring system with your registered user's name and password, the system will automatically generate a PV system monitoring site, called "my sites" (Picture 5-1)



5-1

Click "view", to view the PV system's operational data which will now be displayed. (Picture 5-2)



5-2

5.2 Edit, add sites and add inverters by users

In Afore Energy Remote Monitoring System, users not only can view their own sites, but can also edit.

Click "Edit", move to the interface shown as Picture 5-3, users could edit content such as PV system name, location, local feed-in tariff, PV system introduction, and can also select PV system location on the map.

5-3

The “Sort No” in the bottom shows the current PV systems position sequence, the smaller number rank higher position of the list. Input the relevant information and save the settings to complete the PV system new site adding.

If users need to monitor more than one PV system, click “+New site” the similar interface of editing site shows, also type in name, location information etc. The only difference is users need to input the SN number of the inverter installed in this PV system (Picture 5-4)

5-4

If users need to add more than one inverter in the monitoring system, click “Inverters” in the left column, interface shown as Picture 5-5. Users could edit current inverter or add new inverters with similar steps. Here we will introduce “Add New Inverter” as an example

Inverters Add New Inverter						
Site Name:AforeTest						
SN	Name	Rated Power	Rated Current	Rated Voltage	Rated Frequency	Operation
33643e0bf0ef42dfbde66a9a98885e15	Afore-Inverter1	3.6KW	16A	230V	50HZ	Edit Delete
c6084b9b085b4a0e91b03aa8d12a7df3	test2-Inverter2	2KW	9A	230V	50HZ	Edit Delete

5-5

Click “Add New Inverter”, type in relevant information and click “save to” complete the adding. (Picture 5-6)

My Sites	Inverters	Add New Inverter
<ul style="list-style-type: none"> AforeTest + New Site My Sites Inverters Settings Change Password 	Inverter Name: <input type="text" value="AforeTest"/>	
	SN: <input type="text"/>	
	Name: <input type="text"/>	
	Rated Power: <input type="text"/> KW	
	Rated Current: <input type="text"/> A	
	Rated Voltage: <input type="text"/> V	
	Rated Frequency: <input type="text"/> HZ	
	Remark: <input type="text"/>	
	Sort No.: <input type="text"/>	
		<input type="button" value="Save"/> <input type="button" value="Cancel"/>

5-6

5.3 User's information setting

For Users to edit their own account information, click “Settings” in the left column (Picture 5-7)。

My Sites	Settings
<ul style="list-style-type: none"> AforeTest + New Site My Sites Inverters Settings Change Password 	Username: afore
	Fullname: <input type="text" value="Afore New Energy"/>
	Telephone: <input type="text"/>
	Email: <input type="text"/>
	Address: <input type="text"/>
	Remark: <input type="text"/>
	<input type="button" value="Save"/> <input type="button" value="Reset"/>

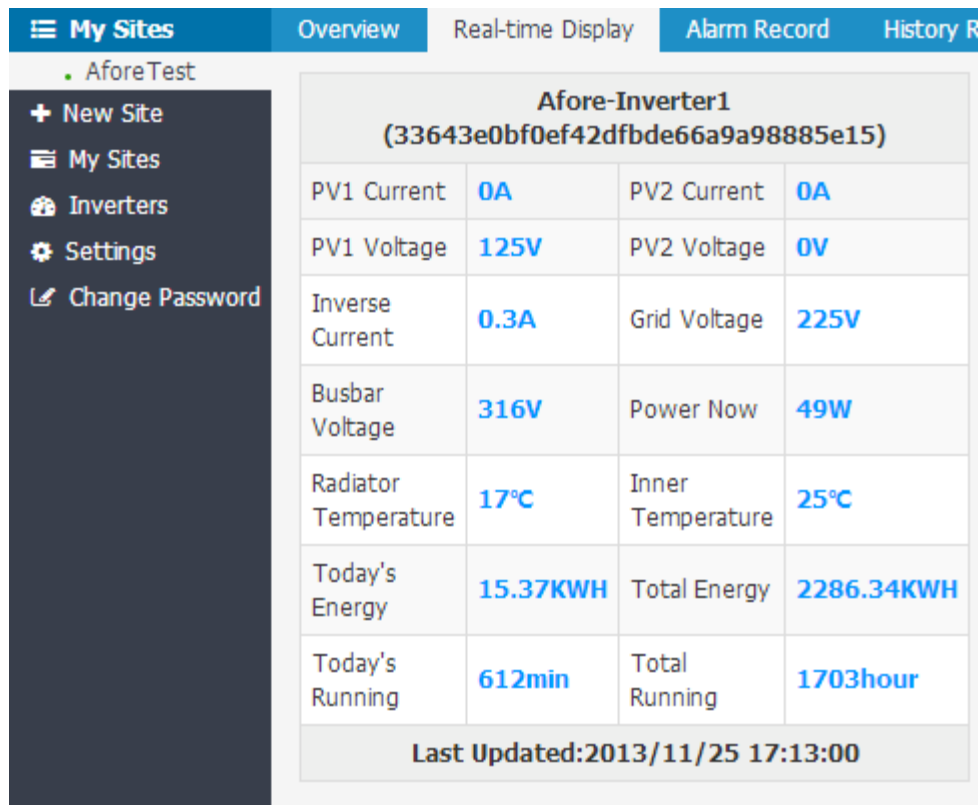
5-7

5.4 PV system management

Afore Energy Remote Monitoring System provides abundant functions of PV system monitoring and management.

5.4.1 Real-time Display

Real-time display provides users with basic real-time working data information of the PV system, and enable the users to quickly view their own PV systems working status. Select a site, click “view”, and choose “Real-time display”(Picture 5-8)



5-8

5.4.2 Alarm Record

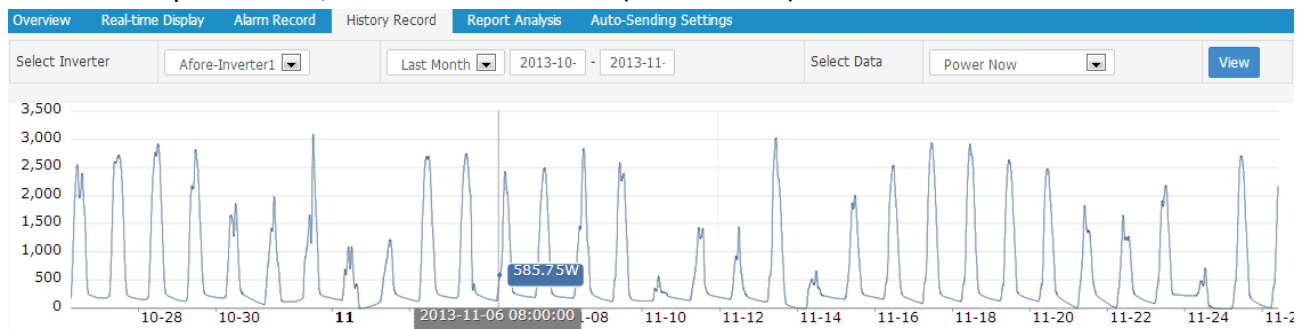
In the Alarm Record page, users could check the relevant event list for each individual inverter, with additional info regarding fault codes and the time that the fault occurred. (Picture 5-9)

Overview Real-time Display Alarm Record History Record Report Analysis Auto-Sending Settings				
Select Inverter	Afore-Inverter1	Today	2012-11- - 2013-11-	View
Error Code	Error Type	Error Message	Rtc Time	Operation
01	Type23	AC Over Current	2013/8/12 11:08:55	View Detail

5-9

5.4.3 History Record

In History Record page, users could check the curves of historical data and could also check the specified time period of certain operation parameters, such as "Power now" (Picture 5-10)



5-10

5.4.4 Report Analysis

In the Report Analysis page, users could check the PV system daily, monthly, and yearly report.

Overview Real-time Display Alarm Record History Record Report Analysis Auto-Sending Settings			
Report Type	<input type="radio"/> Daily Report <input checked="" type="radio"/> Monthly Report <input type="radio"/> Yearly Report	Select Time	2013-: <input type="button" value="View"/> <input type="button" value="Export"/>
Date		Energy	
2013-11-01		22.33KWH	
2013-11-02		9.14KWH	
2013-11-03		9.69KWH	
2013-11-04		27.22KWH	
2013-11-05		25.55KWH	

5-11

5.4.5 Auto-sending Settings

In this page, users could set faulty report automatic sending by day, week and month. See Picture 5-12, select the “on” option of the specific report.

Please use HELP@AFOREUK.COM for the alarm notification

only.....

then Save the settings, this will allow any faults that occur to be monitored and resolved by Afore.

My Sites		Overview	Real-time Display	Alarm Record	History Record	Report Analysis	Auto-Sending Settings
AforeTest							
<div> <div> <div>+</div> <div>New Site</div> </div> <div> <div>≡</div> <div>My Sites</div> </div> <div> <div>⚙</div> <div>Inverters</div> </div> <div> <div>⚙</div> <div>Settings</div> </div> <div> <div>🔑</div> <div>Change Password</div> </div> </div>							
Afore-Inverter1 (33643e0bf0ef42dfbde66a9a98885e15)							
Alarm Notification	<input checked="" type="checkbox"/>	On	user@email.com				
Daily Report	<input type="checkbox"/>	On					
Weekly Report	<input type="checkbox"/>	On					
Monthly Report	<input type="checkbox"/>	On					
test2-Inverter2 (c6084b9b085b4a0e91b03aa8d12a7df3)							
Alarm Notification	<input type="checkbox"/>	On					
Daily Report	<input type="checkbox"/>	On					
Weekly Report	<input type="checkbox"/>	On					
Monthly Report	<input type="checkbox"/>	On					
<div>Save</div>							

5-1