



CX406

3-HP DUST COLLECTOR

User Manual



TABLE OF CONTENTS

General Safety Instructions.....	3
Specific Safety Instructions.....	4
CX406 Features.....	5
Physical Features	6
Set Up.....	7
Un-Packing	7
Proper Grounding	8
Assembly	9
Test Run	12
Optional Grounding Kit for CX406.....	12
Operation	13
Maintenance	13
Emptying the Collection Bag.....	13
Cleaning the Canister	13
CX406 Parts Breakdown.....	14
CX406 Parts List.....	15
Warranty	16

GENERAL SAFETY INSTRUCTIONS FOR MACHINES

Extreme caution should be used when operating all power tools. Know your power tool, be familiar with its operation, read through the user manual and practice safe usage procedures at all times.

- ❖ **ALWAYS** read and understand the user manual before operating the machine.
- ❖ **CONNECT** your machine ONLY to the matched and specific power source.
- ❖ **ALWAYS** wear safety glasses, respirators, hearing protection and safety shoes, when operating your machine.
- ❖ **DO NOT** wear loose clothing or jewelry when operating your machine.
- ❖ **A SAFE ENVIRONMENT** is important. Keep the area free of dust, dirt and other debris in the immediate vicinity of your machine.
- ❖ **BE ALERT! DO NOT** use prescription or other drugs that may affect your ability or judgment to safely use your machine.
- ❖ **DISCONNECT** the power source when changing drill bits, hollow chisels, router bits, shaper heads, blades, knives or making other adjustments or repairs.
- ❖ **NEVER** leave a tool unattended while it is in operation.
- ❖ **NEVER** reach over the table when the tool is in operation.
- ❖ **ALWAYS** keep blades, knives and bits sharpened and properly aligned.
- ❖ **ALL OPERATIONS MUST BE** performed with the guards in place to ensure safety.
- ❖ **ALWAYS** use push sticks and feather boards to safely feed your work through the machine and clamp the work-piece (when necessary) to prevent the work-piece from any unexpected movement.
- ❖ **ALWAYS** make sure that any tools used for adjustments are removed before operating the machine.
- ❖ **ALWAYS** keep the bystanders safely away while the machine is in operation.
- ❖ **NEVER** attempt to remove jammed cutoff pieces until the saw blade has come to a full stop.

CX406 – 3-HP DUST COLLECTOR

SPECIFIC SAFETY INSTRUCTIONS

- ❖ **READ** and follow all the instructions and safety precautions in the user manual before setup or use.
- ❖ **THIS DUST COLLECTOR** is designed for wood dust only. It is not to be used for other materials such as liquids or metal scraps but not limited to, nails and fillings. It is also not intended to collect large pieces that will not pass through the impeller.
- ❖ **DO NOT** place your hands or tools near the open inlet while the dust collector is running. Turn the machine OFF to repair, service, or inspection (such as clogging).
- ❖ **DO NOT** operate the dust collector in areas exposed to ignition sources such as pilot lights or open flame etc...Suspended particulates may be a source of explosion.
- ❖ **ALWAYS** wear personal protective devices such as masks, respirators, and safety glasses when emptying dust from the collection bags. Proper disposal method should be followed.
- ❖ **MAKE SURE** the collection bags and the top bags are securely fastened to the collector body before every use.
- ❖ **METALLIC OBJECTS** that strike the impeller may produce a spark which can smolder in wood dust for a long period of time before fire or flame is detected. While operating the dust collector, if metal contacts metal, immediately turn the switch to the OFF position and unplug the cord from the outlet, allowing the impeller to come to a complete stop. Empty the dust into an approved airtight metal container and remove all metal objects from dust prior to resuming operation.
- ❖ **CERTAIN WOODS** maybe an irritant or cause an allergic reaction. It is good to know what type of wood dust you will be exposed to, in case there is an allergic reaction. Always wear approved personal safety equipments.
- ❖ **ALWAYS** turn OFF the dust collector and disconnect power, allowing the impeller to come to a complete stop before servicing the dust collector or connected system.
- ❖ **MAKE SURE** you have read and understood all the safety instructions in the manual and you are familiar with your dust collector, before operating it. If you fail to do so, serious injury could occur.

WARNING

The safety instructions given above can not be complete because the environment in every shop is different. Always consider safety first as it applies to your individual working conditions.



CX406 – DUST COLLECTOR

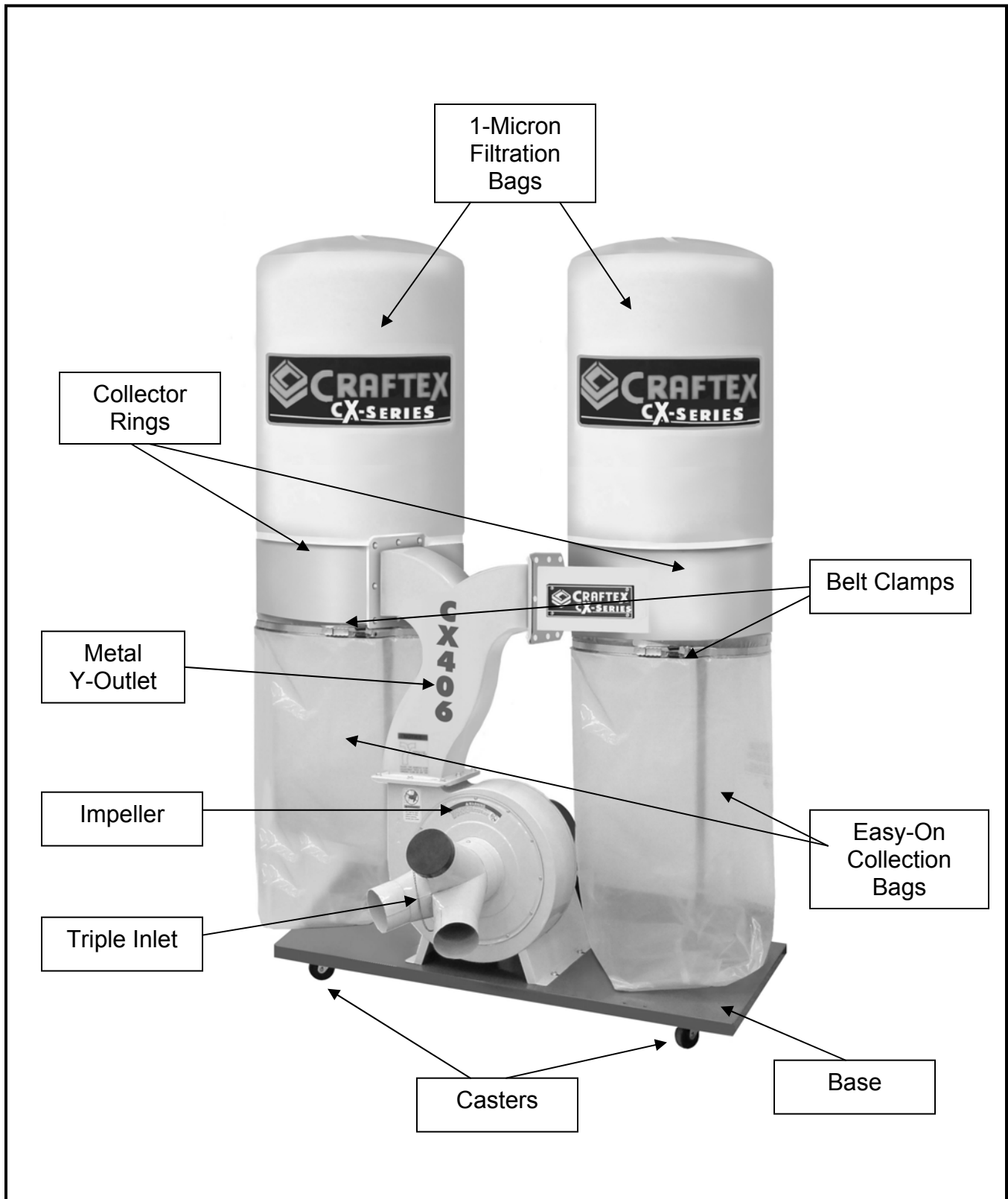
FEATURES

MODEL CX406 - 3-HP DUST COLLECTOR

As part of the growing line of Crafttex CX-Series woodworking equipment, we are proud to offer the CX406 a 3-Hp Dust Collector with Canisters. By following the instructions and procedures laid out in this user manual, you will receive years of excellent service and satisfaction. The CX406 is a professional tool and like all power tools, proper care and safety procedures should be adhered to.

✧ Motor	3 HP, Single Phase, 220 Volt, 12 Amps
✧ Switch	Safety Power Switch with Removable Key
✧ Balanced Steel Impeller.....	Yes
✧ Impeller Size.....	12"
✧ Easy-On Lower Bags.....	Yes
✧ Upper Bag Size	19" x 32"
✧ Lower Bag Size	19" x 32"
✧ Lower Bag Volume	11.10 Cubic Feet
✧ Static Pressure	18.5"
✧ Air Suction Capacity	2,300 CFM
✧ Noise Level.....	85 dB
✧ Intakes	Triple Intake Each 4"
✧ Foot Print.....	35" x 50"
✧ Mobile Base for Easy Movement	Yes
✧ Weight	75 Kg
✧ Warranty	3 Years

CX406 3-HP DUST COLLECTOR PHYSICAL FEATURES



UNPACKING

The machine is properly pack aged and shipped c ompletely in cartons for safe transportation. When unpacking, carefully inspect the carton and ensure that nothing has been damaged during transit.

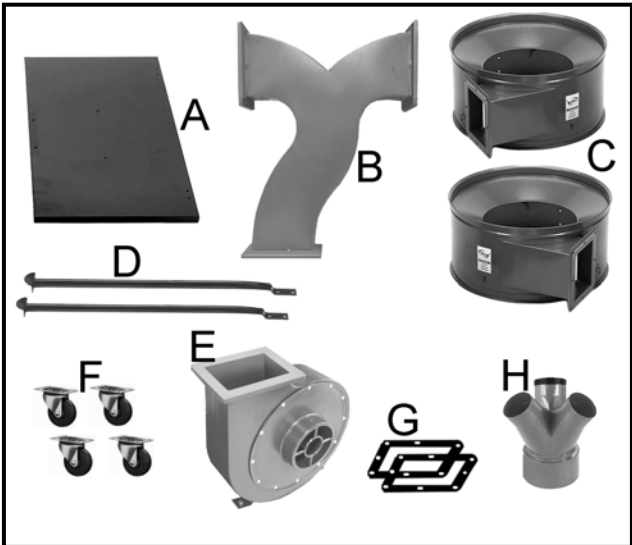


Figure-1 Inventory

LIST OF CONTENTS	QTY
A. Base Unit.....	1
B. Y-Outlet.....	1
C. Collector Ring.....	2
D. Collector Ring Support	2
E. Motor / Impeller Unit.....	1
F. Caster.....	4
G. Gasket.....	3
H. Triple Inlet	1

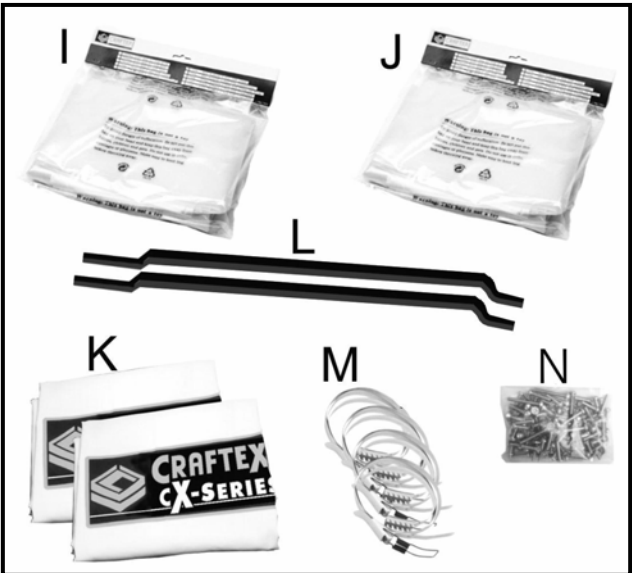


Figure-2 Inventory

LIST OF CONTENTS	QTY
I. Regular Bottom Bag.....	2
J. Easy-On Bottom Bag	5
K. Top Filtration Bag.....	2
L. Upper Bag Support Rod.....	2
M. Bag Clamps	4
N. Mounting Hardware Bag	1

NOTE: While doing inventory , if you can not find any part, check if the part is already installed on the machine. Some of the parts come assembled with the machine because of shipping purposes.

PROPER GROUNDING

Grounding provides a path of least resistance for electric current to reduce the risk of electric shock.

CX406 is for use on a normal 220 volt circuit. Make sure that the machine is connected to an outlet having the same configuration as the plug. If an adaptor plug is used, it must be attached to the metal screw of the receptacle. To prevent electrical hazards, have a qualified electrician ensure that the line is properly wired.

The dust collector should be wired with a plug having 3 prongs to fit a 3 prong grounded receptacle as shown in figure-3. Do not remove the grounding prong to fit it into a 2 pronged outlet.

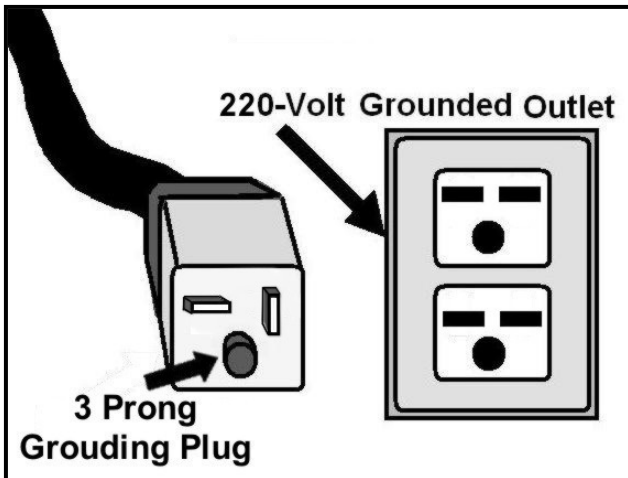


Figure-3 220-Volts outlet for CX406

WARNING

Improper connection of the equipment-grounding conductor can result in a risk of electric shock. Check with a qualified electrician if you are in doubt as to whether the outlet is properly grounded.

It is strongly recommended not to use extension cords with your CX406. Always try to position your machine close to the power source so that you do not need to use extension cords.

In case if you really find it necessary to use an extension cord, make sure the extension cord does not exceed 50-feet in length and the cord is 14-gauge to prevent motor damage.

ASSEMBLY

Follow the instructions below to assemble your CX406.

Take the base unit and turn it upside down and attach the four casters to the base unit as shown in figure-4. Select the appropriate nuts and bolts provided and tighten securely.

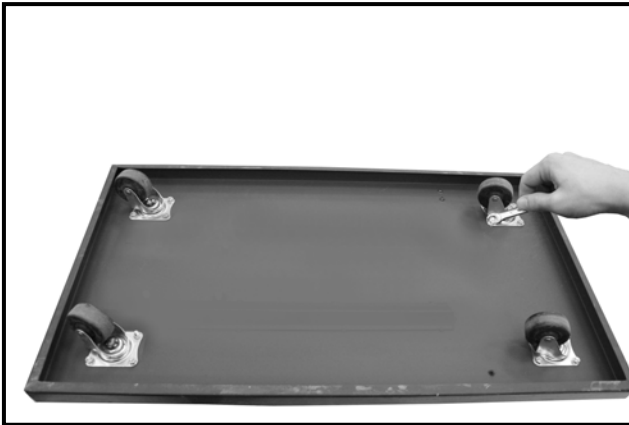


Figure-4 Installing the casters

Turn the base upright and position the motor/impeller unit on it by aligning the holes on the motor/impeller unit with the holes on the base unit. Secure the motor/impeller unit onto the base using nuts, bolts, and washers provided.

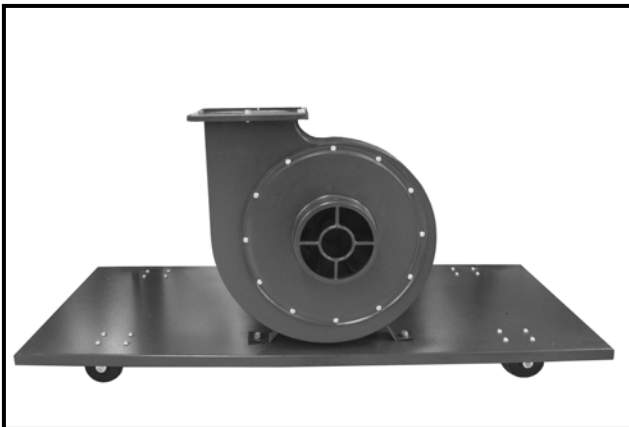


Figure-5 Motor/Impeller unit mounted

Place the rubber gasket on the flange opening of the motor/impeller unit as shown in figure-6.

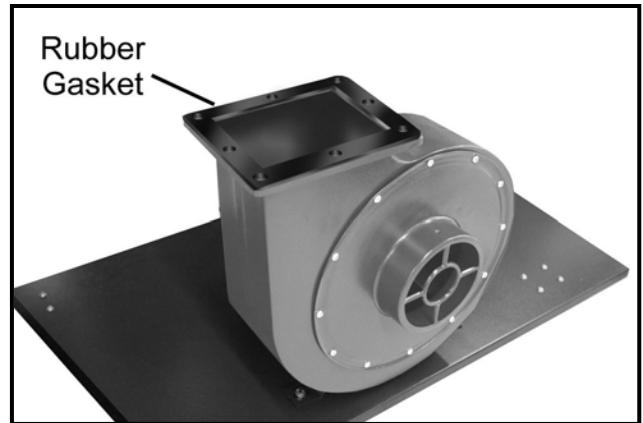


Figure-6 Rubber gasket

Take the Y-outlet and carefully mount it on top of the flange opening as shown in figure-7 and secure it using nuts, bolts, and washers provided.

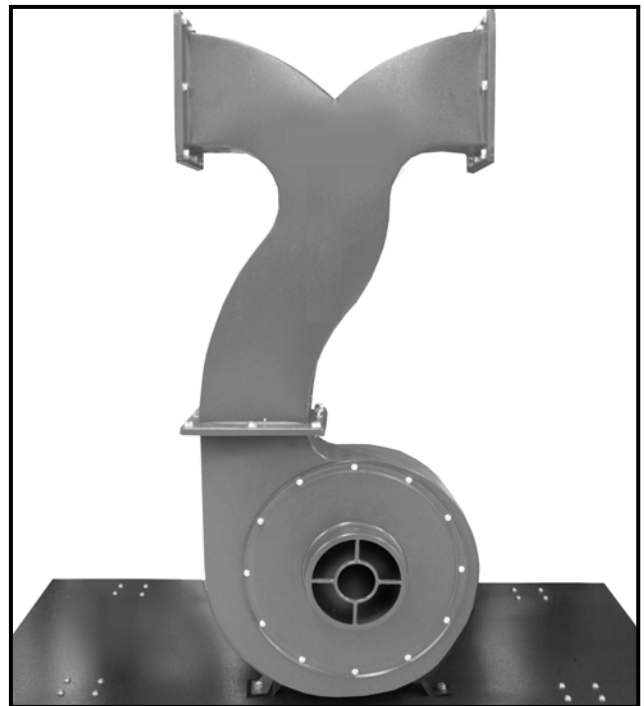


Figure-7 Y-outlet installed

Place the gasket on the collector ring opening and attach the collector ring to the Y-outlet as shown in figure-8. Secure it using screws provided.

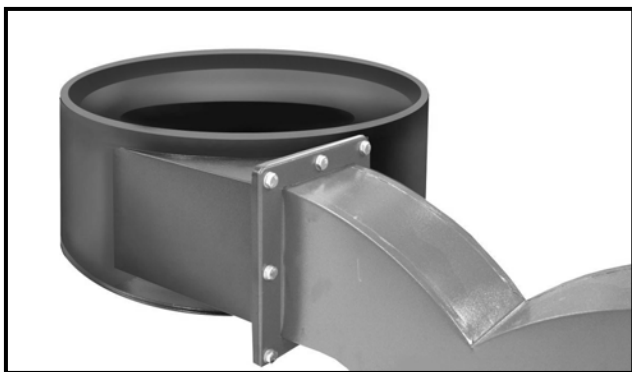


Figure-8 Installing the collector ring

Install the second collector in the same manner.

Attach the collector support with one end to the collector ring and the other end to the base. Secure the bottom end to the base using screws and washers provided. See figure-9.

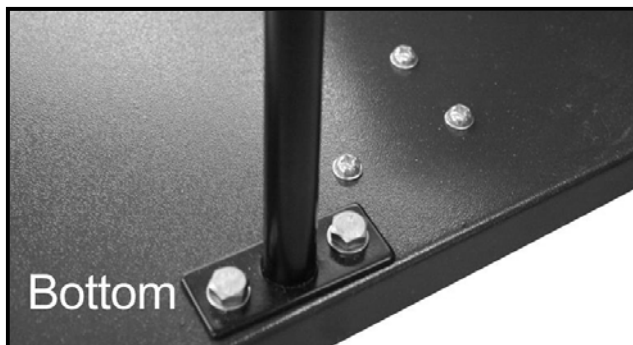


Figure-9 Installing the collector ring support

Attach the second collector to the base support in the same manner.

Now, take the top bag support and align the holes on it with the holes on the collector

support and the collector ring. Secure both using belt clamp provided. See figure-10.

Install the second top bag support rod and collector support to the collector ring in the same manner.

Attach the top bag to the collector rings and secure both using belt clamp provided. See figure-10.



Figure-10 Installing the top bag

Install the second bag in the same manner and secure it with the belt clamp provided.

Your dust collector should come with a regular bottom bag as well as a set of Easy-On bags.

To install the Easy-On bag, insert the belt clamp through the Easy-On bag and attach the bag around the dust collector ring.

To install the regular bottom bag, hook the bags to the hooks around the collector ring. Then use the belt clamp to secure the collection bag around the collector.

Slide the triple intake over the impeller intake hole and secure it using a screw. See figure-11.

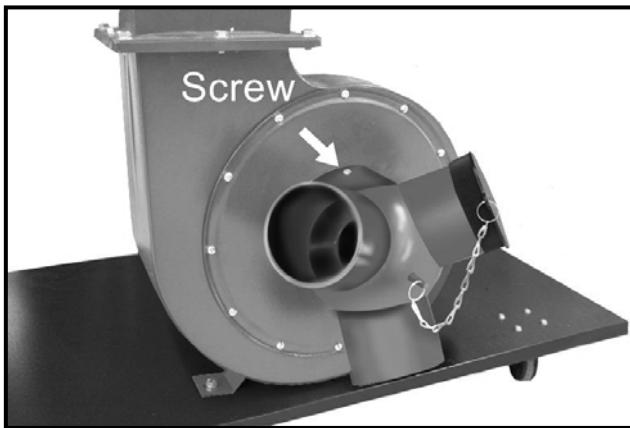


Figure-11 Installing the triple intake

INSTALLING CANISTER (OPTIONAL)

The CX406 does not come with canisters, but you can buy it separately. To install the canister to the CX406:

Attach the adhesive foam to the outside top rim of the collector rings as shown in figure-12 and trim any excessive foam.



Figure-12 Attaching the adhesive foam

Place the canister on the top of the collector ring and position the metal clamp around the canister bottom part. Make sure the canister is sitting evenly on the collector ring and tighten the clamp.



Figure-13 Installing the canister

TEST RUN

Once you have assembled your dust collector, it is then time for a test run to make sure that the machine works properly and is ready to use.

Remove all the tools used for assembling the machine components. Walk around the machine, ensure all nuts, bolts, and screws are tightened and the machine is properly assembled. Connect the cord to the power source and turn the machine ON.

During the test run if there is any unusual noise coming from the machine or the machine vibrates excessively, turn OFF the power switch immediately and disconnect the cord from the power source. Investigate if you can find out the problem with your machine.

WARNING

Before starting the machine, make sure that you have read and understood the user manual and you are familiar with the safety features of the machine. Failure to do so may cause serious personal injury.

WARNING

Do not make any adjustments while the machine is running. Turn off the machine and un-plug from the power source before making any adjustments.

OPTIONAL GROUNDING KIT FOR CX406

Craftex offers an Optional grounding system with the CX406 to decrease the shock hazard (although extremely rare). The sawdust being collected becomes very dry as it travels through the collection pipes or tubes and as it spins through the system it creates a static charge. If this is not grounded, it could give the tool operator a static shock. Although the electrical shock is extremely minor, it may have consequences to some individuals.



Figure-14 Optional grounding kit

The grounding of the pipes or tubes will help eliminate the possibility of these shocks. The copper wire included with the grounding kit should be connected to the steel chassis of the dust collector and fed through a small hole made in the tubing or pipe. The wire should then be fed to the tool being used and grounded to the steel chassis. Should there be more than one tool connected (through gates) to the CX406, they should all be grounded as described above.

OPERATION

Operating the CX406 dust collector is very simple and straightforward.

Make sure the dust collector is properly assembled and worked during the test run. Move the CX406 close to the machine and use a proper size hose connecting the hose with its one end to the machine and the other end to the dust collector.

Make sure the connections are secured using hose clamps and connect the ducting ground and the dust collector is ready for operation.

MAINTENANCE

During the life of your machine, you will need to practice some regular maintenance to keep your dust collector in peak performance condition.

WARNING

Make sure the machine is turned off and the cord is disconnected from the power source before servicing and removing/replacing any components on the machine.

Check your machine daily for loose mounting bolts, damaged cord, worn switch, full collection bag, or any other unsafe condition.

All bearings are shielded and permanently lubricated and do not need any further lubrication.

EMPTYING THE COLLECTION BAG

The collection bags should be emptied at a regular basis allowing the machine to operate at a higher level.

Always wear proper dust mask or respirator while emptying the collection bag. The small dust particles flying into the air while emptying the collection bag can be easily inhaled and is extremely unhealthy, causing serious long term respiratory problems.

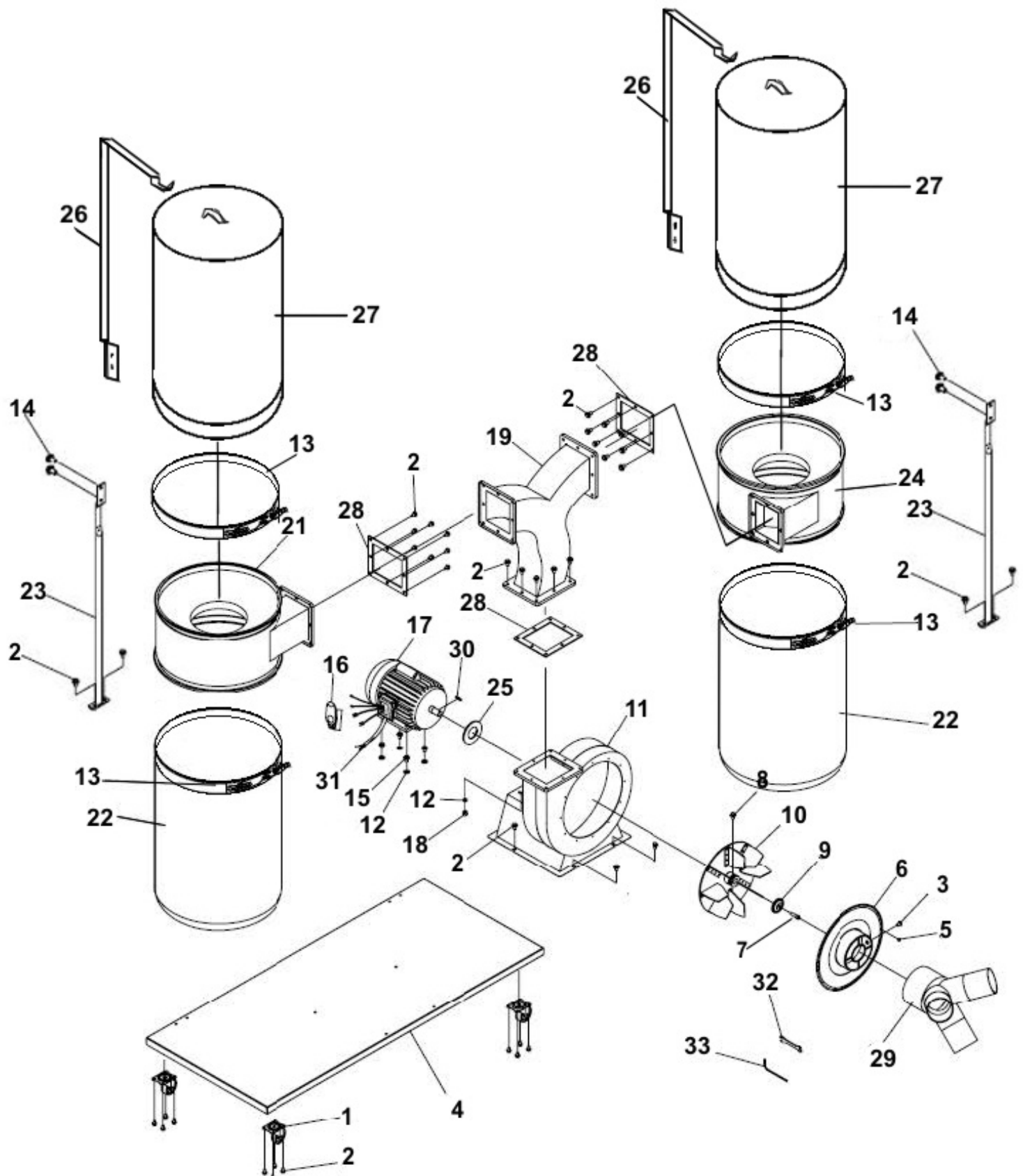
CLEANING THE CANISTER (IF USING A CANISTER)

The canister features a cleaning handle which is used to clean the canister filter. To clean the canister filter simply move the handle back and forth and the trapped dust particles will fall into the collection bag.



Figure-15 Canister filter cleaning handle

CX406 DUST COLLECTOR PARTS BREAKDOWN



CX406 DUST COLLECTOR PARTS LIST

PART#	DESCRIPTION	SIZE	QTY
1	Caster		4
2	Hex Screw	5/16 x 1/2"	48
3	Philips Head Screw	3/16" x 3/8"	1
4	Base Plate		1
5	Pan Head Screw	10-24 x 3/8"	12
6	Inlet Cover		1
7	Hex Head Screw	M6 1.0 x 19mm	1
8	Hex Head Screw	3/8" x 1/2"	2
9	Washer		1
10	Impeller, 12"		1
11	Collector Body		1
12	Washer	5/16"	8
13	Clamp		4
14	Hex Head Screw	5/16" x 3/4"	4
15	Hex Head Screw	5/16" x 1"	4
16	Motor Switch w/Safety Key		1
17	Motor		1
18	Nut	5/16"	4
19	Y-Outlet		1
21	Left Collector		1
22	Collector Bag		2
23	Collector Support		2
24	Right Collector		1
25	Motor Packing		1
26	Upper Bag Support		2
27	Filter Bag		2
28	Gasket		3
29	Triple Gate		1
30	Key	7 x 7 x 28mm	1
31	Power Cord		1
32	Wrench	12mm	1
33	Hex Wrench	5mm	1



WARRANTY

CRAFTEX 3 YEARS LIMITED WARRANTY

Craftex warrants every product to be free from defects in materials and agrees to correct such defects where applicable. This warranty covers **three years** for parts and 90 days for labour (unless specified otherwise), to the original purchaser from the date of purchase but does not apply to malfunctions arising directly or indirectly from misuse, abuse, improper installation or assembly, negligence, accidents, repairs or alterations or lack of maintenance.

Proof of purchase is necessary.

All warranty claims are subject to inspection of such products or part thereof and Craftex reserves the right to inspect any returned item before a refund or replacement may be issued.

This warranty shall not apply to consumable products such as blades, bits, belts, cutters, chisels, punches etceteras.

Craftex shall in no event be liable for injuries, accidental or otherwise, death to persons or damage to property or for incidental contingent, special or consequential damages arising from the use of our products.

RETURNS, REPAIRS AND REPLACEMENTS

To return, repair, or replace a Craftex product, you must visit the appropriate Busy Bee Tools showroom or call 1-800-461-BUSY. Craftex is a brand of equipment that is exclusive to Busy Bee Tools.

For replacement parts directly from Busy Bee Tools, for this machine, please call 1-800-461-BUSY (2879), and have your credit card and part number handy.

- All returned merchandise will be subject to a minimum charge of 15% for re-stocking and handling with the following qualifications.
- Returns must be pre-authorized by us in writing.
- We do not accept *collect* shipments.
- Items returned for warranty purposes must be insured and shipped pre-paid to the nearest warehouse
- Returns must be accompanied with a copy of your original invoice as proof of purchase. Returns must be in an un-used condition and shipped in their original packaging a letter explaining your reason for the return. Incurred shipping and handling charges are not refundable.
- Busy Bee will repair or replace the item at our discretion and subject to our inspection.
- Repaired or replaced items will be returned to you pre-paid by our choice of carriers.
- Busy Bee reserves the right to refuse reimbursement or repairs or replacement if a third party without our prior authorization has carried out repairs to the item.
- Repairs made by Busy Bee are warranted for 30 days on parts and labour.
- Any unforeseen repair charges will be reported to you for acceptance prior to making the repairs.
- The Busy Bee Parts & Service Departments are fully equipped to do repairs on all products purchased from us with the exception of some products that require the return to their authorized repair depots. A Busy Bee representative will provide you with the necessary information to have this done.
- For faster service it is advisable to contact the nearest Busy Bee location for parts availability prior to bringing your product in for repairs.