

TeleCorder

TCwL-2F and TCwL-4F Voice Logging Recorder



User Manual

Version 2.43-F-USA

1. Tele<i>Corder</i> Configurations	3
2. Cable Connections and Testing.....	3
2.1 Identify the Front Panel Components and Rear Panel Connections.....	3
2.2 Connecting to Phone Lines and other Audio Sources	4
2.2.1 Connection for 2 channels with TCwL-2F	5
2.2.2 Connection for 4 channels with TCwL-4F	5
2.3 Power Connection.....	6
2.4 Preliminary Testing.....	6
2.5 Installing Software & Connecting to a PC (Win-2000/XP/Vista/Win-7)..	6
3. Setup via USB Connection to PC	7
3.1 Open Software.....	7
3.2 Recording Process.....	7
3.3 Setting for Phone Line or Voice Activated Recording	7
3.4 VAR Settings (Voice Activated Recording).....	7
3.5 Setting Channels for Operation in VAR Mode.....	8
3.6 Configuring Tele<i>Corder</i> using a PC.....	8
3.6.1 Channel/Port Setup	9
3.6.2 VAR Voltage Threshold (Voice Activated Recording).....	9
3.6.3 Turn Off Delay Time (VAR Space Time)	9
3.6.4 VAR Timeout.....	9
3.6.5 Save or Delete Recordings Less Than 8 Seconds	9
3.6.6 Hardware Information.....	9
3.6.7 Date/Time Setting and Calibrating Time Keeping Accuracy	9
3.6.8 Audio Recording Mode (Quality of Recordings)	10
3.6.9 Limitation for List Displaying	10
3.6.10 Caller ID Detection Settings	11
3.6.11 About Tele <i>Corder</i> PC Software	11
3.6.12 Quit Hardware Information & Settings.....	11
3.6.13 Notes for Setup via PC.....	11
3.7 Setting up Tele<i>Corder</i> using the Built-in HandyPlayer Keypad	11
4. Setup for Accessing the Tele<i>Corder</i> via LAN.....	12
4.1 Reflash Utility — Application to Find or Change IP Address	12
4.1.1 Reflash Utility Application Notes (Version 1.55).....	13
4.2 Settings that can only be accessed via LAN	14
5. Managing and Playing the Recordings	15
5.1 Managing and Playing Recordings with a PC	15
5.1.1 Connection.....	15
5.1.2 Using the Utility Software.....	15
5.1.3 Refreshing the List of Recordings.....	16
5.1.4 Re-Order the List of Recordings	16

5.1.5	Find Recordings using Search Criteria	16
5.1.6	Files, Information	17
5.1.7	Conversion of Recordings and Saving to a PC.....	17
5.1.8	Print and Save the List of Records	18
5.1.9	Deleting Recordings from TeleCorder	18
5.1.10	Hardware, Info & Settings - Access to Hardware Menu	18
5.1.11	Hardware Information	19
5.1.12	Date and Time Setting	19
5.1.13	Set Channels to Voice Activated Recording (VAR)	19
5.1.14	VAR Voltage Threshold.....	19
5.1.15	VAR Turn Off Delay	19
5.1.16	VAR Time Out	19
5.1.17	Save VAR less than 8 seconds or less than 3 DTMF #	19
5.1.18	Audio Recording Mode (Quality of Recordings)	19
5.1.19	Limiting the List of Displayed Recordings	20
5.1.20	Caller ID Detection Settings.....	20
5.1.21	About TeleCorder PC Software.....	20
5.1.22	Quit or Exit the Hardware Info & Settings Window	20
5.1.23	Lock/Unlock with Password.....	20
5.1.24	Modify Password.....	20
5.1.25	Built-in Keypad and USB Passwords.....	20
5.1.26	Play Recordings from the List and Copy to PC.....	21
5.1.27	Monitoring Port Activity and Listening over LAN	22
5.2	Playing Recordings Using the Built-in Keypad	22
5.2.1	Description of the Displayed Symbols	23
5.2.2	Operational Procedures.....	24
6.	Guarantee & Liability	25
7.	Specifications.....	25
8.	Contact Information for Support and Service.....	25
9.	Popular Accessories	26
TSA-3LM	Adapter for Connecting to a Phone Set at Handset Jack	26
TSA-SLM	Adapter for Connecting to a Phone Set, with On/Off Switch..	26
TSA-2A1	Adapter for Connecting to a Phone Set, with Audio Mixer ...	26
RSA-U5	Radio Adapter, with Amplifiers, Mixing, and PTT Sensing ...	26
MOD-SC	Adapter for converting modular phone plug to mini plug.....	26
10.	Notes	27
11.	User Notes	27

TeleCorder

Voice Logging Recorder — Models TCwL-2F & TCwL-4F with LAN

TeleCorder models **TCwL-2F** and **TCwL-4F** with LAN can simultaneously record analog audio from phone lines or other analog audio sources. Recordings start and stop automatically using either phone line voltage sensing or audio activation. They have an internal hard drive where the most recent 7,200 hours of digital call files are stored. While the recorder can be used as a stand alone unit, most users find it easier to set it up and use with a PC (Win-2000/XP/Vista/Win-7). It includes software and cables for PC access via both USB and LAN. Previous TC-02F and TC-04F recorders do not have the LAN feature.

1. TeleCorder Configurations

Model Type	2 Channel TCwL-2F	4 Channel TCwL-4F
Supplied Accessories (phone line cables)	2 each # T-18 (18' phone cable with "T" adapter)	2 each # MTJ-S2 (line splitter) 4 each # T-18 (18' phone cable)
Supplied Accessories (other)	USB & LAN cables, 120V AC Power Adapter (+5v DC), CD with TeleCorder PC software (Win-2000/XP/Vista/Win-7), & this manual.	

If you purchased optional items such as cables and/or adapters for installation to audio sources that do not terminate in standard RJ11 phone jacks, see the instructions that were provided with the optional accessories for additional installation and operation procedures.

2. Cable Connections and Testing

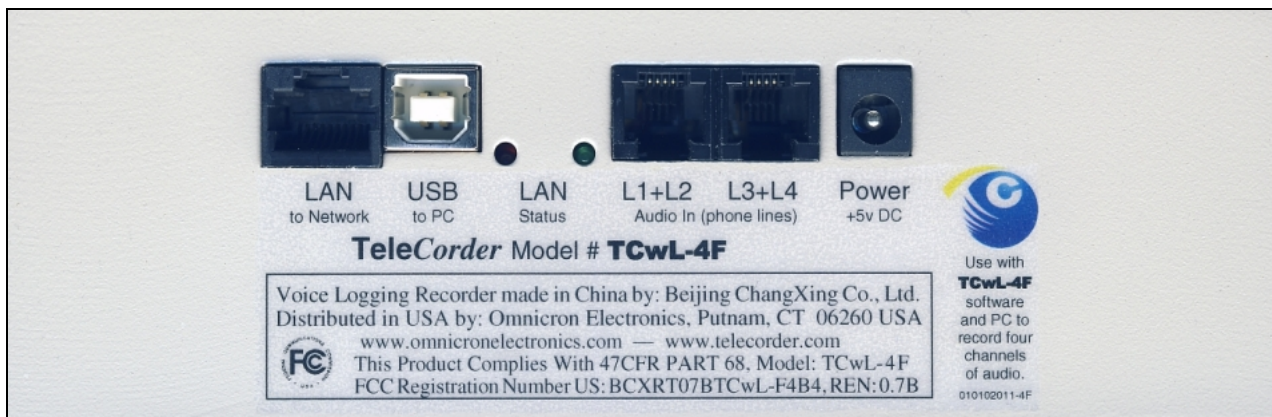
2.1 Identify the Front Panel Components and Rear Panel Connections

Unpack and check the contents of the **TeleCorder** package. Locate the master password page and keep it in a secure place.



TeleCorder front view, showing speaker, LCD display and keypad.

HandyPlayer keypad buttons provide the following functions:	
	Increase or decrease the intensity of the LCD backlight
	Jump down 3 in list of recordings when browsing Advance selected item in set-up and search modes
	No function
	Down 1 when browsing the list of recordings, backward when playing or programming
	View list of recordings, pause/start when playing, press twice to enter search mode
	Up 1 when browsing the list of recordings, forward when playing or programming
	View list of recordings
	Jump up 3 in list of recordings when browsing Decrease selected item in set-up and search modes
	View list of recordings
	Reset Stop playing recordings, return to start-up screen
	Volume adjustment (two levels) when playing. Also used with settings state (0+Enter) and to enter live listening monitor state (0+Reset) when not playing
	Enter, Start/Stop during playback, accept when setting or entering password



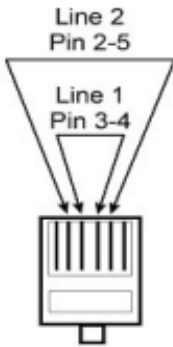
Rear view, LAN and USB jacks for remote access to recordings and configuring via PC, red LAN connection LED, green LAN activity LED, two modular input jacks for connecting to the sources of the conversations to be recorded (two channels per jack with four channel TCwL-4F), and +5vDC input jack for use with the supplied AC adapter.

2.2 Connecting to Phone Lines and other Audio Sources

TeleCorder inputs require 2-wire analog audio such as a direct connection to analog phone lines, two-way radios, amplified microphones, telephone handset or headset audio (analog or digital phones, using direct connection to earpiece audio or optional TSA-3LM or TSA-SLM adapters), etc.

2.2.1 Connecting Audio Sources to the 2 Channel TeleCorder Model TCwL-2F

The **TeleCorder** connects in parallel to your audio sources. With the **TCwL-2F**, there are two modular phone jacks on the back of the **TeleCorder**. Jack 1 (left) is wired for connection to both recording channels/ports using RJ14 type connection (L1 & L2 for this jack, channel 1 is on pins 3 & 4 and channel 2 is on pins 2 & 5). This jack can also be used to connect only to channel/port 1 using the center pair of contacts (as with standard RJ-11 jacks). Jack 2 (right) has the input for channel/port 2 on its center pair of contacts. **Note:** If using the left jack for connection to channel one and the right jack for connecting to channel two, there must not be any connection to pins 2 & 5 as these pins also connect to pins 3 & 4 on the right jack.



Two T-18 cables (18' phone line cable with T-adapter, photo at right) are supplied with the recorder. You can use these or other suitable cables to connect to your phone lines or other audio sources.



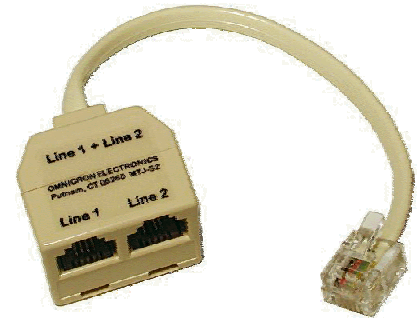
If you wish to record from multiple line analog phones or digital telephone sets, instead of individual phone lines, the most popular way to connect is with a handset audio tap. The handset audio taps, such as the Omnicron TSA-3LM, TSA-2A1, or TSA-SLM are available from your **TeleCorder** representative. Your sales representative can also assist you in selecting other cables or adapters to simplify installation for your application.

2.2.2 Connecting Audio Sources to the 4 Channel TeleCorder Model TCwL-4F

Each modular phone jack on the back of the **TeleCorder TCwL-4F** has connections for two phone lines or other audio sources. When looking at the back panel, the jack on the left is for ports or channels 1 and 2, the jack on the right is for ports or channels 3 and 4.

The modular jacks use pins 3 & 4 for the first input (center pair), and pins 2 & 5 for the second input (see the drawing above left). Each individual input can be referred to as either a Channel or Port.

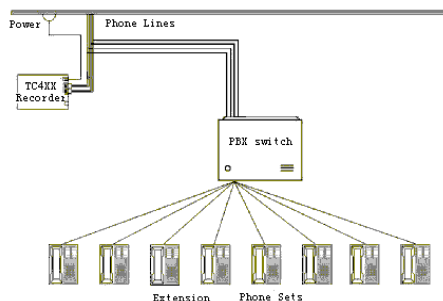
Connect audio sources for channels one and two using the left jack as with instructions for the two channel **TeleCorder** (see above section 2.2.1), and channels three and four to the right jack in a similar manner. The **TCwL-4F** is supplied with two of the MTJ-S2 splitters (see image on right) to provide individual jacks for each input and four T-18 cable sets for connecting to phone lines.



If you wish to record from multiple line analog phones or digital telephone sets, instead of individual phone lines, the most popular way to connect is with a handset splitter or handset audio tap such as the Omnicron TSA-3LM, TSA-2A1, or TSA-SLM that are available from your **TeleCorder** representative. Your sales representative can also assist you in selecting other cables or adapters to simplify installation for your application.

If it is not convenient or possible to install using standard modular jacks, identify the pair of wires for each line or audio source and connect in parallel to each individual input on the **TeleCorder**.


With bundled phone wiring, you must first identify the line pairs among the wiring cables and then connect the wires from the **TeleCorder** inputs to these pairs. Equipment and wiring diagrams may be required to expedite proper installation. Check with your phone or wiring provider for assistance as needed.



2.3 Power Connection

Plug the supplied 5 volt power supply (photo at right) into a standard 110v AC outlet and connect its output cable to the **Power +5vDC** jack on the back of the **TeleCorder**. The LCD on the front of the recorder will light up blue to indicate that power is connected. Since the **TeleCorder** is designed to be in service 100% of the time, there is no power on/off switch. To turn the recorder OFF, unplug the AC power cord. To turn it ON, plug it in.



- To increase the brightness on the LCD display, press the  button.
- Press again to decrease the intensity of the LCD backlight.

2.4 Preliminary Testing

Normal Operation:

- Text will be displayed on the LCD display a few seconds after external power is applied. Depress the “1” button to increase the brightness, depress it again to decrease the backlight brightness.
- With no activity on any of the inputs, the display will show **TeleCorder** and the current date and time. When inputs are active, the middle line of the display will show: Recording and which inputs are active. By default, channels are set to Voice Activated Recording (VAR). If any **TeleCorder** inputs are connected to standard phone lines, these channels should be set for voltage sensing so that they are not triggered by noise on the phone lines between calls. Use either the supplied PC software, or front panel buttons (see Section 3.7 in this manual), to set phone line channels for voltage sensing start/stop.

2.5 Installing Software and Connecting to a PC (Win-2000/XP/Vista/Win-7 32/64)


If connecting a **TeleCorder** to a PC that has a previous version of the **TeleCorder** product, you have to remove the previous software and old .dll files. Go to **PC Start Menu > Control Panel > Add or Remove Programs**. Look for the .dll file name **FTD2XXX** and remove it. Then scroll down to **TeleCorder** software and remove it. You are now ready to install the new software and drivers.

Install **TeleCorder** software onto your PC from the CD included with your recorder prior to connecting the recorder to a USB port on the PC or to your network via the LAN connection.

See “**Read-Me**” notes on software CD for additional information and for instructions that will permit you to update older **TeleCorder** recorders so that they can be used with a Win-7 and/or a 64-bit PC.

Insert the CD into the drive on your PC. If it does not auto run, look at the files on the CD using file manager and open “**AUTO.BAT**” (Win-2000 through Win-7) and follow on screen instructions.

When complete, the **TeleCorder** program will be installed on your computer. It will be listed in Programs, and be listed in Control Panel add/remove programs. There should be an icon on your desktop

 for **TeleCorder** software (image at left). If the PC will be used for configuring the recorder for LAN access, copy the **Reflash Utility** file “**TCwL_Reflash**” from the software CD to your PC desktop (you can also run it from the CD). Follow the

instructions in Section 4 for LAN setup using the **Reflash Utility** (image at right).

NOTE: If you run the **TeleCorder** program without a **TeleCorder** connected to your PC, or if the **TeleCorder** power is off, you will see “**ERROR: No TeleCorder device connected!**”. If it does not find a recorder on the LAN, use the **Reflash Utility** (See Section 4) to configure the recorder for LAN access from your PC.


The **TeleCorder** is normally left powered ON at all times, there is no power On/Off switch. To turn it OFF, unplug the power cord. If your **TeleCorder** is not already powered ON, connect it to AC power using the supplied AC adapter and wait for it to display time and date. Connect the supplied USB cable (photo at right) from the USB port on the back of the **TeleCorder** to a



USB port on your computer. The first time you connect the **TeleCorder** to your computer, your PC should display “**New Hardware Found**” “**serial converter**” message, and automatically install the proper driver (may take 15-30 seconds).

Run the program by clicking on the **TeleCorder** icon on your PC desktop, or from the Start/Programs list. Refer to manual Section 3 (below) for detailed information.

3. Setup via USB Connection to PC

3.1 Open Software and run the **TeleCorder**  icon on your PC desktop or from the programs list if the icon is not on your desktop. See manual Section 5.1.2 for screen image when connected to the recorder via USB.

3.2 Recording Process

When connected to standard telephone lines, the **TeleCorder** will automatically record the telephone number, or the number dialed with the duration of the recording and the voices of the conversation. You don't need to change your procedure for making or receiving your calls. Nevertheless, the following points should be considered. When connected to phone lines, channels should be set to start/stop recording using the voltage sensing mode, not the VAR mode (hardware set-up from key-pad, or **Info & Settings** screen using a PC).

- a) If Caller ID numbers are not displayed, confirm with your telephone company that your phone lines have the caller ID feature enabled. Otherwise, there will not be caller phone numbers recorded and displayed when managing the recordings. If you are connected to telephone handset audio, the recorder will not show caller numbers and will only show dialed out numbers if the handset has standard DTMF tones when dialing. Also check to be sure phone line channels are set for voltage sensing, not for **VAR** start/stop.
- b) Always wait to answer a call until after the second ring so that the phone number from the calling party can be received and stored with the recording.
- c) When channels are set to start and stop recording using Voice Activated Recording (**VAR**), outgoing calls will not be saved unless they are longer than 8 seconds and contain a minimum of 3 dialed digits (DTMF tones) if this feature is selected in the settings menu. This function can be used to minimize false recordings and does not apply when using voltage sensing.

3.3 Setting for Phone Line or Voice Activated Recording (VAR)

When you first connect a new **TeleCorder**, default settings for all channels will be for Voice Activated Recording (**VAR**). Channels connected to phone lines should have their start/stop mode changed to the voltage sensing start/stop mode. In this mode, instead of monitoring audio levels, the recorder will monitor for DC voltages on the selected inputs to indicate on-hook and off-hook status. The phone line voltage is high when the circuit is not in use and will drop to a lower voltage when it is being used. Any channels set for on-hook/off-hook voltage sensing that are not connected to a phone line will not show any recordings due to the lack of the DC voltage changes that are required to initiate a recording in this mode.

If you connect any of the **TeleCorder** inputs to audio sources that do not have standard on-hook/off-hook voltages, these channels must be set for audio or voice activated recording (**VAR**).

3.4 VAR Settings (Voice Activated Recording)

Recorder channels set for the **VAR** mode will detect the voice level on the line to start a recording. It will start recording when a preset audio level is reached (normal conversation levels), and stop after the audio drops below this threshold (no sound other than weak background noise) for a preset period of time. The length of quiet required for the recording to end is called “turn off delay”.

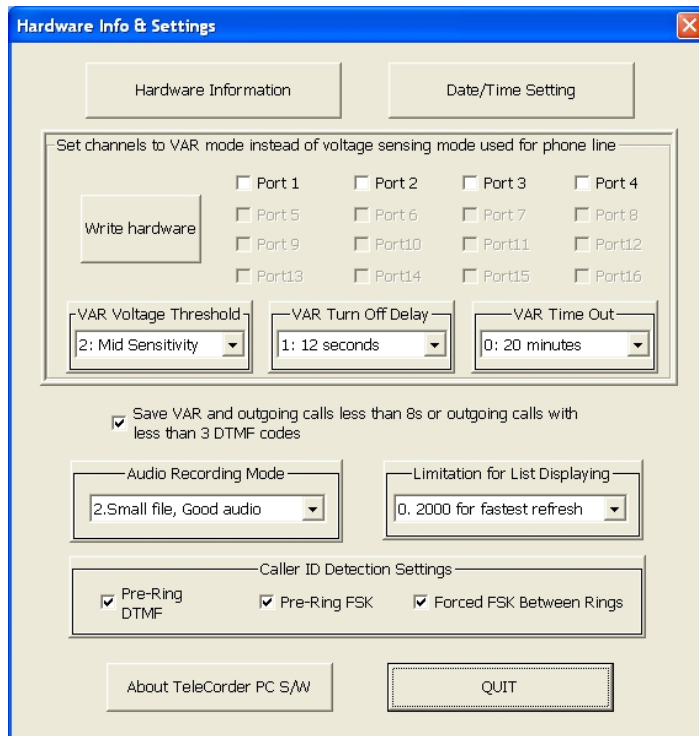
	Phone Line Recording	Voice Activated Recording (VAR)
Requirement to Start	Phone Line DC voltage lower than the threshold (<20v DC)	Audio level on input is loud enough or louder than preset threshold required to start recording
Requirement to Stop	Phone Line DC voltage higher than the threshold (>20v DC)	Audio level is lower than preset level required to continue recording for the selected turn off delay
Suggested Uses	Recording from standard Analog phone lines	<ol style="list-style-type: none"> 1. Radio recording, broadcast or two-way 2. Amplified microphone 3. Audio picked up from handset or headset of analog or digital telephone set (single or multi-line phone) 4. Analog phone line recording where DC voltage sensing cannot be used
Parameters	<ol style="list-style-type: none"> 1. DC Voltage Threshold: (This threshold is preset in the TeleCorder through hardware components and cannot be changed via software). 	<ol style="list-style-type: none"> 1. VAR or Off-Hook Mode for each channel 2. Threshold in 4 levels 3. Turn off delay/VARspace: (4, 12, 32, or 100 seconds) 4. VAR Time-Out to limit long recordings and start a new recording: (20, 40, 60, or 80 minutes)

3.5 Setting Channels for Operation in VAR Mode

You can use either your PC or the keypad built into the **TeleCorder** to select Phone Line recording or VAR mode (Voice/Sound Activates Recording), and to change and confirm these and other operating parameters.

3.6 Configuring TeleCorder using a PC

Using your PC with the **TeleCorder** program running, select **Info & Settings** from the main screen. You will open the **Hardware Info & Settings** screen as shown here. From this button you will gain information about the **TeleCorder** including version number, capacity, media's usage, recorded call items, deleted call items, etc.



3.6.1 Channel/Port Setup: Each channel (Port) in the recorder can be set to start and stop recording using either audio activation (VAR) or voltage sensing. Channels showing a check mark in the boxes labeled **Port 1**, **Port 2**, **Port 3**, or **Port 4**, are set for VAR recording. Channels with no checkmark indicate they are set for phone line recording. For any channel you want to start/stop recording using the phone line voltage sensing mode, click on the box for that channel to remove the check mark, then click the **Write Hardware** button to confirm any changes. The two channel TCwL-2F uses Port 1 & 2. The four channel TCwL-4F uses Port 1, 2, 3, and 4. Disregard settings not used with your recorder.

3.6.2 VAR Voltage Threshold: Default is Mid Sensitivity and is best for most applications where you recording conversations. Set the threshold level to match the audio level on your audio source.

L0: Extra Sensitive, suitable for weak audio sources with low background noise level (for example, with weak earphone or line-out recording).

L1: High Sensitivity, suitable for normal line level audio sources with low background noise levels (normal phone handset earpiece audio or weak speaker of radio).

L2: Mid Sensitivity, suitable for higher than normal audio levels and/or higher background noise levels (for recording from a noisy phone line when voltage sensing cannot be used due to non-standard voltages or with normal speaker audio from a radio).

L3: Low Sensitivity, suitable for very high audio levels, and high background noise levels.

Recording may stop if audio levels are too weak (phone recording with non-standard and very noisy DC voltages, or extra loud radio audio).

After making changes, click the button labeled **Write Hardware** to confirm any changes (image at right). You may be asked to quit the program and try again. You may also need to un-plug and re-connect the **TeleCorder** power or USB cable to successfully change the **TeleCorder** operating parameters.



3.6.3 Turn Off Delay Time: Default is 12 seconds. If any channels have VAR selected for recording start/stop, also select one of the four turn-off-delay options (**VAR Turn Off Delay**): 4, 12, 32 or 100 seconds. This setting will help to prevent recordings from ending during quiet periods. Click the **Write Hardware** button to confirm any changes.

3.6.4 VAR Timeout: Default is 20 minutes. If any channels have **VAR** selected for start/stop, set the timeout to one of the four choices: 20, 40, 60 or 80 minutes. This setting will limit the maximum length of a recording for easier management of long conversations or for when recording from broadcast radio where pauses may not be long enough to separate individual recordings using **VAR** for start/stop. If a recording reaches the maximum length of time that you select for **VAR Time Out**, that recording will end, and a new recording on that channel will begin. Click the **Write Hardware** button to confirm any changes.

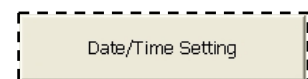
3.6.5 Save VAR and Outgoing Calls Less than 8s or Outgoing Calls with Less than 3 DTMF Codes: Click on this option to place a check mark in its box if you want to save recordings that are less than 8 seconds long. If this box is not checked, **VAR** recordings shorter than 8 seconds, and outgoing telephone calls with less than 3 DTMF digits, will not be saved.

This setting is normally used if external noise causes frequent and unwanted false audio activated recordings. It is normal to record all activity on the monitored circuits. Use care when setting to delete short recordings. This setting can only be changed from the PC. It cannot be changed from the keypad.

3.6.6 Hardware Information: Click on this box to show information about your **TeleCorder**: hardware version, model type, number of calls recorded, number of calls deleted, total length of all recordings (in hours, minutes and seconds), total length of deleted recordings, and percentage of storage space used. Information displayed is only for files shown on the list of recorded calls shown on the PC.


3.6.7 Date/Time Setting and Calibrating Time Keeping Accuracy: Your Recorder has an internal real-time-clock (RTC) that can be set to your local date and time either by the recorder's front panel keypad or by the **TeleCorder** program running on your PC.

To set the date/time to the date/time from your PC, click on the **Date/Time Setting** button and select **YES** by clicking on the **Copy the date/time setting from PC to TC device?** button.



Time keeping accuracy is determined by operating temperature and quartz crystal accuracy. If the

RTC clock is not as accurate as expected, recorders with hardware version 4.06 can be calibrated for higher accuracy using the **Reflash Utility** (V1.55) that was installed onto your PC (see Section 2.5 and 4.1 of this manual). Changes to the RTC calibration numbers should be done carefully after observing if the clock is gaining or losing time over many days. Changing the calibration numbers after monitoring accuracy for a period less than a minimum of one or two days will not produce accurate results.

With the recorder connected to your PC via USB, open the  **TC Reflash Utility** (V1.55). Note the settings for **RTC Calibration on TcVcom Devices** and **RTC Base Freq on TcVcom** as shown in the image below.

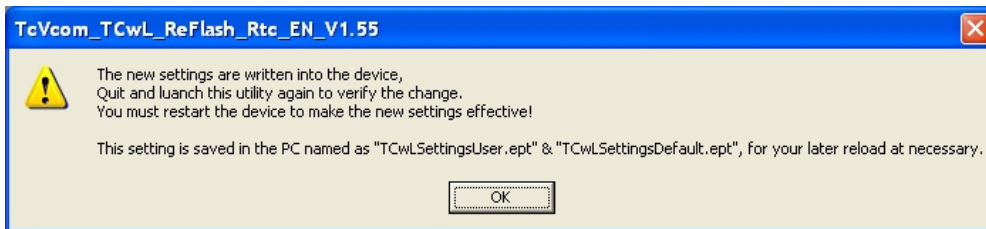


Calibration of the clock is accomplished by changing the numbers in the boxes shown as “0” and “32768” in the above image. You must close **TeleCorder** software prior to using the **Reflash Utility**.

RTC Calibration on TcVcom Devices can be set to any number between 0 and 127. Each increment will fine tune the RTC calibration slower by approximately ½ second per week. A lower number will speed up the clock over a period of days and a higher number will slow down the clock.

RTC Base Freq on TcVcom can be set between 32665 and 32771. This is a course setting: each increment changed to a lower number will force the clock to run faster by approximately 2.6 seconds per day. Going to the next higher number will force the clock to run slower by approximately 2.6 seconds per day. For example, changing two increments by going from 32768 to 32770 would cause the clock to run about 5 seconds slower per day. Changing from 32768 to 32767 would cause the clock to run faster by approximately 2.6 seconds per day. Calibration is periodic, not constant — check for improvement in RTC accuracy after a few days. Checking after only a few hours will not provide accurate readings.

When finished, be sure to click on the **Change Device Settings as Wanted** button. **To lock the new settings into memory, power must be cycled** (power the recorder down by disconnecting power and re-connecting after a few seconds). Re-sync time to the PC and confirm the improvement in accuracy after a few days. Fine tune the calibration settings as necessary.



NOTE: If the **TeleCorder** is connected to your network, the time can be set to synchronize with your PC daily when the software is opened and at noon time and minimize the need to calibrate the RTC (see Section 4.2).

3.6.8 Audio Recording Mode: From this sub-button you can set the quality of recordings.

- Mode 0 --- Large file, good audio.
8bit linear PCM mode used in the 1st generation recorders.
- Mode 1 --- Tiny file, poor audio.
2bit ADPCM mode.
- Mode 2 --- Small file, good audio (default).
3bit ADPCM mode. Default mode set from factory.
- Mode 3 --- Large file, best audio.
8bit nonlinear PCM mode.

3.6.9 Limitation for List Displaying: From this sub-button you can set the list display features to speed up the list refresh process or to have more items displayed in the lists of recordings shown on your

PC in the main **TeleCorder** program screen. The default setting is 2000 for fastest speed. You can select a different number, such as 10000, 32768 or 65536, respectively. This selection is saved in software, not as a hardware setting and will be reset to 2000 every time the software is closed.

3.6.10 Caller ID Detection Settings: From this sub-button you can set (turn on/off) the caller ID detection features.

Pre-Ring DTMF Detection: If the local caller ID mode is DTMF and sent before the ring, you must turn this feature on. Otherwise, if erroneous caller numbers are sometimes received, you should turn this feature off.

Pre-Ring FSK Detection: If the local caller ID mode is FSK and sent before the ring, you must turn this feature on. Otherwise, if erroneous caller numbers are sometimes received, you should turn this feature off.

Forced FSK Between Rings: If your caller ID signaling is FSK and sent between the rings, you must turn this feature on. This is the normal setting for North America.

3.6.11 About TeleCorder PC S/W: From this sub-button, you can see additional information about the **TeleCorder** software.



3.6.12 QUIT: Use this sub-button to exit the **Hardware Information & Settings** window.

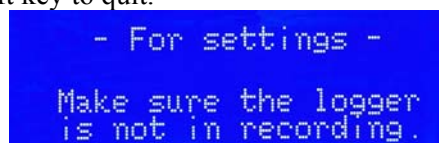
3.6.13 Notes:

1. The above settings must be locked into the **TeleCorder** hardware by restarting the recorder. After any of the above settings are changed, they will not take effect until the recorder is restarted by turning off or disconnecting AC power to the **TeleCorder**, waiting a minimum of ten seconds, and powering the **TeleCorder** back on. Any changes made in software should now be locked into the recorder's internal memory.
2. To avoid interruption of active recordings, you should only set the above items while the recorder is idle. Wait until no channels are active or unplug inputs prior to changing settings.
3. After the settings have been changed, check to make sure that the recorder is functioning as expected.
4. The recorder listens for outgoing numbers dialed using DTMF/touch-tone signaling and stores them with the recording. It is possible for it to document and record false phone numbers when the recorder is in the VAR mode (particularly when recording broadcast radio music where the audio can mimic sounds of dialing). To avoid collecting and recording these erroneous numbers, you can use the PC interface to disable storing of dialed digit signaling.

3.7 Setting up your TeleCorder using the Built-in HandyPlayer Keypad

See **Section 5.2 & 2.1** for more detailed descriptions of HandyPlayer buttons and operation.

Simultaneously depress the **0**  and **Enter**  Setup keys on the HandyPlayer to enter into the setup mode. When using the setup mode, the recorder should not be recording (if necessary, disconnect input cables). Advance through the various setup parameters by pressing the **0** key. When in the setup mode, parameters to change will be underlined. Use the **4** or **6** keys to change which character is highlighted and the **2** and **8** key to change the value of the highlighted character. Use the bottom right key to save changes or the bottom left key to quit.



```
- For settings -  
Make sure the logger  
is not in recording.
```

The setup modes provided on the HandyPlayer are:

- a. Set for current date & time: Year/Month/Day/Hour/Minute/Seconds
- b. Set display format: Year/Month/Day, Month/Day/Year, or Day/Month/Year


- c. Set Audio Compression mode (for phone/radio, leave at “2-Adpcm3bit-24k)
- d. Set ports for VOX or Voltage Sensing. **1** for VOX **0** for Voltage sensing and set VAR Threshold/Delay/Timeout (default is **2-12-20**) see setup by USB for details
- e. Set Password. Password is not required for accessing via HandyPlayer if set to 0000 (default)

4. Setup for Accessing the TeleCorder via LAN

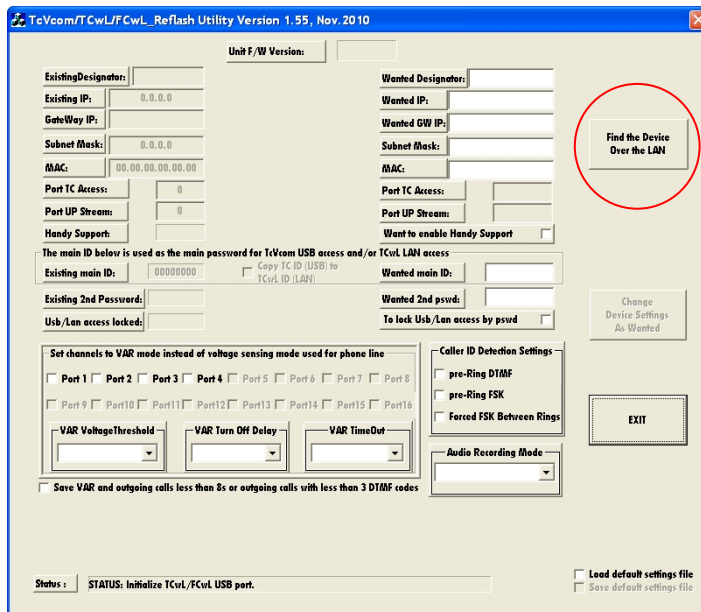
After installing the **TeleCorder** by connecting it to your phone lines or other sources of conversation audio and confirming that it is functioning properly, you are now ready to use the **Reflash Utility via a USB connection** to setup access to the recorder from a network (LAN). Configure the IP address, Subnet, and Default Gateway. Then select “change device settings” button, and restart the unit (power Off and ON and unplug and reconnect the USB cable).

4.1 Reflash Utility Application to Find or Change IP Address

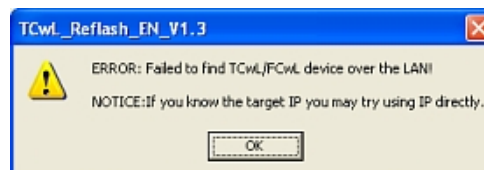
Connect the LAN cable to a network switch or to the LAN port on the back of your PC and then to the LAN port on the **TCwL-2F** or **TCwL-4F**. Check to see that the cable connection indicator (RED) LED and activity (GREEN) LED are lit on the back of the unit. Then proceed to run the **Reflash Utility** to find the recorder on the LAN.

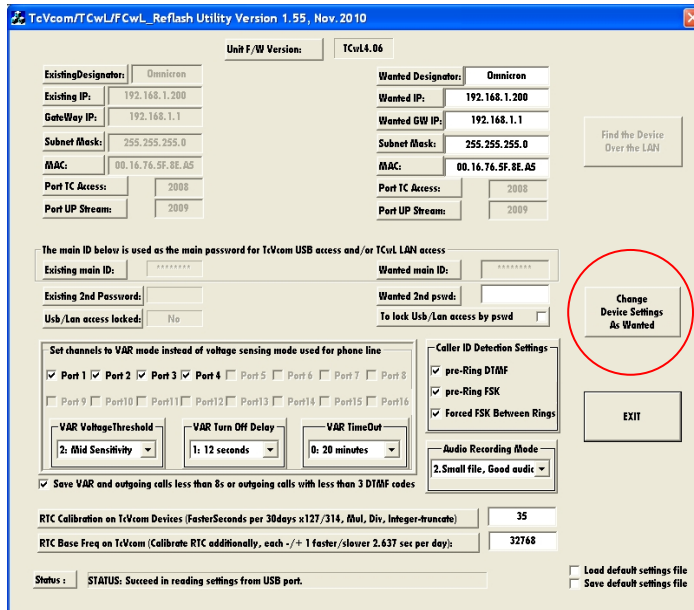
With the recorder connected to your network (LAN) or Ethernet port on a PC, open the  **TC Reflash Utility** that was installed onto your PC earlier (Section 2.5) to find the unit on the network. Initially the IP address for **TCwL-2F** and **TCwL-4F** is set as "192.168.1.200". If the IP segment of your network is within the same range (“192.168.1.*”) it should be found by your PC. Be patient, this may take some time (many seconds). If more than one recorder is connected to the same LAN, the IP addresses must be different.

NOTE: The utility will look for **TeleCorder** recorders connected via USB first and if no **TeleCorder** is found on the PC USB ports, it will look for **TeleCorder** on the LAN. When connecting to recorders on the LAN, you will need to disconnect any recorders connected to the PC via USB.



Select **Find the Device Over the LAN**. It will display the factory set IP address on the screen when it is found by the **Reflash Utility** application.





If the recorder cannot be found via the LAN, the IP address of the unit can be entered into the “Connect Directly Using Wanted IP” box to search for the specific IP address. If your IP address range is within the default range of the unit (192.168.1.200) you will not need the USB connection to access the **TCwL-2F** or **TCwL-4F**.

If the recorder cannot be found via the LAN, connect a USB cable between a PC and the back of the recorder, then run the **Reflash Utility** (V1.55 or higher) and edit the device settings. When finished, be sure to click on the **Change Device Settings** button. To lock the new settings into memory, power must be cycled (power the recorder down and up).



When done, disconnect the USB and run the **Reflash Utility** again. When the **Reflash Utility** finds the device, you are ready to run the **TeleCorder** software and access the recorder via the LAN connection.

When the **Reflash Utility** (V1.55 or higher) is open and the device is found over the LAN, port settings can be changed using the **Reset by IP** command. Find the device over the LAN, make your setting changes, select the “Reset by IP” button then select the “**Change Device Settings As Wanted**” button. Close the SW and reopen to verify changes.

4.1.1 Reflash Utility Application Notes (Version 1.55):

TCwL-2F and **TCwL-4F** can be connected via USB or LAN. The utility will check for recorders from USB at boot stage automatically (first). If no USB is detected, you can force it to search for the recorder over the LAN via the **Find the Device Over the LAN** button. The device default IP will have to be within the same range as the network for this to work.

The Direct IP input field for direct connection and setting can be used if the device is not found over the LAN. Enter the IP and select find.

If you have a problem reading the device, you may check the right-bottom corner box to **Load default settings file** (factory defaults).

When the device is successfully found, you can read the existing settings information from the device. All these settings are copied into the **Wanted settings fields**. Edit these as necessary for your application.

- .F/W Version: ex. FCwL4.05.
- .Existing IP: ex. 192.168.1.200.
- .Subnet Mask: ex. 255.255.255.0.
- .Existing MAC: ex. 00.16.76.5F.8E.A5.
- .Port TC Access: ex. 2008.
- .Port UP Stream: ex. 2009.

- .Handy Player Support:** Yes (check mark for YES is default).
- .Existing Main ID & Wanted Main ID:** This is the Master Password and is not available to view.
- .Existing 2nd Password:** The 2nd password created by the user can be used to unlock access to the LAN as well as the Master Password (original recorder ID) if it is locked (password protected).
- .LAN Access Locked:** Yes/No. Select if the LAN access is password locked (protected).

When editing and testing settings is complete, you should check the box to **Save default settings file** to save the default settings (as a template).

Make necessary changes for the logger's line parameter settings (VAR modes etc.).

- .Port 1-4:** Checked if VAR mode is wanted, default is **audio activation**.
- .VAR Voltage Threshold:** Define the VAR sensitivity, Levels 1-4, default is **mid sensitivity (2)**.
- .VAR Turn Off Delay:** Define time to wait for audio before turning off, levels 1-4, default is **12 sec**.
- .VAR Time Out:** Define the Max length of call, Levels 1-4, default is **20 min. default (0)**.
- .Caller ID Settings:** All selected unless erratic characters result. USA standard is **FSK**.
- .Audio Recording Mode:** Recommended setting is the default, default is **Small file good audio (2)**.

After editing, you can click the **Change Device Settings As Wanted** button to save the new settings into the device.

NOTE: Be aware that the new settings will take effect after the device restart (power off and on).

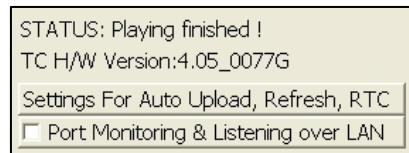
The new settings will be saved in files named **TCwLSettingsDefault.ept** and **TCwLSettingsUser.ept**. The files are saved to your PC. You may load these settings back into the logger as necessary. It is very important to check all settings before restart. Quit this application and launch again to check and verify your settings.

NOTE: Most settings can be changed via the USB or LAN connections once the unit is installed. You can force the new settings remotely via the Reset by IP and then Change Device Settings as Wanted.

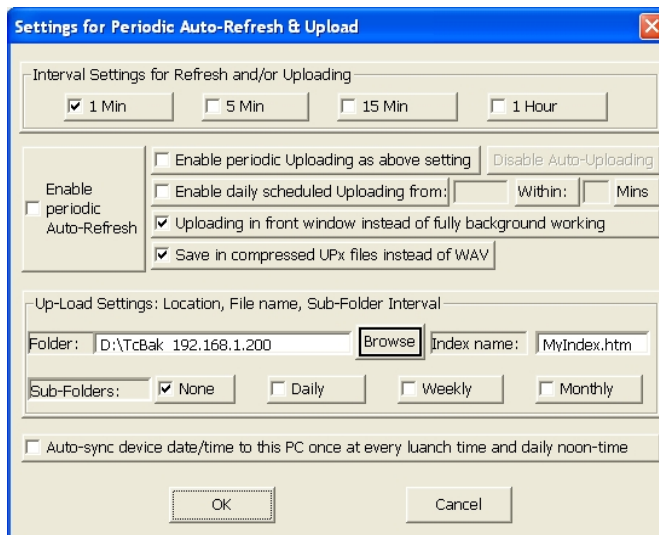
4.2 TeleCorder Settings that can only be accessed via LAN connection to PC

Most recorder settings and functions that can be setup via LAN are the same as setting up and operating via USB (see manual Section 3).

When you open the **TeleCorder** software and it connects to the recorder via LAN, the lower left corner of the software window will show as with the image on the right instead as what shows when connected via USB connection as shown in manual Section 5.1.2.



Clicking on the **Settings For Auto Upload, Refresh, RTC** button provides access to the functions only available via LAN and will open the window shown below (see Section 5.1.27).



Interval Settings for Refresh and/or Uploading: If you wish the list of recorded calls to automatically refresh, select the interval here. Select either 1 minute, 5 minutes, 15 minutes, or 1 hour and place a check in **Enable periodic Auto-Refresh** button. When connected via USB, every 1 minute is the only option. Leave all boxes unchecked if you do not wish the list to be automatically refreshed (click **Refresh** on main window to refresh manually at any time).

The interval setting is also used to set the frequency for automatically uploading copies of the recordings to the PC when it is connected to the recorder via LAN. Use the buttons to **Enable periodic Uploading as above setting**, etc. to enable this feature and manage the file type and where the recordings are stored on your PC.

Auto-sync device date/time to this PC once at every launch time and daily noon-time:

Activate this function if you wish to have the recorder automatically set its time/date to the PC. If selected, the update will only take place when the software is open on your PC and it is connected to the recorder.

5. Managing and Playing the Recordings

5.1 Managing and Playing Recordings with a PC

The **TeleCorder** does not require a PC for setup, recording or playing back recorded conversations. However, you may find it more convenient to operate it from a PC. With a PC you will also be able to convert recordings to standard wave files and archive them to storage on your PC. Playing selected recordings from a PC will not inhibit recording or simultaneous playback of recordings from the **TeleCorder** using its built-in HandyPlayer.

The PC does not have to be **ON** or connected to the **TeleCorder** for it to function. Connecting the **TeleCorder** USB cable to your PC and/or turning the PC power on or off will not stop the recorder from functioning. You can also disconnect the **TeleCorder** USB cable from a PC and connect it to a different PC without interrupting the **TeleCorder** operation.

5.1.1 Connection:

Connect the **TeleCorder** to the USB port in your PC using the provided USB cable. The PC used for managing/playing must be equipped with an available USB port, sound card as well as speakers, and use Windows® operating system Win-2000/XP/Vista/Win-7.

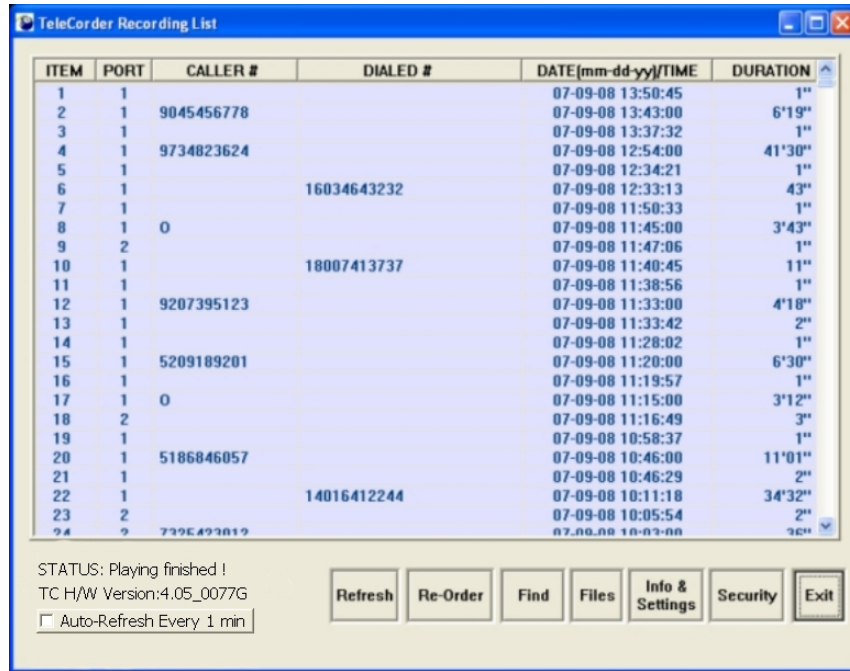
5.1.2 Using the Utility Software:

You must install the supplied utility **TeleCorder** Manager/Player software from the provided disk to your computer prior to being able to manage the recorder from the PC or playing recordings through PC control (see manual page 6, Section 2.5, **Installing Software and Connecting to a PC**). The first time that you connect your PC to your **TeleCorder**, you may be asked to install the USB device driver. This driver should have been copied to your PC during install. If not, use the CD supplied with your **TeleCorder** to install the required USB driver following the instructions displayed on your computer.

After installing the software, place a short cut icon on the desktop for easy access (if it was not automatically installed during install). Click the software icon or the short cut created during the install and the recordings will be listed in the main window (as shown in the following screen image). The listed information includes the ITEM or sequential recording number, the PORT that was the source of the recording, CALLER ID NUMBER (if available when the recording was made) or DIALED NUMBER (if available when the recording was made), DATE and TIME the recording started, and the DURATION of each recording in minutes and seconds. All records are listed in the reverse order so that the most recent recording is indexed as item number 1.

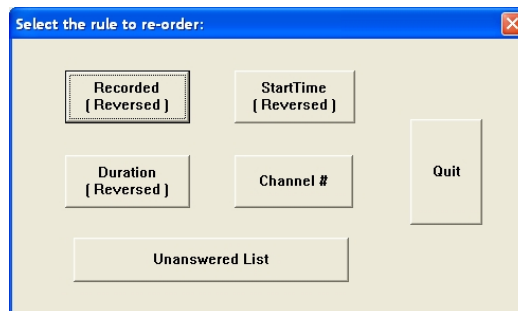


You can drag the slider bar on the right side of the display window to view the un-displayed part of the list. On the lower part of the form, there are buttons for Refresh, Re-Order, Find, Files, Info & Settings, Security (Lock/Unlock), and Exit.



The buttons provide the following functions:

- 5.1.3 Refresh:** Refresh the list to display the latest recordings in the **TeleCorder** at any time. There is also a check box for “Auto-Refresh every 1 minute” (see 4.2. if via LAN).
- 5.1.4 Re-Order:** User can select one of the following ordering rules to re-order the list.
1. Recorded – provides a list based on the time recordings ended.
 2. Start Time – provides a list based on the time recordings started.
 3. Record Duration – provides a list based on the length of recordings.
 4. Channel Number – provides a list based on the channel number.
 5. Un-answered List – provides a list of calls on phone lines that were not answered.
(Note: Un-answered Listing is not supported with TCwL-2F & TCwL-4F)
 6. Quit – exits the re-order window.

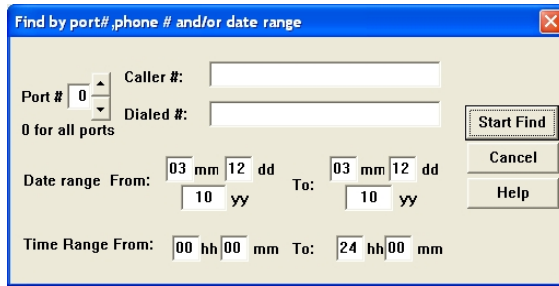


5.1.5 Find: You can search the records using a specific port/channel number, caller number, dialed number, and/or within a date and time range that you input.

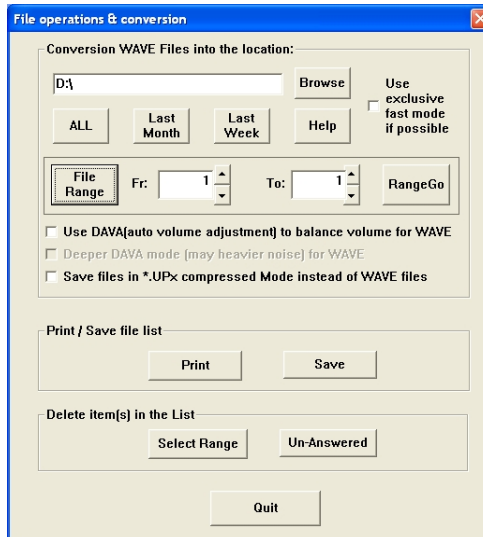
In the dialogue box, you can enter search conditions such as date range, digits from a phone number such as 010, 6256 etc. The searched results will display on the screen after you select “Start Search”.

You may also enter only a start and stop date range to display a list of recorded items that took place during the date range you entered.

The recorded items, after a search, can be played or used for further searching and for making Wave files in a batch job. Refer to the File Copy for more details.



5.1.6 Files: This button provides the following functions for the displayed files. Click “File range” for access to a select range of files that are to be saved to PC.



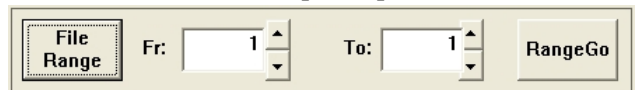
5.1.7 Conversion of Recordings to WAVE or .UPx (TeleCorder) Files and Saving to PC

Wave Files are a widely used and supported multimedia File Format for the PC and other computer systems. Since the **TeleCorder** uses a unique format for saving the recordings in digital form, digitally converting them is a better way to exchange information with other systems that do not have **TeleCorder** software. You can use your PC to send audio recordings via e-mails or make backup CDs without worrying that others may not be able to play them. .UPx files are stored in the **TeleCorder** format.

There is an option to save individual recordings when they are selected for playback (select the button with red dot “●” from playback menu). Use the **Browse** button to select the folder on your PC hard drive where you wish to save the copies of the recordings.

These buttons provide the following functions:

- **All** — Copy all of the records listed in the form, including both the ones displayed and the ones not displayed. This button would be used to copy all recordings retrieved by a search.
- **Last Month** — The software will search again from all of the records in the **TeleCorder** within the 1st and 31st of last month, then perform a batch job to generate the wave files. This function is specially designed for users to make monthly backups.
- **Last Week** — The software will search again from all of the records in the **TeleCorder** within the last week, and then it will do a batch job to generate the wave files.
- **Help** — Produces a window with more detailed information about converting to wave files.
- **Use exclusive fast mode if possible** — Use this button to speed up the file conversion.
- **File Range** — Use this button to select a range of files that will be converted to wave files from the list of calls. For example, files numbered between 1 and 100. Select **RangeGo** button to see details on file conversion and save process prior to selecting **OK** to start the process.



All the generated files will be placed in the file folder you select in the window left of the **Browse** button. After the files have been converted and saved to your PC, the list of calls on the

TeleCorder Recording List will show only those files and needs to be refreshed to show all calls.

Each file refers to a unique record. The name of each file contains date and time of the call, caller or dialed number such as File **P2 10-26-10 09=11=10 DIAL TO 18609280377.WAV** (recording made on **TeleCorder** Port 2 on October 26th, 2010 at 09:11:10, call was outgoing and dialed to 1-860-928-0377). The files are suffixed with “.Wav”. You can change the file names as required, but you should not change the suffix unless there are special requirements.

Volume Balance Setting (DAVA): Digital Automatic Volume Adjustment capabilities. This is done in software, not hardware. If the volume levels of the 2 sides of a conversation are different, or if the line quality is not well adjusted, the Digital Automatic Volume Adjustment (**DAVA**) function will amplify the lower or far side to more closely match the level of the stronger or near side of a recorded conversation during playback. Since background noise will also be amplified together with the sound, there will be a compromise to permit weak voices to be played at higher levels without raising background noise levels to objectionable levels. There are 2 possible settings:

USE DAVA (auto volume adjustment) for Volume Balance: This setting is normally used to enable **DAVA** when converting single files or batches of files to wave files. It provides a medium amount of boost for weak audio.

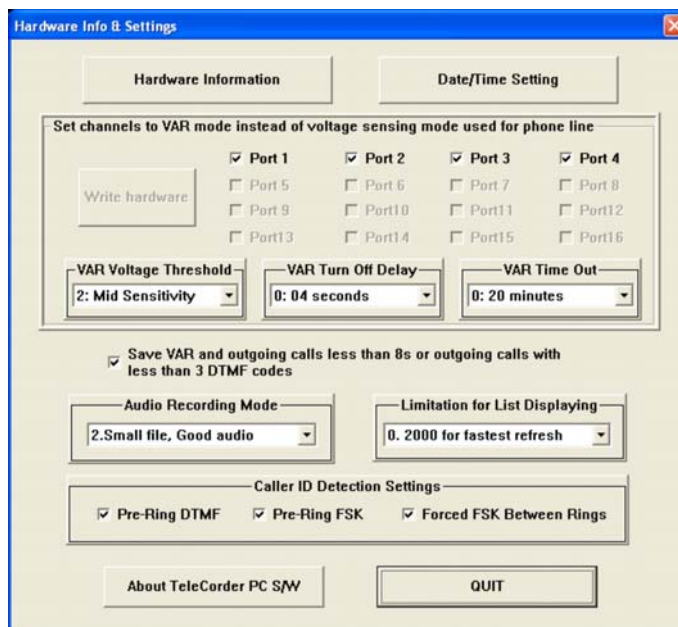
DEEPER DAVA Mode (may have more noise): This setting provides a higher level of boost to weak audio but may also increase weak background noise levels.

5.1.8 Print and Save the List of Records: The displayed list on the screen can be printed or saved into a “.txt” file. No matter how the call list is re-ordered, the searched and sorted list can be printed.

5.1.9 Delete Recordings: The recorded calls can be selectively or entirely deleted. To avoid unauthorized deletion, the password must be entered before deleting recordings. If no password has been set, you will need the master password that was supplied with your **TeleCorder**. Options are to delete the most recent recording, all recordings, or a selected range of recordings. Unanswered is not supported with TCwL-2F & TCwL-4F recorders.

From Delete Item(s) box click on **Select Range** button and follow screen messages to select which recordings you wish to delete from the recorder’s hard drive. After selecting which recordings to delete, you will be provided with an option to “**Confirm: Files are deleted as desired?**”. Follow on screen instructions to recover the recordings as needed. If file recovery is selected, recovery will take place when the **TeleCorder** software is closed and re-opened. Recordings made after selecting recovery and re-opening the software will be permanently lost.

5.1.10 Hardware: From the **Info & Settings** button you can access all of the recorder’s hardware and information settings:



5.1.11 Hardware Information: From this sub-button you will gain information about the **TeleCorder** including version number, capacity, media's usage, recorded call items, deleted call items, etc.

5.1.12 Date/Time Setting: From this sub-button you can read and set the real time clock in the recorder.

5.1.13 Set Channels to VAR Mode Instead of Voltage Sensing Mode used for Recording from Phone Lines: Each channel (Port) in the recorder can be set to start and stop recording using either audio activation (VAR) or voltage sensing. Channels showing a check mark in the boxes labeled **Port 1**, **Port 2**, **Port 3**, or **Port 4**, are set for VAR recording. Channels with no checkmark indicate they are set for phone line recording. For any channel you want to start/stop recording using the phone line voltage sensing mode, click on the box for that channel to remove the check mark, then click the **Write Hardware** button to confirm any changes.

5.1.14 VAR Voltage Threshold: Set the threshold level to match the audio level on your audio source.

L0: Extra Sensitive, suitable for weak audio sources with low background noise level: (for example, with weak earphone or line-out recording).

L1: High Sensitivity, suitable for normal line level audio sources with low background noise levels: (normal phone handset earpiece audio or weak speaker of radio).

L2: Mid Sensitivity, suitable for higher than normal audio levels and/or higher background noise levels: (for recording from a noisy phone line when voltage sensing cannot be used due to non-standard voltages or with normal speaker audio from a radio).

L3: Low Sensitivity, suitable for very high audio levels, and high background noise levels. Recording may stop if audio levels are too weak: (phone recording with non-standard and very noisy DC voltages, or extra loud radio audio).

After making changes, click the button labeled **Write Hardware** to confirm any changes. You may be asked to quit the program and try again. You may also need to unplug and re-connect the **TeleCorder** power to successfully change the **TeleCorder** operating parameters.

5.1.15 VAR Turn Off Delay: If any channels have VAR selected for recording start/stop, select one of the turn off delay options (**VAR Turn Off Delay**): 4, 12, 32 or 100 seconds. This setting will help to prevent recordings from ending during quiet periods. Click the **Write Hardware** button to confirm any changes.

5.1.16 VAR Time Out: If any channels have VAR selected for start/stop, set the timeout to one of the four choices: 20, 40, 60 or 80 minutes. This setting will limit the maximum length of a recording for easier management of long conversations or for when recording from broadcast radio where pauses may not be long enough to separate individual recordings using VAR for start/stop. If a recording reaches the maximum length of time that you select for **VAR Time Out**, that recording will end and a new recording on that channel will begin. Click the **Write Hardware** button to confirm any changes.

5.1.17 Save VAR and Outgoing Calls Less than 8s or Outgoing Calls with Less than 3 DTMF Codes: Click on this option to place a check mark in its box if you want to save recordings that are less than 8 seconds long. If this box is not checked, VAR recordings shorter than 8 seconds, and outgoing telephone calls (using voltage sensing for start/stop) with less than 3 DTMF digits, will not be saved.

This setting is normally used if external noise causes frequent and unwanted false audio activated recordings, or if telephone line testing produces short off-hook conditions that are not associated with actual phone line usage. It is normal to record all activity on the monitored circuits. Use care when setting to delete short recordings.

5.1.18 Audio Recording Mode: From this sub-button you can read or set the quality of recordings.

Mode 0 --- Large file, Good audio.
8bit linear PCM mode, 28.80 MB/hour

Mode 1 --- Tiny file, Poor audio.
2bit ADPCM mode, 7.20 MB/hour

Mode 2 --- Small file, Good audio.
3bit ADPCM mode. Default mode set from factory, 10.84 MB/hour

Mode 3 --- Large file, Best audio.
8bit nonlinear PCM mode, 28.80 MB/hour

5.1.19 Limitation for List Displaying: From this sub-button, you can select the number of recordings that will be listed on the PC to speed up the list refresh process. The default setting is 2,000. This setting will cause your PC to display the most recent 2,000 recordings after a refresh. You can select a different number, such as 10,000, 32,768 or 65,536. This selection is saved in software, not as a hardware setting and will reset to 2,000 if the software is closed and reopened.

5.1.20 Caller ID Detection Settings: From this sub-button you can set (turn on/off) the caller ID detection features.

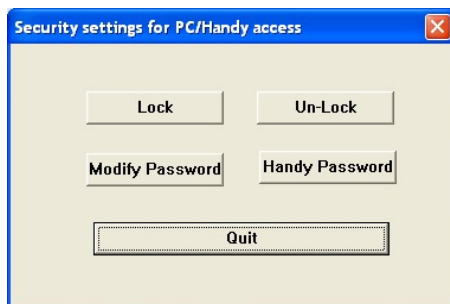
Pre-Ring DTMF Detection: If the local caller ID mode is DTMF and sent before the ring, you must turn this feature on. Otherwise, if erroneous caller numbers are sometimes received, you should turn this feature off.

Pre-Ring FSK Detection: If the local caller ID mode is FSK and sent before the ring, you must turn this feature on. Otherwise, if erroneous caller numbers are sometimes received, you should turn this feature off.

Forced FSK Between Rings: If your caller ID signaling is FSK and sent between the rings, you must turn this feature on. This is the normal setting for North America.

5.1.21 About TeleCorder PC Software: From this sub-button, you can view information about the software supplied with the TCwL-2F and TCwL-4F recorders.

5.1.22 QUIT: From this sub-button, you can **Quit** or **Exit the Hardware Info & Settings** window.



5.1.23 Lock/Unlock: This button provides access to security settings for the recorder.

Lock: After the recorder is locked, it will ask the user to input a password each time a user tries to access the recorder. A password must be entered to use this function.

Unlock: To unlock the recorder so that a password is not needed, the password must be entered.

5.1.24 Modify Password: The recorder comes with a factory-set password, which is in the machine code that is set by its hardware and cannot be changed. This password is written on a sheet that comes with the recorder and will be an effective password forever (keep this password in a secure place). The **TeleCorder** also allows you to set a second password that can be easier to remember. Use the Modify Password button to set a second password of 6-8 characters. You must enter the factory-set password prior to being given the opportunity to add a second password. After the second password has been set, it will have the same effect as the first password. The new password is also stored in the hardware of the recorder so that it will work even if the recorder is connected to, and used with, another PC. Use Unlock to disable the second password.

5.1.25 Built-in Keypad & USB Passwords: The built-in keypad uses a 4 digit password that is stored in the recorder hardware. Although this password can be modified using the keypad, this button provides a second way to set the keypad password. Set it to "0000" and you will no longer be asked for a password.

The built-in keypad password can also be set or changed via USB connection from a PC. Open the **TeleCorder** SW and select the **SECURITY** button at the bottom of the screen. You will have option buttons for **LOCK**, **UNLOCK**, **MODIFY PASSWORD** (PC) and **HANDY PASSWORD**. To lock the

unit from HANDY PLAYER (display and keypad) access only, select the **HANDY PASSWORD** button and enter the supplied Master Password when prompted. You will then be prompted to select a 1 to 4 digit numeric password (0001 to 9999). The unit is now locked and will require the Handy Password when accessed via the HANDY PLAYER. Power the unit off and on to lock your settings to memory.

If the HANDY PLAYER password is forgotten, the only way to reset it is via the USB and **TeleCorder** SW using the second Modified password or the Master Password.

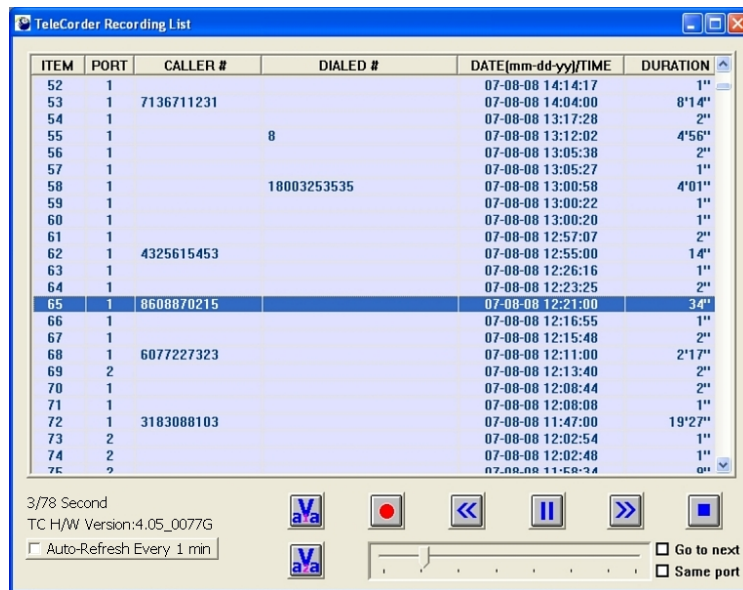
Locking the Unit from Access via the USB Only: Open the **TeleCorder** SW and select the **SECURITY** button at the bottom of the screen. You will have option buttons for **LOCK**, **UNLOCK**, **MODIFY PASSWORD** (PC) and **HANDY PASSWORD**. To lock the unit from USB access only using the supplied MASTER PASSWORD, select the **LOCK** button and enter the supplied Master Password when prompted. The unit is now locked and will require the Master Password when the SW is opened.

If you want to select a password of your own to use, select the **MODIFY PASSWORD** button and enter the supplied Master Password. When prompted, enter a 6-8 character alpha-numeric password you want, select OK and exit the SW. Power the unit off and on to lock your settings to memory.

If you want to remove password protection via USB, select the UNLOCK button and enter either the supplied Master Password or the second Modified password that you created.

With the unit locked via the USB connection, users can still have access to play a call via the HANDY PLAYER (display and keypad) at the unit. Settings can also be changed from the HANDY PLAYER, such as time & date, input type, language etc. They cannot however delete calls from the HDD. **Remember, whenever settings are modified, the TC needs to be powered off and back on to lock them into memory and start using the new settings!**

5.1.26 Play Recordings from the List and Copy to PC: To play a recording using your computers media player and speakers, select a file using your PC mouse and click on it. Large files may take a few seconds prior to opening. When playing recordings, buttons in the lower part of the screen will be swapped to a new set of buttons that are used to control various playback functions, as shown in the following image. If it is a long recording, the playback function buttons will not show until the recording has been completely transferred from **TeleCorder** to the PC.



The functions of these buttons are:

aVa1 & aVa2: The **aVa** buttons or “digital audio volume adjustments” are used to equalize unbalanced audio. While it will attempt to balance a call when there is difference in audio levels, it may not be able to bring extremely weak audio up enough to balance it. These volume adjustments only work in playback. Click the **aVa1** button and the recorded audio will be processed and played from the beginning with a medium level of Automatic Volume Adjustment. Click the **aVa2** button and the recorded audio will be

processed and played from the beginning with a higher level of Automatic Volume Adjustment. You may also drag the horizontal slider bar to move the playback start point.

Record ●: The record button is used to convert the current highlighted call or call you are playing to a wave file and save it to your PC. These .wav files can be burned to a CD and played in most players. The recordings will be saved by default with a file name containing port number, date and time of the call, and caller ID or dialed numbers. There will be an option to rename the file when converting to a wave file.



Fast Reverse <<: Skips backward to replay a portion of a call.

Pause II: Used to temporarily stop a recording with the ability to resume listening where stopped.

Fast Forward >>: Skips forward to find a location in a call.

Stop ■: Stops the recording and returns to the beginning of the call.

Go to next: When a check is placed in the **Go to next** box, after a call has finished playing it will automatically go to the next call and start playing it (useful when playing radio files with receive and transmit audio in separate files).

Same port: When a check is placed in the **Same port** box, and you also select **Go to next**, it will play only calls on the same port as the selected recording (useful when playing radio files when all conversations are on the same port/channel).

Select **Stop ■** to end playback or to play another recording.

The software does not have to be open on a PC for the recorder to function as a recorder. The PC software is only used for setup via USB, and via USB to playback recorded conversations, search the recordings, and, copy the recordings from the hard drive inside of the recorder to a PC.

5.1.27 Monitoring Port Activity & Listening over LAN: If the PC is accessing the recorder over the LAN, there will be a button in the lower left corner to select **Port Monitoring & listening over LAN**.

This feature can only be used by one PC at a time. When selected, the bottom of the **TeleCorder** recording list window will change to show which ports are active. If you click on an active port, an image of headphones will show and you can listen to the conversation being recorded (Image below with ports 1 & 3 active and port 3 being monitored).





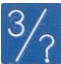








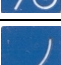
5.2 Playing Recordings Using the Built-in Keypad






Numbers on the keypad buttons are for entering a password and other playback functions.

The keypad buttons are also used for setting up most **TeleCorder** operating parameters, selecting recordings to play, controlling playback, turning display backlight On/Off, adjusting internal speaker volume (two levels), and displaying the help menu.

You can listen to the recordings by using either the small speaker that is built into your **TeleCorder**, or, by connecting an external speaker or headset to the 3.5mm monaural mini-jack that is located on the left side of the recorder near its built-in speaker. Browsing and playback using the built-in keypad is limited to the most recent 2000 recordings.

HandyPlayer keypad buttons provide the following functions:	
	Increase or decrease the intensity of the LCD backlight
	Jump down 3 in list of recordings when browsing Advance selected item in set-up and search modes
	No function
	Down 1 when browsing the list of recordings, backward when playing or programming
	View list of recordings, pause/start when playing, press twice to enter search mode
	Up 1 when browsing the list of recordings, forward when playing or programming
	View list of recordings
	Jump up 3 in list of recordings when browsing Decrease selected item in set-up and search modes
	View list of recordings
	Reset. stop playing recordings, return to start-up screen
	Volume adjustment (two levels) when playing. Also used with settings state (0+Enter) and to enter live listening monitor state (0+Reset) when not playing
	Enter, Start/Stop during playback, accept when setting or entering password

5.2.1 Description of the Displayed Symbols

Depress either   or  keys to view the list of recordings with the most recent recording selected for playing. Use the **2** or **8** keys to advance the list up or down three recordings at a time. Use the **4** or **6** keys to advance the list up or down one recording at a time. Depress the enter key to play the recording.

```
001 P1 10-18 13:44 0111
#8609280377
>#8609286477
Start of list.
```

Top line shows the index number, port/channel, date, time, and length of recording in seconds.

001 P1 10-18 13:44 0111

Middle line shows the current selection including any caller ID or touchtone digits.

#8609280377 (# indicates outgoing call)

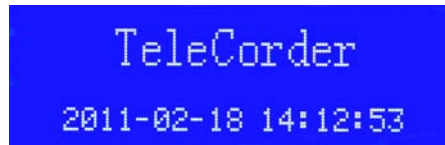
▶#8609286477 (■ indicates an incoming call)

5.2.2 Operational Procedures


Step 1: Make sure the **TeleCorder** recorder is powered on.


Step 2: The start-up message should be displayed on the LCD.

Step 3: If no function keys are depressed for 10 seconds, the LCD will display the date/time message.

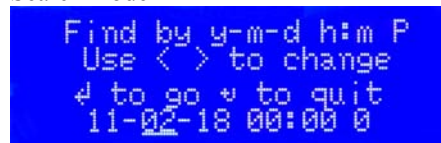


If function keys **5**, **7**, or **9** are pressed once, the player will show the list of recordings for browsing or ask for a password prior to showing the list of recordings. If the **0** key is pressed on the HandyPlayer when playing a recording, it will reduce or increase the playback volume. If the **1** key is pressed, it will increase or decrease the LCD backlight.

If there are no recordings in the recorder, it will display an empty item with zero length. Press the Reset button (bottom left ) to return to the date/time message.

Pressing the **5** key twice will enter a search mode. Use function keys to enter date (MM-DD), time (HH-MM), and Port (P00 for all ports, P01 for only Port 1, etc). Press enter key (bottom right ) to search and display the number of found calls. Press the enter key again to start playing the oldest of the found calls, depress again to skip to newer recordings, or wait for it to end and the next recording will play. Depress the **5** key to pause. Use **2**, **4**, **6**, and **8** keys to jump forward or back when a recording is being played.

Search mode



Most users find that it is more convenient to setup the recorder, access information about the recordings, and play the recordings using a PC connected to the recorder via the supplied USB or LAN cables. The PC will have larger more intuitive display windows and the recordings will have better sound quality when using the larger speakers on the PC. The PC connection will also permit copying the recordings to the PC for archiving and emailing. The HandyPlayer on the front of the recorder can be used when access from a PC is not available.

6. Guarantee & Liability

Your **TeleCorder** has a 12-month limited manufacturer guarantee. The guarantee is effective only for normal use. It is not valid under exceptional environmental or operational conditions, such as extreme temperatures or humidity levels, nor in the event of a lightning strike or similar damage from excessive voltages on connections. The guarantee is not valid if it has not been handled properly, for example, if it has been damaged by dropping. To qualify for the guarantee, contact your supplier or the manufacturer. The guarantee does not cover costs of sending to or from the supplier or manufacturer, and does not cover any expenses resulting from the failure of **TeleCorder**.

Correct functioning of the **TeleCorder** cannot be guaranteed under all conditions. The **TeleCorder** supplier and manufacturer cannot and will not accept any liability for loss of information or other damages due to the use or misuse of the **TeleCorder**. Suppliers and the manufacturer are not a source of official interpretation of laws and shall not be construed as a source for making decisions.

7. Specifications (subject to change without notice)

Number of Channels: Two with TCwL-2F, four with TCwL-4F

Capacity (hours): 7,200 with TCwL-2F and TCwL-4F, when set for (2) small file – good audio

Security: Password (3): Master, PC, and HandyPlayer

Digital Encoding: Voice quality good, A-law PCM mode (25% as specified, 28.80 MB/hour)

Voice quality OK, G.726 2bit ADPCM mode (as specified, 7.20 MB/hour)

Voice quality very good, G.726 3bit ADPCM mode, (75% as specified, 10.84 MB/hr.)

Voice quality excellent, 8bit linear PCM mode (33% as specified, 28.80 MB/hour)

Frequency Response: 340-3,400Hz, +/- 3db

Sampling Rate: 8,000Hz

Recording Trigger: Off-Hook (phone line voltage sensing for start/stop, <20vDC>) or VOX/VAR
(audio activated for start/stop – 0.8Vpp, 0.4Vpp, 0.2Vpp, or 0.1Vpp)

Line Impedance AC: >10k ohm

Line Impedance DC: >10M ohm

Ringer Equivalence: AC-REN – 0.6B

Caller ID: FSK/DTMF

Dialed Number: DTMF

Internal Storage: Hard Drive

Storage Limits: 65,536 files, 7,200 hours - with 80 gig hard drive (s/n K-365251 and higher).

Automatic overwriting of oldest files when limits are reached.

Display: Built-in 2-1/8" x 3/4" backlit LCD, or PC with included USB or LAN cable and software

Size: 6-5/8" wide x 8-1/2" deep x 2-3/8" high, 170mm x 220mm x 55mm, (not including cables)

Weight: 3.7 lbs., 1.6kg (not including cables and external power supply)

Power Requirements: +5 Volts DC from supplied external 100-120V AC power adapter, 5W

Approvals: FCC (TeleCorder Model F4, US:BCXRT07BTCwL-F4B4), UL, CE

Guarantee: Twelve month, limited

Manufactured by: Beijing ChangXing Co., Ltd., China

Distributed in U.S.A. by: Omnicron Electronics, Putnam, CT U.S.A.

8. Contact Information for Support and Service

Manufactured in China by: Beijing ChangXing., Co., Ltd., www.telecorder.com

Distributed in USA by: Omnicron Electronics
581 Liberty Highway
Putnam, CT 06260

E-Mail: support@omnicronelectronics.com Web: www.omnicronelectronics.com

Phone: (860) 928-0377

Fax: (860) 928-6477

9. Popular Accessories

Contact your **TeleCorder** representative if you have questions or for assistance in selecting the proper cables or adapters for your application. Some of these accessories are shown below.

TSA-3LM — Telephone Handset Supervisory Adapter

The TSA-3LM is the easiest way to monitor conversations on individual telephones. It can be used to provide a simple method of connecting the recorder to telephone handset or handset audio.

It can be used with most telephone styles that have a standard modular handset or headset jack (RJ-10, 4P4C). Simply connect one end of the cable in series with the telephone handset or headset cord and connect the other end to the recorder. The TSA-3LM has a 25' output cable that can be extended with the T25-EXT or other suitable phone line extension.



TSA-SLM — Telephone Handset Supervisory Adapter, with ON/OFF Switch

The TSA-SLM provides all of the functions and features of the TSA-3LM with the addition of an on/off switch that is used to disconnect the telephone audio from your recorder when you do not want your conversation recorded. The TSA-SLM has a 25' output cable that can be extended with the T25-EXT.



TSA-2A1 — Telephone Handset Supervisory Adapter, with Active Audio Mixer

Used to provide a method of connecting recorders to the handset (or headset) circuit of a phone that does not have normal side-tone (no mouthpiece audio is present on the earpiece of the phone). It can be used with telephone styles that have a standard modular handset or headset jack (4P4C). If the phone you wish to monitor has side-tone, as with most business phones, you should use the less expensive TSA-3LM adapter.



RSA-U5 — Two-way Radio Adapter with Active Amplifiers and Optically Isolated PTT Sensing

Similar to the RSA-M3 and RSA-M4, the RSA-U5 has screwdriver adjustable amplifiers to boost weak receiver and transmitter audio levels and a low power optically sensing circuit to mute microphone audio when the radio is not transmitting. Most two-way radio applications do not require an adapter to mix receiver and transmitter audio. Some radios have audio levels that do not require an active amplifier and the Omnicron item number RSA-M3 or RSA-M4 could be sufficient. Connections to radios that need to be made inside of the radio should only be done by a qualified technician.



MOD-SC — Converts Modular Phone Cable to 3.5mm Mini-plug

The MOD-SC is used when you have a cable with standard RJ-11 single-line telephone type plug that you need to connect to audio from equipment with 3.5mm mini-plug jack. It has an RJ-11 jack on one end and a 3.5mm monaural mini-plug on the other end.

The MOD-SC is typically used to connect modular telephone line cables provided with digital audio recorders to the audio output of a radio receiver.



10. Notes

1. The **TCwL-2F** and **TCwL-4F** recorders come with a factory-set master password, which is in the machine code that is set by its hardware. This password is written on a sheet that comes with the recorder and will be an effective password forever (keep this password in a secure place). If you lose the master password, your **TeleCorder** may have to be returned to a factory authorized service facility to determine what the password is from its internal hardware.
2. The recording ports (channels) are set for audio activated recording by default. Depending on what you are recording, phone, phone line, radio, you may have to change the factory settings.
3. When recording from phone lines, the **VAR port** boxes should not have a check in them. The **VAR voltage threshold**, **Turn Off Delay**, and **Time Out** will have no effect on operation in this mode. All other settings are functional in this mode.
4. Recording in audio activated mode may require adjustment of the recorder to the quality of your audio source. If the audio is weak... adjusting the Voltage Threshold more sensitive or the **Turn Off Delay** a little longer will stop the chopping of files, or multiple files for a single recording. If recording continuously the opposites would apply, less sensitive and a shorter delay.
5. The **Audio Recording Mode** is set at small file good audio as default. In this mode the audio quality is good and the compression rate will give you approximately 7,200 hrs of recordings on the recorders internal HDD and the ability to view the last 65,000 calls.
6. Avoid shaking the **TeleCorder**, and keep it in an environment with moderate temperature and humidity that is suitable for electronic equipment.
7. There are no user-serviceable parts inside of the recorder. Refer servicing to qualified service personnel. If the clock does not maintain the correct time and date without external power, an internal battery may need to be replaced (Battery # CR1220).
8. Do not expose to rain or moisture.
9. If your **TeleCorder** came with software V2.42 or V2.43, it is compatible with PC running either 32 bit or 64 bit Operating Systems (OS). If you have an older **TeleCorder** that came with software V2.41 or earlier, it would have shipped with its device driver PID (Product I.D.) set for use with Windows PC running 32 bit operating systems (OS). To use the older recorders with a Windows 64 bit OS, the device driver PID setting needs to be changed from 6006 to 6001. To update the older recorder for use with 64 bit OS (Win-2000 to Win-7), install the older **TeleCorder** on a 32 bit PC and run the "**SetUsbPidForV242PackOnAllOS.exe**" file that is on the software CD supplied with the new recorder (from V2.43 CD or V2.43 software that can be download from the Omnicron web — www.omnicronelectronics.com). After the PID is changed to 6001 the recorder will be compatible with software V2.42 and V2.43 on a PC running either a 32 bit or 64 bit OS (the same as recorders supplied with V2.43). See: "**Read-me**" file on software CD or software download for additional information.

11. User Notes

Password _____

Serial No. _____

TeleCorder

Voice Logging Recorders are distributed in the U.S.A. by:



581 LIBERTY HIGHWAY ● P.O. BOX 623 ● PUTNAM, CT 06260

☎ (860) 928-0377 ● FAX (860) 928-6477

support@omnicronelectronics.com

www.omnicronelectronics.com