

SMSI EZdvr Plus Model 2013 User Manual



This End User Manual is designed to get the end user acquainted with some of the basic features of the DVR. It is not intended to be used as a setup guide. This needs to be done by a qualified installer and or service technician.

Chapter 1	Main System Screen	Page 2
Chapter 2	View Log Application (Status)	Page 4
Chapter 3	Playback Application (Search & Save)	Page 5
Chapter 4	Copy saved Video to USB Drive	Page 8

CHAPTER 1

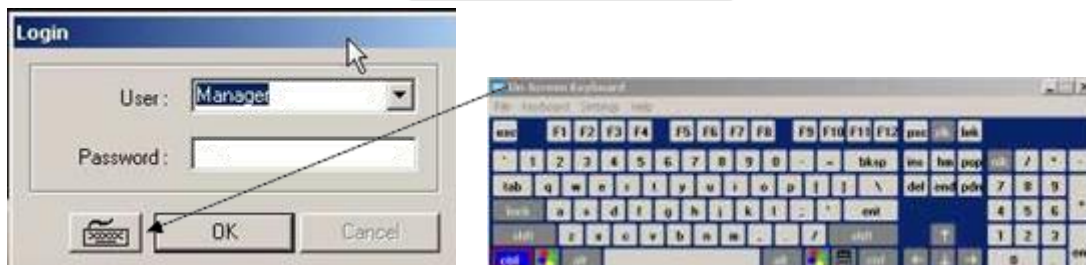
Main System Application (Control)

1.1 Startup Screen



The above screen will appear as EZDVR system starts.

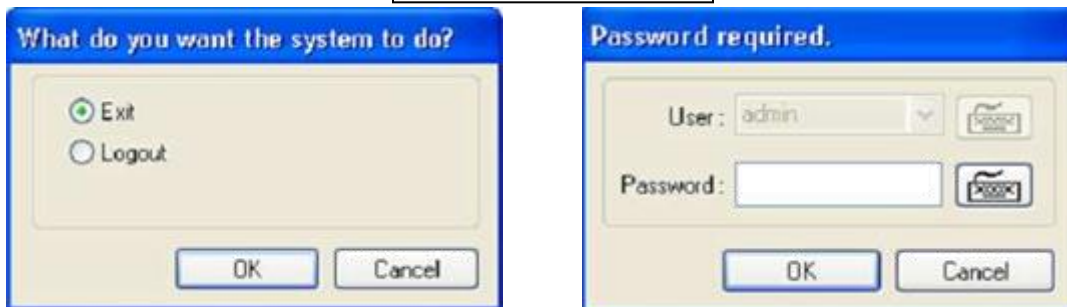
1.2 Login



The default values for User and Password are "Manager" and "no password". Click "OK" to Execute EZDVR system. To obtain "admin" password you must be a certified Installer, and Contact your distributor, certain configurations are required (Setup/User). Only "admin" and Users with appropriate authorization have access to the Setup menu.

Note: Virtual keypad is available wherever typing is required.

1.3 Exit/Logout



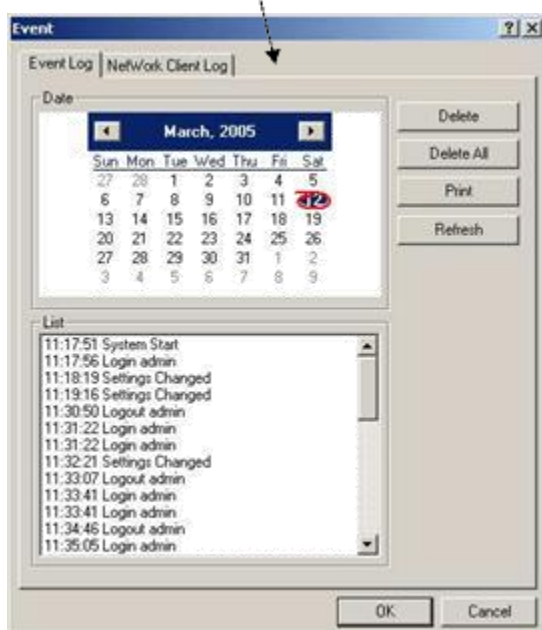
To Exit EZdvr system you must have admin privileges.

1.4 Control Screen



View Log Application (Status)

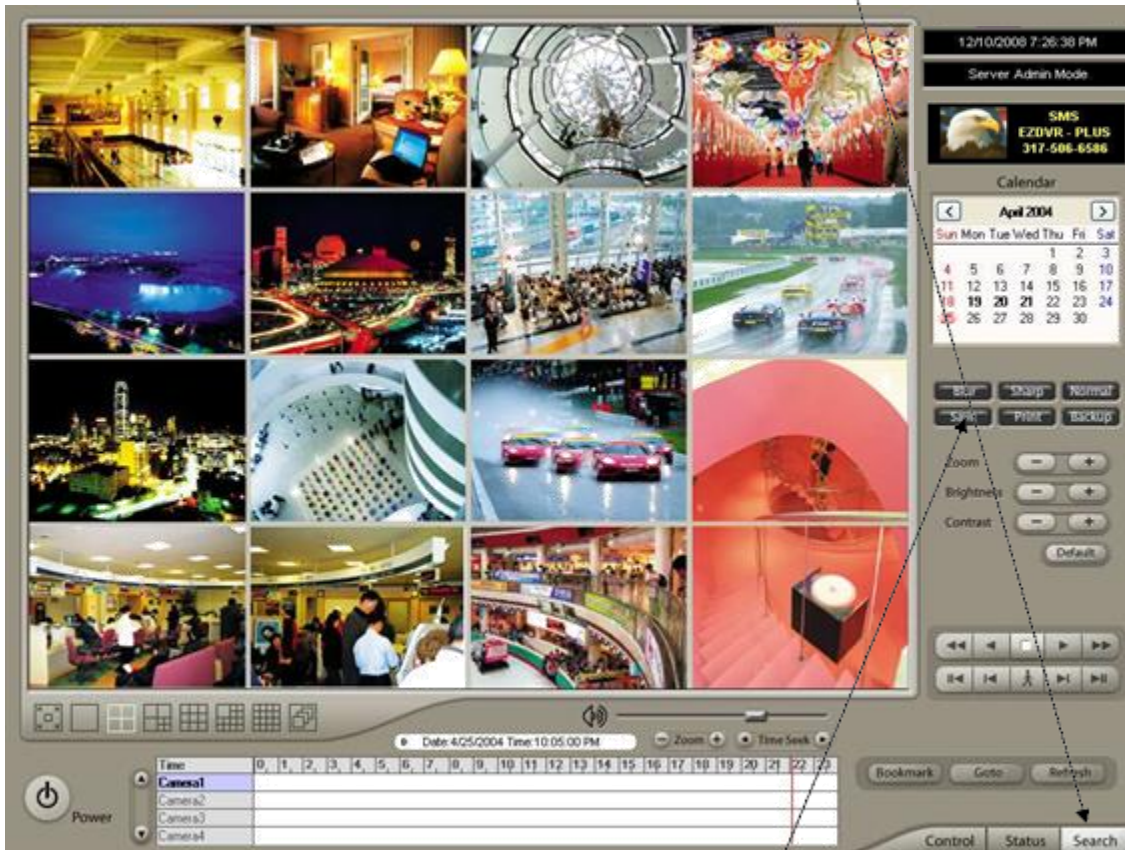
2.1 Screen Features



- * Date: All dates with events will be marked in bold numbers.
- * List: All events for a certain selected date will be shown.
- * Delete All: If clicked, all the previous records will be deleted.
- * Delete: If clicked, only the events for a certain selected date will be deleted.
- * Refresh: If clicked, events will be updated.

CHAPTER 3

Playback Application (Search)

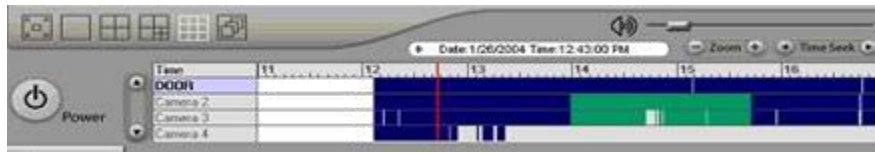


3.1 Search Features 1

Calendar: All dates with recorded data will be marked in bold numbers.
 Blur/Sharp/Normal: Buttons to adjust sharpness of image
 Zoom: Buttons to zoom in/out
 Brightness: buttons to adjust brightness
 Contrast: buttons to adjust contrast
 Default: Default for Zoom/Brightness/Contrast

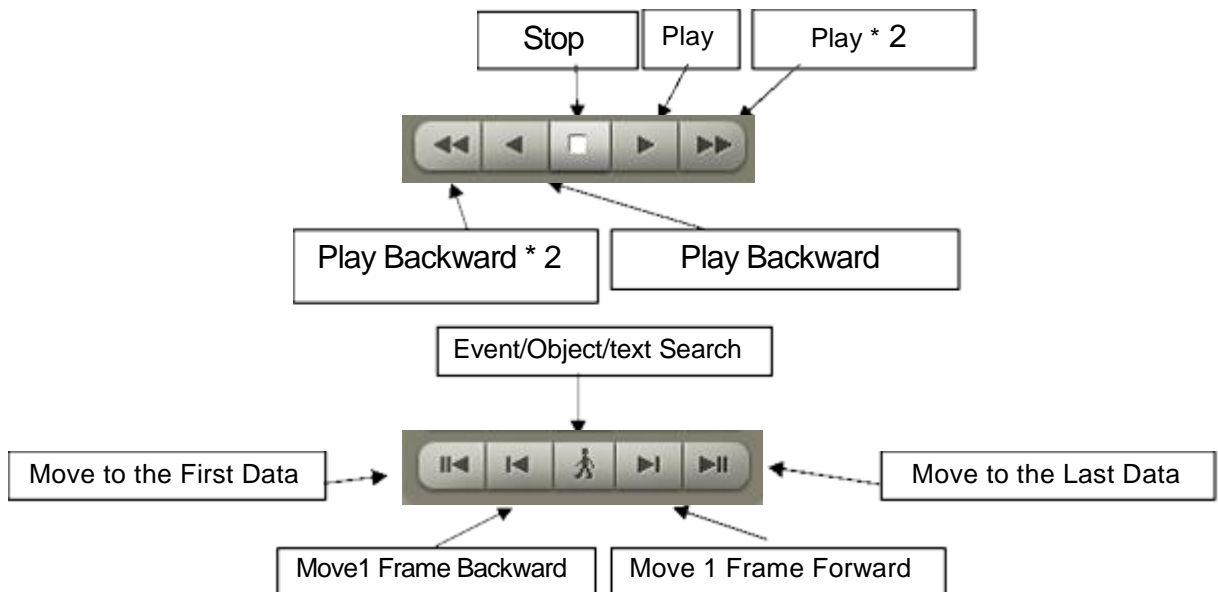
3.2 Search Features 2

3.2.1 Playback

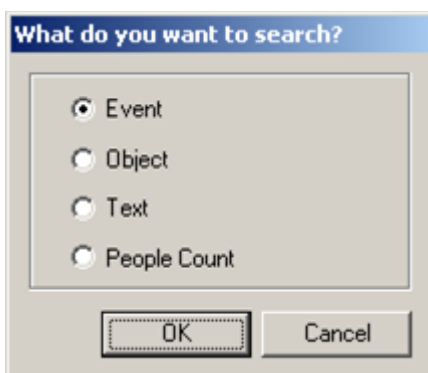


For playback, simply select date, screen mode (1, 4, 9, 16, etc.), time by one click on the time bar and click the play button. **What different colors mean on the time bar:**

1. Blue: Recorded data by sensor & motion detection
2. Purple: Recorded data by 24-hour-recording
3. White: No recorded data in all cameras
4. Gray: No recorded data for some cameras
5. Green: Blue + audio
6. Light Green: Purple + audio
7. Dark Red : Purple + recorded text data (POS)
8. Orange: Even- recorded data with recorded text data.
9. Dark Yellow : Event-recorded data + recorded text data + audio
10. Yellow : Purple + recorded text data + audio



3.2.2 Event/Object/Text /People Count Search



[Event Search]

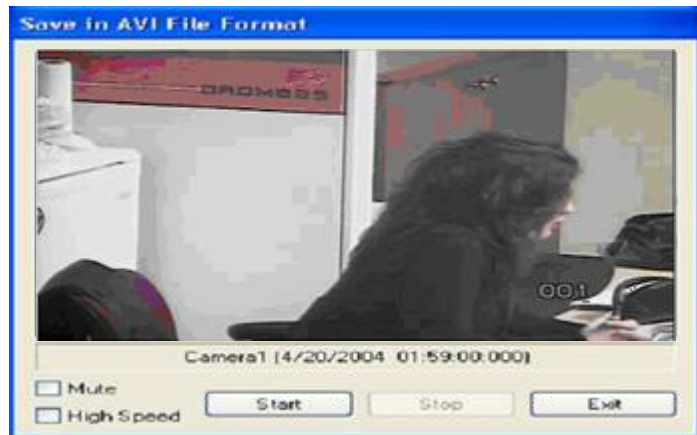
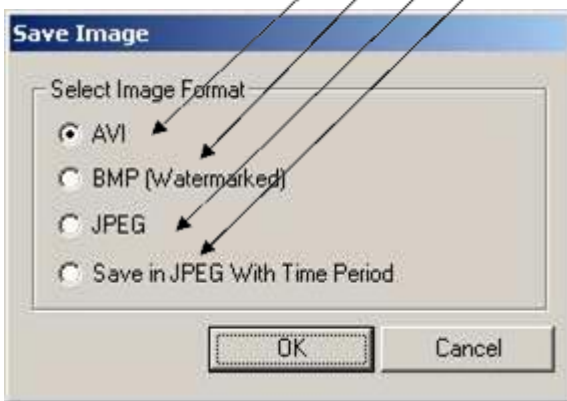
Click the Event/Object Search button and select "Event".

3.2.3 Save

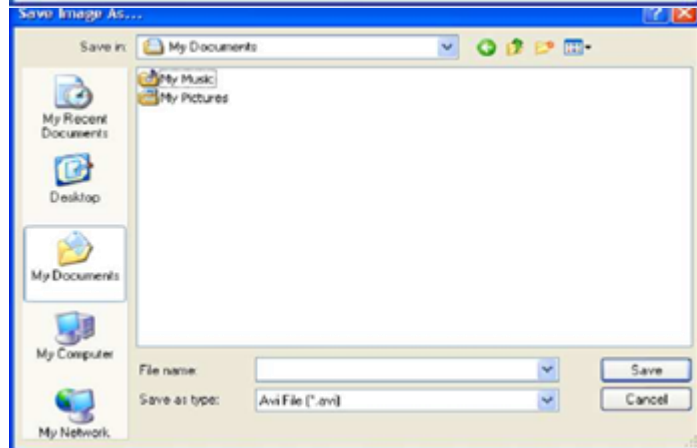


AVI: For saving motion pictures and audio
 BMP: For saving images. Watermarked images can be saved.
 JPEG: For saving regular still images. Quality is not as good as BMP but less HDD is used.
 Save in JPEG with Time Period: For scheduled save in JPEG

[Save in AVI Format]



Click "Start" to start saving and "Stop" to stop saving. Mute: Saving video only (no audio)
 High Speed: Saving in high speed. When the Save Image Window opens, **Give your video a name and save in My Documents folder for later retrieval and to copy to USB Drive.**



[Save in JPEG Format]

Click "Start" and select "JPEG" as you save images.

[Save in JPEG with Time Period]

Select time period and select channels to be saved in JPEG.

Recording to Flash Drive



Insert supplied USB Flash Drive in one of the USB ports on the front of the DVR
(if removable disk pops up close it)

Select esc button to initiate a shortcut!

Select (F9) on the keyboard and right click on saved files and select send to: Removable Disk

Remove the Flash Drive when it's done flashing.

You now have a copy of your saved data.

Shortcut Keys:

Select esc button to initiate a shortcut!

F7 to change date and time on the dvr

F9 My Documents & EZdvr Manuals

This Manual is designed for the end user to cover the basic operation and video Retrieval of the SMS EZdvr – Plus and Recording to USB Flash Drives. It is not Intended for the proper setup and programming of the DVR unit. A separate Quick Setup and Installer guide is provided, and should be used by a qualified service technician. It is imperative that the proper setup and programming be done by qualified personnel as this can affect the quality and quantity of the DVR data.

These units have been designed to give reliability and long history as well as ease of use. For other functionality and more detailed operation please email

ezdvrplus@storagemaintenance.com