

User Manual

Air Cast Speaker System



DRAGON LILY



Contents

Important Safety Instructions	2
Safety	2
Identifying the Parts	3
Main Unit	3
Smart Remote Control	4
Install Remote Control Batteries	4
Prepare the Remote Control.....	4
Replace the Remote Control Battery	4
Precautions Concerning Batteries	4
Connections	5
Connect to an External Audio Device.....	5
Connect Power.....	5
General Operation	5
Power	5
Selecting Modes	5
Turning the Bass ON/OFF.....	5
Adjust Volume Level.....	5
Mute Sound	5
Play Music Through Wi-Fi Network	6
AP Mode Configuration	6
Configure Wi-Fi Speaker Security Setting	6
Client Mode Configuration.....	7
Listen to Music from a Wi-Fi Device	8
Stream from your iPod Touch/iPhone/iPad	8
Stream from your Android Device	8
Control Play	8
Play with Bluetooth Device	9
Pair Bluetooth-enabled Devices Manually	9
Bluetooth-enabled Devices Using One Touch (NFC).....	9
Listen to Music from Bluetooth Device	10
AUX IN Operation	10
USB Operation	10
Troubleshooting	11
Specifications	11
Standard Accessories	11

Important Safety Instructions

	WARNING RISK OF ELECTRIC SHOCK DO NOT OPEN	
CAUTION: TO REDUCE THE RISK OF ELECTRIC SHOCK, DO NOT REMOVE COVER (OR BACK). NO USER-SERVICEABLE PARTS INSIDE. REFER SERVICING TO QUALIFIED SERVICE PERSONNEL.		




The lightning flash with arrowhead symbol, within an equilateral triangle, is intended to alert the user to the presence of uninsulated "dangerous voltage" within the product's enclosure that may be of sufficient magnitude as to constitute a risk of electric shock to persons.



The exclamation point within an equilateral triangle is intended to alert the user to the presence of important operating and maintenance (servicing) instructions in the literature accompanying the appliance.

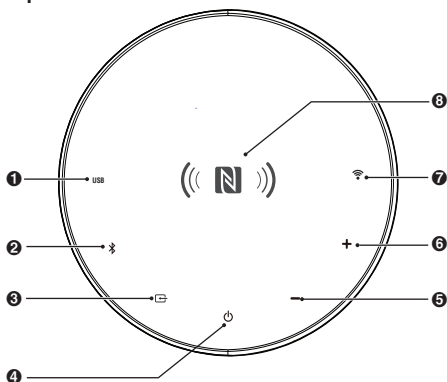
Safety

- 1 Read these instructions.
- 2 Keep these instructions.
- 3 Heed all warnings.
- 4 Follow all instructions.
- 5 Do not use this apparatus near water.
- 6 Clean only with a dry cloth.
- 7 Do not block any ventilation openings. Install in accordance with the manufacturer's instructions.
- 8 Do not install near any heat sources such as radiators, heaters, stoves, or other apparatus (including amplifiers) that produce heat.
- 9 Do not override the safety purpose of the polarized or grounding-type plug. A polarized plug has two blades - one wider than the other. A grounding plug has two blades and a third grounding prong. The wide blade or the third prong is provided for your safety. If the provided plug does not fit into your outlet, ask a qualified electrician to replace the outlet.
- 10 Protect the power cord from being walked on or pinched, particularly at plugs, convenience receptacles and at the point where it exits from the apparatus.
- 11 Only use attachments/accessories specified by the manufacturer.
- 12  Use only with a cart, stand, tripod, bracket or table specified by the manufacturer, or sold with the apparatus. When a cart is used, use caution when moving the cart/apparatus combination to avoid injury from a tip-over.
- 13 Unplug this apparatus during lightning storms or when unused for long periods of time.
- 14 Refer all servicing to qualified service personnel. Servicing is required when the apparatus has been damaged in any way, such as when the power-supply cord or the plug is damaged, liquid has been spilled or objects have fallen into the apparatus, the apparatus has been exposed to rain or moisture, does not operate normally, or has been dropped.
- 15 Do not expose this equipment to dripping or splashing and ensure that objects filled with liquids, such as vases, are never placed on the equipment.
- 16 This is CLASS II apparatus with double insulation and no protective earth is provided.
- 17 Warning: to reduce the risk of electric shock, do not expose this apparatus to moisture.
- 18 Warning: the battery (batteries or battery pack) must not be exposed to excessive heat such as sunshine, fire or the like.
- 19 The mains plug is used as the disconnect device. The disconnect device must remain readily operable.
- 20 Unplug this apparatus when the apparatus has been damaged. Refer all servicing to a professional service centre.

Identifying the Parts

Main Unit:

Top View



1 USB

- Select USB function.
- In USB mode, start or pause playback

2 Bluetooth

- Select Bluetooth function.
- In Bluetooth mode, start or pause playback (press the button once).
- In Bluetooth mode, enable Bluetooth Pairing mode (press and hold the button).

3 AUX

Select AUX function.

4 Power

Press this button to turn on or switch to Eco power standby mode.

5 VOL -

Decrease the volume level.

6 VOL +

Increase the volume level.

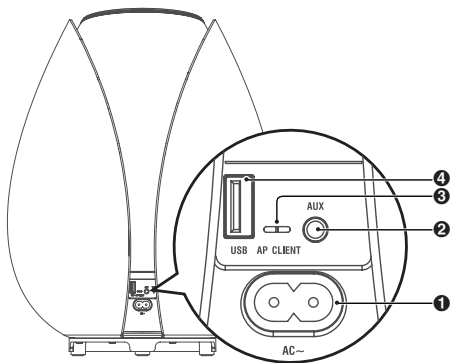
7 Wi-Fi

- Select Wi-Fi function.
- Press and hold this button for 5 seconds to restore all Wi-Fi settings to default.

8 NFC

- NFC sensing area.

Rear View



1 AC~

Power cord socket.

2 AUX IN Socket

Connect to an external audio device.

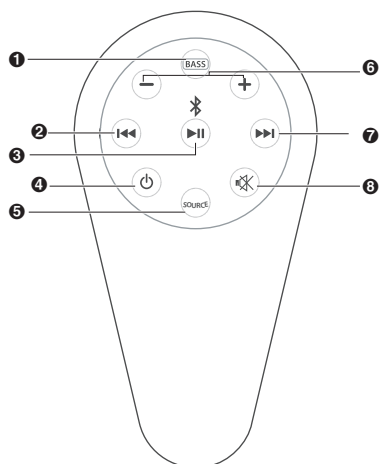
3 AP/CLIENT

In Wi-Fi function, switch Wi-Fi configuration between AP mode and Client mode.

4 USB Socket

Connect to an external audio device.

Smart Remote Control



1 BASS

- Select bass boost level: BASS ON and OFF

2 ⏮

- Skip to previous track.

3 ▶||/⏸

- In Bluetooth/USB mode, start or pause playback (press the button once).
- In Bluetooth mode, pair with Bluetooth enabled device (press and hold the button).

4 ⏻

- Press this button to turn on or switch to ECO power standby mode.

5 SOURCE

- Select a function.

6 VOL+/VOL-

- Increase or decrease volume level.

7 ▶▶

- Skip to next track.

8 🔇

- Mute or resume sound of the player.

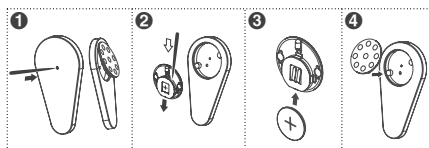
Install Remote Control Batteries

Prepare the Remote Control

The provided Remote Control allows the unit to be operated from a distance.

- Even if the Remote Control is operated within the effective range (6m), remote control operation may be impossible if there are any obstacles between the unit and the remote control.
- If the Remote Control is operated near other products which generate infrared rays, or if other remote control devices using infrared rays are used near the unit, it may operate incorrectly. Conversely, the other products may operate incorrectly.

Replace the Remote Control Battery



- 1 Use a needle to push the battery forward through the hole on the rear of the remote control.
- 2 Use a needle to remove the old battery.
- 3 Place a new CR2025 battery with correct polarity (+/-) as indicated.
- 4 Install the battery into the remote control.
⚠ WARNING: DO NOT INGEST BATTERY, CHEMICAL BURN HAZARD

Precautions Concerning Batteries

- When the Remote Control is not to be used for a long time (more than a month), remove the battery from the Remote Control to prevent it from leaking.
- If the batteries leak, wipe away the leakage inside the battery compartment and replace the batteries with new ones.
- Do not use any batteries other than those specified.
- Do not heat or disassemble batteries. Never throw them in fire or water.
- Do not carry or store batteries with other metallic objects as doing so could cause batteries to short circuit, leak or explode.
- Never recharge a battery unless it is confirmed to be a rechargeable type.

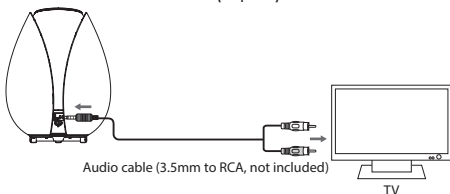
Connections

Connect to an External Audio Device

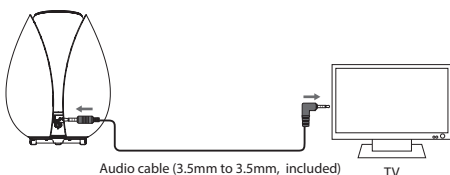
You can listen to an external audio device through this unit.

Using AUX IN Socket

Use an audio cable (3.5mm to RCA) to connect the TV's audio output sockets to the soundbar's AUX (input) socket.



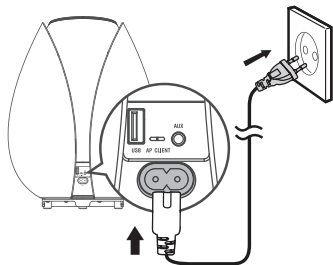
Use an audio cable (3.5mm to 3.5mm) to connect the TV's headphone socket to the soundbar's AUX (input) socket.



Connect Power

Caution:

- Risk of product damage! Ensure that the power supply voltage corresponds to the voltage printed on the back or the underside of the unit.
- Before connecting the AC power cord, ensure you have completed all other connections.



Connect the power cord to the wall outlet.

General Operation

Power

You can use all the functions on the panel of the unit or the remote control after connecting to the power supply (called Standby mode).

Turning the System On

Press **⏻** button to turn the system on from Standby mode.

Note:

The unit will switch to the last selected source.

Turning the System Off

Press **⏻** button again to turn the system off and go to Eco power mode.

Note:

- Be sure to unplug the power cord from the outlet when the system is not in use for an extended period of time.

Selecting Modes

Press **SOURCE** repeatedly to select **USB**, **AUX**, **Bluetooth**, or **Wi-Fi** mode.

Note:

- If the input volume is too low or muted (or if the unit is idle) for over 15 minutes, the unit will automatically switch to Standby mode.

Turning the Bass ON/OFF

Press **BASS** on the remote control repeatedly to turn the bass on or off.

Adjust Volume Level

During play, press the **VOL+/-** buttons to increase/decrease the volume level.

Mute Sound

During play, press the **⊘** button to mute or restore sound. Press this button again or **VOL+** button to cancel the effect.

Play Music Through Wi-Fi Network

This feature is based on UPnP (Universal Plug and Play) protocol. It allows you to use your smartphone as an UPnP server to transfer music files to this player for playback through the Wi-Fi network. Two different modes are provided to establish Wi-Fi connection.

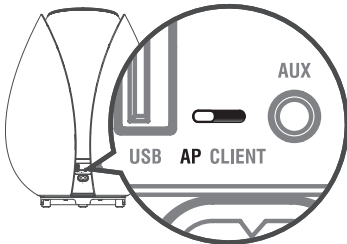
- Use your iPod Touch/ iPhone/ iPad as a UPnP server directly, or use your Android Smartphone/Tablet with a UPnP Player App installed. (Download this from the Google Play Store- BubbleUPnP is recommended.)

AP Mode: Use your smartphone to join the built-in Wi-Fi network of this player.

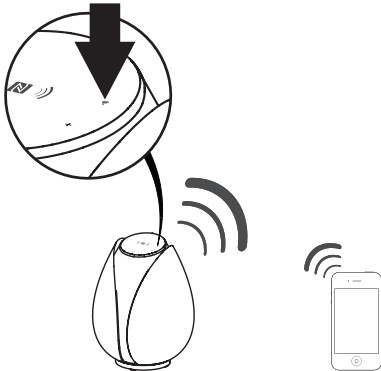
Client Mode: After configuration, this player will join the same home Wi-Fi network (router) as your smartphone.

AP Mode Configuration

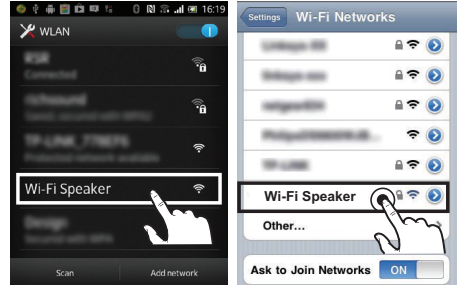
1 Flip the slide switch to "AP" mode on the rear of this player.



2 Turn on the player from standby mode and select Wi-Fi source.



- Go to the next step once the LED indicator stops flashing and the light stays on. It will stay on for a few seconds while it creates a WiFi network.
- 3 Use your smartphone to search for a Wi-Fi network (also known as WLAN).



- 4 Select "**Wi-Fi Speaker**" from available Wi-Fi network list and enter "**12345678**" for the password, wait until successful Wi-Fi connection appears on your smartphone.
- **Connected**/ is displayed on screen.
- 5 For how to stream music from your smartphone to this player and play back see **Listen to music from a Wi-Fi device**.

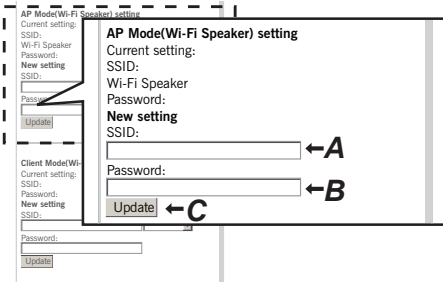
Note:

- If **WiFi Speaker** is not in the list, try to scan the available Wi-Fi networks again.

Configure Wi-Fi Speaker Security Setting

We strongly recommend that you add a password for this built-in Wi-Fi network (WiFi Speaker), you can also rename this network for easy recognition.

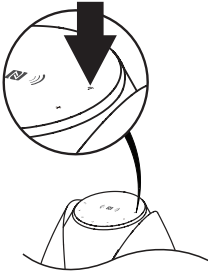
- 1 After your smartphone connects to **Wi-Fi Speaker**, launch Internet web browser and type in the address **192.168.0.1** and confirm. A **Wi-Fi Speaker Setting** web page will display as shown below.
- 2 Go to **AP Mode (Wi-Fi Speaker) setting**, and manually specify your network name (**SSID**) and security password.
 - Enter an easily recognizable name for Wi-Fi Speaker (**A**, optional).
 - Enter a password (**B**, recommended).



- 3 Press **Update (C)** to confirm new settings, new SSID and password will be displayed on refreshed setting page.

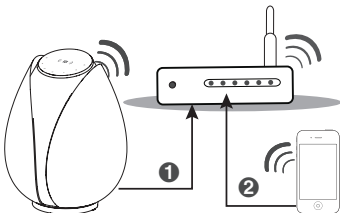
TIP:

- Your smartphone will lose wireless connection after a new setting is applied, you must search for renamed (or not) built-in Wi-Fi network again and connect to it with a specified password.
- If you forget the password, press and hold **Wi-Fi** button on the front panel to restore all Wi-Fi settings to default.



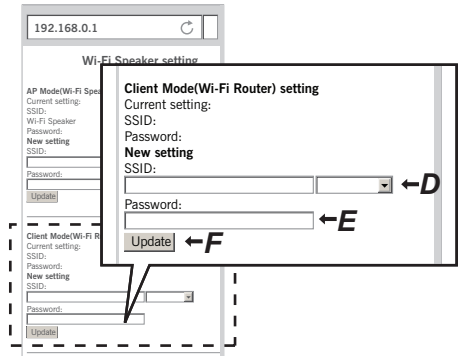
Default Name(SSID): **Wi-Fi Speaker**
 Default Password: **12345678**

Client Mode Configuration

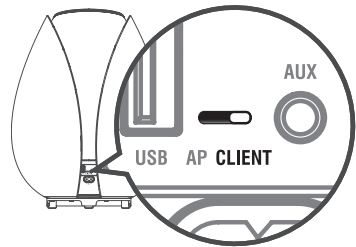


You can configure this player to connect to your home router using the client mode setting web page.

- You will need to know the name and password of your home Wi-Fi network before you start.
- 1 Connect your smartphone to this player at **AP Mode** and browse **Wi-Fi Speaker Setting Page** (See **AP Mode Configuration**).
 - 2 Go to **Client Mode(Wi-Fi Router) Setting**. Click "▼" and select your home Wi-Fi network from pulldown **SSID** list **(D)**.
 - 3 Type in the password of the selected Wi-Fi network **(E)**.
 - 4 Press **Update (F)** to confirm new settings.



- 5 Flip the slide switch to "**CLIENT**" mode on the rear of this player.



- LED indicator will flash for a few seconds, wait until it stops flashing and the light stays on .
- 5 Use your smartphone to search and to join the same home Wi-Fi network.
 - 6 For how to stream music from your smartphone to play back, see **Listen to music from a Wi-Fi device**.

Listen to Music from a Wi-Fi Device

Make sure that your smartphone is connected successfully.

Stream from your iPod Touch/iPhone/iPad

- 1 Launch the iPod/Music application on your iPod touch/iPhone/iPad.
- 2 Tap on the  icon.
- 3 Select **Wi-Fi speaker** (or user customized name) from the list.
- 4 Select a media file and start to play.
 - Wait until successful audio is streamed to the speakers.



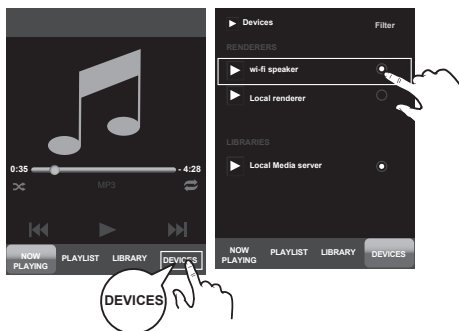
Note:

If you fail to hear music after a successful setup, do the following on your iPod touch/iPhone/iPad:

- Disconnect and then re-connect to the same Wi-Fi router again;
- Close all applications running in the background;
- Power off and then power on your iPod touch/iPhone/iPad again.

Stream from your Android Device

- 1 Download the App "**BubbleUPnP**" from Google Play Store ([https:// play. google. com](https://play.google.com)) and install.
 - You can also download and install another UPnP player App to stream music such as "**Skifta**".
- 2 Open the **BubbleUPnP** music player.
- 3 Click "**DEVICE**" to select "**Wi-Fi speaker**" from the pulldown list.




- 4 Go to "**Library**" and select a music track to play back .
 - Wait until successful audio is streamed to the speakers.

Note:

- Not all Android devices are compatible with this player.
- Disconnect the current smartphone prior to playing music from another smartphone.

Control Play

- Press **VOL +/-** to adjust the volume to your desired level.
- Press the  button to mute sound. Press this button again or **VOL +** button to resume sound.

Play with Bluetooth Device

You can listen to music from a Bluetooth-enabled device via this player.

Pair Bluetooth-enabled Devices Manually

The first time you connect your Bluetooth device to this player, you need to pair your device to this player.

Note:

- The operational range between this player and a Bluetooth device is approximately 8 meters.
 - Before you connect a Bluetooth device to this unit, familiarize yourself with the Bluetooth capabilities of the device.
 - Compatibility with all Bluetooth devices is not guaranteed.
 - Any obstacle between this unit and a Bluetooth device may reduce the operational range.
 - Keep this player away from any other electronic device that may cause interference.
- 1 Turn on the Bluetooth function on your device.
 - 2 Switch player's source to Bluetooth.
 - 3 Press and hold "▶||/📶" button on remote control for a few seconds to activate Bluetooth pairing mode, 📶 icon will blink.
 - 4 Search for Bluetooth device with your device.
 - 5 Select "DRAGON LILY" in the pairing list.
 - 6 Enter default password "0000" if necessary. If the pairing succeeds, 📶 icon will stop blinking and the light will remain on.
 - 7 To disconnect the connection, turn off the Bluetooth function on your device or switch the player to another source.

Tips:

- If a connection exist but has been interrupted, hold and press "▶||/📶" button on the remote control for a few seconds to re-activate the pairing mode.
- If no other Bluetooth device pairs with this player within two minutes, the player will recover its previous connection.

- The player will disconnect when your device is moved beyond the operational range.
- If you want to reconnect your device to this player, place it within the operational range.
- If the device is moved beyond the operational range, when it is brought back, please check if the device is still connected to the player.
- If the connection is lost, follow the instruction above to pair your device to the player again.

Bluetooth-enabled Devices Using One Touch (NFC)

Using an NFC compatible bluetooth device, you can establish a bluetooth connection by just touching the unit with it.

- Make sure Bluetooth and NFC functions are enabled on your device .
- 1 Turn on the NFC function on your device.
- Make sure your device is in wake-up mode.



- 2 Turn on the unit and switch to Bluetooth source.
- 3 Touch the NFC sensing area with your device, the unit will pair and connect with your device.
- 4 Touch this area again, the unit will disconnect the Bluetooth connection.

Tips:

Some NFC-enabled mobile devices cannot pair directly with the unit via NFC, please try either one of the solutions below:

- Please download the App "Tap-and- Pair" from Google Play Store (<https://play.google.com>) and install.
- Pair with the unit manually first, then touch again on the NFC sensing area.

Listen to Music from Bluetooth Device

- If the connected Bluetooth device supports Advanced Audio Distribution Profile (A2DP), you can listen to the music stored on the device through the player.
- If the device also supports Audio Video Remote Control Profile (AVRCP), you can use the player's remote control to play music stored on the device.
 - 1 Pair your device with the player.
 - 2 Start to play music via your device (if it supports A2DP).
 - 3 Use supplied remote control to control play (if it supports AVRCP).
- To pause/resume play, press the ►||/⏮ button.
- To skip to a track, press the ◀◀,▶▶ buttons.

AUX IN Operation

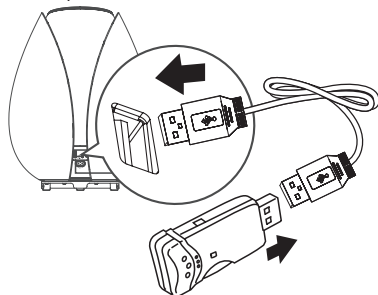
Additional AUX socket is located at the rear of the player. It is designed for mobile devices.

- 1 While in the ON mode, press **SOURCE** to select AUX mode.
2. Press **VOL +/-** to adjust the volume to your desired level.
3. Press the **MUTE** button to mute sound. Press this button again or **VOL+** button to resume sound.

USB Operation

Play Music From USB Device

- 1 While in power on mode, tap the **USB** button on the player or press the **SOURCE** button on the remote control to select USB mode.
- 2 Connect a USB device to **USB** port directly .

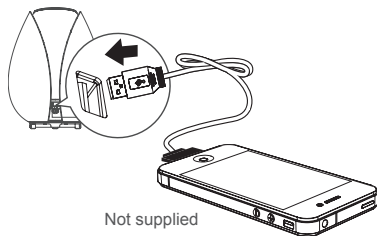


- 3 The unit will automatically start to play back .
 - To pause/resume play, press the ►|| button.
 - Press the ◀◀/▶▶ buttons on the remote control to select a MP3/WMA file number.

Play Music From Apple Devices

You can listen to music from Apple devices

- Connect your iPod/iPhone/iPad to USB socket by USB cable (not supplied).



- Start to play the connected iPod/iPhone/iPad.

USB Charge

Connect a USB cable(not supplied) to USB socket to charge your smartphone or tablet PC.

Troubleshooting

To keep the warranty valid, never try to repair the system yourself. If you encounter problems when using this unit, check the following points before requesting service.

No power

- Ensure that the AC cord of the apparatus is connected properly.
- Ensure that there is power at the AC outlet.
- Press **standby** (⏻) button to turn the unit on.

Remote control does not work

- Before you press any function button, first select the correct source.
- Reduce the distance between the remote control and the unit.
- Insert the battery with its polarities (+/-) aligned as indicated.
- Replace the battery.
- Aim the remote control directly at the sensor on the front of the unit.

No response from the unit

- Disconnect and reconnect the AC power plug, then turn the unit on again.

Unable to insert USB device

- Insert the USB device the other way around.

Cannot play some files from USB device

- Some USB devices may not be compatible with the unit.
- Only MP3/WMA file formats are supported.

Specifications

General

Power Requirements.....	AC 220-240V ~ 50/60Hz
Power Consumption	40W
Output Power	25W x 2 + 50W
Total Harmonic Distortion	<1% (1kHz, 1W)
Audio Input Sensitivity/Impedance	500mV/47kΩ
Unit Dimensions (W x H x D)	258 x 331 x 256 mm

Speaker

Front

Impedance.....	3Ω
Rate Power	25W

Woofer

Impedance.....	6Ω
Rate Power	50W

Remote

Distance	6m
Angle	30°

Standard Accessories

AC power cord	x 1
3.5mm to 3.5mm cord	x 1
USB to USB cord	x 1
Remote control	x 1
User manual.....	x 1

- Design and specifications are subject to change without notice.



Dear Customer

Should you experience any technical difficulty in setting up or using your new product, please feel free to contact our dedicated customer service help desk.

Tech Support Number: 0860 009 596
Tech Support E-mail address: help@nakamichi-uk.com

Wishing you many years of pure audio visual pleasure with your new Nakamichi equipment.