

LearningStation Assessment Application with Promethean Response Devices

Installation and User Manual



LearningStation, Inc.
8008 Corporate Center Drive
Suite 210
Charlotte, NC 28226
704-926-5400
888-679-7058
lscsupport@learningstation.com
www.learningstation.com

©2011 LearningStation, Inc. All rights reserved. Education Desktop is a service mark of LearningStation. All other brands are the property of their respective owners.

Reproduction and sharing of this document is permissible as long as it is shared in its entirety and in its original format. Please contact LearningStation with any questions on the use, reproduction or broadcasting of this document.

Installation Guide	Error! Bookmark not defined.
Getting Started.....	Error! Bookmark not defined.
Manufacturer Software	Error! Bookmark not defined.
Assessment Delivery via Promethean Clicker Devices.....	8
Group Test	13
Display Options	13
Student Responses:.....	13
Student Results:	13
Class Results:	13
Class Answers	13
Correct Answer	14
Pause	14
Help	14
Test Results	15
Self-Paced Test.....	16

Installation Guide

This user guide will allow customers to leverage the latest Promethean Clicker technology with our award winning assessment for learning application. Deliver formative assessments to your students in a fun and engaging environment.

The installation instructions **must** be completed before beginning. They are a one-time installation requirement only.

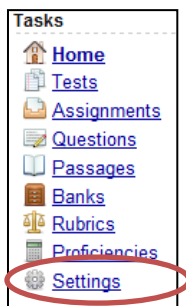
There are three separate applications/plugin-ins required:

- Promethean ActiveInspire
- Promethean FlashBridge
- Promethean Clicker Client

The following installation guide focuses on the installation instructions for Promethean devices specifically.

Getting Started

- *Log-in* to your active subscription. Please see your System Administrator or contact our support team if you need assistance with the URL, Username, SubscriptionID, and/or Password.
- Click **Settings** under **Tasks**



Manufacturer Software

Under **Promethean Clicker Client** you will do the following..

- Click the **Promethean Planet** link

Promethean Clicker Client

Your subscription has access to Promethean Clicker Client. This allows you to use Promethean Learner Response system.

1. If you haven't already, install ActiveInspire by visiting the **Promethean Planet**.
2. Install either the [Mac](#) or [Windows](#) version of the Promethean FlashBridge.
3. Click "Install Now" in the badge below to install the Promethean Clicker Client.

- On the Promethean Planet page *click* the link that says **Download Version x.x**



If you have not registered with Promethean Planet you will be prompted to do so prior to downloading the software. If you have already registered then you may login.

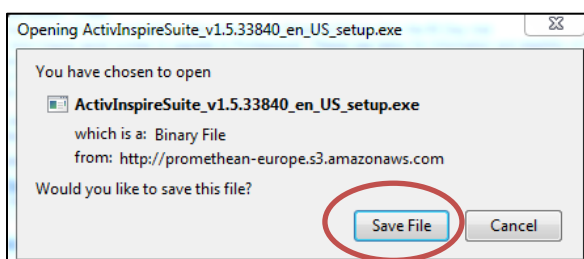
NOTE: THE ACTIVEINSPIRE RESOURCE PACK IS NOT REQUIRED FOR YOUR PROMETHEAN CLICKER DEVICE TO FUNCTION WITH THE LEARNING ASSESSMENT APPLICATION.

- Select **Download Version x.x** under the Windows column on the far left



You will be prompted to fill out a short questionnaire provided by Promethean Planet. Once completed, click **Submit Form** to start the download for the ActiveInspire software

- In Firefox, you will be prompted to save the file, click on **save file**



The **Downloads** window should appear if you are within Firefox. The file will be labeled *ActivInspireSuite_v1.5.33840_en_US_setup*

- Double click the downloaded file to execute the installation program
- Click **Run**

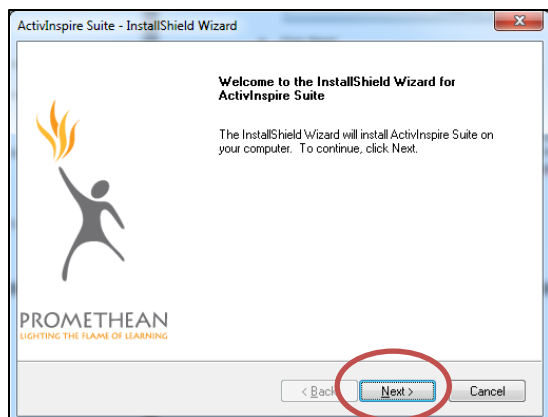
NOTE: IF YOU DO NOT SEE THE "DOWNLOADS" WINDOW IN FIREFOX, SELECT THE "TOOLS" MENU OPTION FROM WITHIN FIREFOX AND CLICK ON "DOWNLOADS" FROM THE DROPDOWN MENU.

NOTE: IF YOU ARE USING IE8, CHOOSE TO "RUN" THE FILE WHEN PROMPTED.

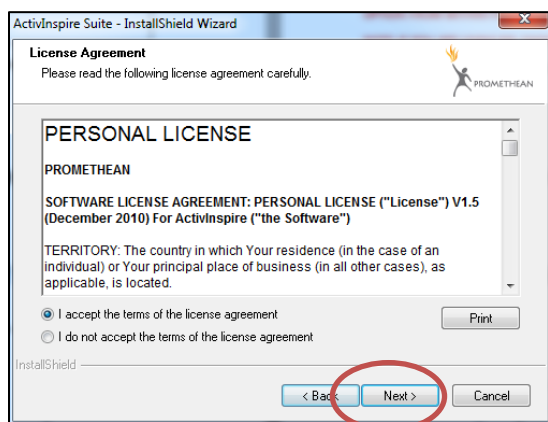
The ActiveInspire installation program will now begin. Follow the steps as they appear on the screen.

CONFIDENTIAL

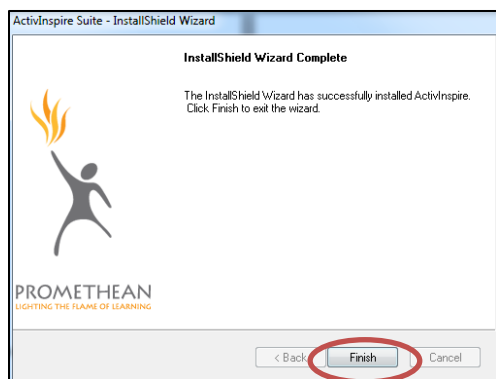
©2011 LearningStation, Inc. All rights reserved.



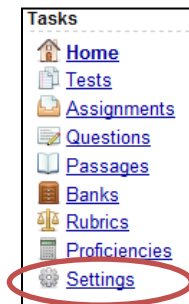
- Click **Next**
- Choose your installation choice. Choose **Full Install** if unsure
- Click **Next**
- Click **Next**
- Click **Next**. You should now be prompted to accept the license agreement



- Click **Next**
- Click **Next**
- Click **Install**
- Once installation is complete click **Finish**



- Return to the **Settings** screen within LearningStation's assessment application



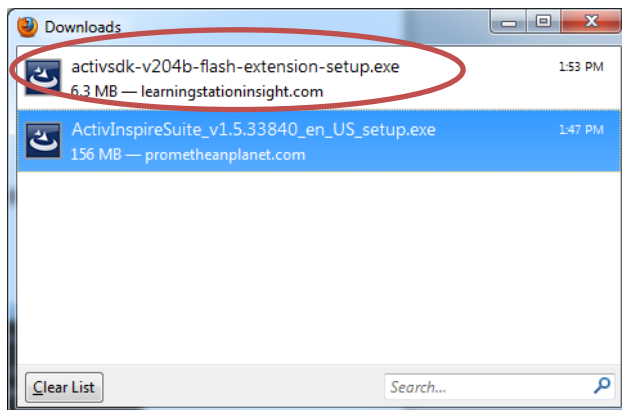
The next step will be the installation of Promethean's Flash Bridge.

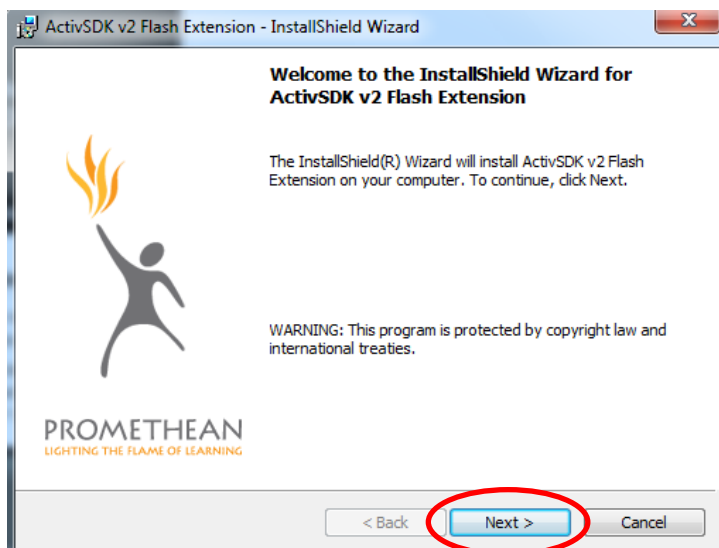
Promethean Clicker Client

Your subscription has access to Promethean Clicker Client. This allows you to use Promethean Learner Re

1. If you haven't already, install ActivInspire by visiting the [Promethean Planet](#).
2. Install either the [Mac](#) or [Windows](#) version of the Promethean Flash Bridge.
3. Click "Install Now" in the badge below to install the Promethean Clicker Client.

- Assuming this is a Microsoft Windows installation, *click **Windows***
- Click ***Save the file***
- Once the download is complete double click the file to execute it

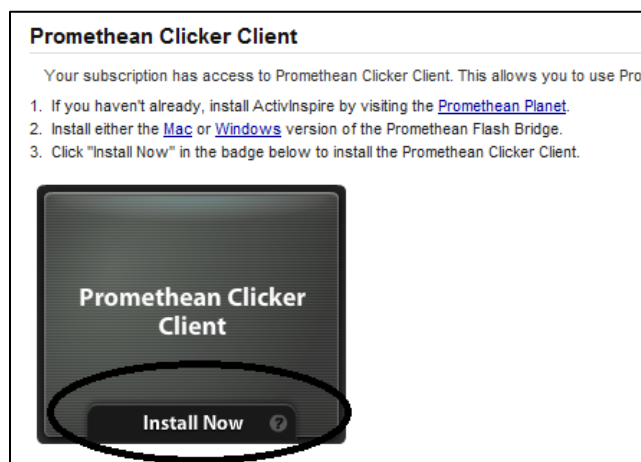




- Click **Next**
- Accept the license agreement and choose **Next**
- Click **Next**
- Click **Install**

NOTE: BE SURE THE BOX LABELED 'LAUNCH ACTIVESDK V2 FLASH EXTENSION' IS CHECKED. THIS PROGRAM MUST BE RUNNING FOR YOUR PROMETHEAN DEVICE TO FUNCTION PROPERLY.

- Click **Finish**
- Return to the **Settings** screen within LearningStation's assessment application for the 3rd and final installation program

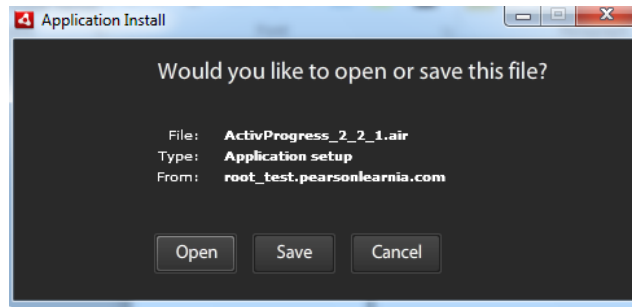


- Click **Install Now**

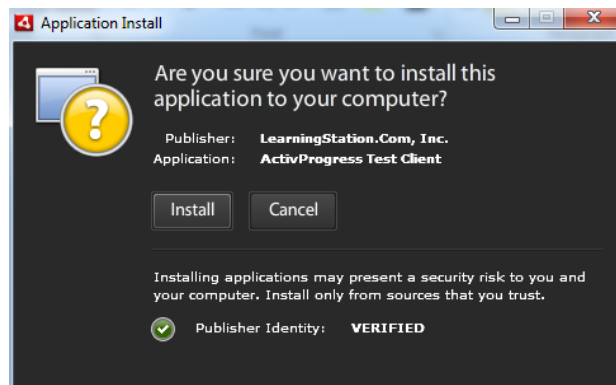
The installation for the Promethean Clicker Client will now begin.

CONFIDENTIAL

©2011 LearningStation, Inc. All rights reserved.



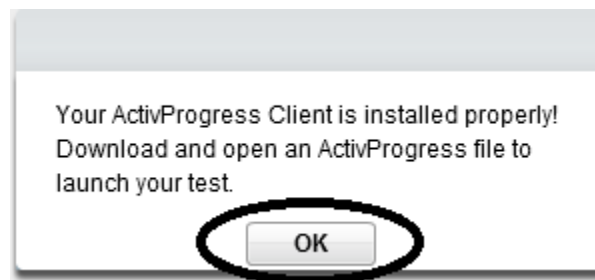
- Click **Open**



- Click **Install**
- Click **Continue**

Once complete, the ActivProgress client will execute stating a successful installation.

- Click **OK**



Congratulations. Your system is ready to deliver assessments using student response devices.

Assessment Delivery via Promethean Clicker Devices

The remaining portion of this user guide will provide details on delivering an assessment using Promethean response devices. This user guide assumes an existing understanding for the use of the assessment application. If additional information is needed on the overall features and functionality of the assessment application, please see the corresponding User Guide.

CONFIDENTIAL

©2011 LearningStation, Inc. All rights reserved.

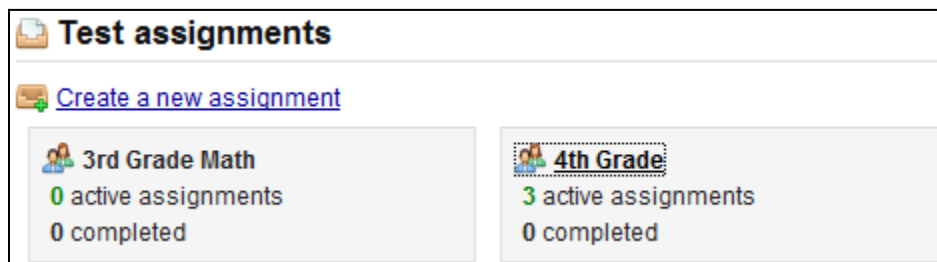
Log-in to your active subscription. Please see your System Administrator or contact our support team if you need access information.

IMPORTANT NOTE: PLEASE MAKE SURE THE PROMETHEAN FLASHSDK IS RUNNING. IT WILL SHOW AN ICON IN THE SYSTEM TRAY LOCATED IN THE BOTTOM RIGHT CORNER OF YOUR DESKTOP AS SHOWN

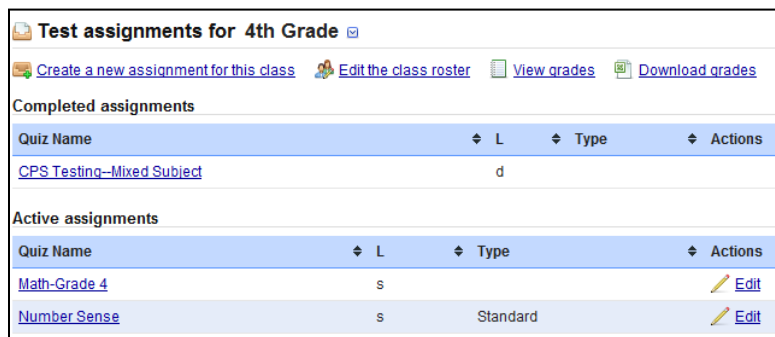


IF YOU RECENTLY INSTALLED THIS APPLICATION IT SHOULD BE RUNNING. ALSO BE SURE RESPONSE DEVICES HAVE BEEN DISTRIBUTED TO THE STUDENTS. IF THE ABOVE APPLICATIONS ARE NOT RUNNING PROPERLY, YOU WILL RECEIVE A MESSAGE NOTIFYING YOU TO LAUNCH THE APPROPRIATE APPLICATION WHEN ATTEMPTING TO START A TEST.

- Locate the test to be delivered under **Assignments**
- Click the appropriate **class**



- Click the appropriate **test name**



Quiz Name	L	Type	Actions
CPS Testing--Mixed Subject		d	

Quiz Name	L	Type	Actions
Math-Grade 4	s		Edit
Number Sense	s	Standard	Edit

- From the test details screen, click **Student Response Device Test** under **Integrated apps**

Math-Grade 4 for 4th Grade

[Edit](#) [Return to classroom](#) [Return to assignments](#) [Preview the test](#) [Delete](#) [Close testing](#)

0 of 5 students are finished and testing is still open.

There is no data to display.

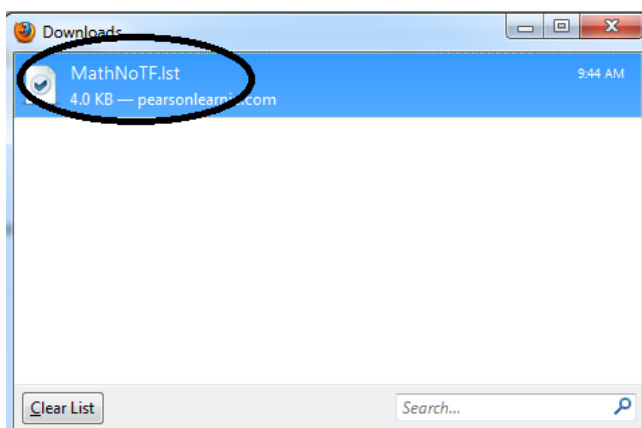
Testing summary

Math-Grade 4 is a 5 question test created on December 20. Student review is not allowed for this **untimed assignment**.

Printable test	Test key	Integrated apps
High quality PDF Printable HTML	PDF answer key HTML answer key	Apperson key Student Response Device Test SMART Notebook

- Choose **Save File**
- Click on **OK**

In this example, the file is named *MathNoTF.lst*



NOTE: THE PROMETHEAN HUB MUST BE CONNECTED TO YOUR COMPUTER AT THIS TIME

- Double click the file to execute it

IMPORTANT NOTE: BE SURE THAT THE FILE IS OPENED IN THE 'ACTIVPROGRESS TEST CLIENT' PROGRAM AND NOT THE 'LEARNINGSTATION RESPONSE CLIENT'. IF YOU HAVE USED A SMART OR CPS CLICKER DEVICE BEFORE, THEN THE TEST MAY BE LOADED IN THE LEARNINGSTATION RESPONSE CLIENT RATHER THAN PROMETHEAN'S ACTIVPROGRESS TEST CLIENT. THE CORRECT TITLE BAR FOR THE CORRECT PROGRAM TO USE THE PROMETHEAN DEVICES IS SHOWN BELOW.

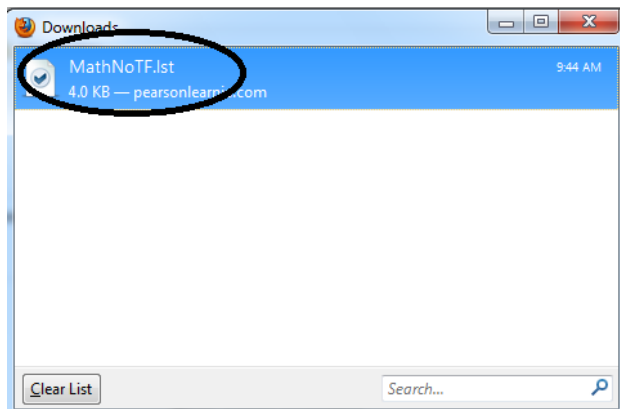


CONFIDENTIAL

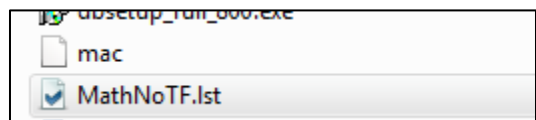
©2011 LearningStation, Inc. All rights reserved.

If your file loaded into the correct program as shown above you may skip these next steps and continue with the next page. If not, follow these steps to ensure the test is loaded into the correct program.

- *Locate* the folder on your computer that the test key (the file that is downloaded when **Student Response Device** is selected) was downloaded to. In most cases it will be the **Downloads** folder on your hard drive, or the desktop. If unsure, and Firefox was used to download the file, *open* up your Firefox web browser, *select* the **Tools** menu from the top menu options, and *select* **Downloads**
- This window shows you what files have been downloaded onto your computer. In the example for this guide the file downloaded was named 'MathNoTF.lst' as shown below

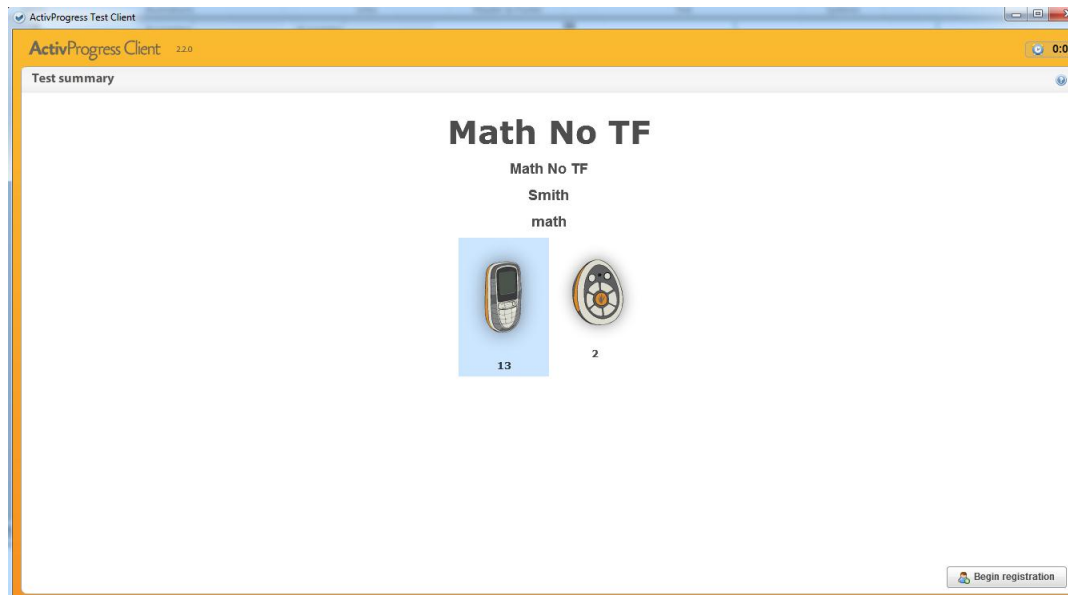


- If you *right-click* this file and *select* **Open Containing Folder** you will be taken to the location on your hard drive where the file exists
- Once the file is located, *right click* the file. An example is shown below for the same file that has been used in this guide. (The extension for the filename will end in '.lst')

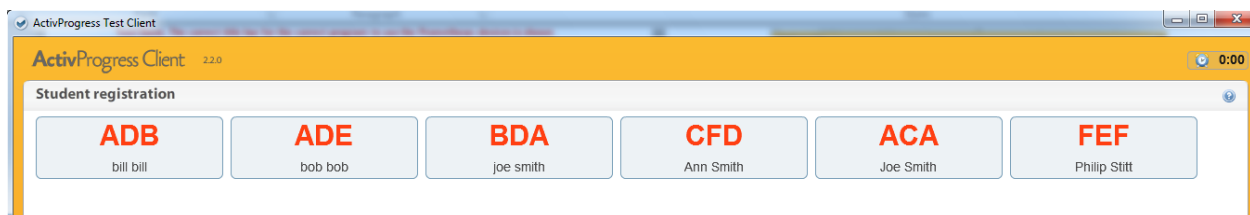


- After *right-clicking* the file, *choose* the '**Open with...**' option and be sure that **ActivProgress Client.exe** is selected
- This can also be changed by *setting* **ActivProgress Client** to the default program under the same '**Open with...**' option.

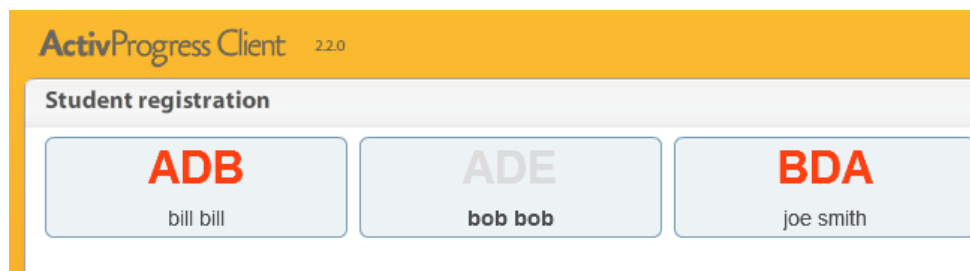
- The test will begin to load. When the loading is complete, the screen will include a summary of the test selected (Assignment Name, Test Name, Teacher Name, Class)



- Be sure the appropriate clicker is select as shown above (A blue shaded box will surround your selection)
- Have the students turn on the response devices
- Click **Begin registration**
- A list of students enrolled in the class will be listed. Each student should enter their registration letter on their response device.



- When a student registers, their name and registration letter will turn grey. If a student is having difficulty or keys their information incorrectly, the registration process can be restarted. Simply click **Restart registration**



- Once all students have signed in, you can begin a group test or a self-paced test.

Group Test

A group test means all the students will answer the question(s) before the next question is displayed.

- For a group test, click 'Begin a group test'
- The first question in the test will be displayed. Student(s) enter their answers on the devices and press 'send.'

Display Options

There are several screen display options which can be utilized by the instructor as the test is administered. Down the left side, the instructor can view various answer distribution data for each question.

Student Responses:

- All the students who registered will be displayed.
- As students answer the questions, a check mark will appear by their name.

 Student Five

Student Results:

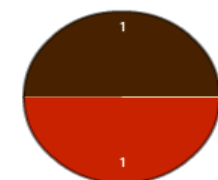
- Student(s) who answered correctly will be indicated by a green check mark
- Student(s) who answered incorrectly will be indicated by a red dash

 Student Four

 Student Five

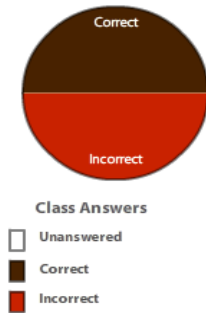
Class Results:

- The answer distribution across the distracters will be displayed. In this example, 1 student answered option A and 1 student answered option B.



Class Answers

- The percentage of correct and incorrect answers selected will be displayed.



If the instructor does not want the students to see this information, this window can be minimized.

- Click the arrow to open and close the window pane. As students select their answers, check marks will continue to be displayed. In a group test setting, the instructor needs to know when all the students have answered the question before moving to the next question.



On the right side of the display, additional options are available.

Correct Answer 

- Click the green check mark to display the correct answer. The correct answer will be highlighted for the students to view. A check mark will appear next to the correct answer and the correct distracter will be bolded.



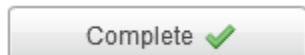
Pause 

- Click the monitor icon to pause the test. The question will be hidden from student view. To resume the test, click the 'Resume test' button

Help 

- Select for additional information. The help information changes for varying screens, providing users specific detail about the screen in view. These are mini-help files to guide a user through the application and are not intended to be fully descriptive.

Once all the students have responded and the necessary answer distributions have been reviewed, click 'Next'. A previous button and progress bar are provided as well. Continue to the end of the test in the manner described above. When the final question has been answered, click the 'Complete' button



Test Results

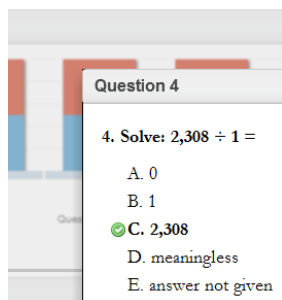
Once the test has been completed, a summary page will appear providing aggregate student data.

- The chart in the upper left displays the percentage of correct and incorrect answers per question.
- The chart in the lower left displays the answer distribution across the distracter options.
- In the following example, all students answered question 4 incorrectly and all students selected option D as their response.

Results summary for Math-Grade 4



- To review the question, *click* the question number in either chart.
- In the following example, question number 4 was selected. The question and correct answer are displayed.



- The chart on the upper right indicates how many students got how many questions correct. It represents a bell curve for correctly answered questions across the test.
- The y-axis represents the count of students and the x-axis represents the number of correct answers.

- In the example, no students got zero questions correct, no students got one question correct, two students got two questions correct, no students got three questions correct, etc.
- In the lower right, click **Process Results**

IMPORTANT NOTE: THE 'PROCESS RESULTS' BUTTON MUST BE SELECTED IN ORDER TO SAVE STUDENT RESULTS IN THE ASSESSMENT APPLICATION. THE ASSESSMENT APPLICATION PROVIDES ADDITIONAL STUDENT DATA ACROSS MULTIPLE TESTS, CLASSES, AND INDICATORS TESTED. THE ASSESSMENT APPLICATION WILL NOT INCLUDE STUDENT RESULTS FROM DEVICE-DELIVERED ASSESSMENTS IF THE RESULTS ARE NOT PROCESSED.


- Click **View results** to be directed to the assessment application for additional reporting details.

Self-Paced Test


A self-paced test allows students to answer the questions at their own speed. The test is printed and distributed to the students. Students still answer the questions using their response devices. The questions are no longer displayed for all to view.


- After the students have registered their devices, click **Begin a self-paced test**
- Student pace and current results are monitored by the instructor.


Independent Testing											
Student	Device Serial	Q1	Q2	Q3	Q4	Q5	Q6	Q7	Q8	Q9	Percent Correct
Five, Student	2D7CD4	C	C	C	C						9.0909090909
Four, Student	2D8794	A	A	C	B	D	B	A	B		36.363636363


- Once all the students have answered all the questions, click 
- The test results page will be displayed.
- Click **Process results** to send the student results to LearningStation's assessment application
- For more information on test summary details, please see the *Test Results* section above

To view the results in LearningStation's assessment application *navigate* back to your home page and click the **Test Builder** tab. Select **Assignments**. Locate the appropriate classroom.


Test assignments


[Create a new assignment](#)


3rd Grade Math
0 active assignments
0 completed


4th Grade
3 active assignments
0 completed

- Click the appropriate **test name**

Test assignments for 4th Grade

[Create a new assignment for this class](#)
[Edit the class roster](#)
[View grades](#)
[Download grades](#)

Completed assignments

Quiz Name	L	Type	Actions
CPS Testing--Mixed Subject	d		

Active assignments

Quiz Name	L	Type	Actions
Math-Grade 4	s		Edit
Number Sense	s	Standard	Edit

You will see the results from the tests.

