

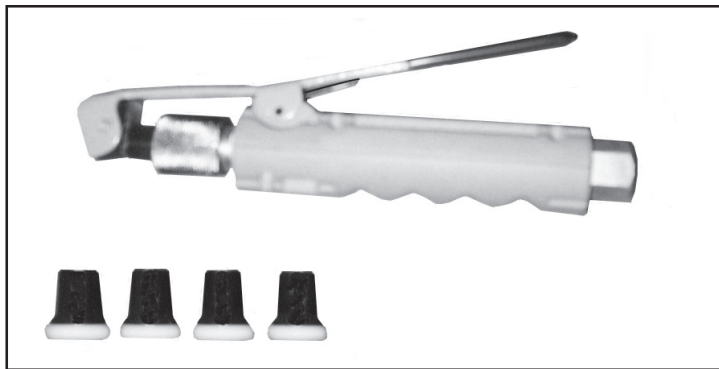
**CENTRAL PNEUMATIC®**

# **SANDBLASTER GUN**

**WITH 4 CERAMIC NOZZLES**

**Model 92189**

## **ASSEMBLY AND OPERATING INSTRUCTIONS**



3491 Mission Oaks Blvd., Camarillo, CA 93011  
Visit our Web site at: <http://www.harborfreight.com>

**TO PREVENT SERIOUS INJURY,  
READ AND UNDERSTAND ALL WARNINGS  
AND INSTRUCTIONS BEFORE USE.**

Copyright©2004 by Harbor Freight Tools®. All rights reserved. No portion of this manual or any artwork contained herein may be reproduced in any shape or form without the express written consent of Harbor Freight Tools.

**For technical questions or replacement parts, please call 1-800-444-3353.**

## PRODUCT SPECIFICATIONS

Item	Description
Nozzle Sizes	2 mm , 2.5 mm , 3 mm , 3.5 mm (Fine, Medium, Course Grit Sizes)
Inlet Size	3/8" - 18 NPT
Maximum Working Pressure	100 PSI
Working Pressure	60-100 PSI
Trigger Size/Type	7-1/2" Long w/ Paddle Control Grip
Overall Dimensions	8-1/2" Long x 1-1/2" Diameter
Additional Features	Safety Trigger Lock / Non-Slip Vinyl Grip
Weight	1.30 Pounds

## UNPACKING

When unpacking, check to make sure all the parts shown on the **Parts List on page 9** are included. If any parts are missing or broken, please call Harbor Freight Tools at the number shown on the cover of this manual as soon as possible.

## SAVE THIS MANUAL

You will need this manual for the safety warnings and precautions, assembly, operating, inspection, maintenance and cleaning procedures, parts list and assembly diagram. Keep your invoice with this manual. Write the invoice number on the inside of the front cover. Keep this manual and invoice in a safe and dry place for future reference.

## GENERAL SAFETY RULES

### IMPORTANT SAFETY INSTRUCTIONS



**WARNING!**

**READ AND UNDERSTAND ALL INSTRUCTIONS**

**Failure to follow all instructions listed in the following pages may result in electric shock, fire, and/or serious injury.**

**SAVE THESE INSTRUCTIONS**

### WORK AREA

1. **Keep your work area clean and well lit.** Cluttered benches and dark areas invite accidents.
2. **Do not operate pneumatic equipment in explosive atmospheres, such as in**

**the presence of flammable liquids, gases, or dust.** Pneumatic equipment can create sparks which may ignite flammables.

3. **Keep bystanders, children, and visitors away while operating a pneumatic tool.** Distractions can cause you to lose control. Protect others in the work area from debris such as chips and sparks. Provide barriers or shields as needed.

#### PERSONAL SAFETY

**ALSO SEE SPECIFIC SAFETY RULES ON PAGE 4.**

1. **Stay alert. Watch what you are doing, and use common sense when operating a pneumatic tool. Do not use a pneumatic tool while tired or under the influence of drugs, alcohol, or medication.** A moment of inattention while operating pneumatic tools may result in serious personal injury.
2. **Dress properly. Do not wear loose clothing or jewelry. Contain long hair. Keep your hair, clothing, and gloves away from moving parts.** Loose clothes, jewelry, or long hair can be caught in moving parts. Always wear ANSI approved safety glasses and full face shield. Always wear hearing protection.
3. **Avoid accidental starting. Be sure the Trigger (42) is off before connecting to the air supply.** Carrying pneumatic tools with your hand on the Trigger, or connecting pneumatic tools to the air supply with the Trigger on, invites accidents.
4. **Remove adjusting keys or wrenches before turning on the tool.** A wrench or a key that is left attached to a rotating part of the tool may result in personal injury.
5. **Do not overreach. Keep proper footing and balance at all times.** Proper footing and balance enables better control of the tool in unexpected situations.

#### TOOL USE AND CARE

1. **Use clamps or other practical ways to secure and support the workpiece to a stable platform.** Always wear sandblasting gloves. Never point the Nozzle of the Sandblaster Gun at your gloves. Holding the work by hand is unstable and may lead to loss of control and injury. Only work on a workpiece that is properly secured.
2. **Do not force the tool. Use the correct tool for your application.** The correct tool will do the job better and safer at the rate for which it is designed.
3. **Do not use this tool if the Trigger does not turn it on or off.** Any tool that cannot be controlled with the Trigger is dangerous and must be replaced.


4. **Disconnect the grit supply hose from the tool before making any adjustments, changing accessories, or storing the tool.** Such preventive safety measures reduce the risk of starting the tool accidentally.
5. **Store idle tools out of reach of children and other untrained persons.** Tools are dangerous in the hands of untrained users.
6. **Maintain tools with care.** Do not use a damaged tool. Tag damaged tools “Do not use” until repaired.
7. **Check for misalignment or binding of moving parts, breakage of parts, damaged air hose (not included), and any other condition that may affect the tool’s operation. If damaged, have the tool serviced before using.** Many accidents are caused by poorly maintained tools.
8. **Use only accessories that are recommended by the manufacturer for your model.** Accessories that may be suitable for one tool may become hazardous when used on another tool.

#### SERVICE

1. **Tool service must be performed only by qualified repair personnel.** Service or maintenance performed by unqualified personnel could result in a risk of injury.
2. **When servicing a tool, use only identical replacement parts. Follow instructions in the “*Inspection, Maintenance, And Cleaning*” section of this manual.** Use of unauthorized parts or failure to follow maintenance instructions may create a risk of injury.

#### SPECIFIC SAFETY RULES


1. **Maintain labels and nameplates on the Sandblaster Gun.** These carry important information. If unreadable or missing, contact Harbor Freight Tools for a replacement.
2. **Use clean, dry, regulated, compressed air from the air compressor to the sandblaster.** Never use oxygen, carbon dioxide, combustible gases, or any other bottled gas as a power source for this tool.
3. **Always disconnect the Sandblaster Gun from its grit supply hose source, and squeeze the Trigger (42), while pointing unit in a safe direction, to release all compressed air and grit in the tool before performing any maintenance or services.**

4. **Maintain a firm grip on the Sandblaster Gun when in use.**
5. **Never point the Sandblaster Gun toward yourself, other people, or animals. Keep all people and animals safely away from the work area.**
6. **Maintain a safe distance away from the object being sandblasted.** Whenever possible, sandblast the object at a 45 degree angle to minimize the possibility of grit, dirt, and debris ricocheting directly backward toward your face and body.
7. **Whenever possible, perform a sandblasting test on a small area of the object to be sandblasted.** If necessary adjust the distance to the object and/or the Nozzle (37) to be used for more effective results.
8. **Avoid unintentional starting.** Make sure the Trigger (42) on the Sandblaster Gun is in its “OFF” or “CLOSED” position when the tool is not in use.
9. **Make sure to read and understand all safety warnings and precautions as outlined in the manufacturer’s *owner’s manual* of the sandblaster unit with which you will use the Sandblaster Gun.**
10. **Industrial applications must follow OSHA requirements.**
11.  **WARNING!** **Abrasive blasting with sand containing crystalline silica can cause serious or fatal respiratory disease.** Exposure to crystalline silica may cause silicosis (a serious lung disease), cancer, and death. Exposure to aluminum oxide (a dust generated from material removing processes) can result in eye, skin, and breathing irritation. Always use a NIOSH (National Institute for Occupational Safety and Health) approved respirator, safety goggles, and a full face shield. Avoid skin exposure. Proper ventilation in the work area is required. Read and understand the **ten** recommended measures below to reduce crystalline silica exposure in the workplace and prevent silicosis and silicosis related deaths.

**NIOSH recommends the following measures to reduce crystalline silica exposures in the workplace and prevent silicosis and silicosis related deaths:**

- A. Prohibit silica sand (or other substances containing more than 1% crystalline silica) as an abrasive blasting material and substitute less hazardous materials.
- B. Conduct air monitoring to measure worker exposures, (if using under OSHA applications).
- C. Use containment methods such as blast-cleaning machines and cabinets to

control the hazard and protect adjacent workers from exposure.

- D. Practice good personal hygiene to avoid unnecessary exposure to silica dust.
  - E. Wear washable or disposable protective clothes at the worksite. Shower, and change into clean clothes before leaving the worksite to prevent contamination of cars, homes, and other work areas.
  - F. Use respiratory protection when source controls cannot keep silica exposures below the NIOSH recommended levels.
  - G. Provide periodic medical examinations for all workers who may be exposed to crystalline silica.
  - H. Post signs to warn workers about the hazard and to inform them about required protective equipment.
  - I. Provide workers with training that includes information about health effects, work practices, and protective equipment for crystalline silica.
  - J. Report all cases of silicosis to State health departments and to OSHA or the Mine Safety and Health Administration (MSHA).
12.  **WARNING!** The warnings, precautions, and instructions discussed in this manual cannot cover all possible conditions and situations that may occur. The operator must understand that common sense and caution are factors which cannot be built into this product, but must be supplied by the operator.

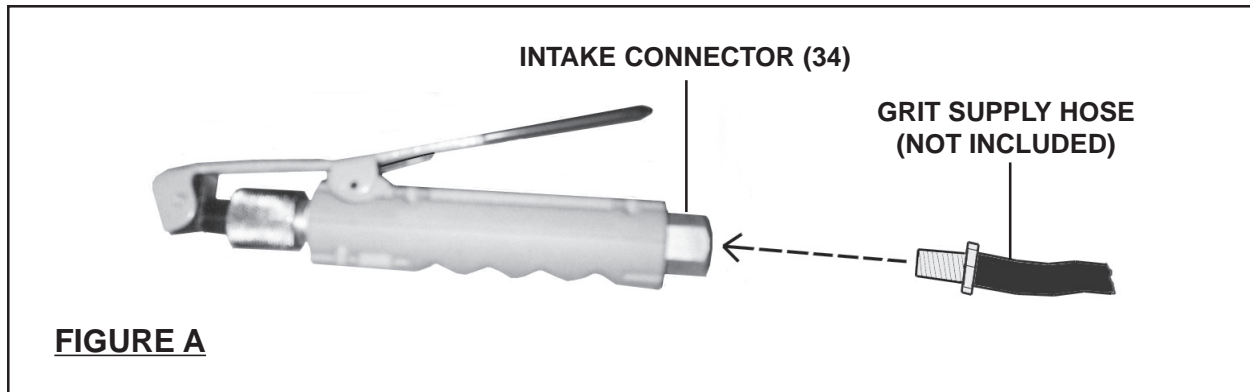
## SAVE THESE INSTRUCTIONS

### ASSEMBLY AND OPERATING INSTRUCTIONS

**NOTE:** For additional references to the parts listed in the following pages, refer to the **Assembly Diagram on page 10.**

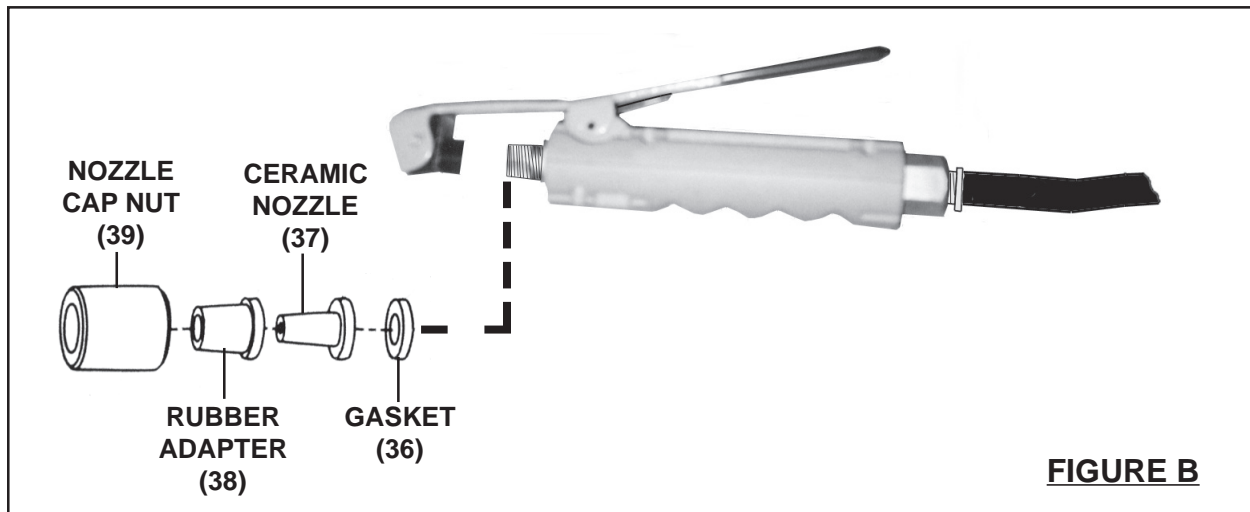
#### ***To Attach A Grit Supply Hose To The Sandblaster Gun:***

1. To attach a grit supply hose - 3/8" - 18 NPT (not included) to the Sandblaster Gun, wrap approximately 3" of pipe thread sealer tape (not included) around the male threads at the end of the grit supply hose. Then, firmly tighten the grit supply hose onto the Intake Connector (34) of the Sandblaster. **(See Figure A, next page.)**




**To Install A Ceramic Nozzle:**

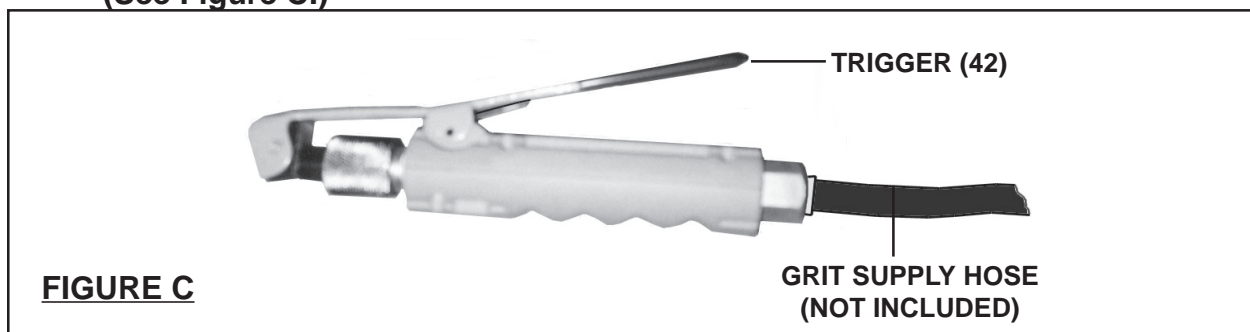
1. The Sandblaster Gun is equipped with four different size Ceramic Nozzles (37) and Rubber Adapters (38) for fine, medium, and course grit. **(See Figure B.)**
2. To install a Ceramic Nozzle (37), unscrew and remove the Nozzle Cap Nut (39). Place the Gasket (36) against the Adapter (35). Place the Ceramic Nozzle against the Gasket. Insert the corresponding size Rubber Adapter (38) onto the Ceramic Nozzle. Then, firmly screw the Nozzle Cap Nut back onto the Adapter. **(See Figure B.)**



**To Operate The Sandblaster Gun:**

1.  **WARNING!** Prior to operating the Sandblaster Gun, make sure you read and understand ALL safety precautions and warnings as outlined in this manual *and* in the manual of the sandblaster being used.

2. If possible, place the workpiece inside a sandblast cabinet (not included). Otherwise, isolate the workpiece to make sure no damage can occur to nearby walls, tools, equipment, or other property.
3. Install the desired size Ceramic Nozzle (37) and Rubber Adapter (38) on the Sandblaster Gun. **(See Figure B.)**
4. Connect the grit supply hose to the Sandblaster Gun. In order to keep the grit supply hose out of the way, hang it over your shoulder. **(See Figure A.)**
5. Turn on the sandblaster unit (not included).
6. **IMPORTANT!** Grip the Sandblaster Gun firmly.
7. Aim the Sandblaster Gun at the workpiece, and squeeze down on the Trigger (42) of the Sandblaster Gun while slowly moving the tool in a circular or right to left motion until you have achieved the desired appearance (finish) on the workpiece. **(See Figure C.)**
8. When the sandblasting job is completed, release pressure on the Trigger (42) to turn off the Sandblaster Gun. Turn off the sandblaster unit. Squeeze down on the Trigger, while pointing in a safe direction, to release any remaining air pressure and grit. Then, disconnect the grit supply hose from the Sandblaster Gun. **(See Figure C.)**



## INSPECTION, MAINTENANCE, AND CLEANING

1. **WARNING!** Always make sure the Trigger (42) is in its “OFF” position, and disconnect the Sandblaster Gun from its grit supply hose before performing any inspection, adjustments, maintenance, or cleaning.
2. **Before each use**, inspect the general condition of the Sandblaster Gun. Check for loose screws, misalignment or binding of moving parts, cracked or broken



parts, clogged Ceramic Nozzle, damaged grit supply hose, and any other condition that may affect its safe operation. If abnormal noise or vibration occurs, have the problem corrected before further use. **Do not use damaged equipment.**

3. **Daily:** With a clean cloth, remove all dirt, grit, and debris from the outer body of the Sandblaster Gun and from all Nozzle components. If necessary, you may use a mild detergent. Do not use solvents, as damage to the Sandblaster Gun may occur. Do not immerse the Sandblaster Gun in any liquids.
4. **When storing:** Always store the Sandblaster Gun in a clean, dry location out of reach of children.

**PLEASE READ THE FOLLOWING CAREFULLY**

THE MANUFACTURER AND/OR DISTRIBUTOR HAS PROVIDED THE PARTS LIST AND ASSEMBLY DIAGRAM IN THIS MANUAL AS A REFERENCE TOOL ONLY. NEITHER THE MANUFACTURER OR DISTRIBUTOR MAKES ANY REPRESENTATION OR WARRANTY OF ANY KIND TO THE BUYER THAT HE OR SHE IS QUALIFIED TO MAKE ANY REPAIRS TO THE PRODUCT, OR THAT HE OR SHE IS QUALIFIED TO REPLACE ANY PARTS OF THE PRODUCT. IN FACT, THE MANUFACTURER AND/OR DISTRIBUTOR EXPRESSLY STATES THAT ALL REPAIRS AND PARTS REPLACEMENTS SHOULD BE UNDERTAKEN BY CERTIFIED AND LICENSED TECHNICIANS, AND NOT BY THE BUYER. THE BUYER ASSUMES ALL RISK AND LIABILITY ARISING OUT OF HIS OR HER REPAIRS TO THE ORIGINAL PRODUCT OR REPLACEMENT PARTS THERETO, OR ARISING OUT OF HIS OR HER INSTALLATION OF REPLACEMENT PARTS THERETO.

**PARTS LIST**

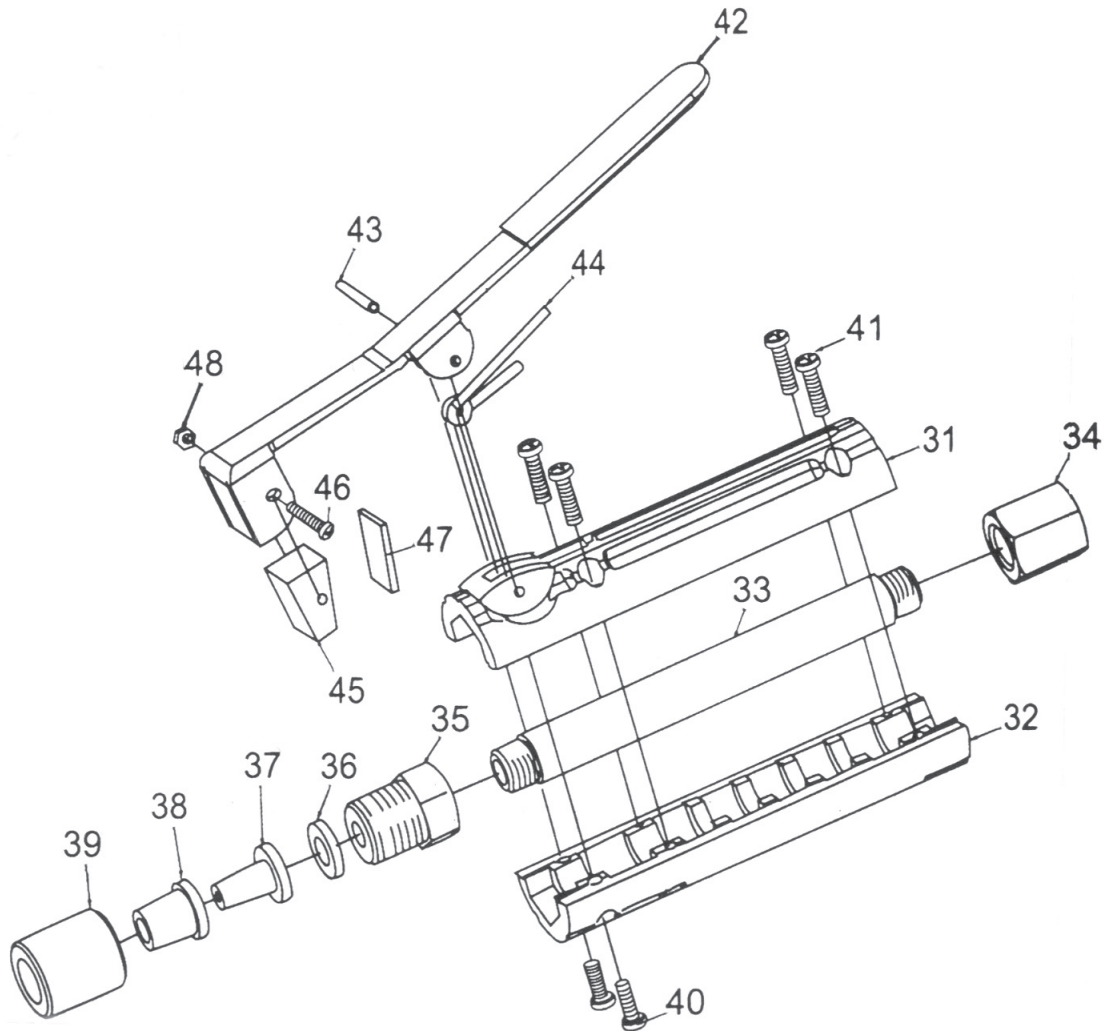
Part #	Description	Qty.	Part #	Description	Qty.
31	Upper Body	1	41	Screw (ST4.2x12)	2
32	Lower Body	1	42	Trigger	1
33	Metal Pipe	1	43	Roll Pin	1
34+	Intake Connector	1	44	Spring	1
35	Adapter	1	45	Rubber Pad	1
36	Gasket	1	46	Screw (M3x25)	1
37 *	Ceramic Nozzle	4	47	Pad	1
38	Rubber Adapter	4	48	Nut (M3)	1
39	Nozzle Cap Nut	1	49	Abrasive Gun Assembly	1
40	Screw (ST4.2x12)	4			

\* 37A = 2mm Nozzle, 37B = 2.5mm Nozzle, 37C = 3mm Nozzle, 37D = 3.5mm Nozzle.  
+ 3/8" - 18 NPT

**NOTE:**

Some parts are listed and shown for illustration purposes only, and are not available individually as replacement parts.

# ASSEMBLY DIAGRAM



**NOTE:**

Some parts are listed and shown for illustration purposes only, and are not available individually as replacement parts.