

# 赛尔讯电子 ( 香港 ) 有限公司



## **GSM/GPRS/GPS TRACKER USER MANUAL**



### **1.0 General description**

This GPS-Tracker works in already existing **GSM/GPRS** Networks and submits its position dates (Coordinates) received from **GPS-Satellites**. The usage of GPS-Satellites within this operating range is in all over the world possible and for free.

Minimal charges arise only, when your Tracker sends a message to you, or when you are sending a new command to him.

(usual SMS-fee according your SIM-Cart-Rate)

The Tracker can anyway locate and control the position of any remoted targets sending their GPS-coordinates via **SMS** and **Internet** .

A matter not only for military or secret-service ! **It is now for you as well !**

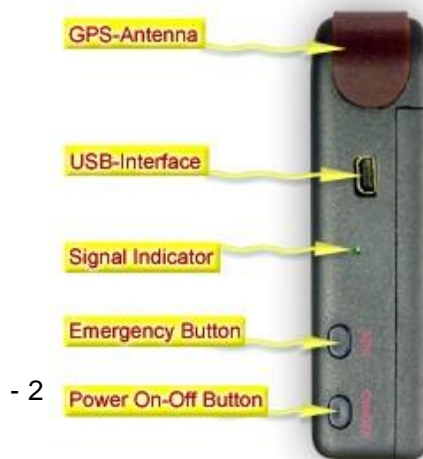
The possible applications dont know any limits. It should run exclusively in your fantasy how do you will use it.

It's very easy and effective as well. Percuade your self ! which countless possibilitys do you get in your hand.

- to save, locate and recovery of stolen moving-property and goods (Luxus-Cars, Yachts, Aircrafts etc.)
- to control of construction verhicles within geo-stockade
- to locate and deliverance of kidnapped persones.
- to locate of eloped pets (dogs, cats, horses etc.)
- to lifesaving at mount- and wintersport (avalanches)
- to emergancy-aid in case of car-crash.
- to position-request in vehicle-fleet (forwarding-trucks)
- in off-road sport activitys (hunts Mr. X or treasure hunt)
- to space-control in absence (Babysitter)
- to observe suspected persons in detective-work etc. Please read carefully this manual to avoid operating errors.

So you get many fun and steady Tracker's work.

**-Simplify your life-**





You need still a simple Pre-Paid- SIMcard.

### Technische Daten - Technical Specifications

Unit Size	64 x 46 x 17 mm
Weight	50g
Networks	GSM/GPRS
Frequenz Range	850/900/1800/1900 Mhz
GPS-Chip	U-BLOX 6 Chip
GSM/GPRS Modul	Simcom SIM300
GPS Sensibility	-159dBm
GPS Accuracy	5 mtr.
Time of response	45s / 35s / 1s
Operating temp.	-20°C - +55°C
Battery	Rechargeable 3.7V 860mAh Li-Io
Standby	ca. 80 hours
Car-Charger	Input / Output 12-24 Volt / 5 Volt
Wall-Charger AC / DC	110-220 Volt / 5 Volt

#### 2.1 Battery charge

Insert a battery into battery holder and connect him with wall-charger. To charge battery, connect wall-charger to power-point. The first charge-time take about **6-8 hours**. Recharge battery needs 2-4 hours only.

Battery is already charged if control-LED

on holder shines **green**.

#### **NOTE:**

- Recharge your battery if tracker send message "bat: L" (battery low)
  - Remove battery from Tracker if you dont use it for longer time.
  - dont discharge battery lower than 2.5 Volt, dont short circuit battery!
  - never open battery forcible, keep battery off from fire and heat sources!
  - Li-Io batterys inclose toxical substances, dont scrap battery into **domestic waste**
  - Use always batterys bought from your trader.
- A wrong battery can kill your Tracker.

## **2.2 SIM-Card installation**

**Important!! please attend**

Before install SIM-Card into your Tracker, please make sure, that all necessary settings are already done. So check this card to avoid command errors later.

Insert Tracker's SIM-card into your cell-phone and open menu "settings"

**Then following settings have to be done:**

- **PIN-Code request:** off
- **Send my Caller ID:** yes
- **Anykey answer:** off
- **Call diverts:** all deactivated
- **Call barring service:** all deactivated
- **Operator selection:** automatic
- **Fixed dialling:** off

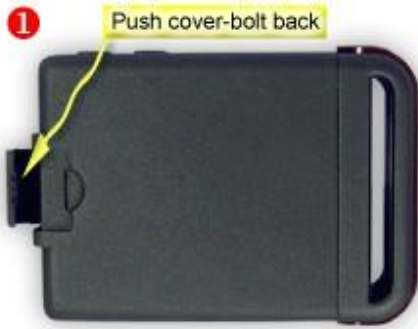
The most of Pre-Paid-Cards dont support some of above services, but they must be done in case you are using a treaty SIM-Card. (no pre-paid)

These settings are very important if you have intent to use your Tracker abroad.

**Please recognize:** a stolen car can be carried very speedily into foreign country. Your Tracker must be enabled to send message from foreign GSM- Network as well.

Now you can install your card as follow.

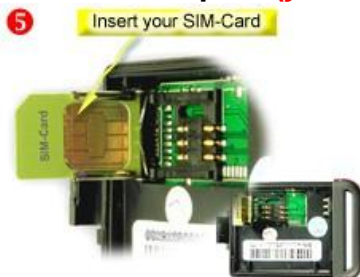
Unlock Tracker's housing (**Img. 1**) and remove rear cover (**Img. 2**)



Push card holder slightly back (Img. 3) and flip it open (Img. 4)



Insert your SIM-card into holder (Img. 5) and close it (Img. 6). Press card-holder careful down to snap in. (you must descry a silent "click" )



Insert your already charged battery and close the casing **Your GPS-Tracker is ready for action.**

### 2.3 First startup

In the following you get know the commands to remoted control of different operating modes, how to enable and disable them. The numbers "123456" relate to standard factory-password. You can also change this password later. It must obtain six digits.

**Attention:** Take down your new password.

In case your new passwort is lost, the operating system have to be remade.

**This service to remake OS is not for free and not covered by warranty.**

So consider also following matters:

- all commands have to be written in "**small**" letters
- dont write the sign + into the commands (edit out)
- instead of word "**space**" insert a space by your keyboard
- dont forget your password if you did change it

## 2.4 Initialization

Press On/Off button (ca. 5 sec) until signal-indicator is flashing quickly. Your Tracker needs ca. **10-40 sec.** to login on GSM- Network and to receive the first signal of satellites.

The Tracker is stand-by if the signal-indicator is flashing every 4 seconds. **Otherwise it keep to flash fast. (no sat-signal)**



**Note: The signal of satellites can be inside of buildings too low. Place your Tracker outdoor and try again.**

## 2.5 First start-command

Send now to your Tracker a SMS with following text:**begin+password.** Write:  
**begin123456**

Your Tracker replys: **BEGIN ok!** otherwise **BEGIN fail!**

Check if your text has been written correct.

**Use this command as well to reset your Tracker on factory-settings. Every old settings and admin-numbers will be deleted.**

## 3.0 Funktionen and commands: Overview

### 3.1 Change password (default password: 123456)

The password has to contain always six digits. for example: SMS to Tracker ==>

**password+old password+space+new password**

Your SMS looks as follow: **password123456 999888**

The new password is then **999888**

Reply from Tracker ==> **PASSWORD ok!**

**Please retain** in following on the **format-sample** to avoid write-errors

A wrong written command becomes never aktiv.

Save your commands as SMS-templates on your cell-phone, so are they everytime available if needed.

### 3.2 Authorisation.

In the operating system can be authorized up to 5 phone numbers  
Is one of these authorized numbers sending a command, so replies the Tracker only to this number.

**A SOS-Alert will be sent to all authorized numbers.**

SMS to Tracker==> **admin123456+space+phone-number**

Reply from Tracker: ==> **ADMIN ok!**

**Attend:** each additional number can be authorized only by the first authorized number (Master-Admin)

**To delete an authorized number:**

SMS to Tracker==> **noadmin123456+space+authorized number**

**Recognize:** you must add to each authorized number the pre-selection of your country. (Germany 0049) for example: **admin123456 00491754566544**

**Your Tracker will never send a message to you being abroad if you forget to add your pre-selection !!**

### 3.3 Startautomatic.

Authorize according point 3.2 the first number.

**Each time if you change the battery**, your Tracker switch on automatically. You can skip the step described in point 2.4 .

The signal-indicator flashes within 10-15 seconds and swaps to flash every 4 seconds once your Tracker receive the sat-signal.

To switch off press on/off button for ca. 5 sec.

### 3.4 Auto tracking.

Use this mode to trace remoted targets being in move. (for ex. stolen cars) You can get the positionsdata in predefined time-intervals (**min.20sec.**) and for n-times (**max. 255n**) for example:

Positionsdata every 50 seconds 5x. There the command:

SMS to Tracker==>**t050s005n123456** (t=time, s=seconds) or

Positionsdata every 30 Minuten 10x. There the command:

SMS to Tracker==>**t030m010n12345** (t=time, m=minutes) or

Positionsdata every hour 20x. There the command:

SMS to Tracker==> **t001h020n123456** (t=time, h=hours) etc. etc.

Positionsdata every hour at will. There the command:  
SMS to Tracker==> **t001h\*\*\*123456** (t=time, h=hours) etc. etc.

To disable this mode: SMS to Tracker==>notn+Passwort(**notn123456**)  
The time- and n-variables must contain 3 digits. for example **"t1h5n123456" = wrong!**

### 3.5 Real-time request.

For a single request of positiondata you need only to call your Tracker by one of authorized numbers. Wait 2-5 calls until your call will be rejected. This call will be for free and you get the positiondata within less seconds to your cell-phone via SMS.

### 3.6 Track and trace online.

To see precise position (up to 5 m.) in map of town, open the website <http://maps.google.com/> and enter just received coordinates as shown in the picture below.

Every SMS received from Tracker contain following dates:

lat:38.115833 long: 3.361389 speed:052.0 01/06/10 14:33 bat:F signal: F  
imei:2245554875545

lat=latitude, long=longitude, speed in km/h, Date, Time, Bat=Battery F=full, E=empty, signal: F=full, L=low and imei number

Enter the coordinates into maps-field of maps.google.com and click **"Maps-suche"** to get shown the position in the map.

1. latitude= 38.115833, then 2. longitude=13.361389 like in the picture below

Other dates are without importance.



### 3.7 Voice surveillance. (Baby-Sitter)



Use this mode to listen in the immediate environs of Tracker by integrated microphone. ( for ex. as Baby-Sitter) To spy or track the position of another persons without their approval is not allowed and can be penalty.

**Note:** The manufacturer and your trader dont assume any responsibility for criminal acts you trespass by using this Tracker.

SMS to Tracker ==> **monitor+password (for ex. monitor123456)**

Reply from Tracker==> **MONITOR ok!** Call now your Tracker to listen into room. **To restore tracking-mode:**

SMS to Tracker==> **tracker+password (for ex. tracker123456)**

Reply from Tracker==> **TRACKER ok! The Standard-Mode is "tracker"**

### **3.8 Movement alert.**

Use this mode to overlook movable objects being endangered to be stolen. Your Tracker sends "Move" alert and Geo-Info to authorized number (only one time in each setting) in case of movement.

***So you can sleep calmly in your hotel knowing you car in good hands.***

To enable this mode:

SMS to Tracker==>**move+password**

Reply from Tracker==> **MOVE ok!**

To disable this mode: SMS to Tracker==> **nomove+password**

### **3.9 Overspeed alert.**

There you get alert if the preset speed of target will be exceeded .

**Note:** avoid to preset speeds below 50 km/h expecting a precise result.

SMS to Tracker==> **speed+password+space+080**

Preset speed as example of 80 km/h . Reply from Tracker==> **SPEED ok!**

To disable this mode: SMS to Tracker==> **nospeed+password**

### **3.10 Request of IMEI.**

The **IMEI-Id** will be needed if you want use GPRS-Mode

This ID contain 15 digits:

SMS to Tracker==> **imei+password**

### **3.11 SOS-Button.**

Use SOS-Mode in case of emergency (for ex. fatal crash, assault, kidnapping etc)

**To send SOS-Alert press SOS-Button on Tracker for 3 sec.**

SOS-Alert "help me" will be sent to every authorized numbers containing Geo-Info at the same time. This alert will be repeated every 3 min. till been disabled by one of authorized numbers.

To disable this mode: SMS to Tracker ==> **help me!**

### 3.12 Geo-fence.

Using this mode you can fix a certain area being located within an intended square. You need the coordinates (latitude&longtitude) of the top left corner and the second coordinates (latitude&longtitude) of the bottom right corner. In following example we bedded the City Berlin into Geo-fence by using the coordinates of Seestrasse 10 and Treptower Parks.

**see image below: yellow frame.**

The coordinates are as follow:

Seestrasse 10==> **lat=52.543400 long=13.339770** and

Treptower Park==> **lat=52.488049 long=13.469857**

SMS to Tracker==> **stockade+password+space+latitude,longitude;latitude,longitude**

In this example we would send to Tracker following SMS: **stockade123456**

**52.543400,13.339770;52.488049,13.469857**



Your Tracker can freely move inside of this area but it sends an alert to you immediately just as deserted from him. Hereafter you can trace it by using the commands as described in points **3.3** and **3.4**

To determine needed coordinates of yours area please visit this Web-Site

[www.netzwelt.de/geocoding/index.html](http://www.netzwelt.de/geocoding/index.html)

To disable this mode: SMS to Tracker==> **nostockade+password**

**Remark:** The Tracker must be located within desired area before you send the geo-fence command. It must not be moved for 3 min. before.  
(for ex. must not be in driving car)

### 3.13 Low-Battery alert.

Your Tracker begins to alert when its Battery-Voltage is lower than 3.7 V. You get every 30 min. following SMS-Info: **low bettery+Geo-info.**

Change its battery or recharge it now. Dont let decharged battery in Tracker for longer time to avoid damages at it.

### 3.14 Hidden Number.

The Tracker can be called by any desired hidden number as well. But it replys indeed in this case to the first authorized nummber.

SMS to Tracker ==> **hide number+password**

To disable this mode: SMS to Tracker ==> **nohide number+password**

### 3.15 Time-Zone

Use this command if the clock-time your Tracker submits is wrong. SMS to Tracker ==> **time zone+password 2** (2 for Germany) Reply from Tracker: **TIME ok!**

### 3.16 SMS-Center

Use this mode if the Tracker schould reply to any other desired number. This mode can be indicated to trace a stolen car sending the target-position according points 3.3 or 3.4 directly to the police.

SMS to Tracker ==> **adminsms+password+space+number**

Reply from Tracker: **ADMINSMS ok!**

To disable this mode: SMS to Tracker ==> **noadminsms+passwort**

### 3.17 Trace the position via telefax

Use this mode to get the position-info to your telefax-number.

SMS to Tracker==> **adminsms+password+space+telefax-number**

Reply from Tracker: **ADMINSMS ok!**

To disable this mode: SMS to Tracker==> **noadminsms+password**

**Remark:** The service "**SMS in Fix-Network**" must be offered by your phone-provider. It has been tested successfully by Deutsche Telekom AG.

Check your telefax-device before by sending any one SMS to your fax- number. Every thing is alright if you get this SMS as telefax.

### 3.18 Shake-Sensor

Use this mode to get alert initiated by shake. Attach your Tracker on the front door to protect your house against intrusion. Hid your Tracker in your travelbag to be alerted by open. You get alarm before the wheels of yours car have been stolen. It is not necessary that the Tracker changes its position.

The sensibility of shake can be set up in levels 1-10 . Test the level of shake before to avoid wrong alerts.

SMS to Tracker ==> **shake+password+space+1-10**

for ex. **shake123456 5** (the digit 5 is for level 5) 1 is the lowest sensibility, 10 is for maximum sensibility.

To disable this mode: SMS to Tracker==> **shake+password+space+0**

### 3.19 GSM ID

Each SMS from Tracker contains also the GSM-ID . The Tracker can be found based on the GSM-Cell-ID in every case of no GPS-Signal.

### 3.20 Mobile Tracking

Apply this mode if you are using a cell-phone with internet-acces such as a PDA or similar. You get the position-info via SMS as Link to be conducted directly on **maps.google.com** where you can trace the position on the map.

You can also forward this link per SMS or e-Mail to another receiver if Internet just not accessible.

You can also track your own position being just abroad in unknow area. Following you can see how looks this Link to maps of Google.

<http://maps.google.com/maps?f=q&hl=en&q=52.516804,13.378198&ie=UTF8&z=16&iwloc=addr&om=1speed:000.0>

Click on this link to see a position in Berlin, Pariser Platz 1. To enable the mode **Mobile-Tracking:**

SMS to Tracker==> **smslink+password**

Reply from Tracker: ==> **SMSLINK ok!**

Call your Tracker now according point 3.4 to get its position as link.

To change into standard-mode: SMS to Tracker==> **smstext+password**

Reply from Tracker: **SMSTEXT ok!**

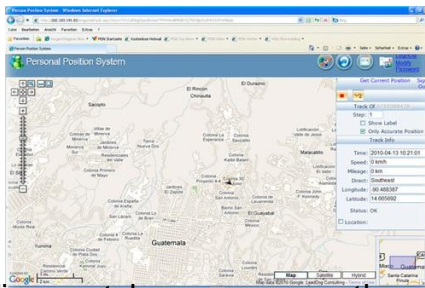
#### 4.0 Operating mode by GPRS

The GPS-Tracker TK-102 can also submit the position-info via GPRS (Internet) directly to your PC.

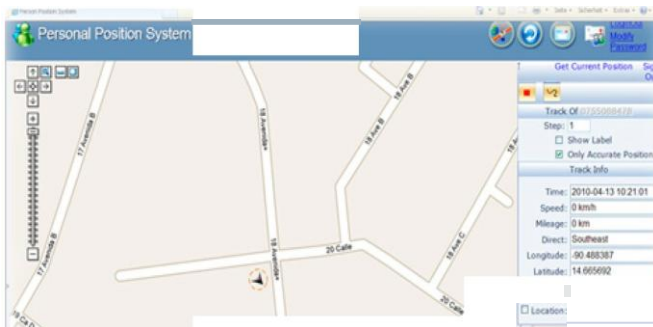
To operate by GPRS you need indeed a suitable Tracking-Software installed on your computer **or** an access to Tracking-Portal provided by your trader.

According with commands as descibed in point **3.3 / 3.4 / 3.7 / 3.8 / 3.10 and 3.11**, you can see, trace and evaluate the movement of every targets directly on your screen.

See also images below.



Working in online-portal you can move the map, zoom out, zoom in to see every details of the roads and address. Every coordinates will be currently displayed. Dependent of Tracking-Portal, still further more modes will be available.



Change to satellit-Image to see more envoronnement details.

In order to use GPRS-Mode you have still to send certain settings to your Tracker.

These settings are usually published on internet as well, you can also get them from manual of SIM-Card you scheduled to use with Tracker.

So you need following settings:

- APN (access point name)
- Username
- Password

Every provider are also publishing their access-settings on internet. Get them by going to [www.google.de](http://www.google.de) .

Enter into search-feeld : **apn + provider-name**

for ex. apn eplus, apn t-mobile, apn vodafone etc. etc.

#### **4.1 Here the commands for your Tracker: Note:**

To operate by GPRS-Mode use please the Internet-Explorer as of Version 6.0. only because another browser have not been tested.

The login by GPRS in the most countrys have to be made usually by using the user-name and password.

Otherwise you can skip them if not requested by your provider. SMS to Tracker==> **apn+password+space+your APN**

for ex. apn123456 internet.eplus.de

Reply from Tracker==> **APN ok!**

SMS to Tracker==>**up+password+space+GPRS user-name+space+UserPassword**

for ex. **up123456 eplus gprs**

Reply from Tracker==> **user,password ok**

The above settings in these examples are available for a Pre-Paid-Card emitted by ePlus and found under: <https://www.eplus.de/Mobile-Services/Handy-Einstellungen/Handy-Einstellungen.asp>

#### **4.1 Set up IP und Port**

For the IP-Address and Port-Number look please in the settings of your ADSL-Router and its manual if you install the Tracking-Software on your PC. .

The Port-Number is mostly 7070 and its forwarding must be activated Furthermore every transferprotocols such as TCP have to be allowed.

If your trader provides an Online Tracking-Portal and you have intent to use it so get all necessary settings from him.

Here the commands to set up the IP-Address and Port-Number:

SMS to Tracker==> **adminip+password+space+IP-Address+space+Port**  
for ex: **adminip123456 220.231.180.37 2332**

Reply from Tracker==> **ADMINIP ok!**

To disable IP and Port: SMS to Tracker==> **noadminip+password**

#### **4.2 Set up platform id**

The tracker should bind to platform ,then can sent data to platform.  
**id+password+space+mobile number**

for ex: SMS to Tracker ==>**id123456 13812345678**

Reply from Tracker==> **ID=13812345678 ok**

**4.3 hqwz123456** ==> to get current position in text mode.

**4.4 jw123456** ==> to get Longitude and Latitude of curent positon.

#### **4.5 Change mode SMS/GPRS**

The standard-mode is SMS. To change into GPRS Mode according point 4.2. SMS to Tracker==> **gprs+password**

Reply from Tracker==> **GPRS ok"! To change into SMS-Mode send: SMS to**

Tracker==> **sms+passwort**

Reply from Tracker==> **SMS ok!**

***Start Here. Make a Success !***

## GPS Personal Tracker (SRS-25AG)



### Features :

- ◆ Mini size: 43\*33\*16mm
- ◆ SMS tracking on mobile phone with a google map link to view current location on map on mobile phone screen
- ◆ Get absolute address by SMS
- ◆ Geo fence function
- ◆ Get configuration including: time of locator, track status, current power, current network signal, switch machine settings
- ◆ Get a map of position by WAP browser
- ◆ Tracking path in website
- ◆ Set timer switch on/off
- ◆ Set SOS call number
- ◆ Alarming by dialing the binding Mobile once the environment sound abnormal & sharp
- ◆ Alarming by SMS to the binding Mobile once the environment sound abnormal & sharp
- ◆ Long standby time 15 days

### Applications:

- ◆ Car Rental / Small Fleet Management
- ◆ Protection of the Child / elderly / disabled / pet, etc.
- ◆ Personal safety
- ◆ Tracking criminals
- ◆ Guard against prying house door and breaking car window

### Specifications:

Unit Size: : 43 x 33 x 16 mm

Weight: : 35g



Networks : GSM/GPRS  
GPS Accuracy : 5 ---200 meters  
Storage Temp. : -40°C - +85°C  
Operating Temp. : -20°C - +55°C  
Humidity : 5%--95% non-condensing  
Battery : Rechargeable 3.7V 500mAh Li-Io  
Standby : ca. 168 hours  
Operation Volt. : 3.7 Volt

**Accessories:**

Wall Charger  
USB Data Cable  
Battery

## GPS Watch (SRS-25W)



**Features:**

- ◆ Available with GPS/GPRS function and GSM/SMS/GPRS communication with a quick signal receiving speed
- ◆ High-sensitivity, new workmanship and the most advanced GPS chip
- ◆ Can track the holder by call or SMS
- ◆ SOS alarm

**Applications:**

- ◆ Monitoring the elderly/children
- ◆ Businessmen safety precautions
- ◆ Ideal for Camping, boating and other Outdoor Sports

**Specification:**

GSM Module : GSM 850/900/1800/1900 MHz Quad frequency

GPS Sensitivity : -163dBm  
GPS Center Frequency : L1, 1575.42MHz  
GPS Positioning Accuracy : 5-25m  
GSM Positioning Accuracy : 100-500m  
Speed Accuracy : <1s  
Warm Start : < 38s  
Hot Start : <1s  
Max. Altitude : 18000m  
Max. Speed : 515m/s  
Operating Temperature : -20---65°C  
Humidity : 5%---95%  
Voltage : Rechargeable 450mAh battery  
Power Supply : DC5V  
Standby Time : >48h  
Time Accuracy : Synchronous with GPS