

# RHAPSODY

Recumbent bathing system

ARJOHUNTLEIGH  
GETINGE GROUP



...with people in mind



## BATHING – A NATURAL WAY TO ENHANCE WELLBEING



The benefits of bathing, particularly for residents, are more than skin-deep. Bathing offers unique conditions for promoting a feeling of wellbeing – simply and naturally.

#### Feel clean

Having a bath is the most pleasurable way to take care of personal hygiene, and the right bath additives can help to keep skin in good condition.

#### Feel lighter

In the tub, the water takes the weight. You feel almost weightless. Moving stiff limbs becomes easier. Regular bathing helps to maintain mobility.

#### Feel better

Bathing is beneficial for residents, both physically and mentally. Immersion naturally stimulates the circulation system and soothes away stress.

#### Feel safe

Residents cannot gain the full therapeutic value of bath time unless they feel completely safe and at ease. As we age and mobility decreases, bathing in a conventional tub becomes more difficult and potentially hazardous. Elderly residents need a tub designed for their needs with safe solutions for access. Bathing supported by the right technology offers all residents the opportunity to enjoy the benefits – regularly and safely.



#### Optimum support

Rhapsody is compatible with a range of integrated transport and lifting aids that cover all resident mobility levels. The *Alenti* (left) is best for residents who experience difficulties getting into and out of the tub. *Miranti* (right) is designed for more dependent or totally dependent residents. *Bolero* and *Calypso* are also Rhapsody-compatible.



# A REFINED DESIGN WITH RESIDENTS IN MIND



The keyhole-shaped tub is a radical rethink of the conventional bath design. *Rhapsody* is specifically designed to meet the safety and comfort needs of residents and carers.

## The keyhole shape:

- provides ergonomically sound working conditions – it's easier for the carer to turn the resident for hair washing, etc.
- enhances patient comfort with optimum immersion and extra room for shoulders and arms.
- offers more space at the head end to enable problem-free docking with immersible aids such as the *Alenti* or *Miranti*.

## Height adjustability:

- allows the carer to always work at the correct height, thus avoiding strain. The tub is raised or lowered at the press of a button.
- enables smooth integration with height-adjustable mobile lifts.

## Features

- The tub is made of smooth, fibreglass-reinforced polyester and has a handgrip-shaped rim and smart protective blue strip.

- One of four user-friendly panels (see opposite page) houses the controls, conceals the disinfection shower handle when not in use, and stores liquids.
- Lockable compartment prevents unauthorised access to liquid containers.

## Comfort & convenience options

- Foot support/pillow package: extra resident comfort at both ends of the tub.
- Toiletry tray: keeps shampoo, bath oil, etc, within easy reach.
- Showering alternatives: fit the shower handle on the left or right of the panel, or add a second shower.

## DermaCare options

- Liquid dispensing system: instant or programmable built-in dispenser for: ArjoCare (shampoo & body wash) and ArjoOil (bath oil & skin conditioner) or ArjoSound (used with Hydrosound). *Arjo Dermacare* liquids are specially formulated for use with *Rhapsody*.

## Safety & protection options

- Auto-fill or Auto-fill Plus: fills the tub automatically while the carer collects the resident.
- Emergency lowering system: maintains capacity to lower the tub in the event of power failure.
- Water level sensor: prevents accidental use of disinfection system when bath is occupied.
- Disinfectant container warning: indicates when disinfectant is used up.

## BUBBLING WITH OPTIONS

### Hydromassage

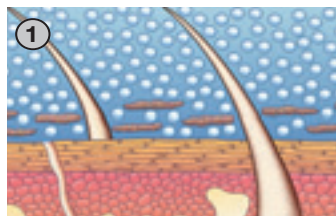
Hydromassage enhances the therapeutic and relaxing effects of bathing and is a pleasant experience for residents. The built-in *Rhapsody* hydromassage unit creates millions of small bubbles and agitation in the water which:

- increases stimulation of peripheral blood circulation.
- creates a deep heat effect which reduces pain and inflammation in the joints of rheumatoid arthritis sufferers.
- induces deeper relaxation that helps to diminish needs for sedatives and other medication.

A hydromassage session can be pre-set with a timer for personalised treatment, and the water/air blend is easily adjusted via a mixing valve. A treatment hose can be fitted to the system for localised hydrotherapy.



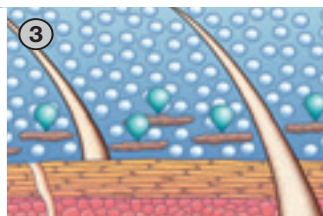
### Hydrosound



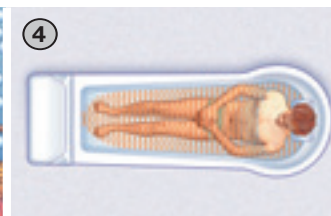
Hydrosound is an advanced system for cleaning sensitive skin. Ultrasound-generated bubbles gently massage away dirt.



Millions of jet streams, caused by imploding bubbles, remove dirt particles from the resident's skin and create a pleasurable tingling feeling.



ArjoSound, a liquid specially formulated for Hydrosound, contains a mild surfactant that ensures dirt does not redeposit on the skin or tub.



The resident is thoroughly cleaned – without scrubbing or manual washing – as the Hydrosound effect is evenly distributed in the water.

## ENSURE SYSTEM HYGIENE

Cross infections are a threat wherever hygiene facilities are shared, unless efficient cleaning and disinfection routines are in place. *Rhapsody* is designed to be simple to clean, with smooth surfaces and no potential contamination traps. Disinfection systems and hygiene features are available to ensure maximum protection against infection.

- Integrated disinfection system: cuts cleaning time and ensures thorough disinfection.
- Hydromassage disinfection system: also available in a fully automatic version.

ArjoClean: effectively combats bacteria and removes dirt and oils from the tub. This disinfectant and cleaning agent has been specially developed for use with *Rhapsody*.



## THREE MODELS AVAILABLE



### P200

With basic electrical functions, the P200 panel is also an economical option for incorporating Hydrosound or Hydromassage.

- Auto-fill function available



### P220

Provides a higher level of electrical control and convenience than the P200 such as:

- Touch-button controls Auto-fill
- Triple scalding protection
- Optional automatic Hydromassage Cleaning

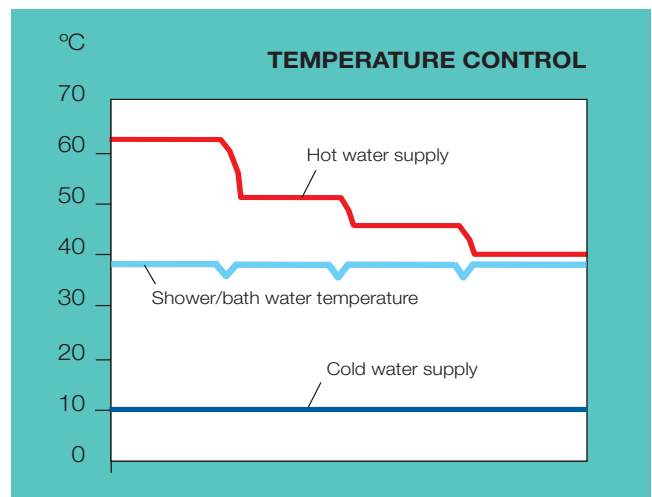
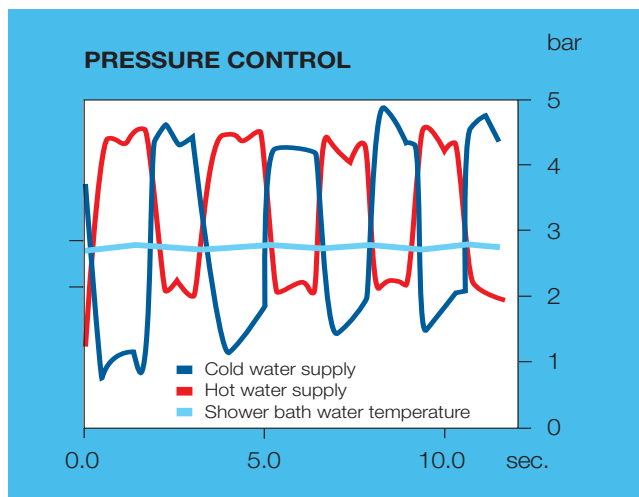


### P300

P300 offers the most advanced safety and comfort features available, including:

- Triple scalding protection
- Pre-programmed liquid dispensing system
- Digital adjustment of water temperature and Hydrosound
- Digital temperature display
- Disinfection container warning
- Automatic shut-off
- Auto-fill+, with three present levels

## AUTOMATIC PRESSURE & TEMPERATURE CONTROL



**The right water temperature and pressure are essential for safe and pleasant bathing.**

Pressure and temperature are regulated automatically during bathing and showering with *Rhapsody*, which means residents are protected against the sudden shock of cold water or hot water scalds. The regulation system works by rapidly compensating for any pressure fluctuations in the hot and cold water supply, while a thermostat ensures a constant showering and filling temperature.

## Feature Chart – ArjoHuntleigh Bathing System

Mobile Lift/Bath length	P200	P220	P300
Alenti/System 20	O	O	O
Alenti or Miranti/System 23	O	O	O
Miranti/System 25 (Rhapsody only)	O	O	O
<b>Treatment</b>			
Still bath	O	O	O
Hydromassage	O	O	O
Hydrosound incl.	O	O	O
- Digital adjustment	–	–	X
- Mechanical adjustment	X	X	–
<b>Safety &amp; Protection</b>			
Digital adjustment of bath water temperature	–	–	X
Digital adjustment of shower water temperature	–	–	X
Electrically motor operated mixer for precise temperature control	–	–	X
Electronic monitoring of bath & shower water temperature (anti scald)	–	X	X
Mechanical monitoring of bath & shower water temperature (anti scald)	X	X	–
Touch button control actions	–	X	X
Push button controlled actions	X	–	–
Manual adjustment of water temperature for bath and shower	X	X	–
Triple Scalding protection,	–	X	X
Double Scalding protection	X	–	–
Digital readout of water temperature for filling and shower	X	X	X
Digital readout of water temperature in the bath	X	X	X
Pressure & Temperature compensating Mixer	X	X	X
Auto-fill Plus – Three preset levels with possible afterfilling	–	–	X
Auto-fill – one level with possible afterfilling	O	O	–
Automatic shut-off of filling if drain is open	–	–	X
Electric wiring required	X	X	X
Emergency Lowering in case of power failure	O	O	O
Manufactured according to European and North American Safety Standards	X	X	X
<b>System Hygiene</b>			
Integrated Cleaning/Disinfection system incl.	O	O	O
- Automatic Disinfection contact time system	–	–	X
- Patient protection system (advanced)	–	–	X
- Patient protection system (simplified)	O	O	–
- Disinfection container warning	–	–	X
Automatic Hydromassage Disinfection system	–	O	O
<b>DermaCare</b>			
Pre-programmed dispensing system	–	–	O
Instant dispensing system (electrical)	–	O	–
Instant dispensing system (mechanical)	O	–	–
Connection hoses with adapted caps	X	X	X
<b>Comfort &amp; Convenience</b>			
Foot support/pillow package	O	O	O
Toiletry Tray	O	O	O
Standard or alternative shower position	O	O	O
Second shower handle	O	O	O
Treatment hose for Hydromassage with wall attachment	O	O	O
Pop up drain with built in overflow	X	X	X
Flexible drain package for floor or wall connection	X	X	X
Supplied with Installation/Assembly Instructions	X	X	X
Supplied with User's Manual	X	X	X
Supplied with Inservice Video, free of charge	X	X	X

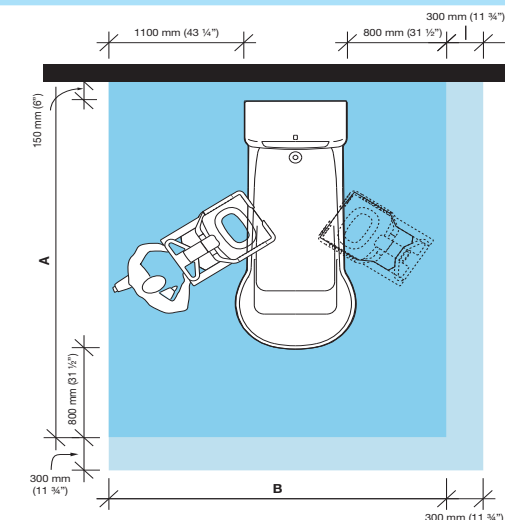
**O = Can be selected**

**X = Included**

**– = Not Applicable**

# PRODUCT SPECIFICATIONS

## Space requirement

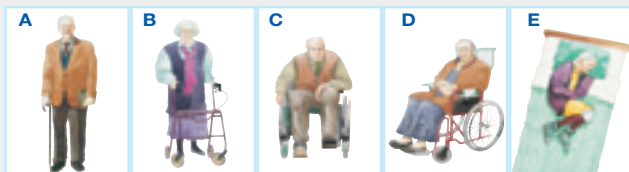


System 20	System 23	System 25
A=2895 mm (114")	A=3195 mm (125 3/4")	A=3445 mm (135 1/2")
B=2750 mm (108 1/4")	B=2750 mm (108 1/4")	B=2750 mm (108 1/4")

- Blue area shows the minimum working area required for the staff to be able to use the mechanical aids in an ergonomic way from one side.
- Light blue area shows required extension of working area to facilitate activities from either side to provide adequate access for the resident, mechanical aid and assisting carer.

## Mobility Gallery

Suitable for Albert, Barbara, Carl, Doris and Emma



- A Albert**, who is ambulatory and independent.
- B Barbara**, who can support herself to some degree.
- C Carl**, who sits in a wheelchair and has little capacity to support himself.
- D Doris**, who has no capacity to support herself.
- E Emma**, who is almost completely bedridden and totally dependant.

Please contact ArjoHuntleigh for further information on the Mobility Gallery™.

## Product information

System	20	23	25
Total weight*, kg (lbs)	390 (860)	470 (1036)	525 (1157)
Water consumption*, l	185	260	310
Filling time at 300 kPa dyn. pressure (WW 80°C)*, min.	3.00	4.50	5.25
Emptying time*, min.	3.00	4.50	5.25

## Water demands

Coupling (Hot water/Cold water)	G3/4" DN 20mm
Minimum pressure (Hw/Cw)	200 kPa
Maximum pressure (Hw/Cw)	600 kPa
Maximum Hw temperature	80°C (176°F)
Minimum Hw temperature	38°C (100°F)
Maximum Cw temperature	25°C (77°F)

## Drainage

The tub is equipped with a waste trap	50 mm (2")
Min. drainage capacity	100 l/min

## Electrical demands

Stillbath: 230 V single phase AC, 50 Hz, 500 VA (fuse 6 A slowblow)

Hydromassage: 230 V single phase AC, 50 Hz, 1200 VA (fuse 6 A slowblow)

Hydrosound: 230 V single phase AC, 50 Hz, 700 VA (fuse 6 A slowblow)

\* Completely filled without resident.

All products are CE marked.

Only ArjoHuntleigh designed parts, which are designed specifically for the purpose, should be used on the equipment and products supplied by ArjoHuntleigh. As our policy is one of continuous development we reserve the right to modify designs and specifications without prior notice.

ArjoHuntleigh, Rhapsody, Alenti, Bolero, Calypso, Miranti and Mobility Gallery are trademarks belonging to the ArjoHuntleigh group.

**ARJOHUNTLEIGH**  
GETINGE GROUP

...with people in mind

**ArjoHuntleigh Canada Inc.**  
90 Matheson Blvd West, Suite 300  
Mississauga, Ontario L5R 3R3  
CANADA  
Phone: 800-665-4831  
Info.Canada@ArjoHuntleigh.com

MEMBER OF THE GETINGE GROUP