



User Manual

Spend a little Live a lot.



SEMPRE®

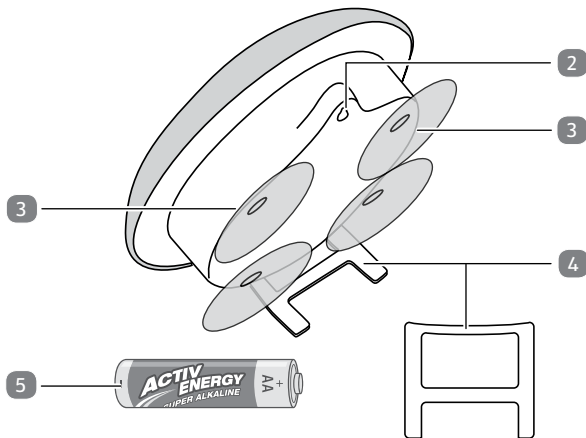
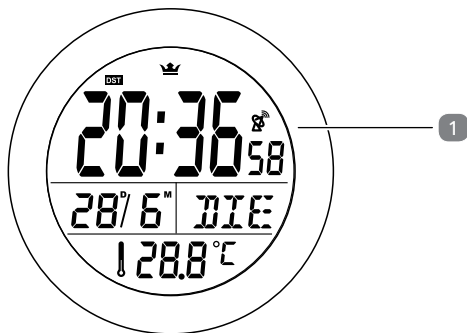
RADIO-CONTROLLED BATHROOM CLOCK

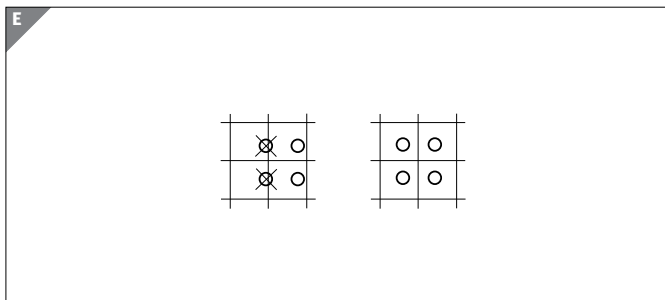
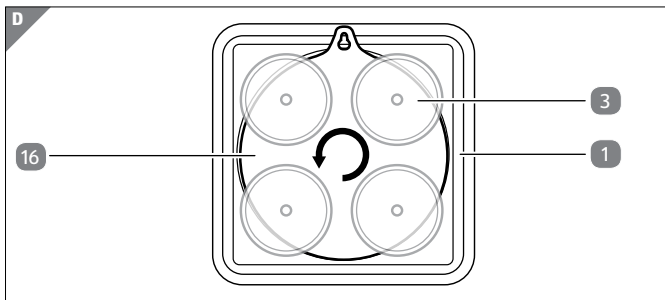
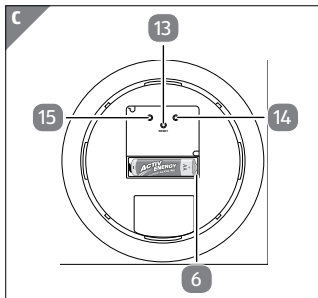
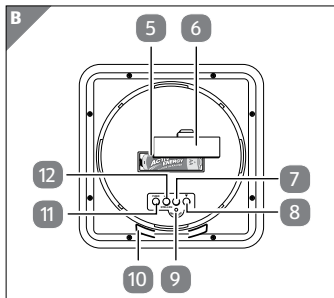


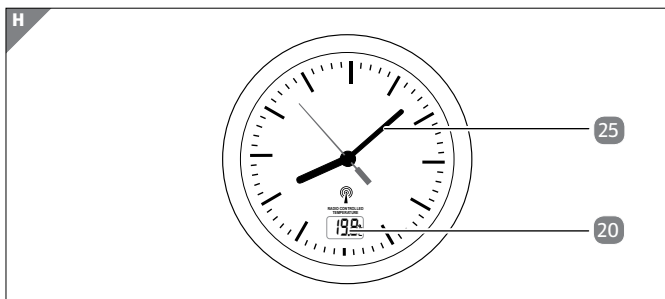
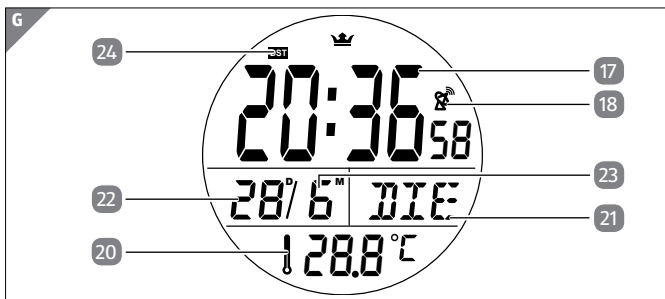
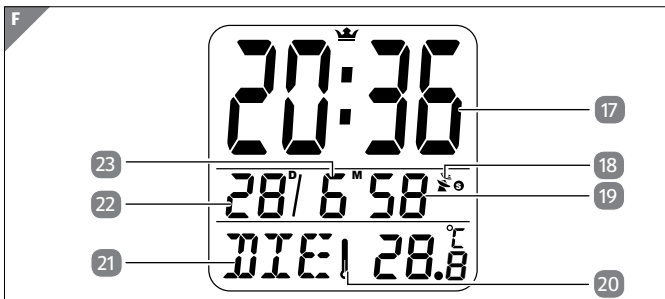
Contents

Overview	3
Use	4
Product contents/device parts	6
General information	7
Reading and storing the instruction manual	7
Explanation of symbols	7
Safety	8
Proper use	8
Safety notes	9
First use	13
Checking the clock and product contents.....	13
Installing/setting up the clock	14
Mounting the clock with the suction cups.....	14
Mounting the clock with the hanging loop.....	15
Setting up the clock with the support foot.....	16
Functions of the analogue/digital clock	16
Function keys	17
Start-up	19
Manual setting of the time	21
Manual synchronisation (analogue clock)	24
Changing the battery	25
Cleaning	26
Storage	27
Troubleshooting	27
Technical data	29
Declaration of conformity.....	29
Disposal	30
Disposing of the packaging	30
Disposing of old devices	30
Warranty card	33
Warranty conditions	34

A







Product contents/device parts

- | | | | |
|----|---------------------------|----|---|
| 1 | Housing | 14 | REC button |
| 2 | Hanging loop | 15 | M.SET button |
| 3 | Suction cup, 4x | 16 | Housing cover |
| 4 | Support foot | 17 | Current time |
| 5 | LR 6/R 6/AA 1.5 V battery | 18 | Radio tower symbol |
| 6 | Battery compartment | 19 | Current seconds |
| 7 | ▲ button | 20 | Current temperature |
| 8 | ▼ button | 21 | Current week day |
| 9 | RESTART button | 22 | Current date |
| 10 | Support foot holder | 23 | Current month |
| 11 | RADIO SIGNAL button | | DST/daylight saving time symbol (this is the equivalent to British Summer Time) |
| 12 | SET button | 24 | |
| 13 | RESET button | 25 | Hands |

ACTIV ENERGY

The product contents include one type LR6 1.5 V battery.

General information

Reading and storing the instruction manual



This instruction manual accompanies this radio-controlled bathroom clock. It contains important information on installation, set-up and use.

For improved readability, the radio-controlled bathroom clock will be referred to below simply as the “clock”.

Before using the clock, please read through the instruction manual carefully. This particularly applies for the safety notes. Failure to observe this instruction manual may result in severe injury or damage to the clock.

The instruction manual is based on the standards and rules in force in the European Union. When abroad, you must also observe country-specific guidelines and laws.

Store the instruction manual for future use. If you pass the clock on to third parties, please be absolutely sure to include this instruction manual.

Explanation of symbols

The following symbols and signal words are used in this instruction manual, on the clock or on the packaging.

 **WARNING!**

This signal word designates a hazard with moderate degree of risk which may lead to death or severe injury if not avoided.

⚠ CAUTION!

This signal word designates a hazard with low risk that, if not avoided, may result in minor or moderate injury.

NOTICE!

This signal word warns against potential damages to property.



This symbol provides you with useful additional information.

IP24

With protection against solid particles with a diameter of 12.5 mm or more and protected against water splashes on all sides.



Declaration of conformity (see chapter “Declaration of conformity”): Products marked with this symbol meet all applicable Community regulations for the European Economic Area.

Safety

Proper use

The clock is exclusively designed for use as a clock with additional temperature, month, day and date information. The clock is only intended for private use and not suitable for commercial purposes.

Only use the clock as described in this instruction manual. Any other use is considered improper and may result in damage to property.

The manufacturer or vendor accepts no liability for damage caused by improper or incorrect use.

Safety notes

Carefully read through this chapter and observe all notes herein. This will ensure that the clock operates in a reliable manner.

WARNING!

Danger for children and persons with impaired physical, sensory or mental capacities (e.g. partially disabled persons, older persons with reduced physical and mental capacities) or lack of experience and knowledge (e.g. older children).

- This clock may be used by persons with impaired physical, sensory or mental capacities or those lacking experience and knowledge if they are supervised or have been instructed in how to safely use the clock and have understood the risks associated with using it.

Children may not play with the clock.
Cleaning must not be performed by children.

- Keep children away from the clock.

⚠ WARNING!

Danger of suffocation!

If children swallow packaging or small parts, they may choke.

- Keep packaging parts and small parts away from children.

⚠ WARNING!

Danger of explosion!

If you dispose of batteries in an open fire or change them incorrectly, they may explode and emit toxic vapours.

- Only replace the batteries with the same or an equivalent battery type.
- Do not dispose of batteries in open fire and do not expose them to excessive heat (like direct sunlight).
- Dispose of the batteries as described in the chapter “Disposal”.
- Do not immerse the clock in water.

⚠ WARNING!**Risk of poisoning!**

If children swallow damaged batteries, the batteries could leak and result in poisoning or even death.

- Store the batteries in an area that is not accessible for children.
- If it is no longer possible to securely close the battery compartment, dispose of the clock as described in the chapter “Disposal”.
- If you suspect that a battery has been swallowed or otherwise incorporated, promptly consult a physician.

⚠ CAUTION!**Risk of injury!**

Using different types of batteries for the clock may increase the risk of the batteries leaking. Contact with damaged and leaky batteries may result in injury or chemical burns.

- Do not touch leaky batteries. If you do happen to come into contact with battery acid, wash the affected area thoroughly with plenty of clean water.

- To prevent the battery from leaking, do not charge it, do not disassemble it and do not short circuit it.
- Take the battery out of the clock as soon as it is empty.
- Only use batteries with the same output (see chapter “Technical data”).
- If necessary, clean the battery contacts as well as the contacts in the device.

NOTICE!

Risk of damage!

Improper handling of the clock may cause malfunctioning and damage the clock.

- Do not place any objects on the clock.
- Do not apply pressure to the glass.
- Keep edged objects away from the clock glass.
- Do not expose the clock to moisture other than that normally occurring in the bathroom.
- Do not expose the clock to temperatures below 10 °C and above 40 °C for prolonged periods of time.

- Keep the clock away from dust, heat, direct sunlight and strong percussions as well as magnetic fields.
- Do not open the housing, instead contact the manufacturer at the service address provided on the warranty card for repairs.
- When you are not using the clock, cleaning it or if a fault occurs, always switch the clock off by removing the battery.
- Never store the clock at temperatures below 0 °C or above 40 °C.

First use

Checking the clock and product contents

NOTICE!

Risk of damage!

The clock can be damaged if you incautiously open the packaging with a sharp knife or another pointed object.

- Be careful when opening.
 1. Take the clock out of the packaging.
 2. Remove the packaging material.

3. Check whether the delivery is complete (see **fig. A**).
4. Check whether the clock exhibits any damages.
5. If the delivery is incomplete or if the clock exhibits damage, do not use it; instead contact the manufacturer at the service address provided on the warranty card.

Installing/setting up the clock

You can choose from various possibilities for positioning the clock:

- Mounting the clock with the suction cups **3** (see **fig. A**),
- Mounting the clock with the hanging loop **2**,
- Setting up the clock on the support foot **4**.

Mounting the clock with the suction cups

Observe the following notes when mounting the clock with the suction cups **3** (see **fig. A**):

- Make sure that the base which you set the clock up on is free of dust and grease. If necessary, use a cleaner to clean the surface in advance.
- Set up your clock in a location where it cannot be damaged. **If the clock comes loose on its own and falls down, please keep in mind that broken glass is not covered by warranty!**
- Avoid fixing one of the suction cups directly over a tile joint as it will not be possible to create a vacuum here and the suction cup will not hold (see **fig. E**).

- The suction cups only stick to smooth surfaces.
- **From time to time, fix the clock again and check how secure it is as the suction cups may come loose after a while.**
- Do not mount the clock in the shower area as the clock is only protected against moisture. Excessive exposure to water could cause it to malfunction.
- Do not pull directly on the clock to loosen it. This will avoid defects affecting the device or the surface.

The clock's suction cups are suitable for attachment to smooth surfaces, e.g. tiles (the tiles must be glossy, the suction cups will not stick to mat tiles), mirrors and glass surfaces etc.

- Wet the suction cups somewhat before pressing them into place to ensure they are firmly attached.

Removing the suction cups

- Lift up the edge of the suction cups **3** one by one to let air in (see **fig. A**).

You can now take the suction cups off of the surface.

Mounting the clock with the hanging loop

If you are unable to mount the clock with suction cups, you can use the hanging loop **2** on the back of the cover (see **fig. A**).

- Hang the clock on a nail or a screw in a suitable location on the wall.

Setting up the clock with the support foot

You can also set up the clock with the support foot. It is located on the inside of the housing cover.

1. Unscrew the housing cover **16** by turning it counter-clockwise (see **fig. D**).
2. Take the support foot **4** out (see **fig. A**).
3. Close the housing cover.
4. Now insert the solid part of the support foot in the support foot holder **10** under the housing cover (see **fig. B**).

Functions of the analogue/digital clock

Analogue clock

- 2 function buttons (see **fig. C**):
M.SET button **15**, RESET button **13**, REC button **13**
- Time (radio time) **17** (see **fig. F and G**)
- Current temperature in °C **20**

Digital clock

- 5 function buttons (see **fig. B**):
FUNK (RADIO SIGNAL) **11**, STELLEN (SET) **12**, ▲ **7**, ▼ **8**, NEUSTART (RESTART) **9**
- RCC version: DCF 77

- Current week day **21** in 9 languages (see **fig. F and G**): Preset to German, other languages: English, French, Spanish, Italian, Dutch, Danish, Slovenian, Hungarian
- Current time displayed with 6 digits **17**: Hours, minutes, seconds **19**
- Calendar 2000 – 2099, current month displayed with 2 digits **23**, current date displayed with 2 digits **22**
- Switch between 12/24-hour format
- Temperature (°C/°F) **20**
- Current indoor temperature displayed with 3 digits, temperature range: -9.9 °C – +50 °C, measurement interval: 30 sec.
- Time zone setting, -12/+12 hours can be set
- Daylight saving time (DST) **24**

Function keys

Analogue clock

(see **fig. C**)

M.SET button 15	Manual setting of the time
RESET button 13	Restart
REC button 14	Starts receiving radio signals

Digital clock

(see **fig. B**)

Button

STELLEN
(SET) **12**

▲ **7**

▼ **8**

FUNK (RADIO
SIGNAL) **11**

Function

- Menu for setting the time (press and hold the button in normal mode).
- Select the settings menu (press the button once when setting the time).
- One step forward (press the button once/several times when setting the time).
- 8 steps/seconds forward (press and hold the button when setting the time).
- °C-/°F switch (press the button once in normal mode).
- One step back (press the button once/several times when setting the time).
- 8 steps/seconds back (press and hold the button when setting the time).
- OFF/ON RCC (press the button once in normal mode).
- Access the RCC reception menu (press the button once when setting the time).

Start-up



The radio-controlled clock should be at least 1.5 to 2 m away from interference sources like computer screens or television sets.



Avoid placing the clock directly up against or near metallic window frames.



In rooms with reinforced concrete walls (cellars, tower buildings etc.) the radio signal will become unavoidably weaker. In extreme cases, place the clock near a window and/or align it so that the front or back side points towards Frankfurt/M.

Analogue clock

1. Insert the battery **5** as described in the chapter “Changing the battery” (see **fig. A**).
2. The clock will switch to the express setting, that is, the hands **25** will move quickly and will line up at 12 o'clock position. The clock will now search for a radio signal (see **fig. H**).
3. If a radio signal is found, the hands will automatically be set to the correct time completing the process. This process may take up to 15 minutes.
4. If it is not possible to receive a radio signal, the hands will stay in the 12 o'clock position.

Digital clock

1. Insert the battery **5** as described in the chapter “Changing the battery” (see **fig. A**).
 2. After you have inserted the battery, LCD mode will appear and the clock will start looking for radio signals; this is indicated by the blinking radio tower symbol **18** (see **fig. F and G**).
Attention: No other settings can be performed during this time. This process may take approx. 2 – 5 minutes.
 3. Once a radio signal is received, the date and time will be set automatically. The radio tower symbol **18** is permanently visible (see **fig. F and G**).
 4. If it is not possible to receive the radio signal, the radio tower symbol will not be shown.
If you fail to receive a signal, observe the notes at the beginning of this chapter.
- As there are fewer atmospheric disturbances at night, the radio-controlled clock will in most cases receive a radio signal then. Generally speaking, synchronising the clock once a day is enough to keep the exact time.

To start searching for a radio signal again, proceed as follows:

1. Press the “FUNK” (RADIO SIGNAL) button **11** (see **fig. B**).
2. Press the “NEUSTART” (RESTART) **9** button.









If that doesn't work, remove the battery, wait approx. 30 seconds and then insert it again.

Now the clock will start looking for the radio signal again; once a signal is received, the hands/display will automatically move to the correct time. This process may take up to 15 minutes again.

Manual setting of the clock

Setting the time on the digital clock

If your clock is not able to receive the radio signal, you can set the time manually.

1. Make sure that the radio tower symbol  is not visible (see **fig. F** and **G**).
2. If necessary, switch radio reception off.
3. Press and hold the “STELLEN” (SET) button  for approx. 3 seconds to access the menu for setting the time (see **fig. B**).
4. Press the “STELLEN” (SET) button step by step to switch between the following menus: 12-/24-hour display, time zone setting, hours, minutes, year, month, language. Your settings will be automatically confirmed when you switch to the next menu.
5. Press the button   or   to increase or decrease the value shown by 1.
6. Press and hold the button  or  to increase or decrease the value faster.


The following two tables provide the days of the week as they appear on the clock's display.

	GE	EN	IT	FR
SUNDAY	SO	SU	DO	DI
MONDAY	MO	MO	LU	LU
TUESDAY	DI	TU	MA	MA
WEDNESDAY	MI	WE	ME	ME
THURSDAY	DO	TH	GI	JE
FRIDAY	FR	FR	VE	VE
SATURDAY	SA	SA	SA	SA

	DU	SP	HU	SO
SUNDAY	ZO	DU	VA	NE
MONDAY	MA	LU	HE	PO
TUESDAY	DI	MA	KE	TO
WEDNESDAY	WO	MI	SE	SR
THURSDAY	DO	JU	CS	CE
FRIDAY	VR	VI	PE	PE
SATURDAY	ZA	SA	SO	SO

Changing the language (digital clock)

You can adjust the language to display the current day in different languages

1. Make sure that the radio tower symbol  is not visible (see **fig. F** and **G**).
2. If necessary, switch radio reception off.

3. Press and hold the “STELLEN” (SET) button **12** for approx. 3 seconds to access the menu for setting the clock (see **fig. B**).
4. Press the “STELLEN” (SET) button 7 times to reach the language setting. The selected item will blink. The current week day will change to display the currently selected language (see table in chapter “Setting the time on the digital clock”).
5. Press the button ▲ **7** or ▼ **8** to switch between the available languages.
6. Press and hold the button ▲ or ▼ to increase or decrease the values faster.
7. Press the “STELLEN” (SET) button to confirm the setting. Your settings will be automatically confirmed when you switch to the next menu or wait for approx. 30 seconds

Changing the temperature format (digital clock)

You can adjust the temperature format to display the current temperature in °C or °F.

1. Make sure that the radio tower symbol **18** is not visible (see **fig. F** and **G**).
2. If necessary, switch radio reception off.
3. Press and the button ▼ **8** to switch between °C and °F.

Reception of radio signals

Please consider the following with radio reception:

- The clock will start receiving radio signals automatically as soon as a battery has been inserted.

- If your clock is not able to receive the radio signal, you can restart the attempt to receive a signal by pressing the “FUNK” (RADIO SIGNAL) button **11** (see **fig. B**).
- The radio signal will be automatically received at 1:00, 2:00, 3:00, 4:00 and 5:00 o'clock in the morning. If the signal is successfully received once a day, other radio signals present on the respective day will be ignored. The process will be repeated every day.
- Up to 15 minutes are required to receive the radio signal in the event of poor coverage. The clock will stop receiving signals once approx. 4 minutes have passed and the attempt to receive a signal extends beyond the signal coverage. The clock will stop attempting to receive radio signals after approx. 3 minutes in areas with strong signal coverage.
- Only the “FUNK” (RADIO SIGNAL) button may be pressed while receiving signals.
- If the clock fails to receive signals, the next attempt to receive signals will start at 1:00 a.m. the following day.
- If the daylight savings signal is received, daylight savings time and the DST symbol **24** will automatically appear (see **fig. G**).

Radio-controlled clock time

As described in the chapter “Start-up”, the hands/display of the clock automatically move to show the correct time once the battery has been inserted. This process may take up to 15 minutes.

Current temperature



If the clock is mounted on a wall, the temperature shown may be affected by cold or heat radiated from the wall.

Once the battery has been inserted, the temperature will be shown. However, it will take a short time to display the exact ambient temperature.

Setting the time on the analogue clock



The clock will automatically attempt to receive the radio signal several times a day. If this is not possible, the clock will continue to operate with the manually configured time.


If it is not possible to receive the radio signal, you can set the time manually. To do so, proceed as follows:

1. Press and hold the M.SET button **15** for approx. 5 seconds to access the manual settings mode (see **fig. C**).
2. Press the M.SET button to move the minute hand in an increment of one minute. Alternatively, you can press and hold the M.SET button to quickly move the hands ahead.

The clock will now continue to operate like a quartz clock.

Manual synchronisation (analogue clock)

You can only manually synchronise the radio clock time when the clock is operating (configured either as a radio clock or manually).

1. Press and hold the REC button  for approx. 3 seconds (see **fig. C**).
2. The clock will switch to the express setting, that is, the hands will move quickly and will line up at the 12 o'clock position. The clock will now search for a radio signal.
3. If a radio signal is found, the hands will automatically be set to the correct time completing the process. This process may take up to 15 minutes.
4. If it is not possible to receive the radio signal, the clock will continue to display the previously set time.

Use



Electromagnetic or atmospheric disturbances may interfere with the radio signal.

Changing the battery

Indications for a low battery are:

- The hands of the analogue clock stop moving.
- The display of the digital clock is dim or completely blank.

Proceed as follows to change the battery:

1. Unscrew the clock's housing cover **16** (see **fig. D**).
2. Open the battery compartment **6** (see **fig. B** and **C**).
3. Insert a new battery **5** in the clock according to the specifications of the chapter "Technical data". Make sure the polarity is correct. (see **fig. A**).
4. Close the battery compartment again.
5. Place the housing cover on the clock and turn the housing cover clockwise.

You can now continue using the clock.

Cleaning

NOTICE!

Risk of short circuit!

Water that has penetrated the housing may cause a short circuit.

- Never immerse the clock in water.
- Make sure that no water penetrates the housing.

NOTICE!

Risk of damage!

Incorrectly cleaning the clock may result in discolouration or damage to the surface of the clock.

- Do not use any gaseous or aggressive cleaners, brushes with metal or nylon bristles, sharp or metallic cleaning utensils such as knives, hard scrapers and the like.
1. Remove the battery **5** before you clean the clock (see **fig. A**).
 2. Wipe the clock off with a soft, damp, lint-free cloth.
 3. Dry the clock and, in particular, the glass thoroughly.

Storage

Prerequisite: You have removed the batteries.

- Store the clock in a dry, protected area at 0 °C to 40 °C.
- Refer to the chapter “Safety notes” with respect to storage.

Troubleshooting

Before you return the clock, check the battery and, if necessary, replace it with a new one.

The clock fails to receive a radio signal

If the clock does not receive a signal, try another location with better reception. Structures or natural obstructions (e.g. mountains) may disrupt the reception of radio signals or make it impossible to receive radio signals. Electro-magnetic or atmospheric disturbances may also interfere with the radio signal. In most cases, such disturbances can be resolved by selecting a different location. Please also observe the notes listed in the chapter “Start-up”.

Current temperature incorrect

Direct sunlight may affect the current temperature displayed. Please set the clock up in a location that is not exposed to direct sunlight. Heat/cold radiated from the wall may also affect the temperature shown.

Low battery

Replace the battery if the clock stops or if the display is too dim or completely blank. Always make sure that the polarity is correct when inserting the new battery. Once you have changed the battery, proceed as described in the chapter “Start-up”.

Suction cups do not stick

The surface which the clock is mounted on must be smooth and free of dust and grease. It is recommended that you use a cleaner to clean the surface beforehand. Observe the notes in the chapter “Mounting the clock with the suction cups”.

Incorrect time shown

- Restart the clock by taking the battery out and putting it back in.
- Alternatively, you can press the “RESET” button **13** or the “NEUSTART” (RESTART) button **9** on the back of the clock (see **fig. B** and **C**). The analogue clock will switch to the express setting, that is, the hands will move quickly and will line up at the 12 o'clock position. With the digital clock, all current data will appear and the radio symbol will blink.

Now the clock will start looking for the DCF signal and if a signal is successfully received, the hands/display will automatically move to the correct time (see **fig. F, G and H**). This process may take up to 15 minutes.

Technical data

Model:	BU03/BU04/BU06/BU07
Power supply:	1x 1.5 V DC ---, AA
Accuracy of the temperature reading:	+/-1 °C from 0 °C to +40 °C
Measurement range for temperature:	-10 °C to +45 °C
Temperature resolution:	0.1 °C
Article number:	92350

Declaration of conformity



R&TTE Directive 1999/5/EC

Short text for the declaration of conformity:
R. Schmidtmeister e. K. hereby declares that the Radio-controlled Bathroom Clock 04/05/06/07 complies with the fundamental requirements and other applicable provisions of the Directive 1999/5/EC. You can access the full text for the declaration of conformity on the **www.schmidtmeister.eu** website under PRODUCT INFORMATION.

Disposal

Disposing of the packaging



Dispose of the packaging separated into single type materials. Dispose of cardboard and carton as waste paper and foils via the recyclable material collection service.

Disposing of old devices

(Applicable in the European Union and other European states with systems for the separate collection of reusable waste materials)



Old devices must not be disposed of with household waste!

If at some point it is no longer possible to use the clock, each consumer is **required by law**

to dispose of old devices separately from their household waste, e.g. at a collection point in their community/borough. This ensures that old devices are recycled in a professional manner and also rules out negative consequences for the environment. For this reason, electrical equipment is marked with the symbol shown here.

Batteries and rechargeable batteries may not be disposed of with household waste!



As the end user you are required by law to bring all batteries and rechargeable batteries, regardless whether they contain harmful substances* or not, to a collection point run by the communal authority or borough or to a retailer, so that they can be disposed of in an environmentally friendly manner. Hand in the batteries at your collection point in a discharged state only!

* labelled with: Cd = cadmium, Hg = mercury, Pb = lead

IRE

GB



WARRANTY CARD

SEMPRES® BATHROOM RADIO-CONTROLLED CLOCK

Your details:

Name _____

Address _____



E-mail _____

Date of purchase * _____

* We recommend you keep the receipt with this warranty card.

Location of purchase _____

Description of malfunction:



Model example

Return your completed warranty card together with the faulty product to:

Sertronics UK
45 Regal Drive
Walsall Enterprise Park
Walsall
WS2 9HQ
UNITED KINGDOM

AFTER SALES SUPPORT



GB IRE

00800-98887000



service-uk@schmidtmeister.eu

Model: **BU03/BU04**
BU06/BU07

Product Code: 06/2015
92350

Free hotline

3

YEARS
WARRANTY



Warranty conditions

Dear Customer,

The ALDI warranty offers you extensive benefits compared to the statutory obligation arising from a warranty:

Warranty period: 3 years from date of purchase.

Costs: Free repair/exchange or refund.
No transport costs.

Hotline: Free hotline.

ADVICE: Please contact our service hotline by phone, e-mail or fax before sending in the device. This allows us to provide support in the event of possible operator errors.

In order to make a claim under the warranty, please send us:

- together with the faulty item the original receipt and the warranty card properly completed.
- the faulty product with all components included in the packaging.

The warranty does not cover damage caused by:

- **Accident or unanticipated events** (e.g. lightning, water, fire).
- **Improper use or transport.**
- **Disregard of the safety and maintenance instructions.**
- Other **improper treatment or modification.**

After the expiry of the warranty period, you still have the possibility to have your product repaired at your own expense. If the repair or the estimate of costs is not free of charge you will be informed accordingly in advance.

This does not affect your statutory rights.



Spend a little Live a lot.

Great care has gone into the manufacture of this product and it should therefore provide you with years of good service when used properly. In the event of product failure within its intended use over the course of the first 3 years after date of purchase, we will remedy the problem as quickly as possible once it has been brought to our attention. In the unlikely event of such an occurrence, or if you require any information about the product, please contact us via our helpline support services, details of which are to be found both in this manual and on the product itself.

GB

IRE

PRODUCED IN CHINA FOR:

ALDI STORES LTD. PO BOX 26, ATHERSTONE
WARWICKSHIRE, CV9 2SH

ALDI STORES (IRELAND) LTD.
PO BOX 726, NAAS, CO. KILDARE.
visit us at www.aldi.com

AFTER SALES SUPPORT



GB

IRE

0800-98887000



service-uk@schmidtmeister.eu

Model: **BU03/BU04**
BU06/BU07

Product code: **92350**

06/2015

3
YEARS
WARRANTY