



# **The EyeNalysis User's Manual**

**Document Revision 3.00.00**

# TABLE OF CONTENTS

<b>INTRODUCTION.....</b>	<b>4</b>
<b>SYSTEM REQUIREMENTS.....</b>	<b>4</b>
<b>GETTING STARTED.....</b>	<b>4</b>
<b>GENERATING REPORTS (DATA MINING).....</b>	<b>4</b>
1. <i>Open log file</i> .....	4
2. <i>Initializing data</i> .....	5
3. <i>Quick overview</i> .....	6
4. <i>EyeNalysis Main – Data Mining Query Interface</i> .....	7
4-1. <b>Who</b> .....	7
4-2. <b>When</b> .....	9
4-3. <b>Where</b> .....	11
4-4. <b>What</b> .....	12
4-5. <b>Report</b> .....	13
5. <i>Processing data</i> .....	14
6. <i>EyeNalysis Reports</i> .....	15
<b>PRINTING REPORTS.....</b>	<b>17</b>
<b>AUTO SCHEDULED REPORTS.....</b>	<b>18</b>
<b>LICENSE AGREEMENT.....</b>	<b>23</b>

**© 2000-2001 BAJAI Inc.**

Information in this documentation is subject to change without notice by BAJAI Inc. The contents of all material available in this document are copyrighted by BAJAI Inc. unless otherwise indicated. All rights are reserved by BAJAI Inc., and content may not be reproduced, disseminated, published, or transferred in any form or by any means, except with the prior written permission of BAJAI Inc. Copyright infringement is a violation of federal law, subject to criminal and civil penalties.

**Legal Notice and Disclaimer:**

BAJAI Inc. “including its employees and agents” assume no responsibility for any consequences resulting from the use of the information herein, or in any respect for the content of such information, including “but not limited to” errors or omission, the accuracy or reasonableness of factual or scientific assumptions, studies and/or conclusions, the defamatory nature of statements, ownership of copyright or other intellectual property rights and the violation of property, privacy or personal rights of others. BAJAI Inc. is not responsible for, and expressly disclaims all liability for, damages of any kind arising out of use, reference to or reliance on such information. No guarantees or warranties, including “but not limited to” any express or implied guarantees, warranties of merchantability or fitness for any particular use or purpose, are made by BAJAI Inc. with respect to such information.

**Third Parties:**

Reference herein to any specific commercial products, process, or service by trade name, trademark, manufacturer, or otherwise, does not constitute or imply its endorsement, recommendation, or favoring by BAJAI Inc. and such reference shall not be used for advertising or product endorsement purposes. Any or all websites used for example references only and may have trademarks or copyrights and should be considered as proprietary.

**Trademarks:**

BAJAI, the BAJAI logo, Iajabot, ProxEye, BajEye, EyeNalysis, EyeUpdate, EyeMail, OCULAR and “images, everything” are registered trademarks, slogans or trademarks of BAJAI Inc.

BAJAI Inc. may have patents or pending patent applications, trademarks, copyrights, or other intellectual property rights covering subject matter in this document. The furnishing of this document does not give any license to these patents, trademarks, copyrights, or other intellectual property rights except as a expressly provided in any written license agreement from BAJAI Inc.

# Introduction

BAJAI's EyeNalysis is a user-friendly management tool that is perfect for evaluating and reporting employee's Internet web use. The tool comes as part of the ProxEye package and is installed when you install ProxEye.

## System Requirements

To use EyeNalysis, your system should have:

1. An IBM compatible PC with 133 MHZ or higher processor recommended
2. Operating System that supports the Java Runtime Environment.
3. 64 MB of RAM
4. 20 MB of free hard disk space
5. VGA, Super VGA, or better display adapter at 1024 X 768 pixels resolution
6. Printer, color recommended.
8. Installation of JRE 1.3 or higher (JAVA Runtime Environment)

## Getting Started

To begin, you can start the EyeNalysis tool by finding the shortcut in the Start Menu, in the ProxEye area. You can find this shortcut here:

START→PROGRAMS→BAJAI→PROXEYE→EYENALYSIS

The icon for EyeNalysis:



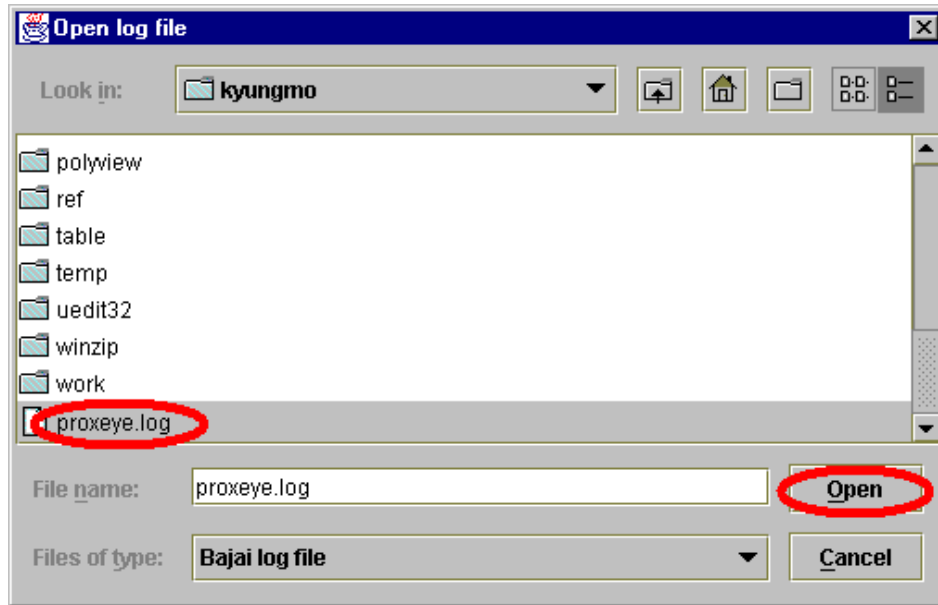
## Generating Reports (Data Mining)

This section will walk you through, step by step, the process of generating a report of Web usage. Each step contains screen shots and an explanation of the requirements for each stage in the process.

### 1. Open log file

Whenever you start EyeNalysis, open log file dialog box appears (Fig 1-1), asking you to select a log file. (Check your "proxeye.conf" file to get the name of log file. In this manual, we will use the name of log file as "proxeye.log").

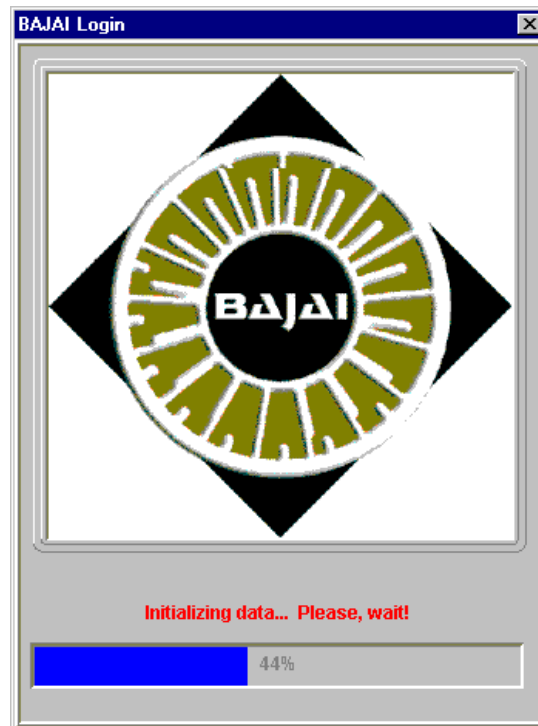
**Note:** It is important to ensure that you have selected the correct log file.



<1-1.Open log file dialog>

## 2. Initializing data

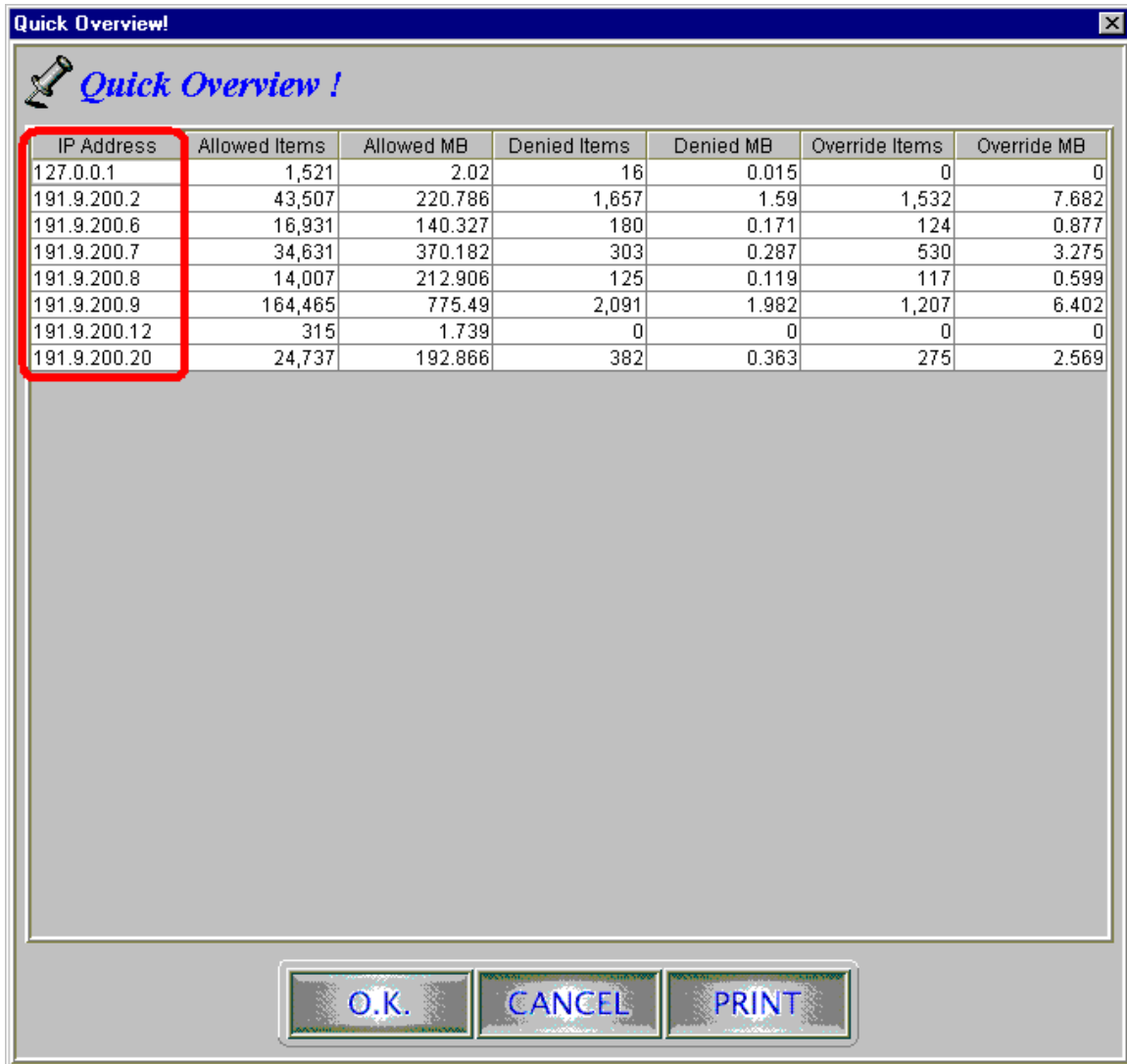
When you open the log file, EyeNalysis automatically initializes the data from the user selected log file. This process may take a few minutes depending on your system and the size of log file.



< 2-1 Initializing >

### 3. Quick overview

The “quick overview” of EyeNalysis reports all historical data in log file. This includes a report that is summarizing all Internet activities of all employees represented by all IP addresses at your company. Clicking a header of each column of the table will sort its column by ascending or descending order (See figures 3-1 and 3-2). The table is initially sorted by IP address in ascending order. Press ‘OK’ button to continue, ‘CANCEL’ button to quit, and ‘PRINT’ button to print the table.



IP Address	Allowed Items	Allowed MB	Denied Items	Denied MB	Override Items	Override MB
127.0.0.1	1,521	2.02	16	0.015	0	0
191.9.200.2	43,507	220.786	1,657	1.59	1,532	7.682
191.9.200.6	16,931	140.327	180	0.171	124	0.877
191.9.200.7	34,631	370.182	303	0.287	530	3.275
191.9.200.8	14,007	212.906	125	0.119	117	0.599
191.9.200.9	164,465	775.49	2,091	1.982	1,207	6.402
191.9.200.12	315	1.739	0	0	0	0
191.9.200.20	24,737	192.866	382	0.363	275	2.569

<3-1. Quick overview>

**Quick Overview!**

*Quick Overview!*

IP Address	Allowed Items	Allowed MB	Denied Items	Denied MB	Override Items	Override MB
191.9.200.9	164,465	775.49	2,091	1.982	1,207	6.402
191.9.200.2	43,507	220.786	1,857	1.59	1,532	7.682
191.9.200.7	34,631	370.182	303	0.287	530	3.275
191.9.200.20	24,737	192.866	382	0.363	275	2.569
191.9.200.6	16,931	140.327	180	0.171	124	0.877
191.9.200.8	14,007	212.906	125	0.119	117	0.599
127.0.0.1	1,521	2.02	16	0.015	0	0
191.9.200.12	315	1.739	0	0	0	0

O.K. CANCEL PRINT

<3-2.Table sorted by second column>

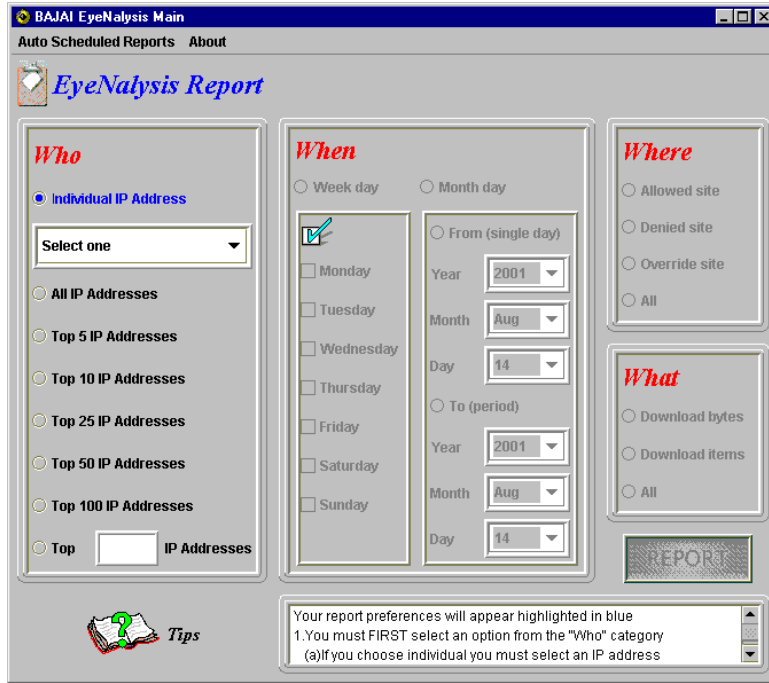
#### 4. EyeNalysis Main – Data Mining Query Interface.

With this interface, you can easily look for specific information you want. Using 4 basic categories (*who, when, where and what*) will help you to accomplish your search from the stored data. It is important that you go through the four query categories in order, starting with *who*, continuing through *when*, *where*, and then *what*. There is a help window in the lower right corner of the window (see fig 4-1) to aid you through the process.

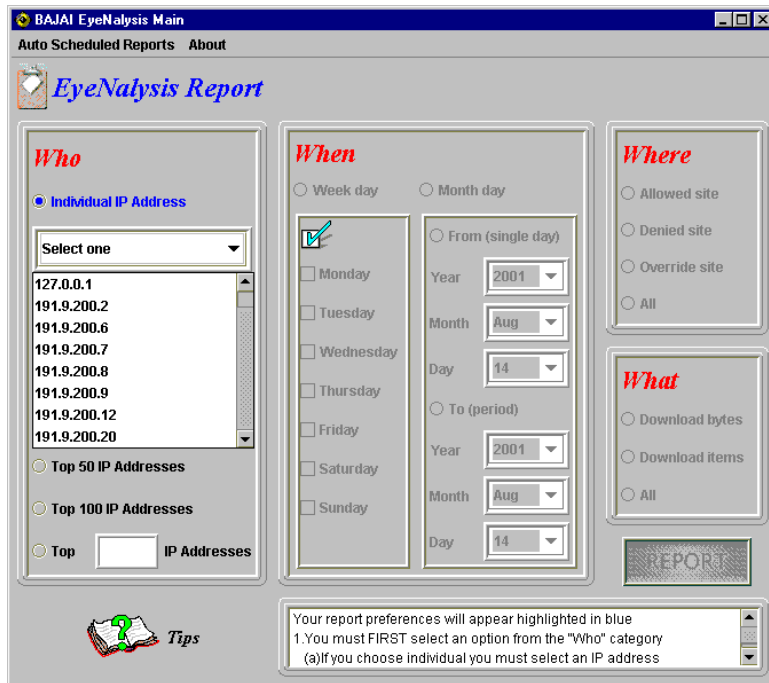
##### 4-1.Who

Who is the source of information you want? You can specify each individual IP address for your searching. You can also group Top number of IP addresses or all of IP addresses

at your company. Top number of IP addresses can vary depends on your choice of next following 3 categories. See figures 4-1, 4-2 and 4-3.

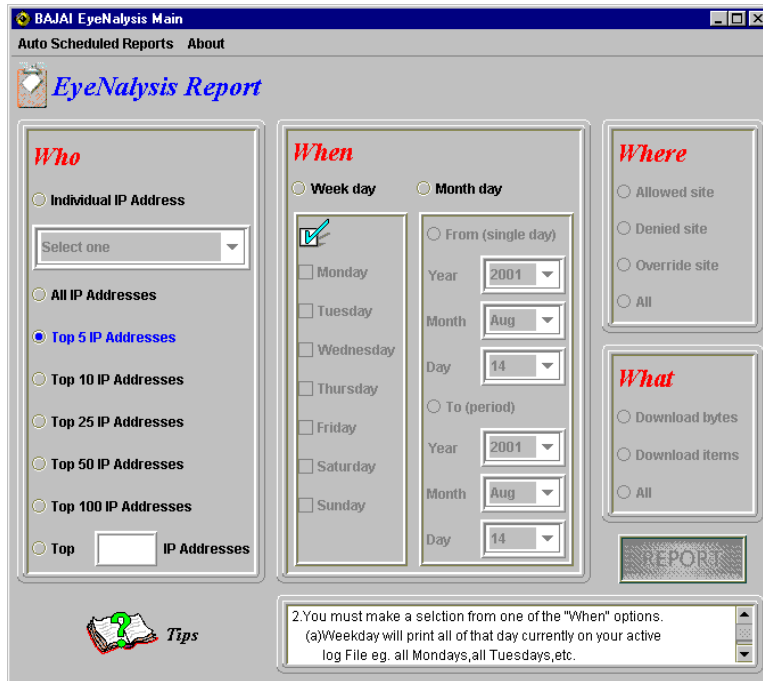


< 4-1. Who Category >



< 4-2. Individual selection >



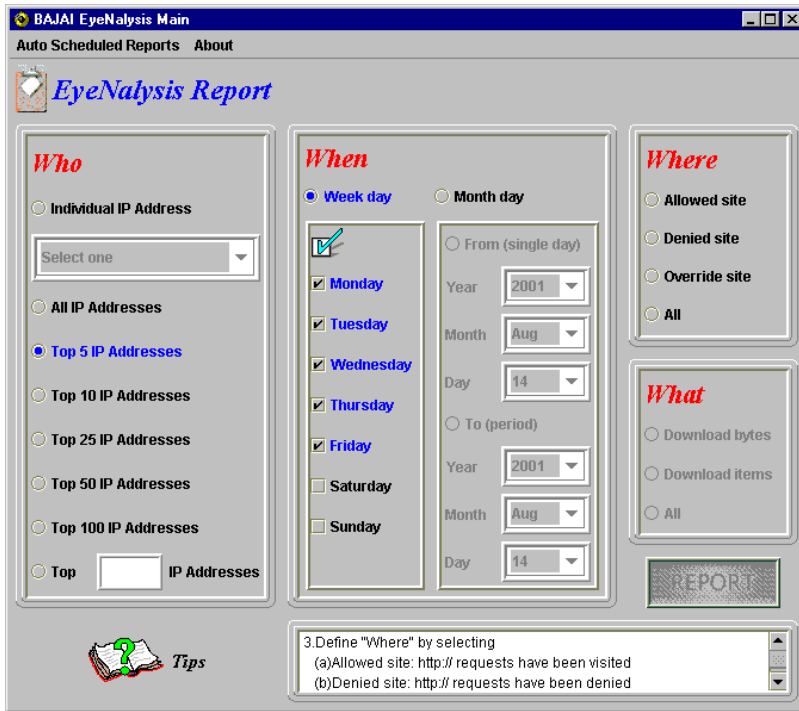


< 4-3. Top N selection >

#### 4-2. When

Which time period do you want to check? Since you are keep tracking the past Internet use of your employee defined in *who* category. If you are using an historical log file, obviously date ranges are applicable to the time span the log was generated. Since your employee's working hours may vary such as full or part time, shift work etc, you may select weekday search rather than doing fixed *month-day* search (figure 4-5). However, you may want to report regular business period such as yearly, quarterly, monthly, biweekly, weekly and daily. In this case, *Month-day* search is better solution for your regular report.

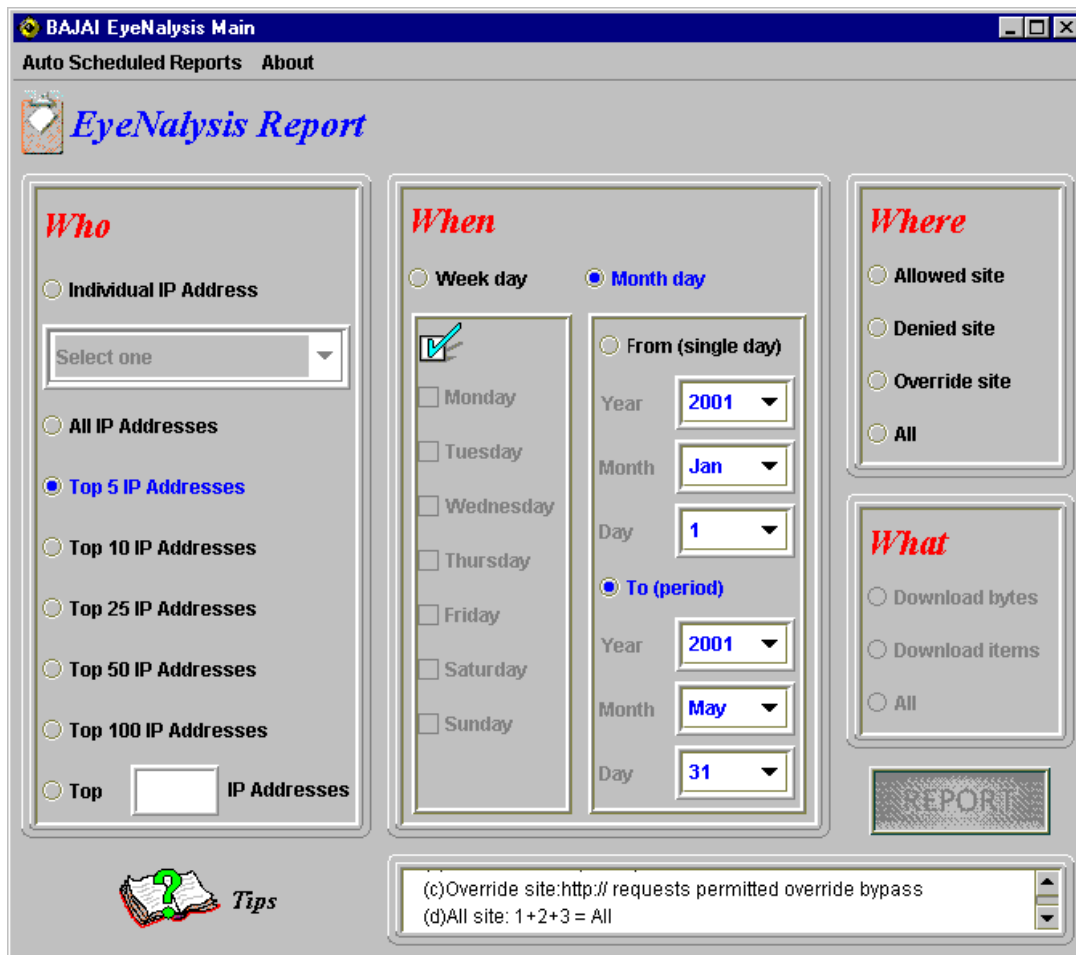
EyeNalysis interprets a selection of 'from' button as single day search and a selection of 'To' button as time interval that is between the day at 'from' box and the day at 'To' box.. See figure 4-5 and 4-6. When specifying a date range, the range must obey the natural laws of Physics, and the From date must be earlier than the To date. Should you decide to try to violate the fundamental laws of physics, EyeNalysis will not allow you to continue until time is back in order.



< 4-4. When Category >



< 4-5. Month selection of Single day >

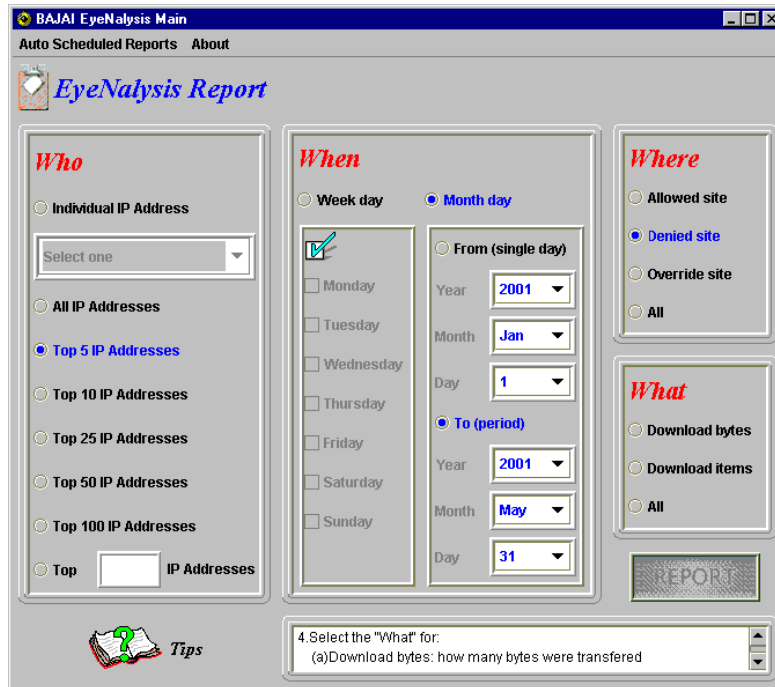


< 4-6. Interval time – From Jan 1, 2001 To Mar 31, 2001 >

### 4-3. Where

The where category (fig 4-7) allows you specify the reporting activity of allowed, denied and override accesses. BAJAI classification lists categorize web sites on the Internet, while your system administrators define blocked or allowed sites. The level of accessibility to the site is defined by your company's Internet policy and the configuration of ProxEye. If this is unclear, please consult your system administrators or the ProxEye manual for details.

- Allowed site: HTTP request is allowed.
- Denied site: HTTP request is denied.
- Override site: HTTP request overridden after the first denied request, and subsequent requests to that domain from that person.



<4-7.Where Category>

#### 4-4.What

You may evaluate your employee's Internet use in terms of *Download Bytes* or *Items*.

*Download Bytes* represents how many bytes have been transferred from the sites your employee had visited during their Internet use.

*Download Items* represents how many items have been transferred from the web sites during your employee's Internet use.

The screenshot shows the 'BAJAI EyeAnalysis Main' application window. The title bar includes 'Auto Scheduled Reports' and 'About'. The main area is titled 'EyeAnalysis Report' and is divided into four sections: 'Who', 'When', 'Where', and 'What'.  
**Who:** Radio buttons for 'Individual IP Address', 'All IP Addresses', 'Top 5 IP Addresses' (selected), 'Top 10 IP Addresses', 'Top 25 IP Addresses', 'Top 50 IP Addresses', 'Top 100 IP Addresses', and 'Top [ ] IP Addresses'. A dropdown menu is set to 'Select one'.  
**When:** Radio buttons for 'Week day' and 'Month day' (selected). Under 'Week day', 'Monday' is checked. Under 'Month day', there are two sub-sections: 'From (single day)' with Year: 2001, Month: Jan, Day: 1; and 'To (period)' with Year: 2001, Month: May, Day: 31.  
**Where:** Radio buttons for 'Allowed site', 'Denied site', 'Override site', and 'All' (selected).  
**What:** Radio buttons for 'Download bytes', 'Download items' (selected), and 'All'.  
 A 'REPORT' button is located at the bottom right. A message box at the bottom states: '5. You must now select "Report" to view your report'. A 'Tips' icon is at the bottom left.

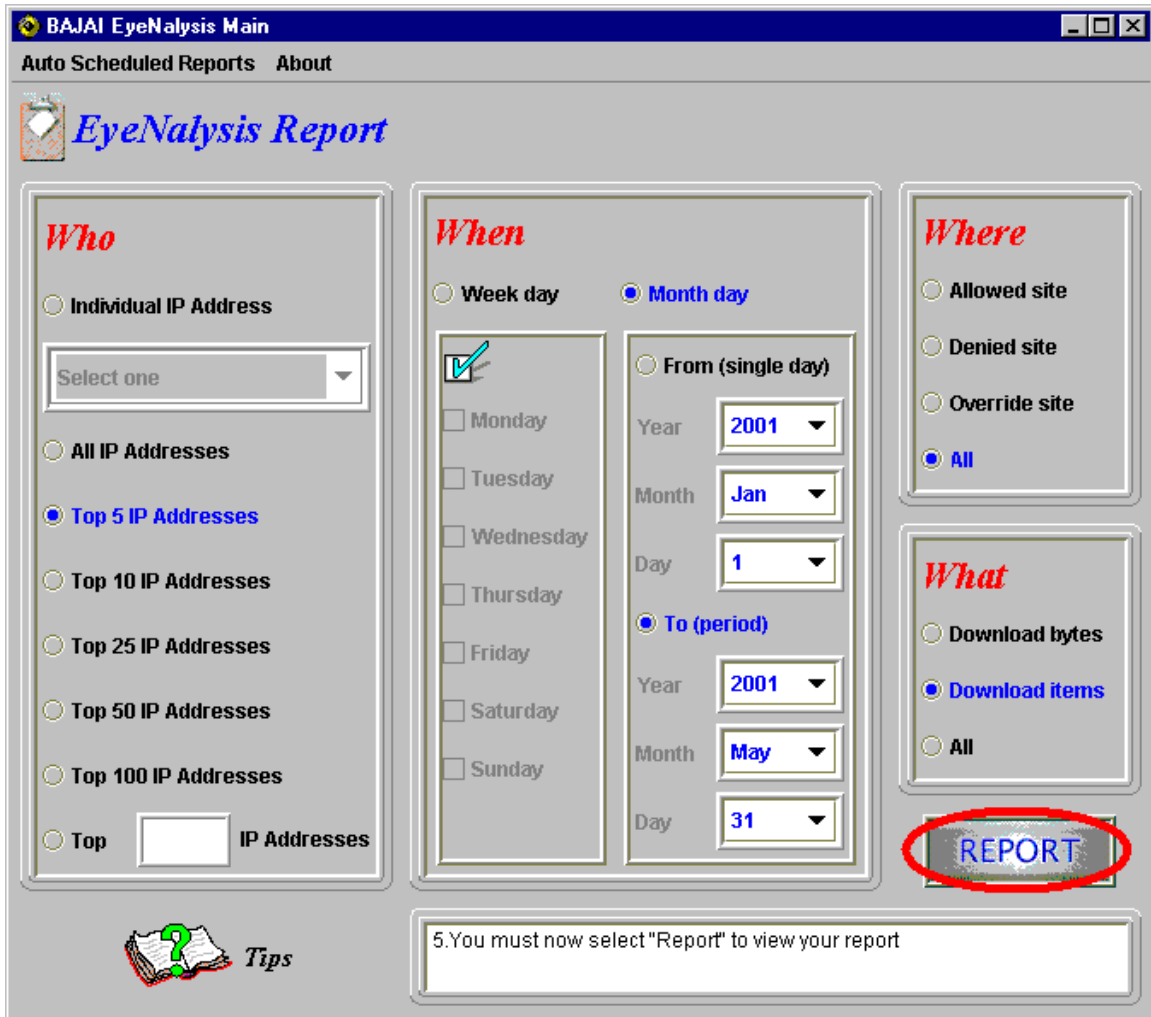
<4-8.What Category>

#### 4-5. Report

Before moving to next step, you should check your selections again and make sure the search criteria you specified are representing the purpose of your search. For example, for the settings in figure 4-8, my goal is to report on the top 5 various IP addresses for the 3 possible combinations such as:

- allowed site with download items
- denied site with download items
- override site with download items

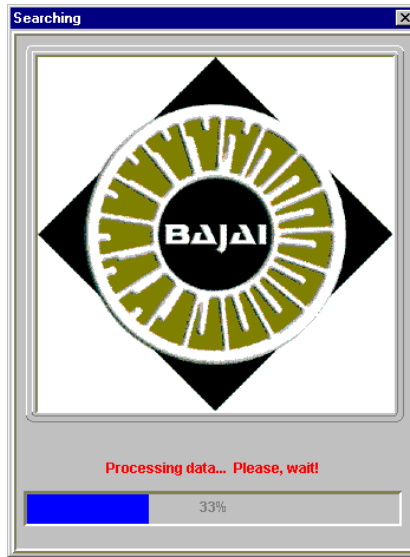
during working days from Jan 01, 2001 until May 31, 2001.



<4-9. Report >

## 5. Processing data

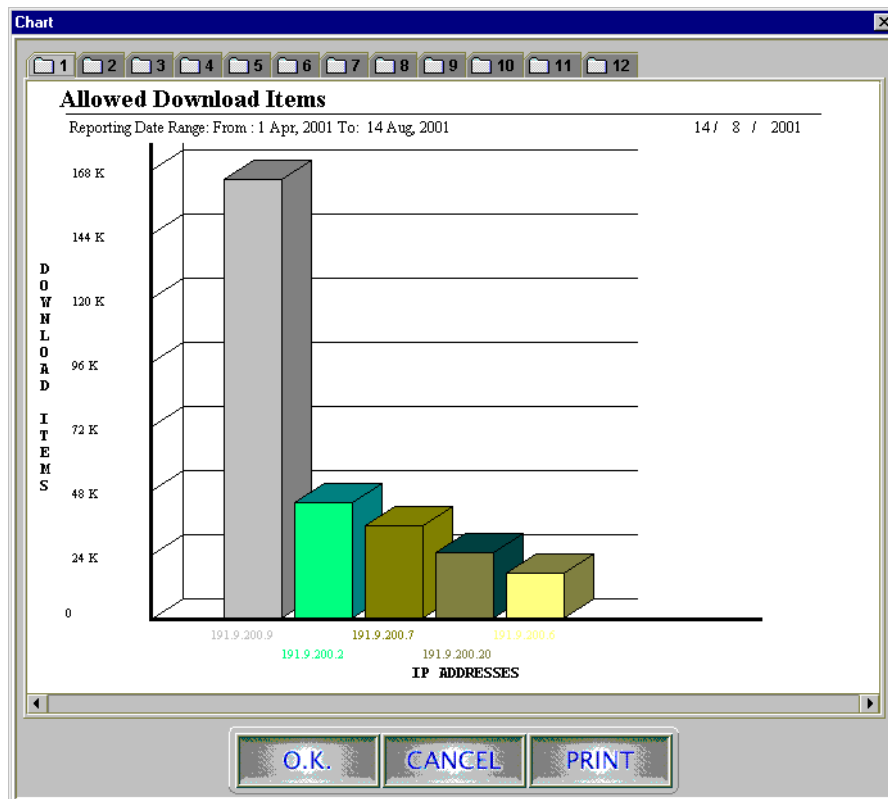
When you press the 'report' button, EyeAnalysis begins automatically processing the data with given search criteria. This process will take few seconds to a few minutes depending on your system speed and the size of log file. A progress bar will indicate how much of the request is processed.



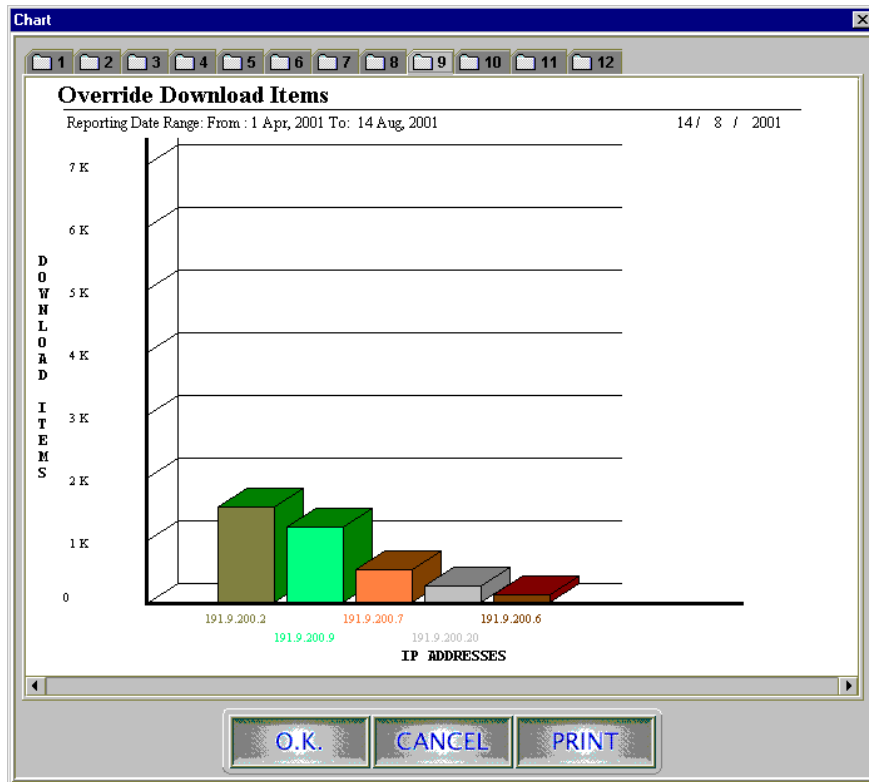
<5-1. Processing >

## 6. EyeNalysis Reports

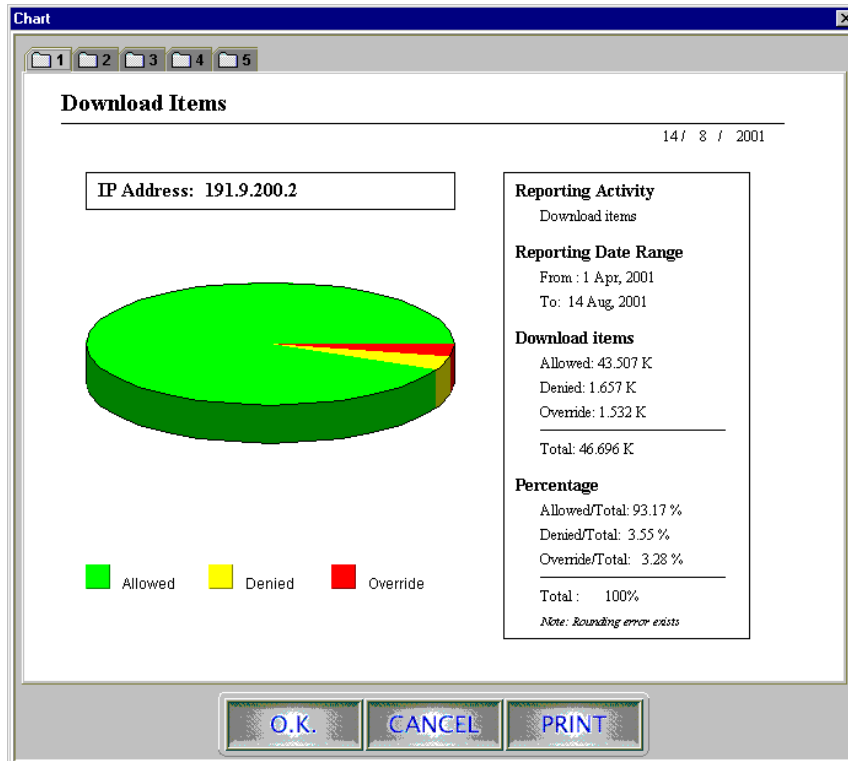
After processing the data, EyeNalysis will generate several reports that detail the information you specified in the query interface. In general, a graph comes first and the associated table for the graph will follow. See figures 6-1 to 6-4.



<6-1. Bar chart for allowed download items>



<6-2. Bar chart for override download items >



<6-3. Pie chart for download items >

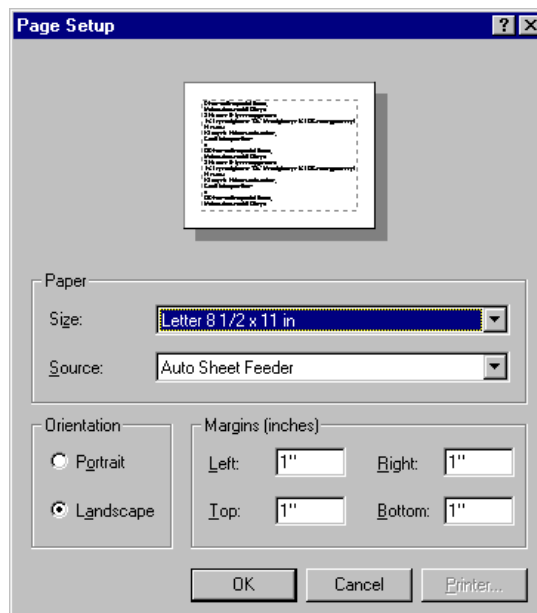


URL	Hits
pv1fd.pav1.hotmail.msn.com	11776
www.surfcontrol.com	10017
home.netscape.com	8629
www.websense.com	5667
cbc.ca	5323
windowsupdate.microsoft.com	5219
graphics.nytimes.com	4864
www.bajai.com	4804
www.cnn.com	4302
www.ottawacitizen.com	4196
www.nationalpost.com	3947
www.google.com	3873
h.msn.com	3198
i.cnn.net	3066
www.scs.carleton.ca	3055
www.nua.ie	3037
www.globetechnology.com	2993
www.carleton.ca	2743
arc5.msn.com	2734
arc7.msn.com	2456
a799.ms.akamai.net	2357
www.gc.ca	2317
a.r.tv.com	2287
www.media-awareness.ca	2255
www.usatoday.com	2247
rtnews.globetechnology.com	2168
www.microsoft.com	2007
www.fyiottawa.com	1945
www.globeandmail.com	1918

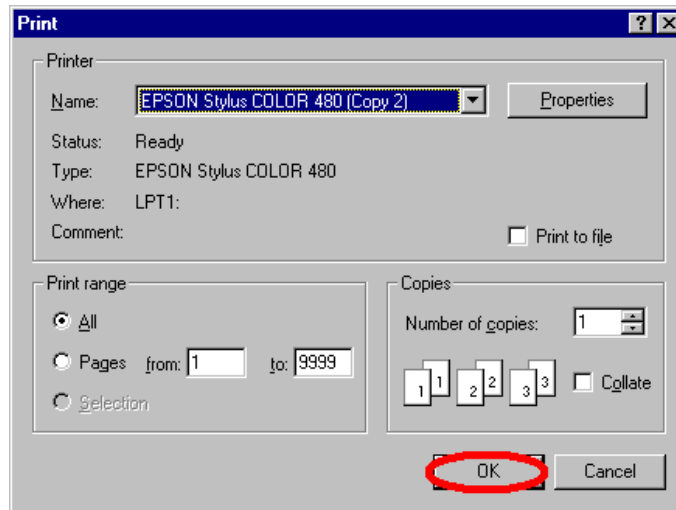
<6-4. Visited Site list (Allowed) >

## Printing reports

You can see the 'PRINT' button at the right bottom of the window. When you press the print button, the following page setup dialog box will open. Since there are different printing facilities from the user to user, we highly recommend the size of paper should be **letter 8 1/2 \* 11** inches and orientation of page should be **landscape**.



<7-1. Page dialog (Windows NT4.0) >



<7-2.Pint dialog (Windows NT4.0) >

## Auto Scheduled Reports

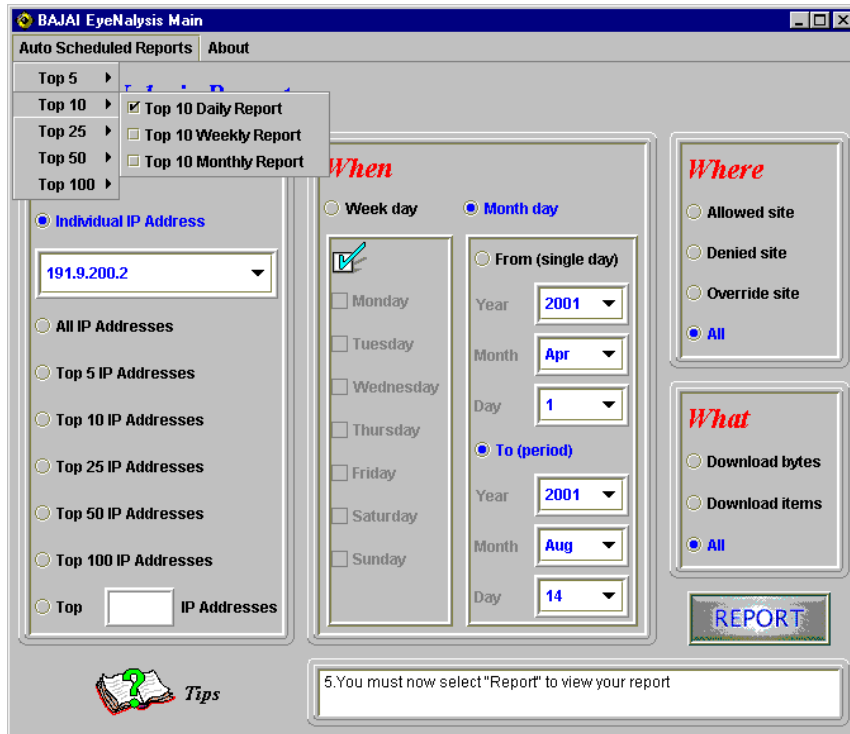
You may want EyeNalysis to generate a report on a regular basis, even though you are not present in the office. To satisfy this need, EyeNalysis allows auto-scheduled tasks. Moreover, EyeNalysis supports multiple scheduled generation of reports at any time you want, so you can set up at most 15 scheduled reports with few mouse clicks. The following illustrates how typical use of auto scheduled task such as Top 10 Daily report, Top 50 Weekly report, Top 100 Monthly report is configured.

To get the reports, configuration of both EyeNalysis and your O.S (operating system) is required. In Linux or other UNIX variants, a cron job will need to be set up (see the man pages for more information about cron). In Windows, you will need to use the task scheduler.

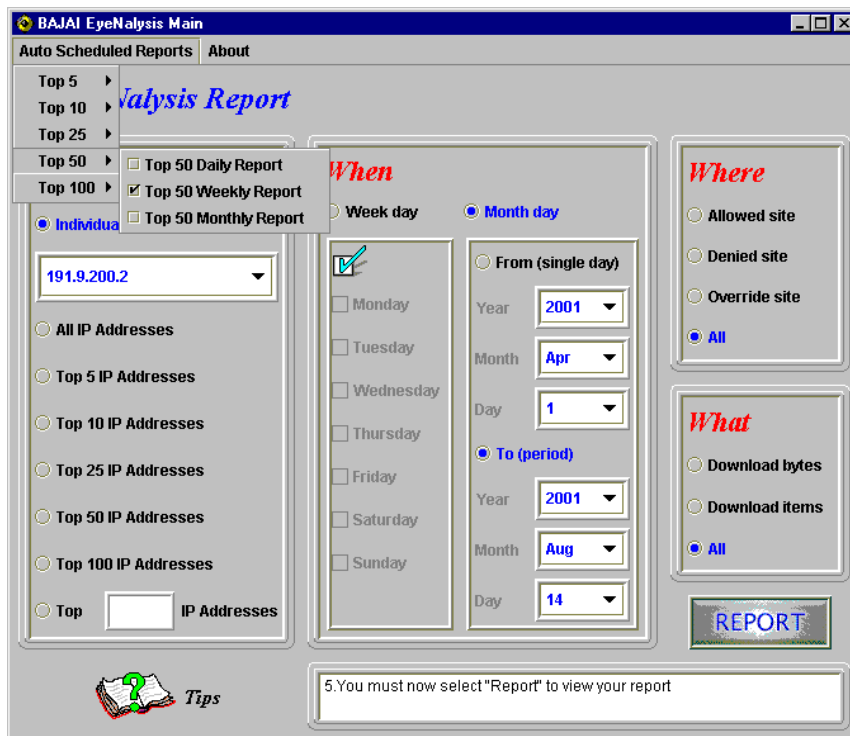
Illustrate 8-1 to 8-3 explains how to set up your auto scheduled tasks for EyeNalysis and 8-4 to 8-6 displays the configuration of a Scheduled Task on Windows NT 4.0 (For more details, check your Windows Manual or OS Manual).

As shown in figure 8-4, there are three brand-new batch files, T10DR.bat, T50WR.bat, and T100MR.bat in the EyeNalysis folder. Each of batch files has a different set of reporting criteria, so you will require 3 scheduled tasks on your OS.

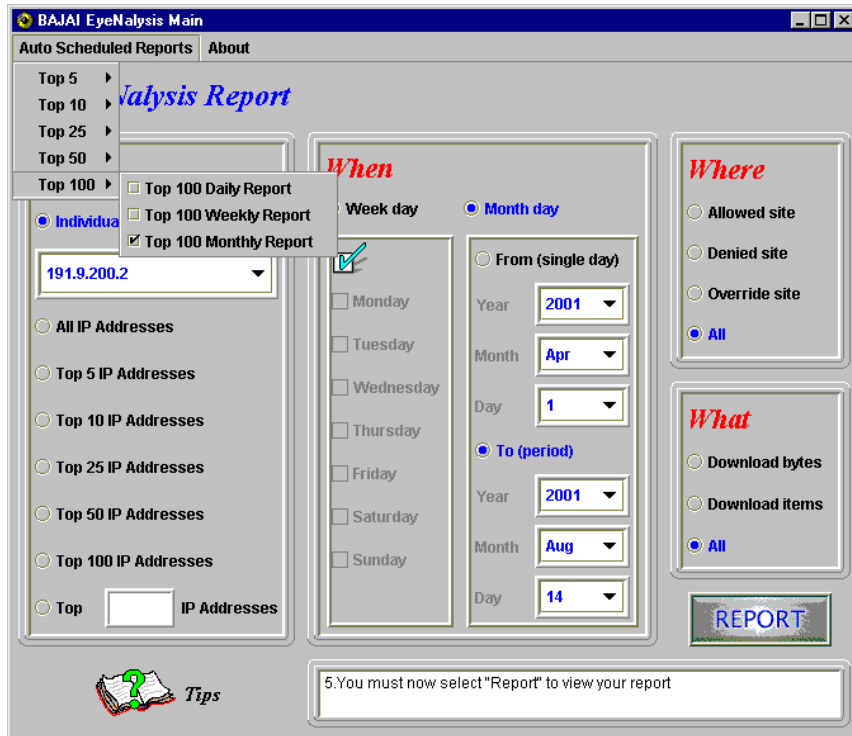
For example, T100MR.bat is a criteria file for Top 100 Monthly Report. You must go through the process as shown in figures 8-5, and 8-6 to set up T100MR.bat file. At the first day of every month (exactly 2 A.M), EyeNalysis will automatically generate Top 100 Monthly Report. Same configuration processes are required for the other



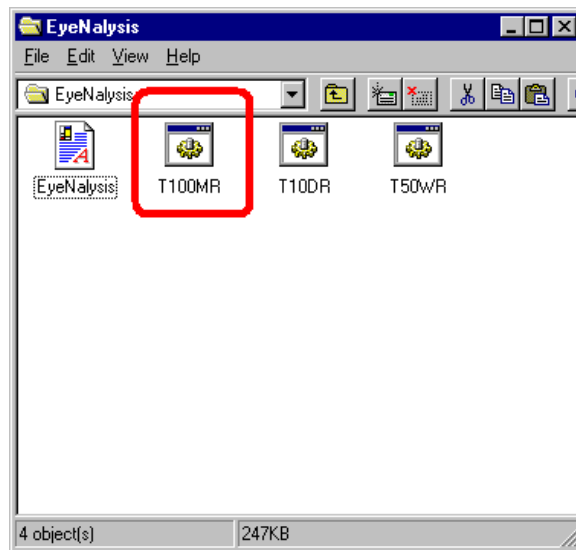
<8-1. Top 10 Daily Report >



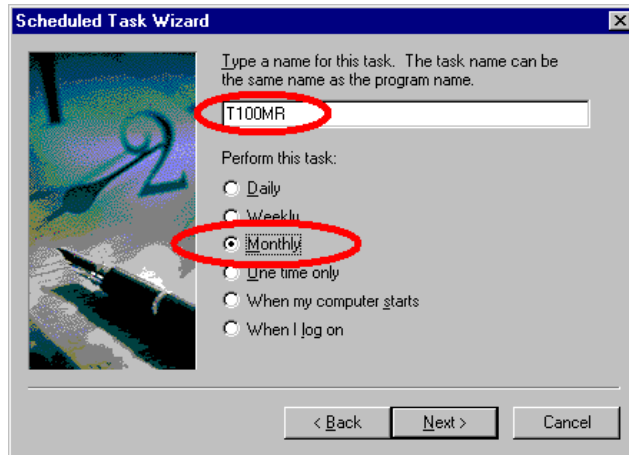
< 8-2. Top 50 Weekly Report >



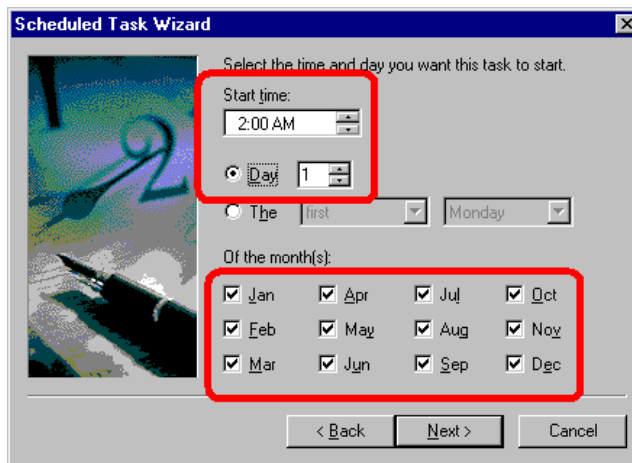
<8-3. Top 100 Monthly Report >



<8-4. Mutiple Scheduled Reports (Windows NT4.0) >



<8-5. Setting Top 100 Monthly Report (T100MR.bat) (Windows NT4.0) >



<8-6. Setting Monthly Report (Windows NT4.0) >

The table below is a list of criteria files created by EyeNalysis and a description of the report that it generates.

File Name	Description
T5DR.bat	A Daily report of Top 5 IP addresses with all Internet sites and activities
T5WR.bat	A Weekly report of Top 5 IP addresses with all Internet sites and activities
T5MR.bat	A Monthly report of Top 5 IP addresses with all Internet sites and activities
T10DR.bat	A Daily report of Top 10 IP addresses with all Internet sites and activities
T10WR.bat	A Weekly report of Top 10 IP addresses with all Internet sites and activities
T10MR.bat	A Monthly report of Top 10 IP addresses with all Internet sites and

	activities
T25DR.bat	A Daily report of Top 25 IP addresses with all Internet sites and activities
T25WR.bat	A Weekly report of Top 25 IP addresses with all Internet sites and activities
T25MR.bat	A Monthly report of Top 25 IP addresses with all Internet sites and activities
T50DR.bat	A Daily report of Top 50 IP addresses with all Internet sites and activities
T50WR.bat	A Weekly report of Top 50 IP addresses with all Internet sites and activities
T50MR.bat	A Monthly report of Top 50 IP addresses with all Internet sites and activities
T100DR.bat	A Daily report of Top 100 IP addresses with all Internet sites and activities
T100WR.bat	A Weekly report of Top 100 IP addresses with all Internet sites and activities
T100MR.bat	A Monthly report of Top 100 IP addresses with all Internet sites and activities

# LICENSE AGREEMENT

## I. License and Use

Subject to the following terms and conditions, we grant you a royalty-free, nontransferable and nonexclusive right:

- (A) to use this version of EYENALYSIS on any single networked computer for which licensed seat users can access, provided that EYENALYSIS is (1) used on only one such computer at any one time, and (2) used only by the licensed seat users; and
- (B) to make and distribute to others unmodified copies of the demonstration version of EYENALYSIS, without any direct or indirect charge (except for the cost of the media in which the demonstration version is fixed), for non-commercial uses only.

## II. Limitation of Liability

ALL USE OF EYENALYSIS IS ENTIRELY AT YOUR OWN RISK. WE WILL NOT BE RESPONSIBLE TO YOU OR ANY THIRD PARTIES FOR ANY DIRECT, INDIRECT, CONSEQUENTIAL, SPECIAL OR PUNITIVE DAMAGES OR LOSSES YOU MAY INCUR IN CONNECTION WITH EYENALYSIS OR YOUR USE THEREOF, REGARDLESS OF THE TYPE OF CLAIM OR THE NATURE OF THE CAUSE OF ACTION.

## III. Indemnity

You will defend and indemnify us against (and hold us harmless from) any claims, proceedings, damages, injuries, liabilities, losses, costs and expenses (including attorneys' fees), relating to any acts by you in connection with EYENALYSIS, leading wholly or partly to claims against us by third parties, regardless of the type of claim or the nature of the cause of action.

## IV. Disclaimer of Warranty

EYENALYSIS IS PROVIDED "AS IS", WITH ALL FAULTS. WE MAKE NO WARRANTIES, EXPRESS OR IMPLIED, AS TO MERCHANTABILITY, FITNESS FOR A PARTICULAR USE OR PURPOSE, TITLE, NON-INFRINGEMENT, OR ANY OTHER CONDITION OF EYENALYSIS.

## V. Proprietary Rights

Except as specifically licensed above, you may not copy, modify, adapt, merge, include in other software, reproduce, translate, distribute, reverse engineer, decompile or disassemble any portion of EYENALYSIS.

## VI. Miscellaneous

This Agreement contains the entire understanding between you and us relating to your use of EYENALYSIS and supersedes any prior statements or representations. This Agreement can only be amended by a written agreement signed by you and us. This Agreement shall be interpreted and enforced under the laws of the province of Ontario, Canada.

**BY INSTALLING EYENALYSIS, YOU ARE EXPLICITLY AGREEING TO THE TERMS AND CONDITIONS SET WITHIN.**