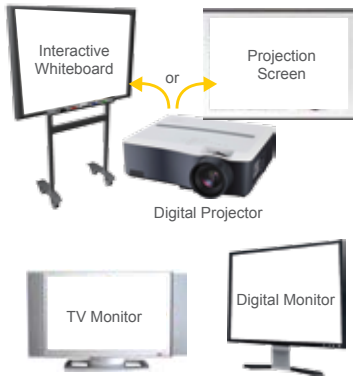


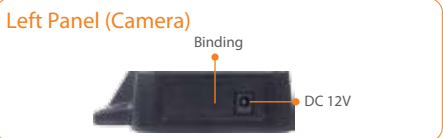
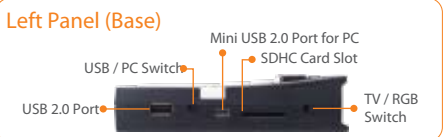
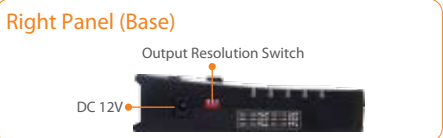
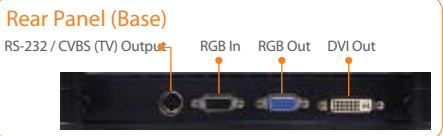
With a Visualiser, you can display...



Show enlarged images to your audience through...



W30 Product Specifications	
Image Sensor	1/2" CMOS Colour Image Sensor
Total Pixels	3M Pixels
Output Resolution	HD 1080p (1920x1080)
TV Line	700
Zoom	16X Total Zoom (2X AVerZoom™ + 8X Digital Zoom)
Frame Rate	30fps (Max.)
Focus	Auto / Manual
Shooting Area	A4 Landscape (330 x 248 mm Max.)
Internal Storage	Built-in Memory (Max: 80 images @ 3M; 240 images @ XGA)
External Storage	SDHC (32GB Max.) / USB Flash Drive (64GB Max.)
Image Effects	Colour / B&W / Negative / Mirror / Reverse / Freeze
Image Adjustments (White Balance / Exposure / Night View)	Auto / Manual
Dual Input	Yes (supports simultaneous live imaging from W30 & RGB In)
Split Screen	Yes
Picture-in-Picture	Yes
Display Mode	Sharp / Graphic / Motion / Microscope
Capture Mode	Single / Continuous
User Profiles	Up to 3
Timer	Yes
Flicker Filter Control	Yes (50/60Hz)
Remote Control	Yes
DVI-I Output	Yes
VGA I/O	1 In; 1 Out (15-Pins D-Sub, Pass Through)
Composite Video Output	Yes (NTSC or PAL)
RS-232 Port	Yes (with Composite / RS-232 Adapter cable)
Mini USB 2.0 Port	Yes (PC Camera / Built-in Image Download)
Camera Dimensions (W x H x D)	Operating: 114 x 336 x 520 mm Folded: 114 x 71 x 275 mm
Base Dimensions (W x H x D)	Operating: 155 x 105 x 215 mm Folded: 155 x 36 x 215 mm
Net Weight	Base: 0.55kg ; Camera: 1.6kg
Camera Power Source	AC 100V~240V, 50/60Hz
Camera Power Supply	12V DC Power Adapter (3A)
Camera Battery Type	Rechargeable Lithium-ion
Camera Battery Power	6600 mAh
Base Power Source	AC 100V~240V, 50/60Hz
Base Power Supply	12V DC Power Adapter (3A)
Effective Range (Base to Camera)	15m (guaranteed)
	Up to 30m (under ideal conditions)
Communication Protocol	802.11n
Compatible Operating System (A+ Interactive Software 2)	
Windows®	XP (SP2), Vista (32-bit or 64-bit), 7 (32-bit or 64-bit)
Package Content	
AVerVision W30 Base	Power Adapter (12V, 3A) x 2
AVerVision W30 Camera	Power Cord
Remote Control with Batteries	A+ Interactive Software CD
Composite / RS-232 Y Cable	User Manual CD
RCA Cable	Quick Guide
VGA Cable	Warranty Card
Mini USB Cable	



AVer

AVerVision W30

Connect and learn wirelessly



AVer Information Europe B.V,
Suite 3, Douglas House,
32-34 Simpson Road,
Milton Keynes, MK1 1BA.
01908 371772
www.aver.com/uk



© 2012 AVer Information Inc. All rights reserved.
All rights of this object belong to AVer Information Inc. Reproduced or transmitted in any form, or by any means without the prior written permission of AVer Information Inc. is prohibited. AVer Information Inc. reserves the rights to modify its products, including their specifications and any other information stated herein without notice. The official printout of any information shall prevail should there be any discrepancy between the information contained herein and the information contained in that printout.
"AVer" is a trademark owned by AVer Information Inc. Other trademarks used herein for description purpose only belong to each of their companies. (201201)

AVer
www.aver.com

TAIWAN
EXCELLENCE 2012



AVerVision W30

Redefines wireless Visualisers

Combining the best of technology and innovation, the AVerVision W30 wireless Visualiser offers students a complete learning experience like nothing before. Because the W30 is truly wireless, the W30 does not have to sit quietly at the teacher's desk, rather it can move across the classroom without the hindrance of unwieldy cables. The W30 has the flexibility to simultaneously display images from both its high-resolution camera and a computer; or, it can be combined with a 2nd Visualiser to present live images from two locations to compare and contrast materials. Classroom learning will truly never be the same!



Maximum Mobility

Share anything from collaborative learning to science experiments instantly, wirelessly!



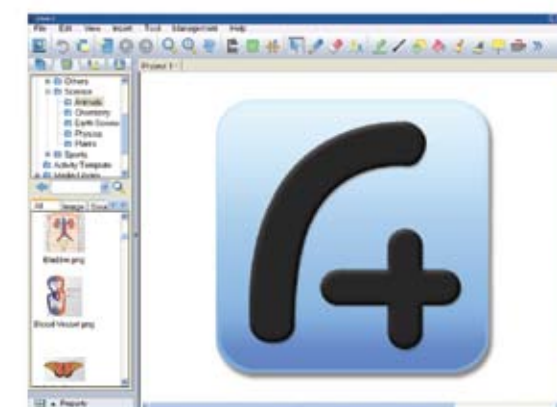
Group Learning

Take advantage of W30's portability and versatility to make classroom learning truly inclusive.



Smooth Streaming

The 30fps frame rate and full HD1080p output resolution create an excellent live viewing experience



A+ Interactive Software 2

- Record great video with live audio and capture high-quality images of what's being presented using the Visualiser
- Remix and create content from a Visualiser, a computer, the Internet and user-created material to provide a rich learning experience
- Annotate, draw, mark or type text over live images from a Visualiser using a variety of helpful teaching tools
- Never be at a loss for teaching materials with the extensive Resource Library



Full Flexibility

Simultaneously view live images from W30 and a 2nd visualizer or PC for unparalleled freedom in class



Vast Storage Space

Compatibility with USB flash drives and SDHC cards presents near limitless storage options



Compact Design

Small-sized with an ingenious folding arm, the W30 is easy to store, use and move around the classroom