

Chapter 2 - Macintosh Setup

Introduction

This chapter describes your printer's Macintosh setup, including connecting to the Ethernet port, as well as installing utilities, drivers, your printer's PPD (PostScript Printer Description), and related files. It also describes using your browser to access printer features and using Adobe Downloader.



Before beginning setup, you should be familiar with standard Macintosh procedures.

Port Connection: Ethernet Port

To connect to the Ethernet port

1. Turn off your computer.

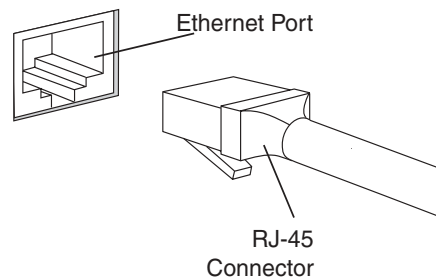


Fig. 2.1 Connect to Ethernet Port

2. Connect one end of the CAT 5 Ethernet cable to your printer's Ethernet port (fig. 2.1).
3. Connect the cable's other end to the appropriate port on your network or directly to a computer if you are using a crossover patch cable.

Before using your printer, set it up for your network environment and configure the Ethernet interface. See the next section for details.

Configuring EtherTalk

Ethernet is a multiple protocol medium that allows you to run several network protocols concurrently. An EtherTalk network allows you to run the AppleTalk protocol on a physical base which can be three to five times faster than a LocalTalk network.



Typically, only Macintosh computers are installed on an EtherTalk network. If you have PCs operating in an EtherTalk network, see the documentation that came with your PC EtherTalk interface.

The following steps are required to set up your XANTÉ printer on an EtherTalk network. “Port Connection: Ethernet Port” earlier in this chapter covers step 1; the next two sections cover steps 2 and 3.

1. Connect your XANTÉ printer to the network through the Ethernet port.
2. Configure your Macintosh for EtherTalk. See the next section, “Configure the Macintosh for EtherTalk,” for details.
3. Change the EtherTalk Zone name, if necessary using the Setzone.ps file and Adobe Downloader or via your browser. See “Change the EtherTalk Zone Name” later in this chapter for details.

Configure the Macintosh for EtherTalk

Configure your connection through the AppleTalk Control Panel under Apple menu: Control Panels: AppleTalk on a Macintosh with OS 8.X or higher.

- Go to the Apple menu, select Control Panels, and then select AppleTalk. Select Ethernet from the drop-down menu.

Change the EtherTalk Zone Name

On an EtherTalk network with more than one zone, the network router assigns your printer a default zone. Check with your System Administrator to determine the correct zone for your printer. Then, if necessary, change the printer’s zone name using the Setzone.ps file and Adobe Downloader or the Set EtherTalk Zone option available through your browser. See “EtherTalk Configuration” later in this chapter.

Before Beginning Software Installation and Configuration

Before you begin software installation and configuration, be aware that installation depends on your Macintosh OS version.

- Any classic Macintosh OS version (not version X): When the XANTÉ Utilities CD-ROM is inserted into the computer, the setup program starts (or should start) automatically.
- OS X: The setup program will not start. Click the CD-ROM icon to open it; then double-click OSX_setup. This provides a front-end for the installers available to OS X.

Language

Before beginning the software installation and configuration, note that whenever you open the XANTÉ Utilities, you need to make sure the appropriate language is selected. You can select the language either in the Main Installation Window (fig. 2.2) or from the Language menu (fig. 2.3). Use the following procedure to select the language.

1. Insert the XANTÉ Utilities CD-ROM into your Macintosh. The Main Installation window should open automatically (fig. 2.2). If not, double-click the CD-ROM icon; then, double-click the Setup icon.



Fig. 2.2 Main Installation Window



Fig. 2.3 Language Menu

2. Select the desired language from the drop-down menu in the Main Installation window (fig. 2.2) or from the Language menu (fig. 2.3).

English is the factory default language. Other options include Chinese (Simplified), Chinese (Traditional), Danish, Dutch, Finnish, French, German, Italian, Japanese, Korean, Norwegian, Portuguese (Brazilian), Spanish, and Swedish.

Macintosh OS X Printer Installation

This section describes how to install your printer on your Macintosh OS X system.



You must have Mac OS X version 10.1.5 or 10.2.1 to install your printer properly.

1. Verify that AppleTalk is enabled.
 - a. Select Apple menu: System Preferences: Network. The Network window appears (fig. 2.4).
 - b. Select Built-in Ethernet from the drop-down Show menu (fig. 2.4). Next, select the AppleTalk tab, select Make AppleTalk Active, and click Apply Now. Then, close the window.



Fig. 2.4 Network Window

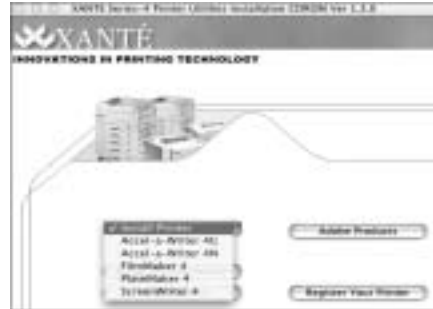


Fig. 2.5 Utilities Installation Window

2. Insert the XANTÉ Utilities CD-ROM into your Macintosh. Double-click the OSX_setup icon. The Utilities Installation window appears (fig. 2.5).
3. Select your printer from the Install Printer drop-down menu (fig. 2.5). Print Center opens automatically. If you have OS X version 10.1.5, go to step 4; for OS X version 10.2.1, skip to step 5.
4. Do the following if you are using OS X version 10.1.5.
 - a. Click Add in the window asking if you would like to add to your list of printers now (fig. 2.6), or if you already have printers installed, click Add Printer. The Printer List window appears (fig. 2.7).



Fig. 2.6 Add Printer Window



Fig. 2.7 Printer List Window

- b. Select AppleTalk from the top drop-down menu (fig. 2.7); select AppleTalk Network in the second drop-down menu; highlight your printer in the Name list; select your printer PPD from the Printer Model drop-down menu; then, click Add.

- c. Locate your printer's PPD (Hard Drive: Library: Printers: PPDs: Contents: Resources: EN.LPROJ Folder) and select it. The Printer List window reappears (fig. 2.8) with your printer listed.



Fig. 2.8 Printer List Window



The black dot indicates the default printer. If you need to change it, highlight your printer; then, go to the Printers menu and select Set as Default. The black dot now appears in front of the selected printer.

- d. Skip to step 6.
- 5. Do the following if you are using OS X version 10.2.1.
 - a. Click Add when Print Center opens (fig. 2.9).



Fig. 2.9 Add Printer Window



Fig. 2.10 Printer List Window

- b. Select AppleTalk in the top drop-down menu; select AppleTalk Network in the second drop-down menu (fig. 2. 10); highlight your printer in the list under Name; select XANTÉ from the Printer Model drop-down menu; select your printer's PPD from the Model Name drop-down menu; and then, click Add.

- c. Locate your printer's PPD (Hard Drive: Library: Printers: PPDS: Contents: Resources: EN.LPROJ folder) and select it. The Printer List window reappears with your printer listed.



The printer whose name appears in bold type is the default printer. If you need to change the default printer, highlight the desired printer, go to the Printers menu, and then select Set as Default; that printer's name now will appear in bold type.

- d. Configure the printer's options.
 - 1) Highlight the printer under Name in the Printer List. Then select Printer Menu: Show Options. The Printer Info window appears (fig. 2.12).

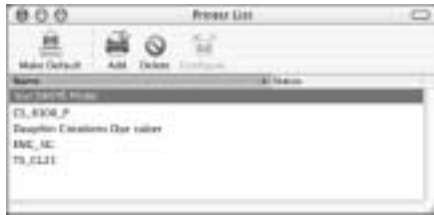


Fig. 2.11 Printer List

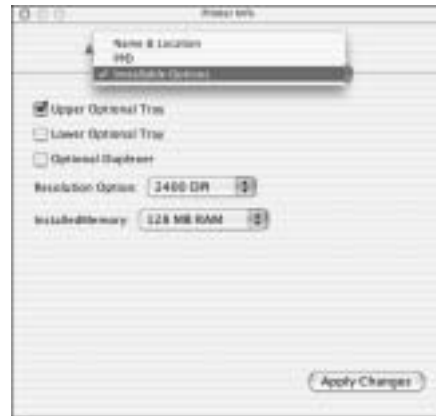


Fig. 2.12 Printer Info Window

- 2) Select Installable Options from the top drop-down menu (fig. 2.12). Then, uncheck any options not installed on your printer and select the appropriate resolution and memory.



Installable options configuration is available only on OS X 10.2 and above.

- 3) Click Apply Changes (fig. 2.12). Then, close the window.
6. Locate the Text Edit (Hard Drive: Applications: TextEdit) program (fig. 2.13) and open it. Then, type a few words into the file to check the settings and features for your printer.



Fig. 2.13 Locate Text Edit



You can try any application at this time, but this procedure checks the PPD for the correct features in the OS X system without having to use another third-party product.

7. Go to File: Page Setup. When the Setup window appears (fig. 2.14), make sure your printer appears in the Format for drop-down menu. Then, check the Paper size drop-down menu to make sure the standard paper sizes for your printer appear (fig. 2.15). Click OK.



Custom sizes are not available in OS X yet.



Fig. 2.14 Setup Window

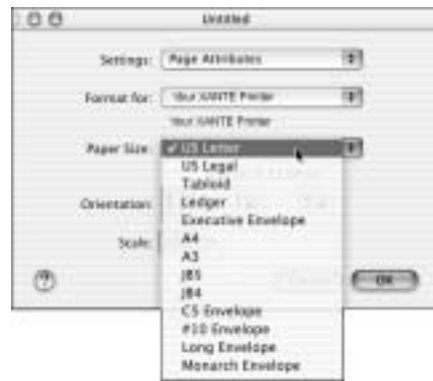


Fig. 2.15 Check Paper Size Window

8. Go to File: Print. When the Print window appears (fig. 2.16), select Printer Features from the drop-down menu. When the Printer Features window appear (fig. 2.17), set the Media Type, Resolution, Screen Shape, Screen (LPI), and Gamma settings.

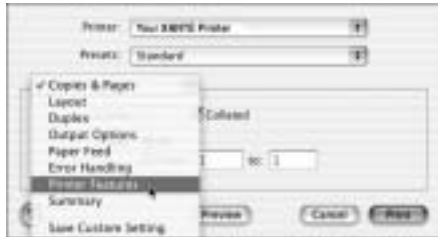


Fig. 2.16 Print Window



Fig. 2.17 Printer Features Window

9. Set other printer features (Copies & Pages, Layout, Output Options, etc.), by selecting them from the Print Window (fig. 2.16) drop-down menu. For example, to select the specific media source tray(s), use the following procedure.



All features are listed as available in OS X. However, they are only available if the feature is installed on your printer.

- a. Select Paper Feed from the drop-down menu (fig. 2.16). The Paper Feed window appears (fig. 2.18).



Fig. 2.18 Paper Feed Window

- b. Select All pages from or First page from and select the desired tray from the corresponding drop-down menu (fig. 2.18). Then, click Print.



To print from either a manual feed tray or a multipurpose tray, select Manual Feed.

10. Select Save Custom Setting from the drop-down menu (fig. 2.16); then, click Print.

Configuring Your Printer from an OS X System

You can configure your printer by selecting Page Setup and Printer Features.

1. Double-click on your hard drive icon.
2. Locate and double-click the Installer Log File (fig. 2.19).



Fig. 2.19 Locate Installer Log File



Fig. 2.20 File Menu Window

3. Select File: Page Setup (fig. 2.20). The Page Setup Window appears (fig. 2.21).



Fig. 2.21 Page Setup Window

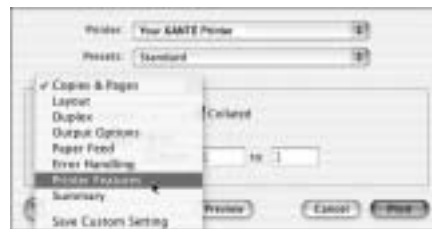


Fig. 2.22 Print Window

4. Select your printer from the “Format For” menu (fig. 2.21); your printer’s PPD should be listed.



If it says Generic, call XANTÉ Technical Support at 800-926-8393 (US and Canada).

5. Select File: Print. The Print window appears (fig. 2.22).
6. Select Print Features from the Print window's drop-down menu (fig. 2.22). Your printer's PPD options are under the Printer Features (fig. 2.23).



Some features may appear in the Print window that do not apply to your printer. For example, you may see 2400 x 2400 DPI resolution even when your printer does not have this option installed. In such cases, disregard these listings.

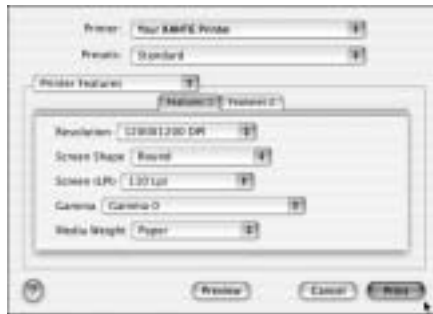


Fig. 2.23 Feature Options Tabs

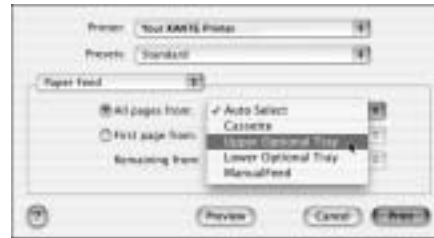


Fig. 2.24 Paper Feed Options

7. Select the appropriate options from the drop-down menus on the Feature Tabs (fig. 2.23). See “Configuring Printer Options” later in this chapter for a description of your printer's options.
8. Select Paper Feed from the Print window drop-down menu (2.22). When the paper feed options appear (fig. 2.24), select the desired media source.



To save these settings made in this procedure as the defaults for all print jobs, select Save Custom Setting from the Print window drop-down menu.

9. Click Print. The OS X Installer Log prints, verifying that your printer is installed correctly.

Adobe PostScript Printer Driver and Printer PPD Installation (OS 9)

The XANTÉ Utilities CD-ROM contains the latest AdobePS Printer driver and your printer's PPD. These files must be installed before you use your printer. They are loaded onto your system during the Install Printer process. This section covers that process as well as manual installation in case you should need to reinstall them.

Install Printer

Use Install Printer to install XANTÉ Utilities, your printer's PPD, and your printer's QuarkXPress PDF (if QuarkXPress is on your system).

1. Insert the XANTÉ Utilities CD-ROM into your Macintosh. The Main Installation window should open automatically (fig. 2.25). If not, double-click the CD-ROM icon; then, double-click the Setup icon.



Fig. 2.25 Main Installation Window



Fig. 2.26 XANTÉ Utilities Window

2. Select the desired language from the drop-down menu (fig. 2.25); then, select your printer from the Install Printer drop-down menu (fig. 2.26). The Driver Installer window for the selected printer appears (fig. 2.27).



Fig. 2.27 Driver Installer Window



Fig. 2.28 Read Me Window

3. Click Continue (fig. 2.27). The Read Me window appears (fig. 2.28).
4. Read the Read Me window (fig. 2.28); then, click Continue. The printer's Install window appears (fig. 2.29).



Fig. 2.29 Custom Install Window



Fig. 2.30 Easy Install Window

5. Select the type of installation from the top, left, drop-down menu (fig. 2.29).
 - a. Select Custom Install if you are installing one or more, *but not all*, of the listed printers. Then, select the appropriate printer(s) and software.
 - b. Select Easy Install if you are installing *all* listed printers and have all listed software on your system.
6. Change the installation destination for the files in the Install Location box if necessary.



You can quit installation by clicking Quit (fig. 2.29). Also, if you previously ran the XANTÉ Utilities Install program and want to remove the files, use the Uninstall option to remove them.

7. Click Install (fig. 2.29). Then, if you selected any of the listed software (PageMaker, QuarkXPress, or ScenicSoft Preps) in step 5, continue to step 8. Otherwise, skip to step 9.
8. Read the Application Location window instructions (fig. 2.31) and click OK. Then, follow those instructions to locate and select the appropriate application folder(s).

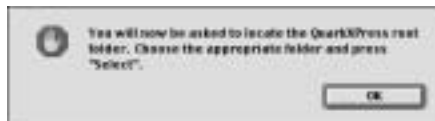


Fig. 2.31 Application Location Window

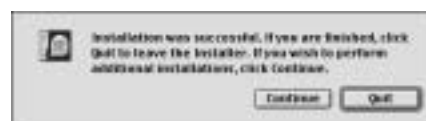


Fig. 2.32 Installation Was Successful Window

9. Wait until the Installation Was Successful window appears (fig. 2.32); then, click Quit.

Install the PostScript Driver (AdobePS) (OS 9)

You can install the Adobe PostScript Driver (AdobePS) in two ways from the XANTÉ Utilities, via the Install Printer menu or via the Drivers drop-down menu link.

1. Insert the XANTÉ Utilities CD-ROM into your Macintosh. The Main Installation window should open automatically (fig. 2.33). If not, double-click the CD-ROM icon; then, double-click the Setup icon. Then, select the desired language from the drop-down menu (fig. 2.33).



Fig. 2.33 Main Installation Window

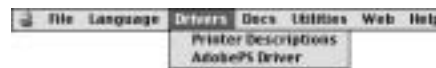


Fig. 2.34 Drivers Menu

2. Select AdobePS Driver from the Install Printer drop-down menu (fig. 2.33) or select AdobePS Driver from the Drivers menu (fig. 2.34). The AdobePS Introduction window appears (fig. 2.35).



On most systems, the AdobePS program launches when you click PostScript Driver unless this version of the driver is installed already. If not, open it manually by double-clicking AdobePS in the Drivers: AdobePS X.X: Eng (or appropriate language) folder. (The X.X will be replaced by the driver version; it is recommended that you install the latest version.)

- Click Continue in the AdobePS Introduction window (fig. 2.35). The License window appears (fig. 2.36).



Fig. 2.35 AdobePS Introduction Window



Fig. 2.36 License Window

- Read the license agreement (fig. 2.36); then, click Accept. The AdobePS Install window appears (fig. 2.37).



Fig. 2.37 AdobePS Install Window



Fig. 2.38 Installation Was Successful Window

- Change the driver's destination disk (if necessary) in the Install Location box (fig. 2.37); then, click Install. An Installation Was Successful window appears (fig. 2.38).
- Click Quit (fig. 2.38). The Main Installation window reappears (fig. 2.39).



Fig. 2.39 Main Installation Window



Fig. 2.40 Registration Form

7. Click Register On-line (fig. 2.39) if you are on-line; the Registration web page launches (fig. 2.40) and you continue to step 8. If you are not on-line, skip to step 9.
8. Complete and submit the registration form (fig. 2.40). Then, close your web browser. The Main Installation window reappears (fig. 2.39).
9. Take the appropriate following action.
 - a. To continue installing other parts of the Utilities, continue to the appropriate installation section: “Install Adobe Acrobat Reader,” “Install ATM (Adobe Type Manager),” or “Install PS3 Fonts.”



If Adobe Acrobat Reader is not on your system, it is recommended that you install it now using the procedure in “Install Adobe Acrobat Reader” later in this chapter.

- b. To view or print your printer’s manual, to register your printer on-line if you have not done so already, to access XANTÉ’s on-line support, or to check Adobe’s web site for product updates, continue to the appropriate section: “View Manuals,” “Register On-line,” “Access XANTÉ On-line Support,” or “Adobe Web Site Access.”
- c. To quit the installation process, close the Main Installation window (fig. 2.33); then, restart your computer.

AdobePS Driver Manual Installation

To load the AdobePS Printer driver manually

1. Insert the XANTÉ Utilities CD-ROM into your Macintosh. When the Main Installation window appears, close it and the setup program.
2. Double-click the Utilities CD-ROM icon.
3. Go to the Drivers: AdobePS: ENG (or appropriate language) folder.
4. Double-click the AdobePS Installer icon and follow the on-screen instructions.

The AdobePS driver requires the following system setup:

- Apple Power Macintosh running System 8.6 or later (AdobePS does not run on Macintosh 68K computers)
- At least 4 MB of memory

- At least 3.1 MB of hard disk space plus the space required for the PPDs (each PPD is approximately 75 K)
- Apple ColorSync 2.0.1, if using the AdobePS ColorSync features (AdobePS does not support ColorSync 1.X)



AdobePS is not compatible with Apple QuickDraw GX.

AdobePS provides

- Adobe PostScript 3 and Adobe PostScript Level 2 support
- Full ColorSync 2.1 support
- Simplified printer setup and printing interface
- Ability to change printers from the Print dialog box
- Collation to print multiple document copies as opposed to multiple groups of the same page
- Reverse order printing to control the order in which the document pages are printed
- Poster printing of enlarged pages on multiple sheets that can be combined to create a poster
- Manual duplexing to split a print job into two segments: one for printing one side of the document; the second to print the other side
- Booklet printing to create brochure-like printouts
- OpenType fonts support using Adobe Type Manager 4.6
- Transverse option support for printers supporting custom page sizes
- Support for PostScript printers with a Universal Serial bus

XANTÉ PlateMaker 4 PPD Manual Installation

Depending on your operating system, your printer's PPD is either in the OS8_9: Printer Descriptions folder or the OSX: Xanté Utilities folder. This file provides software applications access to printer specific features.

To load the printer PPD manually

1. Insert the XANTÉ Utilities CD-ROM into your Macintosh. When the Main Installation window appears, close it and the setup program.
2. Double-click the Utilities CD-ROM icon.

3. Go to the OS8_9: Printer Descriptions folder.
4. Drag the XANTÉ PlateMaker 4 file for your printer into the System Folder: Extensions: Printer Descriptions folder on your Macintosh.

Configuring the PPD

1. Select Chooser from the Apple menu. The Chooser window appears (fig. 2.41).



Fig. 2.41 Chooser Window



Fig. 2.42 Select AdobePS

2. Select AdobePS from the box on the left (top left in a network environment); a list of available printers appears to the right.



If the printer does not appear in the list, verify that

- the printer is on and cable connections are secure.
- your system is configured for EtherTalk (see “Configuring EtherTalk” earlier in this chapter).
- your Macintosh is setup for EtherTalk in the AppleTalk Control panel.

3. Highlight your printer and click Create. If the setup reminder dialog box appears, click OK. The Adobe PostScript printer driver automatically selects and configures the correct PPD for your printer.



If multiple PPDs are installed for your printer, select the correct PPD when prompted.

4. Close the Chooser window to complete the PPD setup unless the Autoseup Failed message window appears (fig. 2.43). If this window appears, continue with step 5.



Fig. 2.43 Autosetup Failed Message



Fig. 2.44 Installable Options Window

5. Click OK (fig. 2.43). The Installable Options window appears (fig. 2.44).
6. Configure your printer's options (fig. 2.44).
 - a. Select Installed for any optional tray you have installed on your printer.
 - b. Select the highest resolution on your printer and the amount of RAM installed on your printer.
7. Click OK twice. The Chooser window reappears; then, close that window.

See "The PPD" in chapter 4 for details on selecting PPD options.

Configuring Printer Options

Various printer specific options become available through your software applications after you install the printer's PPD. This section covers these options and their suggested settings.



Available options vary depending on the application. For example, Adobe PageMaker contains several options not available through other programs.

Printer Specific Options

The following printer specific options are available in most applications.

Fast Imaging

Adobe PostScript 3's Fast Imaging feature allows you to select from two methods of image data compression for faster printing when image quality is not the primary concern.

Set Fast Imaging from your application Print dialog box.

- None, the factory default, prints at normal speed and with no data compression.
- Optimized for Quality compresses image data for faster printing than normal but with some (usually not noticeable) loss of image quality.

- Optimized for Speed implements a greater degree of data compression to provide the fastest print time but with the possibility of a noticeable loss of data quality.



Optimize selections do not function if the print job contains an image that is masked or rotated to anything other than 0°, 90°, 180°, or 270°.

Gamma

The Gamma feature allows you to adjust printer output for ink, media, file, and environmental conditions. For example if a scanned image is too dark, you can select a new gamma setting to lighten and enhance the details. XANTÉ provides seven standard gamma curves available through the Gamma menu in the Print dialog box.

Gamma curves 1 through 5 progressively lighten the midrange values in an image. Gamma 0 (the factory default) makes no change to the image, and Gamma 6 produces a reverse (negative) image without changing the image in the application. Graphs in figure 2.45 show the change to the midrange gray levels.

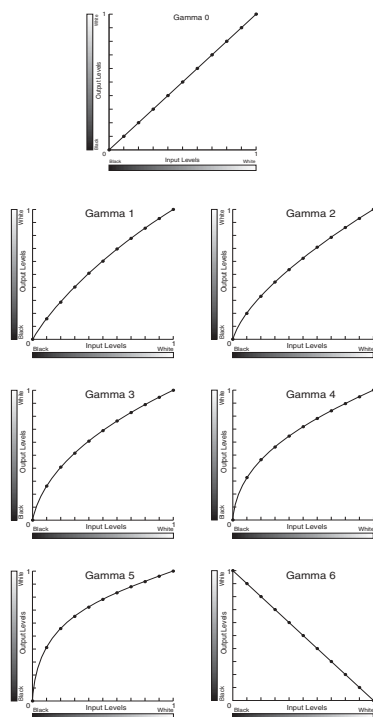


Fig. 2.45 Gamma Corrections 0 through 6

You also can use the front panel options to control gamma. For details, see “Halftone Calibration Technology (Gamma)” in chapter 4.



Depending on the application used, a Printer’s Default option may be available. When this option is selected, the current printer setting is used for the job.

Media Weight

Media Weight allows you to designate the type of media used and to access correct temperatures for that media. Set Media Weight from your application Print dialog box. Options are Paper, Heavy Paper, Cover, Transparency, Paper Plate, Polyester Plate, Clear Film, Matte Film, and Labels media weights.



You can create custom gamma curves to calibrate or adjust your printer for specific media weights. For details, see “Halftone Calibration Technology (Gamma)” in chapter 4 and see the linearization section of “PostScript Features (AccelaFont, DPI, Linearization, LPI, Margins, More X-ACT, and VM)” later in this chapter.

Mirror Print

Mirror Print allows you to produce a mirror image which is reversed left to right (fig. 2.46). This type of image is used to produce right reading documents required for imaging silk screens or metal plates.

Set Mirror Print from your application Print dialog box. To ensure the highest quality when producing mirror images, use this menu in the Print dialog box rather than an application setting. True enables this feature and False (the factory default) disables it.



Fig. 2.46 Mirror Image

Optimize Output For

The Optimize Output For feature allows you to choose between Quality and Speed. When quality output is more important than printing speed, select Quality. When speed is the more important, select Speed but be aware that output quality may be slightly lower.



Depending on the application used, a Printer's Default option may be available. When this option is selected, the current printer setting is used for the job.

Screen (LPI)

The Screen LPI (lines per inch) feature allows you to control the number of gray levels and enhance the resolution quality of your printed image.

Usually you set lines per inch through your application. However, when LPI is not a software option, you can use the Screen option provided by your printer's PPD in the Print dialog box. Options include 30 LPI, 75 LPI, 85 LPI, 95 LPI, 110 LPI, and 115 LPI.



Depending on the application used, a Printer's Default option may be available. When this option is selected, the current printer setting is used for the job.

Screen Shape (Dot Shapes)

The Screen Shape feature allows you to select the shape of dots that make up the screen pattern for your printed image. This feature is controlled by your printer's PPD that is loaded on your system during printer setup.

Set the Screen Shape menu option in your application Print dialog box. Options are Enhanced, None (the factory default), Euclidean, Round, Line, and Ellipse. The choice of shape depends on the type of print job. For example, round usually is used for traditional offset printing, while screen printers may choose line or ellipse.



Depending on the application used, a Printer's Default option may be available.

Smooth Shading

Smooth Shading allows you to use the Adobe PostScript 3 method of rendering gradient blends. Smooth Shading produces the highest quality image at the selected resolution. For some images, PostScript files created with Smooth Shading are smaller and print faster than those created using PostScript Level 2.

Set Smooth Shading from your application Print dialog box. Off, the factory default, disables this feature. Options of Maximum, High, Medium, Low are available.

Additional Printer Specific Options for Adobe PageMaker

Several additional printer specific options are available through PageMaker's Printer Features in the Print dialog box. They include Tray Switch, Installed Memory, and Optional Tray.

Tray Switch (Tray Chaining)



Tray chaining only applies to the standard and installed optional cassettes. It does not apply to the multipurpose tray.

Tray Switch allows you to select the printer's tray chaining feature on a per job basis. Tray chaining on your printer is controlled via the printer's PPD Tray Switch feature. Options are False which disables chaining and True which enables it. When True is selected, your printer automatically switches to another media source when the current source runs out of media as long as the following conditions are met.

- All selected media sources must contain the same size media. If the printer detects a different size media when it switches to a new tray, the printer stops printing.
- All trays must be inserted properly. When Tray Switch is set to True, an incorrectly positioned tray prevents the printer from printing.

Installed Memory

The Installed Memory feature must be set to agree with your printer and Chooser memory configurations. If your printer has an installed memory upgrade, it will not appear in your application's Resolution menu unless Installed Memory is configured properly.

Optional Tray

The Optional Tray setting must be set to agree with your printer and Chooser configurations. Otherwise, the tray will not appear or be selectable from within your application. Options include Not Installed (the factory default) and Installed.

Installing Auxiliary Utilities

XANTÉ Utilities included access to several other programs and files which you may find very helpful when working with your printer. These include Adobe Acrobat Reader, Adobe Type Manager (ATM), and Adobe PS3Fonts (screen fonts for the resident printer fonts).

Install Adobe Acrobat Reader

XANTÉ Utilities CD-ROM documentation is in Adobe Acrobat Portable Documentation Format (PDF). If you do not have Adobe Acrobat Reader on your system, you should install it now.

You can install Adobe Acrobat Reader from the XANTÉ Utilities via the Utilities menu or via the Software Utilities Adobe Acrobat Reader link.

1. Insert the XANTÉ Utilities CD-ROM into your Macintosh. The Main Installation window should open automatically (fig. 2.47). If not, double-click the CD-ROM icon; then, double-click the Setup icon.



Fig. 2.47 Main Installation Window

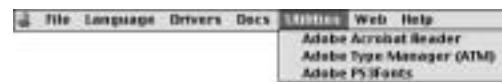


Fig. 2.48 Utilities Menu

2. Select Adobe Acrobat Reader (fig. 2.47) from the Software Utilities drop-down menu, or select Adobe Acrobat Reader from the Utilities menu (fig. 2.48). The Acrobat Reader window appears (fig. 2.49).



Fig. 2.49 Acrobat Reader Window



Fig. 2.50 Acrobat Reader Installer Window

3. Click Continue (fig. 2.49). The Acrobat Reader Installer window appears (fig. 2.50).
4. Select the desired type of installation from the top left, drop-down menu (fig. 2.50). Easy Install installs all necessary files automatically. Custom Install allows you to select which files to install, including Asian language files.
5. Click Install (fig. 2.50). The Installing Progress window appears (fig. 2.52).



If you are on-line, a caution window appears which allows you to quit Netscape Navigator and Internet Explorer if they are running (fig. 2.51). In this case, click Quit Applications.



Fig. 2.51 Caution Window



Fig. 2.52 Installing Progress Window

6. Wait until Acrobat Reader finishes installing. An Installation Was Successful window appears (fig. 2.53).



Fig. 2.53 Installation Was Successful Window

7. Click Quit (fig. 2.53). When the Main Installation window reappears, close it (Fig. 2.47).
8. Go to the Application (Mac OS 9): Acrobat Reader 5.0 folder. Then, open and read the ReadMe.html file.
9. Close the ReadMe.html file; next, close the Acrobat Reader 5.0 and Application (Mac OS 9) folders and then remove the utilities CD-ROM from your Macintosh.

Install ATM (Adobe Type Manager)

You can install the Adobe Type Manager application from the XANTÉ Utilities via the Utilities menu or via the Install ATM link.

1. Insert the XANTÉ Utilities CD-ROM into your Macintosh. The Main Installation window should open automatically (fig. 2.54). If not, double-click the CD-ROM icon; then, double-click the Setup icon.



Fig. 2.54 Main Installation Window

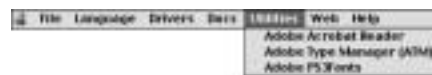


Fig. 2.55 Utilities Menu

2. Select Adobe Type Manager (ATM) from the Software Utilities drop-down menu (fig. 2.54) or select Adobe Type Manager (ATM) from the Utilities menu (fig. 2.55). A window appears asking you to indicate the appropriate country to view the ATM license for that area (fig. 2.56).

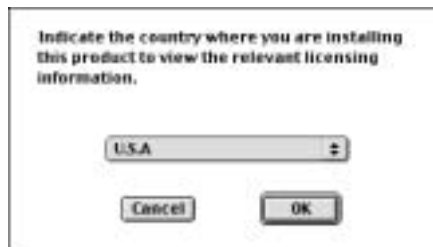


Fig. 2.56 Select Appropriate Country

3. Select the country (fig. 2.56); then click OK. The Adobe License Agreement window appears (fig. 2.57).



Fig. 2.57 License Agreement Window



Fig. 2.58 Adobe Type Manager Window

4. Read the license agreement (fig. 2.57); then, click Accept. The Adobe Type Manager window appears (fig. 2.58).
5. Click Continue (fig. 2.58). The Read Me window appears (fig. 2.59).



Fig. 2.59 Read Me Window



Fig. 2.60 ATMinstall Window

6. Read the Adobe Read Me window; then, click Continue. The ATMinstall window appears (fig. 2.60).
7. Select the desired type of ATM installation from the drop-down menu at the top left (fig. 2.60). Easy Install installs the Adobe Type Manager and all related files. Custom allows you to select just installing ATM or also installing ATM Language Support.



To remove ATM and all related files, select Remove (fig. 2.60); the Install button converts to Remove. Then, click Remove.

8. Click Install (fig. 2.60). A warning window may appear which allows you to quit other running applications. Then, a message window recommends you restart your computer after installing the software (fig. 2.61).

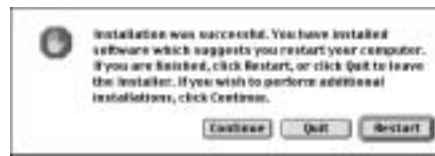


Fig. 2.61 Restart Recommendation Window Fig. 2.62 Installation Was Successful Window

9. Click Continue (fig. 2.61). When installation is complete, an Installation Was Successful window appears (fig. 2.62).
10. Click Restart if you are finished; click Quit to leave the Installer; or click Continue if you wish to perform additional installations (fig. 2.62).

Install PS3Fonts

You can install the screen fonts for the Adobe PostScript 3 fonts on your printer from the XANTÉ Utilities via the Utilities menu or via the Adobe PS3Fonts option under Software Utilities.

1. Insert the XANTÉ Utilities CD-ROM into your Macintosh. The Main Installation window should open automatically (fig. 2.63). If not, double-click the CD-ROM icon; then, double-click the Setup icon.



Fig. 2.63 Main Installation Window

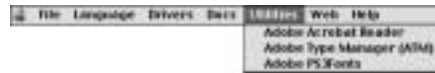


Fig. 2.64 Utilities Menu

2. Select AdobePS3Fonts from the Software Utilities menu (fig. 2.63), or select Adobe PS3Fonts from the Utilities menu (fig. 2.64). The Adobe PostScript 3 Font Installer window appears (fig. 2.65).



Fig. 2.65 Font Installer Window

3. Click Continue (fig. 2.65). The Font Installer License window appears (fig. 2.66).



Fig. 2.66 Font Installer License Window



Fig. 2.67 PS3Fonts Installer Window

4. Read the license window (fig. 2.66); then, click Accept. The PS3Fonts Installer window appears (fig. 2.67).
5. Select Easy Install from the top, left, drop-down menu (fig. 2.67). Easy install installs Type 1 and TrueType fonts for Adobe PostScript 3.



If you do a Custom Install, you can select the desired fonts to install; options include PostScript Type 1, TrueType, CE Type 1, and CE True Type.

6. Click Install (fig. 2.67). A message window appears to let you close any other running applications (fig. 2.68).



Fig. 2.68 Quit Applications Window



Fig. 2.69 Replaced Fonts Window

7. Click Continue (fig. 2.68). A progress window lets you know the installation's progress.
8. Wait until installation is complete; when the Replaced Fonts window appears (fig. 2.69), click OK. An Installation Was Successful window appears (fig. 2.70).



Fig. 2.70 Installation Was Successful Window

9. Click Restart if you are finished; click Quit to leave the Installer; or click Continue if you wish to perform additional installations (fig. 2.70).

View Manuals

You can open and view the printer's documentation from the XANTÉ Utilities via the View Manuals drop-down menu or the Docs menu.



Acrobat Reader needs to be installed to view the manual.

1. Insert the XANTÉ Utilities CD-ROM into your Macintosh. The Main Installation window should open automatically (fig. 2.71). If not, double-click the CD-ROM icon; then, double-click the Setup icon.



Fig. 2.71 Main Installation Window

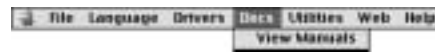


Fig. 2.72 Docs Menu

2. Select View Manuals in the Main Installation window (fig. 2.71) or select the desired manual from the Docs menu (fig. 2.72). The Manuals List Window appears (fig. 2.73).

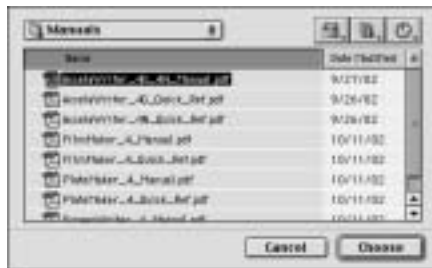


Fig. 2.73 Manuals List Window

3. Highlight the manual file for your printer (fig. 2.73); then click Choose. Acrobat Reader opens and in turn opens the selected manual file.



If you previously have not loaded Acrobat Reader on your system, a License window appears. In this case, read the license window and click Accept to finish opening that application.

4. View either the User's Manual (fig. 2.74) or the Quick Reference Manual (fig. 2.75).



Fig. 2.74 User's Manual

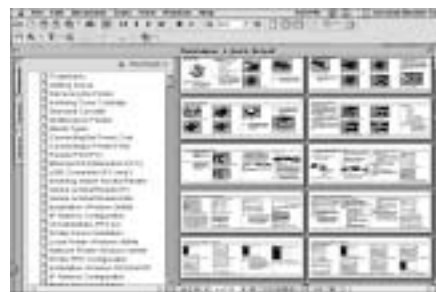


Fig. 2.75 Quick Reference Manual

5. Close the manual file when you are finished; then, close Acrobat Reader.

Register On-line

You can register the printer on-line from the XANTÉ Utilities via the Web menu or via the utilities Main Information window through either the Register On-line option or the Register Your Printer option under Web Information. These options open the XANTÉ web site product registration page. These features only work if you are connected to a network and on-line.

1. Insert the XANTÉ Utilities CD-ROM into your Macintosh. The main Installation window should open automatically (fig. 2.76). If not, double-click the CD-ROM icon; then, double-click the Setup icon.



Fig. 2.76 Main Installation Window



Fig. 2.77 Web Menu

2. Select one of the following three options—Register On-line (fig. 2.76), Register Your Printer from the Web Information drop-down menu (fig. 2.76), or Register Your Printer from the Web menu (fig. 2.77). Your web browser launches and takes you to the product registration page on XANTÉ’s web site (fig. 2.78).



Fig. 2.78 Registration Form

3. Complete and submit the registration form (fig. 2.78). Then, close your web browser. You return to the Main Installation window (fig. 2.76).
4. Close the Main Installation window (fig. 2.76).



You also can register on-line using your browser. See “XANTÉ Web Access (XANTÉ Web Site, Register Printer, and Help)” later in this chapter.

Access XANTÉ On-line Support

You can use the printer utilities to access XANTÉ’s on-line support web site which offers quick access to printer drivers, frequently asked questions, download files, etc. Access this site via the Web menu or via the Xante On-line Support option in the Web Information drop-down menu on the Main Installation window.

1. Insert the XANTÉ Utilities CD-ROM into your Macintosh. The main Installation window should open automatically (fig. 2.79). If not, double-click the CD-ROM icon; then, double-click the Setup icon.



Fig. 2.79 Main Installation Window



Fig. 2.80 Web Menu

2. Select Xante On-line Support from the Web Information drop-down menu (fig. 2.79), or select it from the Web menu (fig. 2.80). Your web browser launches and takes you to the XANTÉ Support web site.
3. Close your web browser when you are finished. You return to the Main Installation window (fig. 2.79).
4. Close the Main Installation window (fig. 2.79).

Miscellaneous Procedures

This section covers miscellaneous procedures to make working in the Macintosh environment easier.

CD-ROM PostScript Files and Programs: Feature Access

You can access and control many printer features via programs and PostScript files on the XANTÉ Utilities CD-ROM. For example, you can use PostScript files to set your printer's EtherTalk zone name, control start-up page printing, or initialize an internal hard disk.

In a Macintosh environment, you can use Adobe Downloader program to download PostScript files and fonts to your printer (see the next section "Using Adobe Downloader" and see "PS Files Folder" later in this chapter for details).

Using Adobe Downloader

You can download Adobe Downloader (fig. 2.81) from Adobe's web site (see "Adobe Web Site Access" later in this chapter. Use this program to download and manage font files in your printer hard disk and to send PostScript files to your printer.

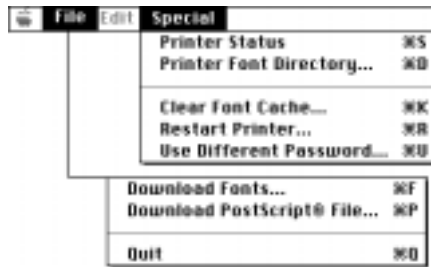


Fig. 2.81 Adobe Downloader Menu

For example, to change the printer's EtherTalk zone name using Adobe Downloader and the Setzone.ps file in the XANTÉ Utilities

1. Use a text editor such as SimpleText to open the Setzone.ps file in the PS Files folder on the XANTÉ Utilities CD-ROM.
2. Change the name of the "name of zone" in parentheses to the name of your EtherTalk zone.
3. Save the file and download it to your printer using Adobe Downloader's File: Download PostScript File option (fig. 2.81).



EtherTalk zone names are limited to 32 characters, are not case sensitive, and cannot include the = (equal), ≈ (approximately equal), * (asterisk), : (colon), or @ (at) characters. Also, you can use the browser to change the printer's EtherTalk zone name; see "Network (EtherTalk and TCP/IP Configuration)" later in this chapter for details.

Adobe Downloader File and Special Menus contain options that allow you to download files, check printer status, and manage fonts.

File Menu

The File menu allows you to download fonts and PostScript files to the printer and quit Adobe Downloader.

Download Fonts

This menu allows you to download fonts to printer memory. Fonts downloaded to your printer are considered resident, which means applications do not have to bundle these fonts with print jobs. Fonts downloaded to printer memory only remain during the current power cycle. (See "Managing Fonts" later in this chapter.)

Download Postscript File

This option allows you to select a PostScript file and send it to the printer.

Special Menu

The Special menu allows you to check printer status and manage fonts downloaded to your printer.

Printer Status

This option allows you to check current printer status.

Printer Font Directory

The Printer Font Directory provides access to fonts downloaded to the printer. Using this menu, you can print a list or view (on screen) all fonts downloaded to printer ROM, memory, or an optional hard disk. Delete allows you to remove fonts that have been downloaded to memory or the optional hard disk. You cannot remove fonts from ROM. See “Managing Fonts;” later in this chapter.

Other Special Menu Options

We recommend that you manually reboot your printer or use your system Special: Restart option instead of using the Clear Font Cache or Restart Printer options in the Special menu. See the PostScript Reference Language Manual about the Use Different Password option.

PS Files Folder

The PS Files folder on the XANTÉ Utilities CD-ROM contains Adobe PostScript files. These files can help you in such areas as keeping track of your printer’s status, performing specific functions, and printing font samples. Use Adobe Downloader to download these files to your printer; see “Using Adobe Downloader” earlier in this chapter for details.

Accelafont.ps allows you to set the percentage of ramdisk available for the Font Accelerator feature.

D.PS contains a Control-D (PostScript’s end-of-job marker) for use with applications that do not send a PostScript end-of-file.

Description.pdf contains an overview of the files in the PS Files folder. This file can be printed using Adobe Acrobat 3.0 or later.

DHCPOFF.ps allows you to disable the DHCP protocol.

DHCPON.ps allows you to enable the DHCP protocol.

Factory.ps resets the printer parameters to factory defaults.

Fonts.ps prints a list of the fonts resident on the printer.

Fontsamp.ps prints samples of Adobe PostScript 3 fonts resident on XANTÉ PostScript 3 printers.

Initdisk.ps file initializes the hard disk installed in your printer.



You must initialize a hard disk before it can be used to store downloaded fonts; factory installed disks are initialized already and ready to be used. Initializing a disk erases all information stored on the disk.

Netduplex.ps is not for use with the PlateMaker 4 printer.

Netpgoff.ps allows you to disable printing the network page which lists protocol settings for EtherTalk, IP, IPP, and LPR as well as Ethernet physical settings.

Netpgon.ps allows you to enable printing the network page which lists protocol settings for EtherTalk, IP, IPP, and LPR as well as Ethernet physical settings.

Parmdump.ps prints a list of each interface and its current settings.

Prnipsub.ps prints IP parameters including the IP address, subnet mask, and default gateway.

Ramdisk.ps allows you to set the size of the RAM disk feature.

Setip.ps allows you to set your printer's IP address. Open the file in a text editor, such as SimpleText, and change the IP address in the parentheses to your printer's IP address. Save and download the file to your printer. Restart the printer to make the change effective.

SetName.ps allows you to change the printer's name.

Setzone.ps allows you to set your printer's EtherTalk zone name. Open the file in a text editor, such as SimpleText, and change "name of zone" in the parentheses to the name of your EtherTalk zone. Save the file and download it to your printer. Restart the printer to make the change effective.

Startpg.ps allows you to print the printer's start-up page.

Startpgoff.ps disables the printer's start-up page feature, preventing the page from printing automatically each time the printer is restarted.

Startpgon.ps enables the printer's start-up page feature, causing the page to print automatically each time the printer is restarted.

Syspram.ps prints a list of current system parameters.

Using the Browser: Feature Access

You can access many printer features using your browser and the printer's home page utilities. The next sections cover going to the home page and accessing printer features, options, and information available there.

Printer Home Page

To access your printer's home page

1. Turn on your printer and then the computer.



You must assign the printer a valid IP address for you network before you can use the browser.

2. Open your browser and enter your printer's IP address. (This address appears on the printer start-up page.) The Printer Home Page appears (fig. 2.82).



Fig. 2.82 Printer Home Page

The home page has five major categories: Printer Configuration, Printer Information, Printer Maintenance, Printer Security, and Utility Pages.

Printer Configuration

Printer Configuration options include Informational Pages, Network, Pinbar Alignment, PostScript, Print Quality, Reset Factory Defaults, Storage Devices, and Trays and Media.

To access printer configuration features

1. Go to the printer home page (fig. 2.83). See “Printer Home Page” earlier in this chapter for details.



Fig. 2.83 Printer Home Page



Fig. 2.84 Printer Configuration Options

2. Select Printer Configuration (fig. 2.83); printer configuration options appear (fig. 2.84).

Informational Pages (Start Page, Low Toner Page, and Network Page)

The Information Pages window allows you enable or disable printing of the Start Page, Low Toner Page, and Network Page.

1. Go to the printer home page (fig. 2.85). See “Printer Home Page” earlier in this chapter for details.



Fig. 2.85 Printer Home Page



Fig. 2.86 Informational Pages Window

2. Select Printer Configuration: Informational Pages (fig. 2.85). The Informational Pages window appears (fig. 2.86).
3. Set start-up page, low toner page, and network page printing as desired (fig. 2.86).
 - a. Start Page: Select either On to enable start-up page printing or select Off to disable it. Then, click Change.
 - b. Low Toner Page: Select either On to enable low toner page printing or select Off to disable it. Then, click Change.
 - c. Network Page: Select either On to enable low toner page printing or select Off to disable it. Then, click Change.
4. Close your browser.



You also can control start-up page printing using the Startpgon.ps and Startpgoff.ps files. See “PS Files Folder” (Macintosh) earlier in this chapter.

Network (EtherTalk, General, and TCP/IP Configuration)

Network options allow you to control EtherTalk, General, and TCP/IP configuration.

EtherTalk Configuration

On an EtherTalk network with more than one zone, the network router assigns your printer a default zone. Check with your System Administrator to determine the correct zone for your printer; then, if necessary change the printer’s zone name. Also, if more than one printer of the same model is on the Ethernet network, you may want to change the printer name to avoid confusion or just to personalize the printer.

To configure EtherTalk settings

1. Go to the printer home page (fig. 2.87). See “Printer Home Page” earlier in this chapter for details.



Fig. 2.87 Printer Home Page



Fig. 2.88 EtherTalk Configuration Window

2. Select Printer Configuration: Network: EtherTalk (fig. 2.87). The EtherTalk Configuration window appears (fig. 2.88).
3. Enter the desired name for the printer (fig. 2.88); for example, you might name the printer Samson. Then, click Change to the right.
4. Enter the new name for the EtherTalk Zone Name (fig. 2.88). Then, click Change to the right.



EtherTalk zone names are limited to 32 characters, are not case sensitive, and cannot include the = (equal), \approx (approximately equal), * (asterisk), : (colon), or @ (at) characters.

5. Close your browser.

General Network Configuration

General configuration options allow you to set the network buffer.

1. Go to the printer's home page (fig. 2.89). See "Printer Home Page" earlier in this chapter for details.



Fig. 2.89 Printer Home Page



Fig. 2.90 General Configuration Window

2. Select Printer Configuration: Network: General (fig. 2.89). The General Network Configuration window appears (fig. 2.90).
3. Select the desired size for network buffers; then, click Change.
4. Close your browser; then, restart your printer to make the new size setting take effect.

TCP/IP Configuration

TCP/IP configuration includes the class, IP address, subnet mask, and DHCP options.



Your printer's default TCP/IP address should be changed to agree with your network's TCP/IP addresses. Check with your System Supervisor for the correct TCP/IP address.

To configure TCP/IP settings

1. Go to the printer home page (fig. 2.91). See "Printer Home Page" earlier in this chapter for details.



Fig. 2.91 Printer Home Page

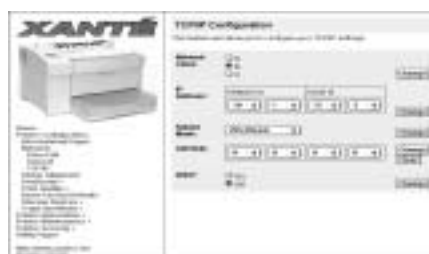


Fig. 2.92 TCP/IP Configuration Window

2. Select Printer Configuration: Network: TCP/IP (fig. 2.91). The TCP/IP Configuration window appears (fig. 2.92).
3. Check and change the following settings accordingly if necessary (fig. 2.92).
 - a. Change the TCP/IP address Network Class if necessary (check with your System Supervisor); then, click Change.
 - b. Change the printer's default TCP/IP address (Network and Node IDs) to the address assigned by your System Supervisor by using the scroll arrows beside each number; then, click Change.
 - c. Change the Subnet Mask if necessary; then, click Change. If you are using DHCP, continue to step 4.d; otherwise skip to step 4.
 - d. Select either DHCP On or DHCP Off and click Change.
4. Close your browser; then, restart your printer to make the new TCP/IP address take effect.

Pinbar Alignment

This feature allows you to print two lines at the top of your plates for use as an alignment tool for your plate punch. See chapter 4 for more information about Pinbar Alignment.

1. Go to your printer's home page (fig. 2.93). See "Printer Home Page" earlier in this chapter for details.



Fig. 2.93 Printer Home Page

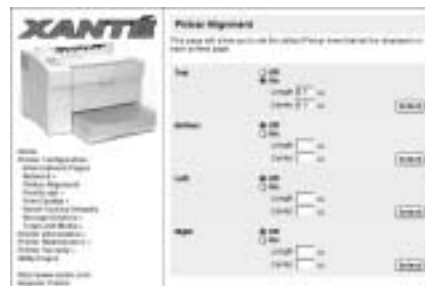


Fig. 2.94 Pinbar Alignment Window

2. Select Printer Configuration: Pinbar Alignment. The Pinbar Alignment window appears (fig. 2.94).
3. Select pinbar position by clicking ON; then, enter the appropriate position number.

Options are from a minimum of 0.0" (0 mm) to a maximum of 3.0" (76 mm) in increments of 0.1" (2.45 mm) from the center of the page. The factory default is 2.0" (51 mm).

4. Click Select after making the appropriate choice.
5. Close browser window.

PostScript Features (AccelaFont, DPI, Linearization, LPI, Margins, More X-ACT, and VM)

PostScript features include AccelaFont, DPI, Linearization, LPI, Margins, More X-ACT, and VM options.

AccelaFont

Accelafont options allow you to set aside a portion of RAM disk to store fonts for quick system access. AccelaFont automatically loads the most recently used fonts from the printer's optional hard disk into the RAM disk. This eliminates time usually required to access fonts from the hard disk.

Accelafont is active only if fonts are downloaded to an optional hard disk on the printer and RAM Disk is enabled for 1 MB or more. Options are 0% through 100% (the factory default) in 10% increments.



You also can set this feature using the front panel Utility: Font Accel configuration menu.

1. Go to the printer home page (fig. 2.95). See "Printer Home Page" earlier in this chapter for details.



Fig. 2.95 Printer Home Page



Fig. 2.96 AccelaFont Window

2. Select Printer Configuration: PostScript: AccelaFont (fig. 2.95). The AccelaFont window appears (fig. 2.96).
3. Select the desired percent of RAM Disk to allocate for AccelaFont from the Percentage drop-down menu (fig. 2.96). Options are 0% to 100% (the factory default) in 10% increments.

4. Click Change. Then, close your browser.

DPI

DPI allows you to set the printer's default DPI.

1. Go to the printer home page (fig. 2.97). See “Printer Home Page” earlier in this chapter for details.



Fig. 2.97 Printer Home Page



Fig. 2.98 Set Default DPI Window

2. Select Printer Configuration: PostScript: DIP (fig. 2.97). The Set Default DPI window appears (fig. 2.98).
3. Select the desired DPI for your printer from the Default DPI drop-down menu (fig. 2.98). Standard options are 600 x 600 DPI and 1200 x 1200 DPI; if the 2400 dpi upgrade is installed on your printer, then 2400 x 2400 DPI also appears in the drop-down menu.
4. Click Change. Then, close your browser.



You also can select the DPI through the printer's front panel. See “Resolution Options (DPI)” in chapter 4 for details.

Linearization

Linearization allows you to create and download custom curves to your printer. Seven different custom gamma curves can be created using this process.

You *must* use a densitometer capable of measuring dot area for the linearization process.



A densitometer, like any other precision instrument, *must* be calibrated *before* each use. Refer to your densitometer's documentation for instructions on calibrating and using the densitometer.

1. Go to the printer home page (fig. 2.99). See “Printer Home Page” earlier in this chapter for details.



Fig. 2.99 Printer Home Page



Fig. 2.100 Linearization Window

2. Select Printer Configuration: PostScript: Linearization (fig. 2.99). The Linearization window appears (fig. 2.100).
3. Linearize your printer using the following procedure (fig. 2.100).
 - a. Select the number of the custom gamma curve which you want to create from the Custom Gamma drop-down menu. Options are 0 through 6; the factory default is 0. Then, click Change.
 - b. Select the input source for printing the calibration page from the Input Tray options.
 - c. Select the LPI that will achieve 256 levels of gray from the LPI drop-down menu. Options are from 5 LPI to 210 LPI in increments of 1; the factory default is 85 LPI.



For 600 dpi, select 85 lpi; for 1200 lpi, select 106 lpi, for 2400 lpi, select 133 to 150 lpi. Any lpi may be used; measure the lpi that is to be used for final output.

- d. Select the desired resolution. Options are 600 dpi and 1200 dpi; also, if you have the 2400 dpi upgrade is installed on your system, 2400 dpi will appear.
- e. Select Calibration Page and click Print. A calibration page prints.

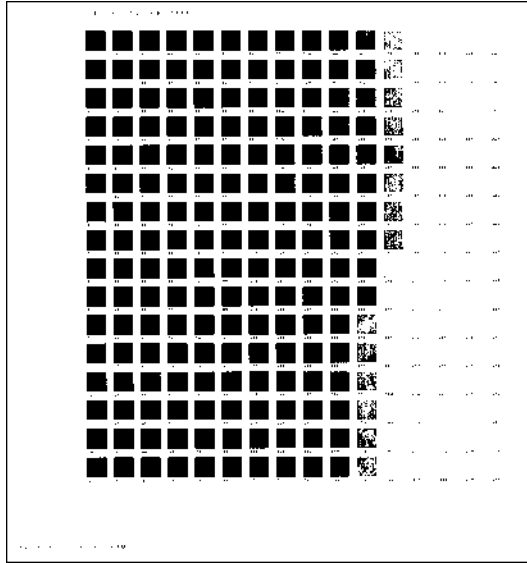


Fig. 2.101 Sample Calibration Page



Always print the calibration page using the same media and toner or press ink as used for the final copy. Also, when possible calibrate from the final output. For example, when calibrating for heavy paper, use heavy paper.

- f. Measure individual patches on the calibration page making sure that you first place the page on a white background. See your densitometer documentation for how to take the measurements.
- g. Make sure to enter the solid black (1) and solid white (2) measurements first. Enter the number of the patch whose densitometer measurement most closely matches (within $\pm 2\%$) the corresponding percentage in the Enter Coverage Values section.

For example, when you are reading for 2%, if the box labeled 7 measures 2%, enter the number 7 in the corresponding box.



Calibration page blocks are numbered from 0 to 255. You may have to check several blocks to find the one that most closely matches the percentage in the Densitometer Data Entry window. Also, it is not necessary to measure for each coverage value, but that is recommended to achieve more accurate results.

- h. Click Linearize (fig. 2.100).



To verify linearization, click the Print Verification Page button (2.100) and then click Print before you close the Linearization window. When this page prints compare it to the original calibration page to verify the gamma correction; you should see an improvement in gray scale progression.

4. Close your browser.

LPI (Default Setting)

LPI options allow you set the default Lines Per Inch (lpi) on your printer.

1. Go to the printer home page (fig. 2.102). See “Printer Home Page” earlier in this chapter for details.



Fig. 2.102 Printer Home Page



Fig. 2.103 Default LPI Window

2. Select Printer Configuration: PostScript: LPI (fig. 2.102). The Default LPI window appears (fig. 2.103).
3. Select the desired LPI for your printer from the Default LPI drop-down menu (fig. 2.103). Options go from 5 to 210 in single increments; the factory default is 85 LPI. Then, click Change.
4. Close your browser.



LPI also can be set through the printer’s front panel. See “Lines Per Inch (LPI)” in chapter 4 for details.

Margins (Printer Margin Adjustment)

The PostScript Margins feature allows you to adjust your PostScript printer margins so that your images will be positioned exactly on the page.



When you adjust margins for one page size, it affects all media sizes.

1. Go to the printer home page (fig. 2.104). See “Printer Home Page” earlier in this chapter for details.



Fig. 2.104 Printer Home Page



Fig. 2.105 PostScript Margins Window

2. Select Printer Configuration: PostScript: Margins (fig. 2.104). The PostScript Margins window appears (fig. 2.105).
3. Check and adjust the PostScript margins if necessary.
 - a. Click Update/Print. An alignment test page prints (fig. 2.105).

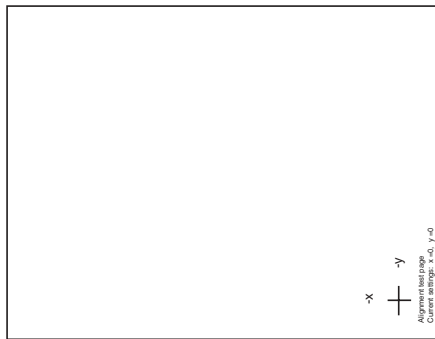


Fig. 2.106 Sample Alignment Test Page

- b. Turn the test page so that the -x is to the left and the -y is at the top of the crossed lines.
- c. Check the current settings listed on the test page. The factory default is $x=0$, $y=0$, which should cause each line to print 1" (25.4 mm) from the page's edges.

Coordinates listed on the alignment test page indicate change from the factory default in dots per inch. Because these measurements are rounded for display, adjustments should be based on careful measurements, not the printed coordinates.



If current settings are not the factory defaults and you must adjust the coordinates, you may reset factory default coordinates by selecting Reset Margins and clicking Update. Print another alignment test page using the factory defaults, measure the lines, and make adjustments if necessary.

- d. Measure the distance from the edge of the page to the -x line; it should measure 1" (25.4 mm). This distance is dependent on the y coordinate. If an adjustment needs to be made, use the following appropriate procedure.
 - To move the -x line away from the edge of the page, select an appropriate plus value in the X-Coordinate field.
 - To move the -x line closer to the edge of the page, select an appropriate minus value in the X-Coordinate field.
- e. Measure the distance from the edge of the page to the -y line; it should measure 1" (25.4 mm). This distance is dependent on the x coordinate. If an adjustment needs to be made, use the following appropriate procedure.
 - To move the -y line away from the page's edge, select an appropriate plus value in the Y-Coordinate field.
 - To move the -y line closer to the page's edge, select an appropriate minus value in the Y-Coordinate field.



You can preview a coordinate change's effect on image placement. To do this, change the x and y coordinates as desired; then, click View Coordinates. The + shifts accordingly on the screen page and the original position appears as a gray + (fig. 2.107). This is only a preview; the change will not take effect unless you click Update/Print.



Fig. 2.107 View Coordinates Window

- f. Print another alignment page (see step 3).

- g. Measure the -x and -y lines on the new test page. If the lines are not each 1" (25.4 mm) from the edge of the paper, go back to step 3c and repeat the process.

- 4. Close your browser when the -x and -y lines are set correctly.

More X-ACT

Use XANTÉ's patented X-ACT technology to calibrate printer line lengths to exact dimensions. You can save a different set of More X-ACT values for each different media type your printer supports.

You need a metric ruler to complete this procedure.

- 1. Go to the printer home page (fig. 2.108). See "Printer Home Page" earlier in this chapter for details.



Fig. 2.108 Printer Home Page



Fig. 2.109 More X-ACT Window

- 2. Select Printer Configuration: PostScript: More X-ACT (fig. 2.108). The More X-ACT window appears (fig. 2.109).
- 3. Follow the directions in the More X-ACT window to calibrate your printer's output to exact dimensions.



More X-ACT is a cumulative process. If you are not satisfied with the calibration, you may want to repeat the calibration process. Also, you can reset calibration values to factory defaults by clicking Reset in the More X-ACT window.

4. Close your browser after you finish the calibration and are satisfied with the results.



You also can use the printer's front panel X-ACT feature to calibrate dimensions. See "Accurate Calibration Technology (X-ACT)" in chapter 4 for details.

VM (Virtual Memory)

The VM option allows you to adjust the size of your PostScript virtual memory in Megabytes. This setting controls the printer's default virtual memory setting at power up.

1. Go to the printer home page (fig. 2.110). See "Printer Home Page" earlier in this chapter for details.
2. Select Printer Configuration: PostScript: VM (fig. 2.110). The VM window appears (fig. 2.111).



Fig. 2.110 Printer Home Page

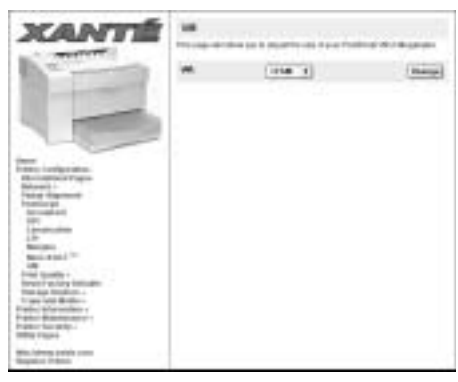


Fig. 2.111 VM Window

3. Select the desired amount of memory to set aside for virtual memory at power up (fig. 2.111); the minimum value allowed is 9 MB, 12 MB is the factory default setting, and the maximum value is 40% of the installed RAM.
4. Click Change. Then, close your browser.

Print Quality (EP1, Fuser Temperature, NEIT, and Print Density)

Print Quality has EP1, Fuser Temperature, NEIT, and Print Density options.

EP1 (Electrophotography, Toner Control)

EP1, part of XANTÉ's new CPT (Clean Plate Technology), allows you to control the level of toner transferred from the toner drum to the media to control toning.

1. Go to the printer home page (fig. 2.112). See "Printer Home Page" earlier in this chapter for details.



Fig. 2.112 Printer Home Page



Fig. 2.113 Default EP1 Window

2. Select Printer Configuration: Print Quality: EP1 (fig. 2.112). The Default EP1 window appears (fig. 2.113).
3. Select the type of media for which you want to set the EP1 from the Media Type drop-down menu (fig. 2.113). Then, Click Change.
4. Select the EP1 settings from the EP1: field. Options are 0 up to 15. The default setting depends on the selected media. The default for paper and film is 10; the default for plate is 0. Then, click Change.
5. Close the browser.

Fuser Temperature

Fuser Temperature allows you to change your printer's default fuser temperature settings for each media type.

1. Go to the printer home page (fig. 2.114). See "Printer Home Page" earlier in this chapter for details.



Fig. 2.114 Printer Home Page



Fig. 2.115 Default Fuser Temperature Window

2. Select Printer Configuration: Print Quality: Fuser Temperature (fig. 2.114). The Default Fuser Temperature window appears (fig. 2.115).
3. Select the type of media for which you want to set the temperature from the Media Type drop-down menu (fig. 2.115). Then, Click Change.
4. Select the desired temperature for the media selected in step 3 from the Fuser Temperature drop-down menu (fig. 2.115). Options are 0-none to 15-hot. Select 0-none or 1 when printing to Myriad film, envelopes, and paper. Select hotter settings for heavy paper, heavy film, and Myriad 2 or 4 plates. Then, click Change.
5. Close the browser.



You also can set (the fuser temperature through the printer's front panel. See "Fuser Temperature" in chapter 4 for details.

NEIT (Negative Enhanced Imaging Technology)

NEIT is a laser power setting that is used for negative prints. Choosing a lower setting increases laser power and causes the output to be darker. Choosing a higher setting decreases laser power and causes the output to be lighter. This page will allow you to change your default NEIT settings for each media type.

1. Go to the printer's home page (fig. 2.116). See "Printer Home Page" earlier in this chapter for details.



Fig. 2.116 Printer Home Page



Fig. 2.117 NEIT Settings Window

2. Select Printer Configuration: Print Quality: NEIT. The NEIT Setting window appears (fig. 2.117).
3. Select Matte Film from the drop-down menu and click Change.



This section can only be used if you are printing a negative to Matte Film.

4. Select the NEIT laser power setting for your negative. The factory default is 10. Then, click Change.
5. Close browser window.

Print Density

This feature allows you to adjust the density of toner on your printed page. Density options range from 0 (light) to 7 (dark). The factory default is 4.

1. Go to the printer's home page (fig. 2.118). See "Printer Home Page" earlier in this chapter for details.



Fig. 2.118 Printer Home Page



Fig. 2.119 Printer Density Window

2. Select Printer Configuration: Print Quality: Print Density. The Print Density Window appears (fig. 2.119).
3. Select the density level for your printer in increments of 1. Then, select Change.
4. Close browser window.

Reset Factory Defaults

Reset Factory defaults allows you to reset the printer name and EtherTalk Zone, to enable start-up page and low toner page printing, to enable DHCP, and to reset PostScript margins to factory default settings.



If you select reset to factory default, enabling DHCP could affect your IP address.

1. Go to the printer home page (fig. 2.120). See “Printer Home Page” earlier in this chapter for details.



Fig. 2.120 Printer Home Page



Fig. 2.121 Reset Factory Defaults Window

2. Select Printer Configuration: Reset Factory Defaults (fig. 2.120). The Print Reset Factory Defaults window appears (fig. 2.121).
3. Click Reset Factory Defaults. Your printer will restart and the changes will be in effect.



Factory defaults also may be reset using the printer’s front panel keys. See “Resetting to Factory Defaults” in chapter 4 for details.

Storage Devices (Hard Disk and RAM Disk)

Storage Devices allows you to display current hard disk and RAM disk settings and configure the device.

To display hard disk settings and configure the device

1. Go to the printer home page (fig. 2.122). See “Printer Home Page” earlier in this chapter for details.



Fig. 2.122 Printer Home Page



Fig. 2.123 Hard Disk Settings Window

2. Select Printer Configuration: Storage Devices: Hard Disk (fig. 2.122). The Hard Disk Settings window appears (fig. 2.123) showing current settings. If you want to reformat the hard disk, continue to step 3; if not, skip to step 4.

3. Click Format; a warning window informs you that formatting the disk will erase everything on it. If you want to continue, click Proceed With Format; otherwise, continue to step 4.



Fig. 2.124 Warning Window

4. Close your browser.



You also can format a hard disk via the printer's front panel. For details, see "Hard Disk" in chapter 4.

To display RAM disk settings and configure the device

1. Go to the printer home page (fig. 2.125). See "Printer Home Page" earlier in this chapter for details.



Fig. 2.125 Printer Home Page



Fig. 2.126 RAM Disk Settings Window

2. Select Printer Configuration: Storage Devices: RAM Disk (fig. 2.125). The RAM Disk Settings window appears (fig. 2.126) showing current settings. If you want to change the capacity setting, continue to step 3; to reformat the RAM disk device, skip to step 4. Otherwise, skip to step 5.

3. Select the desired capacity setting from the Capacity drop-down menu. Then, if you want to reformat the RAM disk device, continue to step 4. Otherwise, skip to step 5.
4. Click Change (fig. 2.126); a reboot message and Reboot button appear in the window. Then, click Reboot and a message lets you know that your printer is rebooting.



You must reboot the printer to make to capacity change take effect.

5. Close your browser. Then, reboot your printer to make the change take effect.



You also can set aside RAM disk space using the printer's front panel Utility: RAM Disk menu. For details, see "RAM Disk" in chapter 4.

Trays and Media

Trays and Media options allow you to choose the default input tray and media types.

Default Input Tray

Default Input Tray allows you to set your printer's default input tray.

1. Go to the printer home page (fig. 2.127). See "Printer Home Page" earlier in this chapter for details.



Fig. 2.127 Printer Home Page



Fig. 2.128 Default Input Tray Window

2. Select Printer Configuration: Trays and Media: Default Media Tray (fig. 2.127). The Media Types window appears (fig. 2.128).
3. Select the desired default tray from the Input Tray drop-down menu (fig. 2.128). Then, click Change.
4. Close your browser.



You also can select a tray using the printer's Tray Select key as well as enable tray chaining from the printer's front panel. For details, see "Tray Selection Options" in chapter 4.

Media Types

Media Types options allow you to configure the media type for each of your printer's input sources.

1. Go to the printer home page (fig. 2.129). See "Printer Home Page" earlier in this chapter for details.



Fig. 2.129 Printer Home Page



Fig. 2.130 Configure Media Types Window

2. Select Printer Configuration: Trays and Media: Media Types (fig. 2.129). The Media Types window appears (fig. 2.130).
3. Select the desired media type for the input source (fig. 2.130). Options are Paper (the factory default), Transparency, Cover Stock Label Stock, Paper Plate, Polyester Plate, Matte Film, Clear Film, Heavy Paper, and UserDef (User Defined) 1 through 5. Then, click Change.



If an optional cassette is installed, you can designate the type of media for it.

4. Close your browser.



You also can configure the media type through your printer's front panel. See "Media Types" in chapter 4 for details.

Printer Information

Printer Information options allow you to access printer diagnostic, general, I/O setting, and option information.

1. Go to the printer home page (fig. 2.131). See “Printer Home Page” earlier in this chapter for details.



Fig. 2.131 Printer Home Page



Fig. 2.132 Printer Information Options.

2. Select Printer Configuration: Printer Information (fig. 2.131). Printer Information Options appear (fig. 2.132).

The Printer Information options include Diagnostic Information, General Information, I/O Settings, and Installed Options.

Diagnostic Information

The Diagnostic Information option allows you to check your printer’s E-Prom’s status.

1. Go to the printer home page (fig. 2.133). See “Printer Home Page” earlier in this chapter for details.



Fig. 2.133 Printer Home Page



Fig. 2.134 Diagnostic Information Window

2. Select Printer Information: Diagnostic Information (fig. 2.133). The Diagnostic Information window appears (fig. 2.134).
3. Check the right side of the window (fig. 2.134) to determine the condition of your printer’s E²Prom.



If the E²Prom condition is good, you don't have to do anything; if it is bad or missing, contact XANTÉ Technical support.

4. Close your browser.

General Information

The General Information option lists miscellaneous printer details. These include the product name, PostScript version, current firmware revision, boot RAM version, RAM size, engine speed, page count, and PostScript margin settings as well as whether the start-up-page and low toner page printing is enabled (on) or disabled (off).

1. Go to the printer home page (fig. 2.135). See “Printer Home Page” earlier in this chapter for details.



Fig. 2.135 Printer Home Page



Fig. 2.136 General Information Window

2. Select Printer Information: General Information (fig. 2.135). The General Information window appears (fig. 2.136).
3. Check the desired printer information (fig. 2.136); then, close your browser.

I/O Settings

I/O settings has AppSocket, EtherTalk, IP, LPR, and Parallel options, each of which displays current printer settings for its network protocol.

1. Go to the printer home page (fig. 2.137). See “Printer Home Page” earlier in this chapter for details.



Fig. 2.137 Printer Home Page



Fig. 2.138 I/O Settings Window

2. Select Printer Information: I/O Settings (fig. 2.137). The I/O Settings window appears (fig. 2.138).

3. Select the desired protocol (AppSocket, EtherTalk, IP, LPR, or Parallel) (fig. 2.138); then, check its settings.

a. The AppSocket Information Page (fig. 2.139) lists On, Type, Enabled, Protocol, Interpreter, PrinterControl, and OutputDevice settings.



Fig. 2.139 AppSocket Information Page



Fig. 2.140 EtherTalk Information Page

b. The EtherTalk Information Page (fig. 2.140) lists On, Type, Enabled, HasNames, Interpreter, EtherTalkType, EtherTalkZone, EthernetAddress, DelayedOutputClose, Printer Control, OutputDevice, and Filtering settings.

c. The IP Information Page (fig. 2.141) lists On, Type, IP Address, NetworkMask, GatewayAddress, BroadcastAddress, IP AddressDynamic, TransmitEncapsulation, and Physical settings.



Fig. 2.141 IP Information Page



Fig. 2.142 IPP Information Page

d. The IPP Information Page (fig. 2.142) lists On, Type, Enabled, Interpreter, DelayedOutputClose, PrinterControl, HasNames, and OutputDevice settings.

e. The LPR Information Page (fig. 2.143) lists On, Type, Enabled, Interpreter, DelayedOutputClose, PrinterControl, Filtering, PrintHost, HasNames, OutputDevice, ReceiveWindowSize, and SendWindowSize settings.



Fig. 2.143 LPR Information Page



Fig. 2.144 Parallel Information Page

- f. The Parallel Information Page (fig. 2.144) lists On, Type, Enabled, Protocol, DelayedOutputClose, Interpreter, PrinterControl, HasNames, Handshake, nAckPulseWidth, nStrobeExpectedPulseWidth, and OutputDevice settings.
- g. The USB Information Page (fig. 2.145) lists On, Type, Enabled, Protocol, DelayedOutputClose, Interpreter, PrinterControl, HasNames, and OutputDevice settings.



USB is for PC *only*.



Fig. 2.145 USB Information Page

4. Close your browser.

Installed Options

The Installed Options option allows you to check the installation status of your printer's options.

1. Go to the printer's home page (fig. 2.146). See "Printer Home Page" earlier in this chapter for details.



Fig. 2.146 Printer Home Page



Fig. 2.147 Installed Options Window

2. Select Printer Information: Installed Options (fig. 2.146). The Installed Options window appears (fig. 2.147).
3. Check the right side of the window (fig. 2.147) to determine the installation status of the printer's options.



Options not applicable to your printer may still appear in the options list; their status will be listed as Not Installed.

4. Close your browser.

Printer Maintenance

The Printer Maintenance option allows you to access your printer's cleaning feature.

1. Go to the printer home page (fig. 2.148). See "Printer Home Page" earlier in this chapter for details.
2. Select Printer Maintenance: Clean Printer. The Clean Printer window appears (fig. 2.149).



Fig. 2.148 Printer Home Page



Fig. 2.149 Clean Printer Window

3. Click Clean Printer (fig. 2.149) to run the clean printer feature which cleans the printer's fuser roller.
4. Close your browser.

Printer Security

This feature is designed to prevent unwanted changes to the printer configuration. Some of the printer features that are configurable from the printer's web page can be locked by setting a password to that printer.

Login and Logout

1. Go to the printer's home page (fig. 2.150). See "Printer Home Page" earlier in this chapter for details.



Fig. 2.150 Printer Home Page



Fig. 2.151 Login Window

2. Select Printer Security: Login (fig. 2.150). The Login window appears (fig. 2.151).
3. Enter your password in the Password field (fig. 2.151).
4. Click Submit. You now can access the secure webpage areas. When you are through, select Printer Security: Logout (fig. 2.151). The Logout window appears (fig. 2.152).



Fig. 2.152 Logout Window

5. Click Submit. When a message appears that you are now logged out, close the browser.

Set Password

Set Password allows you to set your printer's password to access the secure webpage areas.

1. Go to the printer home page (fig. 2.153). See "Printer Home Page" earlier in this chapter for details.



Fig. 2.153 Printer Home Page

2. Select Printer Security: Set Password. A Set Password window appears (fig. 2.154 or fig. 2.155).



Fig. 2.154 Set Password Window (1)



Fig. 2.155 Set Password Window (2)

If you do not have a password: When figure 2.154 appears, skip to step 3.

If you have a password: When figure 2.155 appears, enter your password in the Current Password field and then continue to step 3.

3. Type in a password of your choice (up to 8 characters in length) in the New Password field (fig. 2.154 or fig. 2.155); then, reenter that new password in the Re-enter Password field.
4. Click Submit. You now can access the secure webpage areas. When you are through, select Printer Security: Logout (fig. 2.155). The Logout window appears (fig. 2.152).
5. Click Submit. Then, close the browser.

This new password will be required every time you log onto your printer's webpage.

Changing/Resetting the Password

If you wish to change your password or have forgotten it, you can reset it by using the following sequence from the Printer Security section (fig. 2.151):

LOGIN: LOGOUT: LOGIN: HOME: LOGIN: SET PASSWORD

Simply go to these pages, in this order to reset your password. Then, just follow the steps on how to set the password from the previous section.

Utility Pages

The Utility Pages option allows you to print the following four utility pages:

Start Page — prints a page with basic printer information such as the printer's current name, resolution, page count, amount of installed RAM, number of resident fonts, EtherTalk and LPR status, and the Ethernet and IP addresses.

Low Toner Page — prints a toner reorder form which you can fill out and return to XANTÉ or your XANTÉ vendor.

Network Page — prints a page listing current network EtherTalk, IP, IPP, LPR, and Ethernet physical settings.

Font List Page — prints a list of the Adobe PostScript 3 fonts resident on your XANTÉ PostScript 3 printer.

Font Sample Page — prints samples of Adobe PostScript 3 fonts resident on your XANTÉ PostScript 3 printer.

Menu Layout — prints a page listing the front panel menus and their current settings.

1. Go to the printer home page (fig. 2.156). See “Printer Home Page” earlier in this chapter for details.



Fig. 2.156 Printer Home Page



Fig. 2.157 Utilities Pages Window

2. Select Utility Pages (fig. 2.156). The Utilities Pages window appears (fig. 2.157).
3. Select Print to the right of the utility page you wish to print (Start Page, Low Toner Page, Network Page, Font List Page, Font Sample Page, or Menu Layout Page). Depending on the selected page, printing takes approximately 6 to 30 seconds.
4. Close your browser.

XANTÉ Web Access (XANTÉ Web Site, Register Printer, and Help)

When you are on-line, you can access XANTÉ's web site, register your printer, or obtain technical help.

1. Go to the printer home page (fig. 2.158). See "Printer Home Page" earlier in this chapter for details.



Fig. 2.158 Printer Home Page

2. Select the desired web access, <http://www.xante.com> (XANTÉ's web site), Register Printer, or Help (fig. 2.158). When the selected site's window appears, take the following appropriate action.
 - a. **<http://www.xante.com>:** Browse the web site for desired information. This site offers fast access to product, support, contact, trade show, career, XANTÉ, and other printer related information. When you finish, skip to step 3.
 - b. **Register Printer:** Fill out and submit the registration form. Then, skip to step 3.
 - c. **Help:** Browse XANTÉ's Support site for the desired information. You can search for information by product links, by topics through the search option, or by the Frequently Asked Questions option (fig. 2.159).



Fig. 2.159 Support Window

3. Close your browser when you finish.



You also can register your printer or access XANTÉ on-line support through your XANTÉ Utilities. See “Register On-line” and “Access XANTÉ On-line Support” earlier in this chapter for details.

Managing Fonts

Fonts downloaded to your printer are considered resident, which means applications do not have to bundle these fonts with print jobs. You can download additional fonts to the printer's memory. Fonts downloaded to printer memory remain only through the current power cycle.



Fonts downloaded to memory may cause PostScript errors due to insufficient memory. To solve this, increase printer memory or add an optional hard disk and download the fonts to it.

You can download Adobe Downloader from Adobe's website (see "Adobe Web Site Access" later in this chapter for details). Use this program to load and manage font files in your printer and to send PostScript files to your printer.

To download Macintosh fonts

1. Open the Adobe Downloader and select File: Download Fonts to bring up the following window (fig. 2.160).

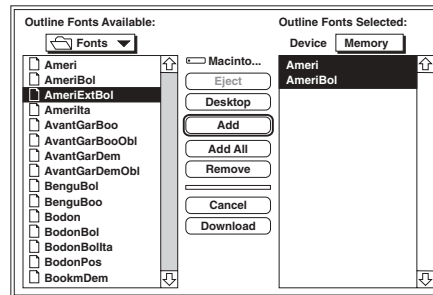


Fig. 2.160 Download Font Window

2. Select the folder on your Macintosh that contains the font files from the drop-down menu on the top left of the window (fig. 2.160). The large box on the left displays the fonts in the selected folder.
3. Select Memory or Disk from the Device menu as the destination for the downloaded fonts (fig. 2.160).



If more than one optional hard disk is attached to your printer, select the target disk from the drop-down menu.

4. Highlight a single font in the list on the left and click Add or click Add All to select all of the fonts in the open folder. The selected font(s) will appear in the list on the right of the screen (fig. 2.160).



To remove fonts from the selected list (on the right of the screen), highlight the fonts and click Remove.

5. Click Download to send the selected fonts to the printer.
6. Wait until download is complete; then, select File: Quit to close the Adobe Downloader.

To review and remove downloaded fonts

1. Open the Adobe Downloader and select Special: Printer Font Directory. The following window appears (fig. 2.161).



Fig. 2.161 Directory Location Window



Fig. 2.162 Font Directory Window

2. Choose Printer or Screen (fig. 2.161) and then click OK. If you select Printer, a list of the printer's resident fonts prints; if you select Screen, the Font Directory window appears (fig. 2.162).



To print a list of resident fonts in ROM, use Adobe Downloader's File: Download PostScript File option to download the Fonts.ps file (or download the Fontsamp.ps file to see a sample of these fonts).

3. Select the font storage area (i.e. Memory) from the Device menu to view the fonts present in that area.
4. Remove a font from printer memory by highlighting the font and clicking Delete.
5. Click OK to close the Font Directory window and return to the Adobe Downloader main menu.



To remove fonts downloaded to printer memory, turn the printer off. Fonts are stored in printer memory only during the current power cycle.

Reconfiguring the PPD after Adding Options

If you change options after initial printer setup, such as installing an optional feeder and tray or a memory upgrade, you need to reconfigure the PPD to reflect the change(s). Use the following procedure to update the PPD configuration. The optional 2400 dpi upgrade is used as an example for this procedure.

1. Select Chooser from the Apple menu. The Chooser Window appears (fig. 2.163).



Fig. 2.163 Chooser Window



Fig. 2.164 Installable Options Window

2. Select AdobePS in the left side of the window; then, select your printer in the right side and click Setup (fig. 2.164). A PPD Configuration window appears (fig. 2.165).



Fig. 2.165 PPD Configuration Window



Fig. 2.166 Installable Options Window

3. Select Configure (fig. 2.165). The printer's Installable Options window appears (fig. 2.166).
4. Select the appropriate upgrade from the corresponding drop-down menu (fig. 2.166). For example, if you installed 2400 dpi upgrade, select 2400 DPI from the Resolution Option drop-down menu.
5. Click Ok. Then, close the Chooser window when it reappears (fig. 2.166).

Now, the PPD is configured for the new resolution; 2400 dpi will be available through your applications.

Adobe Web Site Access

You can use your printer utilities to access the Adobe Systems web site to check for updates (such as new versions of ATM) and plug-ins or to download files. To do this, use the Web menu or the Adobe Downloads option in the Web Information drop-down menu on the Main Installation window.

1. Insert the XANTÉ Utilities CD-ROM into your Macintosh. The main Installation window should open automatically (fig. 2.167). If not, double-click the CD-ROM icon; then, double-click the Setup icon.



Fig. 2.167 Main Installation Window



Fig. 2.168 Web Menu

2. Select Adobe Downloads from the Web Information drop-down menu (fig. 2.167) or select it from the Web menu (fig. 2.168). Your web browser launches and takes you to the product Adobe's web site.
3. Follow instructions on Adobe's site to locate and download any desired files.
4. Close your web browser when you are finished. You return to the Main Installation window (fig. 2.167).
5. Close the Main Installation window (fig. 2.167).

Older Application Support

Older applications sometimes requires special files. This section covers several of those files. Also, XANTÉ's web site (www.xante.com) has details on working with some older popular programs.

Application PPDs and PDFs Files

PPD and PDF files are required for a variety of applications including PageMaker, QuarkXPress, and ScenicSoft Preps. The XANTÉ Utilities CD-ROM contains these files for your printer.

PPD and PDF files are loaded onto your system during the Install Printer process.

App Drivers Folder

Some Adobe PageMaker and FreeHand versions, QuarkXPress, and ScenicSoft Preps applications require specialized files in addition to the standard PPD supplied for your printer. These files are in the OS8_9: App Drivers folder on the XANTÉ's CD-ROM.



Some advanced XANTÉ printer features may not be available when using older application versions. Also, APD (Adobe Printer Description) files for Adobe PageMaker versions 4.01 and earlier are available from XANTÉ Technical Support.

PageMaker 5 PPD Folder

The PageMaker 5 PPD folder contains your printer's PM5 PPD for Aldus PageMaker versions 4.2 to 5.0 and Aldus FreeHand versions 3.0 and 3.1. To install these PPDs

1. Load and configure the Adobe PostScript printer driver and your printer's PPD following instructions in "Install Printer" earlier in this chapter.
2. Copy your printer's PPD from the CD-ROM's OS8_9: App Drivers: PageMaker 5 PPD folder to the System: Aldus PPD folder on your Macintosh.
3. Check your application documentation for details on selecting and using the PPD.

QuarkXPress PDF Folder

The QuarkXPress PDF folder contains the PDF (Printer Description File) for your XANTÉ printer. QuarkXPress versions 3.3.X and earlier require this file in addition to the PPD to ensure the highest quality output from your printer and QuarkXPress.

Install Printer loads the QuarkXPress PDF automatically. To load these PDFs manually

1. Load and configure the Adobe PostScript printer driver and your printer's PPD following instructions in "Install Printer" earlier in this chapter.
2. Copy your printer's PDF from the CD-ROM's XanteInstallers: App Drivers: QuarkXPress PDF folder to the appropriate folder on your Macintosh.



For versions 3.3.X and earlier, copy the printer's PDF to the QuarkXPress application/PDF folder.

QuarkXPress 4.X uses your printer's PPD file (it does not need a PDF). To load a PPD file manually, copy your printer's PPD from the CD-ROM's Printer Descriptions folder to the System Folder: Extensions: Printer Descriptions folder on your Macintosh.



Remove “Balloon Help” from the Quark folder for QuarkXPress 3.3.2.

ScenicSoft Preps Folder

The ScenicSoft Preps folder contains PPD and PDX files for your printer. Print Install installs these files automatically if you have the ScenicSoft Preps application on your system.

◇◇◇