

What your 3 Year Warranty means:

Great care has gone into the manufacture of this product and it should therefore provide you with years of good service when used properly. In the event of product failure within its intended use over the course of the first 3 years after date of purchase, we will remedy the problem as fast as possible once it has been brought to our attention. In the unlikely event of such an occurrence, or if you require any information about the product, please contact us via our helpline support service, details of which are to be found both in this manual and on the product itself.

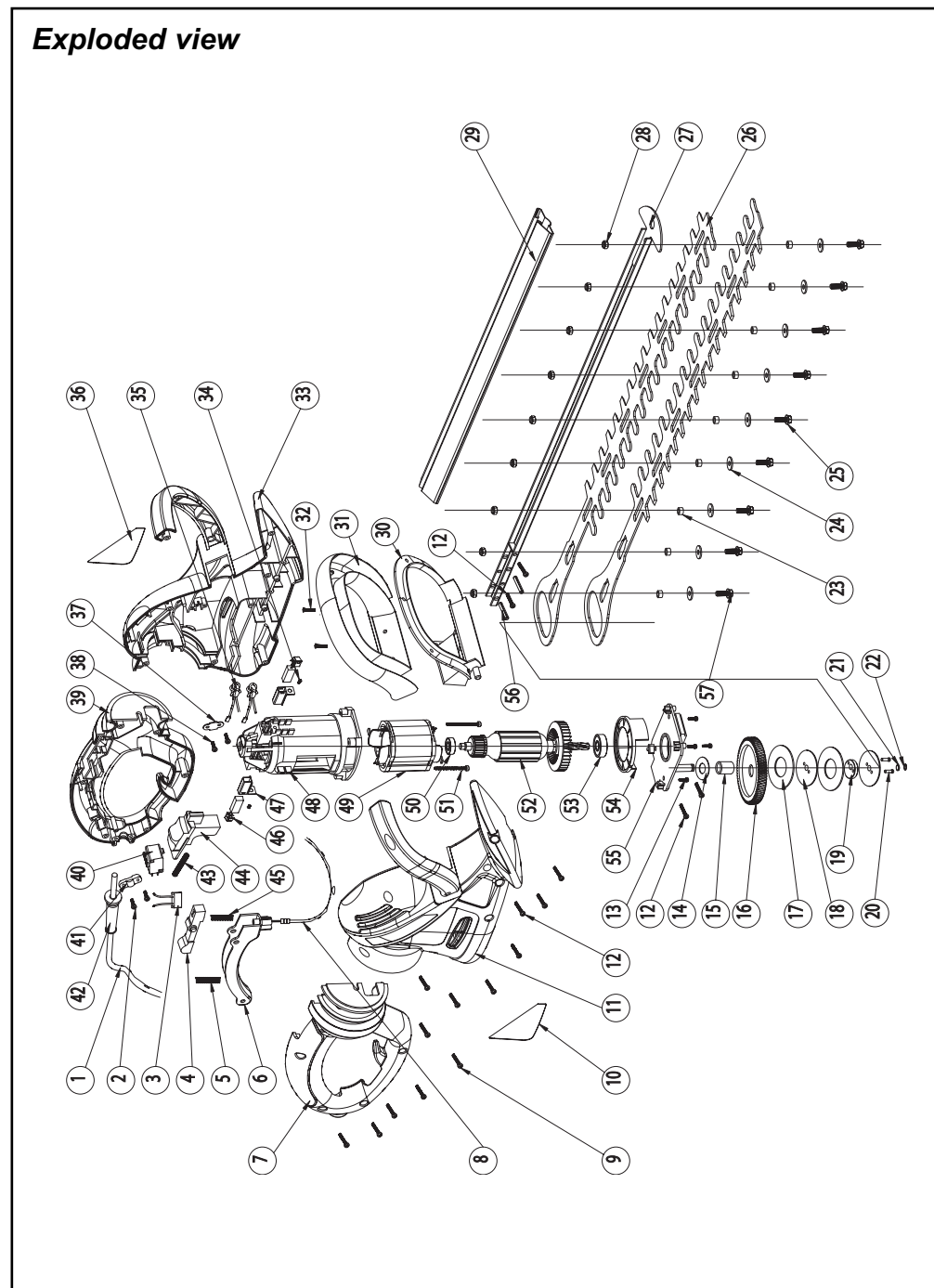
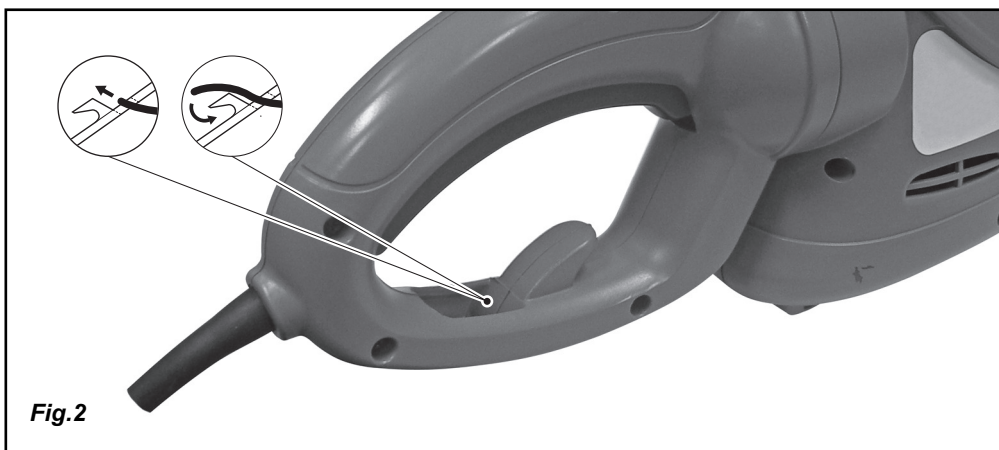
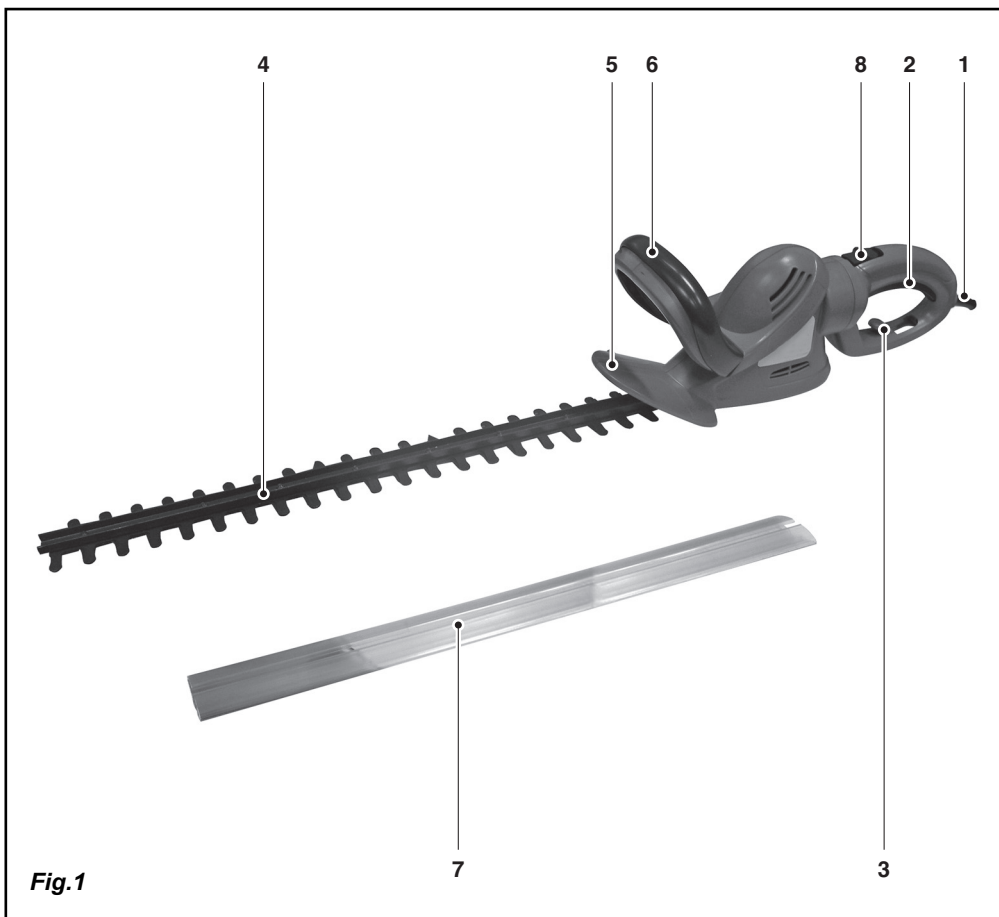
This does not affect your statutory rights.



AFTER SALES SUPPORT

UK Help Line: 0870 - 7323023
IRELAND Help Line: 1800 - 481005
Web Support: www.servotool.nl





Spare parts list

Position	Description	No.
4, 5, 6, 30, 31, 32	Switch complete	402006
8	Brake cable	402007
16	Big gear	402008
17 till 22	Excentric complete	402009
23 till 28	Blade holder complete	402010
26	Blade	402011
46	Carbon brush	402012
49	Stator	402013
50	Bearing 607ZZ	800607
52	Rotor	402014
53	Bearing 629ZZ	800629

HEDGE TRIMMER

The numbers in the following text correspond with the pictures at page 2.



Read this manual carefully, before using the machine. Ensure that you know how the machine works, and how it should be operated. Maintain the machine in accordance with the instructions, and make certain that the machine functions correctly. Store this manual and other enclosed documentation with the machine.

Contents

1. Machine information
2. Safety instructions
3. Operation
4. Maintenance

1. MACHINE INFORMATION

Technical specifications

Voltage	230 V~, 50 Hz
Input power	620 W
No load speed	1600/min
Cutting length	610 mm
Tool class	II
Maximum cutting thickness	20 mm
Weight	4.1 kg
Lpa (sound pressure level)	91.0 dB(A)
Lwa (sound power level)	104.0 dB(A)
Outdoor noise	104.0 dB(A)
Vibration	4.0 m/s ²

Contents of packing

- 1 Main Body
- 1 Blade cover
- 1 Instruction manual
- 1 Safety instructions
- 1 Warranty card

Please inspect the machine and accessories for transit damage.

Features

Fig.1

1. Power Cable
2. ON/OFF trigger
3. Power Cord Hanger

4. Cutting Blade
5. Safety Guard
6. Safety Switch
7. Transport protection
8. "Un-Lock" button rotating handle

2. SAFETY INSTRUCTIONS

Explanation of symbols



Read instructions carefully.



In accordance with essential applicable safety standards of European directives.



Class II machine – Double insulation – You don't need any earthed plug.



Denotes risk of personal injury, loss of life or damage to the tool in case of non-observance of the instructions in this manual.



Indicates electrical shock hazard.



Immediately unplug the plug from the mains electricity in the case that the cord gets damaged and during maintenance.



Wear ear and eye protection.



Wear protective gloves



Keep bystanders away.



Do not expose to rain.



Faulty and/or discarded electrical or electronic apparatus have to be collected at the appropriate recycling locations.

General safety instructions

Attention! When using electric machines always observe the safety regulations applicable in your country to reduce the risk of fire, electric shock and personal injury. Read the following safety instructions and also the enclosed safety instructions. Keep these instructions in a safe place!

1. Keep work area clear

Cluttered areas and benches invite injuries.

2. Consider work area environment

Do not expose power tools to rain. Do not use power tools in damp or wet locations. Keep work area well lit. Do not use power tools in presence of flammable liquids or gases.

3. Guard against electric shock

Prevent body contact with grounded surfaces (e.g. pipes, radiators, refrigerators).

4. Keep visitors away

Visitors should be kept away from the work area at all times. Do not let visitors handle the machine at any time.

5. Store unused tools

When not in use keep tools out of reach of children. Store in a dry and secure location.

6. Do not force tool

Do not apply undue pressure as this may affect performance and may cause damage to the machine. Forcing the job also increases the potential for accidents.

7. Use right tool

Do not force small tools or attachments to do the job of heavy duty tool. Do not use a tool for purposes not intended.

8. Dress properly

Always wear appropriate personal protective equipment (PPE). Do not wear loose clothing or Jewellery. They can be caught in moving parts. Protective gloves and non-skid/toe protected footwear are recommended when working outdoors. Wear protective hair covering to contain long hair.

9. Use safety glasses

Also use face or dust mask when operation is dusty.

10. Do not abuse cord

Never carry tool by cord or yank it to disconnect it from electrical socket. Keep cord from heat, oil and sharp edges.

11. Do not overreach

Keep proper footing and balance at all times.

12. Maintain tools with care

Keep tools sharp and clean for better and safer performance. Follow instructions for lubricating and changing accessories. Inspect tool cords periodically and, if damaged, have repaired by authorized service facility. Inspect extension cords periodically and replace if damaged. Keep handles dry, clean and free from oil and grease.

13. Disconnect tools

When not in use, before servicing and when changing accessories such as blades, bits and cutters.

14. Remove adjusting keys and wrenches

Form the habit of checking to see that keys and adjusting wrenches are removed

from tool before turning it on.

15. Avoid unintentional starting

Do not carry plugged-in tools with finger on switch. Be sure switch is off when plugging in.

16. Outdoor use extension cords

When tool is used outdoors, use only extension cords intended for use outdoors and so marked. Always use tool in conjunction with a residual circuit breaker device.

17. Stay alert

Watch what you are doing. Use common sense. Do not operate tool when you are tired.

18. Check damaged parts

Before further use of the tool, a guard or other part that is damaged should be carefully checked to determine that it will operate properly and perform its intended function. Check for alignment of moving parts, binding of moving parts, breakage of parts, mounting, and any other conditions that may affect its operation. A guard or other part that is damaged should be properly repaired or replaced by an authorized service centre unless otherwise indicated elsewhere in this instructions manual. Have defective switches replaced by an authorized centre. Do not use tool if switch does not turn on and off.

19. Warning

The use of any other accessory or attachment other than recommended in this operation instructions or the catalogue may present a risk of personal injury.

20. Have your tool repaired by an expert

This appliance is manufactured to very high standards and meets relevant safety regulations. Repairs should only be done by a suitable qualified electrical engineer or otherwise.

21. Hearing, eye and hand protection should be worn (PPE).

Specific safety instructions

- Dispose of plastic bags safely - they are a suffocation hazard for young children.
- Keep the area you are working in clean and tidy.
- If you are using a means of support to raise yourself off the ground, ensure that it is stable and cannot topple over - do not overreach at any time.
- Do not use power tools in the rain or wet environments.
- Do not use power tools where there is a risk of fire or explosion - i.e. near flammable liquids or gases.
- Do not allow children into the area where you are working.
- Do not let children or other people touch power tools.
- Do not leave the power tool unattended.
- Store in a dry place well out of reach of children.
- Always use safety glasses and gloves. We also recommend the use of ear protectors.
- Wear the right clothes - not loose fitting or jewellery and ensure garments cannot come into contact with moving parts.
- If you have long hair, tie it back safely to avoid tangling it in moving parts.
- Before using any power tool, check first for damaged parts and if found do not use it before the part or parts have been replaced with new ones.
- Do not use power tools when you are tired or have been drinking alcohol.
- Do not force the appliance - let it work at the rate for which it was intended.

CE DECLARATION OF CONFORMITY (GB)

We declare under our sole responsibility that

GHT-620

is in conformity with the following standards or standardized documents:

EN60745-1, prEN7-745-2-15, EN55014-1, EN55014-2, EN61000-3-2, EN61000-3-3

in accordance with regulations:

98/37/EC, 73/23/EEC, 89/336/EEC, 2002/95/EC, 2002/96/EC

from 01-01-2007

ZWOLLE NL



J.A. Bakker - van Ingen
CEO Ferm BV



J. Lodewijk
Quality Manager Ferm Global

It is our policy to continuously improve our products and we therefore reserve the right to change the product specification without prior notice.

Ferm BV • Lingenstraat 6 • 8028 PM Zwolle • The Netherlands

• Machine fails to operate	• Power turned off • Mains socket faulty • Extension cable damaged • Fuse faulty/blown	• Turn power on • Use another socket • Inspect cable, replace if damaged • Replace fuse
• Machine overheats	• Air vents blocked	• Unblock air vents
• Machine functions intermittently	• Extension cable damaged • Machines internal wiring damaged	• Inspect cable, replace if damaged • Contact service centre
• Machine does not cut	• Cutting objects too thick • Blades worn	• See specification table for maximum cutting thickness • Get blades replaced or sharpened

Cleaning

Regularly clean the machine housing with a soft cloth, preferably after each use. Keep the ventilation slots free from dust and dirt. If the dirt does not come off use a soft cloth moistened with soapy water. Never use solvents such as petrol, alcohol, ammonia water, etc. These solvents may damage the plastic parts.

Lubrication

The machine requires no additional lubrication.

Faults

Should a fault occur, e.g. after wear of a part, please contact the service address on the warranty card. In the back of this manual you find an exploded view showing the parts that can be ordered.

Environment

To prevent damage during transport, the appliance is delivered in a solid packaging which consists largely of reusable material. Therefore please make use of options for recycling the packaging.



Faulty and/or discarded electrical or electronic apparatus have to be collected at the appropriate recycling locations.

Warranty

For the conditions of warranty, please refer to the separately provided warranty card.

- Do not overreach while working - you may lose your balance.
- Never use this appliance without the blade guard fitted. It must always remain fitted.
- Only use spare parts and attachments supplied by Ferm. Use of attachments other than those supplied or recommended by Ferm will invalidate your guarantee and could be dangerous.
- Only use this appliance for its intended purpose - trimming hedges and bushes.
- We strongly recommend the use of an RCD (Residual Current Device) of not more than 30 mA, at the plug socket when using this appliance.
- Only use spare parts and attachments supplied by Ferm. Use of attachments other than those supplied or recommended by Ferm will invalidate your guarantee and could be dangerous.
- Do not allow the power cord to lay on or across sharp objects that might pierce the outer insulation. Carry out a visual inspection of the power cord before use and if it is damaged, have it replaced by a specialist service centre. Do not use the appliance if the cord is damaged.



Above all be careful!

Specific safety warnings



Danger!

- The cutting elements continue to move after the motor is switch off.
- If the cord becomes damaged during use, disconnect the cord from the power supply immediately. DO NOT TOUCH THE CORD BEFORE DISCONNECTING THE SUPPLY. Do not use the appliance if the appliance cord or the extension cord are damaged.
- Keep extension cord away from cutting elements.
- Always ensure the guards are fitted when using the tool.
- Check the cable for damage before starting work and replace if necessary.
- Inspect and maintain the trimmer regularly. Have the trimmer repaired only by an authorised repairer.
- Keep your hands and feet away from the cutting area at all times.
- Always hold the trimmer at a safe distance from the body.
- Always wear protective goggles.
- Always wear gloves.
- Only use the trimmer in daylight.
- Ensure the ventilation openings are clear of debris at all times.
- Ensure there are no people or animals within 5 metres of your trimming area.
- Remove the plug from the power socket before attempting any maintenance.
- After use the tool should be stored so that the blade is not exposed.

Electrical safety



Always check that the mains voltage is the same as on the type plate of the machine.



The machine is double insulated; therefore, no earth connection is required.

Replacement of power cords or plugs

Immediately dispose of old cords and plugs once they have been replaced. It is dangerous to plug a loose power cord into a mains power socket.

Use of extension leads

Only ever use approved extension leads that are suitable for the power rating of the machine. The minimum core thickness is 0.75 mm². Whenever using a reel extension lead, always fully unroll the lead.

3. OPERATION

Safety features

- The fixed blade teeth have extended points with rounded ends to reduce the chance of injury in case of accidental contact.
- The fixed blade is longer than the moving blade to guard against kickback should you inadvertently make contact with a wall or fence.
- The rear handle trigger switch (2) and front handle bar switch (6) must be operated together to start the motor. This ensures that both hands are used to control the trimmer.
- If either of the two switches is released, the tool is designed to stop rapidly

Using the cord grip

To help secure the plug to the extension cord, make a loop in the extension cord and attach it to the cord grip as shown (see Fig. 2). Once secure, attach the cord to the plug. This will prevent accidental 'pull-out'.

Using your hedge trimmer

For your own safety and for best results read the following user advice and do not use this product for anything other than its intended purpose.

Switching On and Off

Fig.1

- To switch the trimmer on, press the safety switch (6) and the start switch (2) at the same time.
- To switch off, release one or both switches.

Note: If you notice a slight burning smell, it is nothing to worry about. It is the electric brake working.

Rotating the handle

Fig. 1

The handle can be rotated in 90° steps to the machine housing. This allows you to place the On/Off switch in a more comfortable handling position for particular working conditions; e.g. for cutting work or for left-handers.

- Pull the knob (8) backwards using your thumb.
- Rotate the handle to the new position (until it jams)

Trimming a hedge - best method

Ideally a hedge should be wider at the bottom than the top. This will improve light penetration, keeping the hedge healthy. If possible, trim both sides of the hedge. When trimming the sides of the hedge, trim from the bottom upwards. This will ensure there are no hedge trimmings obscuring or interfering with your cut strokes. The blade should not be forced to cut too deep. Cut lightly through the surface of the hedge. When trimming the top of the hedge, trim away from you but do not over-reach. It is much wiser and safer to move along and cut within your reach remaining on two feet at all times.



Do not let the blade come into contact with wire meshing or fencing material. It could damage the material and your trimmer.

4. MAINTENANCE



Make sure that the machine is not live when carrying out maintenance work on the motor.

The machines have been designed to operate over a long period of time with a minimum of maintenance. Continuous satisfactory operation depends upon proper machine care and regular cleaning.

Trouble shooting

The following table gives checks and actions that you can perform if your machine does not operate correctly. If this don't identify/remedy the problem, contact your service centre.