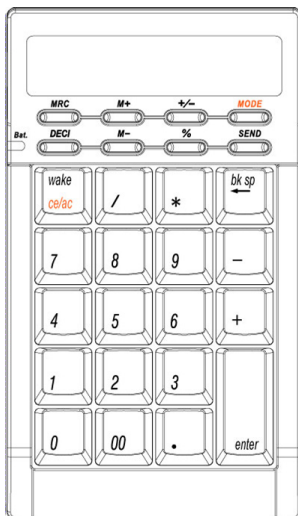




User's Manual

Bluetooth Calculator Keypad



SMK-LINK

INTERLINK
ELECTRONICS





Regulatory Compliance

This device complies with Part 15 of the FCC Rules.

Operation is subject to the following two conditions:

- (1) This device may not cause harmful interference, and
- (2) This device must accept any interference received, including interference that may cause undesired operation.

FCC Certification

This equipment has been tested and found to comply with the limits for a Class B digital device, pursuant to Part 15 of the FCC rules. These limits are designed to provide reasonable protection against harmful interference when the equipment is operated in a residential installation. This equipment generates, uses and can radiate radio frequency energy and, if not installed and used in accordance with the instructions, may cause harmful interference to radio communications. However, there is no guarantee that interference will not occur in a particular installation. If this equipment does cause harmful interference to radio or television reception, which can be determined by turning the equipment off and on, the user is encouraged to try to correct the interference by one or more of the following measures:

- Reorient or relocate the receiving antenna.
- Increase the separation between the equipment and receiver.



•
No
ap
vc
Ex
m
lir

U
Th
nu
sp

D
He
th:
re
19

©



- Consult the dealer or an experienced radio/TV technician for help.

d Notice: Any changes or modifications not expressly approved by the party responsible for compliance could void the user's authority to operate the equipment. Extension cables are not recommended, if used, they must be shielded in order to comply with the emission limits.

IC Certification

The term "IC" before the certification/registration number only signifies that the Industry Canada technical specifications were met.



Declaration of conformity

Hereby, SMK-Link Electronics Corporation declares that this product is in compliance with the essential requirements and other relevant provisions of Directive 1999/5/EC.

[f
)

d

d

© 2008 SMK-LINK Electronics, Inc.





System Requirements

- Hardware: Bluetooth-enabled computer (with either built-in Bluetooth capability or external Bluetooth dongle)
- Operating System: US-version Windows 2000, XP or Vista, US-version Mac OS X or later
- Exception: Please note that this keypad supports US-version OS with QWERTY keyboard layout; it may not function properly under other international OS with AZERTY keyboard layout

On/Off

Package Contents

- Bluetooth calculator keypad
- 2 x AAA batteries
- User's manual



Installing Batteries (Supplied)

- Remove the battery cover from the bottom of the keypad by releasing the latch and slide off the cover. To release the latch ②, push it toward the top of the keypad and gently lift the cover up and pull it away from the cover lock ①.
- Insert the two supplied AAA batteries (included in the package) to the battery slots. Make sure the positive (+) and negative (-) ends of the batteries match the polarity markings inside the battery compartment.

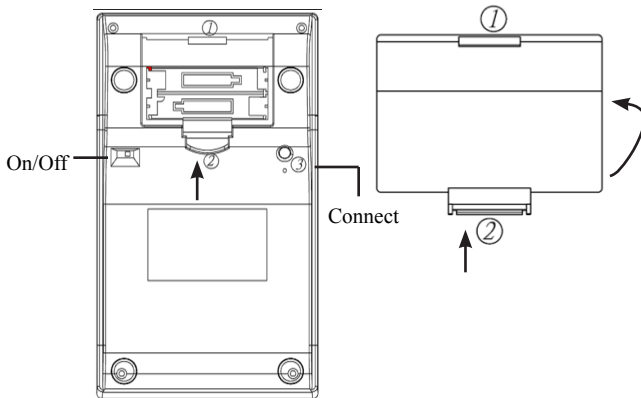




er


o

t
al



- Snap the battery cover back into position.
- Before connecting the keypad with your Bluetooth computer you must turn the keypad power on by sliding the on/off switch located at the bottom of the keypad to the **ON** position.

op
it



Do not mix new and used batteries in the keypad. Always replace with 2 batteries of the same type from the same manufacturer.





Connecting with Your Bluetooth Computer

Before you can use Bluetooth devices for the first time you must connect your devices through a standard discovery and pairing process.

The Interlink Bluetooth Calculator Keypad is designed to work with Bluetooth-enabled systems. Please review the documentations that come with your computer system for any specifics regarding your Bluetooth system and/or consult with your system vendor if you cannot find the Bluetooth connectivity in your system.

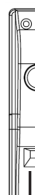
3.

4.

Important: During the process of connecting your Bluetooth keypad to your Bluetooth computer, you must set the keypad at **Keypad Mode** by tapping on the **MODE** key until the word **Keypad** appears on the LCD display.



Note: The keypad is default to Keypad Mode when you turn the power on. If you have switched the mode to Calculator Mode you must perform the mode switch function to bring it back to Keypad Mode before connecting to your Bluetooth computer.



On/O

Widcomm Bluetooth Software

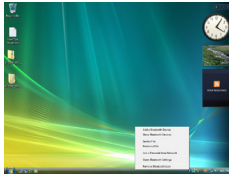
1. Make sure your computer's Bluetooth radio is turned on.
2. Make sure your keypad is on **Keypad Mode**.

5.





er



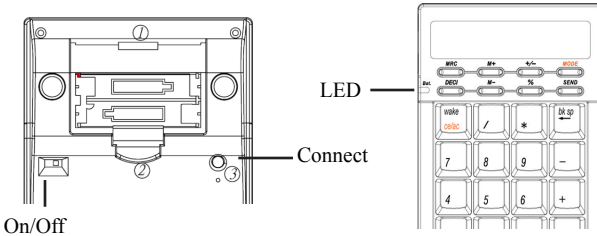
to
he
or

3. **Right click** the Bluetooth icon located on your Desktop or the System Tray, select **Add a Bluetooth Device**.
4. At this point, the keypad must be placed in discovery mode. First make sure the keypad is turned on (check the on/off switch located at the bottom of the keypad) then press the **Connect** button ③ also located at the bottom of the keypad. The LED light on the top of the keypad will flash, indicating the keypad is in discovery mode ready to be connected to the computer.

e
D



i



5. Check **My device is set up and ready to be found** and click **Next**. This must be performed within 20



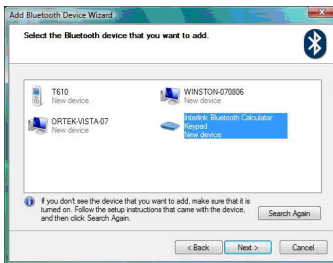


seconds to avoid expiration of the discovery signal.



8.

6. **The Interlink Bluetooth Calculator Keypad** will be discovered and listed on the screen. Highlight the name of the device and click **Next**.

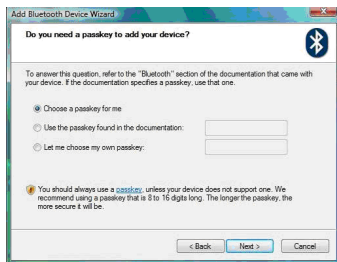


7. The Bluetooth Wizard will ask you for a passkey. Select **Choose a passkey for me** and click **Next**.



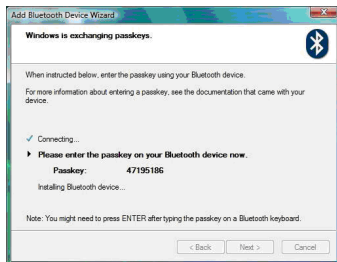


1.



8. The Wizard will provide you with a passkey. Use your Bluetooth keypad to enter the numbers displayed on the screen, followed by pressing the “enter” key on your keypad. Note: please do not use your keyboard to enter the passkey although the Wizard calls the keypad a keyboard. You must type the numbers using the Bluetooth keypad you are connecting with. When this is done, click **Next**.

1






9. Click **Finish** on the Wizard to complete the process.

4.



10. The **Found New Hardware** Wizard appears and the OS will install the driver automatically. No other steps are necessary.

5.

11. The Bluetooth icon will turn to green.  Your Bluetooth Calculator Keypad is ready to use.

Macintosh Bluetooth Software

1. Make sure your computer's Bluetooth radio is turned on.
2. Make sure your keypad is on **Keypad Mode**.
3. Click the Bluetooth icon located on your desktop or in the system bar.

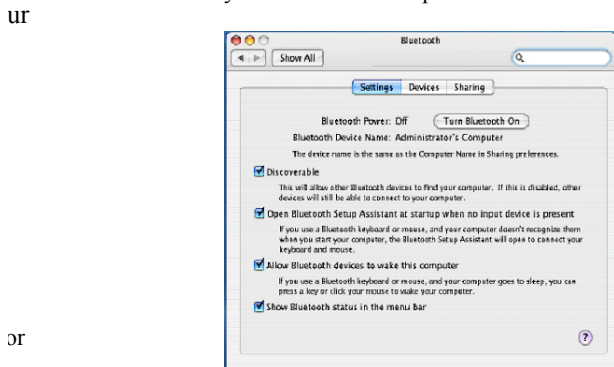




- ss. 4. Or, click the Apple icon and click **System Preferences**, then click on the Bluetooth icon.



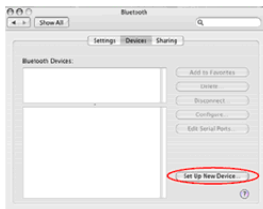
- he 5. Select **Turn Bluetooth On** to enable Bluetooth for your Macintosh computer if it's not already on.





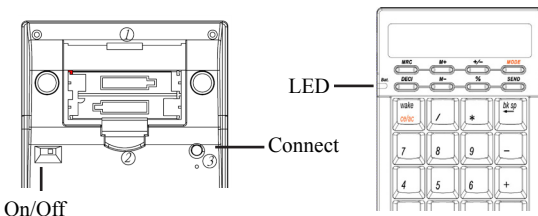
6. Select **Set Up New Device**. Bluetooth Setup Assistant screen will show up. Click **Continue**.

8.



7. At this point, the keypad must be placed in discovery mode. First make sure the keypad is turned on (check the on/off switch located on the bottom of the keypad) then press the **Connect** button ③ also located on the bottom of the keypad. The LED light on the top of the keypad will flash, indicating the keypad is in discovery mode ready to be connected to the computer.

9.



10





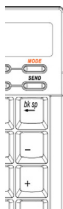
8. The screen will ask you for the device type. Select **Keyboard** from the device list and click **Continue**. Please note that Bluetooth recognizes the keypad as a keyboard therefore it's referred to as "keyboard" during the setup process.

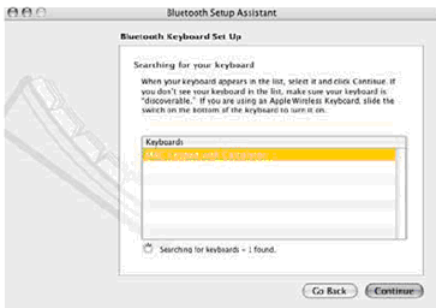


i.

to

9. The computer will search for Bluetooth devices in the range (within 33 feet or 10 meters) and list each device on the screen.
10. Select **Interlink Bluetooth Calculator Keypad** and click **Continue**.





12
se
su

11. The Wizard will provide you with a passkey. Use your Bluetooth keypad to enter the numbers displayed on the screen, followed by pressing the enter key on your keypad. Note: please do not use your keyboard to enter the passkey. You must type the numbers using the Bluetooth keypad you are connecting with. When this is done click **Continue**.





12. On the Conclusion screen, click **Quit** to exit setup. Your Bluetooth Calculator Keypad is successfully installed.

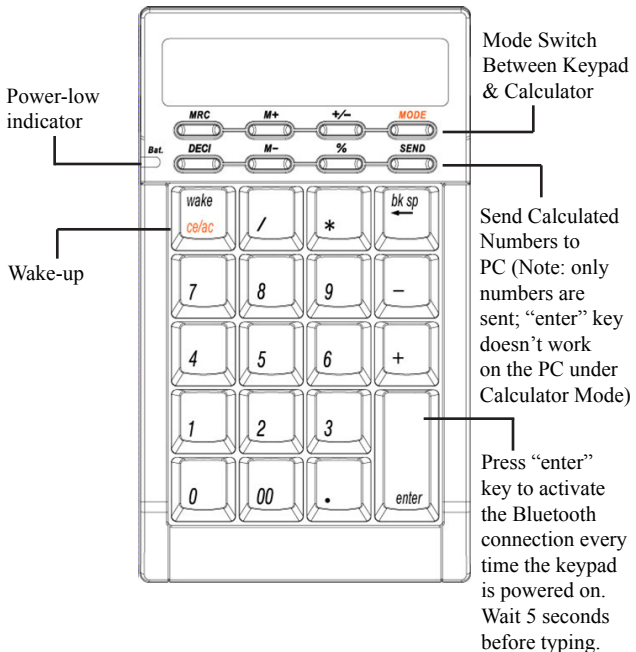


e

ie.



Using the Bluetooth Calculator Keypad



Power On/Off Switch

- To power on, or turn off, the keypad, use the on/off switch located at the bottom of the keypad. This





feature is normally used when you need to transport the keypad. By turning off the keypad you can prevent power loss during travel. Remember to power on when you are ready to use the keypad.

with
n Keypad
ulator

Activate Bluetooth Connection

- When the keypad power is turned off, it sends the Bluetooth to inactive mode. To reactivate the Bluetooth connection after power on the keypad, press the enter key once, wait about 5 seconds, before typing on the keypad. This step is necessary every time you turn on the keypad. This is the nature of Bluetooth

culated
s to
e: only

s are
iter”
work
C under
or Mode)

Power-Saving and Wake Feature

- The keypad is designed with a power-saving feature which goes into sleep mode with the LCD display shutting off after approximately 4 minutes of inactivity. To wake up the keypad from sleep mode, press the **wake** key. Note: You don't need to reactivate Bluetooth connection (see Activate Bluetooth Connection above) after waking up they keypad as Bluetooth connection remains activated during sleep mode.

nter”
ctivate
tooth
ion every
keypad
red on.
econds
yping.

ff

Power-low Indicator

- The red LED light flashes when battery power is low. Please replace both batteries at your earliest convenience to prevent power interruption.





Mode Switch Between Calculator and Keypad

- To switch between calculator and keypad modes, press the **MODE** key. The mode you are in is indicated on the LCD display.

Sending Calculated Result to Your Computer

- When the keypad is in calculator mode, you can send the calculated result to the cursor location on your computer's active document by pressing the **SEND** key. Please note that only numbers will be sent to the computer, the **SEND** key does not transfer signal from the keypad's **enter** key. In order to finish the number transfer you must use the **Enter** key on your keyboard to finish it. Or, you can switch your keypad to "Keypad" mode by pressing the **MODE** key once, then press the **enter** key to finish the number transfer. Remember to switch back to calculator mode by pressing the **MODE** key again if so desired.



Function Key Definitions

Function Keys for Calculator Mode Only:

<i>Function Key</i>	<i>Function Definition</i>
M+	Adds the displayed value to the number stored in the memory
M-	Subtracts the displayed value from the number stored in the memory





<i>Function Key</i>	<i>Function Definition</i>
MRC	Pressing once transfers the number in the memory onto the LCD display. Pressing again clears the value stored in the memory.
DECI	Specifies the number of decimal places in rounding
+/-	Changes signs for the displayed value between positive (+) and (-)
%	Converts number into percentage when combined with arithmetic operator
MODE	Switches as a toggle key between calculator and keypad modes
SEND	Sends the calculated result as displayed on the LCD to where the cursor rests on your computer's active page. Note that it does not activate ENTER key when using SEND to transfer numbers to your computer
ce/ac	To clear the numeric entry



3R





LCD Display Status Indicators:

<i>Display</i>	<i>Definition</i>
- MINUS	Negative value indicator
MEM	Memory calculator functions (M+, M-, MRC) are engaged
ERR	Error indicator
' (apostrophe)	3-digit separator
CALC	Calculator mode and calculator functions are engaged
KEYPAD	Keypad mode is engaged, values will be shown on your computer and will not be displayed on the LCD
GT	Grand total

D
A



Rounding and Decimal Place Selectors:

<i>Display</i>	<i>Definition</i>
F	Floating decimal point system, displays the number as entered without rounding
0, 2, 4	Setting the position of decimal point and activates the 5/4 rounding mechanism

0
.
.
.





<i>Display</i>	<i>Definition</i>
A	<p>Auto mode automatically adds a decimal point and 2 decimal places to all values entered. Examples:</p> <ul style="list-style-type: none">•Enter “1” resulting in “0.01”•Enter “10” resulting in “0.10”•Enter “100” resulting in “1.00”•Enter “1000” resulting in “10.00”•Enter “1.1” resulting in “1.10”•Enter “1.499” resulting in “1.50” <p>The auto mode is most useful when entering a string of currencies that requires 2 decimal places. Note that the auto mode only works with addition and subtraction operators. Example:</p> <ul style="list-style-type: none">•Enter “1+2” resulting in “0.03”•Enter “60*20” resulting in “1,200.00”, not “0.12”

Operating Tips & Trouble Shooting

- Make sure the keypad is turned on by checking the on/off switch located at the bottom of the mouse before using it.
- Remember to press “enter” key once, wait about 5 seconds, to reactivate the Bluetooth connection after turning on the power switch
- Conserve the battery power by switching the on/off switch to **OFF** position when traveling or if the keypad will not be in use for awhile. If you will not





use the keypad for a long period of time remove the batteries from the battery compartment.

- During operation the keypad will go into sleep mode after 4 minutes of inactivity to save battery power. Click on **wake** key to wake it up.
- When the keypad behaves erratically check the power-low indicator LED for battery power status, i.e. red LED light flashing means power is low, and follow the instructions in **Installing Batteries** section to replace the batteries.
- The keypad stays connected to your Bluetooth-enabled computer even when it's turned off and out of range once it's set up. If for any reason the connection to the system is lost it can be fixed by following the instructions in the **Connecting with Your Bluetooth Computer** section to reconnect the devices.
- If the connection is frequently lost under normal operation, contact your system vendor's technical support or check for Bluetooth software update on your system vendor's website.



Warranty: SMK-LINK Electronics warrants to the original end-user purchaser of the Product ("you") that the Product, excluding batteries, will be free from defects in materials or workmanship under normal use and service for one-year from date of purchase. Dated invoice or sales receipt is necessary to accompany the Product returned for warranty service consideration. Any Product repaired or replaced under the terms of the warranty is covered for the remainder of the original warranty period or ninety (90) days from the date of



ser
bec
wa
eitl
mc
wa
to
abl
wh
ren
ite
any
bas
stri
are
ina
cap
cla
SV
cat
the
prc
suc
mu
rec
on
su
sta
fro
yo
be
su
coi
ma



service or return shipping, whichever is longer. If the Product becomes defective in materials or workmanship during the warranty period, SMK-LINK Electronics will, at its option, either repair or replace it with a more current or upgraded model if the originally purchased model is not available. This warranty does not cover products which have been subjected to misuse, accident, physical damage, improper installation, abnormal operation or handling, neglect, inundation or fire, or when product regulatory label has been removed, altered or rendered illegible; nor does it cover accessory and consumable items. In no case shall SMK-LINK Electronics be liable for any indirect special, incidental, or consequential damages based upon breach of warranty, breach of contract, negligence, strict tort or any other legal theory. Such damages include, but are not limited to, loss of profits, loss of savings or revenues, inability to use the product or any associated equipment, cost of capital, cost of any substitute equipment, facilities or services, claims by third parties other than you, and injury to property. SMK-LINK Electronics's total liability for damages for any cause related to, or arising out of, the use or inability to use the product, shall not exceed the original price paid for the product even if SMK-LINK Electronics has been informed of such possibility. If your Product requires warranty service, you must first contact SMK-LINK Electronics Product Support to receive an RMA Number. The contact information can be found on SMK-LINK Electronics website: <http://www.smklink.com/support/contactsupport.html>. This warranty does not affect your statutory right and you may also have other rights which vary from state to state. Unless modified in writing, signed by both you and SMK-LINK Electronics, this warranty is understood to be the complete and exclusive agreement between the parties, superseding all prior agreements, oral or written, and all other communications between the parties relating to the subject matter of this warranty.





Product Support

For technical support please contact SMK-LINK Electronics at <http://www.smklink.com/support>

All trademarks and registered trademarks mentioned in this document are the property of their respective owners.

Features and specifications are subject to change without notice.



Thank You

Thank you for purchasing the Bluetooth Calculator Keypad. We know you had other choices and we appreciate that you chose Interlink Electronics Bluetooth Calculator Keypad by SMK-LINK for your product needs. So that we may better serve you in the future, please register online at www.smklink.com/register.

