



CHARTPLOTTERS



GPSMAP® 8000



GPSMAP® 8500



Glass Helm Chartplotters

Enjoy a fully integrated glass helm with 8", 12" or 15" multi-touch displays. Integrate sonars, including GSD 26 Professional sonar module with CHIRP, GSD 25 Premium Sonar Module with CHIRP DownVü™ and SideVü™ scanning sonar or GCV™ 10 with CHIRP DownVü and SideVü scanning sonar. Also integrates autopilot, connectivity, apps, engine data, weather, video and multi-media. Digital switching system puts full control at your fingertips, either at

the helm, or when using a remote key fob, or an app on a tablet. SmartMode™ control allows you to quickly change all screens at a helm in sync to a custom preset mode with a single touch. 10Hz GPS/GLONASS receiver updates position and heading 10 times per second. Low-profile flush mount or custom flat mount for a sleek glass helm. Bail mount also available for 8" and 12" models.

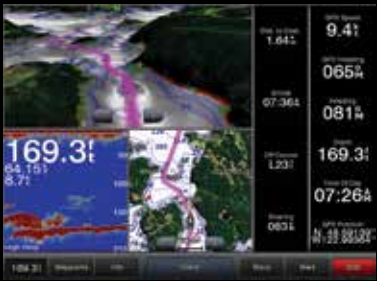


Modular Glass Helm Chartplotter

Our "black box" option allows a fully integrated glass helm with large 15", 17" or 19" multi-touch monitor displays. Install in a low-profile flush mount or custom flat mount for a sleek glass helm. Integrates sonars, including GSD 26 Professional sonar module with CHIRP, GSD 25 Premium Sonar Module with CHIRP DownVü™ and SideVü™ scanning sonar or GCV™ 10 with CHIRP DownVü and SideVü scanning sonar. Also integrates autopilot, connectivity, apps, engine data, weather, video and multi-media. Digital switching

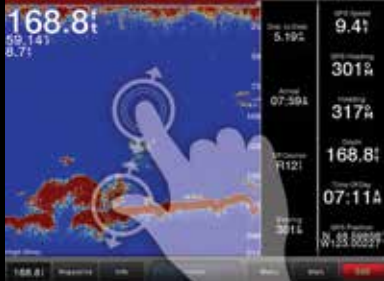
system puts full control at your fingertips, either at the helm, or when using a remote key fob, or an app on a tablet. SmartMode™ control allows you to quickly change all screens at a helm in sync to a custom preset mode with a single touch. Pair with GPS 19x external 10Hz GPS/GLONASS receiver to update position and heading 10 times per second. Add optional mapping with Garmin Card Reader sold separately.





Simple menu bar

Clear, simple touchscreen menu for easy operator use.



Multi-touch

Touchscreens capable of performing pinch-to-zoom and other multi-touch commands.



MarinerEye 3-D

General chart with satellite images, high-resolution 3-D graphics and Auto Guidance¹.



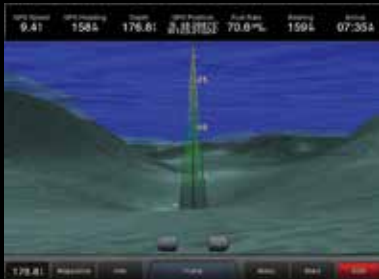
Auto Guidance

Auto Guidance for fast, simple and reliable navigation¹.



Integrated Autopilot

Easily access your autopilot control from any display.



FishEye 3-D

3-D perspective below the waterline, showing depth and contours based on bathymetric chart data.¹

SERIES FEATURES >>>

- GPSMAP 8000 series fully integrated chartplotters available with 8", 12" and 15" multi-touch displays
- GPSMAP 8500 series black box solution compatible with 15", 17" and 19" Garmin multi-touch marine monitors (sold separately)
- Low profile flush mount or sleek flat mount for a glass helm look
- Pinch-to-zoom your map, radar and sonar screens with multi-touch
- SmartMode™ control changes multiple displays simultaneously

- Digital switching puts full control at your fingertips
- Integrates various sonar technologies, integrated autopilot, connectivity, apps, engine data, weather, multimedia, and more
- Customize layouts, data and gauges
- GPSMAP 8530 includes Worldwide BlueChart® g2 maps
- GPSMAP 8000 series includes external 10Hz GPS/GLONASS receiver that updates position and heading 10 times per second

- GPSMAP 8500 series black box can be paired with external GPS 19x 10Hz GPS/GLONASS receiver to update position and heading 10 times per second
- Compatible with BlueChart Mobile and Garmin Helm apps
- Add optional mapping to GPSMAP 8500 series with Garmin Card Reader (sold separately)
- View and control multiple IP cameras simultaneously, split screen, on your compatible Garmin chartplotter via the Garmin Marine Network

10Hz GPS

g2

MODEL	CHARTS	PART NUMBER	PRICE
GPSMAP 8530	World Wide BlueChart® g2	010-01019-02	\$6,499.99
GMM 190	N/A	010-01022-00	\$10,999.99
GMM 170	N/A	010-01021-00	\$8,999.99
GMM 150	N/A	010-01020-00	\$7,499.99
GPSMAP 8215	Coastal U.S. BlueChart® g2	010-01018-01	\$6,999.99
GPSMAP 8212	Coastal U.S. BlueChart® g2	010-01017-01	\$4,999.99
GPSMAP 8208	Coastal U.S. BlueChart® g2	010-01016-01	\$4,199.99

Accessories for 8000/8500

(sold separately)



Garmin Remote Input Device (GRID)

A remote keypad that provides full control of all GPSMAP 8000/8500 series units. Rotary knob, joystick and (+)(-) button controls provide navigation through menus and screens. Allows you to seamlessly navigate between monitors at a station. Control single or multiple monitors with one keypad. Supports multiple keypads per station. Small footprint can be integrated into a captain's chair.

FEATURES >>>

- Optional keypad for full control of all 8000/8500 series
- Rotary knob and joystick for quick menu and screen navigation
- Seamlessly navigate between monitors of a station
- Control single or multiple monitors with one keypad
- Supports multiple keypads per station
- Small size for captain's chair integration
- Installs horizontally or vertically

GRID Part no: 010-01024-00
MSRP: \$399.99



Garmin Card Reader

Provides convenient remote mounting and a single access point for two SD® card slots for mapping. You can add multiple card readers for additional access points. Waterproof magnetic door allows card reader to be mounted horizontally or vertically.

FEATURES >>>

- Convenient remote mounting for two mapping SD® cards
- Separate from system to allow remote mounting and single access point
- Two SD card slots
- Add multiple card readers for additional access points
- Waterproof magnetic door allows horizontal or vertical mounting

Garmin Card Reader Part no: 010-01023-00
MSRP: \$199.99



Garmin Wi-Fi Adapter Kit

Provides a dedicated Wi-Fi connection between a compatible chartplotter and applicable Garmin apps downloaded to mobile digital devices. Compatible with existing 8000/8500 models to connect to BlueChart Mobile and Garmin Helm apps.

Wi-Fi Adapter Kit 010-11981-20
MSRP: \$249.99



GPSMAP[®] 7400/7600 Series

new



Fully networked, fully integrated chartplotters

The GPSMAP 7400/7600 chartplotter series is designed for cruisers, sailors and sailing racers who demand high performance, ease of operation, and feature integration. Available with 7", 8", 10", 12" or 16" multi-touch widescreen displays with an internal 10 Hz GPS that updates position and heading 10 times per second. Fully network capable including Garmin Marine Network and NMEA 2000 for components such as radar, autopilot, instruments, multiple screens, FUSION-Link™, sensors, black box sonar, digital switching, thermal cameras, IP cameras, weather, GRID and more. This series also offers an SOS safety feature, an onboard PDF user manual and the conveniences of built-in Wi-Fi® connectivity. You can also import and export waypoints and routes via GPX.



Special Sailing Features

The beautiful Garmin GPSMAP series of chartplotters is available with wide 7, 8, 10, 12 and 16" touchscreens. They are fully networkable, have a 10Hz GPS, and are available with preloaded maps including both BlueChart g2 for the coastal US and Bahamas. A new pre-race guidance page shows your virtual starting line on the chart, along with data fields showing laylines, time to burn before the start, and a race timer that can be synchronized across all your networked Garmin GPS products. The new GPSMAP series is designed for serious sailors who demand high performance, ease of operation, and complete feature integration. Special sailing features include laylines, enhanced wind rose, heading and course-over-ground lines, true wind data fields and tide/current/time slider. Gauge displays provide key information at a glance.



Network Sharing

Network sharing allows you to share features with other compatible GPSMAP units, such as supplemental maps and user data, including waypoints, routes and tracks. Data entered into one chartplotter can be automatically synced with other chartplotters in a network.



SERIES FEATURES >>>



- 7", 8", 10", 12" or 16" multi-touch widescreen displays
- 7600 series includes both BlueChart g2 and LakeVü HD preloaded
- Sailing features that include laylines, enhanced wind rose, heading and course-over-ground lines, true wind data fields, and tide/current/time slider
- Racing features include pre-race guidance, synchronized race timer, virtual starting line, time to burn, and lay line data fields
- Compatible with gWind Transducers
- Internal 10 Hz GPS updates position and heading 10 times per second
- Fully network capable for Garmin Marine Network and NMEA 2000. Supports NMEA 0183
- Supports xHD dome and xHD2 open array radars, Reactor™ autopilot, instruments, multiple screens, FUSION-Link™, sensors, black box sonar, digital switching, thermal cameras, IP cameras, weather, GRID and more
- Gesture based control for FLIR® and Axis cameras
- Built-in Wi-Fi® / ANT for use with Garmin Helm™, BlueChart® Mobile and wireless remote control
- Import and export waypoints and routes via GPX
- SOS safety feature
- Video input - 1 composite video (7" & 8"); 2 composite video (10") Add DVI-D video output (for 10" & 12")
- Ethernet ports - 2
- Media integration- Fusion-Link™
- 2 SD™ card slots makes it easy to add optional mapping (7" has 2 micro SD card slots)
- Supports optional BlueChart g2 Vision charts with exclusive Garmin Auto Guidance 2.0
- Supports User Data Sharing, allows import and export waypoints and routes via GPX
- On board PDF user manual
- Suitable for use in fresh or saltwater
- View and control multiple IP cameras simultaneously, split screen, on your compatible Garmin chartplotter via the Garmin Marine Network

MODEL	CHARTS	PART NUMBER	PRICE
GPSMAP 7607	Preloaded BlueChart® g2 & LakeVü HD	010-01379-01	\$1499.99
GPSMAP 7608	Preloaded BlueChart® g2 & LakeVü HD	010-01305-01	\$1999.99
GPSMAP 7610	Preloaded BlueChart® g2 & LakeVü HD	010-01306-01	\$2499.99
GPSMAP 7612	Preloaded BlueChart® g2 & LakeVü HD	010-01307-01	\$3499.99
GPSMAP 7616	Preloaded BlueChart® g2 & LakeVü HD	010-01402-01	\$5499.99

Accessories for 7400/7600 Series

(sold separately)



Garmin Remote Input Device (GRID)

A remote keypad that provides full control of all GPSMAP 8000/8500 series units. Rotary knob, joystick and (+)(-) button controls provide navigation through menus and screens. Allows you to seamlessly navigate between monitors at a station. Control single or multiple monitors with one keypad. Supports multiple keypads per station. Small footprint can be integrated into a captain's chair.



UNIT FEATURES >>>

- Optional keypad for full control of all 8000/8500 series
- Rotary knob and joystick for quick menu and screen navigation
- Seamlessly navigate between monitors of a station
- Control single or multiple monitors with one keypad
- Supports multiple keypads per station
- Small size for captain's chair integration
- Installs horizontally or vertically

GRID Part no: 010-01024-00
MSRP: \$399.99



Compatible with gWind Transducers

Garmin gWind, gWind Wireless and gWind Race transducers feature twin-fin technology with 3-bladed propeller. Connect to the NMEA 2000 and compatible Garmin chartplotters via the GND 10 black box bridge.



UNIT FEATURES >>>

- Three-bladed propeller for more accurate True Wind Speed (TWS) in lighter air
- Twin-fin design gives a more stable True Wind Angle (TWA)
- Optic reading technique makes this transducer superior at low wind speeds and provides for excellent linearity
- GND™ 10 black box bridges NMEA 2000® data to Nexus Network and enables Garmin compatible chartplotters to work with Nexus sail equipment and vice versa
- Easy plug-and-play installation between Nexus, Garmin chartplotters, NMEA 2000 and USB networks

gWind
gWind + GND 10
Part no.: 010-01227-00
MSRP: \$599.99

gWind Wireless
gWind Wireless + WSI Box +
GND 10 Part no.: 010-01248-00
MSRP: \$699.99

gWind Race
gWind Race + GND 10
Part no.: 010-01228-00
MSRP: \$1,299.99



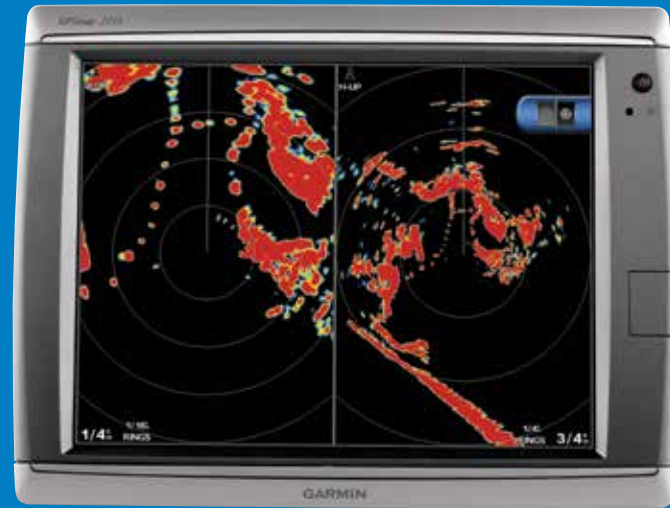
RF Wireless Remote

Wirelessly control your chartplotter with this black, portable keyed remote. Requires 2 AAA batteries (not included).



010-10878-10 MSRP: \$99.99

GPSMAP® 7000/7200 Series



GPSMAP® 6000/6200 Series



A touchscreen power pack

The touchscreen GPSMAP 7000 series delivers fast and smooth panning and zooming. That coupled with its powerful processor gives you fast refresh rates and map redraw from near real-time data. Models that include BlueChart® g2 maps offer with near fluid screen motion. Add optional BlueChart® g2 Vision™ marine charts (sold separately) and the results are even more outstanding. The GPSMAP 7000 series incorporates all the standard features that have made Garmin network plotters famous and are available

with your choice of 12" or 15" easy-to-navigate touchscreens. The GPSMAP 7000 series offers enhanced plug-and-play capability connecting to sensors and external instruments via the NMEA 2000® and Garmin Marine Network connections. This enables easy access and control of other compatible devices on board, from the radar, digital sonar and autopilot to engine data, VHF, AIS and video surveillance. With the Garmin Marine Network, your options are unlimited.

Power with pushbutton control

The GPSMAP 6000 series offers the same outstanding performance and exceptional processor as the GPSMAP 7000 series, but with pushbutton controls. Some models come preloaded with BlueChart® g2 maps and all are compatible with optional BlueChart® g2 Vision™ marine charts (sold separately). Available with either 8" or 12" high-resolution, multi-function displays that produce clear, sharp screen images. The GPSMAP 6000 series incorporates all the features that have given Garmin

network plotters a market-leading position. The GPSMAP 6000 series has enhanced plug-and-play capability for easy connection to multiple devices and instruments in your boat, allowing you to make optimal use of data from the chartplotter, radar, sonar, AIS and camera surveillance. The Garmin marine network offers unlimited options. Your on-board network can be as advanced as you need.

SERIES FEATURES >>>



- Choice of 15" and 12" displays with low profile design
- Convenient touchscreen control
- Video input for full-screen viewing
- Fast, smooth zooming and panning
- Garmin Marine Network, NMEA 0183 and NMEA 2000® compatibility with radar, sonar, instruments and other displays
- SD™ card slot for use with BlueChart® g2 or BlueChart® g2 Vision™
- Connect to the latest xHD and xHD2 radar technology for a crisp, clear image and to view chart and radar side-by-side
- Can be operated by wireless mouse and remote control (each sold separately)

GPSMAP 7215 Part no: 010-00748-01
MSRP: \$5,499.99

SERIES FEATURES >>>



- Choice of 12" and 8" display with low profile design
- Pushbutton keypad control
- Video input for full screen viewing on 15", 12" & 10"
- Fast, smooth zooming and panning
- Garmin Marine Network, NMEA 0183 and NMEA 2000® compatibility with radar, sonar, instruments and other displays
- Slot for SD card with BlueChart® g2 or BlueChart® g2 Vision™
- Connect to the latest xHD and xHD2 radar technology for a crisp, clear image and to view chart and radar side-by-side
- Can be operated by remote control (sold separately)

GPSMAP 6212 Part no: 010-00751-01
MSRP: \$2,999.99

GPSMAP® 741



7" touchscreen chartplotter with radar support

GPSMAP 741 is a workhorse chartplotter with a 7" pinch-to-zoom touchscreen, preloaded BlueChart® g2 US Coastal and LakeVü HD US Lakes maps that features over 17,000 U.S. lakes, of which 6,700 HD lakes have 1' contours shoreline to shoreline. Internal high-sensitivity 10Hz GPS/GLONASS receiver updates position and heading 10 times per second. Garmin Marine Network and NMEA 2000® support for autopilot capability, radar, engine data, SiriusXM weather, media integration, and more. Special supported sailing features include laylines, enhanced wind rose, heading and course-over-ground lines, and true wind data fields. Gauge displays are designed to provide

important need-to-know information at a glance, including true and apparent wind angle, set and drift, true or apparent wind speed, horizontal or vertical graphs, and a data bar with customizable data fields. Networking capabilities allow you to share features with other compatible GPSMAP units such as supplemental maps and user data such as waypoints, routes, and tracks. Built-in wireless connectivity allows you to connect to and access marine-specific apps via smartphone or tablet.

UNIT FEATURES >>>



- 7" WVGA color touchscreen with pinch to zoom
- Includes both BlueChart® g2 U.S. coastal and LakeVü™ HD U.S. inland maps
- Internal high-sensitivity 10Hz GPS/GLONASS updates position and heading 10 times per second
- Compatible with BlueChart g2 US Coastal, BlueChart® g2 Vision™ and LakeVü™ HD Ultra (sold separately)
- Supports optional external GPS for flexible mounting options
- Special sailing features and quick-reference gauge displays
- NMEA 2000® support for engine data, sensors, VHF, autopilot and more
- Wirelessly connect to iPhone® or iPad® with BlueChart® Mobile
- View and control chartplotter from a smartphone or tablet with Garmin Helm app
- 2 microSD® data card slots for optional map data
- Flat, flush and bail mounting options

GPSMAP 741 (without sonar)
Part no: 010-01102-00 MSRP: \$1,399.99

GPSMAP® 547



Compact 5" Chartplotter with BlueChart® g2 and LakeVü™ HD maps

An efficiently sized chartplotter with a high-visibility 5" VGA display comes preloaded BlueChart® g2 and LakeVü™ HD maps. Internal 10Hz GPS/GLONASS receiver updates position and heading 10 times per second. It is incredibly accurate for marking and navigating to any one of 5,000 user-created waypoints. Supported sailing features include laylines, enhanced wind rose, heading and course-over-


ground lines, true wind data fields and tide current slider. Built-in wireless connectivity allows you to connect to and access marine-specific apps via smartphone or tablet. Garmin Helm allows you to view and control your compatible Garmin chartplotter from an iPhone or iPad or phone or tablet using Android.

UNIT FEATURES >>>



- 5" VGA color display
- Includes both BlueChart® g2 U.S. coastal and LakeVü™ HD U.S. inland maps
- Internal high-sensitivity 10Hz GPS/GLONASS updates position and heading 10 times per second
- Compatible with BlueChart g2 US Coastal, BlueChart® g2 Vision™, LakeVü HD and LakeVü™ HD Ultra (sold separately)
- Supports optional external GPS for flexible mounting options
- Special sailing features and quick-reference gauge displays
- NMEA 2000® support for engine data, sensors, VHF, autopilot and more
- Wirelessly connect to iPhone® or iPad® with BlueChart® Mobile
- View and control chartplotter from a smartphone or tablet with Garmin Helm app
- 2 microSD® data card slots for optional map data
- Flat, flush and bail mounting options

GPSMAP 547 (no sonar) Part no: 010-01093-00
MSRP: \$749.99



SONAR MODULES



We have a sonar capability designed to satisfy nearly any use. It starts with our exclusive advanced HD-ID sonar that's built into all our fishfinders and combos. HD-ID sonar provides remarkable separation and definition of images for a clear view of what lies below. We also offer our family of ClearVü™ scanning sonar technologies, Garmin DownVü™ and SideVü™ scanning sonar, built-in to several new combos. These new sonar capabilities are available in our new echoMAP dv, echoMAP sv and GPSMAP xsv combos. In addition, our new GSD 25 premium sonar module provides true dual 1kW CHIRP and CHIRP DownVü and CHIRP SideVü scanning sonar to compatible chartplotters.

And finally, the pinnacle is our Garmin GSD 26 professional sonar module with CHIRP. Instead of using a single frequency like traditional sonar, CHIRP technology sweeps each pulse through a range of frequencies to deliver shallow-water-like target separation at extremely deep depths and at low frequencies. You can actually dial into specific frequencies to target certain species of sport fish. CHIRP sonar offers significantly better target definition, bottom contours and noise suppression at greater depths than traditional sonar, and a more timely interpretation of what's below for safer navigation and better fishing.

GSD 26



GSD 25

new



Professional Sonar Module with CHIRP

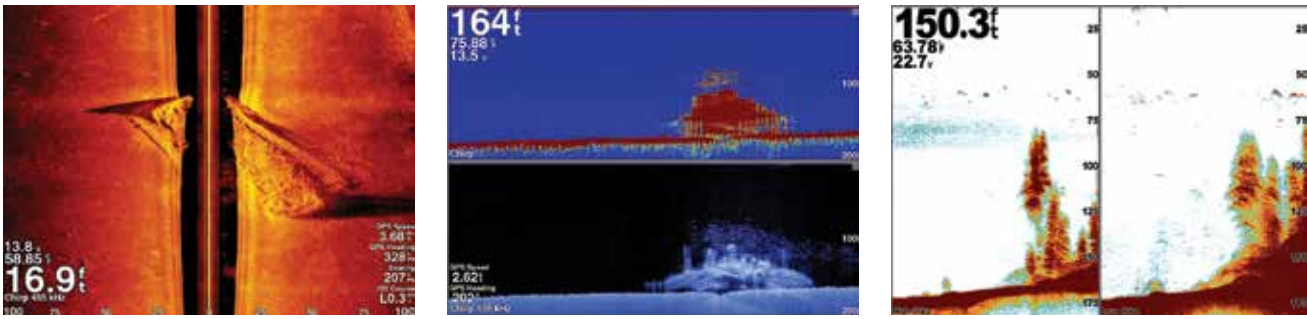
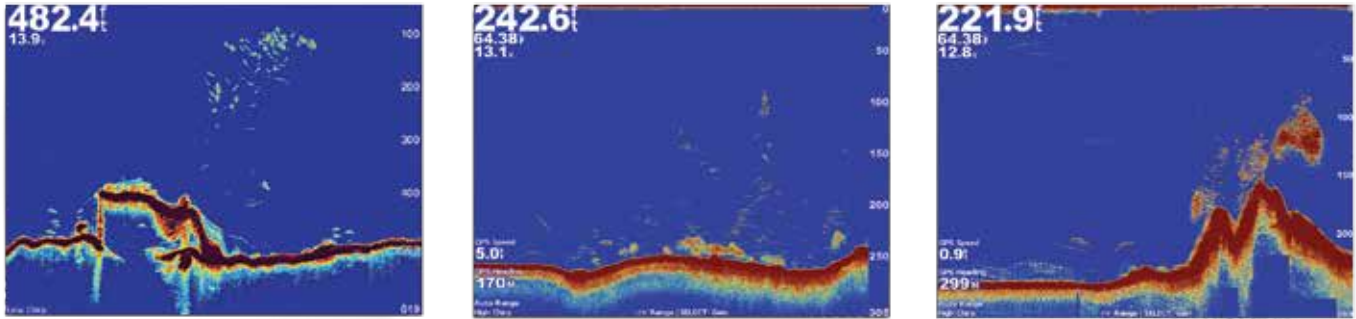
Get incredible clarity and detail from shallow to deep water with our GSD 26 digital sonar featuring Garmin CHIRP technology. Using true dual independent transceivers is like having two sonars in one. Fish with CHIRP and/or traditional sonar. So you can sweep across many frequencies from 28kHz to 210kHz or manually adjust to specific frequencies to focus on certain fish at certain depths. With optimum transmit power of up to 3kW, the GSD 26 scans as deep

as 4,500 meters (over 15,000 feet). CHIRP sonar technology puts more energy into the water and on to the target, which means incredibly precise and detailed sonar imagery with 7 times the resolution at 1,000', even at low frequencies. Even greater resolution can be achieved using the shift feature to dial into a specific water column range. Target details so extreme you can actually distinguish between small and closely spaced fish at key fishing depths.

Premium CHIRP and Scanning Sonar Module

The GSD 25 premium sonar module is a remote network solution that provides outstanding fishfinding and bottom tracking capabilities. It offers true dual-channel 1kW CHIRP, plus Garmin CHIRP DownVu and SideVu sonar scanning for the clearest scanning images on the water. The images sent to your compatible

Garmin chartplotter have target details so clear and precise, you can actually distinguish between small and closely spaced fish at key fishing depths all the way down to 5,000 ft. Designed for use with the Garmin GPSMAP 8000 Glass Helm series or new GPSMAP® 7400/7600 series chartplotters.



UNIT FEATURES >>>

- Incorporates powerful CHIRP sonar technology
- Dual-channel receivers: two transmitters and two receivers
- The dual transmitter allows simultaneous and independent dual frequency display
- Powerful digital signal delivers exceptional signal reproduction and performance in deep water

- Manually adjustable frequency from 28 kHz to 210 kHz
- Optional output power between 300W and 3kW
- Max. depth 4,500 meters (over 15,000 feet).
- Compatible with Airmar® transducers with CHIRP technology
- Waterproof (IPX7)¹
- Simple installation

GSD 26 Part no: 010-00958-00
MSRP: \$1999.99



UNIT FEATURES >>>

- Designed for the serious offshore sportfisherman
- Premium remote network sonar solution
- Provides outstanding fishfinding and bottom tracking capabilities
- Includes dual-channel 1kW CHIRP, plus SideVu and DownVu sonar scanning with CHIRP technology for the clearest images on the water
- Depth capability to 5,000 feet

- Garmin Proprietary all-in-one CHIRP/DownVu/SideVu transducers available in mid-band CHIRP 80-160/455/800 kHz or mid-band CHIRP 80-160/260/455 kHz frequencies are sold separately
- Get target details so precise, you can actually distinguish between small and closely spaced fish at key fishing depths
- For use with the Garmin GPSMAP 8000 Glass Helm series or GPSMAP 7400/7600 series chartplotters

GSD 25 Part no: 010-01159-00
MSRP: \$899.99

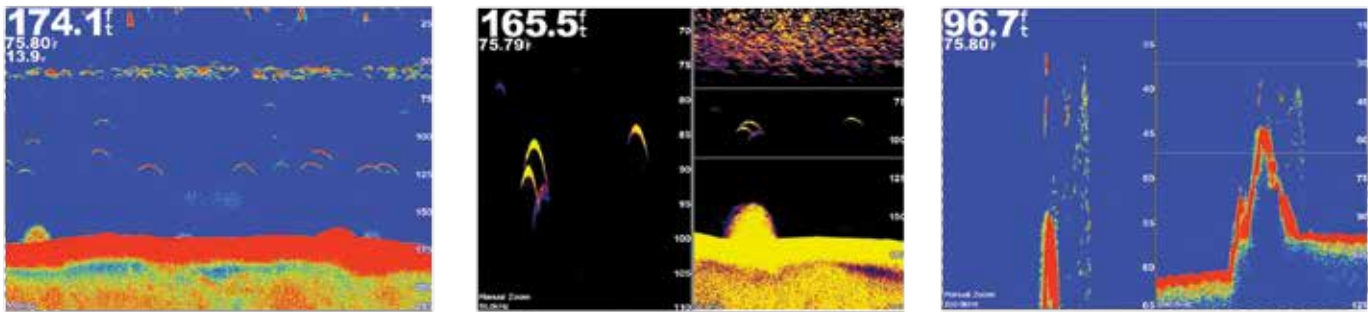


GSD 24



Advanced Sonar Module

The GSD 24 started with anglers like you telling us to make digital sonar with enough power and clarity to dramatically improve your fishing experience. So, we did. This design provides the best combination of performance and value. The powerful, dual-frequency GSD 24 offers selectable transmit power up to 2 kW for pinpoint accuracy at depths of up to 5,000 feet (1,500 m). You get enhanced separation of images and deeper bottom detection for a clear view of fish, terrain and structure on your compatible Garmin chartplotter. Easy plug-and-play connectivity to the Garmin Marine Network.



- UNIT FEATURES >>>
- Displays depth, fish echoes and bottom contours
 - Produces a clear image with excellent signal reproduction and performance in deep water
 - Optional output power of 600W, 1kW or 2kW
 - Two frequencies: 50 and 200kHz
 - Max. depth 1,500 m
 - Simple installation with Garmin Marine Network™

GSD 24 Part no: 010-00957-00
MSRP: \$699.99

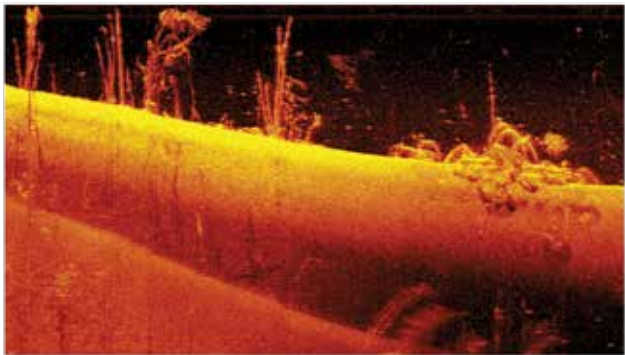
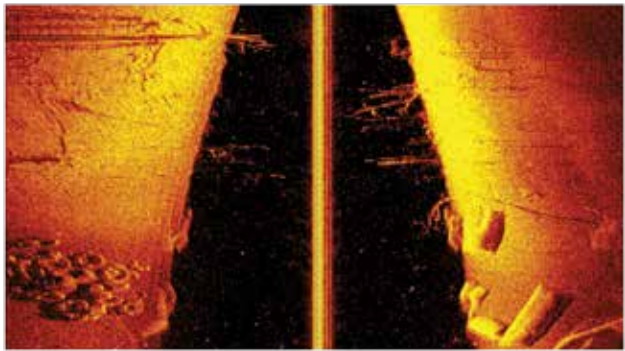


GCV 10



Scanning Sonar Module

The Garmin GCV™ 10 black box sonar adds both SideVü and DownVü with CHIRP scanning sonar technology to your compatible Garmin echoMAP™ 70s/ echoMAP 70dv or GPSMAP 700, 800, 1000, 7400/7600 and 8000 series. CHIRP technology sweeps through a range of frequencies to give you an ultra-clear sonar picture of objects, structure and fish that pass below (DownVü) and to the sides (SideVü) of the boat. Together with your combo's HD-ID™ sonar, you get an excellent search and confirmation tool for advanced fishfinding in both fresh and saltwater.



UNIT FEATURES >>>

- Compatible with GPSMAP 8000/7600/7400/1000/800/700 series & echoMAP 70s/70dv series
- Provides both DownVü and SideVü with CHIRP scanning sonar technology for a high-frequency, ultra-clear sonar picture of objects, structure and fish that pass below (DownVü) and to the sides (SideVü) of the boat
- With transducer model includes 12-pin all-in-one DownVü/SideVü transducer with 20 ft. cable
- 3 Network ports provided for advanced networking capability
- Excellent search and confirmation tool for advanced fishfinding in both fresh and saltwater
- Jackplate and step mount available (sold separately)

GCV 10 with transducer
Part no: 010-01156-00 MSRP: \$599.99
GCV 10 without transducer
Part no: 010-01156-10 MSRP: \$399.99





THE POWER OF SIMPLE™



Our goal is to make your time on the water as pleasant and enjoyable as possible. So we make highly complex, powerful technology that's extremely easy to use. So it simply does what you need it to do. That's the power of simple.

A SENSIBLE MENU

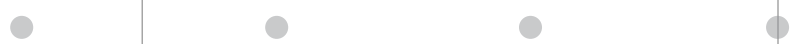
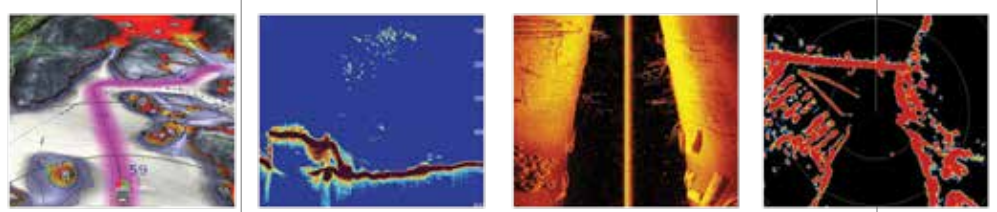
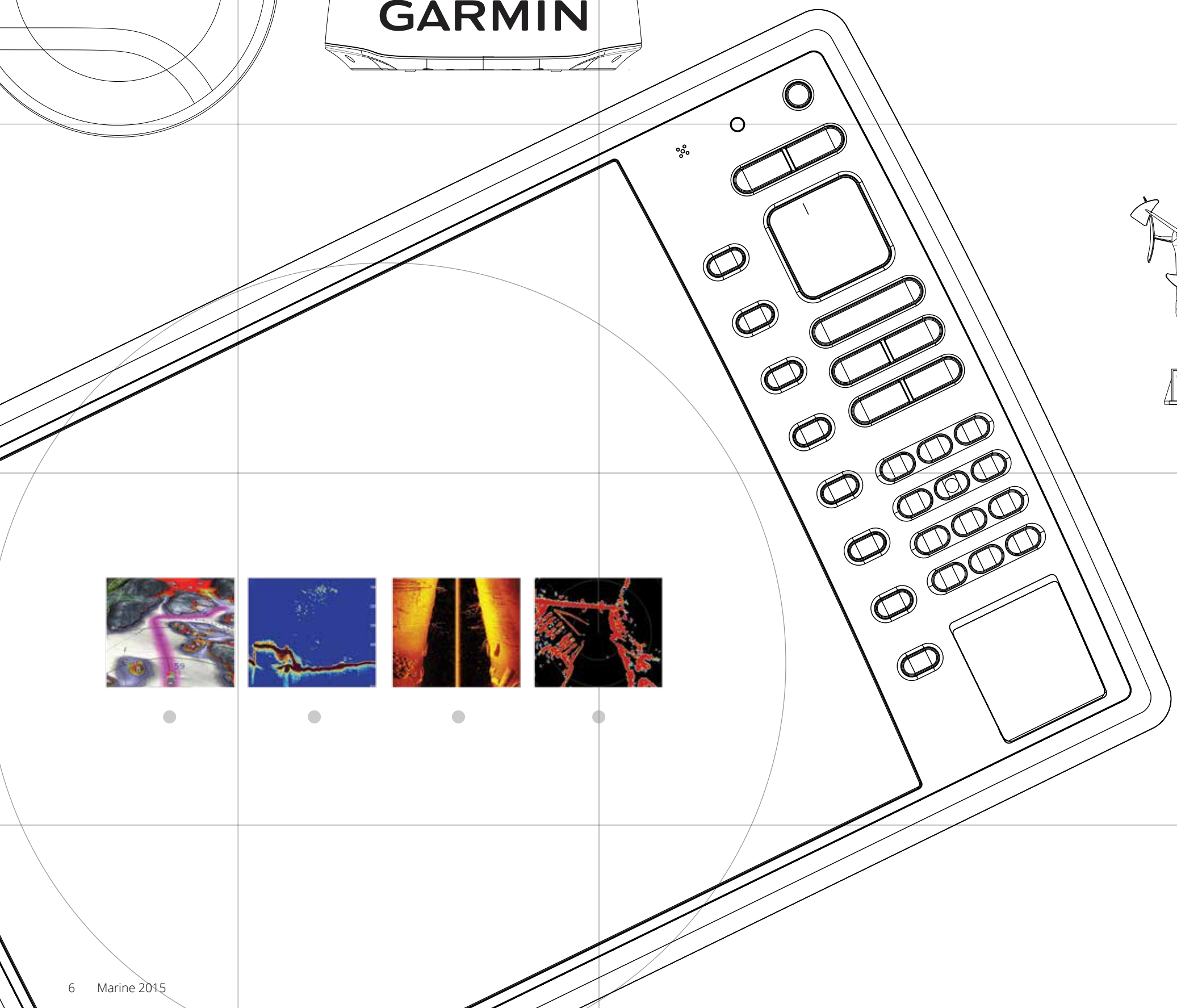
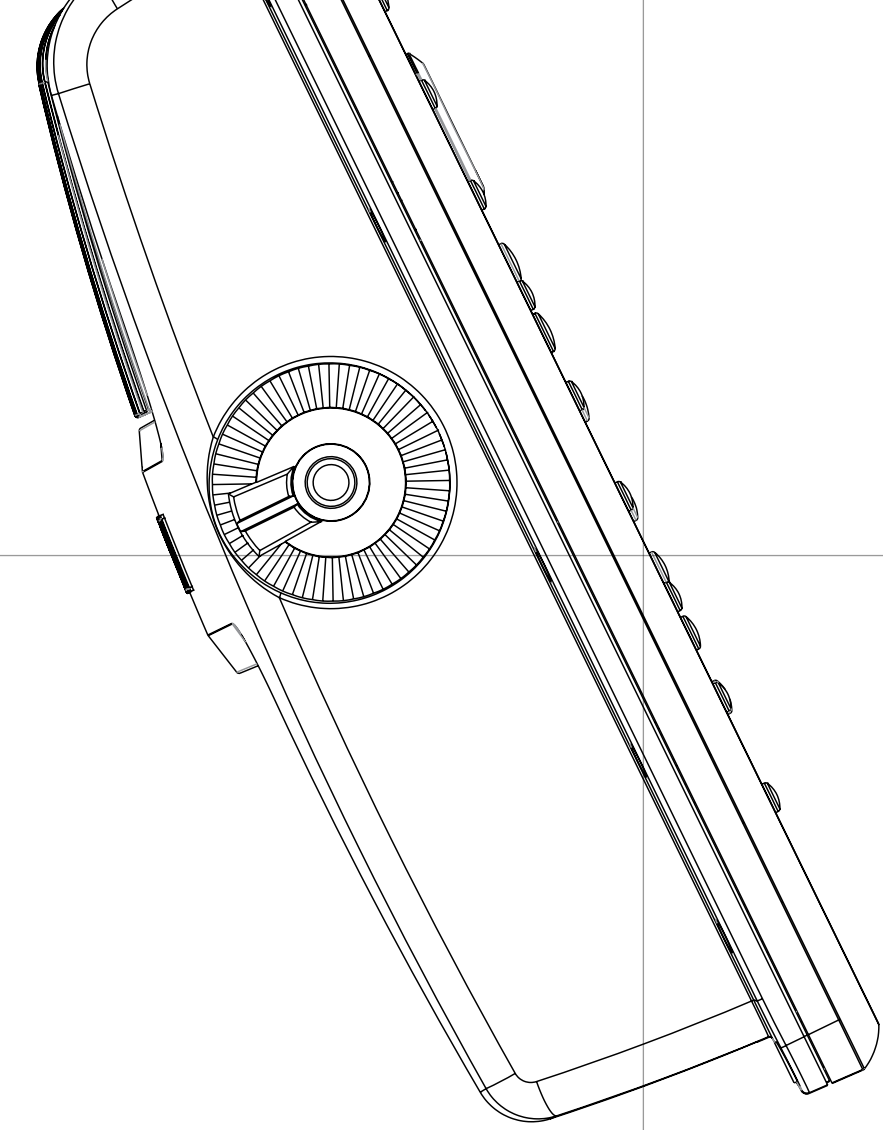
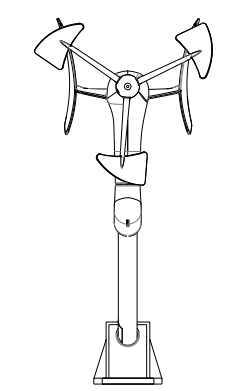
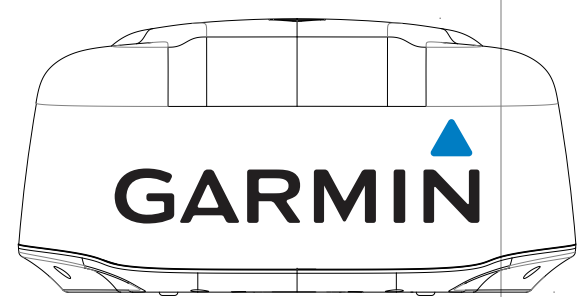
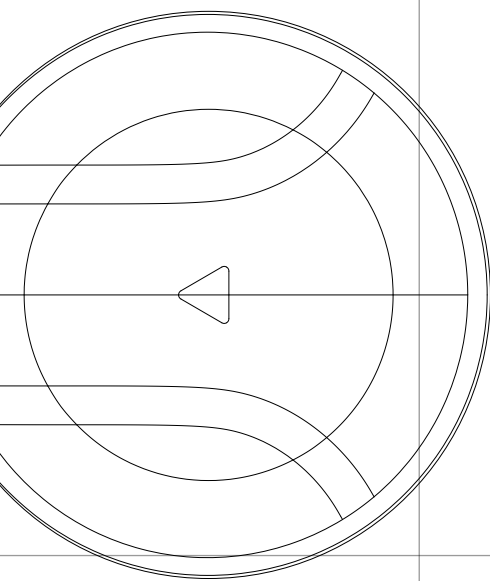
You probably already know how to use a Garmin chartplotter. It's that intuitive. Just turn it on and you can quickly follow the simple menu. In fact, all Garmin products are designed to be powerfully simple to use.

SIMPLIFIED NAVIGATION

Everything is at your fingertips to quickly and easily plan your route and set your course. You will venture out with added confidence and so can your crew and guests.

HELPFUL SUPPORT

Garmin staffs, maintains and trains our own product support team so you always have knowledgeable, helpful support and advice available when you need it.



TECHNOLOGY



Garmin marine products are designed to work simply and to work together beautifully. So Garmin chartplotters work with Garmin radar and Garmin autopilots and Garmin maps and charts, and on down the Garmin line. We also build in unique capabilities, such as being able to control a Garmin chartplotter and autopilot with the unique Garmin quatix™ marine navigation watch. And our BlueChart Mobile 2.0 app that allows you to acquire weather through a cellular-based Apple device and stream that weather onto your chartplotter screen.

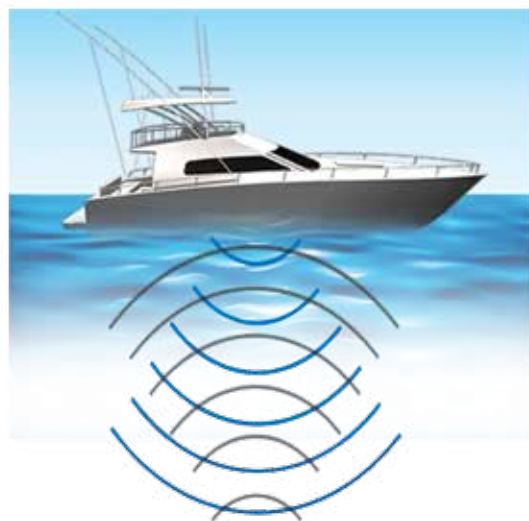
CHIRP Sonar



CHIRP is the most sophisticated sonar technology available for use by the fishing and boating public. The word itself is an acronym for Compressed High-Intensity Radiated Pulse.

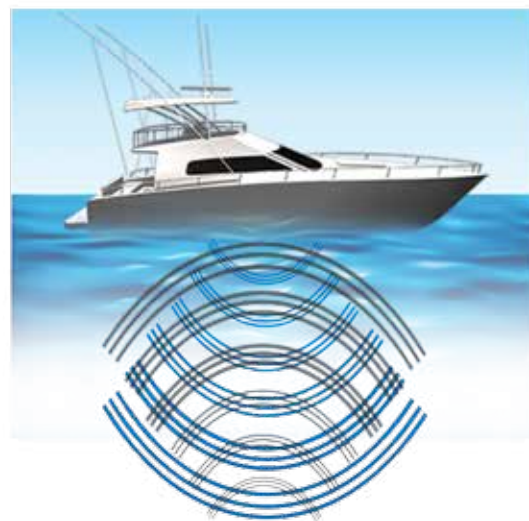
Standard Sonar

Standard sonar sends 1 single frequency at a time. Since the only feedback is from this 1 single frequency, there is little information to work with, limiting the clarity and resolution available with standard sonar.

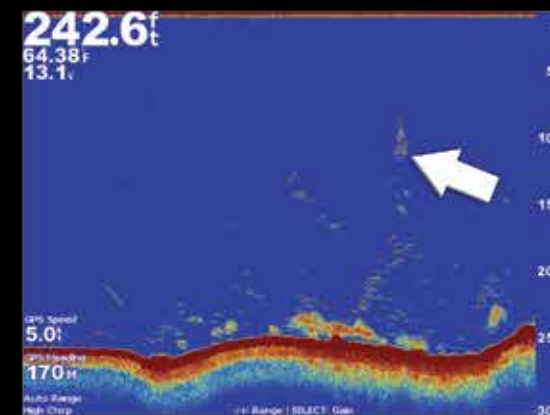


CHIRP Sonar

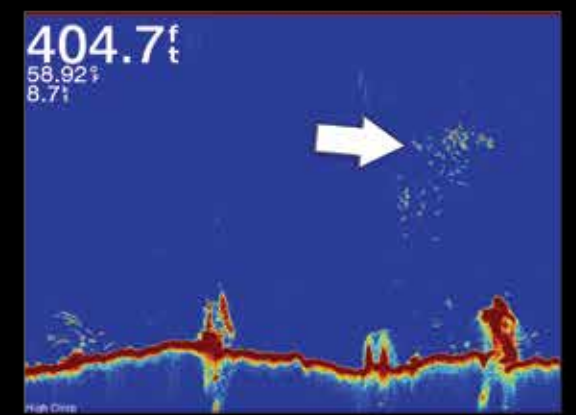
Instead of sending just 1 single frequency, CHIRP sends a continuous sweep of frequencies ranging from low to high. CHIRP sonar technology then interprets frequencies individually upon their return. Since this continuous sweep of frequencies provides CHIRP with a much wider range of information, CHIRP sonar is able to create a much clearer, higher resolution image.



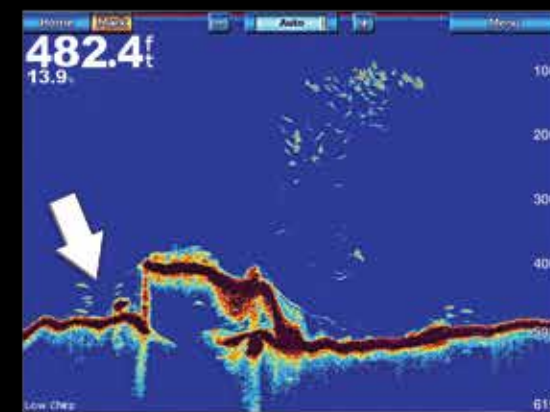
The key to CHIRP sonar is the interpretation of the data retrieved. The better the data interpretation, the better the screen image. Compare un-doctored screen images provided by actual Garmin sonar owners to any other CHIRP sonar images you have seen. We think you'll agree that when it comes to CHIRP sonar technology, Garmin is creating products that interpret CHIRP sonar data the best.



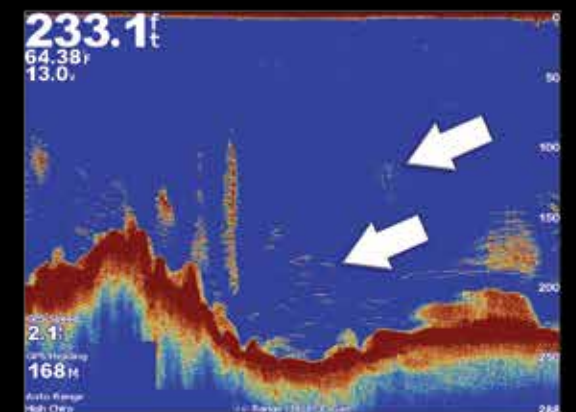
Improved target resolution enables you to actually see individual baitfish separately.



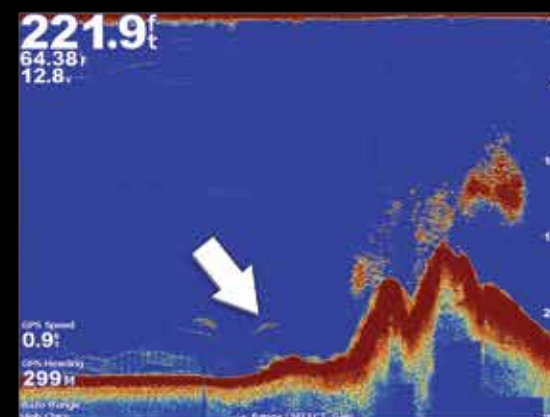
A sweep of tones delivers more data, providing a much higher resolution, clearer depiction of targets on screen.



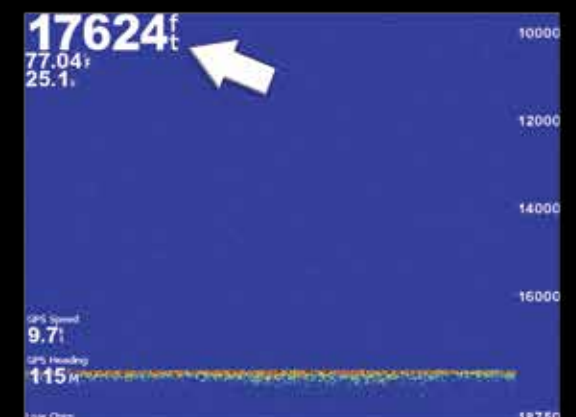
CHIRP has the sensitivity to differentiate between subtle differences to create a clearer image of what's below.



Improved target resolution enables you to differentiate between big fish and tight clusters of baitfish.



CHIRP doubles the power put on the target.



And it goes really deep.

ClearVü™ Scanning Sonar



Garmin echo™ fishfinders, echoMAP™ and GPSMAP® combo chartplotters are available in versions with built-in advanced HD-ID™ sonar plus Garmin DownVü™ and SideVü™ scanning sonar providing the clearest scanning sonar images on the water. We even added our popular Garmin CHIRP sonar capabilities to our new GPSMAP models, including CHIRP DownVü and SideVü scanning sonar. The GCV 10 Scanning Sonar Module makes it possible to add Garmin DownVü and SideVü scanning sonar with CHIRP technology to some earlier units equipped only with HD-ID™ sonar. CHIRP sonar technology puts more power, more energy into the water and onto targets. That added sonar power greatly enhances small target detection, target separation, and image resolution. You can actually distinguish between small baitfish and game fish. You can also tell the difference between hard and soft bottom.

And, as usual, we made our new products with scanning sonar incredibly easy to install, easy to understand and seriously easy to use. That's the power of simple. Visit www.garmin.com for updated device compatibility information.



Superior Resolution

Enhanced resolution for greater target separation and stunning details.



Dynamic Range

Wide dynamic range for small target detection, making sure you see more than ever.



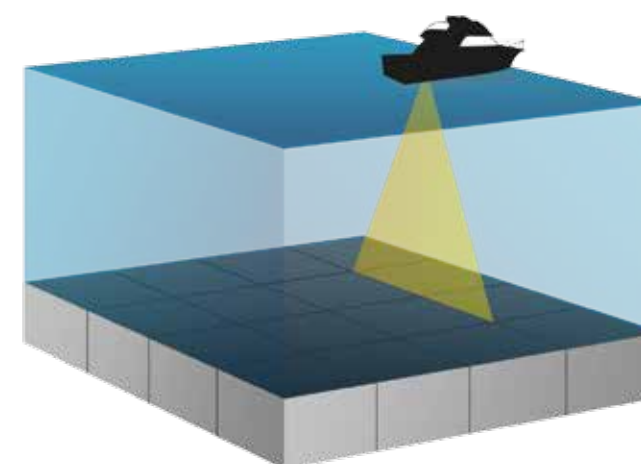
Clearer Picture

Noise suppression allows for a much clearer picture – a real feast for your eyes.



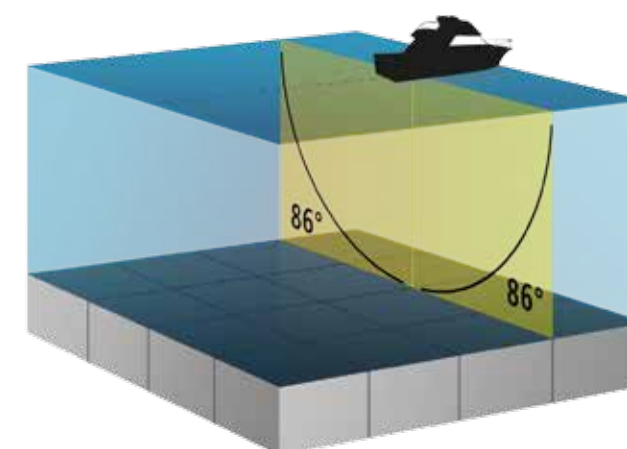
DownVü

This high-frequency sonar gives you a clearer picture of what's below your boat, by producing a more detailed representation of objects, structure and fish. DownVü with CHIRP technology takes it one step further, producing an ultra-clear page with even more detail.

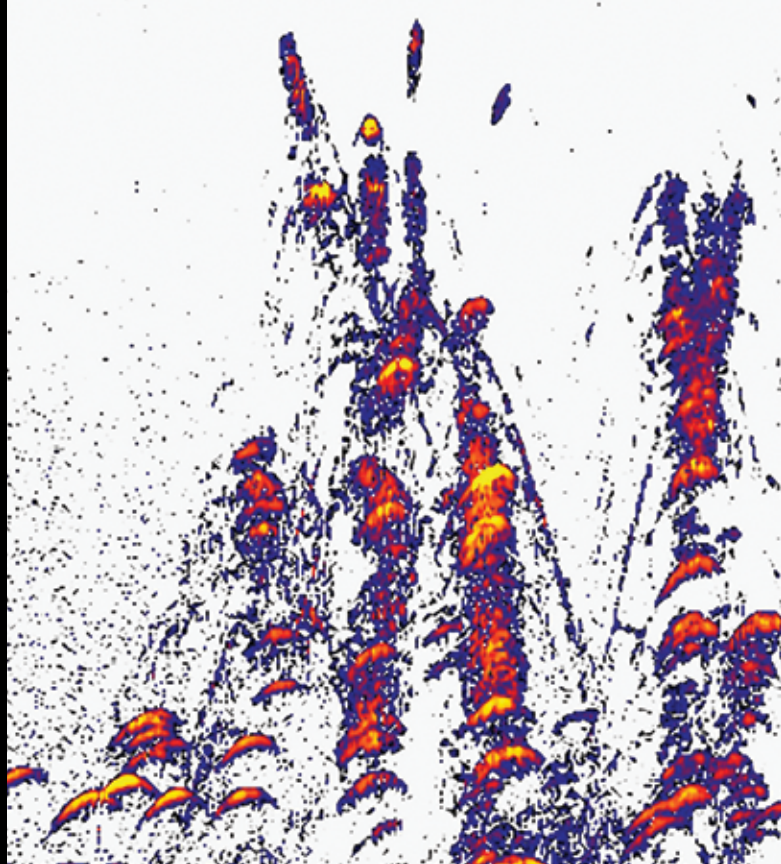


SideVü

SideVü shows you what is happening to the sides of your boat. An excellent way of finding structures and fish. SideVü with CHIRP technology provides an even more detailed and higher resolution image of what is beneath the surface.



HD-ID[™] Sonar



Auto Guidance 2.0



Patented Garmin Auto Guidance was the first automatic guidance navigation aid of its kind and now Auto Guidance 2.0 is even more unique to boating. Available when you upgrade your maps to Garmin LakeVü[™] HD Ultra or BlueChart[®] g2 Vision[™], Auto Guidance 2.0 creates a visible path you can follow, designed for your boat's specification helping you avoid charted hazards and obstructions right to your destination. With Auto Guidance 2.0, you get all the features of our original Garmin Auto Guidance plus many more including the ability to adjust your Auto Guidance path, review hazards along your path, calculate arrival times and save Auto Guidance paths for future navigation.

We have improved our proprietary software used to interpret sonar data returns with Garmin exclusive HD-ID target tracking technology to provide even crisper fish arches, improved structure detail, and better separation of images.

FUSION- Link[™]



FUSION-Link[™] is regarded as the industry standard for entertainment integration. It allows your compatible Garmin chartplotter or combo the ability to integrate with, and utilize specialized FUSION entertainment functionality, creating a centralized control station for the entire vessel and a more user-friendly experience.

Simple Improvements



The already easy-to-use Garmin interface has been simplified and improved even further. The improved Home Screen gives you easy access to your most often used items – Favorites, Functions, Combos and SmartModes™. You can now also resize panes and auto-hide the menu bar to use the full touchscreen. When powering on the unit, it can return to the last function or screen layout you were using prior to turning off the unit. And you also have added gauge range improvements.

Shadow Drive



Garmin Shadow Drive technology provides the security of knowing you maintain control even when your autopilot is engaged. The Shadow Drive system automatically disengages the autopilot if the helm is turned, giving you the freedom to maneuver the boat. The autopilot automatically re-engages when you hold a steady course. Simple.

Digital Switching



A full digital switching system gives you full one-touch helm control of AC mains, charge inverter, and virtual devices on the GPSMAP® 8000/7600/7400 Series. You can power up your boat while away from the dock. Switch on pumps. Control lights even underwater lights. Nearly all of your controls are available right at your fingertips either at the helm, or programmed into a remote key fob, or an app on your tablet.

Dual Radar



Provides redundancy and the ability for each display unit on the boat to select data from one of two different radar sources.

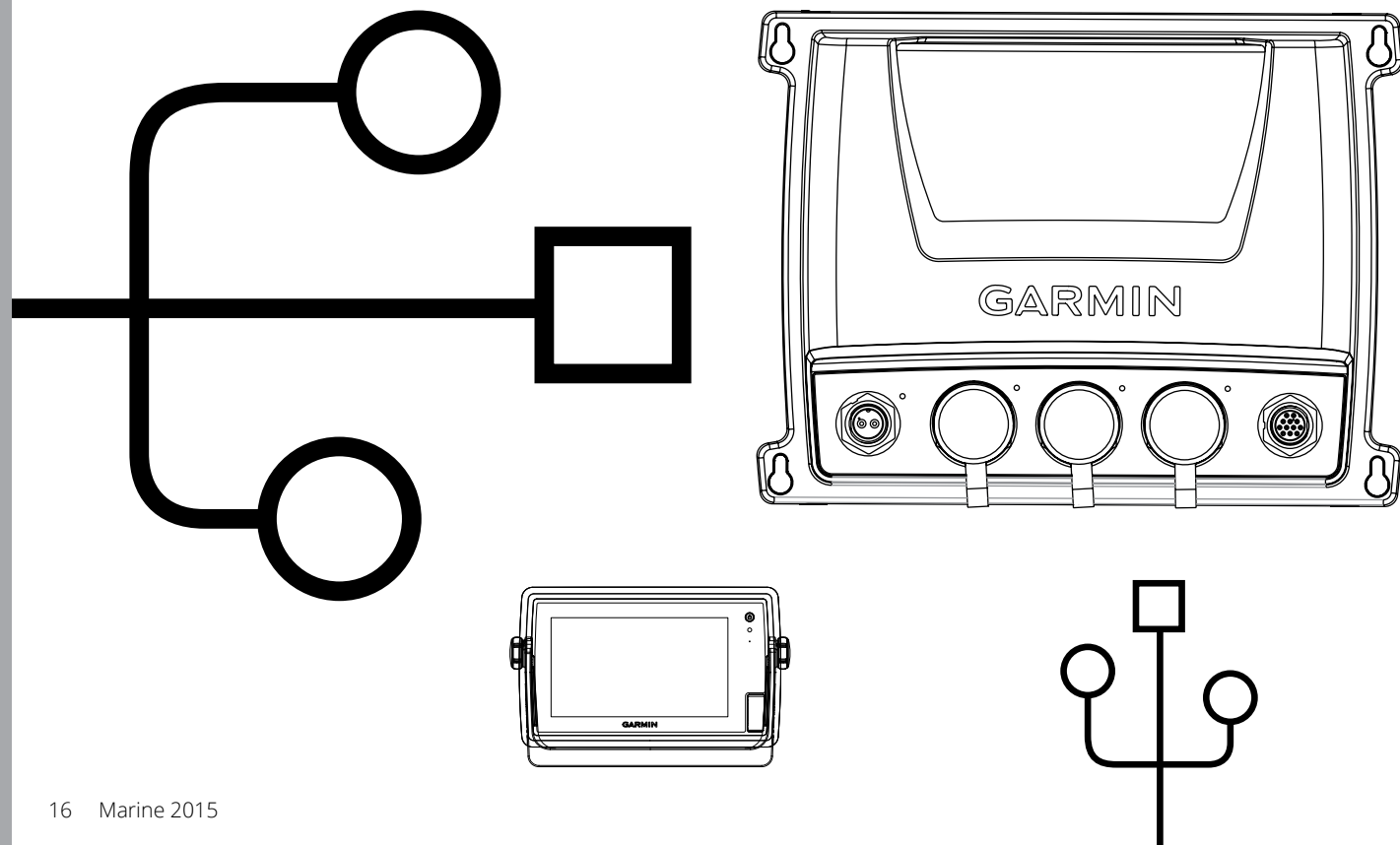
Garmin Marine Network & NMEA 2000®



Garmin makes it easy to connect multiple devices and instruments in your boat. Simply combine the Garmin Marine Network with the NMEA 2000 to view multiple functions, such as chartplotter, radar, sonar, AIS and video surveillance, on one or more displays. All Garmin Marine Network and NMEA 2000 devices come with an easy plug-and-play setup. The system automatically detects the devices in the network and makes them ready to use.

All connectors are waterproof and the speed of the network is impressive. This means you can simultaneously view radar images, charts, soundings and other information on one or more displays in real time without any delay. With an almost endless number of options, you can make your on-board network as advanced as you like.

You'll find examples of networks in the Specification section on page 116.



Mounting Options



Quick-Release Mount

Some models feature the added security of a quick-release bail mount. Cords plug directly into the mount allowing you to quickly install and remove your device from power and mount.



Bail mount Mount

Expand your options for mounting your chartplotter. Bail mount allows you to install your chartplotter on any flat surface of your boat.



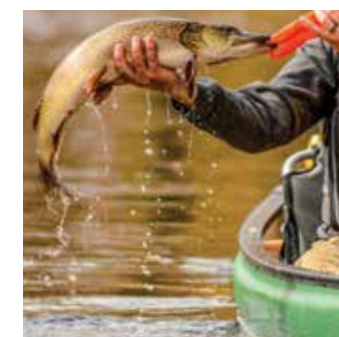
Flush Mount

A low-profile flush mount is easy to position and suits most flat surfaces in your boat.



Flat mount

The unique flat-mounted option makes the display a part of the dash. No edges or visible covers, just a beautiful clear glass screen.



Kayak Mount

Designed to work with all current echo and echoMAP dv products. Provides a versatile, easy-to-install mounting solution. Compatible with Garmin HD-ID™ traditional sonar and DownVu scanning sonar transducers.

Accessories



GPSMAP 8000 Series			
Part Number	UPC	MSRP	Description
GPSMAP 8008/8208			
010-11984-01	753759998905	\$27.00	Bail mount
010-11985-01	753759998929	\$16.00	Mounting gasket
010-12018-00	753759108083	\$89.99	Flat mount kit
010-11986-01	753759998981	\$24.99	Trim piece snap cover
010-11987-01	753759999049	\$14.00	Protective cover
GPSMAP 8012/8212			
010-11984-02	753759998912	\$36.00	Bail mount
010-11985-02	753759998936	\$16.00	Mounting gasket
010-12018-01	753759108090	\$89.99	Flat Mount Kit
010-11986-02	753759998998	\$25.99	Trim piece snap cover
010-11987-02	753759999056	\$14.00	Protective cover
GPSMAP 8015/8215			
010-11985-03	753759998943	\$16.00	Mounting gasket
010-12018-02	753759108106	\$89.99	Flat Mount Kit
010-11986-03	753759999001	\$26.99	Trim piece snap cover
010-11987-03	753759999063	\$14.00	Protective cover
GMM 150			
010-11985-04	753759998950	\$16.00	Mounting gasket
010-12019-00	753759108113	\$89.99	Flat Mount Kit
010-11986-04	753759999018	\$26.99	Trim piece snap cover
010-11987-04	753759999070	\$14.00	Protective cover
GMM 170			
010-11985-05	753759998967	\$17.00	Mounting gasket
010-12019-01	753759108120	\$89.99	Flat Mount Kit
010-11986-05	753759999025	\$27.99	Trim piece snap cover
010-11987-05	753759999087	\$16.00	Protective cover
GMM 190			
010-11985-06	753759998974	\$18.00	Mounting gasket
010-12019-02	753759108137	\$89.99	Flat Mount Kit
010-11986-06	753759999032	\$28.99	Trim piece snap cover
010-11987-06	753759999094	\$18.00	Protective cover
Series accessories			
010-01024-00	753759998172	\$399.99	GRID (Garmin Remote Input Device)
010-01023-00	753759998165	\$199.99	Garmin Card Reader
010-11986-07	753759108328	\$19.99	GRID Trim piece snap cover
010-11986-08	753759108335	\$19.99	Trim piece snap cover, Garmin Card Reader
010-12000-00	753759108144	\$19.99	DVI-D cable, 2m
010-12000-01	753759108151	\$49.99	DVI-D cable, 5m
010-12000-02	753759108168	\$79.99	DVI-D cable, 10m
010-11425-08	753759108175	\$35.00	Power cable, GMM 150/170/190
010-11425-09	753759108274	\$29.00	Network cable, 6ft
010-01146-00	753759084264	\$699.99	GXM 52 Weather and Audio XM Satellite Receiver (requires subscription)
010-11082-00	753759078188	\$9.00	Pole mount adapter
010-11083-00	753759078195	\$9.00	Surface mount adapter
010-11084-00	753759078201	\$9.00	Under deck mount
010-11984-02	753759099510	\$36.00	Bail mount w/knobs
010-10550-00	753759046125	\$28.91	6ft Marine network cable, RJ45
010-10551-00	753759046132	\$41.58	20ft Marine network cable, RJ45
010-10552-00	753759046149	\$58.55	40ft Marine network cable, RJ45
010-10562-00	753759046323	\$2.50	Cable grommet
010-10580-00	753759047443	\$38.91	Cable coupler, marine network
010-10603-00	753759048365	\$10.91	Marine network cable connector RJ45, 2-pack
010-10603-01	753759049942	\$99.00	Marine network cable connector RJ45, 20-pack
010-10647-01	753759049966	\$202.45	500ft Bulk, Marine network cable, RJ45
010-10817-02	753759067663	\$2.00	Weather cap, NMEA 0183 cable
010-10817-03	753759067670	\$2.00	Weather cap, power/data cable
010-10817-04	753759067687	\$3.60	Weather cap, network cable
010-11425-00	753759094111	\$36.00	Video cable (threaded)
010-11425-01	753759099428	\$35.00	Power cable (threaded)
010-11425-02	753759099435	\$30.00	NMEA 0183 cable (threaded)
010-11425-03	753759099442	\$36.00	Video cable (threaded, right angle)
010-11425-04	753759099459	\$35.00	Power cable (threaded, right angle)
010-11425-05	753759099466	\$30.00	NMEA 0183 cable (threaded, right angle)
010-11425-06	753759099473	\$38.00	Multimedia cable (right angle)
010-11454-00	753759101107	\$46.99	Antenna cable (10m)
010-10683-05	753759103477	\$15.99	4GB microSD card with SD adapter
010-00351-00	753759045524	\$249.99	GMS 10 Network Port Expander (Network Device)
010-11417-00	753759099220	\$899.99	Marine heading sensor, Airmar H2183
010-11418-00	753759099237	\$99.99	Marine heading sensor cable, NMEA 0183, 10m
010-11419-00	753759099237	\$99.99	Marine heading sensor cable, NMEA 2000, 6m
010-11981-20	753759998530	\$199.99	Garmin Wi-Fi Adapter, for use with Garmin BlueChart Mobile (separate purchase)

GCV 10			
Part Number	UPC	MSRP	Description
010-12089-00	753759114947	\$199.99	Right angle transducer adapter cable, GCV 10
010-12089-10	753759128005	\$699.99	GT30-TH, DV/SV,455/800,Thru Hull
010-12089-11	753759128012	\$1,249.99	GT30-THP,DV/SV,455/800,Thru Hull Pair
010-12106-00	753759114985	\$19.99	Step Mount
010-12106-01	753759114992	\$19.99	Jack Plate Mount
010-12006-00	753759111403	\$24.99	Transom Mount
010-11617-30	753759997700	\$39.99	10ft Transducer Extension Cable
010-11617-40	753759107185	\$49.99	30ft Transducer Extension Cable
010-12097-00	753759114954	\$49.99	Power Cable, Right Angle
010-12262-10	753759132323	\$16.99	12-pin Transducer Cable Adapter, Right Angle

GPSMAP 7600 / 7400 Series			
Part Number	UPC	MSRP	Description
GPSMAP 7x07			
010-12163-00	753759134297	\$24.99	Bail Mount,GPSMap 7x07
010-12164-00	753759133610	\$14.99	Flush Mount Gasket,GPSMap 7x07
010-12165-00	753759133627	\$4.99	Top/Bottom Trim Cap Bezel,GPSMap 7x07
010-12166-00	753759133634	\$14.99	Protective Sun Cover, GPSMap 7x07
010-12167-10	753759133641	\$4.99	SD Card Door,Repl,GPSMap 7x07
GPSMAP 7x08			
010-12163-01	753759120993	\$24.99	Bail Mount,GPSMap 7x08
010-12164-01	753759121020	\$14.99	Flush Mount Gasket,GPSMap 7x08
010-12165-01	753759121051	\$4.99	Top/Bottom Trim Cap Bezel, GPSMap 7x08
010-12166-01	753759121082	\$14.99	Protective Sun Cover,GPSMap 7x08
010-12167-00	753759121112	\$4.99	SD Card Door,Repl,GPSMap 7x08/7x10/7x12
GPSMAP 7x10			
010-12163-02	753759121006	\$35.99	Bail Mount,GPSMap 7x10
010-12164-02	753759121037	\$14.99	Flush Mount Gasket,GPSMap 7x10
010-12165-02	753759121068	\$4.99	Top/Bottom Trim Cap Bezel,GPSMap 7x10
010-12166-02	753759121099	\$14.99	Protective Sun Cover,GPSMap 7x10
010-12167-00	753759121112	\$4.99	SD Card Door,Repl,GPSMap 7x08/7x10/7x12
GPSMAP 7x12			
010-12163-03	753759121013	\$35.99	Bail Mount,GPSMap 7x12
010-12164-03	753759121044	\$14.99	Flush Mount Gasket,GPSMap 7x12
010-12165-03	753759121075	\$4.99	Top/Bottom Trim Cap Bezel, GPSMAP 7x12
010-12166-03	753759121105	\$14.99	Protective Sun Cover,GPSMap 7x12
010-12167-00	753759121112	\$4.99	SD Card Door,Repl,GPSMap 7x08/7x10/7x12

GPSMAP 7000 & 6000 Series			
Part Number	UPC	MSRP	Description
GPSMAP 7015/7215			
010-11428-03	753759099596	\$14.00	Protective cover
010-11427-03	753759099558	\$16.00	Flush mount gasket
010-11429-07	753759099671	\$18.00	Top & bottom snap covers
GPSMAP 7012/7212			
010-11428-02	753759099589	\$14.00	Protective cover
010-11427-02	753759099541	\$16.00	Flush mount gasket
010-11429-05	753759099657	\$14.00	Top & bottom snap covers
GPSMAP 6012/6212			
010-11428-01	753759099572	\$14.00	Protective cover
010-11427-01	753759099534	\$16.00	Flush mount gasket
010-11427-01	753759099534	\$16.00	Flush mount gasket
GPSMAP 6008/6208			
010-11428-00	753759099565	\$14.00	Protective cover
010-11427-00	753759099527	\$16.00	Flush mount gasket
010-11429-01	753759099619	\$14.00	Top & bottom snap covers
Series accessories			
010-01146-00	753759111397	\$699.99	GXM 52 Weather and Audio XM Satellite Receiver (requires subscription)
010-11082-00	753759078188	\$9.00	Pole mount adapter
010-11083-00	753759078195	\$9.00	Surface mount adapter
010-11084-00	753759078201	\$9.00	Under deck mount
010-11426-02	753759099510	\$36.00	Bail mount w/knobs
010-10550-00	753759046125	\$28.91	6ft Marine network cable, RJ45
010-10551-00	753759046132	\$41.58	20ft Marine network cable, RJ45
010-10552-00	753759046149	\$58.55	40ft Marine network cable, RJ45
010-10562-00	753759046323	\$2.50	Cable grommet
010-10603-00	753759047443	\$38.91	Cable coupler, marine network
010-10603-01	753759048365	\$10.91	Marine network cable connector RJ45, 2-pack
010-10603-02	753759049942	\$99.00	Marine network cable connector RJ45, 20-pack
010-10647-01	753759049966	\$202.45	500ft Bulk, Marine network cable, RJ45
010-10817-02	753759067663	\$2.00	Weather cap, NMEA 0183 cable
010-10817-03	753759067670	\$2.00	Weather cap, power/data cable
010-10817-04	753759067687	\$3.60	Weather cap, network cable
010-11425-00	753759094111	\$36.00	Video cable (threaded)
010-11425-01	753759099428	\$35.00	Power cable (threaded)
010-11425-02	753759099435	\$30.00	NMEA 0183 cable (threaded)
010-11425-03	753759099442	\$36.00	Video cable (threaded, right angle)
010-11425-04	753759099459	\$35.00	Power cable (threaded, right angle)
010-11425-05	753759099466	\$30.00	NMEA 0183 cable (threaded, right angle)
010-11425-06	753759099473	\$38.00	Multimedia cable (right angle)
010-11454-00	753759101107	\$46.99	Antenna cable (10m)
010-10683-05	753759103477	\$15.99	4GB microSD card with SD adapter
010-00351-00	753759045524	\$249.99	GMS 10 Network Port Expander (Network Device)
010-11417-00	753759099220	\$899.99	Marine heading sensor, Airmar H2183
010-11418-00	753759099237	\$99.99	Marine heading sensor cable, NMEA 0183, 10m
010-11419-00	753759099237	\$99.99	Marine heading sensor cable, NMEA 2000, 6m
010-11981-20	753759120498	\$249.99	Garmin Wi-Fi Adapter kit, includes DC and AC power adapters

GPSMAP 741/741xs			
Part Number	UPC	MSRP	Description
010-11970-00	753759998394	\$22.99	Power cable, 8-pin
010-11972-00	753759998417	\$14.99	Protective Cover
010-11976-00	753759998455	\$4.99	Trim Piece Snap Cover
010-11967-00	753759998363	\$24.99	Bail Mount with Knobs
010-11969-00	753759998387	\$39.99	Second Mounting Station
010-11978-00	753759998479	\$14.99	Flush Mount Kit
010-12059-00	753759110642	\$4.99	microSD Card Door (replacement)
010-11995-00	753759108458	\$49.99	Flat Mount Kit

GPSMAP 547/547xs			
Part Number	UPC	MSRP	Description
010-00753-00	753759084264	\$699.99	GXM 51 Weather and Audio XM Satellite Receiver (requires subscription)
010-12017-00	753759080842	\$69.99	GA 38 GPS/ GLONASS antenna
010-11082-00	753759078188	\$9.00	Pole mount adapter
010-11083-00	753759078195	\$9.00	Surface mount adapter
010-11084-00	753759078201	\$9.00	Under deck mount
010-10447-05	753759067403	\$26.99	Flush mounting kit
010-10921-00	753759067496	\$29.00	Marine swivel mounting bracket (replacement)
010-10930-00	753759067540	\$45.00	2nd Mounting station
010-11454-00	753759101107	\$46.99	Antenna cable (10m)
010-10683-05	753759103477	\$15.99	4GB microSD card with SD adapter
010-10912-00	753759067601	\$10.00	Protective cover (replacement)

echoMAP SV / DV Series			
Part Number	UPC	MSRP	Description
echoMAP 42dv/43dv/44dv/45dv			
010-12199-00	753759124717	\$14.99	Protective Cover
010-12199-01	753759128197	\$14.99	Flush Mount Kit
010-12199-03	753759133559	\$24.99	Tilt/Swivel Quick Release Mount
echoMAP 52dv/53dv/54dv/55dv			
010-12247-00	753759128456	\$14.99	Flush Mount Kit
010-12247-01	753759128463	\$4.99	Trim Piece Snap Covers
010-12247-02	753759128470	\$14.99	Protective Cover
echoMAP 72sv/73dv/73sv/74sv/75sv			
010-12233-00	753759135348	\$14.99	Protective Cover
010-12233-01	753759128210	\$14.99	Flush Mount Kit
010-12233-02	753759128227	\$4.99	Trim Piece Snap Covers
010-12233-03	753759133566	\$24.99	Bail Mount, echoMAP 7x/9x
010-12233-04	753759133580	\$4.99	MicroSD Card Door
echoMAP 92sv/93sv/94sv/95sv			
010-12234-00	753759127008	\$14.99	Protective Cover
010-12234-01	753759128234	\$14.99	Flush Mount Kit
010-12234-02	753759128241	\$4.99	Trim Piece Snap Covers
010-12233-03	753759133566	\$24.99	Bail Mount, echoMAP 7x/9x
010-12234-04	753759133597	\$4.99	MicroSD Card Door
Series Accessories			
010-12199-04	753759133573	\$22.99	Cable,Power,Data,6ft,echoMAP
010-12234-05	753759133603	\$29.99	Cable, 4-pin to 12 pin
010-12234-06	753759135928	\$19.99	User Sharing Data Cable

Accessories



echo Series							
Part Number	UPC	MSRP	Description	Part Number	UPC	MSRP	Description
echo 550c/500c/200							
010-11678-10	753759989484	\$19.99	Power cable, 18 AWG	010-11849-04	753759996901	\$34.99	AC charger, Euro, replacement for portable kit
010-11680-00	753759974541	\$14.99	Protective cover	010-11849-05	753759992224	\$34.99	Portable bag, replacement
010-11676-00	753759974527	\$20.99	Quick release mount with tilt/swivel	010-11849-07	753759992248	\$9.99	Suction cup transducer mount, replacement for portable kit
010-11682-00	753759974565	\$10.99	Flush mounting kit	010-11849-08	753759992255	\$14.99	Base and handle, replacement for portable kit
010-11849-00	753759989873	\$129.99	Portable echo kit	010-10279-04	753759980153	\$29.99	Speed Sensor (4-pin) - not for 301/301dv
010-11849-03	753759996895	\$34.99	AC charger, USA, replacement for portable kit	010-11615-00	753759974602	\$13.99	Transducer adapter, female 4-pin to male 6-pin
010-11849-04	753759996901	\$34.99	AC charger, Euro, replacement for portable kit	echo 150/100			
010-11849-05	753759992224	\$34.99	Portable bag, replacement	010-11678-10	753759989484	\$19.99	Power cable, 18 AWG
010-11849-07	753759992248	\$9.99	Suction cup transducer mount, replacement for portable kit	010-11679-00	753759974534	\$9.99	Protective cover
010-11849-08	753759992255	\$14.99	Base and handle, replacement for portable kit	010-11677-00	753759974510	\$11.99	Quick release mount with tilt/swivel
010-10279-04	753759980153	\$29.99	Speed Sensor (4-pin)	010-11681-00	753759974558	\$8.99	Flush mounting kit
010-11615-00	753759974602	\$13.99	Transducer adapter, female 4-pin to male 6-pin	010-11849-00	753759989873	\$129.99	Portable echo kit
echo 300c				010-11849-03	753759996895	\$34.99	AC charger, USA, replacement for portable kit
010-11678-10	753759989484	\$19.99	Power cable, 18 AWG	010-11849-04	753759996901	\$34.99	AC charger, Euro, replacement for portable kit
010-11679-00	753759974534	\$9.99	Protective cover	010-11849-05	753759992224	\$34.99	Portable bag, replacement
010-11677-00	753759974510	\$11.99	Quick release mount with tilt/swivel	010-11849-07	753759992248	\$9.99	Suction cup transducer mount, replacement for portable kit
010-11681-00	753759974558	\$8.99	Flush mounting kit	010-11849-08	753759992255	\$14.99	Base and handle, replacement for portable kit
010-11849-00	753759989873	\$129.99	Portable echo kit	010-11615-00	753759974602	\$13.99	Transducer adapter, female 4-pin to male 6-pin
010-11849-03	753759996895	\$34.99	AC charger, USA, replacement for portable kit				

Instruments			
Part Number	UPC	MSRP	Description
GMI 20			
010-12023-00	753759108670	\$26.99	Flat mount kit
010-12021-00	753759108656	\$7.99	Flat mount gasket
010-12020-00	753759108649	\$4.99	Protective cover
010-12022-00	753759108663	\$4.99	Trim snap piece cover (black)
010-12022-01	753759110390	\$4.99	Trim snap piece cover (silver/black)
NMEA 2000 Network & Marine Sensors			
010-11082-00	753759078188	\$9.00	Pole mount adapter
010-11083-00	753759078195	\$9.00	Surface mount adapter
010-11084-00	753759078201	\$9.00	Under deck mount
GMS 10 Network Port Expander			
010-10550-00	753759046125	\$28.91	6ft Marine network cable, RJ45
010-10551-00	753759046132	\$41.58	20ft Marine network cable, RJ45
010-10552-00	753759046149	\$58.55	40ft Marine network cable, RJ45
010-10553-00	753759046156	\$29.00	Power cable
010-10562-00	753759046323	\$2.50	Cable grommet
010-10580-00	753759047443	\$38.91	Cable coupler, marine network
010-10603-00	753759048365	\$10.91	Marine network cable connector RJ45, 2-pack
010-10603-01	753759049942	\$99.00	Marine network cable connector RJ45, 20-pack
010-10647-01	753759049966	\$202.45	500ft Bulk, Marine network cable, RJ45
010-10817-04	753759067687	\$3.60	Weather cap, network cable
GXM 52 SiriusXM Marine Receiver (requires subscription)			
010-11082-00	753759078188	\$9.00	Pole mount adapter
010-11083-00	753759078195	\$9.00	Surface mount adapter
010-11084-00	753759078201	\$9.00	Under deck mount
010-11170-01	753759095123	\$1.50	Threaded collar, split, 11mm connector
010-11295-00	753759093433	\$35.99	Audio extension cable, 10m
010-11296-00	753759093440	\$46.99	Audio extension cable, 20m
010-11297-00	753759093457	\$47.99	NMEA 2000/Audio cable, 6m
010-11298-00	753759093464	\$8.99	Audio cable, 305mm (7-pin to RCA)
010-11454-00	753759101107	\$46.99	Antenna cable (10m)
GC 10 Marine Camera			
010-11376-00	753759096755	\$6.00	BNC to RCA Adapter
010-11376-02	753759096762	\$29.99	5m Video extension cable
010-11376-03	753759096779	\$39.99	15m Video extension cable
GPS 19x			
010-11082-00	753759078188	\$9.00	Pole mount adapter
010-11083-00	753759078195	\$9.00	Surface mount adapter
010-11084-00	753759078201	\$9.00	Under deck mount
010-11824-00	753759984373	\$44.99	Power data cable
010-11824-01	753759984380	\$4.99	Update & rate select cable
Marine Heading Sensor			
010-11418-00	NA	\$99.99	Marine heading sensor cable (NMEA 0183, 32.8ft)
010-11419-00	NA	\$99.99	Marine heading sensor cable (NMEA 2000, 19.7ft)

gWind, gWind Race, gWind Wireless				
Part Number	UPC	MSRP	Description	
010-01226-00	753759112219	\$199.99	GND 10 black box bridge	
010-12117-00	753759119041	\$16.99	USB Mini-B Cable, GND 10	
010-12117-01	753759119058	\$69.99	Nexus Field Installable Connectors, M8 M/F	
010-12117-02	753759119065	\$24.99	gWind to nWind Connector Adapter Cable	
010-12117-03	753759119072	\$39.99	Nexus Network Cable, Straight Connector (5m)	
010-12117-04	753759116743	\$69.99	Mast Cable (25m)	
010-12117-05	753759116750	\$99.99	Mast Cable (40m)	
010-12117-06	753759116767	\$14.99	gWind Wireless	
010-12117-07	753759116774	\$79.99	Mast Bracket, gWind Race	
010-12117-08	753759116781	\$19.99	Propeller	
010-12117-09	753759119089	\$19.99	Nexus Cable, Bare Ends (8m)	
010-12117-10	753759119478	\$19.99	NiMH Battery Replacement	

VIRB Elite			
Part Number	UPC	MSRP	Description
010-11838-00	753759989392	\$24.99	Vehicle power cable
010-11921-04	753759993443	\$39.99	Dive case
010-11921-07	753759993474	\$24.99	Bike/large tube mount
010-11921-08	753759993481	\$14.99	Vented helmet strap mount
010-11921-09	753759993498	\$21.99	Head strap mount
010-11921-10	753759993504	\$39.99	Shoulder harness mount
010-11921-11	753759993511	\$6.99	Tripod mount
010-11921-12	753759993528	\$24.99	Wrist strap
010-11921-13	753759993535	\$24.99	Auto dash suction mount
010-11921-14	753759998653	\$29.99	Audio-video cable
010-11921-15	753759109790	\$19.99	Small tube mount
010-12094-00	753759114831	\$49.99	VIRB Remote control
010-12095-30	753759120238	\$24.99	Wrist strap kit

quatix			
Part Number	UPC	MSRP	Description
010-10635-00	753759048822	\$19.99	AC adapter (replacement)
010-10635-01	753759049911	\$32.90	AC adapter
010-10644-02	753759972424	\$89.99	External Power Pack
010-11814-10	753759992651	\$24.99	fenix USB/Charger Cable
010-01134-00	753759106904	\$199.99	GNT 10 NMEA transceiver
010-11814-02	753759992606	\$24.99	fenix Wrist Strap Kit
010-11814-03	753759992613	\$29.99	fenix Carabiner Strap
010-11814-20	753759106881	\$17.99	Dark gray band, replacement
010-11814-21	753759106898	\$17.99	Light gray band, replacement





SUPPORT/ CONTACT



You have our support.

If you ever have a question, a problem, need advice, or just some help installing your Garmin product, Garmin has a trained staff of technical support pros just sitting around in Olathe, Kansas waiting to hear from you. So, give them a call, or send an email. Seriously, you won't be bothering them. They're really not all that busy. They actually look forward to talking to you. Best part is they know all there is to know about getting you back on the water.



U.S. 913-397-8200 • U.S. Toll-free: 800-800-1020 • Canada: 866-429-9296



support.garmin.com



Mon–Thurs: 8am –6pm (CST) • Fri: 8am – 5pm (CST) • Closed Holidays



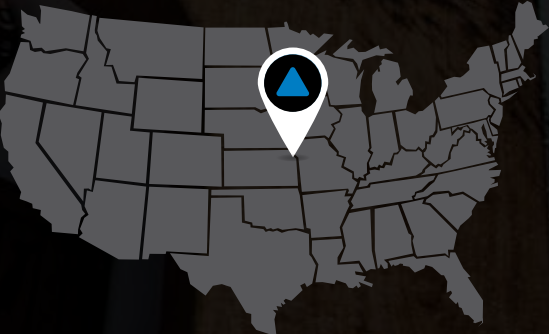
facebook.com/Garmin



[twitter.com \(@garmin\)](https://twitter.com/@garmin)



youtube.com/garmin



Garmin International, Inc. - 1200 East 151st Street, Olathe, KS 66062



THE
POWER
OF
SIMPLE™




GARMIN®

Garmin International, Inc.
1200 East 151st Street, Olathe, KS 66062
p: 913.397.8200 f: 913.397.8282

© 2015 Garmin Ltd. or its subsidiaries
M01-10348-00 1014
Designs, prices and features subject to change.

