

User's Guide
model 28512/28522



DECT 6.0
Cordless Telephone

Your new GE telephone system is EXPANDABLE up to 4 handsets (by purchase of optional Model 28502 handset with charge cradle)



visit our website:
www.thehomephones.com

Model 28512/28522
P/N:XXXXXXXXX
MEX E Version 1.1 12/2010
Printed in China
© 2010 CCT Tech Global Limited



is a trademark of
The General Electric Company
and is under license by
CCT Tech Global Limited,
Central, Hong Kong

Introduction

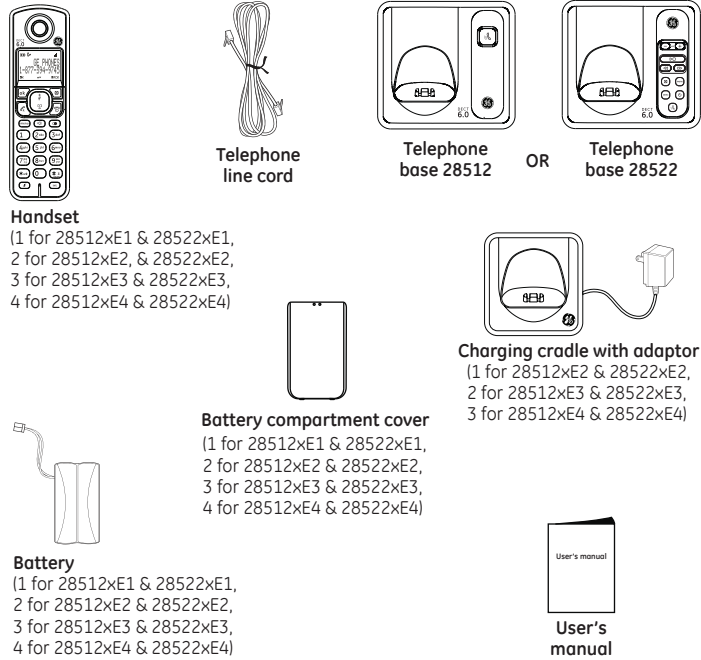
CAUTION: When using telephone equipment, there are basic safety instructions that should always be followed. Refer to the important safety instructions section in this book and save them for future reference.

IMPORTANT: Because cordless phones operate on electricity, you should have at least one phone in your home that isn't cordless, in case the power in your home goes out.

Before you begin

Parts Checklist

Make sure your package includes the items shown here.



Installation

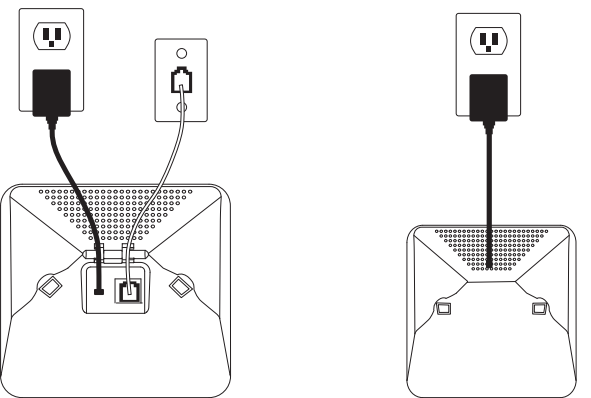
Important Installation Guidelines

- Avoid sources of noise and heat, such as motors, fluorescent lighting, microwave ovens, heating appliances and direct sunlight.
- Avoid areas of excessive dust, moisture and low temperature.
- Avoid other cordless telephones or personal computers.
- Never install telephone wiring during a lightning storm.
- Never install telephone jacks in wet locations unless the jack is specifically designed for wet locations.
- Never touch non-insulated telephone wires or terminals, unless the telephone line has been disconnected at the network interface.
- Use caution when installing or modifying telephone lines.

Installing the phone

Telephone base and charging cradle installation

Install the telephone base and charging cradles as shown below. Make sure that the electrical outlet is not controlled by a wall switch. If you have DSL high speed internet service, a DSL filter is required (not included). Contact your DSL service provider for more information about DSL filter.



Telephone Jack Requirements

To use this phone, you need an RJ11C type modular telephone jack, which might look like the one pictured here, installed in your home. If you don't have a modular jack, call your local phone company to find out how to get one installed.

CAUTION: Use only the power adaptor that came with this unit. (Base: IA5060, 100-240Vac/6Vdc/500mA. Charger: IA5060, 100-240Vac/6Vdc/500mA). Using other power adaptors may damage the unit.

Installing the Handset Battery

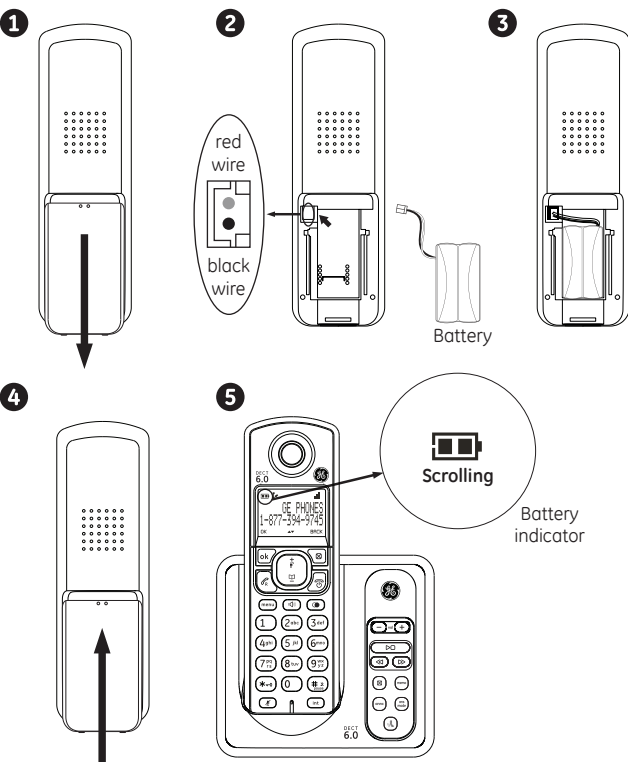
CAUTION: To reduce the risk of fire or personal injury, use only the CCT Tech Global Limited approved model H-AAA550BX2 or ZSN-AAA55H-S-J1 Nickel-metal Hydride battery (Ni-MH), which is compatible with this unit.

RISK OF EXPLOSION IF BATTERY IS REPLACED BY AN INCORRECT TYPE. DISPOSE OF USED BATTERIES ACCORDING TO THE INSTRUCTIONS.

1. If the battery compartment cover is on the handset, slide the cover to remove.
2. Plug the battery connector securely into the socket inside the handset battery compartment
3. Place the battery and the wire inside the battery compartment
4. Align the cover flat against the battery compartment, then slide it towards the center of the handset until it clicks into place
5. Charge the handset by placing it in the telephone base or charging cradle. The battery icon on LCD is scrolling when the handset charges.

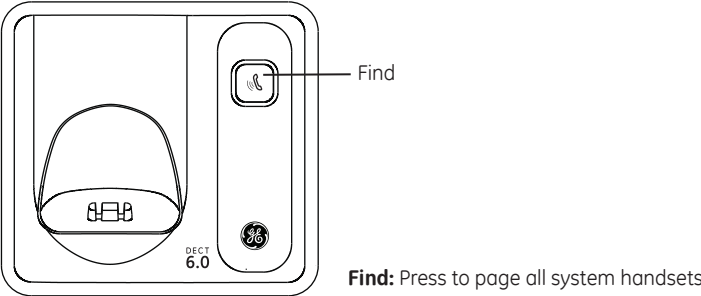
Please Fully Charge Before Using!

For optimum battery performance, charge the battery for 16 hours before use.

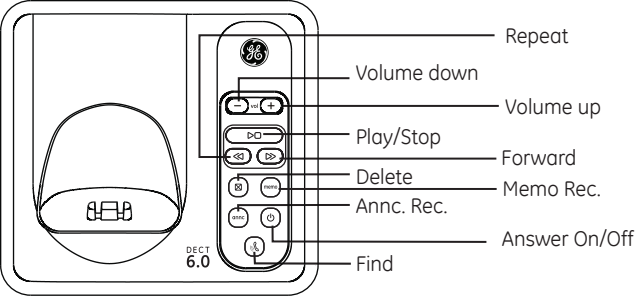


Base layout

Basic Base

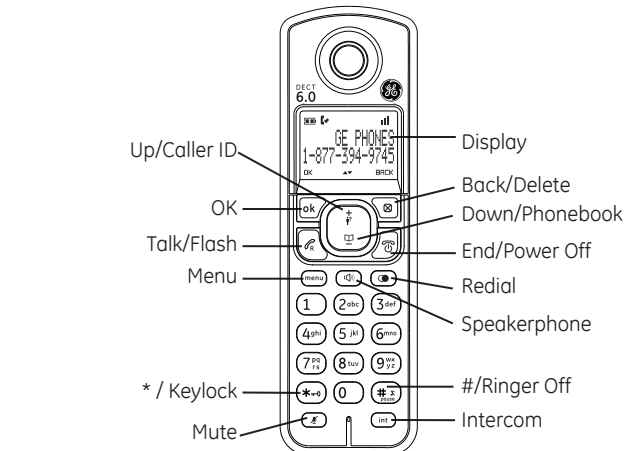


Base with answering system



Find: Press to page all system handsets.
Volume up/down: Press to adjust the volume during playback and call screening.
Play/Stop: Press to play message or press to stop message playback.
Repeat: Press to repeat a message or press twice to play previous message.
Message Indicator: On when Answering System on. Flashes when new message. Fast Blink when Message Full.
Forward: Press to skip to the next message.
Delete: Press to delete the message during playback or press and hold to delete all old message.
Answer on/off: Press to turn the answering system on and off
Memo rec.: Press and hold to record memo.
Annc. rec.: Press and hold to record the outgoing message.

Handset layout



OK: Press to select an item, or save an entry or settings.
Delete: Press to delete the last input number or letter. While in a menu, press to return the upper level without making changes.
Up/CID: Press to review the call log when the telephone is not in use. While in a menu, press to scroll up. During a call, press to increase the listening volume.
Down/Phonebook: Press to review the phonebook when the telephone is not in use. While in a menu, press to scroll down. During a call, press to decrease the listening volume.
Talk/Flash: Press to make or answer a call. During a call, press to answer an incoming call when you receive a call waiting alert.
Speakerphone: Press to make or answer a call though speakerphone. During a call, press to switch between speakerphone and handset
End/Power off: During a call, press to hang up. During a programming, press to exit without making changes. Press and hold to power off the handset
Menu: Press to show menu.
Redial: Press to review redial list.
\*/Keylock: Press and hold to set the keylock (Keylock will de-activate when handset sit on the charge cradle)
#/Ringer off: Press and hold to set the Ringer off when the telephone is not in use.

Display

Handset Display Items

Item	Meaning
[Signal strength icon]	• Turn on when base unit in range • Blinking when base out of range
[Book icon]	• Turn on during review the phone book
[Battery icon]	• Battery Level
[Call icon]	• Blinking when there is incoming call • Steady on during a call
[Envelope icon]	• Blinking when there is Voice mail
[Bell icon]	• Turn on when Alarm set
[Music icon]	• Turn on when ringer off set
[Face icon]	• Turn on when answering machine on • Blinking when there is new message
[Log icon]	• Turn on during review the call log and there is old records in call log

Initial settings

Display language

You can select change the display language.

1. [ menu ]
2. [ ]/[ ]/[ ]: "SETTINGS" → [OK]
3. [ ]/[ ]/[ ]: "LANGUAGE" → [OK]
4. [ ]/[ ]/[ ]: Select the desired setting
5. [ OK ] → [ ]

Dialing mode

If you cannot make calls, change this setting according to your telephone line service. The default setting is "TONE"

1. [ menu ]
2. [ ]/[ ]/[ ]: "ADVANCED SET" → [OK]
3. [ ]/[ ]/[ ]: "DIAL MODE" → [OK]
4. [ ]/[ ]/[ ]: Select the desired setting
5. [ OK ] → [ ]

Date and time

1. [ menu ]
2. [ ]/[ ]/[ ]: "CLOCK&ALARM" → [OK]
3. [ ]/[ ]/[ ]: "DATE & TIME" → [OK]
4. Enter the current year, month and date by selecting 2 digits. Example: May 16, 2010 Press [1][0][0][5][1][6]
5. Enter the current hour and minutes by selecting 2 digits. Example: 9:30 am Press [0][9][3][0]
- Press [ ]/[ ]/[ ]: Select am or pm
6. [ OK ] → [ ]
- Note: You can change date and time display format

Date format

1. [ menu ]
2. [ ]/[ ]/[ ]: "CLOCK&ALARM" → [OK]
3. [ ]/[ ]/[ ]: "SET FORMAT" → [OK]
4. [ ]/[ ]/[ ]: "DATE FORMAT" → [OK]
5. [ ]/[ ]/[ ]: Select the desired setting (MM/DD OR DD/MM)
6. [ OK ] → [ ]

Time format

1. [ menu ]
2. [ ]/[ ]/[ ]: "CLOCK&ALARM" → [OK]
3. [ ]/[ ]/[ ]: "SET FORMAT" → [OK]
4. [ ]/[ ]/[ ]: "TIME FORMAT" → [OK]
5. [ ]/[ ]/[ ]: Select the desired setting (12 HOURS OR 24 HOURS)
6. [ OK ] → [ ]

Ringer Volume

1. [ menu ]
2. [ ]/[ ]/[ ]: "SETTINGS" → [OK]
3. [ ]/[ ]/[ ]: "HANDSET TONE" → [OK]
4. [ ]/[ ]/[ ]: "RINGER VOLUME" → [OK]
5. [ ]/[ ]/[ ]: Select the desired setting (VOLUME 1 to 4 and OFF)
6. [ OK ] → [ ]
- Note: If Ringer off is selected, LCD will show "RINGER OFF" and [ ] will turn on.

Ringer Tone

1. [ menu ]
2. [ ]/[ ]/[ ]: "SETTINGS" → [OK]
3. [ ]/[ ]/[ ]: "HANDSET TONE" → [OK]
4. [ ]/[ ]/[ ]: "RINGER TONE" → [OK]
5. [ ]/[ ]/[ ]: Select the desired setting (MELODY 1 to 10)
6. [ OK ] → [ ]
- Note: If Ringer off is selected, there is no preview during the ringer melody selection.

Answering System Setup (Available for 28522)

This section shows you how to set up your answering system to receive incoming calls. Before you begin the set up process, you must turn on the answering system.

- Press the [ ] on the base to turn the answering system on and off.

The MESSAGES indicator lights when the answering system is on. The indicator blinks when you have new messages.

Base Volume

Use the [ ]/[ ] buttons to adjust speaker volume on the base to a comfortable level. Level 1 is the minimum speaker volume and Level 8 is the maximum.

Outgoing Announcement

When the unit answers a call, an outgoing message is played to callers. You can use either:  
- your own outgoing message  
- a pre-recorded outgoing message

Recording Outgoing Announcement

You can record the outgoing message (OGM) through the base and handset microphone.  
Record at Base:  
1. Press and hold [ ], then  
2. After a beep sounds, you should move 9 inches from the base microphone and speak clearly into the base microphone. (2 minutes max)  
3. Release [ ] to stop recording

Record at Handset:

1. [ menu ]
2. [ ]/[ ]/[ ]: "ANSWERER" → [OK]
3. [ ]/[ ]/[ ]: "RECORD OGM" → [OK]
4. [ ]/[ ]/[ ]: "RECORD MSGS" OR "ANSWER ONLY" → [OK]
5. [ ]/[ ]/[ ]: "RECORD OGM" → [OK]
6. After a beep sounds, hold the handset about 6 inches away and speak clearly into the microphone (2 minutes max.)
7. Press [ OK ] to stop recording
8. [ ]

Using a pre-recorded Outgoing Announcement

If you erase or do not record your own outgoing message, the unit plays a pre-recorded message asking callers to leave a message.

Resetting to a pre-recorded Outgoing Announcement

If you want to use a pre-recorded outgoing message once you record your own outgoing message, you need to erase your own outgoing message.

1. [ menu ]
2. [ ]/[ ]/[ ]: "ANSWERER" → [OK]
3. [ ]/[ ]/[ ]: "RECORD OGM" → [OK]
4. [ ]/[ ]/[ ]: "RECORD MSGS" OR "ANSWER ONLY" → [OK]
5. [ ]/[ ]/[ ]: "DELETE" → [OK]
6. The handset shall play back the pre-recorded outgoing message
7. [ ]

Making calls

1. Lift the handset and dial the phone number  
To correct a digit, press [ ] or [ ]
2. Press [ ] or [ ]
3. When you finish talking, press [ ] or place the handset on the base unit or charger.

Adjusting the receiver volume

Press [ ] or [ ] repeatedly while talking

Answering calls

When a call is being received, the LCD and keypad backlight flash rapidly

1. Lift the handset and press [ ] or [ ] when the unit rings
2. When you finish talking, press [ ] or place the handset on the base unit or charger

Conference

To join the conversation, press [ ] or [ ] when other handset is on an outside call.

Making a call using the redial list

The last 5 number dialed are stored in the redial list (each 24 digits max)

1. Press [ ]
2. press [ ]/[ ]/[ ]: Select the desired phone number
3. Press [ ] or [ ]

Erasing a number in redial list

1. Press [ ]
2. Press [ ]/[ ]/[ ]: Select the desired phone number → [ menu ]
3. [ ]/[ ]/[ ]: "DELETE" or "DELETE ALL" → [OK]
4. Press [ OK ] to confirm

Other Feature during a call

Mute

While mute is turned on, you can hear the other party, but the other party cannot hear you.

1. Press [ ] during the call
2. To return the call, Press [ ] again

Note: LCD will show "MUTE ON" when mute feature activated

For Call waiting or Call Waiting Caller ID service subscriber

To use call waiting, you must subscribe to call waiting from your service provider. This feature allows you to receive calls while you are already talking on the phone, you will hear a call waiting tone. If you subscribe to both Caller ID and Call Waiting with Caller ID services, the 2nd caller's information is displayed after you hear the call waiting tone on the handset.

1. Press [ ] to answer the 2nd call
2. To switch between calls, press [ ]

Pause (for PBX/long distance service users)

A pause is sometimes required when making calls using a PBX or long distance service. When storing a calling card access number and/or PIN in the phonebook, a pause is also needed.

Example: If you need to dial the line access number "9" when making outside calls with PBX:

1. Press [ 9 ], then long press [ # ]
2. Dial the phone number and press [ ] or [ ]

Note: A 3 second pause is inserted each time, repeat as needed to create longer pauses

Phonebook

Adding record

1. [ menu ]
2. [ ]/[ ]/[ ]: "PHONEBOOK" → [OK]
3. [ ]/[ ]/[ ]: "ADD RECORDS" → [OK]
4. Enter the name (max. 12 character) → [OK]
5. Enter the number (max. 24 digits) → [OK]
6. [ ]

Character Table for the entering names

Key	Character
[1]	Space 1 < > *
[2]	A B C 2
[3]	D E F 3
[4]	G H I 4
[5]	J L K 5
[6]	M N O 6
[7]	P Q R S 7
[8]	T U V 8
[9]	W X Y Z 9
[0]	0 - / \ # +

Correct the mistake

Press [ ] to delete the characters or numbers

View a phonebook record

1. Press [ ] when handset not in use.
2. Press [ ]/[ ]/[ ] to select desired record
3. Press [ OK ] to view the name and number

Make a call from phonebook

1. [ ]
2. [ ]/[ ]/[ ]: Select the desired record
3. [ ] or [ ]

Searching by first character

1. [ ]
2. Press [1] - [9] which contains the character you are searching for
3. [ ]/[ ]/[ ]: Select the desired record if necessary
4. [ ] or [ ]

Editing entries

1. Find the desired record → [ menu ]
2. [ ]/[ ]/[ ]: "EDIT RECORDS"
3. Edit the name if necessary → [ OK ]
4. Edit the number if necessary → [ OK ]
5. [ ]

Erasing entries

1. Find the desired record → [ menu ]
2. [ ]/[ ]/[ ]: "DELETE" or "DELETE ALL" → [ OK ]
3. Press [ OK ] to confirm
4. [ ]

Programming the Telephone

Standby Screen



Programmable settings

You can customize the unit by programming the following features using the handset.

Programming by scrolling through the display menus

1. [ menu ]
2. Press [ ] or [ ] to select the desired main menu. → [ OK ]
3. Press [ ] or [ ] to select the desired item in sub-menu 1. → [ OK ]
  - In some cases, you may need to select from sub-menu 2. → [ OK ]
4. Press [ ] or [ ] to select the desired setting. → [ OK ]
  - This step may vary depending on the feature being programmed
  - To exit the operation, press [ ]



Main Menu	Sub -menu 1	Sub -menu 2
PHONEBOOK	ADD RECORDS	
	VIEW RECORDS	
	EDIT RECORDS	
	DELETE	
CLOCK&ALARM	DELETE ALL	
	DATE & TIME	
	SET FORMAT	TIME FORMAT
	ALARM	DATE FORMAT
SETTINGS	ALARM MELODY	
	HANDSET NAME	
	HANDSET TONES	RING VOLUME RINGER TONE KEY TONE
	LANGUAGE	
ADVANCED SET	CHANGE PIN	
	REGISTRATION	
	UNREGISTER	
	RESET	
ANSWERER (28522)	AREA CODE	
	DIAL MODE	
	PLAY	
	DELETE ALL	
ANSWERER (28522)	ANSW. ON/OFF	
	RECORD OGM	RECORD MSGS ANSWER ONLY
	ANSWER MODE	
	SETTINGS	RING DELAY REMOTE ACC. LANGUAGE

### Alarm

An alarm sounds at the set time for 1 minute once or daily. Alarm can be set for each handset.

**Important:** Set the date and time beforehand

- [ menu ]
- press [ ]/[ ] to select "CLOCK&ALARM". →[OK]
- Press [ ] or [ ] to select "ALARM". → [OK]
- Press [ ]/[ ] to select the desired alarm option. →[OK]
- OFF: Turns alarm off.(Go to step 6)  
ON ONCE: An alarm sounds once at the set time  
ON DAILY: An alarm sounds daily at the set time.
- Set the desired time.
- Alarm set (or turned off) and press [ ] return to idle

### Alarm melody:

You can select from 3 alarm melody

- [ menu ]
- press [ ]/[ ] to select "CLOCK&ALARM". → [OK]
- Press [ ] or [ ] to select "ALARM MELODY". → [OK]
- Press [ ]/[ ] to select the desired alarm melody. → [OK]
- Alarm melody set and press [ ] return to idle

### PIN (Personal Identification Number)

**Important:** If you change the PIN, please make note of your new PIN. The unit will not reveal the PIN to you. If you forget your PIN, please reset your phone. The default PIN is 0000.

- To change PIN:
- Press [ menu ], then
  - Press [ ]/[ ] to select "ADVANCED SET" and press [OK], then

- Press [ ]/[ ] to select "CHANGE PIN" and press [OK], then
- Input the old 4 digits PIN (default: 0000) and press [OK], then
- Input the new PIN and press [OK], then
- A beep sound emit after PIN changed

### Registering a handset

#### Additional handset

The base unit of this telephone can support up to a total of 4 cordless handsets. The handsets that ship with your main base are pre-registered in the factory. To add or re-register a handset:

**Handset:**

- [ menu ]
- [ ]/[ ]: "ADVANCED SET" → [ OK ]
- [ ]/[ ]: "REGISTRATION" → [ OK ]

4. Enter you PIN (default PIN: 0000) and press [OK], then
5. Handset will show "WAITING"

**Base:**

6. Press and hold the [ ] for 5 seconds. For 28522, the base LED will blink rapidly.

**Handset:**

7. Handset will have a long beep when success register

**Note:** An error tone will emit when the registration not success

**Important:**

The unit shall able to register with 28502xxx-A only

### Deregistering a handset

- [ menu ]
- [ ]/[ ]: "ADVANCED SET" → [ OK ]
- [ ]/[ ]: "UNREGISTER" → [ OK ]
4. Enter you PIN (default PIN: 0000) → [ OK ]

5. [ ]/[ ]: Select the desired handset → [ OK ]

6. [ ]

### Using Caller ID service

**IMPORTANT:** In order to use this unit's Caller ID features, you must subscribe to either the standard Name/Number Caller ID Service or Call Waiting Caller ID Service. To know who is calling while you are on the phone, you must subscribe to Call Waiting Caller ID Service.

This unit receives and displays information transmitted by your local phone company. This information can include the phone number, date, and time; or the name, phone number, date, and time.

### Receiving CID Records

Caller ID records are stored in the order that they are received.

### Storing CID Records (In CID Memory)

If you are not at home or cannot answer, your telephone's Caller ID memory stores the data for the 10 most recent calls. When the 11th call is received, the oldest Caller ID record (1st call) is automatically deleted.

### Reviewing CID Records and call back

As calls are received and stored, the display is updated to let you know how many calls have been received. To scroll CID records:

- [ ]
- Press [ ] to search from the most recent call, or [ ] to search from the oldest call.
- To Call back, press [ ]
- To Exit, press [ ] return to idle

### Editing a caller's phone number calling back

You can edit a phone number in the caller list by removing its area code and/or the long distance code "1"

- [ ]
- Press [ ]/[ ] to select "ANSWERER" → [ OK ]
3. [ ]/[ ] to select "ANSWER MODE" → [ OK ]
4. Press [ ]/[ ] to select the desired alarm melody. → [OK]
5. Alarm melody set and press [ ] return to idle

**Editing a caller's phone number calling back**

You can edit a phone number in the caller list by removing its area code and/or the long distance code "1"

- [ ]
- Press [ ]/[ ] to select the desired record → [ OK ]
3. If the desired record is a name, Press [ OK ] to show the number
4. [ ]

**OR**

You can edit the number you want

- [ ]
- Press [ ]/[ ] to select the desired record → [ menu ]

3. Press [ ]/[ ] to select "EDIT RECORDS" → [ OK ]

4. Enter the number if necessary

5. Press [ OK ] to save the new number in the record or press [ ] dial out the number

### Delete a CID record

- [ ]
- [ ]/[ ]: Select the desired record → [ menu ]
- [ ]/[ ]: "DELETE" or "DELETE ALL" → [ OK ]

4. Press [ OK ] to confirm

5. [ ]

### Store a CID record

- [ ]
- [ ]/[ ]: Select the desired record → [ menu ]
- [ ]/[ ]: "SAVE NUMBER" → [ OK ]

4. Enter the name and number → [ OK ]

5. [ ]

### Answering system (Available for 28522)

The answering system can answer and record calls for you when you are unavailable to answer the phone.

**Important:** Only 1 person can access the answering system via handset or base at a time. When callers leave messages, the unit records the day and time of each message. Make sure the date and time have been set correctly.

### Recording capacity (including the outgoing message)

The total recording capacity is about 12 minutes. A maximum of 59 messages can be record

### Answer mode

There are two answering mode. "ANSWERER" mode means the answering system will record message when no one pick up the call. "ANSWER ONLY" mode means the answer system will play the outgoing message only but not record the message.

**Important:** Only 1 person can access the answering system via handset or base at a time. When callers leave messages, the unit records the day and time of each message. Make sure the date and time have been set correctly.

### Recording capacity (including the outgoing message)

The total recording capacity is about 12 minutes. A maximum of 59 messages can be record

### Answer mode

There are two answering mode. "ANSWERER" mode means the answering system will record message when no one pick up the call. "ANSWER ONLY" mode means the answer system will play the outgoing message only but not record the message.

**Important:** Only 1 person can access the answering system via handset or base at a time. When callers leave messages, the unit records the day and time of each message. Make sure the date and time have been set correctly.

### Recording capacity (including the outgoing message)

The total recording capacity is about 12 minutes. A maximum of 59 messages can be record

### Answer mode

There are two answering mode. "ANSWERER" mode means the answering system will record message when no one pick up the call. "ANSWER ONLY" mode means the answer system will play the outgoing message only but not record the message.

### Recording capacity (including the outgoing message)

The total recording capacity is about 12 minutes. A maximum of 59 messages can be record

### Answer mode

There are two answering mode. "ANSWERER" mode means the answering system will record message when no one pick up the call. "ANSWER ONLY" mode means the answer system will play the outgoing message only but not record the message.

### Recording capacity (including the outgoing message)

The total recording capacity is about 12 minutes. A maximum of 59 messages can be record

### Answer mode

There are two answering mode. "ANSWERER" mode means the answering system will record message when no one pick up the call. "ANSWER ONLY" mode means the answer system will play the outgoing message only but not record the message.

### Recording capacity (including the outgoing message)

The total recording capacity is about 12 minutes. A maximum of 59 messages can be record

### Answer mode

There are two answering mode. "ANSWERER" mode means the answering system will record message when no one pick up the call. "ANSWER ONLY" mode means the answer system will play the outgoing message only but not record the message.

### Recording capacity (including the outgoing message)

The total recording capacity is about 12 minutes. A maximum of 59 messages can be record

### Answer mode

There are two answering mode. "ANSWERER" mode means the answering system will record message when no one pick up the call. "ANSWER ONLY" mode means the answer system will play the outgoing message only but not record the message.

**Note:**

Turn on and off will not change answer mode of the answering system

When the answering system is turned on, the LED on the base light up

### Call screening

1. When the answering system answers the call, listen while the caller leaves a message (to determine who is calling).

2. To speak to the caller, press the [ ]

The answering system automatically stops recording when you activate the handset or pick up an extension phone.

**Note:**

To turn off the call screening, Press [ ]/[ ] to set the volume off

### Playback the messages using the base unit

When the new message have been recorded, the message indicator on the base unit flashes

Press [ ]

• If new messages have been recorded, the base plays new messages

### Operating the answering system during playback

Key	Operation
[  ]/[  ]	Adjust the speaker volume
[  ]	Play or Stop message
[  ]/[  ]	Repeat message
[  ]/[  ]	Skip message
[  ]	Erase currently playing message

### Erasing all messages

Long Press [ ] while the unit is not in use

**Important:** If you select Toll Saver (TS) the unit answers after the 3rd ring if there are NEW messages, OR the unit answers after the 5th ring if there are NO new messages. This allows user to access their answerer from another location and then hang up after 4 rings to avoid long distance charges.

**Voice mail service**

The [ ] on LCD flash when you receive a new message from your service provider.

### Intercom

Intercom calls can be made between handsets

**Note:** If you receive an outside call while talking on the intercom, you hear beep.

To answer the call with the handset, long press [ ] to switch the outside call and intercom

While paging a handset, the paged handset beeps for 1 minute.

### Making an intercom call

1. [ int ]

2. Select the handset you want to page by pressing the desired handset number ([1] -[4]) or you can page all handset by pressing [ ]

3. Press [ ]

4. Press [ OK ] to confirm

5. [ ]

### Answering an intercom call

1. Press [ ] to answer the page

2. When you finish talking, press [ ]

### Handset locator

You can locate a misplaced handset by paging it.

1. Base unit: [ ]

All register handsets beep for 1 minute.

2. To stop paging:

Base Unit: Press [ ]

Handset: Press [ ]

### Transferring calls

Outside calls can be transferred or a conference call with an outside party can be made between 2 handsets.

1. During outside call, press [ int ]

2. Select the handset you want to page by pressing the desired handset number ([1] -[4]) or you can page all handset by pressing [ ]

3. Press [ ]

4. The call will transfer to the paged handset

- For conference call

5. During the intercom, long press [ int ]

6. LCD will show "CONFERENCE"

### Remote commands

You can press dial keys to access certain answering system functions.

Keys	Description
[1]	Skip to the previous message
[2]	Play the message
[3]	Skip to the next message
[6]	Delete the playing message
[7]	Turn on the answering machine
[8]	Stop message playback
[9]	Turn on/off the answering machine

### Answering system settings

Number of rings before the unit answers a call

You can select the number of rings you want the phone to ring before the answering system answers a call.

1. [ menu ]

2. [ ]/[ ]: "ANSWERER" → [ OK ]

3. [ ]/[ ]: "SETTINGS" → [ OK ]

4. [ ]/[ ]: "RING DELAY" → [ OK ]

5. [ ]/[ ]: Select the desired setting → [ OK ]

6. [ ]

### General product care

To keep your unit working and looking good, follow these guidelines:

- Avoid dropping the handset, as well as other rough treatment to the phone.
- Clean the phone with a soft cloth.
- Never use strong cleaning agents, paint thinner, abrasive powder, alcohol, or other chemical products to clean the unit. Doing so will damage the finish.
- Retain the original packaging in case you need to ship the phone at a later date.
- Periodically clean the charge contacts on the handset and base with a clean pencil eraser.

**Battery Safety Precautions**

- Do not burn, disassemble, mutilate, or puncture. Like other batteries of this type, toxic materials could be released which can cause injury.
- To reduce the risk of fire or personal injury, use only the battery listed in the User's Guide.
- Keep batteries out of the reach of children.
- Remove batteries if storing over 30 day

### Changing the battery

**CAUTION:** To reduce the risk of fire or personal injury, use only the CCT Tech Global Limited approved model H-AAAS50BX2 OR

ZSN-AAAS5H-S-J1 Nickel-metal Hydride battery (Ni-MH), which is compatible with this unit.

1. Make sure the telephone is **OFF** (not in TALK mode) before you replace the battery.

2. Remove the battery compartment door.

3. Disconnect the cord attached to the battery pack and remove the battery pack from the handset.

4. Insert the new battery pack and connect the cord to the jack inside the battery compartment.

5. Put the battery compartment door back on.

6. Place handset in the base or handset charge cradle to charge. **Allow the handset battery to properly charge (for 16 hours) prior to first use or when you install a new battery pack. If you do not properly charge the phone, battery performance will be compromised.**

### Troubleshooting guide

#### Telephone general use

Problem	Cause/solution
The handset does not turn on even after installing battery pack	- Place the handset on the base unit or charger to turn on the handset.
The unit does not work	- Make sure the battery pack is installed correctly. - Fully charge the battery. Check the connections. (for 16 hours) - Unplug the base unit's AC adaptor to reset the unit. Reconnect the adaptor and try again. - The handset has not been registered to the base unit. Register the handset.
Cannot hear a dial tone	- The base unit's AC adaptor or telephone line cord is not connected. Check the connections. - Disconnect the base unit from the telephone line and connect the line to a known working telephone. If the working telephone operates properly, contact our service personnel to have the unit repaired. If the working telephone does not operate properly, contact your service provider/telephone company. The ringer volume is turned off. Adjust the ringer volume.
Handset does not ring	- The handset may be out of range of the base. - Move closer to the base. - The handset may be out of range of the base. - Move closer to base.
You experience static, noise, or fading in and out	- You are using the handset or base unit in an area with high electrical interference. Reposition the base unit and use the handset away from sources of interference.

#### Answering System (28522 only)

Problem	Cause/solution
The unit does not record new message	- The answering system is turned off. Turn it on. - The message memory is full. Erase unnecessary messages.
Cannot operate the answering system	- Someone is using the unit. Wait for other user finish. - A caller is leaving a message. Wait for the caller finish. - The handset is too far from the base unit. Move closer. - The remote access is deactivate, activate the remote access.
Cannot operate the answering system remotely.	- You are entering the wrong remote access code. - You must use a tone-dial phone. This phone does not support pulse (rotary) dialing

### Changing the battery

**CAUTION:** To reduce the risk of fire or personal injury, use only the CCT Tech Global Limited approved model H-AAAS50BX2 OR

ZSN-AAAS5H-S-J1 Nickel-metal Hydride battery (Ni-MH), which is compatible with this unit.

1. Make sure the telephone is **OFF** (not in TALK mode) before you replace the battery.

2. Remove the battery compartment door.

3. Disconnect the cord attached to the battery pack and remove the battery pack from the handset.

4. Insert the new battery pack and connect the cord to the jack inside the battery compartment.

5. Put the battery compartment door back on.

6. Place handset in the base or handset charge cradle to charge. **Allow the handset battery to properly charge (for 16 hours) prior to first use or when you install a new battery pack. If you do not properly charge the phone, battery performance will be compromised.**

### Battery Safety Precautions

- Do not burn, disassemble, mutilate, or puncture. Like other batteries of this type, toxic materials could be released which can cause injury.
- To reduce the risk of fire or personal injury, use only the battery listed in the User's Guide.
- Keep batteries out of the reach of children.
- Remove batteries if storing over 30 day

### General product care

To keep your unit working and looking good, follow these guidelines: