

 LAKELAND

## USER MANUAL



**The Lakeland Guarantee....**

is probably the simplest guarantee in the world!  
If you are not satisfied at any time, you receive your money back!  
This is our promise.

**Lakeland**

Alexandra Buildings, Windermere, Cumbria LA23 1BQ  
Tel: 015394 88100 Web: [www.lakeland.co.uk](http://www.lakeland.co.uk)

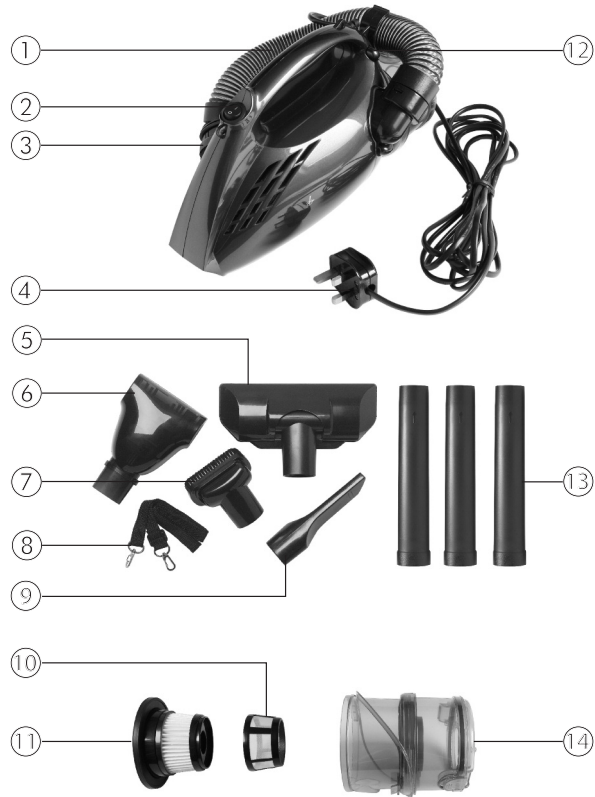
## HAND-HELD TURBO VAC

Model: 22518

Helpline No: 015394 88100

## INTRODUCTION

Thank you for choosing the Lakeland Hand-Held Turbo Vac. Delivering powerful pick-up, this bagless vacuum cleaner gives impressive results around the home – on carpets, rugs, stairs, hard floors, upholstery, skirting boards and more – thanks to a range of accessories. The turbo vac also has a HEPA filter to remove airborne impurities. Please take a few moments to read these instructions before using the turbo vac for the first time, and keep them in a safe place for future reference.



## FEATURES

- |                         |                                   |
|-------------------------|-----------------------------------|
| 1. Flexible hose        | 8. Detachable shoulder strap      |
| 2. On/off switch        | 9. Crevice tool                   |
| 3. Small brush tool     | 10. Nylon mesh filter             |
| 4. 5m power cord        | 11. HEPA filter                   |
| 5. Floor head           | 12. Dust collector release button |
| 6. Rotating turbo brush | 13. Extension kit                 |
| 7. Large brush tool     | 14. Dust collector                |

Operating voltage: 220-240V~50-60Hz

Power: 1000w

## IMPORTANT SAFEGUARDS

When using this vacuum cleaner, please follow these basic safety precautions.

1. Please read all instructions before using, and keep in a safe place.
2. Make sure your electricity supply matches the voltage of the appliance.
3. This vacuum cleaner is for household use only. It is not suitable for commercial use, or for use outdoors. It must only be used for its intended purpose.
4. This vacuum cleaner is not a toy. Children should be supervised to ensure they do not play with it. Pay close attention when the vacuum cleaner is used by or near children.
5. Do not leave the vacuum cleaner unattended when plugged in or switched on.
6. To unplug the vacuum cleaner, grasp the plug, not the power cord. Switch off before unplugging.
7. Never use the power cord to pull or carry the vacuum cleaner. Keep the cord away from hot surfaces and sharp edges. Avoid vacuuming over the cord or letting it get squashed e.g. under a door.
8. To avoid electric shock, do not let the vacuum cleaner, power cord or plug get wet. Please do not operate with wet hands.
9. The vacuum cleaner must only be used on dry, indoor surfaces, never on wet or outdoor surfaces. Store it indoors, out of children's reach.
10. Never use the vacuum cleaner to pick up inflammable liquids such as petrol or solvent. Never vacuum liquids, broken glass, sharp objects or burning/smoking items such as hot ash.
11. Take extra care when vacuuming stairs.
12. Please do not point the vacuum cleaner at people or pets during use. Keep your hair, clothing, face and body well away from the suction opening, hose connector and any moving parts.
13. Do not place any objects into the suction opening or hose connector. Keep them free from dust, lint, hair and anything that may block the airflow.
14. Make sure the filters are in place before using the vacuum cleaner.
15. Using attachments not supplied by the manufacturer may cause electric shock, fire or injury.
16. Always switch off and unplug the vacuum cleaner before adding or removing parts, emptying the dust collector, cleaning the filters, removing blockages, and after use.

17. The vacuum cleaner is not intended for use by children or infirm people unless they have been adequately supervised by a responsible person to ensure they can use it safely.
18. Do not use the vacuum cleaner if the power cord or plug show any signs of damage, or if the appliance has been dropped, damaged, left outdoors, allowed to get wet, or is working incorrectly. Call the helpline on 015394 88100 to arrange a replacement. Never try to repair it yourself as this may cause electric shock.

### BEFORE USING FOR THE FIRST TIME

Unpack the turbo vac carefully. Remove any packaging and check that you have all the correct parts.

Make sure the turbo vac is switched off – with the on/off button pressed to 'O' – and unplugged. Press the dust collector release button. Lift off the dust collector and check the filters are installed. Click the dust collector back into place.



Check the flexible hose is properly connected to the turbo vac. The hose has a small brush tool on the end; this should be firmly pushed onto the hose connector on the side of the turbo vac.



### USING YOUR TURBO VAC

This hand-held turbo vac is much smaller and lighter than traditional vacuum cleaners. It reduces your effort when cleaning all around the home, yet delivers impressive suction.

1. Before vacuuming, make sure the turbo vac is switched off – with the on/off button pressed to 'O' – and unplugged.
2. Select a cleaning accessory. To suit the task in hand, these can be attached in three different ways:
  - to the turbo vac body
  - to the flexible hose
  - to the extension kit.

Please see ATTACHING THE ACCESSORIES.

3. Plug into the mains socket. Holding the turbo vac firmly by its handle, press the on/off switch to 'I' to start vacuuming.

CAUTION: the turbo vac is very powerful. To prevent injury, please grip the handle tightly and do not let go during use.

4. To stop vacuuming, press the on/off switch to 'O'. Unplug from the socket.

### ATTACHING THE ACCESSORIES

The turbo vac is designed to be versatile. All the accessories (except the small brush tool) can be attached in three different ways, to suit a variety of cleaning tasks around the home.

PLEASE NOTE: the small brush tool is permanently attached to the flexible hose. It cannot be used with the extension kit.

#### 1. Attaching to the turbo vac body

This lets you keep one hand free whilst vacuuming. Insert your chosen accessory straight into the suction opening on the front of the turbo vac.



#### 2. Attaching to the flexible hose

This gives more freedom of movement, and is helpful on staircases or upholstery. Firstly, free the hose by pulling the small brush tool off the hose connector on the side of the turbo vac. Then attach your chosen accessory to the hose by inserting it into the round brush tool.



### 3. **Attaching to the extension kit**

This enables you to vacuum carpets from a standing position, or to extend your reach when dusting etc. Firstly, assemble the extension kit by pushing the three sections together to form a tube. Then insert the narrow end of the tube into the suction opening on the front of the turbo vac. Attach your chosen cleaning accessory to the other end of the tube.



CAUTION: remember to switch off and unplug the turbo vac before adding or removing accessories.

### **CHOOSING THE RIGHT ACCESSORY**

#### **Small brush tool**

This round, bristled brush is helpful for dusting skirting boards, window frames etc. It is permanently attached to the flexible hose. To use it, pull the brush off the hose connector on the side of the turbo vac. After use, push the brush back onto the hose connector.

#### **Floor head**

With bristles and easy-glide wheels, the floor head is suitable for use on carpets, rugs or hard floors.

#### **Rotating turbo brush**

This powerful brush rotates at high speed to clean upholstery and remove pet hairs from carpets, rugs, sofas etc.

CAUTION: to prevent injury, please keep your hands well away from the turbo brush during use.

#### **Crevice tool**

Designed for awkward nooks and crannies, the crevice tool cleans right up to the edges of carpets and stairs, and down the sides of chairs and sofas.

#### **Square brush tool**

This bristled brush is good for dusting larger areas.

### **USING THE SHOULDER STRAP**

You may find it helpful to carry the turbo vac over your shoulder when vacuuming. The shoulder strap is easily clipped onto the turbo vac with two hooks, and can be unclipped when not needed.

CAUTION: during use, the turbo vac blows out warm/hot air. Please hold the turbo vac slightly away from your body to prevent any discomfort.



### **EMPTYING THE DUST COLLECTOR**

The dust collector is transparent so that you can see at a glance when it needs emptying. For optimum pick-up power, empty the container regularly, even if it does not look full.

1. Make sure the turbo vac is switched off and unplugged.
2. Hold the turbo vac over a dustbin. Press the catch on the dust collector to open the lid, and empty the contents.

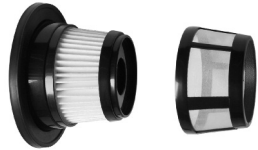


- To dislodge any stubborn dust, you can unscrew the top part of the dust collector from the turbo vac. Tap it against a dustbin until empty, or wipe out with a cloth. It must be thoroughly dry before replacing.

### CLEANING THE FILTERS

To ensure maximum suction and performance, we recommend cleaning the HEPA filter and nylon mesh filter regularly. If pick-up power is reduced, always clean the filters as they may be blocked.

- Make sure the turbo vac is switched off and unplugged.
- Press the dust collector release button. Remove the dust collector.
- Lift out the filters, and pull the mesh filter off the HEPA filter. Tap both filters gently against the side of a dustbin to remove any particles. Use a soft brush to dislodge any stubborn dust.



- The filters may also be rinsed in lukewarm water. Allow to air-dry thoroughly before replacing them.
- Push the mesh filter back onto the HEPA filter. Place the filters back inside the dust collector, and click this back into place on the turbo vac.

**CAUTION:** never use the turbo vac without the filters in place.

### CLEANING THE ROTATING TURBO BRUSH

Occasionally the rotating brush may become blocked by threads, hair or debris. Clearing it is very easy.

- Make sure the turbo vac is switched off and unplugged, then remove the turbo brush.
- Remove the locking ring from the turbo brush by pushing both ends with your thumbs.



- Lift off the base of the turbo brush. Carefully snip away threads or hair with scissors, and use a brush to dislodge any particles.
- Replace the base of the turbo brush; it should click into place. Push the locking ring back into position.

### CLEANING THE TURBO VAC BODY

The outside of the turbo vac may be wiped clean with a soft, dry cloth. Please do not use water, spray polish, aggressive cleaners or scourers. Never immerse the turbo vac in water or any other liquid.

### TROUBLESHOOTING

| PROBLEM                           | POSSIBLE REASON                                | POSSIBLE SOLUTION   |
|-----------------------------------|--|---|
| <b>Turbo vac will not work</b>    | Power cord not fully plugged into mains socket | Push plug firmly into mains socket  |
|                                   | Mains socket not switched on                   | Switch on mains socket  |
|                                   | No electricity to mains socket                 | Ask a qualified electrician to check mains socket                             |
|                                   | Turbo vac has overheated                       | Let vac rest for approx. 40 minutes. If still not working, call the helpline. |
| <b>No suction or poor pick-up</b> | Dust collector is full                         | Empty dust collector  |
|                                   | Turbo vac is blocked                           | Check suction opening and cleaning accessories for blockages                  |
|                                   | Filters are clogged up                         | Remove filters and clean  |
| <b>Dust escaping</b>              | Dust collector is full                         | Empty dust collector  |
|                                   | Dust collector or filters not fitted correctly | Replace dust collector or filters correctly                                   |
|                                   | Dust collector or filters damaged              | Call the helpline   |

In the unlikely event that your turbo vac still does not work, please do not attempt to repair it yourself. Call the helpline on 015394 88100.

### RECYCLING YOUR ELECTRICALS

Along with many other high street retailers, Lakeland has joined a scheme whereby customers can take their unwanted electricals to recycling points set up around the country. Visit [www.recycle-more.co.uk](http://www.recycle-more.co.uk) to find your nearest recycling point. The vacuum cleaner must not be disposed of with ordinary household waste.



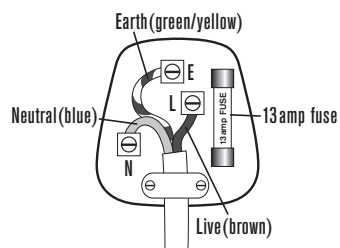
## ELECTRICAL CONNECTIONS

### THIS APPLIANCE MUST BE EARTHED

This appliance is fitted with a fused three-pin plug to BS1363 which is suitable for use in all homes fitted with sockets to current specifications. If the fitted plug is not suitable for your socket outlets, it should be cut off and carefully disposed of. To avoid an electric shock, do not insert the discarded plug into a socket.

#### Fitting a new plug

If for any reason you need to fit a new plug, the flexible mains lead must be connected as shown here. The wires in the mains lead fitted to this appliance are coloured in accordance with the following code:



**Connect BLUE to Neutral (N)**

**Connect GREEN & YELLOW to Earth (E)**

**Connect BROWN to Live (L)**

**13 amp fuse to be used**

If the colours of the wires in the mains lead of this appliance do not correspond with the coloured markings identifying the terminals in your plug, proceed as follows. The wire which is coloured green and yellow **MUST** be connected to the terminal which is marked with the letter E (Earth) or coloured green. The wire which is coloured blue **MUST** be connected to the terminal which is marked with the letter N (Neutral) or coloured black. The wire which is coloured brown **MUST** be connected to the terminal which is marked with the letter L (Live) or coloured red.

Before refitting the plug cover, check that there are no cut or stray strands of wire inside the plug. Use a 13 amp BS1362 fuse. Only BSI or ASTA approved fuses should be used. If you are at all unsure which plug or fuse to use, always refer to a qualified electrician.

Note: after replacing or changing a fuse on a moulded plug which has a fuse cover, the cover must be refitted to the plug; the appliance must not be used without a fuse cover. If lost, replacement fuse covers can be obtained from an electrical shop. This appliance complies with the following EEC Directives: 73/23 EEC (Low Voltage Directive) and 89/336 EEC (EMC Directive).