



Remark<sup>®</sup> Test Grading Software  
and Xerox<sup>®</sup> DocuMate<sup>®</sup> 5445  
Meeting Schools Test Grading Needs

# Remark® Test Grading Software & Xerox® DocuMate® 5445

This unique solution has been developed specifically for the educational market to deliver flexibility to the automation of test grading. It combines a leading production scanner from Xerox with the new Remark Test Grading Edition Software from Gravic® Inc, the experts in OMR (Optical Mark Recognition).

Remark (Test Grading Edition) provides an easy to use interface designed specifically for teachers. It prints and processes plain paper bubble sheet tests, and provides powerful grade reports, eliminating the need to buy expensive proprietary test sheets. When combined with the innovative DocuMate 5445, with its 45 page per minute scan speed and 75 page document feeder, it presents a totally unique and versatile solution.

Not only does this solution provide a major cost saving for schools but it also provides an asset that can be better utilized. Instead of a traditional single use test grading reader that has significant downtime, schools and districts can continually use this solution beyond test grading; for scanning student records, job applicants, reports, etc.

## Remark Test Grading Software Overview

The Remark Test Grading Edition software provides teachers with simple steps for creating classes, printing pre-loaded answer sheets (with student, class, teacher, and test identifiers on them), scanning and scoring the tests. Save your school thousands of dollars on form costs by printing your answer sheets on plain-paper and using the Xerox® DocuMate® 5445 to scan your tests.

Use the variety of built-in test grading reports to analyze how your students are performing. Easily distribute PDFs of your reports throughout your organization or export your grade information to the gradebook, student or learning management system of your choice.

## How It Works

Remark Test Grading Edition allows you to enter or import classes of students. By including class and student information, the test answer sheets and reports are personalized to your students.

### Choose a Test Answer Sheet

Remark Test Grading Edition contains various answer sheets ranging from 30-200 questions and supports varying answer schemes. The answer sheets also contain a subjective area for non-multiple choice questions such as short answer or essay questions.

### Print Tests

Print the test answer sheets for your class, including instructor name, class name, test name and student name. There is no need to have students bubble in this information... it's done for them! Save thousands of dollars since tests are printed on plain paper with a standard laser printer. There is no need for any proprietary paper, forms or printers!

### Scan Tests

Use the DocuMate 5445 to scan the test answer sheets once the students have taken the test. Its powerful 45 page per minute engine ensures that even the largest classes can have their tests scanned in no time and sharing the scanner across multiple classes is a snap!

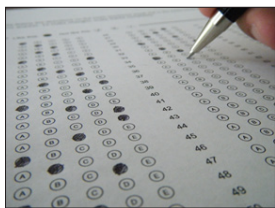
### Review the Data

If desired, review the data for any problem areas, such as blank or multiple responses.

### Run Reports

Choose from eight standard reports to show class or student grades. Reports also include item analysis and descriptive test statistics. In addition, you can export data and grades to popular spreadsheet, database and gradebook applications.

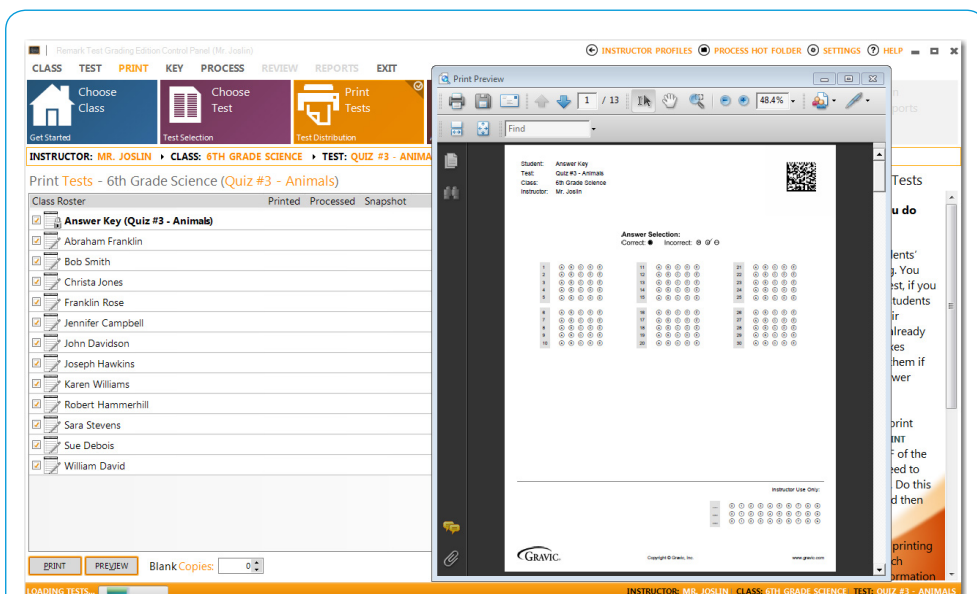
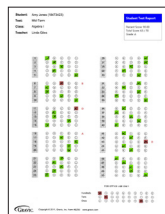
### Print Your Own Answer Sheets



### Scan Using Xerox® DocuMate® 5445



### Generate Powerful Test Grading Reports



Print your own test forms: test answer sheets automatically contain student, class, teacher and test identifiers.

# Remark® Test Grading Software & Xerox® DocuMate® 5445

## Xerox® DocuMate® 5445 Scanner

Why just use your high-speed scanner for test grading? The innovative Xerox® DocuMate® 5445 scanner with its fast scanning, versatile and compact design will not only meet your test grading needs but can meet all your other departmental document scanning needs as well. Its state-of-the-art TWAIN™ driver works with nearly all the leading scanning software on the market.

Conveniently small enough to fit on a desktop, the DocuMate 5445 can quickly convert a large number of documents into electronic data, so it provides smooth usage even in environments with many users. Scanning documents into data makes it possible to consolidate information, which improves productivity. And it lowers the cost of handling

documents and reduces the space needed to store them.

Another unique feature of the DocuMate 5445 is the paper feed rollers. The rollers rotate independently left and right to reduce document skewing during scanning. In addition, the active double-feed prevention roller reverses rotation the instant that the leading document leaves the paper feed section to prevent the double-feeding of documents that are simply stuck together.

However, there are documents for which scanning should not be stopped even when double-feeding is detected. Those include envelopes and documents with sticky notes attached. When the DocuMate 5445 pauses at one of these documents, scanning is easily resumed with the touch of a button.



### Xerox® DocuMate® 5445 Product Specifications

Scan Speed (Portrait @ 200 dpi b/w, grayscale & color)	45 ppm simplex / 90 ipm duplex
Scan Method	Fast duplex ADF
Imaging Sensor	CIS (Contact Image Sensor)
Light Source	LED (light emitting diode), instant on
Background Color	Black
Optical Resolution	300/600 dpi (Switchable)
Output Bit Depth	24-bit color, 8-bit grayscale, 1-bit black & white
Interface	Hi-Speed USB 2.0 (USB 1.1 compatible)
Detection	Ultrasonic double feed detection, Dog-ear detection
Dimensions (ADF attached, trays closed)	12.5"(w) x 11"(d) x 9.5"(h) (318 x 280 x 241 mm)
Size (footprint)	12.5" x 8.2" (318 x 210 mm)
Weight	8.8 lb (4.0 kg)
Maximum Paper Weight	55 lb (206 g/m²)
ADF Maximum Document Size	Paper: 8.5" x 100" (216 x 2540 mm)
ADF Minimum Document Size	Paper: 1.9" x 2.8" (48 x 70 mm); Card: 3.4" x 2.1" (85.6 x 54 mm)
ADF Capacity	75 sheets (20 lb. paper / 75 g/m²)
Duty Cycle	4,000 pages/day

## Highlights

- Easy to use streamlined test grading solution
- Built on the industry leading framework of Remark Office OMR
- Scan and run reports with a few clicks of the mouse
- Print plain-paper answer sheets on your printer with student, teacher, class, and test information for easy identification
- Scan tests with the Xerox® DocuMate® 5445
- Extremely scalable - flexible software licensing available
- Includes powerful analysis reports for classes and students
- Report on standards and learning objectives
- Easily export grades to gradebooks and other popular applications

Student Response Report

Subject: Remark School Class: 8th Grade Math

Test: Unit Test #1

Legend: Correct (Green box) Incorrect (Red box) Unanswered or Other Incorrect Response (Empty box)

Students: [List of student names]

Questions: [List of question numbers]

Page 1

Student Response Report: Quickly see performance on both individual students and questions. Green boxes for correct answers, red for incorrect.



# Remark® Test Grading Software & Xerox® DocuMate® 5445

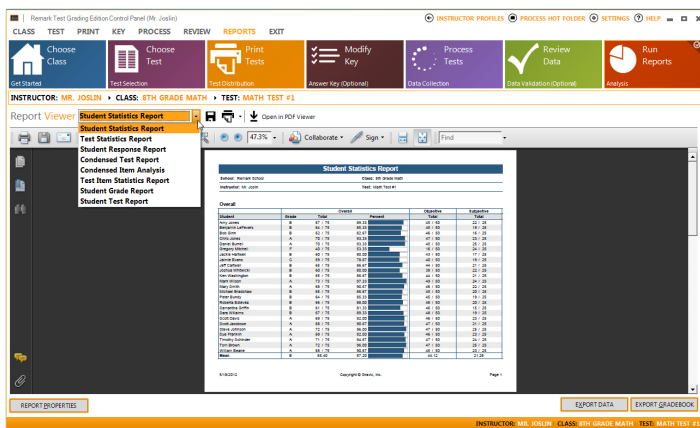
## A Better Solution at a Lower Cost

The Remark Test Grading Software & Xerox® DocuMate® 5445 solution provides exceptional cost-savings and increased efficiencies due to the non-proprietary hardware and plain paper forms, some of the many benefits include:

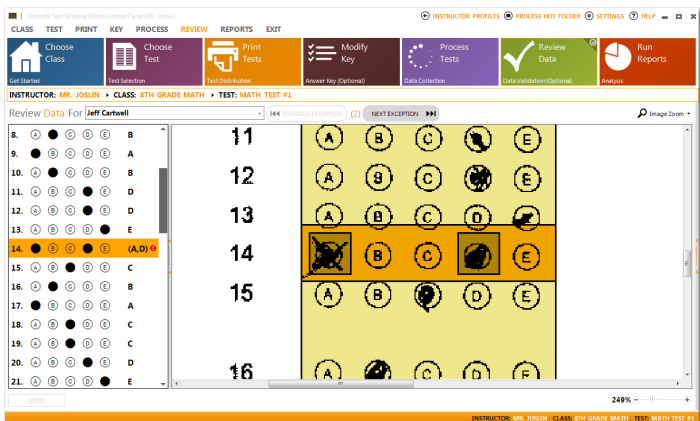
- **Lower operating costs** – No expensive paper or service contracts.
- **Versatility** – Utilize your scanner and PC for

other scanning tasks. Use existing printers to create tests and export all grading results to nearly all 3rd-party gradebook software.

- **Ease of use** – Standard TWAIN interface and small learning curve makes the Test Grading Edition software a snap to use.
- **Reliability** – Robust duty cycles and excellent paper handling coupled with automated grading ensure maximum up-time and accurate results.



Run reports: Select from eight report options which provides various information on your overall class, test and individual students.



Review data: Review your students scanned bubble sheets. This optional step allows you to review and modify exceptions like multiple answers selected for single answer questions and blank responses.

## Bundle Order Number:

GMate5445-SW

## Box Contents:

- DocuMate 5445 Scanner
- Remark Test Grading Edition – OMR single user license
- USB 2.0 Cable
- Quick Install Card
- Technical Support Card
- DVD-ROM including:
  - User's Manual
  - Nuance OmniPage Pro
  - Nuance PaperPort
  - Nuance PDF Converter
  - Visioneer® OneTouch®
  - Visioneer Acuity
- Scanner Drivers: EMC certified ISIS, TWAIN, Microsoft Windows® Image Acquisition (WIA) Driver, Visioneer DriverPLUS.

## PC Minimum System Requirements

- Pentium® IV or equivalent processor
- Windows® 8 / Windows 7 / Vista® / XP®
- 2GB RAM
- 350 MB available hard drive space
- DVD-ROM drive
- USB 2.0 port

## Warranty Information:

Xerox® DocuMate® 5445 Scanner  
(Provided by Xerox):

- Standard 1-year Warranty
- Optional 1-5 year Advanced Exchange
- Optional 1-5 year Next Day Business \*
- Optional 1-5 year 4-hour response \*

## Scanner Consumables:

- 5445ROLL-KIT – User installable roller assembly. The roller kit will last up to 100,000 scans depending on scanning conditions.

## Remark Test Grading Warranty Information (Provided by Remark):

- One year of technical support
- One year renewals available after first year

For more information about the Xerox line of scanners, visit [www.xeroxscanners.com](http://www.xeroxscanners.com)

For a live demo please visit: <http://youtu.be/SvyY2EkFrBI>

©2013 Xerox Corporation. All rights reserved. Xerox®, Xerox and Design®, and DocuMate® are trademarks of Xerox Corporation in the United States and/or other countries. Visioneer® and OneTouch® are trademarks of Visioneer, Inc. Kofax®, VirtualReScan® and VRS™ are trademarks of Kofax, Inc. Nuance® and OmniPage® are trademarks of Nuance Communications, Inc. or its affiliates in the United States and/or other countries. Microsoft®, Windows Vista®, Windows®, the Windows logo and XP® are trademarks of Microsoft Corporation in the United States and/or other countries. Intel® and Pentium® are trademarks of Intel Corporation in the U.S. and/or other countries. TWAIN™ is a trademark of TWAIN Working Group. EMC®, Captiva®, and ISIS® are trademarks of EMC Corporation. Gravic®, Remark®, and OMR are trademarks of Gravic, Inc. Universal Serial Bus is a trademark of USB Implementers Forum, Inc. (USB-IF). All other trademarks are the property of their respective owners and are hereby acknowledged. Prices, features, specifications, capabilities, appearance and availability of Xerox products and services are subject to change without notice. 03/13

