

# Flobo Hard Disk Repair User guide

by Flobo Recovery



[www.floborecovery.biz](http://www.floborecovery.biz)

Data Recovery as Art!

December 2009

# Legal Notices

## Disclaimer

The information contained in this publication is subject to change without notice. Flobo Recovery Corporation makes no warranty of any kind with regard to this manual, including, but not limited to, the implied warranties of merchantability and fitness for a particular purpose. Flobo Recovery Corporation shall not be liable for errors contained herein or for incidental or consequential damages in connection with the furnishing, performance, or use of this manual.

## **Table of contents**

|   |    |
|---|----|
| Introducing Flobo Hard Disk Repair..... | 1  |
| Flobo Hard Disk Repair Operation .....  | 2  |
| FAQ.....                                | 13 |
| License Agreement.....                  | 17 |

---

## 1. Introducing Flobo Hard Disk Repair

Flobo Hard Disk Repair is a program designed to repair hard disks damaged because of bad sectors.

Bad sectors are the sectors that cannot be accessed, read or write. As a result of bad sectors, the operating system is not able to access data. Consequently, operating system freezes when trying to read and copy data from your disk. When a hard drive is subject to this kind of errors, the disk basically cannot be used because a small amount of sectors ( one or several dozens of total of 900 millions of sectors – in case of a 500 Gs HDD) that are faulty. The Flobo Hard Disk Repair can repair damaged hard disks without affecting or changing existing data.

One feature of the software is that you are able to check S.M.A.R.T. information. Modern hard disks support S.M.A.R.T. (Self-Monitoring, Analysis, and Reporting Technology) that was specially developed to detect upcoming disk failures. The software informs you the current temperature of the hard disk – which is a very important factor in hard drive reliability, and the power-in-use hours of the hard disk – a very important issue in deciding of using or not a hard drive. Flobo Hard Disk Repair is able to predict possible failure, reading current state of various life-critical parameters describing a disk's reliability, and advice the user to backup data and replace hard disk.

## 2. Flobo Hard Disk Repair Operation

In order to perform hard disks repairing you need to follow the bellow mentioned steps.

**Step 1.** In the hard drives list you can find your installed hard disk drives. First step is to select the hard disk to be scanned as depicted bellow.

The screenshot shows the Flobo Hard Disk Repair 4.1 software interface. The main window is titled "Flobo Hard Disk Repair". On the left, there is a table of SMART attributes. Below the table, there is a text box explaining the S.M.A.R.T. details. On the right, there is a list of hard drives. A red box highlights the drive list, and a blue box highlights the selected drive. Below the drive list, there are input fields for "Start sector", "End Sector", and "Capacity (MB)". At the bottom, there are buttons for "Open session", "Scan", "Exit", and a status panel showing "Temperature", "Status", and "Time counter".

| AttrId | Name                   | Current ... | Value |
|--------|------------------------|-------------|-------|
| 001    | Read Error Rate        | 37568       | 99    |
| 003    | Spin-Up Time           | 0           | 92    |
| 004    | Start/Stop Count       | 279         | 100   |
| 005    | Reallocated Sectors... | 0           | 100   |
| 007    | Seek Error Rate        | 39332       | 60    |
| 009    | Power-On Hours         | 1953        | 98    |
| 010    | Spin Retry Count       | 0           | 100   |
| 012    | Power Cycle Count      | 410         | 100   |
| 187    | Reported Uncorrect...  | 0           | 100   |

The S.M.A.R.T. details for the selected hard disk is displayed above. Press on each smart attribute to see more information. In order to repair hard disk select one in the list and press Scan

Drive 0 Hitachi HDP725050GLA360  
Drive 1 ST 3500830AS

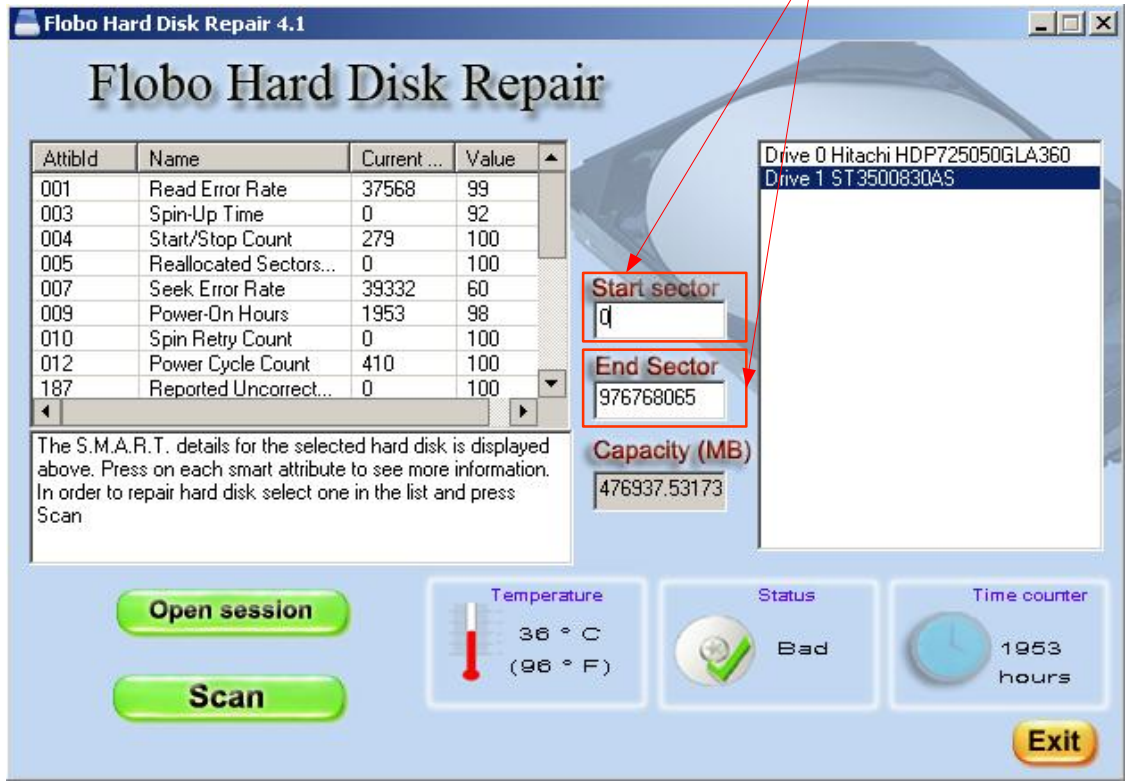
Start sector: 0  
End Sector: 976768065  
Capacity (MB): 476937.53173

Temperature: 36 ° C (98 ° F)  
Status: Bad  
Time counter: 1953 hours

Buttons: Open session, Scan, Exit

**Step 2.** In case you want to scan a particular region of the hard disk you are able to modify the value in the start sector and end sector text boxes. If you want to scan entire hard disk surface than you should let the default values.

The limits of the region to be scanned





## Note

After selecting a disk drive, the temperature, the status calculated using S.M.A.R.T. details and timer counter (the power-in state hours) are displayed.

| AttrId | Name                   | Current ... | Value |
|--------|------------------------|-------------|-------|
| 001    | Read Error Rate        | 37568       | 99    |
| 003    | Spin-Up Time           | 0           | 92    |
| 004    | Start/Stop Count       | 279         | 100   |
| 005    | Reallocated Sectors... | 0           | 100   |
| 007    | Seek Error Rate        | 39332       | 60    |
| 009    | Power-On Hours         | 1953        | 98    |
| 010    | Spin Retry Count       | 0           | 100   |
| 012    | Power Cycle Count      | 410         | 100   |
| 187    | Reported Uncorrect...  | 0           | 100   |

The S.M.A.R.T. details for the selected hard disk is displayed above. Press on each smart attribute to see more information. In order to repair hard disk select one in the list and press Scan

Start sector:

End Sector:

Capacity (MB):

Temperature: 36 ° C (96 ° F)

Status: Bad

Time counter: 1953 hours

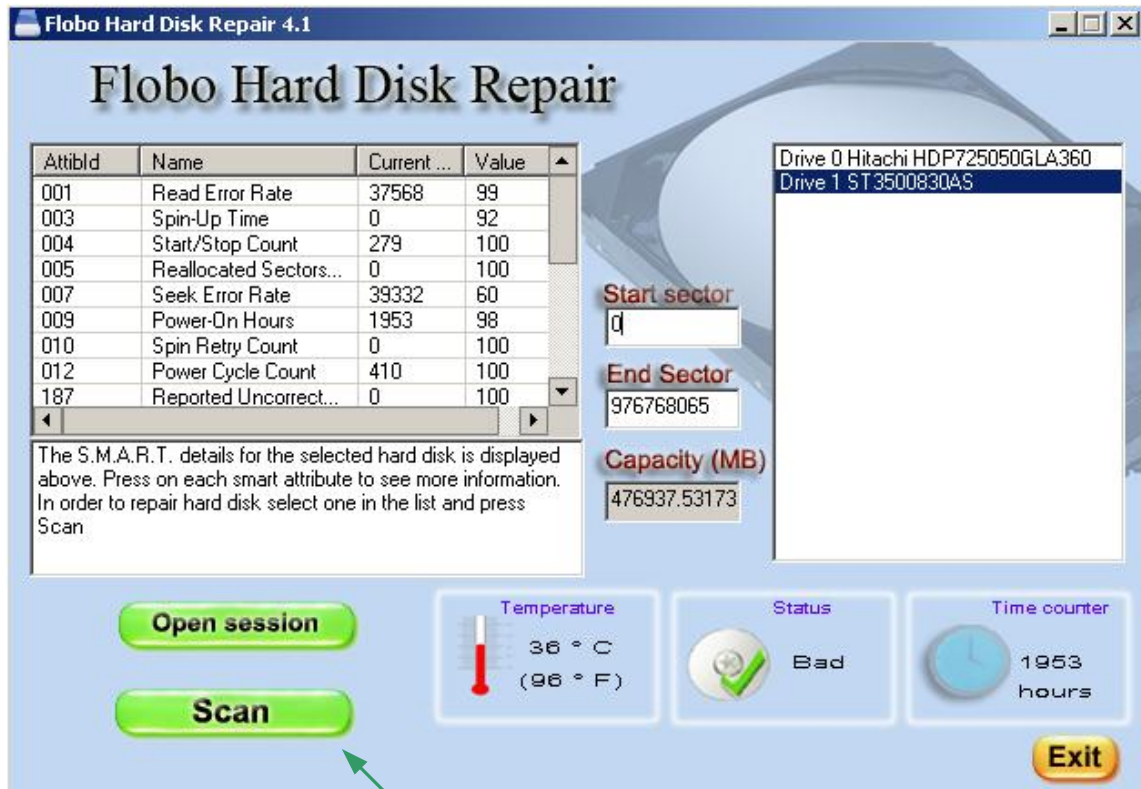
Buttons: Open session, Scan, Exit

Drive temperature

Hard Disk status using S.M.A.R.T. information

Power-on-time

**Step 3.** After selecting the hard disk to be processed press scan.



Scan button





## Note

In case your hard disk S.M.A.R.T. information indicates bad health status you will be informed after pressing Scan button. You should backup data on this drive in this circumstance.

**Flobo Hard Disk Repair**

| AttrId | Name                   | Current ... | Value |
|--------|------------------------|-------------|-------|
| 001    | Read Error Rate        | 37568       | 99    |
| 003    | Spin-Up Time           | 0           | 92    |
| 004    | Start/Stop Count       | 279         | 100   |
| 005    | Reallocated Sectors... | 0           | 100   |
| 007    | Seek Error Rate        | 39332       | 60    |

Drive 0 Hitachi HDP725050GLA360  
Drive 1 ST3500830AS

**Flobo Hard Disk Repair**

You should Backup you data IMMEDIATELY from hard disk: ST3500830AS! Smart attributes show wrong value!

OK

476937:53173

**Open session**

**Scan**

Temperature: 36 ° C (96 ° F)

Status: Bad

Time counter: 1953 hours

**Exit**

**Step 4.** You will be asked if you want to perform a scan & repair operation or to perform regeneration of entire hard disk surface. The scan and repair operation is faster, but is not able all the time to repair instable sectors while generate all surface allows regeneration of all hard disk surface.





## Note

In case you want to stop the current scanning process, you should press stop button.

6 % processed sector number: 56506900 Elapsed: 1 min 8 hrs Remaining: 33 min 130 hrs

### Flobo Hard Disk Repair

| AttrblId | Name                   | Current ... | Value |
|----------|------------------------|-------------|-------|
| 001      | Read Error Rate        | 37568       | 99    |
| 003      | Spin-Up Time           | 0           | 92    |
| 004      | Start/Stop Count       | 271         | 100   |
| 005      | Reallocated Sectors... | 0           | 100   |
| 007      | Seek Error Rate        | 28479       | 60    |
| 009      | Power-On Hours         | 1857        | 98    |
| 010      | Spin Retry Count       | 0           | 100   |
| 012      | Power Cycle Count      | 402         | 100   |
| 187      | Reported Uncorrect...  | 0           | 100   |

Drive 0 Hitachi HDP725050GLA360  
Drive 1 ST3500830AS

**Start sector**  
0

**End Sector**  
976768065

**Capacity (MB)**  
476937.53173

The S.M.A.R.T. details for the selected hard disk is displayed above. Press on each smart attribute to see more information. In order to repair hard disk select one in the list and press Scan

**Stop**

**Temperature**  
36 ° C  
(96 ° F)

**Status**  
Bad

**Time counter**  
1857 hours

**Exit**



You will be asked to confirm if you want to stop the process.

| AttrId | Name                   | Current ... | Value |
|--------|------------------------|-------------|-------|
| 001    | Read Error Rate        | 37568       | 99    |
| 003    | Spin-Up Time           | 0           | 92    |
| 004    | Start/Stop Count       | 279         | 100   |
| 005    | Reallocated Sectors... | 0           | 100   |
| 007    | Seek Error Rate        | 39332       | 60    |
| 009    | Power-On Hours         |             |       |
| 010    | Spin Retry Count       |             |       |
| 012    | Power Cycle Count      |             |       |
| 187    | Reported Uncorre...    |             |       |

Drive 0 Hitachi HDP725050GLA360  
Drive 1 ST3500830AS

Start sector

476937.53173

Temperature: 36 ° C (96 ° F)

Status: Bad

Time counter: 1953 hours

Stop

Exit



## Note

Also you will be asked if you want to save session, in order to re-start later the process from the current state.

If you want to save the current session press yes.

1 % Sector number: 13418500 Elapsed: 16 min 0 hrs Remaining: 8 min 19 hrs

### Flobo Hard Disk Repair

| AttrId | Name                   | Current ... | Value |
|--------|------------------------|-------------|-------|
| 001    | Read Error Rate        | 37568       | 99    |
| 003    | Spin-Up Time           | 0           | 92    |
| 004    | Start/Stop Count       | 279         | 100   |
| 005    | Reallocated Sectors... | 0           | 100   |
| 007    | Seek Error Rate        | 39332       | 60    |
| 009    | Power                  |             |       |
| 010    | Spin                   |             |       |
| 012    | Power                  |             |       |
| 187    | Repc                   |             |       |

Start sector

Drive 0 Hitachi HDP725050GLA360  
Drive 1 ST3500830AS

476937:53173

Press yes if you want to save current session.  
Do you want to save current session in order to start later the scanning process ?

Yes No

Temperature: 36 ° C (96 ° F)

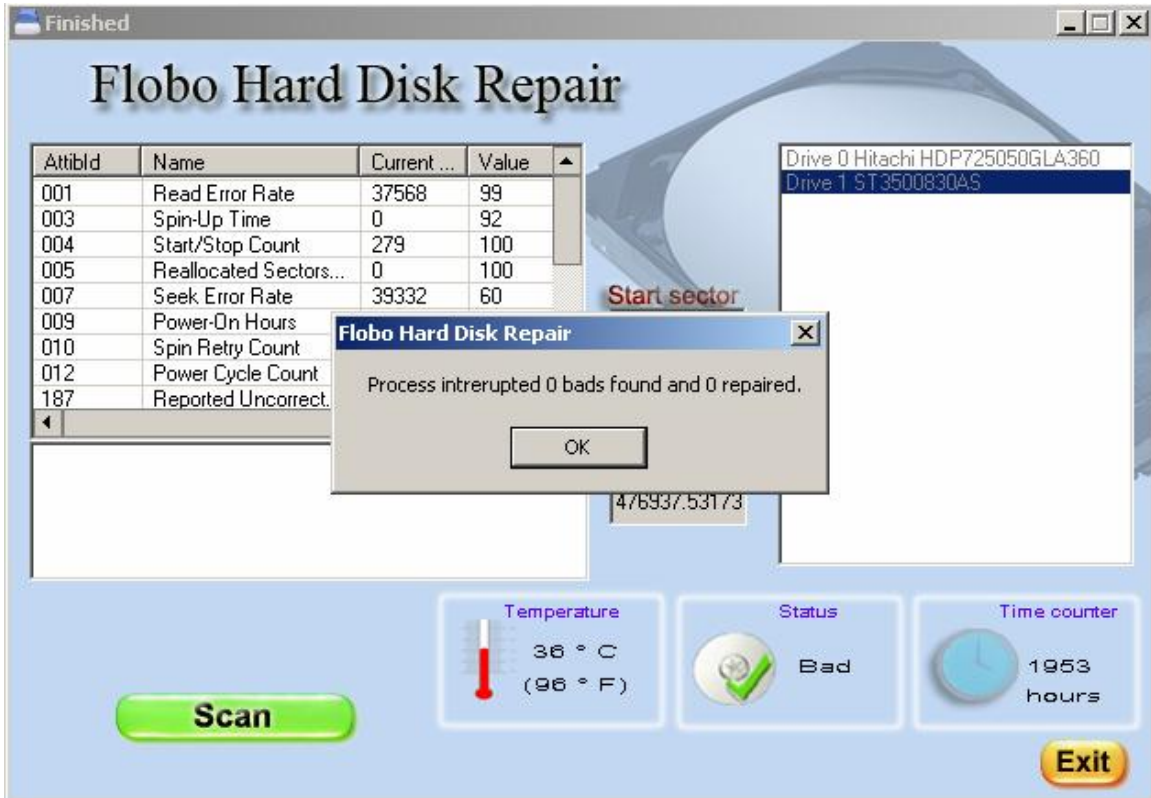
Status: Bad

Time counter: 1953 hours

Stop

Exit

**Step 6.** After entire hard disk surface is scanned it is displayed the results of the scanning.





## Note

Open session button allows selecting a previously selected session.

| AttrId | Name                   | Current ... | Value |
|--------|------------------------|-------------|-------|
| 001    | Read Error Rate        | 37568       | 99    |
| 003    | Spin-Up Time           | 0           | 92    |
| 004    | Start/Stop Count       | 279         | 100   |
| 005    | Reallocated Sectors... | 0           | 100   |
| 007    | Seek Error Rate        | 39332       | 60    |
| 009    | Power-On Hours         | 1953        | 98    |
| 010    | Spin Retry Count       | 0           | 100   |
| 012    | Power Cycle Count      | 410         | 100   |
| 187    | Reported Uncorrect...  | 0           | 100   |

Drive 0 Hitachi HDP725050GLA360  
Drive 1 ST3500830AS

Start sector: 0  
End Sector: 976768065  
Capacity (MB): 476937.53173

Temperature: 38 ° C (98 ° F)  
Status: Bad  
Time counter: 1953 hours

Buttons: Open session, Scan, Exit

Open session button

---

## Frequently asked questions

### **1. This program deletes or overwrites all the data on the hard drive?**

No, the program does not delete, or rewrite data on the hard drive. The data will remain on the disk.

### **2. The program deletes partition?**

No, the program does not delete partition.

### **3. The program is able to regenerate partition that are not recognize by windows?**

Yes, as previously stated, the program is accessing the hard at low level communication and is not concerning the way the data is managed on hard disk drive.

### **4. The program is able to regenerate IDE or SCSI or SATA hard disks?**

The software is able to handle all disk interfaces.

### **5 The program is able to repair hard disk that cannot be recognized by BIOS?**

No, in this case the software is not able to repair the hard disk.

### **6. The program is able to repair the hard disk if there is a mechanical problem?**

No, in this case the software is not able to repair the hard disk.

### **7. The program is able to repair all bad sectors ?**

No, in case of physical bad sectors caused, for instance, by shock, the program is not able to repair the surface.

### **8. How much last the standard scan ?**

Bellow you can find approximate figures for different hard disk drives capacities:

|       |          |
|-------|----------|
| 500 G | 19 hours |
| 250 G | 10 hours |



**9. How much last the “regenerate-all-surface” procedure?**

Bellow you can find approximate figures for different hard disk drives capacities:

|       |           |
|-------|-----------|
| 500 G | 130 hours |
| 250 G | 70 hours  |

**10. Am I able to restart the scanning process from the current sector?**

Yes, you must press yes when asked to save the session and next time you want to re-start the process select open session and select the previously saved file.

**11. Can I scan the current hard disk drive from the same hard disk drive where the operating system is running?**

Yes, you can do that, but you will notice a slow responsiveness of the operating system.

**12. My scan is showing 20 hours remaining, though initially it was displayed 12 hours, what happened?**

In case of encountering bad sectors the scanning will last longer.

**13. The program is “freezing” time to time. What is happening?**

The program is trying to repair the bad sectors and the hard disk is responding with huge delay. After repairing or bypassing the bad sectors you will be able to access the interface.

**14. I am listening music while scanning the hard disk. Time to time the music is interrupted. What is happening?**

The program is accessing bad sectors and the operating system encounters time delay in executing programs.

**15. I am scanning the same hard disk where windows is running. At a certain time all operating system freezes. What is the problem?**

It seems that same of the files of the operating system are placed on hard disk region with bad sectors. Because of the supplementary hard disk accessing of the software, the operating system is not able to handle that delay/error and it freezes or even restart. We recommend scanning the hard disk (where the operating system is installed) as a slave.

**16. The program is warning me that the hard disk temperature is too high. Is something wrong to use it? – Though is working without problem?**

The long term using of a hard disk in temperature above 50 Celsius will lead to failure (because of the mechanical parts that are affected by the temperature). We do recommend a running temperature of about 35 Celsius degrees. In case of high temperature you need to install a supplementary fan on your case, or even check if not some of the fans failed.

**17. Your program is displaying two hard disk while in windows explorer I cannot see another partition from the second hard drive. The second hard disk is failed?**

No, the hard disk is not failed, if you are not bale to see any partition in windows explorer means that there is unpartitioned space, non-windows partition or corrupt partitions on the mentioned hard disk.

**18. Is this program able to recover data on hard disk?**

No, this program is not data recovery software. However helps recover data because repairs bad sector and other file – recovery software will be able to access data.

**19 My hard drive is not spinning ( I can feel by touch it that there is no vibrations). Is this software able to repair it?**

No. See 6.

**20. My computer is restarting continuously. Is this caused by the bad sectors on hard drive?**

One of the cause of restraint operating system is that the operating system is trying to access its own files that are corrupt because are located in a bad sector region on hard disk. However, the causes for restarting computer are multiple. You first check if the power source is not faulty, or the memory is not dirty. Also the fluctuation of power might lead to the continuous restarting ( by using a UPC – uninterruptible power source – you can solve the problem).

**21. Is this program able to repair memory stick or SSD hard disk drives?**

No, is not.

**22. Some of my hard disks have different S.M.A.R.T. details than the others. Is something wrong?**

No, each hard disk drive manufacturer and model might have different **S.M.A.R.T.** attributes.

**23. My hard disk drive has 2000 hours of power-in-time, is that much, do I need to replace it?**

Though the MTBF (Mean Time Before Failure) of a hard disk drive as provided by manufacturer is about 1 mil hours, this is a huge limit. 40 000 hours is usually a limit for a user to change the hard disk drive.

**24. The software indicates that I should backup data and replace hard disk as the S.M.A.R.T. details indicates faulty parameter. However the hard disk drives works without any problem. What is the problem?**

The S.M.A.R.T. details indicates wrong value and that means that on long term the hard disk will likely to fall. You should backup data on the hard disk.

**25. Can I work on the same computer while the program is scanning the hard disk?**

Yes, there is no problem working in the same when scanning a hard disk drive. However see 15

**26. If for instance the program repairs, let's say 3 sectors, the data on this sectors will be recovered?**

No, the data on the repaired sectors might not be recovered.

**27. I found on the internet some solutions to repair the hard disk drive such as: hit the drive , put it in refrigerator, etc. These are correct?**

Never do that. In case you are not able to access data because the hard disk is not detected by BIOS you should contact a professional data recovery expert.

**28. I noticed that the remaining time is not correct. What is wrong?**

The remaining time is an estimated time, several issues, such as varying speed with higher LBA sector, bad sectors on the disk drive, does not allow calculating exactly the time remaining.

---

## **Licence Agreement**

BY RUNNING THIS SOFTWARE, YOU ARE CONSENTING TO BE BOUND BY AND ARE BECOMING A PARTY TO THIS AGREEMENT. IF YOU DO NOT AGREE TO ALL OF THE TERMS OF THIS AGREEMENT, DO NOT EXECUTE IT.

### **LICENSE GRANT.**

Flobo Recovery, grants you a non-exclusive license to use the Software free of charge for evaluation and trial purposes. THIS SOFTWARE CONTAINS CODE THAT DISABLES SOME OF ITS FEATURES. This License does not entitle you to hard-copy documentation, support or telephone assistance.

### **DISCLAIMER OF WARRANTY.**

The Software is provided on an AS IS basis, without warranty of any kind, including without limitation the warranties that the Software is merchantable, fit for a particular purpose or non-infringing. The entire risk as to the quality and performance of the Software is borne by you. Should the Software prove defective in any respect, you and not Flobo Recovery or its suppliers assume the entire cost of any service and repair. In addition, the security mechanisms implemented by the Software have inherent limitations, and you must determine that the Software sufficiently meets your requirements. This disclaimer of warranty constitutes an essential part of the agreement. No use of the Software is authorized hereunder except under this Disclaimer.

### **TERMINATION.**

The license will terminate automatically if you fail to comply with the limitations described herein. You must destroy all copies of the Software upon termination.

## TERMS APPLICABLE WHEN LICENSE FEES PAID:

### LICENSE GRANT.

Subject to payment of applicable license fees, Licensor grants to you a non-exclusive license to use the Software and accompanying documentation ("Documentation") in the manner described below under "SCOPE OF LICENSE GRANT".

If any modifications are made to the Software by you during the warranty period; if the media is subjected to accident, abuse, or improper use; or if you violate the terms of this Agreement, then this warranty shall immediately terminate. Moreover, this warranty shall not apply if the Software is used on or in conjunction with hardware or software other than the unmodified version of hardware and software with which the Software was designed to be used as described in the Documentation.

THIS IS A LIMITED WARRANTY, AND IT IS THE ONLY WARRANTY MADE BY LICENSOR OR ITS SUPPLIERS. LICENSOR MAKES NO OTHER WARRANTIES, EXPRESS OR IMPLIED, INCLUDING BUT NOT LIMITED TO WARRANTIES OF MERCHANTABILITY, FITNESS FOR A PARTICULAR PURPOSE, AND NONINFRINGEMENT OF THIRD PARTIES' RIGHTS. YOU MAY HAVE OTHER STATUTORY RIGHTS.

HOWEVER, TO THE FULL EXTENT PERMITTED BY LAW, THE DURATION OF STATUTORILY REQUIRED WARRANTIES, IF ANY, SHALL BE LIMITED TO THE ABOVE LIMITED WARRANTY PERIOD.

MOREOVER, IN NO EVENT WILL WARRANTIES PROVIDED BY LAW, IF ANY, APPLY UNLESS THEY ARE REQUIRED TO APPLY BY STATUTE NOTWITHSTANDING THEIR EXCLUSION BY CONTRACT. NO DEALER, AGENT, OR EMPLOYEE OF LICENSOR IS AUTHORIZED TO MAKE ANY MODIFICATIONS, EXTENSIONS, OR ADDITIONS TO THIS LIMITED WARRANTY. TERMS APPLICABLE TO ALL LICENSE GRANTS SCOPE OF LICENSE GRANT.

You may:

\*Use the Software on any single computer;

\*Use the Software on a second computer so long as only one (1) copy is used at a time;

\*Use the Software on a network, provided that a licensed copy of the Software has been acquired for each person permitted to access the Software through the network;

\*Copy the Software for archival purposes, provided any copy must contain all of the original Software's proprietary notices; or

\*If you have purchased a Right to Copy license for multiple copies of the Software, make the number of copies of Software (but not the Documentation) stated on the packing slip or invoice, provided any copy must contain all of the original Software's proprietary notices. The number of copies on the invoice is the total number of copies that may be made. Additional copies of Documentation may be purchased from Licensor.

You may not:

\*Permit other individuals to use the Software except under the terms listed above;

\*Permit concurrent use of the Software;

\*Modify, translate, reverse engineer, decompile, disassemble (except and solely to the extent an applicable statute expressly and specifically prohibits such restrictions), or create derivative works based on the Software;

\*Copy the Software other than as specified above;

\*Rent, lease, grant a security interest in, or otherwise transfer rights to the Software;

\*Using Flobo Recovery products with files not belonging to the license owner. It is explicitly prohibited to use the program as means to sell an Access data recovery service to third parties; or

\*Remove any proprietary notices or labels on the Software.

TITLE.

Title, ownership rights, and intellectual property rights in the Software shall remain in Flobo Recovery and/or its suppliers. The Software is protected by copyright and other intellectual property laws and by international treaties.

Title and related rights in the content accessed through the Software is the property of the applicable content owner and is protected by applicable law. The license granted under this Agreement gives you no rights to such content.

#### TERMINATION.

This Agreement and the license granted hereunder will terminate automatically if you fail to comply with the limitations described herein. Upon termination, you must destroy all copies of the Software and Documentation.

#### LIMITATION OF LIABILITY.

UNDER NO CIRCUMSTANCES AND UNDER NO LEGAL THEORY, TORT, CONTRACT, OR OTHERWISE, SHALL LICENSOR OR ITS SUPPLIERS OR RESELLERS BE LIABLE TO YOU OR ANY OTHER PERSON FOR ANY INDIRECT, SPECIAL, INCIDENTAL, OR CONSEQUENTIAL DAMAGES OF ANY CHARACTER INCLUDING, WITHOUT LIMITATION, DAMAGES FOR LOSS OF GOODWILL, WORK STOPPAGE, COMPUTER FAILURE OR MALFUNCTION, OR ANY AND ALL OTHER COMMERCIAL DAMAGES OR LOSSES.

IN NO EVENT WILL LICENSOR BE LIABLE FOR ANY DAMAGES IN EXCESS OF THE AMOUNT LICENSOR RECEIVED FROM YOU FOR A LICENSE TO THE SOFTWARE, EVEN IF LICENSOR SHALL HAVE BEEN INFORMED OF THE POSSIBILITY OF SUCH DAMAGES, OR FOR ANY CLAIM BY ANY THIRD PARTY. THIS LIMITATION OF LIABILITY SHALL NOT APPLY TO LIABILITY FOR DEATH OR PERSONAL INJURY RESULTING FROM LICENSOR'S NEGLIGENCE TO THE EXTENT APPLICABLE LAW PROHIBITS SUCH LIMITATION. SOME JURISDICTIONS DO NOT ALLOW THE EXCLUSION OR LIMITATION OF INCIDENTAL OR CONSEQUENTIAL DAMAGES, SO THIS EXCLUSION AND LIMITATION MAY NOT APPLY TO YOU.

#### HIGH RISK ACTIVITIES.

The Software is not fault-tolerant and is not designed, manufactured or intended for use or resale as on-line control equipment in hazardous environments requiring fail-safe performance, such as in the operation of nuclear facilities, aircraft navigation or communication systems, air traffic

control, direct life support machines, or weapons systems, in which the failure of the Software could lead directly to death, personal injury, or severe physical or environmental damage ("High Risk Activities"). Accordingly, Licensor and its suppliers specifically disclaim any express or implied warranty of fitness for High Risk Activities.

MISCELLANEOUS. This Agreement represents the complete agreement concerning the license granted hereunder and may be amended only by a writing executed by both parties. THE ACCEPTANCE OF ANY PURCHASE ORDER PLACED BY YOU IS EXPRESSLY MADE CONDITIONAL ON YOUR ASSENT TO THE TERMS SET FORTH HEREIN, AND NOT THOSE IN YOUR PURCHASE ORDER. If any provision of this Agreement is held to be unenforceable, such provision shall be reformed only to the extent necessary to make it enforceable.