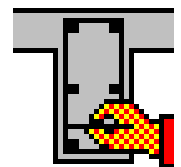


User's manual



ConCrete Plus

© BuildSoft nv

All rights reserved. No part of this document may be reproduced or transmitted in any form or by any means, electronic or manual, for any purpose whatsoever, without the prior written consent from BuildSoft.

The programs described in this manual are subject to copyright by BuildSoft. They may only be used by the licensee and may only be copied for the purpose of creating a security copy. It is prohibited by law to copy them for any other purpose than the licensee's own use.

Although BuildSoft has tested the programs described in this manual and has reviewed this manual, they are delivered 'As Is', without any warranty as to their quality, performance, merchantability or fitness for any particular purpose. The entire risk as to the results and performance of the programs, and as to the information contained in the manual, lies with the end-user.

TABLE OF CONTENTS

TABLE OF CONTENTS.....	1
CHAPTER 1 INTRODUCTION.....	4
1.1. Required hardware	5
1.2. Installing ConCrete Plus	5
1.3. ConCrete, the other modules	5
CHAPTER 2 A FIRST REINFORCEMENT PLAN	6
2.1. Introduction.....	7
2.2. Opening a ConCrete-project.....	9
2.3. Getting an element out of the ConCrete-project	10
2.4. Determining the diameters for longitudinal bars	11
2.4.1. The window "Diameter determination"	11
2.4.2. Transposition of theoretical sections into bars	12
2.4.3. Copying bars	15
2.4.4. Determination of bar lengths	16
2.5. Entering geometrical data	18
2.6. Support characteristics	20
CHAPTER 3 CROSS SECTIONS	21
3.1. Creating cross sections.....	22
3.2. Observation direction	23
3.3. Removing cross sections	24
CHAPTER 4 COMMENTS ON THE PLAN	25
4.1. Introduction.....	26
4.2. Bar legend	26
4.3. Stirrups.....	26
4.4. Bars.....	28
4.5. Cross sections	29
4.6. Form text	31
4.7. Bar codes	31
CHAPTER 5 A PROPER REPRESENTATION.....	33
5.1. Introduction.....	34
5.2. Defining your own styles	34

5.3. Selecting styles	35
5.4. Layer names.....	36
5.5. Setting the background colour	37
5.6. Positioning of the title frame	38
5.7. Positioning of the bar bending schedule	38
5.8. Positioning of the title	39
CHAPTER 6 UNITS AND PRECISION	40
6.1. Introduction.....	41
6.2. Units.....	41
6.3. Precision.....	41
6.4. Possible combinations	42
CHAPTER 7 MODIFYING THE REINFORCEMENT	43
7.1. Bar tolerances.....	44
7.2. Continuous or discontinuous bars on supports	46
7.3. Curved or straight anchorage	47
7.4. Continuous or discontinuous anchorage	47
7.5. Modifying bar lengths	50
7.6. Entering web reinforcement	52
7.7. Maximum bar length.....	54
7.8. Modifying the stirrups	55
CHAPTER 8 AN ENTIRE PROJECT OF BEAMS	58
8.1. Introduction.....	59
8.2. Defining classes	59
8.3. Getting an element out of a certain class	60
8.4. Moving an element to another class.....	60
8.5. Duplicating an element	60
8.6. Deleting an element.....	61
8.7. Copying elements between projects	61
CHAPTER 9 BAR BENDING SCHEDULE	62
9.1. Automatic generation of bar bending schedule.....	63
9.2. Numbering of the bars	63
9.3. Exporting a bar bending schedule file	65
CHAPTER 10 PRINTING.....	67
10.1. Page setup settings.....	68
10.2. Setting the print options	69
10.3. Printing an entire project	71

10.4. Printing an entire class	71
10.5. Printing only one element.....	71
CHAPTER 11 EXPORT TO CAD PROGRAMS.....	72
11.1. Plot settings	73
11.1.1. File format	73
11.1.2. Plot font	73
11.1.3. Plot scale.....	75
11.3. Creating a plot file	76
CHAPTER 12 SAVING, OPENING, CLOSING.....	77
12.1. Opening an existing project	78
12.2. Saving an existing project.....	78
12.3. Saving automatically	78
12.4. Closing a project	80
12.5. Editing the project data.....	80
12.6. Quitting the program	80
CHAPTER 13 USEFUL TIPS.....	81
13.1. Calculate automatically or not	82
13.2. Automatic proposition for the reinforcement.....	82
13.3. Sounds.....	82
13.4. Connections with ConCrete	83
13.5. Use of the arrow-keys	84
13.6. Use of the "Edit"-menu	84
13.7. Zoom in and out on the screen	84
13.8. Modifying the look and feel of ConCrete Plus	85
CHAPTER 14 OVERVIEW OF THE MENUS.....	87
14.1. "File" - menu	88
14.2 "Edit" - menu.....	88
14.3. "Element" - menu	89
14.4. "Window" - menu	89
14.5. "Lay-out" - menu	89
14.6. "Preferences" - menu.....	90
14.7. "Cross section" - menu	91
14.8. "Help" - menu.....	92

Chapter 1 Introduction

1.1. Required hardware

ConCrete is available for the operating systems Microsoft Windows 98, NT, 2000, Millennium, XP, Vista or 7.

1.2. Installing ConCrete Plus

The software can be installed from CD-ROM or over the internet. In this case, you should have a valid LOGIN and PASSWORD to access the "Downloads" section of the BuildSoft website www.buildsoft.eu. BuildSoft customers receive access to this protected section as part of their maintenance or lease service contract. Other people interested in evaluating ConCrete Plus receive valid access data for a 30-days period provided they register at the BuildSoft web site.

The first time you install the program, you need to log on with appropriate administration rights.

1.3. ConCrete, the other modules

ConCrete belongs to a package of 3 programs which together manage the design process of reinforced concrete beams.

The ConCrete module automises the static and organic calculation of continuous beams and slabs (in one direction) of reinforced concrete.

The ConCrete Plus module uses these results for generating the reinforcement plans.

The ConCrete List module creates the bar bending schedules of the used reinforcement steel.

ConCrete Plus can only be used for the generation of reinforcement plans for elements prior calculated with ConCrete, Diamonds, PowerFrame or PowerPlate.

Chapter 2 A first reinforcement plan

2.1. Introduction

We will now get used to the working method of ConCrete Plus by means of a simple example. Let us consider a two span beam. This is the "**Structure and loads**"-window of ConCrete:

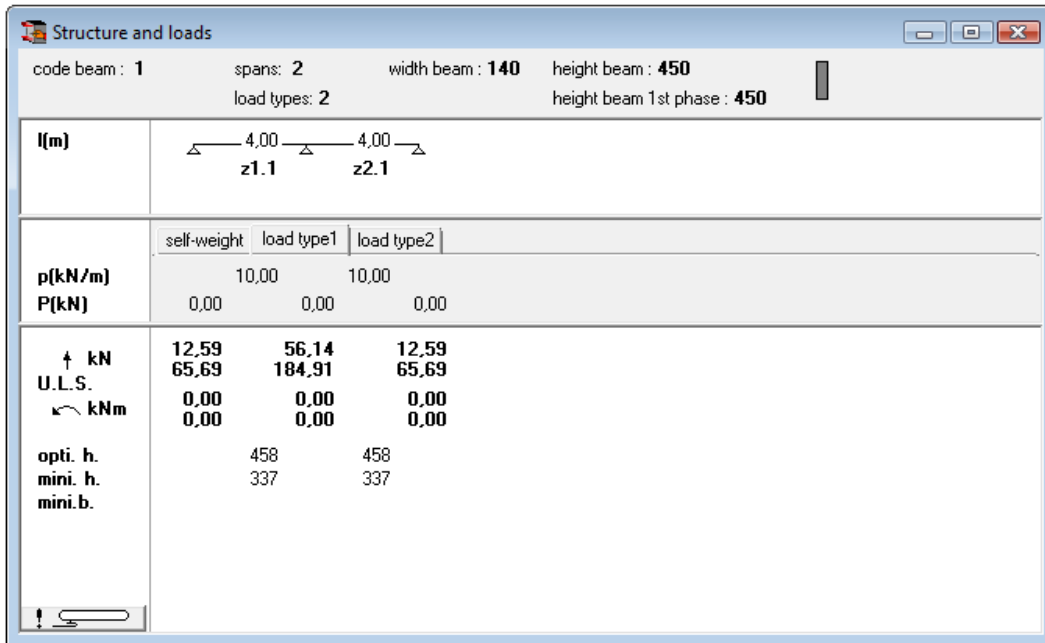


Figure 1: Structure and loads example 1

The load values of the second load type are the following:

self-weight	load type1	load type2
15,00	15,00	
0,00	0,00	0,00

Figure 2: Second load case

The actual values of the analysis parameters are shown in the following figures (Figure 3 to Figure 6). The applied standard is Eurocode 2.

Steel

Beams | Plates

longit. reinforcement S: 500 stirrups S: 500

safety factor: 1,15

max. admitted reinf. stress under rare combinations: 0,80 * f_{yk}

reinforcement cover: top 30 mm, bottom 30 mm

min. reinf. ratio: top 0,0015, bottom 0,0015

top reinf. constant per span bottom reinf. constant per span

lateral cover: 25 mm

stirrup dist. const. over: 2 crack(s)

stirrup dist. multiple of: 10 mm, min. 50 mm

transverse distance: min. 50 mm, max. by standard

no single hooks allowed 200 mm

allowed diam. stirrups:

6 8 10 12 0

transv. reinf. flanges S: 400 show in Reinf. sketch-window

Buttons: Retrieve, Store, Help..., Cancel, OK

Figure 3: Characteristics of the reinforcement

Concrete

char. compr. strength (f_{ck}): 25 N/mm²

2nd ph.: 25 N/mm²

safety factor: 1,50

modulus of elasticity: 30472 N/mm² E_{cm,28}

creep coefficient ϕ (t, t₀): 1,29 n = 15

include self-weight (25 kN/m²) with flanges

tensile strength for calculating crack width and deflection:

2,56 N/mm² f_{ctk} f_{ctm}

maximum admitted compressive stress width under the rare combinations

15,00 N/mm² after creep 0,6 f_{ck}

maximum admitted compressive stress under the quasi-permanent combinations

11,25 N/mm² after creep 0,45 f_{ck}

take concrete shear contribution for: 50 %

maximum admitted crack width under the quasi-permanent combinations

0,30 mm after creep

calculate cracking allways under rare combinations

Buttons: Retrieve, Store, Help..., Cancel, OK

Figure 4: Characteristics of the concrete

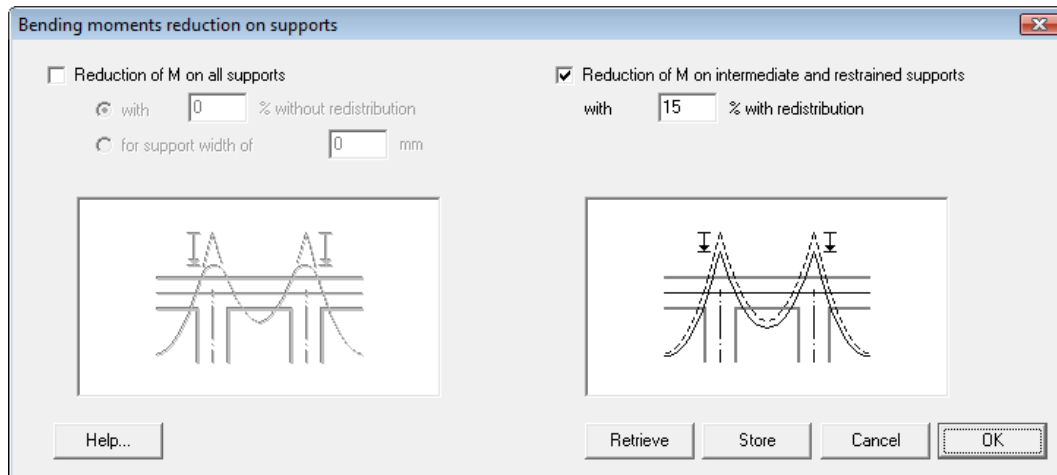


Figure 5: Moment reduction

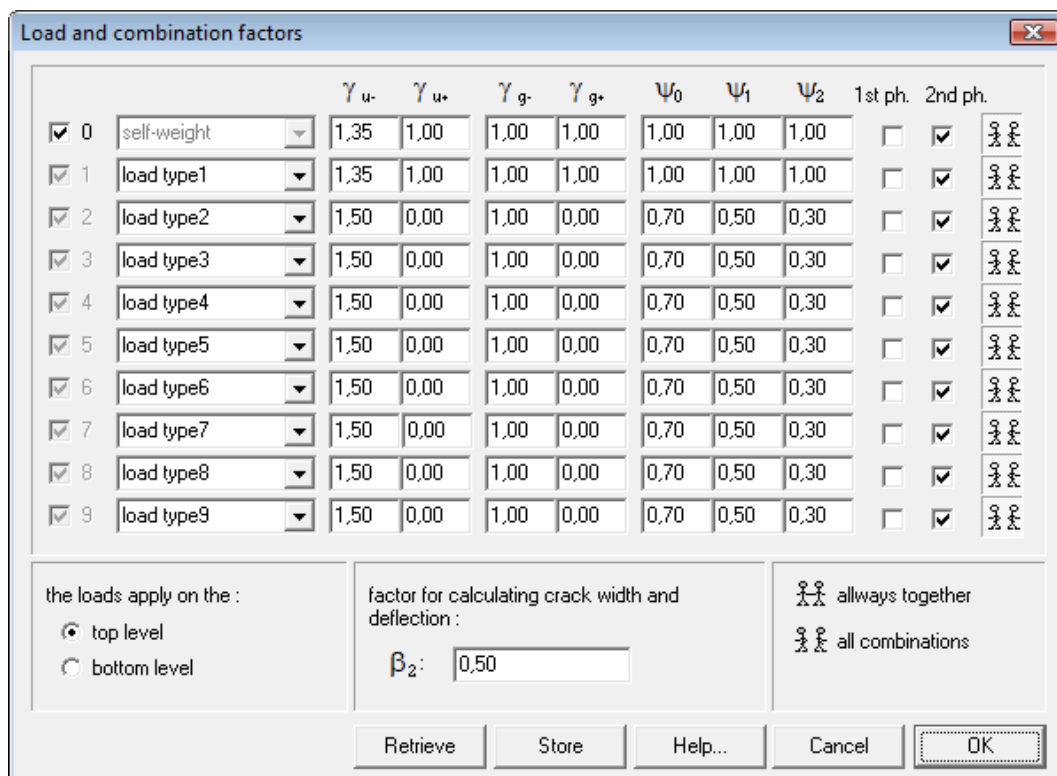



Figure 6: Safety factors and combination factors

Create this beam in the ConCrete program and save the file.

2.2. Opening a ConCrete-project

As already mentioned before, we can only draw with ConCrete Plus the reinforcement plans of elements calculated with ConCrete, PowerFrame, PowerPlate or Diamonds. We cannot create a new project with ConCrete Plus.

After having started ConCrete Plus, select the first command "**Open...**" in the menu "**File**" or click on the icon  in the icon bar. Select the saved file in the dialog box to open it.

On the left side of the screen appears in the upper side a button palette (Figure 7), while in the under side the **Project list**-window (Figure 8) appears.

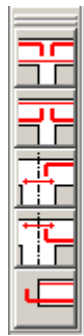


Figure 7: Palet

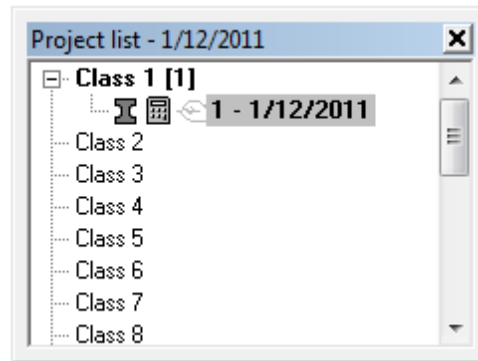


Figure 8: Project list

The **Project list**-window has the same function as in ConCrete.

2.3. Getting an element out of the ConCrete-project

Open the desired class by clicking on the +-sign or by double-clicking the class name. The list of the beams belonging to this class appears below. Double-click the first (and only) beam (see also chapter 8).

A window appears with the title "**Reinforcement plan**". The window contains 3 tab sheets. The first tab sheet "**Main drawing**" contains the drawing of the complete beam. In the following tab sheets the drawings are given per span.

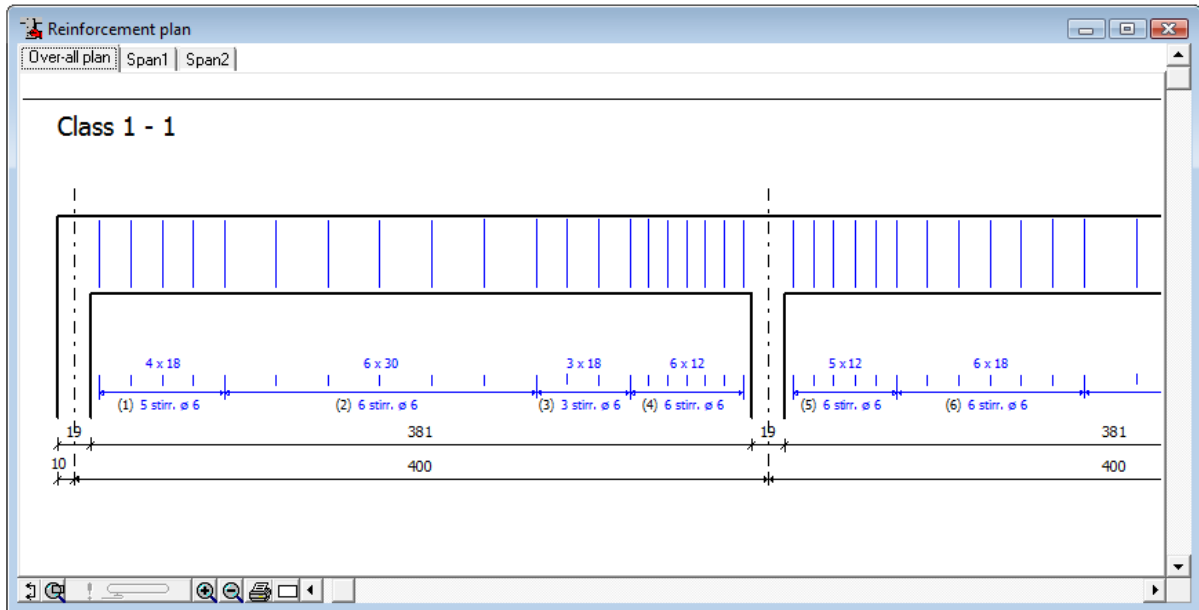






Figure 9: Reinforcement plan

You can access the reinforcement plan window at any time by clicking on the icon  or by selecting the first command **“Reinforcement plan”** in the menu **“Window”**.


At the bottom of the window, you find some functions to improve the readability and handling of the plan. With the buttons  and  you can zoom in and out, with the button  you draw a rectangle which you want to be maximised. The other icons will be explained later on in this manual.

2.4. Determining the diameters for longitudinal bars

2.4.1. The window "Diameter determination"

In the window **“Reinforcement plan”** the longitudinal reinforcement is missing. We determine this longitudinal reinforcement as follows.

*Remark: When the option **“Reinforce automatically”** is checked in the menu **“Preferences”**, than ConCrete Plus calculates a fitting reinforcement proposition. Of course, you can change this proposition by a proper choice as described in this section.*

Select the second command **“Diameter determination”** in the menu **“Window”** or click on . A new window appears with the title **“Diameter determination”** (Figure 10).

In the margins of this window, there are several buttons to improve the readability of the content. Click e.g. on the button **“x2”** in the right margin

through which the vertical scale is doubled. This is what happens before and after doubling the vertical scale:

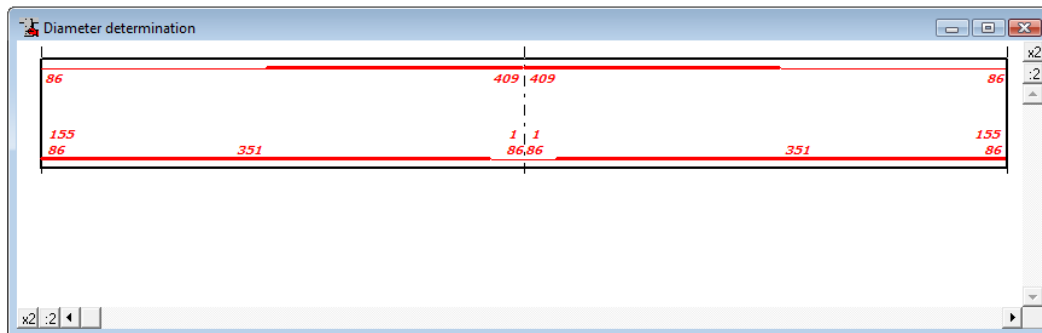


Figure 10: Diameter determination

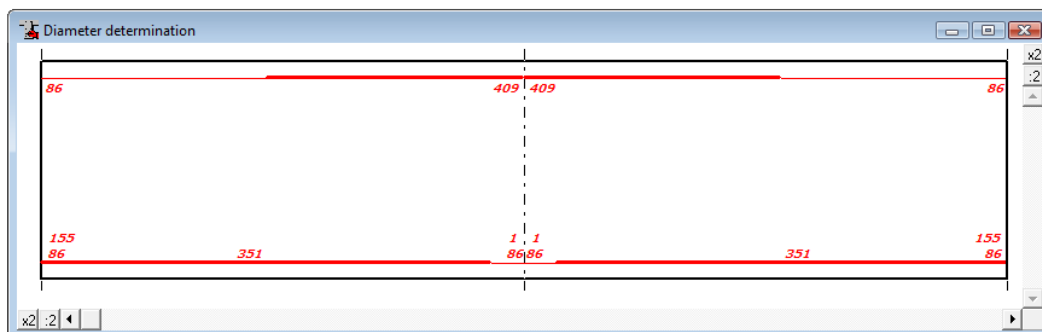


Figure 11: Diameter determination 2

The representation of the beam in Figure 11 is completely analogous with the "**Reinforcement sketch**"-window from ConCrete.

The thick lines indicate where reinforcement is required. The ending points of the thick lines are the locations of zero points of the bending moment. Strictly taken, we do not require reinforcement there where the thin lines are located. We will however always provide a minimum of longitudinal reinforcement for constructive reasons. The theoretically required reinforcement sections are indicated in outline in mm². The **anchorage sections** are indicated just above the bottom reinforcement sections, there where the supports are located. We will go on examining the matter later on (see 7.4).

2.4.2. Transposition of theoretical sections into bars

In order to transfer a certain theoretical section into a number of bars, we click with the mouse on the location of the number reflecting the theoretical section.

We will first transfer the top reinforcement sections into bars and therefore select the first top reinforcement section "86" left on top. This number is

now framed and a dialog box appears on the screen to determine the distribution of the bars :

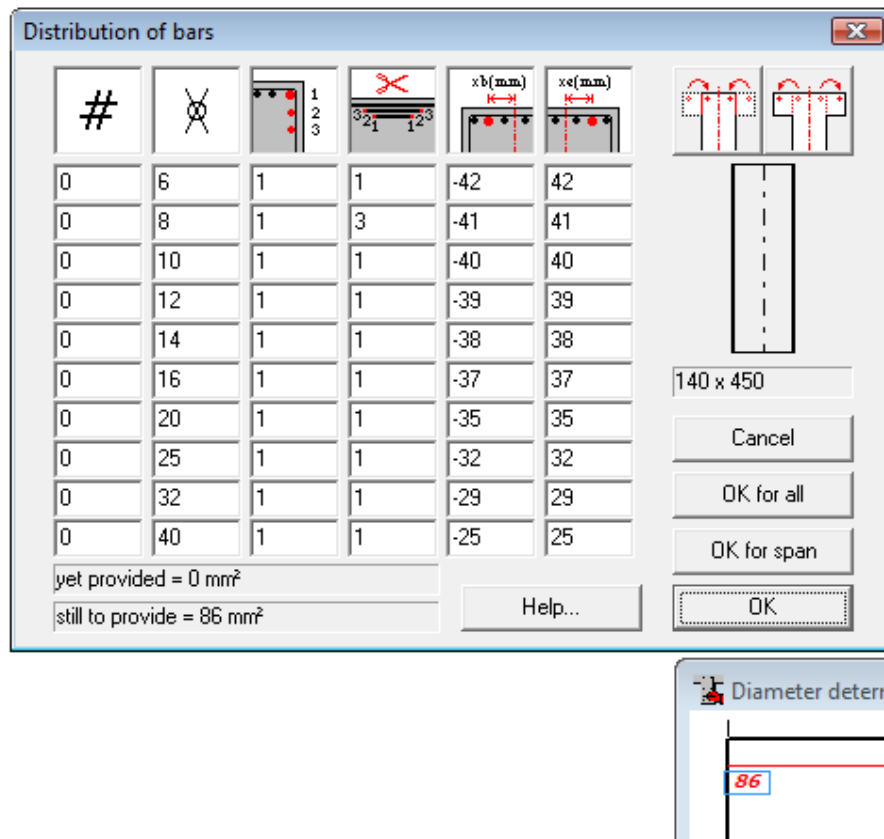
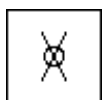


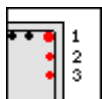
Figure 12: Diameter determination



We enter the number of bars of a certain group of bars in the first column,



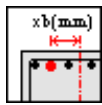
in the second column, the diameter (in mm) of these bars and



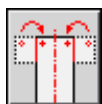
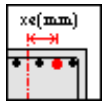
in the third, the layer in which the bars are situated.



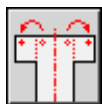
The fourth column is used for specifying the cut priorities by means of the **cut number**. The bar groups with the lowest number are cut off first. Different bar groups can of course have the same number ; in that case they will be cut off at the same time. In practice it can be useful to define bars with the same diameter in different bar groups, in order to be able to cut them differently.



In the fifth and sixth column, we finally indicate the position (in mm) of the most left, resp. right bar of the bar group versus the vertical axis of the cross section. All bars of the bar group are uniformly distributed over the distance limited by the two entered positions. If we have e.g. two bars, then one is placed in the left position (x_b) and one in the right position (x_e); if we have three bars, then the first two bars are placed as the previous two and the third one in the middle between them. Please notice that the maximum possible positions of each diameter are already entered in the fifth and sixth column.



For cross section with flanges, we can limit the maximum positions to the web width by clicking the left button above the cross section sketch,



or, on the contrary, we can extend the positions to the full flange width by clicking the right button above the cross section sketch.

In our example we take two bars with a diameter of 8 mm, located in the first layer. We enter "1" as cut number. The position of the outer bar in the group (of two bars) remains set at the maximum possible position, namely -41 and 41 mm:

Distribution of bars

#				x_b (mm)	x_e (mm)
0	6	1	1	-42	42
2	8	1	3	-41	41
0	10	1	1	-40	40
0	12	1	1	-39	39
0	14	1	1	-38	38
0	16	1	1	-37	37
0	20	1	1	-35	35
0	25	1	1	-32	32
0	32	1	1	-29	29
0	40	1	1	-25	25

yet provided = 100 mm²
still to provide = -14 mm²

140 x 450

Cancel
OK for all
OK for span
OK
Help...

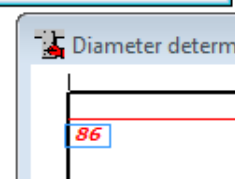


Figure 13: Diameter determination 2

When determining the number of diameters we can always check at the bottom of the dialog box how much mm² reinforcement we have foreseen and how much there is still to foresee. The reinforcement section of the bars we place in another layer than the first layer, is automatically calculated to an equivalent reinforcement section in the first layer. We have placed sufficient bars when the reinforcement section that is still to be foreseen, becomes less than the imposed tolerance (see 7.1) . A negative value indicates the surplus of mm² reinforcement versus the theoretically required section.

We confirm our choice by pressing the "**OK**" button. The indication "2 ø 8" is now above the earlier selected "86" in the "**Diameter determination**"-window ; this leads to the conclusion that we have indeed entered two bars with a diameter of 8 mm (Figure 14). The number "86" is now no longer indicated in italic.

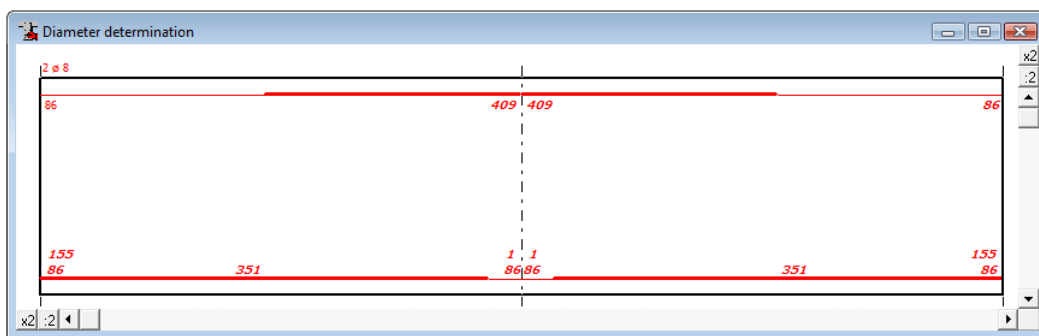


Figure 14: Diameter determination after first input

Transfer in an analogous way the second top reinforcement section into two bars of diameter 20 mm.

2.4.3. Copying bars

We also wish to foresee two bars with a diameter of 20 mm for the third top reinforcement section. We can do so by applying the same working method as in 2.4.2. There is however a quicker way. We can copy the bars we have defined for the **previous section** to the section to be converted in the following way.

Instead of immediately selecting the section to be converted, we first press the **shift-key** and keep it pressed when selecting the meant section with the mouse.

No dialog window appears on the screen, but the bars of the previous section are immediately copied to the selected section. We can notice this by means of a different cursor :



Figure 15: Cursor for copying bars

This cursor inform us that the bars of the previous section are copied. If we want to copy the bars of the **next section** we apply the same working method only now we press the **control-key** instead of the shift-key. The little hand now points to the right, in other words, to the next section.

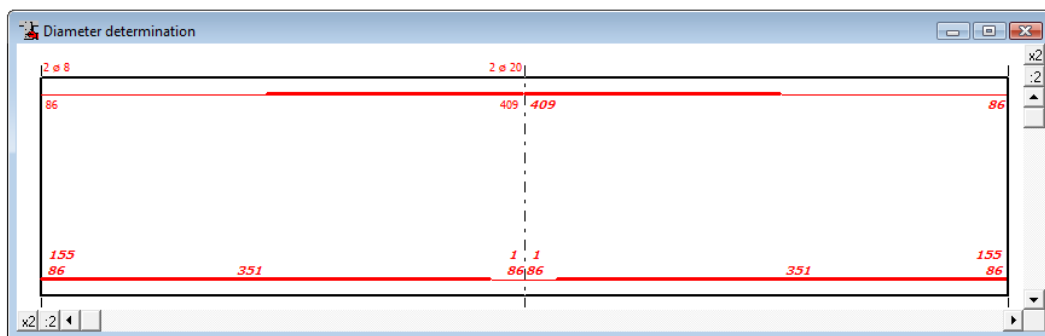


Figure 16: Diameter determination after copying bars

2.4.4. Determination of bar lengths

We transfer all the reinforcement sections to the reinforcement bars using the working method explained in 2.4.2 and 2.4.3 (Figure 17). Once this transfer is finished, ConCrete Plus automatically calculates the lengths of the different bars and completes the window "**Reinforcement plan**" (Figure 18).

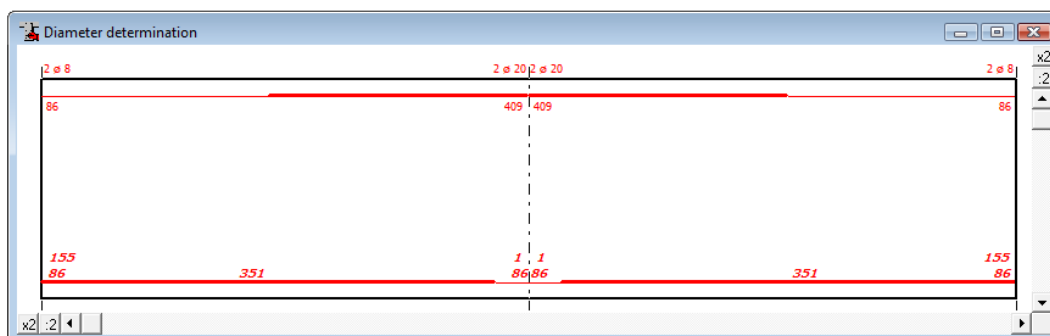


Figure 17: Diameter determination with top reinforcement ok

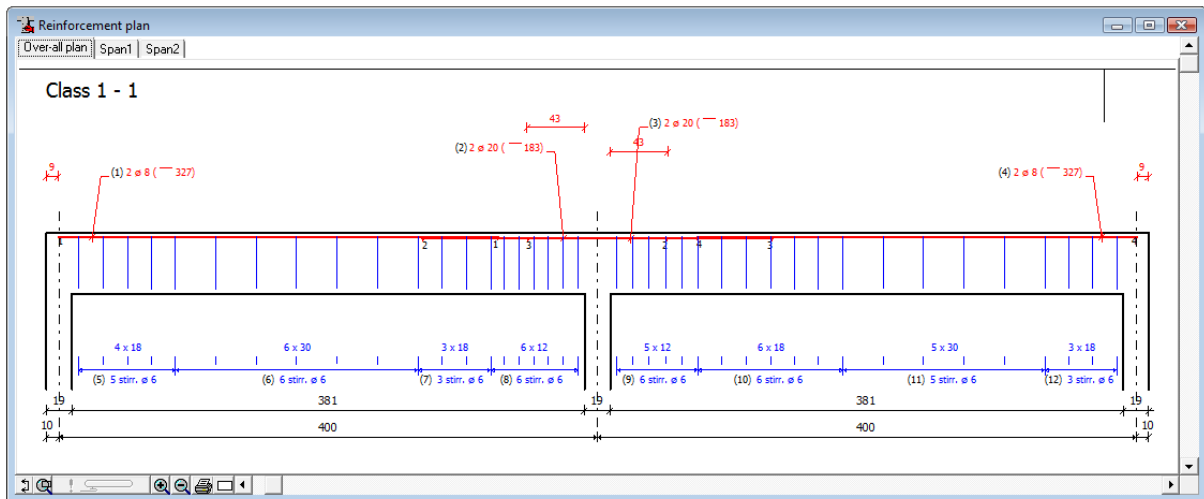


Figure 18: Reinforcement plan with top reinforcement ok

If we apply the same working method to determine the bottom reinforcement bars, we get a first reinforcement plan (Figure 19).

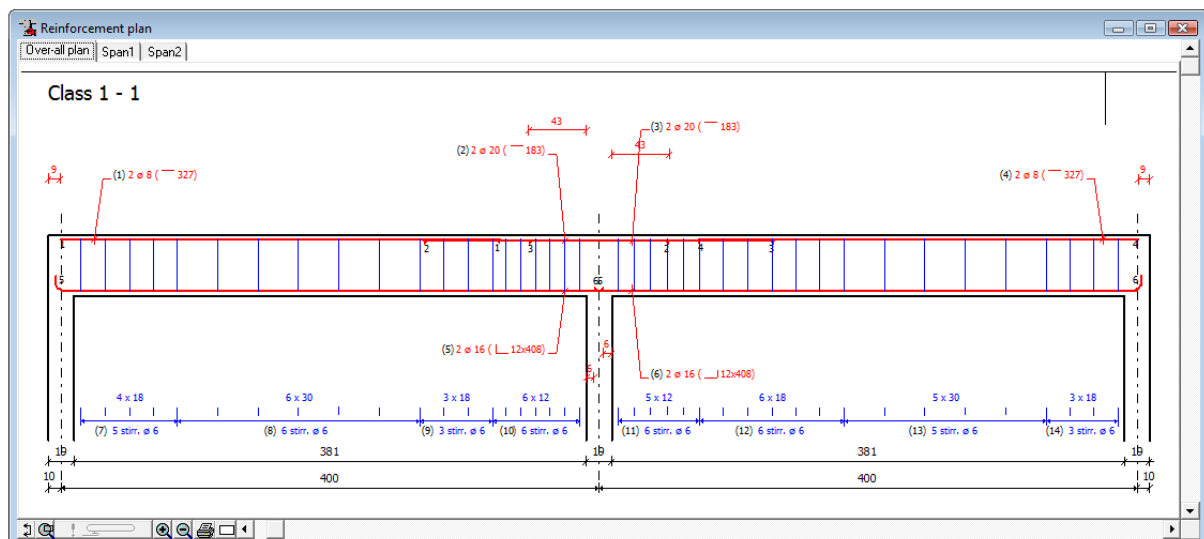


Figure 19: A first reinforcement plan

If one practical bar choice can be applied for the whole beam (i.e. for all spans), this can be realised by clicking in the dialog box for the diameter determination on the button **"OK for all"** instead of on the button **"OK"**. This spares you from copying bars. Note that by indicating different cut numbers certain bars are only put where needed. ConCrete Plus detect these places itself.

In the same way, by means of the button **"OK for span"**, you can apply a bar choice (for bottom or top reinforcement) to all the sections of the selected span.

2.5. Entering geometrical data

We saw in ConCrete that we could set a certain **tolerance** for the **difference in dimensions** between the drawing in ConCrete Plus versus the calculation. Through the command "**Dimension tolerances**" in the menu "**Preferences**" we can call again this dialog box.

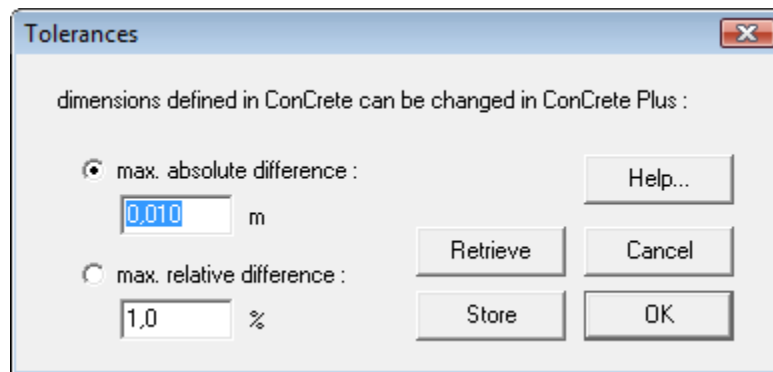


Figure 20: Tolerances between ConCrete and ConCrete Plus

Let us assume that we had set this tolerance in ConCrete at 1 cm; we can now modify the dimensions of the **span lengths** and **zone lengths** in ConCrete Plus 1 cm versus the values in ConCrete. A recalculation of the bar lengths and stirrup zones is done automatically and the determining diagrams are flattened in the length. The vertical values are not flattened (the values of the static quantities). When changing the span length, the distance between the supports is also modified.

We can easily modify a **span- or zone length** by selecting that value with the mouse in the window "**Reinforcement plan**". This value appears in the input bar with the belonging question. We can now enter a new value by means of the keyboard and confirm this value with the ENTER- or RETURN-key. Only values within the set tolerance are accepted.



Figure 21: Input of span length

Except for the span- and zone lengths, we can also modify the **width of the supports** (drawn as columns). For each new element that has to be drawn, ConCrete takes a width of 19 cm for each support. We can change this value freely in an analogous way as the span- and zone lengths. Half the width of a support cannot exceed the half of a span.

All supports are placed symmetrically versus the axes which determine the span lengths, except for the end supports. End supports can be placed

asymmetrically and their position is in consequence determined by two values: the width on the left hand side of the end axis and the width on the right hand side of that axis. If we change the wide of a support, the program automatically recalculates the different bar lengths and redistributes the stirrups between the supports.

When placing the stirrups, the first and the last stirrup zones of a span are decreased in length according to the width of the support. We however notice that no complete recalculation takes place which redetermines the first shear force crack, starting from the width of the support and out of that calculates new distances and diameters from the stirrups. Fundamental calculations take place in ConCrete and not in ConCrete Plus.

Practically seen the working method used here has the same result as a complete recalculation when the length, across which the stirrup distance is kept constant, approximates half the width of the column. As this length deviates from this width, the used working method may give a slightly different result, which is however at least as safe.

If we modify in our example the span lengths of 4.00 m to 4.01 m, and bring the width of the intermediate support to 60 cm, our reinforcement plan looks as visualised in Figure 22.

We notice that the program automatically selects the next value after we have changed a certain value. This means that we can quickly change the different data.

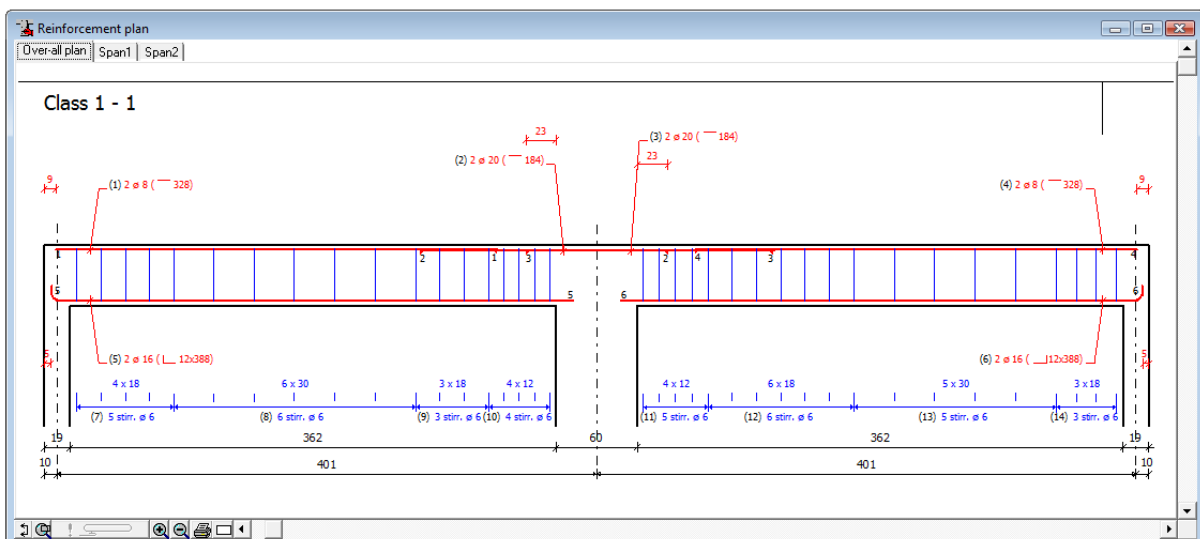


Figure 22: Reinforcement plan after modifying geometry

2.6. Support characteristics

Click with the right mouse button in the window "**Reinforcement plan**" to open the dialog box "**Support characteristics**". In this dialog box a number of characteristics of the different supports can be modified.

In the upper part of the dialog box, the dimensions of the supports as drawn in ConCrete Plus are represented. Here you can also change the vertical dimensions of the supports.

Further on, you can decide whether the support will be executed as a direct support or more as an indirect one (the reaction does not directly go to the foundation, e.g. the support is a beam). Is it a direct support, than the anchorage lengths of the bars will be reduced with a factor 2/3.

Finally, there is an option to continue the transverse reinforcement (stirrups and web reinforcement) to the axis of the support.

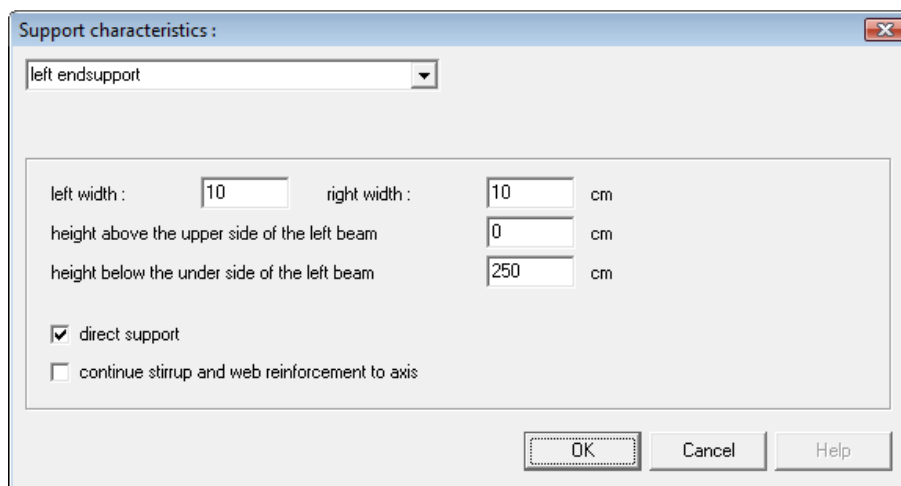



Figure 23: Support characteristics

Chapter 3 Cross sections

3.1. Creating cross sections

So far we have represented our beam only in longitudinal view. In practice we will also make a certain number of cross sections over the length of the beam, to illustrate the position of the bars in the cross section. In ConCrete Plus the maximum number of cross sections per element is 26. The position of the cross sections can be chosen freely over the length of the beam, knowing that we cannot make a cross section that goes through a support.

We use the following working method in order to make a cross section. We click with the mouse in the bottom left corner of the window "**Reinforcement plan**" (). We then move the mouse over the front view of the beam. When moving the mouse, we see a vertical line that follows the position of the mouse appearing in the window. Note that cursor changes when the position allows a cross section or not.

Click on the position where you want to have a cross section and ConCrete Plus automatically generates a cross section through the beam at the position of the vertical line. The drawing of the cross section appears beneath the longitudinal view (Figure 24).

The position of the stirrups and the longitudinal bars and the dimensions of the beam are indicated on this cross section. It is important to know that these cross sections are adapted each time there is a modification in the reinforcement.

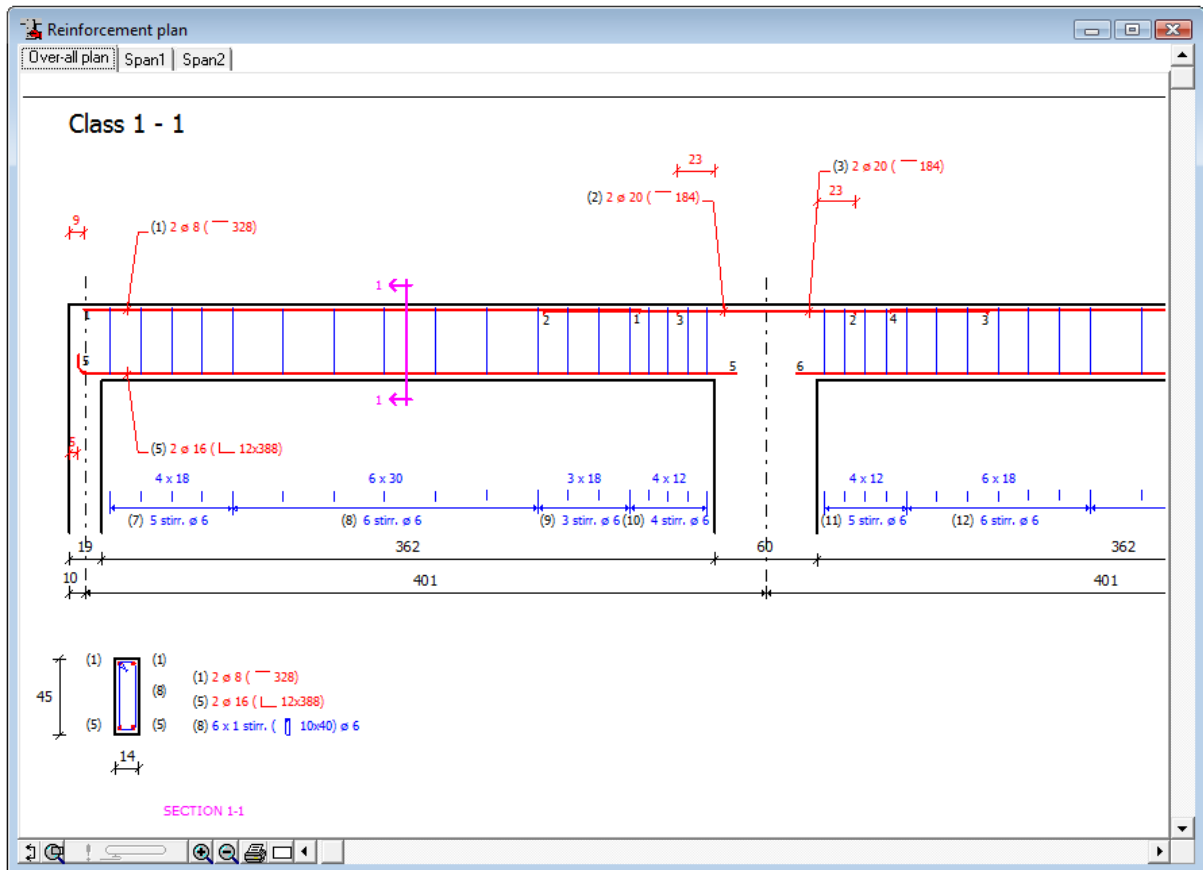


Figure 24: Reinforcement plan with cross section 1-1

If we make several cross sections, they are automatically numbered from the left to the right, regardless the order in which they have been created.

3.2. Observation direction

When making a cross section in ConCrete Plus we have the choice to look left or right from the set position. To change the direction in which we are observing the cross section, we select the choice **"left"** or **"right"**, according to the case, in the menu **"Cross sections"** under submenu **"Look to the"**. The observation direction is the same for all cross sections. If we change the observation direction at a certain moment, it is changed for all cross sections already made.

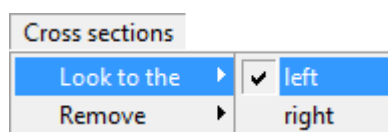


Figure 25: Changing the observation direction

3.3. Removing cross sections

If we wish to remove a certain cross section, we select its number in the menu "**Cross section**" under submenu "**Remove**".



Figure 26: Removing a cross section

The program removes the selected cross section and adjusts the numbering of the following sections.

Cross sections are automatically removed by the program when, at a certain moment, their position exceeds the length of the element or is within the measurements of a support. This can happen when the width of a support or the length of a span or a zone is changed.

Chapter 4 Comments on the plan

4.1. Introduction

So far we did not care about the text and explanation that the program automatically places with the drawing. In practice, each engineering office has its own way of making representations. Therefore ConCrete Plus has been provided with various possibilities to clarify the drawing with the necessary information. In this chapter we will learn how to determine what information is placed at what location on the plan.

4.2. Bar legend

The symbol to use for indicating the bar diameter can be set by the command "**Bar legend**" under the submenu "**Comments**" in the "**Lay-out**" menu.

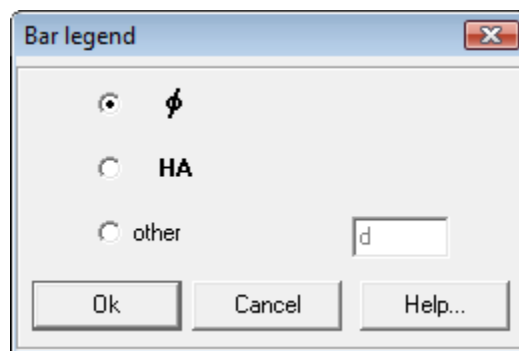


Figure 27: Bar legend

In the third option 'other' the use can define the symbol by himself.

4.3. Stirrups

If we wish to change the information of the stirrups in longitudinal view, we select the first command "**Stirrups...**" in the menu "**Lay-out**" under the second submenu "**Comments**". The dialog box of Figure 28 is now visualised on the screen.

We can indicate by means of a check box whether or not we want the stirrups to be drawn in the longitudinal view. With the pull down menu we can indicate how many stirrups should be drawn per zone. We have different choices:

- drawing all stirrups
- drawing 1 stirrup per zone (in the middle of the zone)
- drawing 2 stirrups per zone (one at the beginning and one at the end of each zone)

- drawing 3 stirrups per zone (one at the beginning, one in the middle and one at the end of each zone)

In the square left on top we can indicate by means of four radio buttons to what line (related to the dimensioning line) we wish to give what information. The different possibilities for this information are indicated in the big rectangle on the right. We change the information on the indicated line by selecting another radio button in the right rectangle.

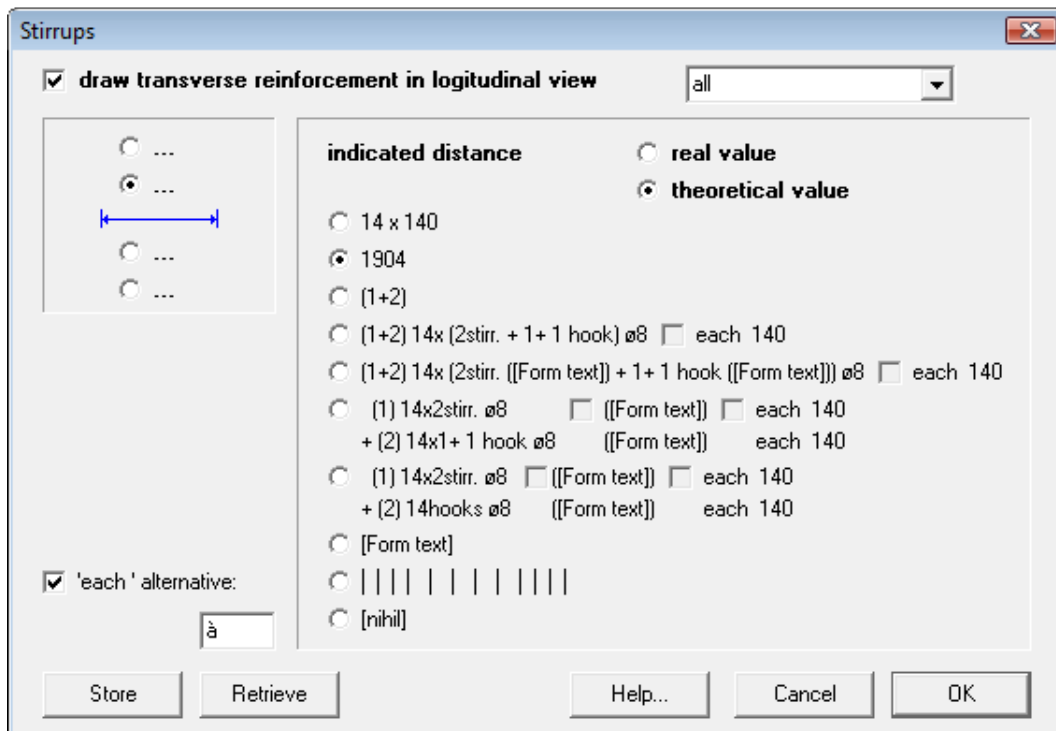


Figure 28: Stirrups

The **theoretical distance** is the distance between the stirrups as it was calculated by ConCrete, in other words without taking into account whether the total distance is a multiple of the distances. The **real distance** is the distance we obtain by dividing the length along which the theoretical distance is valid, by the number of stirrups.

With the last but one radio button we can let the program draw vertical lines on the desired line, at the place of the horizontal position of the stirrups.

In the edit field at the left bottom side, we can enter an alternative for "each".

The meaning of the buttons "OK", "Store", "Retrieve" and "Cancel" is similar to the signification in ConCrete. Actual settings are confirmed by pressing the "OK" button. They can be set as standard settings by pressing the "Store" button. If the actual settings are different from the

standard settings, they can be set equal to the standard settings by pressing the **"Retrieve"** button. The button **"Cancel"** does not change the actual settings. The standard settings are saved when ending the program. When starting the program, the standard settings are drawn up and immediately become the actual settings.

For the explanation of "[Form text]" we refer to 4.6.

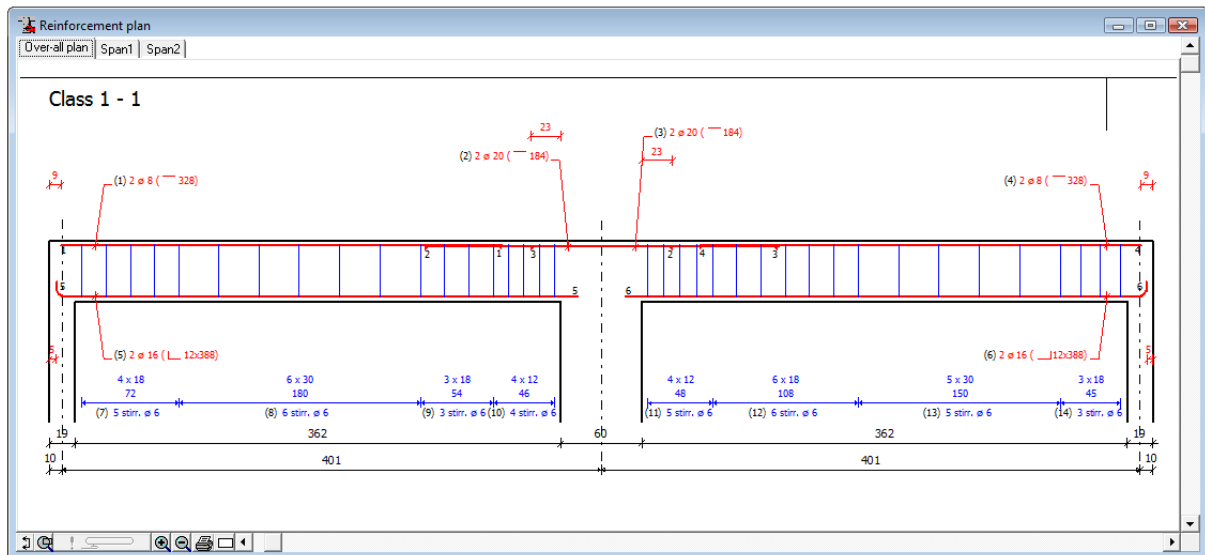


Figure 29: Reinforcement plan with alternative stirrup comment

If we e.g. change the information on the second line to the first information choice (with the first radio button), our reinforcement plan looks as visualised in Figure 29.

Font type, font size and the number of the layer on which the information will be placed in general CAD software are set by selecting the fourth command **"Stirrups..."** in the menu **"Lay-out"** under the first submenu **"Representation"** (see 5.5).

4.4. Bars

We select the second command **"Bars..."** in the menu **"Lay-out"** under the submenu **"Comments"** if we wish to modify the information of the bars in the longitudinal view. The following dialog box now appears on the screen:

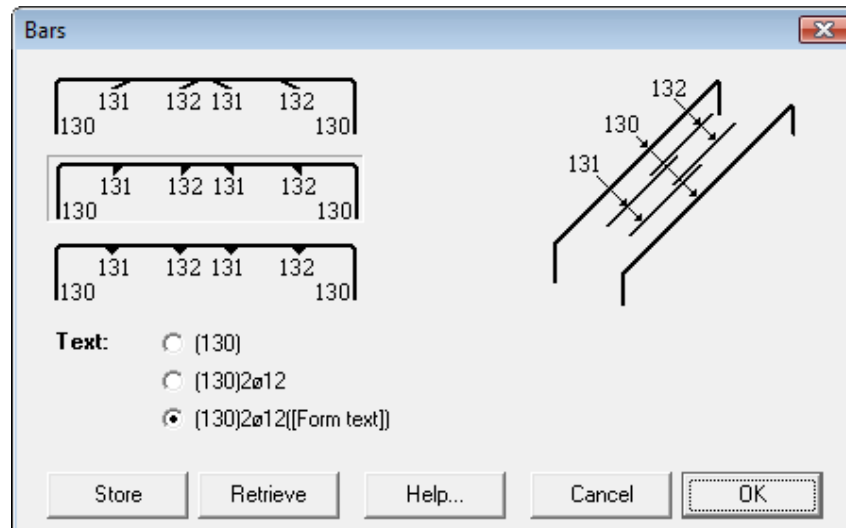


Figure 30: Bars

We can indicate by means of three radio buttons how we wish to represent the end of a bar when several bars overlap one another. Furthermore, we can also indicate what information we wish to add to those bars. For the determination of the style, we refer to chapter 5.

The meaning of the buttons "**OK**", "**Store**", "**Retrieve**" and "**Cancel**" is the same as in 4.3.

For the explanation of "[Form text]" we refer to 4.6.

4.5. Cross sections

We select the fourth command "**Cross sections...**" in the menu "**Lay-out**" under the submenu "**Comments**" if we wish to modify the information of the bars and the stirrups in the cross sections. The following dialog box is now visualised on the screen:

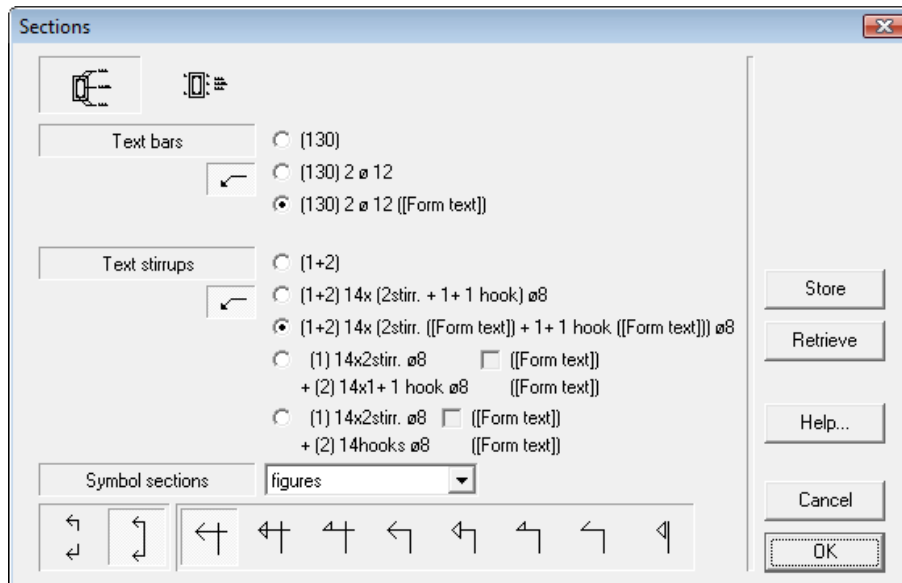


Figure 31: Cross sections

Indicate just like in 4.3 and 4.4, which information should be placed on the plan. The buttons under "**Text bars**" and "**Text stirrups**" serve for whether or not using indication lines to the bar or to the stirrup. The choice possibilities for the information are analogous to those for the longitudinal view.

By clicking on one of the cross section representations at the top of the dialog box, we can change the representation of the cross section. We can choose between an indication of the reinforcement according to the position in the cross section (whether or not with indication lines) or an indication of the reinforcement by placing the number of the list immediately with the cross section drawing and a list next to it with in order the numbers of the list and their belonging information. The cross section drawing looks as visualised below if we choose the first possibility:

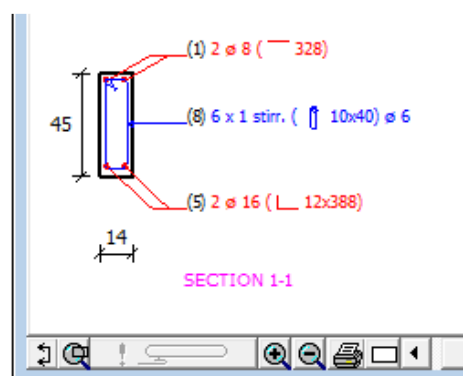


Figure 32: Cross section 1 alternative representation

A pull down menu offers the possibility to indicate the cross section with figures, capital letters or small letters. We can also choose whether the section indication should be drawn of the whole height of the beam or just in the region of the upper and lower fibres. There are also a lot of possibilities to represent the observation direction of the cross section.

The meaning of the buttons "OK", "Store", "Retrieve" and "Cancel" is the same as in 4.3.

4.6. Form text

Up till now, the form of the reinforcement in the comment is always represented by a drawing. Instead of such a drawing, it's also possible to put a text that indicates the form of the bar : e.g. R 1500 indicates a right bar with a length of 1500 mm, L 140x1500 a bar with a length of 1500 mm and a hook of 140 mm, etc. The choice of the text can be set by the last command "Form text..." in the submenu "Comments" from the "Lay-out" menu. The following dialog box appears:

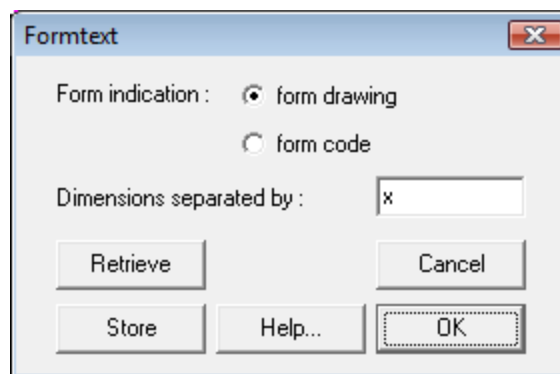


Figure 33: Form text

Here we can choose to indicate the form by a drawing or by a code. We will see in 4.7 how these codes can be set. The form indication will be followed by the different dimensions (fold lengths) of the bar, separated by a fixed text, which can also be set by the user (e.g. " x ").

The meaning of the buttons "OK", "Store", "Retrieve" and "Cancel" is the same as in 4.3.

4.7. Bar codes

The bar codes are the codes used to indicate the type of the bar form. These bar codes can be set by selecting the command "Bar codes..." in the "Lay-out" menu. The following dialog box appears on the screen:

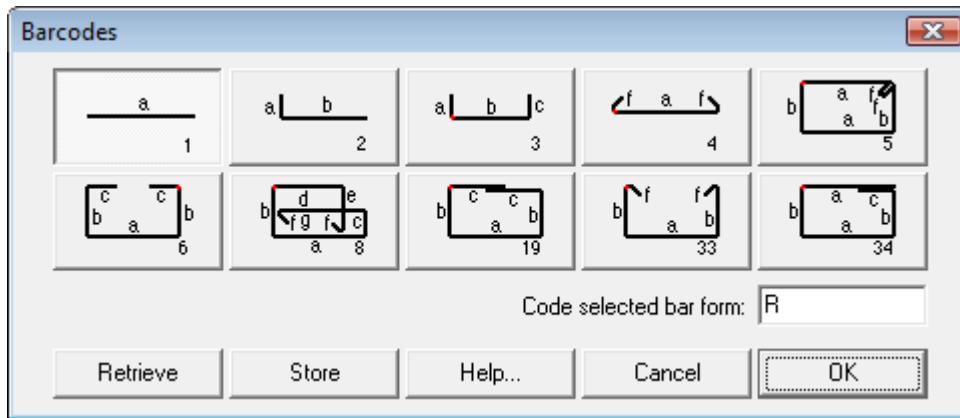


Figure 34: Bar codes

In this form you can indicate which code to use for which form. Select a form and type the desired code in the edit box. The bar codes have no restrictions. One bar code be used for different forms. The sequence of the dimensions in the form text (see 4.6) corresponds to the alphabetical order of the with letters named fold lengths.

The meaning of the buttons "**OK**", "**Store**", "**Retrieve**" and "**Cancel**" is the same as in 4.3.

Chapter 5 A proper representation

5.1. Introduction

We now already know how to generate a plan from a beam calculated with ConCrete and how to add the desired information. Of course we do not only want to determine what information we wish to add to the plan, but also how we will represent that plan. In this chapter we will learn how to indicate for each kind of line a proper thickness, type, colour and dimensioning.

5.2. Defining your own styles

In ConCrete Plus at maximum 30 styles can be defined. Select the first command **"Style definition..."** in the **"Lay-out"** menu; the following dialog box appears on the screen :

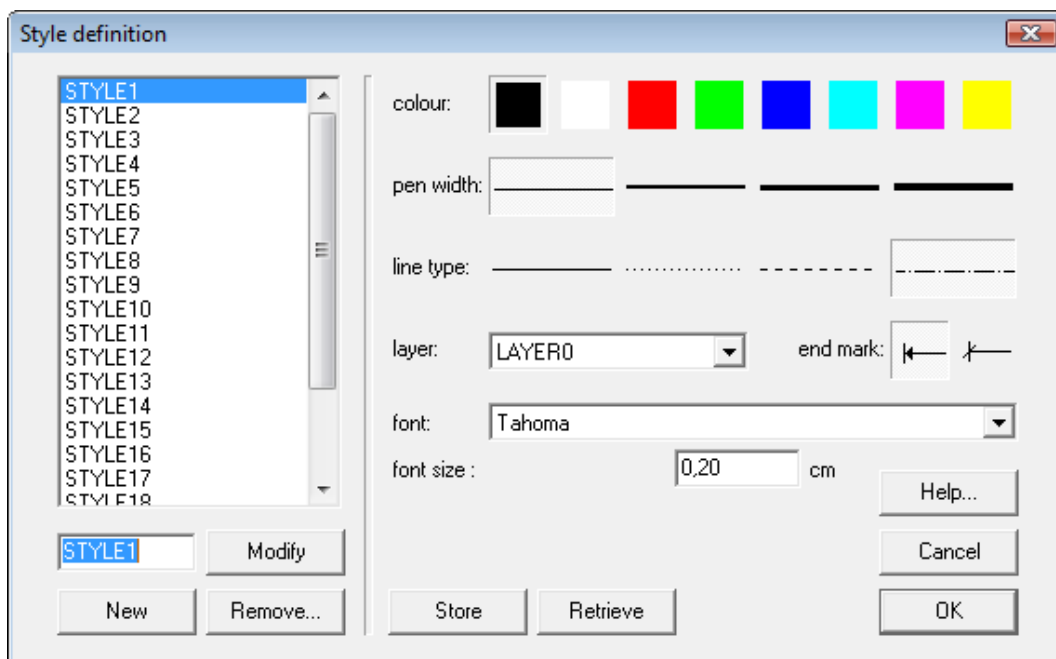


Figure 35: Style definition

Each style has its own properties. In the list at the left are the names of all defined styles. At the right, the properties of the selected style are shown; here for style "STYLE1".

Each style is characterised by a certain colour, pen width and line type. The chosen characteristics are framed. Here the colour of STYLE1 is black, the pen width a thin line and the line type a dot-dash-dot. With a pull down menu, the layer (see 5.4) can be chosen on which elements drawn in this style will be put. This layer will also be used by the transfer (e.g. by DXF) to a generalised CAD-program.

End marks can be an arrow or an inclined dash; these can be the end marks from a dimensioning line or from a reference line to the comment to reinforcement elements.

Finally, you can define the font type and font size. The font size is used within ConCrete Plus, but is also used for direct printing and for the transfer (e.g. in DXF) to other CAD programs. For this transfer, the font size will correspond only if the same scale is used in the CAD program as the one that was set in ConCrete Plus (see 11.1.3). When another scale is used, the font sizes will be adapted with the same proportion.

Styles which are not used by any element, can be removed by selecting them in the list and clicking on the button "**Remove**".

The name of the style can be changed by entering a new name in the edit box beneath the list and then clicking on the button "**Rename...**".

As long as the number of defined styles is less than 30, new styles can be added by typing a new name in the edit box and clicking on the button "**New...**".

The meaning of the buttons "**OK**", "**Store**", "**Retrieve**" and "**Cancel**" is the same as in 4.3.

5.3. Selecting styles

The next step is to assign elements to the dedicated styles.

Select the second command "**Style choice...**" in the "**Lay-out**" menu. The following dialog box appears on the screen:

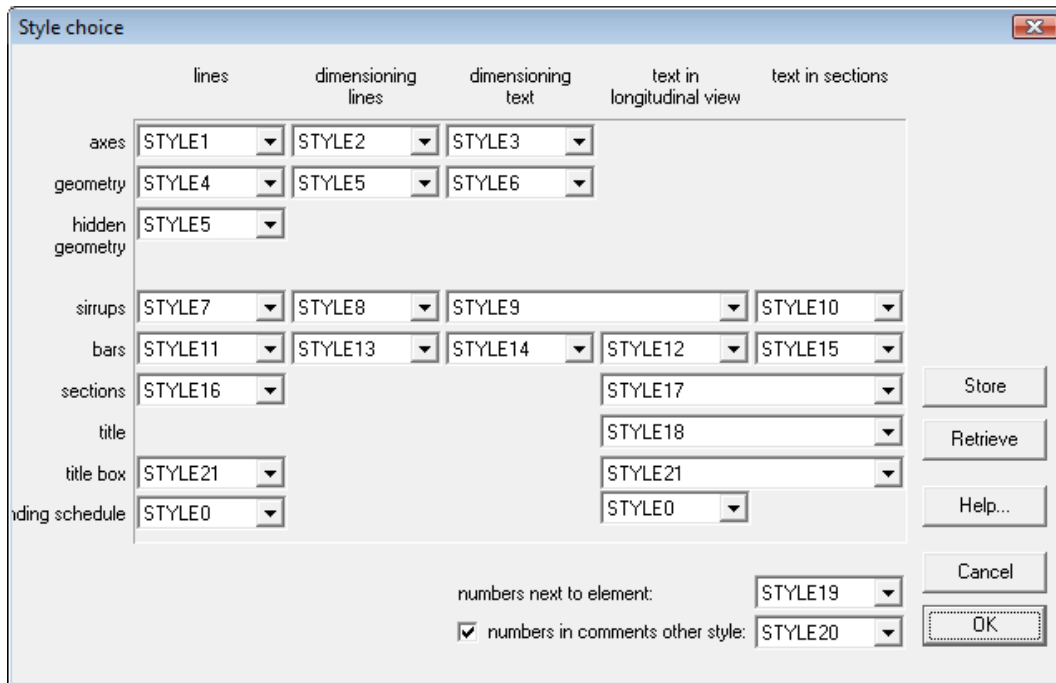


Figure 36: Style choice

With the help of pull down menus, you can assign a style to the different elements in the drawing. In these pull down menus, only the styles defined in 5.2 are listed.

With "**hidden geometry**" the flanges who are at the backside of the beam are meant. The "**numbers next to element**" are the numbers that are put at the begin- and endpoint in the longitudinal view and the number that are put by the reinforcement elements in the cross section when the representation with the list is chosen (see 4.5). For the meaning of the title box, we refer to 10.1.

To represent all reinforcement numbers in the same style, there's the option "**numbers in comments other style**".

For the meaning of the buttons "**OK**", "**Store**", "**Retrieve**" and "**Cancel**" we refer to 4.3.

5.4. Layer names

To included drawings of ConCrete Plus in a generalised CAD program, it's not only important to use the same representation (style), but also it's the best to use the same layer names.

To be able to define these layer names, select the fourth command "**Layer names...**" in the "**Lay-out**" menu. The following dialog box appears on the screen:

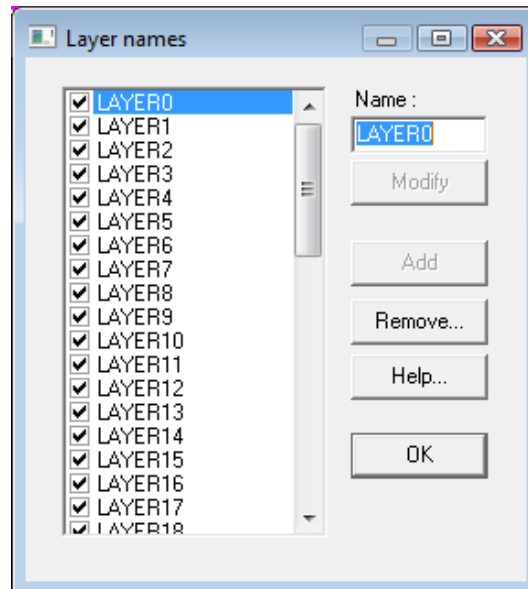


Figure 37: Layer names

In the list at the left are the names of all defined layers. When you select a layer in this list, the name will be put in the edit box.

You can change the name of the layer, by changing the name in this edit box and clicking on the button "**Modify**".

To add a new layer, just type the name of the new layer in the edit box and click on the button "**Add**"; the layer that was selected will keep its name. The number of layers is restricted to 50. All letters will be automatically translated into capital letters.

If a layer is no longer needed (in other words there is no style defined that uses this layer) , this layer can be removed by selecting it in the list and clicking on the button "**Remove...**".

5.5. Setting the background colour

To change the background colour, select the third command "**Background...**":

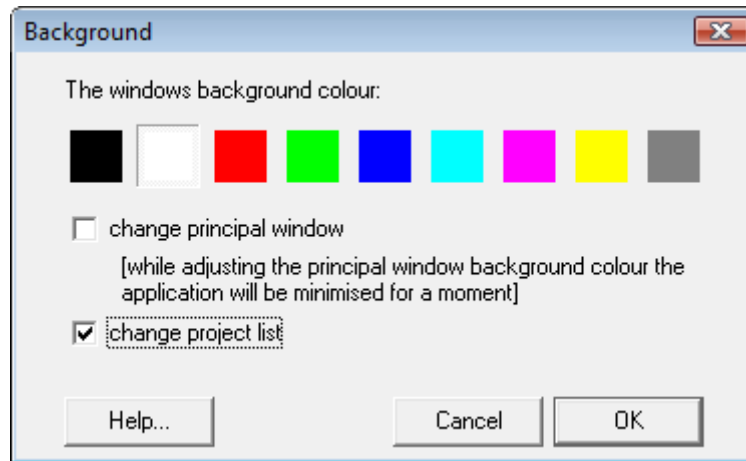


Figure 38: Background colour

5.6. Positioning of the title frame

The position of the title frame with the administrative data can be defined. In the submenu “**Title frame position**” of het “**Lay-out**” menu, you can choose between “left” of “right”. The title frame is always set at the bottom of the plan.

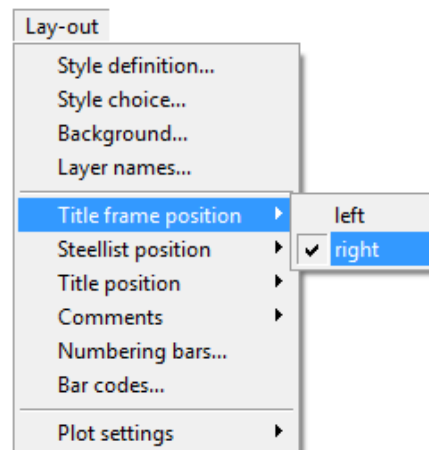


Figure 39: Setting the title frame position

5.7. Positioning of the bar bending schedule

The position of the bar bending schedule on the plan can be set by the command “**Lay-out**” - “**position of the bar bending schedule**”. You can align the list with the top or the bottom of the plan.

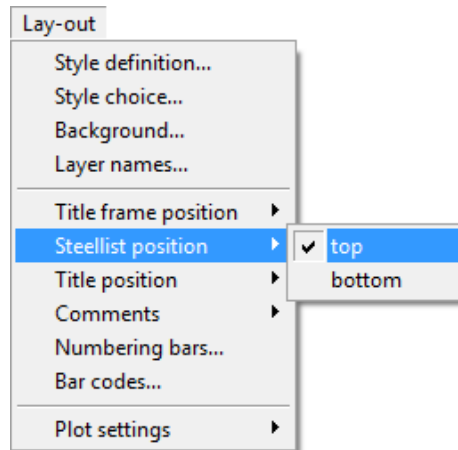


Figure 40: Setting the Bar bending schedule of the bar bending schedule

5.8. Positioning of the title

Under the submenu **"Title position"** of the **"Lay-out"** menu, you can indicate the desired position of the beam name (= title) in relation to the longitudinal view. You can put it at the left top, right top or centre top.

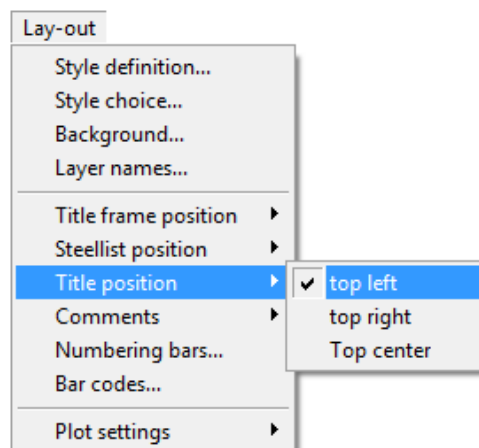


Figure 41: Setting the title position

Chapter 6 Units and precision

6.1. Introduction

So far we did not care much about the units of our drawing and the precision with which we indicate the different dimensions. In this chapter we will learn how to set both.

6.2. Units

ConCrete Plus offers you the possibility to set our own units. To change the units, select in the menu "**Preferences**" under the first submenu "**Units**" the desired units. Automatically, all dimensions in the window "**Reinforcement plan**" are set in the selected unit. It doesn't matter at what moment the units are set.

6.3. Precision

Select in the menu "**Preferences**" under the second submenu "**Precision**" the desired option. Again, all dimensions are automatically adapted. Setting the precision to mm, will change the window "**Reinforcement plan**" as follows:

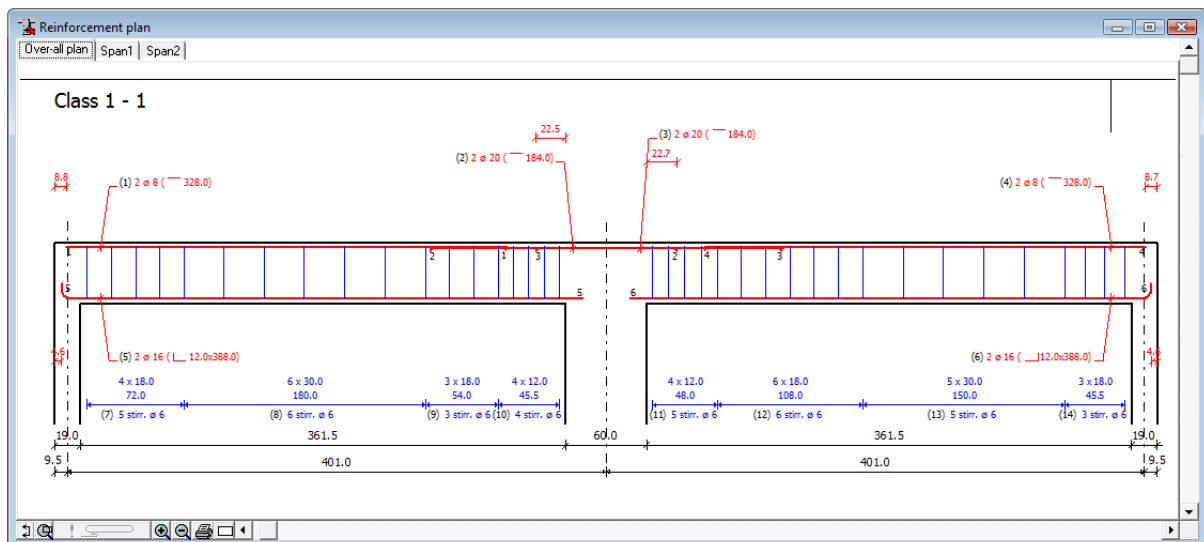


Figure 42: Reinforcement plan with precision in mm instead of cm

6.4. Possible combinations

The possible choices for the units are m, cm and mm; for the precision the units are cm and mm. It is however not possible to combine each unit with each precision. The possible combinations are indicated in table 1.

Unit	Precision
m	cm
	mm
cm	cm
	mm
mm	mm

table 1

Chapter 7 Modifying the reinforcement

7.1. Bar tolerances

Suppose that the units and accuracy are set to cm. In that case all rod lengths are presented in cm and up to 1 cm accuracy.

In practice, bar lengths will be a multiple of 5 cm for example. Units and accuracy remain determined to cm. Select in the menu "**Preferences**" the last command "**Bar tolerances ...**" to make the length of the bars a multiple of 5 cm. The screen displays the following dialog:

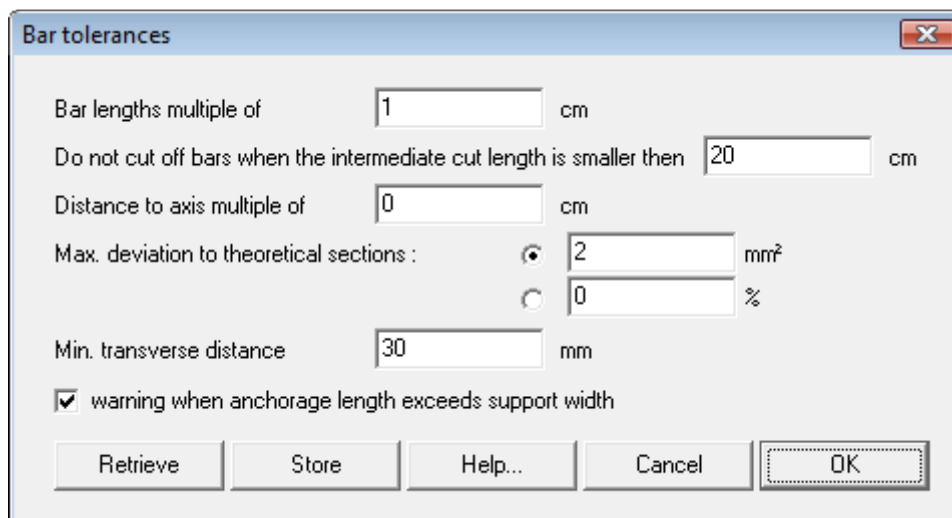


Figure 43: Bar tolerances

Enter in the dialog box the unit distance for the bar lengths and their distance to the nearest axis. Enter also the minimum intermediate length between two parts of a bar. Gaps smaller than the given value will not be cut out.

Further on, the maximum deviation to theoretical required reinforcement section can be set, either by a maximum absolute value or by a maximum relative value (percentage). These maximum deviation is only checked for values lower than the required value. Suppose that we need a theoretical reinforcement amount of 406 mm². In practice, we would provide e.g. 2 bars Ø 16 (= 402 mm²). Strictly speaking, those 2 bars Ø 16 are insufficient. By setting a maximum deviation, we can force the program to accept it as sufficient.

Also the minimum transverse distance can be set. Anyway, the program will always check that the centre-to-centre distance of bars is at least twice the diameter (net distance = diameter).

Strictly speaking, it is not allowed that the support widths be less than the values that follow from the required anchorage lengths from the bars that are anchored in the support. Because this anchorage length is at the

minimum 10 Ø, possibly reduced by a factor 2/3 for direct supports, this means that bars Ø 25 can't be anchored on a support with a width of 19 cm. Since this, according to Eurocode 2 "practical", rule in practice seems to be rather unpractical, ConCrete Plus allows you to just get a warning that the support should be wider, but the program will however generate the reinforcement drawing. Note that the acceptance of a smaller support width is not strictly allowed by Eurocode 2! Even more, these warnings can be eliminated by checking the checkbox, to avoid annoying messages that decreases the productivity.

Enter 5 cm as unit length for the bar length and 1 cm for the unit distance to the nearest axis. Confirm with the "OK"-button. ConCrete Plus recalculates automatically the bar lengths. To get the theoretical required bar length again, see 7.5.

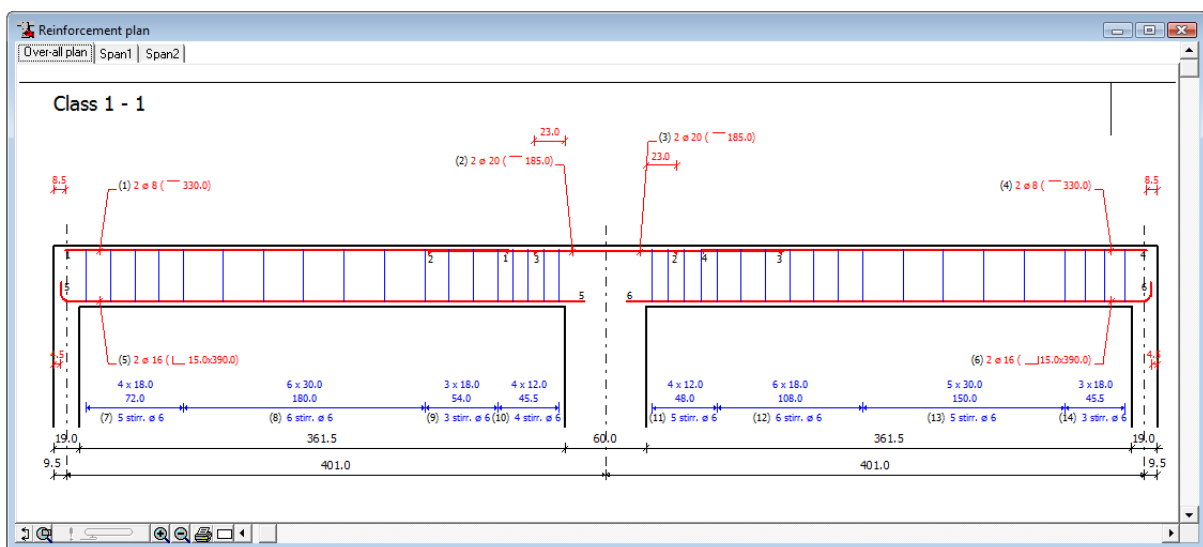


Figure 44: Reinforcement plan – bar tolerances changed

When rounding bar lengths to a multiple of 5 cm, the bars lengths are increased till the first multiple of 5 cm, unless the theoretical length is not more than 2 mm bigger than the previous multiple. In case the bars need to be extended, they are, as far as possible, as much extended to the left as to the right.

Bars which are not a multiple of the indicated unit length and which cannot be extended sufficiently, because otherwise they would not have sufficient concrete cover or, worse, would exceed the element, are not extended at all.

For the meaning of the buttons "OK", "Store", "Retrieve" and "Cancel" we refer to 4.3.

7.2. Continuous or discontinuous bars on supports

In practice it is often interesting not to let the bars continue over the entire beam length, but to consider them per span (think about prefabrication). In ConCrete Plus we can indicate as well for the bottom – as for the top reinforcement whether or not the bars on the supports can continue.

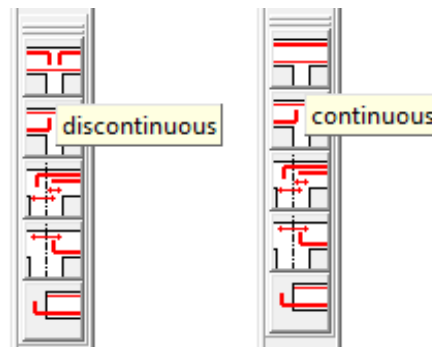


Figure 45: Continuous or discontinuous bars on supports

Click with the Mouse in the pallet on the button until the desired option appears, e.g. (top reinforcement) 'continuous'. ConCrete Plus automatically recalculates the top reinforcement and the bars (2) and (3) of Figure 43 are replaced by one bar (2). The numbering of the other bars is automatically adapted. The reinforcement drawing now looks as follows:

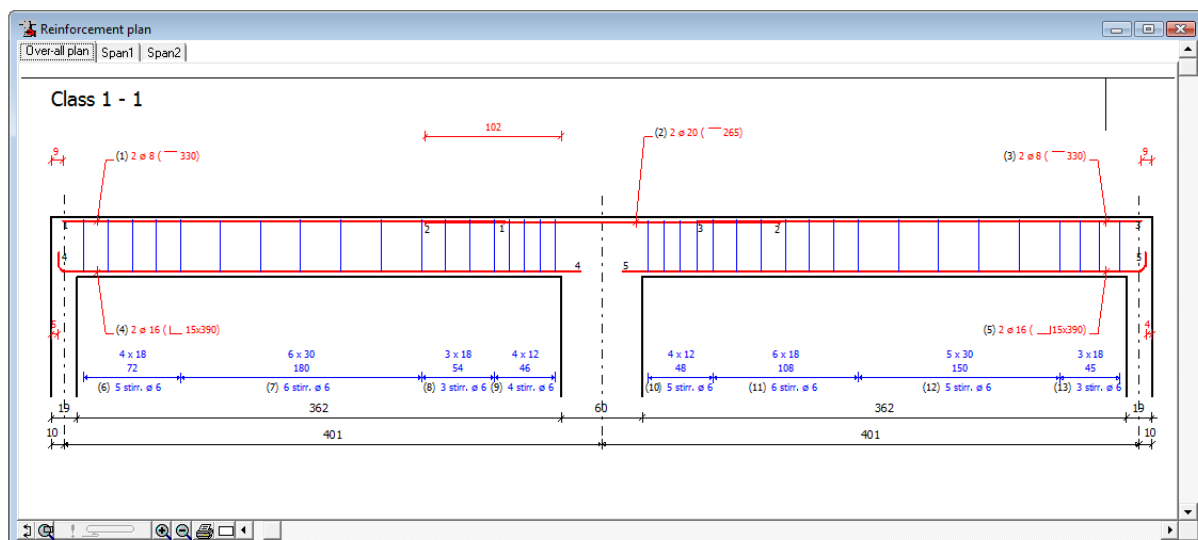


Figure 46: Longitudinal view continuous reinforcement

In case of continuous bottom reinforcement on the supports, we select the second button and use the same working method as for the top reinforcement

7.3. Curved or straight anchorage

ConCrete Plus gives you the possibility to apply a straight or curved anchorage (hook) on the supports. There are three possibilities (Figure 47):

- all bars are anchored with a hook, unless the horizontal anchorage length is as big as the length required for straight anchorage;
- all bars are as far as possible anchored straight ; only when the bar exceeds the measurements of the concrete, a curved anchorage is applied;
- only bars that exceed the axis of the column, are anchored curved, unless the horizontal anchorage length of the hook is as big as the length required for straight anchorage.

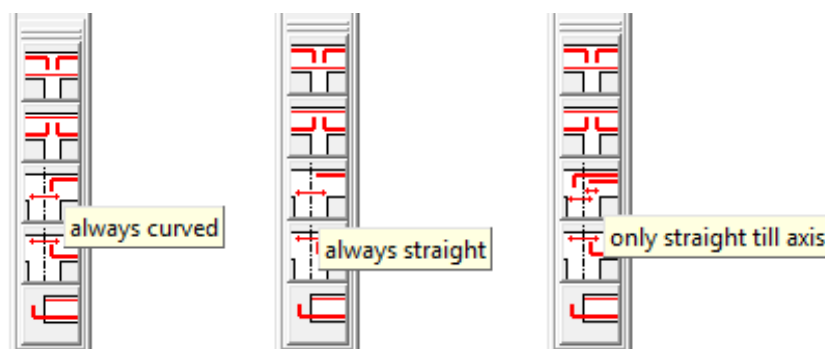


Figure 47: Curved or straight anchorage

We can set the top reinforcement via the third button of the pallet, and set the bottom reinforcement via the fourth button. ConCrete Plus automatically recalculates and redraws the different bars for each modification.

The moment at which this choice is determined is of no importance. Please notice that we always see the set choices represented in the pallet.

7.4. Continuous or discontinuous anchorage

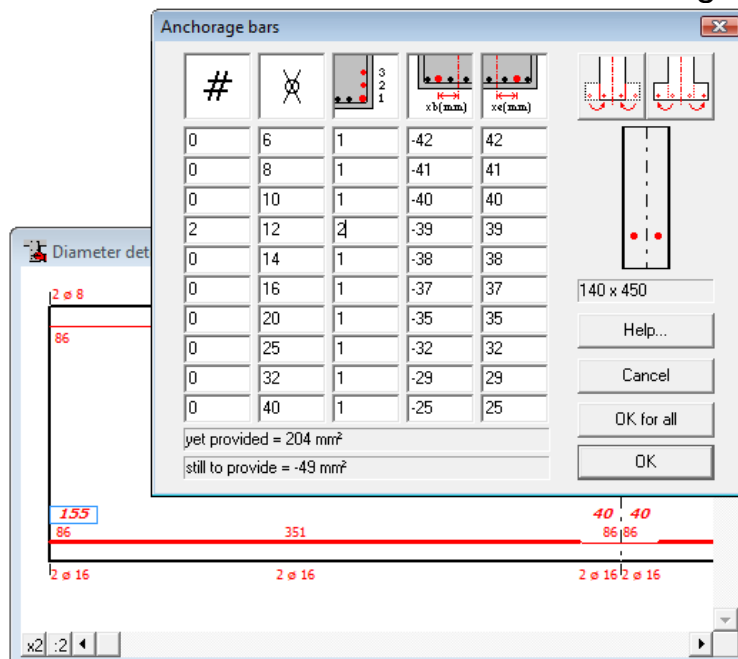
In 7.2. we have pointed out that it is often interesting for prefabrication purposes to keep the bottom reinforcement separate per span. There is however a second problem for prefabrication, viz. the presence of numerous reinforcement bars at the place of the nodes with the columns hinders the casting of the node or even make it practically impossible. A

fitting solution to solve this problem is to keep the anchorage reinforcement as limited as possible by means of discontinuous anchorage.

This means that the foreseen bottom reinforcement of the different spans is nowhere within the dimensions of the column and that we place extra **anchorage bars**, mostly a little more centred in the cross section (nearer to the section axis) and possibly in the second layer, to avoid conflicts with other bars.

These anchorage bars are of course within the dimensions of the columns and take care of the anchorage in the columns on the one hand and of the transfer to the bottom reinforcement in the span on the other. As already mentioned in 2.4.1, the required sections for these anchorage bars, the so-called **anchorage sections**, are indicated in the window "**Diameter determination**" there where the supports are located, just above the bottom reinforcement sections. We use the same working method as described in 2.4.2, to transform these sections into bars.

We transform the theoretical anchorage sections into bars as in



. Use the button "**OK for all**" to validate this choice for all anchorage sections.

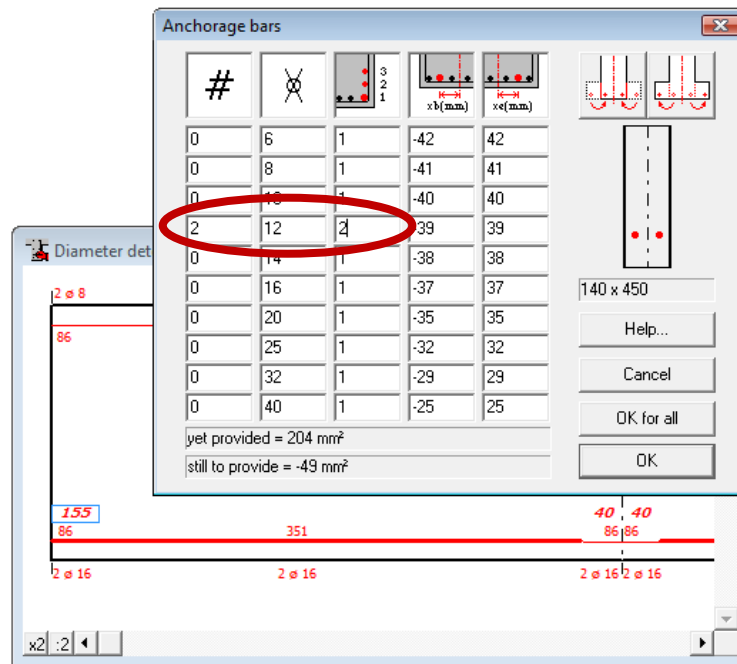


Figure 48: Anchorage bars

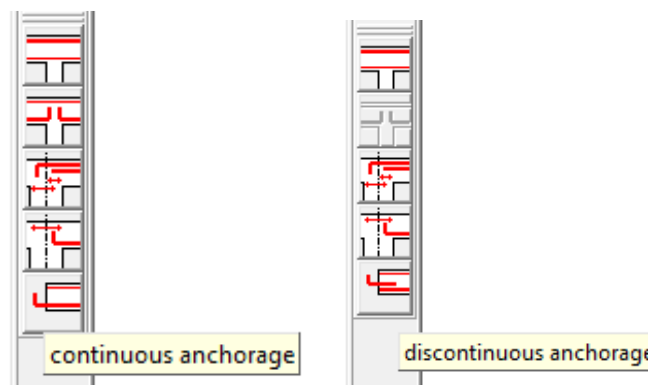


Figure 49: Continuous or discontinuous anchorage

If we select the option "**discontinuous anchorage**" (Figure 49) via the fifth button in the pallet; ConCrete Plus automatically recalculates the bottom reinforcement.

When recalculating, the program tells us that the required width for the first and the third support is 243 mm. We can explain the higher required width as follows; The continuous anchorage was assured by two bars with a diameter of 16 mm, while the discontinuous anchorage now takes place by means of two bars of 12 mm and in the second layer. The foreseen anchorage section is significantly lower. Precisely because of this smaller anchorage section, we require a larger anchorage length.

The anchorage length in our example is too big to let the anchorage bar fall within the width of the support. Because of the reason mentioned in 7.1, the program nevertheless draws the bottom reinforcement, with, in

principle, too small anchorage lengths. Therefore we enlarge the outer half width of the end supports to 20 cm.

After automatical recalculation our plan looks as follows:

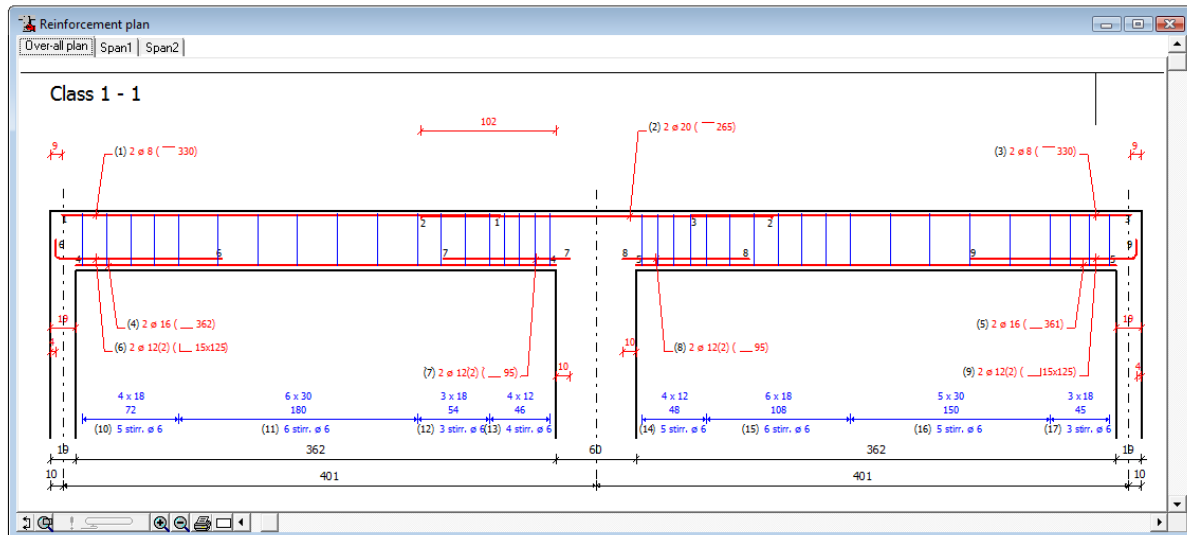


Figure 50: Longitudinal view discontinuous anchorage

7.5. Modifying bar lengths

So far we saw how to transform the theoretical reinforcement section into bars and how to tell the program how we wish to determine the bar lengths. The calculation and drawing of the bar lengths is done automatically by the program.

In 7.1 we saw how to determine the different bar lengths in a more practical way. This result may in some cases still deviate from what we actually want. Think e.g. about the anchorage on the supports, which the program always assumes straight when the horizontal length required for a hook is as big as the anchorage length for a straight bar. In such a case however, many engineering offices will still add a hook to the anchorage, although it is not strictly required.

If we wish to change the measurements of a bar, we click with the mouse in the window "**Reinforcement plan**" there where the information of that bar is situated. As an example we will foresee the bars (7) and (8) of a vertical hook with a length of 15 cm.

After clicking with the mouse on the concerned information, the following dialog box appears on the screen:

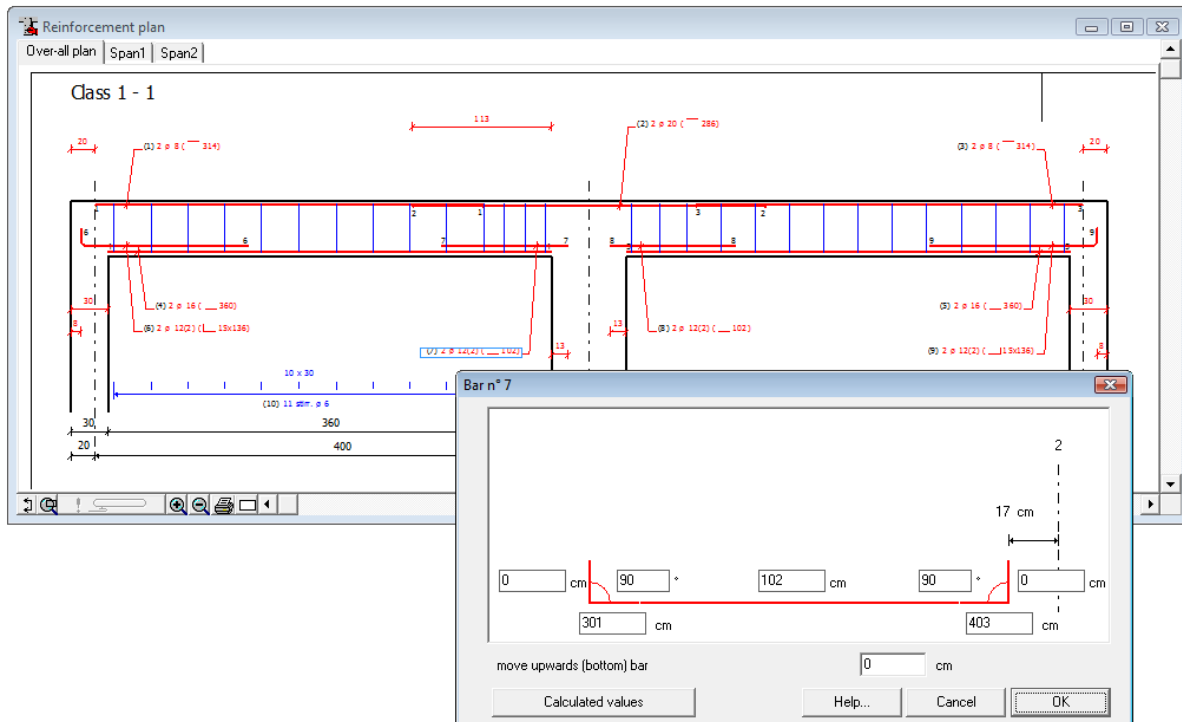


Figure 51: Modifying bar lengths

In this window we can change the set measurements as we please. It is obvious that the program never allows to choose measurements that are smaller than theoretically required ones.

The two outer edit boxes on the left and the right serve to enter the vertical length of the left-, respectively right hook. We can enter the total horizontal length of the bar in the central edit box. If it differs from the theoretically required length, the bar is, as much as possible, extended symmetrically.

In the two bottom edit boxes we can indicate the distance between the left- respectively right ending point of the bar versus the left end of the beam.

Finally we can indicate for both hooks which is the angle with the longitudinal direction of the bar.

Centrally at the bottom there is a button "**Calculated values**" with which we can withdraw at any time the theoretically required bar length.

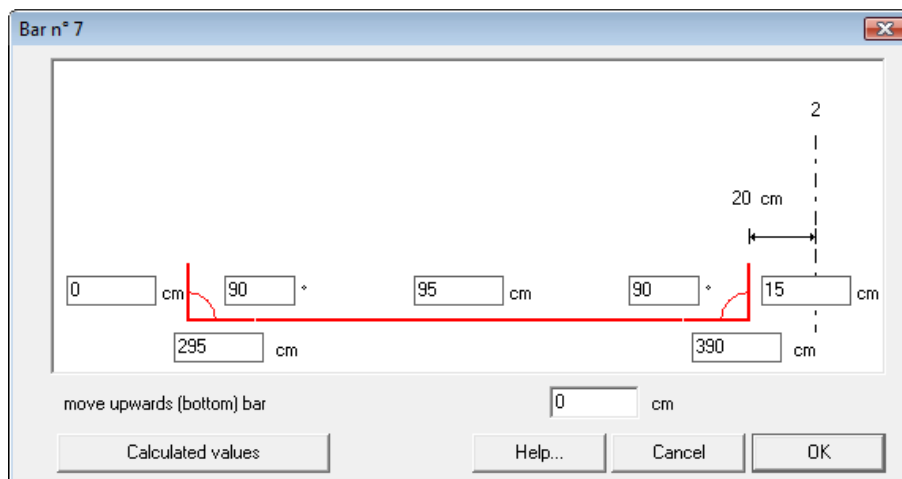


Figure 52: Adding hook lengths to bars

For bar (7) we enter the desired vertical hook of 15 cm (Figure 52) and confirm our choice by pressing the "OK"-button. After applying the same working method for bar (8), our reinforcement plan looks like this:

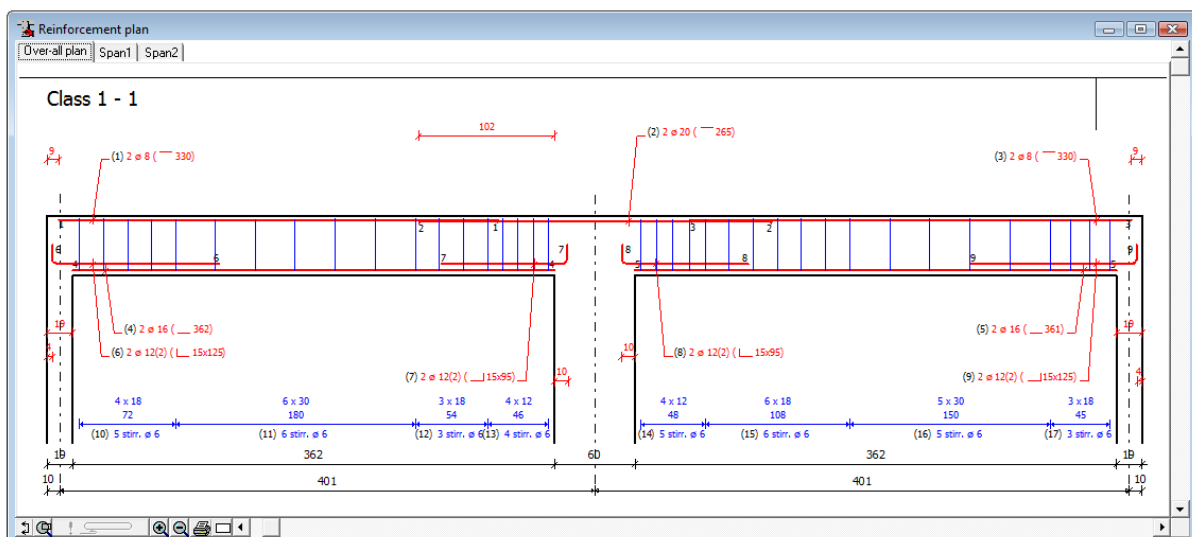


Figure 53: Reinforcement plan with changed bar lengths

7.6. Entering web reinforcement

Higher beams are usually equipped with web reinforcement. To determine this web reinforcement, it's sufficient to define the maximum vertical distance between two successive layers. So, select "**Web reinforcement**" in the menu "**Preferences**". The screen displays the following dialog:

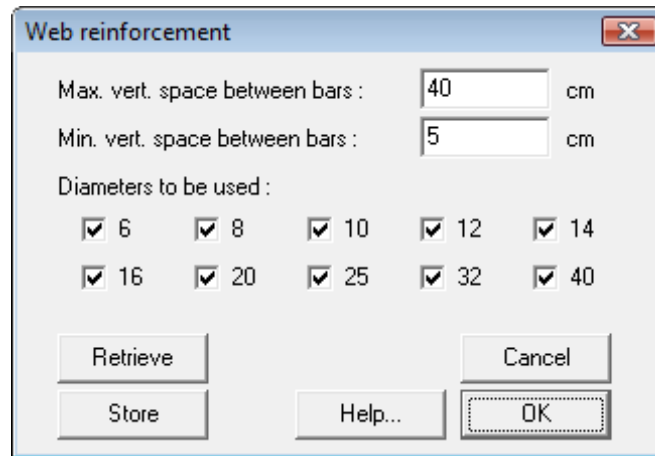


Figure 54: Web Reinforcement

Set the "**Max. vert. space between bars**" for example on 20cm. This is the height of the bar divided by 2. Click "OK". As shown in the figure below ConCrete Plus shows that web reinforcement should be used.

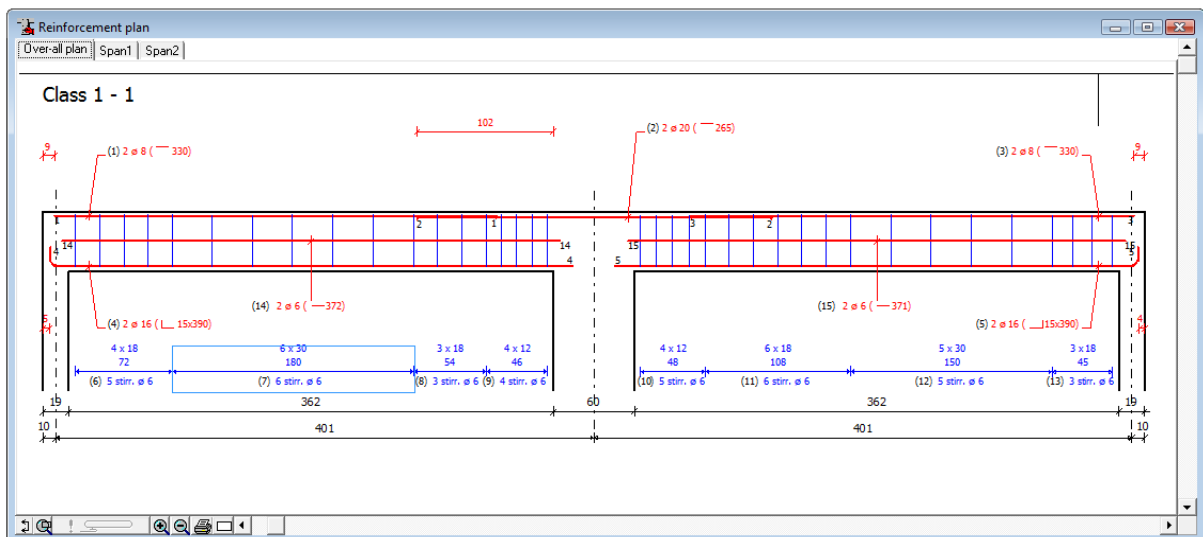


Figure 55: The web reinforcement suggested by ConCrete Plus

Like the bars of the longitudinal reinforcement, this bars can be changed at any time by clicking on the appropriate text in the "**Reinforcement Plan**". For bar 14 this gives:

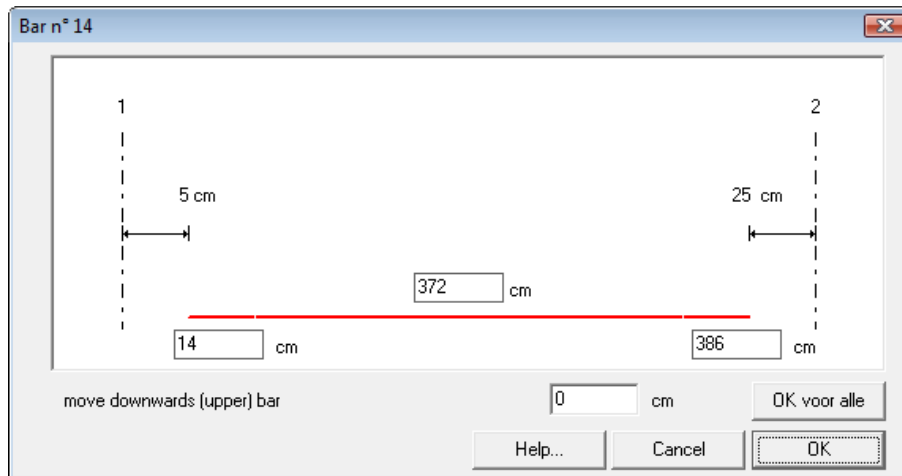


Figure 56: Editing the web reinforcement

By clicking the button **“OK for all”** the distance from start and end points of the web reinforcement to the column axis will be all taken the same. The vertical position is adjusted along.

7.7. Maximum bar length

Selection in the menu **“Preferences”** the option **“Maximum bar lengths”** to set the maximum bars lengths. For each diameter a different maximum lengths can be defined.

Bars for with the theoretical length exceeds the maximum bar length, will be split automatically. The lap length and anchorage length are also taken into account.

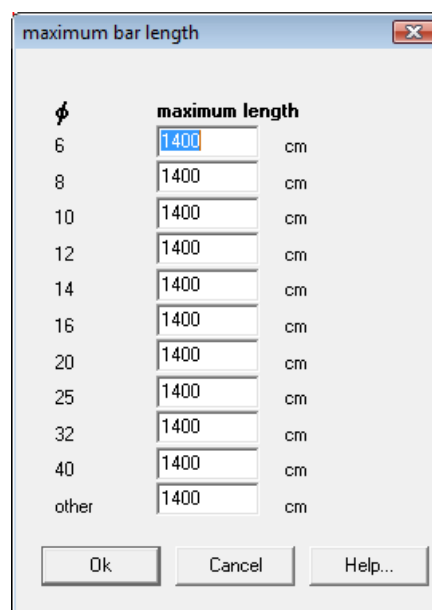


Figure 57: Maximum bar length

7.8. Modifying the stirrups

Select in the menu “**Preferences**” the option “**Stirrups**” to change the properties of the stirrups.

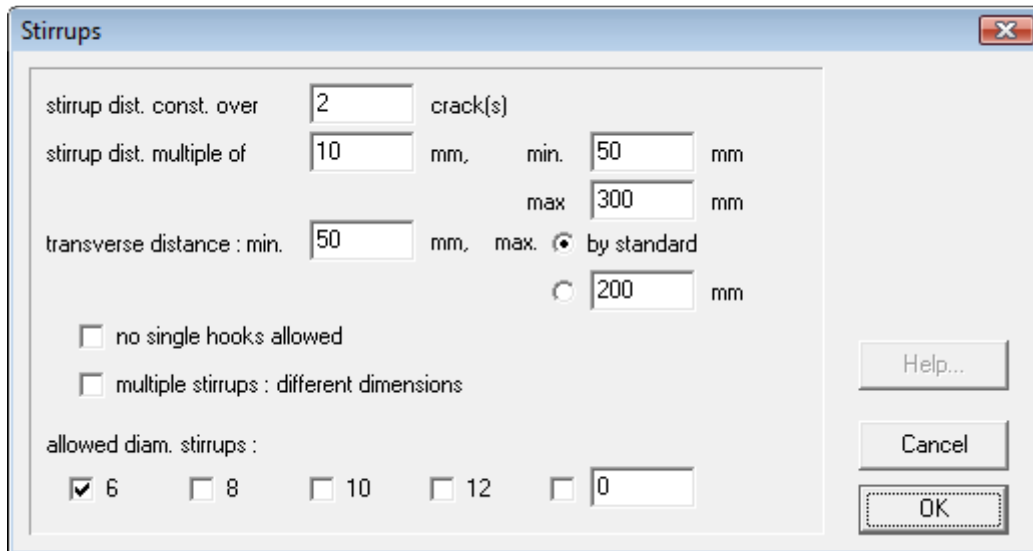


Figure 58: Properties of the stirrups

The option “**multiple stirrups : different dimensions**” allows you to use non-identical stirrups in the section.

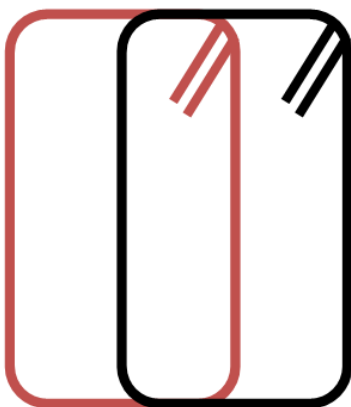


Figure 59: Multiple stirrups with identical dimensions

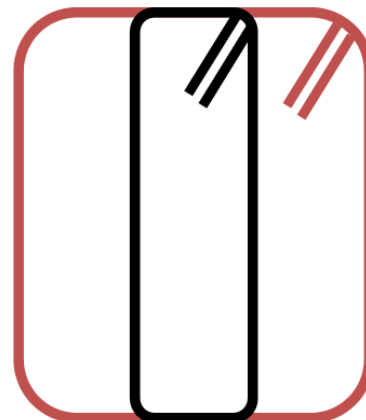


Figure 60: Multiple stirrups with different dimensions

Click with the mouse on the text accompanying the stirrups in the “**Reinforcement plan**” window to modify the shape or to add a shape. On the screen appears the dialog box of Figure 62.

In this window, first of all we see the number of shapes per section for the stirrups. All these shapes are represented in the section sketch.

Select a stirrup form to modify it. The selection is done by choosing the corresponding number in the pull down menu; the selected stirrup form is always represented with a thick line in the section sketch. With each selected shape corresponds a shape type, an insertion point (x_0, y_0) , a rotation angle around the insertion point, and the folding lengths a, b , etc.

On the sketch of the shape type the different folding lengths are indicated and the insertion point is marked with a red dot. To modify folding lengths and insertion point, you can edit the new values in the edit boxes.

The rotation angle can be modified by a pull down menu.

To modify the shape type of the stirrup, click on the button with the shape. On the screen appears the dialog box of Figure 63.

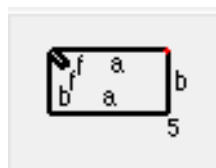


Figure 61: Shape type button

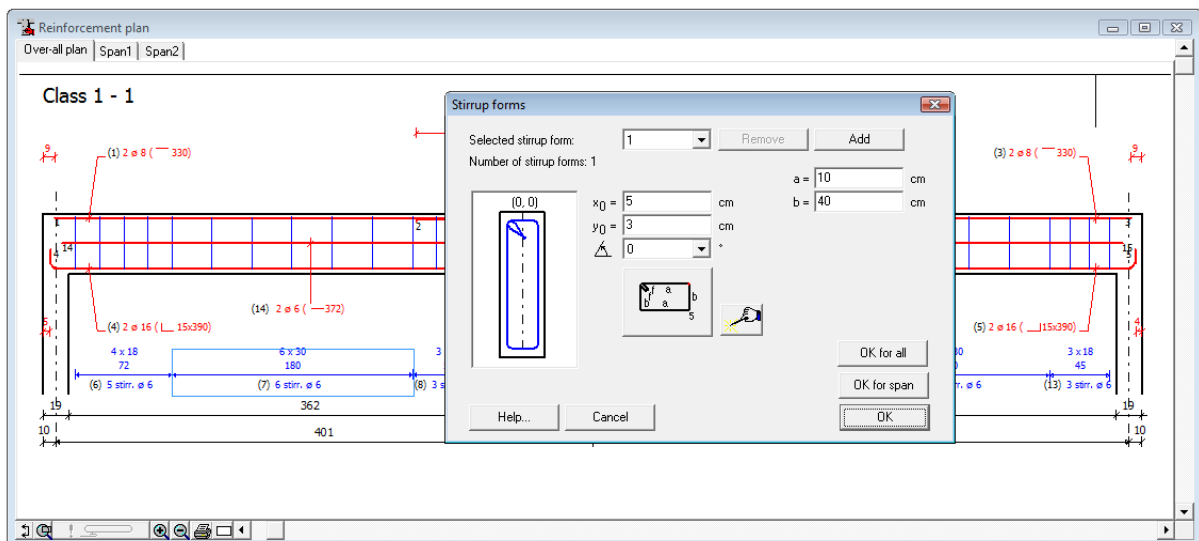


Figure 62: Stirrups forms

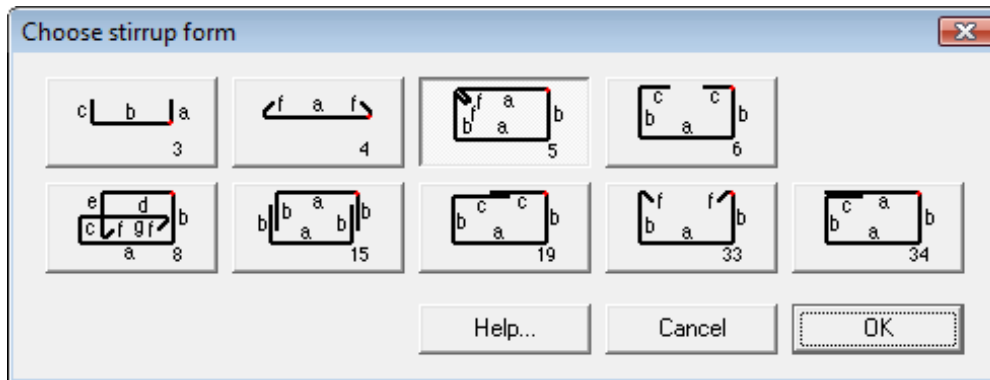
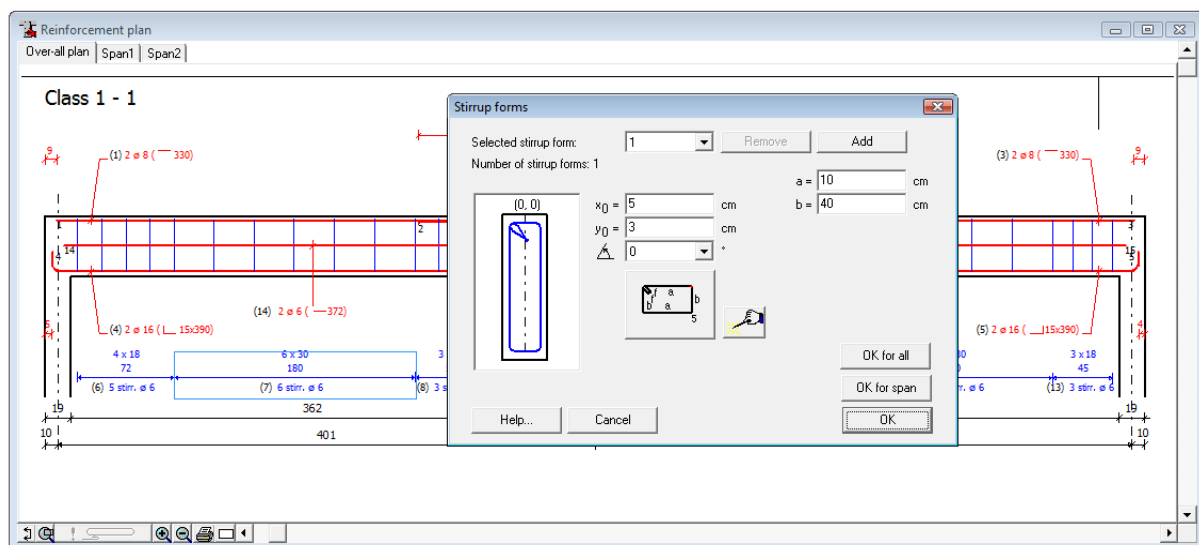


Figure 63: Choose stirrup form


Click in this window on the desired shape and confirm with the **"OK"** button.

By means of the buttons **"OK for all"** and **"OK for span"** the same stirrup form will be applied to the whole beam, resp. the whole span.

Click in the dialog box of Figure 62 on the button **"Add"** to add an extra stirrup in the section. Again the dialog box of Figure 63 appears. After selecting the desired shape for the new stirrup, the number of stirrup forms in



is increased by 1. The last added form is automatically selected, in the way that we immediately can enter the insertion point, rotation angle and folding lengths. The added stirrup has the same diameter and longitudinal distance as the already present form(s). The form is only added in the selected stirrup zone.

Each time you click on the wizard-button , ConCrete Plus proposes you an alternative logical shape for the stirrup.

Added stirrup shapes can be removed by selecting the shape and click on the button "**Remove**". Of course, the shapes required by the calculation can't be removed.

Chapter 8 An entire project of beams

8.1. Introduction

Projects made with ConCrete, almost consists of different classes with different beams. In chapter 6 in the user's manual of ConCrete is explained how to create these classes and which operations can be done. We will repeat briefly most of the operations here. For more information we refer to the user's manual of ConCrete.

8.2. Defining classes

Although the classes of our project were already defined in ConCrete, we still can change these in ConCrete Plus. Select the latest command "**List of classes...**" in the "**Edit**" menu. On the screen appears the following dialog box:

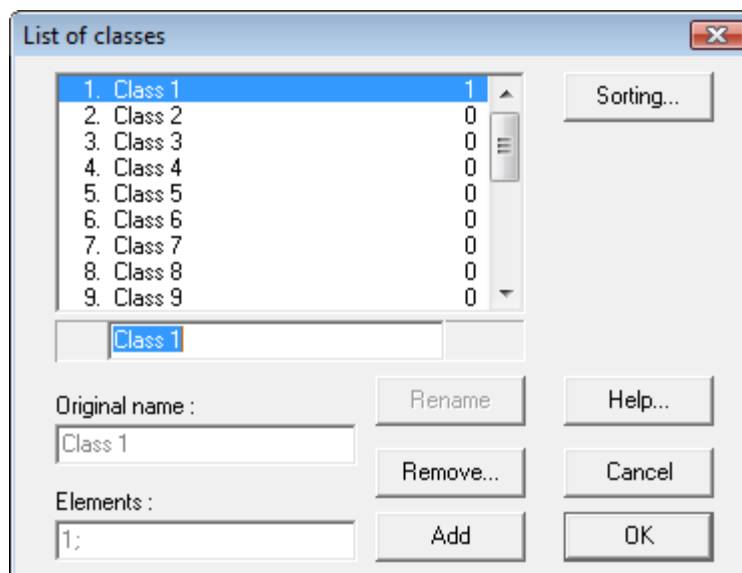


Figure 64: List of classes

There's a list with all the names of the classes. Like explained in the user's manual of ConCrete, we can rename, add and remove classes.

The button "**Rename**" is only enabled when there is a class selected in the list and when the name of that class is modified in the edit box below the list. Pressing this button will change the name in the list.

The button "**Add**" allows you do add new classes. The selected class and all sequent classes will move one position down and a new class will be inserted with the name in the edit box below the list.

The button "**Remove**" is only enabled when there is a class selected in the list. With this button, not only the name of the class is removed out of the list, but also all elements that belonged to this class.

Note that the position of the class in the list can be easily changed. First select the class you want to move. Keep the mouse button pressed and move the class in the list to the desired position. Release the Mouse button and the class is move to its new position.

We notice that, in contradiction to ConCrete, it is not possible to set the names of the different classes as standard values in ConCrete Plus. Normally defining the different classes already takes place in ConCrete and the possibility to define classes in ConCrete Plus only serves for making possible corrections.

8.3. Getting an element out of a certain class

Are the elements belonging to the class not visible, double click then first on the class name or click on the '+' sign at the left.

To show and possibly modify the beam, we have two possible methods. First select the beam in the list and then use the command "**Element**" - "**Edit**", or just double click the beam in the list.

The selected beam is shown in the "**Reinforcement plan**" window.


8.4. Moving an element to another class

To move an element to another class, just select the element in the list and drag it to another class. In other words : select it with the mouse, keep the mouse button pressed, move the mousse to another class and release the mouse button.

8.5. Duplicating an element

Suppose that we have to draw two elements from which the calculation in ConCrete is the same. In practice, it can be the beams of a multi-storey building on different levels with the same loads; but the beam on the lower floor is posed on larger supports than the one on the higher floor.


We can first generate the reinforcement plan for the beam on the higher level and then make a copy of this beam to modify this copy with the specific support dimensions of the lower beam.

Select the drawn beam in the **Project list** window. Select the "**Duplicate**" command in the "**Element**" menu or click on the icon . The element is duplicated and shown in the "**Reinforcement plan**" window.

The copy is identical to the original. We can modify this copy without changing the original beam. In this way, we can draw beams with an identical calculation in different ways. Of course, the moment at which you make the copy is complete free to choose.

It's clear that it's recommended to rename the copy afterwards.

8.6. Deleting an element

To delete an element, we first select it in the **Project list**-window. We then select the fifth command "**Remove**" in the **Element** menu or click on the button . The element is now cleared out of the class.

8.7. Copying elements between projects

To copy an element from one project to another, first get the element as described in 8.3 and select then the "**Copy**" command in the "**Edit**" menu. Then, open the project to which you want to copy it. Select there the desired class and click then on the "**Paste**" command in the "**Edit**" menu.

Chapter 9 Bar bending schedule

9.1. Automatic generation of bar bending schedule

ConCrete Plus generates per span a list of all used reinforcement bars, complete with cutting and folding lengths.

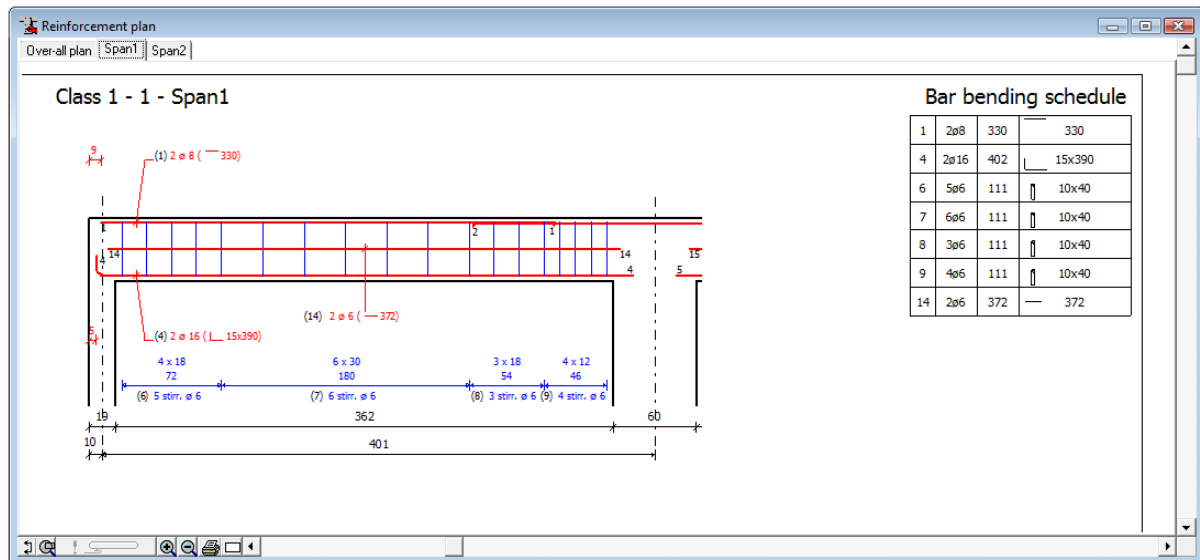


Figure 65: Span 1 with bar bending schedule

To change the position of the bar bending schedule, select in the submenu **“position of bar bending schedule”** in the **“Lay-out”** menu the choice **“top”** or **“bottom”** (see 5.7).

9.2. Numbering of the bars

In our example, the bars and the stirrups are numbered with figures starting from 1. It may however occur that we wish the numbering of the list of the bars to be visualised in lower or upper case. In ConCrete Plus we can set this by selecting the submenu **“Numbering bars...”** in the menu **“Lay-out”**. The following dialog box appears on the screen:

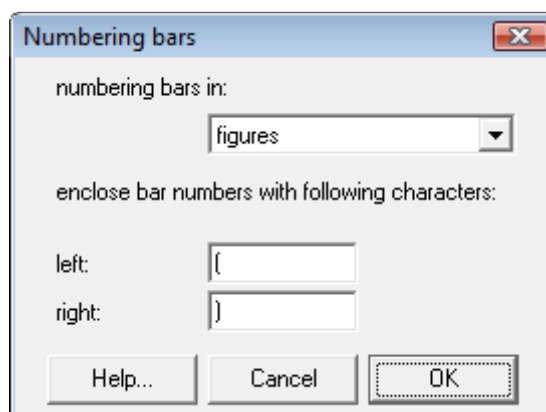
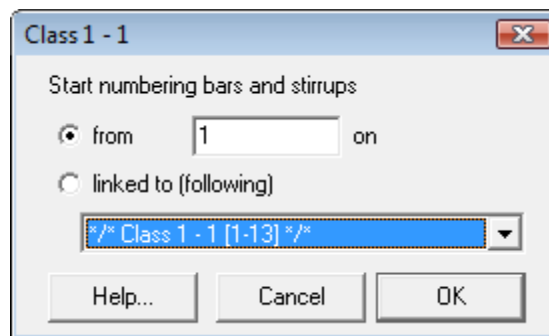


Figure 66: Numbering bars

Select in the pull down menu whether you want to number your bars with figures or with characters in lower or upper case. All numbers are automatically adapted. When using characters, the program will proceed with "a1" (or "A1") after reaching "z" (or "Z"). In this way, the numbers are also Unlimited when using characters.

In practice, very often a **continuous numbering** of the rebars over the different beams of the project is used. It can be interesting then, not to start the numbering from 1, but from another figure.

Suppose that we numbering of the bars of a certain beam B should follow the numbering of another beam A. First get the beam B out of the project. Then, select the command "**Numbering bars...**" in the "**Element**" menu. This command is only enabled when an element is show on the screen. On the screen the following dialog bow appears:

**Figure 67: Bar numbering**

By means of 2 radio buttons, you can indicate whether you want to start the numbering from a fixed number or adjacent to the numbering of another element.

In the last, you have to select the element by means of a pull down menu; it doesn't matter whether the elements belong to the same class or not.

If you indicate that the bars of your second beam should be numbered adjacent to the numbers of your first beam, the reinforcement plan will look like below :

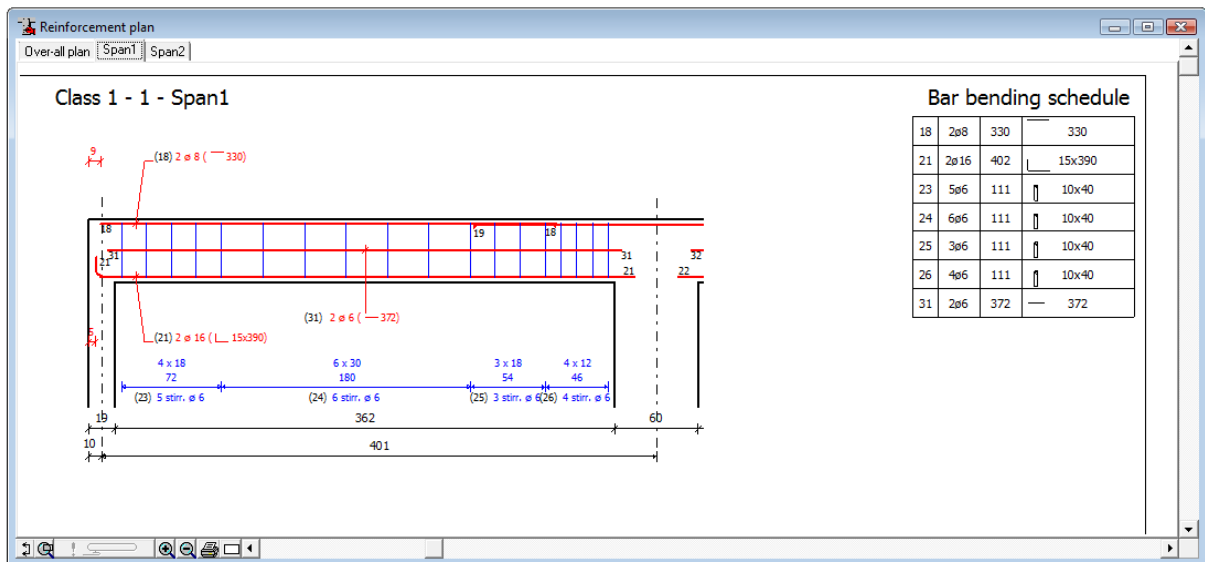


Figure 68: Reinforcement plan for continuous numbering

The numbering of the bars starts now from (18); indeed, the highest number in the previous beam (related to the latest stirrup zone) was (17).

It is important to know that, after each modification of the numbering of the bars of an element from a linked list, the program automatically adapts the numbering of the bars of all elements linked in a direct or indirect way. Consequently we do not need to find the elements again to adapt the numbering.

When an element belonging to a linked list is deleted, then the program will link to numbering of the element that followed the deleted element to the element that preceded the deleted element. Of course, all numbers of all following elements are adapted.

For each element, the program always first numbers the top reinforcement, then the bottom reinforcement and afterward the stirrups and possible the horizontal bars for the shear reinforcement.

9.3. Exporting a bar bending schedule file

In the introduction we already mentioned the existence of the program ConCrete List. With this program we can generate the bar bending schedule of all reinforcement used in one or even more projects. As an extra, the program also generates a summary list of all used reinforcement with the total length and total weight per diameter and in global.

In ConCrete Plus a file can be made with all necessary data for generating such bar bending schedule. You generate such a file for a certain element, a certain class of elements or the whole project. Select the desired option in the submenu of the **"File" – "Export bar schedule"** menu.

The standard Save dialog box appears on the screen. The program suggests the name of the project as file name, if possible completed with the name of the class and if possible also completed with the name of the element.

The file is a tabbed text-file : it can not only be read by ConCrete List but also by any other program that can read this type of file. If you are using your own bar bending schedule program created within a spreadsheet or database program, ConCrete Plus can also transfer the data to that program. If the transferred data are not corresponding completely with the data your bar bending schedule program needs, an adaptation of the exported data in ConCrete Plus is possible, in dialog with BuildSoft. In that case, the user will find his own program in the list of formats that ConCrete Plus supports.

You can select your format by a pull down menu at the bottom of the Save-dialog box. By default, the program propose the format that corresponds with ConCrete List : "type1 (CCL)".

In the file, the length of the hooks are also saved. How these hook lengths should be calculated, can be defined with the command "**Preferences**" – "**Hook lengths**". After selecting this command, the next dialog box appears on the screen:

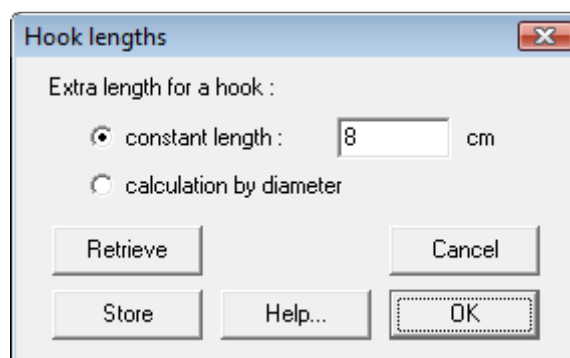



Figure 69: Hook lengths

In this window we can choose whether we wish the extra length required for a hook to be a constant value entered by ourselves or whether we want it to be calculated by the program in function of the diameter.

For the meaning of the buttons "**OK**", "**S**", "**R**" and "**Cancel**" we refer to 4.2.

Chapter 10 Printing

10.1. Page setup settings

In the “Reinforcement plan” window, a frame is drawn around the drawings, possibly with some subdivisions (smaller lines perpendicular to the frame at a regular distance). The dimensions of this frame or its subdivisions corresponds with the page format. In this way, it is possible to verify whether the drawing will fit to the page(s) or not. To change the page size and thus the size of the frame (and its subdivisions), select the command “**Page setup**” in the “**File**” menu or click on the icon .

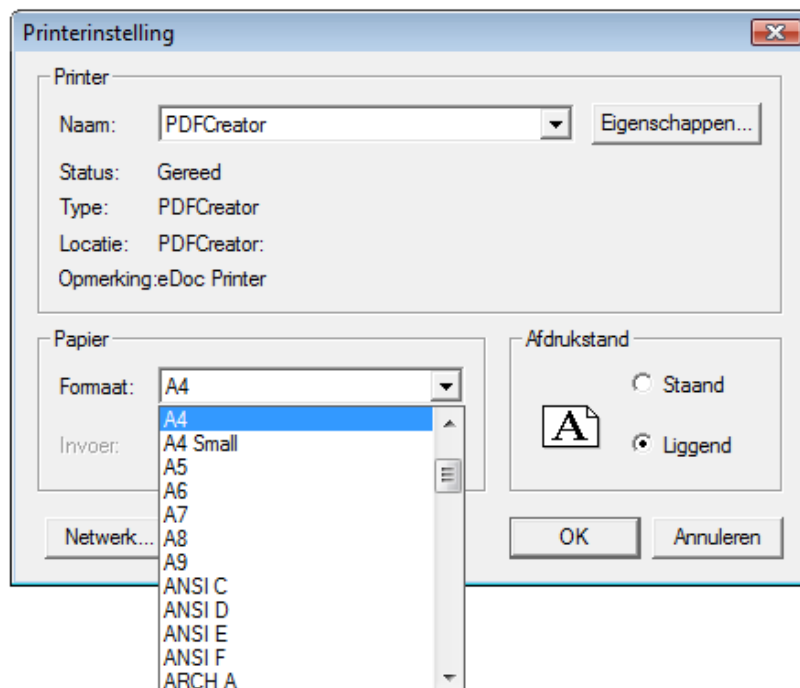


Figure 70: Page setup

Choose e.g. for a A4 format and set the orientation to ‘Landscape’. The reinforcement plan of the first span a scale of 1/20 will just fit on one A4 – page.

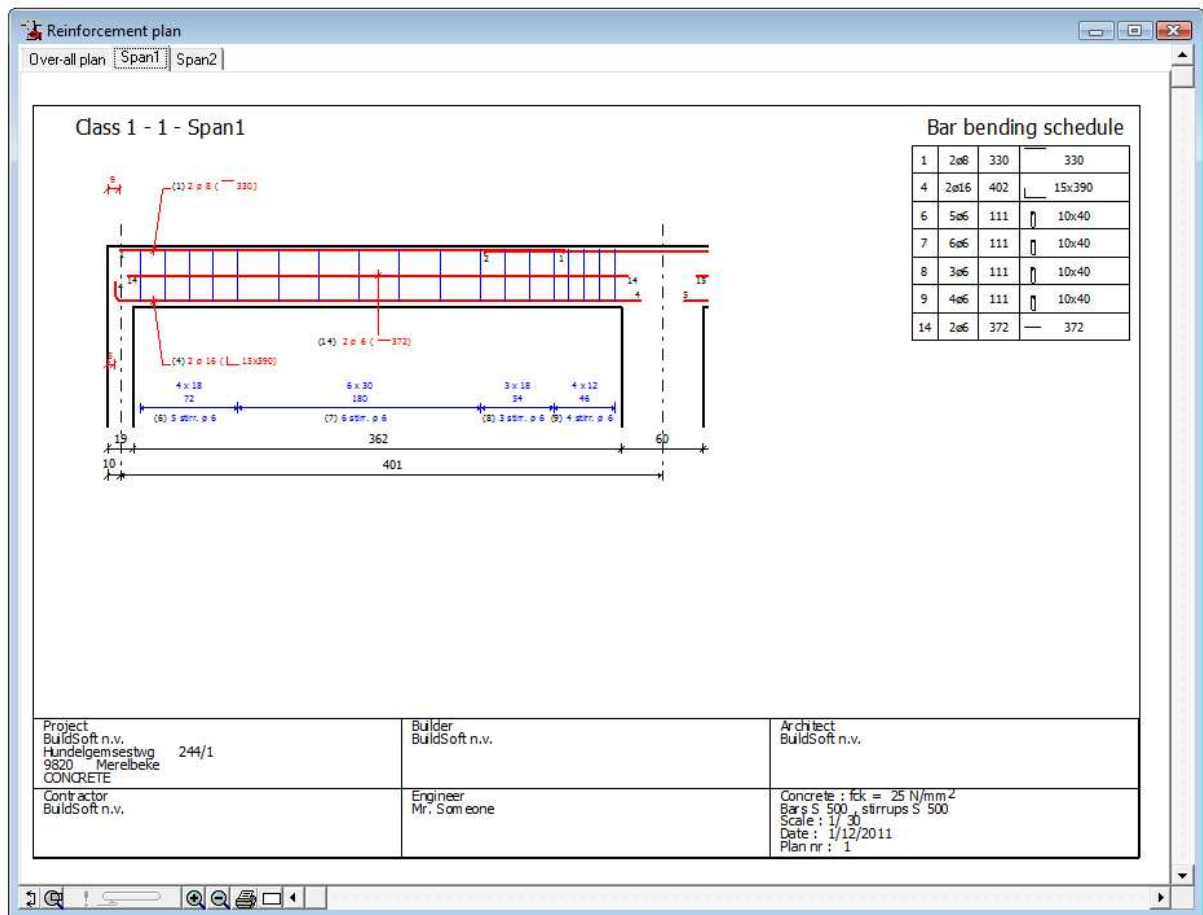


Figure 71: Layout span 1

10.2. Setting the print options

Select the command "**Print options...**" in the **"File"** menu. On the screen appears the following dialog box :

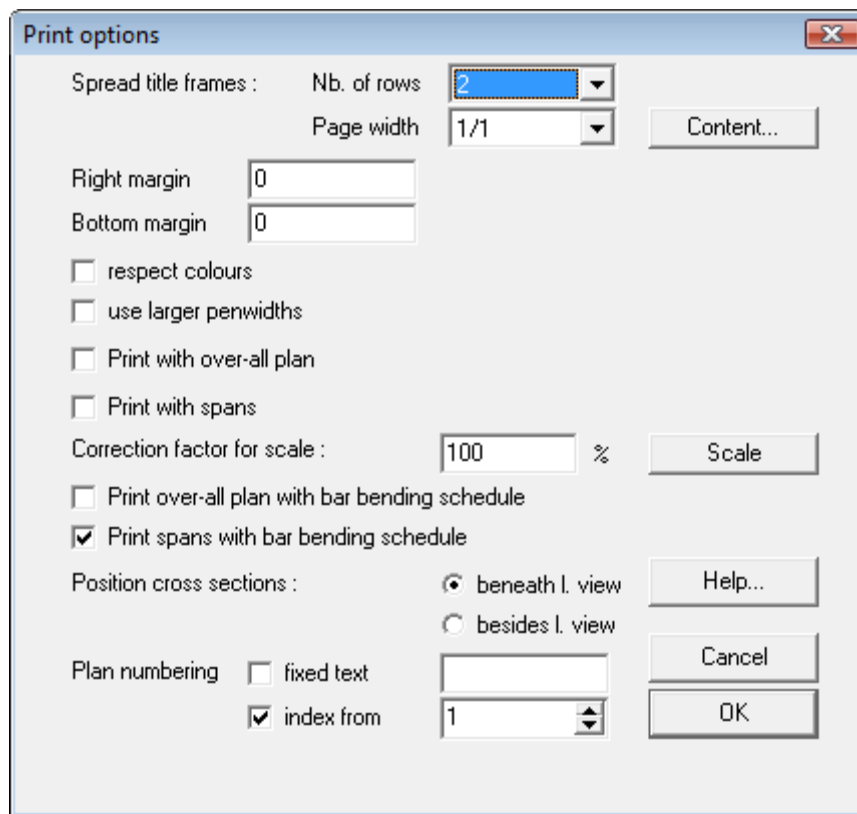


Figure 72: Print options

As already mentioned before, the reinforcement plan is automatically framed. In addition it's also possible to add a title frame at the bottom of the plan (left or right, see 5.6). This title frame can contain at the maximum 6 dataframes : the address data of the project, the owner, the architect, the contractor, the engineer and the general data (the used materials, date, scale(s) and plan numbers).

First of all you can select the number of horizontal rows over which these frames should be put (1,2,3 or 6) and also what fraction of the page width will be taken by the title frame. Than you can indicate which information should be shown in which frame by clicking on the button "**Content...**". Select the desired information in each frame by means of a pull down menu:

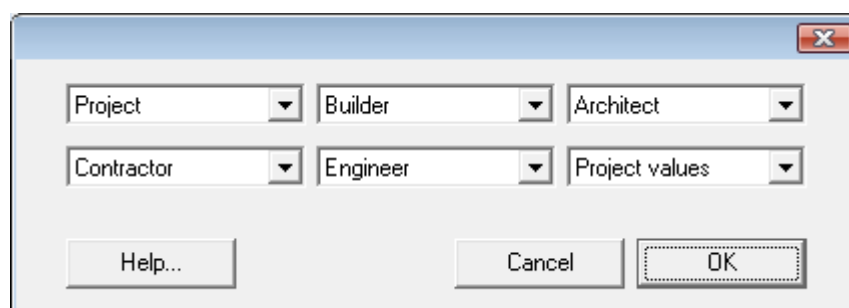


Figure 73: Title frames

The look of the dialog box is adapted to the number of horizontal rows. Frames which content was set to "blank" are not drawn (neither is their frame) . In this way you can define the number of frames, their size and their position.

Right margin and bottom margin can be set in order to reduce the rest space in the frame. The drawings of the cross sections can be set at the right side of the longitudinal view or beneath it. Reinforcement that do not fit on one page will automatically be split over a number of pages, with a small overlap and with an indication of this overlap by small horizontal and/or vertical lines.

Plans can be numbered with a fixed text and an index number which is automatically increased during printing. In this way the printed plans are numbered in a continuous way.

If the scale (see 11.1.3) on the print out does not fully correspond with the defined scale, a correction factor can be set.

Because not all printer drivers are able to translate colours into gray scale, we can set the option not to respect to colours of ConCrete Plus in order to transfer all elements in black to the printer.

10.3. Printing an entire project

To print an entire project we select the command "**Print project...**" in the **File** menu. The program then prints the entire project, class after class and element after element. For each element the program verifies whether all reinforcement sections are translated into sufficient bars; only when this is the case, the element is printed. The plans are printed on the scale defined further in 11.1.3. For the font size, we refer to 5.2.

10.4. Printing an entire class

If we wish to print all the elements of only one specific class, we select this class in the **Project list**-window. Afterwards we select the command "**Print class...**" in the **File** menu. This command works in a similar way to that described in 10.3.

10.5. Printing only one element

To print only one element, we have to get it in the **Project list**-window and select the command "**Print element...**" in the **File** menu. This command works analogous to 10.3.

Chapter 11 Export to CAD programs

11.1. Plot settings

11.1.1. File format

A reinforcement plan can be automatically made with Concrete Plus in an easy way.

In some cases we want to group different beams on a plan and work further on this plan with additional details and a title page. For these operations is a powerful CAD program required. For that reason, ConCrete Plus has the possibility to export the reinforcement plans to such CAD programs. Most of these packages support the DXF format like AutoCad, but also VersaCad and MicroStation.

Except DXF, ConCrete Plus provides the ability to export the drawing to Strakon, or through a 3D-text file to Autostruct and Speedikon.

The choice of the desired format is set by selecting the command **"File format"** under the submenu **"Plot Settings"** in the menu **"Layout"**. The screen displays the following dialog box:

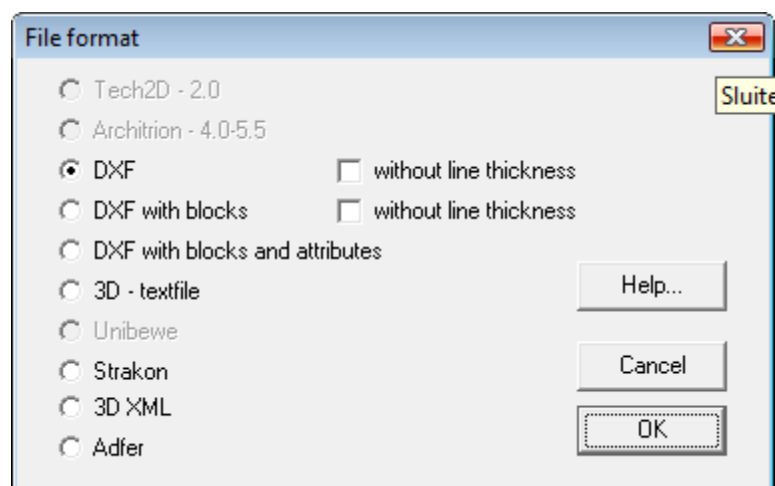


Figure 74: File format

A distinction is made between a pure DXF, a DXF format with blocks (for the comments on the plan) and a DXF format with blocks and attributes describing the characteristics of the reinforcing elements.

ConCrete Plus will remember your choice when you quit the program. When the program is restarted and a plot file has to be made, it is not necessary to open this dialog box again, unless a different format should be used.

11.1.2. Plot font

Remark: all fonts transferred to a CAD program are in the same type.

Select in the menu “**Lay-out**” the option “**Plot settings**” and the command “**Font...**” to change this font. The following dialog box will appear:

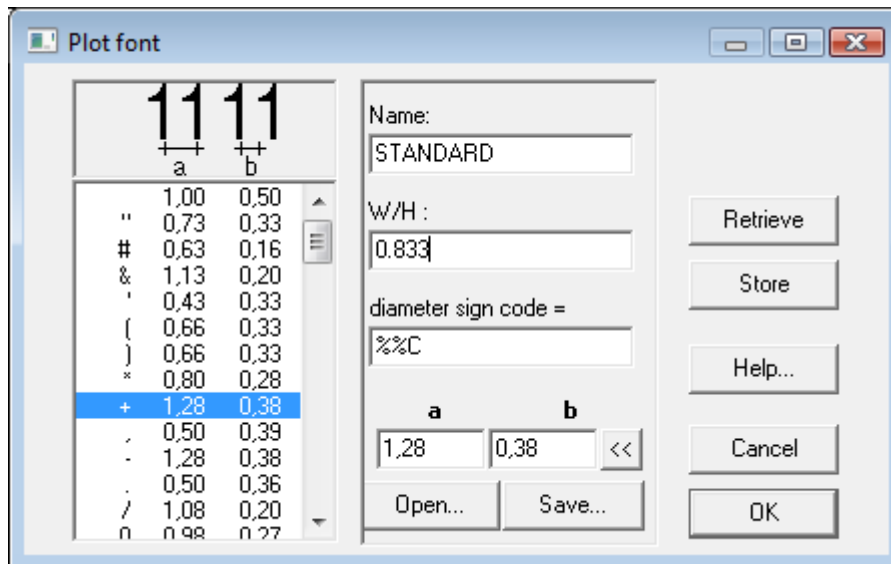


Figure 75: Font

First, you can specify the name of the font. This name only plays a role in case a DXF file is created. The name should then match with the name of a known font in CAD program.

For all formats the ratio B / H can be set as the nominal width of the font compared to the set height. In the concerned CAD programs, the nominal width is usually equal to the height. However, if narrower or wider letters are desired, this can be set by the aforementioned ratio.

In the dialog box, there is also a list in which the relative width and distance can be set for each font. The relative width is the ratio of the total width occupied by a letter (plus any gap) to the font size. The relative distance is the ratio of the blank space between two identical letters to the selected font size.

Both values can be edited for each character. Select the line with the character in the list; the actual values for this character are displayed in the edit boxes “a” and “b”. Start by editing a new value for the “a” parameter; once you’ve typed a value with two figures after the comma, the edit box for entering the b value is selected automatically. When this values is entered, press the ENTER button or the << icon to put these values into the list.

Be careful : these parameters don't influence the font in the CAD program, but thanks to this parameters, ConCrete Plus can calculate the place that a text will occupy in the CAD program.

These values should correspond with the way the fonts behave in the CAD program. The width W/H can be chosen arbitrary, since this ratio is also transferred to the CAD program. The font there will be drawn with this ratio.

The diameter symbols "Ø" and "ø" from ConCrete Plus can not always be transferred as such to CAD program. E.g. for the transfer to AutoCad the code should be set to "%C" to see the "Ø"-sign on the plan. For other CAD programs it is possible that another code is required. You can freely set the code in ConCrete Plus.

With help of the button "**Save...**" we can save the settings in a special font file. Earlier saved fonts can be found by means of the button "**Open...**". There are already a number of fonts installed in the program directory.

11.1.3. Plot scale

When creating the plot file, ConCrete Plus exports the geometry to the CAD program in its real size, measured in the selected plot units (see 11.2), regardless of the plot scale. The plot scale is used to define the 'real' size of the font.

For instance, if the font size is set to 3 mm and the plot scale is 1 / 50, then ConCrete Plus exports a font with real size 3 mm x 50 = 150 mm. When in the CAD program the plan is plotted on 1 / 50, the final font size will be indeed 3 mm. If that same plan is plotted at 1/100, then the final font will be 1.5 mm.

Select in the "**Layout**" menu the "**Plot settings**" submenu and then the "**Plot scale...**" command to set the plot scale. The following dialog box will appear:

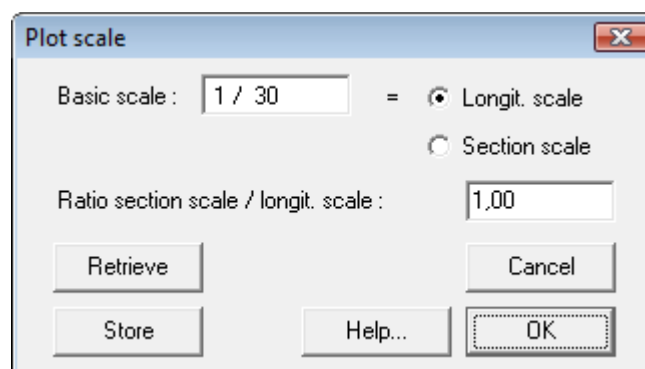


Figure 76: Plot scale

Here you can define the longitudinal scale and the section scale. They can be different from each other.

11.2. Plot units

As already mentioned in 11.1, ConCrete Plus exports the reinforcement plan in real size. But we have to specify in which units this should happen. These plot units are independent of the units and precision discussed in Chapter 6.


Select the command "**Plot Units**" under the menu "**Preferences**" to select the desired plot units : mm or cm. In most cases it is advisable to set the plot units in mm. For beams longer than 32m it is necessary to set the plot units to cm.

11.3. Creating a plot file

The last step is saving the reinforcement drawing in a file of the desired format. As for the bar bending schedule, you can choose to make a plot file of the current element, of the selected class or of the entire project (for some file formats not all options are possible). Select the desired command under the submenu "**Create plot file**" in the menu "**File**".

Chapter 12 Saving, opening, closing

12.1. Opening an existing project

Select the command "Open..." in the menu "File" or click on  to open an existing project in ConCrete Plus. Apart from the documents already saved in Concrete Plus, all documents created with ConCrete can be opened as well. As already mentioned in 2.2, you cannot create any new projects with ConCrete Plus.

12.2. Saving an existing project

To save an existing project in ConCrete Plus there are two possibilities:

The first possibility is to save the document under the same name by clicking the command "**Save**" in the "**File**"-menu. This command can only be selected if there were changes to the previously saved project. With the "**Save**" command, the files are always stored in binary format (type ConCrete).

The second possibility is to save the project under a different name by selecting the command "**Save As...**" in the "**File**"-menu. This command is, in contrast to the previous, always selectable. The document can then be stored in binary format (type ConCrete) or text format (type ConCrete Txt). The latter format allows you to open files stored in the Macintosh version in the Windows version and vice versa.

12.3. Saving automatically

In order to protect ourselves against the loss of data by a breakdown or any other cause, we can activate the option "**Save automatically**" in the **Preferences – Save automatically** menu. This option is marked by a "" – sign if its active; in the other case, the option is not marked. When the option is activated, the program will automatically save after certain actions.

To define after which actions the automatically save procedure should be performed, click on the "**Preferences saving...**" command in the **File** menu. The following dialog box appears:

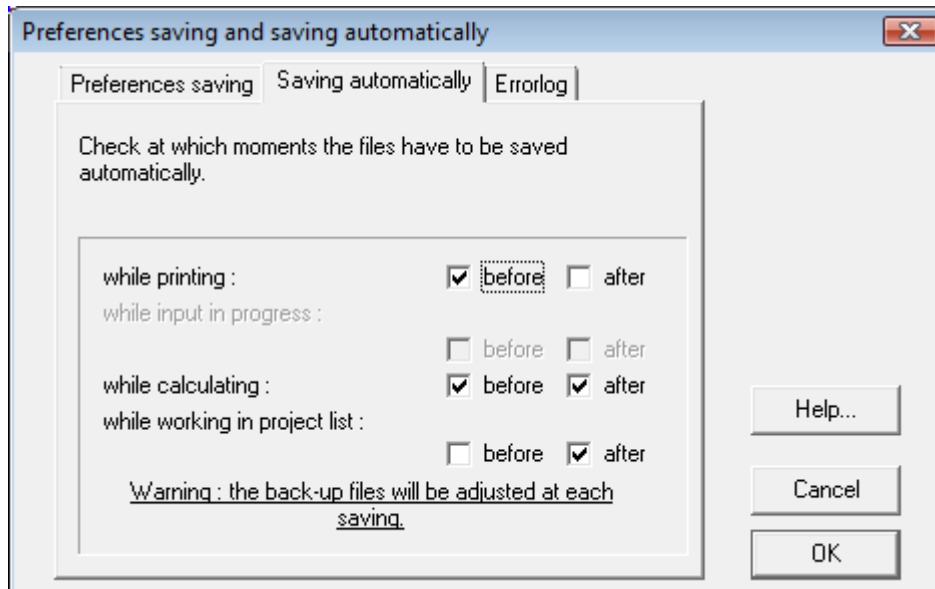


Figure 77: Preferences saving automatically

Besides the fact that you can decide when a saving procedure should be performed, you can also decide to keep a number of back-up files. Each time a save action is performed, the previous version of the file is kept. The number of back-up files that should be kept, can be indicated in the tab **“Preferences saving”** :

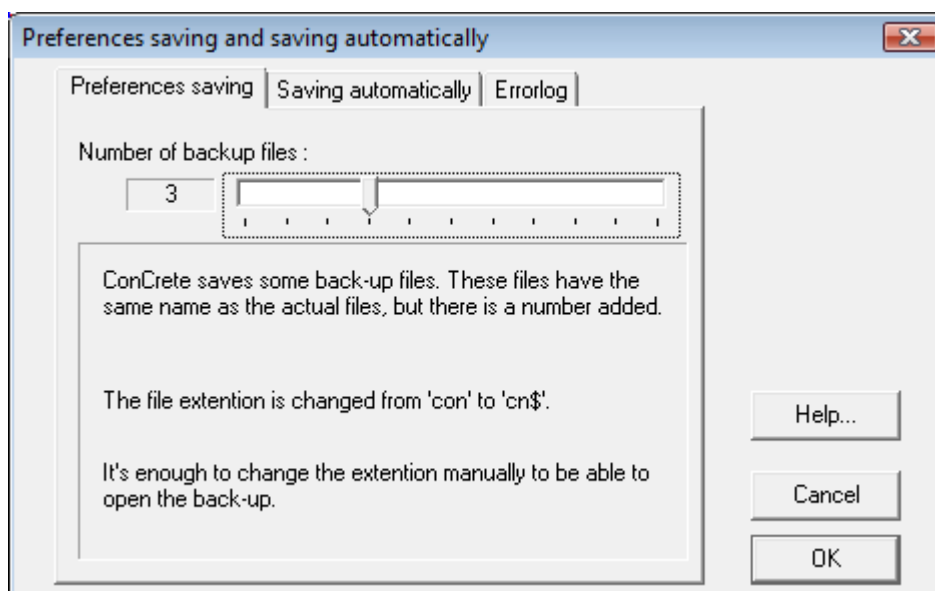


Figure 78: Preferences saving

Higher stated protection is relative. You can always make back-ups of the entered project manually.

12.4. Closing a project

To close a project we select the third command "**Close**" in the **File** menu. If modifications have been made and not yet saved, the program asks us automatically whether we want to save this project or not.

12.5. Editing the project data

The project data were already set in ConCrete. But it may happen that some data have been changed, such as phone numbers or zip codes, or that some information in the stage of Concrete were not yet known, such as name and address of the contractor. Select in the "**File**"-menu the command "**Modify...**" to change the project data. The screen displays the following dialog box in which this data can be modified:

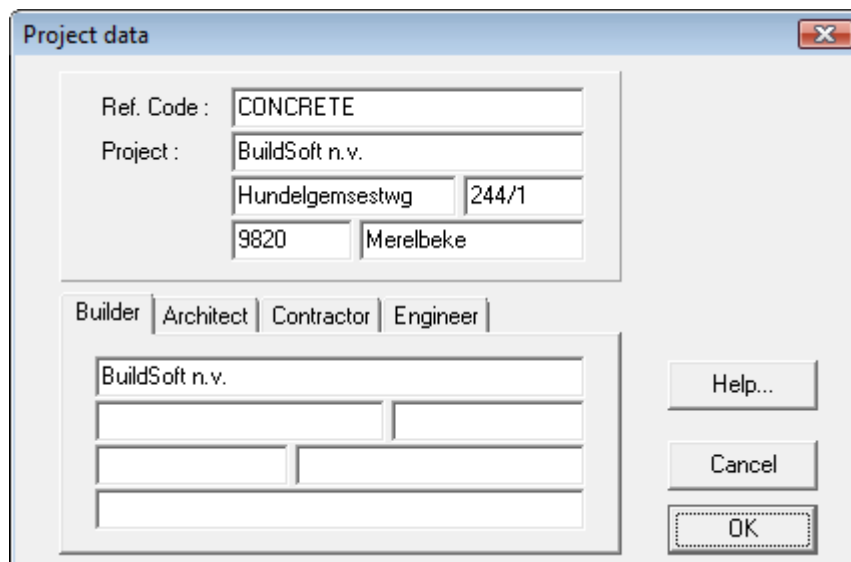


Figure 79: Project data

The coordinates of the project owner, the architect, the contractor or the engineer are represented in four tabs.

12.6. Quitting the program

To quit the program we select the last command "**Quit**" in the **File** menu. If we are working in a project and the modifications have not yet been saved, the program asks us automatically whether we want to save our project or not.


Chapter 13 Useful tips

13.1. Calculate automatically or not

So far the program has always calculated the bar lengths after the complete transformation of the bottom- or top reinforcement sections into bar diameters and after every modification. If we however duplicate a beam to modify it, it can be disturbing that the program interrupts us after every modification for a calculation which after all does not interest us.

We can avoid this by deactivating the fourth option "**Calculate automatically**" in the menu "**Preferences**". Now the program no longer automatically calculates the bar lengths at the end of each bar transformation and after each modification.

We wish to point out that the stirrups are always redistributed.

If all modifications have been entered and we finally want the bar lengths to be calculated, we select the command "**Calculate**" in the menu "**Element**" or click on the  icon. This command calculates the bar lengths of the bottom- and top reinforcement.

13.2. Automatic proposition for the reinforcement

So far, we have defined the diameters of the reinforcement bars by ourselves. In ConCrete Plus, there's an option to get an automatic proposition from the program. ConCrete Plus tries to propose a good reinforcement proposition.

This option can be activated by the "**Reinforce automatically**" command in the preferences menu. The proposition that ConCrete Plus makes, can be modified at any moment (see 2.4).

13.3. Sounds

ConCrete Plus enables you to accompany the entry of data by sounds. Each quantity (like width of a support, length of a span, number of the beam and so on) is accompanied by a beep which serves as a recognition when selecting the data. If we activate the "**Sounds**" command in the "**Preferences**" menu (=marked with a) , a beep can be heard for each question that appears when selecting the editable data in the "**Reinforcement plan**" window.

In the other case, the modification is done purely on a visual basis by a question in the input bar.

13.4. Connections with ConCrete

The connections between ConCrete and ConCrete Plus are situated on four levels.

First of all the format of the files is identical for ConCrete and ConCrete Plus. This makes it possible to complete a project, made in ConCrete, with ConCrete Plus and then afterwards extend it with ConCrete, to step over again on ConCrete Plus.

Secondly ConCrete offers the possibility to transmit a message to ConCrete Plus. This can be very important when the person who calculated the project with ConCrete is not the same as the one who will draw it with ConCrete Plus. If in ConCrete such a message is linked to an element, a dialog box automatically appears with this message on the screen, when we open this beam in ConCrete Plus :

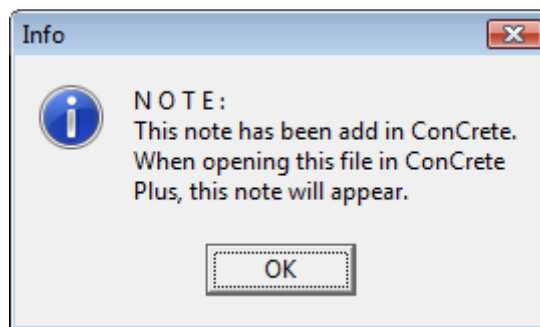


Figure 80: Note


If a message is present, the text balloon left at the bottom in the "**Reinforcement plan**" window is coloured in grey instead of white.

Thirdly, we can indicate the maximum tolerated variation in the dimensions between the calculation in ConCrete and the drawing in ConCrete Plus (see 2.5). If this variation is within the tolerance, there is no new calculation of the beam required and the calculated values are applied for drawing the beam.

Finally, we can exchange elements between ConCrete and ConCrete Plus by the commands "**Edit**" "**Copy**" and "**Edit**" "**Paste**" (see also 8.7).

ConCrete Plus exists as a separate program or can be integrated as a DLL in ConCrete.

If ConCrete Plus is integrated in Concrete, then you can return to the

ConCrete module by the  button. Of course, it is also possible to simply open a the file within ConCrete.

13.5. Use of the arrow-keys

As already stated in 2.5, we can modify in the “**Reinforcement plan**” the beam number, the zone lengths, the column width and the span lengths by selecting these values. We then mentioned, that the program automatically selects the next changeable data after a modification. In that way we can modify the data faster.

There is however another fast way to select a changeable information. By means of the left arrow-, respectively the right arrow key, we can select the previous, respectively the next information. If we keep such a key pressed, the program goes on with the selection in the concerning direction until we release the key.



Instead of the left arrow-, respectively the right arrow key, we can also type "/" respectively "*".


13.6. Use of the "Edit"-menu

One of the most known functions of Windows and other GUI's is the mutual use of the commands "**Undo**", "**Cut**", "**Copy**", "**Paste**" and "**Clear**". Through the commands “Copy” and “Paste”, elements can be copied between files within ConCrete Plus, or from a file in ConCrete to a file in ConCrete Plus and vice versa (see 8.7).

These functions can also be used in the edit box of the input bar. We can e.g. use these functions to calculate certain lengths with the help of a calculation program and copy these values to the edit box of the input bar.

13.7. Zoom in and out on the screen

At the bottom of the “**Reinforcement plan**” window, you'll find a number of functions to improve the legibility and manipulation of the plan. The functions “**zoom in**” (enlarge image) and “**zoom out**” (reduce image) are accessible through the resp. icons  and . You can also use the scroll wheel of the mouse to zoom in and out.

With the  button, you draw a selection frame. The part of the drawing within the selection frame will be scaled to fit at the best to the window size.

Another interesting function is the pan function. With the mouse, you can move the position of the drawing in the window. When you press the left mouse button and keep it pressed when moving the mouse over the window, the position of drawing will follow the position of the mouse.

In the “Diameter determination” window the horizontal and vertical scale of the drawing can be adapted by clicking with the mouse on the buttons “x2” or “:2”. These buttons are situated at the left side from the horizontal scrollbar for the horizontal scale, and above the vertical scrollbar for the vertical scale. These scales don't have any relation with the scale in the “Reinforcement plan” window, nor with the scale that is used for the printing and for the transfer to a CAD program.

13.8. Modifying the look and feel of ConCrete Plus

You can adapt the look and feel of ConCrete Plus to your way of work thanks to the concept of “dockable toolbars”. This means that you can drag and drop the toolbars. You can also drop the “**Reinforcement**” pallet to the icon bar. To make a toolbar completely free, just doubleclick it. If you need no longer a certain toolbar, simply hide it by closing it. Toolbars can be shown again at any moment by the “**Window**” – “**Toolbars**” commands.

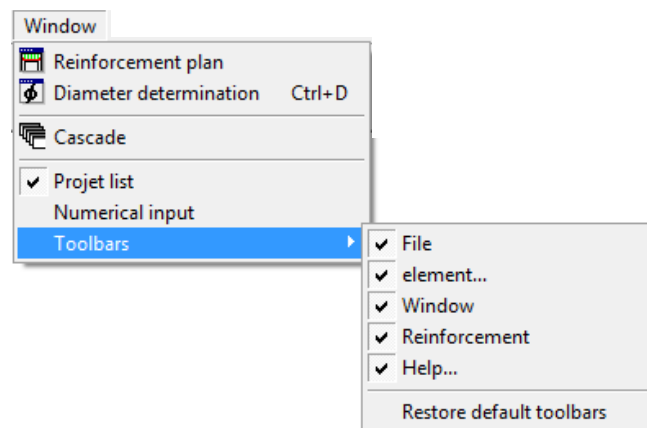


Figure 81: Hiding or showing toolbars

With the command “**Restore default toolbars**” the original ConCrete Plus configuration is reset.

Finally, you can also fix the position of the **project list** window. By doubleclicking the header of the **project list** window or by dragging it to the left of the ConCrete Plus window, the list is attached at the left side of the ConCrete Plus over the whole height of the window.

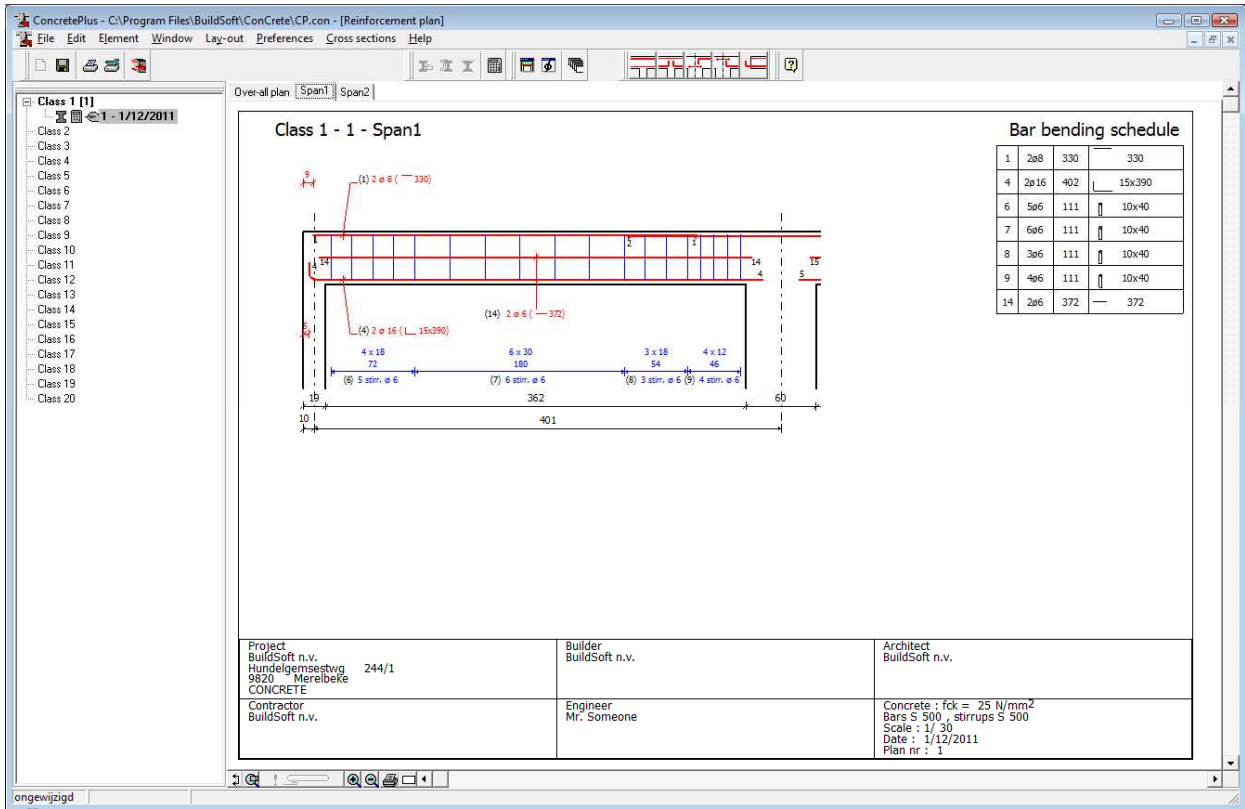


Figure 82: another look and feel of ConCrete Plus

Note: Your personal configuration is automatically saved. Next time you start ConCrete Plus, you'll find the same configuration again.

Chapter 14 Overview of the menus

14.1. "File" - menu

Open...	open an existing project (see 2.2 and 12.1)
Reopen	
Close	close the current project (see 12.4)
Save	save the current project again (see 12.2)
Save as...	save the current project under another name (see 12.2)
Preferences saving...	setting for automatically saving and backup (see 12.3)
Export bar schedule of project... of class... of element...	create a file with the data for the bar bending schedule of all elements of the project, the current class or just the current element (see 9.3)
Create plotfile of project... of class... of element...	create a file with the drawings of all elements of the project, the current class or just the current element for use in a general CAD program (see 11.3)
Page setup...	set up the page (see 10.1)
Print options...	set up the print options (see 10.2)
Print project... class... element...	print the drawing plans of all elements of the current project (see 10.3), the current class (see 10.4) or just of the current element (see 10.5)
Modify...	modify the project data (see 12.5)
Quit	het programma beëindigen (see 12.6)

14.2 "Edit" - menu

Undo	no functionality
------	------------------

Cut	see 13.6 and user's manual Windows or Macintosh
Copy	idem
Paste	idem
Clear	idem
List of classes...	define the classes (see 8.2)

14.3. "Element" - menu

Edit	modify the selected element (see 8.4)
Duplicate	duplicate the selected element (see 8.6)
Remove	delete the selected element (see 8.7)
Close	store the selected element in the project list (see 8.3)
Calculate	calculate the bar lengths (see 13.1)
Numbering bars...	define the number to start the numbering of the bars (see 9.2)

14.4. "Window" - menu

Reinforcement plan	brings the window "Reinforcement plan" to the front (see 2.3)
Diameter determination	brings the window "Diameter determination" to the front (see 2.4.1)
Cascade	sets the windows in cascade
Project list	brings the window "Project list" to the front (see 2.3)
Numerical input	shows the input palet
Toolbars	manage the toolbars (see 13.8)

14.5. "Lay-out" - menu

Style definition...	define the styles (see 5.2)
Style choise...	select a style for each type of component (see 5.3)
Background...	modify the background color (see 5.5)
Layer names...	rename the layers (see 5.4)
Title frame position	
left...	
right...	position the title frame (see 5.6)

Position of bar bending schedule

top

bottom position the bar bending schedule (see 5.7)

Title position

Top left

Top right

Top center

position the title (see 5.8)

Comments

Bar legend

define the symbol for the bar diameter (see 4.2)

Stirrups...

define the text that accompanies the stirrups in the longitudinal view (see 4.3)

Bars...

define the text that accompanies the longitudinal reinforcement in the longitudinal view (see 4.4)

Cross sections...

define the text that accompanies the longitudinal reinforcement and the stirrups in the longitudinal view (see 4.5)

Form text...

define the look of the text that accompanies the reinforcement (see 4.6)

Numbering bars...

define the layout of the bar numbers (see 9.2)

Bar codes...

define a unique code for the different shape types (see 4.7)

Plot settings

File format...

define the format for the file to export to a CAD program (see 11.1.1)

Font...

define the parameters of the font for the export to a CAD program (see 11.1.2)

Plot scale...

define the scale used for direct printing and for the transfer to a CAD program (see 11.1.3 and 10.2)

14.6. "Preferences" - menu

Units

m

cm

mm

define the units for the geometry (see 6.2 and 6.4)

Precision	
cm	
mm	define the precision for the geometry dimensions (see 6.3 and 6.4)
Plot units	
cm	
mm	define the units for the export to a CAD program (see 11.2)
Calculate automatically	calculate the bar lengths immediately after each modification (see 13.1)
Save automatically	save automatically after certain operations (see 12.3)
Reinforce automatically	obtain automatically a proposition for the bar diameters (see 13.2)
Sounds	get some sound support when selecting editable dimensions (see 13.2)
Selection colour	set the selection colour
Bar tolerances...	change the tolerances between the theoretically required reinforcement quantity and the practically provided bars (see 7.1)
Longitudinal reinforcement	define the diameters that may be used for the longitudinal bars
Web reinforcement...	define the diameter and distance between of the web reinforcement (see 7.6)
Dimension tolerances...	define the tolerances on the geometry between ConCrete and ConCrete Plus (see 2.5)
Maximum bar length	set the maximum bar length (see 7.7)
Stirrups...	set the parameters for the calculation of the stirrups
Hook lengths	define the length of the hooks (see 9.3)
Language	choose the user language

14.7. "Cross section" - menu

Look to the	
left	
right	define the view direction of the cross sections (see 3.2)
Remove	remove a cross section (see 3.3)

14.8. "Help" - menu

Help...	get access to the help file
Mail to BuildSoft...	start an email with the BuildSoft email address already filled in
Network...	define whether to search for a dongle in the network (not for CodeMeter)
About ConCrete Plus	general information about this program