

Digital Door Eye

Product Features:

Installation Friendly (5~10 minutes estimated)

Low costs to own

View outside of the door easy and clearly at real time

Auto object detecting and capturing

High quality digital camera embedded

Rechargeable battery (Li-Polymer) embedded

SD Card support



Home Security Digital Camera

User Manual

Product Spec.:

Camera Pixel: 1.3 Mega Pixels (CMOS Sensor)

IR Sensor Angle: 80 degree (Max)

Detect Range: 1.2 Meter (Max)

Display Size: TFT LCD 2.4 Inch

Screen Resolution: 640*480

Embedded Memory: 16MB

External Memory: SD Card (2GB support maximum)

Capture (Snap): Manual Snap (MENU Key)

Or Auto Snap (During stand by mode)

Storage Image Format:

1024 X 960, or 640 X 480 JPEG compression

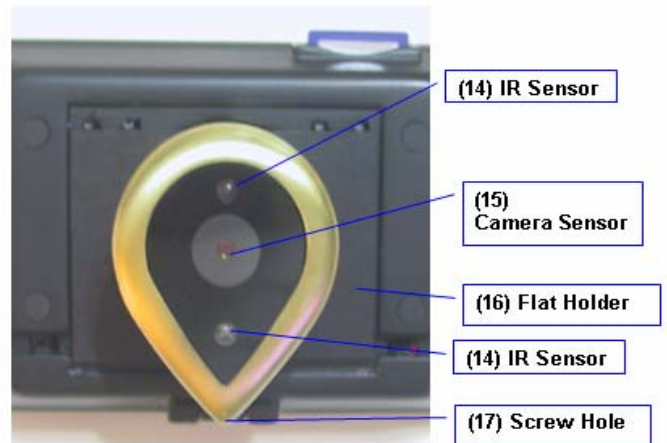
Video Output: NTSC/PAL system supported (Adjustment)

Power: Embedded Rechargeable Battery (Li-polymer, 3.7V, 2,200 mAh)

Or Power Adapter (DC 5V)

Power Consumption: 2.5W

Function Guide:



Package Contents:

Digital Door Eye x 1 Unit/ User Manual x 1 Copied
Camera Module x 1 Unit/ Power Adapter x 1 Unit
Flat Holder x 1 Unit/ Screw x 1 unit
Cable line stick x 4 Units

Note: We keep right to revise specifications, product configurations and accessories without notice

Installation Guide



Step1: Please check all items from the box (Enlarge picture of Step 1, please also refer [Installation Parts Check](#)).



Step2: If no hole created from door yet, please drill the hole from the door (Recommend 165 ~ 175 (CM) height depends on practical application) which diameter size range of hole size estimated recommend are between $\phi 3.5 \sim \phi 4.2$ (CM)



Step3: Hold "Part C" to place inside of the door. Make sure its circle hole does overlap the hole of the door.



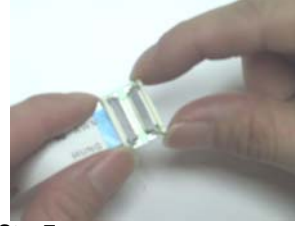
Step4: Then take "Part B1" and "Part E" through the hole of door and "Part C" from outside to inside. Make sure tip side of "Part B1" toward down.



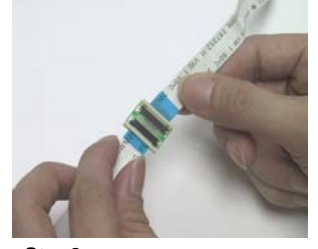
Step5: Take "Part B2" through "Part C" and the hole of door and from indoor to outdoor, simultaneously also make sure "Part E" does through "Part B1" properly. Then screw and fasten with "Part B1" to fix together in the door



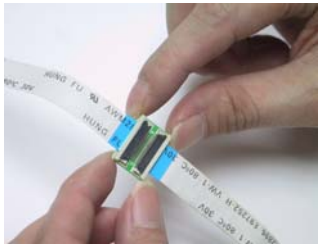
Step6: Recheck and make sure "Part E" from "Part B 1" does through the hole of door and "Part C" and "Part B2" from outdoor to indoor properly.



Step7: Please click and fasten up "Part E" and "Part F" (Two side of plastic clicker)



Step8: Please toward up (words printed side) surface of cable line from "Part E" and "Part F" are in the same side



Step9: Please recheck "Part E" and "Part F" connecting properly. Then **signal cable line** connecting completed.



Step10: Set cable line (from "Part D") properly into bottom concave of backside from "Part A"



Step11: Organize and hide **signal cable line** into "Part B2". Then place "Part A" toward up and hang up two top of concave points (from backside of "Part A") with two top of flat hooks from "Part C", and toward down. Screw bottom of "Part C" properly



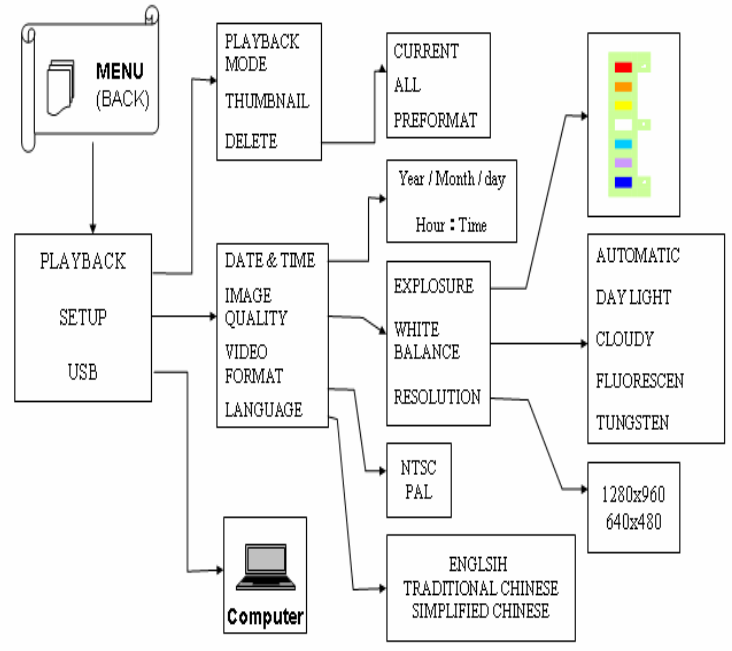
Step12: Plug power from "Part D" and installation completed.

Total installation estimated 5 ~ 10 Min (Not included door hole drilled)

Installation Parts Check



Operation Flow Chart



Problem Shooting:

Cannot view outside at real time:

Please recheck Step7~Step 9 again, or make sure digital door eye does install fully completed. Please make sure each step properly of Installation Guide from User Manual.

Captured image are not clear:

Make sure you do take off the transparent protection sticker from surface of camera module, before you start to operate the digital door eye. Or clean the up surface of camera sensor from Camera Module via soft (tender) cloth carefully and slowly.

Incorrect date on captured images:

Switch off condition: After turning on Main Switch (Then 5 Secs estimated to wait), until green LED is blinking, and please set up time/date/year properly, before digital door eye operation formally.
Switch on condition: Choose "DATE & TIME" under "SETUP" from MENU Key, then set up correct time/date/year properly.

Set up Auto Captured (Snap) function (Stand by mode):

Please always choose "MENU Key (back function)" as last selection, or digital door eye cannot back to stand by mode in automatic capturing function.

Warning Items:

Before Auto/Manual Captured (Snap) Images operation formally:

According to provide clearly captured image quality, please take off the transparent protection sticker from surface of camera module, before you start to operate the digital door eye formally after installation completed. Please adjust the time, date and personal favor function setting, after switch on (Main Switch) each time.

Review the captured images:

1. Review Captured Image from SD Card:

Please turn off Main Switch power, before you take off SD card, or captured image may destroy, or uncompleted to review successfully.

2. Review captured image via USB slot from Computer.

Please find and connect USB cable line with your computer. But, please DO NOT choose USB mode under MENU, when there is no USB cable line connecting.

Note: 1. After SD card inserting, any capture image will store into SD card directly only.
2. The maximum capacity of SD card support are 2GB density.
3. Recommend the density applications of SD card are 512MB. (7,000 images estimated)

LED blinking:

Please do not turn off Main Switch when LED is blinking (The object is capturing).

Note: LED blinking indicates digital door eye is in operation procedure, such like the object detecting, capturing, and photo recording automatically...etc.

Video Out:

We strongly recommend to apply the length of video cable line is less than 10 meters, that can enhance the quality of video out performance are in steady condition.

Stand by mode from embedded battery: The maximum of embedded battery (Li-polymer battery, 2,200 mAh) estimated are 185 hours maximum, which based on under pure stand by condition such like no any object detection, captured, manual operation conditions. Please charge the battery up to 4 hours fully from first time operation (Make sure do switch off Display Switch (DISP) Key).

Power Saving: Please always switch off Display Switch (DISP) Key (Not means Main Switch Key) when digital door eye is under stand by mode, that can enhance more power saved.

Note: The guide of stand by mode (Auto Captured (Snap)), please always choose "MENU Key (back function)" as last selection, that digital door eye can into automatic captured function.

Embedded battery replacement: Normally, the ordinary recharged life-cycle of embedded battery are 500 times. Please contact with your local dealer or distributor to replace the battery when necessary.