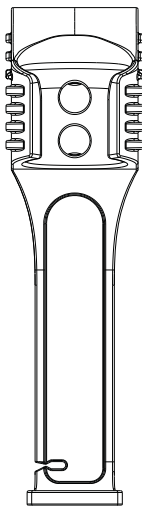


KLARUS



KLARUS Charging Cradle provides a convenient way to store and charge your RS11 flashlight, or to store other KLARUS flashlights. The cradle is fixed onto a wall or flat surface – in a vehicle for example – and works with the RS11 magnetic charging cable. You just simply push the RS11 into the cradle and the magnetic connection on the charging cable automatically self locates onto the charging point on the RS11.

It's ideal for using in a vehicle, at home or in the office. Rapid response professionals, such as fire officers and law enforcement personnel will find the charging cradle extremely useful.

Features

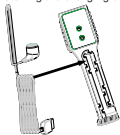
- Uses 90% black PU to make it soft, durable and drop/ scratch resistant
- The RS11 magnetic charging cable self-locates to make the connection when you need to charge your flashlight – making it extremely effective for rapid response professionals
- Can be installed on any flat surface, using screws, glue or fixing paste
- Uses an international standard, quick to use wire wrapping slot, which make it easy install and disassemble

Specification

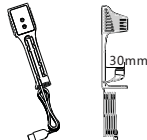
- Material: 90% black PU
- Lifespan: 10,000 times
- Designed for: RS11 and future rechargeable lights from KLARUS
- Also compatible as a holder for the XT11 and XT10
- Application places: Vehicle, home, office, garage, etc
- Working temperature: -20°C ~ 70°C
- Maximum stress: 500g
- Color: black
- Dimensions: 138mm (Length) x 38.2mm (Width) x 43mm (Thickness)
- Weight: 62.6g (including all the material)
- Included accessories: two screws, two rubber plugs, one double-sided tape, two screw sleeves

Installation method

1. Installing the charging cord to the slot



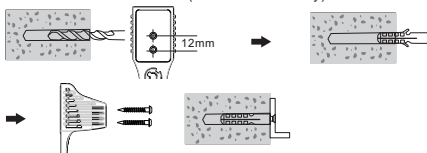
Step 1: Install the charging cord to the slot



Step 2: Install the charging cable's magnetic connection to the bottom of the cradle

When install the magnetic connection side of charging cord, it will be better only extend about 30mm, make the cord same as the button reflector's center point

2.1. Installation with screws (Recommended way)



Step 1: Drill two holes (5mm diameter and 40mm depth) into the wall, ensuring that they are vertically aligned and about 12mm apart

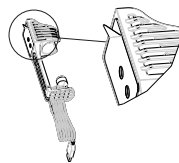
Step 2: Insert raw plugs into the holes

Step 3: Using a screw-driver and the screws, fix the cradle into place

2.2. Installation with self-adhesive strip (Only for the smooth surface)

Peel the paper from the adhesive strip, and place cradle onto a smooth and clean surface, such as glass, table, door, refrigerator, and other surface not suitable to punch.

Remark: The stickiness is much stronger after sticking on the wall without any load for 24 hours. For long-term using, the user is suggested to fix the cradle with screws.



3. Installation with self-adhesive strip and screws (Recommended way)

This method is a combination of the methods above. Use the self-adhesive strip and two screw holes to fix the cradle to the wall.



4. Place the light for charging

Put the RS11 in the cradle. The charging cable will self-locate and charging will commence. Charging status indicating light can be seen through the mirror at the bottom of the charging cradle. You can use it as a holder when you don't need to charge the light.

Due to the magnetic affect, the charging cable will connect to the light's tail-end automatically when you insert the light in a particular way.

Installation warnings

1. The self-adhesive fixing method requires a smooth and clean surface and affective adhesion.
2. You may need to use a higher strength adhesive when reinstalling the cradle to a surface

Warranty Service

Klarus guarantees the product against defects in material and workmanship. Defective products can be exchanged for replacement through a local distributor/ dealer within the 15 days of purchase. This warranty does not cover damage caused by accident, unreasonable use or product alteration. Failure to follow the general maintenance directions could result in damage to your products that may not be covered by the Klarus warranty

KLARUS Charging Cradle User Manual RC11

KLARUS LIGHTING TECHNOLOGY (HONG KONG) CO., LIMITED

4A, Longsheng Business Mansion, Dalang Street, Bao'an District, Shenzhen City, Guangdong Province, 518109, China

www.klaruslight.com

Email: info@klaruslight.com

Phone: +86-755-27700110

Fax: +86-755-27753445

