



Washer-Dryer User's Manual

WDA1056143H





This product was manufactured using the latest technology in environmentally friendly conditions.

1 Important instructions for safety and environment

This section contains safety instructions that will help protect from risk of personal injury or property damage. Failure to follow these instructions shall void any warranty.

1.1 General safety

CAUTION



- This product can be used by children at and above 8 years old and by persons whose physical, sensory or mental capabilities were not fully developed or who lack experience and knowledge provided that they are supervised or trained on the safe usage of the product and the risks it brings out. Children must not play with the product. Cleaning and maintenance works which can be done by users should not be performed by children unless they are supervised by someone.

CAUTION



- Never place the product on a carpet-covered floor. Otherwise, lack of airflow beneath the machine will cause electrical parts to overheat. This will cause problems with your product.

NOTE



- Always have the installation and repairing procedures carried out by the Authorized Service Agent. Manufacturer shall not be held liable for damages that may arise from procedures carried out by unauthorized persons.

1.1.1 Electrical safety

DANGER



- If the product has a failure, it should not be operated unless it is repaired by the Authorized Service Agent. There is the risk of electric shock!
- Never wash the product by spreading or pouring water onto it! There is the risk of electric shock!

CAUTION



- If the power cable is damaged, it must be replaced by the manufacturer, after-sales service or a similarly qualified person (preferably an electrician) or someone designated by the importer in order to avoid possible risks.

CAUTION



- Unplug the product when not in use.
- Never touch the plug with wet hands! Never unplug by pulling on the cable, always pull out by grabbing the plug.
- Unplug the product during installation, maintenance, cleaning and repairing procedures.
- Do not make connections via extension cables or multi-plugs.

NOTE



- This product is designed to resume operating in the event of powering on after a power interruption. If you wish to cancel the programme, see "Cancelling the programme" section.

Important instructions for safety and environment

1.1.2 Product safety



DANGER

- Never open the loading door or remove the filter while there is still water in the drum. Otherwise, risk of flooding and scalds from hot water will occur.



CAUTION

- The water supply and draining hoses must be securely fastened and remain undamaged. Otherwise, there is the risk of water leakage.

NOTE



- Do not force open the locked loading door. The loading door will be ready to open just a few minutes after the washing cycle is completed. The loading door will not open if the machine is not cooled down enough after the programme. You can ensure a faster cool down of the machine by running a 10-minute drying programme, or wait until it cools down by itself. Do not force the loading door open. The door and the lock mechanism can get damaged.
- There should not be any lockable, sliding or hinged door that may restrain the loading door to open fully in the installation place of this product.
- Follow the instructions on the textile tags and on the detergent package.
- Only detergents, softeners and supplements suitable for washing machines should be used.
- Do not install or leave this product in places where it will be exposed to weather conditions.
- Controls should not be tampered with.

1.1.3 Warnings for dryer



DANGER

- As the laundry which had been cleaned, washed, soiled or stained with benzine/diesel oil, dry cleaning solvents or other combustible and explosive materials before will emit flammable or explosive vapour, they should not be dried in the machine. This may cause risk of fire.
- Clothes soiled with liquid cooking oil, acetone, alcohol, benzene, gas oil, stain remover, turpentine, waxes or wax removers must be washed with hot water and plenty of detergent before they are dried. This may cause risk of fire.
- Clothes or pillows supported by rubber foam (latex foam), shower caps, water-repellent textile products, rubber supported materials and rubber foam pads should not be dried in the machine. This may cause risk of fire.
- If you use Washing Balls, Detergent Scales, Laundry Cages or Balls while washing in your appliance, these may melt while drying. Do not use these products if drying will be selected. This may cause risk of fire.
- Never run the drying function when you are using industrial chemicals for cleaning. This may cause risk of fire.



DANGER

- Do not touch the door glass with bare hands after drying. This may cause risk of burn.
- To keep the laundry under a temperature at which they will not be damaged, a cooling step is carried out as the last stage. If you open the loading door before cooling step is completed, you may be exposed to hot vapour. This may cause risk of scalding.
- When drying programmes are interrupted (cancelling the programme or power cut), laundry in the machine may be hot. Be careful.



CAUTION

- Do not stop the machine before the drying programme is completed. If you have to stop it, take out all laundry promptly and spread them on somewhere appropriate where they can cool down.
- Do not dry tulle curtains, rugs and blankets in the machine.
- Your product is suitable to operate under ambient temperatures between 0°C and +35°C.
- Ambient temperatures between 15°C and +25°C are the ideal operating temperatures for your product.
- Pay care that pets do not enter into the product. Check inside of the product prior to use.
- Do not perform drying by overloading the machine. Follow the maximum load amounts specified for drying.

Important instructions for safety and environment

CAUTION



- Drying should not be performed on leather garments or garments containing leather (e.g. leather jeans tags, etc.). Leather piece may colour.
- Turn off the machine in failures that cannot be eliminated by applying the information given in the safety instructions, then unplug it and call the Authorized Service Agent.
- It is possible only to wash the laundry or only to dry the laundry or perform both washing and drying in the washer-dryer. Machine should not be used for drying for a long time only with damp load. If the machine is used only for drying, any of the short washing programmes should be run without putting in laundry after every 15 cycles.
- Control all clothes before loading the machine to make sure that no belongings such as lighter, coins, metal pieces, pins, etc have been left in the pockets or among them.
- Underwear with metal supports should not be dried in the machine. Metal supports may get loose and broken during drying process, thus cause damage on the cloth.
- Do not dry voluminous laundry such as duvet and alike in the machine. Otherwise, your laundry may get damaged.

NOTE



- Do not dry the unwashed laundry in the machine.
- Do not use fabric softeners or antistatic products in the machine unless these are recommended by their manufacturers.
- Fabric softeners and products alike should be used in accordance with the instructions of their producers.
- Do not dry delicate clothes such as silk, woollen, etc. in the machine. Otherwise, woollen clothes may shrink and become smaller and other delicate clothes may get damaged.
- Check the symbols on the product label on the garment prior to Drying and Washing processes.

1.2 Intended use

NOTE



- This product has been designed for domestic use. It is not suitable for commercial use and it must not be used out of its intended use.
- Use the product only for washing, rinsing and drying of textile products that are marked accordingly.
- The manufacturer waives any responsibility arisen from incorrect usage or transportation.
- The service life of your product is 10 years. During this period, original spare parts will be available to operate the appliance properly.

1.3 Children's safety

CAUTION



- Keep children under 3 years of age away from the appliance unless they are supervised.
- Packaging materials are dangerous to children. Keep packaging materials in a safe place away from reach of the children.
- Electrical products are dangerous for the children. Keep children away from the product when it is in use. Do not let them to tamper with the product. Use child lock to prevent children from intervening with the product.
- Do not forget to close the loading door when leaving the room where the product is located.
- Store all detergents and additives in a safe place away from the reach of the children by closing the cover of the detergent container or sealing the detergent package.

1.4 Compliance with WEEE Directive



- This product complies with EU WEEE Directive (2012/19/EU). This product bears a classification symbol for waste electrical and electronic equipment (WEEE).
- This product has been manufactured with high quality parts and materials which can be reused and are suitable for recycling. Do not dispose of the waste product with normal domestic and other wastes at the end of its service life. Take it to the collection center for the recycling of electrical and electronic equipment. Please consult your local authorities to learn about these collection centers.

1.5 Package information

- Packaging materials of the product are manufactured from recyclable materials in accordance with our National Environment Regulations. Do not dispose of waste package together with domestic or other wastes. Dispose them at package collection points specified by the local authorities.

2 Technical specifications

Models	WDA1056143H
Maximum dry laundry capacity (kg) _Washing	10.5
Maximum dry laundry capacity (kg) _Drying	6
Height (cm)	84
Width (cm)	60
Depth (cm)	63
Net weight (±4 kg.)	87
Electrical input (V/Hz)	230 V / 50 Hz
Total current (A)	10
Total power (W)	2200
Spin speed (rpm max.)	1400

NOTE



- *Technical specifications may be changed without prior notice to improve the quality of the product.*
- *Figures in this manual are schematic and may not match the product exactly.*
- *Values stated on the product labels or in the documentation accompanying it are obtained in laboratory conditions in accordance with the relevant standards. Depending on operational and environmental conditions of the product, these values may vary.*

3 Installation

Refer to the nearest Authorized Service Agent for installation of the product. To make the product ready for use, review the information in the user manual and take care that the electricity, tap water supply and water drainage systems are appropriate before calling the Authorized Service Agent. If they are not, call a qualified technician and plumber to have any necessary arrangements carried out.



DANGER

- **Have the installation and electrical connections of the product made by the Authorized Service Agent. Manufacturer shall not be held liable for damages that may arise from procedures carried out by unauthorized persons.**



DANGER

- **Product The weight of your product is not suitable to be carried by one person.**



CAUTION

- Prior to installation, visually check if the product has any defects on it. If so, do not have it installed. Damaged products cause risks for your safety.



CAUTION

- Preparation of the location and electrical, tap water and waste water installations at the place of installation are under customer's responsibility.
- Make sure that the water inlet and discharge hoses as well as the power cable are not folded, pinched or crushed while pushing the product into its place after installation or cleaning procedures.

3.1 Appropriate installation location

- Place the machine on a rigid floor. Do not place it on a long pile rug or similar surfaces.
- Do not place the product on the power cable.
- Do not install the product at places where temperature may fall below 0°C. (See, Warnings for drying)
- Place the product at least 1.5 cm away from the edges of other furniture.
- There should not be any lockable, sliding or hinged door that may restrain the loading door to open fully in the installation place of this product.
- Operate the product in a well-ventilated and dust-free environment.

3.2 Removing packaging reinforcement



Tilt the machine backwards to remove the packaging reinforcement. Remove the packaging reinforcement by pulling the ribbon.



DANGER

- **The product is heavy. Remove the packaging reinforcement as illustrated.**
- **Pay attention not to squeeze your hand under the machine during this procedure.**

3.3 Removing the transportation locks



CAUTION

- Do not remove the transportation locks before taking out the packaging reinforcement.
- Remove the transportation safety bolts before operating the washing machine! Otherwise, the product will be damaged.

Installation



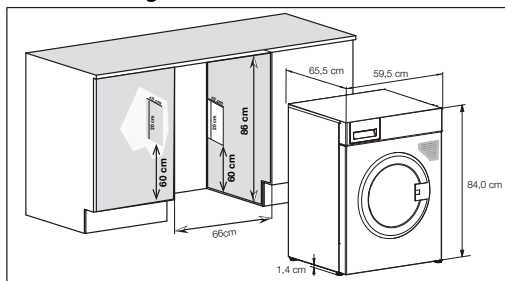
- 1 Loosen all bolts with the tool supplied in the User Manual bag until they turn freely. **(C)**
- 2 Remove transportation safety bolts by turning them gently.
- 3 Attach the plastic covers supplied in the User Manual bag into the holes on the rear panel. **(P)**

NOTE



- Keep the transportation safety bolts in a safe place to reuse when the machine needs to be moved again in the future.
- Never move the product without the transportation safety bolts properly fixed in place!

3.4 Flush usage with the bench



CAUTION



- Your machine should never be operated without the top plate.
- When the Washer-Dryer is placed under the bench, front of the machine should never be blocked by the cupboard door.
- When the Washer-Dryer is placed under the bench, air vents must be bored into the left and right sides of the cupboard.

NOTE



- Follow the above dimensions when installing the product under the bench. These dimensions are indispensable to avoid any change in the performance of your machine.
- Drying washing machine can be used under a bench if the height of the bench allows.
- At least 3 cm clearance must be left between the sides and the back of the product and the wall when it is installed under the bench or in a cupboard.

3.5 Connecting water supply

NOTE



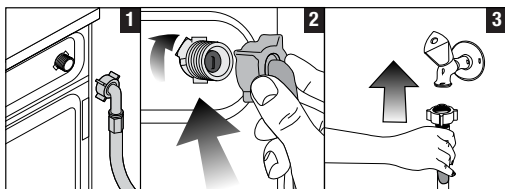
- The water supply pressure required to run the product is between 1 to 10 bars (0.1 – 1 MPa). It is necessary to have 10 – 80 litres of water flowing from the fully open tap in one minute to have your machine run smoothly. Attach a pressure reducing valve if water pressure is higher.
- If you are going to use the double water-inlet product as a single (cold) water-inlet unit, you must install the supplied blind stopper to the hot water valve before operating the product. (Applies for the products supplied with a blind stopper group.)

CAUTION



- Models with a single water inlet should not be connected to the hot water tap. In such a case the laundry will get damaged or the product will switch to protection mode and will not operate.
- Do not use old or used water inlet hoses on the new product. It may cause stains on your laundry.

Installation



- 1 Connect the special hoses supplied with the product to the water inlets on the product. Red hose (left) (max. 90 °C) is for hot water inlet, blue hose (right) (max. 25 °C) is for cold water inlet.



CAUTION

- Ensure that the cold and hot water connections are made correctly when installing the product. Otherwise, your laundry will come out hot at the end of the washing process and wear out.

- 2 Tighten all hose nuts by hand. Never use a tool when tightening the nuts.
- 3 Open the taps completely after making the hose connection to check for water leaks at the connection points. If any leaks occur, turn off the tap and remove the nut. Retighten the nut carefully after checking the seal. To prevent possible water leakages, keep the taps closed when the machine is not in use.

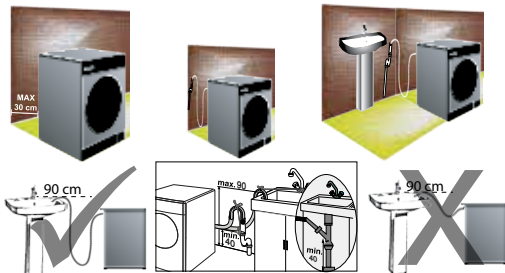
3.6 Connecting to the drain

- Connect the end of the drain hose directly to the wastewater drain, sink or to the washbasin.



CAUTION

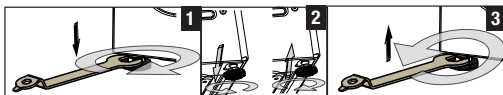
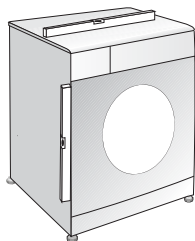
- Your house will be flooded if the hose comes out of its housing during water discharge. Moreover, there is risk of scalding due to high washing temperatures! To prevent such situations and to ensure smooth water intake and discharge of the machine, fix the end of the discharge hose tightly so that it cannot come out.



- The distance to the wall so that the machine be placed up to 30 cm.
- Attach the hose at a height of at least 40 cm, and 90 cm at most.
- In case the hose is elevated after laying it on the floor level or close to the ground (less than 40 cm above the ground), water discharge becomes more difficult and the laundry may come out excessively wet. Therefore, follow the heights described in the figure.
- To prevent flowing of waste water back into the machine and to allow for easy discharge, do not immerse the hose end into the waste water or do not drive it in the drain more than 15 cm. If it is too long, cut it short.
- Pay care not to bend the end of the hose, step on it or pinch the hose between the drain and the machine.
- If the length of the hose is too short, use it by adding an original extension hose. Length of the hose may not be longer than 3.2 m. To avoid water leak failures, the connection between the extension hose and the drain hose of the product must be fitted well with an appropriate clamp as not to come off and leak.

Installation

3.7 Adjusting the feet



CAUTION



- In order to ensure that the product operates more silently and vibration-free, it must stand level and balanced on its feet. Balance the machine by adjusting the feet. Otherwise, the product may move from its place and cause crushing and vibration problems.

- 1 Loosen the nuts on the feet in the direction of arrow with the tool supplied in the User Manual bag.
- 2 Adjust the feet until the product stands level and balanced. You can move the feet downwards by turning them counterclockwise or upwards by turning clockwise.
- 3 Tighten all lock nuts again in the direction of arrow by the tool supplied. You can move the nuts upwards by turning them counterclockwise or downwards by turning clockwise.

3.8 Electrical connection

Connect the product to a grounded outlet protected by a 16 A fuse. Our company shall not be liable for any damages that will arise when the product is used without grounding in accordance with the local regulations.

- Connection must comply with national regulations.
- Power cable plug must be within easy reach after installation.
- If the current fuse or circuit breaker is less than 16 Amperes, please have a qualified electrician install a 16 Ampere fuse or circuit breaker.
- The voltage specified in the "Technical specifications" section must be equal to your mains voltage.

DANGER



- Damaged power cables must be replaced by the Authorized Service Agents.

3.9 Transportation of the product

- 1 Unplug the product before transporting it.
- 2 Remove water drain and water supply connections.
- 3 Drain all water that has remained in the product. See. 6.6
- 4 Install transportation safety bolts in the reverse order of removal procedure; see 3.3.

DANGER



- The weight of your product is not suitable to be carried by one person.
- The product is heavy; it should be carried by two persons very carefully on the stairs. Falling of your product on you may cause disabilities.

CAUTION



- Packaging materials are dangerous to children. Keep packaging materials in a safe place away from reach of the children.

NOTE



- Never move the product without the transportation safety bolts properly fixed in place!

4 Preparation

4.1 Sorting the laundry

- Sort laundry according to type of fabric, colour, and degree of soiling and allowable water temperature.
- Always obey the instructions given on the garment tags.

4.2 Preparing laundry for washing

- Laundry items with metal attachments such as, underwired bras, belt buckles or metal buttons will damage the machine. Remove the metal pieces or wash the clothes by putting them in a cotton laundry bag or cotton pillow case. Moreover, such clothes may warm up excessively during drying and get damaged. For this reason, do not dry such laundry in the machine.
- Put small size clothes such as infant's socks and nylon stockings in a cotton laundry bag or cotton pillow case.
- Place curtains in without compressing them. Remove curtain attachment items. Do not dry tulle curtains in the machine.
- Fasten zippers, sew loose buttons and mend rips and tears.
- Wash "machine washable" or "hand washable" labeled products only with an appropriate programme. Do not dry such clothes in the machine; either hang or spread them to dry.
- Do not wash colours and whites together. New, dark coloured cottons release a lot of dye. Wash them separately.
- Use only dyes/colour changers and limescale removers suitable for machine wash. Always follow the instructions on the package.

NOTE



- Laundry that are subjected to materials such as flour, lime dust, milk powder, etc. intensely must be shaken off before placing into the machine. Such dusts and powders on the laundry may build up on the inner parts of the machine in time and can cause damage.
- Keep laundry items made of Angora wool in the freezer for a few hours before washing. This will reduce pilling.
- Wash trousers and delicate laundry turned inside out.
- Tough stains must be treated properly before washing. If unsure, check with a dry cleaner.
- Take out all substances in the pockets such as coins, pens and paper clips, and turn pockets inside out and brush. Such objects may damage the product or cause noise problem.

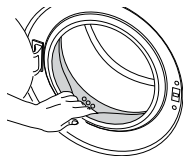
4.3 Things to be done for energy saving

Following information will help you use the product in an ecological and energy-efficient manner.

- Operate the product in the highest capacity allowed by the programme you have selected, but do not overload. See, "Programme and consumption table".
- Always follow the instructions on the detergent packaging.
- Wash slightly soiled laundry at low temperatures.
- Use faster programmes for small quantities of lightly soiled laundry.
- Do not use prewash and high temperatures for laundry that is not heavily soiled or stained.
- If you plan to dry your laundry, select the highest spin speed recommended during washing process.
- Do not use detergent in excess of the amount recommended on the detergent package.

4.4 First use

Before starting to use the product, make sure that all preparations are completed in accordance with the instructions in sections "Important safety and environment instructions" and "Installation".



To prepare the product for washing laundry, perform first operation in Drum Cleaning programme. If your machine is not featured with this program, apply the method described in 6.2.

NOTE



- Use an anti-limescale suitable for the washing machines.
- Some water might have remained in the product due to the quality control processes in the production. It is not harmful for the product.

Preparation

4.5 Correct load capacity

The maximum load capacity depends on the type of laundry, the degree of soiling and the washing programme desired. The machine automatically adjusts the amount of water according to the weight of the loaded laundry.

DANGER



- **Follow the information in the “Programme and consumption table”. When overloaded, machine's washing performance will drop. Moreover, noise and vibration problems may occur. For a good drying performance, do not dry laundry more than the amounts specified.**

Laundry type	Weight (g)	Laundry type	Weight (g)
Bathrobe	1200	Hand towel	100
Napkin	100	Evening gown	200
Duvet cover	700	Underclothing	100
Bed Sheet	500	Men's overalls	600
Pillowcase	200	Men's shirt	200
Tablecloth	250	Men's pajamas	500
Towel	200	Blouses	100

4.6 Loading the laundry

- 1 Open the loading door.
- 2 Place laundry items loosely into the machine.
- 3 Push the loading door to close until you hear a locking sound. Ensure that no items are caught in the door.

NOTE



- *The loading door is locked while a programme is running. The door can only be opened a while after the programme comes to an end. The loading door will not open until the temperature drops if the inside of the machine is very hot at the end of the programme.*

CAUTION



- **In case of misplacing the laundry, noise and vibration problems may occur in the machine.**

4.7 Using detergent and softener

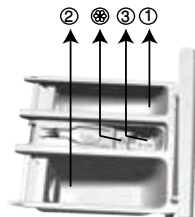
NOTE



- *When using detergent, softener, starch, fabric dye, bleach or limescale remover read the manufacturer's instructions on the package carefully and follow the suggested dosage values. Use measuring cup if available.*

4.7.1 Detergent drawer

The detergent drawer is composed of three compartments:



- (1) for prewash
- (2) for main wash
- (3) for softener
- (*) in addition, there is siphon piece in the softener compartment.

Preparation

4.7.2 Detergent, softener and other cleaning agents

- Add detergent and softener before starting the washing programme.
- Never leave the detergent drawer open while the washing programme is running!
- When using a programme without prewash, do not put any detergent into the prewash compartment (compartment nr. "1").
- In a programme with prewash, do not put liquid detergent into the prewash compartment (compartment nr. "1").
- Do not select a programme with prewash if you are using a detergent bag or dispensing ball. Place the detergent bag or the dispensing ball directly among the laundry in the machine.
- If you are using liquid detergent, do not forget to place the liquid detergent cup into the main wash compartment (compartment nr. "2").
- Do not add any washing chemicals (liquid detergent, softener, etc.) when the machine is in drying step.

4.7.3 Choosing the detergent type

The type of detergent to be used depends on the type and colour of the fabric.

- Use different detergents for coloured and white laundry.
- Wash your delicate clothes only with special detergents (liquid detergent, wool shampoo, etc.) used solely for delicate clothes.
- When washing dark coloured clothes and quilts, it is recommended to use liquid detergent.
- Wash woolsens with special detergent made specifically for woolsens.

CAUTION



- Use only detergents manufactured specifically for washing machines.
- Do not use soap powder.

4.7.4 Adjusting detergent amount

The amount of washing detergent to be used depends on the amount of laundry, the degree of soiling and water hardness.

- Do not use amounts exceeding the dosage quantities recommended on the detergent package to avoid problems of excessive foam, poor rinsing, financial savings and finally, environmental protection.
- Use lesser detergent for small amounts or lightly soiled clothes.

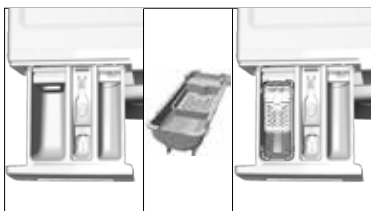
4.7.5 Using softeners

Pour the softener into the softener compartment of the detergent drawer.

- Do not exceed the (>max<) level marking in the softener compartment.
- If the softener has lost its fluidity, dilute it with water before putting it in the detergent drawer.

4.7.6 Using liquid detergents

4.7.6.1 If the product has a liquid detergent cup



- Place the liquid detergent cup in compartment nr. "2".
- If the liquid detergent has lost its fluidity, dilute it with water before putting in the detergent cup.

4.7.6.2 If the product does not have a liquid detergent cup

- Do not use liquid detergent for the prewash in a programme with prewash.
- Liquid detergent stains your clothes when used with Delayed Start function. If you are going to use the Delayed Start function, do not use liquid detergent.

4.7.7 Using gel and tablet detergent

- If the gel detergent thickness is fluidal and your machine does not contain a special liquid detergent cup, put the gel detergent into the main wash detergent compartment during first water intake. If your machine contains a liquid detergent cup, fill the detergent into this cup before starting the programme.
- If the gel detergent thickness is not fluidal or in the shape of capsule liquid tablet, put it directly into the drum before washing.
- Put tablet detergents into the main wash compartment (compartment nr. "2") or directly into the drum before washing.

Preparation

NOTE



- *Tablet detergents may leave residues in the detergent compartment. If you encounter such a case, place the tablet detergent between the laundry, close to the lower part of the drum in future washings.*
- *Use the tablet or gel detergent without selecting the prewash function.*

4.7.8 Using starch

- Add liquid starch, powder starch or the fabric dye into the softener compartment.
- Do not use softener and starch together in a washing cycle.
- Wipe the inside of the machine with a damp and clean cloth after using starch.

4.7.9 Using bleaches

- Select a programme with prewash and add the bleaching agent at the beginning of the prewash. Do not put detergent in the prewash compartment. As an alternative application, select a programme with extra rinse and add the bleaching agent through an empty compartment of the detergent drawer as soon as the first rinsing step appears on the display, and add 1 glass of water in the same compartment.
- Do not use bleaching agent and detergent by mixing them.
- Use just a little amount (approx. 50 ml) of bleaching agent and rinse the clothes very well as it causes skin irritation. Do not pour the bleaching agent onto the clothes and do not use it for coloured clothes.
- When using oxygen based bleaches, select a programme that washes at a lower temperature.
- Oxygen based bleaches can be used together with detergents; however, if its thickness is not the same with the detergent, put the detergent first into the compartment nr. "2" in the detergent drawer and wait until the detergent flows while the machine is taking in water. Add the bleaching agent from the same compartment while the machine is still taking in water.

4.7.10 Using limescale remover

- When required, use limescale removers manufactured specifically for washing machines only.

4.8 Tips for efficient washing

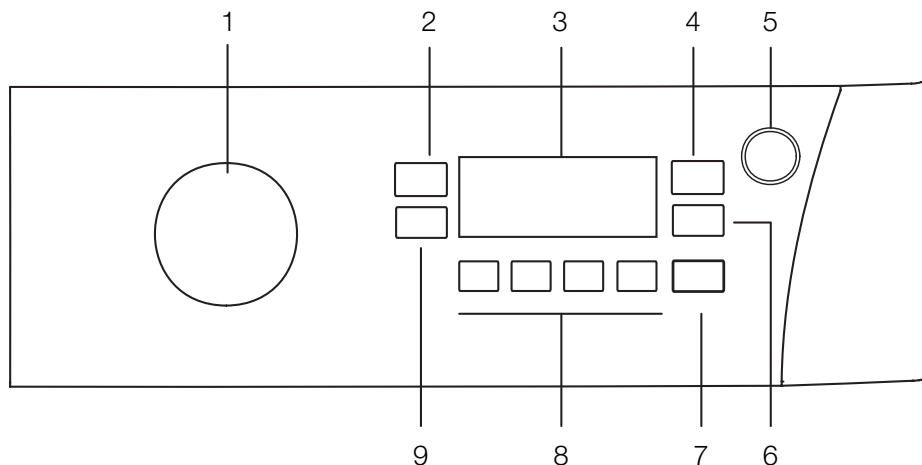
		Clothes			
		Light colours and whites	Colours	Dark colors	Delicates/Woolens/Silks
		(Recommended temperature range based on soiling level: 40-90 °C)	(Recommended temperature range based on soiling level: cold -40 °C)	(Recommended temperature range based on soiling level: cold -40 °C)	(Recommended temperature range based on soiling level: cold -30 °C)
Soiling Level	Heavily Soiled	It may be necessary to pre-treat the stains or perform prewash. Powder and liquid detergents recommended for whites can be used at dosages recommended for heavily soiled clothes. It is recommended to use powder detergents to clean clay and soil stains and the stains that are sensitive to bleaches.	Powder and liquid detergents recommended for colours can be used at dosages recommended for heavily soiled clothes. It is recommended to use powder detergents to clean clay and soil stains and the stains that are sensitive to bleaches. Use detergents without bleach.	Liquid detergents suitable for colours and dark colours can be used at dosages recommended for heavily soiled clothes.	Prefer liquid detergents produced for delicate clothes. Woolen and silk clothes must be washed with special woolen detergents.
	Normally Soiled	Powder and liquid detergents recommended for whites can be used at dosages recommended for normally soiled clothes.	Powder and liquid detergents recommended for colours can be used at dosages recommended for normally soiled clothes. Use detergents without bleach.	Liquid detergents suitable for colours and dark colours can be used at dosages recommended for normally soiled clothes.	Prefer liquid detergents produced for delicate clothes. Woolen and silk clothes must be washed with special woolen detergents.
	Lightly Soiled	Powder and liquid detergents recommended for whites can be used at dosages recommended for lightly soiled clothes.	Powder and liquid detergents recommended for colours can be used at dosages recommended for lightly soiled clothes. Use detergents without bleach.	Liquid detergents suitable for colours and dark colours can be used at dosages recommended for lightly soiled clothes.	Prefer liquid detergents produced for delicate clothes. Woolen and silk clothes must be washed with special woolen detergents.

Preparation

4.9 Tips for efficient drying

		Programs				
		Cottons Drying	Synthetics Drying	Babyprotect +	Wash&Dry	Wash&Wear
Cloth Types	Durable Cotton Blend Clothes	Bed sheets, duvet covers, baby clothes, t-shirts, sweatshirts, knitwear, blue jeans, canvas trousers, shirts, cotton socks, and alike	Not recommended!	Washes and dries directly! Bed sheets, duvet covers, baby clothes, t-shirts, sweatshirts, knitwear, blue jeans, canvas trousers, shirts, cotton socks, and alike	Washes and dries directly! Bed sheets, duvet covers, baby clothes, t-shirts, sweatshirts, knitwear, blue jeans, canvas trousers, shirts, cotton socks, and alike	Lightly soiled and unstained shirt, t-shirt, sweatshirt, etc. The amount of the laundry should be very little.
	Synthetics (Polyester, nylon etc.):	Not recommended!	Recommended for polyester, polyamide (nylon), polyacetate, acrylic blended clothes. Drying is not recommended for viscose blend clothes. Drying instructions found on the maintenance tag should be observed.	Considering the washing and drying warnings found on the maintenance tag, lower temperatures are recommended for polyester, polyamide (nylon), polyacetate, acrylic blended clothes.	Considering the washing and drying warnings found on the maintenance tag, lower temperatures are recommended for polyester, polyamide (nylon), polyacetate, acrylic blended clothes.	Synthetic blend clothes such as lightly soiled and unstained shirt, t-shirt etc. The amount of the laundry should be very little.
	Delicate (Silk, Woolen, Cashmire, Angora etc.) Clothes	Not recommended!	Not recommended!	Not recommended!	Not recommended!	Not recommended!
	Duvet, jacket, curtain, etc. voluminous laundry	Not recommended! Drying voluminous laundry in the machine is not appropriate. Dry them by hanging or spreading.	Not recommended! Drying voluminous laundry in the machine is not appropriate. Dry them by hanging or spreading.	Not recommended! Drying voluminous laundry in the machine is not appropriate. Dry them by hanging or spreading.	Not recommended! Drying voluminous laundry in the machine is not appropriate. Dry them by hanging or spreading.	Not recommended! Drying voluminous laundry in the machine is not appropriate. Dry them by hanging or spreading.

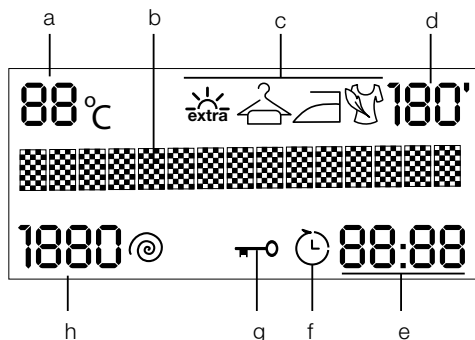
5.1 Control panel



- 1 - Programme Selection knob
- 2 - Temperature Adjustment button
- 3 - Display
- 4 - Drying Selection knob
- 5 - On / Off button

- 6 - End Time Adjustment button
- 7 - Start / Pause button
- 8 - Auxiliary Function buttons
- 9 - Spin Speed Adjustment button

5.2 Display symbols



- a. - Temperature indicator (°C)
- b - Information line
- c - Drying Levels indicator
- d - Drying Time indicator (minutes)
- e - Time indicator (hours:minutes)
- f - End Time indicator
- g - Lock indicator
- h - Spin Speed indicator (rpm)

Operating the product

5.3 Preparing the machine

1. Check if the hoses are connected tightly.
2. Plug in your machine.
3. Turn the tap on completely.
4. Place the laundry in the machine.
5. Add detergent and fabric softener.

5.4 Wash programme selection

1. Select the programme suitable for the type, quantity and soiling level of the laundry in accordance with the "Programme and consumption table" and the temperature table below.

90°C	Heavily soiled white cottons and linens. (coffee table covers, tablecloths, towels, bed sheets, etc.)
60°C	Normally soiled, coloured, fade proof linens, cottons or synthetic clothes (shirt, nightgown, pajamas, etc.) and lightly soiled white linens (underwear, etc.)
40°C- 30°C- Cold	Blended laundry including delicate textile (veil curtains, etc.), synthetics and woolsens.

2. Select the desired programme with the **Programme Selection** knob.

NOTE



- Programmes are limited with the highest spin speed appropriate for that particular type of fabric.
- When selecting a programme, always consider the type of fabric, colour, degree of soiling and permissible water temperature.
- Always select the lowest required temperature. Higher temperature means higher power consumption.

5.5 Washing programs

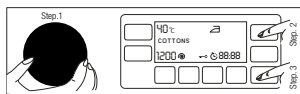
Depending on the type of fabric, use the following main programmes.

NOTE



- You can make drying directly after washing by pressing the Drying button after selecting the programme you want to wash your laundry with. The step in which the drying will be made will be displayed on the information line every time you press the button, and the related symbol lights. If you like, you can make drying for maximum allowed time by keeping on pressing the button.
- Figures and inscriptions included in the programme steps are schematic and may not match the product exactly.
- Name of the programme you have selected by the programme selection knob will appear on the display of the machine.
- If you do not want to have drying made after the programme you selected, press the Drying button until "Drying cancelled" is displayed.
- Load maximum 6kg laundry when you are going to make washing and drying by using the Drying function of the machine. If it is overloaded, the laundry will not dry and the machine will run for a longer time and consume extra power.

• Cottons



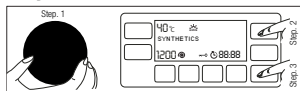
Use this programme for your cotton laundry (such as bed sheets, duvet and pillowcase sets, towels, bathrobes, underwear, etc.). Your laundry will be washed with vigorous washing action for a longer washing cycle.

NOTE



- You can dry your laundry immediately after washing them (Automatic or scheduled drying can be made after washing). For this, you have to select the drying function too before starting the washing programme.

• Synthetics



Use this programme to wash your synthetic clothes (shirts, blouses, synthetic/cotton blends, etc.). It washes with a gentle action and has a shorter washing cycle compared to the Cotton programme.

Operating the product

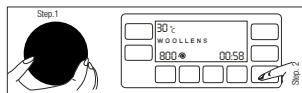
For curtains and tulle, use the Synthetic 40°C programme with prewash and anti-creasing functions selected. As their meshed texture causes excessive foaming, wash the veils/tulle by putting little amount of detergent into the main wash compartment. Do not put detergent in the prewash compartment.



NOTE

- You can dry your laundry immediately after washing them (Automatic or scheduled drying can be made after washing). For this, you have to select the drying function too before starting the washing programme.

• Woollens



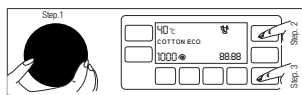
Use this programme to wash your woollen clothes. Select the appropriate temperature complying with the tags of your clothes. Use appropriate detergents for woollens.



NOTE

- Drying function cannot be selected in the washing programme for woollens.

• Cottons Eco



Use this programme to wash your normally soiled, durable cotton and linen laundry. Although it washes longer than all other programmes, it provides high energy and water savings. Actual water temperature may be different from the stated wash temperature. When you load the machine with less laundry (e.g. ½ capacity or less), programme time may automatically get shorter. In this case, energy and water consumption will decrease more, providing a more economic wash. This programme is available in the models with the remaining time indicator.



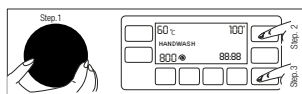
NOTE

- You can dry your laundry immediately after washing them (Automatic or scheduled drying can be made after washing). For this, you have to select the drying function too before starting the washing programme.

• Delicate

Use this programme to wash your delicate clothes. It washes with a gentler action compared to the Synthetics programme.

• Hand Wash



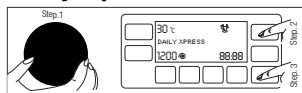
Use this programme to wash your woollen/delicate clothes that bear "not machine-washable" tags and for which hand wash is recommended. It washes laundry with a very gentle washing action to not to damage clothes.



NOTE

- You can dry your laundry immediately after washing them (Automatic or scheduled drying can be made after washing). For this, you have to select the drying function too before starting the washing programme.

• Daily express



Use this programme to wash your lightly soiled and unspotted cotton laundry in a short time.

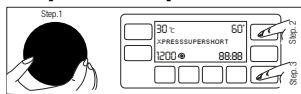
Operating the product



NOTE

- You can dry your laundry immediately after washing them (Automatic or scheduled drying can be made after washing). For this, you have to select the drying function too before starting the washing programme.

• Super short express



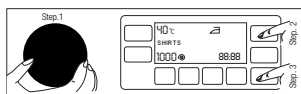
Use this programme to wash your small amounts of lightly soiled cotton laundry in a short time. It washes your laundry in 14 minutes.



NOTE

- You can dry your laundry immediately after washing them (Automatic or scheduled drying can be made after washing). For this, you have to select the drying function too before starting the washing programme.
- When drying function is selected, additional drying time will be displayed at the end of washing.

• Shirts



Use this programme to wash the cotton, synthetic and synthetic blended shirts together.



NOTE

- You can dry your laundry immediately after washing them (Automatic or scheduled drying can be made after washing). For this, you have to select the drying function too before starting the washing programme.

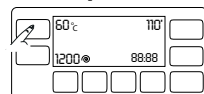
• Rinse

Use this programme when you want to rinse or starch separately.

• Spin+Drain

Use this programme to drain the water in the machine.

5.6 Temperature selection



Whenever a new programme is selected, the recommended temperature for the programme appears on the temperature indicator. It is possible that the recommended temperature value is not the maximum temperature that can be selected for the current programme.

Press the **Temperature Adjustment** button to change the temperature. Temperature will decrease by steps of 10 °C.



NOTE

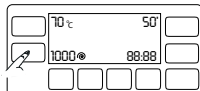
- Temperature Adjustment button works backwards only. For example, if you wish to select 60°C when 40°C is displayed on the screen, you need to press the button in a row to go back from 40°C until you reach 60°C.
- The light of temperature indicator is off in the programmes that do not allow temperature adjustment.
- If you scroll to cold wash option and press Temperature Adjustment button again, the recommended maximum temperature for the selected programme appears on the display. Press the Temperature Adjustment button again to decrease the temperature.

Finally, "-" symbol indicating the cold option appears on the display. "Cold Wash" appears on the display.

You can also change the temperature after the washing starts. If the Temperature indicator's light is on after the wash cycle has started, you can select the desired temperature. If the wash cycle has reached a point where you cannot change the temperature, the light of temperature indicator goes off.

Operating the product

5.7 Selecting the spin speed



Whenever a new programme is selected, the recommended spin speed for the selected programme is displayed on the **Spin Speed** indicator.



NOTE

- It is possible that the recommended spin speed value is not the maximum spin speed that can be selected for the current programme.

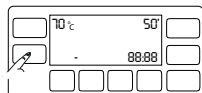
Press the **Spin Speed Adjustment** button to change the spin speed. Spin speed decreases gradually. Then, depending on the model of the product, "Rinse Hold" and "No Spin" options appear on the display.



NOTE

- Spin Speed Adjustment button works backwards only. For example, if you wish to select 1000 rpm when 800 rpm is displayed on the screen, you need to press the button in a row to go back from 800 rpm until you reach 1000 rpm.
- Rinse Hold option is indicated with "I" symbol and No Spin option is indicated with "—" symbol.

5.7.1 If you want to spin your laundry after the Rinse Hold function:



- Adjust the **Spin Speed**.

- Press **Start / Pause / Cancel** button. Program resumes. Machine discharges the water and spins the laundry.

If you want to discharge the water at the end of the programme without spinning, use **No Spin** function.



NOTE

- Light of the Spin Speed indicator is off in the programmes that do not allow the adjustment of spin speed. When you press the Spin Speed Adjustment button, "Not adjustable" appears on the display.

You can also change the Spin Speed after the washing starts. If the Spin Speed indicator's light is on after the wash cycle has started, you can select the desired spin speed. If the wash cycle has reached a point where you cannot change the spin speed, the light of spin speed indicator goes off.

5.8 Drying Programmes



CAUTION

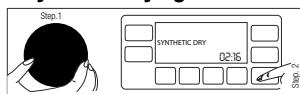
- Piles coming from the clothes during drying are automatically cleaned by the machine. Water is automatically taken in to perform cleaning. For this reason, water tap of the machine should also be open during drying programmes.



NOTE

- Spinning step already exists in the drying programmes. Your machine carries out this process to shorten the drying time. When drying is selected, spin speed setting is in the 1200 - Maximum rpm range.

• Synthetic Drying



Use this programme to dry humid or damp synthetic clothes whose dry weight corresponds to 4 kg. This programme performs drying only.



NOTE

- For dry weights of laundry, see Section 4, Step 4.5

• Cotton Drying

Use this programme to dry humid or damp cotton clothes whose dry weight corresponds to 6 kg. This programme performs drying only.

Operating the product



NOTE

- Load 4.5kg of laundry to dry the towels and bathrobes only.
- For dry weights of laundry, see Section 4, Step 4.5

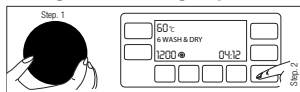
5.9 Washing and Drying Programmes



CAUTION

- Piles coming from the clothes during drying are automatically cleaned by the machine. Water is automatically taken in to perform cleaning. For this reason, water tap of the machine should also be open during drying programmes.

• 6 kg Wash & 6kg Dry

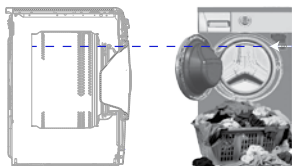


Use this programme to wash cotton clothes up to 6 kg and dry them immediately afterwards without making any selection.



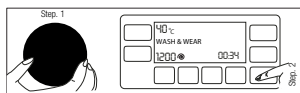
NOTE

- Auxiliary additional drying function cannot be selected when this programme is selected.



For the 6Kg Wash & 6kg Dry cycle, we advise you to load the laundry to the appliance up to the level specified in the figure above (level arrow is shown with the door of the product open) for ideal drying conditions.

• Wash&Wear



Use this programme to wash and dry 0.5 kg of laundry (2 shirts) in 35 minutes. Maximum amount of laundry that can be washed with this programme is 1 kg (5 shirts).



NOTE

- Use this programme to quickly wash and dry daily clothes worn for a short time and taken off recently. It is suitable for fine-textured, quickly drying laundry: (Shirt, T-Shirt)
- Other drying options or programmes should be used for coarse-textured and slowly drying clothes.

• Anti Allergy+

Up to 2 kg, use this programme to wash and immediately dry your laundry for which you require anti-allergic and hygienic results (baby clothes, bed linens, duvet cover, underwear, etc.).



NOTE

- Babyprotect+ Wash & Dry 60°C programme is tested and approved by "The British Allergy Foundation" (Allergy UK) in United Kingdom.

Operating the product

5.10 Programme and consumption table

(For washing)

EN						Auxiliary functions								
Programme (°C)		Max. Load (kg)	Water Consumption (l)	Energy Consumption (kWh)	Max. Speed***	Prewash	Quick Wash	Rinse Plus	Anti-Creasing	Rinse Hold	Drying	Pet hair removal	Selectable temperature range °C	
Cottons	90	10.5	95	2.55	1600	●	●	●	●	●	●	●	90-Cold	
Cottons	60	10.5	95	2.05	1600	●	●	●	●	●	●	●	90-Cold	
Cottons	40	10.5	95	1.35	1600	●	●	●	●	●	●	●	90-Cold	
Cotton Economic	60	10.5	53	1.03	1600						●		60-Cold	
Cotton Economic	40	10.5	53	0.80	1600						●		60-Cold	
Synthetics	60	5	65	1.20	1200	●	●	●	●	●	●	●	60-Cold	
Synthetics	40	5	65	0.65	1200	●	●	●	●	●	●	●	60-Cold	
Woolens	40	2	45	0.30	1200			●		●			40-Cold	
Delicate	40	5	50	0.40	1000	●							40-Cold	
Hand wash	30	1.5	40	0.21	1200								30-Cold	
Super short express	30	2	35	0.10	1400			●		●	●		30-Cold	
Daily express	90	10.5	60	2.00	1400			●		●	●		90-Cold	
Daily express	60	10.5	60	1.15	1400			●		●	●		90-Cold	
Daily express	30	10.5	50	0.15	1400			●		●	●		90-Cold	
Shirts	60	5	70	1.40	800	●	●	●	*	●	●	●	60-Cold	

• : Selectable.

* : Automatically selected, not cancellable.

***: If maximum spin speed of the machine is lower then this value, you can only select up to the maximum spin speed.

****: Programme detects the type and quantity of the laundry to automatically adjust water and energy consumption and programme time.

- : See the programme description for maximum load.

Operating the product

Program and consumption table (For drying)

EN						Auxiliary functions						Drying level						Selectable temperature range °C
Programme (°C)		Max. Load (kg)	Water Consumption (l)	Energy Consumption (kWh)	Max. Speed***	Prewash	Quick Wash	Rinse Plus	Anti-Creasing	Rinse Hold	Pet hair removal	Drying	Extra wardrobe dry	Wardrobe dry	Iron dry	Delicate drying	Time based drying - minutes	
Cottons Drying	-	6	4	2.7	1600							*	•	•	•	•		-
Synthetics Drying	-	4	4	2.45	-							*		•	•	•	•	-
Anti Allergy+	60	2	84	2.9	1600			*				*	•	•	•		•	90-30
6Kg Wash&6Kg Dry	60	6	64	5.3	1600							*	•	•	•		•	60-Cold
Wash&Wear	30	0.5	28	0.6	1000			•				*					•	30-Cold
Wash&Wear	30	1	28	1	1000			•				*					•	30-Cold

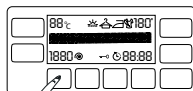
NOTE



- ***: If maximum spin speed of the machine is lower then this value, you can only select up to the maximum spin speed.
- The auxiliary functions in the table may vary according to the model of your machine.
- Water and power consumption may vary subject to the changes in water pressure, water hardness and temperature, ambient temperature, type and amount of laundry, selection of auxiliary functions and spin speed, and changes in electric voltage.
- You can see the washing time of the programme you have selected on the display of the machine. It is normal that small differences may occur between the time shown on the display and the real washing time.

Operating the product

5.11 Auxiliary function selection



Select the required auxiliary functions before starting the program. Whenever a programme is selected, frames of the auxiliary function symbols that can be selected together with it illuminate. And when you select an auxiliary function, the interior area of the auxiliary function symbol also starts to illuminate and the name of the selected function appears on display for "3" seconds.

NOTE



- *Frame of the auxiliary function symbol that cannot be selected with the current programme will not illuminate. When you press the button of such auxiliary functions, "Not adjustable" appears on the display for ... seconds.*

Also the frames of the auxiliary function suitable for the current programme after the washing has started remains illuminated. You can select or cancel the auxiliary functions whose frames are illuminated. If the wash cycle has reached a point where you cannot select the auxiliary function, the function's frame goes off.

NOTE



- *Some functions cannot be selected together. If a second auxiliary function conflicting with the first one is selected before starting the machine, the function selected first will be cancelled and the second auxiliary function selection will remain active. For example, if you want to select Quick Wash after you have selected the Prewash, Prewash will be cancelled and Quick Wash will remain active.*
- *Auxiliary function that is not compatible with the program cannot be selected. (See "Programme and consumption table")*
- *Some programmes have auxiliary functions that must be operated simultaneously. Those functions cannot be cancelled. The frame of the auxiliary function will not be illuminated, only inner area will be illuminated.*
- *The machine will extend the duration of the programme automatically unless the required dampness level (ironing, closet, extra closet and delicate) is reached at the end of the drying. Program will last longer.*
- *If time based drying is selected, the programme will be ended even if the laundry is still wet at the end of the programme.*
- *The machine will shorten the duration of the programme if the required dampness level (ironing, closet, extra closet and delicate) is reached during the drying operations or in time based drying selections. A time decrease will be seen on the display.*

• Prewash

A Prewash is only worthwhile for heavily soiled laundry. Not using the Prewash will save energy, water, detergent and time.

• Quick Wash

This function can be used in Cottons and Synthetics programmes. It decreases the washing times for lightly soiled laundries and also the number of rinsing steps.

NOTE



- *When you select this function, load your machine with half of the maximum laundry specified in the programme table.*

• Extra Rinse

This function enables you to wash and rinse your laundry with plenty of water in Cottons, Synthetics, Lingerie, and Woollens programmes. Use this function for delicate laundries that crease easily.

• Anti-creasing

This function creases the clothes lesser when they are being washed. Drum movement is reduced and spin speed is limited to prevent creasing. In addition, washing is done with a higher water level.

Operating the product

• Drying

This function provides drying of laundry after washing. Check from the programme table in which programmes this auxiliary function is selectable.

5.12 Drying Steps

5.12.1 Iron Dry

Drying is carried on until dryness level reaches Iron Dry step.

5.12.2 Wardrobe dry

Drying is carried on until dryness level reaches Wardrobe Dry step.

5.12.3 Extra wardrobe dry

Drying is carried on until dryness level reaches Extra Wardrobe Dry step.

5.12.4 Delicate drying

Use this programme to dry 100% synthetic and synthetic blend sateen type underwear (nightwear, upper underwear, lower underwear, pajamas) which are dryable as per washing instructions.

NOTE



- Dryness level may change due to the blend, weave/knit type, amount and dampness level of the laundry.
- Products that contain accessories such as lace, tulle, stone, bead, spangle, wire and products with high content of silk should not be dried in the machine.
- Silk blend clothes containing cotton or have a sateen appearance may remain damp when dried in this programme.

5.12.5 Time-based drying

You may select either of 10', 20', 30', 60', 90', 120' and 150' drying times to reach the final drying degree at low temperature.

NOTE



- For drying laundry up to two pieces, you should prefer timed drying steps in the cotton or synthetic drying programmes to be selected according to the type of the laundry.
- When you select 10' drying function, only Aeration and Cooling is performed.
- If the laundry is not dry as required after the drying programmes, you should prefer timed drying steps in the cotton or synthetic drying programmes to be selected according to the type of the laundry.
- When this function is selected, machine performs drying up to the set time independent of the drying degree.

5.13 Time display

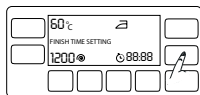
Remaining time for the completion of the programme while it is running is displayed as "01:30" in hours and minutes format.

NOTE



- Programme time may differ from the values in the "Programme and consumption table" depending on the water pressure, water hardness and temperature, ambient temperature, amount and the type of laundry, auxiliary functions selected and the changes at the mains voltage.

5.14 End Time



With the **End Time** function, the startup of the programme may be delayed up to 24 hours. After pressing **End Time** button, the displayed time is the programme's estimated end time. If the **End Time** is adjusted, **End Time** indicator is illuminated. "**End Time Setting**" appears on the display. Meantime, **Start / Pause** button flashes.

In order for the End Time function is activated and the programme is completed at the end of the specified time, you must press **Start / Pause** button after adjusting the time. "**Finish Time On**" appears on the display when you press the button. **Start / Pause** button stops flashing and remains illuminated continuously.

If you want to cancel End Time function, press **End Time** button until the End Time indicator turns off or press **On / Off** button to turn off and on the machine.

1. Open the loading door, place the laundry and put detergent, etc.
2. Select the washing programme, temperature, spin speed and, if required, the auxiliary functions.
3. Set the end time of your choice by pressing the **End Time** button. **End Time** indicator illuminates.
4. Press **Start / Pause** button. Time countdown starts. ":" sign in the middle of the end time on the display starts flashing.

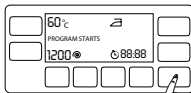
Operating the product

NOTE



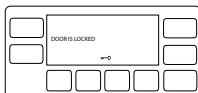
- Do not use liquid detergents when you activate End Time function! There is the risk of staining of the clothes.
- Loading door remains locked during the End Time countdown period. Machine must be switched to Pause mode by pressing the Start/Pause button to open the loading door. At the end of the countdown, End Time indicator turns off, washing cycle starts and the time of the selected programme appears on the display.
- When the End Time selection is completed, the time appearing on the screen consists of end time plus the duration of the selected programme.

5.15 Starting the programme



1. Press **Start / Pause** button to start the programme.
2. The **Start / Pause** button which was flashing starts to illuminate steadily now, indicating that the programme has started. "Program started" appears on the display for "3" seconds.
3. Loading door is locked. "Door is Closing" appears on the display when the door is being locked.

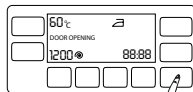
5.16 Loading door lock



There is a locking system on the loading door of the machine that prevents opening of the door in cases when the water level is unsuitable. "Door is Locked" appears on the display when the loading door is locked.

5.17 Changing the selections after programme has started

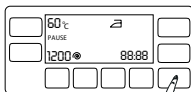
5.17.1 Adding laundry after the programme has started:



If the water level in the machine is suitable when you press **Start / Pause** button, "Door is opening" will appear on the display.

If the water level in the machine is not suitable when you press **Start / Pause** button, the display will show that the loading door is locked.

5.17.2 Switching the machine to pause mode:



Press the **Start / Pause** button to switch the machine to pause mode. The frame around the **Start / Pause** button starts flashing. "Pause" appears on the display.

5.17.3 Changing the programme selection after programme has started:

The programme change is not allowed when the current programme is running.

If you turn the **Programme Selection** knob while the programme is running, "Pause to make changes" appears on the display.

You can select the new programme after switching the current programme to pause.

NOTE



- The selected program starts anew.

5.17.4 Changing the auxiliary function, speed and temperature settings

Depending on the step the programme has reached, you can cancel or activate the auxiliary functions; see, "Auxiliary function selection".

You can also change the speed, temperature and drying settings; see, "Spin speed selection" and "Temperature selection".

Operating the product



NOTE

- The loading door will not open if the water temperature in the machine is high or the water level is above the door opening.

5.18 Child Lock

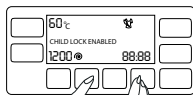
Use Child Lock function to prevent children from tampering with the machine. Thus you can avoid any changes in a running programme.



NOTE

- You can switch on and off the machine with On / Off button when the Child Lock is active. When you switch on the machine again, programme will resume from where it has stopped.
- If you press any button when the Child Lock is activated, the machine will give an audible warning. Audible warning will be cancelled when the buttons are pressed 5 times in a row. The warning phrase on the screen goes on to be displayed.

5.18.1 To activate the Child Lock:



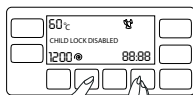
Press and hold 2nd and 4th Auxiliary Function buttons for 3 seconds. After the countdown as "Child Lock 3-2-1" on the display is over, "Child Lock Enabled" appears on the display. You can release **2nd and 4th Auxiliary Function** buttons when this warning is displayed.



NOTE

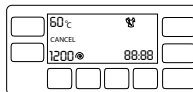
- "Child Lock Enabled" appears on the display if you press any button when Child Lock is enabled.

5.18.2 To deactivate the Child Lock:



Press and hold 2nd and 4th Auxiliary Function buttons for 3 seconds. After the countdown as "Child Lock 3-2-1" on the display is over, "Child Lock Disabled" appears on the display.

5.19 Cancelling the programme



The programme is cancelled when the machine is turned off and on again. Press and hold **On / Off** button for 3 seconds. After the countdown as "Cancel 3-2-1" on the display is over, the machine turns off.

NOTE



- If you press On / Off button when the Child Lock is enabled, the programme will not be cancelled. You should cancel the Child Lock first. Countdown as "Pause 3-2-1" appears on the display.
- If you have to open the loading door after you have cancelled the programme, but it is not possible to open the loading door since the water level in the machine is above the loading door level, then turn the Programme Selection knob to Pump+Spin programme and discharge the water in the machine.

5.20 End of programme

"Laundry can be taken out" appears on the display when the programme is completed.

If you do not press any button for 2 minutes, the machine will switch to pause mode. Display and all indicators are turned off. Only the frame of the **Programme Selection** knob remains flashing.

If you press any button or turn the **Programme Selection** knob when the machine is in pause mode, programme steps that are completed will appear on the display.

Operating the product

5.21 Entering the Settings menu

You can perform the following operations in Settings menu:

- Changing the language selection,
- Changing the screen brightness setting,
- Turning on and off the volume,

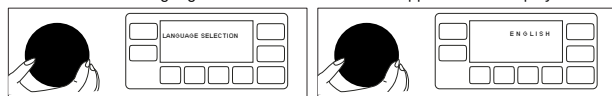
Press **Temperature Adjustment** button and **Spin Speed Adjustment** button simultaneously for 3 seconds to enter the Settings menu. "Select Language" menu appears on the display.

Use **Temperature** or **Drying Adjustment** buttons to navigate in menus.

5.21.1 Changing the language selection



1. Press **Temperature Adjustment** button and **Spin Speed Adjustment** button simultaneously for 3 seconds to enter the Settings menu. "Select Language" menu is the first menu to appear on the display.

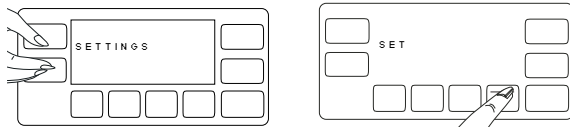


2. Turn the **Programme Selection** knob until the desired language appears on the display in Select Language menu.



3. Press the light button on the lower right corner of the display when the desired language is displayed. Light goes off and "Set" appears on the display.

5.21.2 Changing the screen brightness setting



1. Press **Temperature Adjustment** button and **Spin Speed Adjustment** button simultaneously for 3 seconds to enter the Settings menu. Using the **Drying** button, open "Brightness" menu.
2. Turn the **Programme Selection** knob until the desired brightness option appears on the display in Brightness menu.
3. Press the light button on the lower right corner of the display when the desired brightness is displayed. Light goes off and "Set" appears on the display.

5.21.3 Turning on and off the Audio Warning



1. Press **Temperature Adjustment** button and **Spin Speed Adjustment** button simultaneously for 3 seconds to enter the Settings menu. Using the **Drying** button, open "Volume Setting" menu.
2. Turn the **Programme Selection** knob until the desired volume option appears on the display in Volume Setting menu.



Operating the product

3. If you want to turn up the volume, press the light button on the lower right corner of the display when "VOLUME ON" is selected. Light goes off and "Set" appears on the display.
4. If you want to turn down the volume, press the light button on the lower right corner of the display when "VOLUME OFF" is selected. Light goes off and "Off" appears on the display.

5.22 Memory (Favourite) programme setting

You can create a favourite programme by saving frequently used programme and other settings. Use this function when you want to select quickly the same settings you use for the laundry that you wash regularly.

Favourite programme will remain at the factory set programme until you make a new favourite programme setting.

5.22.1 To store a new favourite programme:

1. Select the desired programme, temperature, spin speed, soiling degree and auxiliary function.
2. Keep the **Favourite** button pressed for 3 seconds.
3. Countdown as "Storing favourite 3-2-1" appears on the display.



NOTE

➤ If storing is not successful, "Favourite not saved" appears on the display.

5.22.2 To select a favourite programme:

1. Press **Favourite** button. "Favourite selected" appears on the display.
2. Programme and other settings saved as favourite appear on the display.
3. Press **Start / Pause** button to start your Favourite programme.

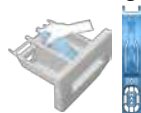
5.23 Your machine is equipped with a "Standby Mode"

In case of not starting any programme or waiting without making any other operation when the machine is turned on by On/Off button and while it is in selection step or if no other operation is performed approximately 2 minutes after the programme you selected has come to an end, your machine will automatically switch to energy saving mode. Brightness of indicator lights will decrease. Also, if your product is equipped with a display showing the programme duration, this display will completely turn off. In case of rotating the Programme Selection knob or pressing any button, lights and display will restore to their previous condition. Your selections made while exiting the energy saving mode may change. Check the appropriateness of your selections before starting the programme. Readjust if necessary. This is not a fault.

6 Maintenance and cleaning

Service life of the product extends and frequently faced problems decrease if cleaned at regular intervals.

6.1 Cleaning the detergent drawer



Clean the detergent drawer at regular intervals (every 4-5 washing cycles) as shown below in order to prevent accumulation of powder detergent in time.

- 1 Lift the rear part of the siphon to remove it as illustrated. After performing the cleaning procedures explained below, replace the siphon back to its seating and push its front section downwards to be sure that the locking tab engages.



NOTE

- If more than normal amount of water and softener mixture starts to gather in the softener compartment, clean the siphon.

- 2 Wash the detergent drawer and the siphon with plenty of lukewarm water in a washbasin. Wear protective gloves or use an appropriate brush to avoid touching of the residues in the drawer with your skin when cleaning.
- 3 After cleaning, seat the siphon well in its place and insert the drawer back.

6.2 Cleaning the loading door and the drum

Residues of softener, detergent and dirt may accumulate in your machine in time and may cause unpleasant odours and washing complaints. To avoid this, use the **Drum Cleaning** programme. If your machine is not featured with **Drum Cleaning** programme, use **Cottons-90** programme and select **Additional Water** or **Extra Rinse** auxiliary functions as well. Run the programme without any laundry in the machine. Before starting the programme, put a tea glass of (max. 100 g) of powder anti-limescale into the main wash detergent compartment (compartment nr. "2"). If the anti-limescale is in tablet form, put only one tablet into compartment nr. 2. Dry the inside of the bellow with a clean piece of cloth after the programme has come to an end.



NOTE

- Repeat Drum Cleaning process in every 2 months.
- Use an anti-limescale suitable for the washing machines.



After every washing check that no foreign substance is left in the drum.

If the holes on the bellow shown in the figure is blocked, open the holes using a toothpick.



NOTE

- Foreign metal substances will cause rust stains in the drum. Clean the stains on the drum surface by using cleaning agents for stainless steel. Never use steel wool or wire wool.



CAUTION

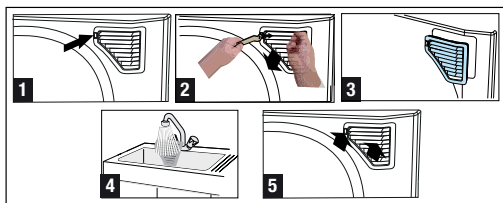
- Never use sponge or scrub materials. These will damage the painted and plastic surfaces.

Maintenance and cleaning

6.3 Cleaning the air suction filter

To clean the air suction filter:

Unplug the machine.



- 1 Attach the rear of the tool supplied in the Operation Manual bag to the place on the filter cap illustrated in Fig. 1.
- 2 Pull the filter cap towards yourself with the help of a finger after pulling the latch leftwise with the back side of the apparatus as illustrated in Fig. 2.
- 3 Filter cap will come out easily.
- 4 Wash the filter cap.
- 5 Replace the filter cap and make sure that it seats well. If not seated twist the latch to the right with the help of the apparatus.

CAUTION



- Never use sponge or scrub materials. These will damage the painted and plastic surfaces.
- After every 50 washing and drying operation (approx. 3 months), clean the air suction filter of the machine.
- If the machine is operated only for drying for 10 times in a row, always perform an empty washing afterwards by using 1 short programme.

6.4 Cleaning the body and control panel

Wipe the body of the machine with soapy water or non-corrosive mild gel detergents as necessary, and dry with a soft cloth.

Use only a soft and damp cloth to clean the control panel.

6.5 Cleaning the water intake filters



There is a filter at the end of each water intake valve at the rear of the machine and also at the end of each water intake hose where they are connected to the tap. These filters prevent foreign substances and dirt in the water to enter the washing machine. Filters should be cleaned as they get dirty.

- 1 Close the taps.
- 2 Remove the nuts of the water intake hoses to access the filters on the water intake valves. Clean them with an appropriate brush. If the filters are too dirty, take them out by means of pliers and clean them.
- 3 Take out the filters on the flat ends of the water intake hoses together with the gaskets and clean thoroughly under running water.
- 4 Replace the gaskets and filters carefully in their places and tighten the hose nuts by hand.

6.6 Draining remaining water and cleaning the pump filter

The filter system in your machine prevents solid items such as buttons, coins and fabric fibers clogging the pump impeller during discharge of washing water. Thus, the water will be discharged without any problem and the service life of the pump will extend.

If the machine fails to drain water, the pump filter is clogged. Filter must be cleaned whenever it is clogged or in every 3 months. Water must be drained off first to clean the pump filter.

In addition, prior to transporting the machine (e.g., when moving to another house) and in case of freezing of the water, water may have to be drained completely.

CAUTION



- Foreign substances left in the pump filter may damage the machine or may cause noise problem.
- If the product is not in use, turn the tap off, detach the supply hose and drain the water inside the machine against any freezing possibility in the region of installation.
- After each use close the supply hose tap of the product.

6.6.1 In order to clean the dirty filter and discharge the water:

1. Unplug the machine to cut off the supply power.

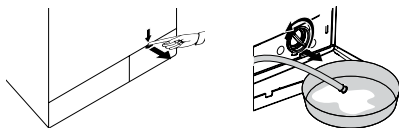
Maintenance and cleaning



CAUTION

- Temperature of the water inside the machine may rise up to 90 °C. To avoid burning risk, cleaned the filter after the water in the machine cools down.

- 2 Open the filter cap.
Press the tab on the filter cap downwards and pull the piece out towards yourself.



6.6.2 To discharge the water:

- Pull the emergency draining hose out from its seat
- Place a large container at the end of the hose. Drain the water into the container by pulling out the plug at the end of the hose. When the container is full, block the inlet of the hose by replacing the plug. After the container is emptied, repeat the above procedure to drain the water in the machine completely.
- When draining of water is finished, close the end by the plug again and fix the hose in its place.
- Turn the pump filter to take it out.

7 Troubleshooting

Programme cannot be started or selected.

- Machine has switched to self protection mode due to a supply problem (line voltage, water pressure, etc.). >>> *Press and hold Start / Pause / Cancel button for 3 seconds to reset the machine to factory settings. (See "Cancelling the programme")*

Water in the machine.

- Some water might have remained in the product due to the quality control processes in the production. >>> *This is not a failure; water is not harmful to the machine.*

There is water leaking from the bottom of the machine.

- Likely problems with hoses or the pump filter. >>> *Be sure the seals of the water inlet hoses are securely fitted. Attach the hose to the tap tightly.*
- Pump filter might not be closed fully. >>> *Check if the pump filter is completely closed.*

Machine does not fill with water.

- Tap is turned off. >>> *Open the taps.*
- Water inlet hose is bent. >>> *Correct the hose.*
- Water inlet filter is clogged. >>> *Clean the filter.*
- The loading door is ajar. >>> *Close the Loading Door.*

Machine does not drain water.

- Water drain hose might be clogged or twisted. >>> *Clean or flatten the hose.*
- Pump filter is clogged. >>> *Clean the pump filter.*

Machine vibrates or makes noise.

- Machine might be standing unbalanced. >>> *Adjust the feet to level the machine.*
- A hard substance might have entered into the pump filter. >>> *Clean the pump filter.*
- Transportation safety bolts are not removed. >>> *Remove the transportation safety bolts.*
- Laundry quantity in the machine might be too little. >>> *Add more laundry to the machine.*
- Machine might be overloaded with laundry. >>> *Take out some of the laundry from the machine or distribute the load by hand to balance it homogenously in the machine.*
- Machine might be leaning on a rigid item. >>> *Check if the machine is not leaning on anything.*

Machine stopped shortly after the programme started.

- Machine might have stopped temporarily due to low voltage. >>> *It will resume running when the voltage restores to the normal level.*

Machine directly discharges the water it takes in.

- Draining hose might not be at adequate height. >>> *Connect the water draining hose as described in the operation manual.*

No water can be seen in the machine during washing.

- The water level is not visible from outside of the washing machine. This is not a failure.

Loading door cannot be opened.

- Door lock is activated because of the water level in the machine. >>> *Drain the water by running the Pump or Spin programme.*
- Machine is heating up the water or it is at the spinning cycle. >>> *Wait until the programme completes.*
- Child lock is engaged. Door lock will be deactivated a couple of minutes after the programme has come to an end. >>> *Wait for a couple of minutes for deactivation of the door lock.*

Washing takes longer than the specified in the manual.(*)

- Water pressure is low. >>> *Machine waits until taking in adequate amount of water to prevent poor washing quality due to the decreased amount of water. Therefore, the washing time extends.*
- Voltage might be low. >>> *Washing time is prolonged to avoid poor washing results when the supply voltage is low.*
- Input temperature of water might be low. >>> *Required time to heat up the water extends in cold seasons. Also, washing time can be lengthened to avoid poor washing results.*
- Number of rinses and/or amount of rinse water might have increased. >>> *Machine increases the amount of rinse water when good rinsing is needed and adds an extra rinsing step if necessary.*
- Excessive foam might have occurred and automatic foam absorption system might have been activated due to too much detergent usage. >>> *Use recommended amount of detergent.*

Troubleshooting

Programme time does not countdown. (On models with display) (*)

- Timer may stop during water intake. >>> *Timer indicator will not countdown until the machine takes in adequate amount of water. The machine will wait until there is sufficient amount of water to avoid poor washing results due to lack of water. Timer indicator will resume countdown after this.*
- Timer may stop during heating step. >>> *Timer indicator will not countdown until the machine reaches the selected temperature.*
- Timer may stop during spinning step. >>> *Automatic unbalanced load detection system might be activated due to the unbalanced distribution of the laundry in the drum.*

Programme time does not countdown. (*)

- There might be an imbalance of laundry in the machine. >>> *Automatic unbalanced load detection system might be activated due to the unbalanced distribution of the laundry in the drum.*

Machine does not switch to spinning step. (*)

- There might be an imbalance of laundry in the machine. >>> *Automatic unbalanced load detection system might be activated due to the unbalanced distribution of the laundry in the drum.*
- The machine will not spin if water is not drained completely. >>> *Check the filter and the draining hose.*
- Excessive foam might have occurred and automatic foam absorption system might have been activated due to too much detergent usage. >>> *Use recommended amount of detergent.*

Washing performance is poor: Laundry turns gray. (**)

- Insufficient amount of detergent was used over a long period of time. >>> *Use the recommended amount of detergent appropriate for water hardness and the laundry.*
- Washing was made at low temperatures for a long time over a long period of time. >>> *Select the proper temperature for the laundry to be washed.*
- Insufficient amount of detergent is used with hard waters. >>> *Using insufficient amount of detergent with hard water causes the soil to stick on the cloth and this turns the cloth into gray in time. It is difficult to eliminate graying once it happens. Use the recommended amount of detergent appropriate for water hardness and the laundry.*
- Too much detergent is used. >>> *Use the recommended amount of detergent appropriate for water hardness and the laundry.*

Washing performance is poor: Stains persist or the laundry is not whitened. (**)

- Insufficient amount of detergent is used. >>> *Use recommended amount of detergent appropriate for the laundry.*
- Excessive laundry was loaded in. >>> *Do not load the machine in excess. Load with amounts recommended in the "Programme and consumption table".*
- Wrong programme and temperature were selected. >>> *Select the proper programme and temperature for the laundry to be washed.*
- Wrong type of detergent is used. >>> *Use original detergent appropriate for the machine.*
- Detergent is put in the wrong compartment. >>> *Put the detergent in the correct compartment. Do not mix the bleaching agent and the detergent with each other.*

Washing performance is poor: Oily stains appeared on the laundry. (**)

- Regular drum cleaning is not applied. >>> *Clean the drum regularly. For this, please see 6.2.*

Washing performance is poor: Clothes smell unpleasantly. (**)

- Odours and bacteria layers are formed on the drum as a result of continuous washing at lower temperatures and/or in short programmes. >>> *Leave the detergent drawer as well as the loading door of the machine ajar after each washing. Thus, a humid environment favorable for bacteria cannot occur in the machine.*

Colour of the clothes faded. (**)

- Excessive laundry was loaded in. >>> *Do not load the machine in excess.*
- Detergent in use is damp. >>> *Keep detergents closed in an environment free of humidity and do not expose them to excessive temperatures.*
- A higher temperature is selected. >>> *Select the proper programme and temperature according to the type and soiling degree of the laundry.*

Troubleshooting

It does not rinse well.

- The amount, brand and storage conditions of the detergent used are inappropriate. >>> *Use a detergent appropriate for the washing machine and your laundry. Keep detergents closed in an environment free of humidity and do not expose them to excessive temperatures.*
- Detergent is put in the wrong compartment. >>> *If detergent is put in the prewash compartment although prewash cycle is not selected, machine can take this detergent during rinsing or softener step. Put the detergent in the correct compartment.*
- Pump filter is clogged. >>> *Check the filter.*
- Drain hose is folded. >>> *Check the drain hose.*

Laundry became stiff after washing. (**)

- Insufficient amount of detergent is used. >>> *Using insufficient amount of detergent for the water hardness can cause the laundry to become stiff in time. Use appropriate amount of detergent according to the water hardness.*
- Detergent is put in the wrong compartment. >>> *If detergent is put in the prewash compartment although prewash cycle is not selected, machine can take this detergent during rinsing or softener step. Put the detergent in the correct compartment.*
- Detergent might be mixed with the softener. >>> *Do not mix the softener with detergent. Wash and clean the dispenser with hot water.*

Laundry does not smell like the softener. (**)

- Detergent is put in the wrong compartment. >>> *If detergent is put in the prewash compartment although prewash cycle is not selected, machine can take this detergent during rinsing or softener step. Wash and clean the dispenser with hot water. Put the detergent in the correct compartment.*
- Detergent might be mixed with the softener. >>> *Do not mix the softener with detergent. Wash and clean the dispenser with hot water.*

Detergent residue in the detergent drawer. (**)

- Detergent is put in wet drawer. >>> *Dry the detergent drawer before putting in detergent.*
- Detergent has gotten damp. >>> *Keep detergents closed in an environment free of humidity and do not expose them to excessive temperatures.*
- Water pressure is low. >>> *Check the water pressure.*
- The detergent in the main wash compartment got wet while taking in the prewash water. Holes of the detergent compartment are blocked. >>> *Check the holes and clean if they are clogged.*
- There is a problem with the detergent drawer valves. >>> *Call the Authorized Service Agent.*
- Detergent might be mixed with the softener. >>> *Do not mix the softener with detergent. Wash and clean the dispenser with hot water.*

There is detergent left on the laundry. (**)

- Excessive laundry was loaded in. >>> *Do not load the machine in excess.*
- Wrong programme and temperature were selected. >>> *Select the proper programme and temperature for the laundry to be washed.*
- Wrong detergent was used. >>> *Select the proper detergent for the laundry to be washed.*

Too much foam forms in the machine. (**)

- Improper detergents for the washing machine are being used. >>> *Use detergents appropriate for the washing machine.*
- Excessive amount of detergent is used. >>> *Use only sufficient amount of detergent.*
- Detergent was stored under improper conditions. >>> *Store detergent in a closed and dry location. Do not store in excessively hot places.*
- Some meshed laundry such as tulle may foam too much because of their texture. >>> *Use smaller amounts of detergent for this type of item.*
- Detergent is put in the wrong compartment. >>> *Put the detergent in the correct compartment.*
- Softener is being taken early. >>> *There may be problem in the valves or in the detergent dispenser. Call the Authorized Service Agent.*

Foam is overflowing from the detergent drawer.

- Too much detergent might be used. >>> *Mix 1 tablespoonful softener and ½ l water and pour into the main wash compartment of the detergent drawer.*
- Put detergent into the machine suitable for the programmes and maximum loads indicated in the "Programme and consumption table". When you use additional chemicals (stain removers, bleaches and etc), reduce the amount of detergent.

Troubleshooting

Laundry remains wet at the end of the programme. (*)

- Excessive foam might have occurred and automatic foam absorption system might have been activated due to too much detergent usage. >>> *Use recommended amount of detergent.*

Drying process lasts long.

- Pores of the Air inlet filter in front of the machine might be clogged. >>> *Wash the Air inlet filter with lukewarm water.*
- The Air inlet filter in front of the machine might be blocked. >>> *Remove everything, if any, that is blocking ventilation in front of the Air inlet filter.*
- Ventilation may be inadequate due to the very small area of installation. >>> *Open the doors and windows to avoid too much increase in the ambient temperature.*
- Excessive laundry was loaded in. >>> *Do not overload the Washer-Dryer.*
- Laundry may not have been spun adequately. >>> *Have the Washer-Dryer perform spin in a higher spin speed during washing step.*
- Tap is turned off. >>> *Open the taps.*

Laundry remains wet at the end of drying.

- Improper programme might have been used for the laundry type >>> *Select a proper programme for the type of the laundry by checking the maintenance tags on the clothes or use time programmes additionally.*
- Pores of the Air inlet filter in front of the machine might be clogged. >>> *Wash the Air inlet filter with lukewarm water.*
- Excessive laundry was loaded in. >>> *Do not overload the Washer-Dryer.*
- Laundry may not have been spun adequately. >>> *Have the Washer-Dryer perform spin in a higher spin speed during washing step.*

Machine does not turn on or the programme does not start.

- Power cable might not be plugged in. >>> *Make sure that the power cable is plugged in.*
- Programme might not be set or Start / Pause / Cancel button might not be pressed. >>> *Make sure that the program has been set and the machine is not in Pause mode.*
- Child lock might be enabled. >>> *Deactivate the Child Lock.*

Laundry is shrunk, yellowed, felted or damaged.

- Improper programme might have been used for the laundry type >>> *Select a proper programme for the type of the laundry by checking the maintenance tags on the clothes or use time programmes additionally. Laundry not suitable for drying should not be dried.*

Drying cannot be performed

- Laundry might not be dry or drying function has not been enabled. >>> *Check if drying function is also selected after the selected washing programme.*

Loading door cannot be opened.

- Loading door of the machine may not be opened due to safety reasons. >>> *If "wait to cool down to open...." warning is displayed, machine will keep the loading door locked for your safety until it cools down. You can accelerate cooling by running any 10-minute drying programme.*

(*) Machine does not switch to spinning step when the laundry is not evenly distributed in the drum to prevent any damage to the machine and to its surrounding environment. Laundry should be rearranged and re-spun.

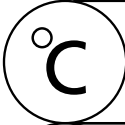
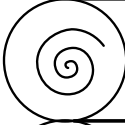




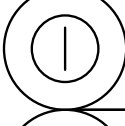
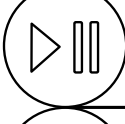
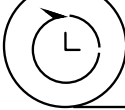
(**) Regular drum cleaning is not applied. >>> *Clean the drum regularly. See, 6.2*





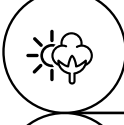
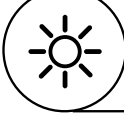


CAUTION

If you cannot eliminate the problem although you follow the instructions in this section, consult your dealer or the Authorized Service Agent. Never try to repair a nonfunctional product yourself.

	COTTONS
	COTTON ECO
	SYNTHETICS
	DELICATE
	WOOL
	HAND WASH
	SHIRTS
	RINSE
	SPIN DRAIN
	SUPER SHORT EXPRESS
	DAILY EXPRESS

	TEMPERATURE
	SPIN
	PREWASH
	EXTRA RINSE
	ANTI CREASING
	FAVOURITE
	ON OFF
	START PAUSE
	END TIME

	WASH&WEAR
	6 KG WASH & 6 KG DRY
	BABYPROTECT PLUS
	SYNTHETICS DRYING
	COTTONS DRYING
	DRYING

