



Set up and user manual for  
eclipse<sup>2</sup> & eclipse<sup>2X</sup>  
cameras





## Before You Begin

Read these instructions before installing or operating this product.

**Note:** This camera should be installed by a qualified service person and should conform to local codes.

This manual provides installation and operation information. To use this document, you must have the following minimum qualifications:

- A basic knowledge of CCTV systems and components
- A basic knowledge of electrical wiring and low-voltage electrical connections

## Intended use

Only use this product for its designated purpose; refer to the product specification and user documentation.

## Customer Support

For assistance in installing, operating, maintaining and troubleshooting this product refer to this document and any other documentation provided. If you still have questions, please contact Norbain Technical Support and Sales:

Norbain SD Ltd, 210 Wharfedale Road, IQ Winnersh, Wokingham, Berkshire RG41 5TP, England.

UK: +44 (0) 118 912 5000

**Note:** You should be at the equipment and ready with details before calling Technical Support.

## Conventions Used in this Manual

**Boldface** or button icons highlight command entries. The following **WARNING**, **CAUTION** and **Note** statements identify potential hazards that can occur if the equipment is not handled properly:



**\* WARNING:**

Improper use of this equipment can cause severe bodily injury or equipment damage.

---



**\*\* Caution:**

Improper use of this equipment can cause equipment damage.

---

**Note:** Notes contain important information about a product or procedure.

## RoHS Announcement



All lead-free products offered by the company comply with the requirements of the European law on the Restriction of Hazardous Substances (RoHS) directive, which means our manufacture processes and products are strictly “lead-free” and without the hazardous substances cited in the directive.



The crossed-out wheeled bin mark symbolizes that within the European Union the product must be collected separately at the product end-of-life. This applies to your product and any peripherals marked with this symbol. Do not dispose of these products as unsorted municipal waste.

## CE Mark



This apparatus is manufactured to comply with the radio interference. A Declaration of Conformity in accordance with the following EU standards has been made. The manufacturer declares that the product supplied with this document is compliant the provisions of the EMC Directive 2004/108/ EC, the CE Marking Directive 93/68 EEC and all associated amendments.

\* This symbol indicates electrical warnings and cautions.

\*\* This symbol indicates general warnings and cautions.

NORBAIN SD LTD reserves the right to make changes to the product and specification of the product from time to time without prior notice.

## WARNINGS & CAUTIONS:

To reduce the risk of fire or electric shock, do not insert metallic objects through any ventilation grills or other openings on the equipment.

## CAUTION

	<b>CAUTION</b> RISK OF ELECTRIC SHOCK DO NOT OPEN	
<b>WARNING: TO REDUCE THE RISK OF ELECTRIC SHOCK, DO NOT REMOVE COVER (OR BACK). NO USER-SERVICABLE PARTS INSIDE. REFER SERVICING TO QUALIFIED SERVICE PERSONNEL.</b>		

## IMPORTANT SAFEGUARDS

---

### 1. READ AND RETAIN INSTRUCTIONS

Read the instruction manual before operating the equipment.  
Retain the manual for future reference.

### 2. CLEANING

Turn the unit off and unplug from the power outlet before cleaning. Use a damp cloth for cleaning. Do not use harsh cleansers or aerosol cleaners.

### 3. ATTACHMENTS

Do not use attachments unless recommended by manufacturer as they may affect the functionality of the unit and result in the risk of fire, electric shock or injury.

### 4. MOISTURE

Unless specified, do not use equipment near water or other liquids.

### 5. ACCESSORIES

Equipment should be installed in a safe, stable location. Any wall or shelf mounting accessory equipment should be installed using the manufacturer's Instructions. Care should be used when moving heavy equipment. Quick stops, excessive force, and uneven surfaces may cause the equipment to fall causing serious injury to persons and objects.

### 6. VENTILATION

Openings in the equipment, if any, are provided for ventilation to ensure reliable operation of the unit and to protect it from overheating. These openings must not be blocked or covered.

### 7. POWER SOURCES

The equipment should be operated only from the type of power source indicated on the marking label. If you are not sure of the type of power supplied at the installation location, contact your dealer. For equipment designed to operate from battery power, refer to the operating instructions.

### 8. GROUNDING OR POLARIZATION

Equipment that is powered through a polarized plug (a plug with one blade wider than the other) will fit into the power outlet only one way. This is a safety feature. If you are unable to insert the plug fully into the outlet, try reversing the plug. Do not defeat the safety purpose of the polarized plug.

**Alternate Warning:** If the equipment is powered through a three-way grounding-type plug, a plug having a third (grounding) pin, the plug will only fit into a grounding-type power outlet. This is a safety feature. Do not defeat the safety purpose of the grounding-type plug.

If your outlet does not have the grounding plug receptacle, contact your local electrician.

### 9. CORD & CABLE PROTECTION

Route power cords and cables in a manner so to protect them from damage by being walked on or pinched by items placed upon or against them.

### 10. LIGHTNING

For protection of the equipment during a lightning storm or when it is left unattended and unused for long periods of time, unplug the unit from the wall outlet. Disconnect any antennas or cable systems that may be connected to the equipment.

This will prevent damage to the equipment due to Lightning or power-line surges.

## **11. OVERLOADING**

Do not overload wall outlets and extension cords as this can result in a risk of fire or electric shock.

## **12. SERVICING**

Do not attempt to service the video monitor or equipment yourself as opening or removing covers may expose you to dangerous voltage or other hazards.

Refer all servicing to qualified service personnel.

## **13. DAMAGE REQUIRING SERVICE**

Unplug the equipment from the wall outlet and refer servicing to qualified service personnel under the Following conditions:

**A.** When the power supply cord or the plug has been damaged.

**B.** If liquid has spilled or objects have fallen into the Unit.

**C.** If the equipment has been exposed to water or other liquids.

**D.** If the equipment does not operate normally by following the operating instructions, adjust those controls that are covered by the operating instructions as Improper adjustment for other controls may result in damage to the unit.

**E.** If the equipment has been dropped or the casing is damaged.

**F.** When the equipment exhibits a distinct change in performance.

## **14. REPLACEMENT PARTS**

When replacement parts are required, be sure the service technician uses replacement parts specified by the manufacturer or that have the same characteristics as the original part.

Unauthorized substitutions may result in fire, electric shock, or other hazards.

## **15. SAFETY CHECK**

Upon completion of any service or repairs to the equipment, ask the service technician to perform safety checks to verify that the equipment is in proper operating condition.

## **16. FIELD INSTALLATION**

The installation of equipment should be made by a qualified service person and should conform to all local codes.

## **17. CAUTION - THESE SERVICING**

INSTRUCTIONS ARE FOR USE BY QUALIFIED SERVICE PERSONNEL ONLY.  
TO REDUCE THE RISK OF ELECTRIC SHOCK DO NOT PERFORM ANY  
SERVICING OTHER THAN THAT CONTAINED IN THE OPERATING  
INSTRUCTIONS UNLESS YOU ARE QUALIFIED TO DO SO.

## **18. Use certified/Listed Class 2 power supply transformer only**

# TABLE OF CONTENTS

---

INTRODUCTION ----- 1

MINIMUM PC/LAPTOP SPEC ----- 1

INSTALLATION & CONNECTION ----- 2

CONNECTING TO AN ECLIPSE<sup>2</sup> ----- 4

NETWORK SETTINGS ----- 5

CAMERA SET UP ----- 7

FACTORY DEFAULT ----- 17

CAMERA STREAMS ----- 17

UPGRADING CAMERA SOFTWARE ----- 18

SPECIFICATIONS ----- 22

LINE DRAWINGS ----- 23

# INTRODUCTION

---

## Features:

- 5MP 1 / 2.5" CMOS
  - 360<sup>0</sup> x 185<sup>0</sup> field of view lens
  - 2144 x 1944 max resolution @12.5ips
  - Colour / monochrome operation
  - TDN operation with 850nm IR response (eclipse<sup>2X</sup> only)
  - MJPEG, H.264 or MPEG-4 encoding
  - Constant and Variable Bitrate options
  - 14 panoramic and ePTZ streams
  - De-warping is done within camera
  - Accessible via internet browsers (PC/laptop required)
  - 10 dynamic privacy zones
  - Up to 20 users with selectable access levels
  - Ceiling, Wall or Table orientation
  - PoE or 12-24VDC operation (6W)
  - Compact design
  - Multi language support: English, Russian, German, French, Spanish, Italian, Dutch & Portuguese
  - IP66 (eclipse<sup>2X</sup> only)
  - IK10 (EN62262) vandal resistance (eclipse<sup>2X</sup> only)
- 

## MINIMUM PC / LAPTOP SPEC

---

### Recommended minimum specification:

OS: Windows 7 Professional  
CPU: Intel i3 Dual Core, 2Ghz or above  
Display: 1024 x 768, 256MB supporting DirectX 11  
RAM: 3GB  
HDD: 20MB for installation  
Browser: Internet Explorer 9  
          Mozilla Firefox 6  
          Safari 5  
          Chrome 17



# INSTALLATION & CONNECTION

## Overview:

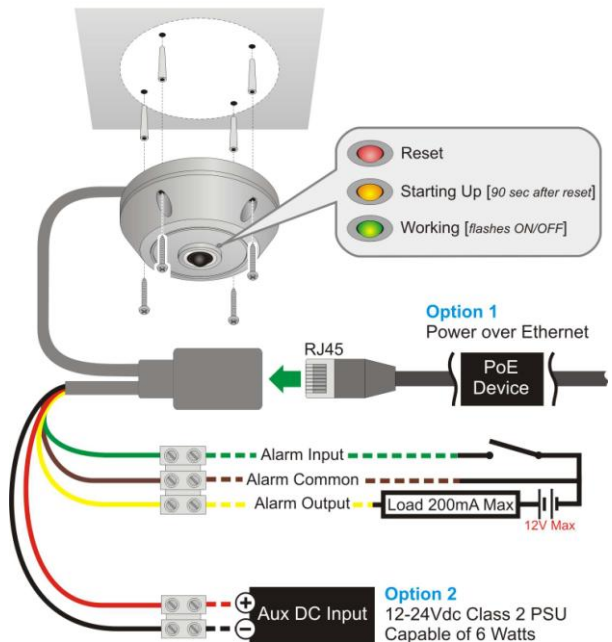
The eclipse<sup>2</sup> cameras are 5MP 360<sup>0</sup> with panoramic and de-warped IP video streams, designed to be integrated via SDK and API into Video Management Systems (VMS). This manual enables basic set up of the camera via to view the live streams via web browser.

The eclipse<sup>2</sup> cameras have a sealed design, with no internal moving parts and are suitable for wall, ceiling or table / floor mounting from the box (additional bracketry can be purchased for further mounting options). Using the provided screws (or others suitable fixings to ensure the camera is securely fitted). If the eclipse<sup>2</sup> is wall mounted, putting the status LED in the '12 o'clock' position will ensure the camera is the correct way up.

**Fig1.** Cross section of Surface-mount installation



**Fig2.** Example of typical ceiling mount and wiring



The eclipse<sup>2</sup> cameras are provided with a “flying” lead, containing all of the required connections. Both data and power connections to the camera are via a single cable with an RJ45 socket. The camera uses Power over Ethernet (PoE), but can also be powered by 12-24VDC using the additional red and black wires in the lead. PoE supply should be provided by equipment compliant with IEEE 802.3AF.

In addition to the RJ45 and power input cables, there is also the alarm in, alarm out and common wires.



<b>Wire</b>	<b>Description</b>
Red	12-24VDC
Black	0V
Green*	Alarm Input
Yellow**	Alarm Output
Brown	Alarm Common

*\*Orange on some models*

*\*\* White on some models*

# CONNECTING TO AN ECLIPSE<sup>2</sup>

All eclipse<sup>2</sup> cameras are defaulted with DHCP enabled. If no DHCP server is present on the network, the camera will use the default IP address of 192.168.1.100. To communicate with the camera, a suitable PC or laptop computer is required (see minimum PC spec on page 1), which has been enabled to use the appropriate subnet, together with a browser such as Firefox or Internet Explorer.

On the browser address bar, simply type in the IP address of the camera. A username and password will be required to access the camera, by default these are:-

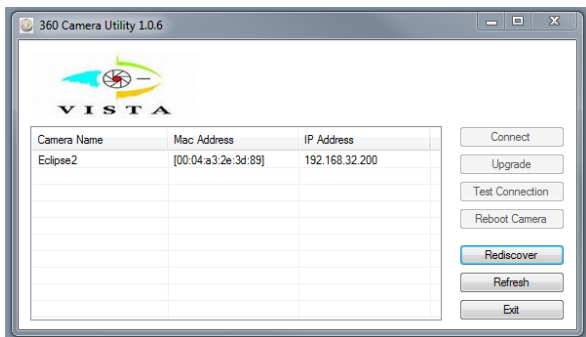
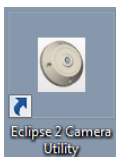
Username: Admin

Password: Admin

**(note that user name and password is case sensitive)**

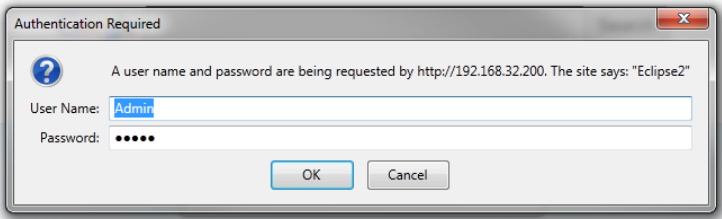
**Or:**

Load the eclipse<sup>2</sup> camera utility from the disc onto your PC / Laptop:



1. Run the program
2. Click the 'Rediscover' button
3. Highlight the eclipse<sup>2</sup> you wish to connect to
4. Click 'Connect'
5. Your PC / Laptop default web browser will then connect

User Name: Admin / Password: Admin



All eclipse<sup>2</sup> cameras have been tested with the following browsers (other web browsers may work but have not been tested and may not have all functionality):

- Internet Explorer 9
- Mozilla Firefox 6
- Safari 5
- Chrome 17

Notes on IE (Internet Explorer):

- 1) An additional step is required to install the java applet required to display the MJPEG streams. Java runtime environment is required for this and must be installed separately (if this is not already present on the PC / Laptop). Once this is installed and the webpage refreshed, you will be prompted to install the java applet.
- 2) ePTZ control (UP / DOWN / LEFT / RIGHT / ZOOM) of the camera will require you to use the PTZ / Zoom buttons on the camera web page and you will not be able to click on the image to ePTZ / zoom.

## **NETWORK SETTINGS**

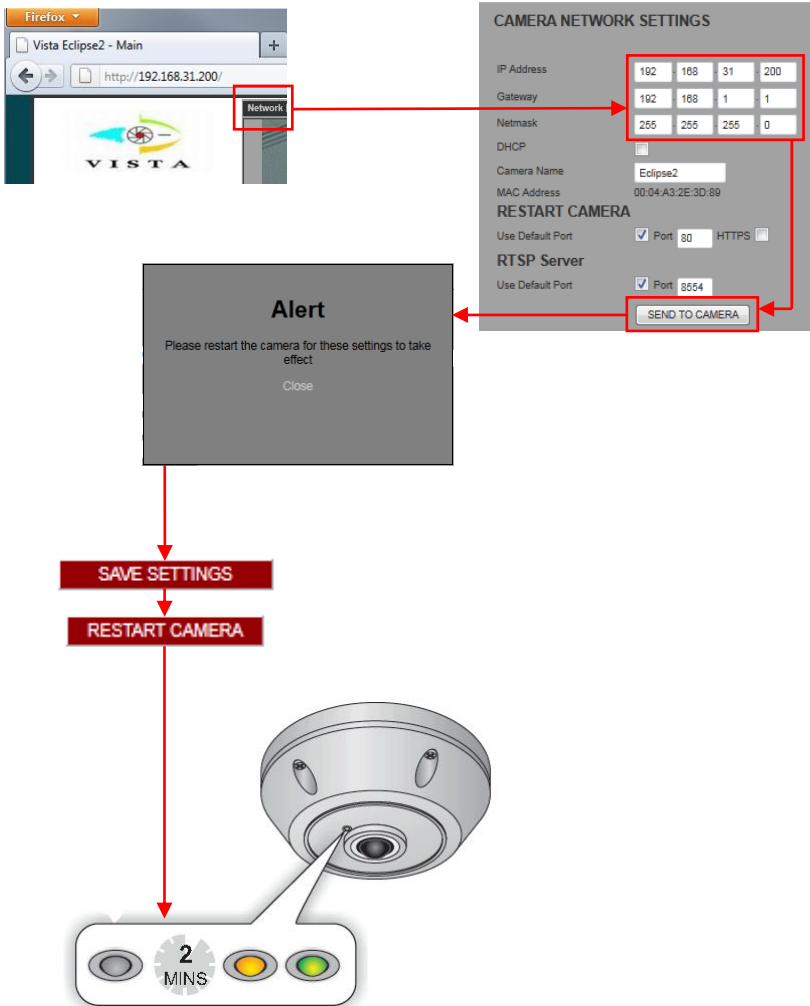
---

Once connected to the eclipse<sup>2</sup> camera, navigate to the Network page.

Change network settings as required:

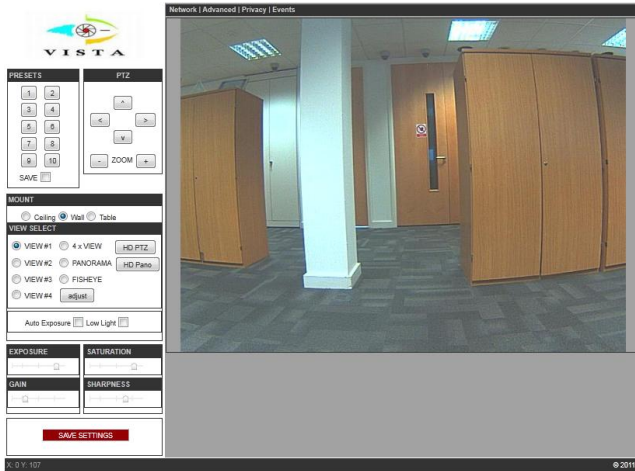
1. Change IP settings to suit
2. Click the 'SEND TO CAMERA' button
3. Warning comes telling you restart camera (close this)
4. Click 'SAVE SETTINGS' button
5. Click 'RESTART CAMERA' button
6. The camera will then restart after approx 2mins
7. Reconnect using the new IP address

Fig3. IP address change schematic



# CAMERA SET UP

## Main screen



## Presets

There are 10 presets available that can be used with the following de-warped streams:

VIEW#1 / VIEW#2 / VIEW#3 / VIEW#4 / 4 x VIEW (quad)

To set a preset

1. Tick the save box
2. ePTZ to the required point
3. Click on the preset button (1 to 10) that you wish to save
4. Untick the save box
5. Preset is now saved

## PTZ

With all views (except FISHEYE) there is the ability to ePTZ the image. This can be achieved with the UP / DOWN / LEFT / RIGHT & ZOOM + / - buttons:



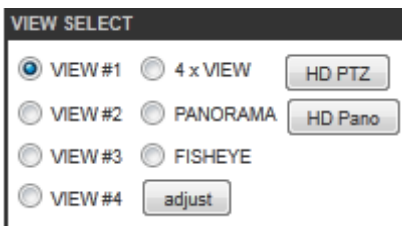
Please note that in internet explorer (IE), this is the only way to ePTZ the selected view. With other browsers (e.g. Firefox), ePTZ can be achieved by holding the mouse cursor on the displayed image and left clicking the mouse to navigate around the image, the scroll wheel acts as the zoom in / out function.

## Mount

Ceiling / Wall / Table

This orientates both the image and ePTZ functionality (if wall mounted ensure the LED is in the 12 o'clock position as this will have the image the correct way up).

## View Select



This allows live viewing of the selected stream

<b>Name</b>	<b>Resolution</b>	<b>Type</b>
View #1 - 4	640 x 480	De-warped ePTZ
4 x View (quad)	320 x 240 (per section)	De-warped ePTZ
Panorama	640 x 480	2 x 180 <sup>0</sup> panorama (pan function only)
Fisheye	640 x 480	Fisheye view
HD PTZ	1280 x 720	HD de-warped ePTZ
HD Pano	1280 x 240	360 <sup>0</sup> panorama (pan function only)

### Adjust

Each individual view can be adjusted via a sliding scale for:  
Brightness / Contrast / Quality

### Auto Exposure

Tick to enable - this assists with the picture level in varying lighting conditions

### Low Light

Tick to enable - this turns the camera into permanent monochrome mode (will only work if Auto low light box is unticked in Misc setting page)

### Global Image settings

The following settings can be adjusted via a sliding scale which is applied globally to ALL streams:

Exposure / Saturation / Gain / Sharpness

### Save Settings

If any changes are made to the settings then click this box



## Network Page

Camera network settings (please refer to page 5 & 6 on how to change)

IP Address	192	168	32	200
Gateway	192	168	32	1
Netmask	255	255	255	0

## Camera Name

Allows you to change the name of the camera (upto 60 characters)

## DHCP

Tick to enable if your network supports DHCP

## Default Port

Change the port to suit your network settings

Defaulted to: TCP / IP = 80 / HTTPS = 443

## RTSP Server

Change the port to suit your network settings

Defaulted to: 8554

**NOTE: to ensure any changes to the network page are saved, please refer to page 5 of this manual for the correct procedure.**

## Advanced Page

### User settings

Different levels of access to the camera and its features are available.

**USER SETTINGS**

**DELETE/EDIT CURRENT USERS**

Select user: Admin ▼ DELETE USER

Edit user:

New Password: [input field]

Confirm new password: [input field]

Status:  admin  user SAVE CHANGES

**ADD NEW USER**

Username: [input field]

Password: [input field]

Confirm password: [input field]

Status:  admin  user SAVE CHANGES

Two levels of user access are available:

- Admin – all camera functions are available
- User – only camera viewing and PTZ operations are permitted

The default user is 'Admin' and cannot be removed. The default password for this user is also 'Admin' and this password can be changed. If this password is lost, it can be restored to 'Admin' by fully defaulting the camera (see page 18).

20 further additional users can be added if required.

### Camera Details

This will list the following information:

Software version / OS Version / Hardware / Firmware / Website (Pages)

### Camera Date / Time

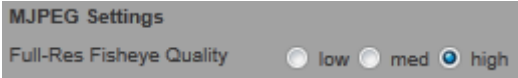
Set current date and time via the drop down boxes

### Set Language

Select one of the following from the drop down:

English / Russian / German / French / Spanish / Italian / Dutch / Portuguese

## MJPEG Settings



Select the Full fish eye quality:

Low (50%): 250KB/frame

Medium (70%): 350KB/frame

High (80%): 400KB/frame

Max bandwidth at full frame rate: 12fps @ 400KB = 4.8Mbit/s

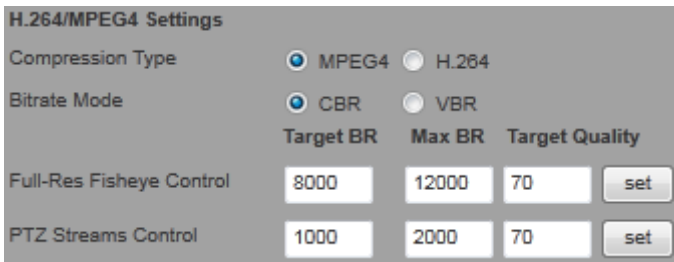
## H.264 / MPEG4 Settings

Compression Type:

Select between either MPEG-4 or H.264 (you will be asked to save settings and restart camera to accept this change)

Bitrate Mode:

Select between CBR (Constant Bitrate) or VBR (Variable Bitrate) modes



CBR (Constant Bitrate):

In CBR mode only the Target BR column applies, so select the Target BR value you want for Fisheye and PTZ Streams, then click 'set' button to the right to save this setting.

View	CBR Target BR
Full-Res Fisheye Control	3000kbit/s (default)
PTZ Streams Control	1000kbit/s (default)
Range selectable	50 - 5000kbit/s

VBR (Variable Bitrate):

In VBR mode both Max BR and Target Quality applies, so select the Max BR value and Target Quality value you want for both Fisheye and PTZ Streams, then click 'set' button to the right to save this setting.

View	VBR Max BR	Target Quality
Full-Res Fisheye Control	10000kbit/s (default)	70 (default)
PTZ Streams Control	2000kbit/s (default)	70 (default)
Range selectable	50 - 12000kbit/s	50 – 90

In VBR the camera encodes at the Target Quality unless the size of the encoded data is greater than the Max BR. It then temporarily reduces the image quality to keep under the maximum bit rate. Once quality is below a set level, the encoder drops frames to keep within the Max BR figure.

### Misc Settings

Flicker Frequency:

Off / 50Hz / 60Hz

Disable Status LED:

Tick box to disable the LED

Auto Lowlight:

Tick box to enable automatic switching between colour and monochrome images

Gamma:

Use the drop down box to select the level:

0.5 / 0.6 / 0.7 / 0.8 / 0.9 / 1

MaxFPS:



Clicking on the MaxFPS button takes you to a separate page that allows the individual setting of ips (images per second) for each stream:

Stream:	Name	Pixels	Control
0	Full Fisheye	2144 x 1944	None
1	View #1	640 x 480	ePTZ
2	View #2	640 x 480	ePTZ
3	View #3	640 x 480	ePTZ
4	View #4	640 x 480	ePTZ
5	4 x View (Top Left)	320 x 240	ePTZ
6	4 x View (Top Right)	320 x 240	ePTZ
7	4 x View (Bottom Left)	320 x 240	ePTZ
8	4 x View (Bottom Right)	320 x 240	ePTZ
9	Fisheye	640 x 480	None
10	Panorama (Top 180 <sup>0</sup> )	640 x 240	Pan
11	Panorama (Bottom 180 <sup>0</sup> )	640 x 240	Pan
12	HD Pano	1280 x 240	Pan
13	HD PTZ	1280 x 720	ePTZ

Type the ips (1, 2, 3, 4, 6, 12) you want to achieve in the white box and click on the SET box adjacent to this to save (failure to do this will result in your changes not being saved).

## Privacy Page

This page allows the setting up of up to 10 dynamic privacy zones and are then applied to all camera IP streams (once saved):



To set a privacy zone

1. Select from the drop down box which zone you want to apply
2. Using the mouse, click 4 points on the image that you want to obscure (lines are automatically joined up)
3. Click save if you wish to accept the privacy zone, click clear if you want to amend

If you wish to delete a previously applied privacy zone, select via the drop down box and click the 'clear' button

The 'clear all regions' button deletes all previously stored privacy zones

## Events Page

The Alarm input and Alarm output can be configured from the Events page, which is selected from the main page menu bar.

**ALARM EVENT**  
Enter the alarm event settings on this page.

**SAVE SETTINGS**

**<< BACK**

**ALARM EVENTS**

ID: 0

Trigger: none

Input Active State:  low  high

Output Signal:  no  yes

Output Active State:  low  high

Duration (s): 1

FTP Output:  no  yes

Stream Number: 0

Frames Per Second: 1

TCP Output:  no  yes

TCP Message: Input Alarm Triggered

**SAVE CHANGES** **TRIGGER EVENT**

© 2011

To setup alarms:-

1. Set the Trigger pull down to Input
2. Set the Input Active signal state to Low or High as required (Low = NO going CLOSED on alarm, High = NC going OPEN on alarm).
3. Set the Output Signal to yes, if required and set its Active state to low or high (Low = NC going OPEN on alarm, High = NO going CLOSED on alarm).
4. With this set, the alarm output signal will be switched when the alarm is triggered.

5. Set the duration of the alarm
6. FTP - Set whether images are to be sent via FTP during the alarm period. The FTP server details must be set up on the Network page, to use this feature.
  - a. Set the View number to be sent via FTP (see Video Streams in section 4 below)
  - b. Set the number of Frames per second to be set via FTP. The duration times the frames per second will give the total number of frames to be sent for each alarm trigger.
7. Click Save Changes to store the settings

The Trigger Event button can be used to manually trigger the alarm and to test the setup.

## FACTORY DEFAULT

---

1. Remove camera from installed location (leave powered up)
2. Remove screw entirely (highlighted below)
3. Insert pin/paperclip and hold until the LED cycles (red/amber/green)
4. Camera will then reboot (this can take up to 2mins)
5. Reconnect to the camera (refer to page 4 of this manual if unsure)



## CAMERA STREAMS

---

You can individually select a stream from an eclipse<sup>2</sup> with one of the 2 following commands, which can be entered into a web browser address bar – the characters that are in bold are fields that are user adjustable/definable. Please note that this is the image stream only and there is no ePTZ functionality. The description in brackets relates to the image stream in the camera web page – refer to the table on page 14 for more detail).

### HTTP Stream (MJPEG)

[http://ipaddress/mjpg/video.cgi?view=\*\*0\*\*&maxfps=\*\*4\*\*](http://ipaddress/mjpg/video.cgi?view=<b>0</b>&maxfps=<b>4</b>)

'view=' can be set from 0 to 13:

0 = Full Fisheye 2144x1944

1-4 = 640x480 de-warped ePTZ (View #1 to #4)



5-8 = 320x240 de-warped ePTZ (individual streams from 4 x View)  
9 = 640x480 Fisheye (Fisheye)  
10-11 = 640x240 180 Panorama (Panorama)  
12 = 1280x240 HD 360 Panorama (HD Pano)  
13 = 1280x720 HD de-warped ePTZ (HD PTZ)

'maxfps=' can be set at:1, 2, 4, 6, 8, 12ips (images per second)

## RTSP (MPEG4 or H.264)

rtsp://**ipaddress**:8554/stream**0**

Stream number can be set from 0 to 13

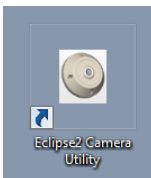
0 = Full Fisheye 2144x1944  
1-4 = 640x480 de-warped ePTZ (View #1 to #4)  
5-8 = 320x240 de-warped ePTZ (individual streams from 4 x View)  
9 = 640x480 Fisheye (Fisheye)  
10-11 = 640x240 180° Panorama (Panorama)  
12 = 1280x240 HD 360 Panorama (HD Pano)  
13 = 1280x720 HD de-warped ePTZ (HD PTZ)

## **UPGRADING THE CAMERA SOFTWARE**

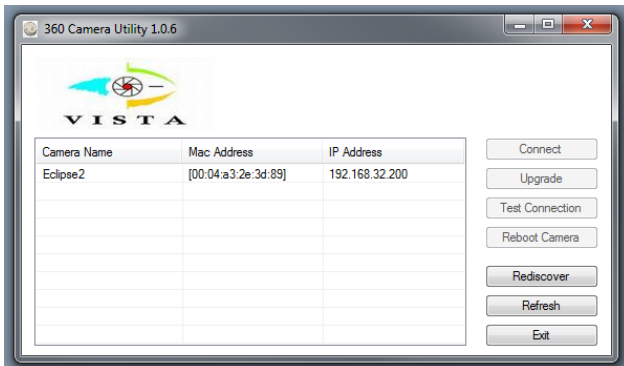
---

It is assumed that the person carrying out this software update has at a minimum, basic IP skills and a PC/Laptop set within the same IP range as the camera along with the relevant permissions to load and run the camera utility.

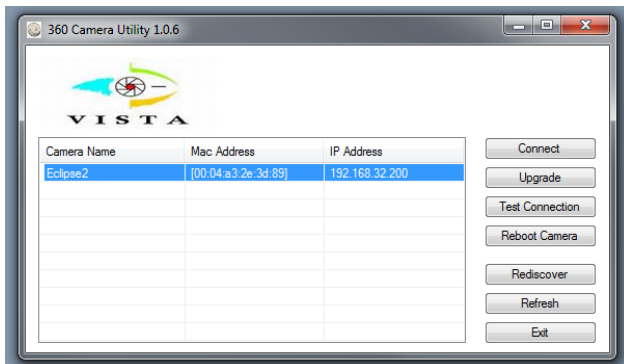
1) Open the eclipse<sup>2</sup> camera utility on your PC/Laptop



2) Once the program is open it will carry out a search for any eclipse<sup>2</sup> cameras on your network, if it doesn't find any automatically then click the 'Rediscover' button.

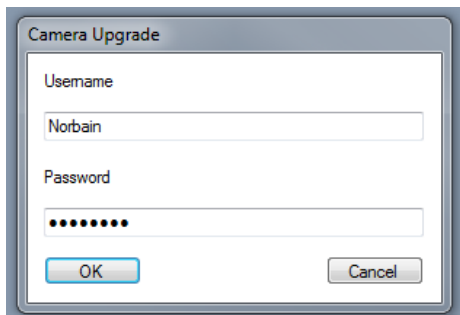


3) Click on the eclipse<sup>2</sup> camera you want to upgrade to highlight it and then click 'Upgrade' button.



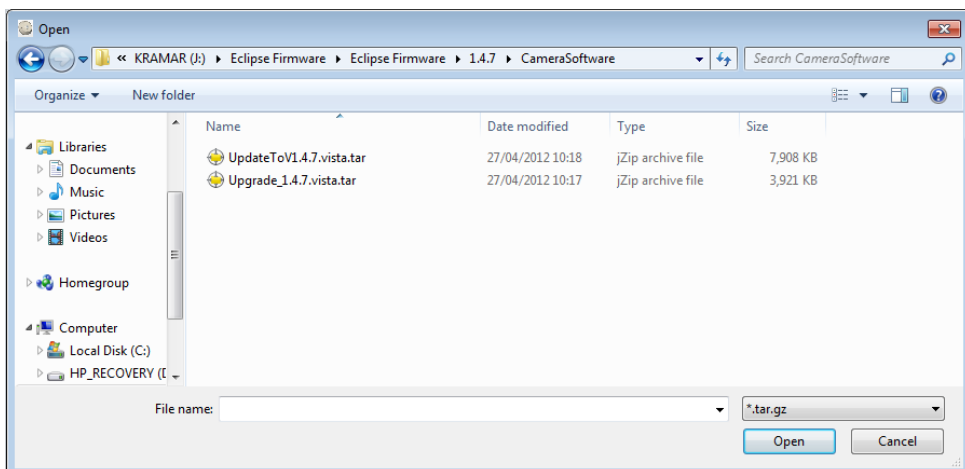
4) When the following box is shown, enter the Username and Password (both fields are case sensitive), then click 'OK'.

Username: Norbain  
Password: Eclipse2

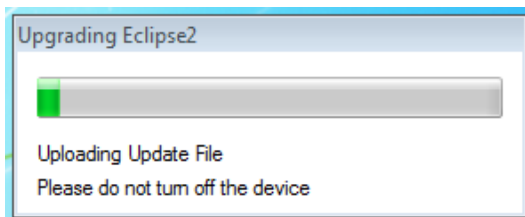


5) Browse to the location to where you have stored the software update, highlight the update you wish to do and click 'Open'.

**(IMPORTANT: Please note that you will need to select the 'Update to' file if for example you are going from 1.3.x to 1.4.x version of camera software. Select the 'Upgrade' file if you are going from a 1.4.2 to 1.4.7)**



6) The following timer box is displayed. During this update do not turn the camera off (this update can take up to 5mins to upload).



7) Once the update is completed, click the 'OK' box on the screen and then click on 'Yes' to reboot the camera to finish the software update (this reboot can take approx 3-5minutes).

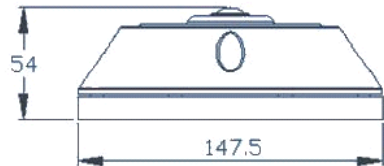
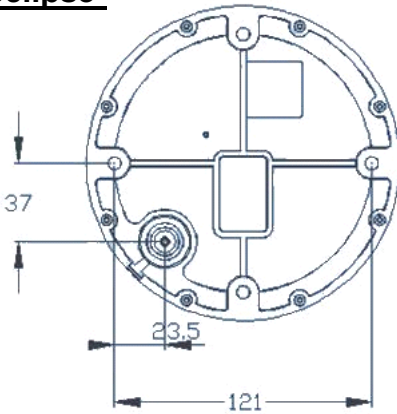
# SPECIFICATIONS

	eclipse <sup>2</sup>	eclipse <sup>2x</sup>
Image Sensor	1/2.5" CMOS 5MP	
Lens	F2.0 185° Fisheye	
Responsivity @F2.0	0.5Lux (colour)	0.5Lux (colour) & 0.09Lux (mono)
IR response	None	850nm via fixed notch filter
Max Resolution	2144 x 1944	
Signal to Noise Ratio	38dB Max	
Auto Exposure	Off / On	
Auto Low Light	Off / On (colour / monochrome operation)	
Low Light	Off / On (monochrome operation)	
Gamma	0.5 / 0.6 / 0.7 / 0.8 / 0.9 / 1	
Global Image Settings	Exposure / Saturation / Gain / Sharpness (via individual slide bars)	
Per-View (stream) Image Settings	Brightness / Contrast / Quality (via individual slide bars)	
Languages	English / Russian / German / French / Spanish / Italian / Dutch / Portuguese	
LED Operation	On / Off	
Preset Positions	10 (de-warped streams 1-8 inclusive)	
Privacy Zones	10 dynamic areas	
Orientation	Ceiling / Wall / Table	
Compression	MJPEG & H.264 or MPEG-4	
Frame-rate	1, 2, 3, 4, 6, 12ips selectable per stream	
Streaming	Multiple simultaneous ePTZ and Panoramic streams	
Security	Password Protection, HTTPS encryption	
Protocols	TCP/IP / DNS / DHCP / RTP / RTSP / RTCP / IPv4 / HTTP / HTTPS / FTP	
Users	Admin & User (max 20)	
Simultaneous connections	20	
Stream 0	2144x1944 (Full-Res Fisheye)	
Stream 1 to 4	640x480 (De-warped ePTZ)	
Stream 5 to 8	320x240 (De-warped ePTZ)	
Stream 9	640x480 (Fisheye)	
Stream 10 & 11	640x240 180° (Panoramic ePTZ)	
Stream 12	1280x240 360° (Panoramic ePTZ)	
Stream 13	1280x720 HD 360° (De-Warped Panoramic ePTZ)	
Type	HTTP / RTSP	
Bit rate	MJPEG: 250KB/frame to 4.8Mbit/s (CBR) H.264 or MPEG-4: 50 to 5000kbit/s (VBR) H.264 or MPEG-4: 50 to 12000kbit/s (Target Quality: 50 to 90)	
Application Programming Interface	Open API for integration with NVR and VMS systems	
Playback Software Developers Kit	SDK for ePTZ and panoramic view creation in NVR playback software	
Alarms	1 x Alarm Input, 1 x Alarm Output	
Alarm Triggers	External input	
Alarm Events	File upload via FTP, external output activation	
Power	PoE IEEE 802.3af. Class 2 / 12-24VDC Max 5W	
Construction	Cast aluminium	
Colour	RAL7035	
Weight (net)	650g	685g
Weight (gross)	900g	935g

Dimensions (unit)	147.5mm $\varnothing$ , 54mm (H)	147.5mm $\varnothing$ , 75mm (H)
Dimensions (boxed)	170 (W) x 170 (H) x 170 (D)mm	
Operating Temperature	0 to 50 <sup>o</sup> C	-10 to 50 <sup>o</sup> C
Storage Temperature	-20 to 60 <sup>o</sup> C	
Vandal resistance	None	IK10 (EN62262)
Operating Humidity / IP Rating	60% humidity, non-condensing	IP66
Approvals	CE: EN55022:2010 (Class B) , EN50130-4:1995, +A1: 2001, +A2:2003 (Class A)	

## LINE DRAWINGS

### eclipse<sup>2</sup>



### eclipse<sup>2X</sup>

