

## TEMPPPO 6.1

### TEMPPPO 6.1.24

#### Features

The performance of changing the test step columns width was improved up to 90% percent.

#### Fixes

TT-8066487: Multi selection mode after project close – open works now again without any problems

TT-8067245: Submitting a PR using Change Synergy - Temppo interface with attachment works now without any problems.

TT-8066797: Race condition for "Order" menu is now fixed

TT-8052913: After importing TP/TC with linked requirements inline images won't get lost anymore

TT-8065016: Creating reports (-report) from CLI using "-hide" option works now fine

### TEMPPPO 6.1.23

#### Features

##### ***TEMPPPO Test Manager: CLI Command Line Interface***

TEMPPPO supports the possibility to run several commands from the command line. These commands can be executed either in a graphical or in a non-graphical mode (new feature).

The non-graphical mode hides all graphical elements from the user and TEMPPPO is only running inside the command line. Messages and errors are written to the standard out and standard error channels. In case of an error TEMPPPO stops executing the current command and terminates with a special result error code (see User Manual, chapter 8.2). This mode can be used in a full automated environment (Continuous Integration). After executing the command TEMPPPO

always terminates. The non-graphical mode is switched on with the command “–hide”.

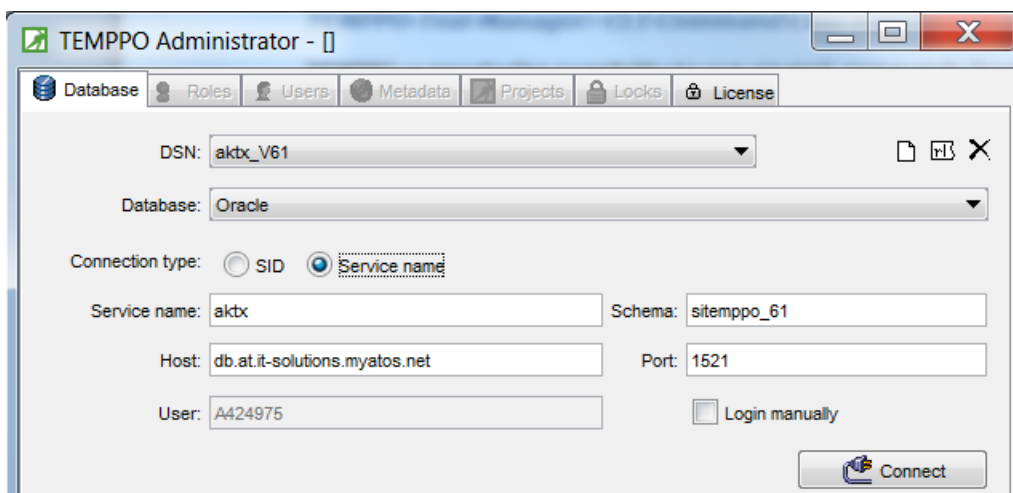
There are new functions for

- creating new branches
- creating new test suites
- exporting test suites to XML
- importing test suites from XML

Look for examples in chapter 8.1 of User Manual

### ***TEMPPO Administrator: Support Oracle with Load Balancer (TT-7985955)***

TEMPPO Administrator provides now a new function where you can select the **Connection type**. If you use Oracle in a regular way select **SID**. If you changed to an Oracle database service (load balancer) choose **Service name**.

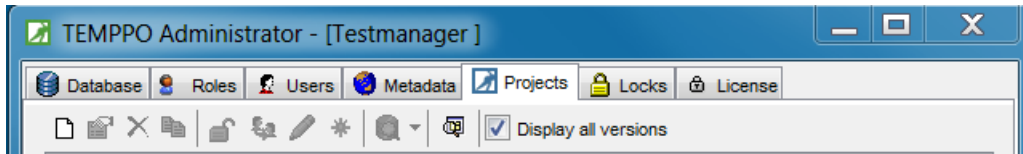


The screenshot shows the TEMPPO Administrator application window with the 'Database' tab selected. The window has a title bar and a menu bar with options: Database, Roles, Users, Metadata, Projects, Locks, and License. The main configuration area includes the following fields and options:

- DSN:** A dropdown menu showing 'aktx\_V61'.
- Database:** A dropdown menu showing 'Oracle'.
- Connection type:** Two radio buttons: 'SID' (unselected) and 'Service name' (selected).
- Service name:** A text input field containing 'aktx'.
- Schema:** A text input field containing 'sitemppo\_61'.
- Host:** A text input field containing 'db.at.it-solutions.myatos.net'.
- Port:** A text input field containing '1521'.
- User:** A text input field containing 'A424975'.
- Login manually:** An unchecked checkbox.
- Connect:** A button with a circular arrow icon.

## Fixes

TT-8018582: Checkbox "Display all versions" is now displayed in TEMPPPO Administrator – tab "Projects"



TT-7960428: Java Heap Space error doesn't occur anymore during XML export /import.

TT-7099492: Exporting a test suite via CLI works now fine

TT-8018626: Exception after exporting a TP

TT-8052913: After export and import TP/TCs via XML images are not lost anymore, when requirements are linked.

## TEMPPPO 6.1.22

### Fixes

Performance improvement of "Open Test suite" window: Only the latest "x" baseline versions are displayed whereas "x" can be configured and is set to "5" by default.

TT-7902885: Update of requirement structures do not fail anymore with ORA messages

## TEMPPPO 6.1.21

### Fixes

Size of Field "Bug ID" is not changed anymore after opening "Settings" window

## TEMPPPO 6.1.20

### Fixes

Performance improvement for selecting test cases with activated tab "test steps"

## TEMPPPO 6.1.19

### Fixes

Performance improvement for setting complex filter

## TEMPPPO 6.1.17

### Fixes

Find function works now correctly for test suites.

Back slashes in attribute values used in filter criterions are handled correctly.

## TEMPPPO 6.1.16

### Fixes

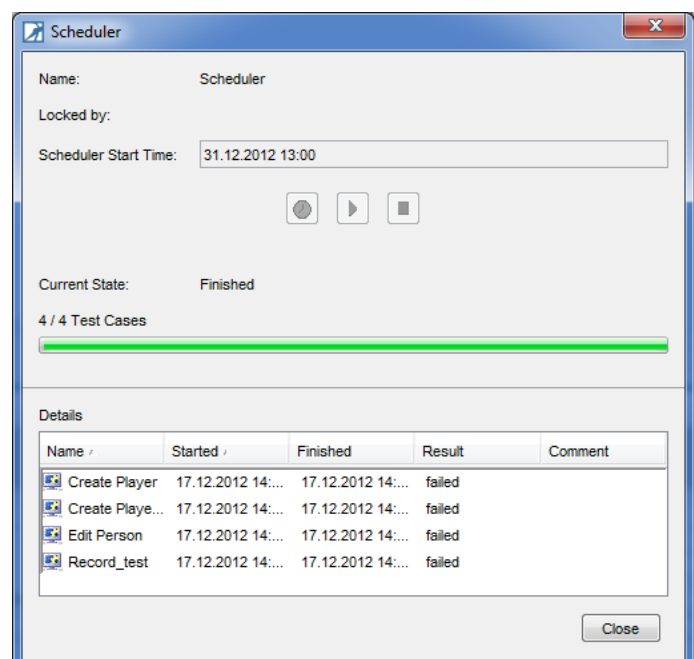
### *TEMPPPO Test Manager*

**Test Suite Scheduler::** Formatted text (e.g. bold) in test steps is now displayed correctly in all Excel reports.

## TEMPPPO 6.1.15

### Fixes

TT-7651858: It is not possible to edit a TC which is activated by hyperlink, but not displayed due to a filter.



Updating to a prior baseline works now correctly for DOORS.

Loading DOORS directories and projects works now correctly for updating process.

DOORS module to be updated is now always preselected.

Test suite with empty name cannot be created anymore

"Requirement Lock message" isn't displayed after activating "Apply requirement updates", when an update of a requirement structure was done immediately before.

Tabular test suite reports cause no more problems for images in suite columns, which have been deleted after upload.

## TEMPPPO 6.1.14

### Fixes

Button "Upload" (image) is now always enabled if an image test step cell is selected.

#7427609: Word and Excel reports display Chinese characters correctly.

"Test package IDs" are now always reported.

"Test case type" and "Type" are now reported correctly.

Loading DOORS modules is now faster for module import and update.

#7586561: "Precondition" and "Postcondition" are now correctly mapped for CSV test case import.

If a requirement structure is updated by another module, its ID is now stored correctly.

#7600841: For CSV requirement import it is not possible anymore that TEMPPPO creates default IDs getting longer than allowed in case of multiple duplicates .

Correct message is now displayed if DOORS module for update doesn't exist anymore in DOORS database.

### Features

# 7588384: Cancel button now available in "Export test suite to XML" dialog

## TEMPPPO 6.1.13

### Features

Find / Replace all: If the window List occurrences is opened, the button **Replace all** changes to **Replace all occurrences**. If you click that button all items of **List occurrences** are replaced.

If you press the button **Replace all** without opened **List occurrences** all items according to the selected search direction are replaced.

### Fixes

#7498488: Settings for test step columns are stored correctly again.

#7506455: Find function for test packages works now fine again.

#7374158: Current merging is now possible without any problems.

#7499553: Importing test structures with non ASCII characters in file name can now be imported.

#7506362: Replacing a word with a hyperlink works now correctly.

Correct refresh after changing "Requirement ID" to "Name" in TEMPPPO Requirement Manager in tree view settings.

Report problem for non-latest requirement structures with views solved.

TEMPPPO Manager: Missing "Close" statements fixed now in migrator

TEMPPPO license server: In case of faulty jlmsserver.ini a log entry is written.

## TEMPPPO 6.1.12

### Fixes

#6096618, 7350006: Assigning roles for a user on 2 different db schema is now working correctly.

#7323503: Doubled requirements

#7364438: Previewing full report of all attributes is now OK after calculating columns width correctly.

#7364573: Find/replace window shows combo box for selecting search criterion correctly.

#7364585: Saving Newsboard – General is working correctly

#7364589: Consequential error of “Clipboard” problem in case of 2 concurrent TEMPPO’s is resolved.

Delimiter for numbering in TEMPPO RM is now allowed empty.

Progress chart in TEMPPO RM can now be saved correctly.

6.1 Migrator is working for PostGreSQL correctly.

Closing Newsboard with opened test suite is OK

Report generator doesn’t show any progress message about “chart creation” when no chart was selected.

Performance improvement when displaying “About dialog”

No more problem of a set filter together with selected requirement tab of test structure root.

Assigning attributes to lots of TCs works now correctly again.

## TEMPPO 6.1.10

### Fixes

Reporting of several test suites with filter based on test results is working now correctly.

#7336876: Total number of requirements is displayed now correctly in test structure report.

“Number of requirements in view” is now displayed correctly for manual requirement structures in the case that latest editable version is different to the last checked in one.

“Apply requirement updates” is now working correctly for all use cases.

Merge of “Actual Test Execution Time” works now for case of 2 concurrent users on branch and main latest version.

Package "TEMPPPO Designer (IDATG) Tasks" cannot be moved up and down anymore.

#6098818, #7350006: Roles in user details are now updated when displaying roles of 2 different schemas consecutively.

Result icons are visible when previewing Word report.

#7281444: "Actual Test Execution Time" is now displayed correctly in reports for "Several Test Suites"

## Features

Tab "General" is displayed always, if a new TP or TC shall be created.

Edit Filter ("Edit entries") is now ordered first in combo box.

Message box is now displayed, if "Actual Test Execution Time" is merged to a locked TC in main latest version.

Performance improvement was realized by loading TC's steps and images only, if tab "Steps" is activated.

## TEMPPPO 6.1.9

### Fixes

#7279161: Menu items "Move up / down" are disabled if first respectively last TP is selected.

#7278456: Copying TPs/TCs with requirement links to a prior test structure version which has not linked any requirements is done correctly.

#7279422: 2 concurrent users cannot create TPs with same name when pasting in parallel way anymore.

#7281444: "Actual test execution time" is reported correctly in report type "Several test suites".

"Actual test execution time" doesn't allow more than 2 digits.

## TEMPPPO 6.1.8

### Fixes

#7218987: In tabular report the user defined id is now displayed correct.

Copying a picture from one instance and pasting to another instance of TEMPPPO is now possible.

## TEMPPPO 6.1.7

### Features

“RTF Import” is extended to support same functionality as CSV and XML import.

### Fixes

#7187588: Test Structure content is now displayed correctly in tabular report.

#7179503: Adding new values to an attribute is now possible.

Test Step Number in table report is now displayed correct.

License server installer was update to request new license file.

## TEMPPPO 6.1.6

### Features

“Test Structure CSV Import” is able to import requirement links and multiple test steps.

“CSV Import” supports now German as language.

### Fixes

#7149666: “List Occurrence” displays now the correct number.

#7131637: Test Step content is now displayed correctly.

#6971948: Task list shows selected requirement id from Doors now.

In TEMPPPO-Administrator locks of test suites can be found.

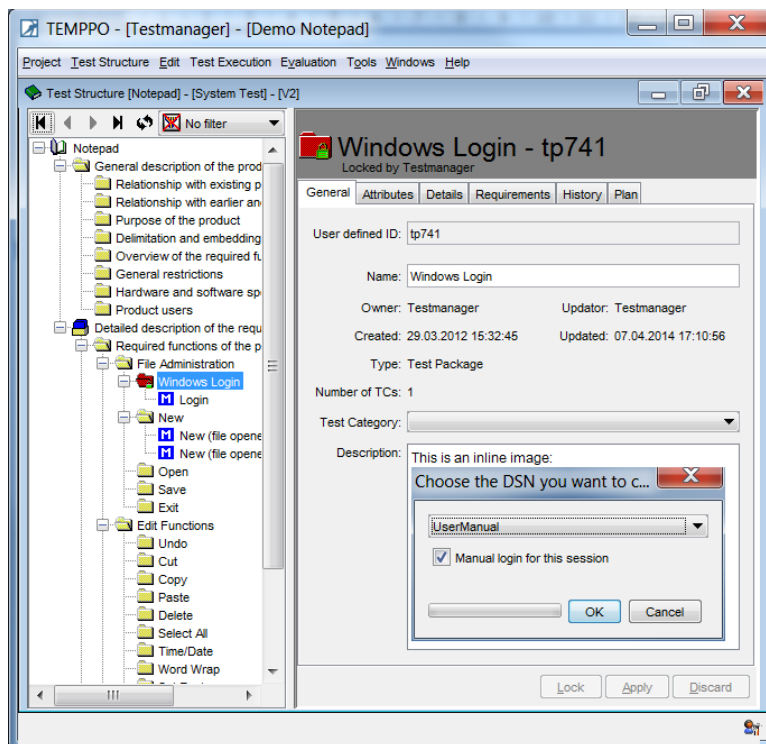
Progress bar for creating a test structure based on a requirement structure is improved.

Move ownership of a test suite root is now working correctly.

## TEMPPPO 6.1.5

### Features

**Inline images:** All text fields in TEMPPPO for TPs and TCs in test structures and test suites provide the possibility to insert images (gif, png, jpg, jpeg, jpe) and mix it up with text.



#7059950: A message is added to "Plan" tab for "Test Case Template" that it has only effect on new created test cases.

### Fixes

#7054539: Attaching a file to a test package via "Details" tab works now correctly.

#7061868: Switching to Java 1.6.0\_45 fixes the problem of empty icons in file browsing dialog.

#7063424: Menu item "Report Selected" is now enabled after switching between test suite and test structure and back to test suite.

#7068182: The "Find" function works now correctly for the special use case utilizing "Occurrence" window and changing the search direction.

#6345356: Switching to Java 1.6.0\_45 prevents TEMPPPO getting an error message when disconnecting from database.

#7070121: Importing requirement structures containing German umlauts is now possible.

#7062653: Removing own (current) test structure root lock works now correctly

#7064558: New "Cancel" button allows aborting test structure XML update. Pressing "ESC" behaves like "Cancel" action.

#7063234: Deleting or renaming an existing chart in "Report settings" window is now possible again.

#7067433: Exporting a filter with "Planned tester" != "No planned tester" is now possible again.

#6741415: All Test cases are displayed correctly. The rare faulty use case of 2 users A and B is now fixed:

- A opens Test Structure
- A checks-in current state of the test structure (creates new main latest)
- A opens new created Main Latest
- A selects Test Package tp01 and creates new Test Case tc02
- B opens Test Structure and selects and Locks Test Case tc02
- B changes content of tc02 (e.g. Test Goal) but DON'T apply this changes yet.
- A selects tc01 with right-click -> cut
- A selects tp02 with right-click -> paste
- B applies changes to test case tc02 now

## TEMPPPO 6.1.4

### Fixes

#7032624: Planned execution time for a whole test suite is now reported correctly.

#7032682: "Refresh" button is displayed for all analyses.

## TEMPPPO 6.1.3

### Fixes

#6890264: TEMPPPO creates new test packages and test cases IDs for an XML import, if they already exist in test structure, although user selected "Keep IDs" before.

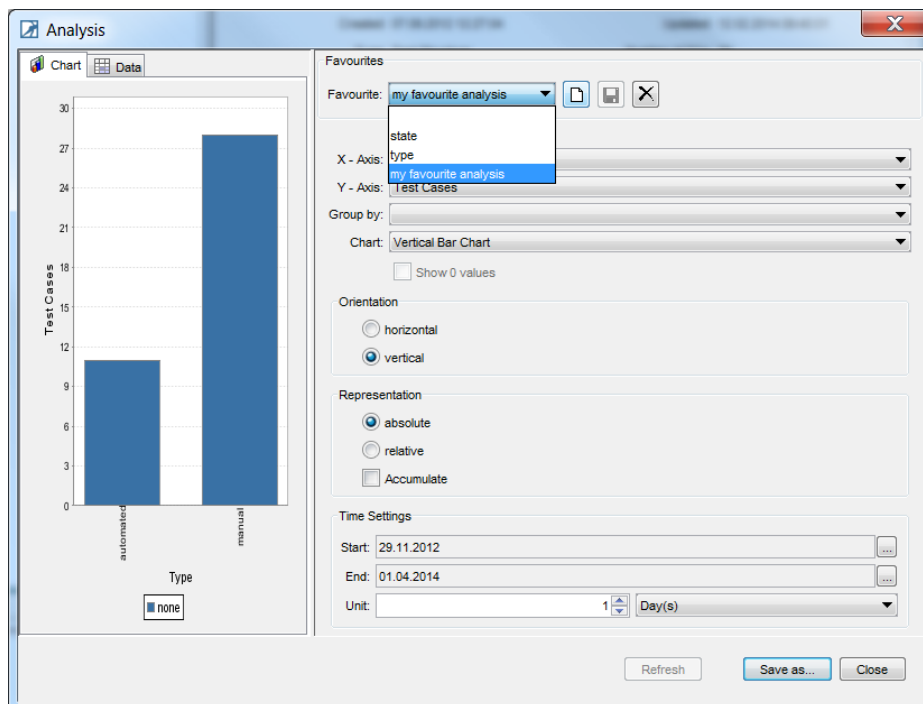
#6890262: Cancelling a test structure version change is not possible anymore, since it has been started.

Analysis "Progress Charts -> Execution -> Filtered" provides now execution attributes like "Test Result", "Tested", "Tester"... in filter.

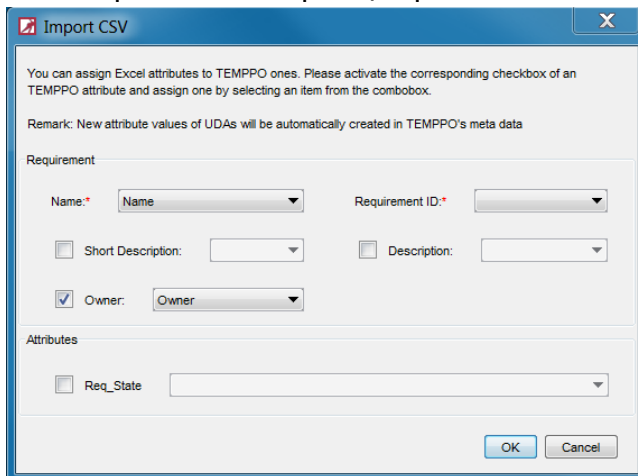
#6113167: "Project -> Exit" doesn't take 1-2 minutes anymore.

### Features

All analysis windows provide the feature to store favorites.



CSV requirement import / update works like the csv TC import.



The 'Import CSV' dialog box contains instructions on assigning Excel attributes to TEMPPPO ones. It includes a 'Requirement' section with dropdowns for Name, Requirement ID, Short Description, and Description, and a checked checkbox for Owner. The 'Attributes' section has a checkbox for Req\_State. OK and Cancel buttons are at the bottom.

You can assign Excel attributes to TEMPPPO ones. Please activate the corresponding checkbox of an TEMPPPO attribute and assign one by selecting an item from the combobox.

Remark: New attribute values of UDAs will be automatically created in TEMPPPO's meta data

Requirement

Name:\*  Requirement ID:\*

☐ Short Description:  ☐ Description:

☒ Owner:

Attributes

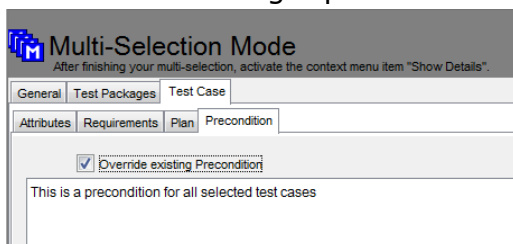
☐ Req\_State

OK Cancel

#6807296: Add coverage information to chart image:



#6114392: Setting a precondition for several test cases in multi selection mode.



The 'Multi-Selection Mode' dialog box has tabs for General, Test Packages, and Test Case. The Test Case tab is active, showing sub-tabs for Attributes, Requirements, Plan, and Precondition. The Precondition sub-tab is selected, showing a checked checkbox for 'Override existing Precondition' and a text area for the precondition.

Multi-Selection Mode

After finishing your multi-selection, activate the context menu item "Show Details".

General Test Packages Test Case

Attributes Requirements Plan Precondition

☒ Override existing Precondition

This is a precondition for all selected test cases

#6086282: Execution history can be stored to csv.

Version window: Double click in on version loads automatically test structure version.

Pressing "ESC" closes all windows with "Close" or "Cancel" button.

XML file of TEMPPPO Designer data is now versioned together with a test structure version.

## TEMPPPO 6.1.2

### Fixes

#6820783: Find/Replace: Replacing special characters e.g. “#” causes problems

#6860864: Execution history: Switching to a TC containing more results than the current one caused a problem.

## TEMPPPO 6.1.1

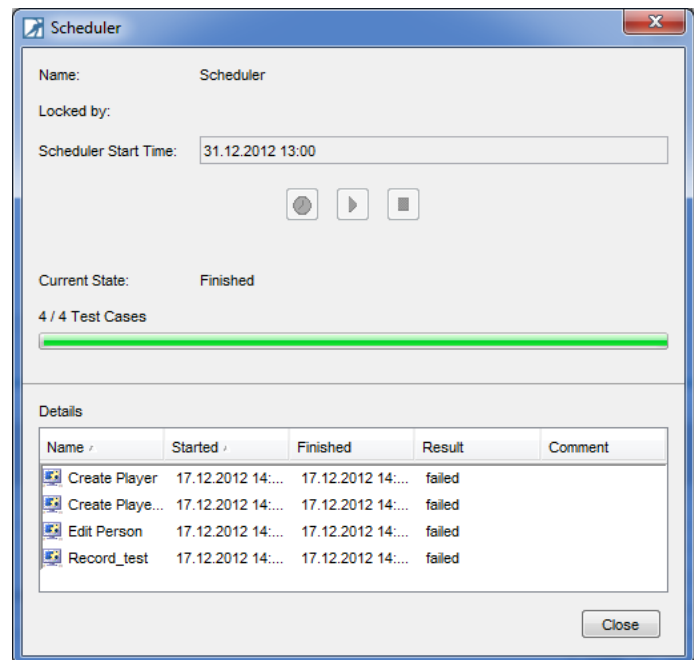
### Features

#### TEMPPPO Test Manager

**Test Suite Scheduler:** Manual test cases are not executed in a defined order, because they're mostly independent from each other. For executing automated test cases it is sufficient to do it in a user defined order. Therefore TEMPPPO provides a feature to schedule automated test cases.

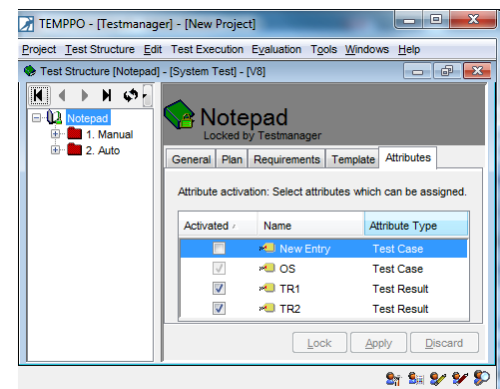
A scheduler includes general information, a start time and an ordered selection of test cases which has to be executed. For each test suite several schedulers can be defined.

For TCs which use the Universal Automated Socket connection an IP address can be provided where TCs are executed.



#### Attribute (de)activation for test structures:

In some cases attributes shouldn't be assigned to test cases anymore because they became invalid. In TEMPPPO available attributes can be restricted for assignments, but assignments from past are still visible and can be used e.g. for filtering.

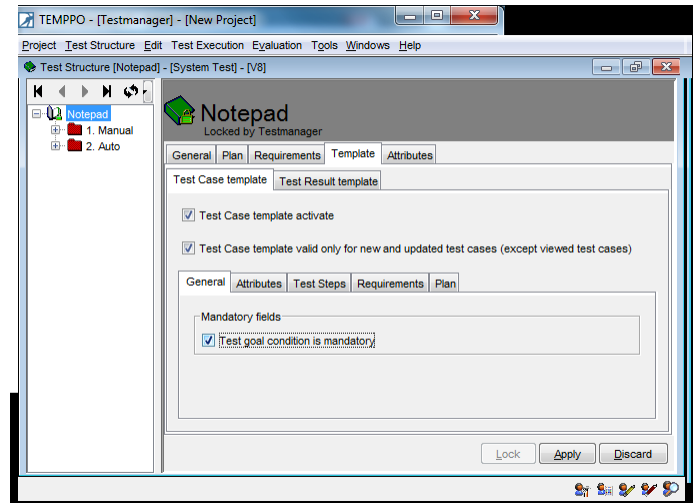


Attribute activation can be defined for each test structure in tab **Attributes**. If the checkbox for an attribute is greyed, the attribute is set in the **TC Template**. Only **Superusers** and **TEMPPPO Key Users** are allowed to deactivate attributes.

**Test Case Template (TCT):** TCT is available for test structures.

A TCT supports testers to create and update test cases in complete manner. For a TCT you can define

- **Mandatory fields** (user has to enter a **test goal, precondition, postcondition**)
- **Default values** for the **fixed attributes**, e.g. state has to be "In work", if a test case is created.
- **Inheritance of UDAs** and/or **defining UDAs as mandatory** or with a default value.
- **Inheritance of requirements** and/or **linking at least 1 mandatory requirement**.
- Default values for a **planned tester** and a **planned execution time**.

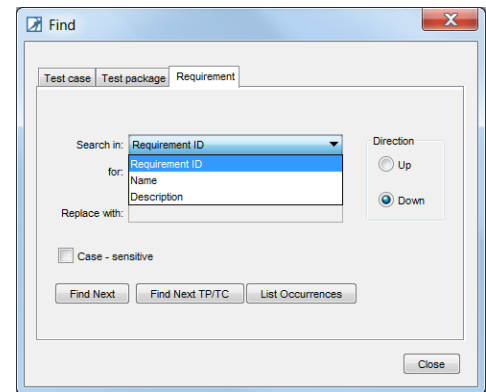


**Format options in all text fields:** It is now possible to format text using more options:

- Strikethrough
- Superscript
- Subscript
- Left aligned
- Centered
- Right aligned
- Font
- Font size
- Font color

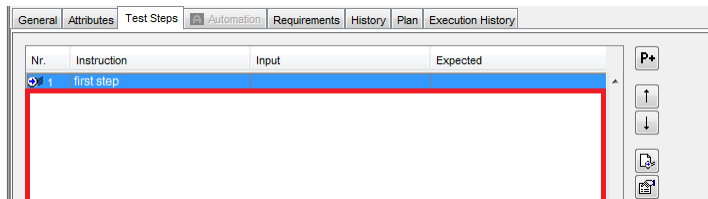


**5808523 – Find TCs by requirement ID:** Search dialog was extended by tab “Requirement”. You can search for Requirement ID, Requirement Name or Requirement Description. Replace function is disabled, of course.



**CTRL + S** saves TCs, TPs and requirements

**Create new test step by clicking:** A new test step is created, if user clicks in the white area (red encircled).



**Copy of unsaved TCs** is now possible.

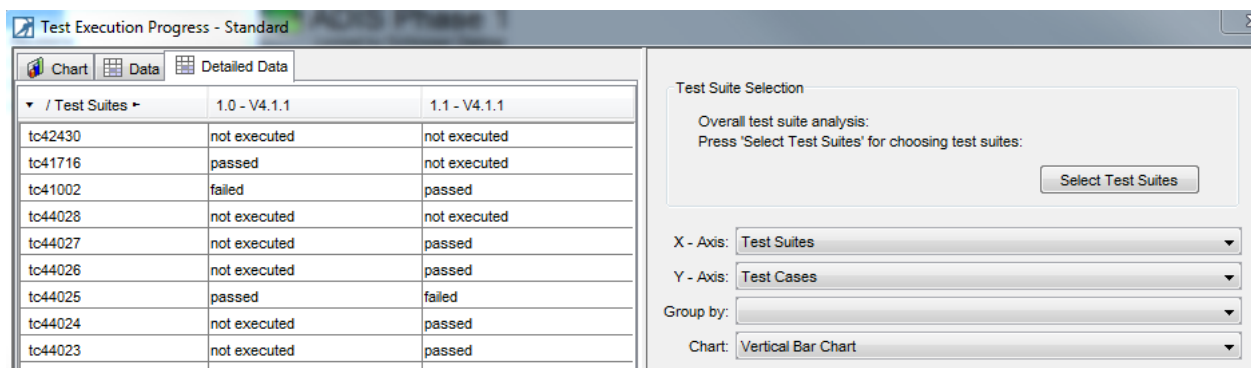
**Refresh button** was introduced in almost all analyses for calculating the chart.

**Updating a test structure** via XML was extended by **Test Goal**.

When **importing a test structure**, information about assigned requirement structures is only shown once even if lots of requirement structures are concerned.

**Test Execution Progress – Requirements only** shows also the DOORS baseline.

**Test Execution Progress – Standard** shows in tab “Detailed Data” additionally the test structure version in the column header, if “Test Cases” is selected for “y-axis” and “Test Suites” for x-axis.



**Symbol for requirement structure**  introduced for filter, RS selection,...

## **TEMPPPO Administrator**

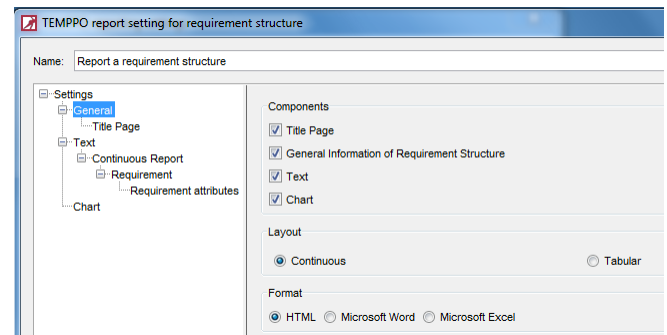
**Improve loading of projects** – test structures – versions – test suites in TEMPPPO Administrator

**6482068 – Search Meta Data:** Pressing any key filters the attributes.

**License server logging:** is improved in tab “license” -> “Log”. Each time a license is requested or released, the current number of available licenses is reported.

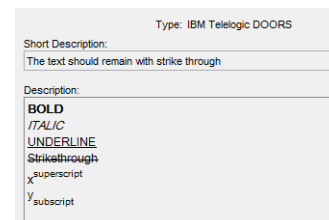
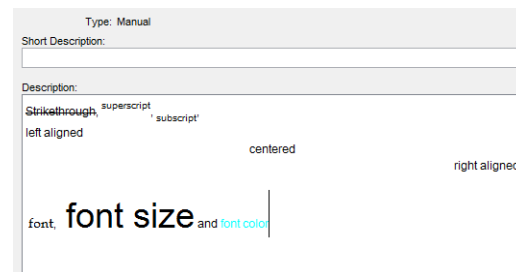
## TEMPPPO Requirement Manager

**Reporting:** TEMPPPO Requirement Manager offers a reporting feature, which allows you to create flexible textual and graphical reports from your requirement structures. A requirement structure report can be created from any node within the structure, even from a single requirement (**Evaluation > Report Selected...**).



**Format options in requirement description fields:** It is now possible to format text using more options:

- Strikethrough
- Superscript
- Subscript
- Left aligned
- Centered
- Right aligned
- Font
- Font size
- Font color



The import and update function of DOORS or RequisitePro requirements keeps the formatted text.

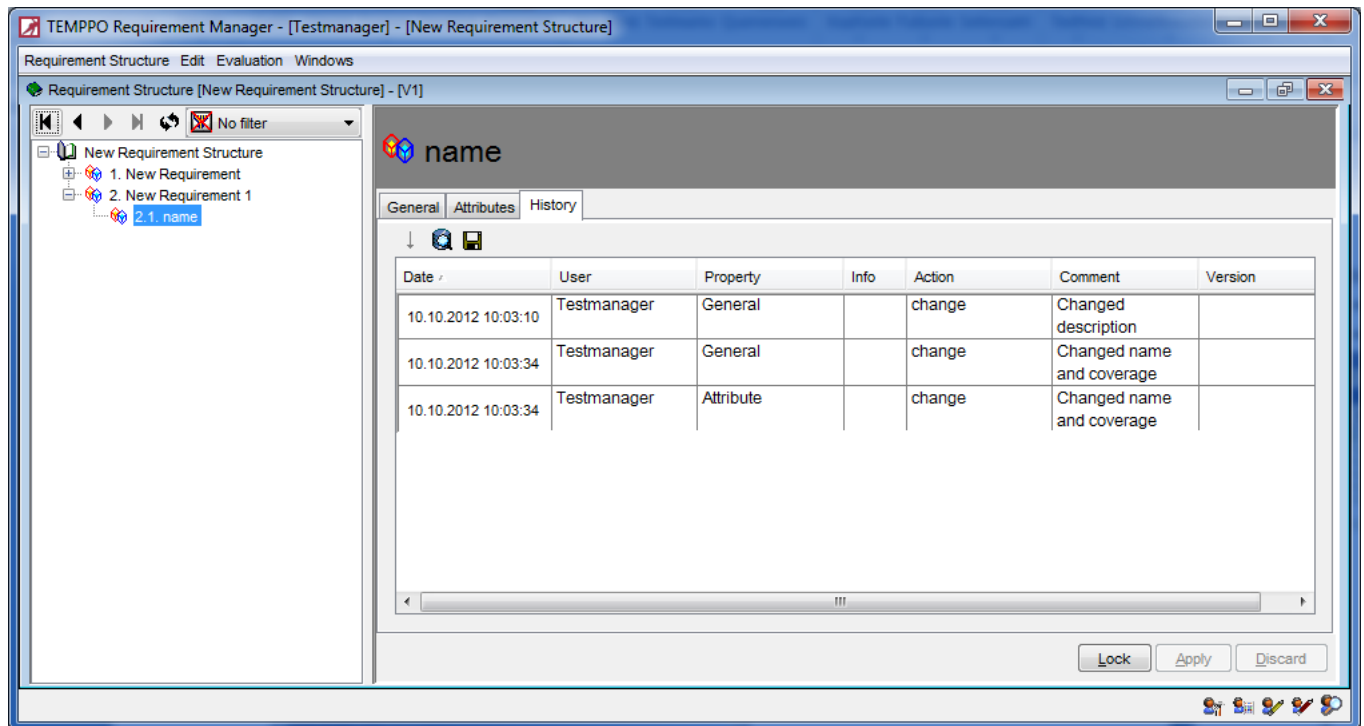
**Find Locks:** In principle TEMPPPO RM only user locks are possible. The following items can be locked:

- Requirement
- Requirement structure (root)
- Version

**Unlock selected elements** remove locks.

**History:** If a requirement is selected and tab **History** is activated requirement history is shown. Only the entries until the last check-in are shown.

The tab has the following columns:



- **Date:** changed on
- **User:** changed by
- **Property:** possible values: General, UDA
- **Comment:** Comment of user. If the mandatory flag for comment is set on and requirement is saved, a history comment is displayed on **Apply**.
- **Action:** possible values: add, change, delete, merge
- **Info:** additional information for changing reason, e.g., which attribute was set.
- **Version:** of history entry. With button **Display all entries** all history entries of all requirement structure versions can be loaded
- Action is depending on **Property** (possible values):
  - UDA: add, delete, change
  - General: change

**5675601: DOORS wizard:** Show all baselines. Downgrading to a prior baseline version is now possible.

## Fixes

- 6456447: Empty project cannot be deleted
- 6454801: Planned test execution time not OK for a report of a filtered test suite.
- 6452523: Test structure filter returns different result in test suite
- 6425332: Test suite wizard introduction page not up-to-date
- HTML continuous report shows no border lines for requirements without any description.
- 6364780: Report for several test suites shows wrong filter.
- 6288567: Confusing message during merge
- 6288324: Requirement analysis: Index out of range
- 6272763: XML error in test suite
- 6152912: Merge of TP description doesn't work
- 5726150: Requirement structure name with "umlauts"
- 6516968: Bold data is doubled in Excel report
- 6505851: DOORS baseline couldn't be imported
- 6289283 :Relative values in analysis not correct
- 6281171: Improve behavior in case of report generation for a structure with image columns