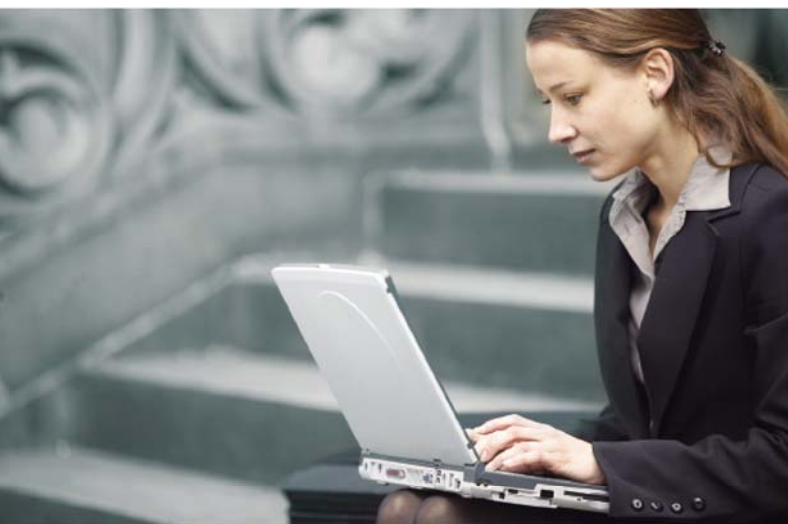


User's Manual

150Mbps 802.11n Wireless Range Extender

▶ WNAP-1110



Copyright

Copyright © 2014 by PLANET Technology Corp. All rights reserved. No part of this publication may be reproduced, transmitted, transcribed, stored in a retrieval system, or translated into any language or computer language, in any form or by any means, electronic, mechanical, magnetic, optical, chemical, manual or otherwise, without the prior written permission of PLANET.

PLANET makes no representations or warranties, either expressed or implied, with respect to the contents hereof and specifically disclaims any warranties, merchantability or fitness for any particular purpose. Any software described in this manual is sold or licensed "as is". Should the programs prove defective following their purchase, the buyer (and not this company, its distributor, or its dealer) assumes the entire cost of all necessary servicing, repair, and any incidental or consequential damages resulting from any defect in the software. Further, this company reserves the right to revise this publication and to make changes from time to time in the contents hereof without obligation to notify any person of such revision or changes.

All brand and product names mentioned in this manual are trademarks and/or registered trademarks of their respective holders.

Federal Communication Commission Interference Statement

This equipment has been tested and found to comply with the limits for a Class B digital device, pursuant to Part 15 of FCC Rules. These limits are designed to provide reasonable protection against harmful interference in a residential installation. This equipment generates, uses, and can radiate radio frequency energy and, if not installed and used in accordance with the instructions, may cause harmful interference to radio communications. However, there is no guarantee that interference will not occur in a particular installation. If this equipment does cause harmful interference to radio or television reception, which can be determined by turning the equipment off and on, the user is encouraged to try to correct the interference by one or more of the following measures:



1. Reorient or relocate the receiving antenna.
2. Increase the separation between the equipment and receiver.
3. Connect the equipment into an outlet on a circuit different from that to which the receiver is connected.
4. Consult the dealer or an experienced radio technician for help.

FCC Caution:

To assure continued compliance, (example-use only shielded interface cables when connecting to computer or peripheral devices) any changes or modifications not expressly approved by the party responsible for compliance could void the user's authority to operate the equipment.

This device complies with Part 15 of the FCC Rules. Operation is subject to the Following two conditions:

- (1) This device may not cause harmful interference
- (2) This Device must accept any interference received, including interference that may cause undesired operation.

Any changes or modifications not expressly approved by the party responsible for compliance could void the user's authority to operate the equipment.

Federal Communication Commission (FCC) Radiation Exposure Statement

This equipment complies with FCC radiation exposure set forth for an uncontrolled environment. In order to avoid the possibility of exceeding the FCC radio frequency exposure limits, human proximity to the antenna shall not be less than 20 cm (8 inches) during normal operation.

R&TTE Compliance Statement

This equipment complies with all the requirements of DIRECTIVE 1999/5/CE OF THE EUROPEAN PARLIAMENT AND THE COUNCIL OF 9 March 1999 on radio equipment and telecommunication terminal Equipment and the mutual recognition of their conformity (R&TTE).

The R&TTE Directive repeals and replaces in the directive 98/13/EEC (Telecommunications Terminal Equipment and Satellite Earth Station Equipment) As of April 8, 2000.

Safety

This equipment is designed with the utmost care for the safety of those who install and use it. However, special attention must be paid to the dangers of electric shock and static electricity when working with electrical equipment. All guidelines of this and of the computer manufacture must therefore be allowed at all times to ensure the safe use of the equipment.

National Restrictions

This device is intended for home and office use in all EU countries (and other countries following the EU directive 1999/5/EC) without any limitation except for the countries mentioned below:

Country	Restriction	Reason/remark
Bulgaria	None	General authorization required for outdoor use and public service
France	Outdoor use limited to 10 mW e.i.r.p. within the band 2454-2483.5 MHz	Military Radiolocation use. Refarming of the 2.4 GHz band has been ongoing in recent years to allow current relaxed regulation. Full implementation planned 2012
Italy	None	If used outside of own premises, general authorization is required
Luxembourg	None	General authorization required for network and service supply(not for spectrum)
Norway	Implemented	This subsection does not apply for the geographical area within a radius of 20 km from the centre of Ny-Ålesund
Russian Federation	None	Only for indoor applications

Note: Please don't use the product outdoors in France

WEEE regulation



To avoid the potential effects on the environment and human health as a result of the presence of hazardous substances in electrical and electronic equipment, end users of electrical and electronic equipment should understand the meaning of the crossed-out wheeled bin symbol. Do not dispose of WEEE as unsorted municipal waste and have to collect such WEEE separately.

Revision

User's Manual for PLANET FI-802.11n Wireless Range Extender

Model: WNAP-1110

Rev: 2.0 (February, 2014)

Part No. EM-WNAP-1110v2_v2.0 (**2081-E10350-002**)

CONTENTS

Chapter 1. Product Introduction	10
1.1 Package Contents	10
1.2 Product Description	10
1.3 Product Features	11
1.4 Product Specifications	12
Chapter 2. Hardware Installation	14
2.1 Hardware Description	14
2.1.1 The Front Panel	14
2.1.2 The Rear Panel	15
Chapter 3. Connecting the AP	17
3.1 System Requirements	17
3.2 Installing the AP	17
Chapter 4. Quick Installation Guide	21
4.1 Manual Network Setup - TCP/IP Configuration	21
4.1.1 Configuring the IP Address Manually	21
4.2 Starting Setup in Web UI	25
Chapter 5. Configuring the AP	29
5.1 Status	29
5.2 Quick Setup	31
5.3 Operation Mode	31
5.3.1 Operation Mode – Access Point	32
5.3.2 Operation Mode – Multi-SSID	34
5.3.3 Operation Mode – Repeater (Range Extender)	38
5.3.4 Operation Mode – Bridge with AP	44
5.3.5 Operation Mode – Client	49
5.4 WPS	52
5.5 Network	56
5.5.1 LAN	56
5.6 Wireless	58
5.6.1 Wireless Settings	58
5.6.2 Wireless Security	60
5.6.3 Wireless MAC Filtering	65
5.6.4 Wireless Advanced	68
5.6.5 Antenna Alignment	69

5.6.6	Throughput Monitor	70
5.6.7	Wireless Statistics	71
5.7	DHCP	72
5.7.1	DHCP Settings.....	72
5.7.2	DHCP Clients List	74
5.7.3	Address Reservation	75
5.8	System Tools	77
5.8.1	SNMP	77
5.8.2	Time Settings	79
5.8.3	Diagnostic	81
5.8.4	Ping Watch Dog	84
5.8.5	Firmware Upgrade	84
5.8.6	Factory Defaults.....	85
5.8.7	Backup & Restore	86
5.8.8	Reboot	87
5.8.9	Password	87
5.8.10	System Log	89
5.8.11	Statistics	92
Chapter 6.	Quick Connection to a Wireless Network	94
6.1	Windows XP (Wireless Zero Configuration).....	94
6.2	Windows 7 (WLAN AutoConfig)	96
6.3	Mac OS X 10.x	99
6.4	iPhone / iPod Touch / iPad	101
Appendix A:	Planet Smart Discovery Utility	105
Appendix B:	Factory Default Settings.....	106
Appendix C:	Troubleshooting	107
Appendix D:	Specifications	109
Appendix E:	Glossary	110

FIGURE

FIGURE 2-1	WNAP-1110 FRONT PANEL	14
FIGURE 2-2	WNAP-1110 REAR PANEL	15
FIGURE 3-1	ADJUST THE DIRECTION OF THE ANTENNA	18
FIGURE 3-2	HARDWARE INSTALLATION OF THE WNAP-1110 WIRELESS AP	19
FIGURE 3-3	HARDWARE INSTALLATION OF THE WNAP-1110 WIRELESS AP	19
FIGURE 4-1	TCP/IP SETTING	22
FIGURE 4-2	WINDOWS START MENU	23
FIGURE 4-3	SUCCESSFUL RESULT OF PING COMMAND	23
FIGURE 4-4	FAILED RESULT OF PING COMMAND	24
FIGURE 4-5	LOGIN THE AP	25
FIGURE 4-6	LOGIN WINDOW	25
FIGURE 4-7	WNAP-1110 QUICK SETUP	26
FIGURE 4-8	QUICK SETUP – OPERATION MODE	26
FIGURE 4-9	QUICK SETUP – WIRELESS	27
FIGURE 4-10	QUICK SETUP – NETWORK	27
FIGURE 4-11	QUICK SETUP – FINISH	28
FIGURE 4-12	BASIC WIRELESS INTERNET CONNECTION	28
FIGURE 5-1	MAIN MENU	29
FIGURE 5-2	STATUS	30
FIGURE 5-3	OPERATION MODE	31
FIGURE 5-4	WIRELESS – AP MODE	33
FIGURE 5-5	TOPOLOGY – AP MODE	33
FIGURE 5-6	OPERATION MODE – MULTI-SSID	34
FIGURE 5-7	TOPOLOGY – MULTI-SSID	36
FIGURE 5-8	MULTI-SSID – ENABLE VLAN	36
FIGURE 5-9	MULTI-SSID – VLAN TOPOLOGY	38
FIGURE 5-10	OPERATION MODE - REPEATER (RANGE EXTENDER)	39
FIGURE 5-11	TOPOLOGY – UNIVERSAL REPEATER	39
FIGURE 5-12	REPEATER (RANGE EXTENDER) – UNIVERSAL REPEATER	40
FIGURE 5-13	TOPOLOGY – WDS REPEATER	40
FIGURE 5-14	REPEATER (RANGE EXTENDER) – WDS REPEATER	41
FIGURE 5-15	REPEATER (RANGE EXTENDER) – SURVEY	42
FIGURE 5-16	REPEATER (RANGE EXTENDER) – AP LIST	43
FIGURE 5-17	REPEATER (RANGE EXTENDER) – FINISH SETTING	43
FIGURE 5-18	REPEATER (RANGE EXTENDER) – SECURITY	44
FIGURE 5-19	REPEATER (RANGE EXTENDER) – STATUS	44
FIGURE 5-20	OPERATION MODE - BRIDGE WITH AP	45
FIGURE 5-21	TOPOLOGY - BRIDGE WITH AP	46

FIGURE 5-22	BRIDGE WITH AP – SURVEY	47
FIGURE 5-23	BRIDGE WITH AP – AP LIST	47
FIGURE 5-24	BRIDGE WITH AP – FINISH SETTING	48
FIGURE 5-25	BRIDGE WITH AP – STATUS	48
FIGURE 5-26	WIRELESS - CLIENT	49
FIGURE 5-27	TOPOLOGY – CLIENT MODE	50
FIGURE 5-28	CLIENT – SURVEY	50
FIGURE 5-29	CLIENT – AP LIST	51
FIGURE 5-30	CLIENT – FINISH SETTING	51
FIGURE 5-31	CLIENT – STATUS	52
FIGURE 5-32	WPS	52
FIGURE 5-33	HARDWARE WPS BUTTON	53
FIGURE 5-34	SOFTWARE WPS BUTTON	53
FIGURE 5-35	ADD A NEW DEVICE	54
FIGURE 5-36	NEW DEVICE CONNECT SUCCESSFULLY	55
FIGURE 5-37	THE NETWORK MENU	56
FIGURE 5-38	LAN SETTINGS	56
FIGURE 5-39	WIRELESS MENU	58
FIGURE 5-40	WIRELESS SETTINGS	58
FIGURE 5-41	WIRELESS SECURITY	60
FIGURE 5-42	WIRELESS SECURITY – WEP	61
FIGURE 5-43	WIRELESS SECURITY - WPA/WPA2 ENTERPRISE	62
FIGURE 5-44	WIRELESS SECURITY - WPA/WPA2 PERSONAL	63
FIGURE 5-45	WIRELESS MAC ADDRESS FILTERING	65
FIGURE 5-46	ADD OR MODIFY WIRELESS MAC ADDRESS FILTERING ENTRY	66
FIGURE 5-47	WIRELESS MAC ADDRESS FILTERING	67
FIGURE 5-48	WIRELESS ADVANCED	68
FIGURE 5-49	ANTENNA ALIGNMENT	69
FIGURE 5-50	THROUGHPUT MONITOR	70
FIGURE 5-51	THE AP ATTACHED WIRELESS STATIONS	71
FIGURE 5-52	THE DHCP MENU	72
FIGURE 5-53	DHCP SETTINGS	73
FIGURE 5-54	DHCP CLIENTS LIST	74
FIGURE 5-55	ADDRESS RESERVATION	75
FIGURE 5-56	ADD AN ADDRESS RESERVATION ENTRY	76
FIGURE 5-57	MODIFY AN ADDRESS RESERVATION ENTRY	76
FIGURE 5-58	THE SYSTEM TOOLS MENU	77
FIGURE 5-59	THE SYSTEM TOOLS MENU	78
FIGURE 5-60	TIME SETTINGS	79
FIGURE 5-61	DIAGNOSTIC TOOLS	81

FIGURE 5-62	DIAGNOSTIC RESULTS	83
FIGURE 5-63	PING WATCH DOG	84
FIGURE 5-64	FIRMWARE UPGRADE	85
FIGURE 5-65	RESTORE FACTORY DEFAULT	86
FIGURE 5-66	BACKUP & RESTORE CONFIGURATION	86
FIGURE 5-67	REBOOT THE AP	87
FIGURE 5-68	PASSWORD	88
FIGURE 5-69	SYSTEM LOG	89
FIGURE 5-70	MAIL ACCOUNT SETTINGS	90
FIGURE 5-71	STATISTICS	92
FIGURE 6-1	WIRELESS ZERO CONFIGURATION	94
FIGURE 6-2	VIEW AVAILABLE WIRELESS NETWORKS	94
FIGURE 6-3	CHOOSE A WIRELESS NETWORK	95
FIGURE 6-4	ENTER THE ENCRYPTION KEY	95
FIGURE 6-5	WIRELESS NETWORK CONNECTED	96
FIGURE 6-6	WLAN AUTOCONFIG	96
FIGURE 6-7	WLAN AUTOCONFIG WINDOW	97
FIGURE 6-8	WLAN AUTOCONFIG – TYPE THE NETWORK SECURITY KEY	98
FIGURE 6-9	WLAN AUTOCONFIG – CONNECTING	98
FIGURE 6-10	WLAN AUTOCONFIG – CONNECTED	99
FIGURE 6-11	THE AIRPORT NETWORK CONNECTION ICON	99
FIGURE 6-12	THE AIRPORT NETWORK CONNECTION MENU	100
FIGURE 6-13	THE AIRPORT NETWORK CONNECTION – ENTER PASSWORD	100
FIGURE 6-14	THE AIRPORT NETWORK CONNECTION – CONNECTED	101
FIGURE 6-15	THE WI-FI SETTINGS IN IPHONE/IPOD TOUCH/IPAD	101
FIGURE 6-16	GENERAL SETTINGS	102
FIGURE 6-17	GENERAL SETTINGS – NOT CONNECTED	102
FIGURE 6-18	GENERAL SETTINGS – WI-FI ON	103
FIGURE 6-19	GENERAL SETTINGS – ENTER PASSWORD	104
FIGURE 6-20	GENERAL SETTINGS – WI-FI NETWORK CONNECTED	104

Chapter 1. Product Introduction

1.1 Package Contents

The following items should be contained in the package:

- WNAP-1110 Wireless Range Extender
- Power Adapter
- Passive PoE Injector
- 4dBi Antenna x1
- Quick Installation Guide
- CD-ROM (User's Manual included)

If there is any item missing or damaged, please contact the seller immediately.

1.2 Product Description

PLANET 802.11n Wireless Access Point (WNAP-1110) features 802.11n radio with 1T1R MIMO technology. It is also backward compliant with 802.11b/g standard. Compared with simple Access Point, the WNAP-1110 offers more powerful, flexible capability for wireless client to access Internet.

The WNAP-1110 provides multiple operation modes including AP (Multi-SSID), Client, Repeater, Universal Repeater (Range Extender), and WDS Bridge (Point to Point and Point to Multiple Points) that can play different roles in different situations. To secure the wireless communications, the WNAP-1110 supports 64/128/152-bit WEP encryption, WiFi Protected Access (WPA/WPA2, WPA-PSK/WPA2-PSK). Furthermore, in order to simplify the security settings, the WNAP-1110 supports WPS configuration with the PBC/PIN type. Your whole wireless network can be secured within a few seconds.

Being an Access Point, the WNAP-1110 supports the VLAN function to allow multiple SSIDs (Four sets of SSID and tagging VID) to access Internal VLAN topology via the VLAN Switch function. Moreover, WMM capability can provide better service to selected traffic or application, which utilizes the network usage. In the wireless security aspect, the WNAP-1110 supplies MAC address filtering which prevents possible hackers attack.

The WNAP-1110 provides a total solution for the Small Office and the SOHO users. With the MIMO 11n wireless technology, it's easy to combine the wireless devices with the existing wired network.

1.3 Product Features

- **Standard Compliant Hardware Interface**
 - 150Mbps wireless transmission rate with MIMO technology
 - IEEE 802.11n, 802.11b/g standard compliant
 - 1 x 10/100Base-TX Port with Passive PoE supported
- **Secure Network Connection**
 - Advanced security: 64/128/152-bit WEP, WPA/WPA2, WPA-PSK/WPA2-PSK (TKIP/AES encryption) and 802.1X Radius Authentication
 - Easy setup secure wireless connection by one-touch WPS (Wi-Fi Protected Setup) button
 - Supports MAC address filtering
 - Supports multiple SSIDs to allow users to access different networks through a single AP
- **Wireless Network Range Extender**
 - Multiple wireless modes: AP, WDS, Repeater, Universal Repeater, Client
 - Supports WMM (Wi-Fi Multimedia), wireless QoS
 - Supports wireless roaming
- **Easy Installation & Management**
 - Flexible deployment with passive PoE/PD supported
 - Web-based UI and Quick Setup Wizard for easy configuration
 - SNMP-based management interface

1.4 Product Specifications

Product	WNAP-1110 150Mbps 802.11n Wireless Range Extender	
Hardware Specifications		
Interface	PoE LAN Port:	1 x 10/100Mbps Auto MDI/MDI-X RJ45 port ※ Passive PoE/PD Port
PoE	Passive PoE (Up to 30 meters)	
Antenna	Detachable 4dBi antenna x1	
Button	WPS Button	Press the WPS button on the front panel of the device.
	Reset Button	Press for about 5 seconds to reset the device to factory default.
LED Indicators	PWR/SYS/LAN/WLAN/WPS LED	
Material	Plastic	
Dimensions (W x D x H)	174 x 110 x 23 mm	
Weight	250g	
Power Requirements	9V DC, 0.85A or Passive PoE	
Power Consumption	2W (max.)	
Wireless interface Specifications		
Standard	Compliance with IEEE 802.11b/g/n	
Frequency Band	2.4~2.4835GHz	
Extended Frequency	DSSS	
Modulation Type	DBPSK, DQPSK, QPSK, CCK and OFDM (BPSK/ QPSK/ 16-QAM/ 64-QAM)	
Data Transmission Rates	IEEE 802.11n: up to 150Mbps(Dynamic)	
	IEEE 802.11g: 54/48/36/24/18/12/9/6Mbps (Dynamic)	
	IEEE 802.11b: 11/5.5/2/1Mbps (Dynamic)	
Frequency Band	America/ FCC: 2.414~2.462GHz (11 Channels)	
	Europe/ ETSI: 2.412~2.472GHz (13 Channels)	
	Japan/ TELEC: 2.412~2.484GHz (14 Channels)	
Channel Width	20 or 40MHz	
Transmission Distance	Indoor up to 100m	
	Outdoor up to 300m (it is limited to the environment)	
Max. RF Power (Intentional Radiator)	IEEE 802.11b: 18dBm	
	IEEE 802.11g: 15dBm	
	IEEE 802.11n: 15dBm	
Receive Sensitivity	130M: -70dBm@10% PER	
	108M: -72dBm@10% PER	
	54M: -74dBm@10% PER	
	11M: -86dBm@8% PER	
	6M: -91dBm@10% PER	
	1M: -91dBm@8% PER	
Wireless Management Features		
Wireless Modes	■ AP (Multi-SSID)	

	<ul style="list-style-type: none"> ■ WDS ■ Repeater (WDS+AP) ■ Universal Repeater (AP+Client) ■ Client
Encryption Security	WEP (64/128/152-bit) WPA-PSK (TKIP) / WPA2-PSK (AES) WPA (TKIP) / WPA2 (AES) 802.1x Authentication
Wireless Security	Enable/Disable SSID Broadcast
	Wireless LAN ACL (Access Control List) MAC filtering
Wireless Advanced	AP Isolation: Enable it to isolate each connected wireless client to let them cannot access mutually.
	Supports 802.11e WMM (Wi-Fi Multimedia)
Max. Supported Clients	Wired: 32 Wireless: 20
System Management	Web-based (HTTP) management interface
	Supports SNMP v1/v2
	Supports Planet Smart Discovery
	Supports Scheduling Reboot
	System Log

Chapter 2. Hardware Installation

Please follow the instructions below to build the wireless network connection between WNAP-1110 and your computers.

2.1 Hardware Description

2.1.1 The Front Panel

The front panel provides a simple interface monitoring the AP. [Figure 2-1](#) shows the front panel of WNAP-1110.

Front Panel

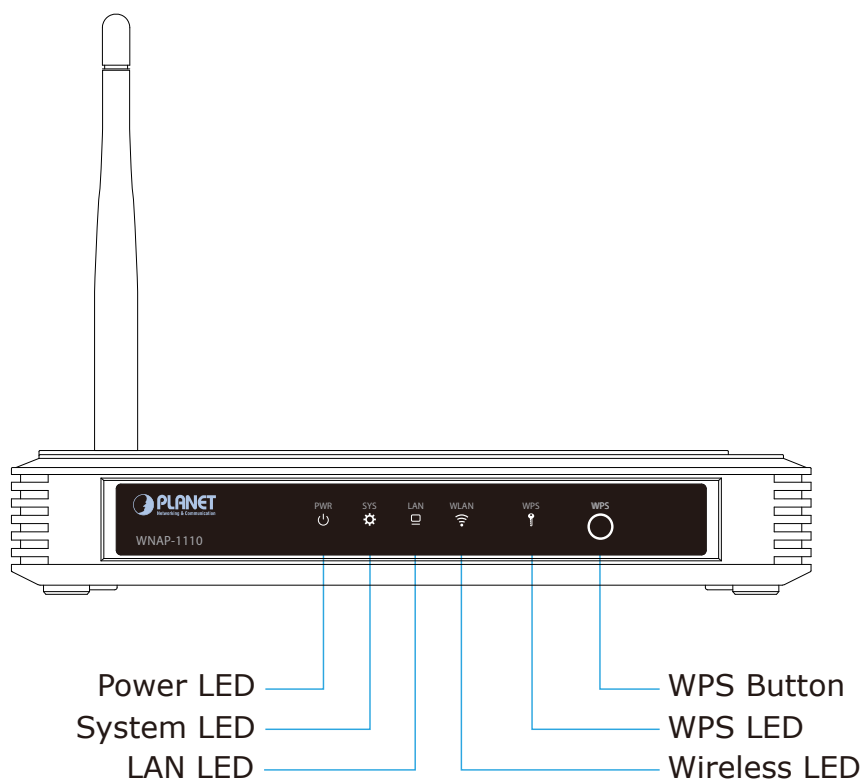


Figure 2-1 WNAP-1110 Front Panel

LED definition

Object	Color	State	Description
PWR	Green	On	Device power on
		Off	Device power off
SYSTEM	Green	On	Device is initialising
		Flash	The device is working properly
		Off	The device has a system error
LAN	Green	On	There is a device linked to the corresponding port but no activity
		Flash	Packets are transmitting or receiving
		Off	LAN port is not connected

WLAN	Green	Flash	The Wireless function is enabled
		Off	The Wireless function is disabled
WPS	Green	On	A wireless device has been successfully added to the network by WPS function.
		Slow Flash	A wireless device is connecting to the network by WPS function. This process will last in the first 2 minutes.
		Quick Flash	A wireless device failed to be added to the network by WPS function.

2.1.2 The Rear Panel

The rear panel of the WNAP-1110 consists of buttons, connection port, and power connector. Figure 2-2 shows the hardware interface of WNAP-1110.

Rear Panel

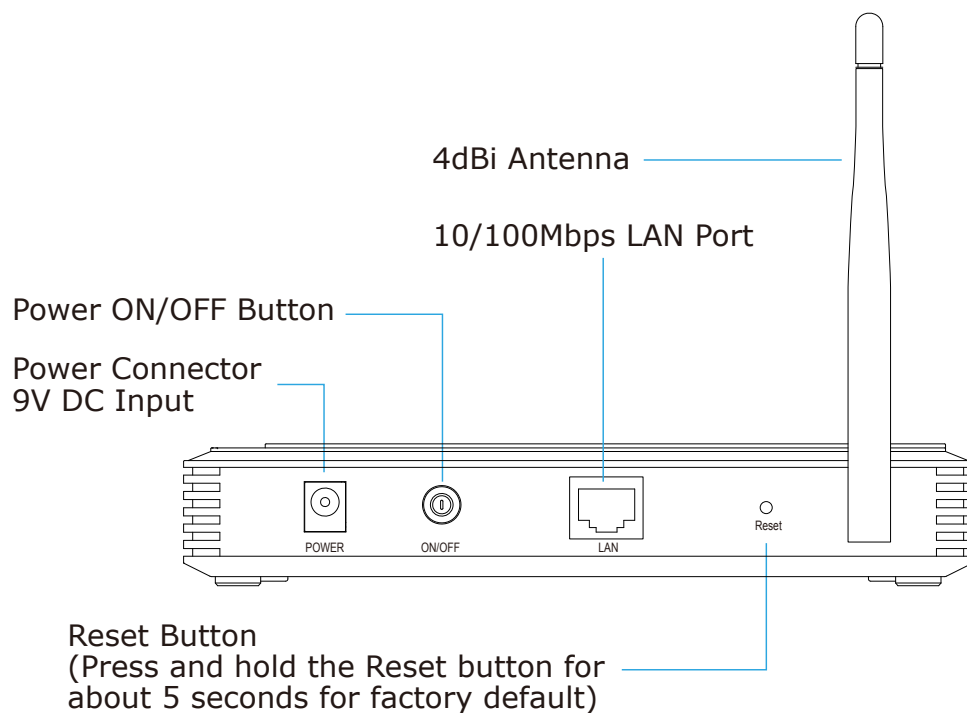


Figure 2-2 WNAP-1110 Rear Panel

Button definition

Object	Description
WPS	Press the button for less than 3 seconds for WPS configuration.
Power ON/OFF	Press the button to power on the device.
Reset	Press and hold the button for about 5 seconds to the factory default setting.

H/W Interface definition

Object	Description
Antenna	Detachable 4dBi Antenna with RP-SMA (male) connector.
LAN (Passive PoE)	10/100Mbps RJ-45 port, Auto MDI/ MDI-X & Passive PoE supported Connect LAN port to the PoE injector to power on the device.
LAN	10/100Mbps RJ-45 port, Auto MDI/ MDI-X Connect this port to the LAN port of the Router or Ethernet Switch.
Power Connector	Connect this port to the 9V DC power adapter to power on the device.



The WNAP-1110 supports only 9VDC power adapter or passive POE injector (**RJ45 pin 4, 5: +; pin 7, 8: -**). It cannot work with IEEE 802.3af PSE for its power source.

At the same time, either 9V DC adapter from the DC-jack or passive PoE injector from the UTP LAN port can be connected to the device at one time. Use of two power sources will damage the device permanently.

Chapter 3. Connecting the AP

3.1 System Requirements

- ◆ Broadband Internet Access Service (DSL/Cable/Ethernet connection)
- ◆ One DSL/Cable Modem that has an RJ-45 connector (not necessary if the AP is connected directly to the Ethernet.)
- ◆ PCs with a working Ethernet adapter and an Ethernet cable with RJ-45 connectors
- ◆ Subscribers can utilize Windows 98/ME, NT4.0, 2000/XP, Windows Vista / Win 7, MAC OS 9 or later, Linux, UNIX or other platforms compatible with **TCP/IP** protocols
- ◆ The above PC is installed with a Web browser



It is recommended to use Internet Explore 7.0 or above to access the AP.

3.2 Installing the AP

Before installing the AP, make sure your PC is connected to the Internet through the broadband service successfully at this moment. If there is any problem, please contact your local ISP. After that, please install the AP according to the following steps. Don't forget to pull out the power plug and keep your hands dry.

Step 1. Power off your PC, Cable/DSL Modem, and the AP.

Step 2. Locate an optimum location for the AP. The best place is usually at the center of your wireless network.

Step 3. Adjust the direction of the antenna. Normally, upright is a good direction.

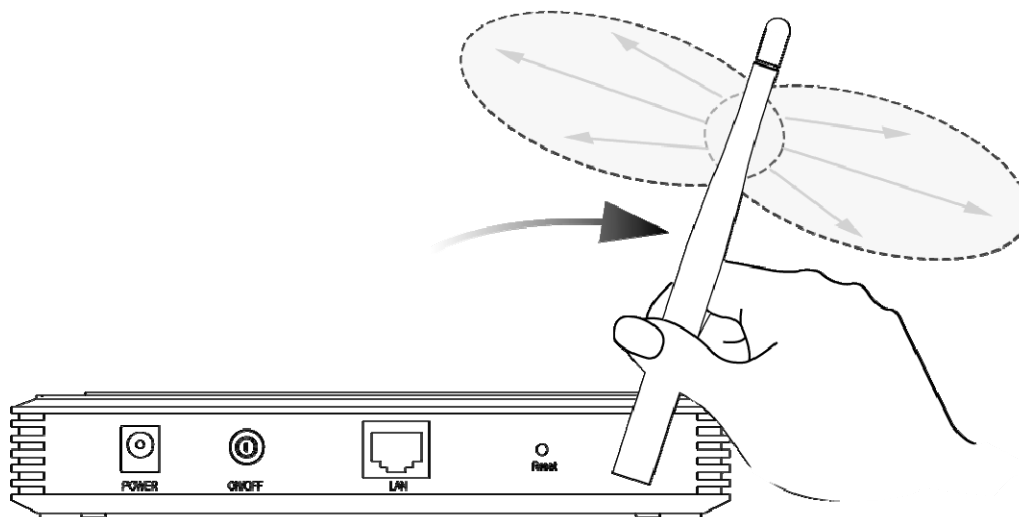


Figure 3-1 Adjust the direction of the antenna

Step 4. Connect the Power Source to the WNAP-1110. Only choose one of the following methods for the suitability of AP's location; otherwise, it will cause damage to the WNAP-1110.

Method A -- Hard to find the power socket

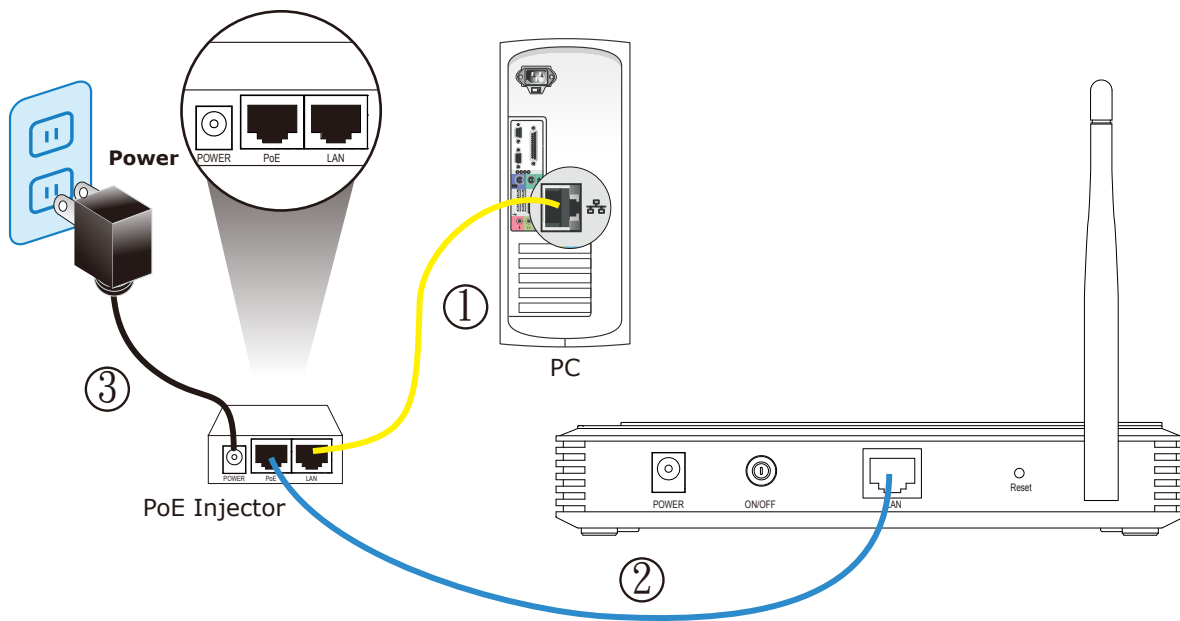
- (1) Connect the Ethernet cable to the LAN port of the PC, and plug the other end of the Ethernet cable into the LAN port of the PoE injector.
- (2) Use another Ethernet cable (**8-wire patch cable**) to connect the LAN port of the WNAP-1110 and the PoE port of the PoE Injector.

※ **The 8-wire patch cable should not exceed 30 meters in length.**

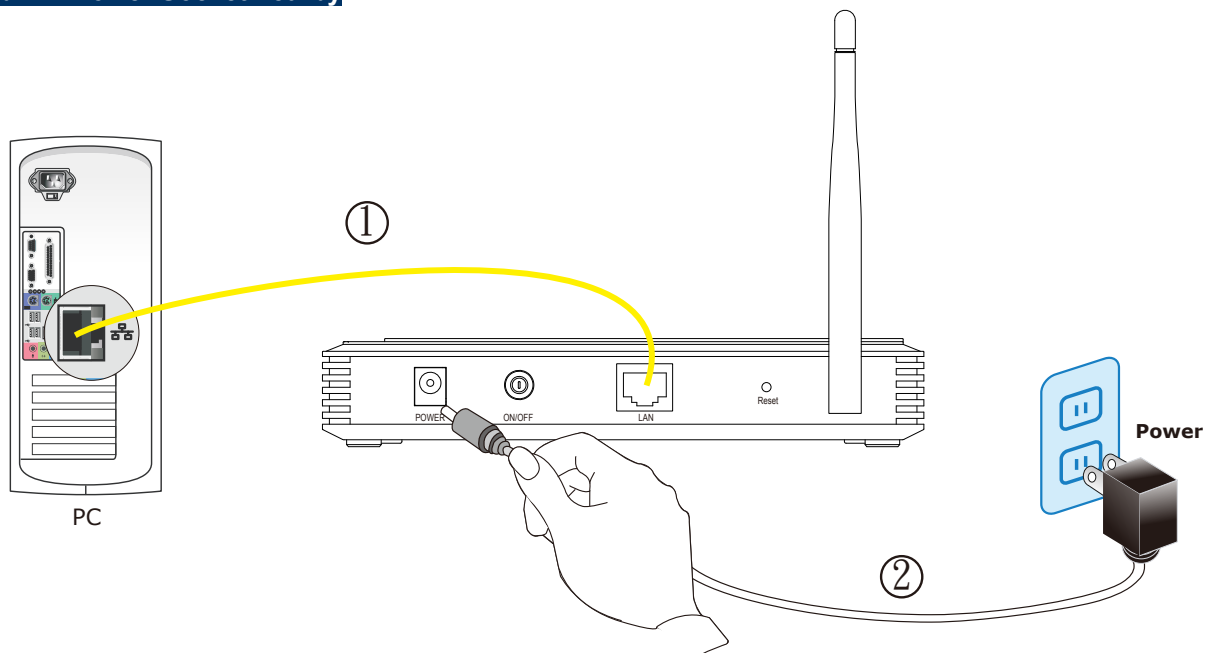
- (3) Connect the power adapter to the DC port of the PoE injector, and plug the other end of the power adapter into an electrical outlet.

Method B -- Power Socket nearby

- (1) Connect the Ethernet cable to the LAN port of the PC, and plug the other end of the Ethernet cable into the LAN port of the WNAP-1110.
- (2) Connect the power adapter into the POWER port of the WNAP-1110 in the rear panel, and plug the other end of the power adapter into an electrical outlet.

Method A – Hard to find the power socket**Figure 3-2** Hardware Installation of the WNAP-1110 Wireless AP**Caution**

Check connection before powering on. Wrong connection may cause device malfunction, say, your PC or other Ethernet device.

Method B – Power Socket nearby**Figure 3-3** Hardware Installation of the WNAP-1110 Wireless AP

Step 5. Connect the power adapter to the power socket on the AP, and the other end into an electrical outlet. Then power on the AP.

Step 6. Power on your PC and Cable/DSL Modem.

Chapter 4. Quick Installation Guide

This chapter will show you how to configure the basic functions of your AP using **Quick Setup** within minutes.



A computer with wired Ethernet connection to the Wireless AP is required for the first-time configuration.

4.1 Manual Network Setup - TCP/IP Configuration

The default IP address of the WNAP-1110 is **192.168.1.253**. And the default Subnet Mask is 255.255.255.0. These values can be changed as you want. In this guide, we use all the default values for description.

Connect the WNAP-1110 to your PC with an Ethernet cable plugging in LAN port on one side and in LAN port of PC on the other side. Please power on the WNAP-1110 by PoE switch through the PoE port.

In the following sections, we'll introduce how to install and configure the TCP/IP correctly in **Windows 7**. And the procedures in other operating systems are similar. First, make sure your Ethernet adapter is working, and refer to the Ethernet adapter manual if needed.

4.1.1 Configuring the IP Address Manually

Summary:

- Set up the TCP/IP Protocol for your PC.
 - Configure the network parameters. The IP address is 192.168.1.xxx (if the default IP address of the WNAP-1110 is 192.168.1.253, and the DSL router is 192.168.1.254, the "xxx" can be configured to any number from 1 to 252), and Subnet Mask is 255.255.255.0.
- 1 Select **Use the following IP address** radio button, and then configure the IP address of the PC.
 - 2 For example, as the default IP address of the WNAP-1110 is 192.168.1.253 and the DSL router is 192.168.1.254, you may choose from 192.168.1.1 to 192.168.1.252.

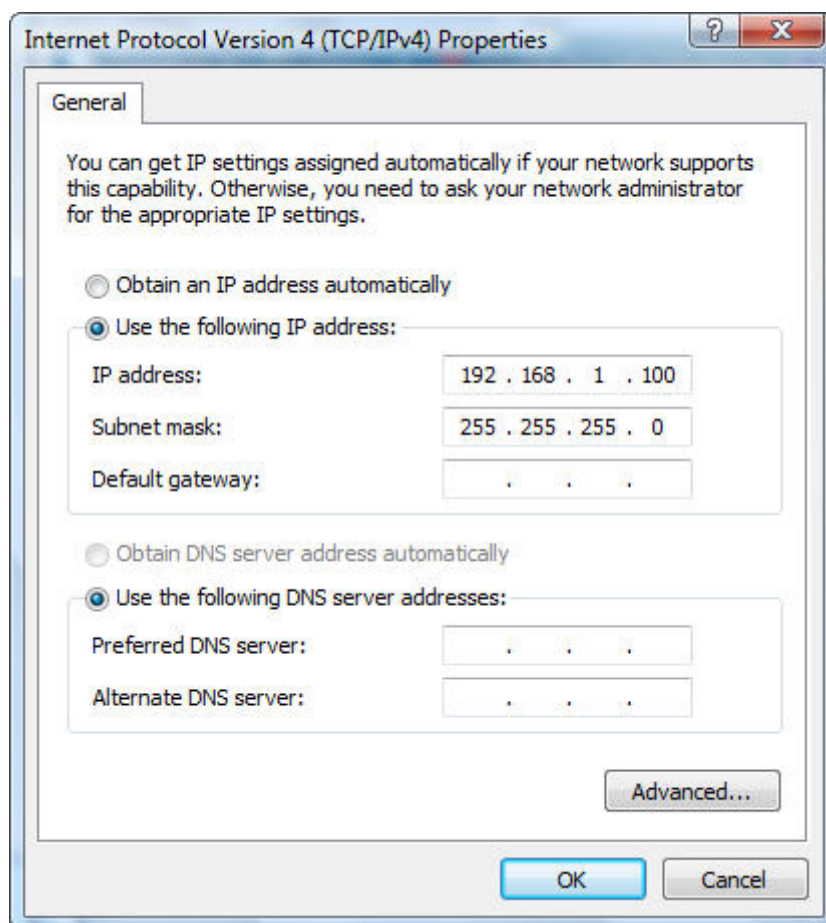


Figure 4-1 TCP/IP Setting

Now click **OK** to save your settings.

Now, you can run the Ping command in the **command prompt** to verify the network connection between your PC and the AP. The following example is in **Windows 7** OS. Please follow the steps below:

1. Click on **Start > Run**.
2. Type "**cmd**" in the Search box.

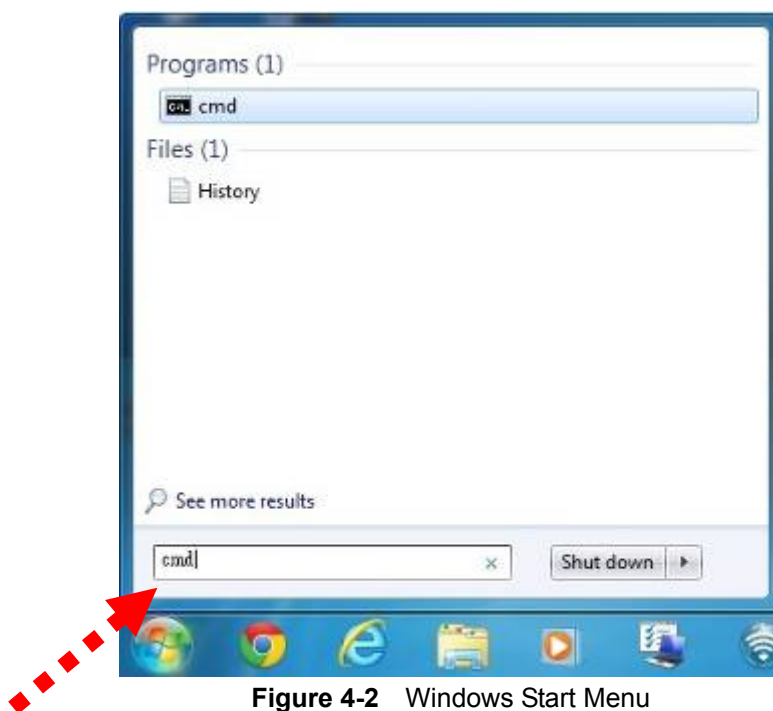


Figure 4-2 Windows Start Menu

3. Open a command prompt, and type ping **192.168.1.253**, and then press **Enter**.
 - ◆ If the result displayed is similar to [Figure 4-3](#), it means the connection between your PC and the AP has been established well.

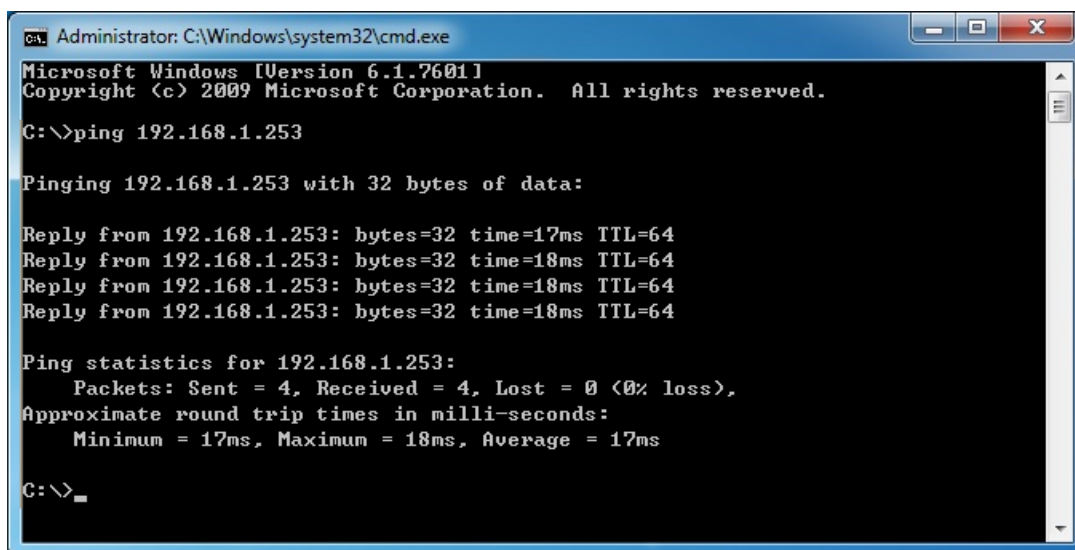


Figure 4-3 Successful result of Ping command

- ◆ If the result displayed is similar to [Figure 4-4](#), it means the connection between your PC and the AP has failed.



```
C:\Administrator: C:\Windows\system32\cmd.exe
Microsoft Windows [Version 6.1.7601]
Copyright (c) 2009 Microsoft Corporation. All rights reserved.

C:\Documents and Settings\user>ping 192.168.1.253

Pinging 192.168.1.253 with 32 bytes of data:

Destination host unreachable.
Destination host unreachable.
Destination host unreachable.
Destination host unreachable.

Ping statistics for 192.168.1.253:
    Packets: Sent = 4, Received = 0, Lost = 4 (100% loss),

C:\Documents and Settings\user>
```

Figure 4-4 Failed result of Ping command

If the address is 0.0.0.0, check your adapter installation, security settings, and the settings on your AP. Some firewall software programs may block a DHCP request on newly installed adapters.

4.2 Starting Setup in Web UI

It is easy to configure and manage the WNAP-1110 with web browser.

Step 1. To access the configuration utility, open a web-browser and enter the default IP address <http://192.168.1.253> in the address field of the browser.

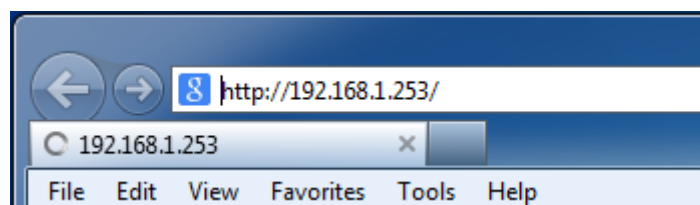


Figure 4-5 Login the AP

After a moment, a login window will appear. Enter **admin** for the User Name and Password, both in lower case letters. Then click the **OK** button or press the **Enter** key.



Figure 4-6 Login Window

Default User Name: **admin**

Default Password: **admin**

Default SSID: **WNAP-1110**

Default Wireless Password: **PIN code** (refer to the label on the bottom of the WNAP-1110.)



Note

If the above screen does not pop up, it may mean that your web-browser has been set to a proxy. Go to Tools menu>Internet Options>Connections>LAN Settings, in the screen that appears, cancel the Using Proxy checkbox, and click OK to finish it.

Step 2. After successfully login, you can click the **Quick Setup** to quickly configure your AP.

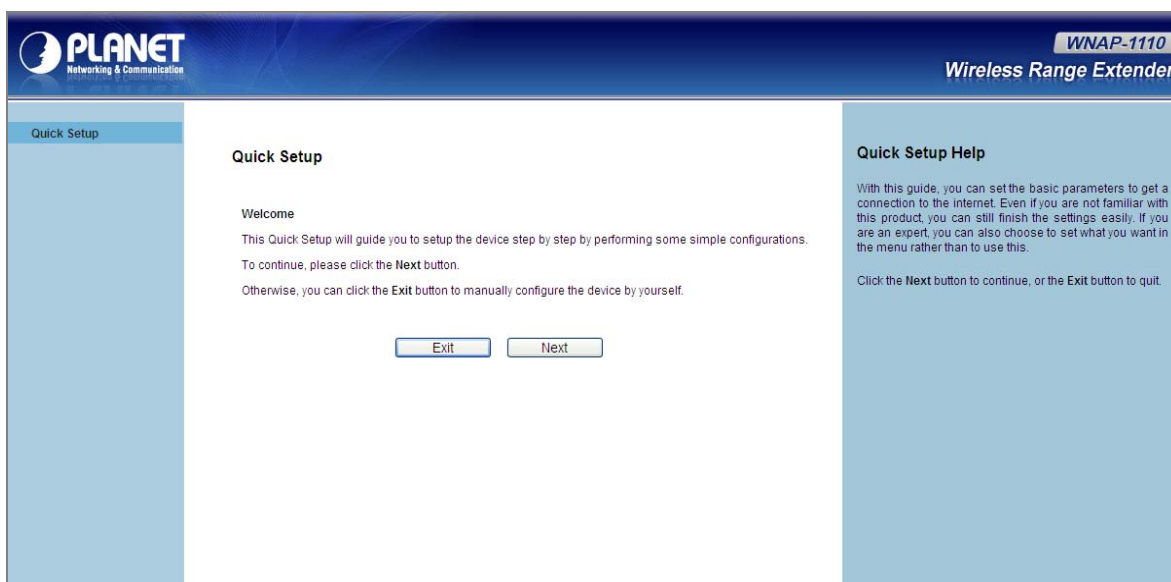


Figure 4-7 WNAP-1110 Quick Setup

Step 3. Select the proper operation mode according to your needs.

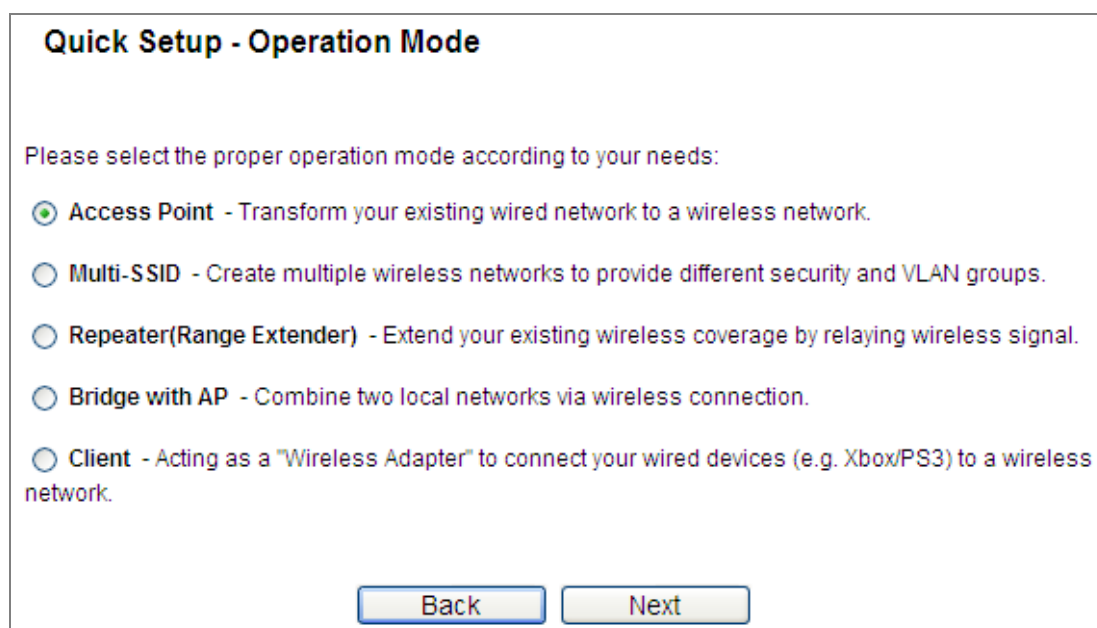


Figure 4-8 Quick Setup – Operation Mode

Click **Next**, and then **Wireless Setting** page will appear, shown in **Figure 4-9**.

Step 4. Enter a string of up to 32 characters into the SSID field. Then select one of the supported security options and configure the password for your wireless network.

Quick Setup - Wireless

Wireless Network Name (SSID): WNAP-1110

Wireless Security Mode: Most Secure(WPA/WPA2-PSK)

Wireless Password:

You can enter ASCII characters between 8 and 63 or Hexadecimal characters between 8 and 64.

Back Next

Figure 4-9 Quick Setup – Wireless

Step 5. Click **Next** to continue. The **Network settings** page will appear as shown in **Figure 4-10**. You can configure the IP parameters of LAN on this page.

Quick Setup - Network

DHCP Server: ☒ Disable ☐ Enable

In most of the cases your root AP/router has enabled DHCP server function, we highly recommended that you disable DHCP server function on this device to void any unpredictable problems.

IP Address: 192.168.1.253

Subnet Mask: 255.255.255.0

We recommend you configure this AP with the same IP subnet and subnet mask, but different IP address from your root AP/Router.

Change the login account: ☒ NO ☐ YES

Back Next

Figure 4-10 Quick Setup – Network

Step 6. Click the **Next** button. You will then see the **Finish** page.

Quick Setup - Finish

Confirm the configuration you have set. If anything is wrong, please go BACK to reset.
When confirmed, please click Finish/Reboot button to make all configurations take effect.

Wireless Setting

Operation Mode: Access Point

Wireless Network Name(SSID): WNAP-1110

Wireless Security Mode: Most Secure(WPA/WPA2-PSK)

Wireless Password: 12345678

Network Setting

Login Account: admin/ admin

LAN IP Address: 192.168.1.253

DHCP Server: Disabled

Save these settings as a text file for future reference

Figure 4-11 Quick Setup – Finish

Step 7. Once the basic configuration is done, connect the WNAP-1110 with the xDSL modem/ router through the Ethernet cable. Then, you will be able to surf the Internet using the wireless client through the WNAP-1110.

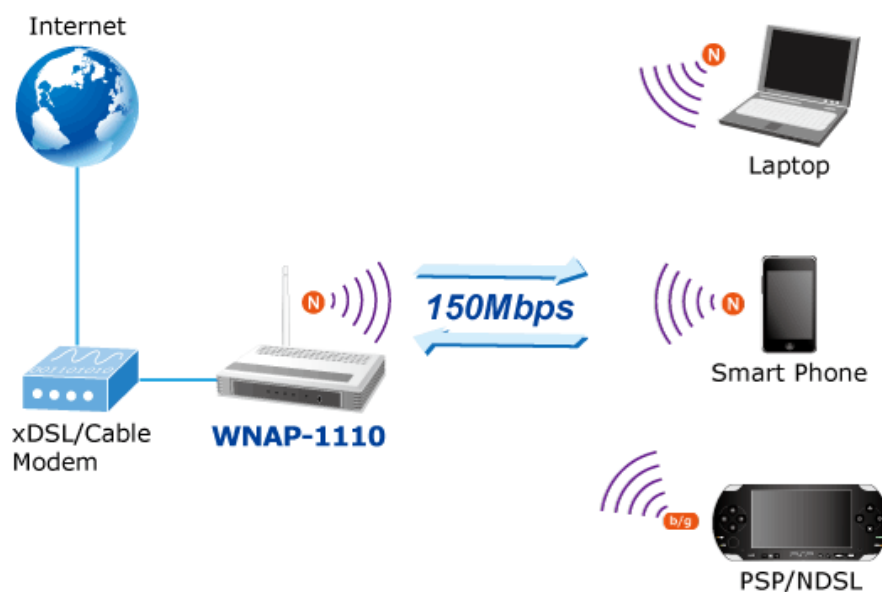


Figure 4-12 Basic Wireless Internet Connection

Chapter 5. Configuring the AP

This chapter delivers a detailed presentation of AP's functionalities and features under main menu below, allowing you to manage the AP with ease.

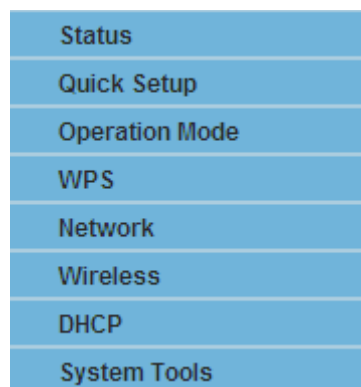


Figure 5-1 Main Menu

5.1 Status

On this page, you can view information about the current running status of the WNAP-1110, including LAN interface, wireless interface settings and status, and firmware version information.

Status

Firmware Version: 3.7.2 Build 081231 Rel.0n
Hardware Version: WNAP-1110 v2 00000000

Wired

MAC Address: 00-30-4F-AB-53-62
IP Address: 192.168.1.253
Subnet Mask: 255.255.255.0

Wireless

Operation Mode: Access Point
Name (SSID): WNAP-1110
Channel: Auto (Current channel 6)
Mode: 11bgn mixed
Channel Width: Automatic
MAC Address: 00-30-4F-AB-53-62

Traffic Statistics

	Received	Sent
Bytes:	81196	256071
Packets:	601	861

System Up Time: 0 days 00:07:46

Refresh

Figure 5-2 Status

This section allows you to view the AP's basic info listed below:

Object	Description
Firmware Version	Displays the current firmware version.
Hardware Version	Displays the current hardware version.
MAC Address	Displays AP's LAN MAC address.
IP Address	Displays LAN IP address.

Subnet Mask	Displays LAN subnet mask.
Operation Mode	Displays AP's current operation mode.
Name (SSID)	Displays AP's SSID.
Channel	Displays AP's current channel.
Mode	Displays AP's current wireless mode.
Channel Width	Displays AP's current wireless channel width.
MAC Address	Displays AP's Wireless MAC address.
Traffic Statistics	Displays the AP's traffic statistics.
System Up Time	Displays the System Up Time.

5.2 Quick Setup

Please refer to [Chapter 4.2 Starting Setup in Web UI](#).

5.3 Operation Mode

Operation Mode

Please select the proper operation mode according to your needs:

- ☒ **Access Point** - Transform your existing wired network to a wireless network.
- ☐ **Multi-SSID** - Create multiple wireless networks to provide different security and VLAN groups.
- ☐ **Repeater(Range Extender)** - Extend your existing wireless coverage by relaying wireless signal.
- ☐ **Bridge with AP** - Combine two local networks via wireless connection.
- ☐ **Client** - Acting as a "Wireless Adapter" to connect your wired devices (e.g. Xbox/PS3) to a wireless network.

Save

Figure 5-3 Operation Mode

The page includes the following fields:

Object	Description
AP	In this mode, the device will act as a wireless central hub for your wireless LAN clients, giving a wireless extension for your current wired network.
Multi-SSID	In this mode, the device can create up to 4 wireless networks labeled with different SSIDs and assign each SSID with different security or VLAN, especially for the situation when the various access policies and functions are required.
Repeater(Range Extender)	In this mode, the device can copy and reinforce the existing wireless signal to extend the coverage of the signal, especially for a large space to eliminate signal-blind corners.
Bridge with AP	In this mode, the device can be used to combine multiple local networks together to the same one via wireless connections, especially for a home or office where separated networks can't be connected easily together with a cable.
Client	In this mode, the device can be connected to another device via Ethernet port and act as an adaptor to grant your wired devices access to a wireless network, especially for a Smart TV, Media Player, or game console only with an Ethernet port.

Be sure to click the **Save** button to save your settings on this page.



The device will reboot automatically after you click the **Save** button.

When you change the operation mode to **Client/Repeater**, WPS function will stay disabled. Please manually enable this function if needed when you switch back to **Access Point/Multi-SSID/Bridge mode**.

5.3.1 Operation Mode – Access Point

Choose menu “**Quick Setup** → **Next** → **Access Point**”, or “**Operation Mode** → **Access Point**” to configure the device as a general wireless access point.

Wireless Settings - Access Point

Wireless Network Name: (Also called the SSID)

Region:

Warning: Ensure you select a correct country to comply local law. Incorrect settings may cause interference.

Channel:

Mode:

Channel Width:

☒ Enable Wireless Radio

☒ Enable SSID Broadcast

Figure 5-4 Wireless – AP Mode

For the definition of each field on this page, please refer to [Chapter 5.6.1 Wireless Setting](#).

➤ Example of quickly set up a wireless network using **AP Mode**:

To configure each wireless parameter, please go to the “**Wireless** → **Wireless Settings**” page.

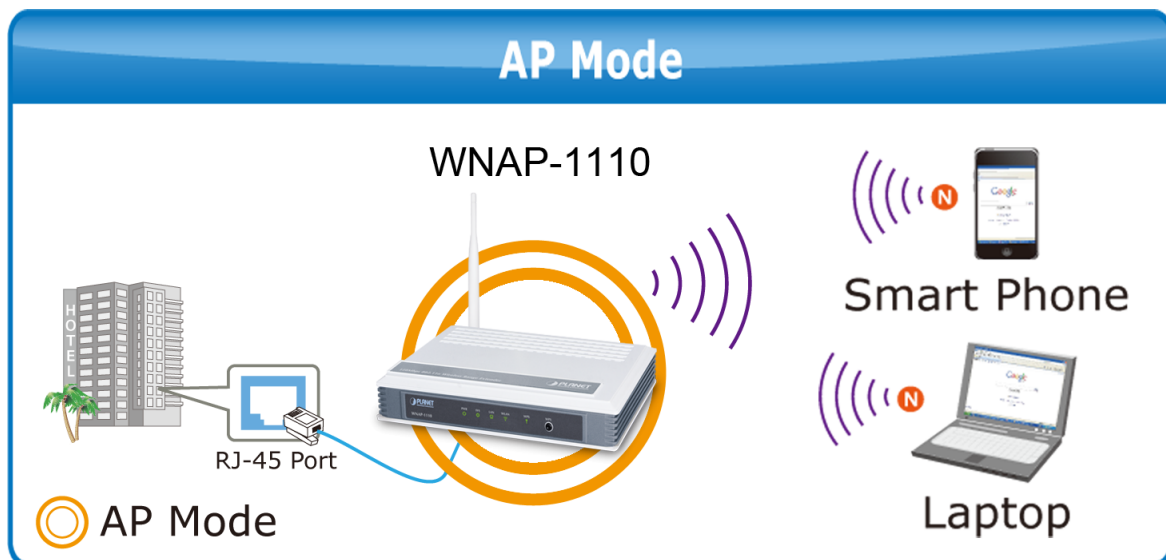


Figure 5-5 Topology – AP Mode

Step 1. Create an easy-to-remember name for your wireless network, write it into **Wireless Network Name (SSID)**.

Step 2. Select the **Most Secure (WPA/WPA2-PSK)** encryption mode and enter a password below to prevent unauthorized access to your AP.

Step 3. Click **Next** and you will then come to the **Network Setting** page for further configuration.

Step 4. Refer to Step 5 of [Chapter 4.2](#) to continue the setting. Then, refer to [Chapter 6](#) to quickly connect to a wireless Network.

5.3.2 Operation Mode – Multi-SSID

Choose menu “**Quick Setup** → **Next** → **Multi-SSID**”, or “**Operation Mode** → **Multi-SSID**” to configure the device as a general wireless access point with multiple SSIDs.

Figure 5-6 Operation Mode – Multi-SSID

The page includes the following fields:

Object	Description
Enable VLAN	Check this box and then you can change the VLAN ID of each SSID. If you want to configure the Guest and Internal networks on VLAN, the switch you are using must support VLAN. As a prerequisite step, configure a port on the switch for handling VLAN tagged packets as described in the IEEE802.1Q standard, and enable this field.
SSID (1-4)	Up to 4 SSIDs for each BSS can be entered in the field like SSID1 ~ SSID4. The name can be up to 32 characters. The same name (SSID) must be assigned to all wireless devices in your network. If Enable VLAN is checked, the wireless stations connecting to SSID of a different VLANID cannot communicate with each

	other.
VLAN ID (1-4)	Provide a number between 1 and 4095 for VLAN. This will cause the AP to send packets with VLAN tags. The switch connecting with the AP must support VLAN IEEE802.1Q frames. The wireless stations connecting to the SSID of a specified VLANID can communicate with the PC connecting to the port with the same VLANID on the Switch.
Channel	Determines the operating frequency to be used. It is not necessary to change the wireless channel unless you notice interference problems with another nearby access point.
Mode	<p>This field determines the wireless mode which the device works on.</p> <p>11b only - Only 802.11b wireless stations can connect to the AP.</p> <p>11g only - Only 802.11g wireless stations can connect to the AP.</p> <p>11n only - Only 802.11n wireless stations can connect to the AP.</p> <p>11bg mixed - Both 802.11b and 802.11g wireless stations can connect to the AP.</p> <p>11bgn mixed - All 802.11b, 802.11g and 802.11n wireless stations can connect to the AP.</p>
Channel Width	Determines the channel width to be used. It is unnecessary to change the default value unless required.
Enable Wireless Radio	Select or deselect this check box to allow or deny wireless stations to access the AP.
Enable SSID Broadcast	Select or deselect this check box to allow or deny the AP to broadcast its name (SSID) on the air. If it's allowed, when wireless clients survey the local area for wireless networks to associate with, they will detect the SSID broadcast by the AP.

You are suggested to implement Multi-SSID function with a switch that supports Tag VLAN feature.

➤ Example of how to configure **Multi-SSID Mode**. Please take the following steps:

To configure each wireless parameter, please go to the “**Wireless** → **Wireless Settings**” page.

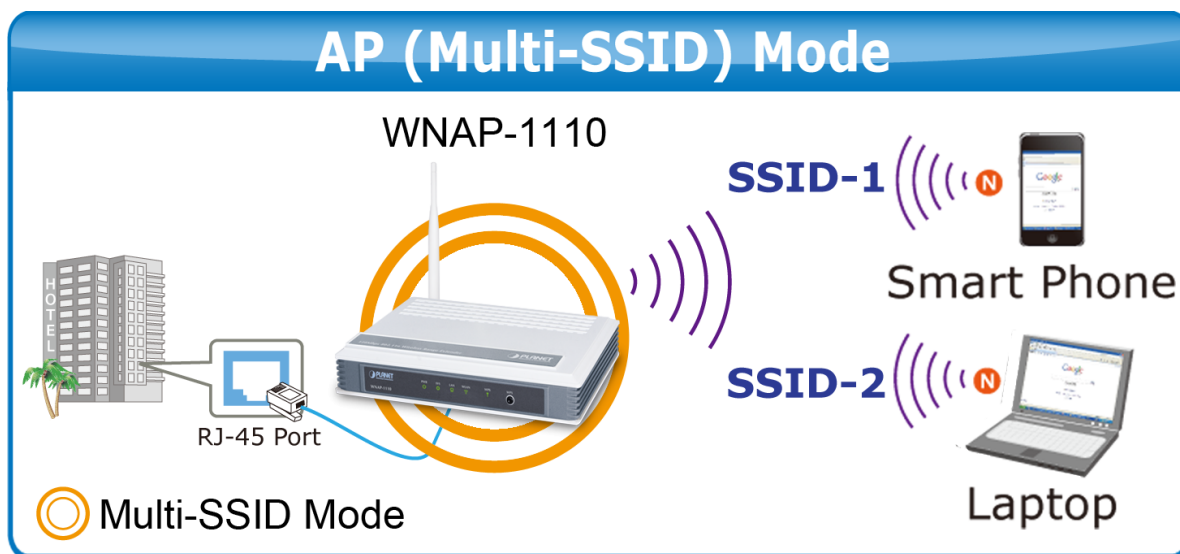


Figure 5-7 Topology – Multi-SSID

1. Configuring the Access Point

Wireless Settings - Multi-SSID

☒ Enable VLAN

SSID1:	<input type="text" value="WNAP-1110"/>	VLAN ID:	<input type="text" value="1"/>
<input checked="" type="checkbox"/> SSID2:	<input type="text" value="WNAP-1110_2"/>	VLAN ID:	<input type="text" value="1"/>
<input checked="" type="checkbox"/> SSID3:	<input type="text" value="WNAP-1110_3"/>	VLAN ID:	<input type="text" value="1"/>
<input checked="" type="checkbox"/> SSID4:	<input type="text" value="WNAP-1110_4"/>	VLAN ID:	<input type="text" value="1"/>

Region: ▼

Warning: Ensure you select a correct country to comply local law. Incorrect settings may cause interference.

Channel: ▼

Mode: ▼

Channel Width: ▼

☒ Enable Wireless Radio

☒ Enable SSID Broadcast

Figure 5-8 Multi-SSID – Enable VLAN

Step 1. Select the checkbox “**Enable VLAN**” to enable VLAN function for this access point.

Step 2. Configure the SSID and its corresponding VLAN ID. The detailed parameters are shown as the figure above.

Step 3. STA1, STA2, STA3 and STA4 join to the wireless network with SSID1, SSID2, SSID3 and SSID4, respectively.

Step 4. Click **Save** to apply the current security settings for the selected SSID.



1. The wireless STAs, joined to the network with different VLAN IDs, cannot communicate with each other, for example, STA1 and STA2.
2. The wireless STAs, joined to the network with the same VLAN ID, can communicate with each other, for example, STA1 and STA3.
3. All wireless STAs can log on to the Web management page of the WNAP-1110 and manage the access point, for example, STA1, STA2, STA3 and STA4.
4. All the packets received in the wired network from the wireless STA will be added a corresponding VLAN Tag of the wireless STA, unless the VLAN ID of the wireless network is set to 1.

2. Configuring the Switch

Step 1. Enable 802.1Q Tag VLAN function on the switch.

Step 2. Make sure the Untag frames are forwarded.

The following table shows the detailed configuration of the switch

Port	VLAN ID	PVID	Egress Rule	Processing mode of Untag Frames
1	1	1	Untag	Forwarding
2	2	2	Untag	Forwarding
3	3	3	Untag	Forwarding
4	4	4	Untag	Forwarding
5	Port 5 belongs to all VLANs	1	Tag	Forwarding

Step 3. Connect PC1, PC2, PC3 and PC4 to port1, port2, port3 and port4 of the switch, respectively. The corresponding VLAN IDs of the four ports are 1, 2, 3 and 4.

Step 4. Configure port5 of the switch to be the member of VLAN1, VLAN2, VLAN3 and VLAN4 and connect it to the LAN port of the WNAP-1110.

Step 5. Configure the VLAN ID of the PC that can log on to the Web management page of the WNAP-1110 via

the LAN port equal to the PVID of port 5.

3. Verifying the communication status after the above configuration is completed.

Step 1. If VLAN ID of the PC connected to the switch is different from the VLAN ID of the wireless STA, the two cannot communicate with each other, for example, PC1 and STA2.

Step 2. If the PC connected to the switch and the wireless STA have the same VLAN ID, the two can communicate with each other, for example, PC2 and STA2.

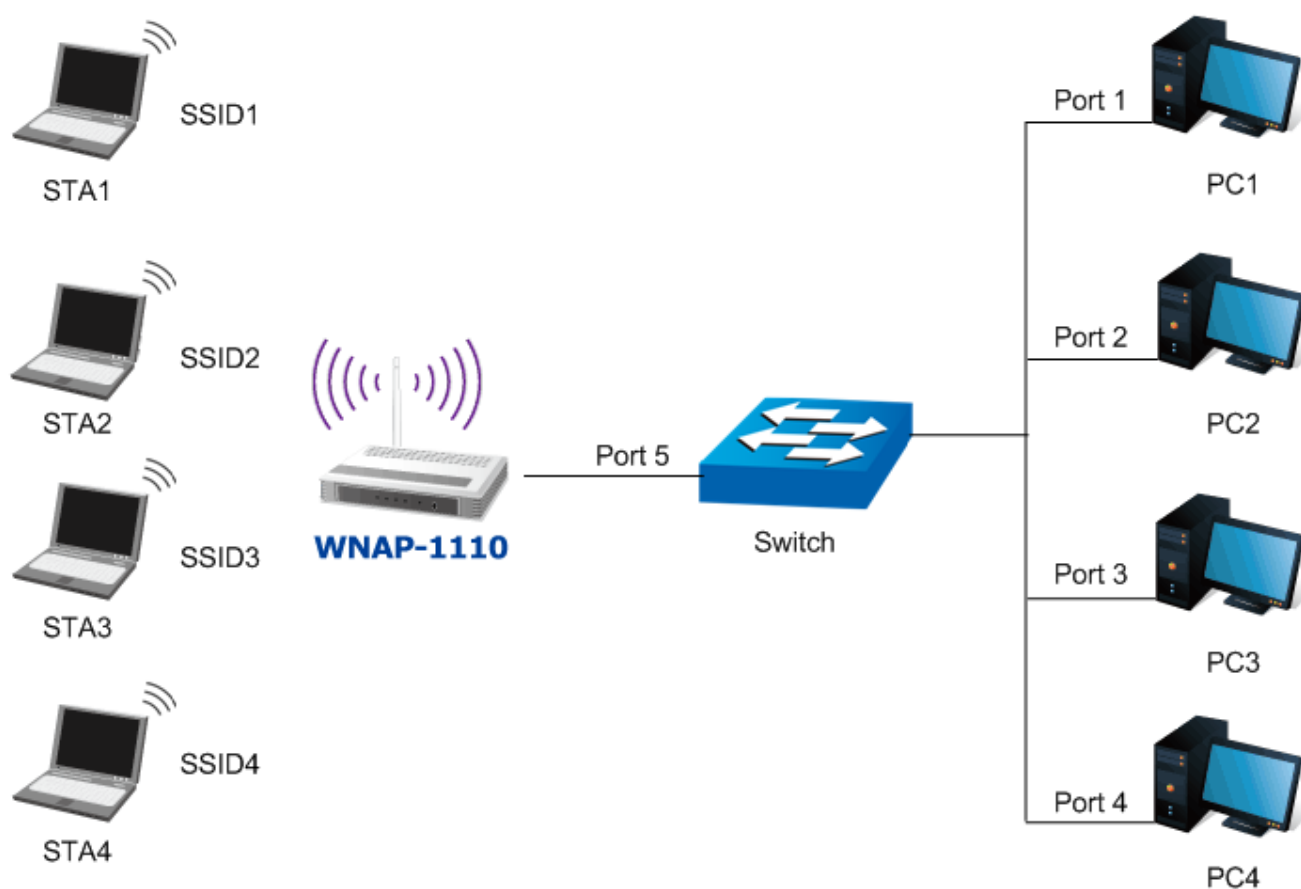


Figure 5-9 Multi-SSID – VLAN Topology



If the LAN port of the WNAP-1110 is not connected to a switch but directly to a PC,

1. The PC can directly log on to the Web management page of the WNAP-1110 and manage the access point.
2. Only the wireless STA with its VLAN ID set to 1 can communicate with the wired PC.

5.3.3 Operation Mode – Repeater (Range Extender)

Choose menu “**Quick Setup** → **Next** → **Repeater (Range Extender)**”, or “**Operation Mode** → **Repeater (Range Extender)**” to configure the device as a general wireless access point with multiple SSIDs.

In this mode, the product can extend the coverage of another wireless Access Point or Router. The universal repeater mode is for the wireless Access Point or Router which does not support WDS function.

Operation Mode

Please select the proper operation mode according to your needs:

- ☐ Access Point - Transform your existing wired network to a wireless network.
- ☐ Multi-SSID - Create multiple wireless networks to provide different security and VLAN groups.
- ☒ Repeater(Range Extender) - Extend your existing wireless coverage by relaying wireless signal.
- ☐ Bridge with AP - Combine two local networks via wireless connection.
- ☐ Client - Acting as a "Wireless Adapter" to connect your wired devices (e.g. Xbox/PS3) to a wireless network.

Figure 5-10 Operation Mode - Repeater (Range Extender)

1. Universal Repeater

This mode allows the AP with its own BSS to relay data to a root AP to which it is associated with WDS disabled. The wireless repeater relays signal between its stations and the root AP for greater wireless range.

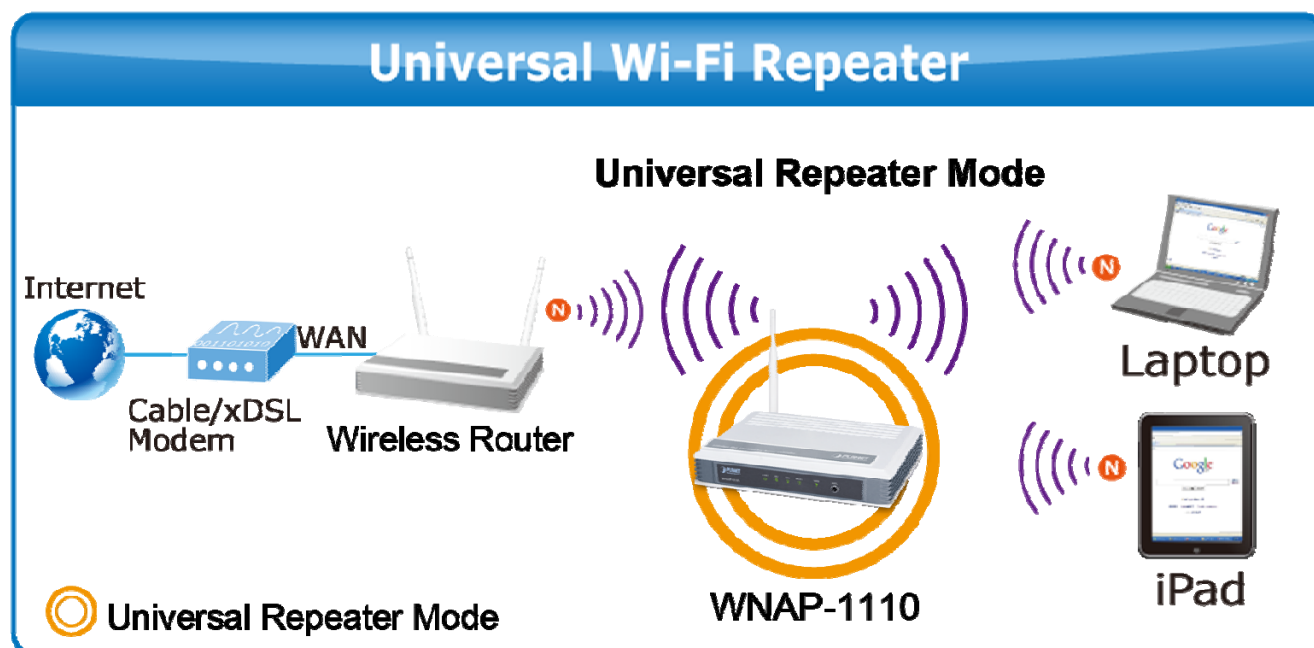


Figure 5-11 Topology – Universal Repeater

Wireless Settings - Repeater

Repeater Mode: ☒ Universal Repeater ☐ WDS Repeater

Wireless Name of Root AP: (also called SSID)

MAC Address of Root AP:

Region: ▼

Warning: Ensure you select a correct country to comply local law. Incorrect settings may cause interference.

Channel Width: ▼

☒ Enable Wireless Radio

Figure 5-12 Repeater (Range Extender) – Universal Repeater

2. WDS Repeater

This mode allows the AP with its own BSS to relay data to a root AP to which it is associated with WDS enabled. The wireless repeater relays signal between its stations and the root AP for greater wireless range.

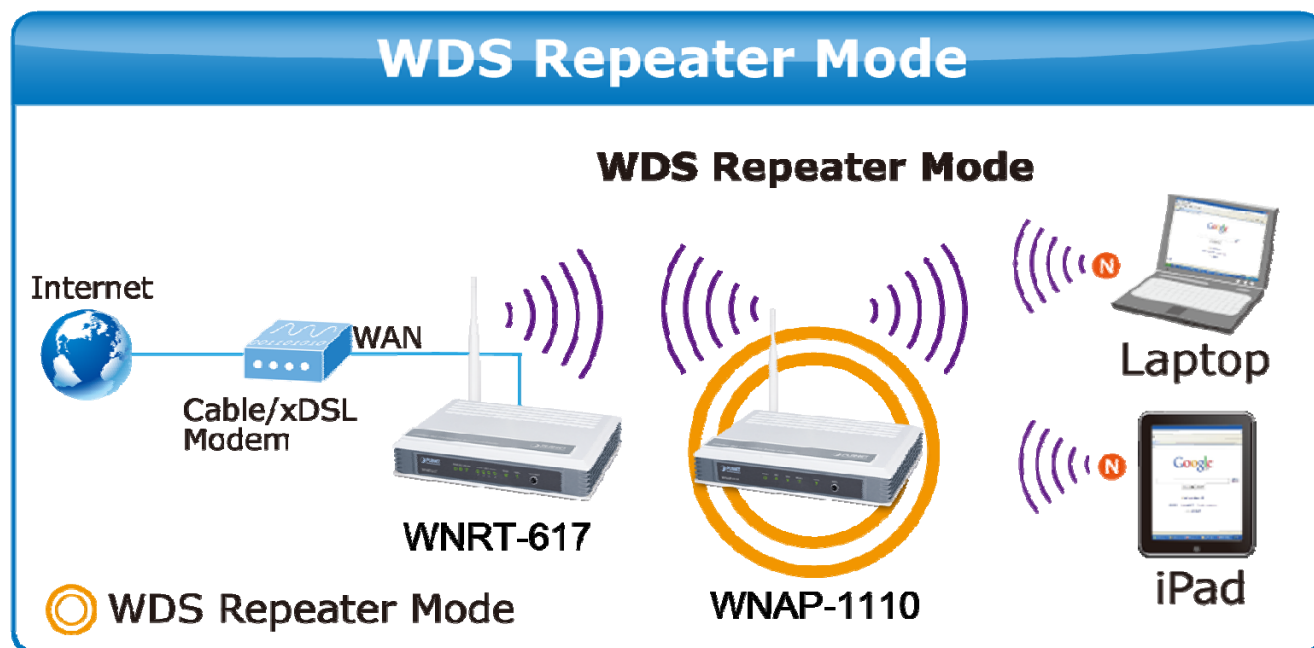


Figure 5-13 Topology – WDS Repeater

Figure 5-14 Repeater (Range Extender) – WDS Repeater

The page includes the following fields:

Object	Description
Repeater Mode	<p>Choose mode for repeater.</p> <ul style="list-style-type: none"> • WDS Repeater - In WDS Repeater mode, the AP with WDS enabled will relays data to an associated root AP. AP function is enabled meanwhile. The wireless repeater relays signal between its stations and the root AP for greater wireless range. Please input the MAC address of root AP in the field "MAC of AP". • Universal Repeater - In Universal Repeater mode, the AP with WDS disabled will relays data to an associated root AP. AP function is enabled meanwhile. The wireless repeater relays signal between its stations and the root AP for greater wireless range. Please input the MAC address of root AP in the field "MAC of AP".
Wireless Name of Root AP	The SSID of the AP your device is going to connect to as a client. You can also use the search function to select the SSID to join.
MAC Address of Root AP	The BSSID of the AP your device is going to connect to as a client. You can also use the search function to select the BSSID to join.
Survey	Click this button; you can search the AP which runs in the current channel.
Region	Select your region from the pull-down list. This field specifies the region where the wireless function of the device can be used. It may be illegal to use the wireless

	function of the device in a region other than one of those specified in this field. If your country or region is not listed, please contact your local government agency for assistance.
Channel Width	The bandwidth of the wireless channel.
Enable Wireless Radio	The wireless radio of the AP can be enabled or disabled to allow or deny wireless stations to access. If enabled, the wireless stations will be able to access the AP, otherwise, wireless stations will not be able to access the AP.

- Example of how to configure **Repeater Mode**. The procedure of Universal Repeater and WDS Repeater modes are the same. Please take the following steps:

To configure each wireless parameter, please go to the “**Wireless** → **Wireless Settings**” page.

Step 1. Select one of the Repeater Modes, and then click “**Survey**”.

Wireless Settings - Repeater

Repeater Mode: ☒ Universal Repeater ☐ WDS Repeater

Wireless Name of Root AP: (also called SSID)

MAC Address of Root AP:

Survey

Region: ▼

Warning: Ensure you select a correct country to comply local law. Incorrect settings may cause interference.

Channel Width: ▼

☒ Enable Wireless Radio

Save

Figure 5-15 Repeater (Range Extender) – Survey

Step 2. Click “**Connect**” to choose the root AP from the list to repeat the signal. If the root AP is not listed in the table, click “**Refresh**” to update the list.

AP List

AP Count: 10

ID	BSSID	SSID	Signal	Channel	Security	Choose
1	00-30-4F-A8-FF-FF	AP	81dB	1	WPA2-PSK	Connect
2	00-30-4F-CE-94-63	HITRON-5f-3	7dB	1	WPA/WPA2-PSK	Connect
3	00-30-4F-62-84-28	LinFamily	15dB	1	WPA/WPA2-PSK	Connect
4	00-30-4F-4A-C7-84	Luster-tw	8dB	1	WPA-PSK	Connect
5	00-30-4F-B8-56-76	baal	10dB	1	WPA/WPA2-PSK	Connect
6	00-30-4F-21-D5-F0	Air3GII	16dB	6	WPA/WPA2-PSK	Connect
7	00-30-4F-29-92-98	10F	7dB	6	WPA-PSK	Connect
8	00-30-4F-08-71-B4	HP-Print-B4-LaserJet 1102	1dB	6	OFF	Connect
9	00-30-4F-F0-CB-D9	NEXUS	38dB	6	WPA2-PSK	Connect
10	00-30-4F-E1-DA-29	bluepobo	4dB	6	WPA2-PSK	Connect

[Back](#) [Refresh](#)

Figure 5-16 Repeater (Range Extender) – AP List

Step 3. The selected AP's wireless name and MAC address will be automatically filled in the relevant fields.

Wireless Settings - Repeater

Repeater Mode: ☒ Universal Repeater ☐ WDS Repeater

Wireless Name of Root AP: (also called SSID)

MAC Address of Root AP:

[Survey](#)

Region: ▼

Warning: Ensure you select a correct country to comply local law. Incorrect settings may cause interference.

Channel Width: ▼

☒ Enable Wireless Radio

The change of wireless config will not take effect until the Device reboots, please [click here](#) to reboot.

[Save](#)

Figure 5-17 Repeater (Range Extender) – Finish Setting

Step 4. Go to **Wireless Security** page to configure the repeater's security as the same as the root AP's.

Wireless Security

☐ Disable Security

☒ WPA/WPA2 - Personal(Recommended)

Version:

Encryption:

Password:

(You can enter ASCII characters between 8 and 63 or Hexadecimal characters between 8 and 64)

Group Key Update Period: (in second, minimum is 30, 0 means no update)

☐ WEP

Type:

WEP Key Format:

Key Selected	WEP Key	Key Type
Key 1: <input checked="" type="radio"/>	<input type="text"/>	<input type="text" value="Disabled"/>
Key 2: <input type="radio"/>	<input type="text"/>	<input type="text" value="Disabled"/>
Key 3: <input type="radio"/>	<input type="text"/>	<input type="text" value="Disabled"/>
Key 4: <input type="radio"/>	<input type="text"/>	<input type="text" value="Disabled"/>

Figure 5-18 Repeater (Range Extender) – Security

Step 5. You can go to **Status** page to check the repeater's signal.

Wireless

Operation Mode: Universal Repeater

Signal: 64dB

Name (SSID): AP

Channel: 1

Channel Width: 40MHz

MAC Address: 00-30-4F-AB-53-62

Figure 5-19 Repeater (Range Extender) – Status

5.3.4 Operation Mode – Bridge with AP

Choose menu “**Quick Setup** → **Next** → **Bridge with AP**”, or “**Operation Mode** → **Bridge with AP**” to configure the device as a general wireless access point with multiple SSIDs.

In this mode, the product can extend the coverage of another wireless Access Point or Router. The universal repeater mode is for the wireless Access Point or Router which does not support WDS function.

Operation Mode

Please select the proper operation mode according to your needs:

- ☐ Access Point - Transform your existing wired network to a wireless network.
- ☐ Multi-SSID - Create multiple wireless networks to provide different security and VLAN groups.
- ☐ Repeater(Range Extender) - Extend your existing wireless coverage by relaying wireless signal.
- ☒ Bridge with AP - Combine two local networks via wireless connection.
- ☐ Client - Acting as a "Wireless Adapter" to connect your wired devices (e.g. Xbox/PS3) to a wireless network.

Figure 5-20 Operation Mode - Bridge with AP

The page includes the following fields:

Object	Description
Wireless Name of Remote AP	The SSID of the AP your device is going to connect to as a client. You can also use the search function to select the SSID to join.
MAC Address of Remote AP	The BSSID of the AP your device is going to connect to as a client. You can also use the search function to select the BSSID to join.
Survey	Click Survey button, you can search the AP which runs in the current channel.
Key type	This option should be chosen according to the AP's security configuration. It is recommended that the security type is the same as your AP's security type
Password	If the AP your device is going to connect needs password, you need to fill the password in this blank.
Local Wireless Name	Enter a value of up to 32 characters. The same Name (SSID) must be assigned to all wireless devices in your network.
Region	Select your region from the pull-down list. This field specifies the region where the wireless function of the AP can be used. It may be illegal to use the wireless function of the AP in a region other than one of those specified in this filed. If your country or region is not listed, please contact your local government agency for assistance.
Channel	This field determines which operating frequency will be used. It is not necessary to change the wireless channel unless you notice interference problems with another nearby access point.

Mode	This field determines the wireless mode which the AP works on.
Channel Width	The bandwidth of the wireless channel.
Enable Wireless Radio	The wireless radio of the AP can be enabled or disabled to allow or deny wireless stations to access. If enabled, the wireless stations will be able to access the AP, otherwise, wireless stations will not be able to access the AP.
Enable SSID Broadcast	If you select the Enable SSID Broadcast checkbox, the AP will broadcast its name (SSID) on the air.
Disable Local Wireless Access	If you select the Disable Local Wireless Access checkbox, the AP will deny wireless stations to access, allowing only wired network while bridging with remote AP.

- Example of how to configure **Bridge with AP Mode**. Please take the following steps:
To configure each wireless parameter, please go to the "**Wireless → Wireless Settings**" page.

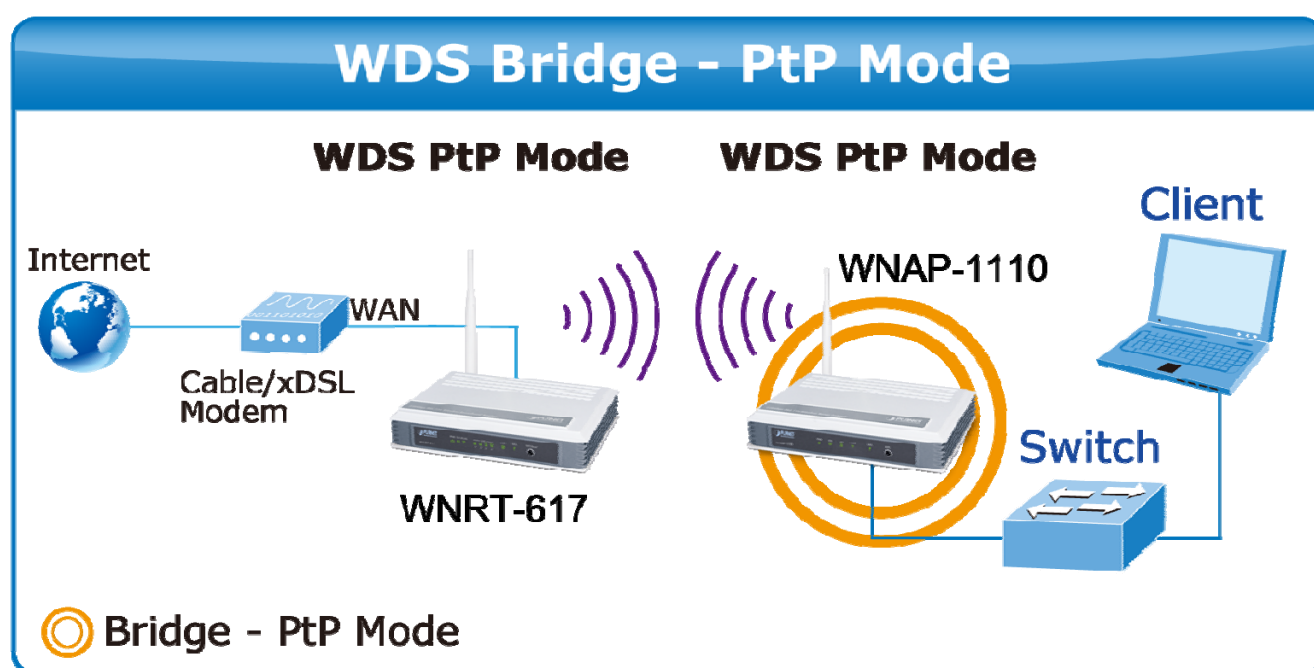


Figure 5-21 Topology - Bridge with AP

Step 1. Click "**Survey**".

Wireless Settings - Bridge with AP

Wireless Bridge Setting

Wireless Name of Remote AP: (also called SSID)

MAC Address of Remote AP: Example: 00-30-4F-11-22-33

Survey

Key type:

Figure 5-22 Bridge with AP – Survey

Step 2. Click “**Connect**” to choose the root AP from the list. If the root AP is not listed in the table, click “**Refresh**” to update the list.

AP List

AP Count: 10

ID	BSSID	SSID	Signal	Channel	Security	Choose
1	00-30-4F-A8-FF-FF	AP	81dB	1	WPA2-PSK	Connect
2	00-30-4F-CE-94-63	HITRON-5f-3	7dB	1	WPA/WPA2-PSK	Connect
3	00-30-4F-62-84-28	LinFamily	15dB	1	WPA/WPA2-PSK	Connect
4	00-30-4F-4A-C7-84	Luster-tw	8dB	1	WPA-PSK	Connect
5	00-30-4F-B8-56-76	baal	10dB	1	WPA/WPA2-PSK	Connect
6	00-30-4F-21-D5-F0	Air3GII	16dB	6	WPA/WPA2-PSK	Connect
7	00-30-4F-29-92-98	10F	7dB	6	WPA-PSK	Connect
8	00-30-4F-08-71-B4	HP-Print-B4-LaserJet 1102	1dB	6	OFF	Connect
9	00-30-4F-F0-CB-D9	NEXUS	38dB	6	WPA2-PSK	Connect
10	00-30-4F-E1-DA-29	bluepobo	4dB	6	WPA2-PSK	Connect

[Back](#) [Refresh](#)

Figure 5-23 Bridge with AP – AP List

Step 3. The selected AP's wireless name and MAC address will be automatically filled in the relevant fields. Select the root AP's security key type and enter the password to finish the setting.

Wireless Settings - Bridge with AP

Wireless Bridge Setting

Wireless Name of Remote AP: (also called SSID)

MAC Address of Remote AP: Example: 00-30-4F-11-22-33

Key type: ▼

Password:

Local Wireless AP Setting

Local Wireless Name: (also called SSID)

Region: ▼

Warning: Ensure you select a correct country to comply local law. Incorrect settings may cause interference.

Channel: ▼

Mode: ▼

Channel Width: ▼

☒ Enable Wireless Radio

☒ Enable SSID Broadcast

☐ Disable Local Wireless Access

Figure 5-24 Bridge with AP – Finish Setting

Step 4. Click “**Save**” to save and apply the setting.

Step 5. You can go to **Status** page to check the repeater’s signal.

Wireless	
Operation Mode:	Bridge with AP
Signal:	59dB
Remote AP(BSSID):	00-30-4F-A8-FF-FF
Channel:	1
Mode:	11bgn mixed
Channel Width:	40MHz
MAC Address:	00-30-4F-AB-53-62

Figure 5-25 Bridge with AP – Status

5.3.5 Operation Mode – Client

Choose menu “**Quick Setup** → **Next** → **Client**”, or “**Operation Mode** → **Client**” to configure the device as a general wireless access point with multiple SSIDs.

In this mode, the product can extend the coverage of another wireless Access Point or Router. The universal repeater mode is for the wireless Access Point or Router which does not support WDS function.

Wireless Settings - Client

Wireless Name of Root AP: (also called SSID)

MAC Address of Root AP:

Region: ▼

Warning: Ensure you select a correct country to comply local law. Incorrect settings may cause interference.

Channel Width: ▼

☒ Enable Wireless Radio

Figure 5-26 Wireless - Client

The page includes the following fields:

Object	Description
Wireless Name of Root AP	The SSID of the AP your device is going to connect to as a client. You can also use the search function to select the SSID to join.
MAC Address of Root AP	The BSSID of the AP your device is going to connect to as a client. You can also use the search function to select the BSSID to join.
Survey	Click Survey button, you can search the AP which runs in the current channel.
Region	Select your region from the pull-down list. This field specifies the region where the wireless function of the AP can be used. It may be illegal to use the wireless function of the AP in a region other than one of those specified in this filed. If your country or region is not listed, please contact your local government agency for assistance.
Channel Width	The bandwidth of the wireless channel.
Enable Wireless Radio	The wireless radio of the AP can be enabled or disabled to allow or deny wireless

stations to access. If enabled, the wireless stations will be able to access the AP, otherwise, wireless stations will not be able to access the AP.

➤ Example of how to configure **Client Mode**. Please take the following steps:

To configure each wireless parameter, please go to the "**Wireless** → **Wireless Settings**" page.

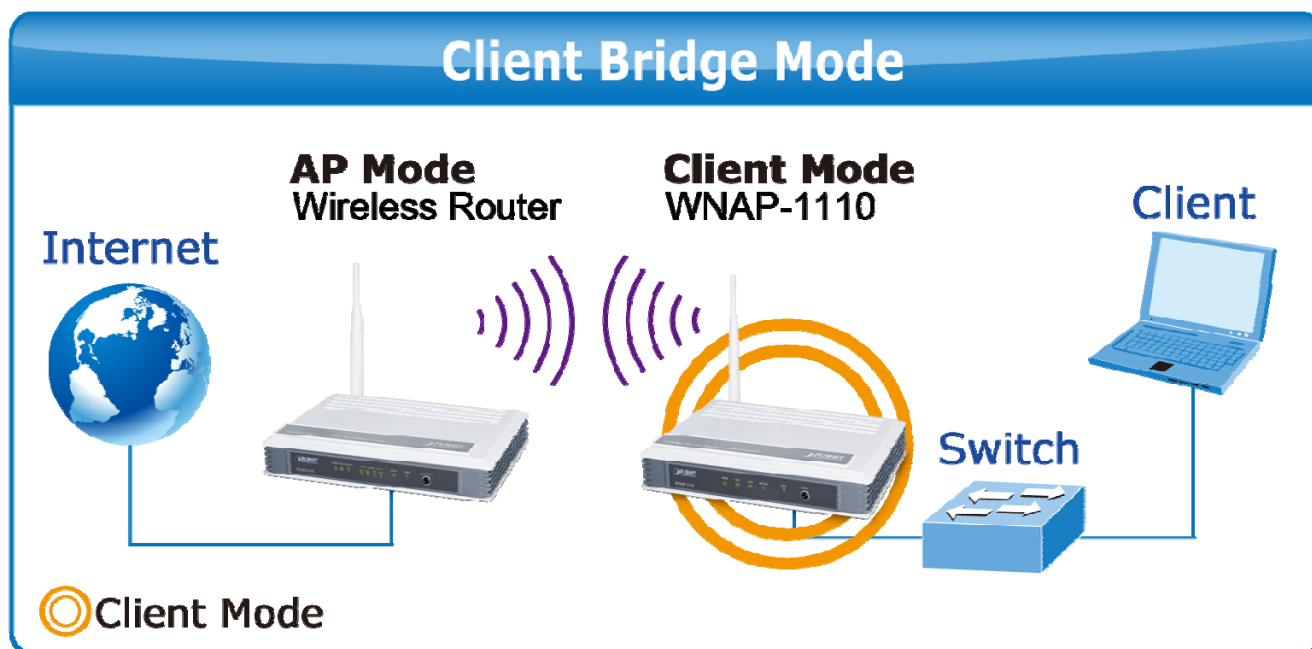


Figure 5-27 Topology – Client Mode

Step 1. Click "Survey".

The screenshot shows the 'Wireless Settings - Client' configuration page. It includes the following fields and controls:

- Wireless Name of Root AP:** A text input field with the note '(also called SSID)'.
- MAC Address of Root AP:** A text input field.
- Survey:** A button highlighted with a red circle.
- Region:** A dropdown menu currently set to 'United States'.
- Warning:** A message stating 'Ensure you select a correct country to comply local law. Incorrect settings may cause interference.'
- Channel Width:** A dropdown menu currently set to '40MHz'.
- Enable Wireless Radio:** A checked checkbox.
- Save:** A button at the bottom of the form.

Figure 5-28 Client – Survey

Step 2. Click “**Connect**” to choose the root AP from the list. If the root AP is not listed in the table, click “**Refresh**” to update the list.

AP List

AP Count: 10

ID	BSSID	SSID	Signal	Channel	Security	Choose
1	00-30-4F-A8-FF-FF	AP	81dB	1	WPA2-PSK	Connect
2	00-30-4F-CE-94-63	HITRON-5f-3	7dB	1	WPA/WPA2-PSK	Connect
3	00-30-4F-62-84-28	LinFamily	15dB	1	WPA/WPA2-PSK	Connect
4	00-30-4F-4A-C7-84	Luster-tw	8dB	1	WPA-PSK	Connect
5	00-30-4F-B8-56-76	baal	10dB	1	WPA/WPA2-PSK	Connect
6	00-30-4F-21-D5-F0	Air3GII	16dB	6	WPA/WPA2-PSK	Connect
7	00-30-4F-29-92-98	10F	7dB	6	WPA-PSK	Connect
8	00-30-4F-08-71-B4	HP-Print-B4-LaserJet 1102	1dB	6	OFF	Connect
9	00-30-4F-F0-CB-D9	NEXUS	38dB	6	WPA2-PSK	Connect
10	00-30-4F-E1-DA-29	bluepobo	4dB	6	WPA2-PSK	Connect

[Back](#) [Refresh](#)

Figure 5-29 Client – AP List

Step 3. The selected AP's wireless name and MAC address will be automatically filled in the relevant fields. Click “**Save**” and “**click here**” to save and apply the setting.

Wireless Settings - Client

Wireless Name of Root AP: (also called SSID)

MAC Address of Root AP:

[Survey](#)

Region: ▼

Warning: Ensure you select a correct country to comply local law. Incorrect settings may cause interference.

Channel Width: ▼

☒ Enable Wireless Radio

The change of wireless config will not take effect until the Device reboots, please [click here](#) to reboot.

[Save](#)

Figure 5-30 Client – Finish Setting

Step 4. You can go to **Status** page to check the repeater's signal.

Wireless	
Operation Mode:	Client
Signal:	59dB
Name (SSID):	AP
Channel:	1
Channel Width:	40MHz
MAC Address:	00-30-4F-AB-53-62

Figure 5-31 Client – Status

5.4 WPS

This section will guide you to adding a new wireless device quickly to an existing network by **WPS (Wi-Fi Protected Setup)** function.

Step 1. Choose menu “**WPS**”, and you will see the next screen (shown in **Figure 5-32**). Click “**Enable WPS**” button to enable the WPS function.

WPS (Wi-Fi Protected Setup)

WPS Status: **Enabled** Disable WPS

Current PIN: **49434194** Restore PIN Gen New PIN

☐ Disable PIN of this Device

Add A New Device: Add Device

Figure 5-32 WPS

The page includes the following fields:

Object	Description
WPS Status	Enable or disable the WPS function here.
Current PIN	The current value of the AP's PIN displayed here. The default PIN of the AP can be found in the label or User Guide.
Restore PIN	Restore the PIN of the AP to its default.

Gen New PIN	Click this button, and then you can get a new random value for the AP's PIN. You can ensure the network security by generating a new PIN.
Add device	You can add the new device to the existing network manually by clicking this button.

Step 2. To add a new device:

If the wireless adapter supports Wi-Fi Protected Setup (WPS), you can establish a wireless connection between wireless adapter and AP using either Push Button Configuration (PBC) method or PIN method.



To build a successful connection by WPS, you should also do the corresponding configuration of the new device for WPS function.

Step 1 By Push Button Configuration (PBC)

If the wireless adapter supports Wi-Fi Protected Setup and the Push Button Configuration (PBC) method, you can add it to the network by PBC with the following two methods.

Step 1: Press the WPS/Reset Button on the front panel of the AP.



Figure 5-33 Hardware WPS Button

Or you can keep the default WPS Status as Enabled and click the Add device button in **Figure 5-34**, and then the following screen will appear.

Add A New Device

☐ Enter the new device's PIN.
PIN:

☒ Press the button of the new device in two minutes.

Figure 5-34 Software WPS Button

Choose **Press the button of the new device in two minutes**, and click **Connect**.



When pressing and holding the WPS/Reset Button on the AP for more than 5 seconds, you will reset the AP.

Step 2: Press and hold the WPS Button equipped on the adapter directly for 2 or 3 seconds. Or you can click the WPS button with the same function in the configuration utility of the adapter.

Step 3: Wait for a while until the next screen appears. Click **Finish** to complete the WPS configuration.

Step 2 By PIN

If the new device supports Wi-Fi Protected Setup and the PIN method, you can add it to the network by PIN with the following two methods.

Method One: Enter the PIN of your Wireless adapter into the configuration utility of the AP

Step 1: Keep the default WPS Status as **Enabled** and click the **Add device** button in **Figure 5-35**, then the following screen will appear.

Figure 5-35 Add a new device

Step 2: Choose **Enter the new device's PIN** and enter the PIN code of the wireless adapter in the field behind **PIN** in the above figure. Then click **Connect**.



The PIN code of the adapter is always displayed on the WPS configuration screen.

Step 3: For the configuration of the wireless adapter, please choose the option that you want to **enter PIN into the AP** in the configuration utility of the WPS, and click **Next**.

Method Two: Enter the PIN of the AP into the configuration utility of your Wireless adapter

Step 1: Get the Current PIN code of the AP in **Figure 5-32** (each AP has its unique PIN code).

Step 2: For the configuration of the wireless adapter, please choose the option that you want to **enter the PIN of the AP** in the configuration utility of the Wireless adapter, and enter it into the field. Then click **Next**.



The default PIN code of the AP can be found in WPS configuration screen as shown in **Figure 5-32**.

Step 3. You will see the following screen when the new device has successfully connected to the network.

Add A New Device

☒ Enter the new device's PIN.
PIN:

☐ Press the button of the new device in two minutes.

Connect successfully!

Figure 5-36 New device connect successfully



1. The WPS LED on the AP will light green for about 5 minutes if the device has been successfully added to the network.
2. The WPS function cannot be configured if the Wireless Function of the AP is disabled. Please make sure the Wireless Function is enabled before configuring the WPS.

5.5 Network

There are three submenus under the Network menu (shown in **Figure 5-37**): **WAN**, **LAN**, and **MAC Clone**. Click any of them, and you will be able to configure the corresponding function.

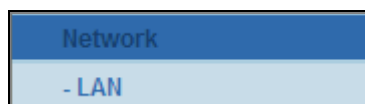


Figure 5-37 The Network menu

5.5.1 LAN

Choose menu "**Network**→**LAN**" to configure the IP parameters of the LAN on the screen as shown below:

 A screenshot of the LAN configuration window. The title bar says 'LAN'. Inside, there are five rows of configuration fields:

- MAC Address: 00-30-4F-AB-53-62
- Type: Static IP (with a dropdown arrow)
- IP Address: 192.168.1.253
- Subnet Mask: 255.255.255.0 (with a dropdown arrow)
- Gateway: 0.0.0.0

 At the bottom right is a 'Save' button.

Figure 5-38 LAN Settings

The page includes the following fields:

Object	Description
MAC Address	The physical address of the AP, as seen from the LAN. The value can't be changed.
Type	Select Dynamic IP to get IP address from DHCP server or select Static IP to configure IP address manually from the drop-down list.
IP Address	Enter the IP address of your AP or reset it in dotted-decimal notation (factory default: 192.168.1.1).
Subnet Mask	An address code that determines the size of the network. Normally use 255.255.255.0 as the subnet mask.

Gateway	The gateway should be in the same subnet as your IP address.
----------------	--------------------------------------------------------------



-
- A. If you change the IP Address of LAN, you must use the new IP Address to login the AP.
 - B. If the new LAN IP Address you set is not in the same subnet, the IP Address pool of the DHCP server will change accordingly at the same time while the Virtual Server and DMZ Host will not take effect until they are re-configured.
-

5.6 Wireless

There are five submenus under the Wireless menu (shown in **Figure 5-39**): **Wireless Settings**, **Wireless Security**, **Wireless MAC Filtering**, **Wireless Advanced** and **Wireless Statistics**. Click any of them, and you will be able to configure the corresponding function.



Figure 5-39 Wireless menu

5.6.1 Wireless Settings

Choose menu "**Wireless→Wireless Settings**" to configure the basic settings for the wireless network on this page.

A screenshot of the "Wireless Settings - Access Point" configuration page. The title "Wireless Settings - Access Point" is at the top in bold. Below it are several configuration fields: "Wireless Network Name:" with a text box containing "WNAP-1110" and a note "(Also called the SSID)"; "Region:" with a dropdown menu showing "United States"; a "Warning:" message in grey text stating "Ensure you select a correct country to comply local law. Incorrect settings may cause interference."; "Channel:" with a dropdown menu showing "Auto"; "Mode:" with a dropdown menu showing "11bgn mixed"; and "Channel Width:" with a dropdown menu showing "Auto". At the bottom of these fields are two checked checkboxes: "Enable Wireless Radio" and "Enable SSID Broadcast". A "Save" button is located at the very bottom of the form.

Figure 5-40 Wireless Settings

The page includes the following fields:

Object	Description
Wireless Network Name (SSID)	Enter a value of up to 32 characters. The same name of SSID (Service Set Identification) must be assigned to all wireless devices in your network. Considering your wireless network security, the default SSID is set to be WNAP-1110. This value is case-sensitive. For example, <i>PLANET</i> is NOT the same as <i>planet</i> .
Region	Select your region from the pull-down list. This field specifies the region where the wireless function of the AP can be used. It may be illegal to use the wireless function of the AP in a region other than one of those specified in this field. If your country or region is not listed, please contact your local government agency for assistance. Please be note that selecting the incorrect country may cause interference to other devices and violate the applicable law.
Channel	This field determines which operating frequency will be used. The default channel is set to Auto , so the AP will choose the best channel automatically. It is not necessary to change the wireless channel unless you notice interference problems with another nearby access point.
Mode	Select the desired mode. The default setting is 11bgn mixed. 11b only, 11g only, 11n only, 11bg mixed, 11bgn mixed. It is strongly recommended that you set the Mode to 802.11b&g&n , and all of 802.11b, 802.11g, and 802.11n wireless stations can connect to the AP.
Channel width	Select any channel width from the pull-down list. The default setting is Auto, which can adjust the channel width for your clients automatically.
Enable Wireless Radio	The wireless radio of this AP can be enabled or disabled to allow wireless stations access.
Enable SSID Broadcast	When wireless clients survey the local area for wireless networks to associate with, they will detect the SSID broadcast by the AP. If you select the Enable SSID Broadcast checkbox, the Wireless AP will broadcast its name (SSID) on the air.



If 11b only, 11g only, or 11bg mixed is selected in the Mode field, the Channel Width selecting field will turn grey and the value will become 20M, which is unable to be changed.

5.6.2 Wireless Security

Choose menu “**Wireless→Wireless Security**” to configure the security settings of your wireless network.

Wireless Security

☐ **Disable Security**

☒ **WPA/WPA2 - Personal(Recommended)**

Version:
Encryption:
Password:

(You can enter ASCII characters between 8 and 63 or Hexadecimal characters between 8 and 64)

Group Key Update Period: (in second, minimum is 30, 0 means no update)

☐ **WPA/WPA2 - Enterprise**

Version:
Encryption:
Radius Server IP:
Radius Port: (1-65535, 0 stands for default port 1812)
Radius Password:
Group Key Update Period: (in second, minimum is 30, 0 means no update)

☐ **WEP**

Type:
WEP Key Format:

Key Selected	WEP Key	Key Type
Key 1: <input checked="" type="radio"/>	<input type="text"/>	<input type="text" value="Disabled"/>
Key 2: <input type="radio"/>	<input type="text"/>	<input type="text" value="Disabled"/>
Key 3: <input type="radio"/>	<input type="text"/>	<input type="text" value="Disabled"/>
Key 4: <input type="radio"/>	<input type="text"/>	<input type="text" value="Disabled"/>

Save

Figure 5-41 Wireless Security

The AP supports the following wireless security modes:

Object	Description
Disable Security	If you do not want to use wireless security, select this check box, but it's strongly recommended to choose one of the following modes to enable security.
WEP	WEP (Wired Equivalent Privacy) is a security protocol, specified in the IEEE Wireless Fidelity (Wi-Fi) standard, 802.11b, that is designed to provide a wireless local area network (WLAN) with a level of security and privacy comparable to what

	is usually expected of a wired LAN.
WPA/WPA2 - Personal	WPA-Personal (a.k.a. WPA-PSK) is a common method to secure wireless networks. In the Personal mode, a pre-shared key or passphrase is used for authentication. This pre-shared key is then dynamically sent between the AP and clients.
WPA/WPA2 - Enterprise	WPA-Enterprise (a.k.a. WPA-802.1x, RADIUS) includes all of the features of WPA-Personal (WPA-PSK) plus support for 802.1x RADIUS authentication and is appropriate in those cases where a RADIUS server is deployed. WPA-Enterprise should only be used when a RADIUS server is connected for client authentication.

A. WEP

☐ **WEP**

Type: Automatic

WEP Key Format: Hexadecimal

Key Selected	WEP Key	Key Type
Key 1: <input checked="" type="radio"/>		Disabled
Key 2: <input type="radio"/>		Disabled
Key 3: <input type="radio"/>		Disabled
Key 4: <input type="radio"/>		Disabled

Figure 5-42 Wireless Security – WEP

Object	Description
WEP	It is based on the IEEE 802.11 standard. If you select this check box, you will find a notice in red as show in Figure 5-42 Wireless Security – WEP.
Type	you can choose the type for the WEP security on the pull-down list. The default setting is Automatic , which can select Open System or Shared Key authentication type automatically based on the wireless station's capability and request.
WEP Key Format	Hexadecimal and ASCII formats are provided. Hexadecimal format stands for any combination of hexadecimal digits (0-9, a-f, A-F) in the specified length. ASCII format stands for any combination of keyboard characters in the specified length.
WEP Key	Select which of the four keys will be used and enter the matching WEP key that you create. Make sure these values are identical on all wireless stations in your network.

Key Type	You can select the WEP key length (64-bit , or 128-bit , or 152-bit .) for encryption. "Disabled" means this WEP key entry is invalid.	
	64-bit	You can enter 10 hexadecimal digits (any combination of 0-9, a-f, A-F, zero key is not promoted) or 5 ASCII characters.
	128-bit	You can enter 26 hexadecimal digits (any combination of 0-9, a-f, A-F, zero key is not promoted) or 13 ASCII characters.
	152-bit	You can enter 32 hexadecimal digits (any combination of 0-9, a-f, A-F, zero key is not promoted) or 16 ASCII characters.



If you do not set the key, the wireless security function is still disabled even if you have selected Shared Key as Authentication Type.

B. WPA/WPA2 – Enterprise

☐ **WPA/WPA2 - Enterprise**

Version:

Encryption:

Radius Server IP:

Radius Port: (1-65535, 0 stands for default port 1812)

Radius Password:

Group Key Update Period: (in second, minimum is 30, 0 means no update)

Figure 5-43 Wireless Security - WPA/WPA2 Enterprise

The page includes the following fields:

Object	Description
WPA/WPA2	It is based on Radius Server.
Version	You can choose the version of the WPA security on the pull-down list. The default setting is Automatic , which can select WPA (Wi-Fi Protected Access) or WPA2 (WPA version 2) automatically based on the wireless station's capability and request.
Encryption	You can select either Automatic , or TKIP or AES .

Radius Server IP	Enter the IP address of the Radius Server.
Radius Port	Enter the port that radius service used.
Radius Password	Enter the password for the Radius Server.
Group Key Update Period	Specify the group key update interval in seconds. The value should be 30 or above. Enter 0 to disable the update.



If you check the WPA/WPA2 radio button and choose TKIP encryption, you will find a notice in red as shown in **Figure 5-43**.

C. WPA/WPA2 – Personal

WPA/WPA2 - Personal(Recommended)

Version:

Encryption:

Password:

(You can enter ASCII characters between 8 and 63 or Hexadecimal characters between 8 and 64)

Group Key Update Period: (in second, minimum is 30, 0 means no update)

Figure 5-44 Wireless Security - WPA/WPA2 Personal

The page includes the following fields:

Object	Description
WPA-PSK/WPA2-PSK	It's the WPA/WPA2 authentication type based on pre-shared passphrase.
Version	You can choose the version of the WPA-PSK security on the drop-down list. The default setting is Automatic , which can select WPA-PSK (Pre-shared key of WPA) or WPA2-PSK (Pre-shared key of WPA) automatically based on the wireless station's capability and request.
Encryption	When WPA-PSK or WPA is set as the Authentication Type, you can select either Automatic , or TKIP or AES as Encryption.
PSK Password	You can enter ASCII characters between 8 and 63 characters or 8 to 64 Hexadecimal characters.
Group Key Update Period	Specify the group key update interval in seconds. The value should be 30 or above. Enter 0 to disable the update.

Be sure to click the **Save** button to save your settings on this page.



If you check the **WPA-PSK/WPA2-PSK** radio button and choose TKIP encryption, you will find a notice in red as shown in **Figure 5-44**.

5.6.3 Wireless MAC Filtering

Choose menu “**Wireless→MAC Filtering**”, and you can control the wireless access by configuring the Wireless MAC Address Filtering function, shown in **Figure 5-45**. This function is not available when the operation is set to Client.

Wireless MAC Filtering

Wireless MAC Filtering: **Disabled**

Filtering Rules

☒ Deny the stations specified by any enabled entries in the list to access.

☐ Allow the stations specified by any enabled entries in the list to access.

ID	MAC Address	Status	Description	Modify
<input type="button" value="Add New..."/> <input type="button" value="Enable All"/> <input type="button" value="Disable All"/> <input type="button" value="Delete All"/>				
<input type="button" value="Previous"/> <input type="button" value="Next"/>				

Figure 5-45 Wireless MAC Address Filtering

- **Wireless MAC Filtering** : Click the **Enable** button to enable the Wireless MAC Address Filtering. The default setting is disabled.
- **Filtering Rules** : Select "**Allow** the stations specified by any enabled entries in the list to access." if you only want selected computers to have network access and all other computers not to have network access. Select "**Deny** the stations specified by any enabled entries in the list to access." if you want all computers to have network access except those computers in the list.
- **Add New...** : Click “**Add New...**” to create a user profile to which wireless network access is denied or allowed.

To add a Wireless MAC Address filtering entry, click the **Add New...** button. The "**Add or Modify Wireless MAC Address Filtering entry**" page will appear, shown in **Figure 5-46**:

Add or Modify Wireless MAC Address Filtering entry

MAC Address:

Description:

Status:

Figure 5-46 Add or Modify Wireless MAC Address Filtering entry

Object	Description
MAC Address	The wireless station's MAC address that you want to filter.
Description	A simple description of the wireless station.
Status	The status of this entry either Enabled or Disabled .

To add or modify a MAC Address Filtering entry, follow these instructions:

Step 1. Enter the appropriate MAC Address into the **MAC Address** field. The format of the MAC Address is XX-XX-XX-XX-XX-XX (X is any hexadecimal digit). For example, 00-30-4F-11-22-33.

Step 2. Enter a simple description of the wireless station in the **Description** field. For example, Wireless station A.

Step 3. Status - Select **Enabled** or **Disabled** for this entry on the **Status** pull-down list.

Step 4. Click the **Save** button to save this entry.

To modify or delete an existing entry:

Step 1. Click the **Modify** in the entry you want to modify. If you want to delete the entry, click the **Delete**.

Step 2. Modify the information.

Step 3. Click the **Save** button.

Click the **Enable All** button to make all entries enabled

Click the **Disabled All** button to make all entries disabled.

Click the **Delete All** button to delete all entries

Click the **Next** button to go to the next page

Click the **Previous** button to return to the previous page.

For example, if you desire that the wireless station 1 with MAC address 00-30-4F-11-22-33 and the wireless station 2 with MAC address 00-30-4F-A8-FF-FF are able to access the AP, but all the other wireless stations cannot access the AP, you can configure the **Wireless MAC Address Filtering** list by following the steps below:

Step 1. Click the **Enable** button to enable this function.

Step 2. Select the radio button: **Deny the stations not specified by any enabled entries in the list to access** for **Filtering Rules**.

Step 3. Delete all or disable all entries if there are any entries already.

Step 4. Click the **Add New...** button and enter the MAC address 00-30-4F-11-22-33 /00-30-4F-A8-FF-FF in the **MAC Address** field, then enter wireless station 1/2 in the **Description** field, while selecting **Enabled** in the **Status** pull-down list. Finally, click the **Save** and the **Back** button.

The filtering rules that configured should be similar to the following list:

Wireless MAC Filtering

Wireless MAC Filtering: **Enabled** Disable

Filtering Rules

☒ **Deny** the stations specified by any enabled entries in the list to access.

☐ **Allow** the stations specified by any enabled entries in the list to access.

ID	MAC Address	Status	Description	Modify
1	00-30-4F-11-22-33	Enabled	My Client	Modify Delete
2	00-30-4F-A8-FF-FF	Enabled	My Pad	Modify Delete

Add New...
Enable All
Disable All
Delete All

Figure 5-47 Wireless MAC Address Filtering

5.6.4 Wireless Advanced

Choose menu “**Wireless→Wireless Advanced**”, and you can configure the advanced settings of your wireless network.

Wireless Advanced

Beacon Interval : (40-1000)

RTS Threshold: (256-2346)

Fragmentation Threshold: (256-2346)

DTIM Interval: (1-255)

☒ Enable WMM

☒ Enable Short GI

☐ Enable AP Isolation

Figure 5-48 Wireless Advanced

The page includes the following fields:

Object	Description
Beacon Interval	Enter a value between 20-1000 milliseconds for Beacon Interval here. The beacons are the packets sent by the AP to synchronize a wireless network. Beacon Interval value determines the time interval of the beacons. The default value is 100.
RTS Threshold	Here you can specify the RTS (Request to Send) Threshold. If the packet is larger than the specified RTS Threshold size, the AP will send RTS frames to a particular receiving station and negotiate the sending of a data frame. The default value is 2346.
Fragmentation Threshold	This value is the maximum size determining whether packets will be fragmented. Setting the Fragmentation Threshold too low may result in poor network performance since excessive packets. 2346 is the default setting and is recommended.
DTIM Interval	This value determines the interval of the Delivery Traffic Indication Message (DTIM). A DTIM field is a countdown field informing clients of the next window for listening to broadcast and multicast messages. When the AP has buffered broadcast or multicast messages for associated clients, it sends the next DTIM with a DTIM Interval value. You can specify the value between 1-255

	Beacon Intervals. The default value is 1, which indicates the DTIM Interval is the same as Beacon Interval.
Enable WMM	WMM function can guarantee the packets with high- priority messages being transmitted preferentially. It is strongly recommended enabled.
Enable Short GI	This function is recommended for it will increase the data capacity by reducing the guard interval time.
Enabled AP Isolation	This function can isolate wireless stations on your network from each other. Wireless devices will be able to communicate with the AP but not with each other. To use this function, check this box. AP Isolation is disabled by default.



If you are not familiar with the setting items on this page, it's strongly recommended to keep the provided default values; otherwise, it may result in low wireless network performance.

5.6.5 Antenna Alignment

The Align Antenna utility allows the user to point and optimize the antenna in the direction of the maximum link signal. Choose menu “**Wireless→Antenna Alignment**”, and you can align the remote site by reference to the RSSI value of the remote AP. You can observe the remote AP's signal strength changes while changing the antenna's direction.

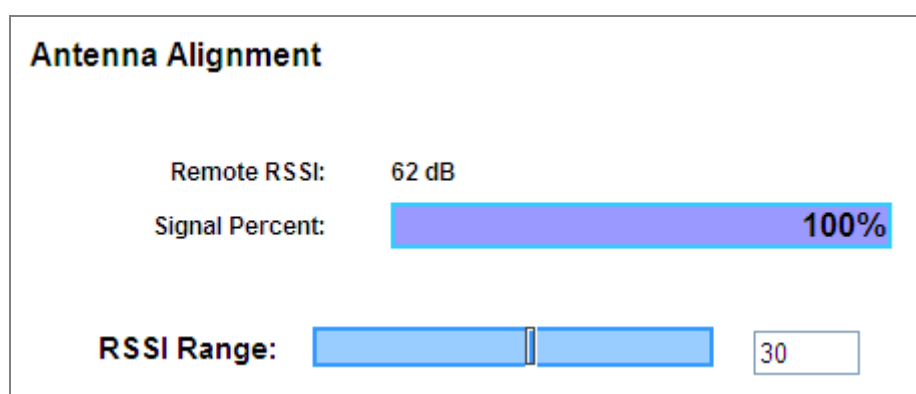


Figure 5-49 Antenna Alignment

The page includes the following fields:

Object	Description
Remote AP RSSI	Remote AP's signal strength value.
Signal percent	The ratio of RSSI to RSSI RANGE in percentage.

RSSI RANGE

The "**RSSI Range**" slider bar allows the range of the meter to be either increased or reduced. If the range is reduced, the Signal Percent change will be more sensitive to signal fluctuations as RSSI Range slider actually changes an offset of the maximum indicator value thus the scale itself.

You can drag the Slider to set or input the RSSI RANGE value.



Note

The Antenna Alignment only works after you have established connection to remote AP in client mode.

5.6.6 Throughput Monitor

Choose menu "**Wireless**→**Throughput Monitor**" to help you to monitor the current wireless throughput.

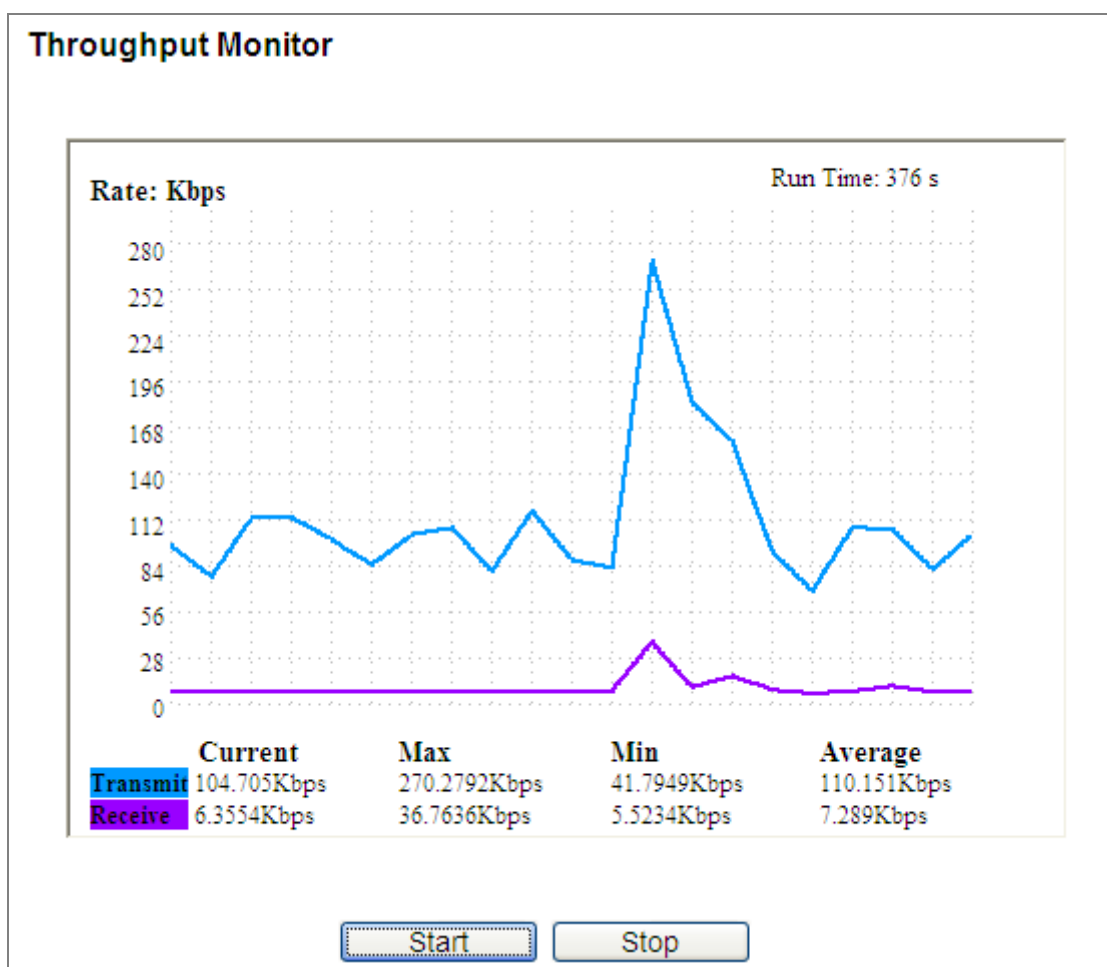


Figure 5-50 Throughput Monitor

- Click the **Start** button to start wireless throughput monitor.
- Click the **Stop** button to stop wireless throughput monitor.

The page includes the following fields:

Object	Description
Rate	The Throughput unit.
Run Time	How long this function is running.
Transmit	Displays the wireless transmitting rate information.
Receive	Displays the wireless receiving rate information.

5.6.7 Wireless Statistics

Choose menu “**Wireless→Wireless Statistics**”, and you can see the MAC Address, Current Status, Received Packets and Sent Packets for each connected wireless station.

Wireless Statistics				
Current Connected Wireless Stations numbers:		1	Refresh	
ID	MAC Address	Current Status	Received Packets	Sent Packets
1	00-30-4F-A8-FF-FF	WPA2-Personal	1616	1517
Previous		Next		

Figure 5-51 The AP attached wireless stations

The page includes the following fields:

Object	Description
MAC Address	The connected wireless station's MAC address
Current Status	The connected wireless station's running status, one of STA-AUTH / STA-ASSOC / STA-JOINED / WPA / WPA-PSK / WPA2 / WPA2-PSK / AP-UP / AP-DOWN / Disconnected
Received Packets	Packets received by the station
Sent Packets	Packets sent by the station

You cannot change any of the values on this page. To update this page and to show the current connected wireless stations, click on the **Refresh** button.

If the numbers of connected wireless stations go beyond one page, click the **Next** button to go to the next page and click the **Previous** button to return to the previous page.



This page will be refreshed automatically every 5 seconds.

5.7 DHCP

There are three submenus under the DHCP menu (shown in **Figure 5-52**): **DHCP Settings**, **DHCP Clients List** and **Address Reservation**. Click any of them, and you will be able to configure the corresponding function.

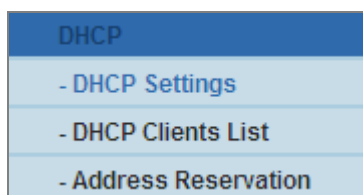


Figure 5-52 The DHCP menu

5.7.1 DHCP Settings

Choose menu “**DHCP→DHCP Settings**” and you can configure the DHCP Server on the page (shown in **Figure 5-53**).The AP is set up by default as a DHCP (Dynamic Host Configuration Protocol) server, which provides the TCP/IP configuration for all the PC(s) that are connected to the AP on the LAN.

DHCP Settings

DHCP Server: ☒ Disable ☐ Enable

Start IP Address:

End IP Address:

Address Lease Time: minutes (1~2880 minutes, the default value is 120)

Default Gateway: (optional)

Default Domain: (optional)

Primary DNS: (optional)

Secondary DNS: (optional)

Figure 5-53 DHCP Settings

The page includes the following fields:

Object	Description
DHCP Server	Enable or Disable the DHCP server. If you disable the Server, you must have another DHCP server within your network or else you must configure the computer manually.
Start IP Address	Specify an IP address for the DHCP Server to start with when assigning IP addresses. 192.168.1.100 is the default start address.
End IP Address	Specify an IP address for the DHCP Server to end with when assigning IP addresses. 192.168.1.199 is the default end address.
Address Lease Time	The Address Lease Time is the amount of time a network user will be allowed connection to the AP with their current dynamic IP Address. Enter the amount of time in minutes and the user will be "leased" this dynamic IP Address. After the time is up, the user will be automatically assigned a new dynamic IP address. The range of the time is 1 ~ 2880 minutes. The default value is 120 minutes.
Default Gateway	(Optional.) Suggest to input the IP address of the LAN port of the AP, default value is 192.168.1.1
Default Domain	(Optional.) Input the domain name of your network.
Primary DNS	(Optional.) Input the DNS IP address provided by your ISP. Or consult your ISP.

Secondary DNS	(Optional.) Input the IP address of another DNS server if your ISP provides two DNS servers.
----------------------	----------------------------------------------------------------------------------------------



To use the DHCP server function of the AP, you must configure all computers on the LAN as "Obtain an IP Address automatically" mode.

5.7.2 DHCP Clients List

Choose menu "DHCP→DHCP Clients List", and you can view the information about the clients attached to the AP in the next screen (shown in **Figure 5-54**).

DHCP Clients List				
ID	Client Name	MAC Address	Assigned IP	Lease Time
1	My Client	00-30-4F-A8-FF-FF	192.168.1.100	01:59:56
<input type="button" value="Refresh"/>				

Figure 5-54 DHCP Clients List

The page includes the following fields:

Object	Description
ID	The index of the DHCP Client
Client Name	The name of the DHCP client
MAC Address	The MAC address of the DHCP client
Assigned IP	The IP address that the AP has allocated to the DHCP client.
Lease Time	The time of the DHCP client leased. After the dynamic IP address has expired, a new dynamic IP address will be automatically assigned to the user.

You cannot change any of the values on this page. To update this page and to show the current attached devices, click the **Refresh** button.

5.7.3 Address Reservation

Choose menu “**DHCP→Address Reservation**”, and you can view and add a reserved address for clients via the next screen (shown in **Figure 5-55**). When you specify a reserved IP address for a PC on the LAN, that PC will always receive the same IP address each time when it accesses the DHCP server. Reserved IP addresses should be assigned to the servers that require permanent IP settings.

Figure 5-55 Address Reservation

The page includes the following fields:

Object	Description
ID	Displays the index of the DHCP client.
MAC Address	The MAC address of the PC for which you want to reserve IP address.
Reserved IP Address	Displays the IP address that the AP is reserved.
Status	The status of this entry either Enabled or Disabled .
Modify	To modify or delete an existing entry.

To Reserve IP addresses:

- Step 1. Click the **Add New ...** button.
- Step 2. Enter the MAC address (in XX-XX-XX-XX-XX-XX format.) and IP address in dotted-decimal notation of the computer you wish to add.
- Step 3. Click the **Save** button when finished.

Add or Modify an Address Reservation Entry

MAC Address: 00-30-4F-A8-FF-FF

Reserved IP Address: 192.168.1.100

Status: Enabled

Save Back

Figure 5-56 Add an Address Reservation Entry

The page includes the following fields:

Object	Description
MAC Address	The MAC address of the PC for which you want to reserve IP address.
Assigned IP Address	The IP address of the AP reserved.
Status	The status of this entry either Enabled or Disabled .

To modify or delete an existing entry:

- Step 1. Click the **Modify** in the entry you want to modify. If you want to delete the entry, click the **Delete**.
- Step 2. Modify the information.
- Step 3. Click the **Save** button.

Address Reservation

ID	MAC Address	Reserved IP Address	Status	
1	00-30-4F-A8-FF-FF	192.168.1.100	Enabled	Modify Delete

Add New... Enable All Disable All Delete All

Previous Next

Figure 5-57 Modify an Address Reservation Entry

Click the **Enable/ Disabled All** button to make all entries enabled/disabled

Click the **Delete All** button to delete all entries

Click the **Next** button to go to the next page and click the **Previous** button to return to the previous page.

5.8 System Tools

Choose menu “**System Tools**”, and you can see the submenus under the main menu: **SNMP**, **Time Settings**, **Diagnostic**, **Ping Watch Dog**, **Firmware Upgrade**, **Factory Defaults**, **Backup & Restore**, **Reboot**, **Password**, **System Log** and **Statistics**. Click any of them, and you will be able to configure the corresponding function. The detailed explanations for each submenu are provided below.



Figure 5-58 The System Tools menu

5.8.1 SNMP

Choose menu “**System Tools**→**SNMP**” to enable this function to allow the network management station to retrieve statistics and status from the SNMP agent in this AP. Simple Network Management Protocol (SNMP) is a popular network monitoring and management protocol, used to refer to a collection of specifications for network management that includes the protocol itself.

SNMP Settings

SNMP Agent: ☒ Enable ☐ Disable

SysContact:

SysName:

SysLocation:

Get Community:

Get Source:

Set Community:

Set Source:

Figure 5-59 The System Tools menu

The page includes the following fields:

Object	Description
SNMP Agent	Select the radio button before Enable will enable this function if you want to have remote control through SNMPv1/v2 agent with MIB-II. Select the radio button before Disable will disable this function. The default setting is Disable .
SysContact	The textual identification of the contact person for this managed node.
SysName	An administratively-assigned name for this managed node.
SysLocation	The physical location of this node.
Get Community	Enter the community name that allows Read-Only access to the AP's SNMP information. The community name can be considered a group password. The default setting is " public ".
Get Source	Get source defines the IP address or subnet for management systems that can read information from this 'get' community device.
Set Community	Enter the community name that allows Read/Write access to the AP's SNMP information. The community name can be considered a group password. The default setting is " private ".
Set Source	Set source defines the IP address or subnet for management systems that can control this 'set' community device.



A restricted source can be a specific IP address (e.g. 10.10.10.1), or a subnet - represented as IP/BITS (e.g. 10.10.10.0/24). If an IP address of 0.0.0.0 is specified, the agent will accept all requests under the corresponding community name.

5.8.2 Time Settings

Choose menu "System Tools→Time Settings", and you can configure the system time and the auto reboot time on the following screen. Click the "GET GMT" to update the time from the Internet with the pre-defined servers or entering the customized server (IP Address or Domain Name) in the above frames.

Time Settings

Time zone: (GMT+08:00) Beijing, Hong Kong, Perth, Singapore

Date: 1 1 1970 (MM/DD/YY)

Time: 0 7 21 (HH/MM/SS)

NTP Server I: 0.0.0.0 (Optional)

NTP Server II: 0.0.0.0 (Optional)

Get GMT

☐ Enable Daylight Saving

Start: Mar 3rd Sun 2am

End: Nov 2nd Sun 3am

Daylight Saving Status: daylight saving is down.

AutoRebootSetting: Enabled

Start Time: 00:00 (Hour:Minute)

Reboot Plan: Weekday

Weekday: ☐ Sun. ☐ Mon. ☐ Tue. ☐ Wed. ☐ Thu. ☐ Fri. ☒ Sat.

Note: Click the "GET GMT" to update the time from the internet with the pre-defined servers or entering the customized server(IP Address or Domain Name) in the above frames.

Save

Figure 5-60 Time Settings

The page includes the following fields:

Object	Description
Time Zone	Select your local time zone from this pull down list.
Date	Enter your local date in MM/DD/YY into the right blanks.
Time	Enter your local time in HH/MM/SS into the right blanks.
NTP Server Prior	Enter the address for the NTP Server, then the AP will get the time from the NTP Server preferentially. In addition, the AP builds in some common NTP Servers, so it can get time automatically once it connects the Internet.
Enable Daylight Saving	Check this option if your location observes daylight saving time.
Auto Reboot Setting	Enable this option to enable auto reboot function to clear the memory buffer regularly.
Start Time	Enter the Start Time (24-hour format) to enable the auto reboot function to take effect.
Reboot Plan	Choose " Everyday " or " Weekday " in the Reboot Plan field to schedule your auto reboot frequency.
Weekday	When you choose " Weekday " as reboot plan, you need to select at least one day of a week for the plan.

To configure the system manually:

- Step 1. Select your local time zone.
- Step 2. Enter date and time in the right blanks.
- Step 3. Click **Save** to save the configuration.

To configure the system automatically:

- Step 1. Select your local time zone.
- Step 2. Enter the IP address for **NTP Server Prior**.
- Step 3. Click the **Get GMT** button to get system time from Internet if you have connected to the Internet.

To enable Auto Reboot:

- Step 1. Select the **Auto Reboot Setting** checkbox.
- Step 2. Enter the Start Time (24-hour format) to enable this function to take effect. For example, if you want this function to work at 18:00 every Sunday, you need to choose "Weekday" in the **Reboot Plan** field, and select the "Sun" checkbox in the **Weekday** field. If you want this function to work at 18:00 every day, you just need to choose "Everyday" in the **Reboot Plan** field.
- Step 3. Click the **Save** button to effect this function.



1. This setting will be used for some time-based functions such as firewall functions. These time dependant functions will not work if time is not set. So, it is important to specify time settings as soon as you successfully login to the Device.
2. The time will be lost if the Device is turned off.
3. The Device will automatically obtain GMT from the Internet if it is configured accordingly.
4. In daylight saving configuration, start time and end time will be within one year and start time will be earlier than end time.
5. After you enable daylight saving function, it will take action in one minute.
6. The Auto Reboot setting will only take effect when the Internet connection is accessible and the GMT time is configured correctly.
7. You must select at least one day when choosing "Weekday" as your reboot plan.
8. When choosing "Every day" as your reboot plan, the "Weekday" will be grayed out (disabled), which means Every day will auto reboot at the time that you scheduled.

5.8.3 Diagnostic

Choose menu **"System Tools → Diagnostic"**, and you can transact Ping or Traceroute function to check connectivity of your network in the following screen.

Diagnostic Parameters

Diagnostic Tool: ☒ Ping ☐ Traceroute

IP Address/ Domain Name:

Ping Count: (1-50)

Ping Packet Size: (4-1472 Bytes)

Ping Timeout: (100-2000 Milliseconds)

Traceroute Max TTL: (1-30)

Diagnostic Results

The Device is ready.

Figure 5-61 Diagnostic Tools

The page includes the following fields:

Object	Description
Diagnostic Tool	<p>Check the radio button to select one diagnostic tool.</p> <ul style="list-style-type: none"> ◆ Ping - This diagnostic tool troubleshoots connectivity, reachability, and name resolution to a given host or gateway. ◆ Traceroute - This diagnostic tool tests the performance of a connection.
IP Address/Domain Name	Type the destination IP address (such as 74.125.153.103) or Domain name (such as http://www.google.com)
Pings Count	The number of Ping packets for a Ping connection.
Ping Packet Size	The size of Ping packet.
Ping Timeout	Set the waiting time for the reply of each Ping packet. If there is no reply in the specified time, the connection is overtime.
Traceroute Max TTL	The max. number of hops for a Traceroute connection.

Click **Start** to check the connectivity of the Internet.



You can use ping or traceroute to test both numeric IP address or domain name. If pinging or tracerouting the IP address is successful, but pinging or tracerouting the domain name is not, you might have a name resolution problem. In this case, ensure that the domain name you are specifying can be resolved by using Domain Name System (DNS) queries.

The **Diagnostic Results** page displays the result of diagnosis.

If the result is similar to the following screen, the connectivity of the Internet is fine.

Diagnostic Parameters

Diagnostic Tool: ☒ Ping ☐ Traceroute

IP Address/ Domain Name:

Ping Count: (1-50)

Ping Packet Size: (4-1472 Bytes)

Ping Timeout: (100-2000 Milliseconds)

Traceroute Max TTL: (1-30)

Diagnostic Results

Pinging 8.8.8.8 with 64 bytes of data:

Reply from 8.8.8.8: bytes=64 time=25 TTL=48 seq=1

Reply from 8.8.8.8: bytes=64 time=25 TTL=48 seq=2

Reply from 8.8.8.8: bytes=64 time=27 TTL=48 seq=3

Reply from 8.8.8.8: bytes=64 time=38 TTL=48 seq=4

Ping statistics for 8.8.8.8

Packets: Sent = 4, Received = 4, Lost = 0 (0% loss),

Approximate round trip times in milliseconds:

Minimum = 25, Maximum = 38, Average = 28

Start

Figure 5-62 Diagnostic Results



Only one user can use this tool at one time. Options "Number of Pings", "Ping Size" and "Ping Timeout" are used for **Ping** function. Option "Tracert Hops" is used for **Tracert** function.

5.8.4 Ping Watch Dog

Choose menu “**System Tools** → **Ping Watch Dog**” to allow you to continuously monitor the particular connection between the AP to a remote host. It makes this AP continuously ping a user defined IP address (it can be the Internet gateway, for example). If it is unable to ping under the user defined constraints, this device will automatically reboot.

Ping Watch Dog Utility

☒ **Enable Ping Watch Dog**

IP Address:

Interval: (10-300) seconds

Delay: (60-300) seconds

Fail Count: (1-65535)

Figure 5-63 Ping Watch Dog

The page includes the following fields:

Object	Description
Enable	Turn on/off Ping Watch Dog.
IP Address	The IP address of the target host where the Ping Watch Dog Utility is sending ping packets.
Interval	Time interval between two ping packets which are sent out continuously.
Delay	Time delay before first ping packet is sent out when the device is restarted.
Fail Count	Upper limit of the ping packet the device can drop continuously. If this value is overrun, the device will restart automatically.

5.8.5 Firmware Upgrade

Choose menu “**System Tools** → **Firmware Upgrade**”, and you can update the latest version of firmware for the AP in the following screen.

Figure 5-64 Firmware Upgrade

The page includes the following fields:

Object	Description
Firmware Version	This displays the current firmware version.
Hardware Version	This displays the current hardware version. The hardware version of the upgrade file must accord with the AP's current hardware version.

To upgrade the AP's firmware, follow these instructions below:

- Step 1. Download a more recent firmware upgrade file from the [Planet](#) website
- Step 2. Type the path and file name of the update file into the **File** field. Or click the **Browse...** button to locate the update file.
- Step 3. Click the **Upgrade** button.

New firmware versions posted on the website of PLANET Technology can be downloaded for free. There is no need to upgrade the firmware unless the new firmware has a new feature you want to use. However, when experiencing problems caused by the AP rather than the configuration, you can try to upgrade the firmware.



Note

When you upgrade the AP's firmware, you may lose its current configurations, so before upgrading the firmware please write down some of your customized settings to avoid losing important settings.

Do not turn off the AP or press the Reset button while the firmware is being upgraded; otherwise, the AP may be damaged.

The AP will reboot after the upgrading has been finished.

5.8.6 Factory Defaults

Choose menu **"System Tools → Factory Defaults"**, and you can restore the configurations of the AP to factory defaults in the following screen

Factory Defaults

Click the following button to reset all configuration settings to their default values.

Restore

Figure 5-65 Restore Factory Default

Click the **Restore** button to reset all configuration settings to their default values.

Default IP Address: **192.168.1.253**

Default User Name: **admin**

Default Password: **admin**

Default SSID: **WNAP-1110**

Default Wireless Password: **PIN code** (refer to the label on the bottom of the WNAP-1110.)



Any settings you have saved will be lost when the default settings are restored.

5.8.7 Backup & Restore

Choose menu “**System Tools** → **Backup & Restore**”, and you can save the current configuration of the AP as a backup file and restore the configuration via a backup file as shown in **Figure 5-66**.

Backup & Restore

Backup:

Backup

File:

Browse...

Restore

Figure 5-66 Backup & Restore Configuration

Click the **Backup** button to save all configuration settings as a backup file in your local computer.

To restore the AP's configuration, follow these instructions.

- Step 1. Click the **Browse...** button to locate the update file for the AP, or enter the exact path to the Setting file in the text box.
- Step 2. Click the **Restore** button.



The current configuration will be covered by the uploading configuration file. The upgrade process lasts for 20 seconds and the AP will restart automatically. Keep the AP power on during the upgrading process to prevent any damage.

5.8.8 Reboot

Choose menu “**System Tools** → **Reboot**”, and you can click the **Reboot** button to reboot the AP via the next screen.

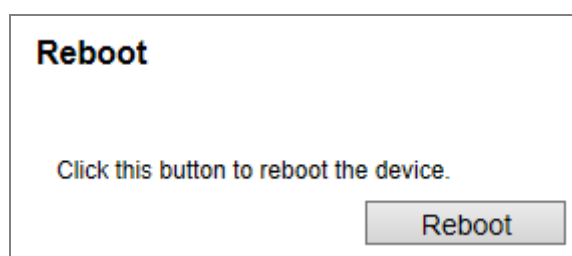


Figure 5-67 Reboot the AP

Some settings of the AP will take effect only after rebooting, which include

- ◆ Change the LAN IP Address (system will reboot automatically).
- ◆ Change the DHCP Settings.
- ◆ Change the Wireless configurations.
- ◆ Upgrade the firmware of the AP (system will reboot automatically).
- ◆ Restore the AP's settings to factory defaults (system will reboot automatically).
- ◆ Update the configuration with the file (system will reboot automatically).

5.8.9 Password

Choose menu “**System Tools** → **Password**”, and you can change the factory default user name and password of the AP in the next screen as shown in **Figure 5-68**.

Password

The username and password must not exceed 14 characters in length and must not include any spaces!

Old User Name:

Old Password:

New User Name:

New Password:

Confirm New Password:

Figure 5-68 Password

It is strongly recommended that you should change the factory default user name and password of the AP, because all users who try to access the AP's Web-based utility or Quick Setup will be prompted for the AP's default user name and password.



The new user name and password must not exceed 14 characters in length and not include any spaces. Enter the new Password twice to confirm.

Click the **Save** button when finished.

Click the **Clear All** button to clear all.

5.8.10 System Log

Choose menu “**System Tools** → **System Log**”, and you can view the logs of the AP.

System Log

Auto Mail Feature: **Disabled** Mail Settings

Log Type: **All** Log Level: **ALL**

Index	Time	Type	Level	Log Content
6	1st day 00:02:29	DHCP	NOTICE	DHCPs:Send ACK to 192.168.1.100
5	1st day 00:02:29	DHCP	NOTICE	DHCPs:Recv REQUEST from 00:30:4F:A8:FF:FF
4	1st day 00:02:29	DHCP	NOTICE	DHCPs:Send OFFER with ip 192.168.1.100
3	1st day 00:02:28	DHCP	NOTICE	DHCPs:Recv DISCOVER from 00:30:4F:A8:FF:FF
2	1st day 00:00:16	DHCP	NOTICE	DHCP server started
1	1st day 00:00:07	OTHER	INFO	System started

Time = 1970-01-01 0:36:13 2174s

H-Ver = WNAP-1110 v2 00000000 (BETA) : S-Ver = 3.7.2 Build 081231 Rel.0n (BETA)

L = 192.168.1.253 : M = 255.255.255.0

W1 = DHCP : W = 0.0.0.0 : M = 0.0.0.0 : G = 0.0.0.0

Refresh
Save Log
Mail Log
Clear Log

Previous
Next
Current No. **1** Page

Figure 5-69 System Log

The page includes the following fields:

Object	Description
Auto Mail Feature	Indicates whether auto mail feature is enabled or not.
Mail Settings	Set the receiving and sending mailbox address, server address, validation information as well as the timetable for Auto Mail Feature, as shown in Figure 5-70 .
Log Type	By selecting the log type, only logs of this type will be shown.

Log Level	By selecting the log level, only logs of this level will be shown.
Refresh	Click the Refresh button to show the latest log list.
Save Log	Click the Save Log button to save all the logs in a txt file.
Mail Log	Click the Mail Log to send an email of current logs manually according to the address and validation information set in Mail Settings. The result will be shown in the later log soon.
Clear Log	Click the Clear Log button to delete all the logs from the system permanently, not just from the page.
Previous	Click the Previous button return to the previous page.
Next	Click the Next button to go to the next page

Mail Account Settings

From:

To:

SMTP Server:

☒

Authentication

User Name:

Password:

Confirm The Password:

☐

Enable Auto Mail Feature

☒

Everyday, mail the log at :

☐

Mail the log every hours

Save

Back

Figure 5-70 Mail Account Settings

Click **Save** to keep your settings.

Click **Back** to return to the previous page.

The page includes the following fields:

Object	Description
From	Your mail box address. The AP would connect it to send logs.
To	Recipient's address. The destination mailbox where the logs would be received.
SMTP Server	Your SMTP server. It corresponds with the mailbox filled in the From field. You can log on the relevant website for Help if you are not clear with the address.
Authentication	Most SMTP Server requires Authentication. It is required by most mailboxes that need User Name and Password to log in.
User Name	Your mail account name filled in the From field. The part behind @ is excluded.
Password	Your mail account password.
Confirm The Password	Enter the password again to confirm.
Enable Auto Mail Feature	<p>Select it to mail logs automatically. You could mail the current logs either at a specified time everyday or by intervals, but only one could be the current effective rule.</p> <ul style="list-style-type: none"> • Everyday, at specified time, the Device will automatically send the log to specified mailbox. • Every few hours, such as 2 hours, the Device will automatically send the log to specified mailbox.



Only when you select Authentication, you have to enter the User Name and Password in the following fields.

5.8.11 Statistics

Choose menu “**System Tools** → **Statistics**”, and you can view the statistics of the AP, including total traffic and current traffic of the last Packets Statistic Interval.

Statistics

Current Statistics Status: **Disabled** Enable

Packets Statistics Interval(5~60): 10 Seconds Auto-refresh Refresh

Sorted Rules: Sorted by Current Bytes Reset All Delete All

IP Address/ MAC Address	Total		Current					Modify
	Packets	Bytes	Packets	Bytes	ICMP Tx	UDP Tx	SYN Tx	
The current list is empty.								

5 entries per page. Current No. 1 page

Previous Next

Figure 5-71 Statistics

The page includes the following fields:

Object	Description
Current Statistics Status	Enable or Disable. The default value is disabled. To enable, click the Enable button. If disabled, the function of DoS protection in Security settings will be disabled.
Packets Statistics Interval (5-60)	The default value is 10. Select a value between 5 and 60 seconds in the pull-down list. The Packets Statistic interval indicates the time section of the packets statistic.
Sorted Rules	Choose how displayed statistics are sorted.

Select the **Auto-refresh** checkbox to refresh automatically.

Click the **Refresh** button to refresh immediately.

Click **Reset All** to reset the values of all the entries to zero.

Click **Delete All** to delete all entries in the table.

Statistics Table:

IP/MAC Address		The IP and MAC address are displayed with related statistics.
Total	Packets	The total number of packets received and transmitted by the AP.
	Bytes	The total number of bytes received and transmitted by the AP.
Current	Packets	The total number of packets received and transmitted in the last Packets Statistic interval seconds.
	Bytes	The total number of bytes received and transmitted in the last Packets Statistic interval seconds.
	ICMP Tx	The number of the ICMP packets transmitted to WAN per second at the specified Packets Statistics interval. It is shown like "current transmitting rate / Max transmitting rate".
	UDP Tx	The number of UDP packets transmitted to the WAN per second at the specified Packets Statistics interval. It is shown like "current transmitting rate / Max transmitting rate".
	TCP SYN Tx	The number of TCP SYN packets transmitted to the WAN per second at the specified Packets Statistics interval. It is shown like "current transmitting rate / Max transmitting rate".
Modify	Reset	Reset the value of the entry to zero.
	Delete	Delete the existing entry in the table.

There would be 5 entries on each page. Click **Previous** to return to the previous page and **Next** to the next page.

Chapter 6. Quick Connection to a Wireless Network

6.1 Windows XP (Wireless Zero Configuration)

Step 1: Right-click on the **wireless network icon** displayed in the system tray

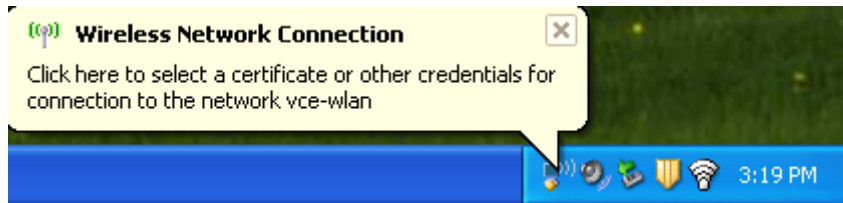


Figure 6-1 Wireless Zero Configuration

Step 2: Select [View Available Wireless Networks]



Figure 6-2 View Available Wireless Networks

Step 3: Highlight and select the wireless network (SSID) to connect

- (1) Select SSID [PLANET]
- (2) Click the [**Connect**] button

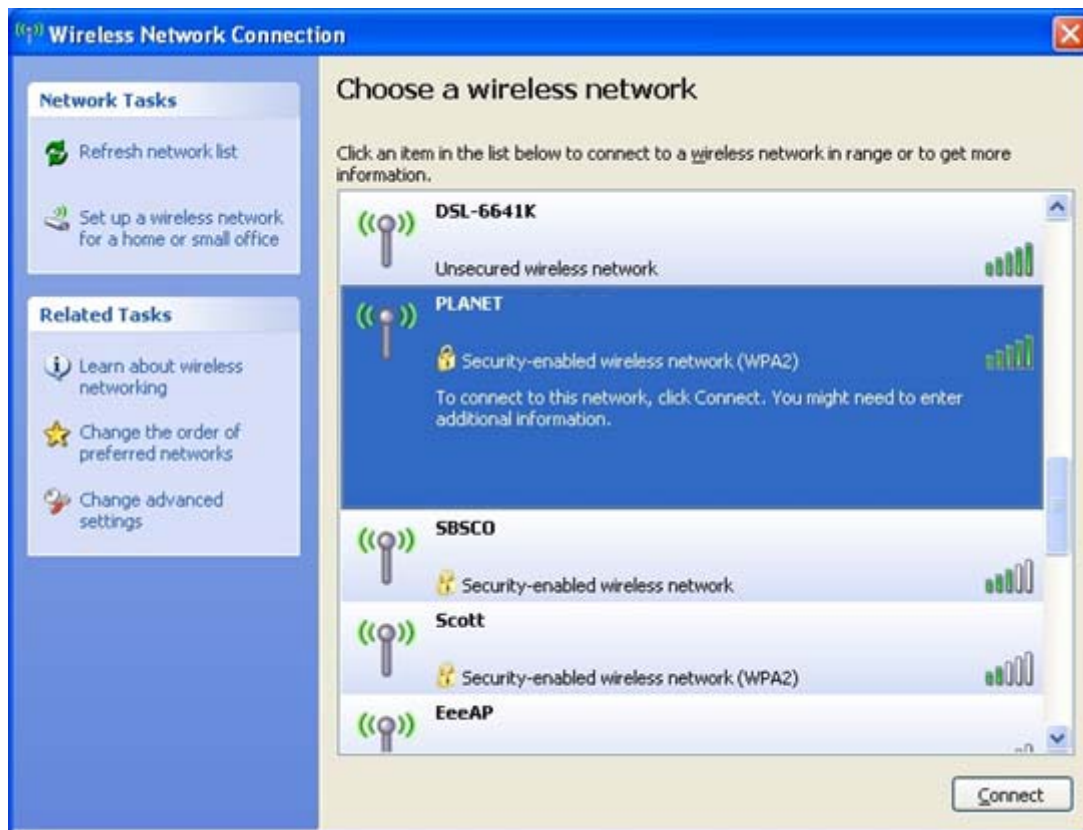


Figure 6-3 Choose a wireless network

Step 4: Enter the **encryption key** of the Wireless AP

- (1) The Wireless Network Connection box will appear
- (2) Enter the encryption key that is configured in [Section 5.6.2](#)
- (3) Click the [Connect] button



Figure 6-4 Enter the encryption key

Step 5: Check if “**Connected**” is displayed

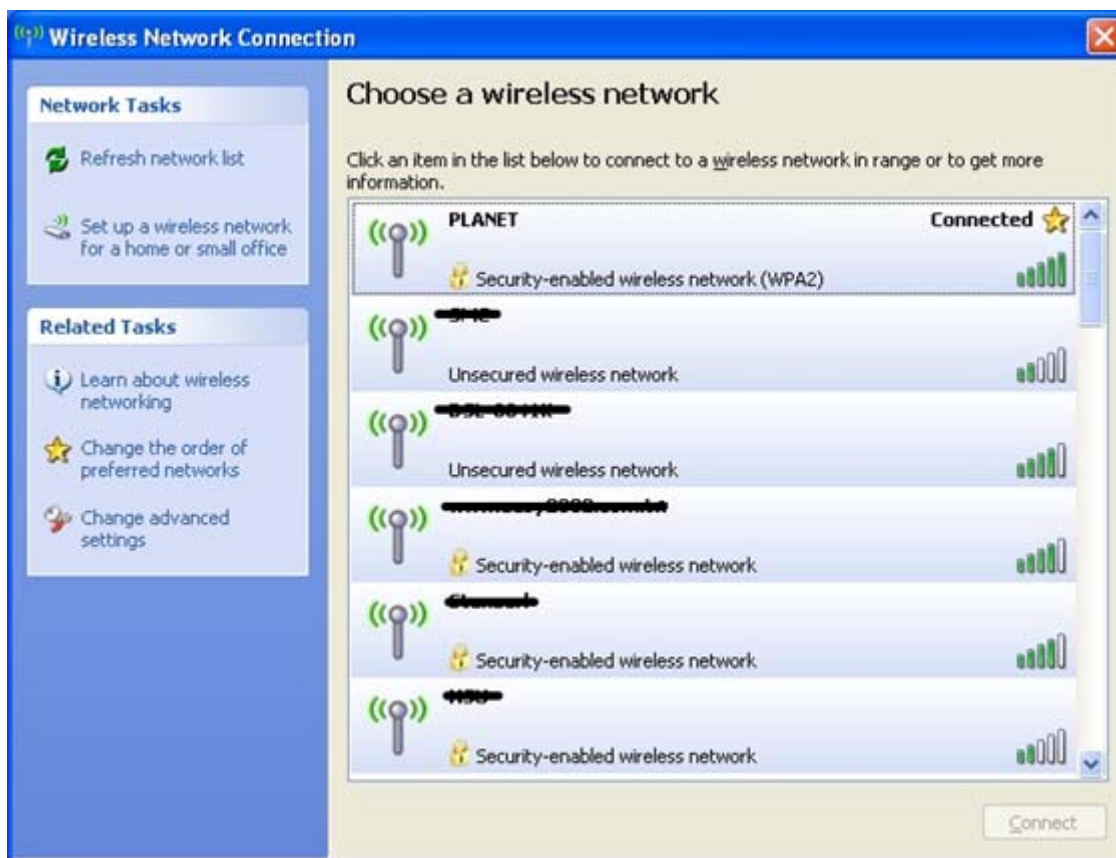


Figure 6-5 Wireless Network Connected



Note

Some laptops are equipped with a “Wireless ON/OFF” switch for the internal wireless LAN. Make sure the hardware wireless switch is switch to “ON” position.

6.2 Windows 7 (WLAN AutoConfig)

WLAN AutoConfig service is built-in in Windows 7 that can be used to detect and connect to wireless network. This built-in wireless network connection tool is similar to wireless zero configuration tool in Windows XP.

Step 1: Right-click on the **network icon** displayed in the system tray



Figure 6-6 WLAN AutoConfig

Step 2: Highlight and select the wireless network (SSID) to connect

(1) Select SSID [PLANET]

(2) Click the [**Connect**] button



Figure 6-7 WLAN AutoConfig window



If you will be connecting to this Wireless AP in the future, check [**Connect automatically**].

Step 4: Enter the **encryption key** of the Wireless AP

- (1) The Connect to a Network box will appear
- (2) Enter the encryption key that is configured in [Section 5.6.2](#)
- (3) Click the [OK] button



Figure 6-8 WLAN AutoConfig – type the network security key

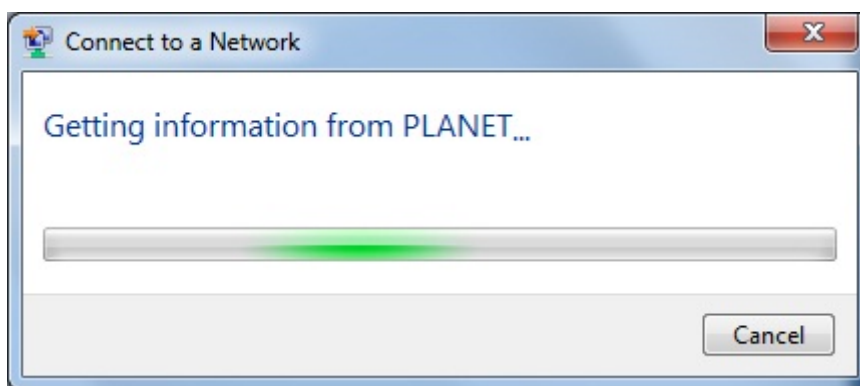


Figure 6-9 WLAN AutoConfig – connecting

Step 5: Check if “**Connected**” is displayed



Figure 6-10 WLAN AutoConfig – Connected

6.3 Mac OS X 10.x

Step 1: Right-click on the **network icon** displayed in the system tray

The AirPort Network Connection menu will appear



Figure 6-11 The AirPort Network Connection icon

Step 2: Highlight and select the wireless network (SSID) to connect

- (1) Select and SSID [PLANET]
- (2) Double-click on the selected SSID

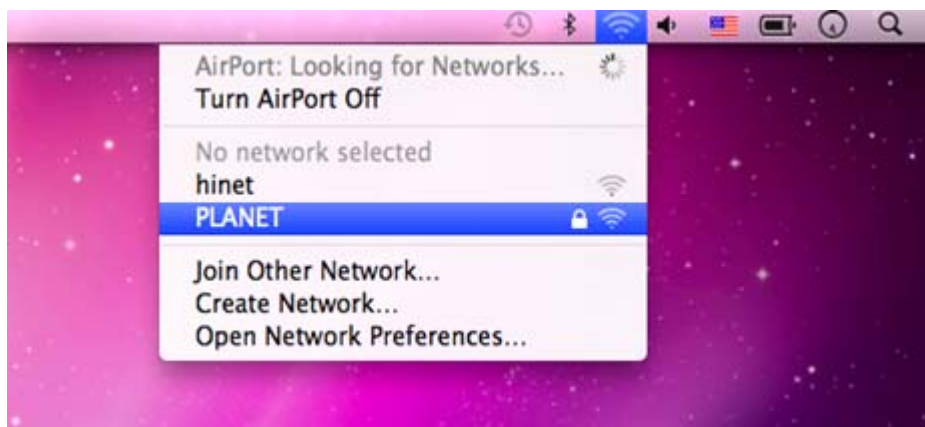


Figure 6-12 The AirPort Network Connection menu

Step 4: Enter the **encryption key** of the Wireless AP

- (1) Enter the encryption key that is configured in [Section 5.6.2](#)
- (2) Click the [OK] button



Figure 6-13 The AirPort Network Connection – enter password



If you will connect this Wireless AP in the future, check [**Remember this network**].

Step 5: Check if the AirPort is connected to the selected wireless network.

If “Yes”, then there will be a “check” symbol in the front of the SSID.

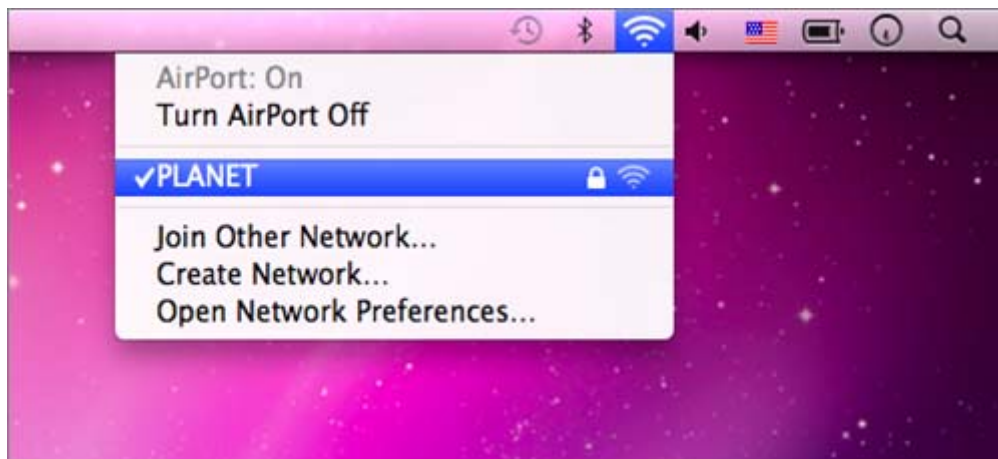


Figure 6-14 The AirPort Network Connection – connected

6.4 iPhone / iPod Touch / iPad

Step 1: Tap the [Settings] icon displayed in the home screen

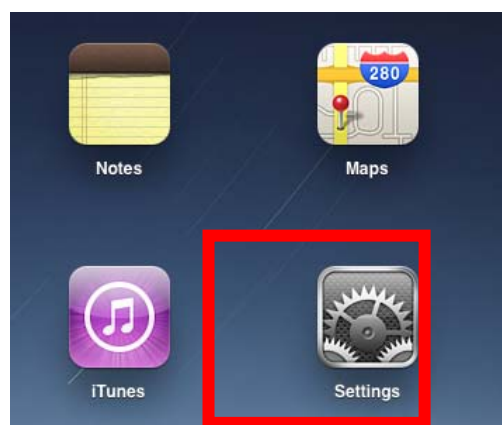


Figure 6-15 The Wi-Fi Settings in iPhone/iPod Touch/iPad

Step 2: Check Wi-Fi setting and select the available wireless network

(1) Tap [General] \ [Network]

(2) Tap [Wi-Fi]

If this is the first time to connect to the Wireless AP, it should show “Not Connected”.

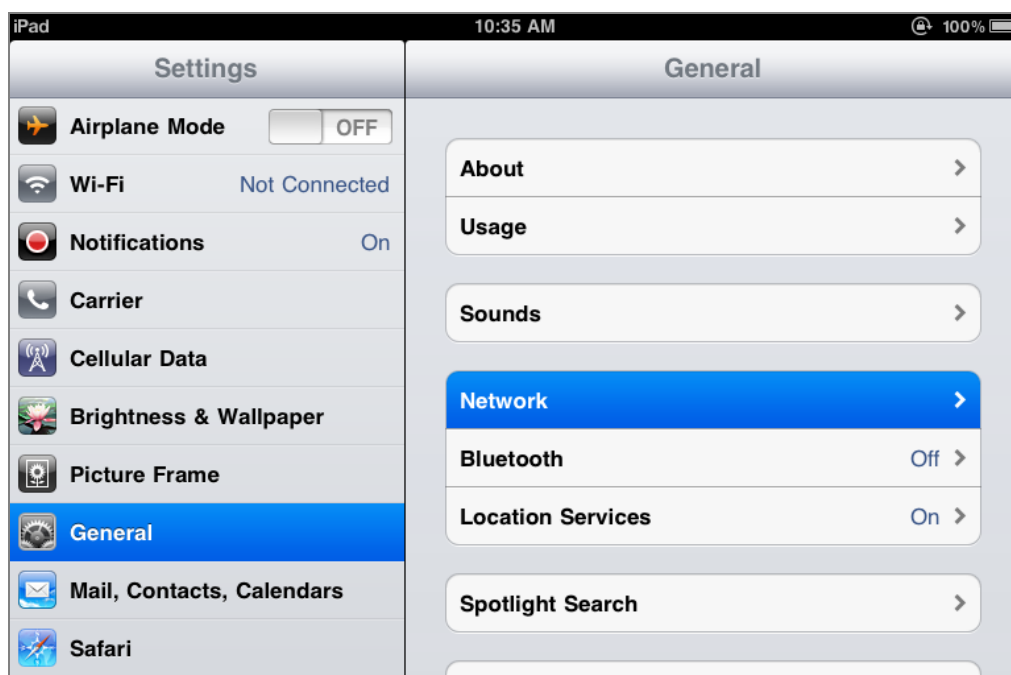


Figure 6-16 General Settings

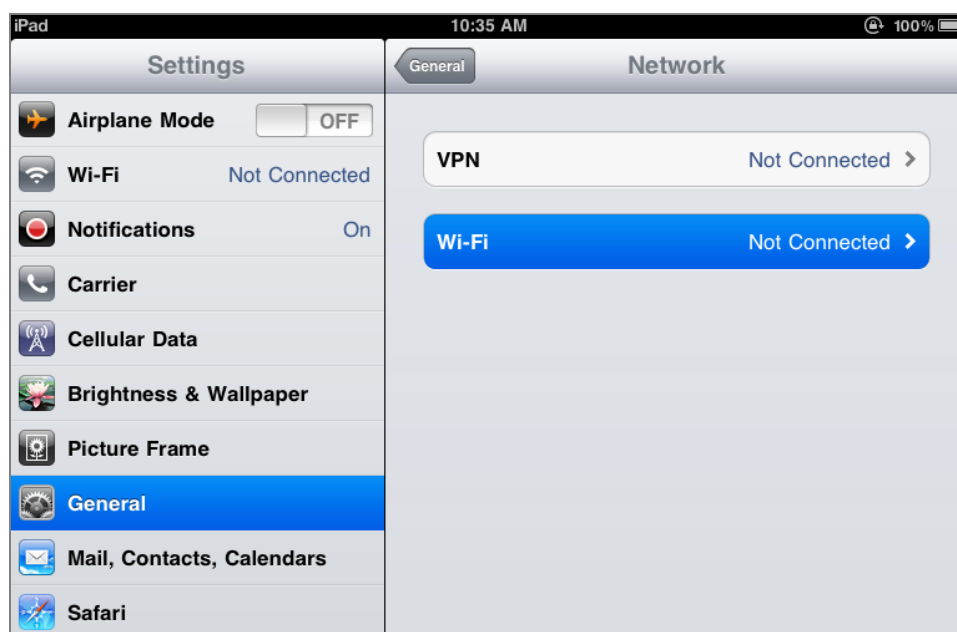


Figure 6-17 General Settings – Not Connected

Step 3: Tap the target wireless network (SSID) in “Choose a Network...”

- (1) Turn on Wi-Fi by tapping “Wi-Fi”
- (2) Select SSID [PLANET]



Figure 6-18 General Settings – Wi-Fi On

Step 4: Enter the **encryption key** of the Wireless AP

- (1) The password input screen will be displayed
- (2) Enter the encryption key that is configured in [Section 5.6.2](#)
- (3) Tap the **[Join]** button

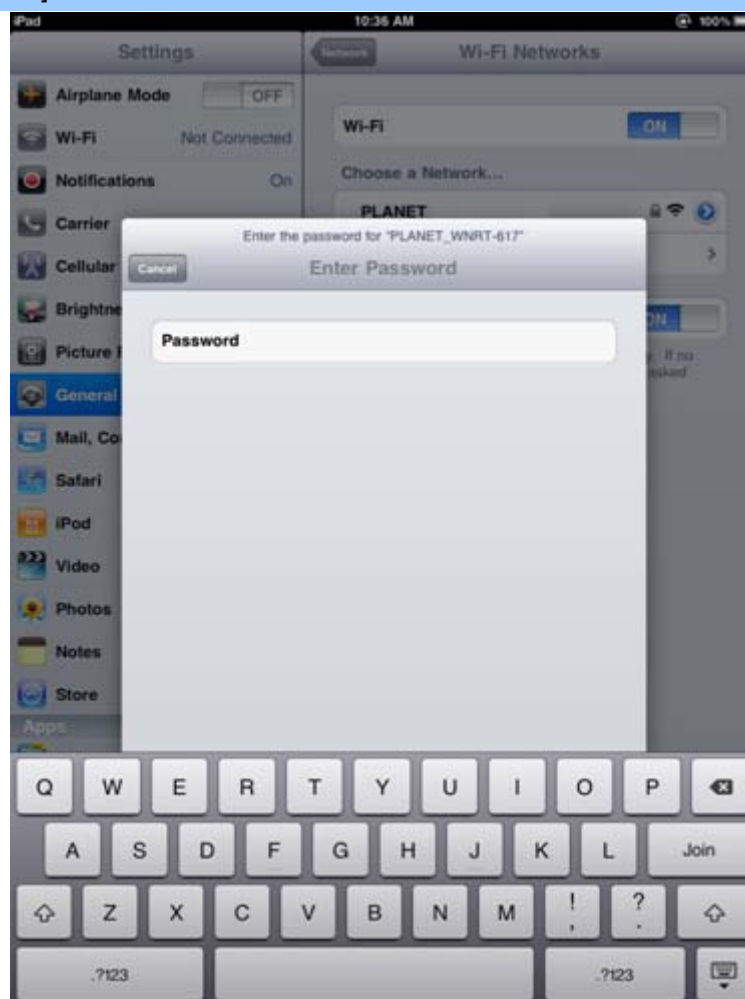


Figure 6-19 General Settings – Enter password

Step 5: Check if the iDevice is connected to the selected wireless network.

If “Yes”, then there will be a “check” symbol in the front of the SSID.

**Figure 6-20** General Settings – Wi-Fi Network Connected

Appendix A: Planet Smart Discovery Utility

To easily list the device in your Ethernet environment, the Smart Discovery Utility from user's manual CD-ROM is an ideal solution.

The following installation instructions guide you to running the Smart Discovery Utility.

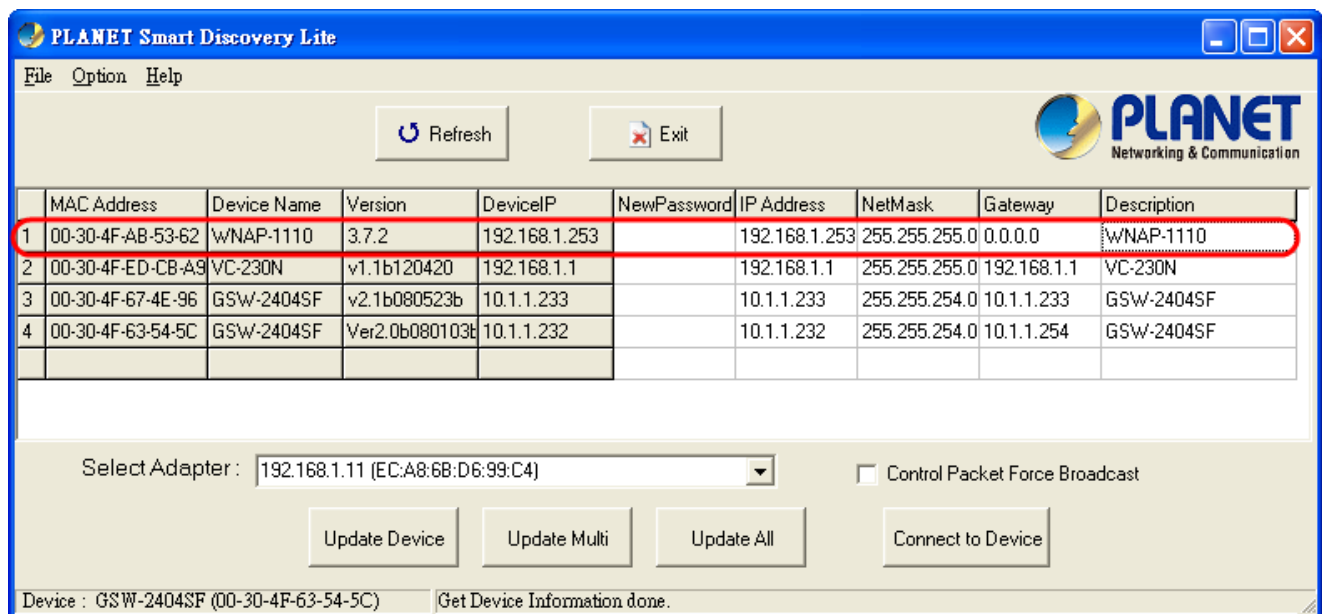
Step 1: Deposit the **Planet Smart Discovery Utility** in the administrator PC.

Step 2: Run this utility.



Planet_Utility.exe

Step 3: Click **"Refresh"** button for current connected devices in the discovery list as shown in the following screen.



Step 4: Navigate to the device, and then click **"Connect to Device"** button to connect to its Web configuration page.



1. Before connecting to device, please ensure your network adapter has been configured to the IP address in the same subnet.
2. The fields in white background can be modified directly, and then you can apply the new setting by clicking the **"Update Device"** button.

Appendix B: Factory Default Settings

Item	Default Value
Common Default Settings	
Username	admin
Password	admin
IP Address	192.168.1.253
Subnet Mask	255.255.255.0
Wireless	
SSID	WNAP-1110
Wireless Security	PIN Code (refer to the label on the bottom of the WNAP-1110.)
Wireless MAC Address Filtering	Disable
DHCP	
DHCP Server	Disable
Start IP Address	192.168.1.100
End IP Address	192.168.1.199
Address Lease Time	120 minutes (Range:1 ~ 2880 minutes)
Default Gateway (optional)	0.0.0.0
Primary DNS (optional)	0.0.0.0
Secondary DNS (optional)	0.0.0.0

Appendix C: Troubleshooting

If you found the AP is working improperly or stop responding to you, please read this troubleshooting first before contacting the Planet Tech Support for help.. Some problems can be solved by yourself within a very short time.

Scenario	Solution
The AP is not responding to me when I want to access it by web browser.	<ol style="list-style-type: none"> Please check the connection of the power cord and the Ethernet cable of this AP. All cords and cables should be correctly and firmly inserted to the AP. If all LEDs on this AP are off, please check the status of power adapter, and make sure it is correctly powered. You must use the same IP address section which AP uses. Are you using MAC or IP address filter? Try to connect the AP by another computer and see if it works; if not, please reset the AP to the factory default settings (pressing 'reset' button for over 10 seconds). Set your computer to obtain an IP address automatically (DHCP), and see if your computer can get an IP address. If you did a firmware upgrade and this happens, contact the Planet Tech Support for help. If all the solutions above don't work, contact the Planet Tech Support for help.
I can't get connected to the Internet.	<ol style="list-style-type: none"> Check the Internet connection status from the router that is connected with the AP. Please be patient, sometime Internet is just that slow. If you have connected a computer to Internet directly before, try to do that again, and check if you can get connected to Internet with your computer directly attached to the device provided by your Internet service provider. Check PPPoE / L2TP / PPTP user ID and password in your router again. Call your Internet service provider to check if there's something wrong with their service. If you just can't connect to one or more website, but you can still use other internet services, please check URL/Keyword filter. Try to reset the AP and try again later. Reset the device provided by your Internet service provider, too. Try to use IP address instead of host name. If you can use IP address to communicate with a remote server, but can't use host name, please check DNS setting.

I can't locate my AP by my wireless device.	<ul style="list-style-type: none"> a. 'Broadcast ESSID' set to off? b. The antenna is properly secured. c. Are you too far from your AP? Try to get closer. d. Please remember that you have to input ESSID on your wireless client manually, if ESSID broadcast is disabled.
File download is very slow or breaks frequently.	<ul style="list-style-type: none"> a. Are you using QoS function? Try to disable it and try again. b. Internet is slow sometimes, so be patient. c. Try to reset the AP and see if it's better after that. d. Try to know what computers do on your local network. If someone's transferring big files, other people will think Internet is really slow. e. If this never happens before, call you Internet service provider to know if there is something wrong with their network.
I can't log into the web management interface; the password is wrong.	<ul style="list-style-type: none"> a. Make sure you're connecting to the correct IP address of the AP. b. Password is case-sensitive. Make sure the 'Caps Lock' light is not illuminated. c. If you really forget the password, do a hard reset.
The AP becomes hot	<ul style="list-style-type: none"> a. This is not a malfunction if you can keep your hand on the AP's case. b. If you smell something wrong or see the smoke coming out from AP or A/C power adapter, please disconnect the AP and A/C power adapter from utility power (make sure it's safe before you're doing this!), and call your dealer of purchase for help.

Appendix D: Specifications

Product	WNAP-1110 150Mbps 802.11n Wireless Range Extender	
Hardware Specifications		
Interface	PoE LAN Port:	1 x 10/100Mbps Auto MDI/MDI-X RJ45 port ※ Passive PoE/PD Port
PoE	Passive PoE (Up to 30 meters)	
Antenna	Detachable 4dBi antenna x1	
Button	WPS Button	Press the WPS button on the front panel of the device.
	Reset Button	Press for about 5 seconds to reset the device to factory default.
LED Indicators	PWR/SYS/LAN/WLAN/WPS LED	
Material	Plastic	
Dimensions (W x D x H)	174 x 110 x 23 mm	
Weight	250g	
Power Requirements	9V DC, 0.85A or Passive PoE	
Power Consumption	2W (max.)	
Wireless interface Specifications		
Standard	Compliance with IEEE 802.11b/g/n	
Frequency Band	2.4~2.4835GHz	
Extended Frequency	DSSS	
Modulation Type	DBPSK, DQPSK, QPSK, CCK and OFDM (BPSK/ QPSK/ 16-QAM/ 64-QAM)	
Data Transmission Rates	IEEE 802.11n: up to 150Mbps(Dynamic)	
	IEEE 802.11g: 54/48/36/24/18/12/9/6Mbps (Dynamic)	
	IEEE 802.11b: 11/5.5/2/1Mbps (Dynamic)	
Frequency Band	America/ FCC: 2.414~2.462GHz (11 Channels)	
	Europe/ ETSI: 2.412~2.472GHz (13 Channels)	
	Japan/ TELEC: 2.412~2.484GHz (14 Channels)	
Channel Width	20 or 40MHz	
Transmission Distance	Indoor up to 100m	
	Outdoor up to 300m (it is limited to the environment)	
Max. RF Power (Intentional Radiator)	IEEE 802.11b: 18dBm	
	IEEE 802.11g: 15dBm	
	IEEE 802.11n: 15dBm	
Receive Sensitivity	130M: -70dBm@10% PER	
	108M: -72dBm@10% PER	
	54M: -74dBm@10% PER	
	11M: -86dBm@8% PER	
	6M: -91dBm@10% PER	
	1M: -91dBm@8% PER	

Appendix E: Glossary

- **802.11n** - 802.11n builds upon previous 802.11 standards by adding MIMO (multiple-input multiple-output). MIMO uses multiple transmitter and receiver antennas to allow for increased data throughput via spatial multiplexing and increased range by exploiting the spatial diversity, perhaps through coding schemes like Alamouti coding. The Enhanced Wireless Consortium (EWC) [3] was formed to help accelerate the IEEE 802.11n development process and promote a technology specification for interoperability of next-generation wireless local area networking (WLAN) products.
- **802.11b** - The 802.11b standard specifies a wireless networking at 11 Mbps using direct-sequence spread-spectrum (DSSS) technology and operating in the unlicensed radio spectrum at 2.4GHz, and WEP encryption for security. 802.11b networks are also referred to as Wi-Fi networks.
- **802.11g** - specification for wireless networking at 54 Mbps using direct-sequence spread-spectrum (DSSS) technology, using OFDM modulation and operating in the unlicensed radio spectrum at 2.4GHz, and backward compatibility with IEEE 802.11b devices, and WEP encryption for security.
- **DHCP (Dynamic Host Configuration Protocol)** - A protocol that automatically configure the TCP/IP parameters for the all the PC(s) that are connected to a DHCP server.
- **DNS (Domain Name System)** - An Internet Service that translates the names of websites into IP addresses.
- **Domain Name** - A descriptive name for an address or group of addresses on the Internet.
- **SSID - A Service Set Identification** is a thirty-two character (maximum) alphanumeric key identifying a wireless local area network. For the wireless devices in a network to communicate with each other, all devices must be configured with the same SSID. This is typically the configuration parameter for a wireless PC card. It corresponds to the ESSID in the wireless Access Point and to the wireless network name.
- **WEP (Wired Equivalent Privacy)** - A data privacy mechanism based on a 64-bit or 128-bit or 152-bit shared key algorithm, as described in the IEEE 802.11 standard.
- **Wi-Fi** - A trade name for the 802.11b wireless networking standard, given by the Wireless Ethernet Compatibility Alliance (WECA, see <http://www.wi-fi.net>), an industry standards group promoting interoperability among 802.11b devices.
- **WLAN (Wireless Local Area Network)** - A group of computers and associated devices communicate with each other wirelessly, which network serving users are limited in a local area.

EC Declaration of Conformity

For the following equipment:

*Type of Product : 150Mbps 802.11n Wireless Range Extender
*Model Number : WNAP-1110

* Produced by:

Manufacturer's Name : **Planet Technology Corp.**
Manufacturer's Address: 10F., No.96, Minquan Rd., Xindian Dist.,
New Taipei City 231, Taiwan (R.O.C.)

is herewith confirmed to comply with the requirements set out in the Council Directive on the Approximation of the Laws of the Member States relating to 1999/5/EC R&TTE. For the evaluation regarding the R&TTE the following standards were applied:

EN 60950-1	(2006 + A11: 2009 + A1:2010 + A12: 2011)
EN 300 328 V1.7.1	(2006-10)
EN 301 489-1 V1.9.2	(2011-09)
EN 301 489-17 V2.2.1	(2012-09)
EN 62311	(2008)

Responsible for marking this declaration if the:

☒ Manufacturer ☐ Authorized representative established within the EU

Authorized representative established within the EU (if applicable):

Company Name: Planet Technology Corp.

Company Address: 10F., No.96, Minquan Rd., Xindian Dist., New Taipei City 231, Taiwan (R.O.C.)

Person responsible for making this declaration

Name, Surname Tom Shih

Position / Title : Product Manager

Taiwan
Place

24th Jan., 2014
Date


Legal Signature

PLANET TECHNOLOGY CORPORATION

e-mail: sales@planet.com.tw http://www.planet.com.tw

10F., No.96, Minquan Rd., Xindian Dist., New Taipei City, Taiwan, R.O.C. Tel:886-2-2219-9518 Fax:886-2-2219-9528

EC Declaration of Conformity

English	Hereby, PLANET Technology Corporation , declares that this 150Mbps 802.11n Wireless Range Extender is in compliance with the essential requirements and other relevant provisions of Directive 1999/5/EC.	Lietuviškai	Šiuo PLANET Technology Corporation ,, skelbia, kad 150Mbps 802.11n Wireless Range Extender tenkina visus svarbiausius 1999/5/EC direktyvos reikalavimus ir kitas svarbias nuostatas.
Česky	Společnost PLANET Technology Corporation , tímto prohlašuje, že tato 150Mbps 802.11n Wireless Range Extender splňuje základní požadavky a další příslušná ustanovení směrnice 1999/5/EC.	Magyar	A gyártó PLANET Technology Corporation , kijelenti, hogy ez a 150Mbps 802.11n Wireless Range Extender megfelel az 1999/5/EK irányelv alapkövetelményeinek és a kapcsolódó rendelkezéseknek.
Dansk	PLANET Technology Corporation , erklærer herved, at følgende udstyr 150Mbps 802.11n Wireless Range Extender overholder de væsentlige krav og øvrige relevante krav i direktiv 1999/5/EF	Malti	Hawnhekk, PLANET Technology Corporation , jiddikjara li dan 150Mbps 802.11n Wireless Range Extender jikkonforma mal-htigijiet essenzjali u ma provvedimenti oħrajn rilevanti li hemm fid-Direttiva 1999/5/EC
Deutsch	Hiermit erklärt PLANET Technology Corporation , dass sich dieses Gerät 150Mbps 802.11n Wireless Range Extender in Übereinstimmung mit den grundlegenden Anforderungen und den anderen relevanten Vorschriften der Richtlinie 1999/5/EG befindet". (BMW i)	Nederlands	Hierbij verklaart , PLANET Technology Corporation , dat 150Mbps 802.11n Wireless Range Extender in overeenstemming is met de essentiële eisen en de andere relevante bepalingen van richtlijn 1999/5/EG
Eesti keeles	Käesolevaga kinnitab PLANET Technology Corporation , et see 150Mbps 802.11n Wireless Range Extender vastab Euroopa Nõukogu direktiivi 1999/5/EC põhinõuetele ja muudele olulistele tingimustele.	Polski	Niniejszym firma PLANET Technology Corporation , oświadcza, że 150Mbps 802.11n Wireless Range Extender spełnia wszystkie istotne wymagania i klauzule zawarte w dokumencie „Directive 1999/5/EC”.
Ελληνικά	<i>ΜΕ ΤΗΝ ΠΑΡΟΥΣΑ , PLANET Technology Corporation, ΔΗΛΩΝΕΙ ΟΤΙ ΑΥΤΟ 150Mbps 802.11n Wireless Range Extender ΣΥΜΜΟΡΦΩΝΕΤΑΙ ΠΡΟΣ ΤΙΣ ΟΥΣΙΩΔΕΙΣ ΑΠΑΙΤΗΣΕΙΣ ΚΑΙ ΤΙΣ ΛΟΙΠΕΣ ΣΧΕΤΙΚΕΣ ΔΙΑΤΑΞΕΙΣ ΤΗΣ ΟΔΗΓΙΑΣ 1999/5/ΕΚ</i>	Português	PLANET Technology Corporation , declara que este 150Mbps 802.11n Wireless Range Extender está conforme com os requisitos essenciais e outras disposições da Directiva 1999/5/CE.
Español	Por medio de la presente, PLANET Technology Corporation , declara que 150Mbps 802.11n Wireless Range Extender cumple con los requisitos esenciales y cualesquiera otras disposiciones aplicables o exigibles de la Directiva 1999/5/CE	Slovensky	Výrobca PLANET Technology Corporation , týmto deklaruje, že táto 150Mbps 802.11n Wireless Range Extender je v súlade so základnými požiadavkami a ďalšími relevantnými predpismi smernice 1999/5/EC.
Français	Par la présente, PLANET Technology Corporation , déclare que les appareils du 150Mbps 802.11n Wireless Range Extender sont conformes aux exigences essentielles et aux autres dispositions pertinentes de la directive 1999/5/CE	Slovensko	PLANET Technology Corporation , s tem potrjuje, da je ta 150Mbps 802.11n Wireless Range Extender skladen/a z osnovnimi zahtevami in ustreznimi določili Direktive 1999/5/EC.
Italiano	Con la presente , PLANET Technology Corporation , dichiara che questo 150Mbps 802.11n Wireless Range Extender è conforme ai requisiti essenziali ed alle altre disposizioni pertinenti stabilite dalla direttiva 1999/5/CE.	Suomi	PLANET Technology Corporation , vakuuttaa täten että 150Mbps 802.11n Wireless Range Extender tyyppinen laite on direktiivin 1999/5/EY oleellisten vaatimusten ja sitä koskevien direktiivin muiden ehtojen mukainen.
Latviski	Ar šo PLANET Technology Corporation , apliecina, ka šī 150Mbps 802.11n Wireless Range Extender atbilst Direktīvas 1999/5/EK pamatprasībām un citiem atbilstošiem noteikumiem.	Svenska	Härmed intygar, PLANET Technology Corporation , att denna 150Mbps 802.11n Wireless Range Extender står i överensstämmelse med de väsentliga egenskapskrav och övriga relevanta bestämmelser som framgår av direktiv 1999/5/EG.