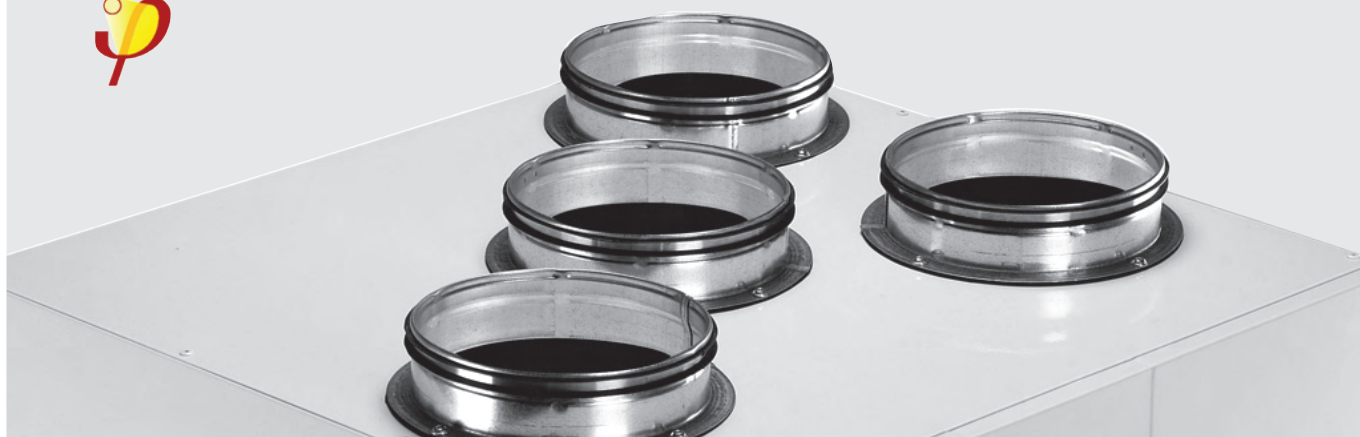


Danfoss Air Catalogue

Summary of Danfoss Air

- The "Plug & Play" concept ensures a quick installation.
- Integrated moisture sensors for precision need-controlled ventilation and automatic quick ventilation of the room during baths.
- Automatic system recognition and self-configuration of Air accessories such as heating surfaces.
- High efficiency as a result of a large counter current exchange unit in aluminium
- Optimal internal duct routing along with highly efficient EC fans entail very low energy consumption.
- Low sound level.
- Remote control (Z wave communication) in an elegant design.
- Shows all relevant temperature information and the actual relative air humidity in the house.
- An efficient summer by-pass function, where the fresh air is drawn through the unit without heat exchanging, is standard for all units except w¹.
- Air output from 0-500 m³/h.
- DANFOSS AIR UNITS are certified for use in passive houses by Passivhaus Institute in Darmstadt, Germany.
- DANFOSS AIR UNITS are certified in accordance with Deutsches Institut für Bautechnik's DIBT/LÜ-A 20 standard.



Danfoss Air units, controls and fittings

Danfoss Air w¹



Description:

Ventilation unit for wall mounting.

Air volume	0-180 m³/h at 100 Pa ext. pressure
Air volume, nominal	140 m³/h
Width	530 mm
Height	1042 mm
Depth	430 mm
Weight	37 kg
Air connector	Ø 125, 4 + option of bottom outlet (mix.)
Electrical connection	230 V, 50 Hz
Connection to condensation pipe	Ø19 soft plastic (for 3/4" pipe)

Ordering:

Code..... 089F0233

Danfoss Air w²



Description:

Ventilation unit for wall mounting.

Air volume	0-300 m³/h at 100 Pa ext. pressure
Air volume, nominal	220 m³/h
Width	590 mm
Height	1092 mm
Depth	580 mm
Weight	46 kg
Air connector	Ø 160, 4
Electrical connection	230 V, 50 Hz
Connection to condensation pipe	Ø19 soft plastic (for 3/4" pipe)

Ordering:

Code..... 089F0234

Danfoss Air a²



Description:

Ventilation unit for installing in non-heated rooms e.g. attic.

Air volume	0-300 m³/h at 100 Pa ext. pressure
Air volume, nominal	220 m³/h
Width	1180 mm
Height	600 mm
Depth	580 mm
Weight	50 kg
Air connector	Ø 160, 4
Electrical connection	230 V, 50 Hz
Connection to condensation pipe	Ø19 soft plastic (for 3/4" pipe)

Ordering:

Code..... 089F0231

Danfoss Air Dial



Description:

Wireless graphic operating panel for Danfoss Air Units. Communicates via Z wave. Uses 4 x AAA batteries. An installation and user manual is included in the literature pack for Danfoss Air Units.

Ordering:

Code..... 089F0257

Danfoss CCM module



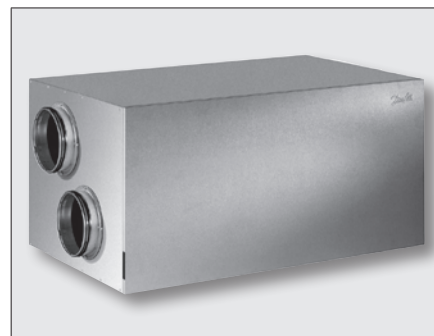
Description:

Pre-wired communication module for Danfoss Air Units. Contains wireless communication, Ethernet (RJ 45), mini USB plug and communication via modbus to the AIR unit. An installation and user manual is included in the literature pack for Danfoss Air Units.

Ordering:

Code..... 089F0258

Danfoss Air a³



Description:

Ventilation unit for installing in non-heated rooms e.g. attic.

Air volume	0-500 m³/h at 100 Pa ext. pressure
Air volume, nominal	350 m³/h
Width	1180 mm
Height	600 mm
Depth	780 mm
Weight	67 kg
Air connector	Ø 250, 4
Electrical connection	230 V, 50 Hz
Connection to condensation pipe	Ø19 soft plastic (for 3/4" pipe)

Ordering:

Code..... 089F0232

Geothermal heating surface GEO 250



Description:

The geothermal surface has two functions:

- In the winter it preheats the outdoor air so that the system is protected against icing up.
- In the summer it cools the outdoor air so that fresh, cool air is blown in. The typical air supply temperature will be 14-16°C depending on the outdoor temperature, soil conditions for the brine circuit, etc.

The geothermal surface is connected to a buried ground pipe in which brine (antifreeze) is circulated. The only power consumption required for this solution is for the circulation pump. The surface is supplied fully assembled incl. automation, two temperature sensors for duct fitting and the required cables. Plug'n'play installation - the system recognises and configures the surface automatically on connection.

The surface is fitted in the duct system on the outdoor side.

Width	600 mm
Height	335 mm
Depth	250 mm
Weight	6.3 kg
Duct system connector	Ø 250 mm
Power consumption	3-10 W
Electrical connection	230 V, 50 Hz

Ordering:

Code..... 089F0354

Water heating surface W-AH 250



Description:

Water heating surface for the heating of supply air (comfort safeguard).

The surface can also under special conditions (in a Passive house) work as the only heating source. Fitted in the duct system on the supply air side and connected to the house's central heating system. Supplied fully assembled with two temperature sensors, motor-driven control valve and control panel automation which automatically registers with Air Dial on connection.

The heating surface can typically raise the supply air temperature to up to 40-45°C (at 70/40°C).

Width	600 mm
Height	335 mm
Depth	250 mm
Weight	6.6 kg
Duct system connector	Ø 250 mm
Power consumption	3-10 W
Electrical connection	230 V, 50 Hz

Ordering:

Code..... 089F0355

Electrical preheating surface EL-PH



Description:

Electrical preheating surface to prevent system icing up.

Fitted in the duct system on the outdoor side and can be supplied in Ø125-900W / Ø160-1500W / Ø250-2100W respectively. The surfaces are built-in double protection with overheating and are supplied with a complete automation box for connection by certified electrician. Plug'n'play installation - the system recognises and configures the surface automatically on connection. The output is accurately controlled by a solid state relay.

Duct system connector	Ø 125 mm	Ø 160 mm	Ø 250 mm
Recessed length	278 mm		
Weight	2.4 kg	3.2 kg	4.6 kg
Output	900 W	1500 W	2100 W
Max. power	3.9 A	6.5 A	9.1 A
Electrical connection*	230 V, 50 Hz		

* We recommend that the surfaces are supplied from a separate group.

900 W, Ø 125 mm

Ordering:

Code..... 089F0356

1500 W, Ø 160 mm

Ordering:

Code..... 089F0357

2100 W, Ø 250 mm

Ordering:

Code..... 089F0358

Electrical afterheating surface



Description:

Electrical afterheating surface for heating the supply air (comfort safeguard). Fitted in the duct system on the supply side and can be supplied in Ø125-900W / Ø160-1500W / Ø250-2100W respectively. The surfaces are built-in double protection with overheating and are supplied with a complete automation box for connection by certified electrician. Plug'n'play installation - the system recognises and configures the surface automatically on connection. The output is accurately controlled by a solid state relay.

Duct system connector	Ø 125 mm	Ø 160 mm	Ø 250 mm
Recessed length	278 mm		
Weight	2.4 kg	3.2 kg	4.6 kg
Output	900 W	1500 W	2100 W
Max. power	3.9 A	6.5 A	9.1 A
Electrical connection*	230 V, 50 Hz		

* We recommend that the surfaces are supplied from a separate group.

900 W, Ø 125 mm

Ordering:

Code..... 089F0359

1500 W, Ø 160 mm

Ordering:

Code..... 089F0360

2100 W, Ø 250 mm

Ordering:

Code..... 089F0361

Standard filter set



Description:

Standard filter set consisting of two G4 cartridge filters. Pleated filter in thermofixed polyethylene - efficiently filters particles down to 10 µm. Filter class is given in accordance with EN 779.

Standard filter set for Danfoss Air w¹ unit

Ordering:

Code..... 089F0238

Standard filter set for Danfoss Air w² unit

Ordering:

Code..... 089F0239

Standard filter set for Danfoss Air a² unit

Ordering:

Code..... 089F0236

Standard filter set for Danfoss Air a³ unit

Ordering:

Code..... 089F0237

Pollen filter set



Description:

Pollen filter set consisting of one standard G4 cartridge filter for the exhaust air and one F7 pollen filter for the supply air (the pollen filter efficiently filters particles down to 5 µm). Filter classes are given in accordance to EN 779.

Pollen filter set for Danfoss Air w¹ unit

Ordering:

Code..... 089F0242

Pollen filter set for Danfoss Air w² unit

Ordering:

Code..... 089F0243

Pollen filter set for Danfoss Air a² unit

Ordering:

Code..... 089F0240

Pollen filter set for Danfoss Air a³ unit

Ordering:

Code..... 089F0241

Danfoss Air controls and fittings

Siphon for Danfoss Air unit



Description:

Box siphon with $\frac{3}{4}$ " reinforced tube to be connected to the unit and $\frac{3}{4}$ " threaded (union) to be connected to the outlet. White RAL 9010 for wall mounting.
Can be used with both w and a models.

Ordering:

Code..... 089F0262

Installer kit



Description:

The installer kit has been developed to help installers when installing Danfoss Air Units. The kit contains 1 Gb USB plug along with Danfoss Air software and 1 metre mini usb->usb cable to connect the CCM module to the portable computer (requires Windows XP or Vista).

The installer kit guides the installer through the installation procedure step by step and gives tips and good advice along the way concluding with a well-documented report of settings.

Ordering:

Code..... 089F0235

Literature pack



Description:

The pack contains the Danish, English and German versions of the following literature:

- User manual (for final users)
- Installation manual (for installers)

The pack is always supplied with the Danfoss Air Unit, but can be ordered separately.

Ordering:

Code..... 089F0247

For generations now, Danfoss has been delivering solutions used in all aspects of heating and cooling, such as valves, thermostats, pumps and highly advanced control systems.

The Danfoss Group consists of a global network of sales companies, agents and distributors, and Danfoss products are sold, serviced and valued around the world. Danfoss products also play an important role when it comes to

creating optimal indoor climate and comfort. This has always been our legacy, and the new Danfoss Air system is set to carry on this proud tradition.

Danfoss A/S

Ulvehavevej 61
7100 Vejle

Tel. +45 74 88 85 00
Fax +45 74 88 86 03
www.danfoss.com
www.air-danfoss.com

Danfoss can accept no responsibility for possible errors in catalogues, brochures and other printed material. Danfoss reserves the right to alter its products without notice. This also applies to products already on order provided that such alterations can be made without subsequential changes being necessary in specifications already agreed. All trademarks in this material are property of the respective companies. Danfoss and the Danfoss logotype are trademarks of Danfoss A/S. All rights reserved.
