

UniWide is the UNSW Campus Wireless Network for UNSW students and staff. It offers fast, secure wireless network connectivity from a wide range of locations across UNSW's campuses. Wireless access is available to all current staff and students. UniWide can be accessed via any WiFi-enabled laptop or mobile device that supports WPA2 Enterprise wireless security.

### System requirements & prerequisites

- To access UniWide, you will need a properly configured 802.11a/b/g/n (WiFi) compatible notebook computer or mobile device that supports WPA2 Enterprise wireless security. Most new notebooks and many new mobile devices meet these requirements.

#### Index

1. Activate your laptop's wireless connectivity [page 1]
2. Configure your wireless connection for UniWide [page 1]
3. Connect to UniWide [page 5]

**UniWide requires zPass to access - UniPass will no longer work on this service**

For more information about zPass, please visit [www.it.unsw.edu.au/students/zpass/](http://www.it.unsw.edu.au/students/zpass/)

## UniWide setup instructions

### Step 1 - Activate your laptop's wireless connectivity



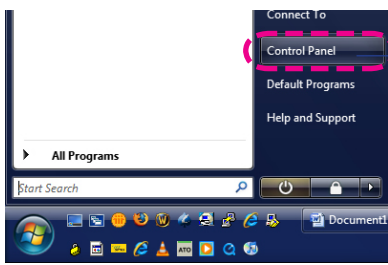
Methods of turning wireless networking on and off differ from computer to computer. Some laptops have a key displaying the wireless symbol (left), while others require a manual connection method. If in doubt, consult your laptop's user manual.

### Step 2 - Configure your wireless connection for UniWide

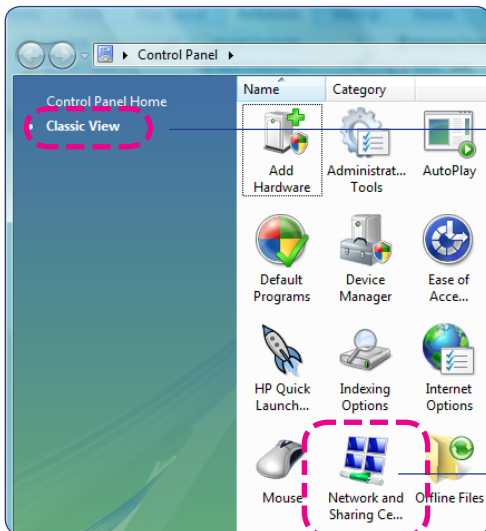


*You need to be on campus near a UniWide hotspot such as a library, computer lab or common area to configure your computer. If unsure look for the UniWide logo (above)*

*or view [www.it.unsw.edu.au/students/uniwide/coverage.html](http://www.it.unsw.edu.au/students/uniwide/coverage.html) for hotspot locations on campus*

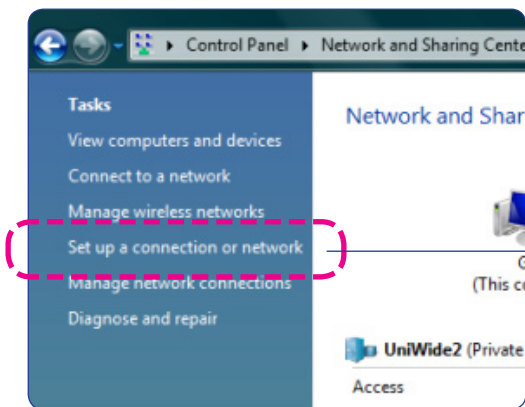
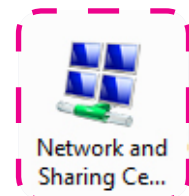


1. Click **Start > Control Panel**

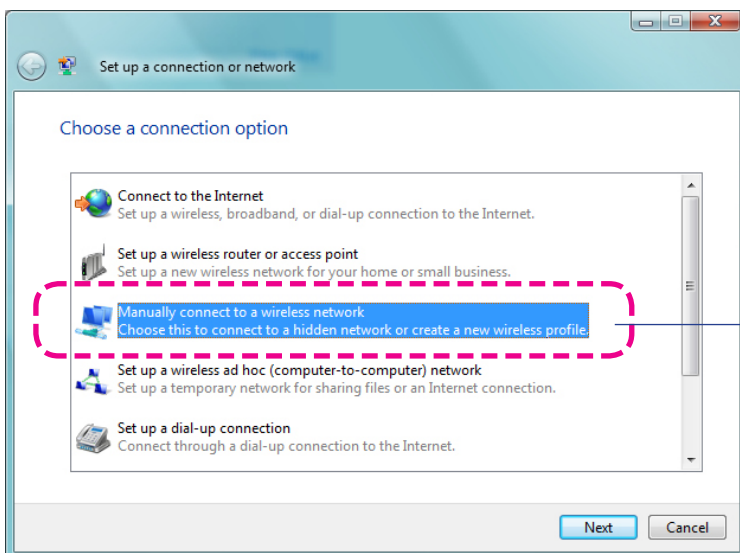


2. Click on **Classic View**

3. Click on the **Network and Sharing Centre** icon

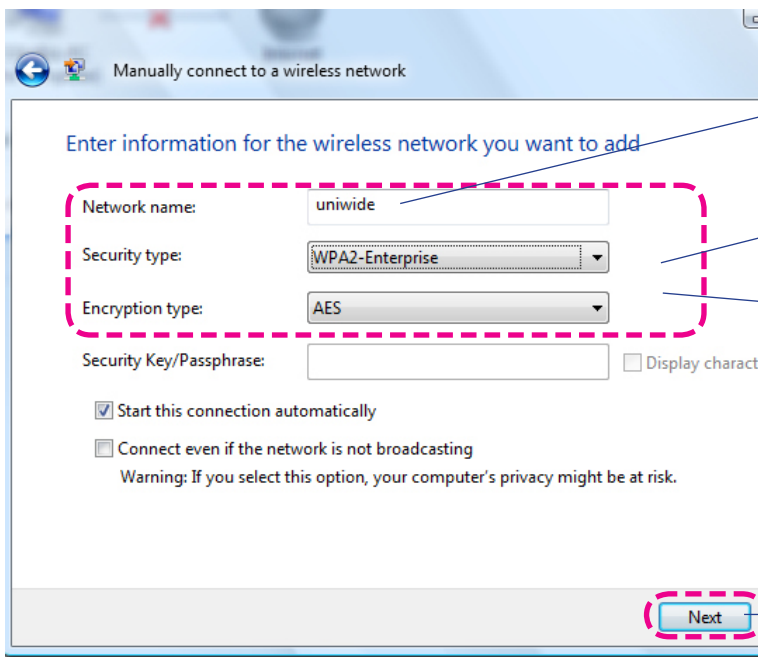


4. Under **Tasks**, click **Set up a connection or network**



5. Click **Manually connect to a wireless network**

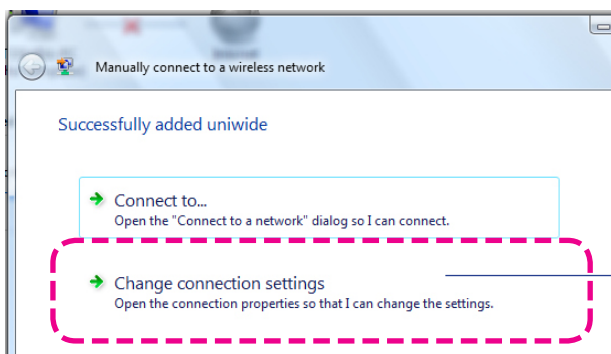
*Continued over...*



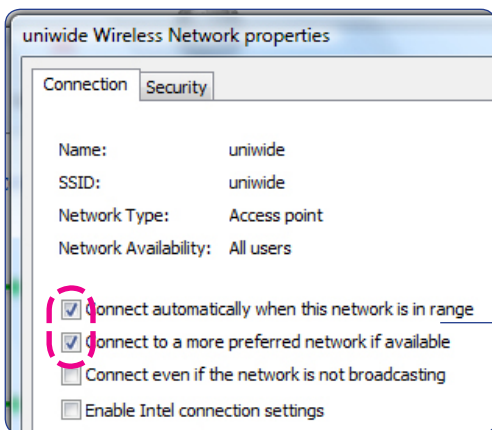
6. Type **uniwide** (in lowercase) in the **Network name** field

- Select **WPA2-Enterprise** from the **Security Type** drop-down menu.
- Select **AES** from the **Encryption type** drop down menu

7. Click **Next**

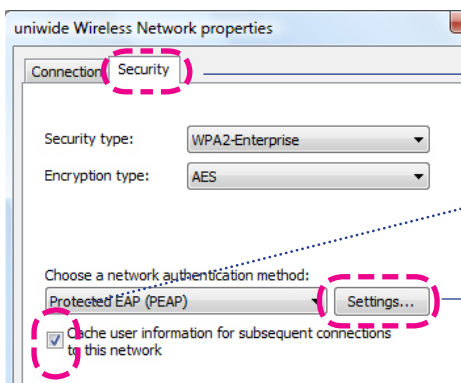


8. Click **Change connection settings**



9. Ensure the following are checked:

- **Connect automatically when this network is in range**
- **Connect to a more preferred network if available**

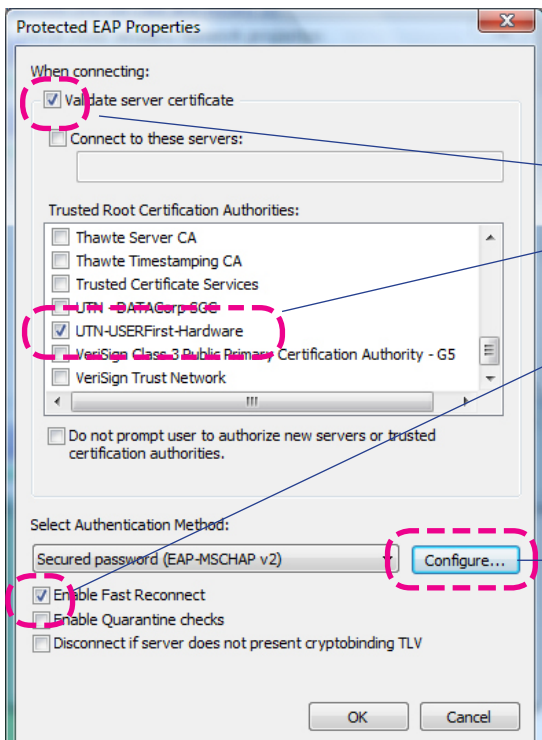


10. Click on the **Security** tab

- Check the **Cache user information...** (below Protected EAP drop-down menu)

11. Click on the **Settings**

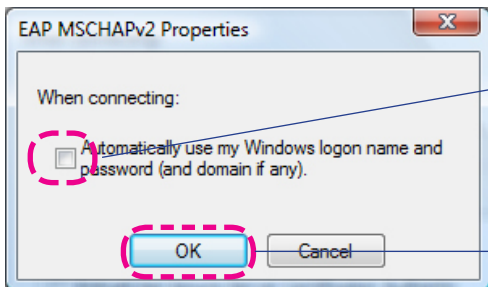
*Continued over...*



12. Ensure the following are checked:

- **Validate server certificate**
- **UTN-USERFirst-Hardware** (scroll down to locate)
- **Enable Fast Reconnect**

13. Click the **Configure** button

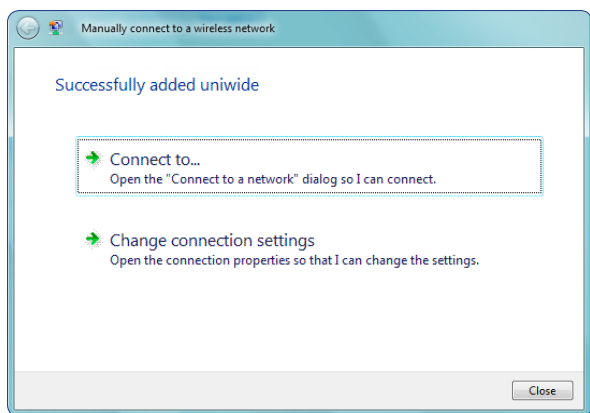


14. Ensure this is NOT checked

15. Click **OK** to close this window

16. Click **OK** to close the previous two windows

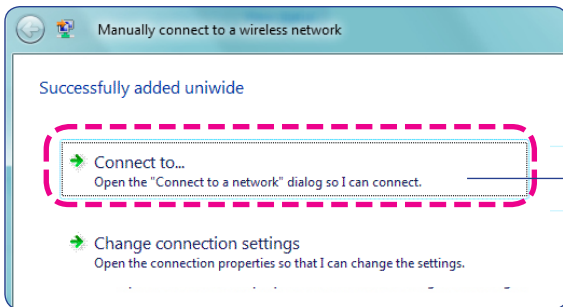
When you see the **Manually Connect to a wireless network** window below - go to the *Connect to UniWide steps ovelaf*



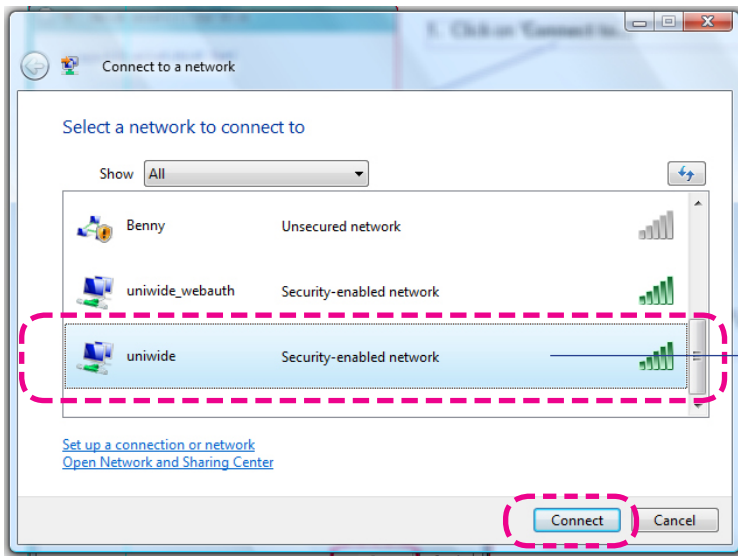
**You have configured your laptop to connect to UniWide**

Continued over...

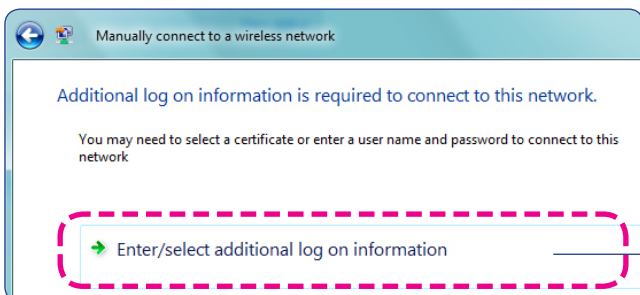
## Step 3 - Connect to UniWide



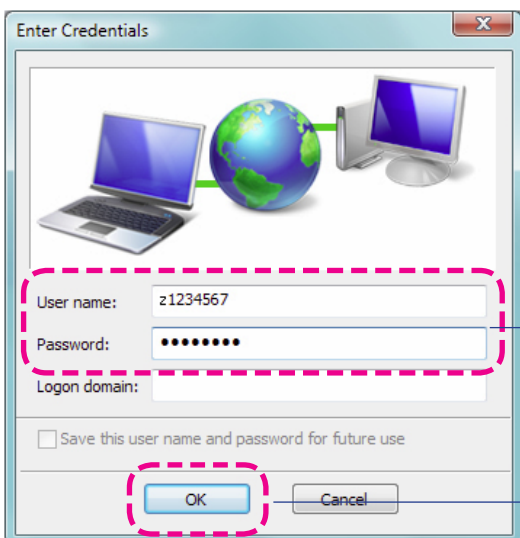
1. Click **Connect to...**



2. Select **uniwide** then click **Connect**



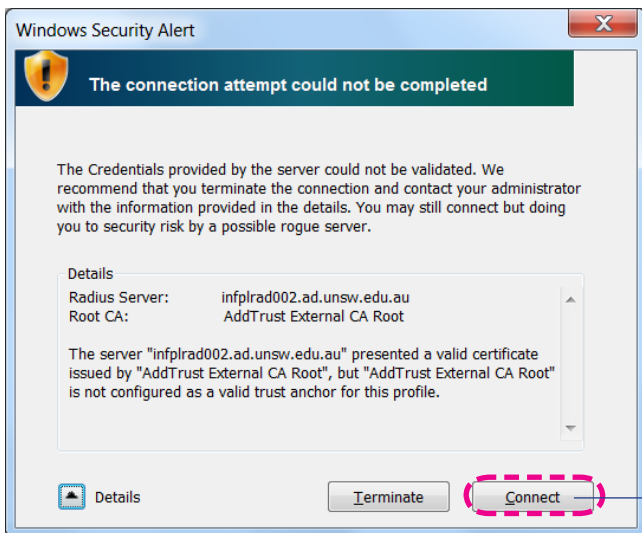
3. Click on **Enter/Select additional log on information**



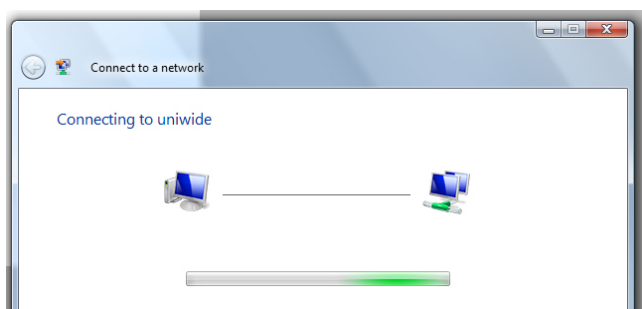
4. Enter your **zNumber number** and your **zPass** in the **Password** field

5. Click **OK**

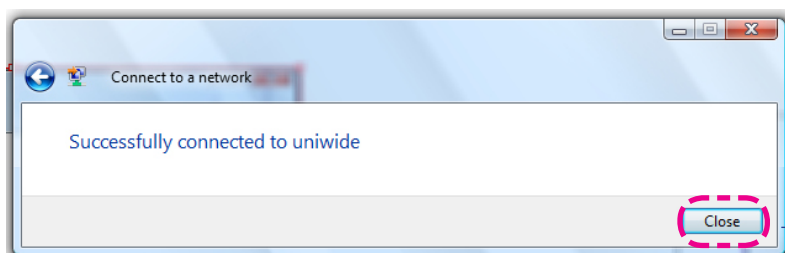
*Continued over...*



6. Click **Connect**



A **Connecting to uniwide** window will appear



A **Successfully connected to UniWide** message will appear

7. Click **Close**

**You should now be connected to the UniWide wireless network**

Once you have completed the above instructions your laptop should automatically connect to UniWide whenever you are on campus AND within range of a UniWide access point.

Refer to the website [www.it.unsw.edu.au/students/uniwide](http://www.it.unsw.edu.au/students/uniwide) for UniWide coverage maps.

Note: ensure your laptop has wireless connectivity turned on before attempting to access UniWide.

**If you change your zPass in the future - you will be prompted to re-enter it the next time you attempt to connect to UniWide**

If you have any issues or questions, please contact the IT Service Centre at [itservicecentre@unsw.edu.au](mailto:itservicecentre@unsw.edu.au)