

Power Supply

Model: ACC39B

USER'S MANUAL



HP-309
October 2005

H **HOFFER FLOW CONTROLS, INC.**
The Turbine Flowmeter Company

107 Kitty Hawk Lane, P.O. Box 2145, Elizabeth City, NC 27906-2145
800-628-4584 252-331-1997 FAX 252-331-2886
www.hofferflow.com E-mail: info@hofferflow.com

This page intentionally left blank.

NOTICE

HOFFER FLOW CONTROLS, INC. makes no warranty of any kind with regard to this material, including, but not limited to, the implied warranties of merchantability and fitness for a particular purpose.

This manual has been provided as an aid in installing, connecting, calibrating, operating, and servicing this unit. Every precaution for accuracy has been taken in the preparation of this manual; however, HOFFER FLOW CONTROLS, INC. neither assumes responsibility for any omissions or errors that may appear nor assumes liability for any damages that may result from the use of the products in accordance with information contained in the manual.

HOFFER FLOW CONTROLS' policy is to provide a user manual for each item supplied. Therefore, all applicable user manuals should be examined before attempting to install or otherwise connect a number of related subsystems.

During installation, care must be taken to select the correct interconnecting wiring drawing. The choice of an incorrect connection drawing may result in damage to the system and/or one of the components.

Please review the complete model number of each item to be connected and locate the appropriate manual(s) and/or drawing(s). Identify all model numbers exactly before making any connections. A number of options and accessories may be added to the main instrument, which are not shown on the basic user wiring. Consult the appropriate option or accessory user manual before connecting it to the system. In many cases, a system wiring drawing is available and may be requested from HOFFER FLOW CONTROLS.

This document contains proprietary information, which is protected by copyright. All rights are reserved. No part of this document may be photocopied, reproduced, or translated to another language without the prior written consent of HOFFER FLOW CONTROLS, INC.

HOFFER FLOW CONTROLS' policy is to make running changes, not model changes, whenever an improvement is possible. This affords our customers the latest in technology and engineering. The information contained in this document is subject to change without notice.

Return Requests / Inquiries

Direct all warranty and repair requests/inquiries to the Hoffer Flow Controls Customer Service Department, telephone number (252) 331-1997 or 1-800-628-4584. **BEFORE RETURNING ANY PRODUCT(S) TO HOFFER FLOW CONTROLS, PURCHASER MUST OBTAIN A RETURNED MATERIAL AUTHORIZATION (RMA) NUMBER FROM HOFFER FLOW CONTROLS' CUSTOMER SERVICE DEPARTMENT (IN ORDER TO AVOID PROCESSING DELAYS).** The assigned RMA number should then be marked on the outside of the return package and on any correspondence.

FOR **WARRANTY** RETURNS, please have the following information available **BEFORE** contacting HOFFER FLOW CONTROLS:

1. P.O. number under which the product was **PURCHASED**,
2. Model and serial number of the product under warranty, and
3. Repair instructions and/or specific problems relative to the product.

FOR **NON-WARRANTY** REPAIRS OR **CALIBRATIONS**, consult HOFFER FLOW CONTROLS for current repair/ calibration charges. Have the following information available **BEFORE** contacting HOFFER FLOW CONTROLS:

1. P.O. number to cover the **COST** of the repair/calibration,
2. Model and serial number of the product and
3. Repair instructions and/or specific problems relative to the product.

LIMITED WARRANTY

HOFFER FLOW CONTROLS, INC. ("HFC") warrants HFC's products ("goods") described in the specifications incorporated in this manual to be free from defects in material and workmanship under normal use and service, but only if such goods have been properly selected for the service intended, properly installed and properly operated and maintained. This warranty shall extend for a period of (1) year from the date of delivery to the original purchaser (or eighteen (18) months if the delivery to the original purchaser occurred outside the continental United States). This warranty is extended only to the original purchaser ("Purchaser"). *Purchaser's sole and exclusive remedy is the repair and/or replacement of nonconforming goods as provided in the following paragraphs.*

In the event Purchaser believes the goods are defective, the goods must be returned to HFC, transportation prepaid by Purchaser, within twelve (12) months after delivery of goods (or eighteen (18) months for goods delivered outside the continental United States) for inspection by HFC. If HFC's inspection determines that the workmanship or materials are defective, the goods will be either repaired or replaced, at HFC's sole determination, free of additional charge, and the goods will be returned, transportation paid by HFC, using the lowest cost transportation available.

Prior to returning the goods to HFC, Purchaser must obtain a Returned Material Authorization (RMA) Number from HFC's Customer Service Department within 30 days after discovery of a purported breach of warranty, but no later than the warranty period; otherwise, such claims shall be deemed waived. See the Return Requests/Inquiries Section of this manual.

If HFC's inspection reveals the goods are free of defects in material and workmanship or such inspection reveals the goods were improperly used, improperly installed, and/or improperly selected for service intended, HFC will notify the purchaser in writing and will deliver the goods back to purchaser upon (i) receipt of Purchaser's written instructions and (ii) the cost of transportation. If Purchaser does not respond within 30 days after notice from HFC, the goods will be disposed of in HFC's discretion.

HFC does not warrant these goods to meet the requirements of any safety code of any state, municipality, or any other jurisdiction, and purchaser assumes all risk and liability whatsoever resulting from the use thereof, whether used singly or in combination with other machines or apparatus.

This warranty shall not apply to any HFC goods or parts thereof, which have been repaired outside HFC's factory or altered in any way, or have been subject to misuse, negligence, or accident, or have not been operated in accordance with HFC's printed instructions or have been operated under conditions more severe than, or otherwise exceeding, those set forth in the specifications for such goods.

THIS WARRANTY IS EXPRESSLY IN LIEU OF ALL OTHER WARRANTIES, EXPRESSED OR IMPLIED, INCLUDING ANY IMPLIED WARRANTY OF MERCHANTABILITY OR FITNESS FOR A PARTICULAR PURPOSE. HFC SHALL NOT BE LIABLE FOR ANY LOSS OR DAMAGE RESULTING, DIRECTLY OR INDIRECTLY, FROM THE USE OF LOSS OF USE OF THE GOODS. WITHOUT LIMITING THE GENERALITY OF THE FOREGOING, THIS EXCLUSION FROM LIABILITY EMBRACES THE PURCHASER'S EXPENSES FOR DOWNTIME, DAMAGES FOR WHICH THE PURCHASER MAY BE LIABLE TO OTHER PERSONS, DAMAGES TO PROPERTY, AND INJURY TO OR DEATH OF ANY PERSON. HFC NEITHER ASSUMES NOR AUTHORIZES ANY PERSON TO ASSUME FOR IT ANY OTHER LIABILITY IN CONNECTION WITH THE SALE OR USE OF HFC'S GOODS, AND THERE ARE NO AGREEMENTS OR WARRANTIES COLLATERAL TO OR AFFECTING THE AGREEMENT. PURCHASER'S SOLE AND EXCLUSIVE REMEDY IS THE REPAIR AND/OR REPLACEMENT OF NONCONFORMING GOODS AS PROVIDED IN THE PRECEDING PARAGRAPHS. HFC SHALL NOT BE LIABLE FOR ANY OTHER DAMAGES WHATSOEVER INCLUDING INDIRECT, INCIDENTAL, OR CONSEQUENTIAL DAMAGES.

Disclaimer:

Specifications are subject to change without notice.
Some pages are left intentionally blank.

CONTENTS

1. Introduction-----1
 Model Number Designation-----2

2. Specifications -----3
 2-1 General Specification -----3

3. Installation -----4

1. INTRODUCTION

The Model ACC39B is a universal input AC power supply with isolated output voltage of 24 Volts. It is designed for use with 2-wire loop transmitters.

The instrument is housed in a general-purpose enclosure and can be mounted directly on a flowmeter, Din Rail or wall mounted using optional mounting brackets or an EX enclosure.

This instrument has been designed to conform to the EMC-Directive of the Council of European Communities 89/336/EEC and the following standards:

Generic Emission Standard EN 50081-1

Residential, Commercial & Light Industry Environment.

Generic Emission Standard EN 50081-2

Industrial Environment.

Generic Immunity Standard EN 50082-1

Residential, Commercial & Light Industry Environment.

Generic Immunity Standard EN 50082-2

Industrial Environment.

As of the date of publication of this document, the instrument is undergoing compliance testing.

Model Number Designation

	MODEL ACC39B-(A)-(B)-(C)
PULSE OUTPUT	
ENCLOSURE STYLE	
SPECIAL FEATURES	

PULSE OUTPUT

MODEL ACC39B-(A)-()-()

OPTION (A)

(24) 24 VDC @ 0.23A.

ENCLOSURE STYLE

MODEL ACC39B-()-(B)-()

OPTION (B)

- (1) GENERAL PURPOSE
- (D) 2" LONG DIN RAIL MOUNT SINGLE UNIT (SEE NOTE).
- (3/O) MEETS CLASS 1, DIV. 1 AND 2, GROUPS C, D
CLASS II, GROUPS E, F, G
CLASS III
NEMA 4X WITH 'O' RING
CERTIFIED CSA, UL
BODY KILARK #GECCT-3, STOCK #200-0945
FLAT COVER, STOCK #200-0533, KILARK #GECBC
- (3B/O) MEETS CLASS I, DIV. 1 AND 2, GROUPS A, B, C, D
CLASS 1, ZONES 1 AND 2, GROUPS IIB + H2, IIA
CLASS II, DIV. 1 AND 2, GROUPS E, F, G
CLASS III
NEMA 3, 4, 7 (B, C, D), 9 (E, F, G)
CERTIFIED CENELEC, CSA, UL, FM
BODY KILARK #HKB, STOCK #200-0406
FLAT COVER, STOCK #200-0773, KILARK #HKB-B
- (3B/O-ATEX) MEETS CLASS I, DIV. 1 AND 2, GROUPS A, B, C, D
CLASS 1, ZONES 1 AND 2, GROUPS IIB + H2, IIA
CLASS II, DIV. 1 AND 2, GROUPS E, F, G
CLASS III
NEMA 3, 4, 7 (B, C, D), 9 (E, F, G)
CERTIFIED ATEX, CENELEC, CSA, UL, FM
BODY/COVER STOCK #200-2006

SPECIAL FEATURES

MODEL ACC39B-()-()-(C)

OPTION (C)

(CE) CE MARK REQUIRED FOR EUROPE.

**NOTE: UP TO 20 HIT-1 UNITS CAN BE MOUNTED ON A SINGLE RAIL
1 METER LONG. ADD 2" PER UNIT.**

2. SPECIFICATIONS

2-1 General Specification

Input Voltage:	85-265 VAC
Input Frequency:	47-440 Hz
Protection:	Reverse polarity protected
Output Voltage:	24 V
Protection:	Short circuit, Over voltage, & Over temperature
Current:	150 mA
Isolation:	3000VAC
Temperature:	Operating: -22 °F (-30°C) to 158 °F (70 °C) 32 °F (0°C) to 140 °F (60°C) with AC power option.
Humidity:	0 – 90% Non-condensing.
Packaging:	General Purpose, Din Rail & Explosion proof

3. INSTALLATION

For installation refer to the drawing ACC39A-702.

DWG NO. ACC39A-702 SH 1 REV A

REVISIONS

ZONE	REV	DESCRIPTION	DATE	APPD
	A	ADDED POWER SUPPLY ASSEMBLY	010829	EJ2

COVER 200-0980

TERMINAL BLOCK 100-1487

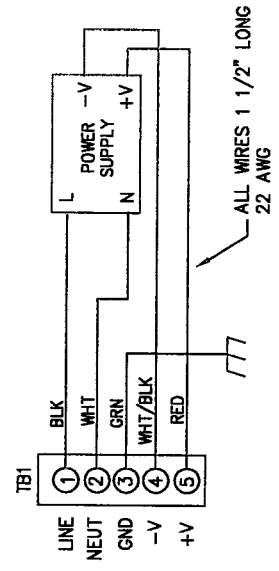
TERMINAL 1

LABEL SIDE

APPLY DOUBLE SIDED TAPE 1/2" WIDE X 1 1/2" LONG


POWER SUPPLY
24VDC OUT - 100-2484
15VDC OUT - 100-2483
12VDC OUT - 100-2482
5VDC OUT - 100-2481

INTERNAL WIRING

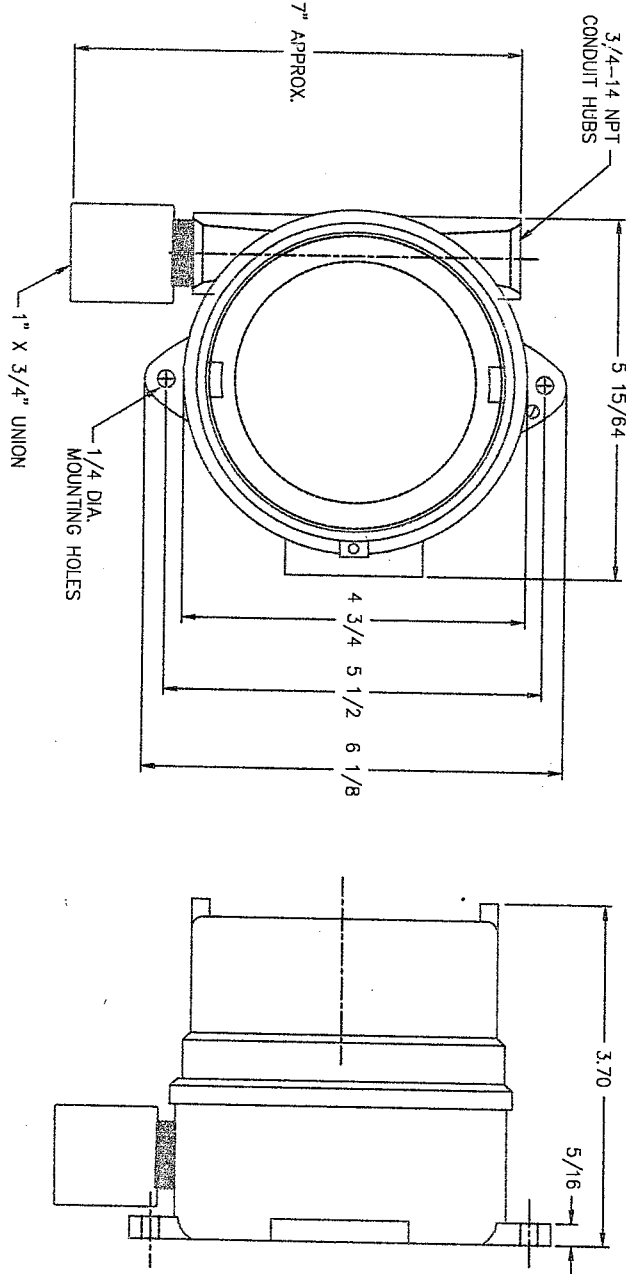
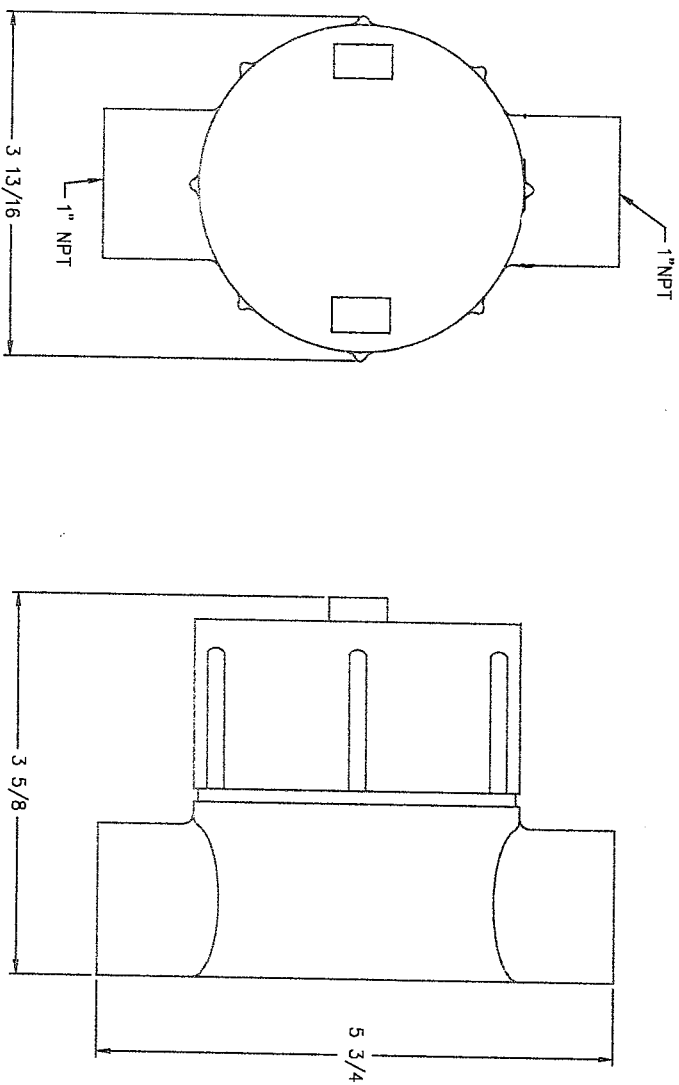
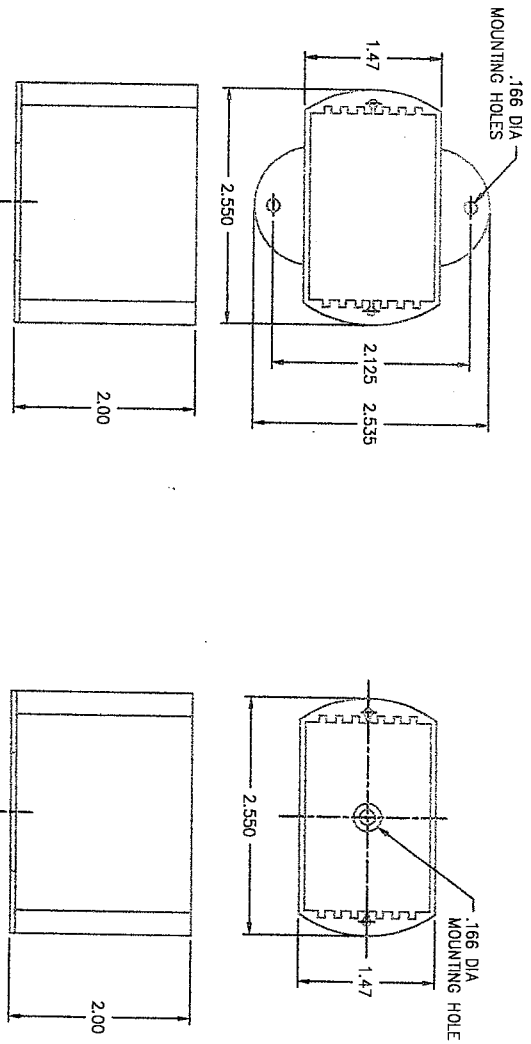


ENCLOSURE 200-2051

MOUNTING PLATE 200-0542

						DRAWN		SHEET		DATE		<div></div> <div>HOFFER FLOW CONTROLS, INC. ELIZABETH CITY, NC 27808</div> <div>TITLE ASSEMBLY DRAWING, POWER SUPPLY-- ACC39A-X-H</div>	
						CHECK		E.SALVO		001024			
						PROJ ENG		E.SALVO		001024			

2		DWG NO.	HIT-902	SH	1	REV.	
REVISIONS							
ZONE	REV	DESCRIPTION				DATE	APPD



3/O EXPLOSION PROOF ENCLOSURE
STOCK NO. 200-0400

3HKB ENCLOSURE
STOCK NO. 200-0406

MATERIAL	FINISH	CONFIDENTIAL PROPERTY OF HOFFER FLOW CONTROLS, INC. (HFC) NOT TO BE DISCLOSED TO ANY OTHER PERSON OR USED FOR ANY OTHER PURPOSE EXCEPT AS AUTHORIZED IN WRITING BY HFC. MUST BE RETURNED ON DEMAND, ON COMPLETION OF ORDER OR OTHER PURPOSE FOR WHICH LENT.
DRAWN	CHECK	DATE
PROJ. ENG.	DATE	DATE
UNLESS OTHERWISE SPECIFIED DIMENSIONS ARE IN INCHES. DIMENSIONS OTHER THAN THE SIZE SHOWN SHALL BE FRACTIONAL.	3 PLACE DECIMALS ± .005	1/16 ± 1/32
SIZE	CAGE CODE	DWG NO.
D	33321	HIT-902
SCALE	N/A	SHEET 1 OF 1

HOFFER FLOW CONTROLS, INC.
ELIZABETH CITY, NC 27909

OUTLINE DRAWING,
HIT-1
ENCLOSURES