



**vanraam**  
Let's all cycle

# Productguide

Tricycles

Tandems

Wheelchair bikes

Double rider bikes

Specials





# Van Raam

Van Raam produces unique special-needs bicycles. The specialties of Van Raam include tricycles, scooter bikes, wheel-chair bikes, wheel-chair transport bikes, tandems, double rider bikes and low step through bikes or comfort bikes. The Van Raam bikes are also available as electric bikes. We use options and customisation, if required, to produce each Van Raam bicycle uniquely in the Netherlands. Van Raam also manufactures bike frames, carrier bike frames and other special bikes.

You can get updated information via [www.vanraam.com](http://www.vanraam.com), videos on YouTube and the latest updates via Facebook and Twitter.



The family company Van Raam has been making Dutch quality bikes for more than 100 years.



# Contents

<b>Tricycles</b>	<b>4</b>
<b>Wheelchair bikes</b>	<b>29</b>
<b>Tandems</b>	<b>35</b>
<b>Others</b>	<b>47</b>
Balance	48
City walking support	50
<b>Options</b>	<b>52</b>
<b>Electric power assist and batteries</b>	<b>56</b>
<b>Productieproces</b>	<b>60</b>
<b>Dealers</b>	<b>63</b>

Note: Images of bicycles shown in the pictures may display options which are not present in the standard design.  
Minor modifications can be made to the bicycle even after the production of this folder. Press-work and printing errors reserved.







# Tricycles

People, who cannot ride on a regular bicycle, look for a proper and safe alternative. The Van Raam tricycle is specially designed for people, who want to have extra support and stability while cycling. Using the numerous options, modifications and customisations, if required, we manufacture every tricycle unique. All the tricycles are also available as electric bikes.

Van Raam has various types of tricycles:

- Traditional tricycle, two-wheels behind and one wheel in front,
- high sitting position.
- Low step through tricycle.
- Comfortable tricycle with seating, low step through and lower sitting position.
- Compact electric scooter bikes that can also be used without pedalling.
- Tricycle with two wheels in front and one wheel behind.

# Tricycles

## Standard specifications of tricycles

The Van Raam tricycles normally have the following specifications:

- plastic chain guard • environment-friendly powder-coating • parking brake
- quick release saddle • steering limiter • five-year guarantee on frame
- lighting\* • lock\* • differential\* and an adjustable stem.

\*exception: Husky has no lighting, lock, and differential. The Husky and Mini have no adjustable stem.

## Features in tricycles

The Van Raam tricycles have the following features:

- smooth-running • stable • maneuverable • modern design • trendy colours
- multiple options.

Various options can be ordered on all the tricycles, including electric power assist, footrests, special cranks, brake and steering.

These have been discussed on the page “options and electric power assist”.



**Parking brake**



**Adjustable stem**



**Differential**

## Traditional tricycle

The traditional tricycle is a cycle with two wheels behind and one wheel in front, where the seat is placed above the bottom bracket. You pedal virtually downwards and sit relatively high on the cycle. As the frame of a tricycle is not inclined at the bend, it takes a little getting used to for some people. With one front wheel this type of cycle can be manoeuvred more easily, this is also because practically all Van Raam cycles are equipped with a differential. Van Raam has different sizes for this type of tricycles.





# Husky

Tricycle





# Husky

## Tricycle

The Husky tricycle is specially designed for young children, who have difficulties with stability. This cheerful, light-running tricycle has a specially designed bottom bracket, making it possible for a child to pedal downwards. The crank normally has integrated crank-shorteners. It is not possible to use an electric engine for power assist on the Husky.

### **Suitable for:**

Children aged 2 years and above

### **Technical specifications**

Inside leg length	35 to 47 cm
Frame height	23 cm
Step through height	12 cm
Cycle weight	+/- 11 kg
Cycle length	98 cm
Cycle width	59 cm



**Push bar, back fixation**



# Mini

Tricycle

The Mini tricycle is a modern tricycle designed for children. It is a smooth-running bike, which can be manufactured in beautiful colours. Obviously the Mini is available with various options, such as a handle bar, back and foot fixation and an electric engine for power assist.

## Suitable for:

Children aged 4 years and above

## Technical specifications

Inside leg length	47 - 59 cm
Frame height	31 cm
Step through height	20 cm
Cycle weight	+/- 21 kg
Cycle length	136 cm
Cycle width	60 cm



Push bar



Back fixation



# Midi

Tricycle



The Midi is a trendy tricycle designed for younger users or shorter people. It is a smooth-running three-wheeler with a solid finish and beautiful design. Obviously the Midi is available with various options, such as a stationary crank, foot fixation and an electric engine for power assist.

## Technical specifications

Inside leg length	66 - 80 cm
Frame height	41 cm
Step through height	28 cm
Cycle weight	+/- 27 kg
Cycle length	168 cm
Cycle width	75 cm

## Suitable for:

The Midi tricycle is suitable for children aged about 8 years and above or for shorter adults



Parking brake



# Maxi

Tricycle





# Maxi

Tricycle

The trendy Maxi is designed for stability and hence creates a feeling of security while cycling. You can easily mount and ride with this smooth-running tricycle. Obviously the Maxi is available with various options, such as a walking stick holder, a shopping basket, foot fixation and an electric engine for power assist.

## Suitable for:

Adults

## Technical specifications:

Inside leg length	80 - 95 cm
Frame height	53 cm
Step through height	28 cm
Cycle weight	+/- 29 kg
Cycle length	180 cm
Cycle width	75 cm



Rear light



## Maxi Comfort

Low step through tricycle

Van Raam has a variant of the traditional tricycle. This has a low spacious step through and easier sitting position. Instead of above the pedals, you sit a little behind them. This gives you a lower sitting position, so you can always mount with both your legs on the ground and have optimum space for knee movement. In this variant you do not need to raise the legs high for mounting and can draw the seat underneath yourself and then sit. With a lower centre of gravity this tricycle feels more comfortable than the conventional ones. The lower sitting position places lesser burden on your back, shoulders, neck and wrists. The Maxi Comfort is available with a smaller, standard and extra high frame. Many people find this cycle easier to ride than a traditional tricycle. There are many options available, such as gear lever, backrest, footrests and an electric engine for power assist.



### **Suitable for:**

The Maxi Comfort is suitable for adults who have balancing problems, difficulty in getting on and off a bike and need to ride in an ergonomic cycling position.

### **Technische specificaties**

Inside leg length	67 - 100 cm
Frame height	42cm, 52cm, 61cm
Step through height	23 cm
Cycle weight	+/- 32 kg
Cycle length	194 cm
Cycle width	75 cm



**Quick release**







## Tricycle with seating

Low step through and lower sitting position

There is a tricycle with a low step through, a seating with back support and a forward pedalling position designed for people, who want to cycle in a comfortable and stable manner. You sit at a lower height, which gives you a lower centre of gravity, thereby boosting confidence and giving a feeling of safety.

Virtually anyone can ride without getting used to it on this cycle. The comfort seat gives your back support and adequate space for sitting. This completely different cycling position lays hardly any burden on the back, neck, shoulders and wrists. As you are practically sitting between the rear wheels, you also have fewer problems anticipating the width. There is an adult and a junior variant of this type of tricycle. There is also a sports model with under-steering.

Recently Van Raam developed the Easy Go, a compact electric scooter bike



# Easy Rider

Comfortable tricycle with seating

The Easy Rider tricycle for adults is clearly different from other tricycles. It has a unique frame with low step through and a stable lower sitting position. The low centre of gravity, seating with a back support and steering in front give the rider a safe and secure feeling. The seat height and seat angle are adjustable. The forward pedalling motion and the frame suspension ensure a perfectly comfortable ride.

The special cycling position lays hardly any burden on the back, neck, shoulders and wrists. Virtually anyone can ride this cycle without getting habituated to it. The Easy Rider is available with various options, such as, a single hand brakes, a walker holder, foot fixation and an electric engine for power assist.



Seat



Suspension



### **Suitable for:**

Adults, who want to ride comfortably and without fear on a beautifully designed tricycle.

### **Technical specifications**

Inside leg length	69 - 95 cm
Step through height	38 cm
Cycle weight	+/- 43 kg
Cycle length	210 cm
Cycle width	75 cm







## Easy Rider Junior

Comfortable tricycle with seating

The Easy Rider Junior is specially designed for children, who have difficulties with stability. This sturdy and smooth tricycle with a low step through has a seating with backrest and therefore, gives more support than a cycle with a regular saddle. The frame has a suspension for optimal comfort. The comfortable forward pedalling position makes the cycle sporty. The Easy Rider Junior is available with various options, such as a direction indicator set, arm rests, foot fixation and an electric engine for power assist.

### Suitable for:

Children aged about 4 years or older  
people with lesser height

### Technical specifications

Inside leg length	47 - 73 cm
Step through height	35 cm
Cycle weight	+/- 34 kg
Cycle length	175 cm
Cycle width	75 cm



Special handels





# Easy Sport

Sporty, comfortable tricycle with seating

The Easy Sport is an ideal tricycle for sports-minded people, who want to ride comfortably. This recumbent trike can be used as well for sports and recreation. The ergonomic seating, with adjustable seat height and the seat angle, ensures optimum support. The frame suspension guarantees extra comfort.

The cycling position with the handlebar below places hardly any burden on the back, neck, shoulders and wrists. With the adjustable length, having various options this recumbent tricycle can be used to suit everyone's needs.

## Technische specificaties

Inside leg length	65 - 105 cm
Seat angle	35 - 45 degrees
Cycle weight	+/- 31 kg
Cycle length	195 - 225 cm
Cycle width	80 cm

## Suitable for:

Adults, who have difficulty with balancing, are sports-minded and want to ride comfortably on a modern cycle.



Suspension



Handlebar below



# Easy Go

## Compact electric scooter bike

The compact electric scooter bike is designed for people with stability problems or variable energy level. There are three options available on this tricycle: you can ride the trike by just pedalling, you can ride it by pedalling with electric pedal support, or you can use 100% electric power assist. When you fold the footrest down, you do not pedal anymore and use the cycle as a scooter. This can have variable speed levels. You can easily decide which type of support you want during the cycle ride.

This cycle is quite compact and maneuverable and hence, also suitable to use for shopping. The adjustable double suspension gives you a stable and comfortable driving experience. There is no driving licence or any other driving ability certificate required to ride the Easy Go. However, there must be an insurance done for it.



**Throttle**



**Footrest**



**Adjustable suspension**



### **Suitable for:**

Adults with a variable energy level, who want to cycle, but would also like to have the possibility of completely switching to electric scooter if they cannot cycle (any more).

### **Technical specifications**

Inside leg length	75 - 90 cm
Step through height	28,5 cm
Cycle weight	+/- 64 kg
Cycle length	166 cm
Cycle width	71,5 cm









# Tricycle

With two wheels in front and one rear wheel

For people, who find it hard to anticipate the width of a tricycle, there is a tricycle with two front-wheels and one rear wheel. This design helps the tricycle rider to always be in a position to correctly judge whether he can pass through or along some place. This type of cycle is also called a T-bike or a trike. The saddle of this type of tricycle is placed above the pedals. You pedal virtually downwards and sit relatively high on the cycle. Two wheels in front are somewhat heavier to control and have a greater turning radius than one wheel in front

# Viki, Vik

Tricycles with two wheels in front for children

Modern design tricycles with two wheels in front and one wheel behind. The Viki and Vik are available with various options, such as foot straps, a backrest, a push bracket and footrests.



## Viki

### **Suitable for:**

Children aged 3 years and above, who have a problem in estimating the tricycle width.

### **Technical specifications**

Inside leg length	42 - 55 cm
Frame height	25 cm
Step through height	12 cm
Cycle weight	15 kg
Cycle length	100 cm
Cycle width	66 cm



## Vik

### **Suitable for:**

Children aged 5 years and above, who have a problem in estimating the tricycle width.

### **Technical specifications**

Inside leg length	55 - 65 cm
Frame height	38 cm
Step through height	13 cm
Cycle weight	20 kg
Cycle length	100 cm
Cycle width	75 cm

# Viktoria, Viktor

Tricycles with two wheels in front

Tricycles with two wheels in front and one wheel at the back and a low and spacious step through. The cycles can be optionally equipped with electric power assist. Besides, there are various options available such as a walking stick holder, backrest, lower leg fixation and footrests.

## Viktoria

### Suitable for:

Young people and short adults, who have balancing problems and have difficulty in anticipating the cycle width.

### Technical specifications

Inside leg length	63 - 73 cm
Frame height	41 cm
Step through height	18 cm
Cycle weight	30 kg
Cycle length	152 cm
Cycle width	78 cm



## Viktor

### Suitable for:

The Viktor tricycle is suitable for adults, who have balancing problems and difficulty in gauging the cycle width.

### Technical specifications

Inside leg length	72 - 85 cm
Frame height	50 cm
Step through height	16 cm
Cycle weight	30 kg
Cycle length	173 cm
Cycle width	86 cm









## Wheelchair bikes

The Van Raam wheel-chair bikes are used to enable a wheelchair dependent person to travel by cycle. Van Raam has two models of wheel-chair bikes: the VeloPlus wheelchair transport bike and the OPair wheel-chair bike.

In the VeloPlus the passenger can keep sitting in his or her own wheelchair. Virtually any hand-driven wheelchair can be driven and fixed easily on the tilted plateau of the wheelchair by one person without transferring the passenger.

In the OPair the passenger sits in the seat on the front side of the cycle. The standard seating can be adjusted in many ways. A separate seat can also be mounted, if required. Optionally, the wheel-chair part can be detached from the cycle and used independently as a wheelchair.

The wheelchair bikes have a number of advantages; they can be taken quite close to the destination, there is social contact between both the persons riding it, one is less dependent on a third person for transportation and they are environment-friendly. The optional power assist makes it possible for virtually anyone and under almost any circumstances to negotiate long distances.



# OPair

## Wheelchair bike

The OPair is a cycle, with which you can transport a wheelchair user. There is a suspension wheelchair mounted on the front side of the bike. The rider has a good view of and can watch over the passenger from behind. The front part can easily be disconnected from the cycle part in the detachable variant so that it can be used as an independent wheelchair anywhere. The universal tub can be adjusted in many ways and optional be adjusted to the requirements for children. The cycle can be completely customised using various options. Even a separate seating can be mounted on the cycle.

The gradually sloping front wheels give the cycle extra comfort and stability while riding. You may even use the optional electric engine for power assistance while cycling. The OPair is mostly used for transporting the same person because the seat has been adjusted for that person.



**Footrest**



**Detachable frame**



**Adjustable back support**



### **Suitable for:**

Cycling with children or adults, who cannot cycle on their own due to disability, and can make an easy transfer.



**Seat adults**

### **Technical specifications**

Inside leg length	82 - 96 cm
Frame height	54 cm
Cycle weight	+/- 53 kg
Cycle length	197 cm
Cycle width	70 cm

Visit [www.vanraam.com](http://www.vanraam.com) for all the options





# VeloPlus

## Wheelchair transport bike

The VeloPlus is designed for transporting people, who can remain seated in their own wheelchair, by cycle. The passenger is not required to be transferred between the wheelchair and the cycle. The co-rider can be wheeled on to the plateau of the cycle easily without having to be lifted.

The tilted ramp makes it easy to roll the wheelchair on to the wheel-chair bike and fasten it properly with the wheelchair lock. The low positioning of the chair on the cycle makes the ride easier and gives a lower centre of gravity.

The widely placed and extra steered front-wheels ensure a reduced turning radius and hence, stability. The electric engine may be optionally used for power assist during cycling. The VeloPlus is mostly used in institutions or homes for transporting various persons.



**Hydraulic disk  
brakes**



**Wheelchair lock**



**Steered front wheels**





### **Suitable for:**

The VeloPlus wheelchair bike is suitable for any wheelchair up to 74 cm in width. The wheelchair can be placed quickly and easily by one person on to the cycle and is therefore, suitable for homes or institutions.

### **Standard extras**

- 8 gears
- Lap belt
- Hydraulic brakt in front
- Wheelchair lock
- Extra steered front wheels

### **Technical specifications**

Inside leg length	82 - 96 cm
Frame height	53 cm
Cycle weight	+/- 62 kg
Cycle length	240 cm
Cycle width	109 cm



**Tilted ramp**





# Tandems

The Van Raam tandems are used to enjoy cycling together. Van Raam has various types of tandems: the tandem, in which two adults sit one behind the other: the Twinny; a tandem, in which a child and an accompanying adult, sit one behind the other: the Kivo

The Twinny and the Kivo are also available as a tricycle variant with two rear wheels.

Besides, there is a Fun2Go double rider cycle, in which two adults or an adult and a child can sit next to each other. There is also a trailer available for the Fun2Go, the Funtrain, with which four people can cycle together.

With the low step through or no step through and the various options available, the tandems are widely used by people, who can no longer cycle by themselves anymore. The smooth-running tandems can be adjusted using the (optional) freewheel switch in such a way that you can pedal at speeds independent of each other, with equal speed, or the passenger does not pedal at all. The Twinny tandem is also available as detachable, which facilitates transporting it behind the car using a bike carrier.

## Various options

The Van Raam tandems are also available in electric versions with electric power assistance. There are various options possible to make the tandem suitable for any type of use. We produce every tandem uniquely. Thus, for example, we can personalise the tandems with front or rear control, as required.



# Twinny

## Tandem

It is easy to get on and off the Twinny. This is owed to the spacious low step through. It is designed with more space between the saddle of the front rider and the handle of the co-rider, thus avoiding the two riders sitting too close to each other. You can decide on your own how to cycle together, so you may pedal independently of each other using the double freewheel. The optional freewheel switch is used to decide, whether both the riders pedal at independent speeds, with the same speed or the passenger does not have to pedal at all.

Many options are available for this cycle, including a detachable variant. You may even opt for a steering handle to be assembled at the rear. As every bike is produced uniquely, you can get the frame height adjusted in front and at the back as per your requirement. An electric engine can be used for a comfortable power assist to make cycling on this tandem much easier.



**Switchable freewheel**



**Detachable frame**





### **Suitable for:**

Two adults with no balancing problems and who consider movement and social contact important.

### **Technical specifications**

Inside leg length	77 - 89 cm
Standard frame height	53 cm
Step through height	R 44 cm, F 37 cm
Cycle weight	+/- 35 kg
Cycle length	259 cm
Cycle width	66 cm





# Twinny Plus

Three-wheel tandem



# Twinny Plus

Three-wheel tandem

The Twinny-Plus is a three-wheel version of the Twinny. It has two rear wheels, these two wheels make it even easier to get on and off the bike, when it is stationary. The Twinny Plus has the same features and options as the Twinny.

## Technical specifications

Inside leg length	77 - 89 cm
Frame height	53cm (adjustable)
Step through height	R 45 cm, F 35 cm
Cycle weight	+/- 38 kg
Cycle length	261 cm
Cycle width	75 cm





# Kivo

Child-parent tandem



Switchable freewheel



Kivo Plus





# Kivo

## Child-parent tandem

The Kivo is a child-parent tandem with a grown-up sitting behind and a child sitting in front. The child can get a good view of the environment. The rider sitting behind can always keep a good watch on the child. The Kivo has a low step through and therefore, is easier to use. Normally the Kivo has 8 gears and a freewheel switch. The Kivo also has a variant with two wheels behind.

An optional electric engine is possible to install on all the variants, which gives a comfortable pedal support, this makes cycling on this tandem even easier.

### **Suitable for:**

Children, who cannot cycle independently and want to participate in a journey with an attendant.

### **Technische specificaties**

Inside leg length	R 77-89 cm, F 50-62 cm (adjustable)
Frame height	R 53 cm, F 30 cm (adjustable)
Step through height	R 43 cm, F 36 cm
Cycle weight	+/- 39 kg
Cycle length	244 cm
Cycle width	66 cm



## Fun2Go

### Double rider cycle

The Fun2Go is a double rider cycle, a three-wheel tandem, in which the users sit beside each other. One person steers, both can pedal. The two persons have a good view and can communicate well with each other due to the seats being next to each other. The riders can get on without having to step through and the seats can be easily adjusted to the required distance with a lever.

The Fun2Go is enormous manoeuvrable, with two wheels completely in the rear and one fore-wheel it can be rotated round its own axis. The optional freewheel switch can be turned on or off to determine whether the rider (if mandatory) would pedal along. There is an optional electric engine to give power assist to help you cycle under any circumstances easily.

Furthermore, many other options can be used to make the Fun2Go complete. There is also a double rider trailer, the Funtrain, on which a total of three passengers and an attendant can safely ride.



### Suitable for:

The Fun2Go is widely used by institutions, homes, and private individuals for people who can no more participate in the traffic independently.

### Technical specifications

Inside leg length	75 - 90 cm
Seat height	61 cm
Step through height	None
Cycle weight	+/- 69 kg
Cycle length	200 cm
Cycle width	113 cm



Adjustable seat



Switchable freewheel



Rotatable seat



# Funtrain

Double rider trailer

The Funtrain is an automatic, hydraulic braked double rider cycle trailer, which can be attached behind an existing or new Fun2Go side by side bike. In this manner an attendant can safely ride with three co-riders or usually with one co-rider on the Fun2Go itself.

A tow bar is simply fitted on the existing Fun2Go. The Funtrain has a safety lock which cannot come off on its own and an automatic, hydraulic, overrun brake. The driver of the front double rider bike thus has 100% control over the Funtrain and Fun2Go.

The driver is the only one who steers and brakes, all the four riders can pedal along. Optionally, it can also be determined for the co-riders individually whether they must pedal, with the same speed or different speed or need not pedal at all. The Funtrain itself has a foldable support wheel to move the detachable double rider bike trailer easily.

You can even attach two Funtrains behind a Fun2Go so that six people can cycle together.





### Suitable for:

Institutions, homes, and communities where one attendant wants to cycle with many individuals.

### Technical specifications

Inside leg length	75 - 90 cm
Seat height	61 cm
Step through height	None
Cycle weight	+/- 67 kg
Cycle length	197 cm
Cycle width	113 cm



Hydraulic overrun brake



Comfort seat





## Other

### Van Raam cycles

Van Raam also produces a comfortable low step through bike and a balance bike.

Apart from this Van Raam also makes frames for others and special bikes totally custom-made for people with a disability. Thus, we make unique bikes, for example, for people of short stature (dwarfs). Another example is a bike for someone with no arms, the person steers with the back and changes gears with the feet.



# Balance

Comfortable low step through bike

The Balance low step through bike by Van Raam is a comfort bike with a low step through and a uniquely designed frame. With the Balance bike you can always place both your feet on the ground without getting off the saddle and cycle with a comfortable movement of your legs. The great advantage of the Balance is the unique ergonomically designed seat. Wrists, shoulders and neck are hardly burdened while cycling.

The more forward pedalling motion ensures that you use the power of your legs better than in case of conventional bikes. The lower centre of gravity makes the cycling easier and more comfortable. This bike is, thus, much more than a low step through bike, it is much safer because you do not have to get on and off the saddle at a stop. The Balance is also available with an electric engine for power assist and many other options.

## **Suitable for:**

Senior citizens, people having difficulty getting on and off a bike, people with neck, shoulder and wrist pains and people with slight balancing problems.





### Technical specifications

Inside leg length	67 - 82 cm, 76 - 91 cm, 85 - 100 cm
Frame height	42 cm, 52 cm, 61 cm
Step through height	23 cm
Cycle weight	+/- 22 kg
Cycle length	182 cm
Cycle width	66 cm





**City**

Walking support

**Foldable**



## City

### Walking support

The City walking support is suitable for people who have difficulty in walking or prolonged standing. A wheelchair is not yet required and you do not prefer a walker.

Your body weight is borne by the seat of the walking support, thus relieving your leg joints. Walking takes less effort, hence you can travel over longer distances. Besides, the walking support is foldable and light-weight, so you can easily carry it along in a car, bus, train or plane.

#### **Suitable for:**

People having difficulty in walking or prolonged standing

#### **Technical specifications**

Inside leg length	70 - 95 cm
Frame height	70 - 95 cm
Step through height	22 cm
Cycle weight	+/- 9 kg
Cycle length	113 cm
Cycle width	55 cm



# Options

of Van Raam cycles

Every Van Raam cycle is available with many options, such as: baskets, mirrors, walker and walking stick holders, lower leg and foot fixation, foot straps, belts, arm and back support, direction indicators, special handles, foot plates, hydraulic brakes, one-hand operation, a gear lever to easily control the speed, different gear systems, kilometre counter and special crank or frame adjustments. There are unique options for every type of bike. You can view these on the website by the specific Van Raam bike.

Using an eccentric crank the two legs can make different rotations so that you can easily cycle, even with a knee with a bending limitation. A crank shortener can help in compensating the difference in the lengths of the legs and other limitations in the legs. One can even cycle with one leg using a stationary crank.

As Van Raam produces every cycle uniquely, making special frame adjustments is no problem. We make the cycles completely uniquely as per your requirements. Therefore, we make frames for exceptional lengths, weight or other bodily limitations.





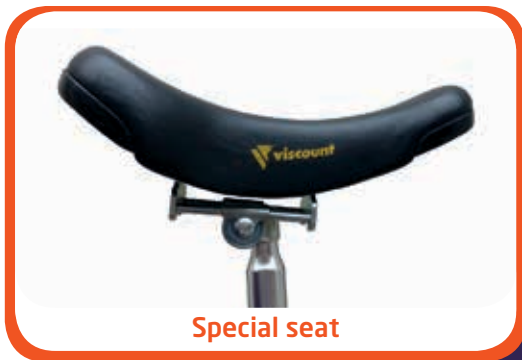
**Footplate**



**Stick holders**



**Walker holder**



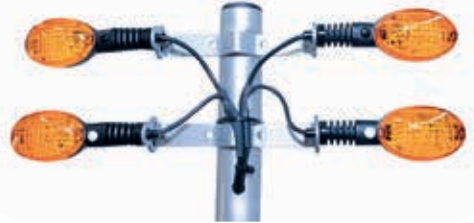
**Special seat**



**Pedal extensions**



**Gear lever**



**Direction indicators**



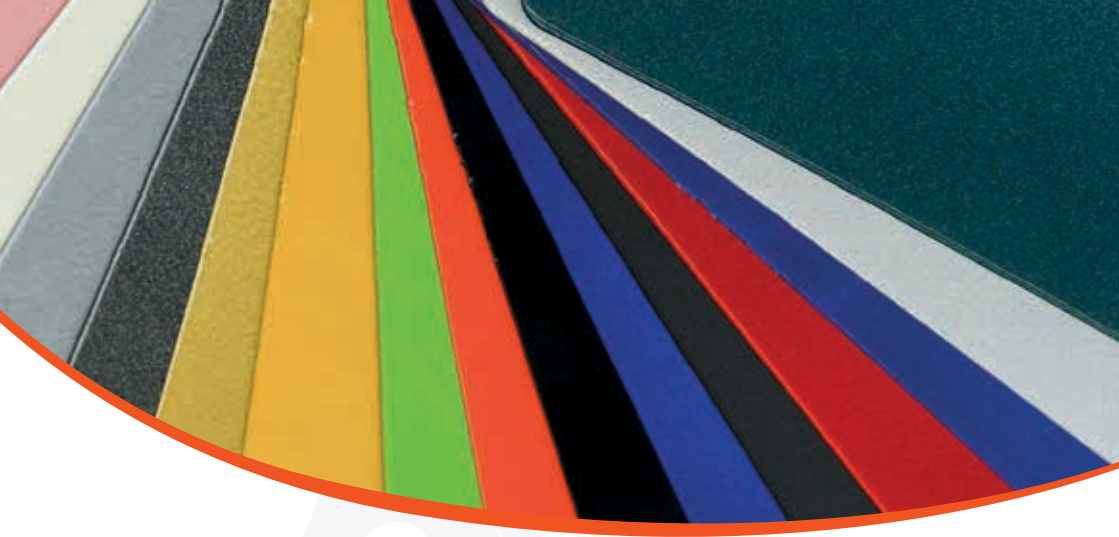
**Eccentric crank**



**Crank shortener**



**Special handels**



# Colours

of Van Raam cycles

The cycles have a standard colour per model and a few other (fixed) optional colours, besides these, the cycle can be painted in any desired RAL colour.



**Standard Van Raam colours**



## Electric power assist

Van Raam has a uniquely designed electric power assist system, the Silent system. Motor housing, batteries, controller, software and display are specially designed and developed for and by Van Raam. You have to always pedal alongside this type of system. On the Easy Go scooter bikes, you can also ride with 100% electric assist.

The noise-free Silent system is normally equipped with a starting aid: if required, you can ride at a speed of up to about 5 km/per hour without having to pedal for a distance of about 10 m using an extra pushbutton on the display. Thereafter, you have to pedal yourself. In case of tricycles you can even cycle in reverse with the electric assist switched on. The Silent motors of Van Raam are equipped with traction control. This means that the motor does not slip on a slippery surface.

There is a standard Silent motor and a Silent HT. The Silent HT gives about one-and-a-half times the output of the standard Silent motor. This HT motor is particularly intended for the heavier bikes, for use in hilly areas or in the case of low pedalling capacity of (both) the cyclists.

The motion sensor, the force sensor in the pedals and the unique software system ensure an optimum support and efficient energy consumption. Thus the power assist will be gradually built up and broken down. This prevents sudden actions of the engine.



## Silent System

The Silent system of Van Raam has already been crowned with international prizes. This is owing to the fact that Van Raam has already attained many years of experience with the designing of electric bikes, which can take on really heavy loads.



**Silent**



**Silent HT**



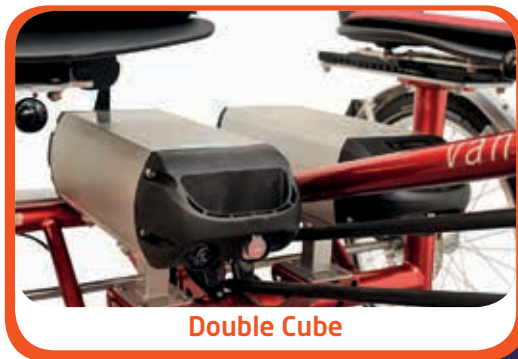
## Batteries

Van Raam uses Lithium ion batteries with 11.2, 12.4 or 24.8 amp per hour and 36 volt. Thus a capacity of 1.785 Watt hour (WH) can be reached.

The batteries and the special software are manufactured in Germany. In practically all cycles, two battery packs can be optionally installed. The batteries are easy to remove from the bike and can be charged on the bike or at home.



**Slim**



**Double Cube**



**Battery charger**



# Production process

of the Van Raam cycles

Van Raam is a family business with a history of more than 100 years. More than 80 people work on the production of the cycles on an expanse of about 6800 sq. m. In Van Raam every cycle is made from a straight tube to a complete end product in the factory at Varsseveld. Through well-trained personnel, continuous innovations, a modern production line and thorough market research, we make cycles that relate to the requirements of the end user.

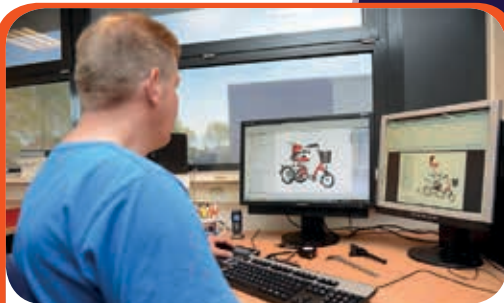
As a well-deserved recognition, Van Raam has been proclaimed by the Ministry of Economic Affairs, Agriculture and Innovation as the 14th most innovative company of the Netherlands. Besides, Van Raam has won various prizes for leading design, technology and cycle innovation in the recent years. The Van Raam cycles are delivered with a CE certificate and Van Raam works in compliance with the ISO 9001 system and the certification of TUV Rheinland.

The family business is characterised by the combination of state-of-the-art knowledge, solid craftsmanship and accurate use of contemporary developments. Van Raam uses modern equipments but does not do away with the 'oldest' handiwork.

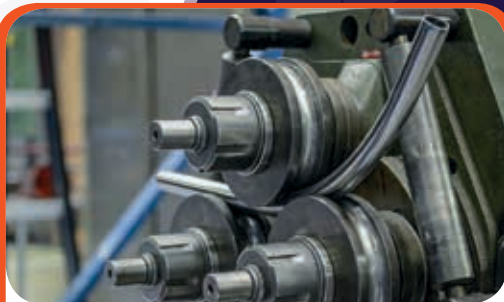




**Stalen buizen**



**Design**



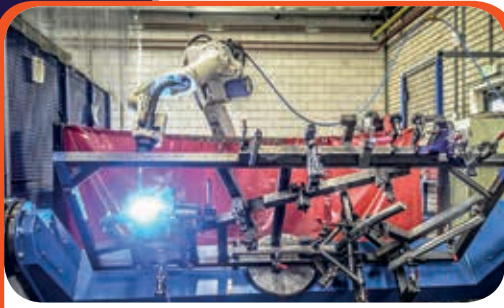
**Bending**



**Milling**



**Solder**



**Welding**



**Blasting**



**Powdercoating**



**Collecting parts**



**Mounting**



# Dealers

Van Raam bicycles

The Van Raam cycles are internationally available with the dealers, whose details are available on the website. There are various types of dealers: dealers who provide service to Van Raam cycles, dealers who keep a few model cycles for test ride and dealers who keep (virtually) all the models. These dealers deliver the cycle to you, make adjustments on them and provide you the after-sales service.

The cycles can also be ordered via any cycle dealer, they can also provide the regular service. We have a showroom with all the models at our factory at Varsseveld. Here, you can have arrangements to test ride the cycles. However, you cannot purchase any cycles here. That can be done later via a dealer or cycle dealer.

The images of cycles shown may contain options or accessories not available with the standard model. Minor modifications may also be brought about on the cycle. Press-work and printing errors reserved. Always read the user's manual thoroughly before using our cycles.

# Would you like more information?

We produce each bike unique, all our bikes are also available as electric bikes. We use options and customisation to suit the bike to your personal requirements.

You can get updated information as prices, dealers and news via [www.vanraam.com](http://www.vanraam.com), videos on YouTube and the latest updates on Facebook, Twitter, Google+ and SlideShare.



**YOUR DEALER:**

## **Special needs bikes**

Aaltenseweg 56

7051 CM Varsseveld, NL

**(T)** +31 (0)315 25 73 70

**(E)** [info@vanraam.nl](mailto:info@vanraam.nl)

**(W)** [www.vanraam.nl](http://www.vanraam.nl)

