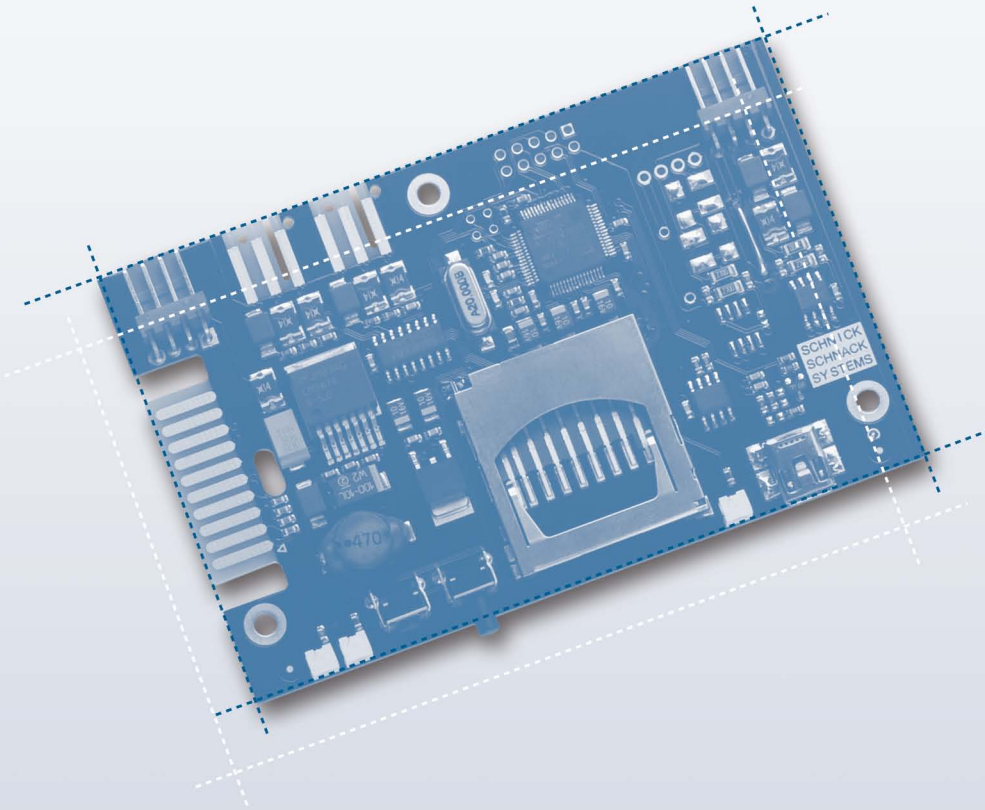


# ***DMX PLAYER USER MANUAL***





# *Content*

<b>1.0</b>	Description
<b>2.0</b>	Basic Functions
<b>3.0</b>	Specifications
<b>4.0</b>	Status Indicators
<b>5.0</b>	Connectivity
<b>6.0</b>	Cabling Examples
<b>7.0</b>	EU Declaration of Conformity

## 1.0 Description

The **player** is against it the inexpensive solution for small systems to the rendition of our streamfiles (\*.s3s). The files are stored on SD map and inserted into the equipment. Applications are e.g. with displays in chains of stores again. With the **player** became from cost reasons consciously on expensive elements such as displays and DMX entrance does without.

Only a tracer to the call of the next file is present. For the same purpose also an external tracer can be attached.

The connection of the LED effected directly with the red system plugs makes the wiring **simple** and **very economical**.

## 2.0 Basic Functions

An SD card, carrying pre-programmed sequences, is inserted into the appropriate slot on the DMX Player. A single button (marked "**Next**") is pressed to switch between the programmed sequences.

## 3.0 Specifications

Dimensions:	151x69x45 mm
Input Voltage:	24 V DC
Output current:	max. 3 A

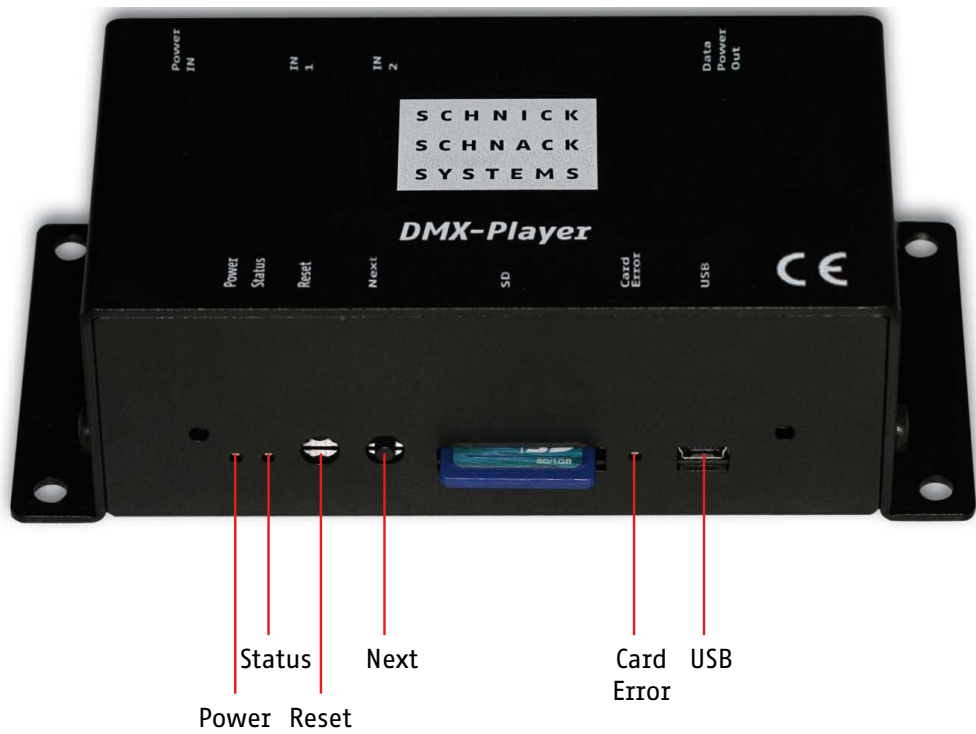
## 4.0 Status indication

Power LED	Status	Card Error	Message
<b><i>In normal service</i></b>			
flashes at 0,5 Hz	off	off	No SD Card found on power up
flashes at 2,5 Hz	off	off	SD Card found
flashes at 5 Hz	off	off	Loading configuration file from SD Card
on	off	On: 0.1 sec./Off: 1.9 sec.	Initialising SD Card
on	off	On: 1.8 sec./Off: 0.2 sec.	SD Card removed – player still running
on	off	flashes at 1,7 Hz	SD Card not available

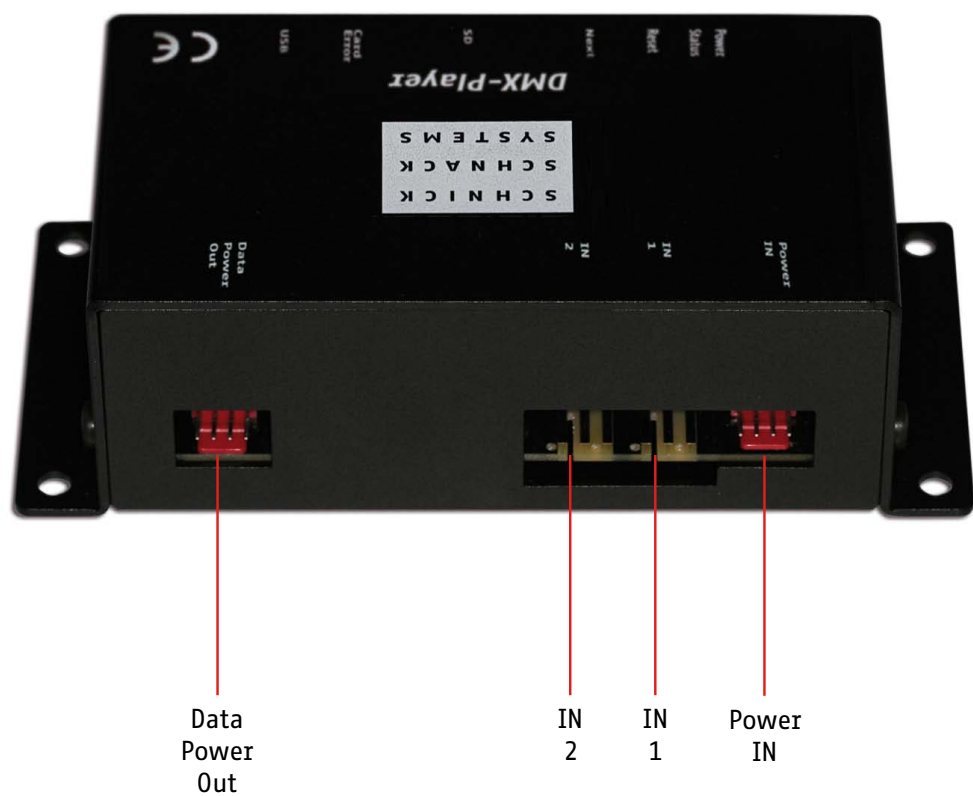
Power LED	Status	Card Error	Message
<b><i>During software update</i></b>			
on	off	off	Update in progress
on	on	off	Error during initialisation or update
on	flashes at 2,5 Hz	off	No firmware found – new update required

# 4.0 Connectivity

The following features are located on the front of the DMX Player:

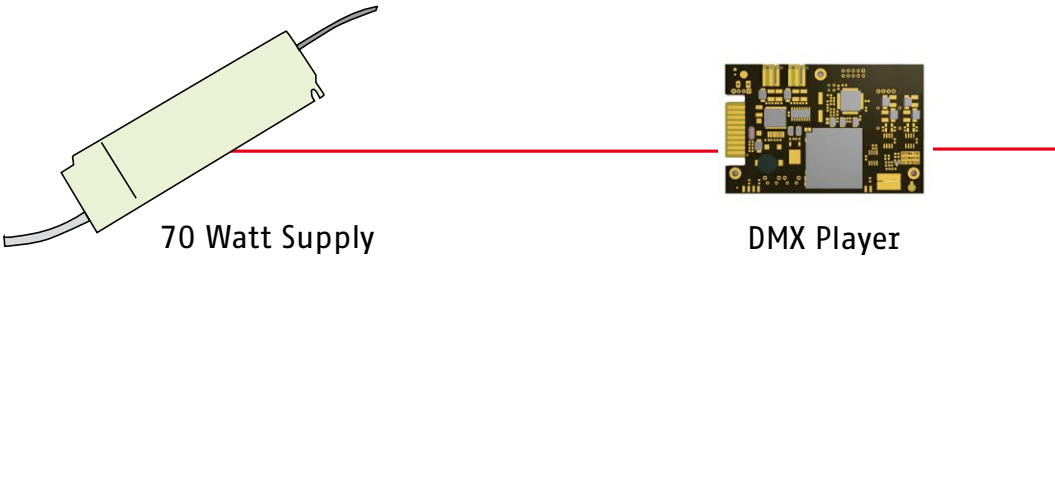
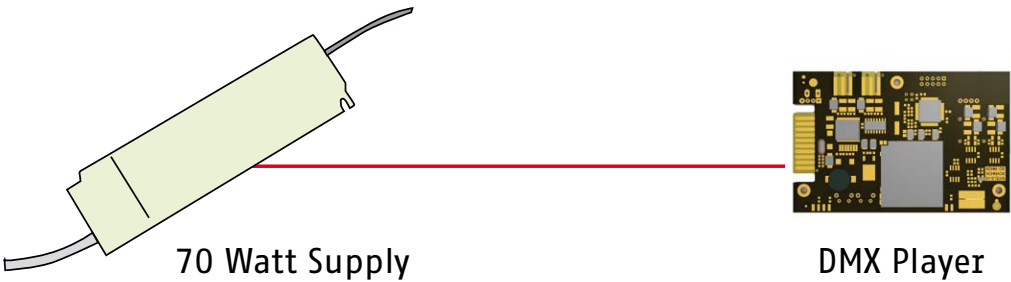


The following connections are located on the rear of the DMX Player:

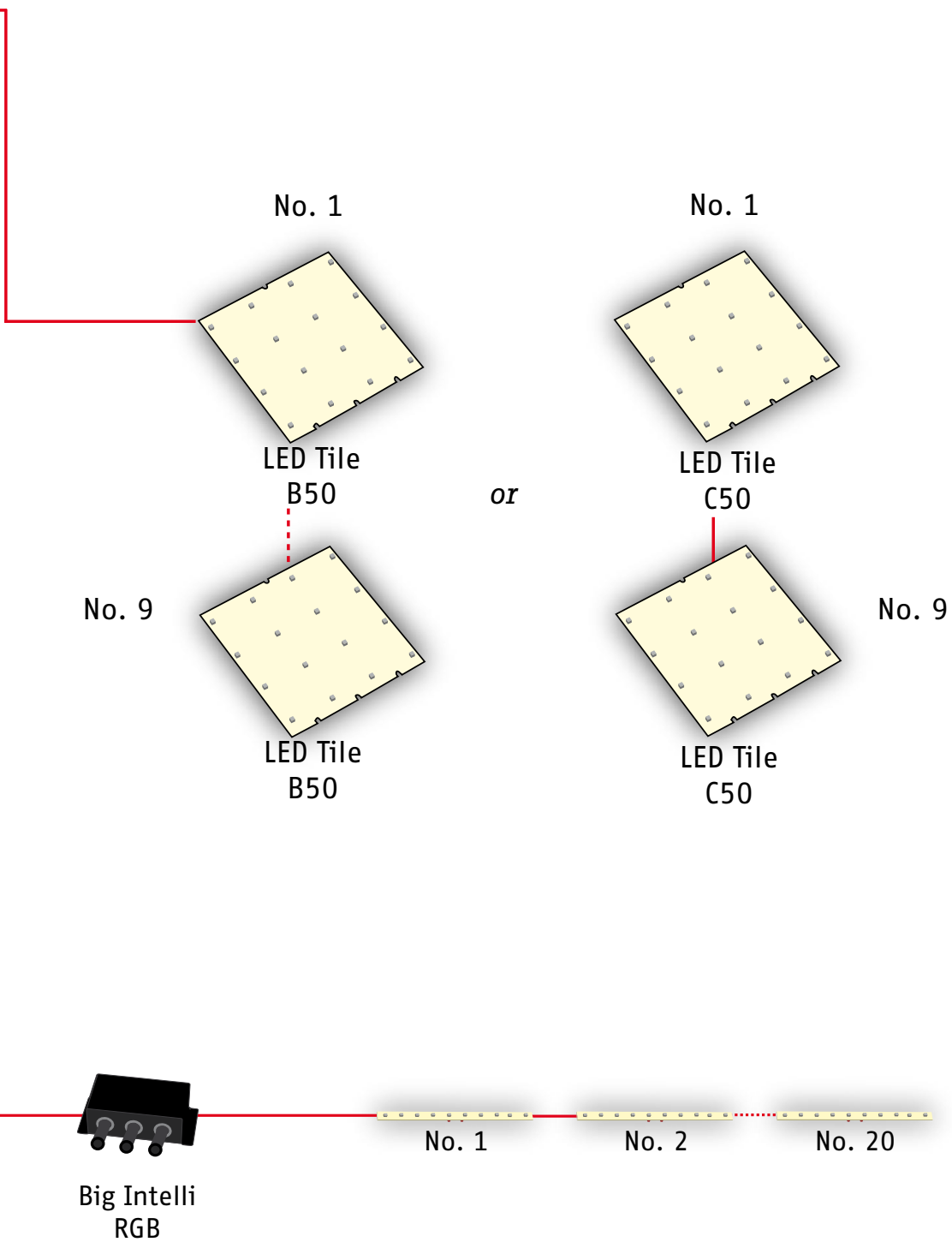


<b>Power:</b>	Illuminated green when power is connected
<b>Status:</b>	See tables
<b>Reset:</b>	Press to reset the DMX Player
<b>Next:</b>	Press to start next sequence
<b>SD:</b>	SD Card slot
<b>Card Error:</b>	See tables (Status indication)
<b>USB:</b>	For future use
<b>Power IN:</b>	Power input connector
<b>IN 1:</b>	Connection point for external Next button
<b>IN 2:</b>	direct connection point for external Reset button
<b>Data Power Out:</b>	direct connection for LED components or DMX OUT with adaptor cable on DMX 5 pin as player

5.0 Cabling examples







## ***6.0 EU Declaration of Conformity***