

## Content of the box:

1x Vaponic (image 01) consisting of:

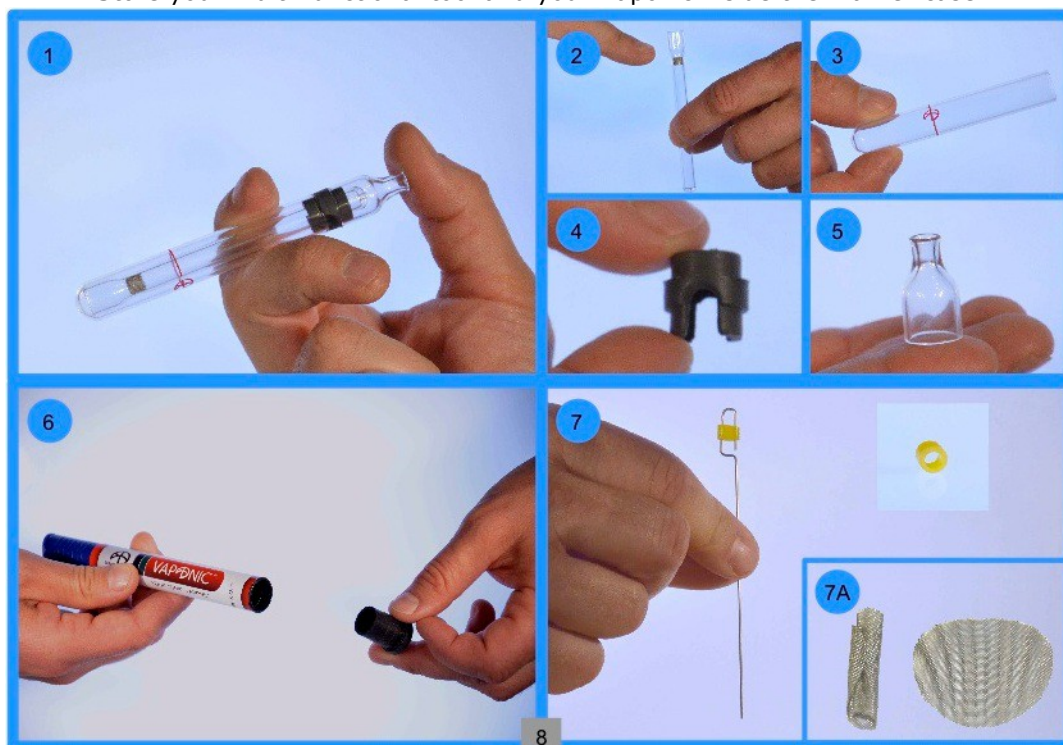
- 1x Inner Tube with 1 Inner filter (image 02)
- 1x Outer Tube (image 03)
- 1x Silicone Connecting Piece (image 04)
- 1x Mouthpiece (image 05)

1x Marker Shaped Case (image 06) consisting of:

- 1x Hollow Marker
- 1x Black Silicone Lid

1x Multi-functional tool + 1x Yellow Silicone Ring (image 07)

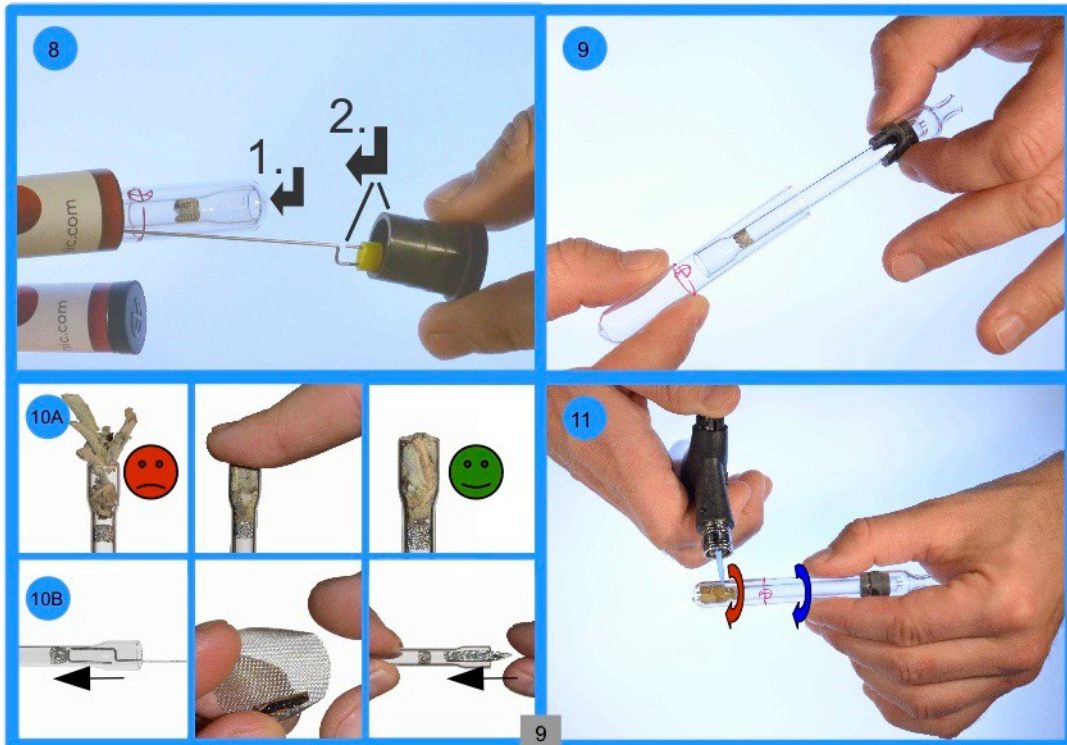
Store your multi-functional tool and your Vaponic inside the marker case.



It will be protected against unwanted damage. Put the yellow rubber ring on the tool to make it easier to find it when dropped on the floor e.g. Put your Vaponic into the marker shaped case first with the mouthpiece looking forward and afterwards the tool together with the lid to close it. Like that the tool and the vaporizer can't get stuck inside and the black silicone lid will fit perfectly in the case (image 08).

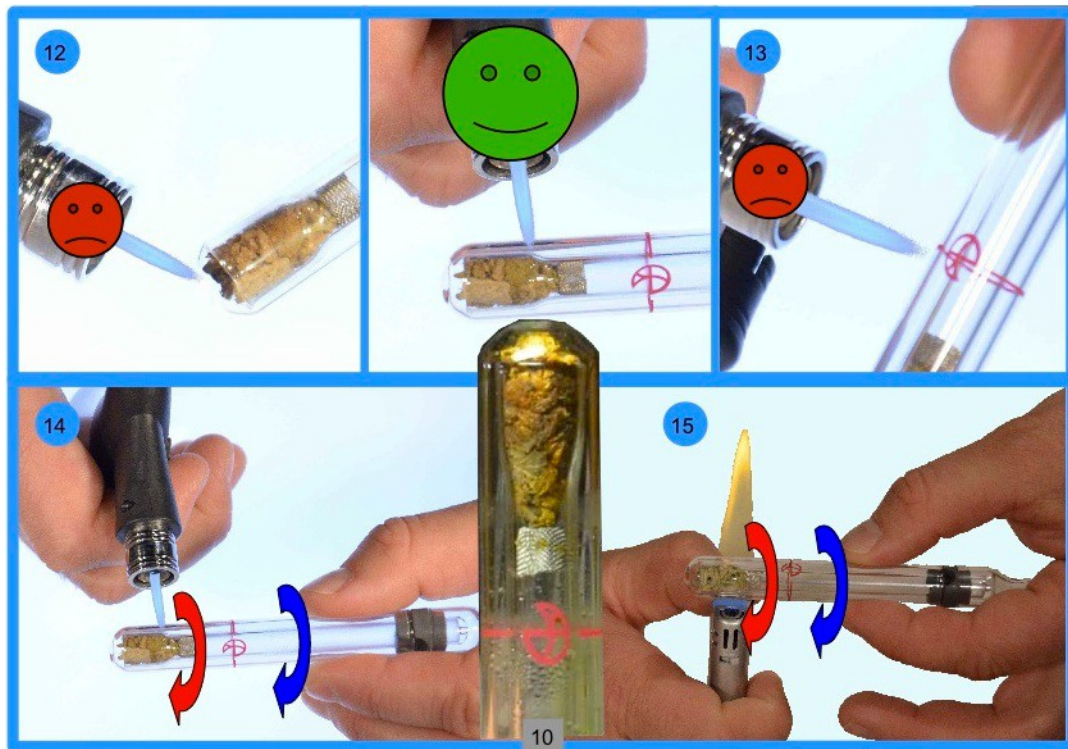
## Using your Vaponic

Open the Vaponic (image 09) and stuff your herbal blend or tobacco into the filling chamber. You can grind the herbs but there's no need to do so. Just roll and squeeze them between your fingers for a second and push them inside (image 10).



Heat up the outer tube of your Vaponic with a (jet-)lighter. **Important:** As indicated on the picture (image 11), only heat it up between the red line with the logo and the closed end of the outer tube, not at the end (because you might burn the plant, image 12) or closer to the red line (because the vaporizer won't work and you might burn your fingers as well, image 13). Turn the pipe while heating in order to spread the heat over the tube equally from all sides.

You can use any flame or lighter, but **Jet-flame or turbo lighters are highly recommended**, specially when used outdoors (image 14). If you use a normal lighter, then heat the tube up with the blue part of the flame and not with or above the yellow part of the flame. This will help to avoid getting soot on the glass (image 15).



Inhale deeply through the mouthpiece. Make sure not to cover the two holes between the outer tube and the mouthpiece with your fingers.

Can you see vapor when you exhale? Then the Vaponic has the right temperature for vaporizing. Stop heating and continue using the heat stored in the device to go for some more puffs (image 16).

Do you not see vapor (any longer) when you exhale? Then the Vaponic is still too cold for vaporizing (or has lost its heat). Heat it up a bit more and try again.

Can you see very thick vapor when you exhale? Then you've brought your Vaponic close to the burning point. Do not heat it up any more – unless you like extremely thick vapor.

Summing it up: You are the thermometer yourself, you will know the right temperature by judging the thickness and also the taste of the vapor. You can also control the temperature visually by observing the herbs inside the filling chamber. When they start to turn slightly brownish because of the heat, then you know it's the right time to vaporize.

### **The Vaponic offers a great advantage:**

As long as you only heat between the red line and the end of the tube as indicated, it's virtually impossible to burn your tobacco without wanting to. When you overheat the device, the plant will seem black and carbonized (image 17) – but not ashes – and the taste of the vapor will be harsh, bitter and unsavory. When you heat it up only a little bit, the plant simply won't change its color but you can savor the delicious taste of its essential oils. It's worth a try.





With correct usage, when the herbs are fully consumed, the vapor gets a slightly bitter taste. When you take them out of the filling chamber, they will seem toasted, dehydrated and have a brown / dark brown color (image 18).

During usage you should make sure not to burn yourself with the hot end. It will always be safe to touch the pipe between the red line on the outer tube and the mouthpiece (image 19). Don't touch the pipe at the hot end. If you're worried about accidentally burning yourself or somebody else with the hot end, then you can simply protect it with the black lid of the marker pen. It's made out of heat resistant silicone and specially designed for that purpose (image 20). You can also use the lid when you want to put your Vaponic somewhere for a second. It will protect the surface (of the table e.g.) from the heat and make sure the Vaponic won't roll and drop down on the floor (image 21).

Your Vaponic is made out of heat resistant Borosilicate 3.3 glass and does not get damaged by exposure to direct flame. Still you must **let it cool down on its own** and **not use cold water or anything similar** to speed up the cooling process. Doing so will damage the glass. After usage we recommend to take the tobacco out of the filling chamber and put the Vaponic back into its case. There it can cool down safely and be well protected (image 08).

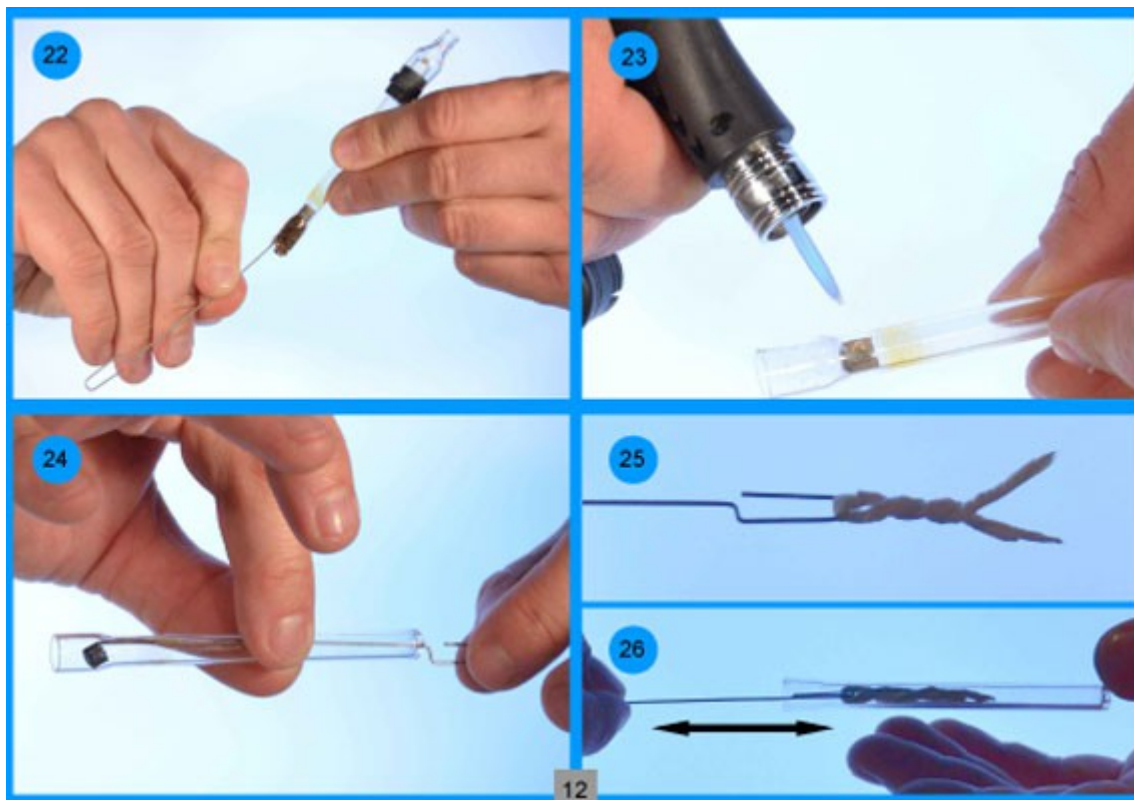
### The multi-functional tool

The multi-functional tool (image 07) included in the kit makes the usage and maintenance of the Vaponic even easier. You can always carry it around as it fits inside the marker shaped case. The tool can be used for:

Taking the vaporized herbs out of the filling chamber (image 22)

Pushing the steel filter out of the inner glass tube. Warm up the inner tube around the filter shortly before doing so in order to liquify the resin accumulated around the filter. (image 23 + 24)

Cleaning the inner tube by pushing a piece of a tissue soaked in ethyl alcohol up and down the inner tube with the shaped end of the tool (image 25 + 26)



Placing the steel filter inside the inner glass tube and measuring the furthest you should push the steel filter inside (image 27)

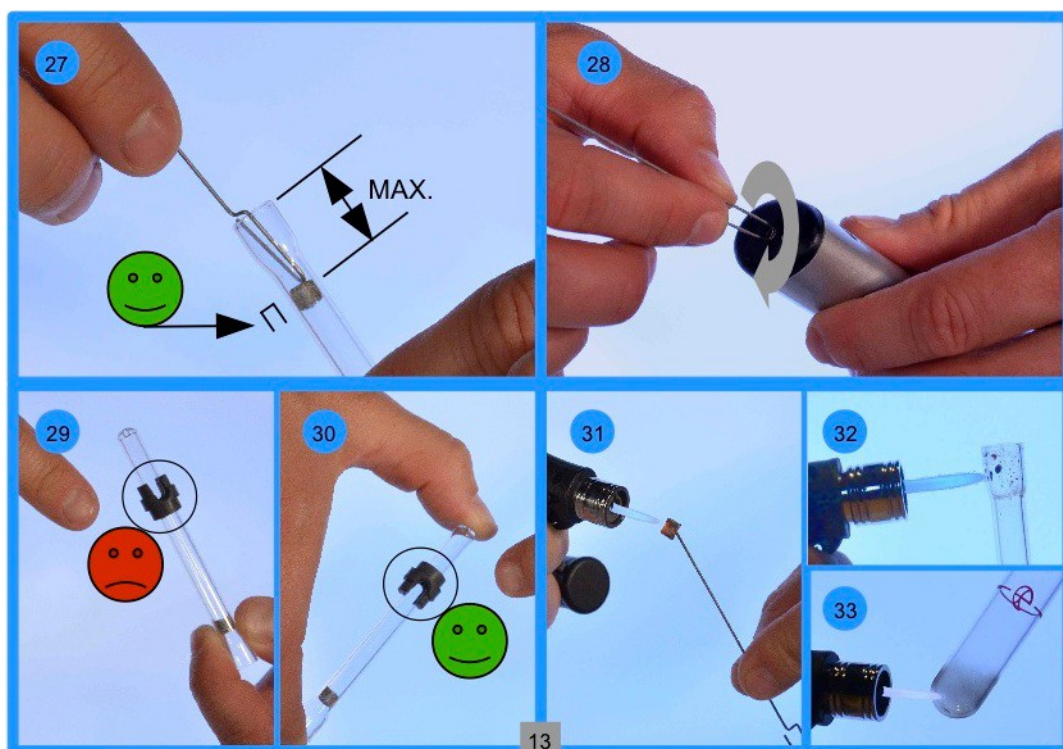
Holding the steel filter if you needed to burn it for cleaning purposes (image 31)

Adjusting the strength of the flame of the lighter (image 28)

## Troubleshooting and Cleaning

One of the two only reasons that may cause a Vaponic to malfunction is to put the silicone connecting piece up side down on the inner glass tube (image 29 + 30). The second reason is a blocked filter. You can easily find out if it's blocked by trying to blow through the inner tube. The typical 'dirt' produced by vaporizing is a thin layer of usually yellowish resin. The resin itself actually only contains the plant's substances and therefore can't really be considered dirt, but it can block the filter. If the filter is blocked, then the air stream can't find it's way any longer hence stopping one's ability to vaporize properly. That said, the resin that collects on the thin steel screen filter usually ends up being vaporized when the Vaponic is heated up and used again. The screen is not likely to get blocked. Still, if you really needed to clean your filter, then you should either do it with ethyl alcohol or burn it with a flame. The latter will help dissolve even more solid dirt (image 31) and can also be used to clean efficiently even extremely resistant dirt ('dark shadows') inside the filling chamber (image 32) and/or the end of the outer tube (image 33). Make sure to let the glass cool down on its own! The filter and the inner tube can be cleaned as described. For

the cleaning of the other parts – silicone connecting piece, outer tube and mouthpiece – it is best to use a tissue and ethyl alcohol.



## Warranty

The Vaponic has a two-year warranty on the glass pieces, the rubber pieces and the marker shaped case. Please note that the red imprint on the outer tube will withstand heat (avoid direct flame exposure), alcohol and dishwashing detergents amongst other cleansing products. Nevertheless there are cosmetic products (some hand creams e.g.) that can eventually harm the colors. Damage to the imprint is not covered by the warranty.

As for the filter screen it won't break with correct usage. The dirtying of the filter is influenced by the herbal blend or tobacco you've chosen, which is up to your responsibility. If you want to replace it you can obtain our steel filters as well as any other spare part either from [www.dutch-headshop.com](http://www.dutch-headshop.com) store or on [www.vaponic.com](http://www.vaponic.com). We are proud of our customer service. Please don't hesitate to contact us directly using our contact form or sending an e-mail to [info@vaponic.com](mailto:info@vaponic.com).

The Vaponic team will do it's best to help you.