

# SCANNER



## *User's Guide*

Genius Scanner

Discover New  Genius

[www.geniusnet.com.tw](http://www.geniusnet.com.tw)

*All trademarks and brand names mentioned in this publication are property of their respective owners.*

*© 2003 KYE Systems Corp. All rights reserved. No portion of this document may be reproduced without permission.*

# Table of Contents

<b>INTRODUCTION .....</b>	<b>1</b>
How to Use This Guide .....	1
Conventions of this Guide.....	2
A Note about Icons .....	2
System Requirements .....	2
Package Contents .....	3
<b>CHAPTER I. INSTALLING GENIUS SCANNER.....</b>	<b>4</b>
Software Requirements .....	4
Hardware Requirements.....	4
Installing and Setting up the Scanner .....	5
<i>Step 1. Connecting the Genius Scanner to Your Computer .....</i>	<i>5</i>
<i>Step 2. Installing the Software.....</i>	<i>6</i>
Software Setup Troubleshooting .....	7
Installing Additional Software.....	7
Uninstalling the Scanner.....	7
<i>Uninstall from the "Start Menu" (Uninstall Wizard) .....</i>	<i>8</i>
Scanner Setup After Windows XP Upgrade .....	8
<b>CHAPTER II. USAGE AND MAINTENANCE.....</b>	<b>9</b>
Operating the Scanner.....	9
Testing the Scanner.....	10
Scan and Image Editing.....	11
Scanner Utility Program.....	12
<i>Calibrating the Scanner .....</i>	<i>13</i>
<i>Aligning the Scanner .....</i>	<i>13</i>
Maintenance .....	13
<b>CHAPTER III. HOW TO USE QUICK FUNCTION BUTTONS.....</b>	<b>15</b>
"SCAN" Button .....	15
<i>To Set up the Default Application Program .....</i>	<i>15</i>
<i>To Use the "SCAN" Button .....</i>	<i>16</i>
"E-MAIL/WEB" Button.....	16
<i>To Set a Default Simple MAPI Client (i.e. Outlook Express).....</i>	<i>17</i>
<i>To Set Up the " E-MAIL/WEB " Button .....</i>	<i>17</i>
<i>To Use the " E-MAIL/WEB " Button.....</i>	<i>18</i>
"TEXT/OCT" Button .....	19
<i>To Set Up Editor .....</i>	<i>19</i>
<i>To Use the "TEXT/OCT" Button .....</i>	<i>20</i>
"PRINT/COPY" Button .....	20

<i>To Set Up Printer</i> .....	20
<i>To use "PRINT/COPY" Button</i> .....	21
"FILE/FAX" Button .....	22
<i>To Set Up the Software for "FILE/FAX" button</i> .....	22
<i>To use "FILE/FAX" Button</i> .....	23
<b>APPENDIX A: SPECIFICATIONS</b> .....	<b>25</b>
<b>APPENDIX B: CUSTOMER SERVICE AND WARRANTY</b> .....	<b>26</b>
Statement of Limited Warranty .....	26
FCC Radio Frequency Statement .....	27
<b>CONTACTING GENIUS</b> .....	<b>29</b>

# Introduction

Welcome to the world of Genius scanners, the ultimate in imaging. Your new scanner will improve the professionalism of your day-to-day computing tasks by allowing you to input images and electronic text into your computer system.

Like all of our products, your new scanner is thoroughly tested and backed by our reputation for unsurpassed dependability and customer satisfaction.

The last page of this user's manual provides more information for contacting Genius Service Center. Please feel free to contact us or visit GeniusLife Homepage (<http://www.geniusnet.com.tw>) for getting better service.

Thank you for choosing Genius Product. We hope you will continue to turn to us for additional quality products as your computing needs and interests grow.

## How to Use This Guide

This User's Guide provides instructions and illustrations on how to install and operate your scanner. This guide assumes the user is familiar with the Microsoft Windows XP/Me/2000/98. If this is not the case, we suggest you learn more about Microsoft Windows by referring to your Microsoft Windows manual before using your scanner.

The **Introduction** section of this manual describes the box contents and minimum computer requirements to use this scanner. Before you start installing your Genius scanner, check the box contents to make sure all parts are included. If any items are damaged or missing, please contact the vendor where you purchased your scanner or Genius' customer service directly at one of the locations listed at the back of this manual.

**Chapter I** describes how to install scanner's software and connect the scanner to your computer.

Note: The scanner connects to your computer through the Universal Serial Bus (USB). If your computer does not support USB technology, you will need to purchase a USB interface card to add USB capabilities to your computer, or buy and install USB connectors if your motherboard has USB capabilities. This guide assumes that your computer is USB-ready and has a free USB port.

**Chapter II** describes how to test, maintain and clean your scanner. It also describes how to use the Scanner Utility Program which helps you troubleshoot and fix connection problems which may have occurred during the scanner installation.

**Chapter III** contains some basic descriptions on how to use your scanner. More detailed descriptions can be found by using the Help function in the relevant scanner programs.

**Appendix A** contains the Specifications of this Genius scanner.

**Appendix B** contains Genius' limited warranty agreement and FCC statement concerning the product.

## Conventions of this Guide

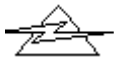
---

**Bold** — Important note or first use of an important term in a chapter.  
**ALL CAPS** — Represents commands or contents on your computer screen.

## A Note about Icons

---

This guide uses the following icons to point out information that deserves special attention.



**Danger**

**Danger:** A procedure that must be followed carefully to prevent injury, or accidents.



**Caution**

**Caution:** Information that, if not followed, may result in data loss or damage to the product.



**Attention**

**Pay Special Attention:** Instructions that are important to remember and may prevent mistakes.

## System Requirements<sup>1</sup>

---

- Windows/Intel Compatible Personal Computer
- Pentium II or above
- CD-ROM Drive
- 64 MB RAM (128 MB Recommended)
- 250 Free Hard Disk Space
- USB Port
- Microsoft™ Windows XP/Me/2000/98

**NOTE:** Windows NT 4.0 does not support Universal Serial Bus (USB) connectivity.

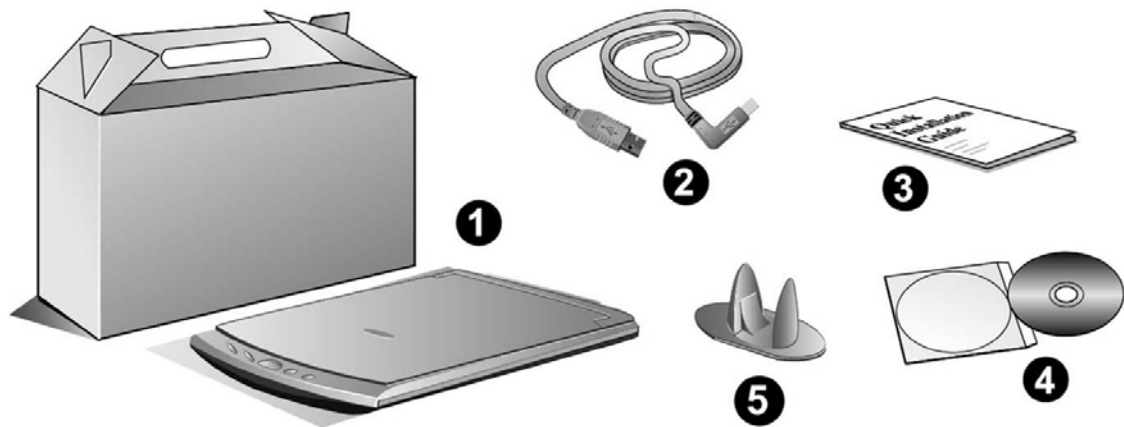
- Video card that supports 16-bit color or greater

---

<sup>1</sup> Higher requirements might be needed when you scan or edit a large quantity of image data. The system requirements herein are only a guideline, as in general the better the computer (motherboard, processor, hard disk, RAM, video graphic card), the better the results.

## Package Contents<sup>2</sup>

---



1. The Scanner<sup>3</sup>
2. USB Cable
3. Quick Installation Guide
4. Setup / Application CD-ROM includes the following software applications<sup>4</sup>
  - Scanner Setup Program
  - Genius TWAIN Program
  - NewSoft Presto! PageManager (Photo Management Software)
  - NewSoft Presto! ImageFolio (Imaging Editing Software)
  - NewSoft Presto! Mr. Photo (Web Photo Software)
  - Bridgewell Page abc (Web Editing Software)
  - ABBYY FineReader 5.0 Sprint (Text Recognition Software)
  - Adobe Acrobat Reader (PDF Product Manuals Reading Program)
  - This User's Guide (Electronic Version)
5. Base Stand

---

<sup>2</sup> Save the box and packing materials in case you need to transport this scanner in the future.

<sup>3</sup> The scanner illustration(s) may appear different than from the actual scanner itself.

<sup>4</sup> The bundled software may change at any time without prior notice.

# Chapter I.

## Installing Genius Scanner

Before installing your scanner, please verify that you have all of the proper components. A list of the package contents is provided in this guide.

### Software Requirements

---

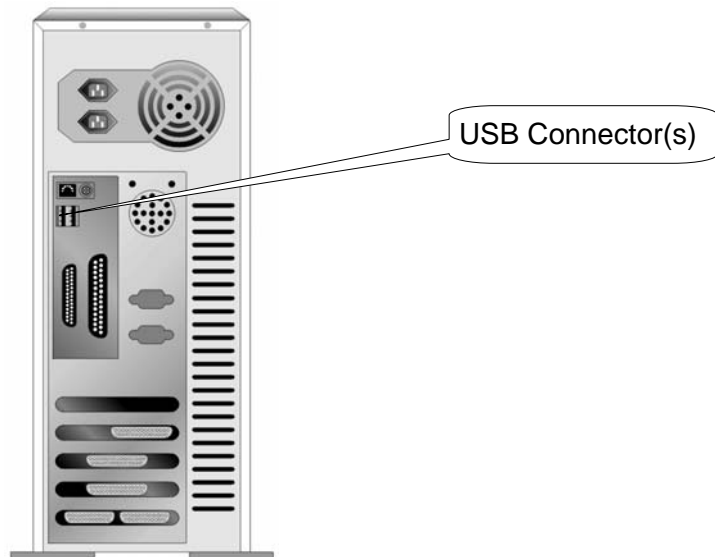
Your scanner comes with the software of NewSoft Presto! ImageFolio, ABBYY FineReader 5.0 Sprint, NewSoft Presto! PageManager, NewSoft Mr. Photo, Bridgewell Page abc, Adobe Acrobat Reader, the scanner's driver, Scanner Utility, and Genius TWAIN Program. All of these software applications use approximately 160 megabytes of hard disk space after they are installed into your computer. To ensure ample room for the installation, as well as for scanning and saving images, a minimum of 250 megabytes of hard disk space is recommended.

### Hardware Requirements

---

This scanner connects to your computer through the Universal Serial Bus (USB) which supports hot Plug and Play. To determine whether your computer is USB-capable, you must check the rear of your PC to locate a USB jack that looks the same as the one pictured below. Note that on some computers, the USB port at the rear of the computer may be occupied and additional ports may be found on the monitor or keyboard. If you are having trouble in locating the USB port on your computer, please refer to the hardware manual that came with your computer.

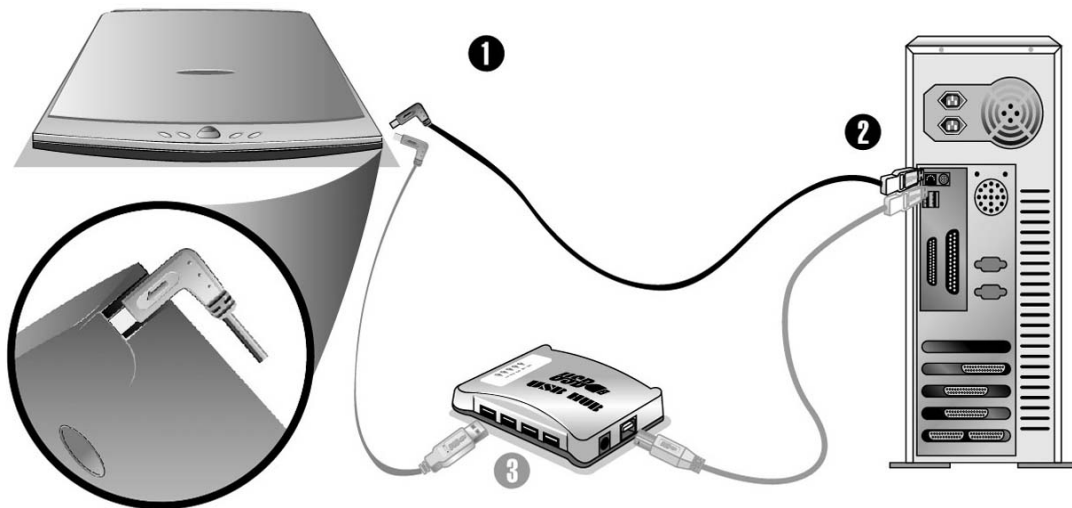
Upon examination, you should find one or two rectangular USB ports, which usually appear as shown below.



If you don't find such USB ports on your computer, then you need to purchase a certified USB interface card to add USB capabilities to your computer.

## **Installing and Setting up the Scanner**

### **Step 1. Connecting the Genius Scanner to Your Computer**



1. Plug the square end of the included USB cable to the USB port of the scanner.
2. Plug the rectangular end of the USB cable to the USB port on the back of your computer.

**Note:** If there is another USB device connected to the computer, connect the scanner to an available USB port.



3. If you plan to connect your scanner to a USB hub<sup>5</sup>, make sure that the hub is connected to the USB port in your computer. Next, connect the scanner to the USB hub.

**Note:** If you do not have a USB port available, you might need to buy a USB port.

## Step 2. Installing the Software

1. If the USB components on your computer are functioning correctly, they will automatically detect the scanner causing the “Add New Hardware Wizard” or “Found New Hardware Wizard” to be launched.
2. **For Windows 98 & 2000**
  - a. Click on the [Next] button when the “Add New Hardware Wizard” window is displayed.
  - b. Select “SEARCH FOR THE BEST DRIVER FOR YOUR DEVICE [RECOMMENDED]” and click on the [Next] button.
  - c. The next window will ask you where to search to find the drive. Select [CD-ROM drive], and deselect [Floppy disk drives] if it is checked.
  - d. Insert the Setup/Application CD-ROM, included with your scanner, into your CD-ROM drive and then click on the [Next] button.
  - e. Click on the [Next] button in the window that appears. Afterwards, for Windows 98 users, please skip to Step 4.
  - f. **Windows 2000 users** – During the process of the installation, a message “Digital Signature required” might be prompted. Please ignore it, and click on [Yes] to continue the installation without any misgiving at your scanner functioning. Afterwards, please skip to Step 4.
3. **For Windows XP & Me**
  - a. Insert the Setup/Application CD-ROM, included with your scanner, into your CD-ROM drive.
  - b. Select “INSTALL THE SOFTWARE AUTOMATICALLY [RECOMMENDED]” and click on the [Next] button.
  - c. Click on the [Next] button in the window that appears.
4. When the system completes the installation, click on the [Finish] button.
5. Follow the on-screen instructions to install all software that your new USB scanner requires.
6. After the software is installed, close all open applications and click on the [Finish] button to restart your computer.

---

<sup>5</sup> The USB hub is not included with the scanner.



### Attention

---

If the scanner installation is not started and displayed automatically on the screen, click START, select RUN and type in "d:install" (where d: is the drive letter assigned to the CD-ROM drive of your computer)

---

## Software Setup Troubleshooting

---

Carefully review the steps outlined in this guide and the Quick Installation Guide that accompanied your scanner.

If you are still having problems, please check that:

- You have 250MB of free space on your hard disk drive.
- The scanner is plugged in and has power.
- You are using the USB cable supplied with the scanner.
- The square end of the USB cable is plugged into the rear of the scanner.
- The rectangular end of the USB cable is plugged into the back of your computer.

If you deviated from the installation procedures defined in this manual, please unplug the USB cable from the scanner and reinstall the software from the CD-ROM. To reinstall your scanner's software, click START, RUN, then type D:\Install (where D represents the letter of your CD-ROM drive). Carefully follow all the installation instructions presented in the Setup Wizard. Reboot your computer when prompted, and plug the USB cable back into the scanner while your computer is still turned on.

If you still need support, you can contact Genius at any office listed on the last page of this guide during normal business hours in that area.

## Installing Additional Software

---

Your scanner is TWAIN compliant and functions with virtually all available TWAIN compatible program. If you purchase additional program to be used with your scanner, please make sure that it conforms to the TWAIN standard.

## Uninstalling the Scanner

---

Windows XP/Me/2000/98 provides an Uninstall Wizard for uninstalling your scanner software driver and application programs:

## **Uninstall from the “Start Menu” (Uninstall Wizard)**

1. From the Windows Start menu, select Programs, and then the model name of the scanner you have installed.
2. From the drop-down menu, select Uninstall.
3. A window will pop up, asking you to confirm the deletion of the selected application and all of its components. Click OK and the UninstallShield program will run automatically and delete the scanner software driver.
4. Once completed, restart Windows.

## **Scanner Setup After Windows XP Upgrade**

---

If you plan to upgrade your operating system from Windows 98 or Me to Windows XP after having installed the scanner software, please follow the instructions below:

1. Unplug the scanner's AC power adapter from the electrical outlet.
2. Unplug the scanner's USB cable from the rear of the computer.
3. From the Windows START menu, click on “Programs” and then “COLORPAGE-XXXX” (your scanner model name). In the pop-up menu that opens, click on “Uninstall Genius Scanner”. Follow the on-screen instructions to remove all the scanner software.
4. After uninstallation completes, close all open applications and click the “Finish” button to restart your computer.
5. Start installing your Windows XP upgrade software by following Microsoft's related procedures.
6. When the Windows XP upgrade is done, re-install the scanner's hardware and software. Refer to the scanner setup quick guide for details.

## Chapter II. Usage and Maintenance

### Operating the Scanner

---

Your scanner accepts documents as small as business cards and as large as letter-sized documents. However, some software programs have limitations as to the information they can handle. The capacity of the computer's memory and free space on your hard drive can also limit the physical size of the document that you scan.

There are two different ways to operate the scanner:

1. From within an image-editing program that can acquire images from the scanner.
2. By using the Genius Scan Manager program that is automatically installed as your scanner software.

Your scanner needs to be driven by some type of software program. Since all documents or images (whether text or pictures) that are acquired from the scanner are treated by your computer as images, most scanning will probably be done from an image-editing program where you can view, edit, save and output the scanned images. An image-editing program has been bundled with your scanner on the included Setup/Application CD-ROM. It will allow you to alter and correct any scanned images by using a variety of filters, tools and effects.

What about scanning text documents and editing them in a word processor? This is the role of Optical Character Recognition (OCR) software. OCR software converts the image files that are created from scanning text documents into text files that can be viewed, edited and saved by word processors. An OCR program has also been bundled on the included Setup/Application CD-ROM, and if you wish to use the scanner in this way you should install the OCR software that is included.

Genius Scan Manager program is a program that allows you to conveniently scan images and text without the need to work directly within any image-editing application (i.e. Presto! ImageFolio). Genius Scan Manager program also includes features to allow you to use your scanner as fax<sup>6</sup> and copy machines<sup>7</sup>. Refer to Chapter III of this User's Guide for details about how to use this Scan Manager program with your scanner buttons.

---

<sup>6</sup> A fax/modem and fax software is required to send faxes.

<sup>7</sup> A printer is required to make copies of document.

# Testing the Scanner

---

The following test procedure checks to see if the scanner is properly functioning with your computer and the scanning program. Before testing your scanner, check to make sure that all connections are securely fastened.

To properly test your scanner, please perform the following steps:

1. Open the scanner's document cover and place a picture onto the scanner glass headfirst and face-down.



2. Gently close the document cover.
3. Next, open the scanner's image-editing program. Click on the Windows START button and then PROGRAMS, PRESTO! IMAGEFOLIO, and then PRESTO! IMAGEFOLIO.
4. When Presto! ImageFolio opens, click on FILE and then SELECT SOURCE. In the window that opens, choose the model name of the scanner you have installed. Click on the SELECT button to close the window. This procedure allows Presto! ImageFolio to gain access to the scanner.
5. Within Presto! ImageFolio, click on FILE, ACQUIRE and then choose ACQUIRE.
6. The Genius TWAIN window will open.
7. If an image appears on your screen, your scanner is working properly. If the image doesn't appear to your liking, you might need to adjust some settings in the Genius TWAIN window. To learn how to adjust scanner settings, please refer to the Genius Help by clicking the Help button in the Genius TWAIN window.

# Scan and Image Editing

---

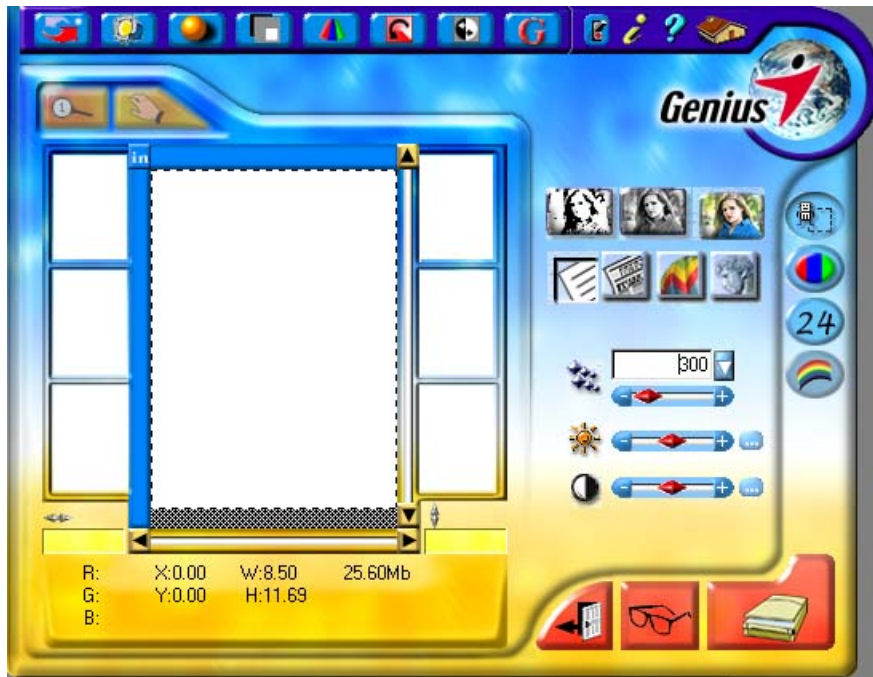
Genius scanner provides two different ways for scanning:

## ***From “SCAN” Hotkey --***

1. Open the document cover. Place a picture headfirst and face down onto the scanner glass and close the document cover.
2. Press the “**Scan**” hot key button on the scanner.
3. After the **Presto! PageManager** software is launched, the **Genius TWAIN** window will appear and start to prescan automatically.
4. Select the appropriate scan mode and resolution, if desired. To proceed the scanning task, click the **SCAN** button from **Genius TWAIN** window.
5. The scanned image will be saved into **Presto! PageManager** software after the scan completes.
6. Click the **CLOSE** button to close the **Genius TWAIN** window and you may review the scanned image under the folder of **INBOX** in **PageManager** software.

## ***From image-editing software --***

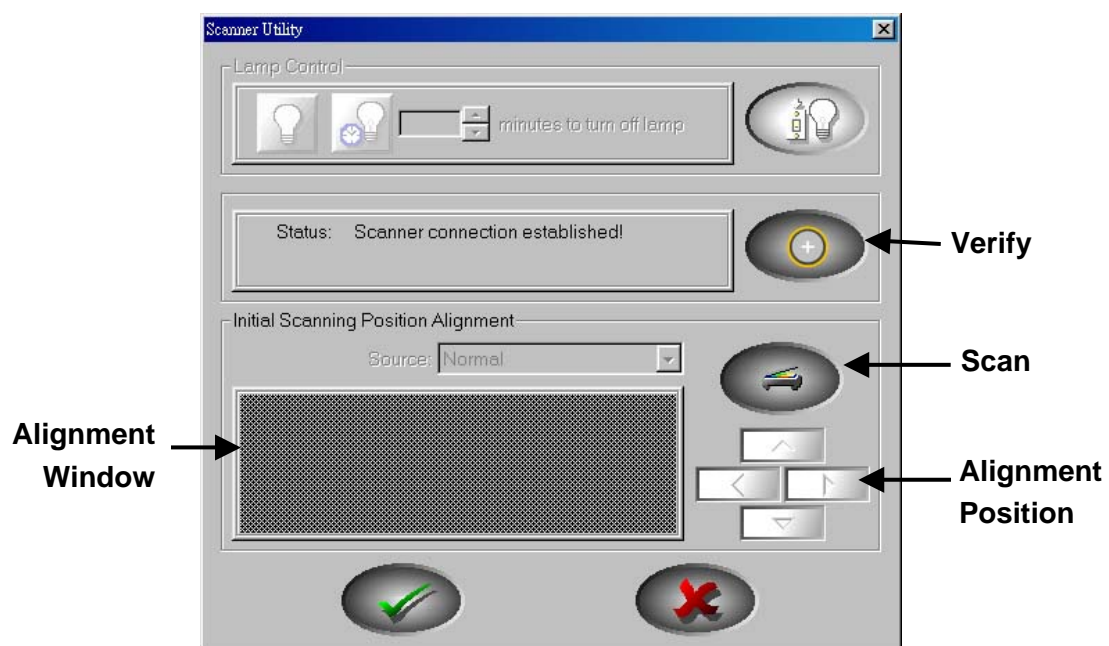
1. Open the document cover. Place a picture headfirst and face down onto the scanner glass and then close the document cover.
2. Open **Presto! ImageFolio**, and click on FILE, ACQUIRE, and then choose ACQUIRE to open the Genius TWAIN window.
3. Select the appropriate scan mode and resolution, if desired. To proceed scanning task, click the **SCAN** button from **Genius TWAIN** window.
4. When you complete the scanning task, click the **CLOSE** button to close the **Genius TWAIN** window, and you may review the scanned image in **Presto! ImageFolio** software.



## Scanner Utility Program

The Scanner Utility Program can help you get your new scanner up and running. In addition, it contains a number of other features to help you tailor and control the scanner.


The Scanner Utility also allows you to define the exact position on the scanning glass where scanning will begin. The scanner was tuned to its optimal working condition at factory, but some refinement of the initial scanning position may still be necessary.



## Calibrating the Scanner

Calibrate the scanner if colors appear in areas that should be white, vertical lines appear in the preview image, or colors of the preview image and the original vary a lot. This allows you to adjust and compensate for variations which can occur in the optical component over time by its nature.



To do this, please run the Scanner Utility program as described below:

1. Click on the Windows START button, then choose PROGRAMS, COLORPAGE-XXXX (your scanner model name) and then SCANNER UTILITY.
2. Click on the CALIBRATE button  to start this calibration process to produce more accurate or desirable output.

## Aligning the Scanner

In most cases, the scanner doesn't need to be aligned but there are instances when the alignment might be required. You need to align the scanner only if parts of the scanned document are missing from any of its edges. For example, the heading of a document might be missing from the top edge after the document has been scanned.

To align the scanner, follow the steps below:

1. Place a photograph on the top right side of the scanner glass (near the back of the scanner). Please note that only part of the photograph will be scanned.
2. Click on the SCAN button . Part of the photograph will be displayed in the ALIGNMENT window.
3. Click on the ALIGN POSITION buttons until the top left corner of the scanned photograph aligns with the top left corner of the preview window.
4. Click on the check mark button  when the alignment has been completed.

## Maintenance

---

To keep your scanner working smoothly, take a moment to review the following maintenance tips.



### Caution

- Avoid using the scanner in a dusty environment. When it is not in use, keep the scanner covered. Dust particles and other foreign objects may damage the unit.
- Do not attempt to disassemble the scanner. There is danger of an electrical shock and opening your scanner will void your warranty.
- Do not subject the scanner to excessive vibration. It may damage the internal components.



- Be sure not to bump or knock the scanner glass as it is fragile and could break.
- Clean the scanner glass by lightly spraying a non-abrasive glass cleaner onto a soft lint-free cloth. Then, wipe the glass thoroughly with the cloth. DO NOT SPRAY CLEANER DIRECTLY ONTO THE SCANNER GLASS. Excess liquid residue may fog or damage the scanner.
- Your scanner operates best in temperatures between 10° C to 40° C (50° F to 104° F).

## Chapter III. How to Use Quick Function Buttons

This scanner is featured with five function buttons on the front panel to make your scanning experience more convenient and efficient.

Each button launches a specialized utility designed to make scanning quick and easy while giving you complete control over the scanning process.



### Attention

---


Before using the function buttons on the scanner, please ensure that the required application software has been installed completely.

---

## "SCAN" Button

Ensure that the **"NewSoft Presto! PageManager"** software is installed before using the Scan hotkey; otherwise the automatic scan and file saving function will not work properly.

### To Set up the Default Application Program

1. Open the **"Scan Manager Setting"** window by clicking on the Windows START button and choose PROGRAM, Genius Scanner (the model name of your scanner), KYESCAN.
2. Click the  icon on the bottom right corner of the screen to open the **"Scan Manager Setting"** window.
3. Click on the **"SCAN"** tab in the **"Scan Manager Setting"** window.
4. Choose **"NewSoft PageManager"** or other application in the **"Application"** drop-down menu.
5. Click on **"Close"** to complete setting.



### Attention

---

If you check **"Automatically scan after preview completing (flatbed)"**, your scanner will start scanning directly after prescanning completes.

---



## To Use the “SCAN” Button

1. Place a document or picture face down on the scanning glass.
2. Press the “**SCAN**” Button on the scanner.  

Note: Skip to step 5, if you have checked “*Automatically scan after preview completing (flatbed)*” within Scan Manager.
3. The “**PageManager**” will be launched with the “Genius TWAIN” displayed on the screen.
4. Press Scan button on the Genius TWAIN window to start scanning.
5. The scanned file will be saved automatically under the folder of “**INBOX**” in “**PageManager**” software.
6. To scan another image, press the Scan button on the Genius TWAIN window again. Repeat the above steps until all the scanning tasks are completed.

## "E-MAIL/WEB" Button

---


Ensure that you have already installed the “E-mail program” (supporting MAPI protocol) or “Bridgewell Page abc” software in your computer before using the “E-mail/Web button” as the “E-mail button” or the “Web button”.

## To Set a Default Simple MAPI Client (i.e. Outlook Express)


1. Choose **Program** in the **Start Menu**.
2. Select "Outlook Express."
3. In the drop-down menu of Tools, select options → Select "Make Outlook Express as my default email program" and "Make Outlook Express as my default Simple MAPI client."

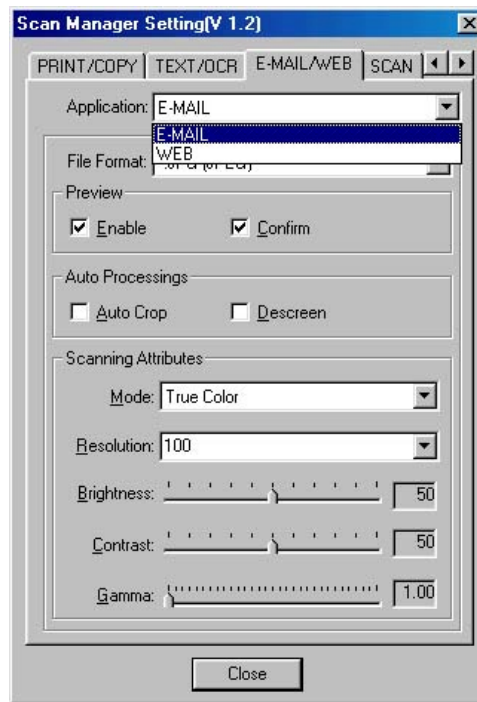
## To Set Up the " E-MAIL/WEB " Button

### **"Scan to E-mail" Function**

1. Open the **"Scan Manager Setting"** window by clicking on the Windows START button and choose PROGRAM, Genius Scanner (the model name of your scanner), KYESCAN.
2. Click the  icon on the bottom right corner of the screen to open the **"Scan Manager Setting"** window.
3. Click on the **"E-MAIL/WEB"** tab in the **"Scan Manager Setting"** window.
4. Choose **"E-mail"** as the in the drop-down **"Application"** menu.
5. Check **"Enable"** and **"Confirm"** under **"Preview"** if you require the system to automatically generate a preview image before proceeding scan.
6. Adjust or select proper scanning attributes, if necessary.
7. Click on **"Close"** to complete setting.

### **"Scan to Web" Function**

1. Open the **"Scan Manager Setting"** window by clicking on the Windows START button and choose PROGRAM, Genius Scanner (the model name of your scanner), KYESCAN.
2. Click the  icon on the bottom right corner of the screen to open the **"Scan Manager Setting"** window.
3. Click on the **"E-MAIL/WEB"** tab in the **"Scan Manager Setting"** window.
4. Choose **"Page abc"** software in the drop-down **"Application"** menu.
5. Check **"Enable"** and **"Confirm"** under **"Preview"** if you require the system to automatically generate a preview image before proceeding scan.
6. Adjust or select proper scanning attributes, if necessary.
7. Click on **"Close"** to complete setting.



## To Use the " E-MAIL/WEB " Button

### As "Scan to E-mail" Function

1. Place a document or picture face down on the scanning glass.
2. Press the **"E-MAIL/WEB"** Button on the scanner.  
**Note:** Skip to step 5, if you did not have **"Enable"** and **"Confirm"** checked under **"Preview"** in Scan Manager.
3. The scanner will start prescanning automatically.
4. Click on the **"Mail"** button in the **"PRESCAN"** window to start scanning.
5. Click on **"Yes"** button to continue scanning the next page.
6. Click on **"No"** button when you finish scanning. At the meanwhile, your mail system will be opened, and the scanned images will be transferred as attachments of a new mail.

### As "Scan to Web" Function

1. Place a document or picture face down on the scanning glass.
2. Press the **"E-MAIL/WEB"** Button on the scanner.  
**Note:** Skip to step 5, if you did not have **"Enable"** and **"Confirm"** checked under **"Preview"** in Scan Manager.
3. The scanner will start prescanning automatically.


4. Click on the **“Scan to Web”** button in the **“PRESCAN”** window to start scanning.
5. Click on **“Yes”** button to continue scanning the next page.
6. Click on **“No”** button when you finish scanning. At the meanwhile, the scanned image files will be transferred into **“Page abc”** Web Editing software.

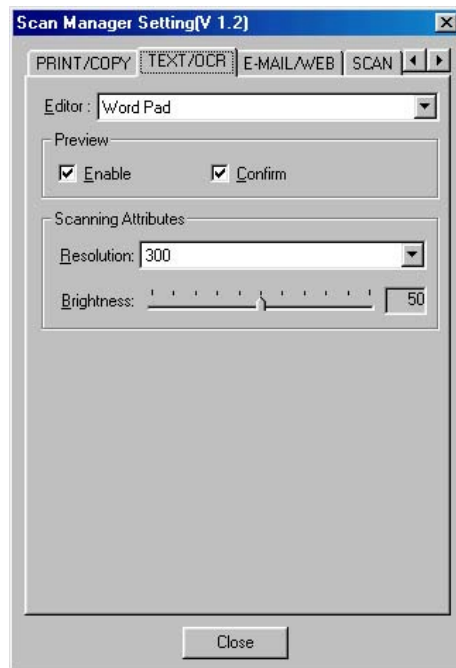
## "TEXT/OCT" Button

---

Please install and set up **ABBYY FineReader Sprint 4.0** OCR software before using this function.

### To Set Up Editor

1. Open the **“Scan Manager Setting”** window by clicking on the Windows START button and choose PROGRAM, Genius Scanner (the model name of your scanner), KYESCAN.
2. Click the  icon on the bottom right corner of the screen to open the **“Scan Manager Setting”** window.
3. Click on the **“TEXT/OCR”** tab in the **“Scan Manager Setting”** window.
4. Choose a proper word processor in the drop-down **“Editor”** menu.
5. Check **“Enable”** and **“Confirm”** under **“Preview”** if you require the system to automatically generate a preview image before proceeding scan.
6. Adjust or select proper scanning attributes for scanning Reflection Object, if necessary.
7. Click on **“Close”** to complete setting.



## To Use the “TEXT/OCR” Button

1. Place a typewritten text document face down on the scanning glass.
2. Press the “**TEXT/OCR**” Button on the scanner
 

**Note:** Skip to step 5, if you did not have “**Enable**” and “**Confirm**” checked under “**Preview**” in Scan Manager.
3. The scanner will start prescanning automatically.
4. Click on the “**OCR**” button in the “**PRESCAN**” window to start scanning.
5. Click on “**Yes**” button to continue scanning the next page.
6. Click on “**No**” button when you finish scanning.
7. Word processing software will be launched and the recognized text will be transferred to the default word processing software.


## "PRINT/COPY" Button

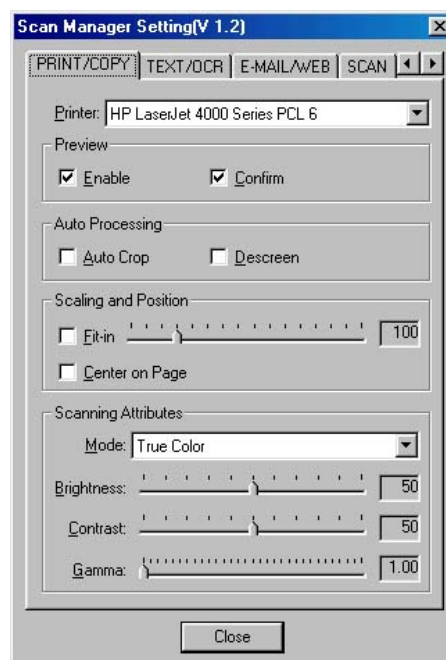
---

Ensure to install and set up a printer driver before using this function.

## To Set Up Printer

1. Open the “**Scan Manager Setting**” window by clicking on the Windows START button and choose PROGRAM, Genius Scanner (the model name of your scanner), KYESCAN.

2. Click the  icon on the bottom right corner of the screen to open the **“Scan Manager Setting”** window.
3. Click on the **“PRINT/COPY”** tab in the **“Scan Manager Setting”** window.
4. Select a proper printer from the drop-down **“PRINTER”** menu.
5. Check **“Enable”** and **“Confirm”** under **“Preview”** if you require the system to automatically generate a preview image before proceeding scan.
6. Adjust or select proper scanning attributes for scanning Reflection Object
7. Click **“Close”** to complete setting.



## To use **“PRINT/COPY”** Button

1. Place a document or picture face down on the scanning glass.
2. Press the **“PRINT/COPY”** Button on the scanner
 

**Note:** Skip to step 5, if you did not have **“Enable”** and **“Confirm”** checked under **“Preview”** in Scan Manager.
3. The scanner will start prescanning automatically.
4. Click on the **“Print”** button in the **“PRESCAN”** window to start scanning.
5. Click on **“Yes”** button to continue scanning the next page.
6. Click on **“No”** button when you finish scanning.
7. The scanned images will printed out from your printer.




## "FILE/FAX" Button

---


Ensure that you have already installed the **PC Fax** software or "**NewSoft PageManager**" software in your computer before using the "**FILE/FAX**" button as the "**FILE**" button or the "**FAX**" button"

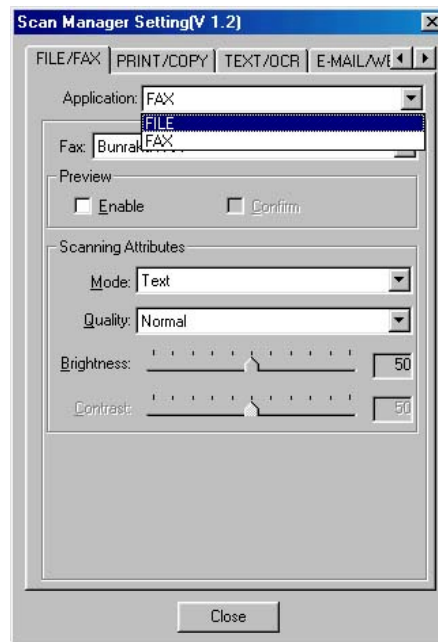
### To Set Up the Software for "FILE/FAX" button

#### "FILE" Function

1. Open the "**Scan Manager Setting**" window by clicking on the Windows START button and choose PROGRAM, Genius Scanner (the model name of your scanner), KYESCAN.
2. Click the  icon on the bottom right corner of the screen to open the "**Scan Manager Setting**" window.
3. Click on the "**FILE/FAX**" tab in the "**Scan Manager Setting**" window.
4. Choose **File Software ("Scan Manager")** in drop-down "**Application**" menu.
5. Check "**Enable**" and "**Confirm**" under "**Preview**" if you require the system to automatically generate a preview image before proceeding scan.
6. Adjust or select proper scanning attributes, if necessary.
7. Click "**Close**" to complete setting.

#### "FAX" Function

1. Open the "**Scan Manager Setting**" window by clicking on the Windows START button and choose PROGRAM, Genius Scanner (the model name of your scanner), KYESCAN.
2. Click the  icon on the bottom right corner of the screen to open the "**Scan Manager Setting**" window.
3. Click on the "**FILE/FAX**" tab in the "**Scan Manager Setting**" window.
4. Choose **PC Fax software** in drop-down "**Application**" menu.
5. Check "**Enable**" and "**Confirm**" under "**Preview**" if you require the system to automatically generate a preview image before proceeding scan.
6. Adjust or select proper scanning attributes for scanning Reflection Object.
7. Click "**Close**" to complete setting.



## To use “FILE/FAX” Button

### As “Scan to File” function

1. Place a document or picture face down on the scanning glass.
2. Press the “**FILE/FAX**” Button on the scanner,  
**Note:** Skip to step 5, if you did not have “**Enable**” and “**Confirm**” checked under “**Preview**” in Scan Manager.
3. The scanner will start prescanning automatically.
4. Click on the “**Scan to Album**” button in the “**PRESCAN**” window to start scanning.
5. Click on “**Yes**” button to continue scanning the next page.
6. Click on “**No**” button when you finish scanning.
7. The Scanned Images will be filed into the default folder of “**PageManager**”.

### As “Scan to Fax” function

1. Place a document or picture face down on the scanning glass.
2. Press the “**FILE/FAX**” Button on the scanner.  
**Note:** Skip to step 5, if you did not have “**Enable**” and “**Confirm**” checked under “**Preview**” in Scan Manager.
3. The scanner will start prescanning automatically.

4. Click on the **“Fax”** button in the **“PRESCAN”** window to start scanning.
5. Click on **“Yes”** button to continue scanning the next page.
6. Click on **“No”** button when you finish scanning.
7. Fax Application Window will be opened. Following the screen instructions to proceed fax transmission.

## Appendix A: Specifications

<b>Genius ColorPage-Slim 1200</b>	
Physical dimensions	378 x 257 x 33 mm
Weight	1.5 Kgs (3.3 Lbs)
Operating Temperature	10° C to 40° C (50° F to 104° F)
Max. Scan Area	Reflective: 8.5 x 11.69 in. (216 mm x 297 mm)
Scan Method	Single-Pass
Scan Modes	48 bit Color 8 bit Grayscale 1 bit Line-Art (Black & White)
Resolution	Optical 1200 dpi (24000 dpi software interpolated)
Scanning Materials	Reflective color or black-and-white originals
Protocols	TWAIN Compliant
Connection	USB Port
Light Source	Three-color RGB LEDs
Power Requirement	Powered through USB port. No AC power adaptor is required.
Power Consumption	Operation: 2.5 watts maximum Idle: 1.0 watts
EMI	FCC Class B

## Appendix B: Customer Service and Warranty

If you encounter problems with your scanner, please review the installation instructions and troubleshooting suggestions contained in this guide.

For further assistance call our customer support phone number listed on the last page of this guide. To avoid any delay, please have the following information available before calling:

- **Scanner name and model number**
- **Scanner serial number (located at rear of scanner near port connectors)**
- **A detailed description of the problem**
- **Your computer manufacturer and its model number**
- **The speed of your CPU (Pentium 133, etc.)**
- **Your current operating system and BIOS (optional)**
- **Name of program package(s), version or release number and manufacturer of the program**
- **Other USB devices installed**

We are continuously enhancing the performance of our product drivers. To check for the updated device driver you may visit our Web Site. (Please refer to the section of "Contacting Genius" on the last page of this manual.)

### Statement of Limited Warranty

---

This Statement of Limited Warranty applies only to the options you originally purchase for your use, and not for resale, from an authorized reseller.

If you transfer this product to another user, warranty service is available to that user for the remainder of the warranty period. You should give your proof of purchase to that user.

We warrant that this machine will be in good working order and will conform to its functional descriptions in the documentation provided. Upon provision of proof of purchase, replacement parts assume the remaining warranty of the parts they replace.

Before presenting this product for warranty service, you must remove all programs, data and removable storage media. Products returned without program will be replaced without program.

This Limited Warranty service does not provide for carry-in exchange when the problem results from accident, disaster, vandalism, misuse, abuse, unsuitable environment, program modification, Electro Static Discharge (ESD) damage, another machine or non-vendor modification for this product.

If this product is an optional feature, this Limited Warranty applies only when the feature is used in a machine for which it was designed.

If you have any questions about your Limited Warranty, contact Genius.

THIS LIMITED WARRANTY REPLACES ALL OTHER WARRANTIES, EXPRESS OR IMPLIED, INCLUDING, BUT NOT LIMITED TO, THE IMPLIED WARRANTIES OF MERCHANTABILITY AND FITNESS FOR A PARTICULAR PURPOSE. HOWEVER, SOME LAWS DO NOT ALLOW THE EXCLUSION OF IMPLIED WARRANTIES. IF THESE LAWS APPLY, THEN ALL EXPRESS AND IMPLIED WARRANTIES ARE LIMITED IN DURATION TO THE WARRANTY PERIOD. NO OTHER WARRANTIES APPLY AFTER THAT PERIOD.

Some jurisdictions do not allow limitations on how long an implied warranty lasts, so the above limitation may not apply.

Under no circumstances are we liable for any of the following:

1. Third party claims against you for losses or damages.
2. Loss of, or damage to, your records or data; or
3. Economic consequential damages (including lost profits or savings) or incidental damages, even if we are informed of their possibility.

Some jurisdictions do not allow the exclusion or limitations of incidental or consequential damages, so the above limitation or exclusion may not apply to you.

This Limited Warranty gives you specific legal rights, and you may also have other rights that vary from jurisdiction to jurisdiction.

## **FCC Radio Frequency Statement**

---

This equipment has been tested and found to comply with the limits for a Class B digital device, pursuant to part 15 of the FCC rules. These limits are designed to provide reasonable protection against harmful interference in a residential installation.

This equipment generates, uses and can radiate radio frequency energy and, if not installed and used in accordance with the instructions, may cause harmful interference to radio communications. However, there is no guarantee that interference will not occur in a particular television reception (which can be determined by turning the equipment off and on), the user is encouraged to try to correct the interference by one or more of the following measures:

- √ Reorient or relocate the receiving antenna.
- √ Increase the separation between the equipment and receiver.

- √ Connect the equipment to an outlet on a circuit different from that which the receiver is connected.
- √ Shielded interconnect cables and shielded power cord which are supplied with this equipment must be employed with this equipment to ensure compliance with the pertinent RF emission limits governing this device.
- √ Consult the dealer or an experienced radio/TV technician for help if the conditions persist.
- √ Changes or modifications not expressly approved by the manufacturer or authorized service center could void the users authority to operate this equipment.

## Contacting Genius

### USA & Canada

**KYE International Corp.**

Latin America  
Suite 110, 8400 NW 25<sup>th</sup> St.,  
Miami, FLORIDA 33162, U.S.A.  
Tel : 305-468-9250  
Fax : 305-468-9251  
Web Site: <http://www.genius-kye.com>

### Europe

**KYE Systems Europe GmbH**

Karl Benz Str. 9  
D-40764 Langenfeld, Germany  
Tel : (49) 21 73 9743-44  
Fax : (49) 21 73-9743-17  
Web Site: [genius@kye.me.uunet.de](mailto:genius@kye.me.uunet.de)

### Europe

**KYE Systems UK Ltd.**

Unit 4, 131 Beddington Lane,  
Croydon, Surrey. CR0 4TD, UK  
Tel : (44) 208 664 2727 (sales)  
(44) 208 664 2739 (Tech.  
Support)  
Fax : (44) 208 664 2721(sales)  
(44) 208 664 2740(Tech. Support)  
Web Site: <http://www.kye.co.uk>

### Asia Pacific

**KYE Systems H.K. Corp. Ltd.**

Unit 01, 17<sup>th</sup> Floor, Aitken Vanson Centre,  
No.61 Hoi Yuen Road, Kwun Tong,  
Kowloon, Hong Kong  
Tel : (852)2342 3813  
Fax : (852)2341 9517  
Web Site: <http://www.geniusnet.com.hk>

### Asia Pacific

**KYE Systems Corp.**

No.492, Sec. 5, Chung Hsin Rd., San  
Chung, Taipei Hsien, 241, Taiwan,  
R.O.C.  
Tel : (886) 2 2995-6645  
Fax : (886) 2 2995-6649  
Web site: <http://www.geniusnet.com.tw>

### Asia Pacific

**KYE Systems (M) SDN BHD**

NO. 2, Jalan BK 1/12, Kinrara Industrial  
Park  
Bandar Kinrara, 6 1/2 Miles, Jalan  
Puchong,  
58200 Kuala Lumpur, Malaysia  
Tel : (603) 575 1355  
Fax : (603) 575 6362 / 6962  
Web site: [sales\\_kye@kye-systems.com.my](mailto:sales_kye@kye-systems.com.my)