



InVivoScribe Technologies

6330 Nancy Ridge Drive, Suite 106
San Diego, CA 92121
USA

(858) 623-8105 – Phone

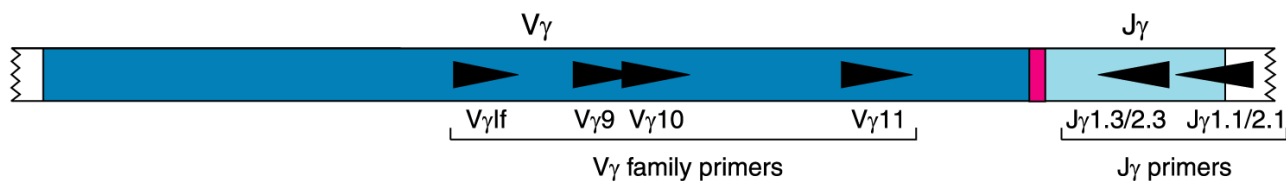
(858) 623-8109 – Fax

support@invivoscribe.com

www.invivoscribe.com

TCRG Gene Clonality Assay

For Identification of Clonal T Cell Receptor Gamma Chain Gene Rearrangements



TCRG tube A: V_γlf and V_γ10 primers + J_γ1.1/2.1 and J_γ1.3/2.3

TCRG tube B: V_γ9 and V_γ11 primers + J_γ1.1/2.1 and J_γ1.3/2.3

FOR RESEARCH USE ONLY
(Not for use in diagnostic procedures)

Storage Conditions: **-65°C to -85°C**

(DNA controls may be separated from assay kits and stored at 2°C to 8°C)

Catalog#	Products	Quantity
1-207-0020	TCRG Gene Clonality Assay for Gel Detection	33 Reactions
1-207-0021	TCRG Gene Clonality Assay for ABI Fluorescence Detection	33 Reactions
1-207-0024	TCRG Gene Clonality Assay for Cy5.0 Detection	33 Reactions
1-207-0040	TCRG Gene Clonality Assay MegaKit for Gel Detection	330 Reactions
1-207-0041	TCRG Gene Clonality Assay MegaKit for ABI Fluorescence Detection	330 Reactions
1-207-0044	TCRG Gene Clonality Assay MegaKit for Cy5.0 Detection	330 Reactions

Table of Contents

1. NOTICE	3
2. PRINCIPLE	3
3. ASSAY USES	4
4. SPECIMEN REQUIREMENTS	5
5. KIT CONTENTS	5
STATEMENT OF WARNINGS	5
6. STORAGE CONDITIONS	5
7. REAGENTS REQUIRED BUT NOT INCLUDED	6
PCR AMPLIFICATION	6
ABI FLUORESCENCE DETECTION	6
8. RECOMMENDED POSITIVE CONTROLS	6
9. PROCEDURE NOTES	6
10. REAGENT PREPARATION	6
11. SAMPLE PREPARATION	7
12. AMPLIFICATION	7
13. DETECTION	8
AVAILABLE TEMPLATE AMPLIFICATION CONTROLS	8
GEL DETECTION – AGAROSE TBE GELS	8
GEL DETECTION – POLYACRYLAMIDE TBE GELS	8
GEL DETECTION – HETERODUPLEX ANALYSIS (RECOMMEDED)	8
ABI FLUORESCENCE DETECTION WITH ABI 310 & 3100 INSTRUMENTS	9
ABI FLUORESCENCE DETECTION WITH ABI 373 & 377 INSTRUMENTS	9
CY5.0 FLUORESCENCE DETECTION	9
14. INTERPRETATION AND REPORTING	9
EXPECTED SIZE OF AMPLIFIED PRODUCTS	10
SAMPLE INTERPRETATION	11
15. LIMITATIONS OF PROCEDURE	11
16. REFERENCES	11
17. APPENDIX	11
REAGENTS AND SPECIAL SUPPLIES	11
<i>Ficoll Separation</i>	11
<i>Gel Electrophoresis</i>	11
<i>Differential Fluorescence Detection</i>	12
18. TROUBLE SHOOTING GUIDE	12
19. SAMPLE DATA	12
GEL DETECTION	12
20. SINGLE PAGE FLOW CHART	14
GEL DETECTION – HETERODUPLEX ANALYSIS	14
ABI FLUORESCENCE DETECTION WITH ABI 310 & 3100 INSTRUMENTS	14
CY5.0 FLUORESCENCE DETECTION	14

Thank you for purchasing our **TCRG Gene Clonality Assay**. We appreciate your business. We are happy to assist you in the validation of this assay, and will provide ongoing technical assistance to keep the assays performing efficiently in your laboratory. Technical assistance is most rapidly obtained using our Internet site: <http://www.invivoscribe.com> or by sending an email inquiry to: support@invivoscribe.com. Questions received during business hours usually receive a response within an hour. Alternatively, you can call for technical assistance and for information on our testing kits at (858) 623-8105 between the hours of 8:00 AM and 5:00 PM Pacific Standard Time.

1. Notice

This product and the methods employed are covered by United States Letters Patent Numbered 5,296,351 and 5,418,134; Australian Patent Number 626,601 and Japanese Patent Number 2,781,438, all of which are licensed exclusively to InVivoScribe Technologies (“IVS”).

Purchase of this product includes a limited sublicense for non-commercial practice of this technology for use within (or with respect to data or product that are transmitted to) the United States, Japan or Australia only when the purchaser is registered with IVS as an exclusively non-commercial user of IVS products. *No sublicense is granted simply by purchase of these products.* Non-commercial practice of the technology means sample testing done for teaching and basic research. Non-Commercial practice excludes testing if any of the following apply:

- (a) test results, products or information derived from the tests are used for or in support of patient care, or are transferred to a healthcare professional involved in patient care;
- (b) test results are clinically utilized to determine cause of death;
- (c) compensation, in any form or manner, is received for performing the tests.

To request a form for registration as an exclusively non-commercial product user, to discuss terms for a potential sublicense for broader practice of these methods, or for any questions concerning the scope or content of the non-commercial sublicense please contact our legal department by email at legal@invivoscribe.com, or by telephone at (858) 623-8105.

These methods also require nucleic acid amplification methods such as Polymerase Chain Reaction (PCR), which is covered by patents owned by Hoffmann-LaRoche, Inc. and F. Hoffmann-LaRoche Ltd. No license under these patents to use the PCR process is conveyed expressly or by implication to the purchaser by the purchase of these products. The assays described herein are not approved by any regulatory agency for clinical use. These assays are not for diagnostic or therapeutic use. This product is sold **FOR RESEARCH USE ONLY; not for use in diagnostic procedures.**

2. Principle

NOTICE: *InVivoScribe* Technologies’ Gene Rearrangement and Translocation Assays represent a new approach to PCR-based clonality testing. These standardized assays were carefully optimized testing positive and negative control samples using multiplex master mixes. Assay development was followed by extensive validation testing more than 400 clinical samples using Revised European/American Lymphoma (REAL) Classification. Testing was done at more than thirty prominent independent testing centers throughout Europe in a collaborative study known as the BIOMED-2 Concerted Action. Results from this BIOMED-2 study appear in a leading peer-reviewed journal, *Leukemia*. 2003 Dec; 17(12):2257-2317 (Nature Publishing Group).

BACKGROUND:

The human TCR gamma gene locus on chromosome 7 (7q14) includes 14 V genes belonging to 4 subgroups (6 are functional; 3 Open Reading Frames and 5 pseudogenes), 5 J segments, and 2 C genes spread over 200 kilobases. The diversity of this locus has complicated PCR-based testing, and extended dependence on Southern blot analysis in many testing centers. However, this standardized multiplex PCR assay detects the vast majority of clonal TCR gamma gene rearrangements using only 2 multiplex master mixes. The assay

provides rapid TCR clonality assessment in 4-6 hours, reducing the number of Southern blot tests performed in the laboratory. The detection rate of clonal TCR gamma gene rearrangements using this assay is unprecedentedly high. The performance characteristics of this assay have been independently determined by a European collaborative study involving 32 diagnostic PCR laboratories (BIOMED-2 Concerted Action) testing hundreds of clinical samples defined according to the WHO classification.

Two multiplex master mixes target conserved regions within the variable (V) and the joining (J) regions that flank the unique hypervariable antigen-binding region 3 (CDR3). Tube A contains primers that target the V gamma 1-8 + V gamma 10 genes and all J gamma exon segments. Tube B contains primers that target the V gamma 9 + V gamma 11 genes and all J gamma exon segments. Positive and negative DNA controls, as well as an internal Specimen Control Size Ladder master mix are included. PCR products can be analyzed by differential fluorescence detection using capillary electrophoresis or gene sequencing instruments, by heteroduplex analysis, or using standard gel electrophoresis with ethidium staining. Clonality is indicated if any one of the master mixes generates clonal band(s).

Gel electrophoresis is commonly used to resolve the different-sized amplicon products and ethidium bromide or other DNA intercalating dyes to stain and detect these products. A powerful alternative method is use of differential fluorescence detection with primers conjugated with fluorescent dyes that correspond to different targeted regions. Reaction products from several different master mixes can be pooled, fractionated using capillary electrophoresis, and detected simultaneously. This detection system results in unsurpassed sensitivity, single base resolution, differential product detection and quantification. In addition, the laboratory can eliminate the use of agarose and polyacrylamide gels, as well as the use of carcinogens such as ethidium bromide. Further, differential detection allows accurate, reproducible and objective interpretation of primer-specific products and automatic archiving of data. The limit of detection of this assay has been determined to be approximately 1 clonal cell in 100 hundred normal cells, and inter-assay and intra-assay reproducibility in size determination using capillary electrophoresis is approximately 1-2 basepairs. This reproducibility and sensitivity allows monitoring and tracking of individual tumors during research or methods development. The automatic archiving of specimen data allows comparison of data collected at different times.

This test kit includes 3 master mixes. Tubes A and B target framework regions within the variable region, and the joining region of the TCR gamma chain locus. The last master mix, the Specimen Control Size Ladder, targets multiple genes and generates a series of amplicons of 100, 200, 300, 400, and 600 base pairs to ensure that the quality and quantity of input DNA is adequate to yield a valid result. A single thermocycler program and similar detection methodologies are used with all of the BIOMED tests. Many of our customers have remarked that this improves consistency and facilitates cross-training on a broad range of different assays. These robust *InVivoScribe* assays can be used to test DNA extracted from virtually any source.

3. Assay Uses

T Cell Receptor Gamma Chain Gene Rearrangement Assays are useful for:

- Identifying clonal T-cell populations highly suggestive of T-cell malignancies
- Lineage determination of leukemias and lymphomas
- Monitoring and evaluation of disease recurrence
- Detection and assessment of residual disease
- Evaluation of new research and methods in malignancy studies

4. Specimen Requirements

- This assay tests genomic DNA

1. 5cc of peripheral blood, bone marrow biopsy, or bone marrow aspirate anti-coagulated with heparin or EDTA. Ship at ambient temperature; OR
2. Minimum 5mm cube of tissue shipped frozen; or at room temperature or on ice in RPMI 1640; OR
3. 2µg of genomic DNA; OR
4. Formalin-fixed paraffin embedded tissue or slides.

5. Kit Contents

Controls and Standards	IVS Catalog #	Concentration
IVS-0009 Clonal Control DNA	4-088-0490	100µl @ 200µg/ml
IVS-0021 Clonal Control DNA	4-088-1210	100µl @ 200µg/ml
IVS-0000 Polyclonal Control DNA	4-092-0010	100µl @ 200µg/ml

Master Mixes	IVS Catalog #	Target
TCRG Tube A	2-207-003X	Vg1-8 + Vg10 + Jg Regions
TCRG Tube B	2-207-004X	Vg9 + Vg11 + Jg Regions
Specimen Control Size Ladder	2-096-002X	Multiple Genes

Note: X = Detection format code

Note: MegaKits contain 10 units of each master mix and 5 units of each Controls and Standards

STATEMENT OF WARNINGS

The assay kit has been optimized to be used as a system. Do not substitute other manufacturer's reagents. Dilution, reducing amplification reaction volumes, or other deviation in this protocol may affect the performance of this test and/or nullify any limited sublicense that comes with the purchase of this testing kit. Close adherence to the protocol will assure optimal performance and reproducibility. It is recommended that glass distilled de-ionized molecular biology grade water be used with the preparation of specimen DNA. This can be purchased from several manufacturers. In addition, laboratory personnel are reminded to wear appropriate personal protective equipment and follow good laboratory practices and universal precautions when working with specimens. Specimens should be handled in approved biological safety containment facilities and opened only in certified biological safety cabinets. Please see Section 9 for further details.

6. Storage Conditions

PCR master mixes are sensitive to freeze/thaw cycles. Therefore, for any duration other than immediate use, our **master mixes and assay kits should be stored at -65°C to -85°C.**

The reason for this is quite straightforward: Due to the high salt concentrations in our master mixes, the effective freezing and thawing temperature of the master mixes is approximately -10°C. The temperature in a standard laboratory -20°C freezer can easily reach -10°C or warmer during the day when these freezers are opened on a regular basis. At these temperatures, PCR master mixes may go through multiple freeze/thaw cycles, resulting in precipitation of the primers. Accordingly, to minimize the exposure of your master mixes to freeze/thaw cycles, **IVS recommends that master mixes be stored at -65°C to -85°C.**

Please note that our DNA standards are best stored at 2°C to 8°C. However, these standards can be stored at any lower temperature as long as they are vortexed after thawing and before use to ensure that they are re-suspended completely.

If you have any questions, please contact our technical staff. We are happy to help you determine your optimal storage needs.

7. Reagents Required But Not Included

PCR Amplification

AmpliTaq Gold DNA Polymerase (**RECOMMENDED**)

(Applied Biosystems, Cat# N808-0241)

AmpliTaq DNA Polymerase

(Applied Biosystems, Cat# N808-0161)

ABI Fluorescence Detection

HI-DI Formamide with ROX size standards - ABI 310

(IVS, Cat# 6-098-0051)

HI-DI Formamide with ROX size standards - ABI 3100

(IVS, Cat# 6-098-0061)

8. Recommended Positive Controls

Master Mix	Target	Color	Control DNA	Cat#	Product Size in Basepairs
TCRG Tube A	Vg1-8, Vg10 + Jg 1.3/2.3	Green	Valid Size Range	---	145-255
			IVS-0021 Clonal Control DNA	4-088-1210	211
TCRG Tube B	Vg9 and Vg11 + Jg 1.3/2.3	Green	Valid Size Rang	---	80-220
			IVS-0021 Clonal Control DNA	4-088-1210	167
Specimen Control Size Ladder	Multiple Genes	Blue	Valid Size Range	---	84, 96, 200, 300, 400, 600
			IVS-0000 Polyclonal Control DNA	4-092-0010	84, 96, 200, 300, 400, 600

Note: The amplicon sizes listed above were determined using an ABI 3100 platform. Amplicon sizes seen on your specific CE instrument may differ 1-4bp from those listed above depending on the platform of detection (ABI) and the version of the analysis software used. Once identified, the amplicon size as determined on your specific platform will be consistent from run to run. This reproducibility is extremely useful when tracking MRD.

9. Procedure Notes

- Autoclaving does not eliminate DNA contamination.
 - Work flow in the PCR laboratory should always be in a one way direction between separate work areas; beginning in Master Mix Preparation, moving to the Specimen Preparation, then to the Amplification, and finally to Detection.
1. Do not bring amplified DNA into the areas designated for master mix or specimen preparation.
 2. Due to the analytical sensitivity of this test, extreme care should be taken to avoid the contamination of reagents or amplification mixtures with samples, controls or amplified materials. All reagents should be closely monitored for signs of contamination (e.g., negative controls giving positive signals). Discard reagents suspected of contamination.
 3. All pipettes, pipet tips, and any equipment used in a particular area should be dedicated to and kept to that area of the laboratory.
 4. PCR trays, bases, and retainers must to be decontaminated in 10% bleach and rinsed with distilled water two separate times before returning them to the starting areas.
 5. Sterile, disposable plastic ware should be used whenever possible to avoid RNase or cross-contamination.

10. Reagent Preparation

- All unknown samples should be tested using the template amplification control (**Amplification Control or Specimen Control Size ladder**) master mix. This is to ensure that no inhibitors of amplification are present, and there is DNA of sufficient quality and quantity to generate a valid result.
- All samples should be tested in **singlicate**.
- **Positive, negative and no template** controls should be tested for each of the master mixes.

1. Using gloved hands, remove the master mixes from the freezer. Allow the tubes to thaw; then gently vortex to mix.
2. In containment hood or dead air box remove an appropriate aliquot to clean, sterile microfuge tube (one tube for each of the master mixes). Aliquot volumes should be 45µl for each sample + 135µl (3 x 45µl) for the positive, negative and no template controls. We recommend adding an additional 20µl to correct for pipetting errors.
3. Add the appropriate amount of either AmpliTaq Gold or AmpliTaq DNA polymerase (0.25µl of either AmpliTaq Gold or AmpliTaq @ 5U/µl per 50µl total PCR reaction volume) to each of the master mixes and gently mix by inverting several times or gently vortexing.

The master mixes are now ready for distribution to reaction tubes or plate, and addition of sample.

11. Sample Preparation

Using any method of DNA extraction, extract the genomic DNA from unknown samples. Resuspend DNA to final concentration of 100µg - 400µg per ml in TE (10 mM Tris-HCl, 1mM EDTA, pH 8.0) or distilled water. This is a robust assay system. A wide range of DNA concentrations will generate a valid result. Therefore, quantifying and adjusting DNA concentrations is generally not necessary. Testing sample DNAs with the Amplification Control or Specimen Control Size Ladder master mix will ensure that DNA of sufficient quality and quantity was present to yield a valid result.

12. Amplification

1. Aliquot 45µl of the master mix/enzyme solutions into individual PCR wells or tubes.
2. Add 5µl of sample or control DNA to the individual tubes or wells containing the respective master mix reactions. Pipette up and down several times to mix. Amplify the reactions using the following PCR program

We recommend the MJ Research PTC-100, PTC-200 or the PE 2600, 9600, or 9700 thermocyclers, using the following PCR parameters for the amplifications:

Note: We recommend using the **calculated** option for temperature measurement with the PTC instruments.

Standard Program for AmpliTaq Gold

- Step 1: 95°C for 7 minutes
- Step 2: 95°C for 45 seconds
- Step 3: 60°C for 45 seconds
- Step 4: 72°C for 90 seconds
- Step 5: Go to step 2; 34 more times
- Step 6: 72°C for 10 minutes
- Step 7: 15°C forever

Remove the amplification plate from the thermocycler

13. Detection

- **Not all detection formats are available for all assays**

Available Template Amplification Controls

- The **Amplification Control** master mix primers are labeled with a fluorescent dye (6-FAM or Cy5.0). This label is detected as **BLUE** using the differential fluorescence software. The amplicons produced with this master mix are at 235 basepairs. The products of this master mix should be run separately.
- The **Specimen Control Size Ladder** master mix primers are labeled with a fluorescent dye (6-FAM or Cy5.0). This label is detected as **BLUE** using the differential fluorescence software. The amplicons produced with this master mix are at ~100, 200, 300, 400, and 600 basepairs. Please note that the ~100bp band is comprised of a 84bp and 96bp bands. Both of these bands co-migrate on a gel. The products of this master mix should be run separately.

Gel Detection – Agarose TBE Gels

1. A 2% MetaPhor or NuSieve 3:1 agarose/TBE gel is prepared.
2. 20µl from each of the amplification reactions are individually mixed with 4µl of 6X gel loading buffer. 20µl of this mixture is loaded into separate wells of the gel, flanked by DNA size standards. Products are detected using ethidium bromide or an equivalent dye.
3. Gel is photographed and data are interpreted.

Gel Detection – Polyacrylamide TBE Gels

1. Assemble electrophoresis unit using a 6% non-denaturing polyacrylamide TBE gel (made with 1X TBE, Invitrogen Cat# EC62652Box) and 0.5X TBE running buffer (Invitrogen 5X TBE Cat# LC6675).
2. Add 5µl of ice-cold non-denaturing bromophenol blue loading buffer to samples.
3. Load 20µl of mixture into wells of the gel.
4. Run gel at 110V for 2-3 hours or 40-50V overnight. Voltage and electrophoresis time depend on the PCR amplicon size, acrylamide gel thickness, and type of PCR equipment. Voltage and run time can be adapted accordingly.
5. Gels are stained in 0.5µg/ml EtBr (in water or 0.5X TBE Buffer) for 5-10 minutes.
6. Gels are destained 2X in water for 5-10 minutes.
7. UV illumination is used for visualization.
8. Gel is photographed and data are interpreted.

Gel Detection – Heteroduplex Analysis (RECOMMENDED)

1. Denature 20µl of PCR products at 94°C for 5 minutes.
2. Re-anneal PCR products at 4°C for 60 minutes.
3. Assemble electrophoresis unit using a 6% non-denaturing polyacrylamide TBE gel (made with 1X TBE, Invitrogen Cat# EC62652Box) and 0.5X TBE running buffer (Invitrogen 5X TBE Cat# LC6675).
4. Add 5µl of ice-cold non-denaturing bromophenol blue loading buffer to samples
5. Load 20µl of mixture into wells of the gel.
6. Run gel at 110V for 2-3 hours or 40-50V overnight. Voltage and electrophoresis time depend on the PCR amplicon size, acrylamide gel thickness, and type of PCR equipment. Voltage and run time can be adapted accordingly.
7. Gels are stained in 0.5µg/ml EtBr (in water or 0.5X TBE Buffer) for 5-10 minutes.
8. Gels are destained 2X in water for 5-10 minutes.
9. UV illumination is used for visualization.
10. Gel is photographed and data are interpreted.

ABI Fluorescence Detection with ABI 310 & 3100 instruments

1. Add 1µl of reaction products from the TCRG Tube A in a separate tube and add 10µl of HI-Deionized Formamide containing ROX size standards to the tube. Mix well.
2. Add 1µl of reaction products from the TCRG Tube B in a separate tube and add 10µl of HI-Deionized Formamide containing ROX size standards to the tube. Mix well.
3. Add 1µl of reaction product from the template amplification control in a tube and add 10µl of HI-Deionized Formamide containing ROX size standards. Mix well.
4. Reaction products are heated to 95°C for 2 minutes then snap chilled on ice for 5 minutes.
5. A **sample sheet** and **injection list** is made up for the samples. As the samples are run on the machine, they are fractionated, detected and analyzed by the instrument. Runs are 20-24 minutes in duration. The 310 & 3100 capillary electrophoresis instruments routinely handle 2 runs per hour (48 and 768 samples per day, respectively), and automatically analyze and store data for review or comparison with other test results.
6. Data are automatically displayed as size and color specific peaks. Review profile and controls, report results.

ABI Fluorescence Detection with ABI 373 & 377 instruments

1. PCR Product Dilution: Initially dilute samples 1:10 in HI-Deionized Formamide or water (can be altered if the fluorescence signal is outside the optimal range).
2. Add 2µl of diluted reaction product from the TCRG Tube A in a tube + 2µl of HI-Deionized Formamide containing + 0.5µl of ROX size standards + 0.5µl of blue Dextran loading dye. Mix well.
3. Add 2µl of diluted reaction product from the TCRG Tube B in a tube + 2µl of HI-Deionized Formamide containing + 0.5µl of ROX size standards + 0.5µl of blue Dextran loading dye. Mix well.
4. Add 2µl of diluted reaction product from the template amplification control in a tube + 2µl of HI-Deionized Formamide containing + 0.5µl of ROX size standards + 0.5µl of blue Dextran loading dye. Mix well.
5. Reaction products are heated to 94°C for 2 minutes then snap chilled on ice for 5 minutes.
6. Load the 5µl of each of these preparations in separate wells of a preheated gel and run using the standard sequencing protocol.

Cy5.0 Fluorescence Detection

- The Cy5.0 fluorochrome is capable of being detected by many different detection platforms. Please see your instruments user manual for instructions on the fractionation and detection of your samples.

14. Interpretation and Reporting

Note: This assay is for research use only. Although positive results are highly suggestive of malignancy, these assays are designed for Research Use Only and, if used in a clinical setting, should only be used in support of diagnosis. Positive and negative results should be interpreted in the context of all clinical information and laboratory test results. PCR based testing does not identify 100% of clonal cell populations; therefore, repeat testing by Southern blot may be advisable to rule out clonality.

The size range for each of the master mixes has been determined testing positive control samples. For accurate and meaningful interpretation it is important to ignore peaks that occur outside of the proscribed/valid size range for each of the master mixes. Peaks that are outside of the range cannot be assumed to be valid.

Note: “Color” indicates the color of products generated with the master mix when using differential fluorescence detection format (e.g., ABI instruments).

Expected Size of Amplified Products

Master Mix	Target	Color	Control DNA	Cat#	Product Size in basepairs
TCRG Tube A	Vg1-8 + Jg 1.1/2.1	Blue	Valid Size Range IVS-0000 Polyclonal Control DNA	---	145-255 230-255
	Vg1-8 + Jg 1.3/2.3	Green	IVS-0000 Polyclonal Control DNA	4-092-0010	195-230
	Vg10 + Jg 1.1/2.1	Blue	IVS-0000 Polyclonal Control DNA	4-092-0010	175-195
	Vg10 + Jg 1.3/2.3	Green	IVS-0000 Polyclonal Control DNA	4-092-0010	145-175
	Vg1-8 + Jg 1.3/2.3	Green	IVS-0009 Clonal Control DNA	4-088-0490	212
	Vg1-8 + Jg 1.3/2.3	Green	IVS-0021 Clonal Control DNA	4-088-1210	211
TCRG Tube B	Vg9 + Jg 1.1/2.1	Blue	Valid Size Range IVS-0000 Polyclonal Control DNA	---	80-220 195-220
	Vg9 + Jg 1.3/2.3	Green	IVS-0000 Polyclonal Control DNA	4-092-0010	160-195 ²
	Vg11 + Jg 1.1/2.1	Blue	IVS-0000 Polyclonal Control DNA	4-092-0010	110-140 ³
	Vg11 + Jg 1.3/2.3	Green	IVS-0000 Polyclonal Control DNA	4-092-0010	80-110 ³
	Vg11 + Jg 1.3/2.3	Green	IVS-0009 Clonal Control DNA	4-088-0490	115 ¹
	Vg9 + Jg 1.3/2.3	Green	IVS-0021 Clonal Control DNA	4-088-1210	143 ⁴ , 167
Specimen Control Ladder	Multiple Genes	Blue	Any Human DNA	---	84, 96, 200, 300, 400, 600

Note: The amplicon sizes listed above were determined using an ABI 3100 platform. Amplicon sizes seen on your specific CE instrument may differ 1-4bp from those listed above depending on the platform of detection (ABI) and the version of the analysis software used. Once identified, the amplicon size as determined on your specific platform will be consistent from run to run. This reproducibility is extremely useful when tracking MRD.

Note¹: This may be seen as a weak amplicon.

Note²: Amplicon product is often not seen in this size range.

Note³: Amplicon product is often not seen. This is an extremely restricted repertoire.

Note⁴: Amplicon product is often not seen in this size range.

Results can be reported as “Positive” or “Negative” for “Detection of T cell receptor gamma chain gene rearrangement consistent with the presence of a clonal cell population”

1. Samples that fail to amplify following repeat testing should be reported as **“A result cannot be reported on this specimen because there was DNA of insufficient quantity or quality for analysis”**.
2. It is acceptable to call a sample **“Positive”** when a product is generated in the valid size range yet the positive control for that master mix fails.
3. Samples that test negative should be repeated if the positive control reaction failed.
4. **All assay controls must be examined prior to interpretation of sample results. If the controls do not yield the correct results, the assay is not valid and the samples should not be interpreted.**

The following describes the analysis of each of the controls, and the decisions necessary based upon the results.

1. **Negative Control:** (Polyclonal control, water or no template blank). If the negative control is:
 - Positive:** Possible contamination of all PCR amplification reactions. Do not continue with the interpretation of results. Prepare fresh master mix and repeat amplification.
 - Negative:** Continue with the analysis.
2. **Positive Control:** (This can also be an extraction control if positive control material is taken through extraction processes). If the positive control is:
 - Positive:** Continue with analysis.
 - Negative:** Repeat assay unless specimen tests positive.

3. **Specimen Control Size Ladder:** (This is run on unknown samples only). If the amplification control is:
- Positive:** ~100, 200, 300, 400, and 600 basepair products are seen. Because smaller PCR fragments are preferentially amplified, it is not unusual for the 600 basepair fragment to have a diminished signal or to be missing entirely. Continue with analysis.
- Negative:** Repeat assay unless specimen tests positive.

Sample Interpretation

Following the acceptance of the controls, the clinical samples are interpreted as follows:

One or two prominent bands within the valid size range are reported as:

“Detection of clonal T cell receptor gamma gene rearrangement consistent with the presence of a clonal cell population.”

15. Limitations of Procedure

The assay is subject to interference by degradation of DNA or inhibition of PCR due to heparin or other agents. The assay cannot reliably detect less than 1 positive cell per 100 normal cells.

16. References

1. Miller, JE, Wilson, SS, Jaye, DJ, Kronenberg, M. An automated semiquantitative B and T cell clonality assay. *Mol. Diag.* 1999, **4(2)**:101-117.
2. van Dongen, JJM *et al.* Design and standardization of PCR primers and protocols for detection of clonal immunoglobulin and T-cell receptor gene recombinations in suspect lymphoproliferations: Report of the BIOMED-2 Concerted Action BMH4-CT98-3936. *Leukemia*. 2003, **17(12)**:2257-2317.
3. van Krieken JH, Langerak AW, Macintyre EA, Kneba M, Hodges E, Sanz RG, Morgan GJ, Parreira A, Molina TJ, Cabeçadas J, Gaulard P, Jasani B, Garcia JF, Ott M, Hannsmann ML, Berger F, Hummel M, Davi F, Brüggemann M, Lavender FL, Schuurin E, Evans PA, White H, Salles G, Groenen PJ, Gameiro P, Pott Ch, van Dongen JJM. Improved reliability of lymphoma diagnostics via PCR-based clonality testing: report of the BIOMED-2 Concerted Action BHM4-CT98-3936. *Leukemia*. 2007; **21(2)**:201-6.

17. Appendix

Reagents and Special Supplies

Ficoll Separation

Ficoll-Hypaque or Ficoll-Paque	(Pharmacia, Cat# 17-0840-02)
1X PBS diluted from 10X PBS	(Gibco/BRL, Cat# 70011-044)
RPMI 1640	(Gibco/BRL, Cat# 11875-093)
DMSO Hybri-Max	(Sigma, Cat# D2650)
Fetal Bovine Serum	(Hyclone, Cat# SH30071.03)

Gel Electrophoresis

MetaPhor Agarose, 125g	(Cambrex, Cat# 50180)
NuSieve 3:1 Agarose, 125g	(Cambrex, Cat# 50090)
UltraPure™ 10 mg/ml Ethidium Bromide	(Invitrogen, Cat# 15585-011)
10X BlueJuice™ Gel Loading Buffer	(Invitrogen, Cat# 10816-015)
Ready-Load™ 100 bp Ladder	(Invitrogen, Cat# 10380-012)
Novex® TBE gels (6%, 12 well)	(Invitrogen, Cat# EC62652Box)
Novex® TBE Running Buffer (5X)	(Invitrogen, Cat# LC6675)
Novex® Hi-Density TBE Sample Buffer (5X)	(Invitrogen, Cat# LC6678)

Differential Fluorescence Detection

HI-DI Formamide with ROX size standards - ABI 310	(IVS,	Cat# 6-098-0051)
HI-DI Formamide with ROX size standards - ABI 3100	(IVS,	Cat# 6-098-0061)
HI-Deionized Formamide	(IVS,	Cat# 6-098-0041)
HI-Deionized Formamide	(Applied Biosystems,	Cat# 4311320)
GS ROX 50-400HD Size Standard	(Applied Biosystems,	Cat# 402985)

18. Trouble Shooting Guide

Our laboratories are located in San Diego, California. Technical assistance is most rapidly obtained using our Internet site: <http://www.invivoscribe.com> or by sending an email inquiry to: support@invivoscribe.com. Alternatively, you can call (858) 623-8105 for technical assistance and information on our testing kits between the hours of 8:00 AM and 5:00 PM Pacific Standard Time. Questions received during business hours usually receive a response within an hour.

19. Sample Data

Gel Detection

The data shown below were generated using the master mixes indicated. Amplified products were heteroduplexed and run on a 6% polyacrylamide gel.

For each TCRG master mix:

- Lane 1 displays data generated testing an alternative 100% clonal control DNA.
- Lane 2 displays data generated testing the recommended 100% clonal control DNA.
- Lane 3 displays data generated testing a 10% dilution of the recommended clonal control DNA.
- Lane 4 displays data generated testing IVS-0000 Polyclonal Control DNA.

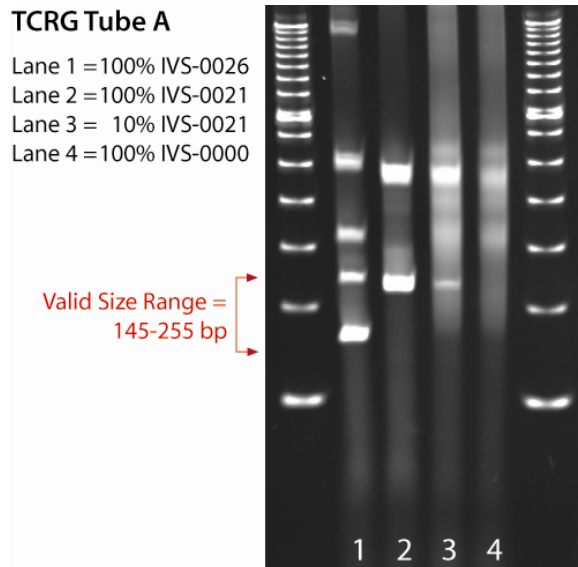


Figure 1

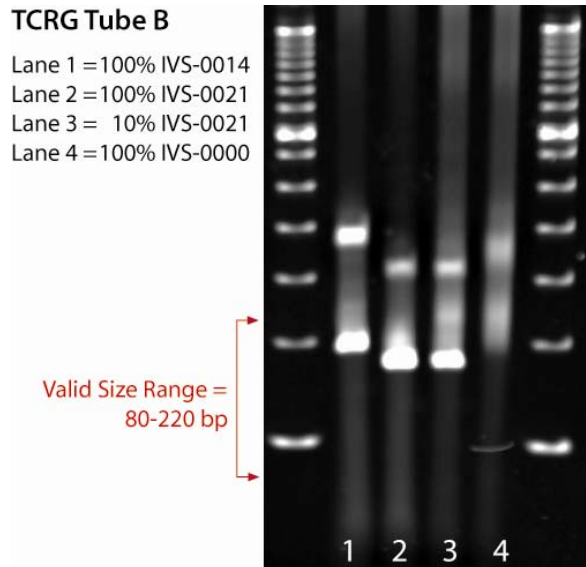


Figure 2

ABI Fluorescence Detection

The data shown below were generated using the master mixes indicated. Amplified products were run on an ABI 3100 instrument.

For each TCRG master mix:

- Panel 1 displays data generated testing an alternative 100% clonal control DNA.
- Panel 2 displays data generated testing the recommended 100% clonal control DNA.
- Panel 3 displays data generated testing a 10% dilution of the recommended clonal control DNA.
- Panel 4 displays data generated testing IVS-0000 Polyclonal Control DNA.

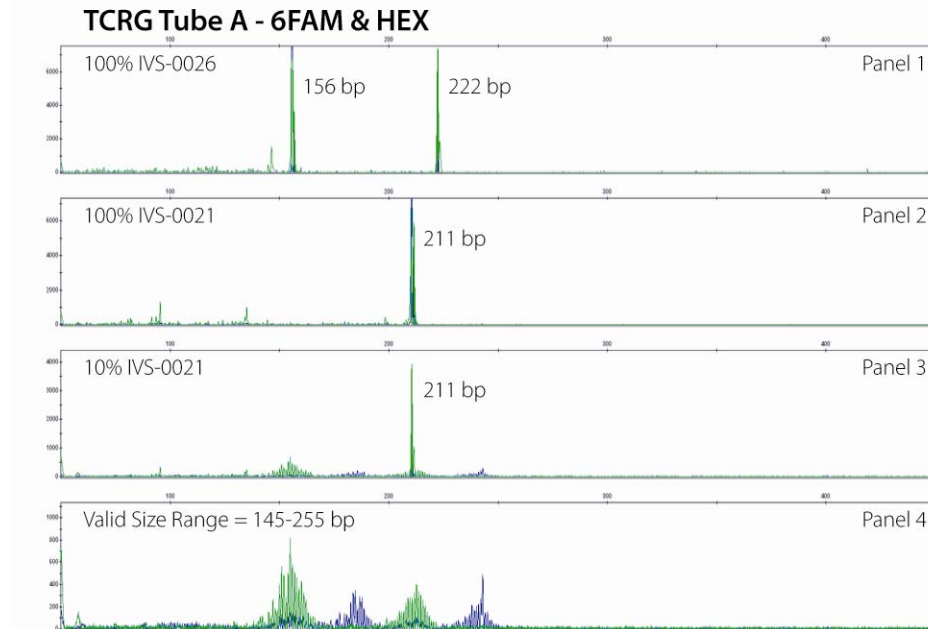


Figure 3

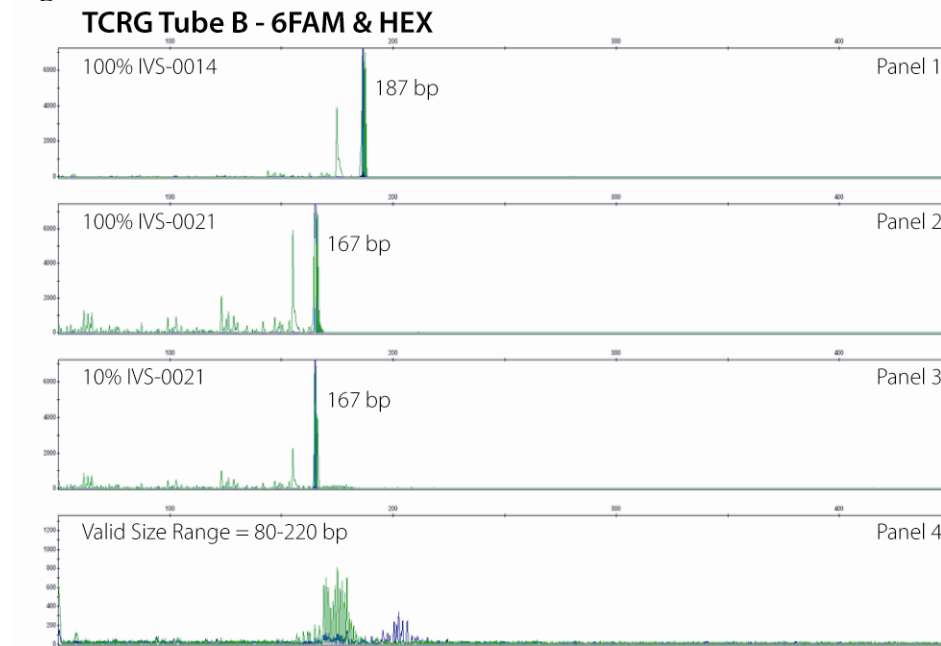


Figure 4

20. Single Page Flow Chart

1. Using gloved hands, remove the master mixes from the freezer. Allow the tubes to thaw; then gently vortex to mix.
2. In a containment hood or dead air box remove an appropriate aliquot to clean, sterile microfuge tube (one tube for each of the master mixes). Aliquot volumes should be 45µl for each sample + 135µl for the positive, negative and no template controls. We recommend adding an additional 20µl to correct for pipetting errors.
3. Add the appropriate amount of either AmpliTaq Gold or AmpliTaq DNA polymerase (0.25µl of either AmpliTaq Gold or AmpliTaq @ 5U/µl per 50µl total PCR reaction volume) to each of the master mixes and gently mix by inverting several times or gently vortexing.
4. Aliquot 45µl of master mix to individual wells of a PCR plate.
5. Add 5µl of DNA from the unknown and control samples to individual tubes or wells containing the respective master mix reactions, and pipette up and down several times to mix. Amplify target DNA using the universal thermocycler program.

Gel Detection – Heteroduplex Analysis

6. Denature 20µl of PCR products at 94°C for 5 minutes.
7. Re-anneal PCR products at 4°C for 60 minutes.
8. Assemble electrophoresis unit using a 6% non-denaturing polyacrylamide TBE gel (made with 1X TBE, Invitrogen Cat# EC62652Box) and 0.5X TBE running buffer (Invitrogen 5X TBE Cat# LC6675).
9. Add 5µl of ice-cold non-denaturing bromophenol blue loading buffer to samples
10. Load 20µl of mixture into wells of the gel.
11. Run gel at 110V for 2-3 hours or 40-50V overnight. Voltage and electrophoresis time depend on the PCR amplicon size, acrylamide gel thickness, and type of PCR equipment. Voltage and run time can be adapted accordingly.
12. Gels are stained in 0.5µg/ml EtBr (in water or 0.5X TBE Buffer) for 5-10 minutes.
13. Gels are destained 2X in water for 5-10 minutes.
14. UV illumination is used for visualization.
15. Gel is photographed and data are interpreted.

ABI Fluorescence Detection with ABI 310 & 3100 instruments

6. Add 1µl of reaction products from the TCRG Tube A in a separate tube and add 10µl of HI-Deionized Formamide containing ROX size standards to the tube. Mix well.
7. Add 1µl of reaction products from the TCRG Tube B in a separate tube and add 10µl of HI-Deionized Formamide containing ROX size standards to the tube. Mix well.
8. Add 1µl of reaction product from the template amplification control in a tube and add 10µl of HI-Deionized Formamide containing ROX size standards. Mix well.
9. Reaction products are heated to 95°C for 2 minutes then snap chilled on ice for 5 minutes.
10. A **sample sheet** and **injection list** is made up for the samples. As the samples are run on the machine, they are fractionated, detected and analyzed by the instrument. Runs are 20-24 minutes in duration. The 310 & 3100 capillary electrophoresis instruments routinely handle 2 runs per hour (48 and 768 samples per day, respectively), and automatically analyze and store data for review or comparison with other test results.
11. Data are automatically displayed as size and color specific peaks. Review profile and controls, report results.

Cy5.0 Fluorescence Detection

- The Cy5.0 fluorochrome is capable of being detected by many different detection platforms. Please see your instruments user manual for instructions on the fractionation and detection of your samples.