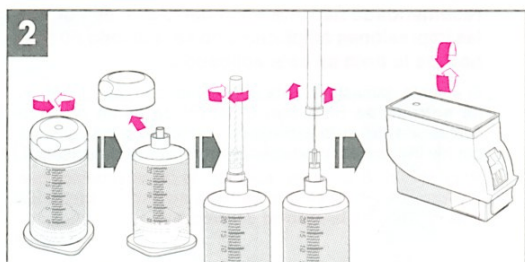
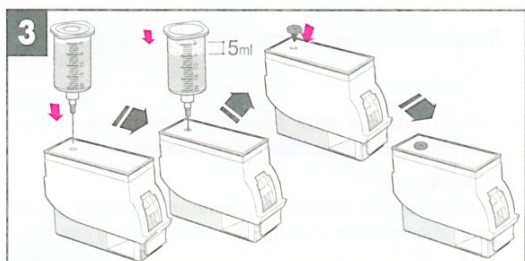


1. Insert the cartridge into the refill clip completely. Place the sponge side of the cartridge first and then press down the opposite side **until you hear it clicking into place**.

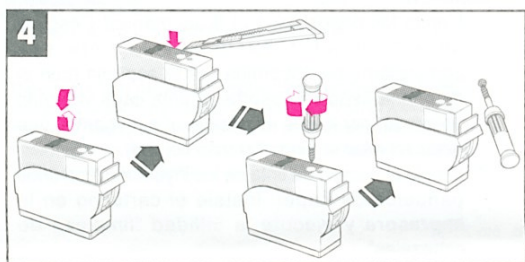


2. Open the cap of the ink container and connect the ink injection needle. As shown in the figure, turn the refill clip upside down **so that the bottom part faces upward**.



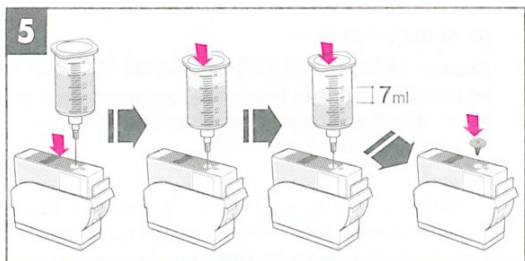
3. Insert the ink injection needle into the hole of the refill clip tank, and inject **5ml of ink**. **Wait 1 to 2 minutes** until the ink is completely absorbed into the sponge inside the cartridge, and then close the hole again **with the supplied rubber plug**.

Warning: If you inject too much ink, it may flow over or leak out.



4. As shown in the figure, turn the refill clip **back to upright position** and with a sharp tool such as a knife, cut out the sticker attached on the top of the cartridge in a round shape. With the supplied gimlet, take out the ball to create an ink injection inlet.

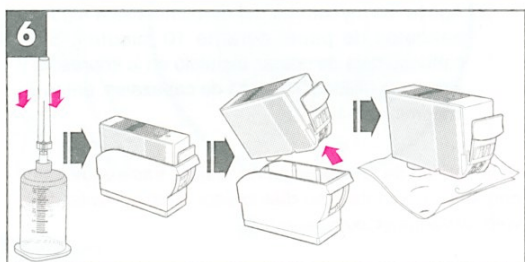
Warning: Take special care not to hurt yourself when you use a sharp tool such as a knife.



5. Slowly inject **7ml** of ink into the ink injection inlet for about **30 seconds**, and then completely close the ink injection inlet **with another rubber plug**.

Warning: The ink volume specified above is for a completely empty cartridge.

Warning: If you inject too much or too quickly, it may flow over or leak out.



6. Remove the cartridge from the refill clip and clean the excessive ink around the nozzle, **dabbing** the nozzle part of the cartridge on some sheets of soft tissue. Then install it in the printer.

Note: If the ink keeps on leaking out of the cartridge nozzles after refilling or the printout quality is not good enough, read the "Emergency measures when problems occur after refilling" at the end of the user manual and take the right step.

7. Change **the printer setup** as below:

Case 1: When the window of "ink is running low" appears:

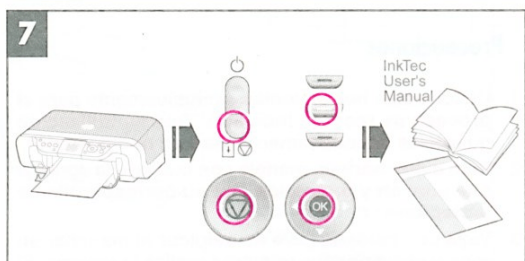
- Click the "OK" or "out of paper" button on your printer
- When the window of "ink has run out" appears, follow the procedures Case 2 below.

Case 2: When the window of "ink has run out" appears:

- Click the "yes" button on the window.
- When the message of "Press and hold the Stop/Reset button...." appears, press and hold the "Stop/Reset" or "out of paper" button on your printer for 10 seconds.

Before using the printer, run the "head cleaning" process.

Warning: The level warning system of the refilled cartridge will be deactivated permanently. Refill the cartridge only when the print quality begins to deteriorate and the cartridge is actually out of ink. If you keep on printing without inks for a long time, the print head will be damaged.



GENERAL INFORMATION FOR SUCCESSFUL REFILLING

1. Appropriate timing and method for refilling

- Please try to refill as soon as the ink is exhausted.

If you keep on printing, even though the ink is already exhausted or neglect the cartridge for a long time, the nozzle will be dried up and the cartridge will not be suitable for refilling.

- When printouts are getting unclear because of the ink exhaustion after normal usage, refill the recommended volume of ink.

If you insert too much ink or fail to close the ink injection hole completely with the rubber plug after refill, too much air may penetrate the sponge inside the cartridge and ink may leak through the nozzle, causing abnormal printing.

For stable recycling/refilling of the cartridge, it is recommended that you refill ink according to the user manual before the ink in sponge is completely exhausted (dried up).

EMERGENCY MEASURES WHEN PROBLEMS OCCUR AFTER REFILLING

- When ink does not come out through the nozzle, or printouts have white lines:

Reason:

Because you have kept on printing with no ink inside the cartridge or ink is not sufficiently supplied into the sponge.

Solution:

- Repeat steps 1 to 3 in the user manual and wait over 2 minutes until ink is fully absorbed into the sponge. (More time may be necessary as the sponge's ink absorption gets slower with repeated refills).

- Clean the excessive ink around nozzles with some sheets of soft tissue. Then install the cartridge in the printer and run the "head cleaning process" before use.

- When ink leaks through the nozzle, and colours are not printed normally:

Reason:

Because you have injected more than the recommended volume of ink or the ink injection inlet is not closed completely with the rubber plug.

Solution:

- Make sure that the ink injection inlet is closed completely with the rubber plug on the top of the cartridge.

- Keep the cartridge on some sheets of dried soft tissue for about 10 minutes. If the leaking stops completely, install it in the printer and run the "head cleaning" process before use.