

Duplicator Controller Functions

User's Manual
—Version: 1.1—

Attention:

Wait over 5 seconds to power on after shutdown to prevent the abnormal operation of the system.

Copyright©2011



Copyright and Trademarks

The information of the products in this manual is subject to change without prior notice and does not represent a commitment on the part of the vendor, who assumes no liability or responsibility for any errors that appear in this manual.

This manual contains materials protected under International Copyright Laws. All rights reserved. No part of this manual may be reproduced, transmitted or transcribed without the expressed written permission of the manufacturer and author of this manual.

This Duplicator Controller is used for copying and editing personal audio and video data. Violating Copy Right is a criminal act. This Duplicator Controller only supports legal backup operation.

Table of Contents

Chapter 1 The Panel	5
Chapter 2 Functions	6
2.1 Copy	7
2.2 Test	7
2.3 Test&Copy	8
2.4 Verify	8
2.5 Compare	8
2.6 Prescan	8
2.7 Disc Info	8
2.8 Select Source	9
2.9 Image	9
2.9.1 Load	9
2.9.2 Delete Image	10
2.9.3 Image Info	10
2.9.4 Compare Image	10
2.9.5 Select Image	11
2.9.6 Image Src Drive	11
2.9.7 ImageFormat Info	12
2.9.8 Edit	12
2.9.9 Format HDD	13
2.9.10 LoadImage Method	13
2.10 Edit Track (for CD only)	14
2.10.1 CD to CD Edit	14
2.10.2 CD to HDD Edit	16
2.10.3 Close Session	17
2.11 LightScribe (Optional)	17
2.11.1 Print	18

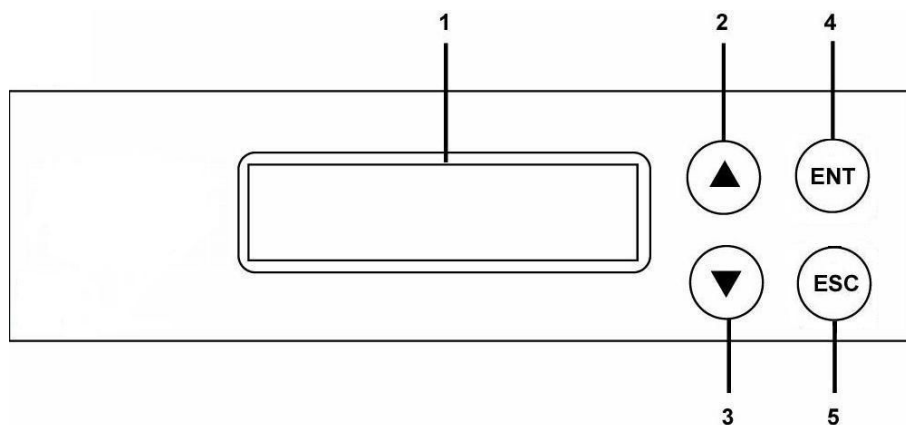
2.11.2 Load LSI to HDD	18
2.11.3 Select LSI File	18
2.11.4 Delete LSI File	18
2.11.5 Load LSI Drive	19
2.11.6 Copyright Info	19
2.12 Setup	20
2.12.1 Language	20
2.12.2 Burn Speed	20
2.12.3 Read Speed	21
2.12.4 Auto Start Drive	21
2.12.5 Startup Menu	22
2.12.6 Auto Verify	22
2.12.7 Auto Compare	22
2.12.8 Auto Prescan	23
2.12.9 Eject Disc	23
2.12.10 Burn On The Fly	23
2.12.11 Burn Mode	24
2.12.12 Display Time	24
2.12.13 Button Sound	24
2.12.14 Device Info	25
2.12.15 System Info	25
2.12.16 Quick Erase	25
2.12.17 Full Erase	25
2.12.18 Auto Close Tray	25
2.12.19 Quick Compare	25
2.12.20 Tray-In/Out	26
2.12.21 BootTime Delay	26
2.12.22 Start Tray Eject	26
2.12.23 Disc Redetect	26

2.12.24 Show Burn Speed	26
Chapter 3 Troubleshooting	27
3.1 About LCD	27
3.2 About Error Messages	27
3.3 About DVD-ROM/DVD Writers	27
3.4 About Buttons	28
3.5 About DVD Writer Not Readable	28
3.6 About High Failure Rate	28
3.7 About Firmware Update	28
Appendix A LCD Messages	29
Appendix B LightScribe Utility Installation	34
Appendix C LightScribe Utility Quick Guide	37

Chapter 1 Basic Instructions

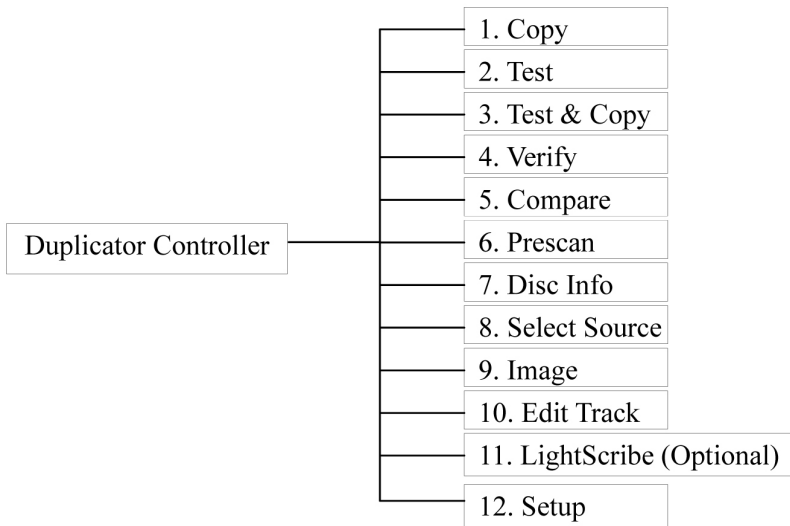
There are four buttons and a LCD on the panel of SATA Copy Standard Version.

1. It shows a function or a message.
2. It's used to scroll up function menus.
3. It's used to scroll down function menus.
4. It's used to execute a function.
5. It's used to cancel a function.



Chapter 2 Functions

There are 11 major functions in the copy controller as the following figure shows, and there are sub-functions in Function 7, 9, 10, 11, and 12 as the following figures show.



Among the 12 functions, Function **10 Edit Track** is designed exclusively for editing a collection of favorite songs from CDs. During operation if you don't understand an LCD message, see Appendix A

2.1 Copy

Function #1 Copy, instant copy source (disc/image) to the target drives (optical writes). Use Function#8 to select source drive before copying.

Select function#1. place a source disc into source drive and blank disc into the target drives. A rewriteable disc can be used as target media, however all data will be erased before copying.

Press ENT to start copy function when all discs are ready .

1. Copy

After complete, system will show spent time and the amount of OK disc on the screen, the OK disc will be ejected.

OK: 01
Time: 00:05:01

2.2 Test

Function #2, copy simulation, no data will be written to the write once media (DVD+R is not supported for this function).

Press ENT to start simulation. If rewriteable disc is used, all contained data will be erased before simulation.

2.3 Test & Copy

Function #3, will do copy simulation before copy function.

Press ENT to start simulation and copy.

Note: only passed test disc will do the copy.

2.4 Verify

Function #4, to check readability of the burned disc.

2.5 Compare

Function #5, to check if target disc is identical to source disc.

Compare result :

OK : Source and target disc are identical

Fail : TOC not match, compare skipped due to contains do not match.

Diff : Shows how many bytes are different.

2.6 Prescan

Function #6, to check if source disc is readable and without read error.

2.7 Disc Info

Function #7, to report disc information, disc type and capacity.

2.8 Select Source

Function #8, to set which drive as source device.

The drive on CH01 will be chosen as source device. Press ENT, and then press ▲ ▼ to select the source.

Assume that HDD is selected as the source device and selected partition contains no data, an error message “Source Drive Not Ready” will show on LCD while trying copy function. In that case, go to Function#9 Image to load the data into the chosen partition first.

2.9 Image

Function #9 Image is valid only when a hard disk is installed. Disc is loaded to hard disk as an image file. Refer to the menu.

9. Image

2.9.1 Load

Load function loads whole disc data from any writers into the current partition of the hard disk. “P:A” means current partition is A.

9-01. Image Load	P:A
---------------------	-----

2.9.2 Delete Image

If you want to delete an image file stored in a particular partition, you can use this function to delete image.

9-02. Image Delete Image	P:A
-----------------------------	-----

Press ENT, the system will confirm with you for the action, use ▲ ▼ to select Yes or No, then press ENT for confirmation.

Delete Image? Yes A: Audio 537MB

2.9.3 Image Info

To check selected image information. First, enter into the function and press ▼ for more information.

9-03. Image Image Info	P:A
---------------------------	-----

2.9.4 Compare Image

This function is used to check if created image is identical to source disc.

9-04. Image Compare Image	P:A
------------------------------	-----


When result shows on LCD, press ENT for more detail information.

Compare result :

OK : Source and target disc are identical

Fail : TOC not match, compare skipped due to contains not match.

Diff : Shows how many bytes are different.



Compare
OK: 1

2.9.5 Select Image

This function is to select a partition as source image from the hard disk.



9-05. Image P:A
Select Image

Pressing ▲ ▼ to select a partition, LCD will show image name and capacity.



Select Partition
A: DATA

2.9.6 Image Src Drive

This function is used to set the image source drive for loading disc data into a particular partition.

9-06. Image Image Src Drive	P:A
--------------------------------	-----

Enter into the function and use ▲ ▼ to select image source drive.

Select Img Src 01 CH01	XXXXX
---------------------------	-------

2.9.7 Image Format Info

This function shows which format is used for current hard disk. It is related to function#12.4 Format HDD. There are 5 formats for choice: F_S,CD, DVD, DL (Double Layer) and AUTO.

9-07. Image ImageFormat Info	P:A
---------------------------------	-----

Press ENT to see the following figure. This figure shows that the hard disk has been formatted as AUTO.

ImageFormat Info AUTO

2.9.8 Edit

This function is to edit selected image's title, sub1 title and sub2 title. Only valid when the current partition contains an image file can title.

9-08. Image Edit	P:A
---------------------	-----

A title should be composed of 1 to 13 characters. The character can be alphabet, number or the combination of both. Use ▲ ▼ to select the number or alphabet. After selecting a desired one, press ENT for next character, the end of key in, press and hold ENT for 2 sec and release for next title.

2.9.9 Format HDD

Hard disk must be formatted by the system for the very first time. Hard disk will be partitioned into the chosen partition format.

9-09. Image Format HDD	P:A
---------------------------	-----

If no hard disk is installed, LCD will show the message as No Valid HDD!

The default is F_S.

All data on the hard drive will be erased after the hard disk format.

After the hard drive is formatted correctly, LCD will show “Format HDD ok!”, Press ENT to verify HDD or press ▼ and choose No return back to menu.

2.9.10 LoadImage Method

This function is to change the way to save Image. There are 2 formats for choice: Auto and Manual. Auto means system auto assign partition

for loaded image. Manual let you to choose which partition to load image to.

9-10. Image LoadImage Method	P:A
---------------------------------	-----

The default is Auto.
Press ENT, and use ▲ ▼ to confirm Auto or Manual.
Then press ENT to save the configuration.

2.10 Edit Track (for CD only)

Function#10 Edit Track is exclusively designed for editing a collection of favorite songs from CDs. In other words, you can collect songs on a number of CDs and merge them into a single CD. There are 3 sub-functions: CD to CD, CD to HDD and Close Session.

2.10.1 CD to CD Edit

To select songs from source CD, and then burn into a blank CD-R/RWs.

10. Edit Track

Enter into 10.-01 function, 1/10 means the number one of the 10 tracks, and 03:55 means the length of track.

10-01. Edit Track
CD to CD Edit

Select Track
1/10 03:55

You can press ▼ to see the rest of tracks. If you want to select the track, press ENT then a “+” will shows up, press ENT again will cancel the selection.

Select Track
End 5Trk15:55

After selection, use ▲ ▼ move to the “End” which is between 1st track and last track.

Press ENT to end of selection, and use ▲ ▼ to confirm Yes or No.

Press ENT after burning, system will ask if you want to continue edit, use ▲ ▼ to confirm Yes or No.

If you want to continue edit, the current source CD will be ejected and ask you to insert next disc.

Repeat the above process for editing.

Insert next disc

After editing, system will show “Close all disc’s session ? Yes”, use ▲ ▼ to confirm Yes or No.

Close all disc's
Session? Yes

Once session is closed, no more tracks can be added.

Attention: Commercial audio player might not be able to play open session disc, close session is suggested for max. compatibility.

2.10.2 CD to HDD Edit

To select tracks from single or multi-audio CD and create image to specific partition of HDD.

10-02. Edit Track
CD to HDD Edit

The basic operation method is same as CD to CD Edit, system still ask you to insert empty disc even the target drive is HDD. If burning successful, system will show “Image load OK”, which means the selected tracks are written to temporary partition.

Press ENT after burning, system will ask if you want to continue edit, use ▲ ▼ to confirm Yes or No.

If you want to continue edit, the current source CD will be ejected and ask you to insert next disc.

Repeat the above process for editing.

If “No” is selected, system will show “Burn or Move to partition?”, use ▲ ▼ to confirm Burn or Move.

Burn : Burn the selected tracks to CD

Move to partition : Create an image for selected tracks.

Moving to P:
B

2.10.3 Close Session

Single session format is used for Audio CD, and commercial audio player is not able to play open session audio CD, therefore session must be closed to max. playback compatibility. However, no more tracks can be added once session is closed

10-03. Edit Track
Close Session

2.11 LightScribe (Optional Function)

LightScribe is an optical disc recording technology that uses specially coated recordable CD and DVD media to produce laser-etched labels with text or graphics, as opposed to stick-on labels and printable discs. This function includes 6 sub-functions: Print, Load LSI to HDD, Select LSI File, Delete LSI File, Load LSI Drive and Copyright Info. Refer to page 11 for the menu. See Appendix B and Appendix C for LightScribe utility installation & user guide.

11. LightScribe

2.11.1 Print

Use optical drive's laser to print loaded LSI file. **Disc should be placed upside down** (label side facing down).

11-01. LightScribe
Print

2.11.2 Load LSI to HDD

Load LSI to hard disk.

11-02. LightScribe
Load LSI to HDD

2.11.3 Select LSI File

Select LSI file from hard disk for laser printing.

11-03. LightScribe
Select LSI File

2.11.4 Delete LSI File

Delete a LSI File stored in a particular partition.

11-04. LightScribe
Delete LSI File

Press ENT, and LCD will show the information of the image file.

All daa will be
lost delete? Yes

Use ▲ ▼ to confirm Yes or No.

2.11.5 Load LSI Drive

This function is to select source drive in order to load LSI File into a particular partition.

11-05. LightScribe
Load LSI Drive

Use ▲ ▼ to select source drive.

Select Load Src:
01 CH01 XXXX

2.11.6 Coypright Info

This function is to see the LightScribe copyright information.

11-06. LightScribe
Copyright Info

2.12 Setup


To change the default setting. However, it is suggested to use the default for the optimal operation. There are 24 sub-functions: Language, Burn Speed, Read Speed, Auto Start Drive, Startup Menu, Auto Verify, Auto Compare, Auto Prescan, Eject Disc, Burn On The Fly, Burn Mode, Display Time, Button Sound, Device Info, System Info, Quick Erase, Full Erase, Auto Close Tray, Quick Compare, Tray-In/Out, BootTime Delay, Start Tray Eject, Disc Redetect and Show Burn Speed.



12. Setup

2.12.1 Language

Now press ENT, and you will enter the following figure. The function Language lets you select a language in which messages can be shown on LCD.



12-01. Setup
Language

Press ENT. The default is English. Spanish, Japanese, Traditional Chinese and Simplified Chinese are made to order.

2.12.2 Burn Speed

Now press ESC and ▼ to enter the following figure. This function lets you control the burning speed of CD writers.

12-02. Setup
Burn Speed

Press ENT. The DVD Burn Speed will be shown and the default is **8X**. Press ▼ for change the selection. The next one is BD Burn Speed and the default setting is **2X**. Press ▼ to change the selection to CD Burn speed and the default setting is **24X**. Press ▼ for change to Audio Burn Speed the selection and the default is **24X**.

2.12.3 Read Speed

To change default reading speed of source disc.

12-03. Setup
Read Speed

The default is **8X**, the speed would depend on the reader drive's read speed and media type and format.

2.12.4 Auto Start Drive

System will Auto Start to Copy or Test once a blank disc is ready. You have the option to choose 1 or 2 target blank disc(s) that will enable the Auto Start feature.

The default is Off. Press ▼ to select 1 or 2 (blank disc(s)).

12-04. Setup
Auto Start Drive

2.12.5 Startup Menu

To select any function from #1 to # 13 as the first item appears on the screen whenever system is turned on.

12-05. Setup
Startup Menu

The default is “1. Copy”.

2.12.6 Auto Verify

To set if auto verify target disc’s readability after copy function.

12-06. Setup
Auto Verify

Press ENT. The default is Off. Press ▼ to select On.

2.12.7 Auto Compare

To set if auto do comparison after copy function to check if source and target disc are identical.

12-07. Setup
Auto Compare

The default is Off. Press ▼ to select On.

2.12.8 Auto Prescan

To set auto scan source disc before copy function.

12-08. Setup
Auto Prescan

The default is Off. Press ▼ to select On.

2.12.9 Eject Disc

There are 3 kinds of tray behavior when copy process is completed.

Eject Good Only: Only good disc will be ejected after burning.

Eject All Disc: All discs will be ejected after burning.

Do Not Eject: All discs stay in after burning.

The default is “Eject Good Only”.

12-09. Setup
Eject Disc

2.12.10 Burn On The Fly

“Burn On The Fly” means data will be copied directly from the source disc to the target disc. When the setting is Off, the data will be loaded into temporary partition of HDD first, then copy from HDD to disc.

12-10. Setup
Burn On The Fly

The default is On. Press ▼ to select Off.

2.12.11 Burn Mode

There are two modes: DAO (Disc At Once) and TAO (Track At Once).

12-11. Setup
Burn Mode

The default is DAO. Press ▼ to select TAO.

2.12.12 Display Time

To set if display a timer while copying.

12-12. Setup
Display Time

The default is Off. Press ▼ to select On.

2.12.13 Button Sound

To enable or disable beep sound while press a key.

The default is On. Press ▼ to select Off.

2.12.14 Device Info

To show all device information (**required during the process of LightScribe installation**)

(Press ▼ to select Burner, then press ENT. Your writer model information will appear on a screen.)

2.12.15 System Info

To show system Information.

2.12.16 Quick Erase

To erase data on the DVD rewriteable discs quickly.

2.12.17 Full Erase

To erase data on the DVD rewriteable discs completely. Compared with Quick Erase, Full Erase takes longer time to do the job.

2.12.18 Auto Close Tray

All tray will be closed in selected time and if disc is ready, system will auto start copy, test or both functions, depends on which function is stay on the LCD screen.

2.12.19 Quick Compare

Quick Compare is related to function#5 Compare. Once compare error byte reach to the setting figures, compare process will stop.

The default is Off, press ▼ to select 1 Byte, 1 KB, 10 KB, 100KB, 1 MB, 10MB, 100MB etc.

2.12.20 Tray-In/Out

Lets you control the drive tray ejecting.

Press ENT. The default is All Once and there have Divide 2 Times for selection.

2.12.21 BootTime Delay

To set the device scanning time during the system booting.

The default is 5 second, more option is up to 99 seconds.

2.12.22 Start Tray Eject

To set if do eject all tray after system boot up.

The default is On. Press ▼ to select Off.

2.12.23 Disc Redetect

The function is designed specially for bad quality disc, the system will detect the disc one more time if disc recognition error occurred. The default is Off. Press ▼ to select On.

2.12.24 Show Burn Speed

Now press ESC and ▼ to enter the following figure. This function lets LCD shows the burning speed of CD/DVD/BD writers.

The default is On. Press ▼ to select Off.

Chapter 3 Troubleshooting

3.1 About LCD

After you power up, if there is no display on the LCD, check if the connection of power cord is firm and the environment of power outlet is normal.

3.2 About Error Messages

During Copy, Test, Compare and Verify, etc. if you press ESC to abort, an error message will appear on LCD. Abortion may cause the copy controller to hang up, therefore you have to power on again.

If reading fails, an error message will appear on LCD. Get a new source DVD to try again.

If the copy controller hasn't detected any device after powering on, an error message will appear on LCD.

3.3 About DVD-ROM/DVD Writers

If a DVD-ROM or a DVD writer cannot read, confirm the format of the source DVD and check if it is damaged.

Use any DVD writer to read the source DVD. If it works, the DVD-ROM is probably defective or not compatible with the source DVD.

3.4 About Buttons

If you press any one of the four buttons on the panel, but there is no response, it is perhaps that the button cannot function well. Inspect the jumper setting.

3.5 About DVD Writer Not Readable

After copying if the DVD writer is not readable, use Compare to examine, or get another DVD-ROM to test.

3.6 About High Failure Rate

If the failure rate of data copying is pretty high, please following the following procedures to improve it.

1. Lower the speed of DVD writer.
2. Inspect if the blank disc's quality is good.
3. Update the firmware.
4. Inspect the DVD writer's maximum writing speed. If the speed is over 8X, copy the data to a hard disk first, and then transmit to DVD.

3.7 About Firmware Update

If you cannot update the firmware, please inspect the firmware. Perhaps you have downloaded a wrong file.

Failure in firmware update may cause the copy controller to fail in booting. Under the circumstances, return the control board to distributor for repair.

Appendix A – LCD Messages

1. Normal Conditions:	
All data will be lost, erase?	All data on the disc will be lost. Confirm the erasing of data.
Analyzng:	Analyze the source disc.
Audio Disc!!! Can't compare!	The system cannot compare the audio discs.
Cannot read TOC	The system cannot read the contents of disc.
Check Target Please Wait	The system is checking the target device.
Detect Drives	Detect what drives are connected with the system.
DVD-RW does not Support the Func	DVD-RW doesn't support this function.
Erase Finished	The erasing of data comes to an end.
Erasing disc	The system is erasing the data on the disc.
Fail to get Drive Info!	The drive information cannot be obtained.
Fail to get Src Disc Info!	The information of source disc cannot be obtained.
Hold ESC to exit	Press ESC for a second to terminate the test.
Identical	The comparison results are the same.
Initialize SDRAM	Initialize the memory of the system.
Load Default Config?	Do you want to load the default settings?
No Erasable Disc in DVD-RW!!	The disc on the DVD-RW device is not rewritable.

Preparing	The system is preparing to record.
Press a Key to Eject Fail Disc	Press any key to eject the failed disc after copying.
Press a Key to Eject Good Disc	Press any key to eject the good disc after copying.
Read disc error	During comparison the disc cannot be read.
Save new config Fail!	The new setting of configuration cannot be saved.
Source Disc Empty!!!	The source disc doesn't contain any data.
Source Disc Not Ready	Source disc is not ready to be read.
Source Drive Not Ready.	Source drive is not ready to read.
Src&Tgt can't in the same channel	During comparison the source and target discs cannot be in the same channel.
Target Disc Not Empty!!!	The target disc still has data.
Target Disc Not Ready	Target disc is not ready to be written into.
Target Drive Not Ready	Target drive is not ready to write.
Target overflow	The target disc hasn't enough capacity to store new data.
TOC not match	The comparison results are not the same.
User Abort!	Cancel the job during operation.

2. Connecting with a HDD:

All data will be lost, format?	All data on the hard disk will be lost. Confirm the formatting of hard disk.
--------------------------------	--

Delete Image in Partition xx?	Confirm the deleting of data image in partition xx.
Format HDD?	Ask if you want to format the hard disk.
Format HDD OK	The Formatting of hard disk has been completed.
HDD not Format!	The hard disk hasn't been formatted yet.
HDD too small	The capacity of hard disk is too small.
HDD too small to handle image!	The hard disk hasn't enough capacity to store the data image (at least 5Gbytes).
Image Exists Overwrite?	There is a data image in the current partition. Confirm the overwriting of data.
Image load Fail	The image isn't successfully loaded from DVD to the hard disk.
Image load OK	The image is successfully loaded from DVD to the hard disk.
No Image in Partition xx	There is no data image in partition xx.
No Valid HDD!	The system cannot find a hard disk.
Partition Damage	The partition is damaged.
Select HD First!	Select a formatted hard disk at first.
Verify Disk or Partition?	Do you want to verify the hard disk or just a partition?
Verify Hard Disk Fail!	The hard disk is not verified successfully.

3. Audio Editing:

Burn or Move to partition?	Do you want to directly copy the data into disc or move them to the partition.
Can't edit HDD	The hard disk cannot be edited as a source audio disc.

Burn or Move to partition?	Do you want to directly copy the data into disc or move them to the partition.
Can't edit HDD	The hard disk cannot be edited as a source audio disc.
Close all disc's session?	Confirm the closing of disc sessions.
Continue edit next Disc?	Ask if you want to continue the music disc editing.
End edit disc and burn?	Finish the music disc editing and start to copy.
Erase selected Tracks?	Abort the selected tracks and delete them.
Ins empty disc Continue?	Do you want to insert a blank disc and continue copying?
Insert next disc	Insert the next audio disc.
NO AUDIO track in this dis	The source disc has no audio track.
Sessions were closed already!	The disc sessions have already been closed.
Target Overflow Re-Select	The disc capacity is not enough to store the selected tracks. Please select again.
Tgt overflow, del last trk?	The disc capacity is not enough to store the selected tracks. So, do you want to delete the last track?

4. Firmware Update:

Check Sum Error!	The updated firmware has errors.
Flash ROM fail!	Data cannot be written into Flash ROM.
Invalid firmware	The disc doesn't contain a valid firmware.

Last update F/W Fail!.	The firmware is not updated successfully.
Last update F/W OK!	The firmware is updated successfully.
Searching F/W	The system is searching for a valid firmware.
Source can't be Hard Disk!	During comparison the source cannot be hard disk.

Appendix B - LightScribe Utility Installation (Optional)

1. Minimum System Requirements

CPU: Pentium 3 Class or equivalent


Drive: CD/RW Recorder

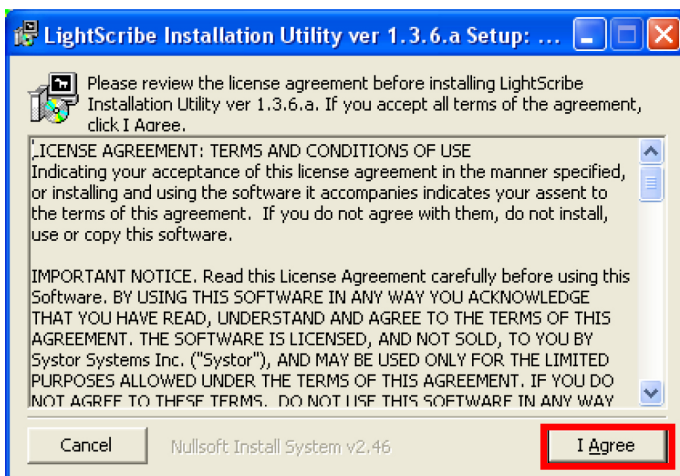
RAM: 32MB

Hard Drive Space: 10Mbytes

OS: Windows 2000, XP, Vista or Win 7

2. Software Installation

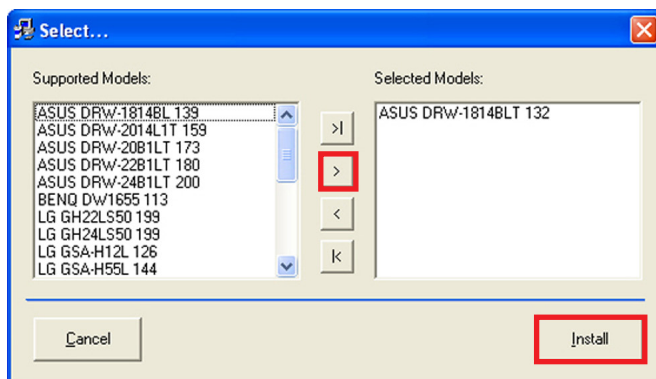
1. Insert the LightScribe utility Installation Disc into the CD driver of your computer.
2. Using the “My Computer” icon or Windows Explorer, click on the CD drive.
3. From the CD Drive, double-click the “LightScribe_Install_Utility.exe”  icon to run the setup program.
4. Follow the Installation Wizard to start the installation process, see screen below:



Note: If you accept all terms of the license agreement before installing LightScribe Installation Utility, click “I Agree”.

Please disable “User Access Control” function temporary before install LightScribe Utility.

5. The installation wizard will show the present of supported device Models list as follow figure:

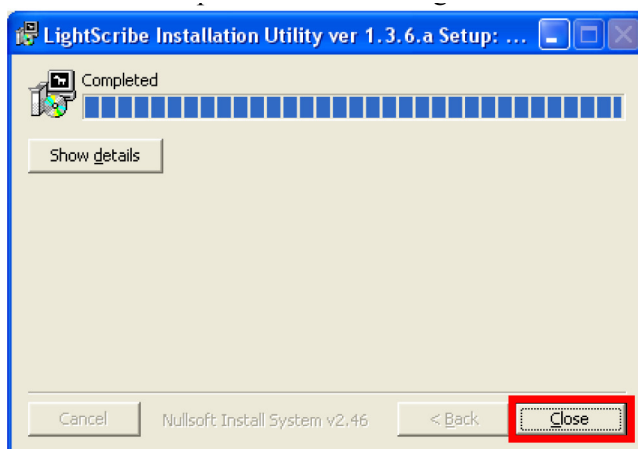


6. We advised that all devices in the Supported Models list choose your device and move it to Selected Models list and then click **“Install”** to continue the installation process. (It will keep you a few minutes to finish Installation).

****See 2.12.14 Device Info to find out your Model Information****

Note: During the installation, there are two different programs will be installed. According the prompting windows to finish installation.


7. Last, click **“Close”** button to finish install process as follow figure.



Appendix C - LightScribe Utility Quick Guide (Optional)

The following Quick Start Guide will demonstrate how to use the Template Labeler to generate the label files that can be used by the LightScribe Duplicator.

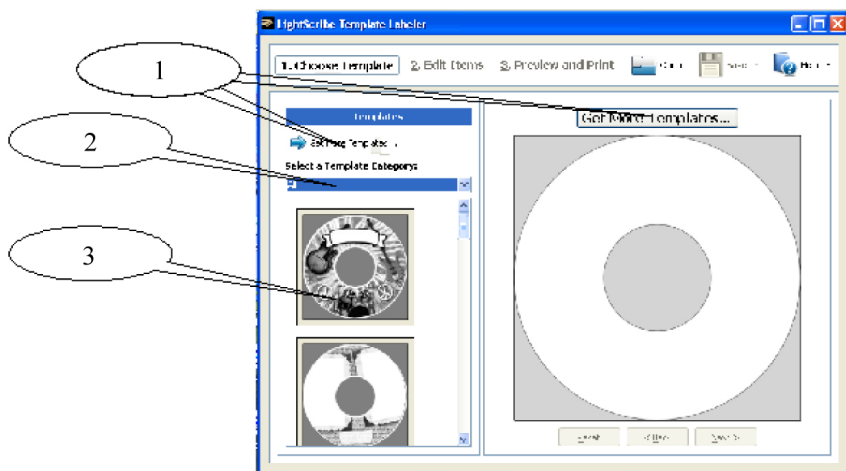
1. Launch the LightScribe cover design

1. Double-click the  (Once installed, the LightScribe icon appears on your computer's desktop) to open Utility start window.
2. Please ignore the “LightScribe Disc Insertion” prompt below by pressing the “OK” button to continue.



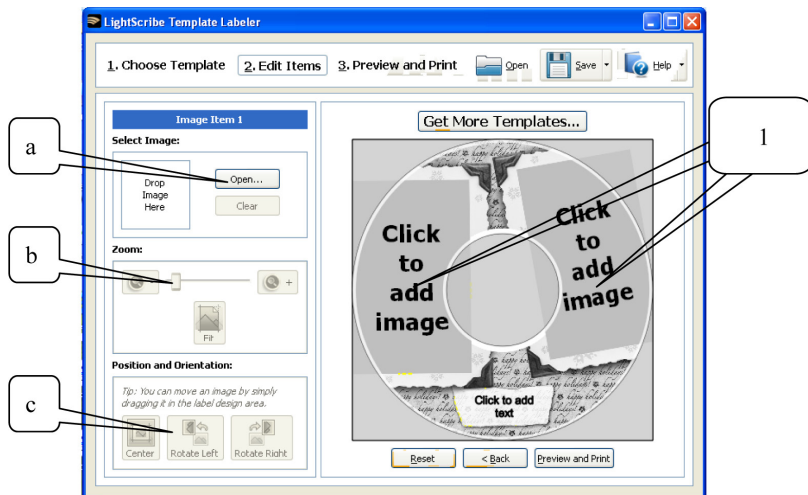
2. Select Template

1. Choose one of the preinstalled templates, or click on “Get More Templates” to download additional templates.
2. Select the Category filter function to more easily view and choose a template. Note that each template may appear in multiple categories.
3. Click on Template choice to activate.



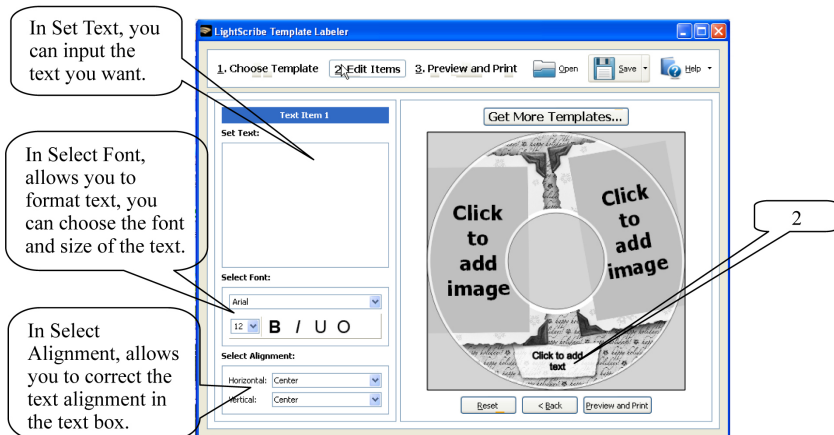
3. Edit Items (Text and Pictures)

1. Depending on the template chosen, you may have options to modify text box (es) or picture(s). For inserting pictures, just click on the dedicated area to select the picture you'd like to use.



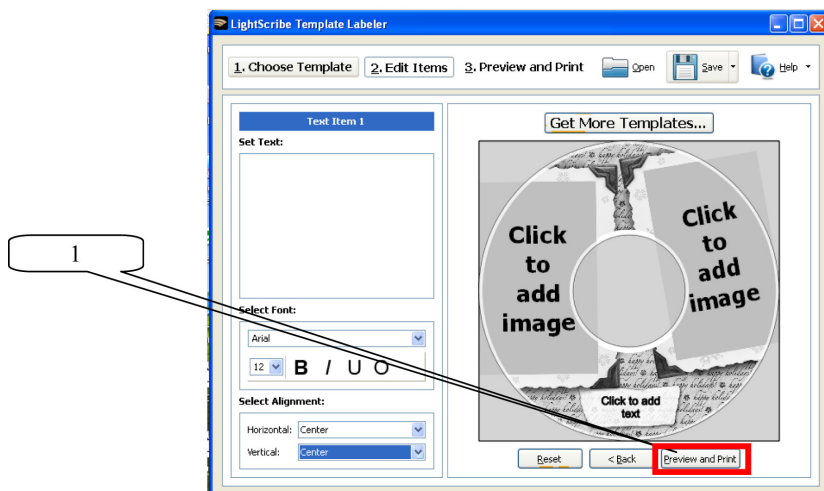
- a. You can select the picture you want, use the Open button.
- b. Use the Zoom button or the scroll wheel of your mouse to size the picture, then drag it to position it within the selection window.
- c. You can move an image by Simply dragging it in the label design area.

2. For text, just click on the text field then, type the text you'd like to appear within the text field. Note you can enter multiple lines of text depending on the template chosen.

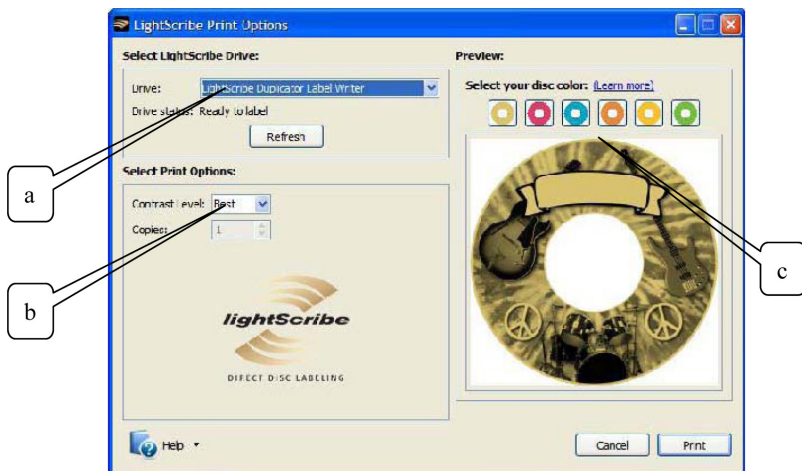


4. Preview and Print Label

1. Click on “Preview and Print” to bring up the print window.

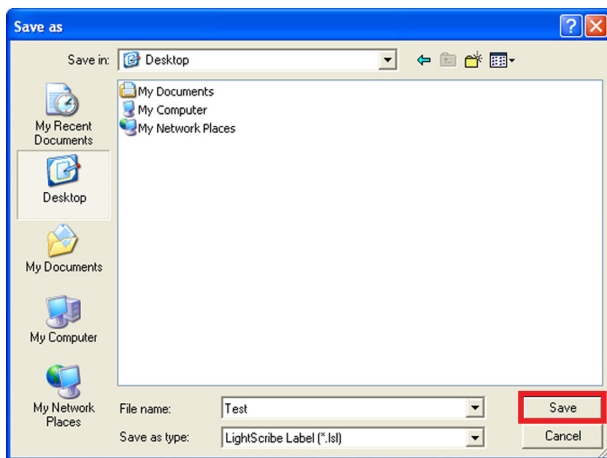


2. The LightScribe Print Options window opens, as follow figure.

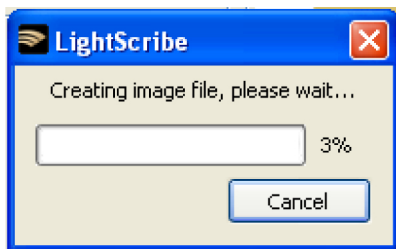


- a. This should appear as “LightScribe Duplicator Label Writer” as shown above.
- b. Select print options, which you can use to adjust the print quality and define the number of copies you require.
- c. Select disc color, which you can use to select what disc background color you’ll use to print.

3. If you have already made the right choice, you can click “Print” button to save this configuration in .lsi format. (You can custom file name and file path)



4. Click the save button, the saving process begins. You can monitor the process status with the progress bar as follow figure:



Note: As soon as the saving is finished, please wait!

5. Create a Data CD with the generated label file(s)

If .lsi file have successfully created, LightScribe print window will displays a message about the result of the saving process. You must copy .lsi file into a blank CD via a CD Creating Software; like Nero Burning-ROM.

Note: DO NOT place label file(s) under any directory/folder of the Label CD. Failure to do so will result in the label file(s) not being recognized by your system.

6. Using LightScribe Duplicator to print copies of your disc label.

1. Power On the LightScribe Duplicator.
2. Place the Data CD that contains the label files you wish to copy into the source device Tray.
3. Place a recordable LightScribe disc into the target LightScribe recorder with the label side facing down.
4. Go to menu “11.LightScribe” by pressing UP or DOWN buttons. Then press “ENT” key into menu “Print” and press “ENT” key to start the label printing process last.
5. Upon completion, the printed discs will be ejected.



Power On!



Place the label files Disc!



Place a recordable LightScribe disc into the target LightScribe recorder with the label side facing down and run “Print” to start the label printing!