

ZT-2550/ZT-2551

User Manual

Warranty

All products manufactured by ICP DAS are under warranty regarding defective materials for a period of one year, beginning from the date of delivery to the original purchaser.

Warning

ICP DAS assumes no liability for any damage resulting from the use of this product. ICP DAS reserves the right to change this manual at any time without notice. The information furnished by ICP DAS is believed to be accurate and reliable. However, no responsibility is assumed by ICP DAS for its use, nor for any infringements of patents or other rights of third parties resulting from its use.

Copyright

Copyright © 2012 by ICP DAS. All rights are reserved.

Trademarks

Names are used for identification purpose only and may be registered trademarks of their respective companies.

Technology Support

If you have any problems, please feel free to contact us via email at service@icpdas.com

Table of Contents

1	Introduction to ZigBee	4
2	Introduction to the ZT-255x Module	5
3	Hardware Information	6
3.1	Specifications	6
3.2	ZT-255x Front View	7
3.3	Dimensions (Units: mm)	8
3.4	Block Diagram	9
3.5	Wire Connections	9
4	Setting up the ZT-255x module	10
4.1	Introduction of configurations	10
4.2	Connecting the Power and Host PC	16
4.3	Configuring ZigBee Setting	17
4.3	Test Communications	20
5	Applications	21
6	Troubleshooting	22
7	Appendixes	24

What's in the shipping package?

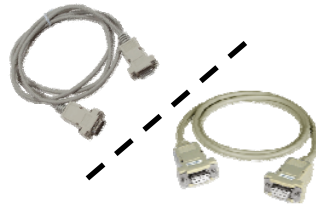
The shipping package includes the following items:



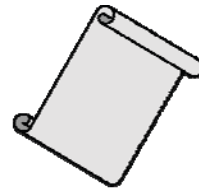
ZT-255x Device



ANT-124-05



CA-0915 (ZT-2550) /
CA-0910N (ZT-2551)



Release Note



CD

If any of these items are missing or damaged, please contact your local distributor for more information. Save the shipping materials and cartons in case you want to ship the module in the future.

More Information

■ Documentation:

CD: \Napdos\ZigBee\ZT_Series\Document

http://ftp.icpdas.com/pub/cd/usbcd/napdos/zigbee/zt_series/document

■ Software:

CD: \Napdos\ZigBee\ZT_Series\Utility

http://ftp.icpdas.com/pub/cd/usbcd/napdos/zigbee/zt_series/utility

1 *Introduction to ZigBee*

ZigBee is a specification for a suite of high-level communication protocols using small, low-power digital radios based on the IEEE 802.15.4 standard for personal area networks. ZigBee devices are often used in mesh network form to transmit data over longer distances, passing data through intermediate devices to reach more distant ones. This allows ZigBee networks to be formed ad-hoc, with no centralized control or high-power transmitter/receiver able to reach all of the devices. Any ZigBee device can be tasked with running the network.

ZigBee is targeted at applications that require a low data rate, long battery life, and secure networking. ZigBee has a defined rate of 250 kbit/s, best suited for periodic or intermittent data or a single signal transmission from a sensor or input device. Applications include wireless light switches, electrical meters with in-home-displays, traffic management systems, and other consumer and industrial equipment that requires short-range wireless transfer of data at relatively low rates. The technology defined by the ZigBee specification is intended to be simpler and less expensive than other WPANs.

2 **Introduction to the ZT-255x Module**

The Basis of ZT-255x Series Product

The ZT-2550 and ZT-2551 series modules are small-sized wireless ZigBee converters based on the IEEE802.15.4 standard that allow RS-232, RS-485 interface to be converted to a personal area ZigBee network. The typical transmission of ICP DAS ZT series ZigBee products is 700 meters (LOS, line of sight), with a transmission frequency range of between 2.405 GHz and 2.48 GHz, separated into 5 MHz sectors, providing 16 channels and 16384 PAN IDs. ZT-2000 series is not only a long distance wireless converter but also can act a ZigBee router to extend the transmission range and improve the quality of wireless signal.

ZT-2000 series products are specification for a suite of high level communication protocols using small, low-power digital radios module, which are fitted the ZigBee 2007 (ZigBee Pro) of ZigBee Alliance. In the ZigBee network, it is only allowed one ZigBee Host and called "ZigBee Coordinator", ZT-2550 series products, are used to initialize and manager the routing. In addition, One ZigBee network are able to manager 255 ZigBee router and responsible for receiving or bypassing data from parent or child node.

The Benefits of ZT-255x Series Product

A Windows compatible GUI configuration utility is available. The utility allows users to set different configurations based on the type of application, together with several of required ZigBee variables such as Pan ID. The friendly user interface is also helping user be familiar with ZT-2000 series.

For more information, please refer to the relevant documents for these devices, which can be found at following link:

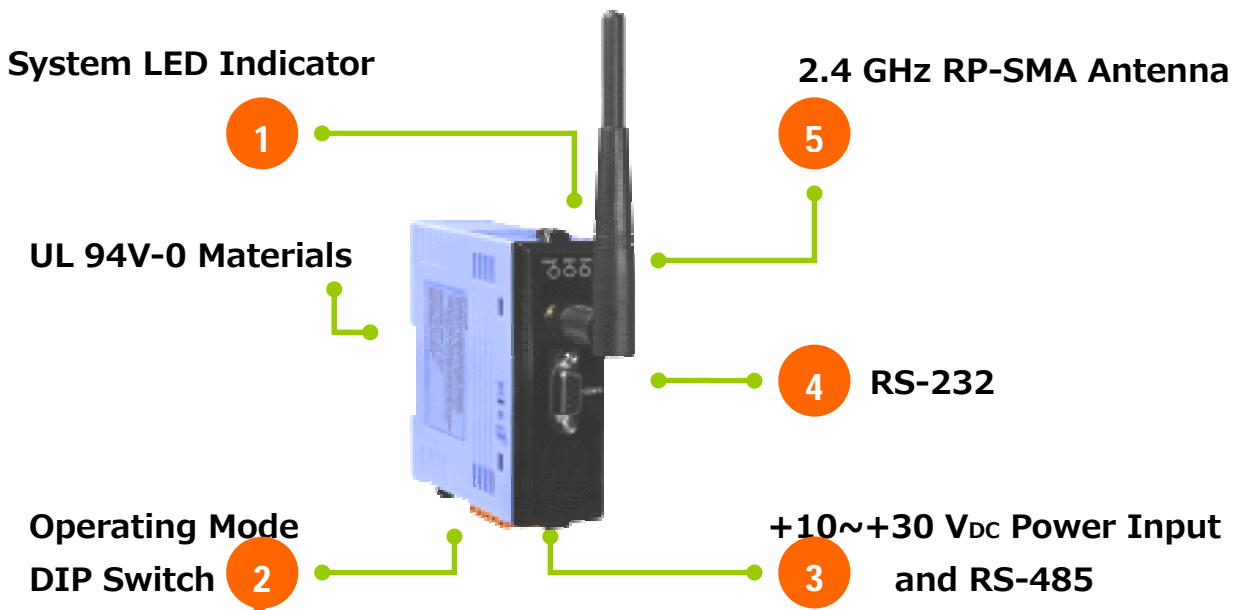
http://ftp.icpdas.com/pub/cd/usbcd/napdos/zigbee/zt_series/document

3 *Hardware Information*

3.1 Specifications

Part Number		ZT-2550 (Coordinator)	ZT-2551 (Router)
Hardware			
MCU Module		8-bit microprocessor	
Temporary Buffer Size		400 Bytes	
LED	Green	ZigBee Net	
	Yellow	ZigBee RxD	
	Red	ZigBee Power	
Communication Interface (COM0)			
COM0	RS-232	RS-232 (TxD, RxD and GND);	
		D-Sub 9 Female, Non-isolated	D-Sub 9 Male, Non-isolated
	RS-485	RS-485 (DATA+, DATA-; internal ASIC self-tuner); Non-isolated	
	Data Format	N81/O71/E71/N82/O81/E81	
Power			
Protection		Power Reverse Polarity Protection	
EMS Protection		ESD, Surge, EFT	
Required Supply Voltage		+10 V _{DC} ~ +30 V _{DC}	
Power Consumption		1 W(Max.)	
Mechanism			
Casing		Plastic	
Flammability		UL 94V-0 materials	
Dimensions		33 mm x 78 mm x 107 mm (W x L x H)	
Installation		DIN-Rail	
Environment			
Operating Temperature		-25°C ~ +75°C	
Storage Temperature		-40°C ~ +80°C	
Relative Humidity		5 ~ 95% RH (non-condensing)	
Wireless			
RF Channels		16	
RF Transmit Power		11 dBm	
Antenna (2.4GHz)		5 dBi Omni-directional antenna	
Transmit Range (LOS)		700 m (Typical)	
Max. Slaves Supported		255	
EMI Certification		CE/FCC, FCC ID	

3.2 ZT-255x Front View



1. LED Indicator Status

LED Indicator	LED Color	Explain
ZigBee Net	Green	The status of ZigBee network.
ZigBee RxD	Yellow	The status of ZigBee communication
ZigBee PWR	Red	The status of module board

※ For more details, please see the section 6 troubleshooting.

2. Operating Mode DIP Switch

- ZBSET: Configuration mode is able to use ZT Configuration Utility to configure via the RS-232 or RS-485 interface.
- ZBRUN: Transmit mode is used to transmit data to the remote device.

3. RS-485 and +10 V_{DC}~+30 V_{DC} Power Input

- The RS-485 and RS-232 are communicable via the same UART.
- The ZigBee PWR indicator will be steady light if correct power input.

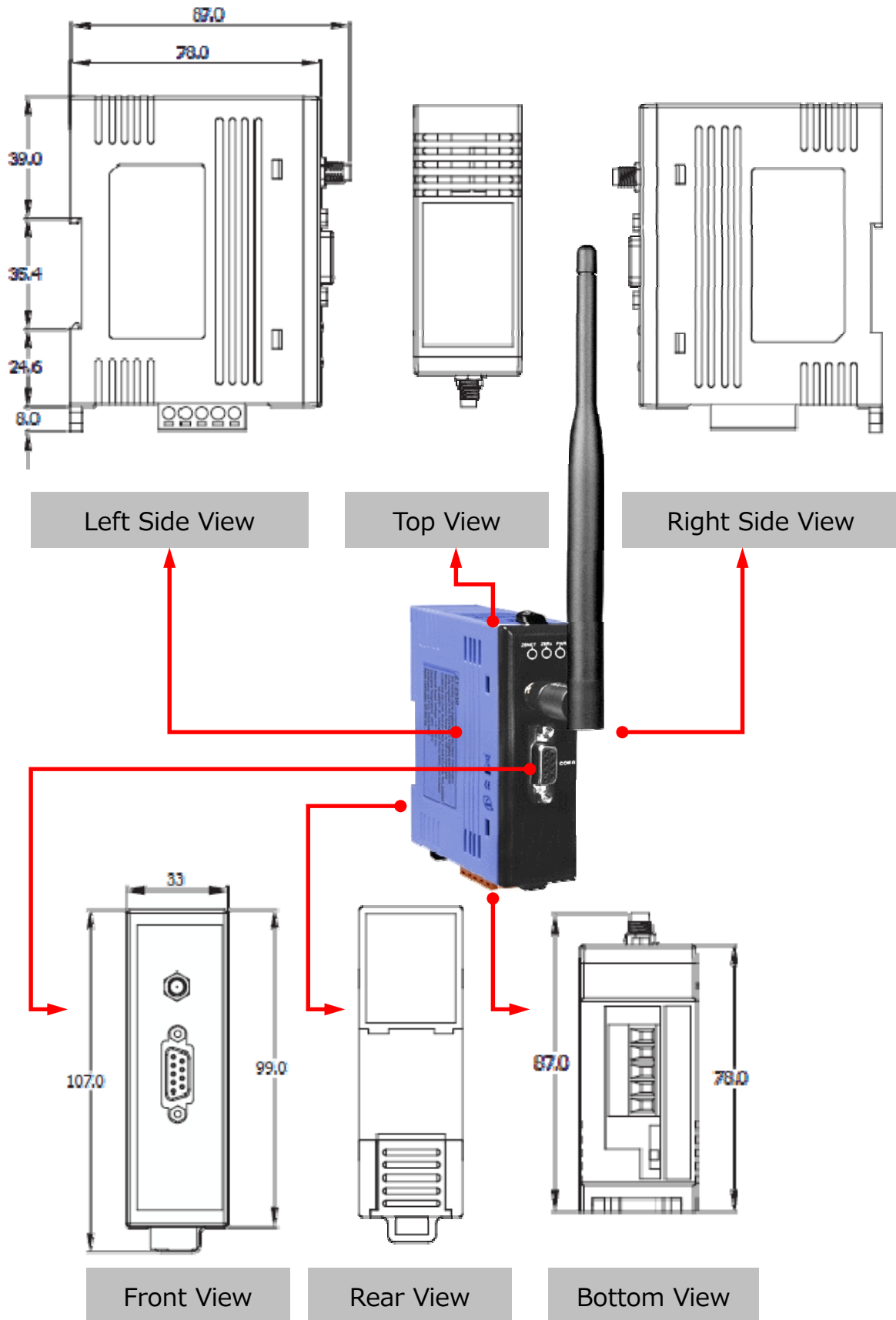
4. RS-232

- The RS-485 and RS-232 are communicable via the same UART.

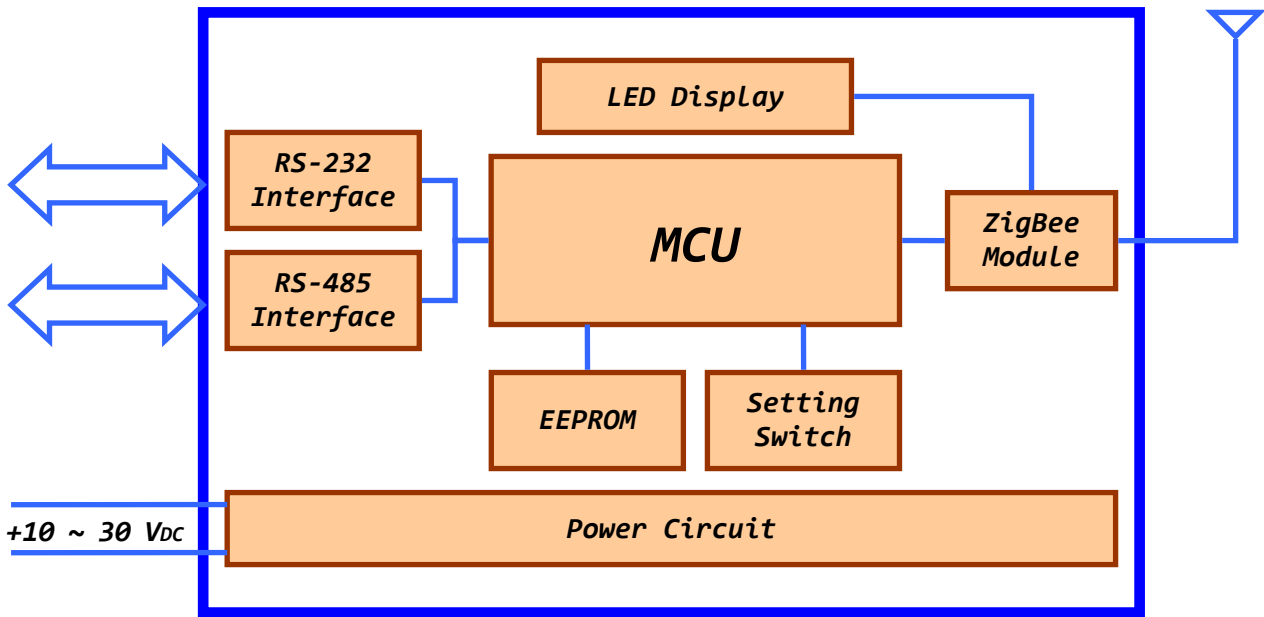
5. 2.4 GHz RP-SMA Omni-directional Antenna

- If there is any requirement for extension cable, it must be a connector with the type RPSMA and resistance 50 Ohm. Ex. 3S001-1, 3S003-1...etc

3.3 Dimensions (Units: mm)

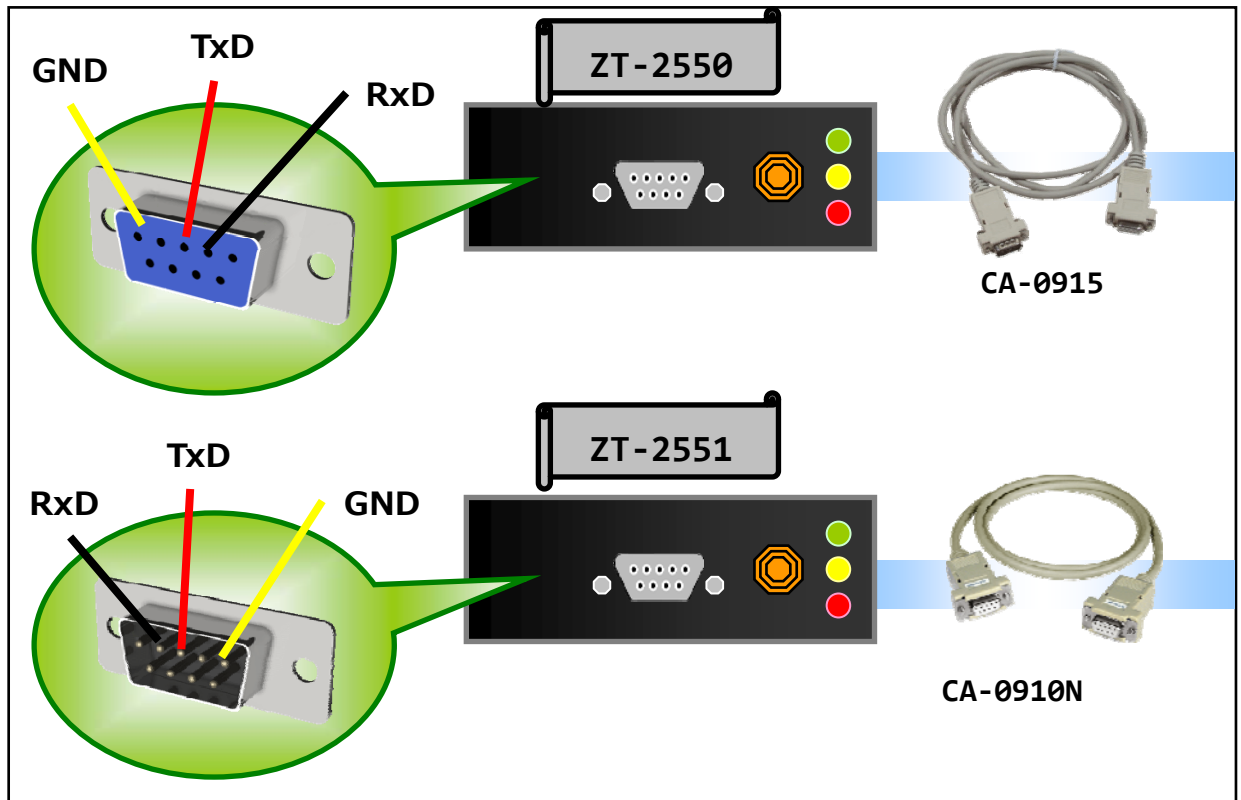


3.4 Block Diagram

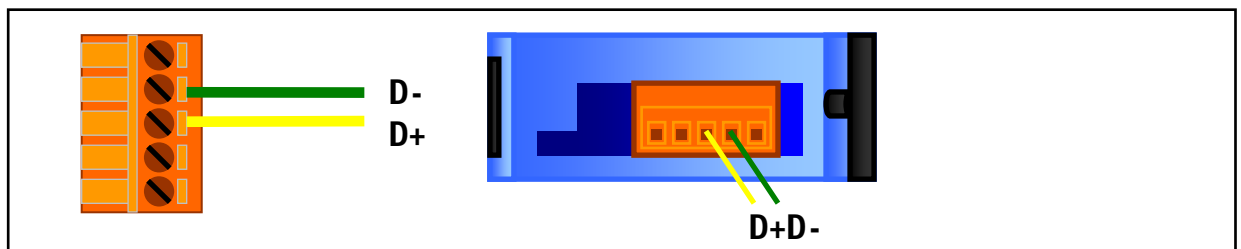


3.5 Wire Connections

1. RS-232



2. RS-485



4 Setting up the ZT-255x module

4.1 Introduction of configurations

1. **“Pan ID”** is the group identity of a ZigBee network, and must be the same if they are in the same ZigBee network.
(Valid values range from 0x0000 to 0x3FFF)

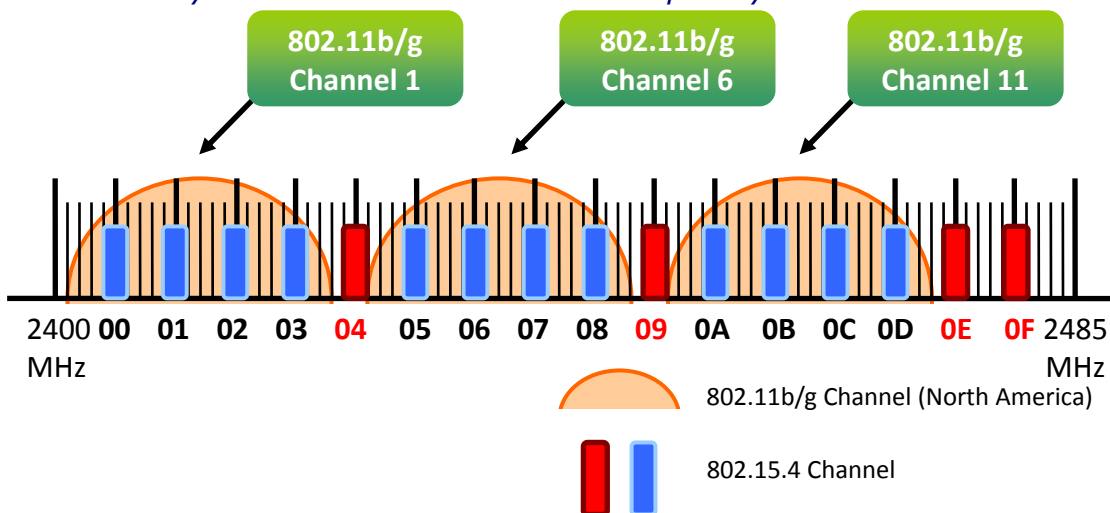
2. **“Node ID”** is the identity of the ZigBee module.

The identity number must be unique if it is in the same ZigBee network as other ZigBee module. (Valid values range from 0x0001 to 0xFFFF7 for a ZigBee Router, but is fixed to 0x0000 for a ZigBee Coordinator)

3. **“RF Channel”** indicates the radio frequency channel, and must be set to the same channel if the module is in the same ZigBee network as other ZigBee modules.

Channel	0x00	0x01	0x0F
Frequency(MHz)	2405	2410	2480

※ In addition, the RF channels 0x04, 0x09, 0x0E and 0x0F are recommended because they are not covered with the frequency of Wi-Fi.



4. "RF Power" denotes the wireless transmit power value.

Code	Note
0x0F	Typical Maximum
0x08	Fit the CE/FCC certification
0x00	Typical Minimum

※ *The parameter adjustment purely personal behavior, ICP DAS can not guarantee to pass CE/FCC certification if adjusting this parameter, nor assume any liability because of the adjustment parameters derived from the RF Power.*

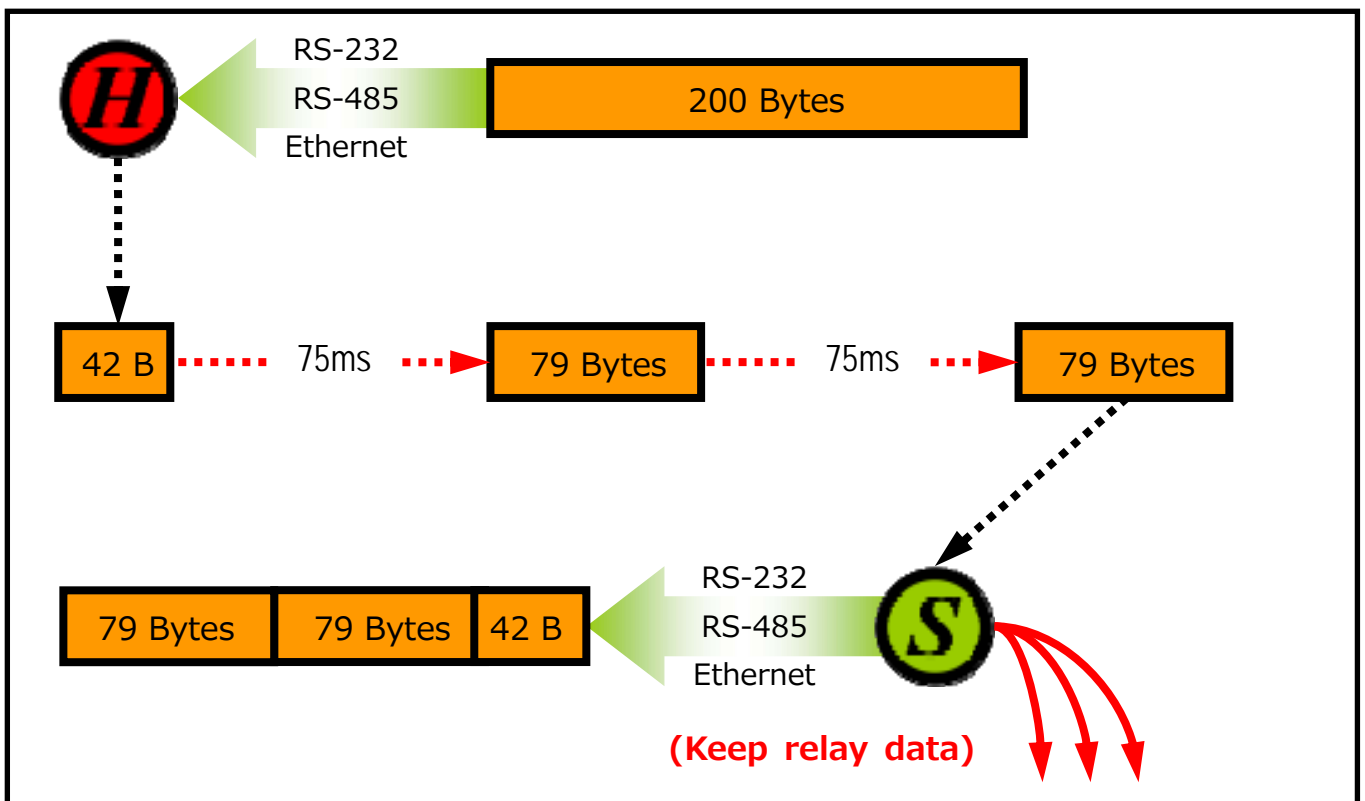
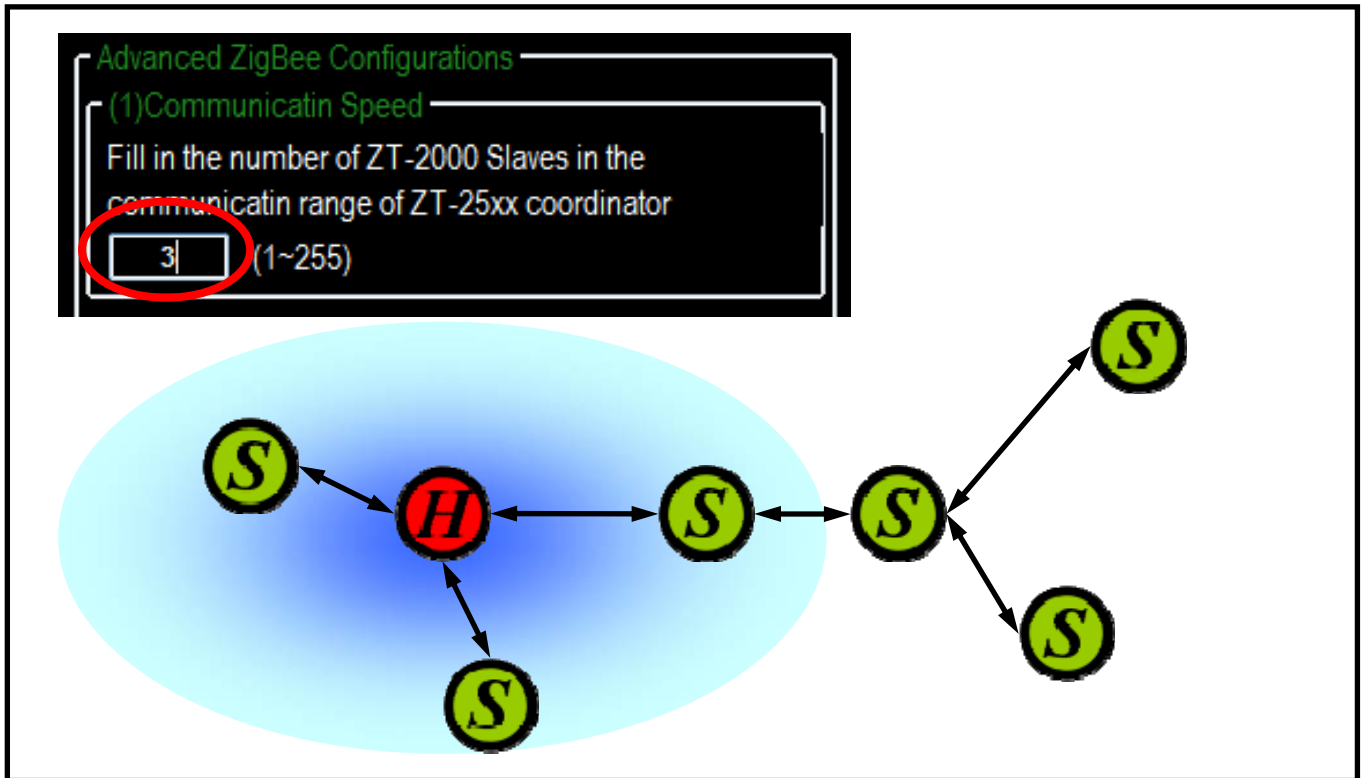
5. "Baud rate & Data Format" values are based on the configuration of the serial port.

Item	Specification
Data Format	N81、O71、E71、N82、O81、E81 or N82
Baud rate	1200 ~ 115200 bps

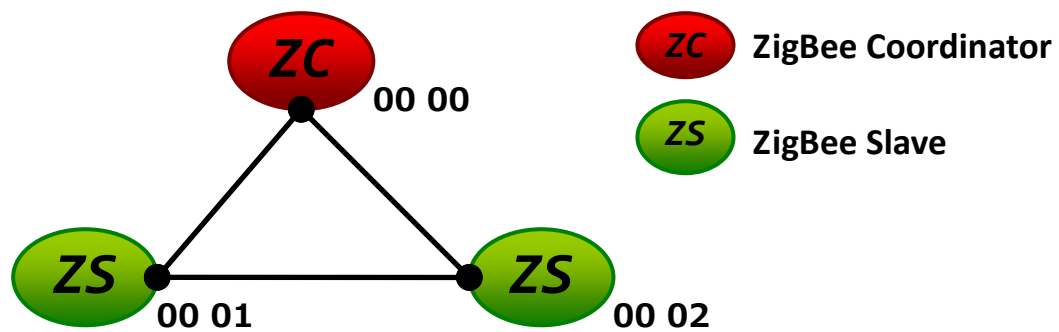
6. Communication Speed (Broadcasting Frame Sending Interval):

The packet payload of ZT-2000 series devices is 79 bytes. Data above 79 bytes will be transmitted in several packets. This parameter decides the broadcasting frame sending interval time to avoid the network overloading. User only fills in the number of ZT-2000 slaves nearby the ZigBee Coordinator.

➤ Example:



7. **Application Mode** can be changed and used for certain specific purpose.



The above schematic diagram is showing what the difference of using different application modes.

a. **Transparent Mode** is the default application mode, and always transmits data to the remote device via broadcasting. Unless there are specific purposes, the application mode can be retained as default.

The mode always bypasses data to remote side via broadcasting. If there is no particular purpose, user only keeps this application mode.

Module	Frame Type	Note
ZT-2550	Broadcast	Data will be sent to all ZigBee slaves
ZT-2551	Unicast	Data will only be sent to the coordinator

[Ex1] When ZT-2550 ZigBee Host sends "DATA_01" via broadcasting frame,

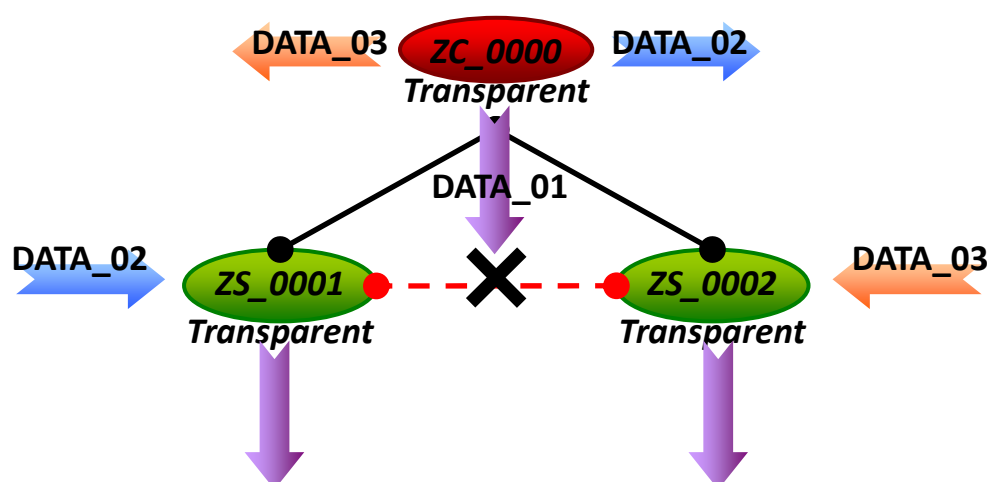
→ Both of the ZigBee slave 0x0001 and 0x0002 will receive the DATA_01.

※Broadcasting type frame, data will be sent to every ZigBee slaves in the same ZigBee network

[Ex2] When the ZigBee slave 0x0001 sends "DATA_02" via unicast frame,

→ Only ZT-2550 receives DATA_02.

※Unicast type frame, data will only be sent to the ZigBee host



b. **Addressable Mode** is an advanced application mode and it is used to send data to specific ZigBee nodes. It is not only used to transmit data to specific ZigBee slaves from host but also transmit data between ZigBee slaves. A 5-byte ASCII code should be added as an index before the data.

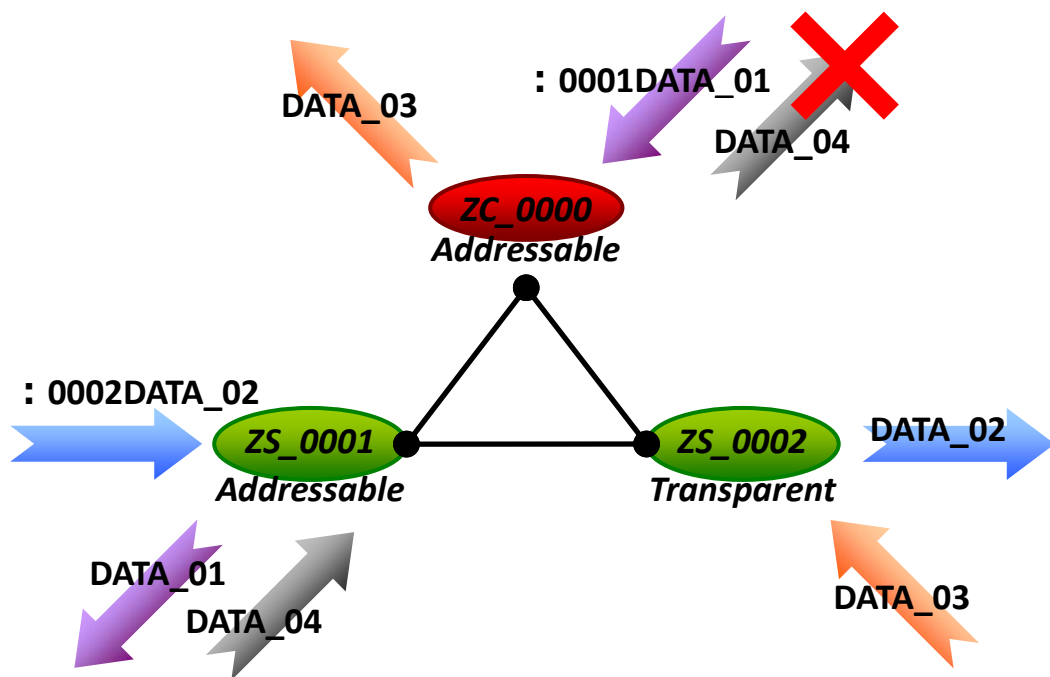
Module	Frame Type	Note
ZT-2550 ZT-2551	Unicast	Data will be sent to a specific ZigBee slave. Format: ":AAAA" + Data

[EX1] When ZT-2550 ZigBee Host sends ":0001DATA_01" via unicast frame,
→Only the ZigBee Slave 0x0001 receives DATA_01.

※Unicast type frame, data will be only sent to the specific ZigBee node

[EX2] When ZigBee slave 0x0001 sends ":0002DATA_02" via unicast frame
→Only the ZigBee Slave 0x0002 receives DATA_02.

※Unicast type frame, data will be only sent to the specific ZigBee node



- c. **Modbus Gateway Mode** is an advanced application mode and it is used to convert the Modbus protocol. But there is only RS-232 and RS-485 interface supported in the ZT-255x device, so the data is always regarded as Modbus RTU format transmission.

Module	Frame Type	Note
ZT-2550	Broadcast	Data is sent to all of ZigBee slaves
ZT-2551	Unicast	Data only be sent to coordinator

[EX1] When ZT-2550/ZT-2570 receives data "MRTU_CMD_01" from serial port,

→ZT-2551 will output the data "MRTU_CMD_01" to serial port directly.

[EX2] When ZT-2570 receives data "MTCP_CMD_02" from Ethernet,

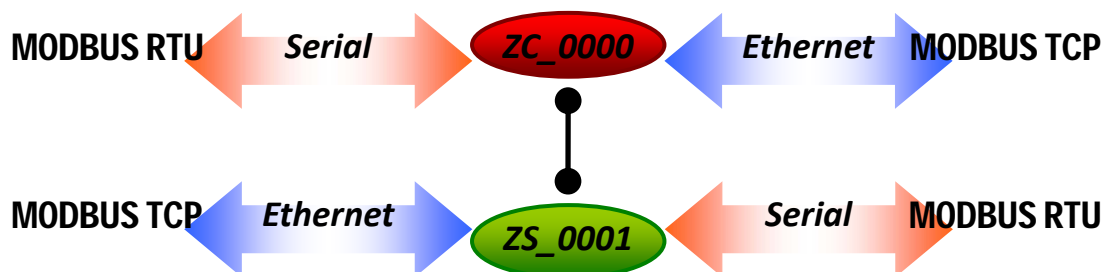
→ZT-2551 will convert protocol then output "MRTU_CMD_01" to serial port.

[EX3] When ZT-2551 transmits the acknowledgement "MRTU_ACK_03",

→ZT-2550/ZT-2570 will response the acknowledgement "MRTU_ACK_03" to serial port directly.

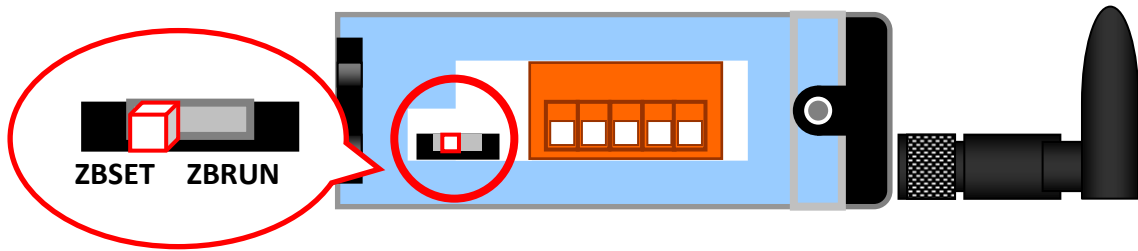
→ZT-2570 will convert protocol then output "MTCP_CMD_01" to Ethernet.

※Unicast type frame, data will only be sent to the ZigBee host



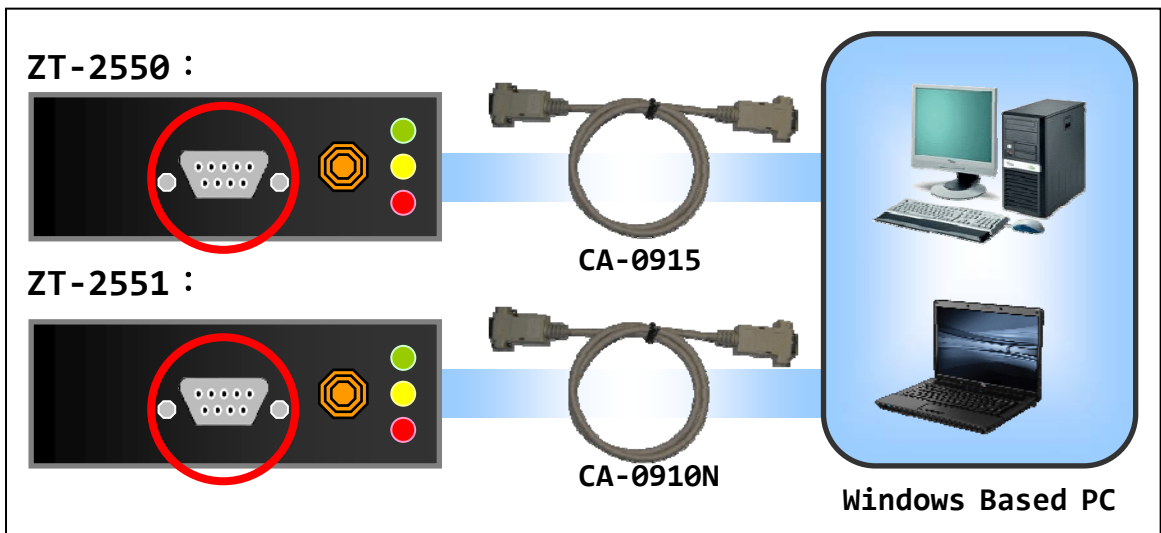
4.2 Connecting the Power and Host PC

1. Confirm that the DIP switch is set to the "ZBSET" position.

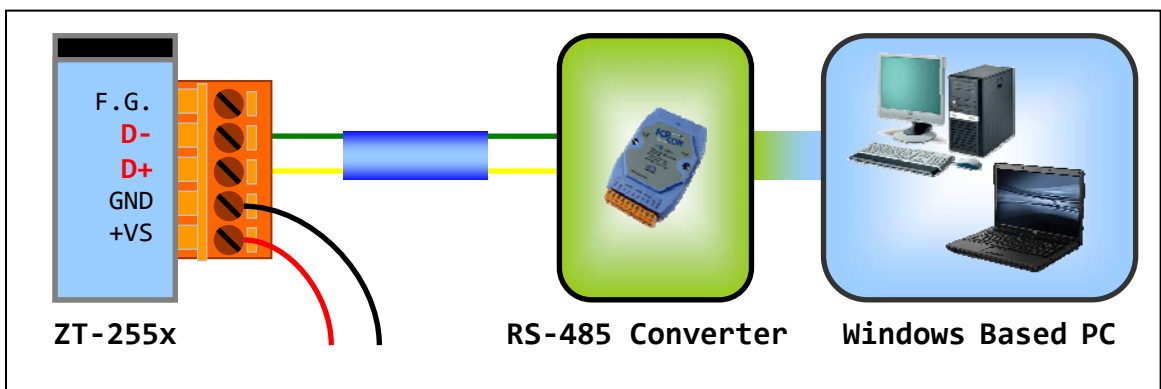


2. Connect either the RS-232 or RS-485 interface to configure the ZT-255x.

➤ RS-232 :



➤ RS-485 :



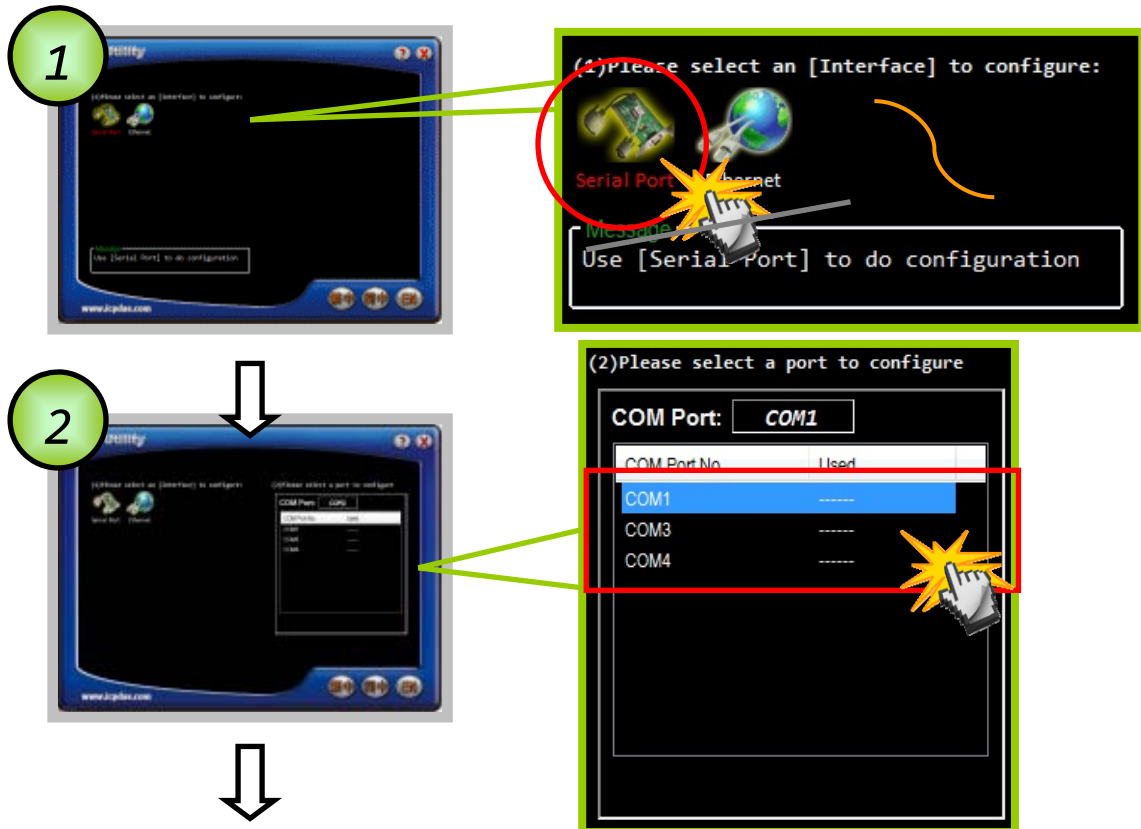
3. Enable the power. It means that the ZT-257x start-up procedure has been completed. If the red LED has changed from blinking to a steady light.

4.3 Configuring ZigBee Setting

1. Launch the "ZT Configuration Utility" and click the [ZT Series] button.



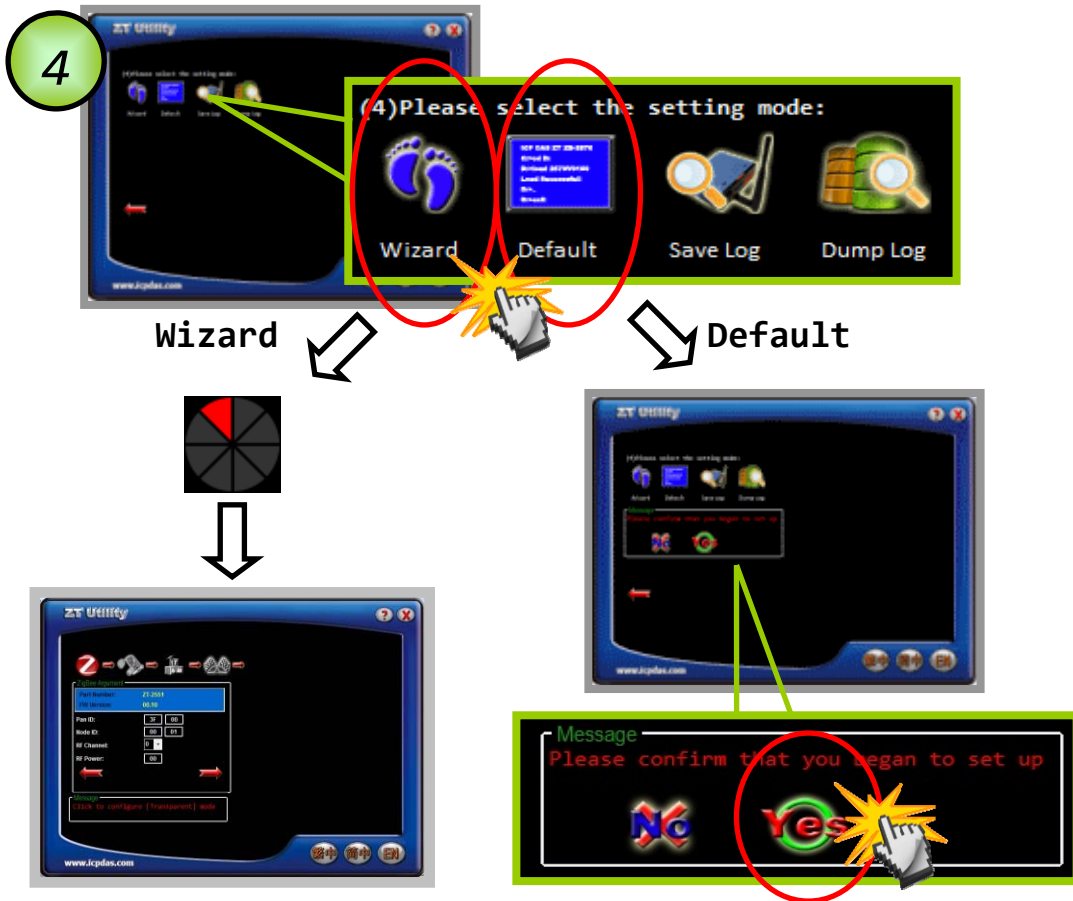
2. Click the [Serial Port] icon and then select the COM Port number.



3. After selecting the COM Port number, a list of model numbers will be displayed. Select the name of the module that you want to configure. After clicking the button, the utility will begin checking the connection.



- Once a connection is established, select either the [Default] or the [Wizard] function from the settings mode page.

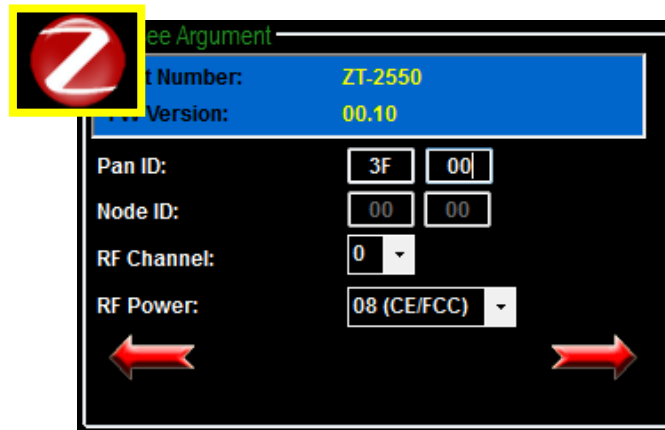


- Whether you select either the [Default] or the [Wizard] option for performing configuration, both are used to configure the Pan ID, Node ID, RF Channel, RF Power, Baud rate, Data Format, Application Mode and so the relevant parameters.

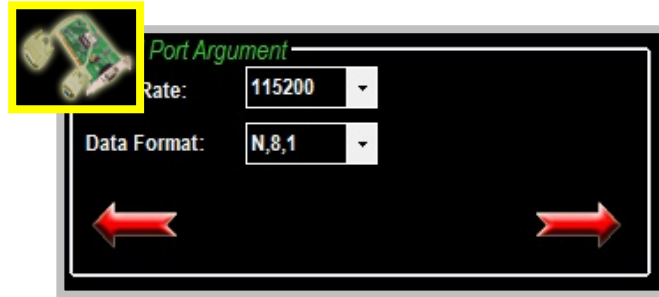


8. Pan ID/Node ID/RF Channel/RF Power

For more details, please see section 4.1.

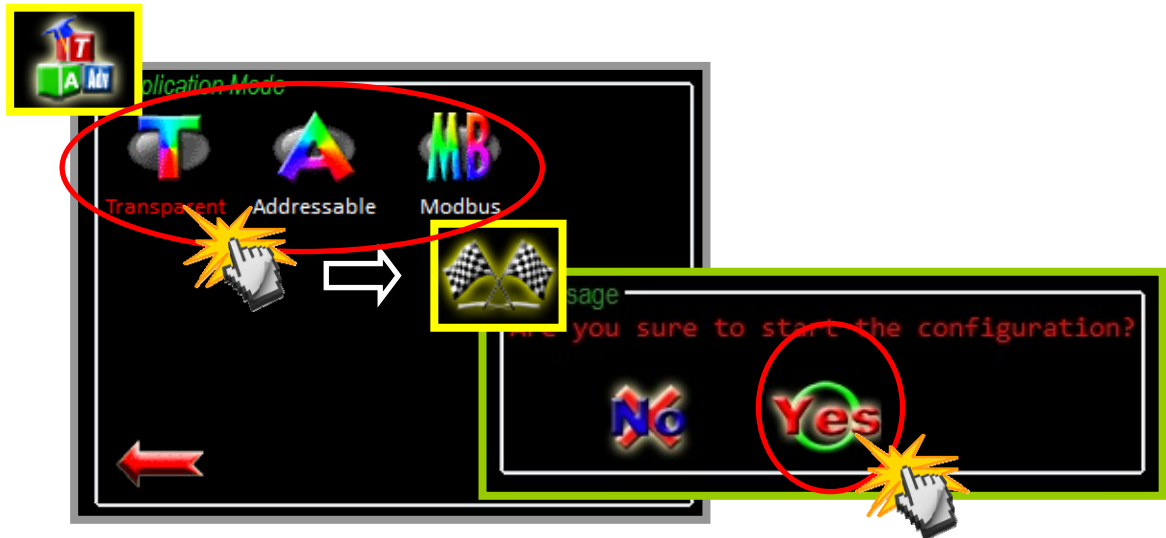


9. Baud Rate and Data Format

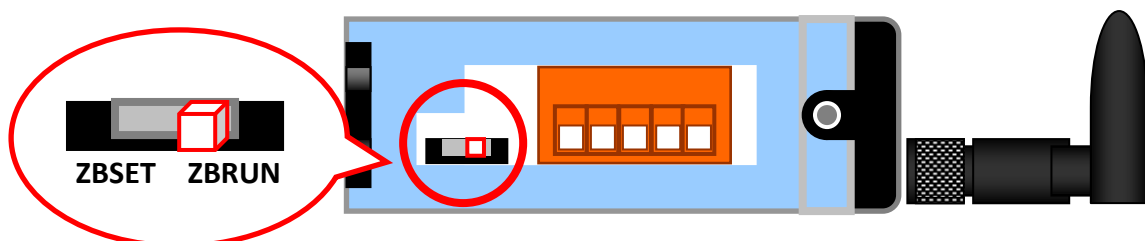


10. Application Mode

For more details, please see section 4.1.



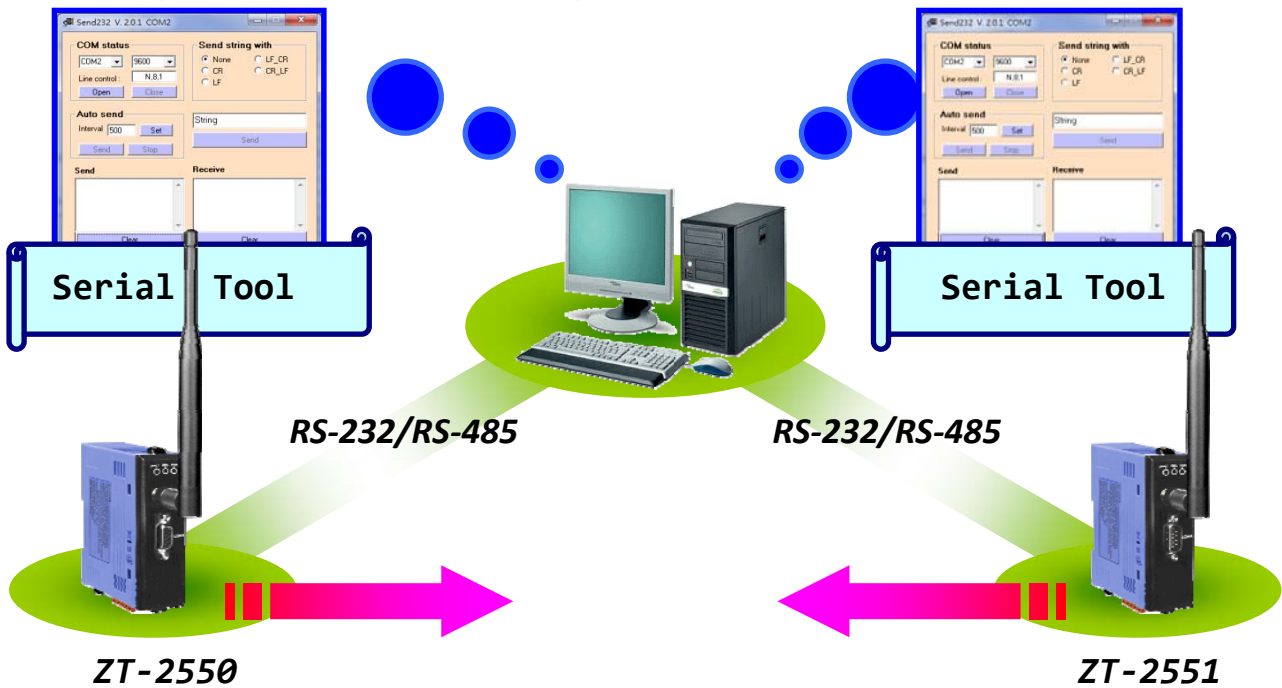
6. Once the module configuration has been completed, the message "The Configuration was successful" will be displayed. Return the DIP switch to the "ZBRUN" position and reboot the ZT-255x device.



4.3 Test Communications

Method (1)

Connect both the ZT-2550 and ZT-2551 to the Host PC via the RS-232 port. You may need to use two serial port tools to simulate the data transmission.



Method (2) :

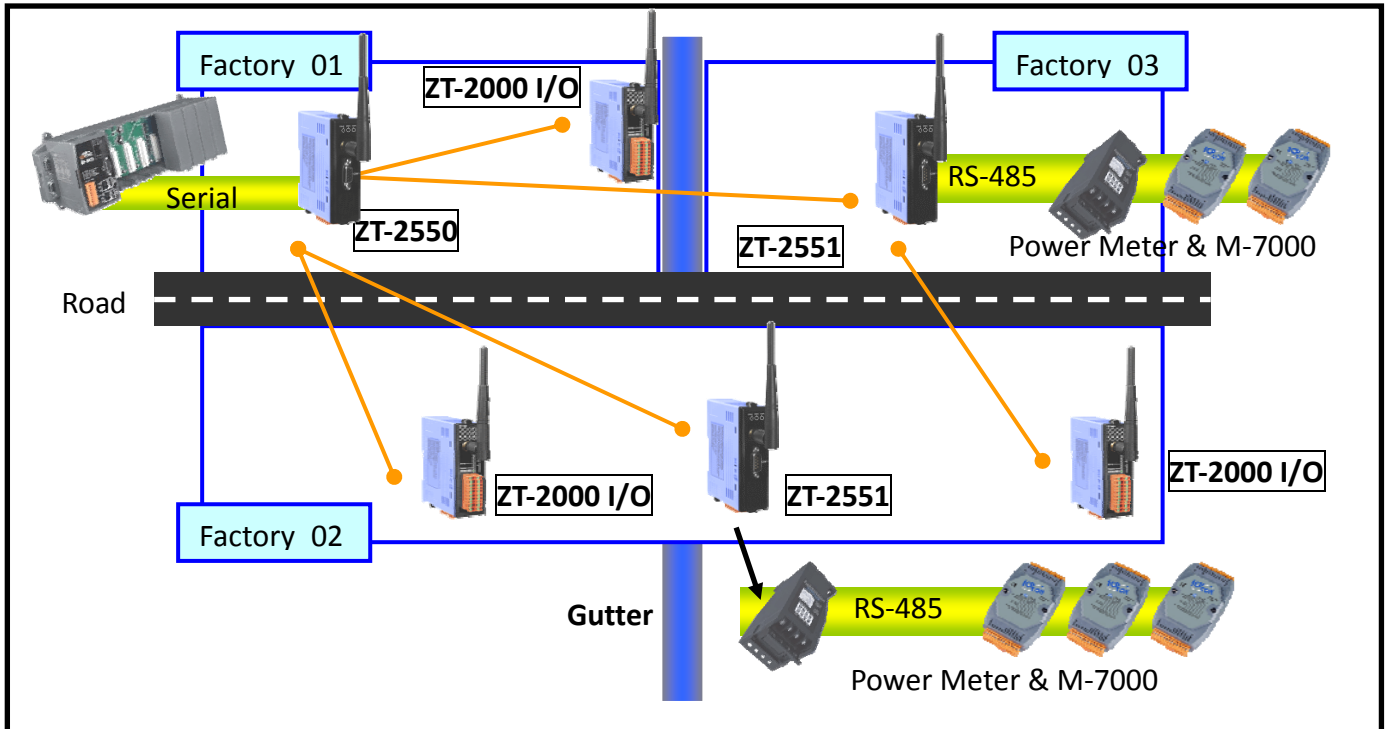
Use the DCON Utility on the Host PC to search for ZT-2000 series I/O modules. If there any devices are found, it means that the configuration is correct.



5 Applications

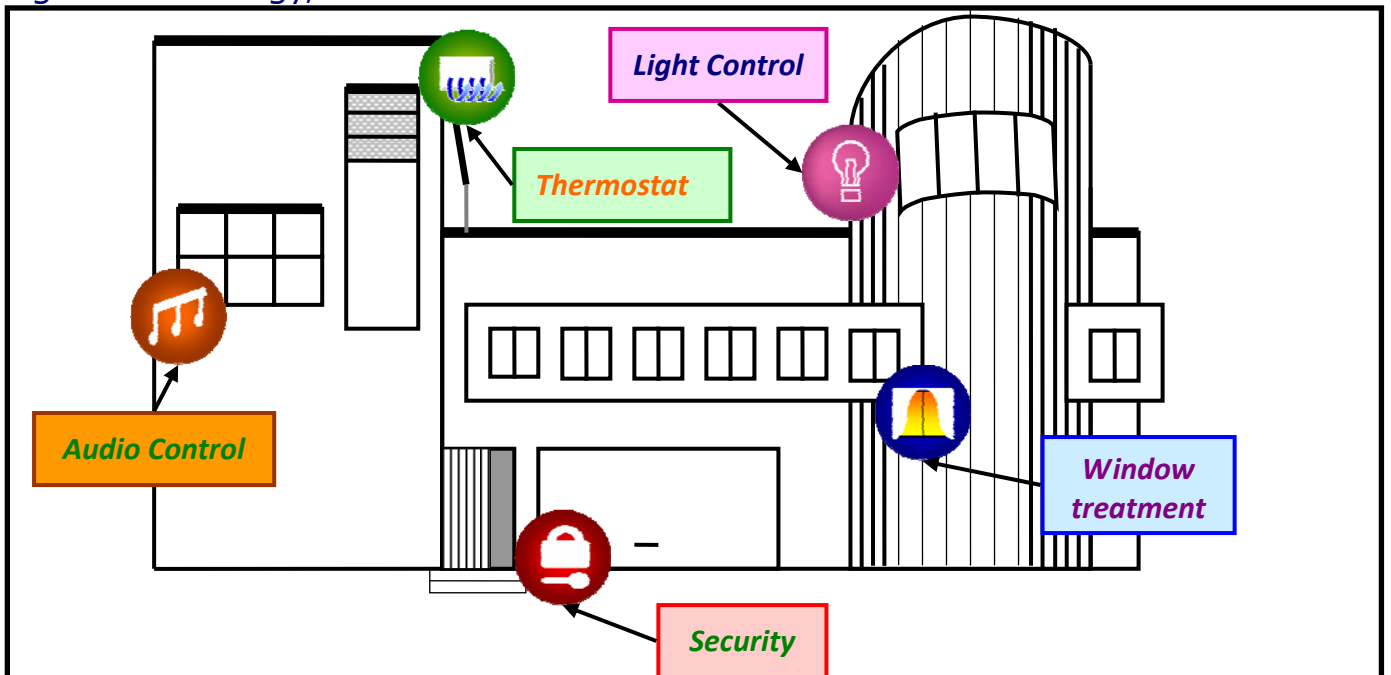
(1) The ZT-255x is suitable for using in which is wiring difficult and low data rate environment.

Eg. The I/O nodes are across the road, building or gutter...



(2) ZT-255x is suitable to use in monitoring and controlling.

Eg. Smart energy, Home automation...



6 Troubleshooting

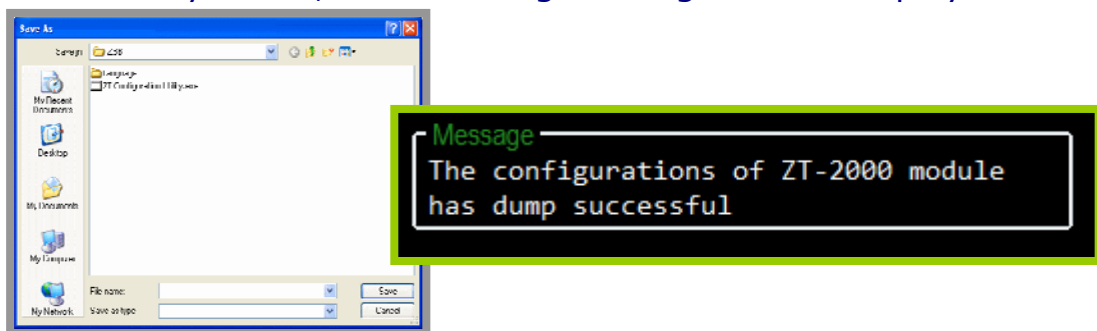
(1) Technical Support.

If you are any difficulties using the ZT-255x module, save the ZigBee configurations using the described below. Please also provide a description of problem and attach file to an email and send it to service@icpdas.com

- a. Set the DIP switch of the ZT-255x device to the [ZBSET] position then reboot the device. Launch the ZT Configuration Utility and select [Save Log] icon to save the configuration of ZT-255x as a file.



- b. After clicking the [Save Log] icon, enter the "File Name" and "File Path" in the Windows save dialog. Once the configuration has been successfully saved, the following message will be displayed.



(2) LED Indicator Status :

LED Indicator	Status	Introduction
ZigBee Net (Green LED)	ZigBee Coordinator (Host)	
	Steady Lit	ZigBee network is establish
	Blink to Steady Lit	Rejoin ZigBee network or it has occupied
	ZigBee Router (Slave)	
	Steady Lit	Signal Strength
	Blinking (500 ms)	Signal Available
	Blinking (1s)	Signal Weak
	Blinking (2s)	Signal Terrible or No ZigBee Network
ZigBee RxD (Yellow LED)	The status of ZigBee communication	
	Blinking	Receiving ZigBee data
	Steady Unlit	No ZigBee data received
ZigBee PWR (Red LED)	The status of module board	
	Steady Lit	Power on
	Blinking (200ms)	Module Initialization failure
	Blinking (1s)	Watchdog enabled
	Steady Unlit	Power off

7 *Appendixes*

◆ **Technical Support**

If you have any question or concerns about using your ZT-2000 series module, please feel free to contact at service@icpdas.com

If there is any question or concern for using ZT-2000 series module, please feel free to contact us. ICP DAS will reply you within three days at most as possible as we can.

Taiwan

Website : <http://www.icpads.com>

E-Mail : service@icpdas.com

TEL : 886-3-597-3366

FAX : 886-3-597-3733

Europe

Website : <http://www.icpdas-europe.com>

E-mail : info@icpdas-europe.com

TEL : +49(0) 7121-143324-0

FAX : +49(0) 7121-14324-90

China

Website : <http://www.icpdas.com.cn>

E-Mail : sales_sh@icpdas.com.cn

TEL : 86-21-6247-1722

FAX : 86-21-6247-1725

USA

Website : <http://www.icpdas-usa.com>

E-Mail : mailto:sales@icpdas-usa.com

TEL : 1-310-517-9888 x101

FAX : 1-310-517-0998