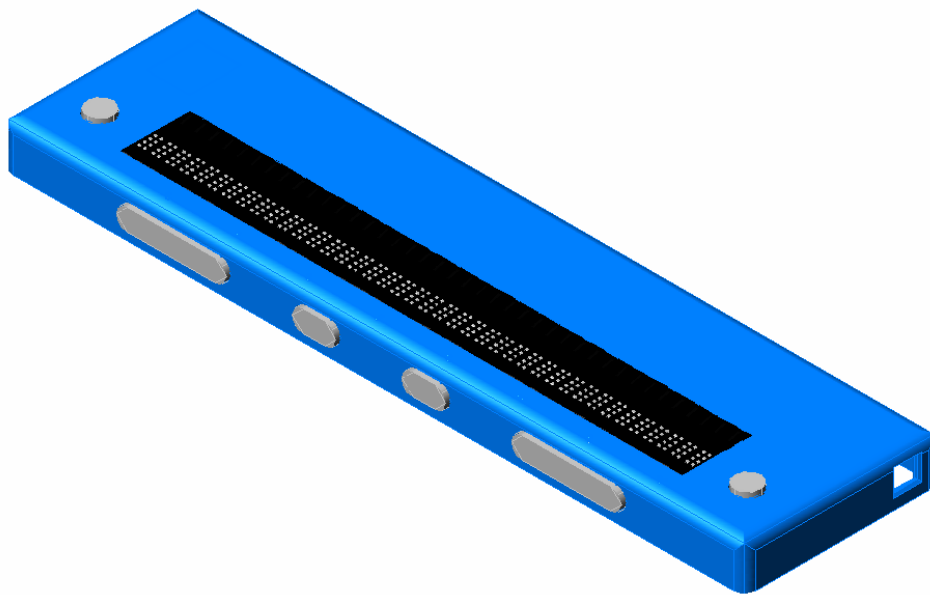


# *SEIKA*

## Trans Braille 40 Braille Display

---

User's Manual  
Version 3.3



## Preface

Thank you very much for purchasing a Trans Braille 40, Seika Braille Display.

This Braille display enables pins to display characters as they appear on the Windows screen.

Before using the display, please read this user's manual carefully.

If there is anything that you don't understand about using the display, or if you find mistakes or omissions in this user's guide, please contact us by letter, FAX, or telephone.

### Safety Precautions:

This User's manual describes safety precautions according to the following level and marks of warning.

Warning mark	Mark to Prohibit	Procedures
		
<b>Warning    Caution</b>	<b>Actions Prohibited</b>	<b>Disconnect the power plug</b>



**【Warning】**

This precaution must be followed, or it could cause of fire or electric shock which could result in serious injuries or death.



**【Caution】**

This precaution must be followed, or it may cause of electric shock and/or any other accidents which may result in injuries and/or partial damage of the products or surrounding equipment.

- Unauthorized reproduction of this document, in whole or in part, is strictly prohibited.
- Modifications to the contents of this document for improvements or revisions may be made without prior notification.
- Product liability is limited within the country of original purchase.

## Table of Contents

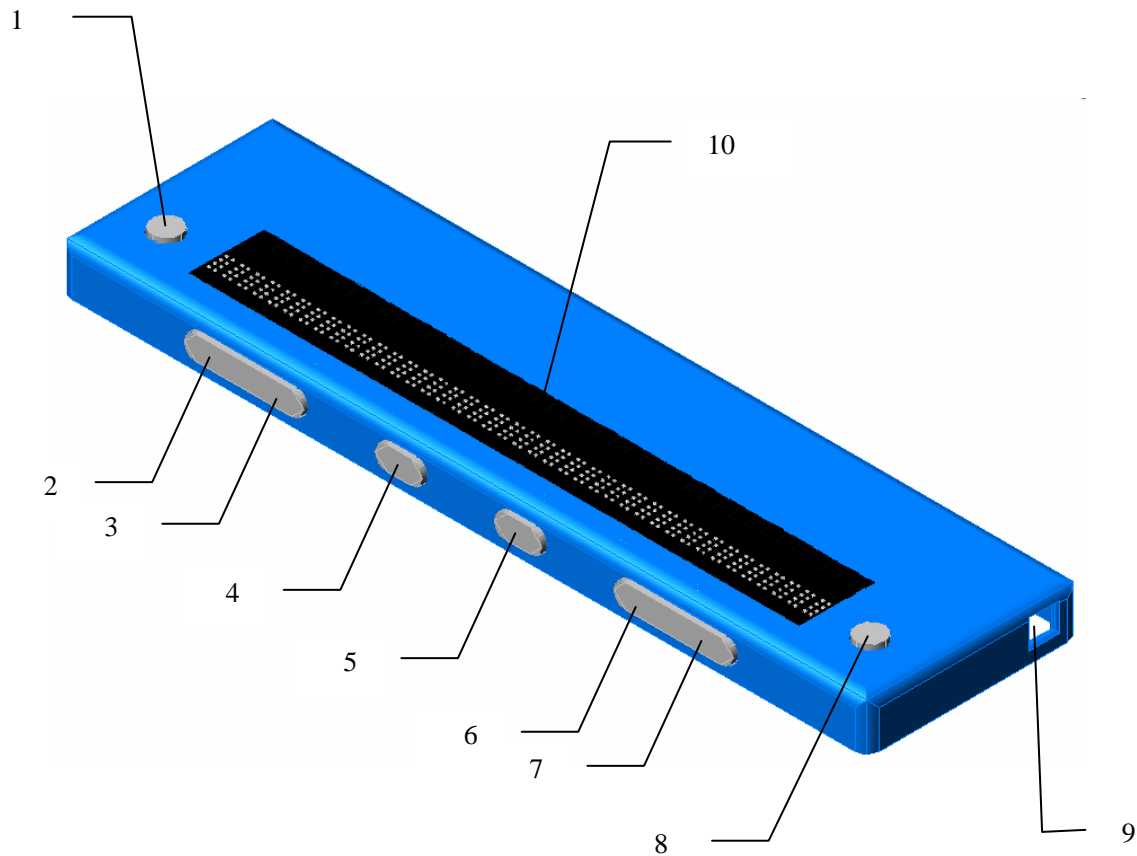
<b>Chapter 1 - Overview of the Trans Braille 40 .....</b>	<b>1</b>
1. Name and Functions of All Components.....	1
1.1 Full View Illustration of the Product .....	1
1.2 Illustration of Left View .....	3
2. Alarms .....	3
3. Sleep mode.....	3
<b>Chapter 2 - Setup .....</b>	<b>4</b>
1. Service Precautions (at setup time).....	4
2. Installation Space .....	4
3. Operating Environment.....	5
4. Precautions for Moving .....	5
<b>Chapter 3 - Installing the Trans Braille 40 for Window-Eyes 6.x or Higher .....</b>	<b>6</b>
1. Installing Seika Braille display setup(Window 2000 / XP /Vista) .....	6
2. Controls functions .....	7
3. Remark.....	8
<b>Chapter 4 - Installing the Trans Braille 40 for JAWS .....</b>	<b>9</b>
1. Installing Seika Braille display setup(Window 2000 / XP /Vista) .....	9
2. Configuring the software.....	9
3. Working in JAWS.....	10
3.1 Configuring JAWS.....	10
3.2 Controls functions.....	13
<b>Chapter 5 - Installing the Trans Braille 40 for HAL.....</b>	<b>15</b>
1. Installing Seika Braille display setup(Window 2000 / XP /Vista) .....	15
2. Configuring the software.....	15
3. Working in HAL .....	16
3.1 Configuring HAL.....	16
3.2 Controls functions.....	19
<b>Chapter 6 - Installing the Trans Braille 40 for Virgo.....</b>	<b>21</b>
1. Installing Seika Braille display setup(Window 2000 / XP /Vista) .....	21
2. Configuring the software.....	21
3. Working in Virgo.....	22
3.1 Configuring Virgo.....	22
3.2 Controls functions.....	23
<b>Chapter 7 - Display Specifications .....</b>	<b>25</b>
<b>APPENDIX.....</b>	<b>26</b>
1. How to verify which Virtual COM port has been used by Trans Braille 40 .....	26
2. How to uninstall the Braille display drive.....	26



## Chapter 1 - Overview of the Trans Braille 40

### 1. Name and Functions of All Components

#### 1.1 Full View Illustration of the Product



1~8---Navigation and Control Keys    9---USB Interface    10---Display

#### **Trans Braille 40, Seika Braille Display's size:**

13.3(W) x 3.5(D) x 0.8(H) inches and weight: 0.5 kg

## Display

This is a Braille display, which is compatible with an 8-pin Braille hardware. It is possible to display 40 cells.

## Cell Position Mark

It marks the cell position. There is a position mark per 5 cells. From left to right it means the 1st, 5th, 10th, 15th, 20th, 25th, 30th, 35th, 40th cell.

## Controls Description

To follow this description, place the Trans Braille 40 on a flat surface with the Braille display facing upwards and the buttons facing towards you.

If you want to know functions of these controls , please see the Controls functions section in the Chapter of the screen reader which you use .

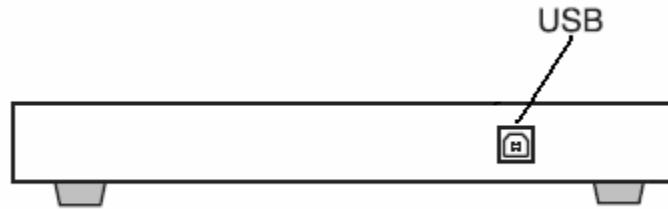
Top surface controls are located on the top of the Trans Braille 40.

- Near each end of the Braille display and slightly to the rear is a tiny button which is CURSOR ROUTING BUTTONS. These tiny buttons are used to move the computer's cursor directly to a particular location on the screen. The LEFT BUTTON is to the left of the Braille display and the RIGHT BUTTON is to the right of the Braille display.

Front panel navigation and control keys are located on the front edge, facing the user.

- On the left half of the front panel is the LEFT CTRL which contains LEFT CTRL LEFT and LEFT CTRL RIGHT.
- In the middle of the front panel are two buttons. The LEFT SHIFT is toward the left and the RIGHT SHIFT is toward the right.
- On the right half of the front panel is the RIGHT CTRL which contains RIGHT CTRL LEFT and RIGHT CTRL RIGHT.

## 1.2 Illustration of Left View



### USB Communications Connector

This is the USB communications connector. There is no need for an electrical cable since the Braille display will be attached to the PC.



**【Caution】** : When a laptop computer is used for operating the braille display, please make sure that the PC is supplied with power via the electrical cable not by battery. Otherwise it may cause a deficiency in the power supply.

## 2. Alarms

### Connecting Alarms

When the Braille display is connected with the PC, two short beeps will be heard.

## 3. Sleep mode

Braille display will enter the sleep mode if there is not any operation within 3 minutes.



## Chapter 2 - Setup

### 1. Service Precautions (at setup time)



**【Prohibited】** : Avoid use of the display in the following areas they may because for malfunctions:

- Direct sunlight, near air conditioners or outside.
- High humidity, such as those near a water supply or humidifier, or any place with water, oil, or chemicals.
- Avoid contact with dust, waste particles, near open windows, or locations with any toxic gases or iron powder.

Also, do not install the display near any televisions, radios, speakers, short-wave radios, or anything that is magnetic or emits radio waves. If you use it adjacent to any of these items, it can interfere with reception.

### 2. Installation Space



**【Caution】** : Install the product in a location which meets the following criteria:

- The product must be installed on a level surface.
- It is recommended to avoid put anything heavier than a keyboard or a laptop computer or similar on top of the device as it may cause malfunction.

### 3. Operating Environment

- Temperature: 41 – 95 °F (5 – 35 °C)
- Humidity: 20 - 80% (no condensation)

### 4. Precautions for Moving



#### 【Warning】

- Violent shaking or vibrations at the time of moving may cause product failures.



#### 【Requirement】

- Turn the power off the PC which is connected with this equipment, and disconnect the USB cable, then move the equipment.

## Chapter 3 - Installing the Trans Braille 40 for Window-Eyes 6.x or Higher

### 1. Installing Seika Braille display setup(Window 2000 / XP /Vista)

To use your Trans Braille 40 with Window-Eyes you need to install Seika Braille display setup and the setup program will automatically configure Window-Eyes.

Make sure your Trans Braille 40 is not connected to your computer and follow the instruction below.

- Place the CD into the CD driver, "Seika Braille display setup.exe" will be executed automatically.
- Select "Begin".
- Select "Install" to install Seika Braille display driver.
- When you are prompted "Installation Successful" , press ENTER.
- You will be asked to connect your Trans Braille 40 to your computer .Please connect Trans Braille 40 to your computer.
- You will be asked to close your Window-Eyes .Please close Window-Eyes . Then you will hear sound prompts and Window-Eyes will be updated automatically .
- When you are prompted "Congratulations ! Seika Braille display setup has been completed successfully . Restart your Window-Eyes", please press ENTER to finish setup.

Now you can use your Trans Braille 40 with Window-Eyes.

## 2. Controls functions

<b>Description</b>	<b>Command</b>
Scroll Braille Left	Left Button
Scroll Braille Right	Right Button
Prior Braille Line	Left Ctrl Left
Next Braille Line	Left Ctrl Right
Top Line	Right Ctrl Left
Bottom Line	Right Ctrl Right
Mouse Top Left	Left Button + Left Ctrl Left
Mouse Bottom Left	Left Button + Left Ctrl Right
Mouse Top Right	Right Ctrl Left + Right Button
Mouse bottom right	Right Ctrl Right + Right Button
To Focus	Left Button + Right Button
Grade 2 Braille Toggle	Left Shift + Right Shift
Untranslate At Cursor	Left Shift + Right Ctrl Left
Untranslate At Mouse	Left Shift + Right Ctrl Right
Scroll Mode Toggle	Left Ctrl Left + Right Ctrl Left
Spacing Toggle	Left Ctrl Right + Right Ctrl Right
Attributes To Show Rotor	Left Ctrl Left + Right Shift
Show Attributes Toggle	Left Ctrl Right + Right Shift
Quick Message Rotor	Left Ctrl Right + Right Ctrl Left
Display Individual Attribute Rotor	Left Ctrl Left + Left Shift
Braille graphic mode	Left Ctrl Right + Left Shift
Toggle 6/8 Braille	Right Shift
Braille tracking toggle	Left Shift

### 3. Remark

If you are prompted “ERROR!” in the process of the installation of Seika Braille display setup.exe or Trans Braille 40 doesn't work , please configure your Window-Eyes manually and follow the instruction below:

- Place the CD into the CD driver, “Seika Braille display setup.exe” will be executed automatically.
- Select “Read Virtual COM Port”.
- You will be prompted which Virtual COM Port has been used by Trans Braille 40. Please remember it which will be used when configuring your Window-Eyes.
- For Window-Eyes 6.x :  
Copy “CD-ROM:\update\ WindowEyes6\braille.ini” to  
“c:\WINEYES\User\default” or ”c:\WINEYES\User\*YourFile*”  
For Window-Eyes 7.x :  
Copy “CD-ROM:\update\ WindowEyes7\ braille.ini” to “c:\Program files\  
GW.Micro \Window-Eyes \user\default ”or  
“c:\Program files\ GW.Micro \Window-Eyes \user\*YourFile* ”
- Restart your Window-Eyes.
- Select File, then select Braille Display
- Select Seika Display
- Select COM Port which you remembered.
- Select OK button.

## Chapter 4 - Installing the Trans Braille 40 for JAWS

### 1. Installing Seika Braille display setup(Window 2000 / XP /Vista)

To use your Trans Braille 40 with JAWS , you need to install Seika Braille display setup and configure your JAWS. Make sure your Trans Braille 40 is not connected to your computer and no screen reader installed except JAWS, then follow the instruction below.

- Place the CD into the CD driver, “Seika Braille display setup.exe” will be executed automatically.
- Select “Begin”.
- Select “Install” to install Seika Braille display driver.
- When you are prompted “Installation Successful” , press ENTER.
- You will be asked to connect your Trans Braille 40 to your computer .Please connect Trans Braille 40 to your computer
- You will be told which Virtual COM Port has been used by Trans Braille 40. Please remember it which will be used when configuring your JAWS , then press ENTER.
- When you are prompted ”Congratulations ! Seika Braille display setup has been completed successfully .”,please press ENTER to finish setup.

### 2. Configuring the software

The Trans Braille 40 is operated with “Power Braille 40” compatibility mode. Please setup the screen reader or Braille editing software as follows:

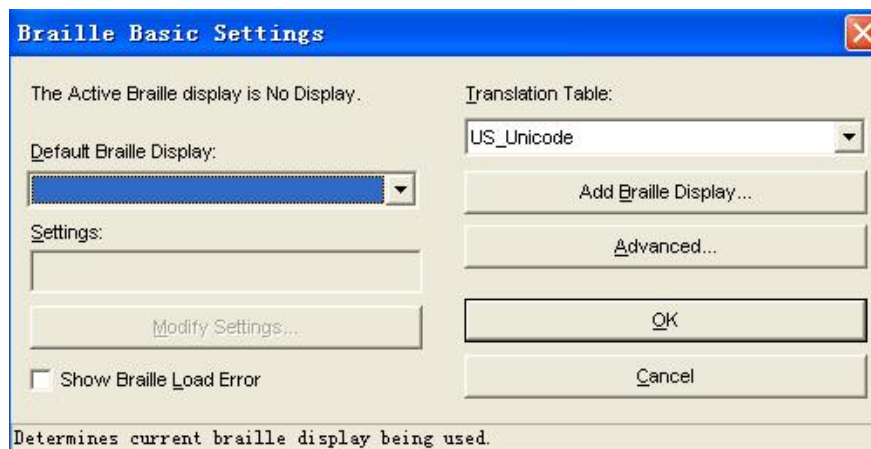
Braille Display	Power Braille 40
-----------------	------------------

### 3. Working in JAWS

#### 3.1 Configuring JAWS

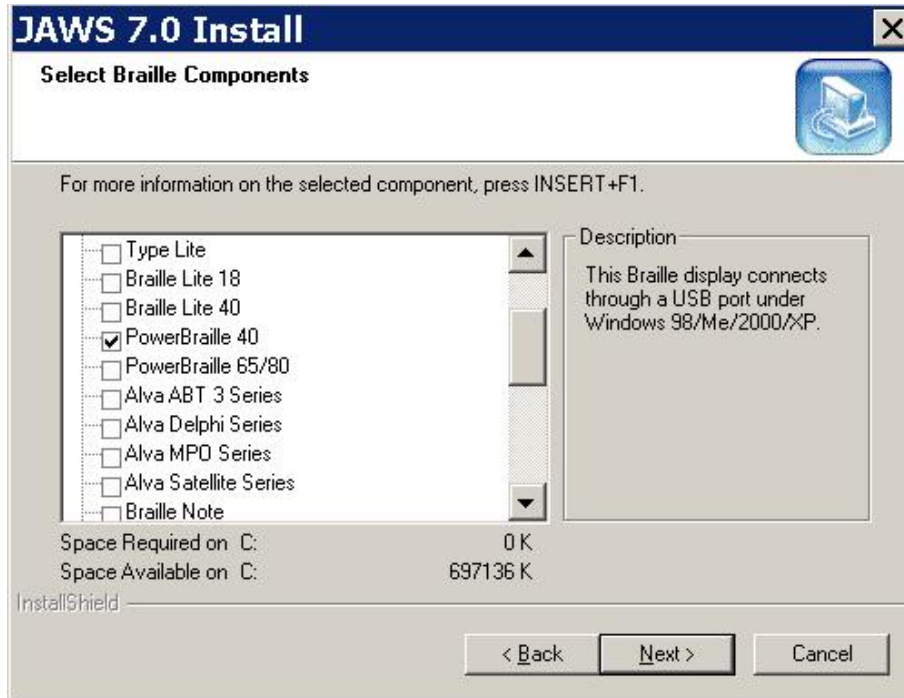
The Braille display is not recognized by JAWS. Therefore, you need to set the default display to Power Braille 40. To do this:

- Connect the Seika display.
- In JAWS, open the “Braille basic settings” dialog box from within the “options” menu.



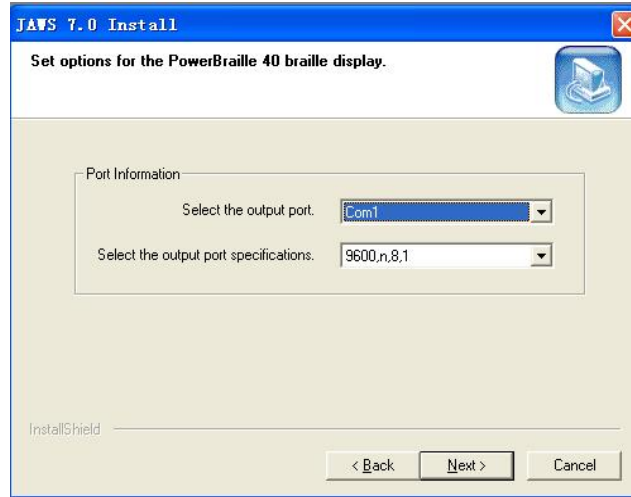
- Assuming that the active Braille display, and the default Braille display are both set to “No display”, tab to the “add Braille Display” button and press enter.

- The JAWS install wizard will open. You will see a list of Braille displays (or Braille Components). Select the Power Braille 40 by pressing the space bar.

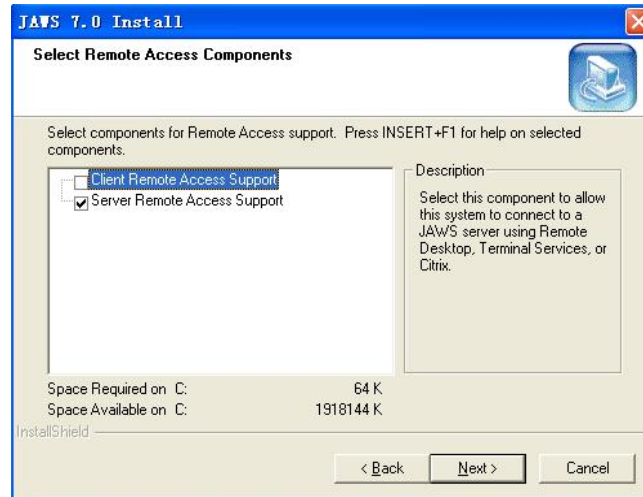


- Tab to the “Next” button and press enter.
- Select the Power Braille 40 as the default display.
- Tab to the “Next” button and press enter.
- You will be prompted to set the output port. Choose the COM Port which you have been told by Seika Braille display setup.



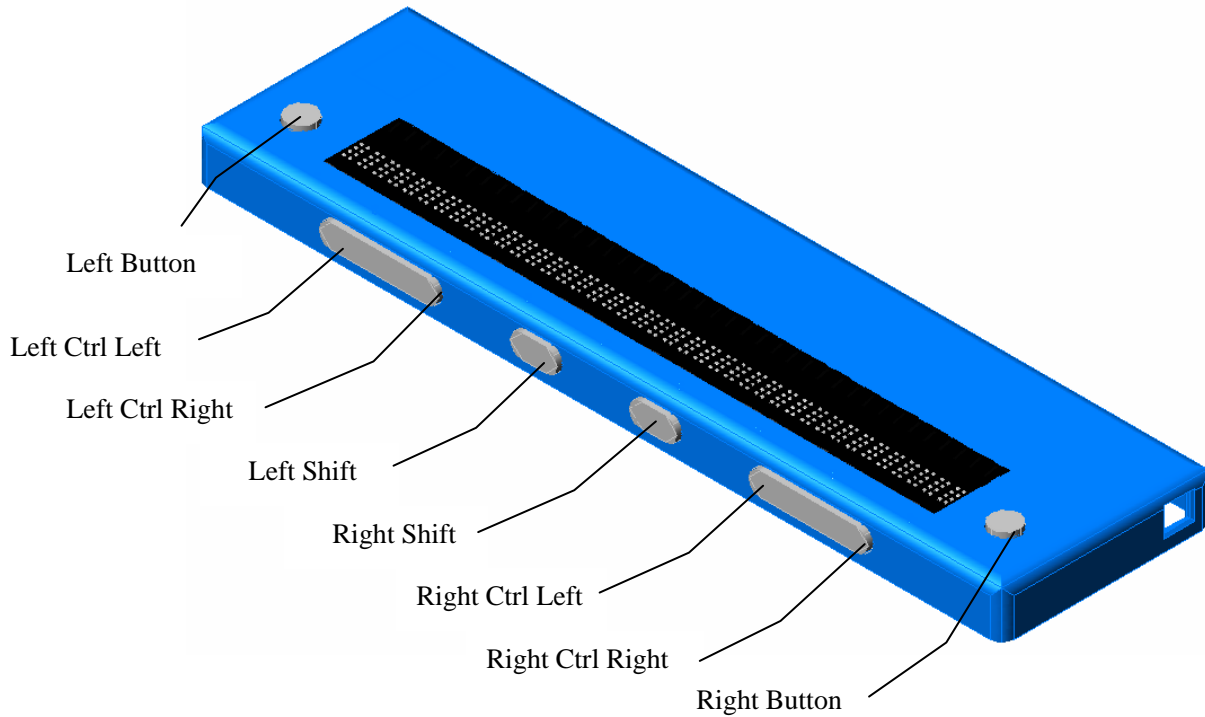


- Tab to the “Next” button .
- You will be prompted to set Remote Access Components. Ignore this and tab to the “Next” button and press enter.



- You will be prompted to select the Sentinel System Driver for dongle support. Ignore this and tab to the “Next” button and press enter.
- Press the “Finish” button.
- Restart your JAWS

### 3.2 Controls functions



#### Braille Commands:

Description	Command
Braille Mode Toggle	Left Button + Right Button
Attribute/Character mode toggle	Left Ctrl Left + Right Ctrl Left
Attribute Marking Dialog	Left Ctrl Left + Left Shift
Attribute Marking Off	Left Button + Left Ctrl Left + Left Shift
Braille Marking Off	Left Button + Left Ctrl Left + Left Shift
8-Dot/6-Dot Toggle	Right Shift + Left Shift + Right Ctrl Right
8 Pixels/Unlimited Pixels Per Space	Left Shift + Right Shift + Right Ctrl Left
Repeat Last Flash Message	Left Ctrl Left + Right Ctrl Right

**Navigation Commands:**

<b>Description</b>	<b>Command</b>
Auto Advance Mode	Left Ctrl Right + Right Ctrl Left
Increase Auto Advance Speed	Left Button + Right Shift
Decrease Auto Advance Speed	Left Button + Left Shift
Top Of Window	Left Ctrl Left
Bottom Of Window	Left Ctrl Right
Pan Left	Left Button
Pan Right	Right Button
Braille Next Line	Right Ctrl Left
Braille Prior Line	Right Ctrl Right
PAGE DOWN (Active Cursor)	Left Ctrl Right + Right Shift
PAGE UP (Active Cursor)	Left Ctrl Left + Right Shift
TAB	Left Shift + Right Ctrl Left
CTRL+TAB	Left Ctrl Right + Right Button
SHIFT+TAB	Left Shift + Right Ctrl Right
CTRL+SHIFT+TAB	Left Ctrl Left + Right Button

**Cursor Commands:**

<b>Description</b>	<b>Command</b>
Braille follows Active	Left Shift
Active follows Braille	Left Shift + Right Shift
Route Braille To Active	Right Shift
JAWS Cursor	Right Button + Right Ctrl Left
Mouse Button Right Click	Left Shift + Right Button
PC Cursor	Right Button + Right Ctrl Right
Route JAWS to PC Cursor	Right Shift + Right Ctrl Right
Route PC to JAWS Cursor	Right Shift + Right Ctrl Left
Select Text	Any Cursor Routing Button + Right Shift

## Chapter 5 - Installing the Trans Braille 40 for HAL

### 1. Installing Seika Braille display setup(Window 2000 / XP /Vista)

To use your Trans Braille 40 with HAL , you need to install Seika Braille display setup and configure your HAL. Make sure your Trans Braille 40 is not connected to your computer and no screen reader installed except HAL , then follow the instruction below.

- Place the CD into the CD driver, “Seika Braille display setup.exe” will be executed automatically.
- Select “Begin”.
- Select “Install” to install Seika Braille display driver.
- When you are prompted “Installation Successful” , press ENTER.
- You will be asked to connect your Trans Braille 40 to your computer .Please connect Trans Braille 40 to your computer
- You will be told which Virtual COM Port has been used by Trans Braille 40. Please remember it which will be used when configuring your HAL , then press ENTER.
- When you are prompted ”Congratulations ! Seika Braille display setup has been completed successfully .”,please press ENTER to finish setup.

### 2. Configuring the software

The Trans Braille 40 is operated with “Power Braille 40” compatibility mode. Please setup the screen reader or Braille editing software as follows:

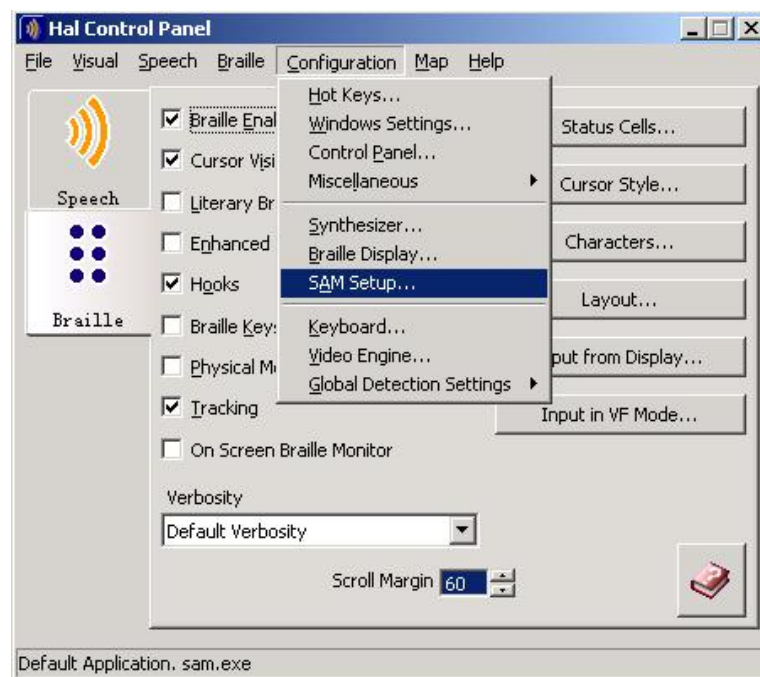
Braille Display	Power Braille 40
-----------------	------------------

### 3. Working in HAL

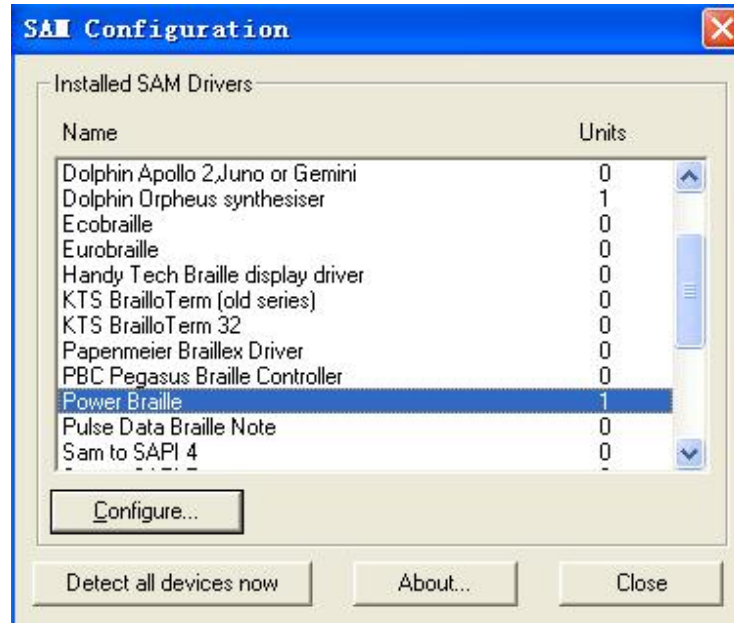
#### 3.1 Configuring HAL

The Braille display is not recognized by HAL. Therefore, you need to set the default display to Power Braille 40. To do this:

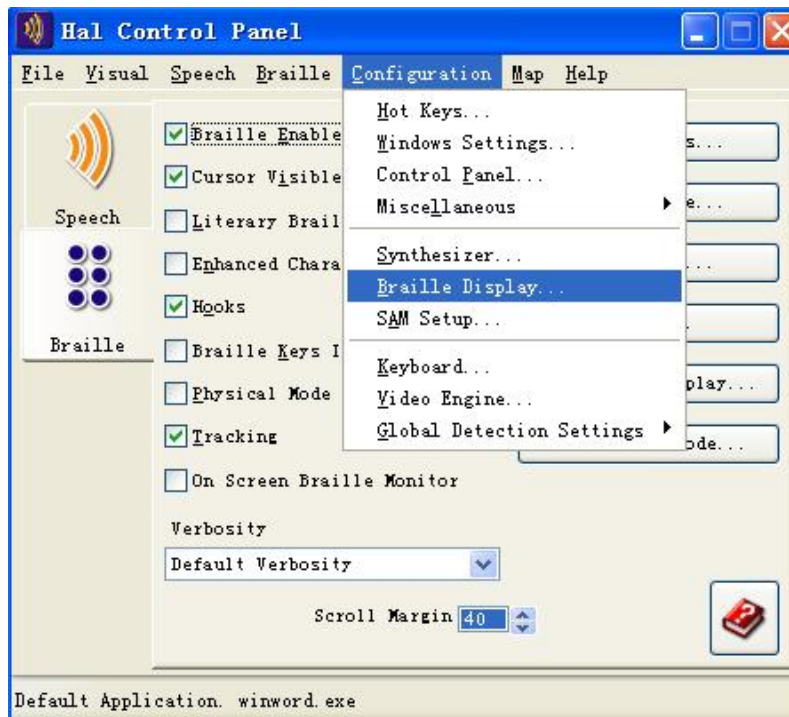
- Connect the Seika display.
- Run HAL.
- Open the HAL Control Panel Window.
- Select Configuration.



- Select SAM Set UP.
- Select “Detect All Devices now”.



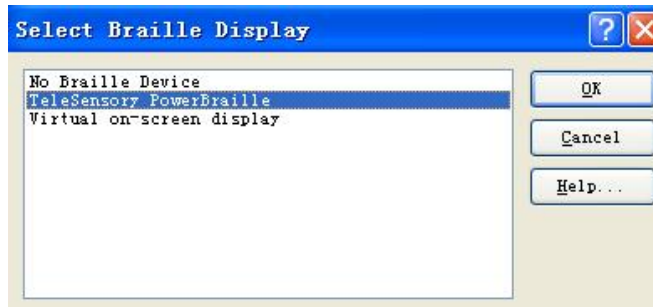
- HAL will automatically detect the Seika.
- Return to the HAL Control Panel Window.
- Select “Braille Display”.



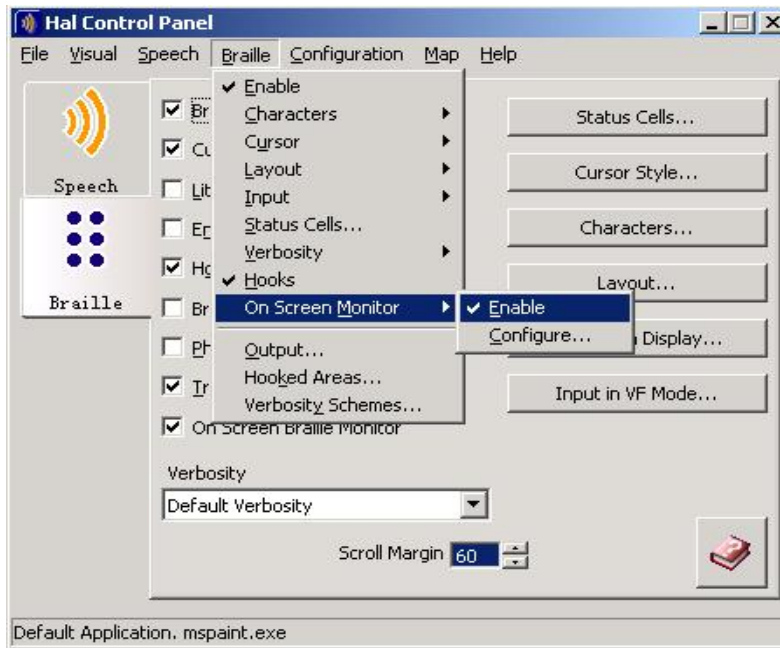
- Click “Braille Display”.



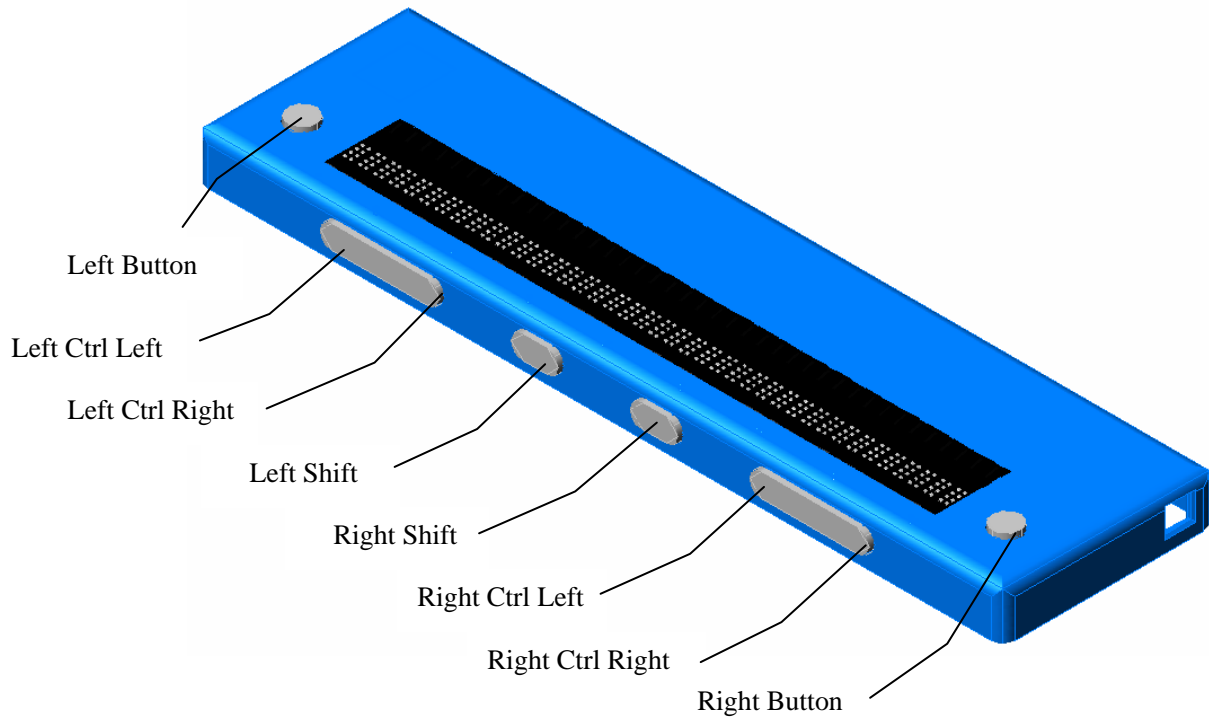
- Select from the list TeleSensory PowerBraille.



- Return to HAL Control Panel.
- Ensure that the On Screen Monitor is enabled.
- Restart your HAL.



### 3.2 Controls functions



#### Action

Action Open Control Panel  
 Speak Keys Where am I?  
 Braille Back  
 Braille Forward  
 Braille Line up  
 Virtual Focus Move Physical Up  
 Braille Line down  
 Virtual Focus Move Physical Down  
 Braille Go To Focus

#### Key press

Left Button + Right Button  
 Left Shift + Right Shift  
 Right Ctrl Right  
 Right Ctrl Left  
 Left Ctrl Left  
 Left Ctrl Left  
 Left Ctrl Right  
 Left Ctrl Right  
 Left Shift



Braille Line Start	Left Button + Right Ctrl Right
Braille Line End	Left Button + Right Ctrl Left
Braille Top	Left Ctrl Left + Right Ctrl Right
Braille Bottom	Left Ctrl Right + Right Ctrl Left
Braille Cell Left	Right Ctrl Right + Right Button
Braille Cell Right	Right Ctrl Left + Right Button
Braille Toggle Physical/Logical Mode	Left Button + Left Ctrl Left
Virtual Focus Physical on off	Left Button + Left Ctrl Left
Braille Toggle Literary Braille on off	Left Button + Left Shift
Braille Cycle Attributes	Left Ctrl Left + Right Button
Braille Toggle Describe Character on off	Left Shift + Right Button
Braille Hooks on off	Left Button + Right Shift
Braille Toggle tracking on off	Right Shift
Braille Enhance on off	Left Ctrl Right + Right Button
Braille Toggle Show Layout	Left Button + Left Ctrl Right
Simulate Key Press Up	Left Ctrl Left + Left Shift
Virtual Focus Previous Line	Left Ctrl Left + Left Shift
Simulate Key Press Down	Left Ctrl Right + Left Shift
Virtual Focus Next Line	Left Ctrl Right + Left Shift
Simulate Key Press Enter	Left Ctrl Right + Right Shift
Virtual Focus Interact with control	Left Ctrl Right + Right Shift
Simulate Key Press Tab	Right Button
Virtual Focus Next Object	Right Button
Simulate Key Press Shift Tab	Left Button
Virtual Focus Previous Object	Left Button
Simulate Key Press Escape	Left Ctrl Left + Right Shift
Simulate Key Press Windows	Right Shift + Right Ctrl Left
Simulate Key Press Alt	Right Shift + Right Ctrl Right

## Chapter 6 - Installing the Trans Braille 40 for Virgo

### 1. Installing Seika Braille display setup(Window 2000 / XP /Vista)

To use your Trans Braille 40 with Virgo , you need to install Seika Braille display setup and configure your Virgo. Make sure your Trans Braille 40 is not connected to your computer and no screen reader installed except Virgo, then follow the instruction below.

- Place the CD into the CD driver, “Seika Braille display setup.exe” will be executed automatically.
- Select “Begin”.
- Select “Install” to install Seika Braille display driver.
- When you are prompted “Installation Successful” , press ENTER.
- You will be asked to connect your Trans Braille 40 to your computer .Please connect Trans Braille 40 to your computer
- You will be told which Virtual COM Port has been used by Trans Braille 40. Please remember it which will be used when configuring your Virgo , then press ENTER.
- When you are prompted ”Congratulations ! Seika Braille display setup has been completed successfully .”,please press ENTER to finish setup.

### 2. Configuring the software

The Trans Braille 40 is operated with “Power Braille 40” compatibility mode. Please setup the screen reader or Braille editing software as follows:

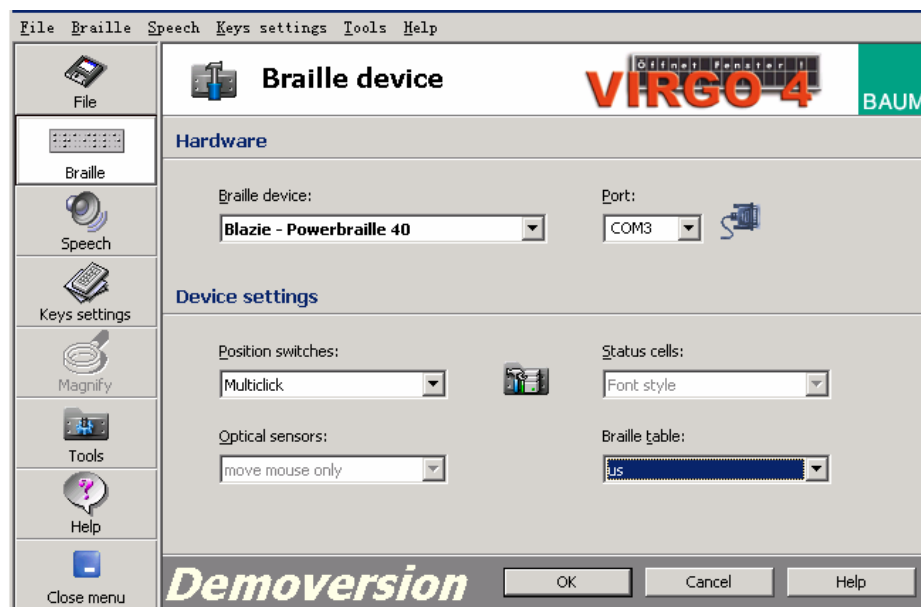
Braille Display	Power Braille 40
-----------------	------------------

### 3. Working in Virgo

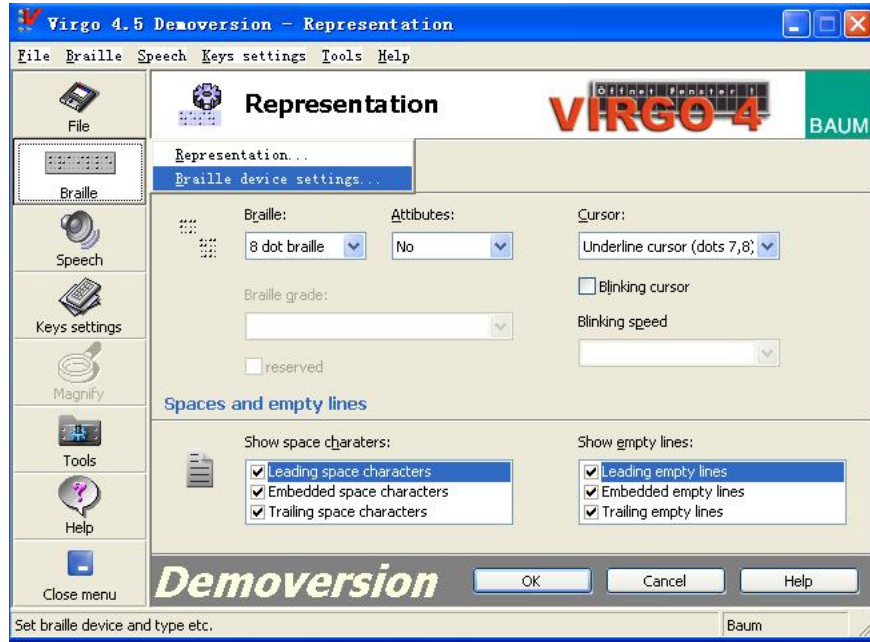
#### 3.1 Configuring Virgo

The Braille display is not recognized by Virgo. Therefore, you need to set the default display to Power Braille 40. To do this:

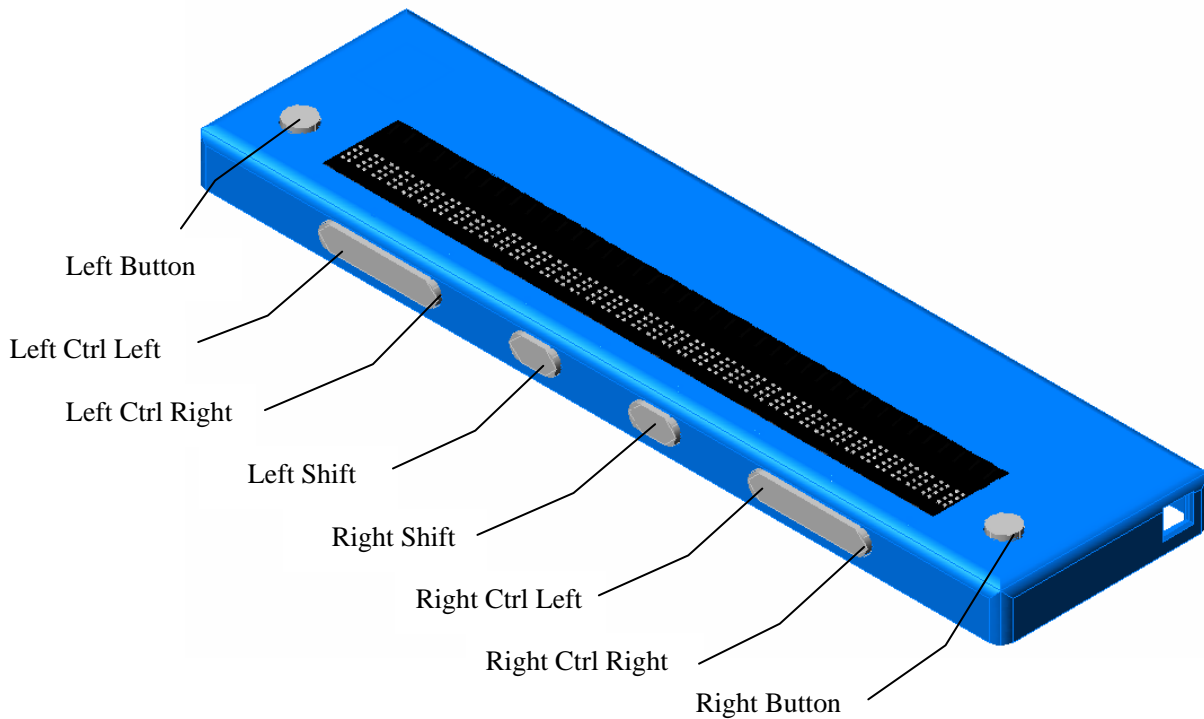
- Connect the Seika display.
- Run Virgo main screen.
- In Virgo, open the “REPRESENTATION...” dialog box from within the “Braille” menu.



- Open the “Braille device setting” dialog box from within the “Braille” menu.
- Restart your Virgo.



### 3.2 Controls functions



<b>Action</b>	<b>Key press</b>
Scroll left	Left Button
Move navigation to focus	Left Button + Right Button
Configure speech output	Left Button + Right Ctrl Right + Right Button
Scroll right	Right Button
Previous item or up screen	Left Ctrl Left
Move mouse pointer to navigation	Left Button + Left Ctrl Left
Window specific help	Left Button + Left Ctrl Left + Right Button
Move navigation to the top	Left Ctrl Left + Right Ctrl Right
Speech output on/off	Left Ctrl Left + Right Ctrl Left
Next item or down screen	Left Ctrl Right
Show Virgo menu	Left Ctrl Right + Right Ctrl Right
Move navigation to the bottom	Left Ctrl Right + Right Ctrl Left
Single left virgo click (mouse click)	Left Shift
Single right virgo click (mouse click)	Right Shift
Move up hierarchy	Right Ctrl Right
Move navigation to mouse pointer	Right Ctrl Right + Right Button
Move down hierarchy	Right Ctrl Left

## Chapter 7 - Display Specifications

Display system	8 dots Braille
Display capacity	40 cells
Cursor key	8 Control keys
Touch cursor key	40 keys
Character code	original code
Interface	USB
Power supply	bus power
Size	13.3(W) x 3.5(D) x 0.8 (H)inches
Weight	0.5kg

## APPENDIX

### 1. How to verify which Virtual COM port has been used by Trans Braille 40

- Place the CD into the CD driver, “Seika Braille display setup.exe” will be executed automatically.
- Select “Read Virtual COM Port”.
- You will be prompted which Virtual COM Port has been used by Trans Braille 40.
- Press ENTER to back.

### 2. How to uninstall the Braille display drive

- Launch the Windows Control Panel.
- Select “Add/Remove Programs” and press enter.
- Remove the Braille display driver “CP210x USB to UART Bridge Controller”.
- Delete the folder in “C:\Program Files\Silabs” .