

TABLE OF CONTENTS

Product Introduction	2
Product Functionality.....	2
Main Features	2
Main Components	3
Indications and Contraindications	5
Use Directions	6
How to Use the Wire Remote Controller	6
How to Use the Product.....	6
Tightness Adjustment	7
PRODUCT PRECAUTIONS AND MAINTENANCE.....	8
Safety Notice.....	8
Code Information.....	9
Confirmation before Applying for the After-sale Service	9
PRODUCT INSTALLATION	10
Installation Precautions	10
Product Installation.....	10
PRODUCT CERTIFICATES AND SPECIFICATIONS.....	11
Troubleshooting & Service	11
Product Specifications	11
ADDITIONAL INFORMATION	12
Product Programs Diagram.....	12
Working Diagram	13

PRODUCT INTRODUCTION

Product Functionality

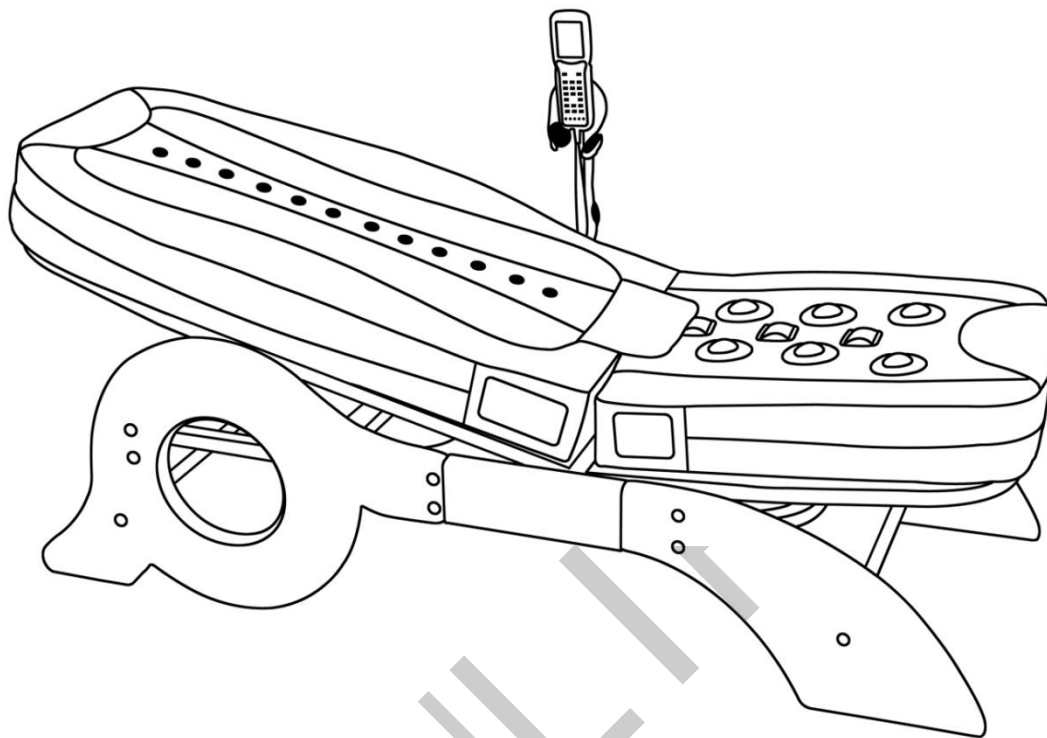
The product (Thermal Jade Massage Bed) is approved by Chinese SFDA (State Food and Drug Administration) as a medical instrument for the use in physical therapy and physical recover. It is a method of instrument therapy through the infrared ray, heat and movement treatment and it offers the combined therapeutic benefits of acupressure, chiropractic and far-infrared heat with premium jade rollers. It can relieve the stress and tension in the muscles, improve the blood circulation and increase energy.

Main Features

1. New 3D remote controller
2. Automatic elevation system for both the back part and the leg part and can be adjusted to 0~45°
3. MP3 + Earphone + USB plug
4. "S" track + 7 groups of jade rollers
5. Far-infrared carbon fiber heated board
6. The leg projector: vibration + carbon board
7. One foldable handle heater (5 jade balls & 15 jade balls which can be folded) can be used on the desired part or other unreachable part of your body
8. Full-body jade massage bed, from head to toe
9. 7 kinds of massage programs. 6 kinds of automatic modes and 1 kind of manual model available
10. Heating temperature from 40-70°C, providing heat to the painful part of the back effectively

Main Components

Product Drawing



Remote Controller



Indications and Contraindications

1. Product Indications

Use as supplementary instrument treatment for lumbar spondylosis (chronically strain of lumbar muscles, slipped lumbar disc, back pain etc.) and cervical spine problems. It offers the combined therapeutic benefits of lumbar spondylosis, chronic lumbar strain, protrusion of intervertebral disc, backache, etc.

2. Product Contraindications

People with following illness are strictly prohibited to use the product: pregnancy, Tumor, severe osteoporosis, severe high blood pressure, acute suppurative inflammation, hemorrhagic tendency, artificial cardiac pacemaker, bone fracture, hypersensitive to electricity heat.

3. Precautions

- (1). Cotton clothe is recommended during therapy. Please remove the belt and tie before therapy.
- (2). Please place cover over the external projectors to avoid direct contact with skin (in case of excessive heat).
- (3). Please do not place external projectors directly over your face to avoid the contact with eyes.
- (4). If you are sensitive to heat, please lower the temperature before using the product.
- (5). Please follow the instructions and do not use other products while using this product.
- (6). Please do not fall to sleep during the therapy.
- (7). This therapy can't replace any other medical treatments or surgeries suggested or prescribed by your doctor for curing/healing purpose.

4. Inspection before Using the Product

- (1). Make sure your power cable is plugged in the power jack.
- (2). Check if the external projectors are plugged in properly with the bed.
- (3). Check if the power switch and remote controller work normally.
- (4). Check if all the lamps are working normally.
- (5). Check if the temperature display is correct on the remote controller.
- (6). Please make sure the projectors temperature is around 45°C ~55°C.
- (7). Check if there is any abnormality about the projectors.

5. Inspection after using the product

- (1). Check if the temperature display is turned off.
- (2). Check if all lamps are shut off.
- (3). Check if the power switch is at off position.
- (4). Check if the power cable is unplugged from power jack.

USE DIRECTIONS

How to Use the Wire Remote Controller

(1) Press On/Off, the back projector and the handheld projector start preheating for 10 minutes with the temperature showed on the controller window. (If you do not press AUTO button in 10 minutes, the power will turn off automatically), at the same time, the automatic elevation mechanism and MP3 start working. Press On/Off again, the power will be turned off.

(2) During the process of preheating, press AUTO, and the product will work automatically for 40 minutes. (All functional buttons can be available)

1. Back Mode: Press Back Projector to choose the back massage programs with 7 modes (N1→N2→N3→N4→N5→N6→N0). Among the modes, N1→N2→N3→N4→N5→N6 are the automatic modes while N0 is manual one which offers additional treatment on the desired position of the body.

2. Infrared: Press Infrared, and the far infrared ray starts working with heat.

3. Thump: Press Thump, and the knocking function starts working.

4. Vibration: Press Vibration, and the vibration function starts working.

Thump and Vibration can work for 10 minutes per time and can be only available twice within 40 minutes.

5. Temperature Setting: Press “+” and “-” to adjust the temperature of the back projector, the handle heater and the far-infrared ray heating. When setting the temperature for the back projector, the controller window shows the temperature. (The temperature can be adjusted by 5°C per time between 40°C ~70°C)

The ways to set the temperature for the handle heaters and far-infrared ray heating are the same as the back projector.

6. MP3: Plug MP3 to USB Plug, and all the functions can work perfectly.

How to Use the Product

The Therapy Massage Methods

1. Rest the body with the belly up on the massage bed and adjust the angle of the massage mat.
2. Use the AUTO mode and the foldable handheld projector to massage the back, the neck, the arm and the other desired parts.
3. Use the automatic or the manual modes repeatedly to massage the desired part.

The thump (Knocking), Vibration and Therapy Massage Methods

1. Rest the body with the belly up on the massage bed and adjust the angle of the massage mat.
2. Use the AUTO mode and the foldable handheld projector to massage the back, the neck, the arm and other desired parts.
3. Use the Thump and Vibration to knock and vibration the back and the waist with massage.

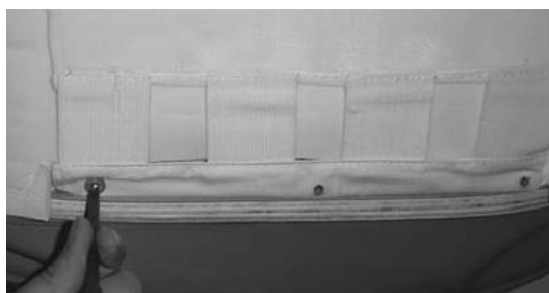
Tightness Adjustment



1. Please locate the zipper at the top end of the leather cover.



2. Open the zipper.



3. Remove all three screws by applying the proper screw driver.



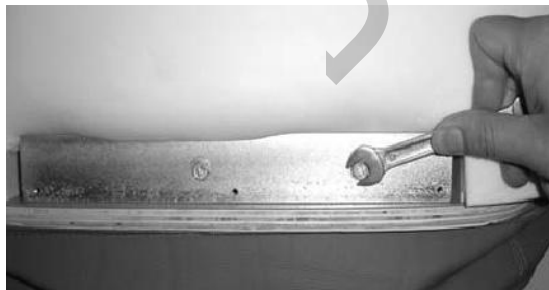
4. Remove the cloth filling as below.



5. User number 10 wrench to adjust the two nuts as seen in the above picture.



6. Use the wrench to turn the left nut 360 degrees in clock wise.



7. Use the wrench to turn right nut 360 degrees in clockwise. The nuts will cause the cable to break over too much tension.

Please not turn the nuts over 540 degree. Over tighten the nuts will cause the cable the cable to break over too much tension.

PRODUCT PRECAUTIONS AND MAINTENANCE

Safety Notice

1. Safety

This product is designed for your maximum comfort and safety, however, improper use may result in fire and electricity shock.

Please make sure your power outlet is AC220V/50Hz before the usage.

Please use the power cable that shipped with the product. Do not use other power cables other than supplied.

Please go to your local store or your service centre to replace the power cable if it is damaged.

Do not overload your power.

2. Usage Notice

Please turn off the power after finishing using the product or when you leave it, and unplug the outlet.

Please do not disassemble the product if you are not the professional maintenance person.

Please stop using the product and call the after-sale department if you hear the abnormal noise during the usage of the product.

Please do not make some mistake about the outlet to avoid the malfunction.

Please do not pull the power cable to avoid the creepage.

Please do not touch the cable if the hands are wet to avoid electric shock.

Please do not use the outlet with other appliances.

Please unplug the outlet when you do not use the product for a long time or in the rainy day.

Code Information

Code	Location	Code Explanation	Solution
OF	Temperature display window	Heater malfunction	Press the button and start the heating
E0	Temperature display window	Temperature transducer malfunction	Change the transducer or the cable connector
E1	Temperature display window	Temperature transducer short circuit	Change the transducer or the main board
E2	Temperature display window	Temperature abnormal	Check the bulbs or the cable connector
E3	Mode display window	Route buttons abnormal	Change route switch or cable connector
N0-N6	Mode display window	Back projector mode	Normal
L0-L1	Mode display window	Leg projector mode	Not available

Confirmation before Applying for the After-sale Service

Problem	Check	Solution
Remote Controller has no or wrong display	If the power cable is plugged in properly	Reconnect the power cable to the outlet
	If the remote controller is plugged in properly	Reconnect the remote controller cable to the outlet
	If the power is turned on	Turn the power switch to "ON" position
	If the fuse is burnt	Replace the fuse
	If press the wrong buttons	Read the user manual
Projectors does not light up	If the power is plugged in and the outlet can work	Do not disassemble the product by yourself but call the after-sale service for maintenance
Internal projector (jade rollers) does not move	Press the remote controller to choose the programs	Turn off the power and restart it again
	No indicator light	Turn off the power and restart it again

PRODUCT INSTALLATION

Installation Precautions

1. Product must be placed on the leveled ground.
2. Please use the product in the clean environment.
3. Please do not place the product near the fire.
4. Please avoid pouring fluid on the product.
5. Do not place the product on the unstable surface.

Product Installation

Decomposition Chart



PRODUCT CERTIFICATES AND SPECIFICATIONS

Troubleshooting & Service

According to the consumer protection law, we offer the quality guarantee for our customers. Please contact our dealers near you or the after-sale service centre if you have any question about our products.

Product Name	Thermal Jade Massage Bed
Model No.	BL-7700
Guarantee Period	1 Year
Customer Name	
TEL/E-mail	
ADD	

Service Charges:

1. under the condition of Non-quality problem (not the problem of the quality but because of the misuse)
2. the misuse caused by the customer
3. consumables parts
4. other (some irresistible factors)
5. if the products are used commercially (keep working for a long time), the guarantee period will be 1 year

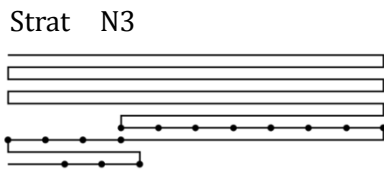
Product Specifications

Product Name	Thermal Jade Massage Bed
Model No.	BL-7700
Rated Voltage	AC 220V / 50Hz
Consumed Power	≤400W
Temperature	40~70°C
Safety Regulation	Class 1-Btype
MEAS	Bed: 130×69×32
	Bed Brace: 130×69×30
N.W/G.W	97kg / 103 kg

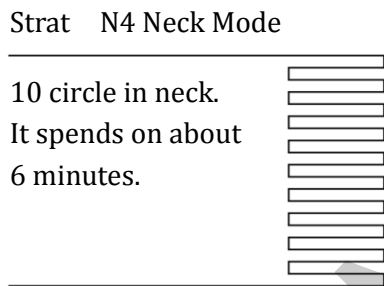
ADDITIONAL INFORMATION

Product Programs Diagram

N3: From waist to neck in 3 circles, then every spot in 2 minutes. It spends about 30 minutes.

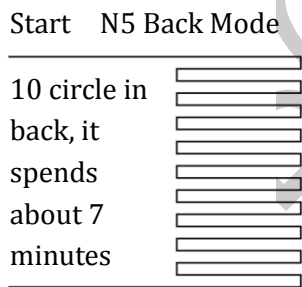


Over Every spot in 2 Mins



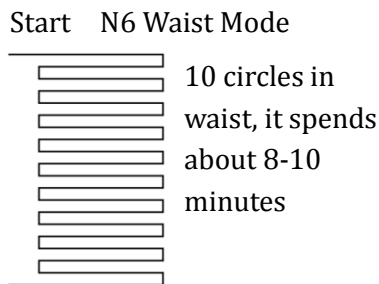
10 circle in neck.
It spends on about
6 minutes.

Over



10 circle in
back, it
spends
about 7
minutes

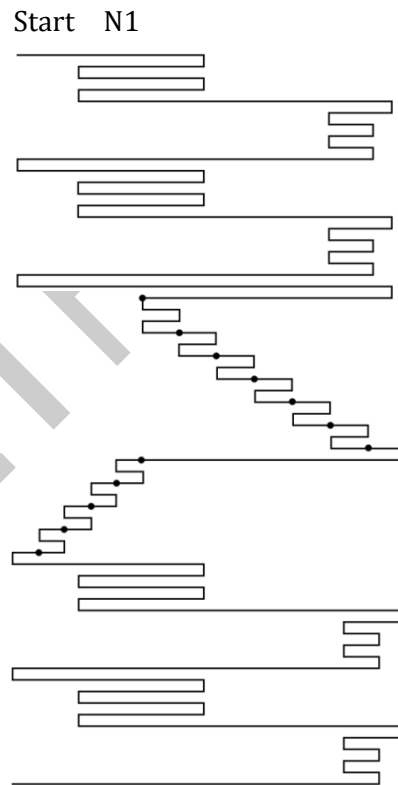
Over



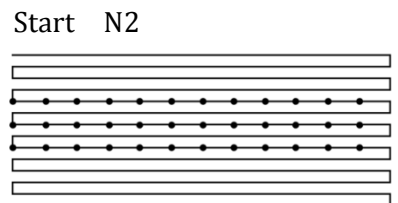
10 circles in
waist, it spends
about 8-10
minutes

Over

N1: From waist to back, from waist to neck, from neck to waist, from waist to back, 4 big circle, every pause in about 80 seconds, again 4 circles. It will spend about 30 minutes.



Over



Over

From waist to neck in 2 circles,
every pause in about 20
seconds, then 2 circles. It
spends about 30 minutes.

Working Diagram

