

Tugicom RF Design

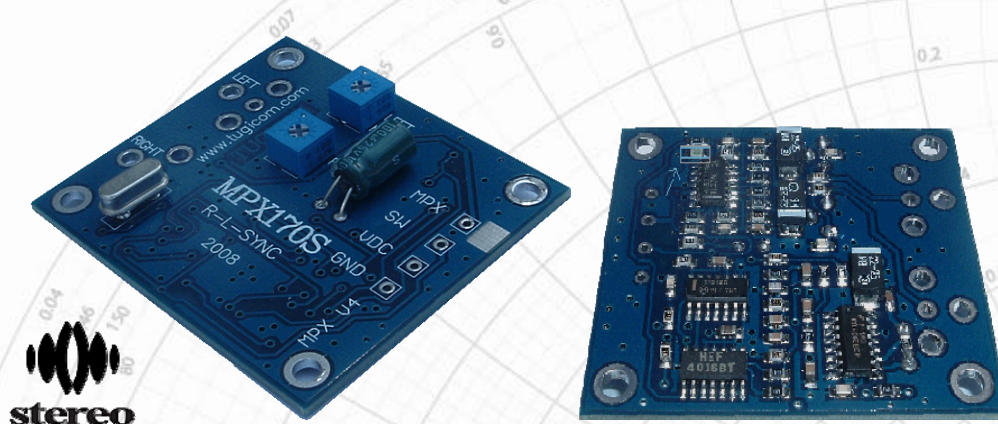
MPX170S Stereo Encoder

User Manual



MPX170S
HIGH QUALITY STEREO ENCODER

MPX170S stereo encoder provides excellent stereo separation while keeping low price, easy of use, and no zero faults. Just connect 12V-15V, audio input from every CD or computer and connect the MPX output to every MPX ready transmitter.



Features

SMD design

Over 40dB separation - Typical 45dB

Operating from every 12-15V regulated voltage

Low Audio Distortion, less than 0.5%

Pilot Tone 19 KHz +/-3Hz

Audio Response 30Hz to 50 KHz +/-0.6dB

Audio Inputs Standard Line Level 0dBu 775mV adjustable

No test equipment required for setting up transmitter

Built & tested - just plug & play!

Compact size: 2" X 2 1/4"

Installing and connecting

1. Install the MPX170S in your transmitter, for good connections to ground please use all screws.
2. Install the MPX170S far from power supply and RF source.
3. Connect DC regulated (DC+) supply to the VDC hole on the board.
4. Connect DC regulated (DC-) supply to the GND hole on the board.
5. Connect shield wire to the MPX170 out and the shield to the ground and the other side to any transmitter MPX input (TX180A).
6. Connect the audio source to the MPX170S RCA connectors.
7. Cancel the Audio pre-emphasis in your transmitter.
8. Before apply operating voltage check the polarity.
Apply operating voltage and adjust the audio level using the trimmers.
9. The MPX170S can be operated in Mono/Stereo modes.
In order to use this option, remove the resistor which marked with blue square on the picture (0 ohm, 000 green smd resistor), after removing the resistor, using SW pin you can control the mode, when SW is open circuit, the transmission will be in mono, when SW is connected to GND the mode will be stereo.

Thank you for purchasing one of our products.
Tugicom RF Design.

Come visit our website for updates and new products: www.tugicom.com