



Platinum<sup>TM</sup>+

SIMRAD<sup>®</sup>

## Platinum+ QuickStart Card For Simrad NSE models:

For a full description of how to display Navionics Platinum+ Chart features in a variety of ways, please refer to your Simrad User's Manual.

Tip: To confirm your selection, either press ✓ key or press rotary knob.

## Getting Started

### To access Navionics on your Simrad unit:

- Insert your Navionics card in the card slot.
- Press CHART direct access key (softkey).
- Press MENU twice.
- Select Chart and press ✓ key.
- Select Chart Data and press ✓ key.
- Select Navionics and press ✓ key.

## Panoramic Photos

### To display a panoramic photo:

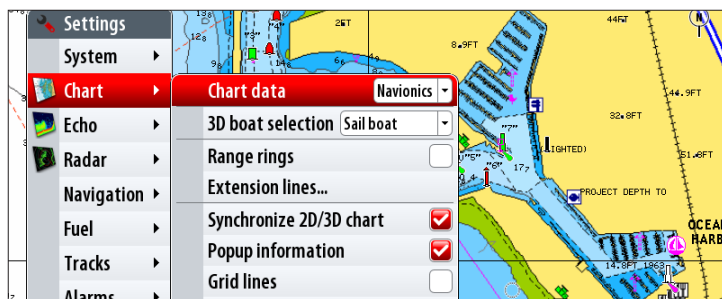
- Place cursor cross-hair over camera symbol.
- Press ✓ to view photo.

NOTE: To view camera symbols, the map screen must be zoomed in to at least the .5nm. The position of the camera symbol indicates the direction in which the photo was taken.

## 3D View

### To display 3D view:

- Press MENU.
- Select Chart Options and press ✓ key.
- Select View and press ✓ key.
- Select 3D and press ✓ key.

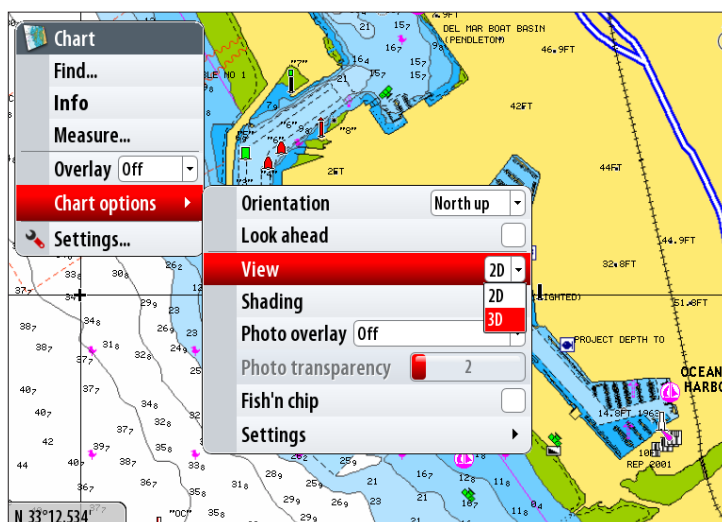


Navionics chart data selection



Panoramic photo symbol

Panoramic photo



Select 3D/2D view

## Shading

### To display map shading:

- Press MENU.
- Select Chart Options and press ✓ key.
- Select Shading and press ✓ key to enable/disable shading.

Note: 3D cartography can be viewed in full screen, split screen, and in a variety of views. Refer to your User's Manual for more information.

## Photo Overlay

### To display Aerial or Satellite Photos:

- Press Menu.
- Select Chart Options and press ✓ key.
- Select Photo Overlay and press ✓ key.
- Select Off, Land only, Land and shallow water, or Full and press ✓ key.

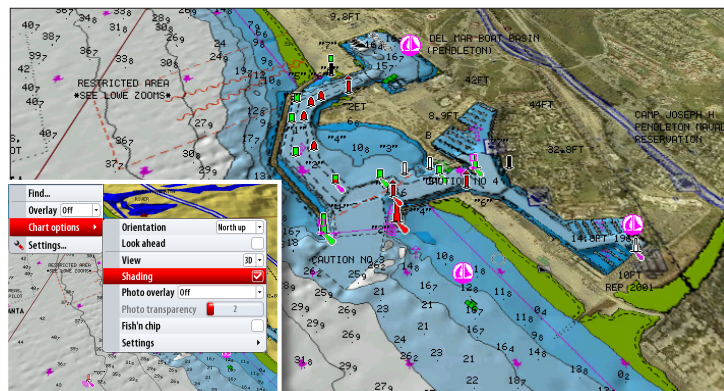
### To change photo transparency:

- Select Photo Transparency.
- Uses right and left arrows to increase and decrease Photo transparency level.

## Fish'N Chip

### To display Fish'N Chip:

- Press MENU.
- Select Chart Options, then press ✓ key.
- Select Fish'N Chip, then press ✓ key to enable/disable Fish'N Chip data.



Disable/enable shading

3D chart view with land only photo overlay

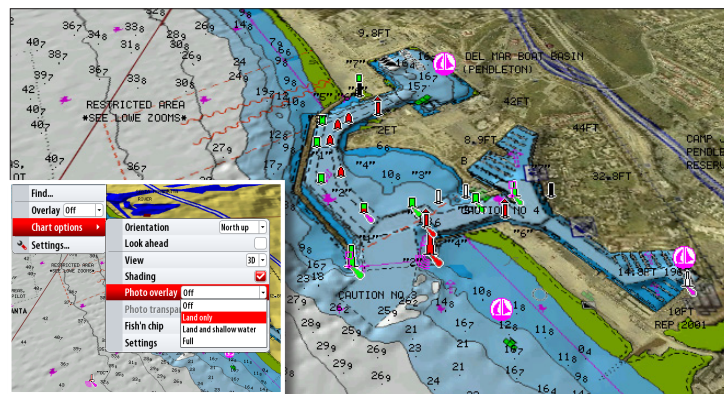
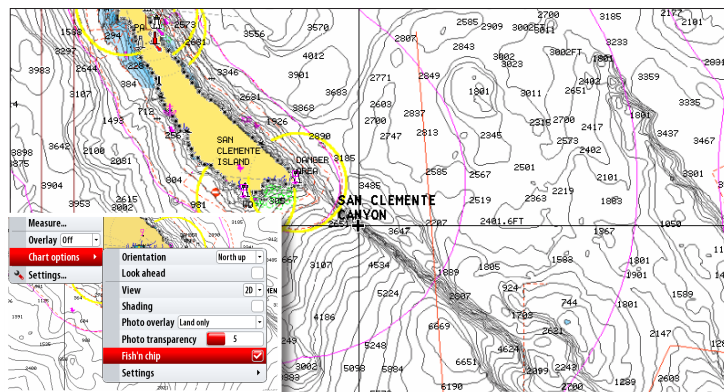


Photo overlay selection

Photo overlay on land only at level 5 transparency



Fishing data layer

### Navionics exclusive feature! Adjustable depth shading.

- Press MENU
- Select Chart Options and press ✓ key.
- Select Settings and press ✓ key.
- Select Safety Depth or Contours Depth and press ✓ key.
- Select preferred depth setting and press ✓ key.