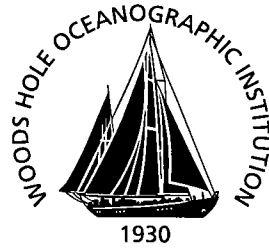


Woods Hole Oceanographic Institution



RAFOS Float Processing at the Woods Hole Oceanographic Institution

by

Christine M. Wooding
Heather H. Furey
Marguerite A. Pacheco

January 2005

Technical Report

Funding was provided by Woods Hole Oceanographic Institution.

Approved for public release; distribution unlimited.

WHOI-2005-02

**RAFOS Float Processing at the
Woods Hole Oceanographic Institution**

by

Christine M. Wooding

Heather H. Furey

Marguerite A. Pacheco

January 2005


Technical Report

Funding was provided by Woods Hole Oceanographic Institution.

Reproduction in whole or in part is permitted for any purpose of the United States Government. This report should be cited as Woods Hole Oceanog. Inst. Tech. Rept., WHOI-2005-02.

Approved for public release; distribution unlimited.

Approved for Distribution:



Nelson G. Hogg, Chair

Department of Physical Oceanography

ABSTRACT

This report and its accompanying webpage (<http://www.whoi.edu/science/PO/rafos/>) describe the processing steps for RAFOS floats, from subscribing to Service Argos to plotting the final data for a data report. The MATLAB-based tracking software ARTOA-II is described in detail. ARTOA-II allows the user to convert raw hexadecimal data to decimal format, calculate float clock drifts, edit raw data, and use the time-of-arrival data to calculate float trajectories. The intention is that this report will provide a handy reference and it will be kept from becoming out-of-date by updates to the relevant webpages.*

* As of April 2005, ARTOA3 is available for download from <http://www.whoi.edu/science/PO/rafos/>. This manual is a necessary starting point for the software, but please visit the website for additional documentation before starting a project.

TABLE OF CONTENTS

ABSTRACT.....	i
TABLE OF CONTENTS.....	iii
I. BACKGROUND.....	1
II. DATA ACQUISITION.....	1
1. Using Service Argos.....	2
2. Acquiring data from Service Argos.....	3
III. PROGRAM ARTOA-II.....	4
1. Program Environment.....	4
2. Preparing Parameters for Tracking.....	4
3. Preparing Parameters for ARTOA-II.....	5
4. Program Inputs.....	6
5. Program Outputs.....	6
6. Running Program ARTOA-II.....	7
7. Reading Data into ARTOA-II.....	8
8. Editing Options.....	10
9. Editing Temperature and Pressure.....	11
10. Editing Times of Arrival.....	13
11. Creating the INTerim file.....	17
12. Tracking.....	17
13. Error Messages.....	19
14. Completed Trajectories.....	20
IV. ACKNOWLEDGEMENTS.....	24
V. REFERENCES.....	24
VI. GLOSSARY.....	25
VII. APPENDIX A: Description of input and output files for ARTOA-II.....	26
1. Input Files.....	26
2. Output Files.....	30
VIII. APPENDIX B: Description of related programs.....	33
1. Preparatory Program.....	33
2. Plotting Programs.....	33
3. Other Programs.....	35

LIST OF FIGURES

Figure 1. Main Toolbar.....	7
Figure 2. File Selection Window.....	8
Figure 3: Selected temperature window.....	12
Figure 4: Selected pressure window.....	12
Figure 5: Unedited Times of Arrival window.....	14
Figure 6: Editing-results window – selected TOAs.....	16
Figure 7: Editing-results window – interpolated TOAs.....	16

Figure 8: Tracking parameter window.....	18
Figure 9: Trajectory window	21
Figure 10: Plot of velocities.....	22
Figure 11: Magnified plot of Time of Arrivals.....	22

I. BACKGROUND

Oceanographers have used acoustically tracked sub-surface floats since the 1960's. There have been many improvements, but tracking them remains a challenge because the submerged locations are only available indirectly.

In the early 1980's, Bill Schmitz established a small group at WHOI dedicated to using acoustic floats to measure ocean currents. Tracking software was adapted by Breck Owens from a set of programs used by Tom Rossby at URI. During the next 14 years the group tracked around 150 SOFAR floats. In order to decrease the cost of float experiments, Rossby developed the RAFOS float, which is smaller and cheaper than SOFARs and could be used in larger numbers. As part of WOCE, Breck Owens and Jim Valdes developed an improved version, which was deployed in large numbers as part of the Brazil Basin Experiment starting in 1994. WHOI scientists have now tracked over 350 RAFOS floats, have 50 currently deployed, and have more planned to deploy in the future.

When we switched to RAFOS floats we modified the SOFAR processing and tracking software to track RAFOS floats. Recently (1997) it was decided to switch to a newer Matlab-based tracking scheme. ARTOA-II is a single integrated package of Matlab routines that makes it possible to track a float in a single session. It represents a complete overhaul of previous programs and has been developed in stages by Claudia Schmid (at IFM, Kiel), Martin Menzel (IFM, then IFREMER in Brest), and Olaf Boebel (IFM, URI) (Anderson-Fontana et al., 2001). Heather Furey and Roger Goldsmith (WHOI) have worked with Olaf Boebel (now at AWI) to be sure the package includes options such as least-square tracking and Doppler-shift calculations.

The current tracking program, ARTOA-II, takes the float from raw data through the final track. By having all the steps in a single program, one can go back and correct the track by making changes at any point in the process --- removing or replacing a bad point in the times-of-arrival (TOA) series; adding or subtracting a time-constant or drift to the float or any sound source. The results can be compared and the best one selected.

Modules have been written which permit data to be read into ARTOA-II directly as received from Service Argos. Previous versions of ARTOA-II included a module to read data from MARVOR floats (versions 1 and 2). At WHOI we have added an option to read data from Seascan DLD RAFOS floats.

II. DATA ACQUISITION

SOFAR floats transmitted a signal that was recorded at several Autonomous Listening Stations. Data tapes had to be recovered from the moored ALS and brought to the laboratory for processing. The RAFOS floats *receive* signals transmitted by moored sound sources (hence the acronym in-version). When the RAFOS float has terminated its mission, it surfaces and transmits the times it recorded sounds and the sounds' correlations with a standard pattern. This

transmission is heard by satellites that forward the information, ultimately, to the laboratory. Two satellite-service providers are Orbcomm (<http://www.orbcomm.com>) and Service Argos. Because Service Argos is used more frequently, we will discuss it here.

1. Using Service Argos

http://www.argosinc.com/getting_start.htm*

The first step in using Service Argos is to make an application using the System Use Agreement form (<http://www.argosinc.com/documents/SUA.pdf>). Usually the description of the program can be easily abstracted from the proposal for the experiment. To the question "Is there a government interest in the collection of the data?" a standard reply is:

Government funded; Data utilized by government agencies.

Special requirements such as non-standard repetition rates can be requested. Include the technical page with the System Use Agreement (<http://www.argosinc.com/documents/SUA-tech.pdf>). This addresses questions like the brand, power-requirements, and model of the transmitter to be used.

The System Use Agreement should be submitted several weeks before first deployment. When it is approved, you will receive a "Program Review" with the program number, Argos ID numbers (decimal and hexadecimal), and username and password for on-line access, if requested.

At this point, a Technical File should be completed (http://www.argosinc.com/documents/technical_file.pdf). This covers details of data processing and transmission. If your experiment requires multi-satellite service (useful in areas of sparse coverage) or accurate time-coding (thousandths of seconds), request them in the Technical File. If Automatic Distribution Service is requested, an ADS Technical File (<http://www.argosinc.com/documents/ADSTF.pdf>) should be included. This states which IDs should have data sent automatically, and how it is to be sent.

Once the platforms have been deployed, it is helpful to send a list of deployment locations to Service Argos (useroffice@argosinc.com). If the platforms will be submerged for some length of time, a predicted surfacing date should be included. Service Argos will enter the deployment location into a database, which should decrease the time it takes to accept locations for the platform. (One criterion for acceptance is "How fast did this platform travel from its last location?")

A Service Agreement form must be filled out each year (<http://www.argosinc.com/documents/SAxx.pdf>). It ratifies the services needed and the method of payment. WHOI has an arrangement with Service Argos to use grant numbers directly, without requiring Purchase Orders.

The Argos User's Manual is available on-line at <http://www.cls.fr/manuel>.

* This, and subsequent, Service Argos URL is for use within the United States. The alternate international site is http://www.cls.fr/html/argos/welcome_en.html.

The Argos Joint Tariff Agreement regulates use of Service Argos by scientists. NSF and ONR usually pay the daily charge per ID directly. This charge is negotiated under the JTA and the JTA Representative of Country annually requests a form estimating usage for the next calendar year. For more information, see:

<http://www.ogp.noaa.gov/argos/index.htm>

2. Acquiring data from Service Argos

Data can be acquired from Service Argos by any of several methods. One approach is to have a dedicated email address for an experiment, and use scripts to retrieve the data from the mail-server. Another is to use scripts to telnet to Service Argos and download the data. The latter is currently the less-expensive option. Service Argos will also ftp a file directly to a directory on your computer, although this can raise security issues.

Data may also be acquired via a web-interface from a PC (Windows OS only). The program for accessing the web-interface can be downloaded at <http://argosdata.argosinc.com>. Once installed, it permits the user to manage an account (request additional ID's, *e.g.*). This webpage can create plots and tables of data, as well as offer data in standard Argos formats. Although this is a quick way to check data (especially once a "customized download" has been set up), it is not useful for automating data acquisition.

Sample scripts for both email and telnet methods are available on our webpage. The sample scripts available for retrieving email were originally written at WHOI by Ellyn Montgomery. They have been modified by other users.

<http://www.whoi.edu/science/PO/rafos/argos/email.zip>

These sample scripts use Perl modules that can be downloaded from the website:

<http://www.CPAN.org/>

Some of the module names are:

POP3Client

IMAPClient

Telnet

The webpage for Perl is: <http://www.perl.com>. Perl is available for Windows computers as well as UNIX and Macintosh platforms. In addition, the telnet approach uses an Expect script for the actual telnet session. The sample scripts available on our webpage were written by Claudia Schmid at NOAA/AOML/PhOD (Miami).

<http://www.whoi.edu/science/PO/rafos/argos/expect.zip> Expect is available for Windows and UNIX platforms. Webpage: <http://expect.nist.gov>.

Subsequent discussion of Argos data assumes the data has been transmitted in Service Argos' "DS" format, using 32-bit variables. Samples of this format are in Appendix A.

III. PROGRAM ARTOA-II

1. Program Environment

ARTOA-II uses graphical user interfaces and menus for operator control. Because selection of times of arrival and tracking are done in a single program, the user can move back and forth between these two steps as needed. This facilitates correcting bad points at the TOA stage rather than in the output file, which discards less of the available information, and produces a more accurate track.

ARTOA-II uses a file of all the parameters for all the sound sources. The Parameter information for each float is in a separate file.

ARTOA-II uses Matlab Version 7.0 or higher and requires the following toolboxes, routines and files:

- The ARTOA-II package
- The Matlab Spline Toolbox
- The hydrographic toolbox version 1.4 written at the Woods Hole Oceanographic Institution by Rich Pawlowicz.
- The Mercator routines written at the *Institut fur Meereskunde* in Kiel by Wolfgang Erasmi.

The hydrographic toolbox and the Mercator routines come bundled with the ARTOA-II software. They can also be obtained with a browser from

<http://www.ifremer.fr/lpo/eurofloat/software.html>

2. Preparing Parameters for Tracking

Before ARTOA-II can be run, information must be collected on the sound velocity in the experiment area, and on the drifts of the clocks in the sources and floats. The module that converts the float data from hexadecimal to "rfb" format computes the float clock drift by comparing the float clock time to the time recorded by the Argos data system when the float surfaces, and inserts it into the appropriate header record.

Sound-source clock drifts are often measured directly at the time the source is retrieved, by comparing its clock to standard time. A dedicated listening device can be used and the results compared to standard time. A comparison can be made for several floats of the distance between a float's surfacing location and the source, and the last travel-time between them. Finally, sometimes a final offset will be derived by trial-and-error. The accuracy of this calculation is dependent on the accuracy of the sound velocity used. Care should be taken when extrapolating the float's location back to the time of the last TOA, as this also affects accuracy. The final offset is added to the initial offset and divided by the number of pongs during the deployment to calculate the drift.

Sound velocity can be calculated using ray-tracing programs, or by comparing the distance between a known float location (usually the launch location to minimize clock drifts) and source location and the travel-time between them. To use an *a priori* sound speed, specify the value in the Sound Source file and select ‘Sound Source File’ in the tracking-parameter window. Otherwise, ARTOA-II can compute the sound speed by several methods.

Another thing to consider are leap seconds – one-second adjustments that are made to keep atomic clocks matched to astronomical time. The difference between a submerged clock (uncorrected) and a standard clock (corrected) will be affected. All leap seconds are positive. The website below keeps track of leap seconds:

<http://www.boulder.nist.gov/timefreq/pubs/bulletin/leapsecond.htm>

ARTOA-II calls ‘leapsec.m’ from ‘uitoa.m’ and applies leap-second corrections to the TOAs.

3. Preparing Parameters for ARTOA-II

Two modules, ‘makeSOSOfile’ and ‘makeHDRfile’, are included in the ARTOA-II package that build the sound source and RFB (rafos float begin) header input files necessary to run the ARTOA-II software. These modules exist independently from the ARTOA-II tracking software. The sound source file contains all metadata (*e.g.*, position, drift) related to each source used in an experiment, and the header file contains all metadata associated with each float (all the lines in the RFB file to which the float data is appended).

In previous versions of ARTOA, the sound source and RFB files were created by modifying metadata and cutting and pasting new data into files, using sample files bundled with the software package as templates. These sample sound source and RFB files are still bundled with this release of the software, so users are welcome to continue cutting and pasting. The two Graphical User Interface (GUI) modules described below are useful for two reasons: (a) formatting errors are avoided by using the GUIs, and, more importantly, (b) the header file is necessary input for the ARGOS → RFB data module within the ARTOA-II software if no RFB file exists.

Program to create sound source file

Typing ‘makeSOSOfile’ at the Matlab command line calls up a GUI that allows the user to create or modify a sound source file. The GUI contains spaces to enter all information listed and defined in Appendix A, under ‘The sound source file’. Once a sound source file is named, that file is either initialized or opened. A sound source can be added or chosen from a pull down list (if opening an existing file), and that source entry may then be modified.

Program to acquire and format header information

Typing ‘makeHDRfile’ at the Matlab command line calls up a GUI that allows the user to create or modify a header file. The GUI contains spaces to enter all information listed and defined in Appendix A, under ‘Main float file: rfbnnn.rfb/Header file: .hdr’. Once a float *.hdr file is named, that file is either initialized or opened for modification. Two pushbuttons: ‘save

HDR file' and 'save RFB file' allow the user to create/save both types of file, with an additional text box that allows the user to enter the data file location for the RFB file.

4. Program Inputs

Please see Appendix A for the detailed description of the ASCII files mentioned below (*i.e.*, not ITM).

- Initialization file, called 'artoa.ini' by default. The initialization file specifies the path to each kind of input or output file, and its extension. The default is assumed to reside in the same directory as the ARTOA-II software. To use a different file, invoke it on the command line (use complete path):
`>> artoa('-i','myfile.ini')`
- Sound source file - no restrictions on name; it is specified in the initialization file. This file contains all information needed for every sound source used.
- ARGOS file – default extension .arg; the input data as it is received from Service Argos. Implemented for Marvor and Seascan DLD floats only.
- RFB file - extension .rfb; the standard input file with unedited TOAs, temperatures and pressures, and a header specifying all needed information about this "cycle" (or mission) of the float.
- Header file – extension .hdr; contains only the header of a RFB file.

Interim (ITM) file - extension .itm; this file is both an output and input file of ARTOA. It is in Matlab binary format, and stores all information read into or created by ARTOA at the point when the .itm file was made.

5. Program Outputs

- Surface (SFC) file – extension .sfc; contains Argos locations for the transmitter.
- Status (STS) file – extension .sts; contains system information about DLD that gets transmitted with the data.
- ITM file - see above
- RFC file - extension .rfc; the traditional output from ARTOA. It contains date, latitude, longitude, velocity, temperature, pressure and quality information. It also contains source and float parameters in a header.
- TRJ file - extension .trj4; this is an abbreviated format for the trajectory information. It has a single-line header (float and cycle number) and records each have truncated Julian day, latitude, longitude, pressure and temperature, only.

6. Running Program ARTOA-II

The user must complete the following steps to calculate a float trajectory: (1) acquire the Times of Arrival (TOAs), correlation, and temperature and pressure information from an Argos or .rfb file; (2) edit the raw temperature and pressure values; (3) select the TOAs for the float and apply them to the correct sound sources; and (4) track the float and create a trajectory by converting the TOAs into distances between floats and sound sources.

Do not close a window by clicking at the upper corner of the figure. This is especially important for the main window of ARTOA-II. All editing will be lost if you close it by accident. (Matlab cannot control this window button.) Close the windows by using the "close" button, either included on the GUI figure or as a pull-down menu item under "File". When changing the float being tracked, we recommend that you exit ARTOA-II and execute the "clear all" command at the Matlab prompt, because some global data can remain when a new float is loaded.

Editing figures have "print" and "zoom out" buttons. The "print" button prints the figure area. An area of any plot may be enlarged by placing the cursor at any corner of that area, holding down the left button, and dragging the cursor in the direction which will enclose the desired area in the guide lines. When the left button is released, the screen will be redrawn with the new limits. The "zoom out" button returns the figure to its original limits. Trajectory figures can be blown up in the same way. Although there is no "zoom out" button, clicking the right mouse button will increase the area of the figure by steps back to the original limits.

Start Matlab. Be sure to establish the path to ARTOA-II, if needed:

```
path(path,'c:\matlab\ARTOA\artoa2')
```

You may want to change directories, but most paths to input and output are handled by 'artoa.ini'.

From Matlab, execute 'artoa.m' by typing 'artoa' at the Matlab command line. There is a flash screen, and then just the main toolbar:



Figure 1. Main Toolbar.

on which only four buttons are "live", connecting to the following cascading menus:

- File → Load → ARGOS file
 - RFB file
 - Interim file
- File → Save → TRJ4 File
 - RFC File
 - Interim File
- File → Quit

Options → reload data → Reload ARTOA Init File - updates initialization information
→ Reload Sound Source Data - updates sound source information during processing
→ Overload RFB File - reloads the RFB header information for the float being processed. You may overload the header information even if you began with an .itm file – this does **not** reload the rest of the rfb data.

Statistics - not implemented yet

Help → About ARTOA - gives flash-screen (with websites)
→ Float info - gives all information in RFB header
→ Soso info - gives all information in the sound-source file

Click on the File → Load option and select your file type. When you select a kind of data to load, a file-selection window appropriate to your platform will be opened, and a specific file can be selected.

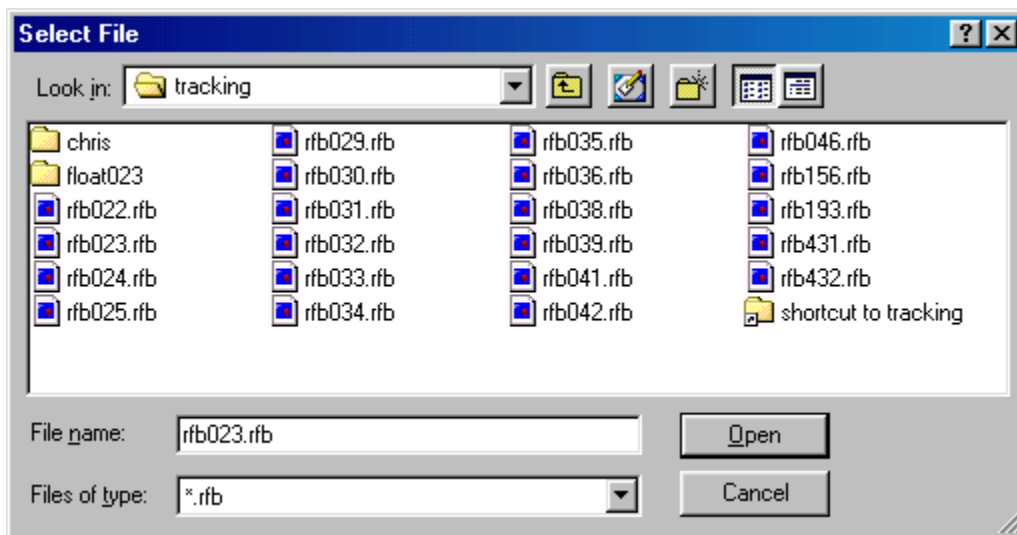


Figure 2. File Selection Window (on a PC).

7. Reading Data into ARTOA-II

Starting with Argos data

In an effort to handle all currently deployed floats, the modules read data transmitted under Service Argos' previous 20-bit-identifier (ID) format and the current 28-bit-ID format (which differs a bit depending on how many bits of ID the float actually uses). Determination of the kind of ID is made by looking for either "20" or "28" in the "-type" record of the header, and by examining the PTT decimal identifier. Marvors are recognized by "-type" being either 'MARVORv1' or 'MARVORv2'

The program expects a raw data file (.arg), and a file with the header information ARTOA-II needs (either a .hdr or previous .rfb file). This module can be run recursively, as more of the Argos messages are acquired. Output files include an rfb...rfb file containing the header (with the optional addition of the float clock-drift) and TOAs, correlations, temperatures, and pressures; a status file (.sts), containing two records per status message; and a file containing the locations calculated by Service Argos for the transmitter (.sfc). The default names for the latter two combine the “-floatname” from the header and the extension. The default name for the rfb file is the float number (numeric part of “-floatname”) with rfb before and .rfb after.

ARTOA-II brings up a file-selection window (“Select Raw File”) for the Argos data file. Select a file. Then comes a “Select Header File” window (“.hdr” is the default). The path and filename of the selected files are echoed in the Matlab command window. The command window then requests four inputs:

```
>> Do you want clock error [y/n]?
>> Do you want to keep bad checks [y/n]?
>> Enter new P-target or return:
>> Enter new T-target or return:
```

If you want ARTOA-II to compute the float clock drift and insert it into the second “-offset” record (in place of “0.00”), answer “y” to question one. If you are interested in filling in data gaps with messages that fail the CRC test, answer “y” to the second question. If you want to override the pressure or temperature “target” (the values at the time the float released its weights, read from the first part of the status message), type that value in the command window; otherwise hit “return”.

ARTOA-II will now report

```
>> Testing for RAFOS data file rfbXXX.rfb
```

If the file is found, the header and any pre-existing messages will be read and stored. When the raw data file has been read, the same filename will be re-used and old and new messages written to it. If a file by that name does not exist, a file-selection window will open (“Get old .rfb file”), and you may select an alternate file in rfb format. Click the “cancel” button in the file-selection window and ARTOA-II will report

```
>> Creating file rfbXXX.rfb
```

The same steps will now be followed for the status (.sts) and surface (.sfc) files. If files with the default names are found, they will be wound forward and new data appended. If not, you may select files with other names, or “cancel” the selection windows, and files with the default names will be created. In the case of the status file, three header lines will be written to it.

ARTOA-II will read through the Argos file, decoding TOAs, correlations and temperatures and pressures. When it reaches the end of the Argos raw file, it will report (in the command window)

```
>> EOF on file xxxxxxxx
```

If you requested clock-error calculation,

```
>> Clock stats for 10 messages: mean -1.7257 std 0.00478
```

Where the numbers in italics are examples (10 is maximum number of input-messages used). Or

```
>> *** No valid times for clock correction.
```

indicates no status messages or none passed check. If no messages were added during this run, you’ll see

```
>> No new messages
Otherwise, ARTOA-II will report
>> Obtained 81 new messages
and list the raw message numbers in the order they were read.
Finally, ARTOA-II will display
>> Messages read: 3464 Passed check: 2281
(where "check" refers to either CRC or checksum) and
>> Normal end
```

Argos-input error messages

```
>> *** ERROR: number of Argos message records
[The Argos-position record is echoed.]
>> *** Position saved.
When a pass of raw Argos data has the wrong record count, ARTOA-II generates this message.
>> *** CLOCK STD. DEV. IS LARGE
This is generated if the standard error of the clock correction is greater than one.
```

Starting with an rfb...rfb file

The path and filename of the selected file are echoed in the Matlab command window.

```
>> filename =
      rfb023.rfb
pathname =
      E:\float\data\NBC\tracking\
```

8. Editing Options

At this point, the other two buttons on the main toolbar become "live":

Edit → Times of arrival
→ Temperature
→ Pressure
Track → Track parameter
→ Trajectory output

Editing windows have an editing toolbar, labeled "data", at the right of the figure. The options are paired (pick and drop) (delete and undelete) (apply and withdraw) and refer to different steps in the process.

Pick → polygon
→ point
→ semi-auto
→ cancel

If "point" is selected, crosshairs appear, which can be moved with the mouse. Click the left mouse button when the crosshairs are in place. When a further action is specified, it will be done to the point nearest the intersection of the crosshairs. For "polygon", crosshairs also appear. By clicking the left button, you specify one vertex of a polygon, which can be used to enclose data

to which a next step will be done. Proceed with left clicks until the area is surrounded, then right-click to close the polygon. Any number of picks may be made before “apply”ing them to a variable. "Semi-auto" can only be used in editing TOAs, and is not yet implemented. The “cancel” button closes the pick pop-up menu.

Any "pick" can be undone by clicking on "drop". A second "drop" will undo the previous pick, and so on.

The “Apply” button works as follows in the different selection windows:

- In the Temperature and Pressure selection windows, the “Apply” button assigns the corrected Temperature and/or Pressure data series to the float you are working on for further processing.
- In the Times of Arrival selection window, the “Apply” button brings up a pop up menu listing all the available sound sources from the source file, so you can click on the sound source number that corresponds to the selected TOA data that you want to apply.

"Delete" hides selected points from further processing (use "undelete" to undo). For instance, if a point is "deleted", and then surrounded by a polygon that is "applied", the deleted point will be omitted from the selected data. Deleted points turn gray. Applied points turn white. The objective is to have all and only the good values turned white.

"Withdraw" resets points to their initial state and only works on points that have been selected (and applied). No matter how few points one wishes to withdraw, always use the polygon to identify them, not “point”.

9. Editing Temperature and Pressure

Because the routine to calculate the nominal arrival times of sound signals at launch and surface times may use the float’s temperature and pressure to calculate sound speed, it is recommended that the temperature and pressure records be edited first.

Click on Edit → Temperature and an editing window will open. The experiment name, float identification and selected variable are noted at the top of the plot. The x-axis is time in truncated Julian days labeled ‘Message Date’ and the y-axis is temperature in degrees centigrade labeled ‘Temperature [C]’. Values are shown in yellow. Matlab now controls the window toolbar, with the exception of the Show button.

Show → Data → all temperature (the default)
→ selected temperature

Show → Grid - toggles whether the grid is visible or not

The “Shift” button is used to handle rollover problems in the floats. Rollovers occur because the temperatures and pressures are truncated before they are stored. ARTOA-II uses the “targets” stored in the status files or your input targets to move the truncated values to the correct range. Occasionally, temperatures or pressures vary over so wide a range that a single target

doesn't suffice. If this data includes useful values, it must be selected and shifted back to be valid. When the "shift" button is clicked, a request for number of degrees or meters to be added to shift the selected data back in line appears in the Matlab command window. Once you type in the answer, the selected points are moved back in line on the screen. Then the useful values need to be re-selected and applied. Points left unselected and unapplied (i.e. yellow) will not be saved in the edited temperature record; it is not necessary to delete a point to exclude it from the final record.

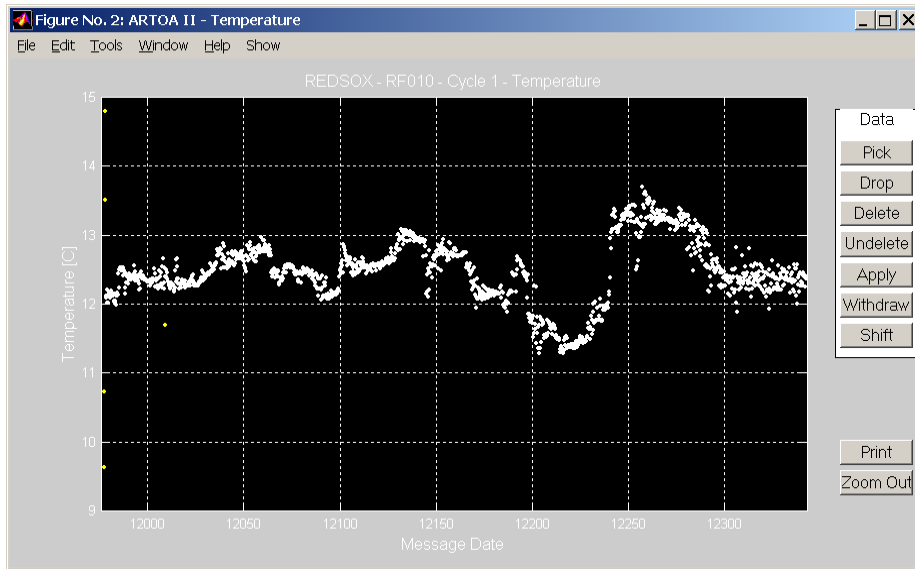


Figure 3: Selected temperature window (good values are white). N.B.: Before selection, all points are yellow.

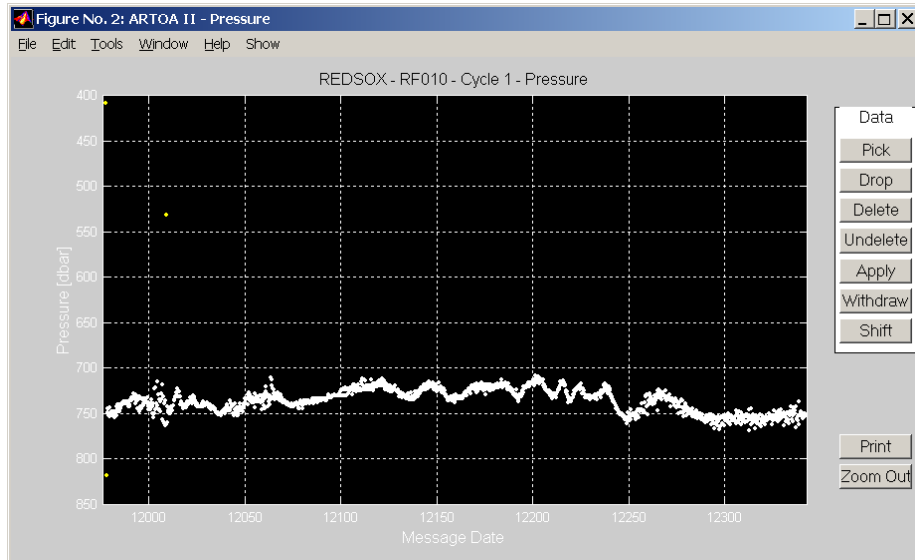


Figure 4: Selected pressure window (good values are white). N.B.: Before selection, all points are yellow.

After selecting and applying the desired temperature values, it is a good idea to look at "selected temperature" (Figure 3) before leaving the window as a check that you have what you

wanted. Use File → Close to close the figure. If data is missing, return to the “all temperature” window to add it.

Click on Edit → Pressure and another editing window will open (Figure 4). It works just like the temperature window. The y-axis is pressure, increasing toward the bottom of the plot labeled ‘Pressure [dbar]’. Again, be sure to use File → Close to close the figure.

Now is a good time to save your work by clicking File → Save → Interim file.

N.B.: at least FOUR TOA values must be selected and assigned to a source before an rfcnnn.rfc file can be created.

10. Editing Times of Arrival

Click on Edit → Time of Arrivals and a more complicated editing window will open. All times of arrival heard by the float will be displayed at once, represented by diamonds. The color intensity of the diamonds depends upon their correlation height (e.g., yellow for low and red for high). The side toolbar for TOAs differs from that for temperature and pressure: the header "Source" has been inserted before Apply and Withdraw. When user clicks "Apply", a sub-window opens which offers a button for each source in the source file and a "cancel" button. By clicking on a particular source, currently selected TOAs are assigned to that source.

In the TOA selection window, the experiment name, float identification and selected variable are noted at the top of the plot (Figure 5). Both axes of the TOA window represent time: the x-axis is time in truncated Julian days (labeled ‘Message Date’) that represents the float mission duration, and the y-axis represents the time from the opening of the float’s first listening window until the close of its last listening window of a cycle, and is labeled ‘TOA [s]’. Matlab now controls the window toolbar, with the exception of the “Show” button.

The TOA window includes additional information: The predicted point at which a given source would have been heard at the start and end of the float mission is marked at each y-axis (red letters, in this case, red numbers, in other cases, depending on how source is named in sound source file). Identification of a source is only given if the source was operating at the start (or end) of the float mission. Vertical dashed lines indicate the start or end of a source during the float's mission, with source identified at top. Vertical solid lines mark the start (down-arrow) and end (up-arrow) of the float’s mission. Horizontal lines separate the listening windows.

For the TOA window, the choices for the "show" button are:

Show → Data → All TOA - the default

→ Data → Selected TOA

→ Data → Interpolated TOA

→ Grid

→ Sound Speed - brings up the Tracking Parameter window (when needed)

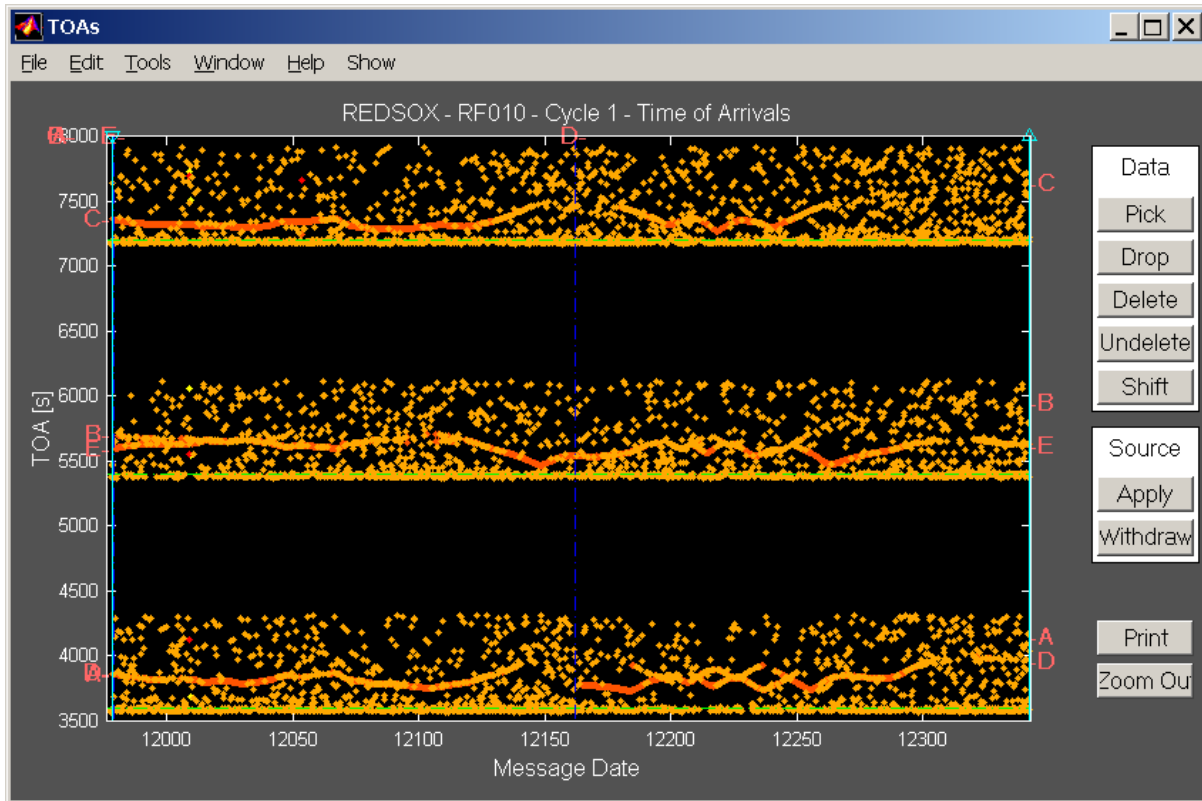


Figure 5: Unedited Times of Arrival window.

Choose Show → Data → All TOA from the cascading menu and then select and apply the TOA values of your choice for each sound source using the appropriate buttons from the side toolbar labeled “Data” (“pick”, ”drop”, *etc.*, described above). Use the “zoom” feature to permit working on one listening window at a time (See Figure 11 for an example of a magnified view of a TOA-editing window.). You can also use the Show → Grid toggle to apply a grid to the TOA plot, which will help to identify the correct start and end Julian days of each sound source.

The correlation range of the float is specified in the header information of the ‘rfbnnn.rfb’ file – this controls the color codes in the TOA-editing figure. The colors themselves are set in Matlab routine ‘uitoa.m’.

A quick method for selecting TOAs in “tidy” data is to pick several overlapping polygons and then “apply” them all to a source. However, if you have overlapping sources in the TOA window, take care to pick **only** those points specific to the current source; previous application, changing the point’s color to white, will not preclude the point from being applied to a second source. In the future, when “Semi-auto” is implemented, it will be a quick way to select TOAs. You will be able to use the crosshairs to select a point at the start of the sound-source record and ARTOA will try to select the time of arrivals automatically.

The “Shift” button is used to handle rollover problems in the TOAs. Rollovers occur when TOAs from a sound source are heard in a window after the window in which the sound source pongs. Because the initial 80 seconds of the listening buffer (the interval required to hear the

signal from a source) is not overwritten, some TOA data from window 3 can be seen at the start of window 1, *etc.* If this data includes useful TOAs, it must be selected and shifted back in time to be valid. When the “shift” button is clicked, a request for number of seconds to be added to shift the selected data back in line appears in the Matlab command window. Once you type in the seconds to be added for the shift, the selected points are moved back in line on the screen. Then the useful TOAs need to be re-selected and applied to the correct sound source. For example, when a float’s TOAs rolled over from window 2 into window 3 in an NBC DLD2 float, then three minutes (the difference between the 27 minutes the window was open and the 30 minutes between windows) was subtracted or (–180) seconds was added to “shift” them back into line.

Another application for the "shift" button occurs when the TOAs roll over within a window. The maximum value of a TOA represented by 12 bits is 4096, which converts to 1259 seconds or 21 minutes when the conversion factor is .3075 seconds and to 12.6 minutes when fast sources are used (.1846). The windows in the NBC DLD2 RAFOS floats, for example, were set to be open for 27 minutes; this meant that the TOAs in the first 6 minutes or 361 seconds of the window were ambiguous. When the TOAs in this experiment rolled over in the same window (with no window change), 21 minutes or 1260 seconds were added to “shift” them back into line. In this case, the modulo number of seconds must be added to the rolled-over values (and they must be re-selected and applied to a source).

When you hit the "shift" button, the Matlab command window displays these questions:

```
>> Please enter by how many seconds the data shall be shifted:
```

```
>> Please indicate if the cycle needs to be shifted [y/n]:
```

The second question should be answered "y" only in the case where a TOA has rolled over from the last window to the first window. This means the cycle of the TOA should change (*e.g.*, a date-change in a 24-hour float).

Show → Data → Selected or Interpolated TOA displays all the selected TOAs in a format similar to the TOA-editing window (Figure 6): the color intensity of the symbols varies with correlation height, but each sound source is differentiated by a different symbol (asterisk, circle, *etc.*). Any interpolated points are white (Figure 7). This is an opportunity to check that TOAs have been attached to the correct sound source. These figures also display the start and end times for each source in truncated Julian day. These values are used in specifying which combinations of sources are to be used for tracking different intervals of the float-mission. The default, linear-interpolated data, will be displayed if no change has been made to the Tracking Parameter window. Note: the Selected or Interpolated TOA windows are **editing** windows, and you can withdraw selected TOAs at this point. To **add** a point, it is necessary to return to the “All Data” window (Figure 5), where selected and unselected points can be seen. Use “polygon” to select any additional points, then “apply” them.

If TOAs were applied to the **wrong** sound source, they can be corrected by using the Data toolbar option buttons. Use the “Pick → polygon” buttons to select the data, and the “Withdraw” button to reset the TOAs back to their raw data values. It is important that you use the “**polygon**” button to select the data when withdrawing points. Then reselect the TOAs and apply them to the correct sound source.

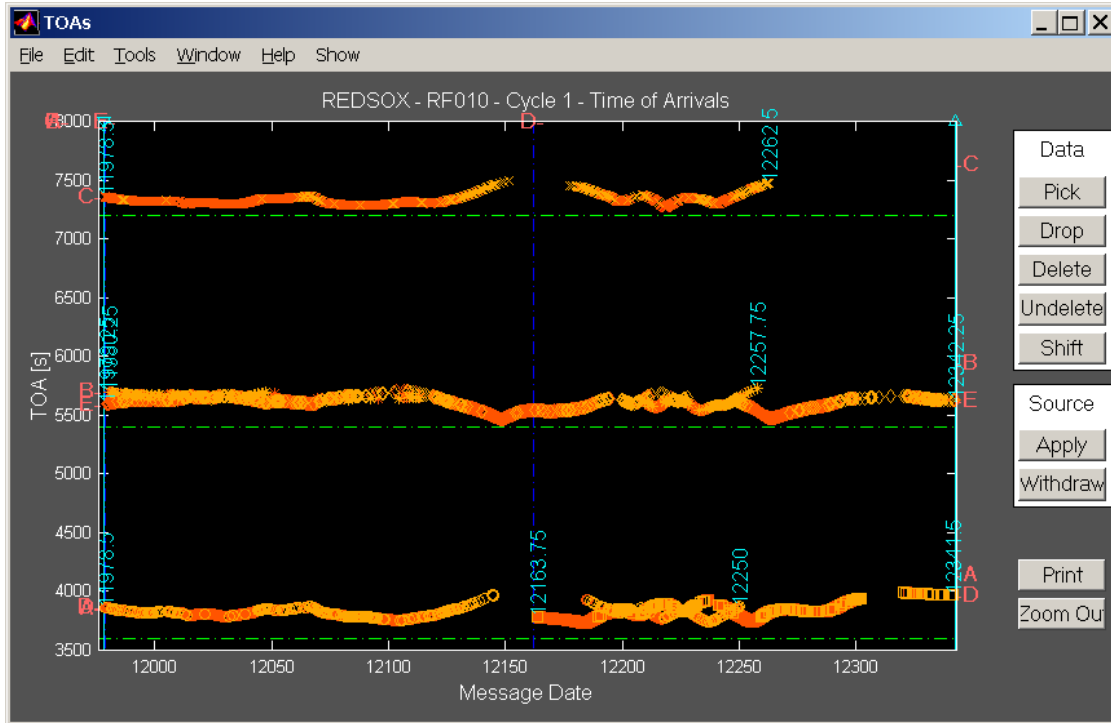


Figure 6: Editing-results window – selected TOAs. Note different symbol for each source.

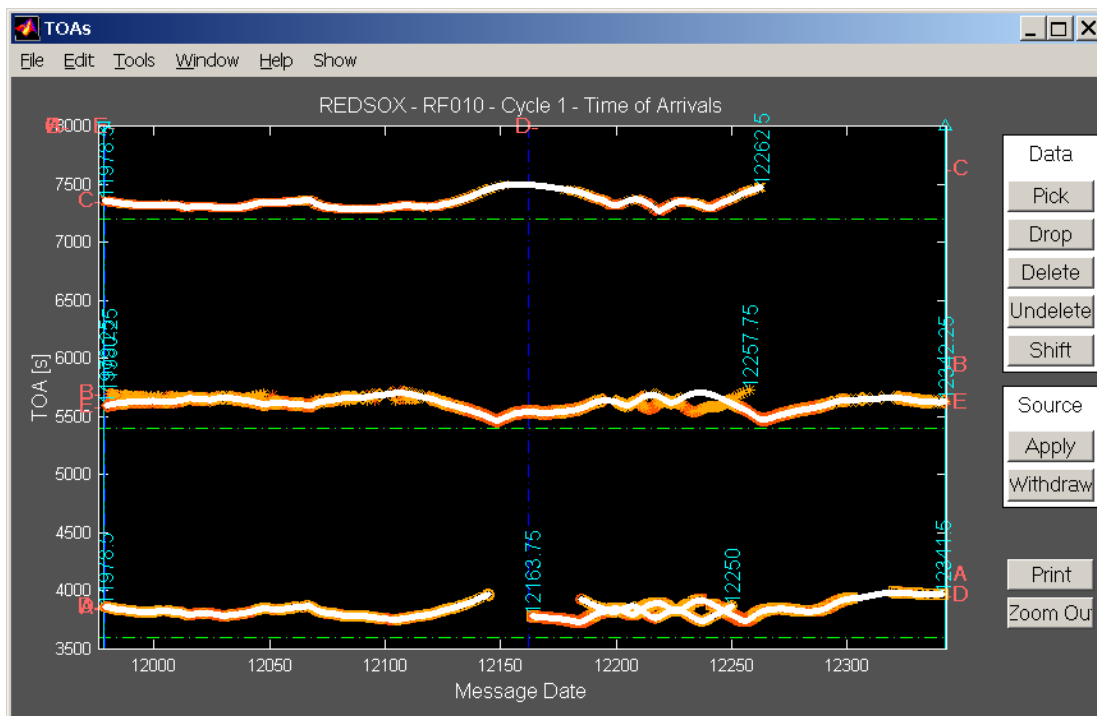


Figure 7: Editing-results window – interpolated TOAs.

11. Creating the INTERim file

Whenever you take a break in running ARTOA, it is a good idea to save your work in an interim, Matlab-binary file. The file-selection window should give you flexibility in naming files, but the extension should be .itm, to insure that it will be listed if you want to load it. The “standard” name is ‘rfnnn.itm’. It is important that the interim file name be five characters in length with the float number in positions 3:5, because the ARTOA program assumes this in naming the final tracked ‘rfcnnn.rfc’ file. You should **always** create an interim file on completion of TOA selection, or information will be lost. A **backup** copy of the .itm file will be useful on the rare occasions when an .itm file gets corrupted. You can save the currently selected values by clicking on File from the ARTOA main toolbar: File → Save → Interim File

An itm-file can be viewed by saying "load filename" (no extension) at the Matlab prompt. The contents can be listed by typing "whos" at the prompt (or in a Matlab workspace window), and a specific item by typing its name.

You don’t have to wait until all Temperatures, Pressures and TOAs have been selected and applied to save the data. However, once you have edited the Temperature and Pressure values, you must select and apply at least four TOA values to a sound source before you save to an interim ‘rfnnn.itm’ Matlab binary file or your file will be corrupted. The ‘rfnnn.itm’ file once created can also be used as an input file and updated throughout the processing.

12. Tracking

When all useful TOAs have been selected and applied to the correct source name, the Tracking Parameter window gives you control over the next step. If the Tracking Parameter window is closed, it can be opened clicking “Track → Track parameter” on the ARTOA toolbar. The Tracking Parameter window is labeled with the experiment and float ID. Select tracking method, Doppler shift or none, and sound-velocity calculation. You can select **one** interpolation algorithm (for input) and **two** interpolation intervals (the interval for input is in days, that for output in hours). See Appendix A for a discussion of interpolation applied to output parameters.

Tracking Method → Circular – location by intersecting circles of constant distance from sources

- Hyperbolic – location by intersecting spheroidal hyperbolas representing points of equal difference in distance from sources
- Least Square – minimizes the sum of the squares of the residuals of estimated locations (default)

Circular and hyperbolic use the local routine ‘xnavai.m’ and a maximum of two sources (circular) or three sources (hyperbolic) to calculate a location. If hyperbolic method is chosen, yet only two sources are available, then program defaults to the circular method. least square uses ‘ls_converge.m’ and a maximum of three sources.

The Doppler correction algorithm uses a centered-difference method to correct the TOAs for the distortion caused by the speed at which sound is traveling (default is no correction).

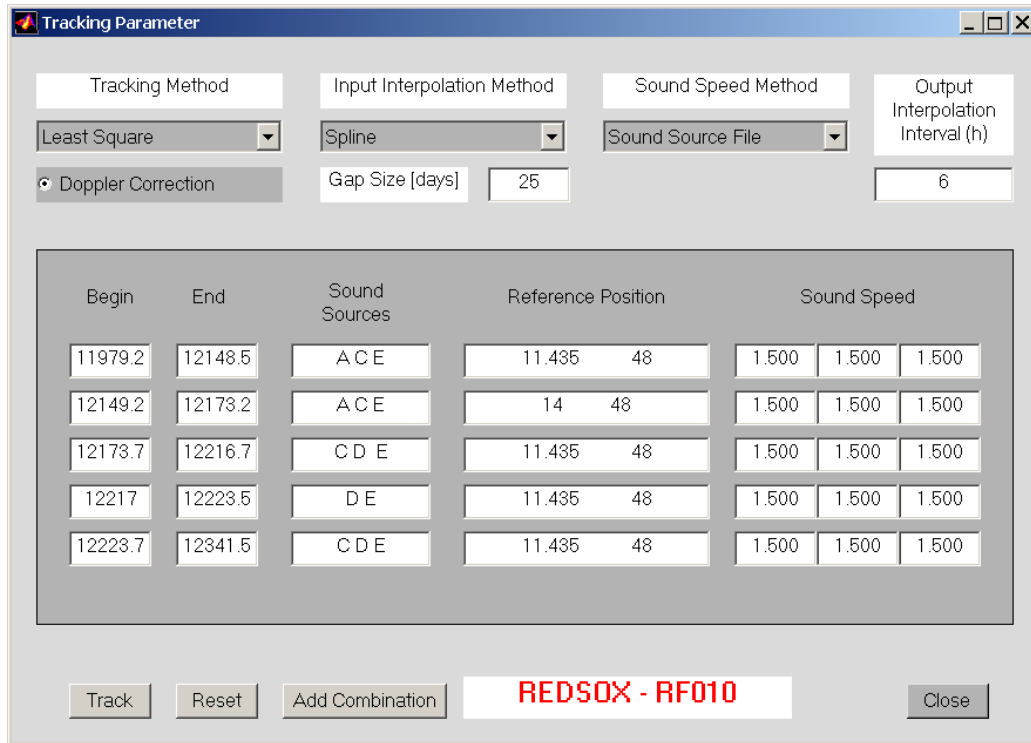


Figure 8: Tracking parameter window (filled in).

Input Interpolation Method → None

→ Linear - straight-line interpolation is used ('interp1.m' - default)

→ Spline - a cubic spline is applied ('spline.m')

→ Cubic - a cubic convolution interpolation is applied ('interp1.m')

These two routines are part of the Matlab library. Please see Matlab documentation for more information.

Gap Size (days) - integer value - the limit in days for TOA interpolation (default is zero).
See Figure 7.

Sound Speed Method → Del Grosso – (default) uses the Del Grosso equation in the Matlab routine

'soundspeed.m' to compute sound velocity from mean temperature and pressure (Del Grosso, 1974).

→ Linear - calculates the speed of sound by the linearized expression :

sound velocity = (average T - 7) * 0.0011 + 1.49

→ Sound Source file - each source must be assigned a velocity in the input

file

→ Levitus - sound velocity computed from climatological data (Boyer and Levitus, 1994; Levitus *et al.*, 1998) (Not implemented; defaults to 1500 m/s)

Output Interpolation Interval (h) - integer value in hours (default is "schedule", or input interval)

Now select the sound-source combinations and intervals. Start and end are given in truncated Julian day (either integer or one decimal place), labeled 'Message Date' in editing figures. There can be gaps between the end of one interval and the start of the next, but overlap of two intervals is not permitted. List the sound sources as labeled on the TOA window, separated by spaces. Either two or three sources may be used for an interval. Use the "Add combination" button at the bottom to get another blank line. You can divide the mission into an unlimited number of intervals.

The reference point initially defaults to the launch position of the float. Other positions can be used, and sometimes are needed to overcome a baseline reflection.

You must enter the message date numbers and the sound sources to be used before you choose the 'Sound Source File' option for the sound speed method. If you do not, the following error message appears in the Matlab command window.

```
>> No Sound Source selected. Sound Speed estimation method
not applicable. Default to Del Grosso.
```

If everything is set, the sound-velocity value for each source will appear in the corresponding block.

"Reset" will empty all combination lines and return other choices to their default values.

"Close" to close window. Note that closing the window does not clear all values.

When all parameters have been entered, click the "track" button to begin tracking. At this point, you have the option of entering additional clock corrections for the float and the sources in the Matlab command window. Type in any additional float offset at the beginning or end of the float mission. Note that an additional float offset at the end will be expressed as a drift throughout the mission. Enter any additional offsets for sound sources. These will be added to the entire source record. Give any necessary corrections in seconds and decimal part or press the <enter> button for no correction.

```
>> Add additional float offset at the beginning: <ENTER>
>> Add additional float offset at the end: <ENTER>
>> Add additional offset for Sound Source B1: <ENTER>
>> Add additional offset for Sound Source 69: <ENTER>
>> Add additional offset for Sound Source 77: <ENTER>
>> Add additional offset for Sound Source 404: -3.0
```

Once you have answered the above questions in the Matlab command window the float trajectory will be calculated and displayed in the Trajectory Output window. While ARTOA-II is calculating the track, it outputs a two-letter code to the screen, 'ls' for least square, 'hy' for hyperbolic, and 'ci' for circular.

13. Error Messages

```
Multiple TOAs in sound source 77 at following times:
      11430.5      11522.2      11574
```

Use Edit → Time of Arrivals to return to the TOA editing window and withdraw the incorrect TOA(s), using the “polygon” option. Do this for each source and Julian day. Then hit "Track" in the Tracking Parameter window again.

No sound sources selected

- a) No record numbers were specified before “Track” button was pushed.
- b) The button to specify sound-source method was pushed before sound-source combinations were selected.

No convergence - this depends on the tracking method selected:

Both circular and hyperbolic tracking use a limit of 20 iterations; least-square tracking uses a limit of 30 iterations. If no acceptable result is obtained in 20 or 30 tries, the message *no convergence* is issued.

Hyperbolic tracking not possible: only 2 sound sources specified, using circular tracking.

Issued by ‘uitraj.m’ if hyperbolic method does not have the required three sources.

If there are fewer than two good sources, ‘ls_converge.m’ will report NOT ENOUGH VALID POINTS.

If ARTOA-II bogs down or behaves oddly during tracking, it is possible that a file has gotten corrupted. If there is no backup “.itm” file, you may need to re-extract the data. If messages regarding: “Index exceeds dimension” are seen, check the sizes of arrays by typing

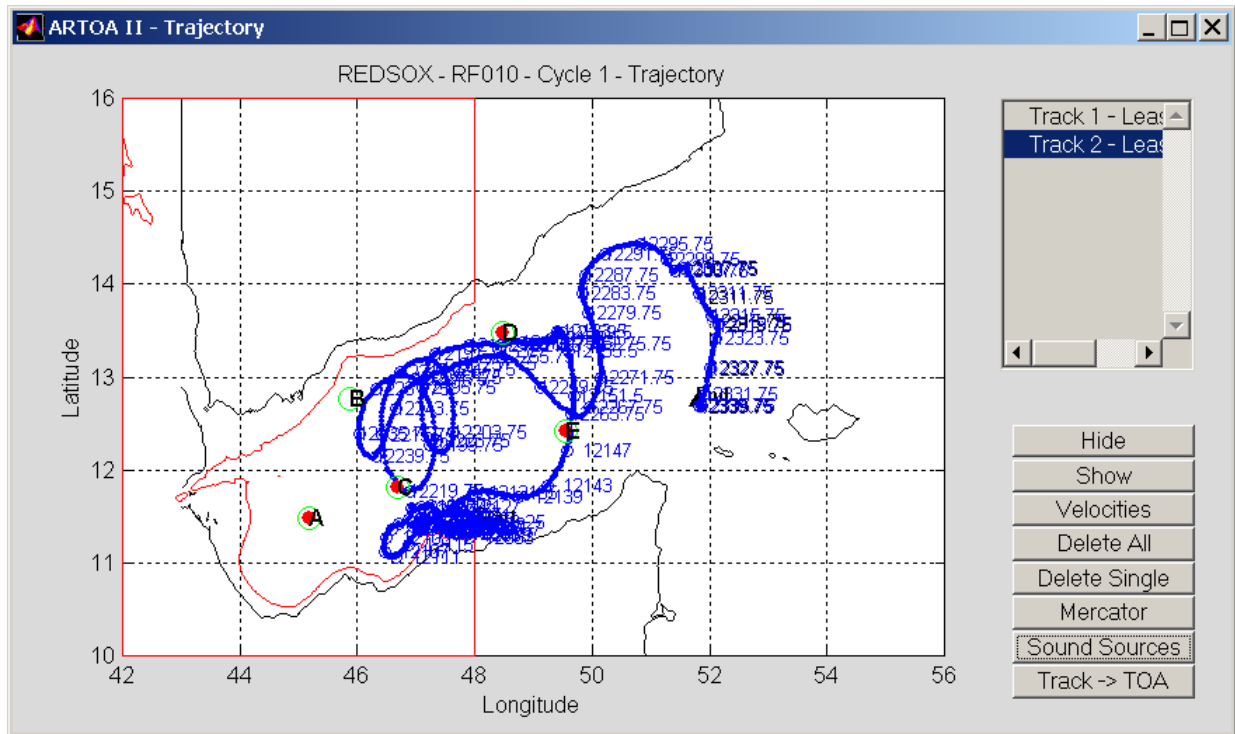
```
>> whos global
```

Often this problem is caused because the “-cycle” record doesn’t agree with the actual data. It is a good idea to exit the tracking session and ARTOA, type ‘clear all’ at the Matlab command line, and start again.

14. Completed Trajectories

The resulting track will be displayed in a new figure (Figure 9), using a square projection. “Track → Trajectory output” will produce the same figure. Each record tracked is represented by a dot. Every four days along the track a larger circle is labeled with the truncated Julian day (to modify this interval, change variable “dateint” at the beginning of ‘uitraj.m’). Earlier tracks are gray (not visible in Figure 9); the latest track is blue. The launch and surfacing positions of the float are indicated by an open down-arrow labeled "Start" and a filled up-arrow labeled "End". The “best” trajectory is usually the one that comes closest to the “start” and “end”. To exclude bathy-metry and coastlines, modify ‘uitraj.m’.

Each tracking run for this float is listed on the upper right with the method used ("least square", *e.g.*). Whichever version is highlighted (default is the latest) will be affected by further selections.



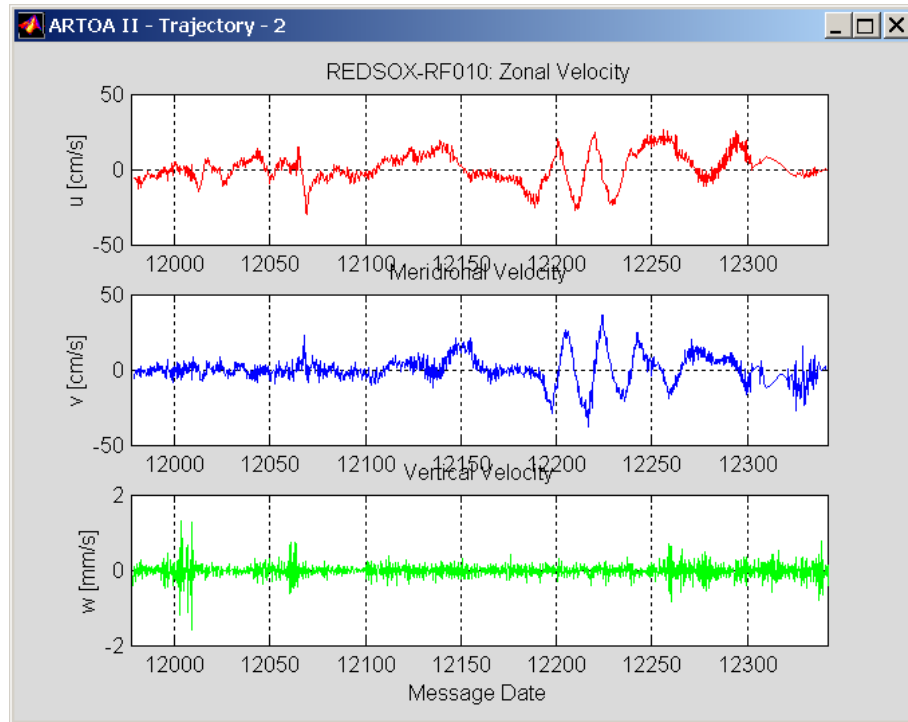


Figure 10: Plot of velocities.

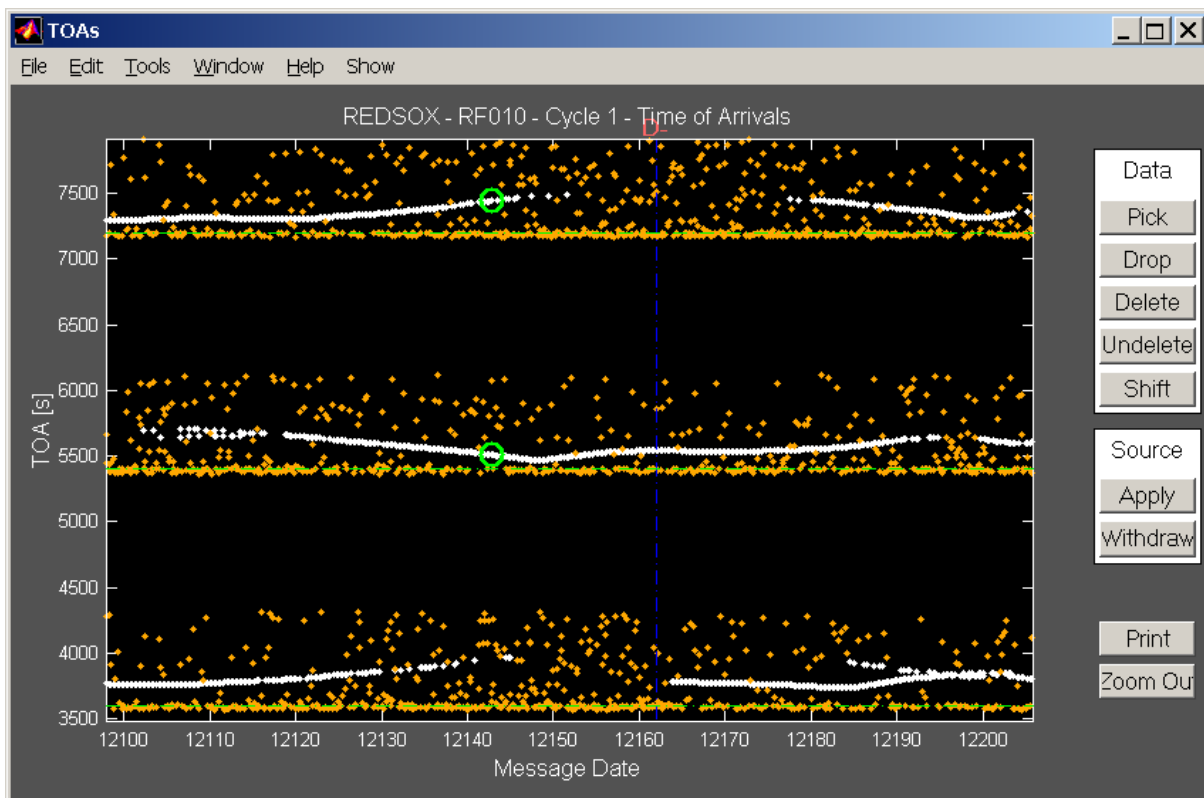


Figure 11: Magnified plot of Time of Arrivals, showing those used in a questionable point.

When you are satisfied with the highlighted trajectory in the trajectory output window, you can save it as the final product of ARTOA-II. Click on “File” in the ARTOA main toolbar and use the cascading menu as follows: File → Save → RFC File. It is also a good idea to save your work to an interim ‘.itm’ file again at this time, and every time you go back to do further editing work on the float data.

File → Save → TRJ4 File
→ RFC File
→ Interim File

- "TRJ4 File" saves a single version of the track in a 5-column ASCII file, with a single header line, described in Appendix A.
- "RFC File" saves a single version of the track in an ASCII file, with header information, in a format described in Appendix A.
- "Interim File" will save all versions of the track, as well as the selected inputs. It also saves the Tracking Parameter information.

A file-selection window will open, listing any files with the output extension selected. Specify the filename wanted and hit the "Save" button in that window (or "Cancel").

Use File → Quit to close ARTOA-II. If you plan to track another float, be sure to “clear all” Matlab space before continuing.

IV. ACKNOWLEDGEMENTS

Financial support for this research program was provided by the Woods Hole Oceanographic Institution through Grant No. 32001601 from the George K. Moss Director's Discretionary Fund.

V. REFERENCES

Anderson-Fontana, S., P. Lazarevich, P. Perez-Brunius, M. Prater, T. Rossby, and H-M. Zhang, 2001. RAFOS Float Data Report of the Atlantic Climate Change Experiment (ACCE) 1997-2000. University of Rhode Island, G.S.O. Tech. Rept. 2001-4, 112 pp.

Boyer, T. P. and S. Levitus, 1994. Quality control and processing of historical temperature, salinity and oxygen data. NOAA Technical Report NESDIS 81:65.

Del Grosso, V.A., 1974. New Equation for the Speed of Sound in Natural Waters (with comparison to other equations). *J.Acoust. Soc. Am.*, **56**, 1084-1091.

Del Grosso, V.A., and C.W.Mader, 1972. Speed of Sound in Pure Water. *J.Acoust. Soc. Am.*, **52**, 1442-1446.

Levitus, S., T.P.Boyer, M.E. Conkright, T. O'Brien, J. Antonov, C. Stephens, L. Stathoplos, D. Johnson, and R. Gelfeld , 1998. World Ocean Database 1998 Volume 1: Introduction, NOAA Atlas NESDIS 18, U.S. Government Printing Office, Washington, D.C., 346 pp.

VI. GLOSSARY

checksum The term "checksum" was created to describe early error detection techniques which used summing formulas and appended the result to the data. Checksum now has a more-general meaning, encompassing sophisticated algorithms such as the CRC (Cyclic Redundancy Code). The CRC algorithm treats the message as an enormous binary number, divides it by another fixed binary number, and makes the remainder the "checksum". The receiver can perform the same division and compare that remainder to see if the message was correctly received.

correlation height the strength of the signal. Limits, depending on type of float, are specified in the rfb header.

cycle (a) used by ARTOA-II to mean a float mission; this allows ARTOA-II to work on multiply-submerging floats (such as Marvor and ALFOS). (b) a complete set of listening operations (usually listening and stopping three times). Usually the same as line or record. See also phase.

drift The amount by which a clock can be deduced to change over some time interval. Source clock drifts are quoted in seconds per interval between pongs. Float clock drifts are quoted in seconds per day (negative = fast).

edit (a) to select the TOAs you want from all those available for a given float, (b) to correct your initial selections (of TOAs, temperature or pressure values).

mission The amount of time a float was meant to stay submerged.

offset (a) an amount by which a TOA for a given source or float is always off from the correct time, (b) a momentary difference between an instrument clock and the correct time. An "initial offset" (a) would always be applied. A "final offset" (b) would be combined with an initial offset and divided by the duration of the deployment to calculate the drift.

phase Used by ARTOA-II in headers. Phase is used to mean a complete schedule of listening intervals. For example, "phases per cycle" means the number of listening intervals in the mission of a float. [This is to replace "cycle", now used to mean a descent and ascent.]

schedule Hours between first pongs – which has also been called "cycle" (*q.v.*)

window (a) a figure on the screen, as in "an editing window", (b) a single interval, usually around 30 minutes, during which a float is listening for pongs.

VII. APPENDIX A: Description of input and output files for ARTOA-II

1. Input Files

The ARTOA-II configuration file

The ‘.ini’ file is the main configuration file for the program. It connects the modules to the directory for each kind of file and its extension. If the program is not called with an alternative name, it will try to load the standard file called ‘artoa.ini’ which it expects in the same directory as the software.

Note: directory names are machine-dependent. The example below is from a UNIX machine. A sample directory from a PC might be: C:\data\tracktest\new_exp\

```
[files]
soundsourcefile    /home/rafos/data/soso.dat      % location of the sound source file
projectfile        /home/rafos/data/default.prj   % location of the project file (not used yet)

[directory]
session            /home/rafos/                  % directory to store the current session
                                                             (not used yet)
argos              /home/rafos/argos/      % directory to store the Argos files
header            /home/rafos/argos/  % directory to find header information
sts              /home/rafos/argos/  % directory to find/store status records
sfc              /home/rafos/argos/  % directory to find/store surface navigation
interim          /home/rafos/interm/  % directory to store the “itm” files
rfb              /home/rafos/interm/  % directory to store the “rfb” files
trj4             /home/rafos/final/   % directory to store the “trj4” files
                                                             (“simple rfc format”)
rfc              /home/rafos/final/   % directory to store the “rfc” files

[filemask]
session           *.sel              % filemask for the session files
                                                             (not used yet)
argos             *.arg              % filemask for the Argos files
header           *.hdr              % filemask for the header files
sts              *.sts              % filemask for the status files
sfc              *.sfc              % filemask for the surface-navigation files
rfb              *.rfb              % filemask for the “rfb” files
itm              *.itm              % filemask for the “itm” files
rfc              *.rfc              % filemask for the “rfc” files
trj4             *.trj4             % filemask for the “trj4” files

[load]
savesession      0                  % not used yet
cycledelimiter   -                  % filename delimiter for multi-cycle floats
```


The sound-source file

The sound-source file contains the parameters in key/value pairs. The source file consists of the following information for each source:

```
[SQ1]                                % reference
-sourcename SQ1                       % name (should be the same as reference)
-sourcetype WEBB                      % type
-sourceowner IfM Kiel                 % owner
-position 38.383 -19.021              % mooring position of the sound source
                                         (Latitude positive north; longitude positive east)
-depth 1000                           % depth of the sound source (meters)
-begemis 1995 10 21 00 00            % deployment or "begin emission" (year, month, day, hour, min)
-endemis 1998 10 01 00 00            % retrieval or "end emission" (year, month, day, hour, min)
-offset 1995 10 21 0                 % offset (year, month, day, offset in seconds)
                                         This is usually an initial offset.
-drift 0.034                          % drift in seconds per pong-interval or "schedule"
-reftime 01 30                       % pong time (hour, min)
-schedule 24                          % hours between pongs
-signallength 80                     % time in seconds to complete correlation of source
-add_offset NaN                      % any additional constant offset in seconds
-sound_speed 1480                    % sound velocity in meters per second
```

The source clock offset and source clock drift, if positive, will be subtracted from the TOA value; if negative, they will be added to the TOA value. This reflects the fact that a positive source clock offset means that the source clock shows a time in advance of GMT, therefore the TOA will be too long, and should be reduced by the time difference between the source clock and GMT. Similarly, a positive source clock drift, under this convention, indicates that the source clock is becoming faster.

ARGOS input file: .arg

Previously, Service Argos used only 20-bit ID's and you received 32 data bytes per message. If you wanted to check on data-transmission, you needed to include a checksum. In the new Argos messages, there is a CRC, and 28-bit ID's are permitted. In this format, if you are using a 20-bit ID, Service Argos will transmit 32 bytes of data. If you are using a 28-bit ID, you will have only 31 bytes in the data field. In the new Argos messages the CRC is calculated on the 4 bytes of hex address (0hhhhhhh) and 29 bytes of data.

Note in each case below that the first record is the Argos location record, containing program ID, PTT ID (decimal), record-count for this pass, number of variables, satellite ID (alpha), and – if available – quality code, date/time of location, latitude, longitude, altitude, and frequency (estimated transmission frequency). In samples a) and c), the observation times are reported to the thousandth of a second. This happens when "accurate time-coding" is requested from Service Argos. ARTOA-II can cope with either option.

a) Sample data from a 20-bit-ID float, no CRC (note location of 07FF in status message – record 2):

```
02294 24247 5 8 J 3 2002-08-31 13:42:10 12.888 54.606 0.000 401647240
2002-08-31 13:38:25.570 1 8843A83A 506F20AD 5D228334 C8F6118C
```

			D20B4419	2832143F	A09C2165	87040200
2002-08-31	13:41:32.573	1	6607FF02	6001F400	1C8A2D19	58656500
			402C02DA	2600335	1A00095E	A8596665

b) Sample data from a 28-bit-ID float with 20-bit identifier and CRC (note location of FF E0 in status message – record 1):

02683	25316	5	8	D	2	2004-04-11	18:32:09	41.799	310.404	0.000	401650277	
						2004-04-11	18:29:36	1	209DFE	E00C0300	D7200C0E	60496D6E
									2C0015	C230455	1E000F14	1E495F60
						2004-04-11	18:35:25	1	28BB8A	6D71529A	8CD34440	6A704506
									38C61473	867E3481	83063237	7A2AD691

c) Sample data from a 28-bit-ID float with 28-bit identifier and CRC (note location of FFE0 in status message – record 1):

02683	37545	5	8	K								
						2004-08-03	22:30:49.422	1	E3F8FFE0	C9500D7	FFFD5821	63686800
									2C00010C	9501E91B	FFFD56CA	636868
						2004-08-03	22:31:36.408	1	38F0001B	1D7082E1	6D8E9B1	D70836C7
									5C20DB1D	70837FEC	10800000	00

Main float file: rfbnnn.rfb /
Header file: .hdr

The float parameters are given in key/value pairs. Service Argos uses "ptt" to stand for "platform transmitter terminal", or transmitter. ARTOA-II expects the “-floatname” to be five characters with the float number (nnn) in the last three; trouble creating an output file may be traced to this. **Note:** as described for the source file, a clock offset or drift that is “fast” will be expressed by a negative number.

```

rfb164.rfb           % file name
-floatname RF164    % float name
-type 20-bit DLD    % float type (for DLD, must include 20 or 28)
-projectname EUROFLOAT % project name – See below for special use.
-pttdec 12620      % ptt decimal identifier
-ptthex 3f4b2     % ptt hexadecimal identifier
-pttrep 69         % ptt repetition rate in seconds
-launchpos 32.164 -22.022 % launch position (lat, lon)
-launchtime 1995 10 13 12 00 % launch date/time (year, month, day, hour, min)
-recoverpos 30.259 -24.958 % surfacing position (lat, lon)
-recovertime 1996 01 28 02 30 % surfacing date/time (year, month, day, hour, min)
-offset 1995 10 13 12 00 -60.9 % offset at the beginning of the mission (year,
month, day, hour, min, offset in seconds)
-offset 1996 01 28 02 30 -82.6 % offset at the end of the mission (year, month, day,
hour, min, offset in seconds)
% Second offset should be 0.00 for raw data – ARTOA-II will replace
with derived offset.
-cycle 1 32.165 -22.022 1995 10 12 00 00 30.259 -24.958 1996 01 28 00 00
% cycle information = beginning and end of the cycle (first and last listening phase)
% (cycle number lat lon year month day hour min lat lon year month day hour min)
% For example, the float above started its first listening phase the 12th of October 1995 at
% midnight (00:00) and had its last listening phase the 28th January 1996 at midnight.
% The positions at the beginning and the end are, for RAFOS floats, normally the same as
% the launch and surface positions. Note: this does not exactly match the float turn-on time.
% For Marvor floats they are the last/first reported Argos positions at the end/beginning
% of each cycle.
-progdepth 1000 % programmed depth

```

```

-progtemp      12          % programmed temperature
-progsal       0          % programmed salinity (not used yet)
-phasespercycle 300       % number of phases per cycle (for RAFOS cycle and mission
                          are the same thing)
-schedule      24          % listening schedule in hours (time between phases)
-field         CCCPCCCP   % defines schedule of float for decoding (see below)
-signal_length 80          % seconds required for signal correlation
-phasereftime  00 00      % reference time (normally 00 00)
-windowsperphase 3         % windows per listening phase (RAFOS record)
-toaperwindow  2          % times of arrival per window
-toaperphase   6          % times of arrival stored at the end of one phase
                          (product of previous two variables)
-correlationrange 0 3     % range of the correlation heights (0 to 170 for DLD2)
-windowrange   0 2        % range of the window numbering (i.e., 3 windows)
-windowstart   30 60 90   % minutes from the reference time to start of each window
-windowlength  25 25 25   % length of each window (minutes)
-tempequation  1./(tc(1) + tc(2)*log(temp)) - 273.2 % formula for converting counts
                          to temperature data (use "temp" if none)
-tempcoeff     0.001409 0.00027024001 % the coefficients for the above
                          formula (use "1" if none)
-presequationb pc(2)./pres - pc(1) % formula for converting counts to
                          pressure data (use "pres" if none)
-prescoeff     291.89001 1374300 % the coefficients for the pressure (use "1" if none)
-comment       Poseidon % comments (usually ship name)
                          Comment lines are unlimited – start each “-comment”
-edited_by     C Wooding % person who created header
-edited_on     2000 11 14 % date created
-variables     17         % total number of columns
[VARIABLE_LIST]
-line_number   1          % column number for the record-count
-time_of_arrival 3 5 7 9 11 13 % for times of arrival
-correlation_height 2 4 6 8 10 12 % for correlation heights
-pressure      17         % for pressure (engineering units)
-temperature   16         % for temperature (engineering units)
-pres_counts   14         % for pressure (raw counts) – not transmitted for DLD
-temp_counts   15         % for temperature (raw counts) – not transmitted for DLD
[DATA]
 1 20 0 20 0 40 10931 20 18 40 4185 20 10691 4086 4086 2.950 818.80
 2 20 0 20 0 60 5713 40 2825 120 3806 20 9861 4086 4086 5.100 895.10
 3 20 0 20 0 120 3397 100 5642 80 3822 40 12177 4086 4086 5.080 907.30
 4 20 0 20 0 80 5621 20 11026 120 3871 40 18 4086 4086 5.134 909.00
...
897 20 0 20 0 60 9501 40 7057 60 5587 60 12346 4086 4086 5.270 913.90
898 20 0 20 0 60 9507 40 1949 100 5599 40 8090 4086 4086 5.270 911.30
899 20 0 20 0 100 7090 60 950 80 5590 80 12349 4086 4086 5.270 914.60
900 20 0 20 0 40 9520 40 1562 80 5590 40 18 4086 4086 5.253 912.40

```

The data columns are: cycle or line number, window 1 (correlation 1, TOA 1 in deciseconds, correlation 2, TOA 2 in deciseconds), window 2 (as window 1), window 3 (as window 1), pressure counts (null value), temperature counts (null value), pressure, and temperature.

In order for ARTOA-II to work properly, each line of the rfb file must contain only a single set of windows. A float might be set up to store six windows in a day, three just after midnight, say, and three just after noon. ARTOA-II would plot this as six windows and there would be no way

to integrate the noon pongs with the midnight pongs. If this situation occurs, the user must reformat the data so that each line contains only the data from half a day.

Note: The rfb data file must start with line number 1 as the first line, and increase monotonically. ARTOA-II has been known to corrupt an rfb file – it is a good idea to have backup copies in another directory.

Header notes

“-field” describes the programming of the float. “D” indicates pressure and temperature recorded as two fields of 12 bits, with the pressure expressed in centibars and temperature in millidegrees C. “C” represents a field of 15 bits corresponding to the ”-toaperwindow” highest correlation values collected during a listening window. The first 3 bits represent the amplitude on a scale of 0 to 7, and the next 12 bits the delay expressed in sample period. The sample period is .3075 sec for the 260-Hz receivers and .1846 sec for the 780-Hz receivers. ARTOA-II currently uses .3075 as the default (see ‘newparse.m’) but uses .1846 if the program name includes the letters “red”.

Temperature and pressure coefficients and algorithms used to be required to calculate temperature and pressure from the raw counts. The pressure and temperature calculations are now done in the conversion software, before ARTOA-II is run, or, in the case of DLD floats, in the float itself. Therefore, the coefficients can still be included, but are not currently used. If the float didn't record temperature or pressure, use a column-number larger than the limit of the "-variables" value.

2. Output Files

Status messages rfnnn.sts

DLD floats produce a status message every ten messages, which contains information on the state of the instrument. It contains two separate fields. The first one contains data acquired at the time the burn wire was first activated; the second, data for the current time – the time of the Argos transmission. The first field contains message number (FFE0 or 07FF depending on type); day at release time; minutes (1 day = 1440 min), (seconds at release time), pressure in cBars, temperature in millidegrees, vacuum reading (0 to 100), controller battery voltage (dV), PTT battery voltage (dV), SYSTAT variable, STATUS variable, and total number of cycles acquired.

The second field contains the current day, minutes, and seconds; pressure in cBars, temperature in millidegrees, vacuum reading, controller battery voltage, and PTT battery voltage.

The SYSTAT variable contains a set of flags that report fault conditions. If more than one fault occurred, the following would be summed. The values in decimal are:

- 1 Clock module failed to address at least once
- 2 Receiver module failed to address at least once
- 4 PTMOD module failed to address at least once

- 8 Argos-transmitter module failed to address at least once
- 32 Low-battery fault condition
- 64 Surface fault condition
- 128 Too-deep fault condition

Example:

STATUS MESSAGES

Release day,min,sec,P,T,Vac,CBat,PBat,SyStat,Stat,NoCyc

Current day,min,sec,P,T,Vac,CBat,PBat

```

789: 1220: 0 856.8 14.970 88 102 101 0 64 44 730
790: 171:14 1.7 27.130 89 102 102
789: 1220: 0 856.8 14.970 88 102 101 0 64 44 730
790: 534:22 1.6 27.257 89 102 102

```

Surface navigation information rfnnn.sfc

The locations of the buoy on the surface are recorded in the WHOI legacy FLOATER format: The first three columns are program-identifier and the next three are buoy ID (provided by the Principal Investigator, not Service Argos). There are six digits of date (YYMMDD) and four digits of time. Latitude (north positive) and longitude (east positive) follow, and the last column is a quality code (1=low, 5=high).

Surface location example:

```

294227 0301010534 14.194 50.466 1
294227 0301010713 14.171 50.498 1
294227 0301010857 14.150 50.526 3
294227 0301010931 14.145 50.538 3
294227 0301011109 14.114 50.560 1
294227 0301011450 14.059 50.607 3
294227 0301011451 14.058 50.610 5

```

Main float output file: rfcnnn.rfc

This is the commonly-used output format for the tracked data. Most header variables are explained by their labels. The sound source combinations are delimited by truncated Julian dates. (Julian days, called 'Message Date' during the earlier phases of processing, are now called 'Rafos days') .The reference position is usually the launch position. The sound velocities are taken from the sound source file, although a different method of determination may actually have been used. The line with a single asterisk, followed by an "I" is an additional comment line (it is vestigial - the launch date used to be required here). The velocities and header are calculated by 'svdata.m'.

```

** Float: RF022
** variables: InterpFlag LineNum RafosDay Temp Pres Lat Lon U V W
** Units: # # # degC dbar deg deg cm/s cm/s mm/s
** Dummies: NA NA NA -9.99 -999 999 999 999 999 999
** Cycle: 1
** Launch position (Cycle Start position): 9.179 -52.439
** Surface position (Cycle End position): 12.633 -52.287
** Cycle Start time: 1999 2 19 0 0 0 (RAFOS day 11229)
** Launch time: 1999 2 19 12 53 0 (RAFOS day 11229)

```

```

** Cycle End time: 2000      5      14      14      0      0 (RAFOS day 11678.5833)
** First surface Position time: 2000 5 13 14 31 0 (RAFOS day 11678)
** -----
** Tracking method: Least Square
** Interpolation method: Spline
** Interpolation step size: 12 hours
** Interpolation gap size: 10
** Doppler correction: yes
** -----
** Sound source combinations: (rafos day, sound sources, reference position,
sound speed)
** 11229.5 to 11542: 69 77 B1      9.179      -52.439      1.484      1.484      1.484
** 11542.5 to 11573.5: 69 77 185 9.179      -52.439      1.484      1.484      1.484
** 11574 to 11678.5: 69 404      9.179      -52.439      1.484      1.484      1.484
** -----
** Additional Float clock offsets, seconds (beginning, end): 0 0
** -----
* 1 -----
0 1 11229.50 7.622 -999.0      9.184 -52.444 -10.35 19.63 999.00
0 2 11230.00 7.640 551.5      9.260 -52.473 -1.37 19.52 999.00
0 3 11230.50 7.519 542.0      9.326 -52.462 2.54 11.88 0.14
0 4 11231.00 7.510 542.6      9.348 -52.467 -4.17 0.61 -0.19
-1 5 11231.50 7.655 552.4      9.342 -52.482 -1.63 -2.13 -0.09
0 6 11232.00 7.580 550.4      9.338 -52.478 2.23 0.12 0.00

```

The data columns are: quality flag, cycle or line number, "Rafos day" (truncated Julian day with decimal part), temperature, pressure, latitude, longitude, velocities (east, north, vertical). See units listed in the third header line, and "Dummies" or null values in the fourth line.

The quality flag, located in the first column, gives information about interpolation. If the flag is zero (0), then no points in the TOA records used to calculate this track location were interpolated. If the flag is a positive number, it corresponds to the number of interpolated sources used in computing this point.

The east and north velocities are calculated from the latitudes and longitudes, so they are influenced by the interpolation applied to the TOAs. The method is set by default to "spline" in the routine 'horvelo.m'; but it could be changed by altering 'uitc.m'. Method "spline" uses the function 'csape.m' from the Matlab Spline Toolbox (see Matlab documentation for more information). The location data is interpolated to two-hour intervals, and then resampled to the requested data rate. The vertical velocity is determined using a splined pressure record and the analytical derivative of the spline, as described for the north and east velocities. The first and last vertical velocities should be nulls. There will be no vertical velocity if a pressure value is missing, or if a portion of the trajectory can't be computed (bad geometry, *e.g.*), even if pressure and temperature are available. No interpolation is applied to temperature and pressure.

Simplified RFC file: nnn .trj4

TRJ file - extension ".trj4" - is an abbreviated format for the trajectory information. It has a single-line header (float and cycle number: "RF511 - cycle 1", *e.g.*) and saves the track in a 5-column ASCII file. Columns are truncated Julian day, latitude, longitude, pressure and temperature.

```

# RF023 - cycle 1
11229.50      9.217 -52.420 -999.0      5.10

```

11230.00	9.224	-52.499	907.3	5.08
11230.50	9.188	-52.574	909.0	5.13
...				
11677.50	7.985	-47.197	911.3	5.27
11678.00	7.958	-47.201	914.6	5.27
11678.50	-999.000	-999.000	912.4	5.25

VIII. APPENDIX B: Description of related programs

1. Preparatory Program

Toalaunch.m is used before ARTOA-II is run when there is a problem identifying sound sources. It is particularly helpful when a sound source is deployed or recovered during a float mission, since ARTOA-II only identifies sources at the start and end of the mission (including delayed-start missions). Toalaunch uses the sound-source file and a file of float locations (called LSdata.dat) in the format:

[fltno	ID	launch-date	lat	lon	surface-date	lat	lon]
563	25282	200402181324	45.362	-48.500	200404250517	40.909	-50.875
564	25316	200402181404	45.315	-48.467	200403090536	42.845	-49.473

It produces a file of estimates of Times of Arrival (in deciseconds) for launch (Lch) and surface (Sfc) locations of the floats in the file above:

		flt#563	flt#564
sosoA	Lch	6245.55	6248.99
	Sfc	6583.08	6434.00
sosoB	Lch	4418.29	4419.95
	Sfc	4762.34	4599.81
sosoC	Lch	11455.20	11453.62
	Sfc	11663.09	11538.37

2. Plotting Programs

There are four main plotting programs: plotfloattrack.m, plotfloatprops.m, plotdisp...m, and plotvec_and_sosos.m. These programs are not part of the official ARTOA-II package and are run separately.

FUNCTION plotfloattrack(trackfile)
 Function to plot up float track from the rfc*.rfc file, on top of bathymetry.
 New 2-minute-interval or 1-minute-interval bathymetry must be prepared for each ocean-area - download from GEBCO (<http://www.ngdc.noaa.gov/mgg/gebco/gebco.html>) or get the CD-ROM from <http://www.ngdc.noaa.gov/mgg/fliers/01mgg04.html>
 05 February 2000, H.H.Furey.

USAGE: plotfloattrack2('rfc346.rfc '
 CALLS: merc.m, lab_geog.m, XXXbathmap.m ... needs data file XXXbath.mat in path.
 INPUT: trackfile - name of track file, *i.e.*, rfcnnn.rfc, IN SINGLE QUOTES.
 NOTE: MAY want to edit the following constants defined in program;
 "titletext" - plot title,
 "tickint" - x- and y-axis labelling increment.
 "labelrot" - rotation angle for date labels along track.

FUNCTION plotfloatprops(trackfile)

Function to plot up float properties: pressure, temperature, u-velocity, v-velocity, and u-v stick plot, using the data from the rfcnnn.rfc file. 04 Feb. 2000, H.H.Furey.

24 November 2000 CMW revises to get mission from header.
and read Artoa-II output (rfcnnn.rfc)

USAGE: plotfloatprops('rfc384.rfc ')

CALLS: pullfloatprops.m, high_calendar.m, gregor.m, scaled_stick.m, nanmin.m, nanmax.m
(must be in path else edit line number 51).

INPUT: trackfile - name of track file, *i.e.*, rfcnnn.rfc, IN SINGLE QUOTES.

NOTE: MAY want to edit the following constant defined in program; "div" - axis marker
Width.

FUNCTION plotdispXXX;

Function to plot all float displacement vectors on bathymetry with sound sources (optional).

20 April 2000, H H. Furey.

11 July 2001 M Pacheco changed figure window to orient landscape

USAGE: plotdispXXX, where XXX denotes the experiment

CALLS: merc.m, lab_geog.m, XXXbathmap.m ... needs data files XXXbath.mat and
XXX_LSdata.dat in path

NOTE: Will/may want to edit the following constants defined in program; name of data file
where experiment's launch and surface data stored, currently XXX_LSdata.dat.

"ax" - axis where vectors plotted.

"tickinc" - axis tick increment.

"sosofile" = name of source.dat file << This read source.dat - OOD

TO RUN:

CREATE XXX_LSdata.dat, which has the following columns:

[fltno	ID	launch-date	lat	lon	surface-date	lat	lon]
563	25282	200402181324	45.362	-48.500	200404250517	40.909	-50.875
564	25316	200402181404	45.315	-48.467	200403090536	42.845	-49.473

FUNCTION plotvec_and_sosos(fltnum,lims); plots with user-defined limits,

plotvec_and_sosos(fltnum); plots extent of bathy data

Function to plot a single float displacement vector on bathymetry, with sound sources.

20 April 2000, H H. Furey.

USAGE: plotvec_and_sosos(384) - plots vec for float #384

also requires special launch/sfc file - as above

CALLS: merc.m, lab_geog.m, XXXbathmap.m ...

needs data files XXXbath.mat, XXX_LSdata.dat, and source.dat in path

INPUT: fltnum - float number you wish to plot up.

lims - [west east south north], user defined limits, if this variable not entered, program

defaults to plotting all data in window.

NOTE: May want to edit the following constants defined in program;

Name of data file where experiment's launch and surface data stored,
currently XXX_LSdata.dat

Name of source file for experiment.

“tickinc” - axis tick increment.

3. Other Programs

Ross2flt

Converts the output of ARTOA-II to the legacy Floater format. This is a Fortran program. The only input required is the full name of the input file. Any extensions after .rfc will be added to the extension of the resulting .pri file. The information in the header is lost, as is the quality coding, but the dates are Gregorian.

A number of plotting, smoothing, *etc.*, routines exist for Floater format, and it has been used for the ASCII data for the WOCE Subsurface Float Data Archive. These programs can be accessed at <http://wfdac.who.edu>.

REPORT DOCUMENTATION PAGE	1. REPORT NO. WHOI-2005-02	2.	3. Recipient's Accession No.
4. Title and Subtitle RAFOS Float Processing at the Woods Hole Oceanographic Institution		5. Report Date January 2005	
7. Author(s) Christine M. Wooding, Heather H. Furey, and Marguerite A. Pacheco		6.	
9. Performing Organization Name and Address Woods Hole Oceanographic Institution Woods Hole, Massachusetts 02543		8. Performing Organization Rept. No. WHOI-2005-02	
12. Sponsoring Organization Name and Address Woods Hole Oceanographic Institution		10. Project/Task/Work Unit No.	
15. Supplementary Notes This report should be cited as: Woods Hole Oceanog. Inst. Tech. Rept., WHOI-2005-02.		11. Contract(C) or Grant(G) No. (C) (G)	
16. Abstract (Limit: 200 words) This report and its accompanying webpage (http://www.whoi.edu/science/PO/rafos/index.htm) describe the processing steps for RAFOS floats, from subscribing to Service Argos to plotting the final data for a data report. The MATLAB-based tracking software ARTOA-II is described in detail. ARTOA-II allows the user to convert raw hexadecimal data to decimal format, calculate float clock drifts, edit raw data, and use the time-of-arrival data to calculate float trajectories. The intention is that this report will provide a handy reference and it will be kept from becoming out-of-date by updates to the relevant webpages.		13. Type of Report & Period Covered Technical Report	
17. Document Analysis a. Descriptors float processing software b. Identifiers/Open-Ended Terms c. COSATI Field/Group		14.	
18. Availability Statement Approved for public release; distribution unlimited.	19. Security Class (This Report) UNCLASSIFIED	21. No. of Pages 43	
	20. Security Class (This Page)	22. Price	

DOCUMENT LIBRARY

Distribution List for Technical Report Exchange – July 1998

University of California, San Diego
SIO Library 0175C
9500 Gilman Drive
La Jolla, CA 92093-0175

Hancock Library of Biology & Oceanography
Alan Hancock Laboratory
University of Southern California
University Park
Los Angeles, CA 90089-0371

Gifts & Exchanges
Library
Bedford Institute of Oceanography
P.O. Box 1006
Dartmouth, NS, B2Y 4A2, CANADA

NOAA/EDIS Miami Library Center
4301 Rickenbacker Causeway
Miami, FL 33149

Research Library
U.S. Army Corps of Engineers
Waterways Experiment Station
3909 Halls Ferry Road
Vicksburg, MS 39180-6199

Marine Resources Information Center
Building E38-320
MIT
Cambridge, MA 02139

Library
Lamont-Doherty Geological Observatory
Columbia University
Palisades, NY 10964

Library
Serials Department
Oregon State University
Corvallis, OR 97331

Pell Marine Science Library
University of Rhode Island
Narragansett Bay Campus
Narragansett, RI 02882

Working Collection
Texas A&M University
Dept. of Oceanography
College Station, TX 77843

Fisheries-Oceanography Library
151 Oceanography Teaching Bldg.
University of Washington
Seattle, WA 98195

Library
R.S.M.A.S.
University of Miami
4600 Rickenbacker Causeway
Miami, FL 33149

Maury Oceanographic Library
Naval Oceanographic Office
Building 1003 South
1002 Balch Blvd.
Stennis Space Center, MS, 39522-5001

Library
Institute of Ocean Sciences
P.O. Box 6000
Sidney, B.C. V8L 4B2
CANADA

National Oceanographic Library
Southampton Oceanography Centre
European Way
Southampton SO14 3ZH
UK

The Librarian
CSIRO Marine Laboratories
G.P.O. Box 1538
Hobart, Tasmania
AUSTRALIA 7001

Library
Proudman Oceanographic Laboratory
Bidston Observatory
Birkenhead
Merseyside L43 7 RA
UNITED KINGDOM

IFREMER
Bibliothèque La Pérouse
Centre de Documentation sur la Mer
15 rue Dumont d'Urville
Technopôle Brest-Iroise
BP 70 — 29280 Plouzané — FRANCE