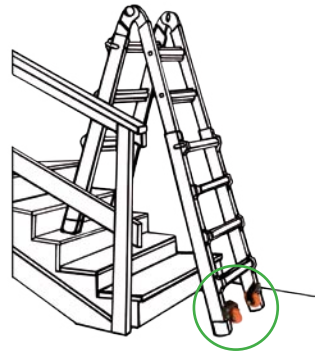
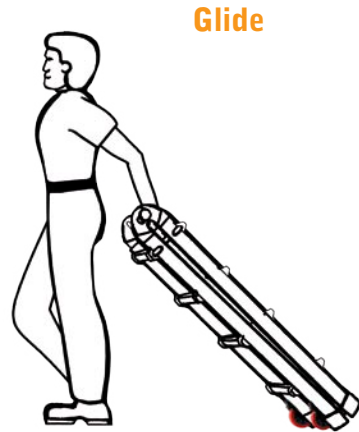


# Little Giant® Ladder Systems

## TIP & GLIDE™ WHEEL INSTRUCTIONS

Carefully read and follow all operational and safety instructions



In all applications, except for transporting the ladder, the wheels must not have contact with the ground.

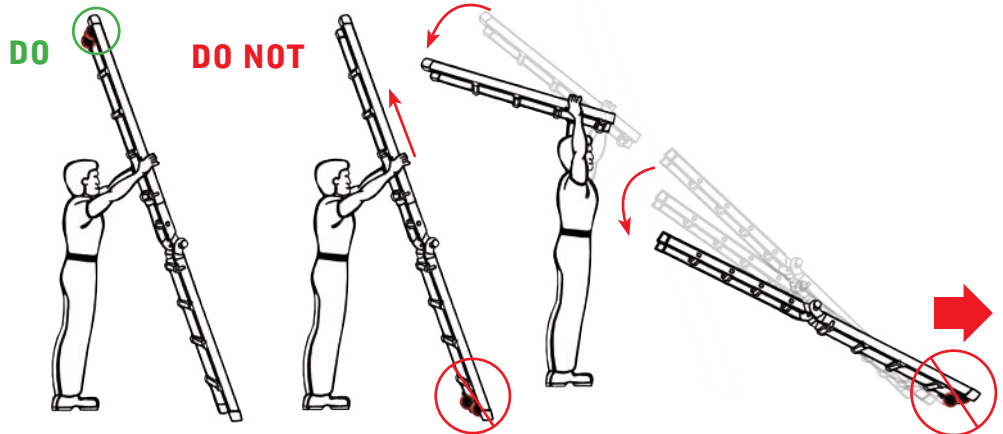
In stair access position, keep wheels on the lower side of stairs (as shown).

### WHEEL WARNING

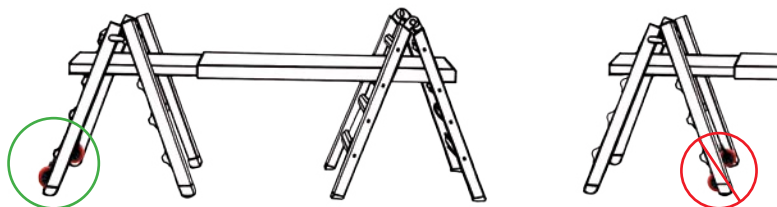
IN EXTENSION LADDER POSITION, WHEELS MUST BE AT THE TOP OF THE LADDER.

NEVER ALLOW WHEELS TO CONTACT ANY SURFACE WHILE LADDER IS BEING USED OR ADJUSTED. LADDER MAY ROLL OUT AND CAUSE INJURY.

WHEELS MUST ONLY BE USED TO ASSIST IN TRANSPORTING LADDER.



Turn ladder outer without wheels 180 degrees and insert lock assemblies of that base into the adjacent holes of the opposite base. **DO NOT** have the wheels touch the ground.



**DO NOT** have the wheels on the inside of the trestle.

Not actual wheel size. Enlarged for demonstration.

**DO NOT USE THE WHEELS AS A STEP.**



Figure 1

### Tools Included:

- Wheel Assembly (2 each)
- Nut, 10-24 Nylock (4 each)
- Screw, 10-24 x 1 1/4 (4 each)
- Wrench, 3/8" Flat (1 each)
- Key, 1/8" Hex Allen (1 each)
- Drill Bit, #10 (1 each)
- Label, Wheel Warning (2 each)
- User Instructions / Warnings (1 each)

### Tools Needed:

- Power Drill
- Safety Glasses

### ONLY FOR

**TYPE IA** Models 17, 22, 26 - (2 7/8")

**TYPE IAA** Models 17, 22 - (2 7/8")

**TYPE I** Models 17 & 22 - (1 7/8")

2 7/8" Tall



1 7/8" Tall



# DANGER

**ENSURE THAT THE PROPER FOOT SIZE AND BRACKET SPACING HAS BEEN DETERMINED. FAILURE TO READ AND FOLLOW ALL INSTRUCTIONS MAY RESULT IN INJURIES OR DEATH**

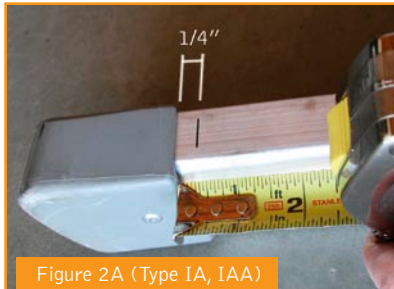


Figure 2A (Type IA, IAA)

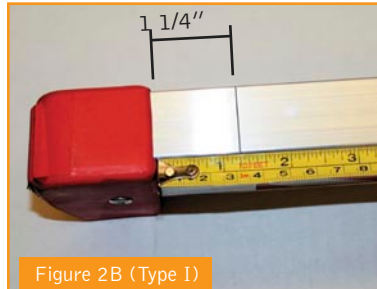


Figure 2B (Type I)

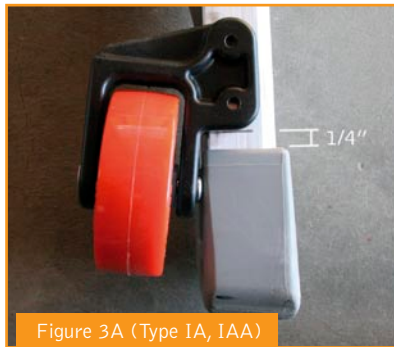


Figure 3A (Type IA, IAA)

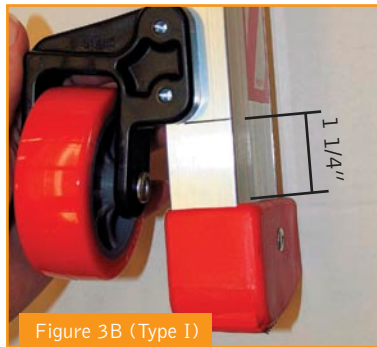


Figure 3B (Type I)



Figure 4



Figure 6



Figure 5

1. Unlock ladder and remove one outer ladder assembly completely off of the inner ladder assembly.
2. Take the removed outer ladder assembly and lay it on flat ground, rung side up. (Figure 1).
3. For Types IA and IAA measure 1/4" (see Figure 2A); For Type I measure 1 1/4" (see Figure 2B) from the top of the rubber feet on the rung side of the rail and lightly mark your ladder on both side rails.
4. Then slide the bottom of the wheel brackets in line with your marks. Make sure the bottom of the wheel brackets are 1/4" (1 1/4" for Type I see Figure 3B) from the top of the rubber feet (Figure 3A). Make sure the bracket slots are flush up against the edge of the side rail.
5. Use the #10 drill bit to drill two holes into each of the side rails using the bracket screw holes as a guide (Figure 4).
6. With the holes drilled, slide in the #10-24 x 1 1/4" screws. Put one 10-24 Nylock nut on the back of each screw. Use the wrench to hold the nuts and use the hex allen key to tighten the top of the screws (Figure 5).
7. Place the wheel warning labels onto each side rail. Line them up just above each foot with wheels (Figure 6).
8. Carefully read all operational and safety instructions before using the wheels.